

Data Path : Z:\pestpcbsrv\HPCHEM1\ECD_R\Data\PR031419\
 Data File : PR036159.D
 Signal(s) : Signal #1: ECD1A.ch Signal #2: ECD2B.ch
 Acq On : 14 Mar 2019 09:52
 Operator : SM\SJ
 Sample : AR1660CCC500
 Misc :
 ALS Vial : 3 Sample Multiplier: 1

Instrument :
 ECD_R
 ClientSampled :
 AR1660CCC500

Integration File signal 1: autoint1.e
 Integration File signal 2: autoint2.e
 Quant Time: Mar 14 10:24:34 2019
 Quant Method : Z:\pestpcbsrv\HPCHEM1\ECD_R\Method\PR030119.M
 Quant Title : GC EXTRACTABLES
 QLast Update : Thu Mar 07 10:54:32 2019
 Response via : Initial Calibration
 Integrator: ChemStation

Volume Inj. : 2 µl
 Signal #1 Phase : ZB-MR1 Signal #2 Phase: ZB-MR2
 Signal #1 Info : 30Mx0.32mmx 0.50µ Signal #2 Info : 30M x 0.32mm x 0.25µm

Compound	RT#1	RT#2	Resp#1	Resp#2	ng/ml	ng/ml
System Monitoring Compounds						
1) SA Tetrachlo...	4.422	3.478	76912058	235.8E6	48.395	44.896
2) SA Decachlor...	10.093	8.361	77968767	278.7E6	48.754	42.465
Target Compounds						
3) L1 AR-1016-1	5.588	4.536	28443648	101.2E6	531.619	543.881
4) L1 AR-1016-2	5.588	4.552	28443648	156.3E6	325.472	539.018 #
5) L1 AR-1016-3	5.671	4.724	27626235	99833557	522.184	652.229
6) L1 AR-1016-4	5.769	4.766	23265054	70176963	540.842	583.435
7) L1 AR-1016-5	6.061	4.974	22642721	93053380	504.822	573.894
8) L2 AR-1221-1	4.628	3.686	2418643	11371506	103.410	156.363 #
9) L2 AR-1221-2	4.718	3.771	3986065	14188204	235.409	277.124
10) L2 AR-1221-3	4.794	3.844	14299569	51119330	257.132	286.788
11) L3 AR-1232-1	4.794	3.844	14299569	51119330	458.626	522.780
12) L3 AR-1232-2	5.321	4.552	21500387	156.3E6	1280.458	1332.493
13) L3 AR-1232-3	5.588	4.724	28443648	99833557	809.750	1684.207 #
14) L3 AR-1232-4	5.769	4.806	23265054	82754594	1359.627	1614.935
15) L3 AR-1232-5	5.857	4.974	20814053	93053380	1489.248	1592.896
16) L4 AR-1242-1	5.588	4.536	28443648	101.2E6	649.160	680.179
17) L4 AR-1242-2	5.588	4.552	28443648	156.3E6	415.260	668.337 #
18) L4 AR-1242-3	5.671	4.724	27626235	99833557	661.011	830.953 #
19) L4 AR-1242-4	5.769	4.806	23265054	82754594	677.204	723.366
20) L4 AR-1242-5	6.501	5.318	4382334	69636894	106.627	394.576 #
21) L5 AR-1248-1	5.588	4.536	28443648	101.2E6	811.138	840.581
22) L5 AR-1248-2	5.857	4.766	20814053	70176963	396.325	426.117
23) L5 AR-1248-3	6.061	4.806	22642721	82754594	381.819	489.003 #
24) L5 AR-1248-4	6.436	4.974	29145557	93053380	421.047	397.994
25) L5 AR-1248-5	6.501	5.341	4382334	45652513	66.137	192.956 #
26) L6 AR-1254-1	6.436	5.318	29145557	69636894	464.466	234.776 #
27) L6 AR-1254-2	6.651	5.463	18365869	75170965	201.701	288.387 #
28) L6 AR-1254-3	7.020	5.872	15196593	127.4E6	145.948	287.221 #
29) L6 AR-1254-4	7.302	6.084	12239278	25662669	156.284	81.886 #
30) L6 AR-1254-5	7.719	6.494	72763800	239.3E6	750.092	571.690
31) L7 AR-1260-1	7.179	5.986	46580109	173.8E6	479.696	477.300
32) L7 AR-1260-2	7.435	6.172	55118509	258.4E6	478.935	494.630
33) L7 AR-1260-3	7.791	6.323	42588680	210.4E6	578.634	480.632
34) L7 AR-1260-4	8.017	6.787	49267954	174.5E6	522.190	563.633
35) L7 AR-1260-5	8.334	7.029	99608615	500.8E6	590.693	554.482
36) L8 AR-1262-1	7.791	6.584	42588680	117.5E6	397.426	583.605 #
37) L8 AR-1262-2	8.334	7.029	99608615	500.8E6	500.691	480.611
38) L8 AR-1262-3	8.656	7.307	62736332	112.9E6	462.830	275.831 #
39) L8 AR-1262-4	8.710	7.371	39888285	331.7E6	385.409	458.727
40) L8 AR-1262-5	9.368	7.863	25973791	115.0E6	365.900	350.152
41) L9 AR-1268-1	8.656	7.307	62736332	112.9E6	260.450	89.306 #

Data Path : Z:\pestpcbsrv\HPCHEM1\ECD_R\Data\PR031419\
 Data File : PR036159.D
 Signal(s) : Signal #1: ECD1A.ch Signal #2: ECD2B.ch
 Acq On : 14 Mar 2019 09:52
 Operator : SM\SJ
 Sample : AR1660CCC500
 Misc :
 ALS Vial : 3 Sample Multiplier: 1

Instrument :
 ECD_R
 ClientSampleId :
 AR1660CCC500

Integration File signal 1: autoint1.e
 Integration File signal 2: autoint2.e
 Quant Time: Mar 14 10:24:34 2019
 Quant Method : Z:\pestpcbsrv\HPCHEM1\ECD_R\Method\PR030119.M
 Quant Title : GC EXTRACTABLES
 QLast Update : Thu Mar 07 10:54:32 2019
 Response via : Initial Calibration
 Integrator: ChemStation

Volume Inj. : 2 µl
 Signal #1 Phase : ZB-MR1 Signal #2 Phase: ZB-MR2
 Signal #1 Info : 30Mx0.32mmx 0.50µ Signal #2 Info : 30M x 0.32mm x 0.25µm

	Compound	RT#1	RT#2	Resp#1	Resp#2	ng/ml	ng/ml
42)	L9 AR-1268-2	8.710	7.371	39888285	331.7E6	182.652	292.515 #
43)	L9 AR-1268-3	0.000	7.572	0	11354235	N.D.	11.575 #
44)	L9 AR-1268-4	9.368	7.863	25973791	115.0E6	342.152	321.607
45)	L9 AR-1268-5	9.768	8.133	6713940	26786124	12.204	10.066

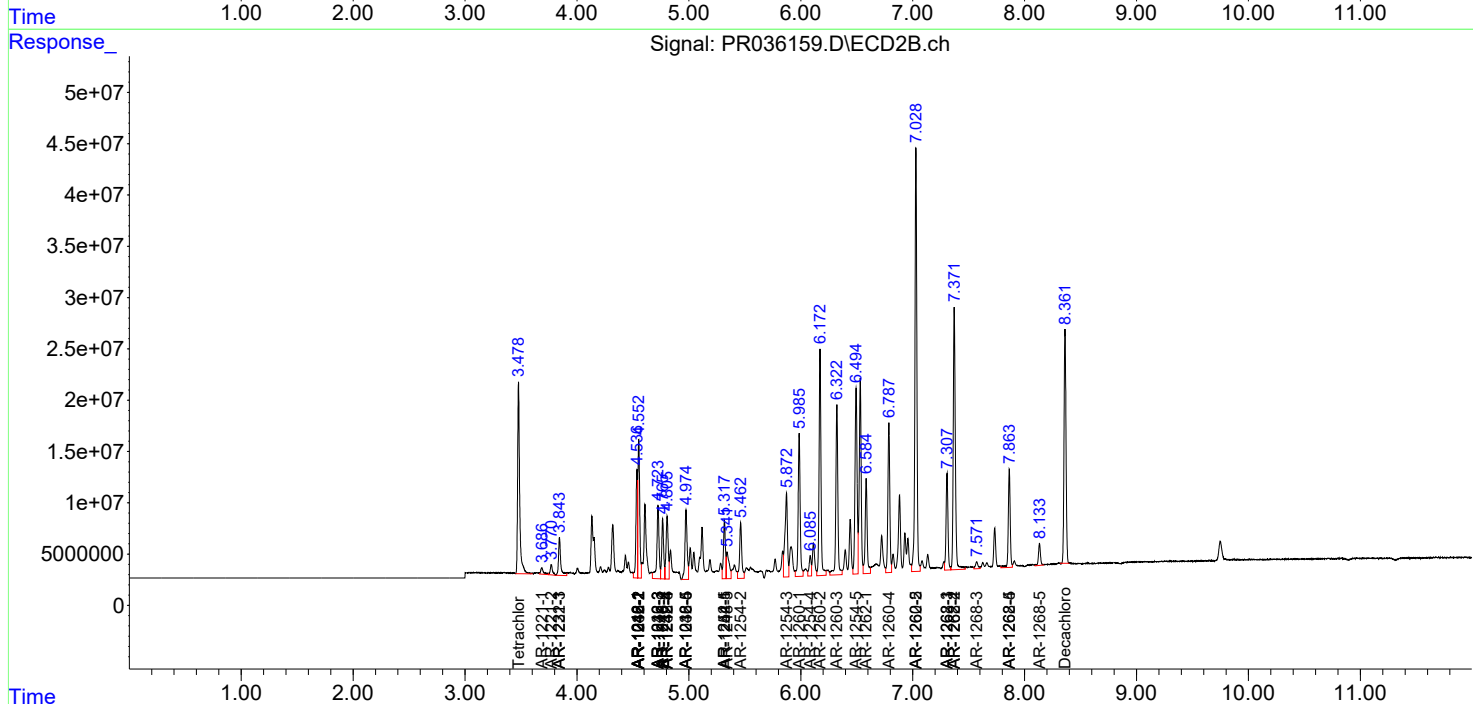
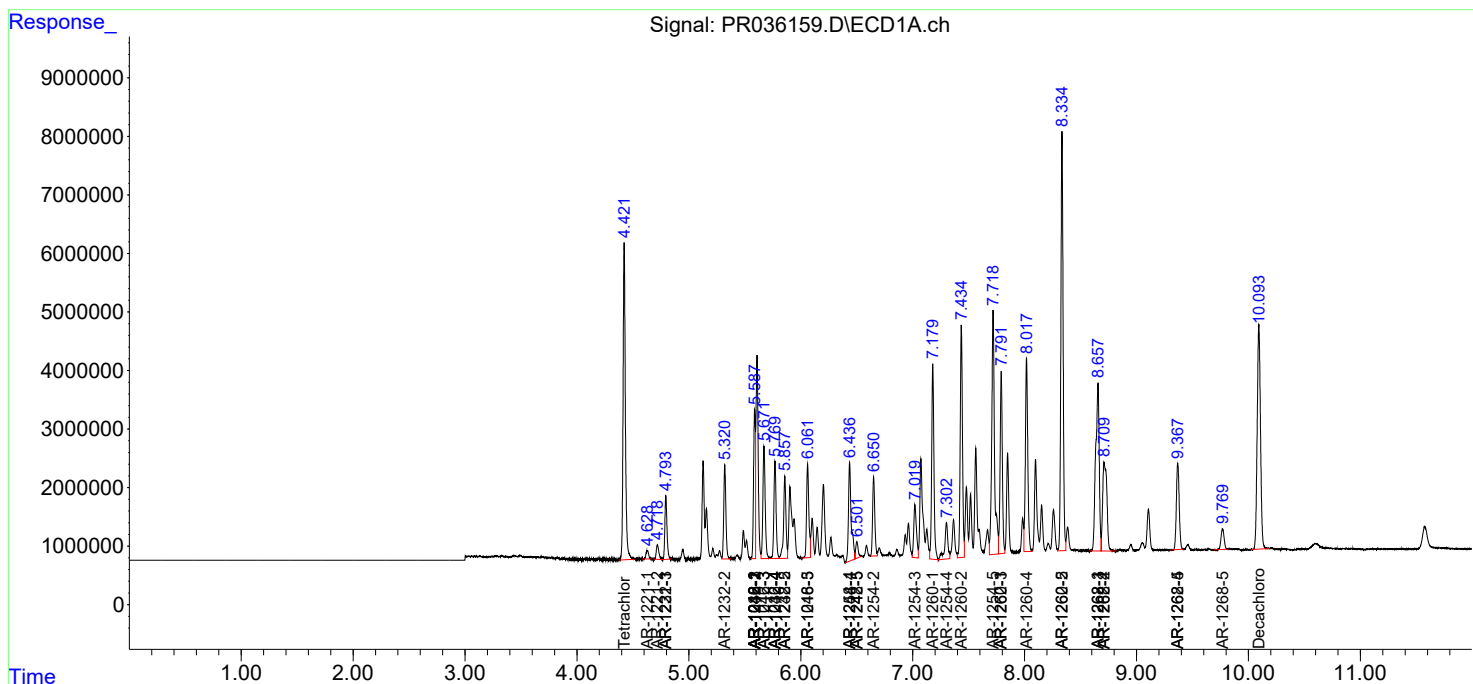
(f)=RT Delta > 1/2 Window (#)=Amounts differ by > 25% (m)=manual int.

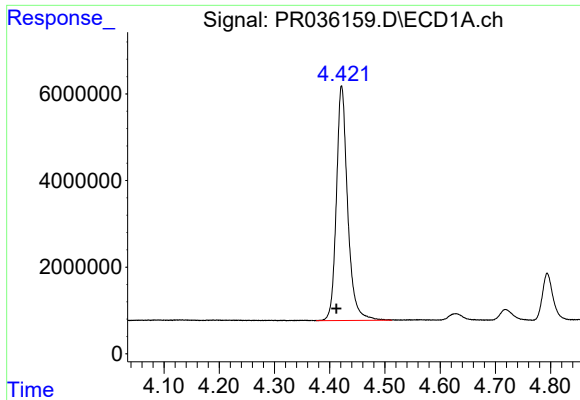
Data Path : Z:\pestpcbsrv\HPCHEM1\ECD_R\Data\PR031419\
 Data File : PR036159.D
 Signal(s) : Signal #1: ECD1A.ch Signal #2: ECD2B.ch
 Acq On : 14 Mar 2019 09:52
 Operator : SM\SJ
 Sample : AR1660CCC500
 Misc :
 ALS Vial : 3 Sample Multiplier: 1

Instrument :
 ECD_R
Client Sampled :
 AR1660CCC500

Integration File signal 1: autoint1.e
 Integration File signal 2: autoint2.e
 Quant Time: Mar 14 10:24:34 2019
 Quant Method : Z:\pestpcbsrv\HPCHEM1\ECD_R\Method\PR030119.M
 Quant Title : GC EXTRACTABLES
 QLast Update : Thu Mar 07 10:54:32 2019
 Response via : Initial Calibration
 Integrator: ChemStation

Volume Inj. : 2 µl
 Signal #1 Phase : ZB-MR1 Signal #2 Phase: ZB-MR2
 Signal #1 Info : 30Mx0.32mmx 0.50µ Signal #2 Info : 30M x 0.32mm x 0.25µm

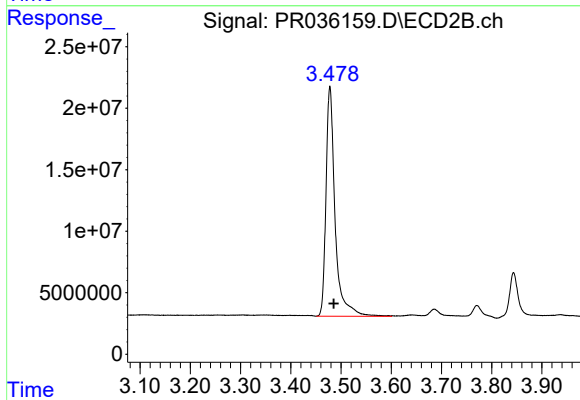




#1 Tetrachloro-m-xylene

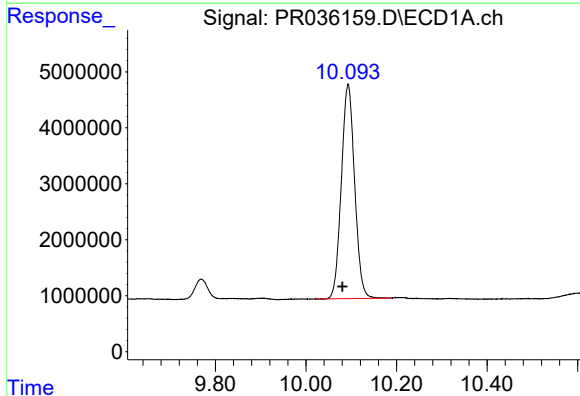
R.T.: 4.422 min
Delta R.T.: 0.010 min
Response: 76912058
Conc: 48.39 ng/ml

Instrument :
ECD_R
ClientSampleId :
AR1660CCC500



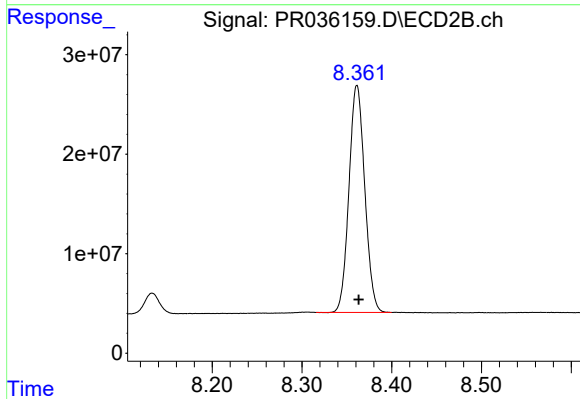
#1 Tetrachloro-m-xylene

R.T.: 3.478 min
Delta R.T.: -0.008 min
Response: 235788376
Conc: 44.90 ng/ml



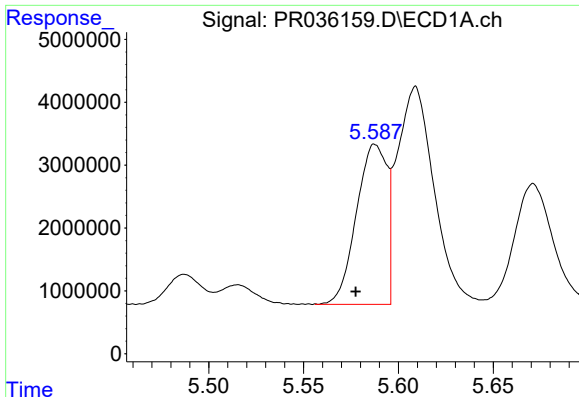
#2 Decachlorobiphenyl

R.T.: 10.093 min
Delta R.T.: 0.013 min
Response: 77968767
Conc: 48.75 ng/ml



#2 Decachlorobiphenyl

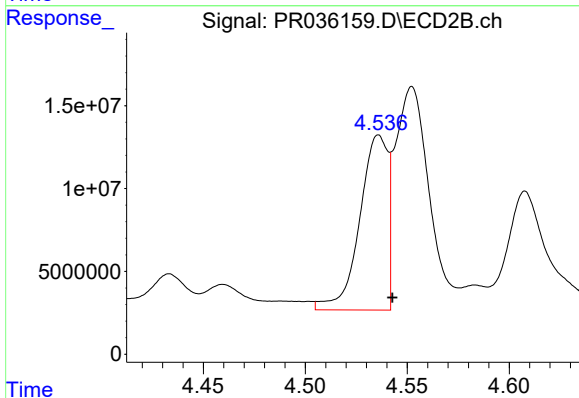
R.T.: 8.361 min
Delta R.T.: -0.002 min
Response: 278729724
Conc: 42.46 ng/ml



#3 AR-1016-1

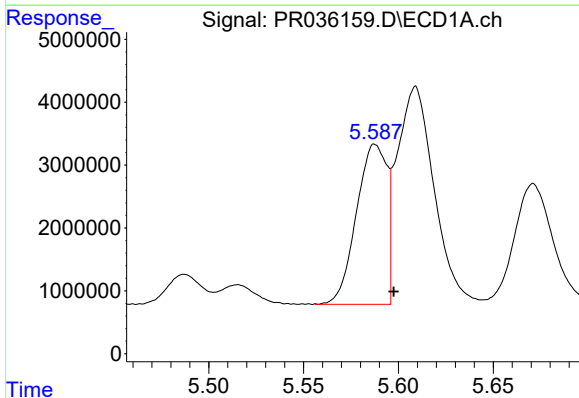
R.T.: 5.588 min
 Delta R.T.: 0.010 min
 Response: 28443648
 Conc: 531.62 ng/ml

Instrument :
 ECD_R
 ClientSampleId :
 AR1660CCC500



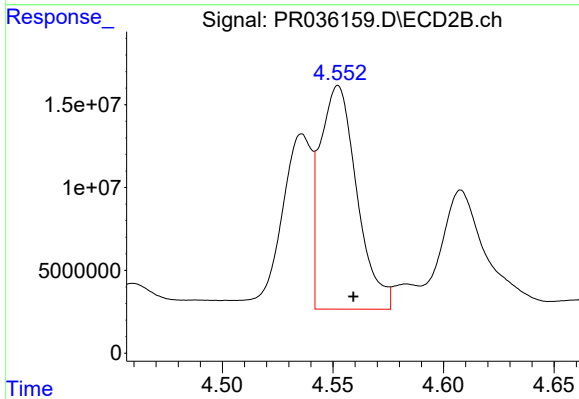
#3 AR-1016-1

R.T.: 4.536 min
 Delta R.T.: -0.007 min
 Response: 101197834
 Conc: 543.88 ng/ml



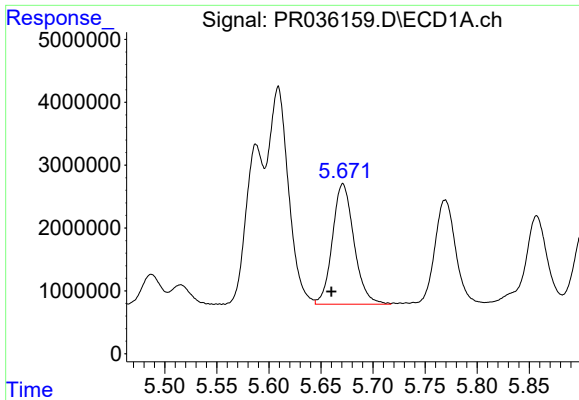
#4 AR-1016-2

R.T.: 5.588 min
 Delta R.T.: -0.010 min
 Response: 28443648
 Conc: 325.47 ng/ml



#4 AR-1016-2

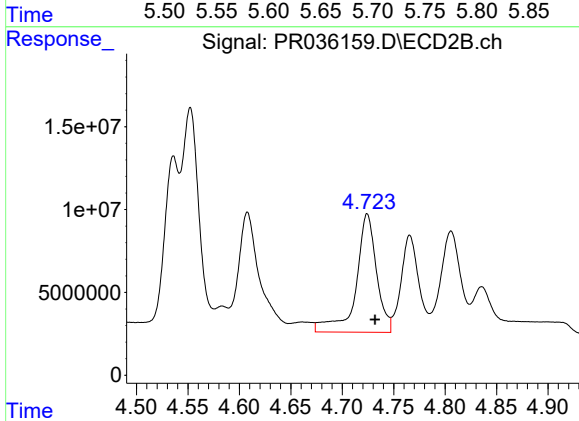
R.T.: 4.552 min
 Delta R.T.: -0.007 min
 Response: 156293253
 Conc: 539.02 ng/ml



#5 AR-1016-3

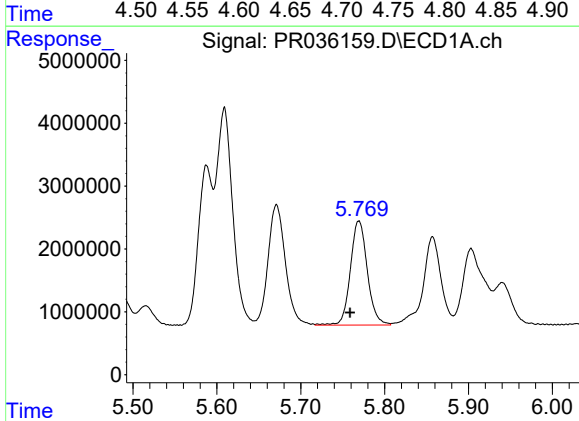
R.T.: 5.671 min
 Delta R.T.: 0.011 min
 Response: 27626235
 Conc: 522.18 ng/ml

Instrument :
 ECD_R
 ClientSampleId :
 AR1660CCC500



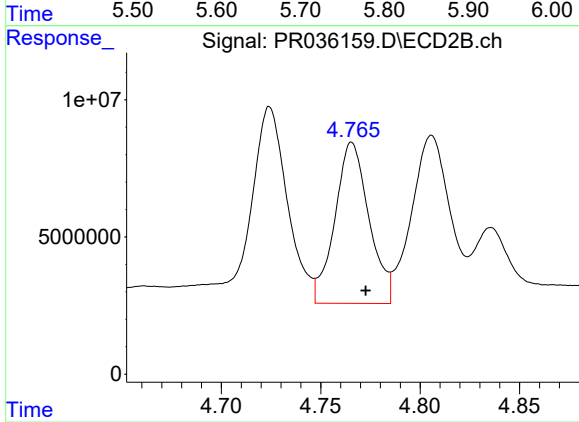
#5 AR-1016-3

R.T.: 4.724 min
 Delta R.T.: -0.008 min
 Response: 99833557
 Conc: 652.23 ng/ml



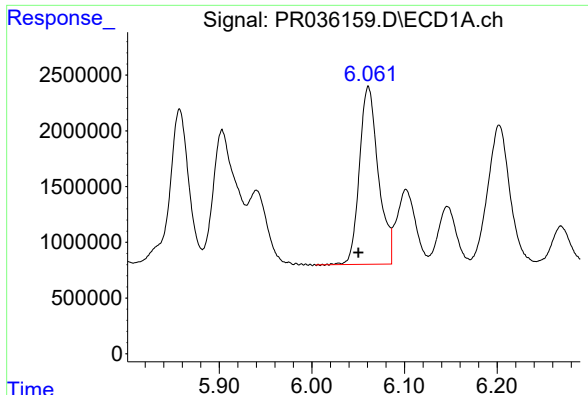
#6 AR-1016-4

R.T.: 5.769 min
 Delta R.T.: 0.010 min
 Response: 23265054
 Conc: 540.84 ng/ml



#6 AR-1016-4

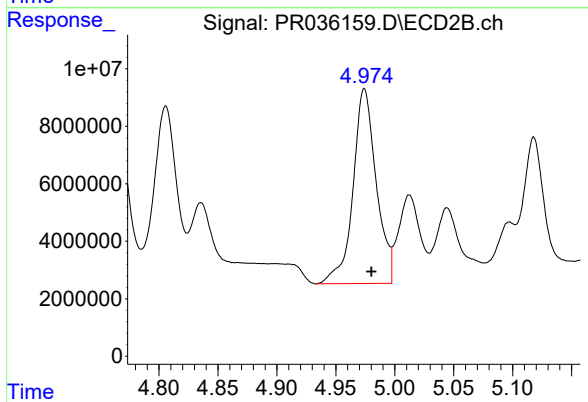
R.T.: 4.766 min
 Delta R.T.: -0.007 min
 Response: 70176963
 Conc: 583.43 ng/ml



#7 AR-1016-5

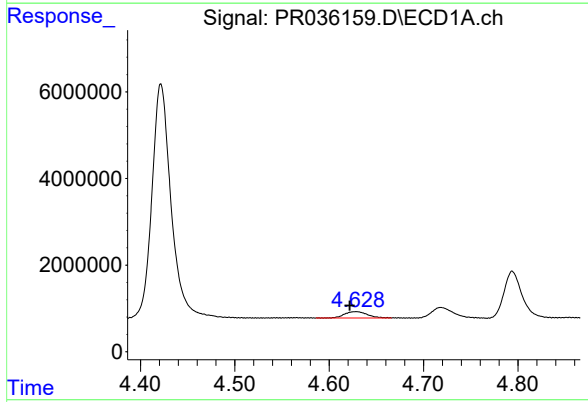
R.T.: 6.061 min
 Delta R.T.: 0.011 min
 Response: 22642721
 Conc: 504.82 ng/ml

Instrument :
 ECD_R
 ClientSampleId :
 AR1660CCC500



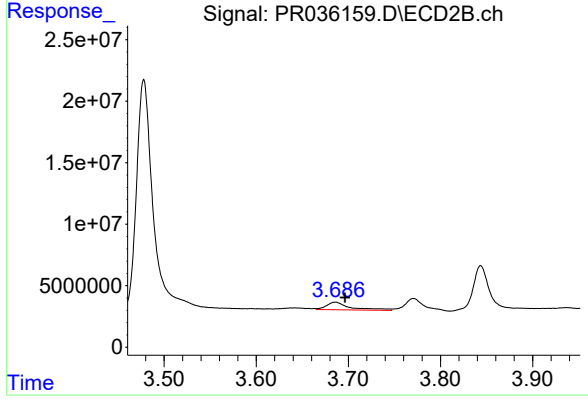
#7 AR-1016-5

R.T.: 4.974 min
 Delta R.T.: -0.006 min
 Response: 93053380
 Conc: 573.89 ng/ml



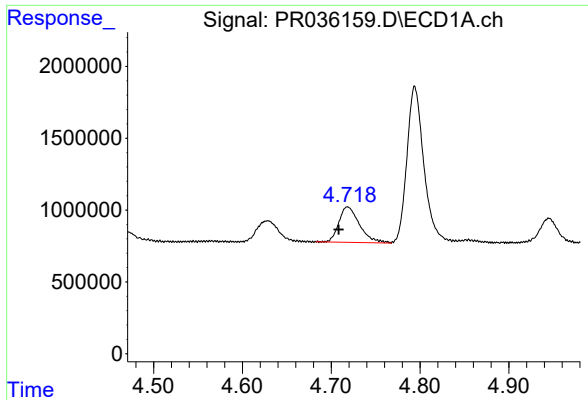
#8 AR-1221-1

R.T.: 4.628 min
 Delta R.T.: 0.006 min
 Response: 2418643
 Conc: 103.41 ng/ml



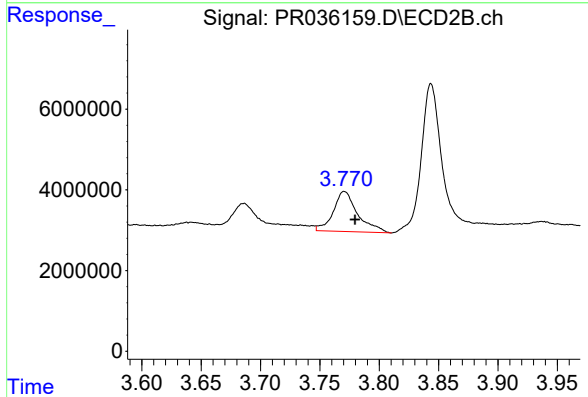
#8 AR-1221-1

R.T.: 3.686 min
 Delta R.T.: -0.010 min
 Response: 11371506
 Conc: 156.36 ng/ml

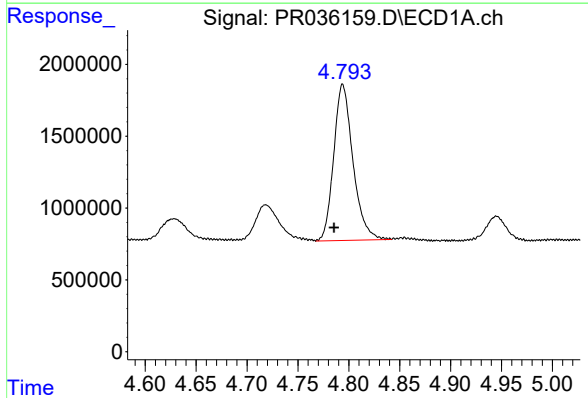


#9 AR-1221-2
 R.T.: 4.718 min
 Delta R.T.: 0.010 min
 Response: 3986065
 Conc: 235.41 ng/ml

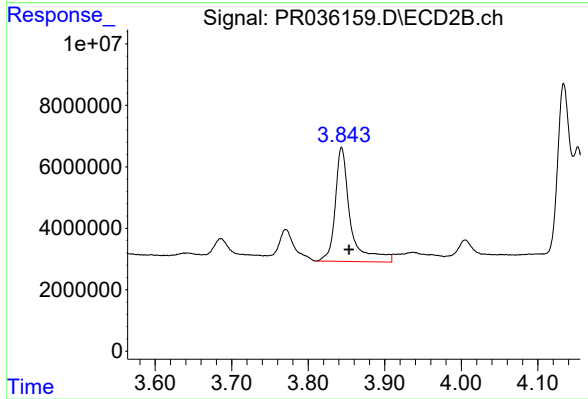
Instrument :
 ECD_R
 ClientSampleId :
 AR1660CCC500



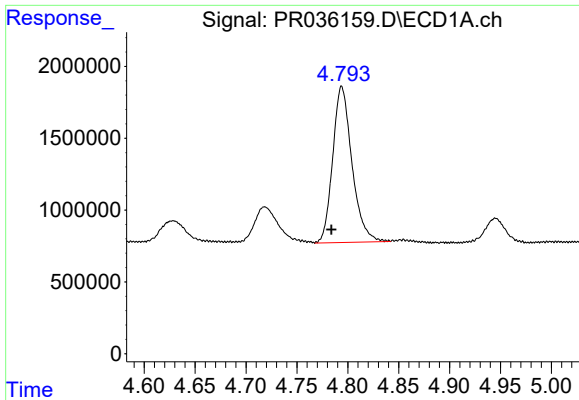
#9 AR-1221-2
 R.T.: 3.771 min
 Delta R.T.: -0.009 min
 Response: 14188204
 Conc: 277.12 ng/ml



#10 AR-1221-3
 R.T.: 4.794 min
 Delta R.T.: 0.008 min
 Response: 14299569
 Conc: 257.13 ng/ml

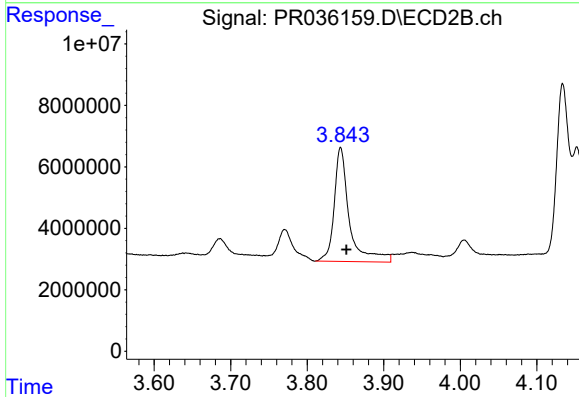


#10 AR-1221-3
 R.T.: 3.844 min
 Delta R.T.: -0.010 min
 Response: 51119330
 Conc: 286.79 ng/ml

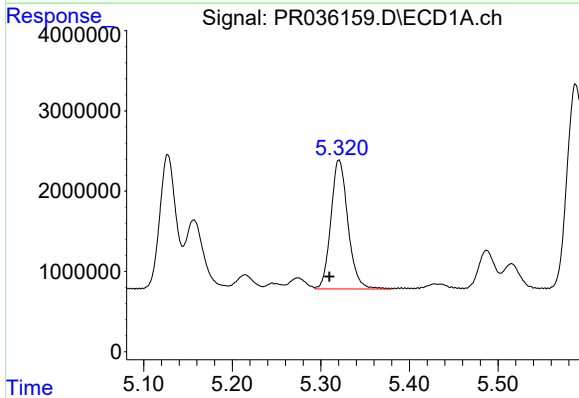


#11 AR-1232-1
 R.T.: 4.794 min
 Delta R.T.: 0.010 min
 Response: 14299569
 Conc: 458.63 ng/ml

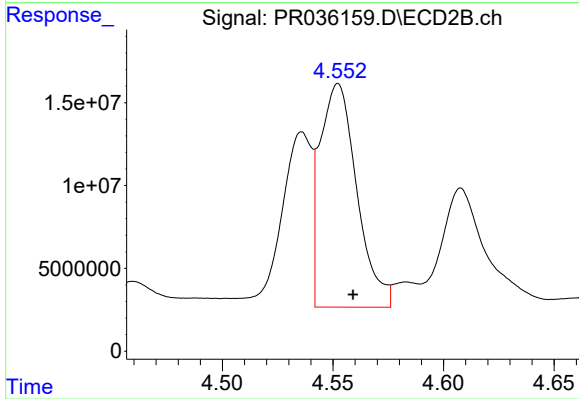
Instrument :
 ECD_R
ClientSampleId :
 AR1660CCC500



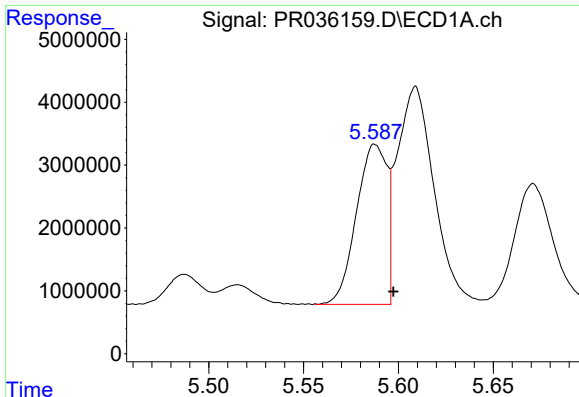
#11 AR-1232-1
 R.T.: 3.844 min
 Delta R.T.: -0.008 min
 Response: 51119330
 Conc: 522.78 ng/ml



#12 AR-1232-2
 R.T.: 5.321 min
 Delta R.T.: 0.011 min
 Response: 21500387
 Conc: 1280.46 ng/ml



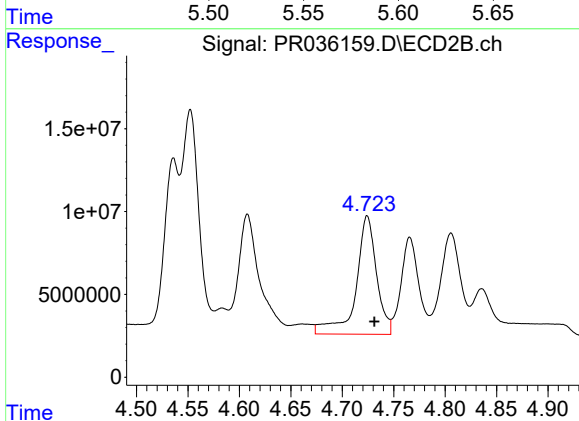
#12 AR-1232-2
 R.T.: 4.552 min
 Delta R.T.: -0.007 min
 Response: 156293253
 Conc: 1332.49 ng/ml



#13 AR-1232-3

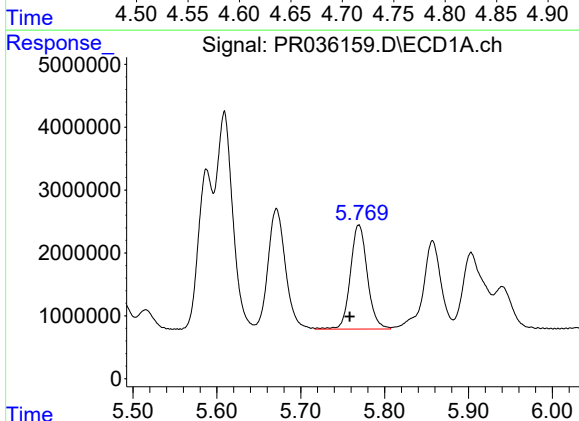
R.T.: 5.588 min
 Delta R.T.: -0.010 min
 Response: 28443648
 Conc: 809.75 ng/ml

Instrument :
 ECD_R
 ClientSampleId :
 AR1660CCC500



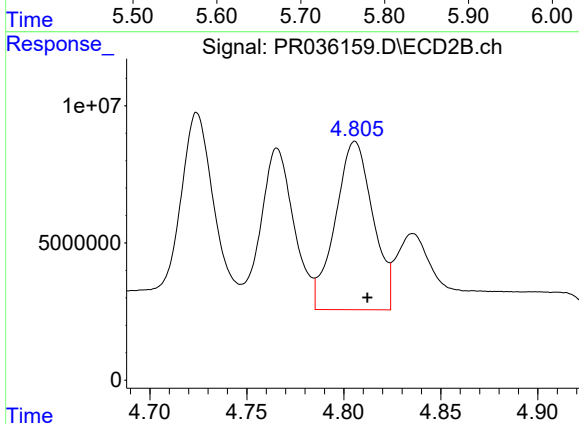
#13 AR-1232-3

R.T.: 4.724 min
 Delta R.T.: -0.007 min
 Response: 99833557
 Conc: 1684.21 ng/ml



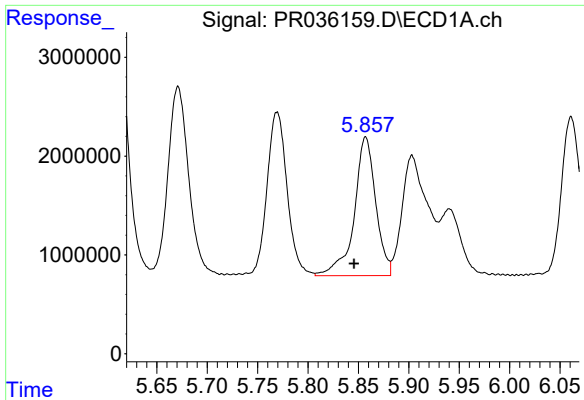
#14 AR-1232-4

R.T.: 5.769 min
 Delta R.T.: 0.011 min
 Response: 23265054
 Conc: 1359.63 ng/ml



#14 AR-1232-4

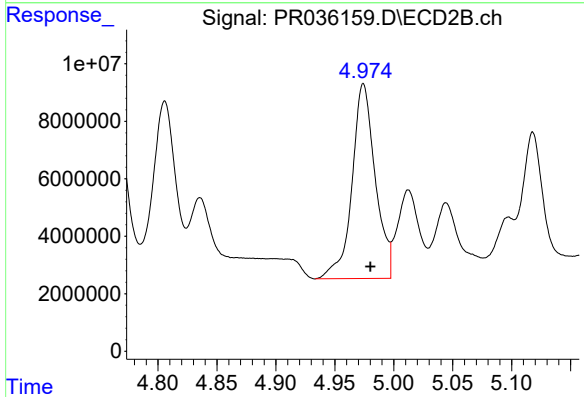
R.T.: 4.806 min
 Delta R.T.: -0.006 min
 Response: 82754594
 Conc: 1614.93 ng/ml



#15 AR-1232-5

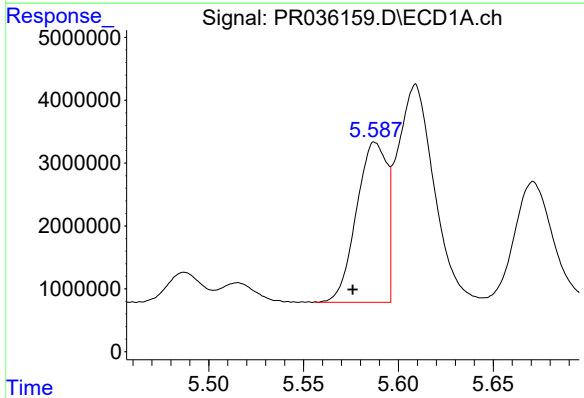
R.T.: 5.857 min
 Delta R.T.: 0.011 min
 Response: 20814053
 Conc: 1489.25 ng/ml

Instrument :
 ECD_R
 ClientSampleId :
 AR1660CCC500



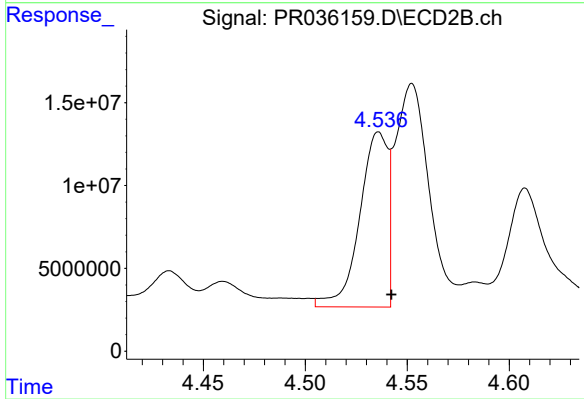
#15 AR-1232-5

R.T.: 4.974 min
 Delta R.T.: -0.006 min
 Response: 93053380
 Conc: 1592.90 ng/ml



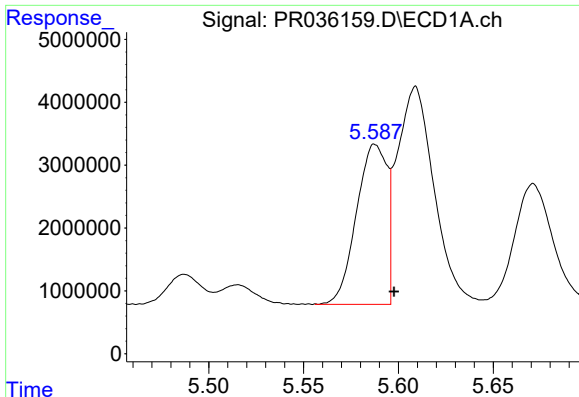
#16 AR-1242-1

R.T.: 5.588 min
 Delta R.T.: 0.012 min
 Response: 28443648
 Conc: 649.16 ng/ml



#16 AR-1242-1

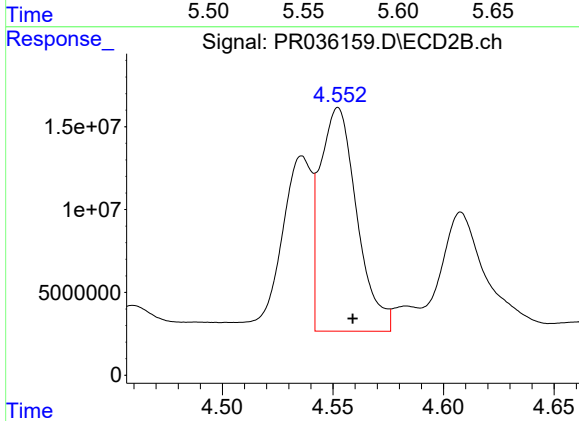
R.T.: 4.536 min
 Delta R.T.: -0.006 min
 Response: 101197834
 Conc: 680.18 ng/ml



#17 AR-1242-2

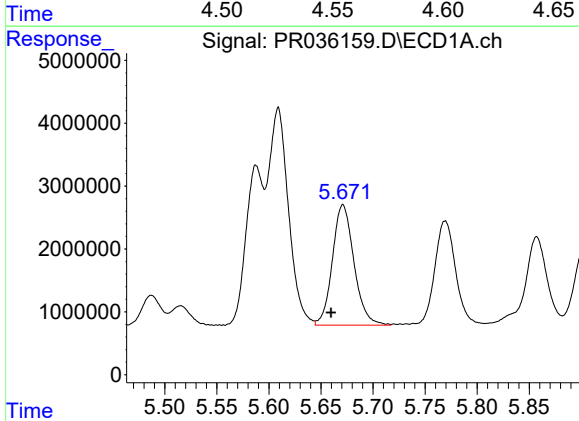
R.T.: 5.588 min
 Delta R.T.: -0.010 min
 Response: 28443648
 Conc: 415.26 ng/ml

Instrument :
 ECD_R
 ClientSampleId :
 AR1660CCC500



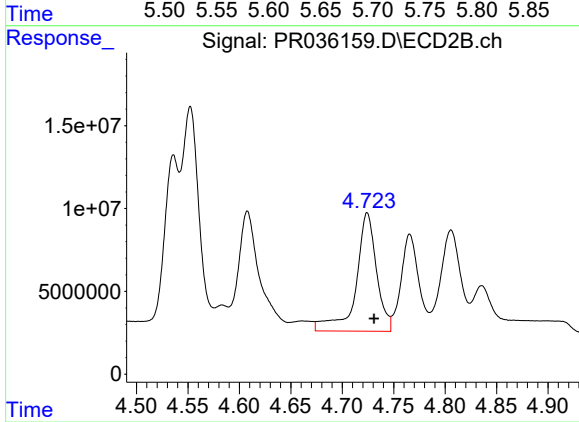
#17 AR-1242-2

R.T.: 4.552 min
 Delta R.T.: -0.007 min
 Response: 156293253
 Conc: 668.34 ng/ml



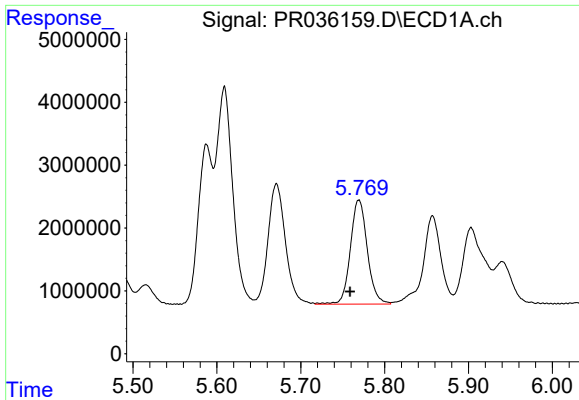
#18 AR-1242-3

R.T.: 5.671 min
 Delta R.T.: 0.011 min
 Response: 27626235
 Conc: 661.01 ng/ml



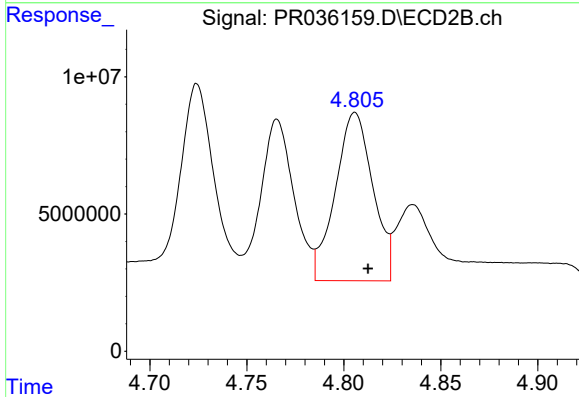
#18 AR-1242-3

R.T.: 4.724 min
 Delta R.T.: -0.007 min
 Response: 99833557
 Conc: 830.95 ng/ml

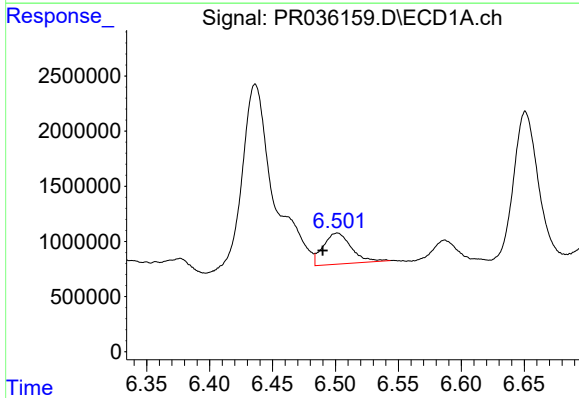


#19 AR-1242-4
 R.T.: 5.769 min
 Delta R.T.: 0.011 min
 Response: 23265054
 Conc: 677.20 ng/ml

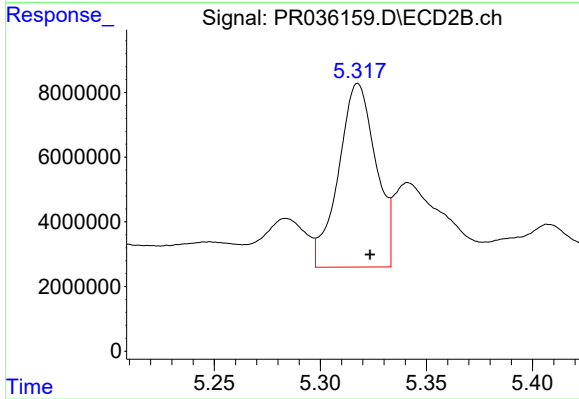
Instrument :
 ECD_R
ClientSampleId :
 AR1660CCC500



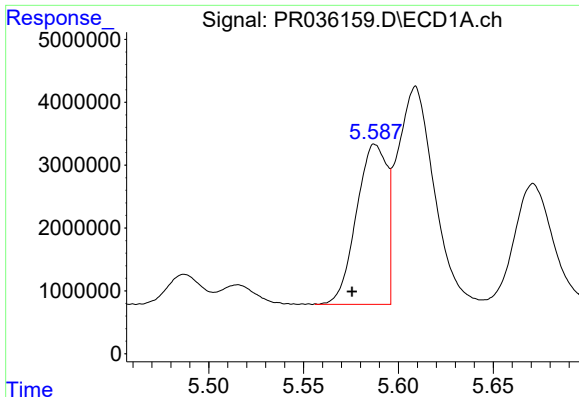
#19 AR-1242-4
 R.T.: 4.806 min
 Delta R.T.: -0.007 min
 Response: 82754594
 Conc: 723.37 ng/ml



#20 AR-1242-5
 R.T.: 6.501 min
 Delta R.T.: 0.012 min
 Response: 4382334
 Conc: 106.63 ng/ml



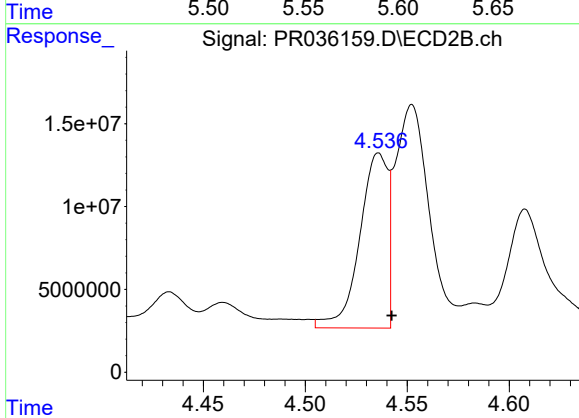
#20 AR-1242-5
 R.T.: 5.318 min
 Delta R.T.: -0.006 min
 Response: 69636894
 Conc: 394.58 ng/ml



#21 AR-1248-1

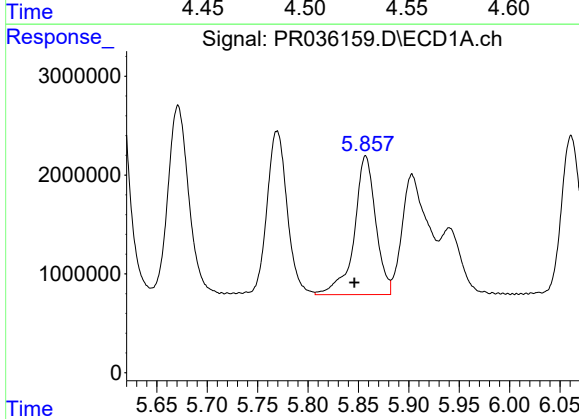
R.T.: 5.588 min
 Delta R.T.: 0.012 min
 Response: 28443648
 Conc: 811.14 ng/ml

Instrument :
 ECD_R
 ClientSampleId :
 AR1660CCC500



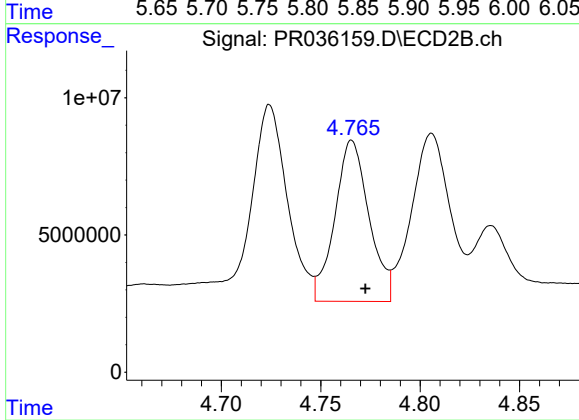
#21 AR-1248-1

R.T.: 4.536 min
 Delta R.T.: -0.006 min
 Response: 101197834
 Conc: 840.58 ng/ml



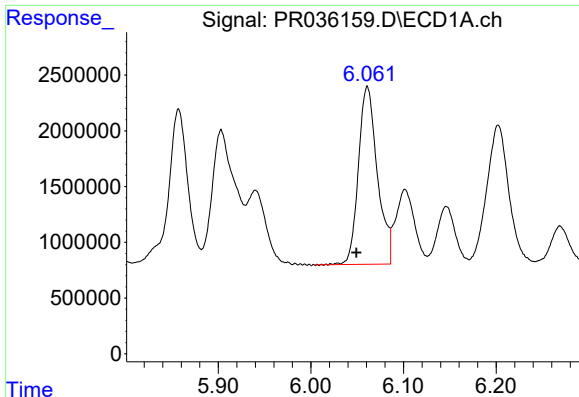
#22 AR-1248-2

R.T.: 5.857 min
 Delta R.T.: 0.011 min
 Response: 20814053
 Conc: 396.32 ng/ml



#22 AR-1248-2

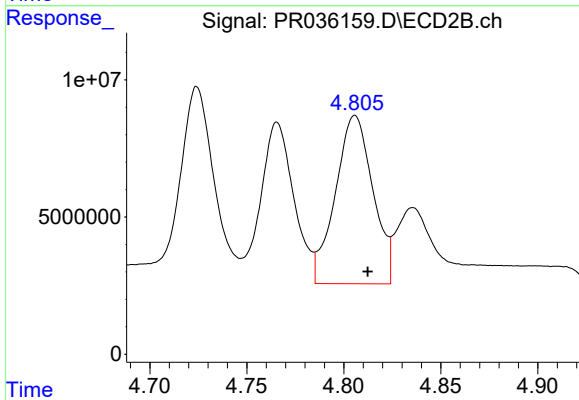
R.T.: 4.766 min
 Delta R.T.: -0.007 min
 Response: 70176963
 Conc: 426.12 ng/ml



#23 AR-1248-3

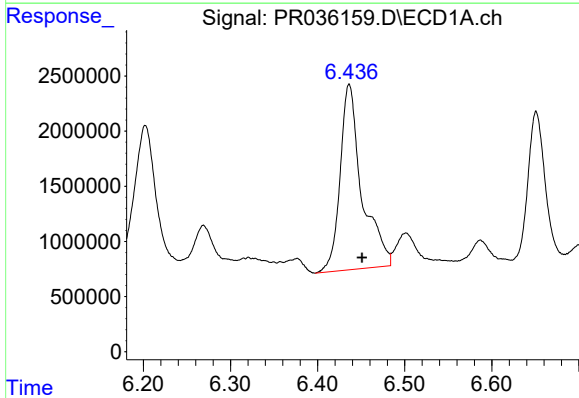
R.T.: 6.061 min
 Delta R.T.: 0.012 min
 Response: 22642721
 Conc: 381.82 ng/ml

Instrument :
 ECD_R
 ClientSampleId :
 AR1660CCC500



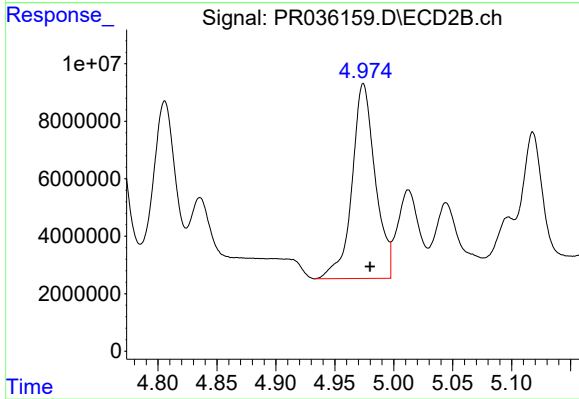
#23 AR-1248-3

R.T.: 4.806 min
 Delta R.T.: -0.006 min
 Response: 82754594
 Conc: 489.00 ng/ml



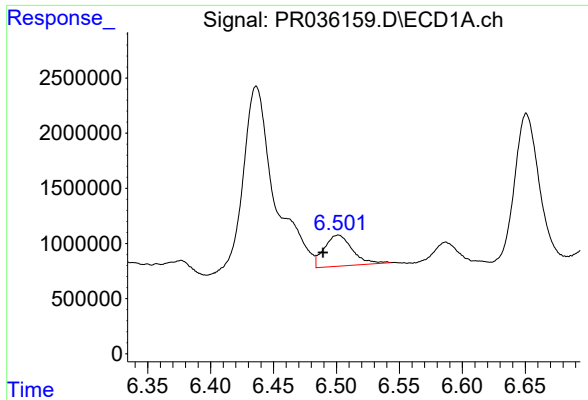
#24 AR-1248-4

R.T.: 6.436 min
 Delta R.T.: -0.015 min
 Response: 29145557
 Conc: 421.05 ng/ml



#24 AR-1248-4

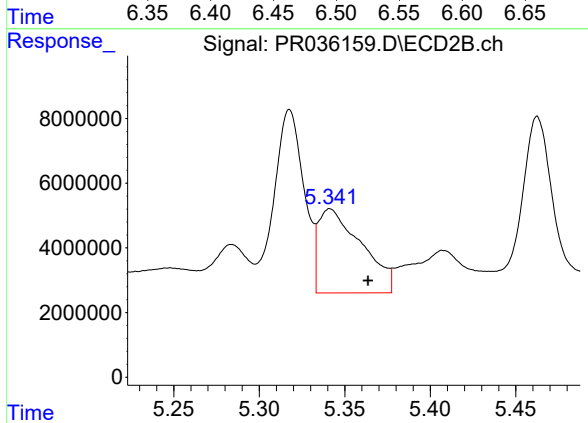
R.T.: 4.974 min
 Delta R.T.: -0.006 min
 Response: 93053380
 Conc: 397.99 ng/ml



#25 AR-1248-5

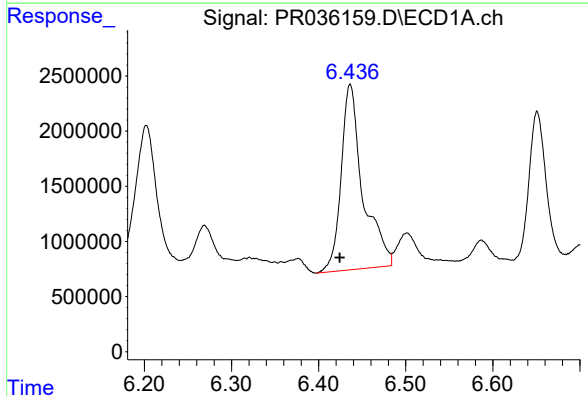
R.T.: 6.501 min
 Delta R.T.: 0.012 min
 Response: 4382334
 Conc: 66.14 ng/ml

Instrument :
 ECD_R
 ClientSampleId :
 AR1660CCC500



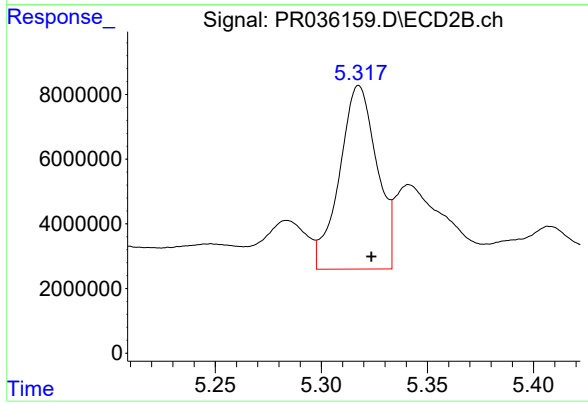
#25 AR-1248-5

R.T.: 5.341 min
 Delta R.T.: -0.022 min
 Response: 45652513
 Conc: 192.96 ng/ml



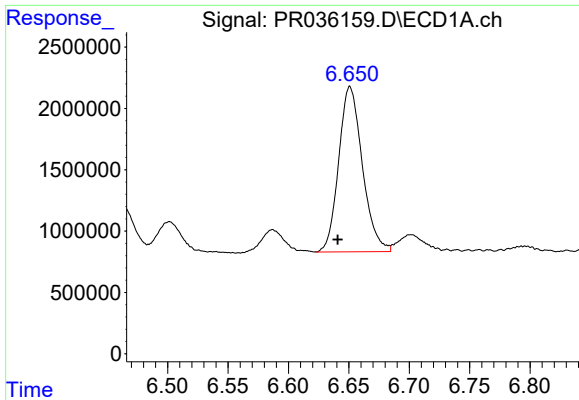
#26 AR-1254-1

R.T.: 6.436 min
 Delta R.T.: 0.012 min
 Response: 29145557
 Conc: 464.47 ng/ml



#26 AR-1254-1

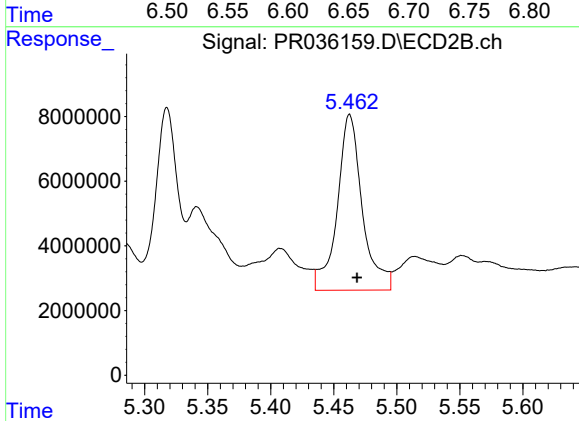
R.T.: 5.318 min
 Delta R.T.: -0.006 min
 Response: 69636894
 Conc: 234.78 ng/ml



#27 AR-1254-2

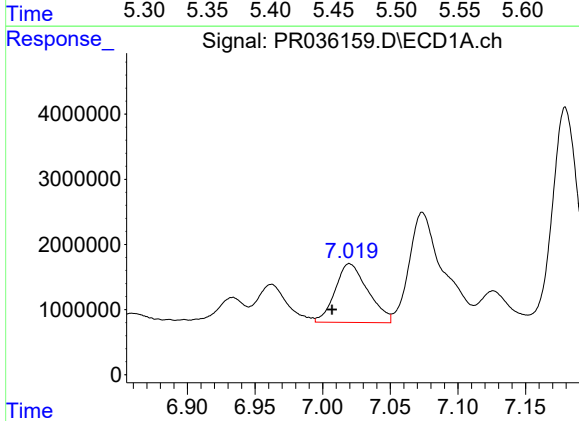
R.T.: 6.651 min
 Delta R.T.: 0.010 min
 Response: 18365869
 Conc: 201.70 ng/ml

Instrument :
 ECD_R
 ClientSampleId :
 AR1660CCC500



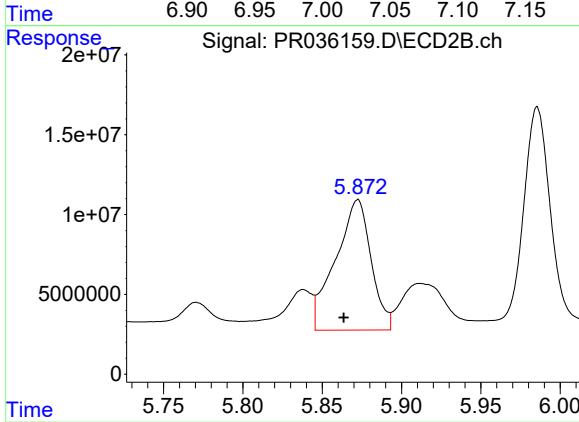
#27 AR-1254-2

R.T.: 5.463 min
 Delta R.T.: -0.006 min
 Response: 75170965
 Conc: 288.39 ng/ml



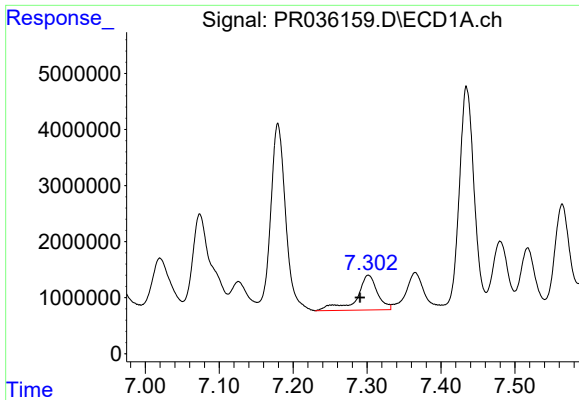
#28 AR-1254-3

R.T.: 7.020 min
 Delta R.T.: 0.013 min
 Response: 15196593
 Conc: 145.95 ng/ml



#28 AR-1254-3

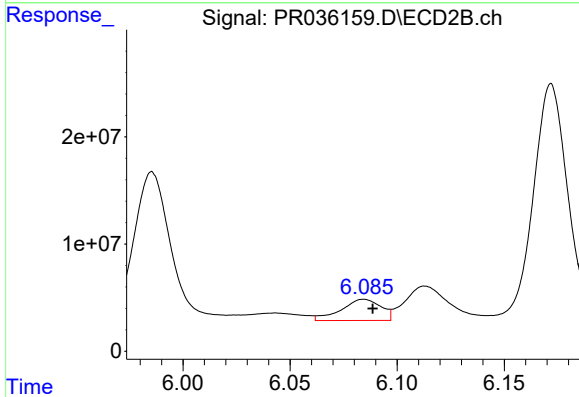
R.T.: 5.872 min
 Delta R.T.: 0.009 min
 Response: 127380044
 Conc: 287.22 ng/ml



#29 AR-1254-4

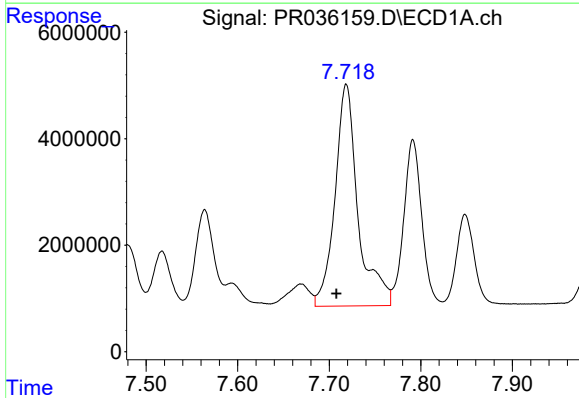
R.T.: 7.302 min
 Delta R.T.: 0.011 min
 Response: 12239278
 Conc: 156.28 ng/ml

Instrument :
 ECD_R
 ClientSampleId :
 AR1660CCC500



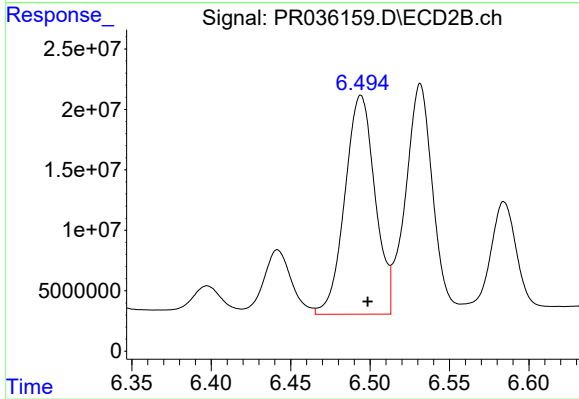
#29 AR-1254-4

R.T.: 6.084 min
 Delta R.T.: -0.004 min
 Response: 25662669
 Conc: 81.89 ng/ml



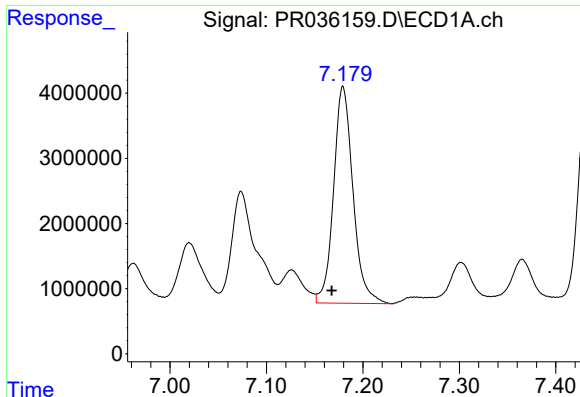
#30 AR-1254-5

R.T.: 7.719 min
 Delta R.T.: 0.011 min
 Response: 72763800
 Conc: 750.09 ng/ml



#30 AR-1254-5

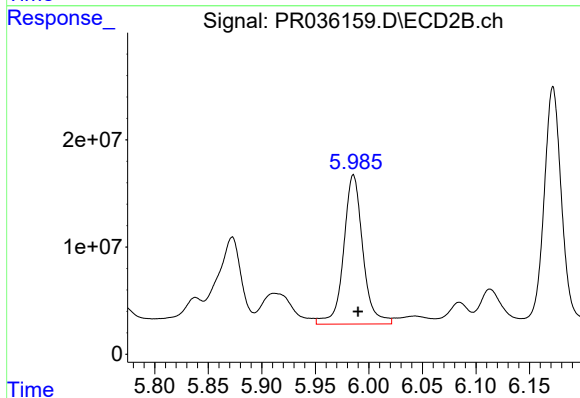
R.T.: 6.494 min
 Delta R.T.: -0.004 min
 Response: 239317031
 Conc: 571.69 ng/ml



#31 AR-1260-1

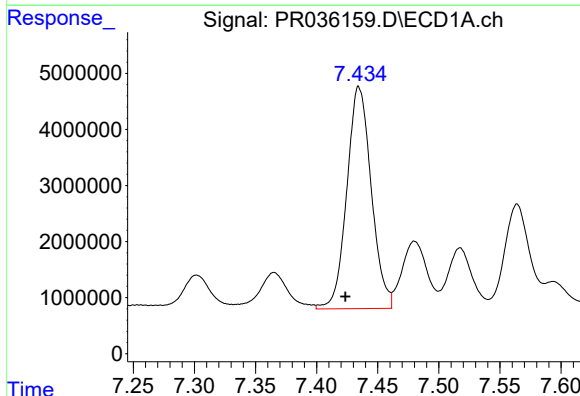
R.T.: 7.179 min
 Delta R.T.: 0.012 min
 Response: 46580109
 Conc: 479.70 ng/ml

Instrument :
 ECD_R
 ClientSampleId :
 AR1660CCC500



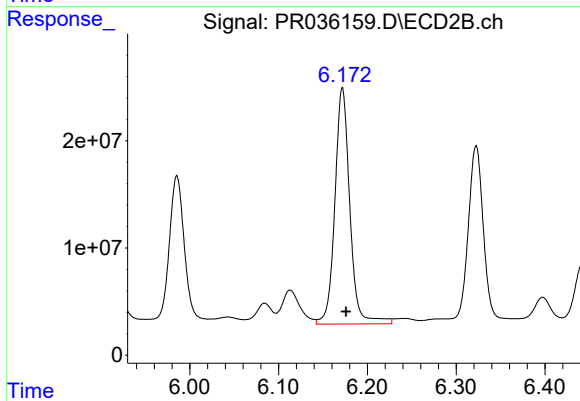
#31 AR-1260-1

R.T.: 5.986 min
 Delta R.T.: -0.004 min
 Response: 173816651
 Conc: 477.30 ng/ml



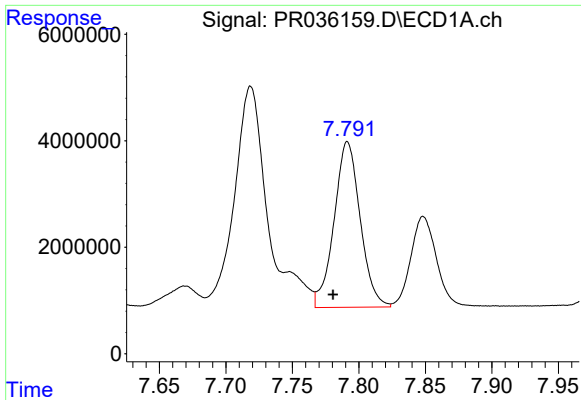
#32 AR-1260-2

R.T.: 7.435 min
 Delta R.T.: 0.011 min
 Response: 55118509
 Conc: 478.94 ng/ml



#32 AR-1260-2

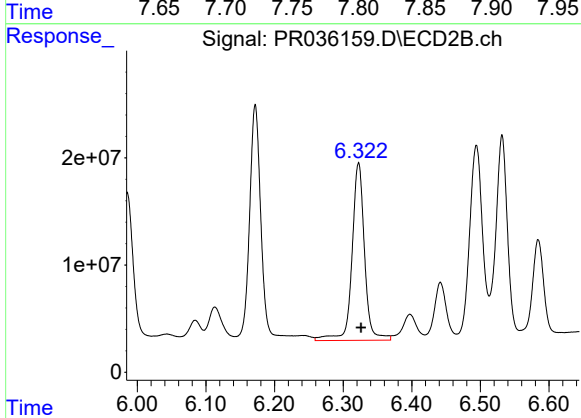
R.T.: 6.172 min
 Delta R.T.: -0.004 min
 Response: 258378542
 Conc: 494.63 ng/ml



#33 AR-1260-3

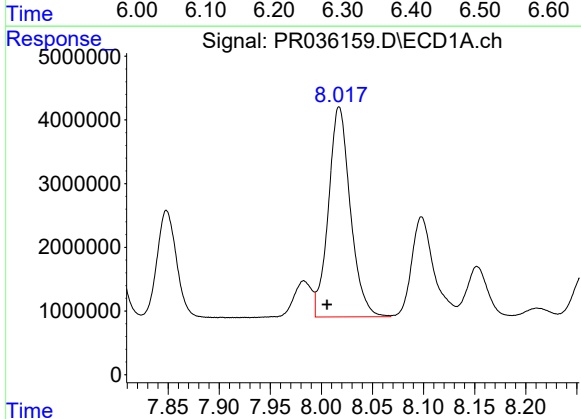
R.T.: 7.791 min
 Delta R.T.: 0.011 min
 Response: 42588680
 Conc: 578.63 ng/ml

Instrument :
 ECD_R
ClientSampleId :
 AR1660CCC500



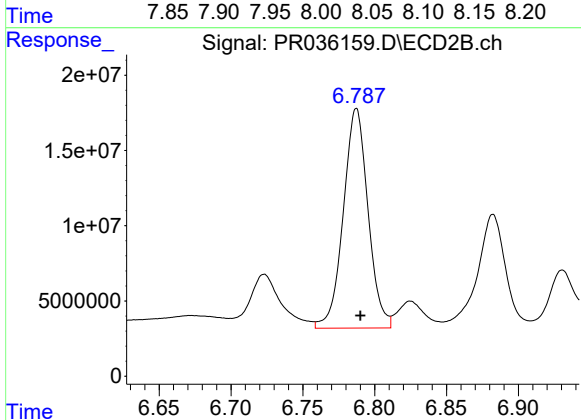
#33 AR-1260-3

R.T.: 6.323 min
 Delta R.T.: -0.004 min
 Response: 210374629
 Conc: 480.63 ng/ml



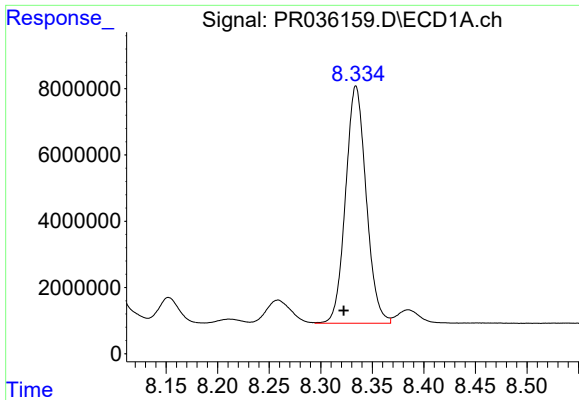
#34 AR-1260-4

R.T.: 8.017 min
 Delta R.T.: 0.012 min
 Response: 49267954
 Conc: 522.19 ng/ml



#34 AR-1260-4

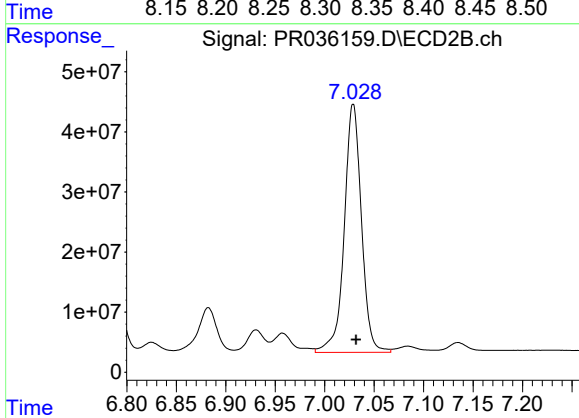
R.T.: 6.787 min
 Delta R.T.: -0.003 min
 Response: 174508725
 Conc: 563.63 ng/ml



#35 AR-1260-5

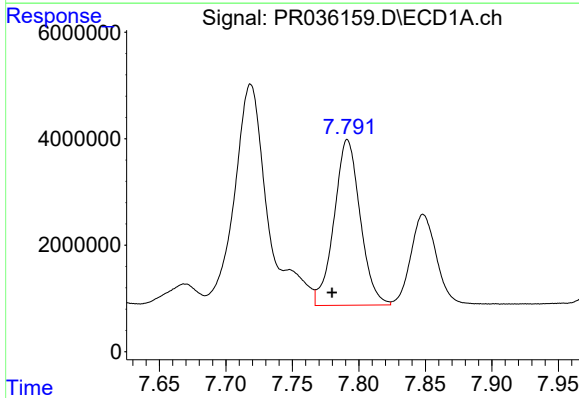
R.T.: 8.334 min
Delta R.T.: 0.012 min
Response: 99608615
Conc: 590.69 ng/ml

Instrument :
ECD_R
ClientSampleId :
AR1660CCC500



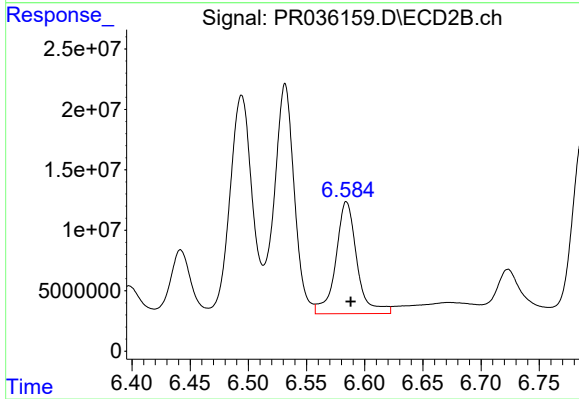
#35 AR-1260-5

R.T.: 7.029 min
Delta R.T.: -0.003 min
Response: 500811945
Conc: 554.48 ng/ml



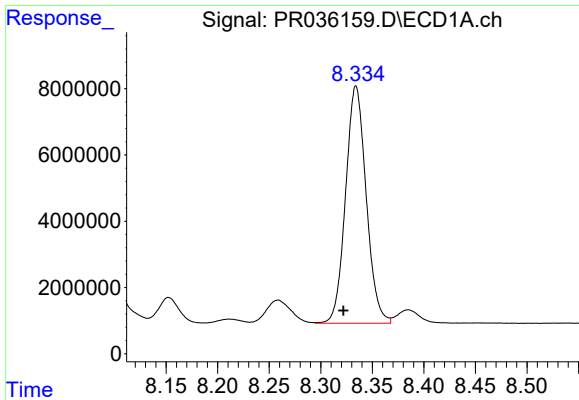
#36 AR-1262-1

R.T.: 7.791 min
Delta R.T.: 0.012 min
Response: 42588680
Conc: 397.43 ng/ml



#36 AR-1262-1

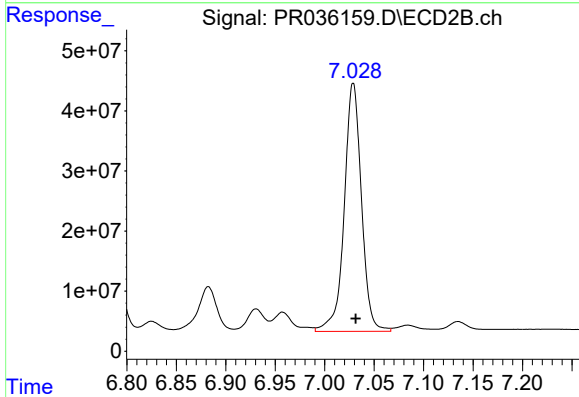
R.T.: 6.584 min
Delta R.T.: -0.004 min
Response: 117538625
Conc: 583.61 ng/ml



#37 AR-1262-2

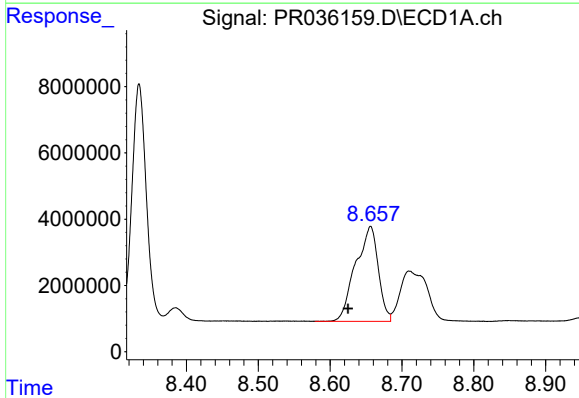
R.T.: 8.334 min
 Delta R.T.: 0.012 min
 Response: 99608615
 Conc: 500.69 ng/ml

Instrument :
 ECD_R
 ClientSampleId :
 AR1660CCC500



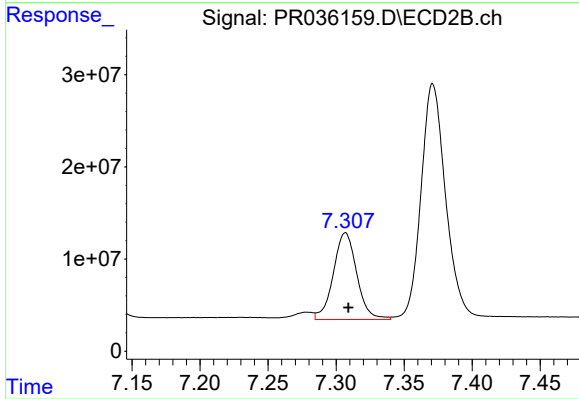
#37 AR-1262-2

R.T.: 7.029 min
 Delta R.T.: -0.002 min
 Response: 500811945
 Conc: 480.61 ng/ml



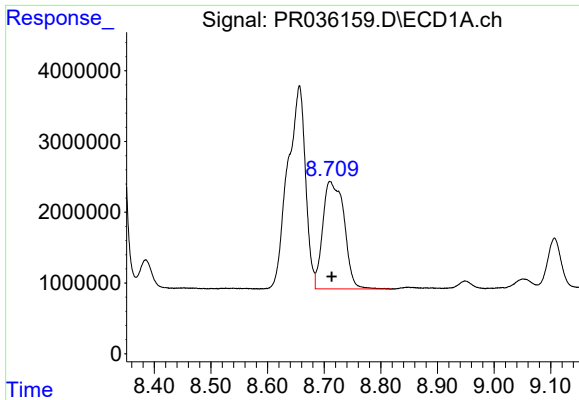
#38 AR-1262-3

R.T.: 8.656 min
 Delta R.T.: 0.031 min
 Response: 62736332
 Conc: 462.83 ng/ml



#38 AR-1262-3

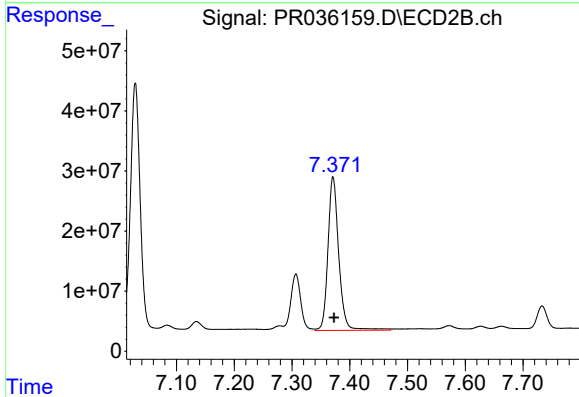
R.T.: 7.307 min
 Delta R.T.: -0.002 min
 Response: 112901706
 Conc: 275.83 ng/ml



#39 AR-1262-4

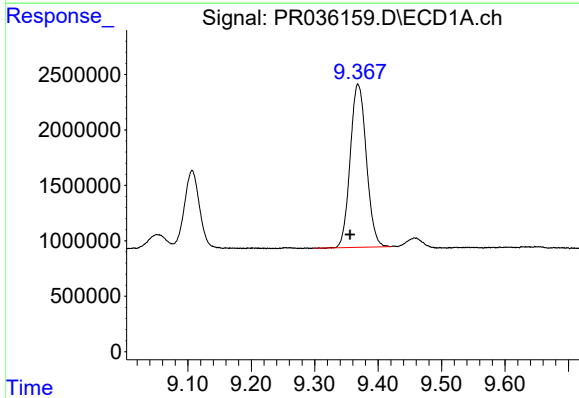
R.T.: 8.710 min
Delta R.T.: -0.003 min
Response: 39888285
Conc: 385.41 ng/ml

Instrument :
ECD_R
ClientSampleId :
AR1660CCC500



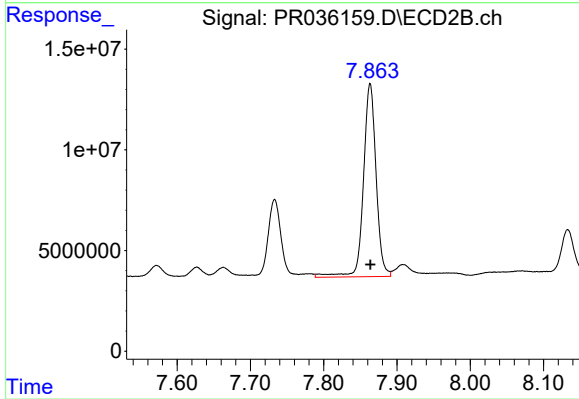
#39 AR-1262-4

R.T.: 7.371 min
Delta R.T.: -0.002 min
Response: 331676206
Conc: 458.73 ng/ml



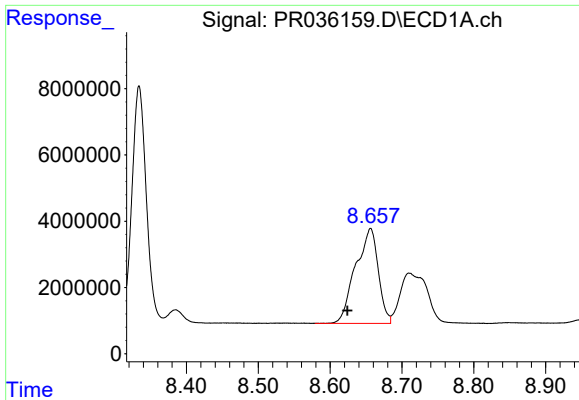
#40 AR-1262-5

R.T.: 9.368 min
Delta R.T.: 0.012 min
Response: 25973791
Conc: 365.90 ng/ml



#40 AR-1262-5

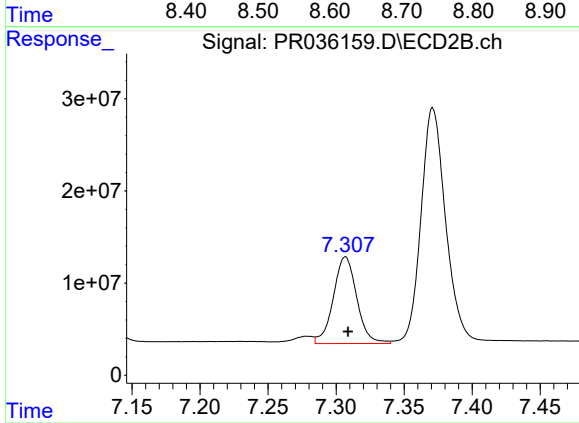
R.T.: 7.863 min
Delta R.T.: 0.000 min
Response: 115038381
Conc: 350.15 ng/ml



#41 AR-1268-1

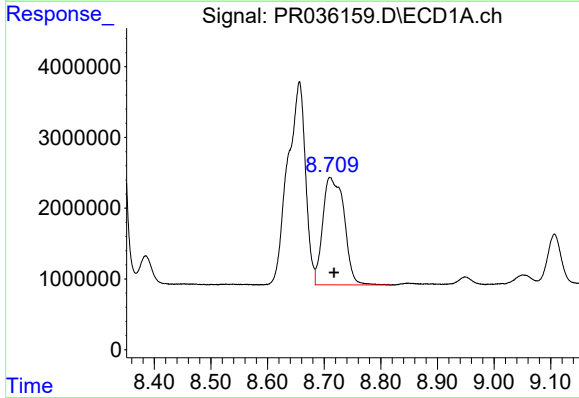
R.T.: 8.656 min
Delta R.T.: 0.032 min
Response: 62736332
Conc: 260.45 ng/ml

Instrument :
ECD_R
ClientSampleId :
AR1660CCC500



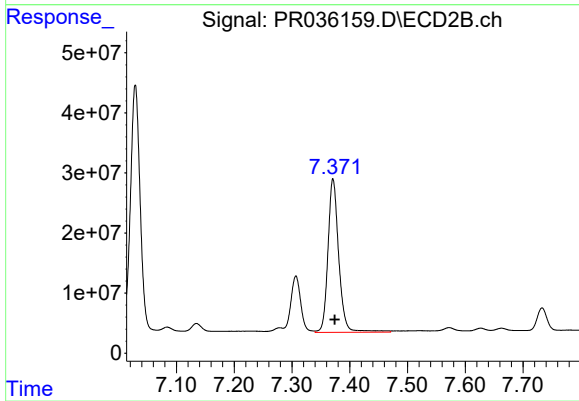
#41 AR-1268-1

R.T.: 7.307 min
Delta R.T.: -0.002 min
Response: 112901706
Conc: 89.31 ng/ml



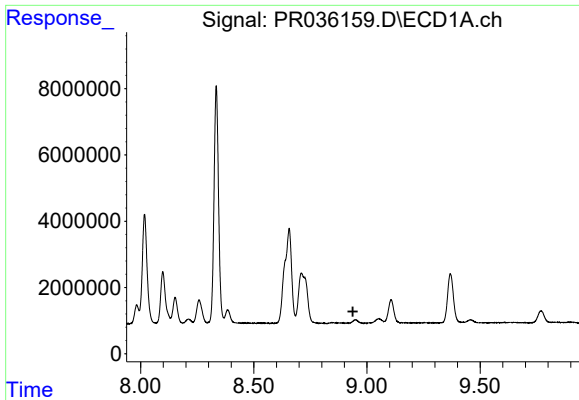
#42 AR-1268-2

R.T.: 8.710 min
Delta R.T.: -0.007 min
Response: 39888285
Conc: 182.65 ng/ml



#42 AR-1268-2

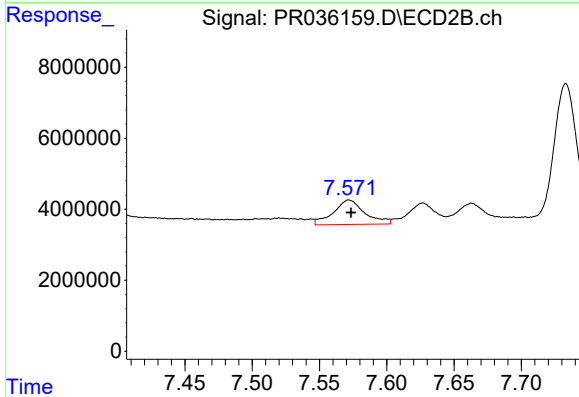
R.T.: 7.371 min
Delta R.T.: -0.003 min
Response: 331676206
Conc: 292.51 ng/ml



#43 AR-1268-3

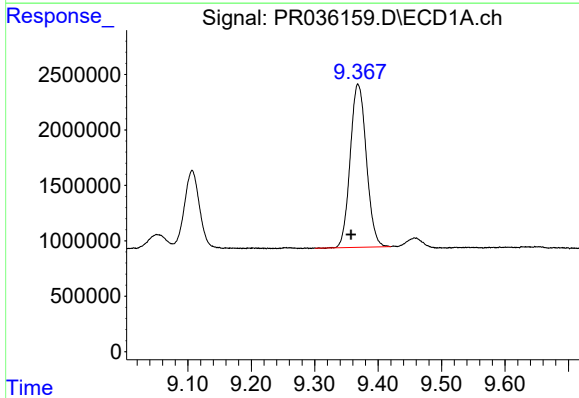
R.T.: 0.000 min
 Exp R.T.: 8.938 min
 Response: 0
 Conc: N.D.

Instrument :
 ECD_R
 ClientSampleId :
 AR1660CCC500



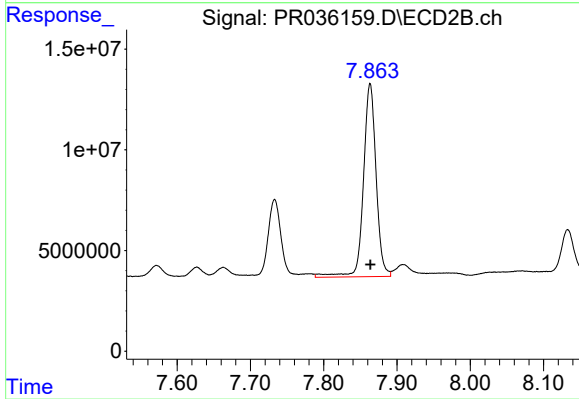
#43 AR-1268-3

R.T.: 7.572 min
 Delta R.T.: -0.001 min
 Response: 11354235
 Conc: 11.57 ng/ml



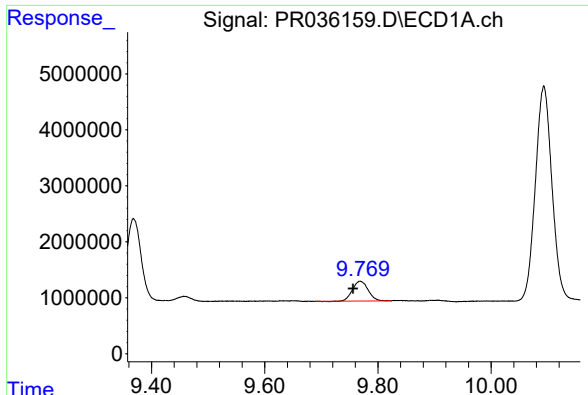
#44 AR-1268-4

R.T.: 9.368 min
 Delta R.T.: 0.011 min
 Response: 25973791
 Conc: 342.15 ng/ml



#44 AR-1268-4

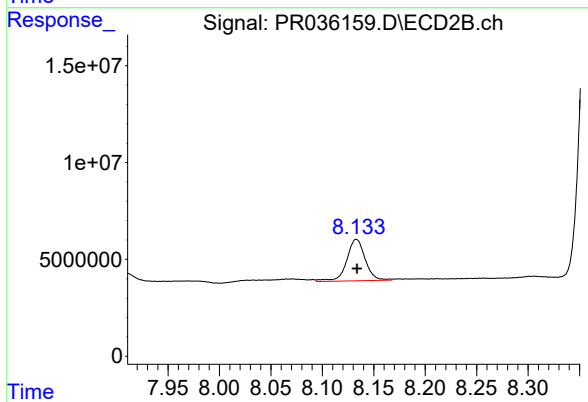
R.T.: 7.863 min
 Delta R.T.: 0.000 min
 Response: 115038381
 Conc: 321.61 ng/ml



#45 AR-1268-5

R.T.: 9.768 min
Delta R.T.: 0.012 min
Response: 6713940
Conc: 12.20 ng/ml

Instrument :
ECD_R
ClientSampleId :
AR1660CCC500



#45 AR-1268-5

R.T.: 8.133 min
Delta R.T.: 0.000 min
Response: 26786124
Conc: 10.07 ng/ml