

Data Path : Z:\pestpcbsrv\HPCHEM1\ECD_R\Data\PR040419\
 Data File : PR036890.D
 Signal(s) : Signal #1: ECD1A.ch Signal #2: ECD2B.ch
 Acq On : 04 Apr 2019 15:42
 Operator : SM\SJ
 Sample : K2203-03
 Misc :
 ALS Vial : 13 Sample Multiplier: 1

Instrument :
 ECD_R
 ClientSampleId :
 SU-03-040219-B

Integration File signal 1: autoint1.e
 Integration File signal 2: autoint2.e
 Quant Time: Apr 05 02:30:10 2019
 Quant Method : Z:\pestpcbsrv\HPCHEM1\ECD_R\Method\PR040219.M
 Quant Title : GC EXTRACTABLES
 QLast Update : Wed Apr 03 03:09:33 2019
 Response via : Initial Calibration
 Integrator: ChemStation

Volume Inj. : 2 µl
 Signal #1 Phase : ZB-MR1 Signal #2 Phase: ZB-MR2
 Signal #1 Info : 30Mx0.32mmx 0.50µ Signal #2 Info : 30M x 0.32mm x 0.25µm

Compound	RT#1	RT#2	Resp#1	Resp#2	ng/ml	ng/ml
System Monitoring Compounds						
1) SA Tetrachlo...	4.397	3.469	32866813	127.2E6	20.630	21.718
2) SA Decachlor...	10.040	8.325	29663310	99546415	15.833	12.471
Target Compounds						
5) L1 AR-1016-3	0.000	4.750	0	6185116	N.D.	31.709 #
6) L1 AR-1016-4	0.000	4.750	0	6185116	N.D.	40.731 #
7) L1 AR-1016-5	0.000	4.968	0	7861468	N.D.	37.827 #
10) L2 AR-1221-3	0.000	3.876	0	4415710	N.D.	29.331 #
11) L3 AR-1232-1	0.000	3.876	0	4415710	N.D.	46.704 #
13) L3 AR-1232-3	0.000	4.750	0	6185116	N.D.	107.648 #
14) L3 AR-1232-4	0.000	4.811	0	8294042	N.D.	167.668 #
15) L3 AR-1232-5	0.000	4.968	0	7861468	N.D.	137.169 #
18) L4 AR-1242-3	0.000	4.750	0	6185116	N.D.	64.689 #
19) L4 AR-1242-4	0.000	4.811	0	8294042	N.D.	91.862 #
20) L4 AR-1242-5	6.436	5.305	5157861	5973874	167.859	43.272 #
22) L5 AR-1248-2	0.000	4.750	0	6185116	N.D.	45.803 #
23) L5 AR-1248-3	0.000	4.811	0	8294042	N.D.	59.595 #
24) L5 AR-1248-4	6.436	4.968	5157861	7861468	95.992	44.576 #
25) L5 AR-1248-5	6.436	5.305	5157861	5973874	99.529	30.728 #
26) L6 AR-1254-1	6.436	5.305	5157861	5973874	88.990	18.164 #
27) L6 AR-1254-2	6.680	5.464	7231782	6395448	77.443	21.602 #
28) L6 AR-1254-3	0.000	5.852	0	6472027	N.D.	12.722 #
30) L6 AR-1254-5	0.000	6.467	0	2837074	N.D.	5.580 #
32) L7 AR-1260-2	7.396	6.144	3721387	5719312	30.327	8.744 #
33) L7 AR-1260-3	0.000	6.268	0	7749191	N.D.	14.652 #
35) L7 AR-1260-5	0.000	7.001	0	3671939	N.D.	2.758 #
37) L8 AR-1262-2	0.000	7.001	0	3671939	N.D.	2.679 #
38) L8 AR-1262-3	0.000	7.333	0	4841109	N.D.	8.869 #
39) L8 AR-1262-4	0.000	7.333	0	4841109	N.D.	5.270 #
41) L9 AR-1268-1	0.000	7.333	0	4841109	N.D.	3.271 #
42) L9 AR-1268-2	0.000	7.333	0	4841109	N.D.	3.856 #

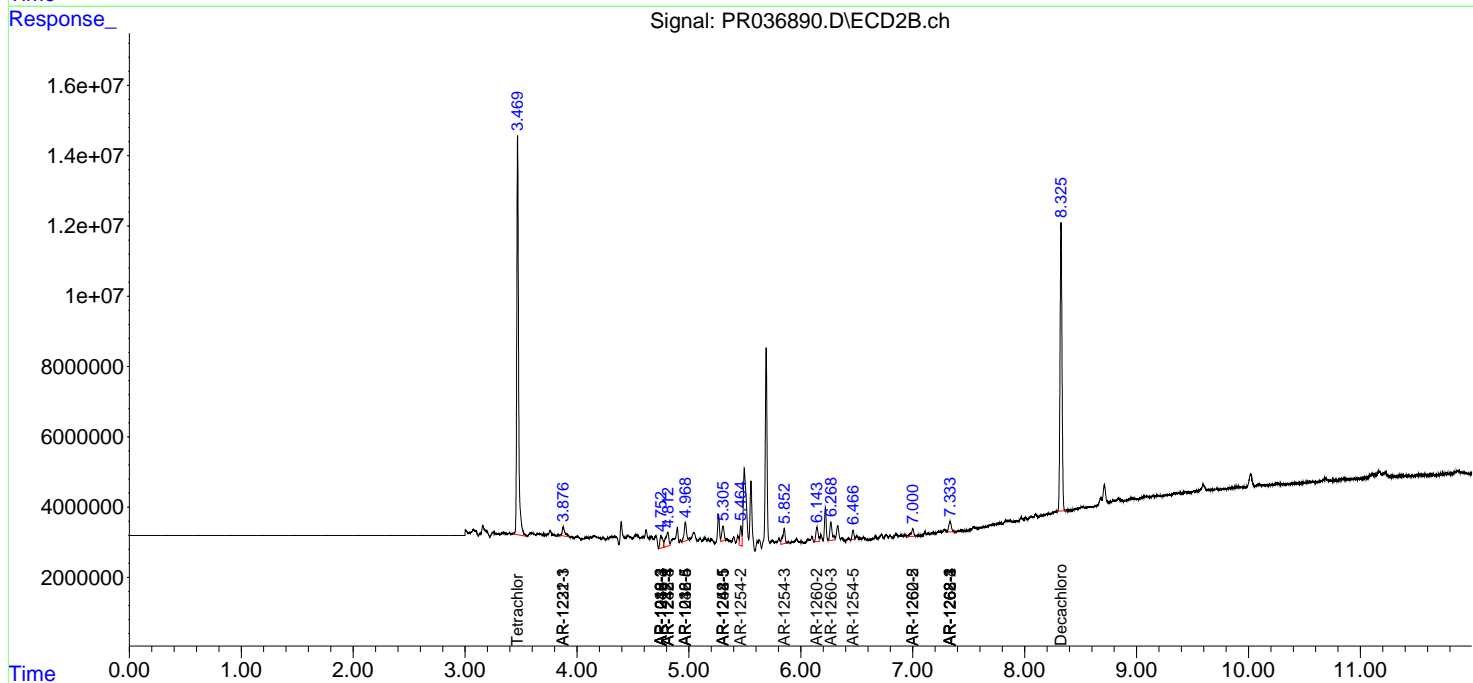
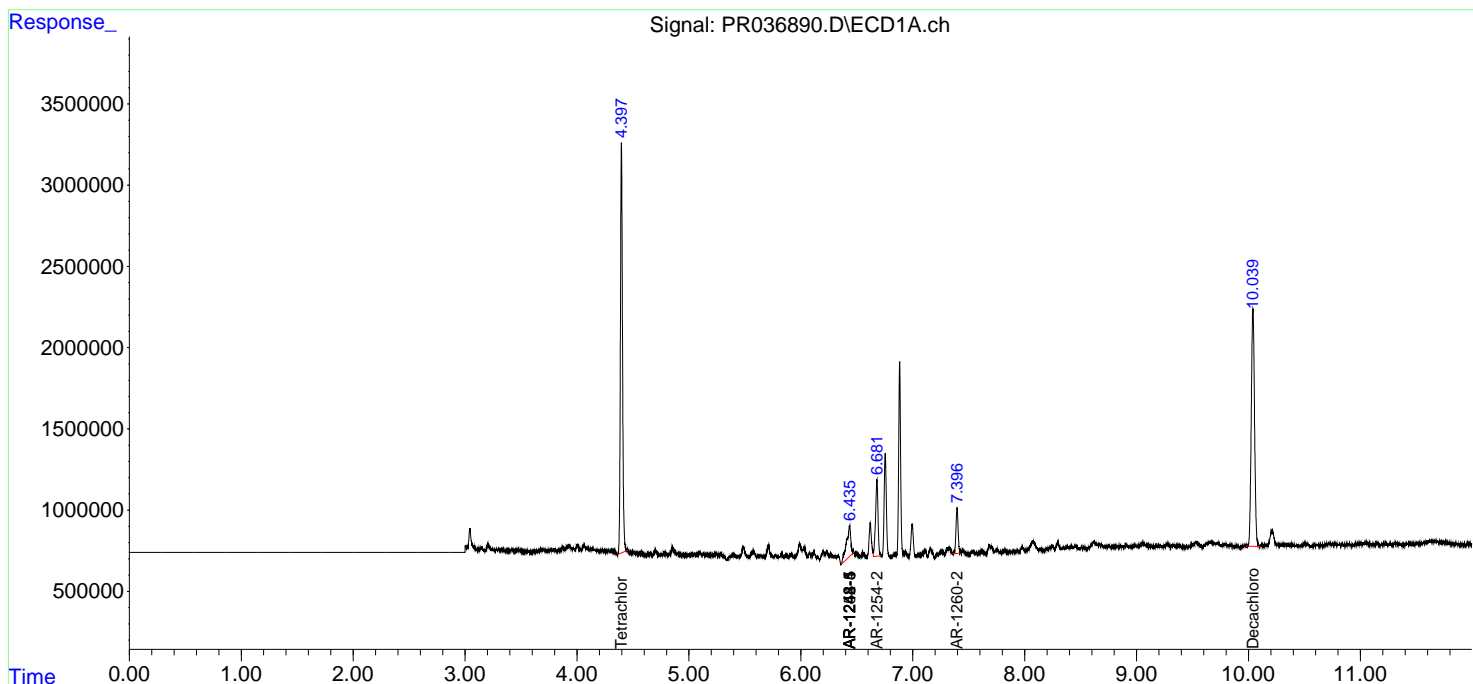
(f)=RT Delta > 1/2 Window (#)=Amounts differ by > 25% (m)=manual int.

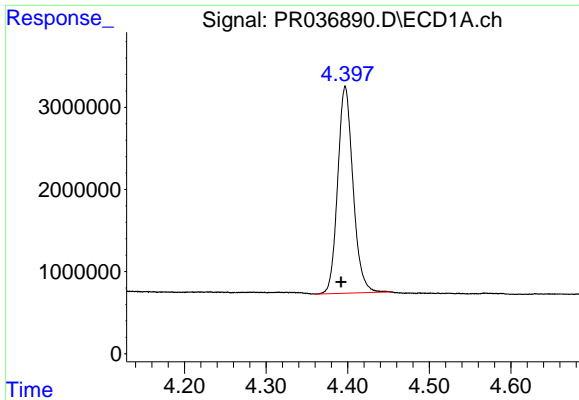
Data Path : Z:\pestpcbsrv\HPCHEM1\ECD_R\Data\PR040419\
 Data File : PR036890.D
 Signal(s) : Signal #1: ECD1A.ch Signal #2: ECD2B.ch
 Acq On : 04 Apr 2019 15:42
 Operator : SM\SJ
 Sample : K2203-03
 Misc :
 ALS Vial : 13 Sample Multiplier: 1

Instrument :
 ECD_R
 ClientSampled :
 SU-03-040219-B

Integration File signal 1: autoint1.e
 Integration File signal 2: autoint2.e
 Quant Time: Apr 05 02:30:10 2019
 Quant Method : Z:\pestpcbsrv\HPCHEM1\ECD_R\Method\PR040219.M
 Quant Title : GC EXTRACTABLES
 QLast Update : Wed Apr 03 03:09:33 2019
 Response via : Initial Calibration
 Integrator: ChemStation

Volume Inj. : 2 µl
 Signal #1 Phase : ZB-MR1 Signal #2 Phase: ZB-MR2
 Signal #1 Info : 30Mx0.32mmx 0.50µ Signal #2 Info : 30M x 0.32mm x 0.25µm

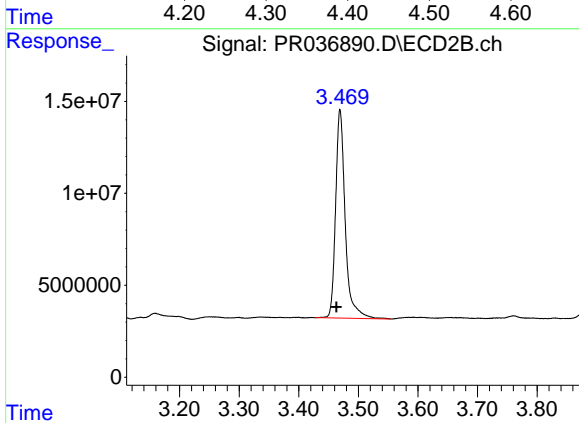




#1 Tetrachloro-m-xylene

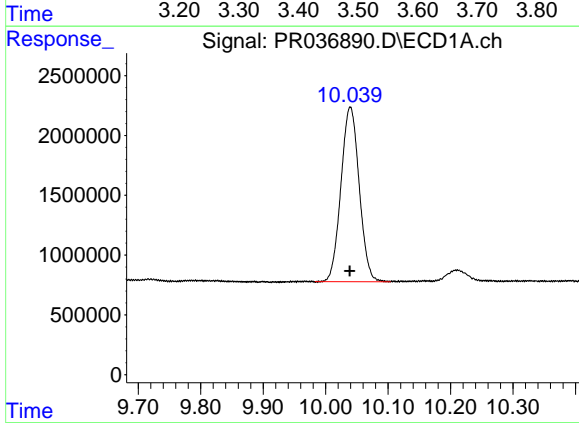
R.T.: 4.397 min
 Delta R.T.: 0.005 min
 Response: 32866813
 Conc: 20.63 ng/ml

Instrument :
 ECD_R
 ClientSampled :
 SU-03-040219-B



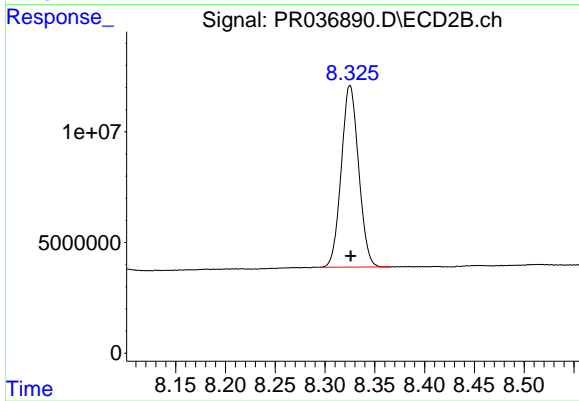
#1 Tetrachloro-m-xylene

R.T.: 3.469 min
 Delta R.T.: 0.006 min
 Response: 127221356
 Conc: 21.72 ng/ml



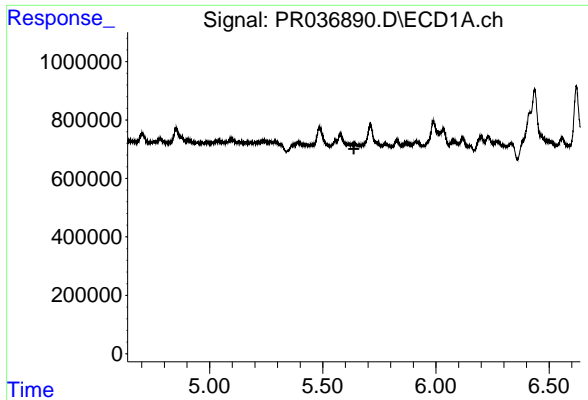
#2 Decachlorobiphenyl

R.T.: 10.040 min
 Delta R.T.: 0.000 min
 Response: 29663310
 Conc: 15.83 ng/ml



#2 Decachlorobiphenyl

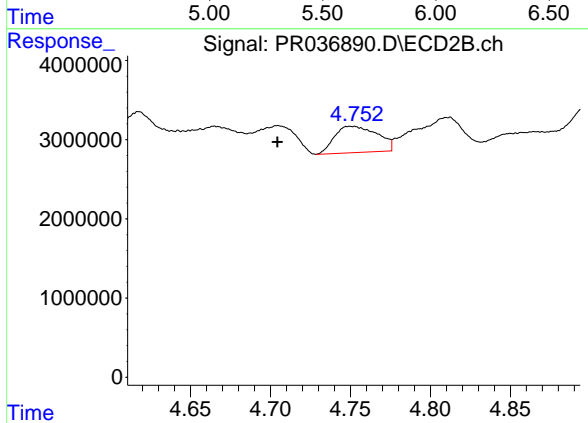
R.T.: 8.325 min
 Delta R.T.: 0.000 min
 Response: 99546415
 Conc: 12.47 ng/ml



#5 AR-1016-3

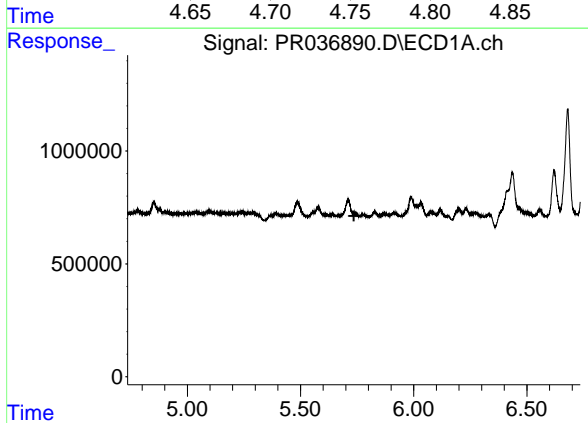
R.T.: 0.000 min
 Exp R.T.: 5.638 min
 Response: 0
 Conc: N.D.

Instrument :
 ECD_R
 ClientSampleId :
 SU-03-040219-B



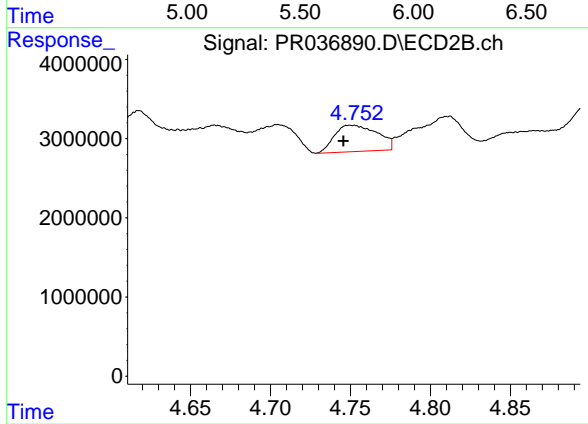
#5 AR-1016-3

R.T.: 4.750 min
 Delta R.T.: 0.046 min
 Response: 6185116
 Conc: 31.71 ng/ml



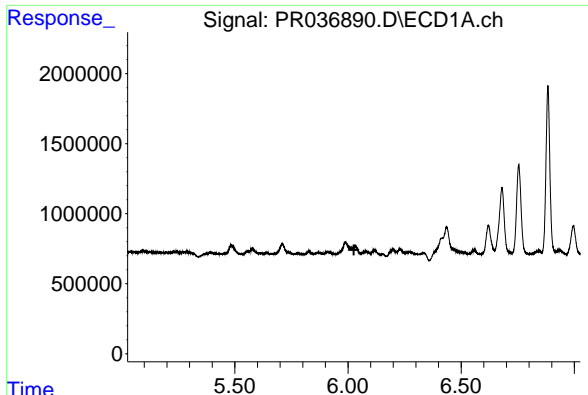
#6 AR-1016-4

R.T.: 0.000 min
 Exp R.T.: 5.736 min
 Response: 0
 Conc: N.D.



#6 AR-1016-4

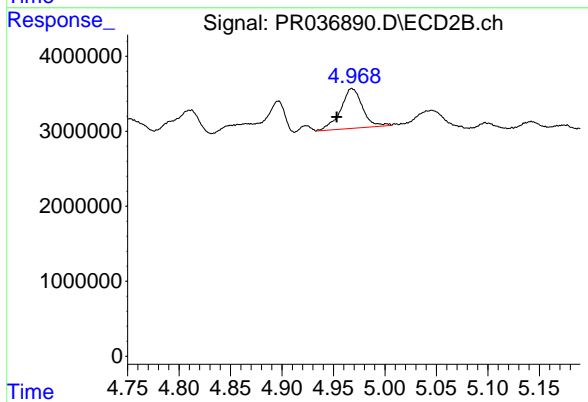
R.T.: 4.750 min
 Delta R.T.: 0.005 min
 Response: 6185116
 Conc: 40.73 ng/ml



#7 AR-1016-5

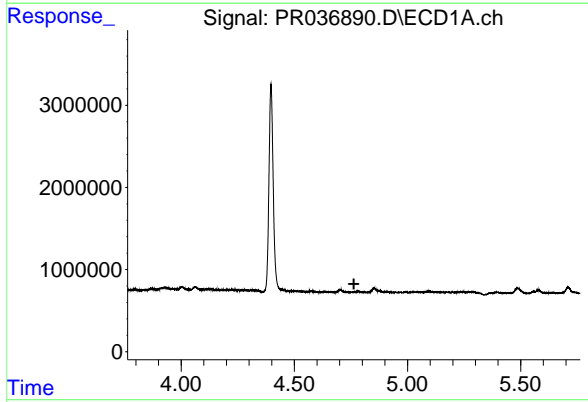
R.T.: 0.000 min
 Exp R.T. : 6.026 min
 Response: 0
 Conc: N.D.

Instrument :
 ECD_R
 ClientSampleId :
 SU-03-040219-B



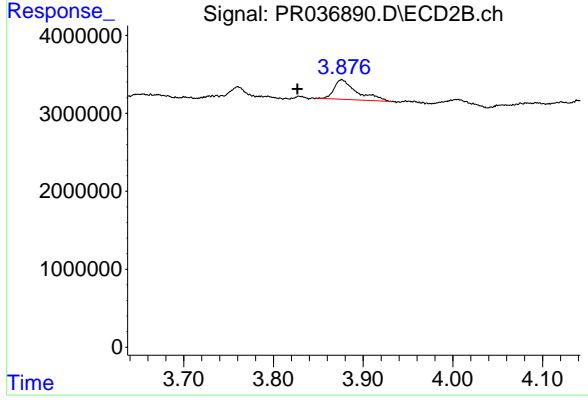
#7 AR-1016-5

R.T.: 4.968 min
 Delta R.T.: 0.015 min
 Response: 7861468
 Conc: 37.83 ng/ml



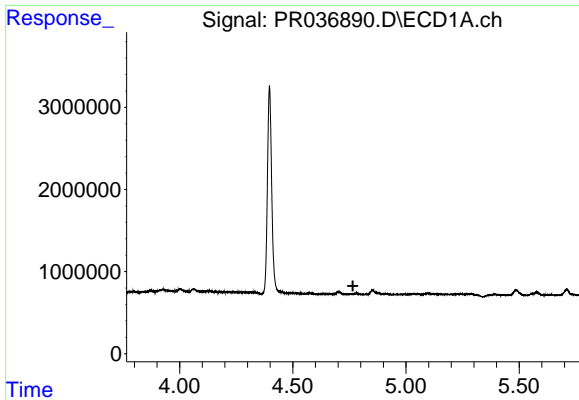
#10 AR-1221-3

R.T.: 0.000 min
 Exp R.T. : 4.763 min
 Response: 0
 Conc: N.D.



#10 AR-1221-3

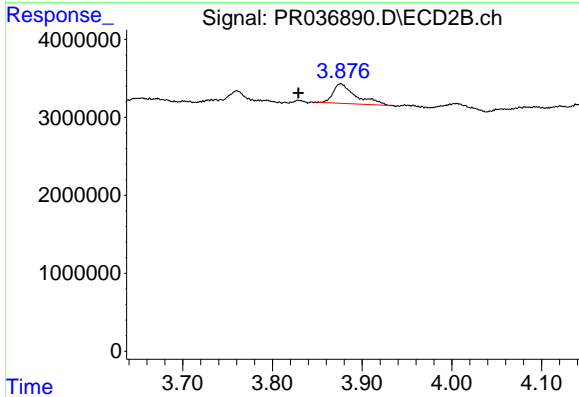
R.T.: 3.876 min
 Delta R.T.: 0.049 min
 Response: 4415710
 Conc: 29.33 ng/ml



#11 AR-1232-1

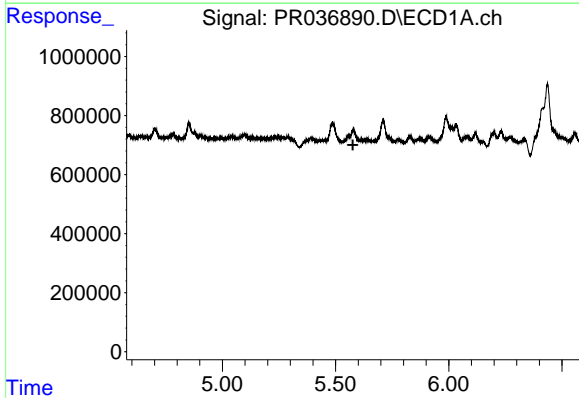
R.T.: 0.000 min
 Exp R.T. : 4.766 min
 Response: 0
 Conc: N.D.

Instrument :
 ECD_R
ClientSampleId :
 SU-03-040219-B



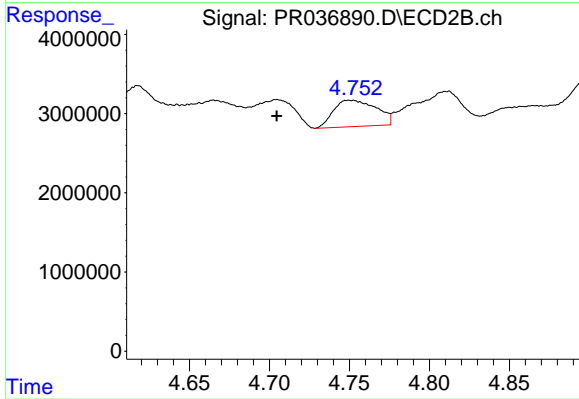
#11 AR-1232-1

R.T.: 3.876 min
 Delta R.T.: 0.047 min
 Response: 4415710
 Conc: 46.70 ng/ml



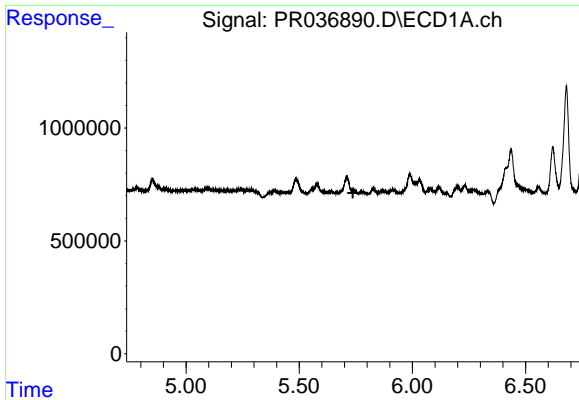
#13 AR-1232-3

R.T.: 0.000 min
 Exp R.T. : 5.576 min
 Response: 0
 Conc: N.D.



#13 AR-1232-3

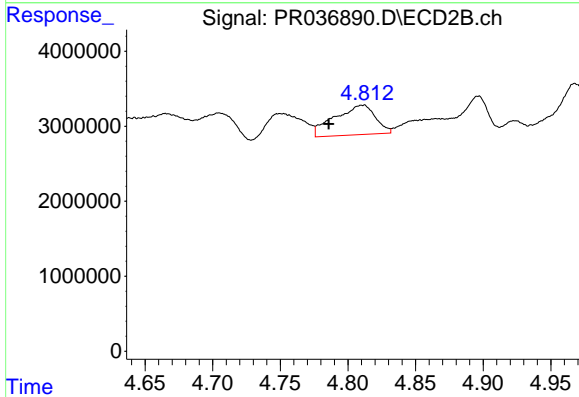
R.T.: 4.750 min
 Delta R.T.: 0.046 min
 Response: 6185116
 Conc: 107.65 ng/ml



#14 AR-1232-4

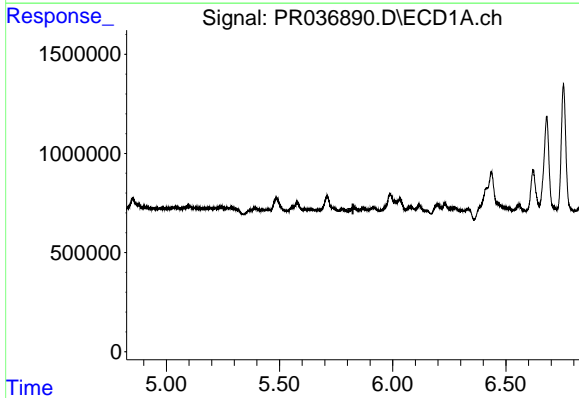
R.T.: 0.000 min
 Exp R.T. : 5.737 min
 Response: 0
 Conc: N.D.

Instrument :
 ECD_R
ClientSampleId :
 SU-03-040219-B



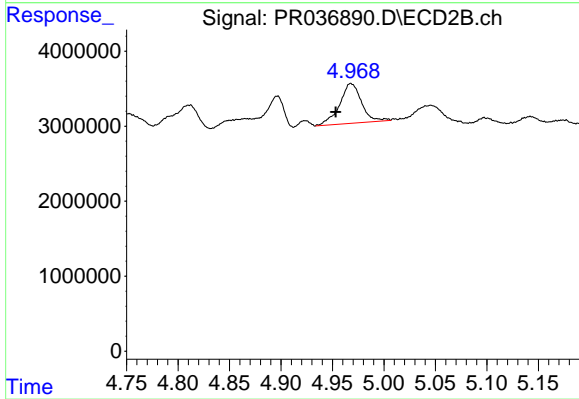
#14 AR-1232-4

R.T.: 4.811 min
 Delta R.T. : 0.025 min
 Response: 8294042
 Conc: 167.67 ng/ml



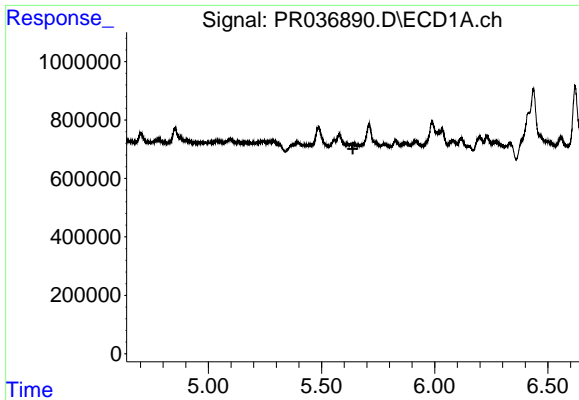
#15 AR-1232-5

R.T.: 0.000 min
 Exp R.T. : 5.824 min
 Response: 0
 Conc: N.D.



#15 AR-1232-5

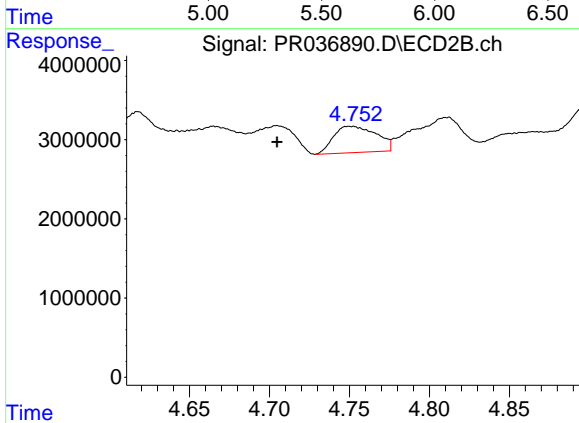
R.T.: 4.968 min
 Delta R.T. : 0.015 min
 Response: 7861468
 Conc: 137.17 ng/ml



#18 AR-1242-3

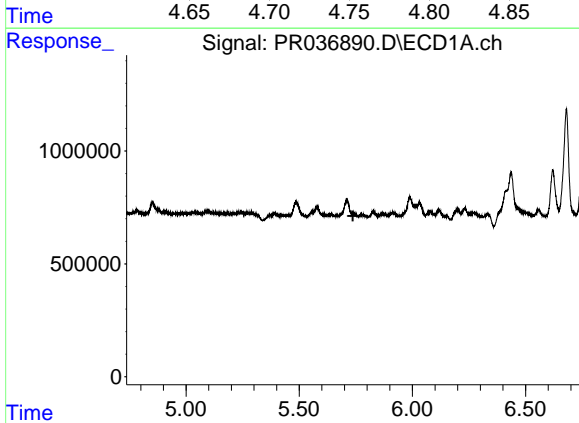
R.T.: 0.000 min
 Exp R.T.: 5.639 min
 Response: 0
 Conc: N.D.

Instrument :
 ECD_R
 ClientSampleId :
 SU-03-040219-B



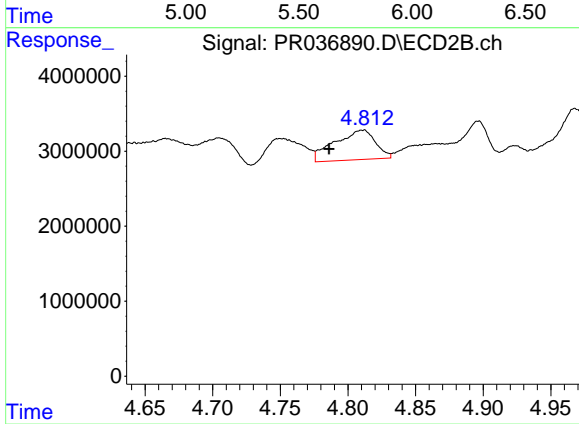
#18 AR-1242-3

R.T.: 4.750 min
 Delta R.T.: 0.045 min
 Response: 6185116
 Conc: 64.69 ng/ml



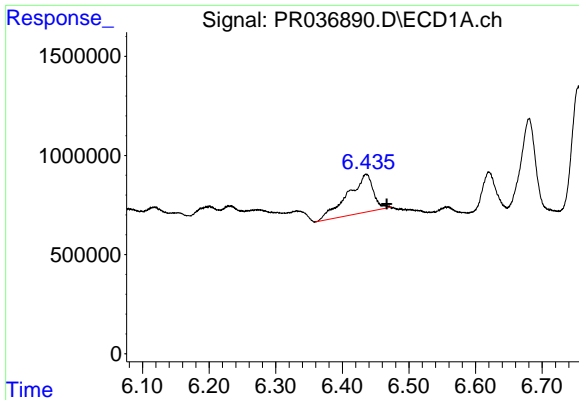
#19 AR-1242-4

R.T.: 0.000 min
 Exp R.T.: 5.737 min
 Response: 0
 Conc: N.D.



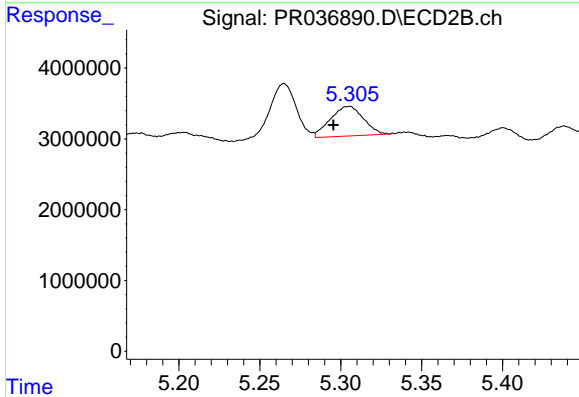
#19 AR-1242-4

R.T.: 4.811 min
 Delta R.T.: 0.025 min
 Response: 8294042
 Conc: 91.86 ng/ml

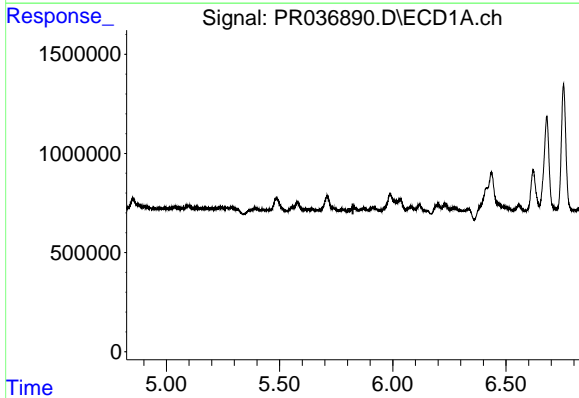


#20 AR-1242-5
 R.T.: 6.436 min
 Delta R.T.: -0.031 min
 Response: 5157861
 Conc: 167.86 ng/ml

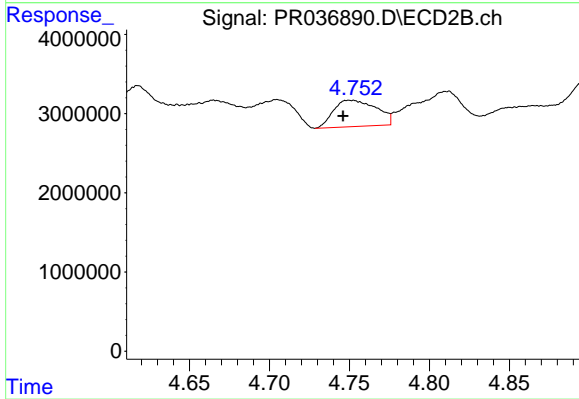
Instrument :
 ECD_R
ClientSampled :
 SU-03-040219-B



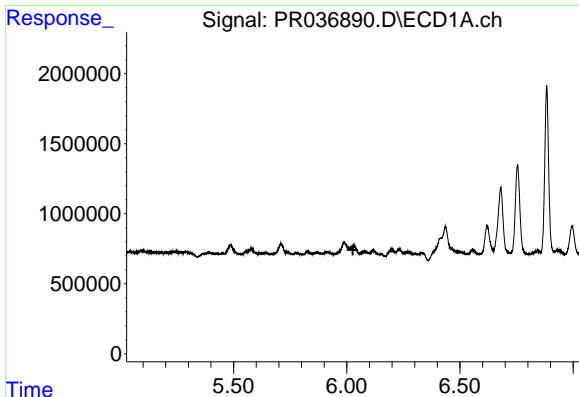
#20 AR-1242-5
 R.T.: 5.305 min
 Delta R.T.: 0.009 min
 Response: 5973874
 Conc: 43.27 ng/ml



#22 AR-1248-2
 R.T.: 0.000 min
 Exp R.T. : 5.824 min
 Response: 0
 Conc: N.D.



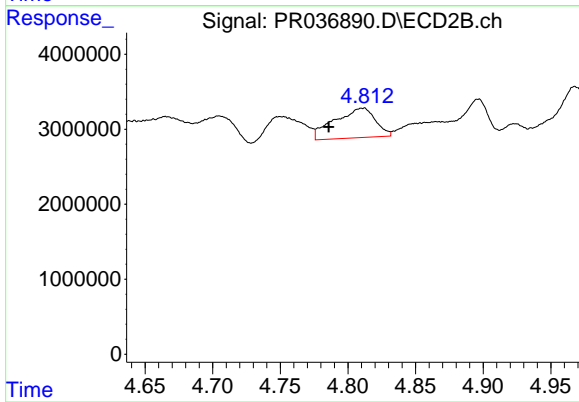
#22 AR-1248-2
 R.T.: 4.750 min
 Delta R.T.: 0.004 min
 Response: 6185116
 Conc: 45.80 ng/ml



#23 AR-1248-3

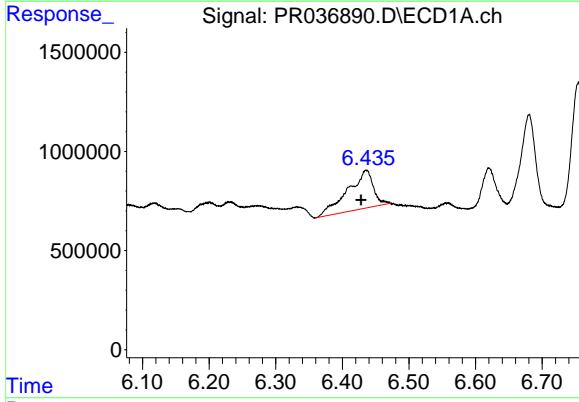
R.T.: 0.000 min
 Exp R.T.: 6.027 min
 Response: 0
 Conc: N.D.

Instrument :
 ECD_R
 ClientSampleId :
 SU-03-040219-B



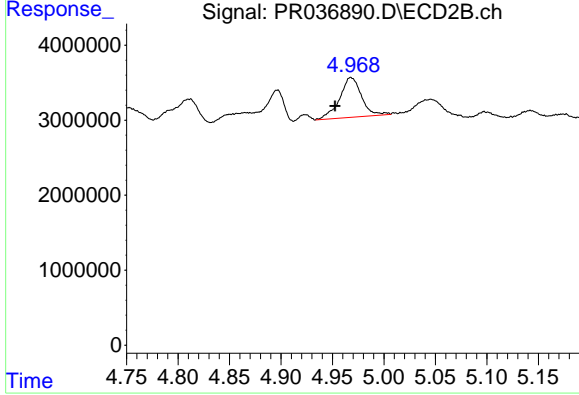
#23 AR-1248-3

R.T.: 4.811 min
 Delta R.T.: 0.025 min
 Response: 8294042
 Conc: 59.60 ng/ml



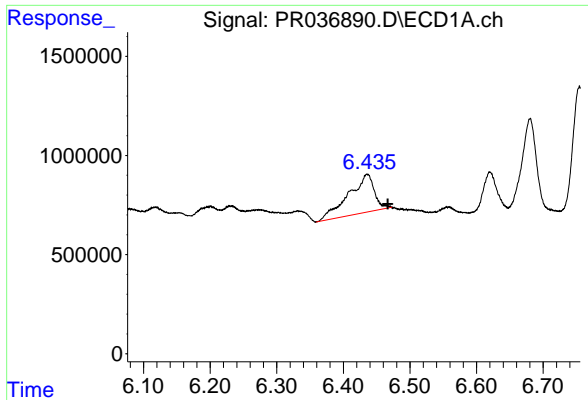
#24 AR-1248-4

R.T.: 6.436 min
 Delta R.T.: 0.008 min
 Response: 5157861
 Conc: 95.99 ng/ml



#24 AR-1248-4

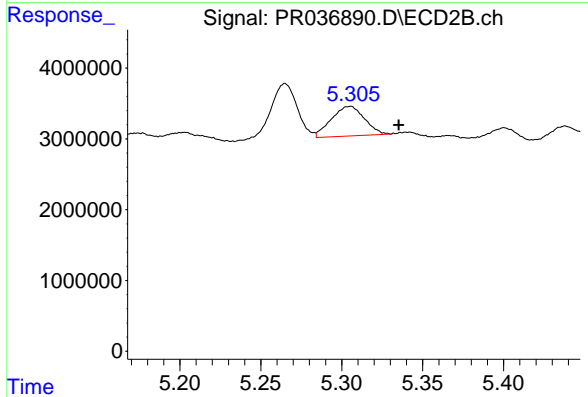
R.T.: 4.968 min
 Delta R.T.: 0.015 min
 Response: 7861468
 Conc: 44.58 ng/ml



#25 AR-1248-5

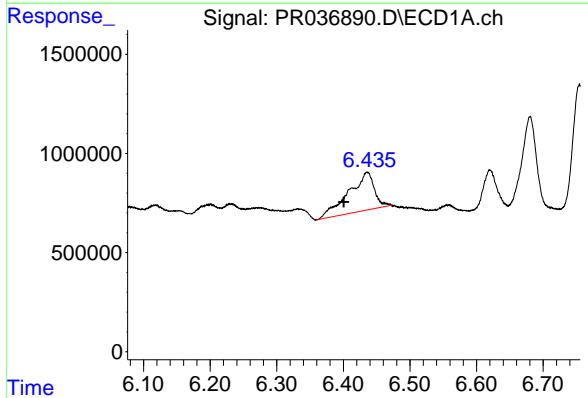
R.T.: 6.436 min
 Delta R.T.: -0.031 min
 Response: 5157861
 Conc: 99.53 ng/ml

Instrument :
 ECD_R
ClientSampleId :
 SU-03-040219-B



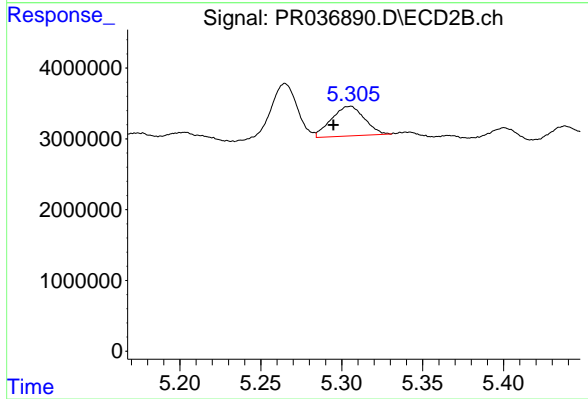
#25 AR-1248-5

R.T.: 5.305 min
 Delta R.T.: -0.030 min
 Response: 5973874
 Conc: 30.73 ng/ml



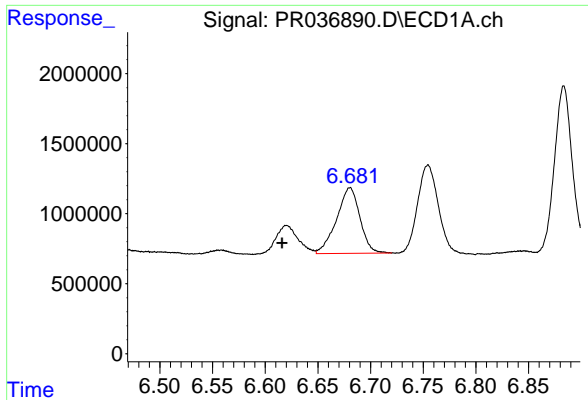
#26 AR-1254-1

R.T.: 6.436 min
 Delta R.T.: 0.036 min
 Response: 5157861
 Conc: 88.99 ng/ml



#26 AR-1254-1

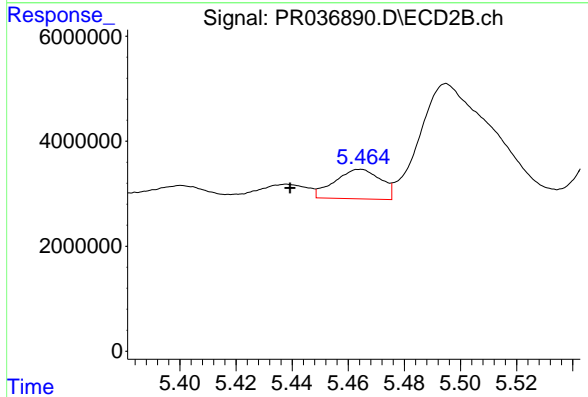
R.T.: 5.305 min
 Delta R.T.: 0.010 min
 Response: 5973874
 Conc: 18.16 ng/ml



#27 AR-1254-2

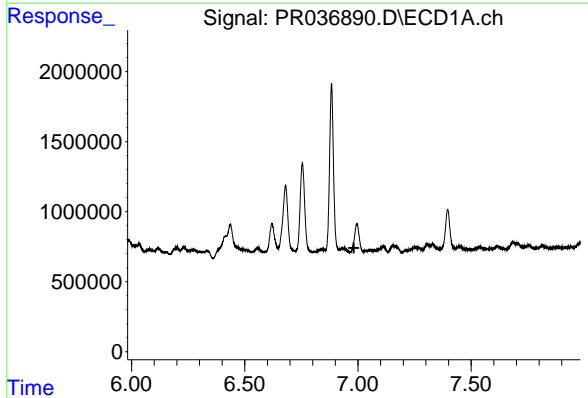
R.T.: 6.680 min
 Delta R.T.: 0.064 min
 Response: 7231782
 Conc: 77.44 ng/ml

Instrument :
 ECD_R
ClientSampled :
 SU-03-040219-B



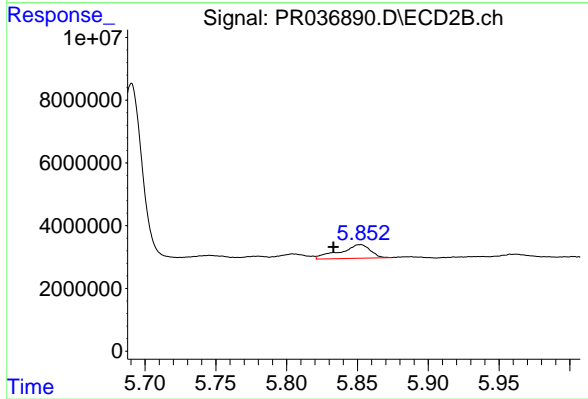
#27 AR-1254-2

R.T.: 5.464 min
 Delta R.T.: 0.025 min
 Response: 6395448
 Conc: 21.60 ng/ml



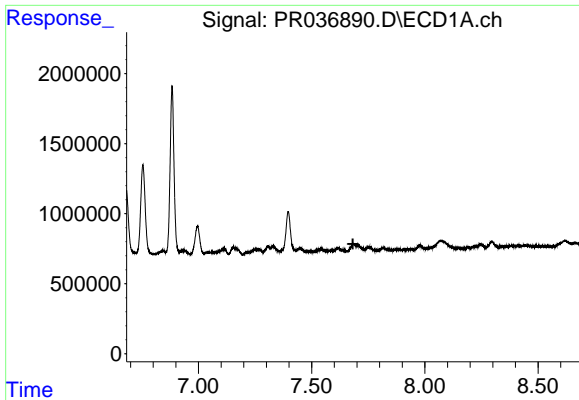
#28 AR-1254-3

R.T.: 0.000 min
 Exp R.T. : 6.982 min
 Response: 0
 Conc: N.D.



#28 AR-1254-3

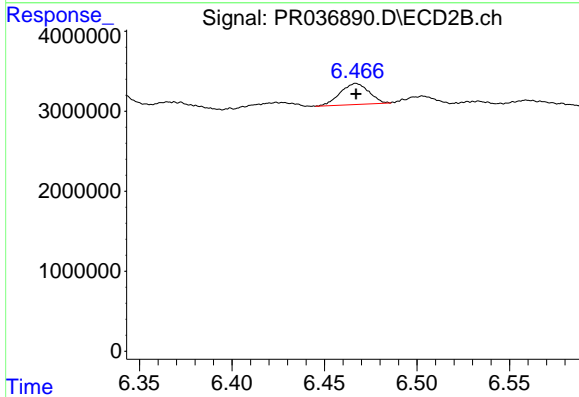
R.T.: 5.852 min
 Delta R.T.: 0.019 min
 Response: 6472027
 Conc: 12.72 ng/ml



#30 AR-1254-5

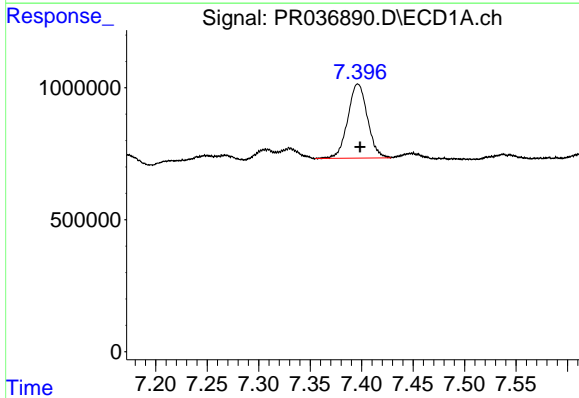
R.T.: 0.000 min
 Exp R.T.: 7.682 min
 Response: 0
 Conc: N.D.

Instrument :
 ECD_R
ClientSampleId :
 SU-03-040219-B



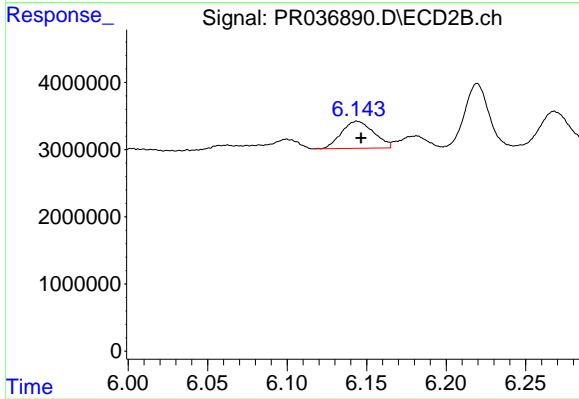
#30 AR-1254-5

R.T.: 6.467 min
 Delta R.T.: 0.000 min
 Response: 2837074
 Conc: 5.58 ng/ml



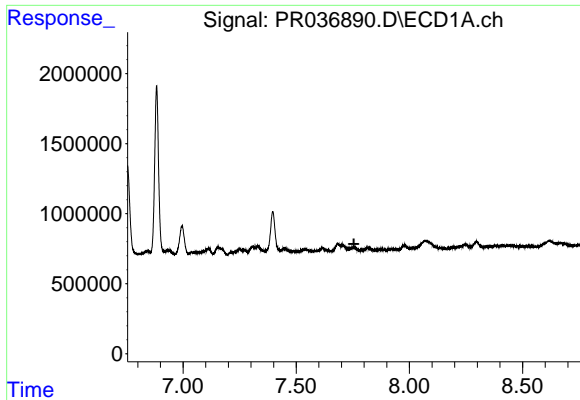
#32 AR-1260-2

R.T.: 7.396 min
 Delta R.T.: -0.002 min
 Response: 3721387
 Conc: 30.33 ng/ml



#32 AR-1260-2

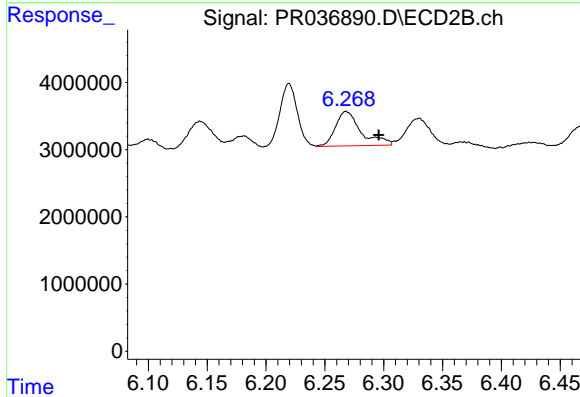
R.T.: 6.144 min
 Delta R.T.: -0.002 min
 Response: 5719312
 Conc: 8.74 ng/ml



#33 AR-1260-3

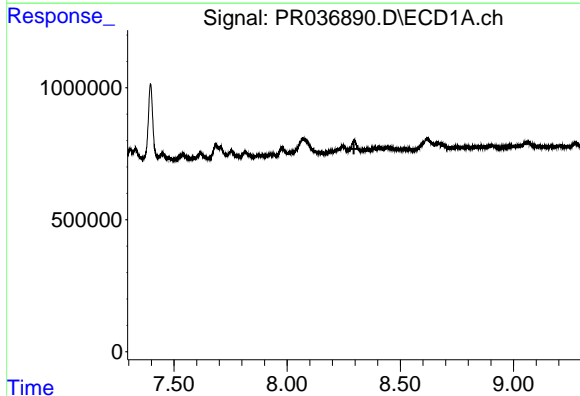
R.T.: 0.000 min
 Exp R.T. : 7.755 min
 Response: 0
 Conc: N.D.

Instrument :
 ECD_R
 ClientSampleId :
 SU-03-040219-B



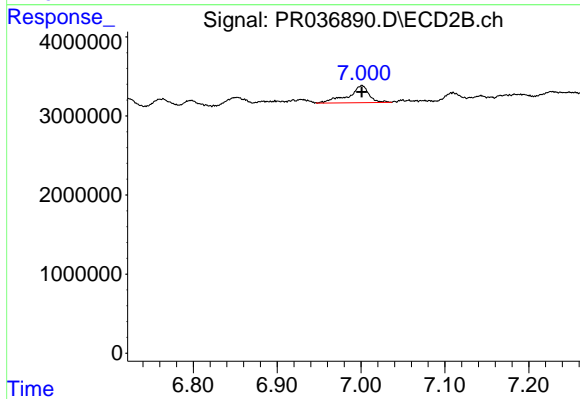
#33 AR-1260-3

R.T.: 6.268 min
 Delta R.T.: -0.028 min
 Response: 7749191
 Conc: 14.65 ng/ml



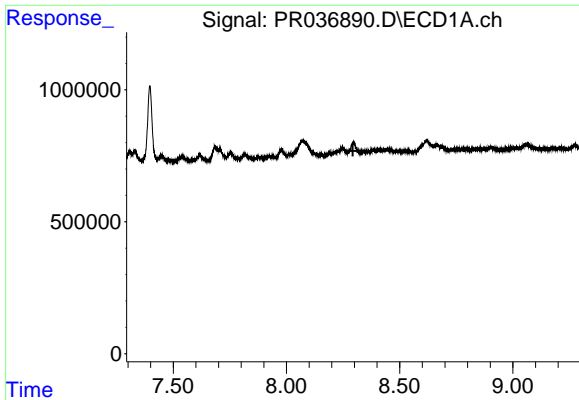
#35 AR-1260-5

R.T.: 0.000 min
 Exp R.T. : 8.295 min
 Response: 0
 Conc: N.D.



#35 AR-1260-5

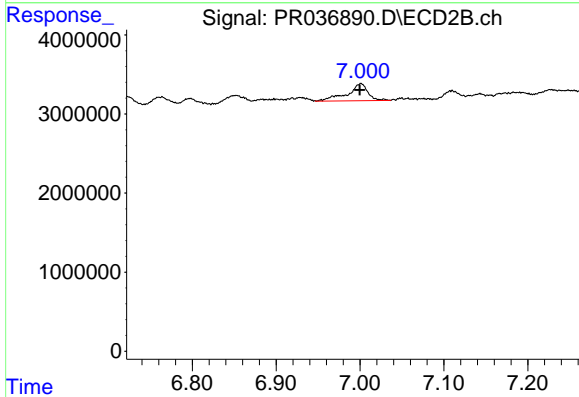
R.T.: 7.001 min
 Delta R.T.: 0.000 min
 Response: 3671939
 Conc: 2.76 ng/ml



#37 AR-1262-2

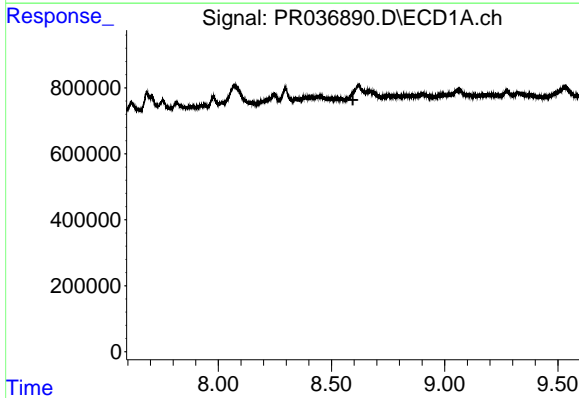
R.T.: 0.000 min
 Exp R.T. : 8.294 min
 Response: 0
 Conc: N.D.

Instrument :
 ECD_R
 ClientSampleId :
 SU-03-040219-B



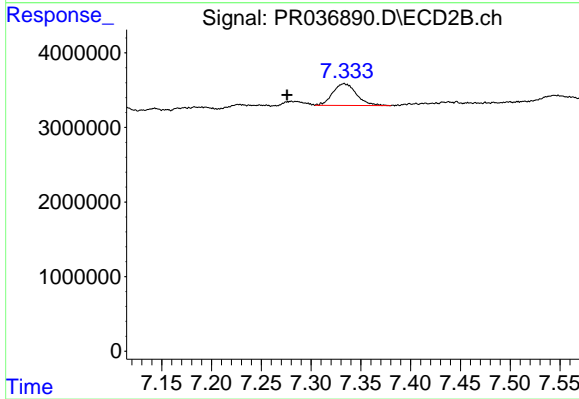
#37 AR-1262-2

R.T.: 7.001 min
 Delta R.T.: 0.002 min
 Response: 3671939
 Conc: 2.68 ng/ml



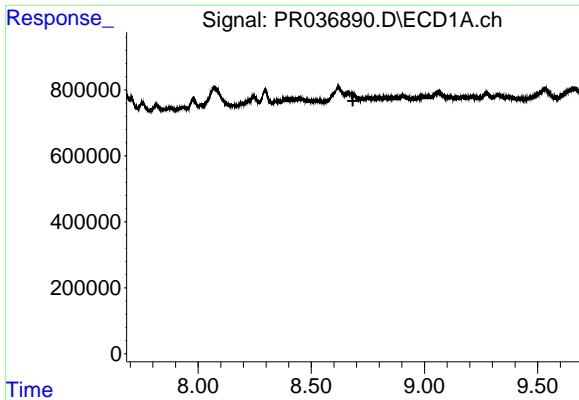
#38 AR-1262-3

R.T.: 0.000 min
 Exp R.T. : 8.595 min
 Response: 0
 Conc: N.D.



#38 AR-1262-3

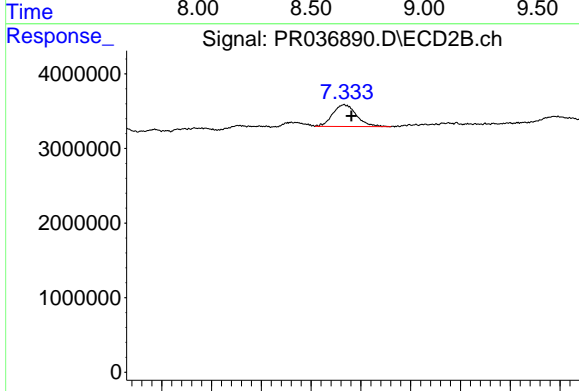
R.T.: 7.333 min
 Delta R.T.: 0.057 min
 Response: 4841109
 Conc: 8.87 ng/ml



#39 AR-1262-4

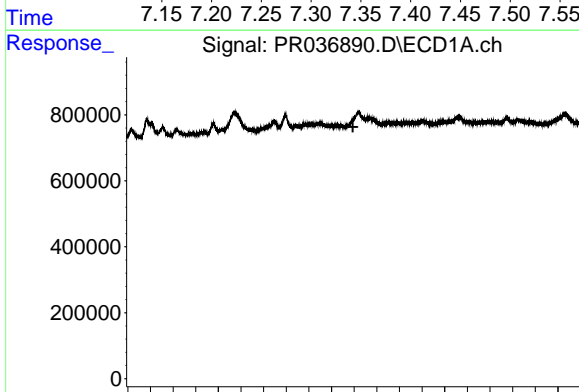
R.T.: 0.000 min
 Exp R.T.: 8.684 min
 Response: 0
 Conc: N.D.

Instrument :
 ECD_R
 ClientSampleId :
 SU-03-040219-B



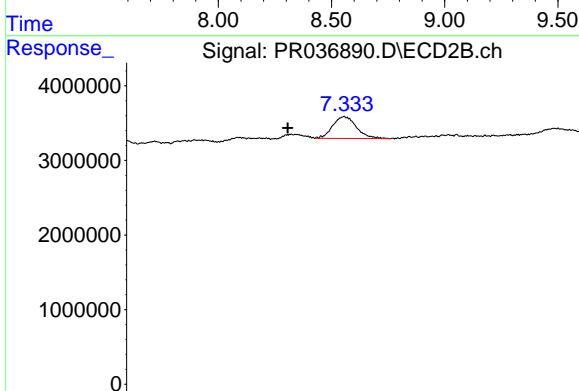
#39 AR-1262-4

R.T.: 7.333 min
 Delta R.T.: -0.007 min
 Response: 4841109
 Conc: 5.27 ng/ml



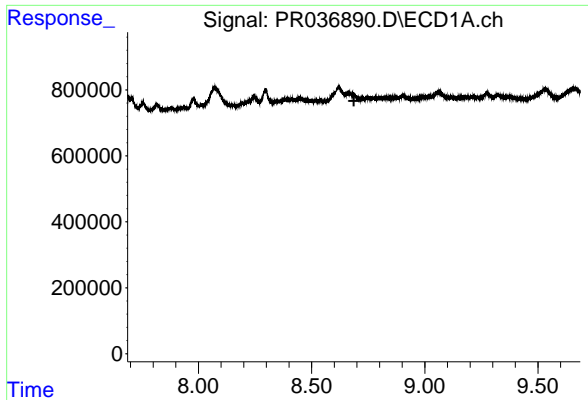
#41 AR-1268-1

R.T.: 0.000 min
 Exp R.T.: 8.595 min
 Response: 0
 Conc: N.D.



#41 AR-1268-1

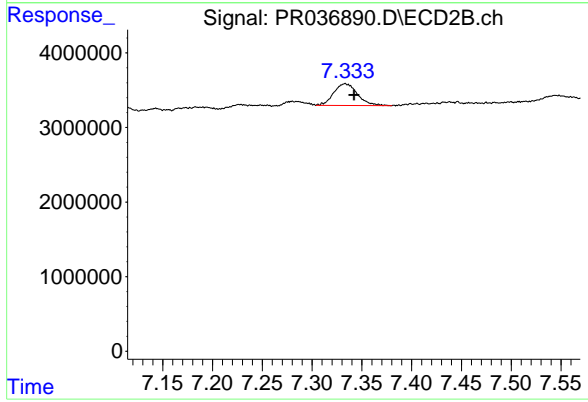
R.T.: 7.333 min
 Delta R.T.: 0.057 min
 Response: 4841109
 Conc: 3.27 ng/ml



#42 AR-1268-2

R.T.: 0.000 min
Exp R.T.: 8.687 min
Response: 0
Conc: N.D.

Instrument :
ECD_R
ClientSampled :
SU-03-040219-B



#42 AR-1268-2

R.T.: 7.333 min
Delta R.T.: -0.009 min
Response: 4841109
Conc: 3.86 ng/ml