

Data Path : Z:\pestpcbsrv\HPCHEM1\ECD_R\Data\PR040419\
 Data File : PR036912.D
 Signal(s) : Signal #1: ECD1A.ch Signal #2: ECD2B.ch
 Acq On : 04 Apr 2019 21:03
 Operator : SM\SJ
 Sample : K2242-03
 Misc :
 ALS Vial : 29 Sample Multiplier: 1

Instrument :
 ECD_R
 ClientSampleId :
 FIELD-BLANK

Integration File signal 1: autoint1.e
 Integration File signal 2: autoint2.e
 Quant Time: Apr 05 02:45:43 2019
 Quant Method : Z:\pestpcbsrv\HPCHEM1\ECD_R\Method\PR040219.M
 Quant Title : GC EXTRACTABLES
 QLast Update : Wed Apr 03 03:09:33 2019
 Response via : Initial Calibration
 Integrator: ChemStation

Volume Inj. : 2 µl
 Signal #1 Phase : ZB-MR1 Signal #2 Phase: ZB-MR2
 Signal #1 Info : 30Mx0.32mmx 0.50µ Signal #2 Info : 30M x 0.32mm x 0.25µm

Compound	RT#1	RT#2	Resp#1	Resp#2	ng/ml	ng/ml
----------	------	------	--------	--------	-------	-------

 System Monitoring Compounds

1) SA Tetrachlo...	4.397	3.470	32131956	117.0E6	20.169	19.975
2) SA Decachlor...	10.040	8.325	36090317	128.6E6	19.263	16.109

Target Compounds

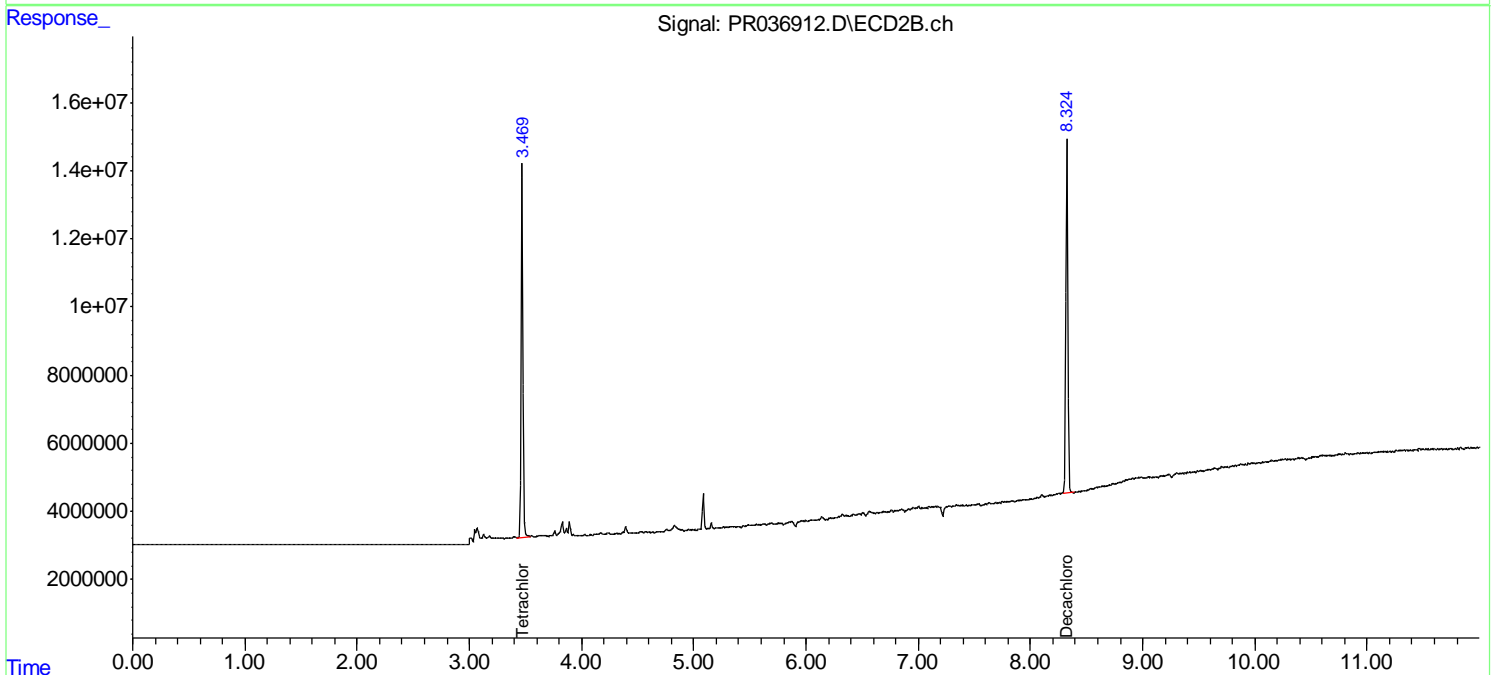
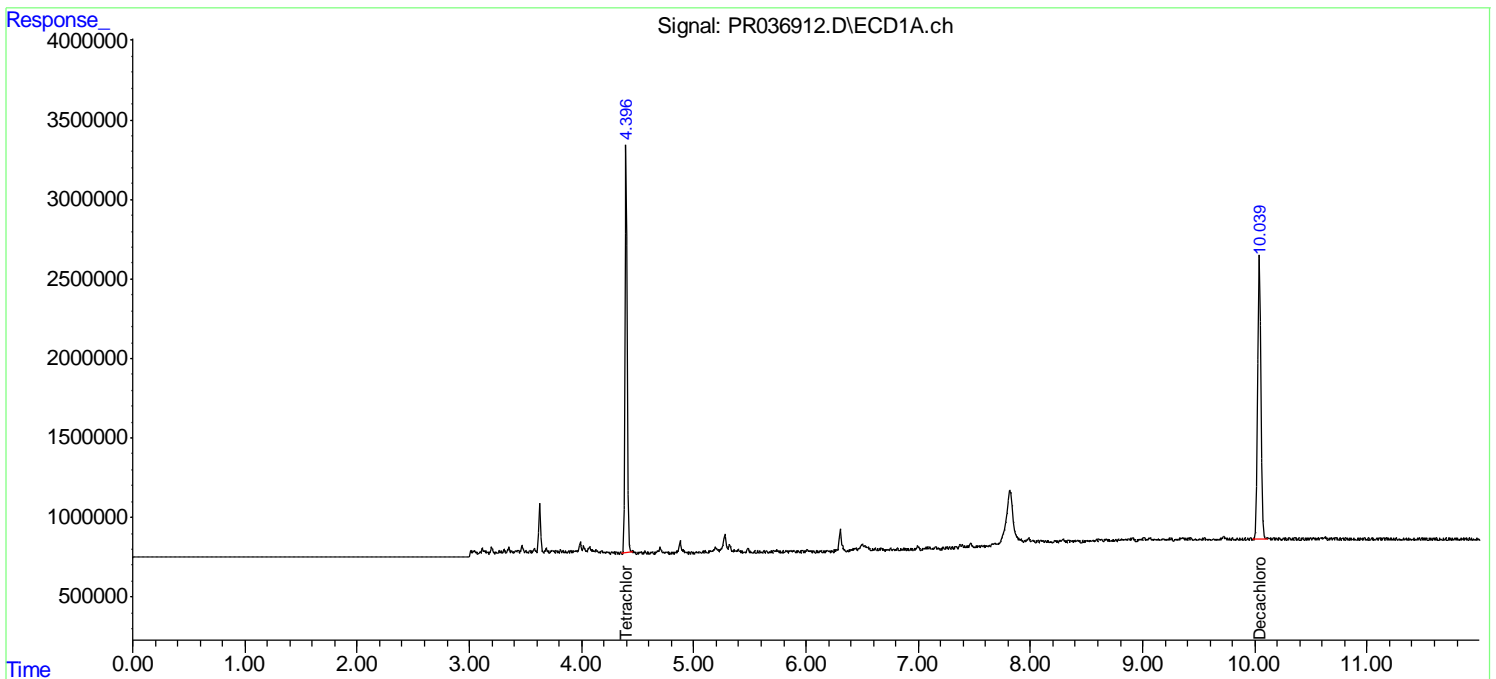
(f)=RT Delta > 1/2 Window (#)=Amounts differ by > 25% (m)=manual int.

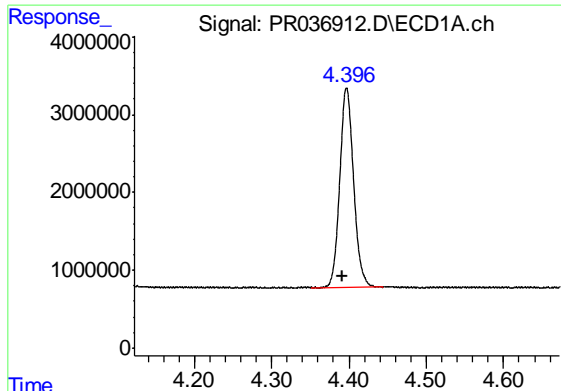
Data Path : Z:\pestpcbsrv\HPCHEM1\ECD_R\Data\PR040419\
 Data File : PR036912.D
 Signal(s) : Signal #1: ECD1A.ch Signal #2: ECD2B.ch
 Acq On : 04 Apr 2019 21:03
 Operator : SM\SJ
 Sample : K2242-03
 Misc :
 ALS Vial : 29 Sample Multiplier: 1

Instrument :
 ECD_R
ClientSampleId :
 FIELD-BLANK

Integration File signal 1: autoint1.e
 Integration File signal 2: autoint2.e
 Quant Time: Apr 05 02:45:43 2019
 Quant Method : Z:\pestpcbsrv\HPCHEM1\ECD_R\Method\PR040219.M
 Quant Title : GC EXTRACTABLES
 QLast Update : Wed Apr 03 03:09:33 2019
 Response via : Initial Calibration
 Integrator: ChemStation

Volume Inj. : 2 µl
 Signal #1 Phase : ZB-MR1 Signal #2 Phase: ZB-MR2
 Signal #1 Info : 30Mx0.32mmx 0.50µ Signal #2 Info : 30M x 0.32mm x 0.25µm

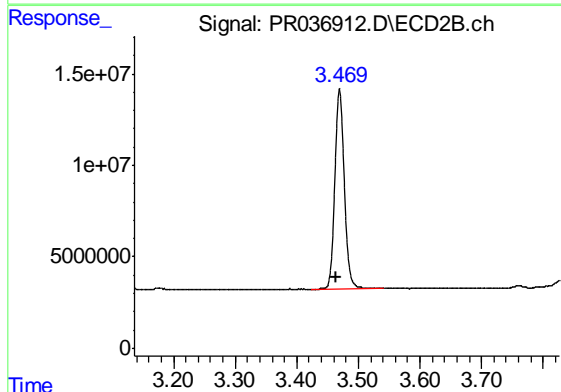




#1 Tetrachloro-m-xylene

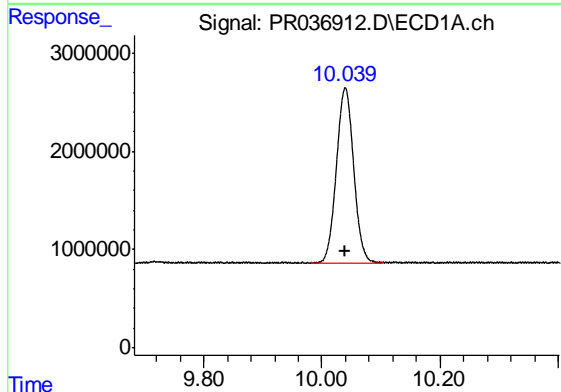
R.T.: 4.397 min
Delta R.T.: 0.005 min
Response: 32131956
Conc: 20.17 ng/ml

Instrument :
ECD_R
ClientSampleId :
FIELD-BLANK



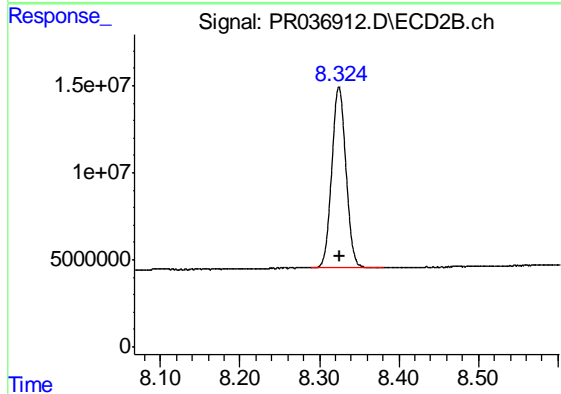
#1 Tetrachloro-m-xylene

R.T.: 3.470 min
Delta R.T.: 0.006 min
Response: 117010057
Conc: 19.97 ng/ml



#2 Decachlorobiphenyl

R.T.: 10.040 min
Delta R.T.: 0.001 min
Response: 36090317
Conc: 19.26 ng/ml



#2 Decachlorobiphenyl

R.T.: 8.325 min
Delta R.T.: -0.001 min
Response: 128588418
Conc: 16.11 ng/ml