

Data Path : Z:\pestpcbsrv\HPCHEM1\ECD\_R\Data\PR041020\  
 Data File : PR045180.D  
 Signal(s) : Signal #1: ECD1A.ch Signal #2: ECD2B.ch  
 Acq On : 11 Apr 2020 00:42  
 Operator : AJ\MA  
 Sample : AIBLK05  
 Misc :  
 ALS Vial : 2 Sample Multiplier: 1

Instrument :  
 ECD\_R  
 ClientSampled :

Integration File signal 1: autoint1.e  
 Integration File signal 2: autoint2.e  
 Quant Time: Apr 11 08:22:02 2020  
 Quant Method : Z:\pestpcbsrv\HPCHEM1\ECD\_R\Method\PR041020CLP.M  
 Quant Title : GC EXTRACTABLES  
 QLast Update : Sat Apr 11 08:18:58 2020  
 Response via : Initial Calibration  
 Integrator: ChemStation

Volume Inj. : 1 µl  
 Signal #1 Phase : ZB MR1 Signal #2 Phase: ZB MR2  
 Signal #1 Info : 30Mx0.32mmx 0.5µm Signal #2 Info : 30M x 0.32mm x 0.25µm

Compound	RT#1	RT#2	Resp#1	Resp#2	ng/ml	ng/ml
System Monitoring Compounds						
1) SA Tetrachlo...	4.667	3.934	37634940	372.8E6	20.783	20.298
2) SA Decachlor...	10.535	8.999	61659879	471.6E6	41.938	40.200
Target Compounds						
3) L1 AR-1016-1	5.839	5.058f	33898	708481	0.509	1.602 #
4) L1 AR-1016-2	5.839	5.058	33898	708481	0.366	1.146 #
5) L1 AR-1016-3	0.000	5.255f	0	2787186	N.D.	8.101 #
6) L1 AR-1016-4	0.000	5.255	0	2787186	N.D.	10.514 #
7) L1 AR-1016-5	0.000	5.457	0	414145	N.D.	1.114 #
8) L2 AR-1221-1	4.905	4.136	12786	447792	0.668	2.360 #
9) L2 AR-1221-2	4.977	4.238	447946	5546736	35.278	42.421
10) L2 AR-1221-3	4.977f	4.308	447946	147537	10.153	0.353 #
11) L3 AR-1232-1	4.977f	4.308	447946	147537	13.346	0.471 #
12) L3 AR-1232-2	0.000	5.058	0	708481	N.D.	3.031 #
13) L3 AR-1232-3	5.839	5.255f	33898	2787186	0.973	22.208 #
14) L3 AR-1232-4	0.000	5.333	0	7399874	N.D.	68.496 #
15) L3 AR-1232-5	0.000	5.457	0	414145	N.D.	3.356 #
16) L4 AR-1242-1	5.839	5.058f	33898	708481	0.749	2.425 #
17) L4 AR-1242-2	5.839	5.058	33898	708481	0.540	1.744 #
18) L4 AR-1242-3	0.000	5.255f	0	2787186	N.D.	12.231 #
19) L4 AR-1242-4	0.000	5.333	0	7399874	N.D.	34.160 #
20) L4 AR-1242-5	6.698f	5.849	403236	2062076	11.644	6.557 #
21) L5 AR-1248-1	5.839	5.058f	33898	708481	1.027	3.288 #
22) L5 AR-1248-2	0.000	5.255	0	2787186	N.D.	10.013 #
23) L5 AR-1248-3	0.000	5.333	0	7399874	N.D.	25.522 #
24) L5 AR-1248-4	6.698	5.457	403236	414145	6.947	1.106 #
25) L5 AR-1248-5	6.698f	5.884	403236	523311	7.485	1.318 #
26) L6 AR-1254-1	6.698	5.849	403236	2062076	6.625	3.191 #
27) L6 AR-1254-2	0.000	5.974	0	1155693	N.D.	2.041 #
28) L6 AR-1254-3	0.000	6.376	0	1640605	N.D.	1.748 #
29) L6 AR-1254-4	7.534	6.594	192820	260688	2.437	0.378 #
30) L6 AR-1254-5	0.000	7.039	0	1412742	N.D.	1.622 #
31) L7 AR-1260-1	0.000	6.502	0	133576	N.D.	0.188 #
32) L7 AR-1260-2	0.000	6.707	0	823719	N.D.	0.795 #
33) L7 AR-1260-3	0.000	6.882	0	1072334	N.D.	1.264 #
34) L7 AR-1260-4	0.000	7.324	0	1195857	N.D.	1.621 #
35) L7 AR-1260-5	0.000	7.569	0	364327	N.D.	0.170 #
36) L8 AR-1262-1	0.000	7.039	0	1412742	N.D.	2.993 #
37) L8 AR-1262-2	0.000	7.569	0	364327	N.D.	0.178 #
38) L8 AR-1262-3	8.953	7.843	44923	4109239	0.349	4.970 #
39) L8 AR-1262-4	0.000	7.907	0	519243	N.D.	0.383 #
40) L8 AR-1262-5	0.000	8.438	0	1300899	N.D.	2.041 #
41) L9 AR-1268-1	8.953	7.843	44923	4109239	0.189	1.663 #

Data Path : Z:\pestpcbsrv\HPCHEM1\ECD\_R\Data\PR041020\  
 Data File : PR045180.D  
 Signal(s) : Signal #1: ECD1A.ch Signal #2: ECD2B.ch  
 Acq On : 11 Apr 2020 00:42  
 Operator : AJ\MA  
 Sample : AIBLK05  
 Misc :  
 ALS Vial : 2 Sample Multiplier: 1

Instrument :  
 ECD\_R  
 ClientSampleId :

Integration File signal 1: autoint1.e  
 Integration File signal 2: autoint2.e  
 Quant Time: Apr 11 08:22:02 2020  
 Quant Method : Z:\pestpcbsrv\HPCHEM1\ECD\_R\Method\PR041020CLP.M  
 Quant Title : GC EXTRACTABLES  
 QLast Update : Sat Apr 11 08:18:58 2020  
 Response via : Initial Calibration  
 Integrator: ChemStation

Volume Inj. : 1 µl  
 Signal #1 Phase : ZB MR1 Signal #2 Phase: ZB MR2  
 Signal #1 Info : 30Mx0.32mmx 0.5µm Signal #2 Info : 30M x 0.32mm x 0.25µm

	Compound	RT#1	RT#2	Resp#1	Resp#2	ng/ml	ng/ml
42)	L9 AR-1268-2	0.000	7.907	0	519243	N.D.	0.248 #
43)	L9 AR-1268-3	9.289	8.115	395656	3465716	2.112	1.953
44)	L9 AR-1268-4	0.000	8.438	0	1300899	N.D.	1.791 #
45)	L9 AR-1268-5	10.180	8.729	543600	3080403	0.908	0.603 #

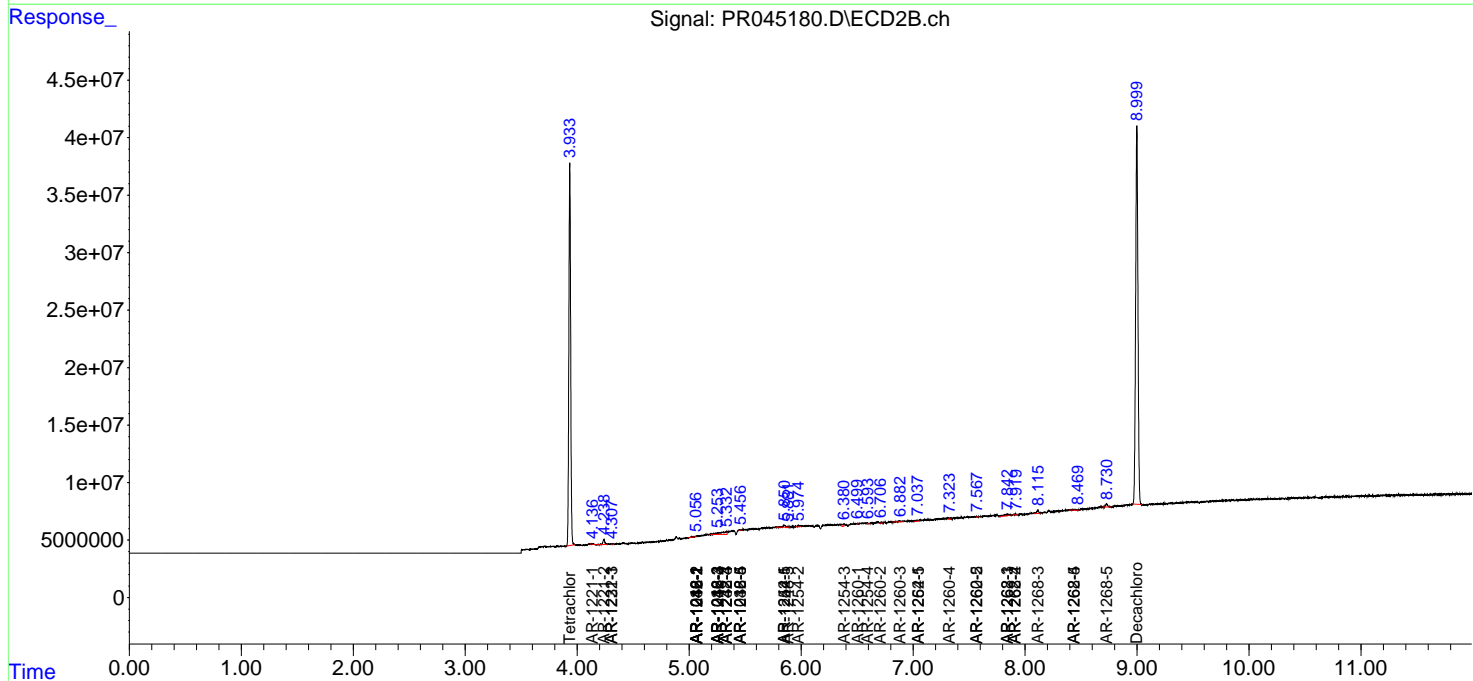
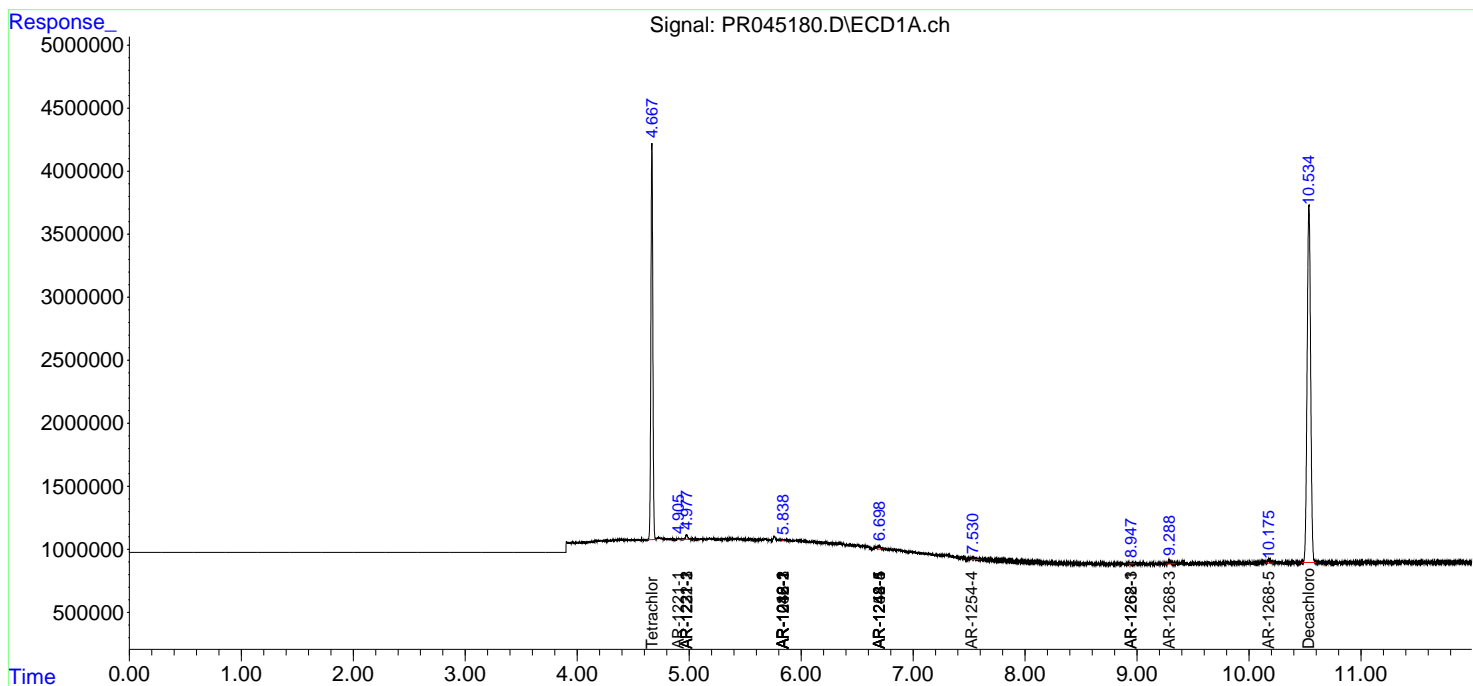
(f)=RT Delta > 1/2 Window (#)=Amounts differ by > 25% (m)=manual int.

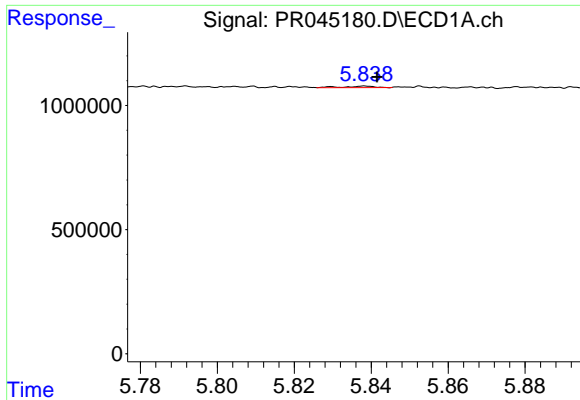
Data Path : Z:\pestpcbsrv\HPCHEM1\ECD\_R\Data\PR041020\  
 Data File : PR045180.D  
 Signal(s) : Signal #1: ECD1A.ch Signal #2: ECD2B.ch  
 Acq On : 11 Apr 2020 00:42  
 Operator : AJ\MA  
 Sample : AIBLK05  
 Misc :  
 ALS Vial : 2 Sample Multiplier: 1

Instrument :  
 ECD\_R  
 ClientSampled :

Integration File signal 1: autoint1.e  
 Integration File signal 2: autoint2.e  
 Quant Time: Apr 11 08:22:02 2020  
 Quant Method : Z:\pestpcbsrv\HPCHEM1\ECD\_R\Method\PR041020CLP.M  
 Quant Title : GC EXTRACTABLES  
 QLast Update : Sat Apr 11 08:18:58 2020  
 Response via : Initial Calibration  
 Integrator: ChemStation

Volume Inj. : 1 µl  
 Signal #1 Phase : ZB MR1 Signal #2 Phase: ZB MR2  
 Signal #1 Info : 30Mx0.32mmx 0.5µm Signal #2 Info : 30M x 0.32mm x 0.25µm

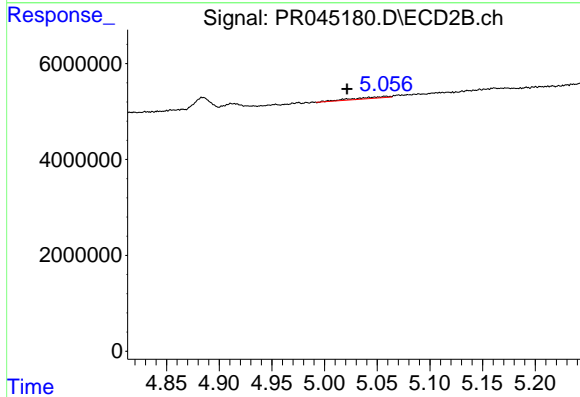




#3 AR-1016-1

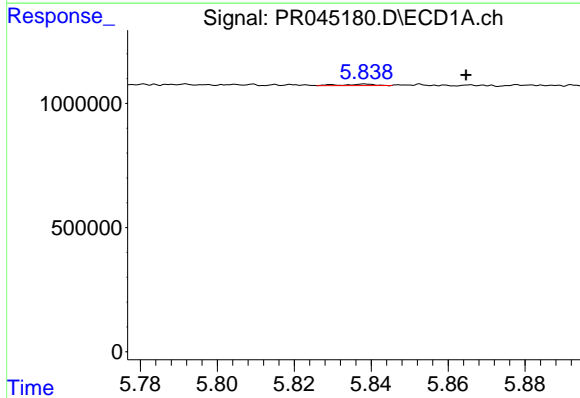
R.T.: 5.839 min  
 Delta R.T.: -0.003 min  
 Response: 33898  
 Conc: 0.51 ng/ml

Instrument :  
 ECD\_R  
 ClientSampleId :



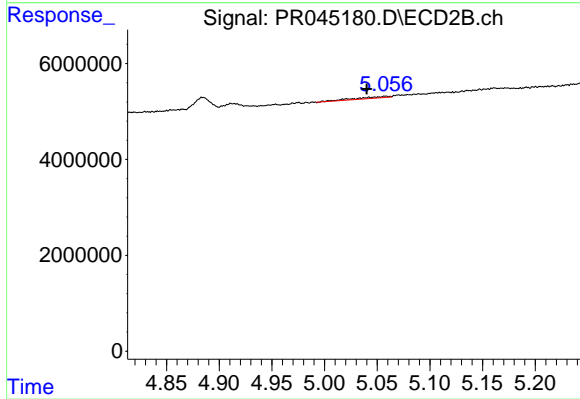
#3 AR-1016-1

R.T.: 5.058 min  
 Delta R.T.: 0.036 min  
 Response: 708481  
 Conc: 1.60 ng/ml



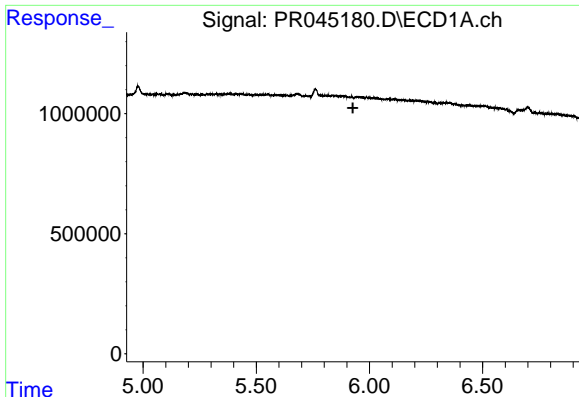
#4 AR-1016-2

R.T.: 5.839 min  
 Delta R.T.: -0.026 min  
 Response: 33898  
 Conc: 0.37 ng/ml



#4 AR-1016-2

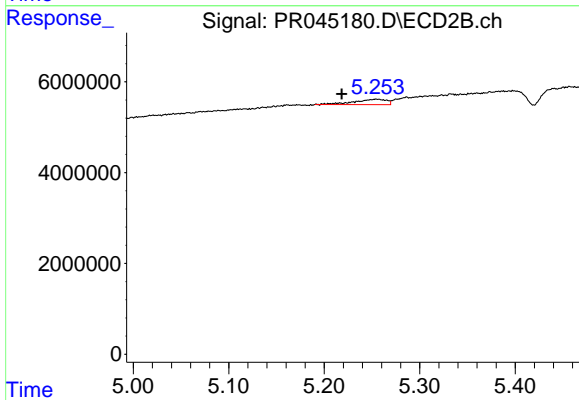
R.T.: 5.058 min  
 Delta R.T.: 0.018 min  
 Response: 708481  
 Conc: 1.15 ng/ml



#5 AR-1016-3

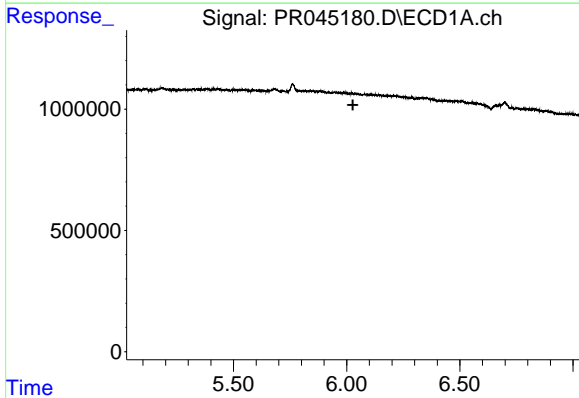
R.T.: 0.000 min  
 Exp R.T. : 5.927 min  
 Response: 0  
 Conc: N.D.

Instrument :  
 ECD\_R  
 ClientSampleId :



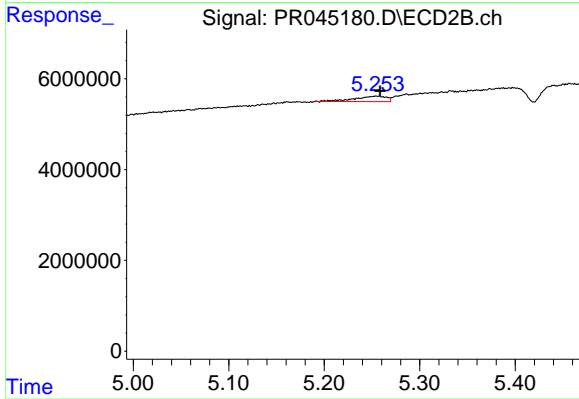
#5 AR-1016-3

R.T.: 5.255 min  
 Delta R.T.: 0.036 min  
 Response: 2787186  
 Conc: 8.10 ng/ml



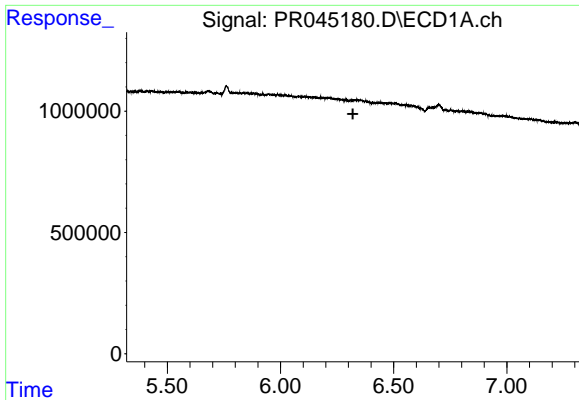
#6 AR-1016-4

R.T.: 0.000 min  
 Exp R.T. : 6.027 min  
 Response: 0  
 Conc: N.D.



#6 AR-1016-4

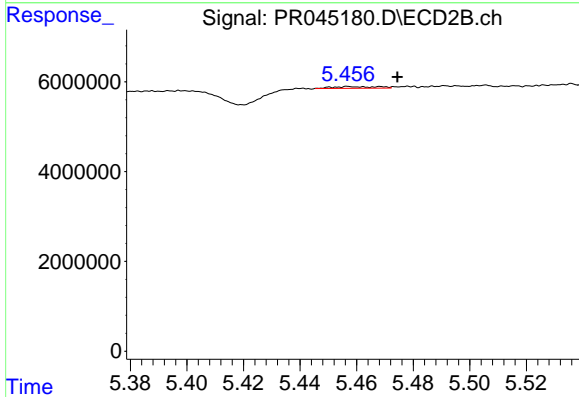
R.T.: 5.255 min  
 Delta R.T.: -0.004 min  
 Response: 2787186  
 Conc: 10.51 ng/ml



#7 AR-1016-5

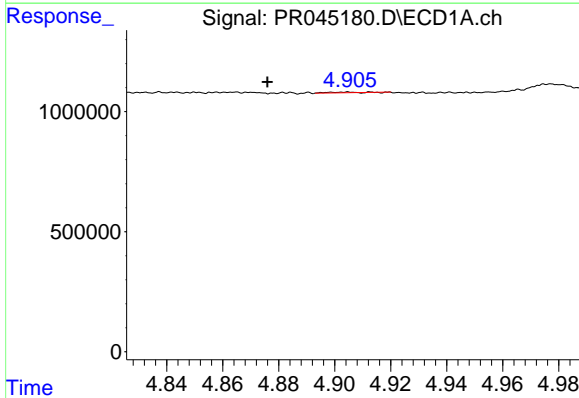
R.T.: 0.000 min  
 Exp R.T.: 6.320 min  
 Response: 0  
 Conc: N.D.

Instrument :  
 ECD\_R  
 ClientSampled :



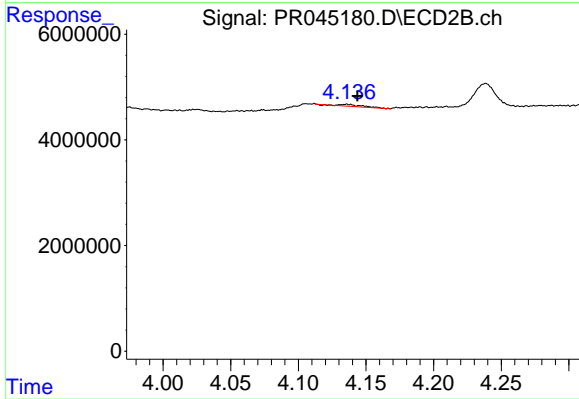
#7 AR-1016-5

R.T.: 5.457 min  
 Delta R.T.: -0.017 min  
 Response: 414145  
 Conc: 1.11 ng/ml



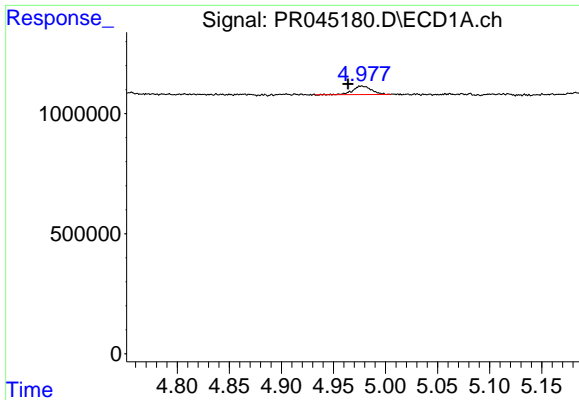
#8 AR-1221-1

R.T.: 4.905 min  
 Delta R.T.: 0.029 min  
 Response: 12786  
 Conc: 0.67 ng/ml



#8 AR-1221-1

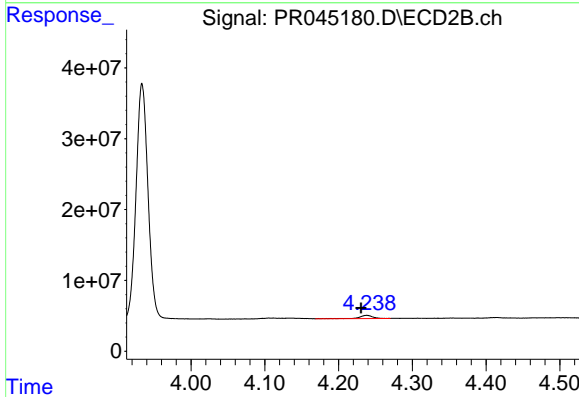
R.T.: 4.136 min  
 Delta R.T.: -0.008 min  
 Response: 447792  
 Conc: 2.36 ng/ml



#9 AR-1221-2

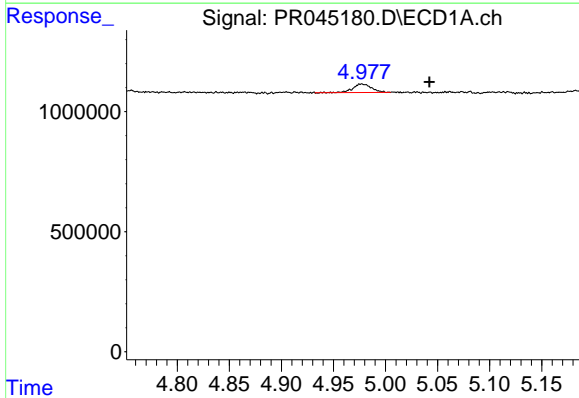
R.T.: 4.977 min  
 Delta R.T.: 0.013 min  
 Response: 447946  
 Conc: 35.28 ng/ml

Instrument :  
 ECD\_R  
 ClientSampled :



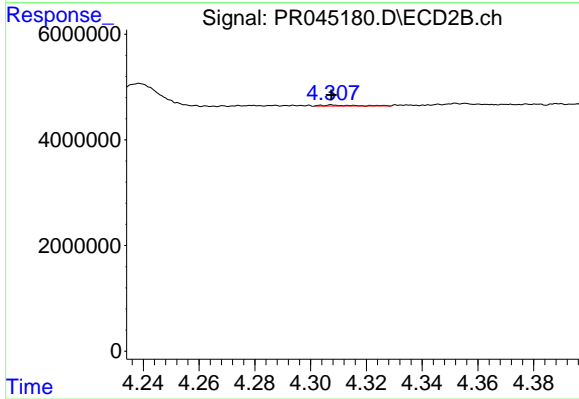
#9 AR-1221-2

R.T.: 4.238 min  
 Delta R.T.: 0.008 min  
 Response: 5546736  
 Conc: 42.42 ng/ml



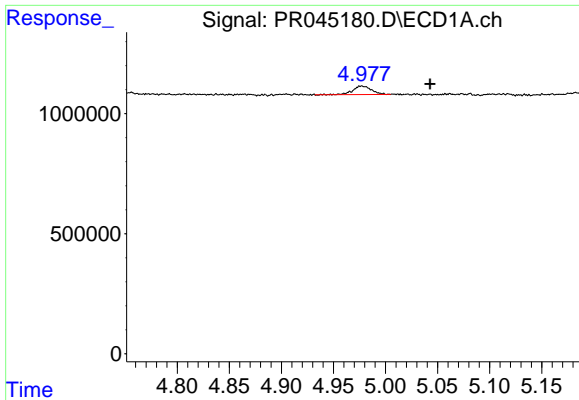
#10 AR-1221-3

R.T.: 4.977 min  
 Delta R.T.: -0.065 min  
 Response: 447946  
 Conc: 10.15 ng/ml



#10 AR-1221-3

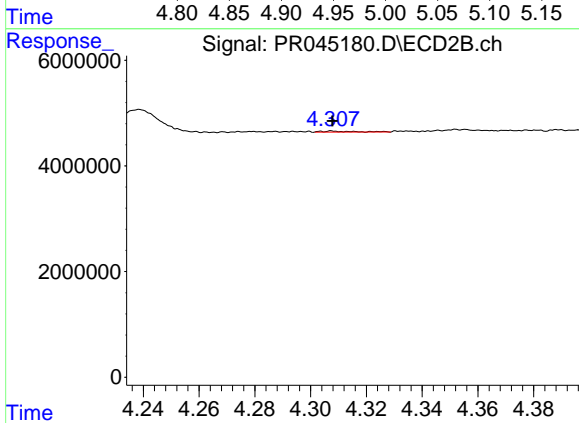
R.T.: 4.308 min  
 Delta R.T.: 0.000 min  
 Response: 147537  
 Conc: 0.35 ng/ml



#11 AR-1232-1

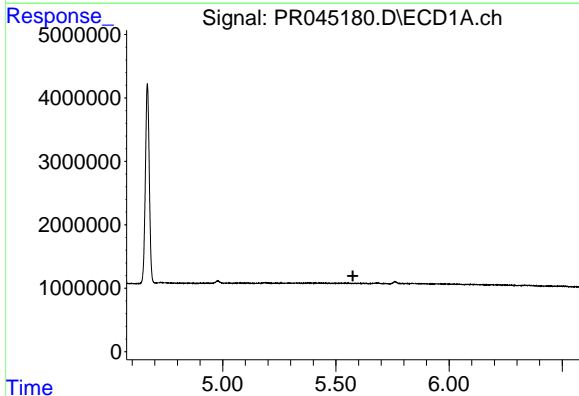
R.T.: 4.977 min  
 Delta R.T.: -0.066 min  
 Response: 447946  
 Conc: 13.35 ng/ml

Instrument :  
 ECD\_R  
 ClientSampleId :



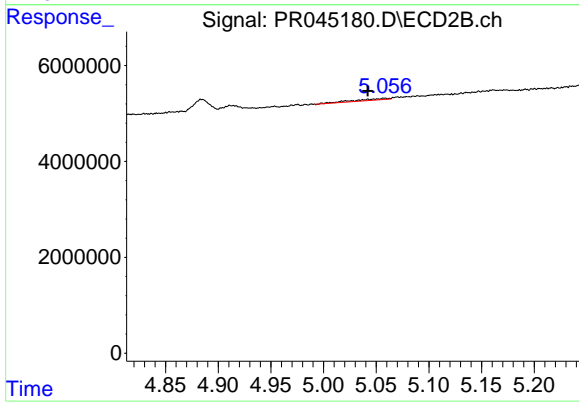
#11 AR-1232-1

R.T.: 4.308 min  
 Delta R.T.: 0.000 min  
 Response: 147537  
 Conc: 0.47 ng/ml



#12 AR-1232-2

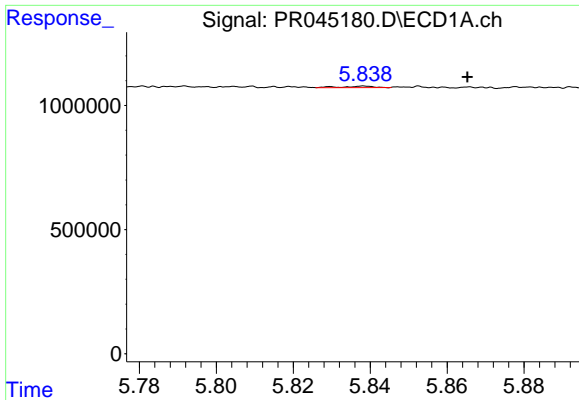
R.T.: 0.000 min  
 Exp R.T. : 5.575 min  
 Response: 0  
 Conc: N.D.



#12 AR-1232-2

R.T.: 5.058 min  
 Delta R.T.: 0.016 min  
 Response: 708481  
 Conc: 3.03 ng/ml

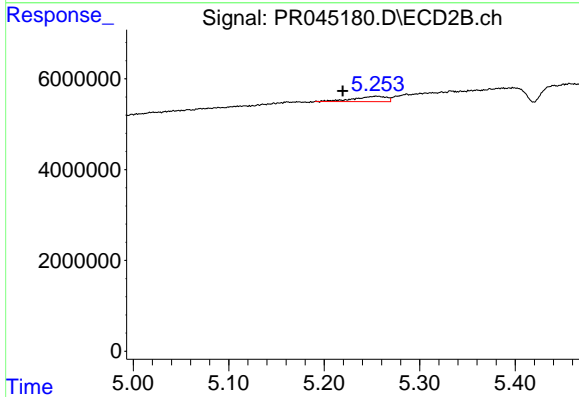




#13 AR-1232-3

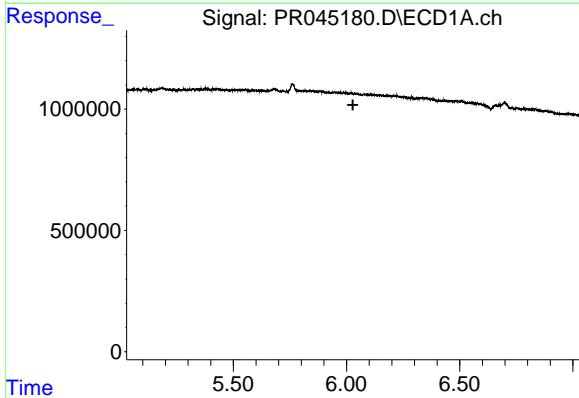
R.T.: 5.839 min  
 Delta R.T.: -0.027 min  
 Response: 33898  
 Conc: 0.97 ng/ml

Instrument :  
 ECD\_R  
 ClientSampleId :



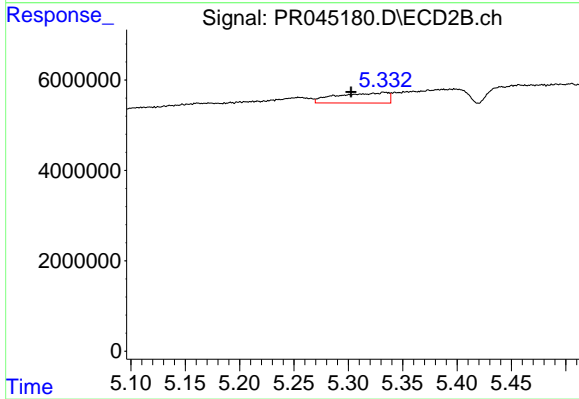
#13 AR-1232-3

R.T.: 5.255 min  
 Delta R.T.: 0.035 min  
 Response: 2787186  
 Conc: 22.21 ng/ml



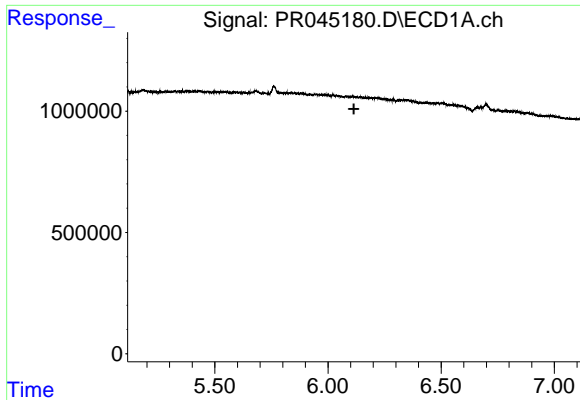
#14 AR-1232-4

R.T.: 0.000 min  
 Exp R.T. : 6.028 min  
 Response: 0  
 Conc: N.D.



#14 AR-1232-4

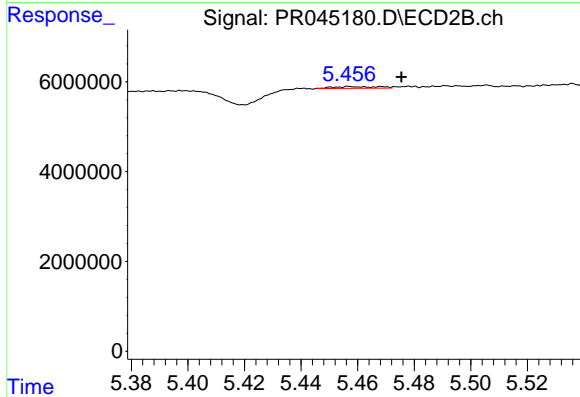
R.T.: 5.333 min  
 Delta R.T.: 0.030 min  
 Response: 7399874  
 Conc: 68.50 ng/ml



#15 AR-1232-5

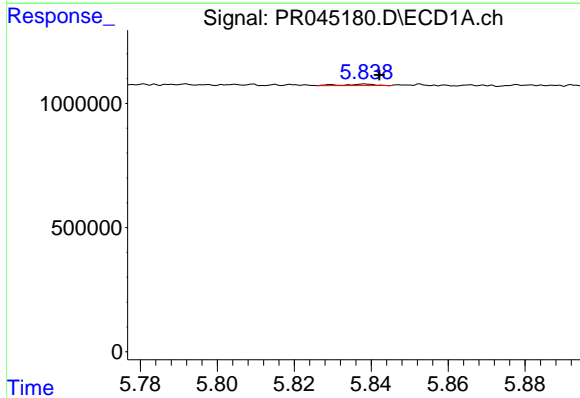
R.T.: 0.000 min  
 Exp R.T.: 6.115 min  
 Response: 0  
 Conc: N.D.

Instrument :  
 ECD\_R  
 ClientSampleId :



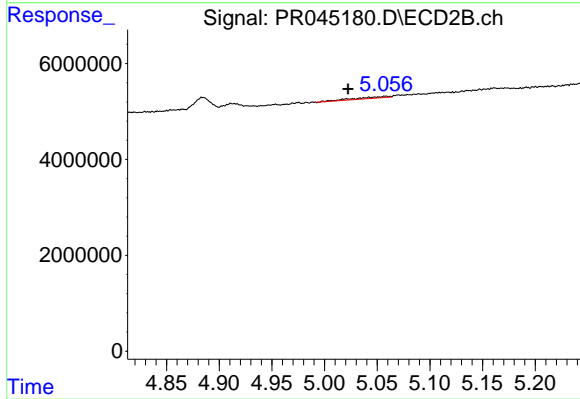
#15 AR-1232-5

R.T.: 5.457 min  
 Delta R.T.: -0.018 min  
 Response: 414145  
 Conc: 3.36 ng/ml



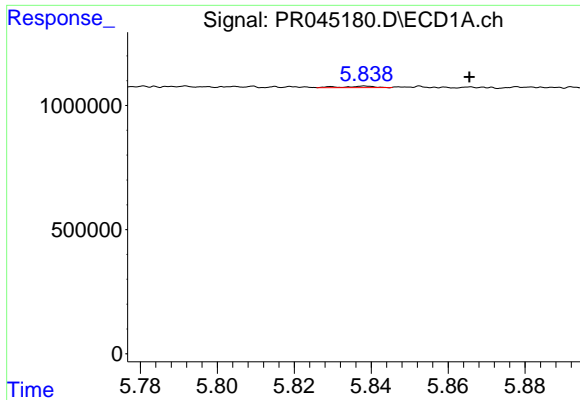
#16 AR-1242-1

R.T.: 5.839 min  
 Delta R.T.: -0.004 min  
 Response: 33898  
 Conc: 0.75 ng/ml



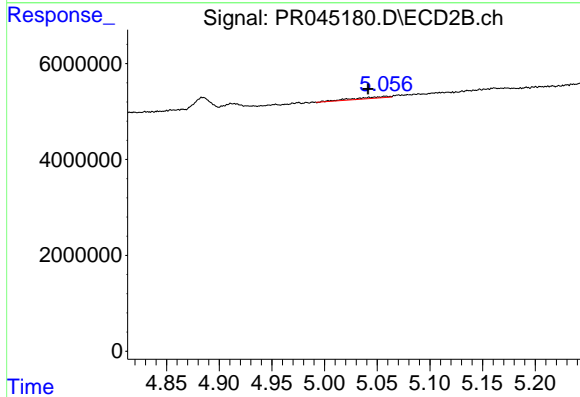
#16 AR-1242-1

R.T.: 5.058 min  
 Delta R.T.: 0.036 min  
 Response: 708481  
 Conc: 2.43 ng/ml

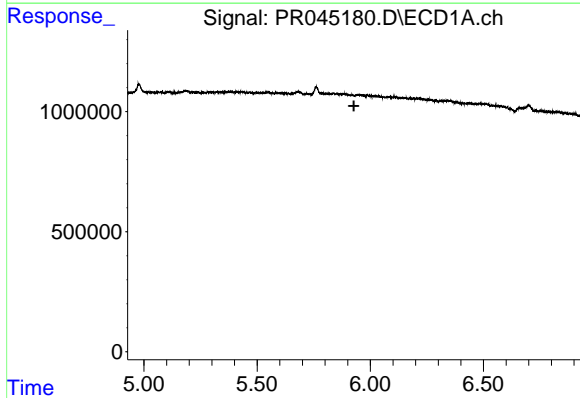


#17 AR-1242-2  
 R.T.: 5.839 min  
 Delta R.T.: -0.027 min  
 Response: 33898  
 Conc: 0.54 ng/ml

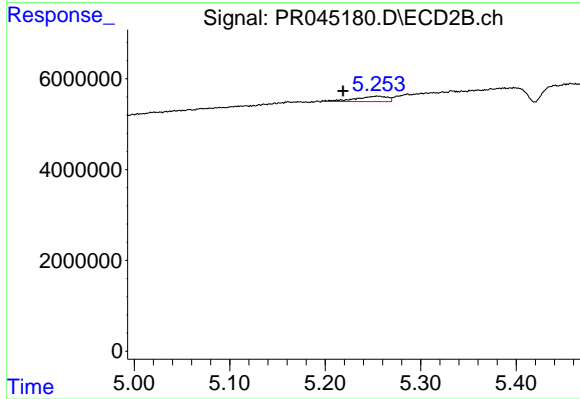
Instrument :  
 ECD\_R  
 ClientSampleId :



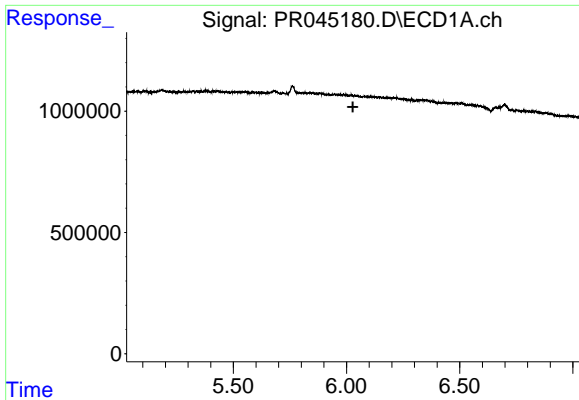
#17 AR-1242-2  
 R.T.: 5.058 min  
 Delta R.T.: 0.017 min  
 Response: 708481  
 Conc: 1.74 ng/ml



#18 AR-1242-3  
 R.T.: 0.000 min  
 Exp R.T. : 5.927 min  
 Response: 0  
 Conc: N.D.



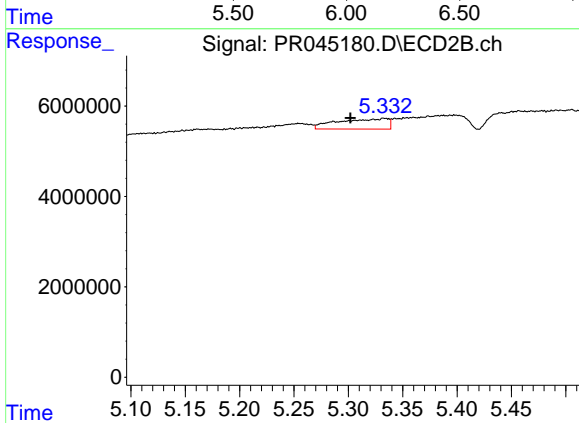
#18 AR-1242-3  
 R.T.: 5.255 min  
 Delta R.T.: 0.036 min  
 Response: 2787186  
 Conc: 12.23 ng/ml



#19 AR-1242-4

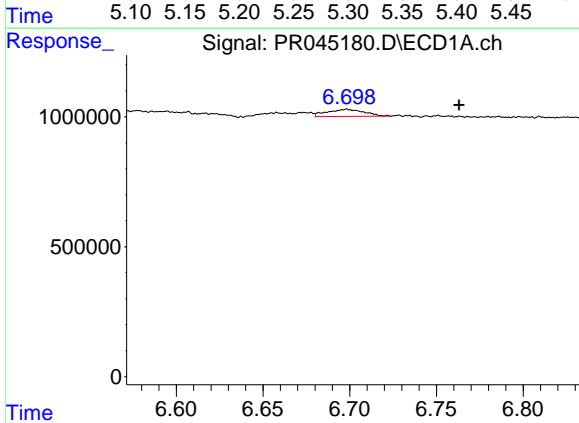
R.T.: 0.000 min  
 Exp R.T.: 6.028 min  
 Response: 0  
 Conc: N.D.

Instrument :  
 ECD\_R  
 ClientSampleId :



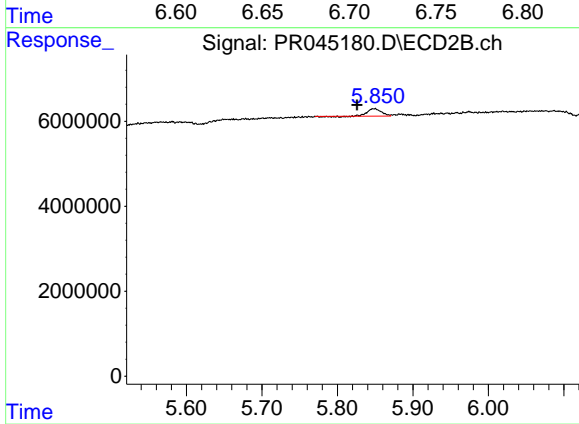
#19 AR-1242-4

R.T.: 5.333 min  
 Delta R.T.: 0.031 min  
 Response: 7399874  
 Conc: 34.16 ng/ml



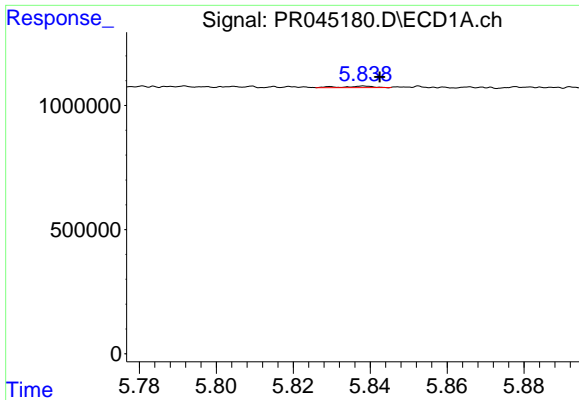
#20 AR-1242-5

R.T.: 6.698 min  
 Delta R.T.: -0.065 min  
 Response: 403236  
 Conc: 11.64 ng/ml



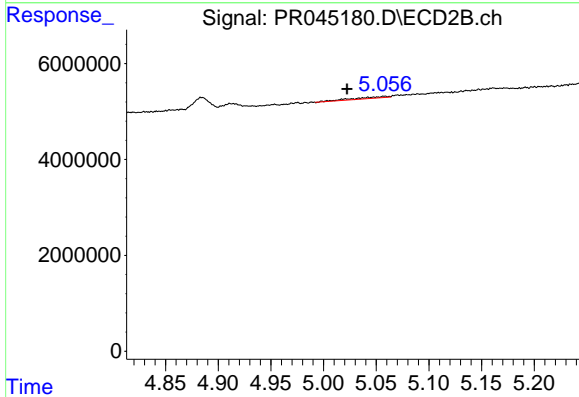
#20 AR-1242-5

R.T.: 5.849 min  
 Delta R.T.: 0.023 min  
 Response: 2062076  
 Conc: 6.56 ng/ml

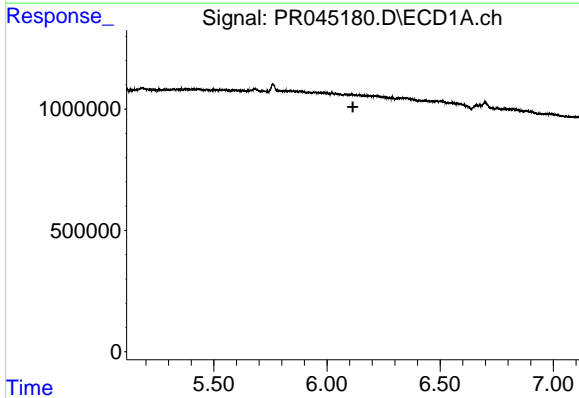


#21 AR-1248-1  
 R.T.: 5.839 min  
 Delta R.T.: -0.004 min  
 Response: 33898  
 Conc: 1.03 ng/ml

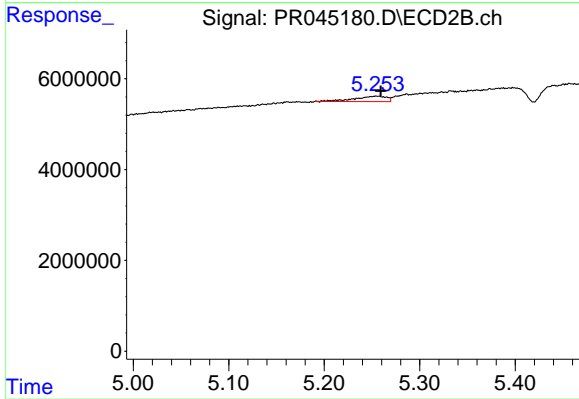
Instrument :  
 ECD\_R  
 ClientSampleId :



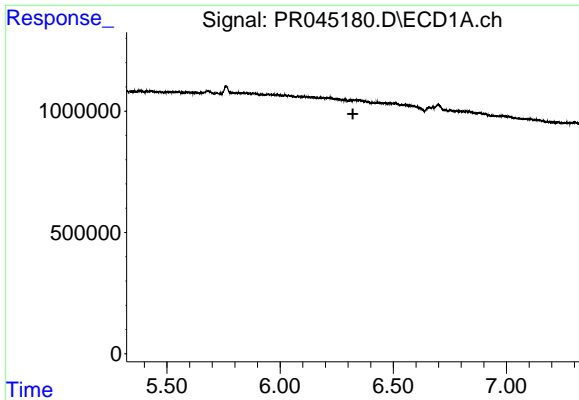
#21 AR-1248-1  
 R.T.: 5.058 min  
 Delta R.T.: 0.036 min  
 Response: 708481  
 Conc: 3.29 ng/ml



#22 AR-1248-2  
 R.T.: 0.000 min  
 Exp R.T. : 6.115 min  
 Response: 0  
 Conc: N.D.



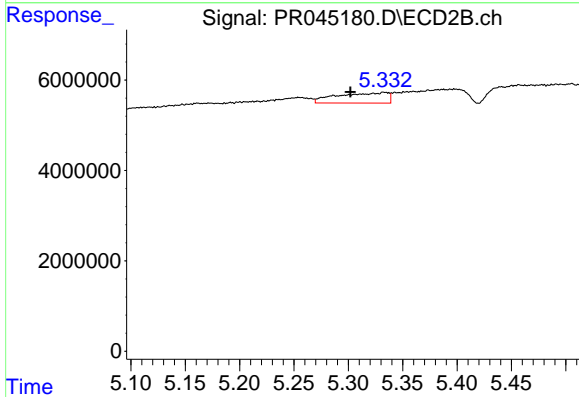
#22 AR-1248-2  
 R.T.: 5.255 min  
 Delta R.T.: -0.005 min  
 Response: 2787186  
 Conc: 10.01 ng/ml



#23 AR-1248-3

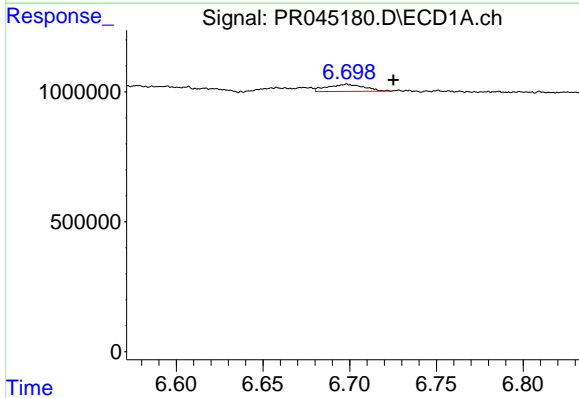
R.T.: 0.000 min  
 Exp R.T.: 6.322 min  
 Response: 0  
 Conc: N.D.

Instrument :  
 ECD\_R  
 ClientSampleId :



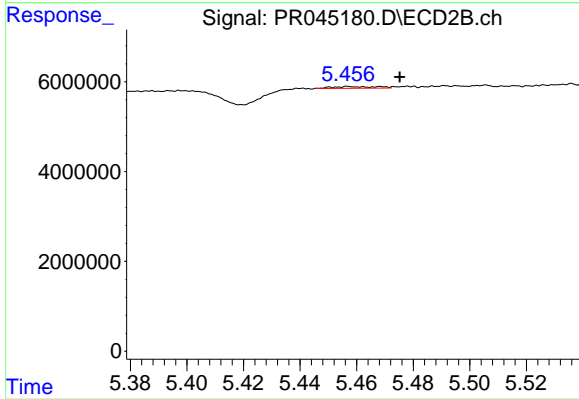
#23 AR-1248-3

R.T.: 5.333 min  
 Delta R.T.: 0.031 min  
 Response: 7399874  
 Conc: 25.52 ng/ml



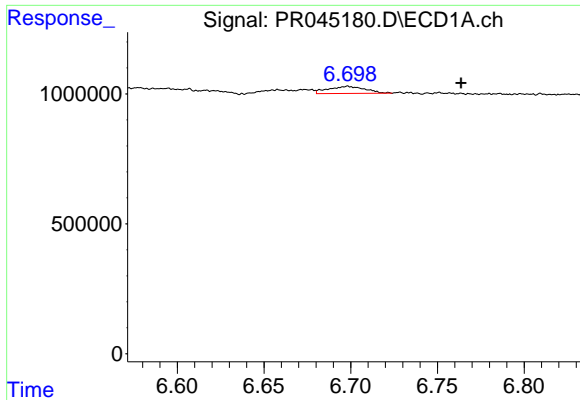
#24 AR-1248-4

R.T.: 6.698 min  
 Delta R.T.: -0.027 min  
 Response: 403236  
 Conc: 6.95 ng/ml



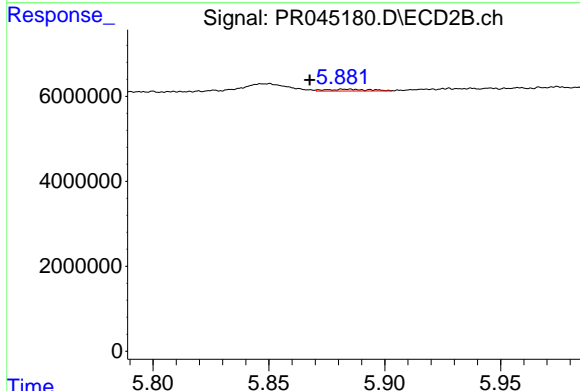
#24 AR-1248-4

R.T.: 5.457 min  
 Delta R.T.: -0.018 min  
 Response: 414145  
 Conc: 1.11 ng/ml

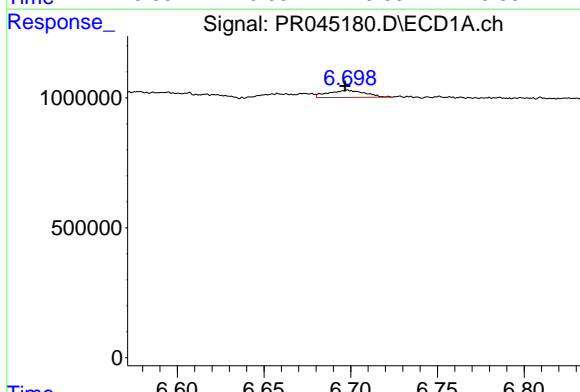


#25 AR-1248-5  
 R.T.: 6.698 min  
 Delta R.T.: -0.065 min  
 Response: 403236  
 Conc: 7.48 ng/ml

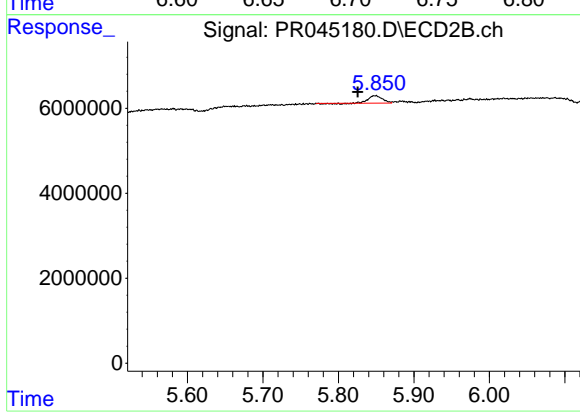
Instrument :  
 ECD\_R  
 ClientSampleId :



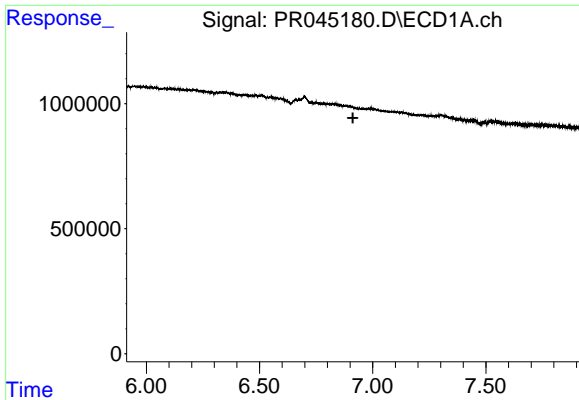
#25 AR-1248-5  
 R.T.: 5.884 min  
 Delta R.T.: 0.017 min  
 Response: 523311  
 Conc: 1.32 ng/ml



#26 AR-1254-1  
 R.T.: 6.698 min  
 Delta R.T.: 0.002 min  
 Response: 403236  
 Conc: 6.63 ng/ml



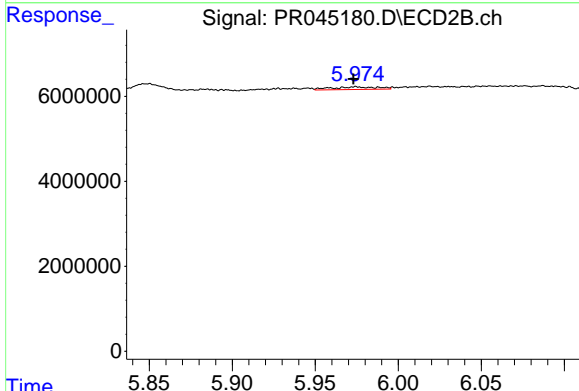
#26 AR-1254-1  
 R.T.: 5.849 min  
 Delta R.T.: 0.023 min  
 Response: 2062076  
 Conc: 3.19 ng/ml



#27 AR-1254-2

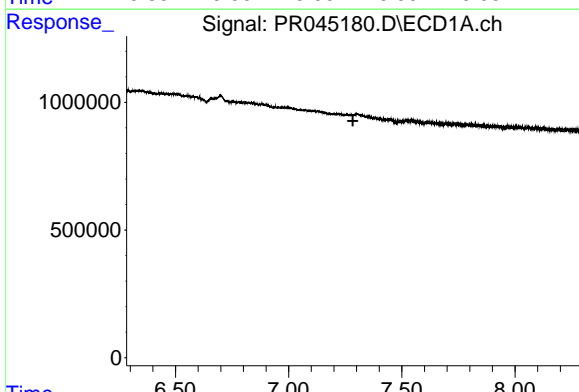
R.T.: 0.000 min  
 Exp R.T. : 6.913 min  
 Response: 0  
 Conc: N.D.

Instrument :  
 ECD\_R  
 ClientSampleId :



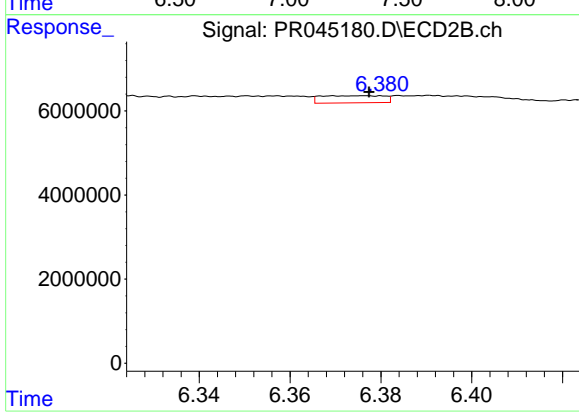
#27 AR-1254-2

R.T.: 5.974 min  
 Delta R.T.: 0.001 min  
 Response: 1155693  
 Conc: 2.04 ng/ml



#28 AR-1254-3

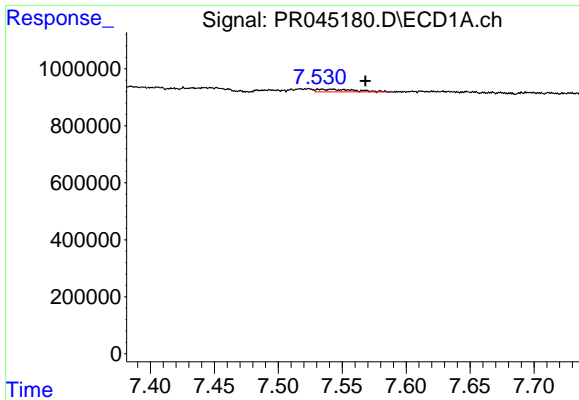
R.T.: 0.000 min  
 Exp R.T. : 7.284 min  
 Response: 0  
 Conc: N.D.



#28 AR-1254-3

R.T.: 6.376 min  
 Delta R.T.: -0.001 min  
 Response: 1640605  
 Conc: 1.75 ng/ml

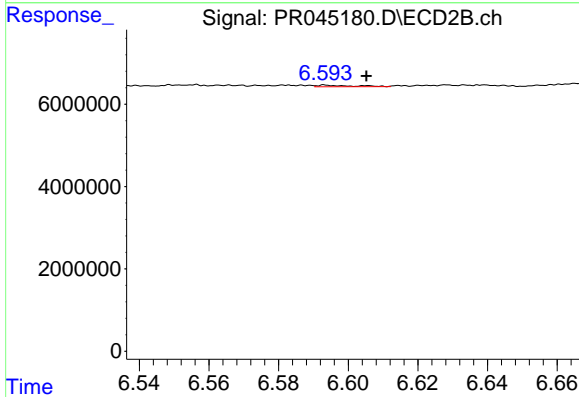




#29 AR-1254-4

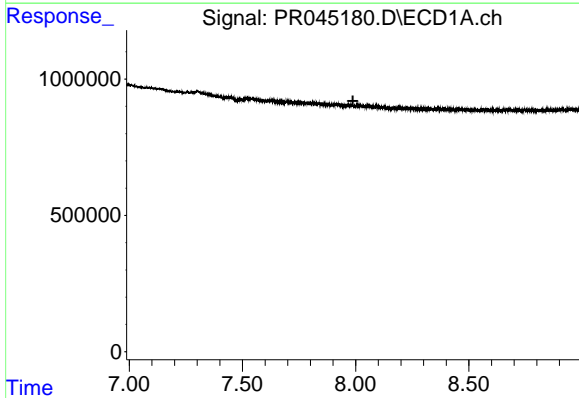
R.T.: 7.534 min  
 Delta R.T.: -0.035 min  
 Response: 192820  
 Conc: 2.44 ng/ml

Instrument :  
 ECD\_R  
 ClientSampleId :



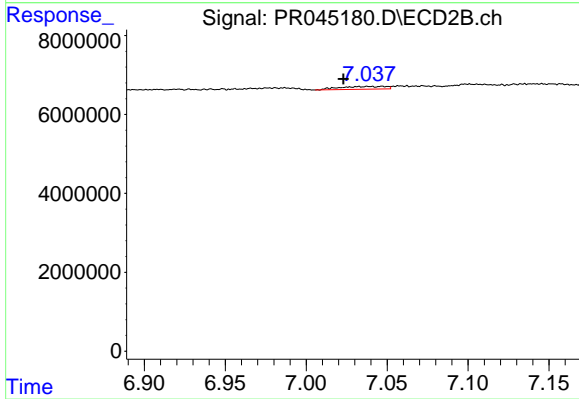
#29 AR-1254-4

R.T.: 6.594 min  
 Delta R.T.: -0.012 min  
 Response: 260688  
 Conc: 0.38 ng/ml



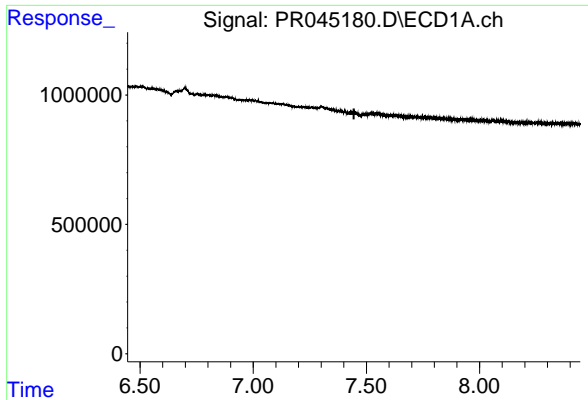
#30 AR-1254-5

R.T.: 0.000 min  
 Exp R.T. : 7.988 min  
 Response: 0  
 Conc: N.D.



#30 AR-1254-5

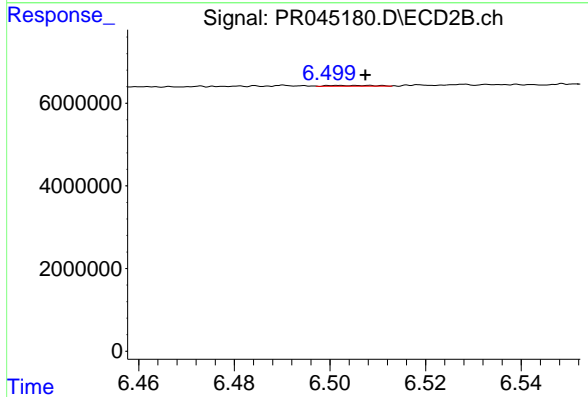
R.T.: 7.039 min  
 Delta R.T.: 0.016 min  
 Response: 1412742  
 Conc: 1.62 ng/ml



#31 AR-1260-1

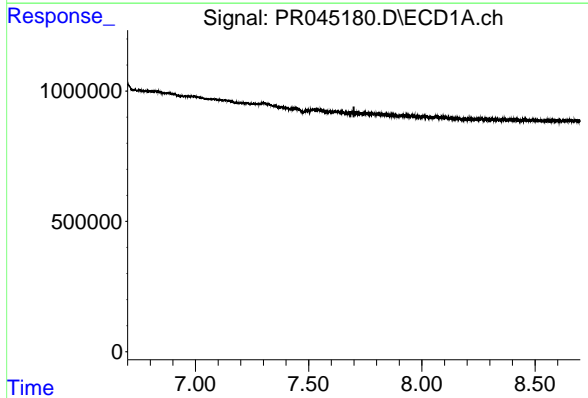
R.T.: 0.000 min  
 Exp R.T.: 7.445 min  
 Response: 0  
 Conc: N.D.

Instrument :  
 ECD\_R  
 ClientSampleId :



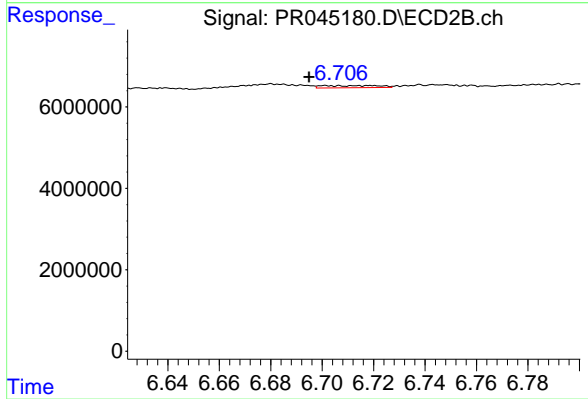
#31 AR-1260-1

R.T.: 6.502 min  
 Delta R.T.: -0.005 min  
 Response: 133576  
 Conc: 0.19 ng/ml



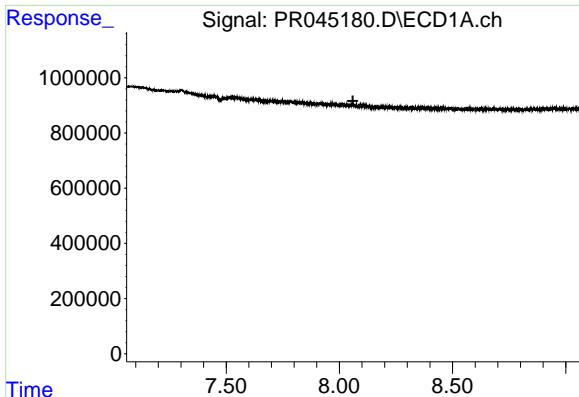
#32 AR-1260-2

R.T.: 0.000 min  
 Exp R.T.: 7.700 min  
 Response: 0  
 Conc: N.D.



#32 AR-1260-2

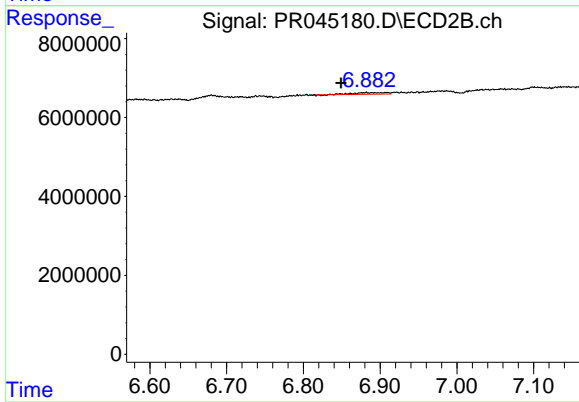
R.T.: 6.707 min  
 Delta R.T.: 0.012 min  
 Response: 823719  
 Conc: 0.79 ng/ml



#33 AR-1260-3

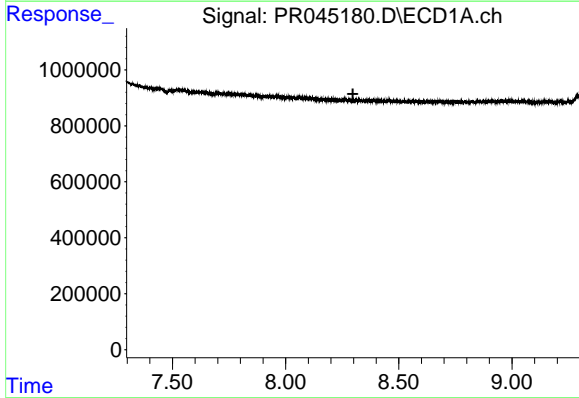
R.T.: 0.000 min  
 Exp R.T. : 8.060 min  
 Response: 0  
 Conc: N.D.

Instrument :  
 ECD\_R  
 ClientSampleId :



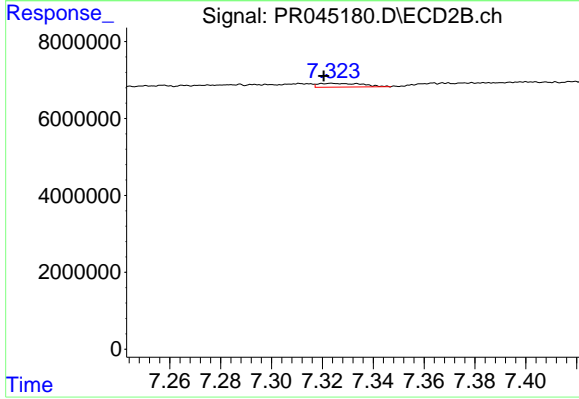
#33 AR-1260-3

R.T.: 6.882 min  
 Delta R.T.: 0.033 min  
 Response: 1072334  
 Conc: 1.26 ng/ml



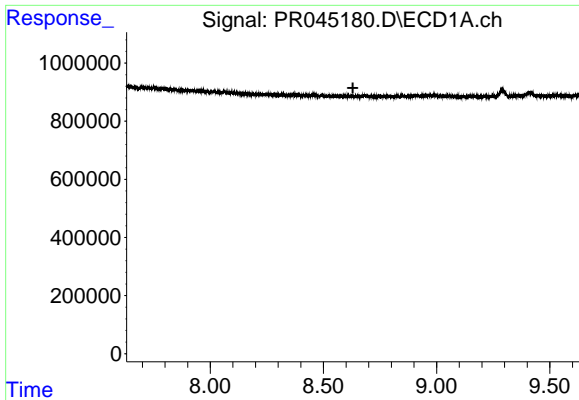
#34 AR-1260-4

R.T.: 0.000 min  
 Exp R.T. : 8.297 min  
 Response: 0  
 Conc: N.D.



#34 AR-1260-4

R.T.: 7.324 min  
 Delta R.T.: 0.003 min  
 Response: 1195857  
 Conc: 1.62 ng/ml

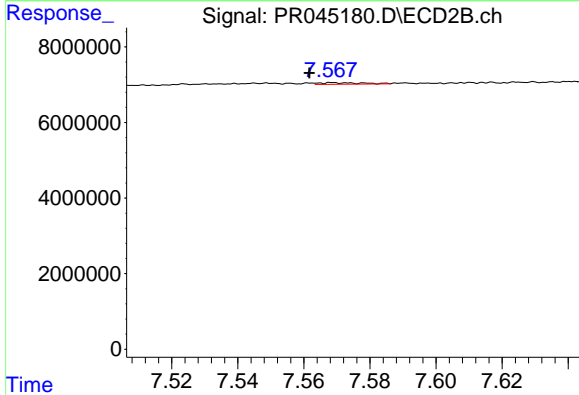


#35 AR-1260-5

R.T.: 0.000 min  
 Exp R.T.: 8.630 min  
 Response: 0  
 Conc: N.D.

Instrument :  
 ECD\_R  
 ClientSampleId :

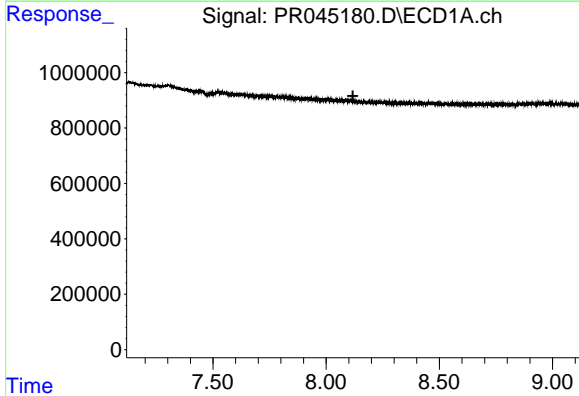
Time



#35 AR-1260-5

R.T.: 7.569 min  
 Delta R.T.: 0.007 min  
 Response: 364327  
 Conc: 0.17 ng/ml

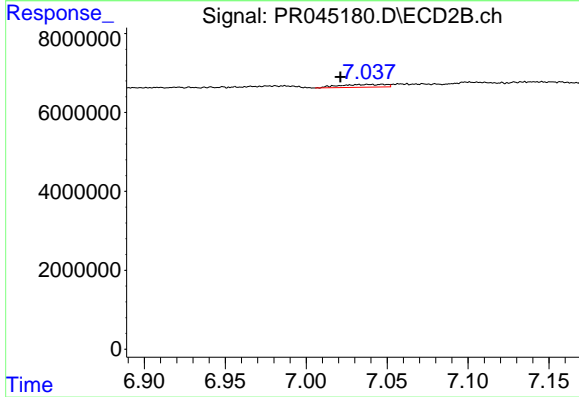
Time



#36 AR-1262-1

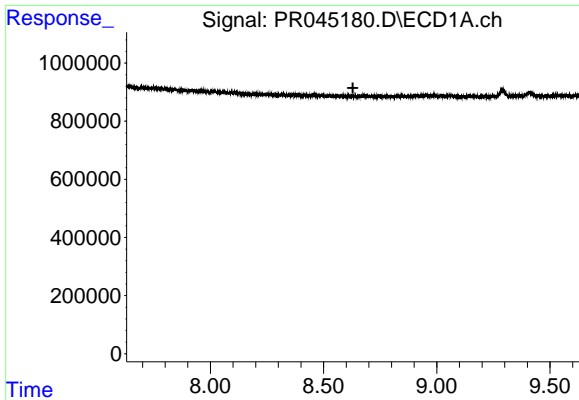
R.T.: 0.000 min  
 Exp R.T.: 8.118 min  
 Response: 0  
 Conc: N.D.

Time



#36 AR-1262-1

R.T.: 7.039 min  
 Delta R.T.: 0.017 min  
 Response: 1412742  
 Conc: 2.99 ng/ml

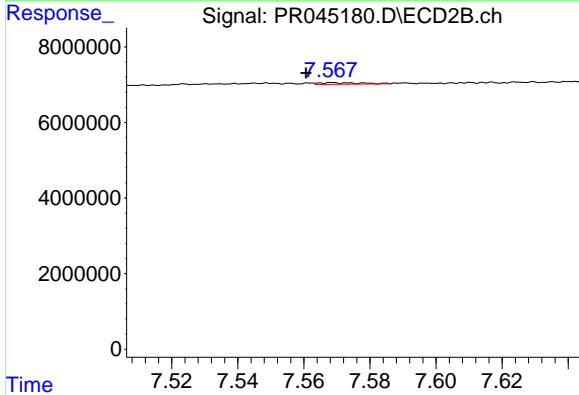


#37 AR-1262-2

R.T.: 0.000 min  
 Exp R.T.: 8.630 min  
 Response: 0  
 Conc: N.D.

Instrument :  
 ECD\_R  
 ClientSampled :

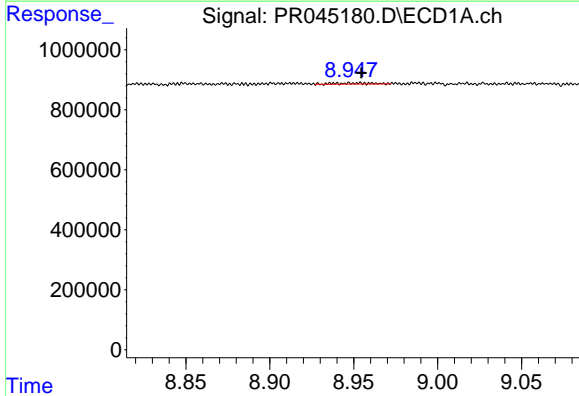
Time



#37 AR-1262-2

R.T.: 7.569 min  
 Delta R.T.: 0.008 min  
 Response: 364327  
 Conc: 0.18 ng/ml

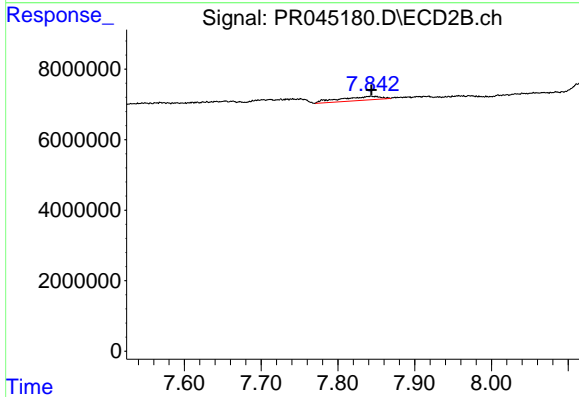
Time



#38 AR-1262-3

R.T.: 8.953 min  
 Delta R.T.: -0.002 min  
 Response: 44923  
 Conc: 0.35 ng/ml

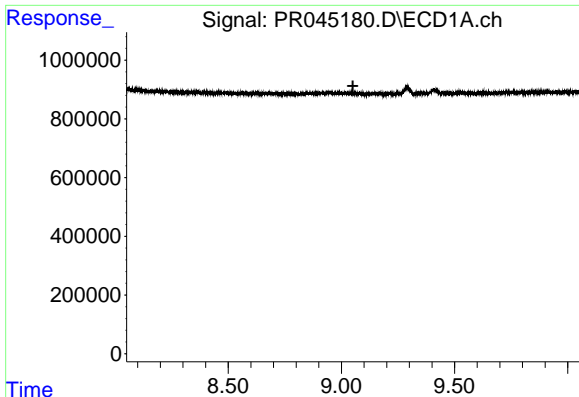
Time



#38 AR-1262-3

R.T.: 7.843 min  
 Delta R.T.: 0.000 min  
 Response: 4109239  
 Conc: 4.97 ng/ml

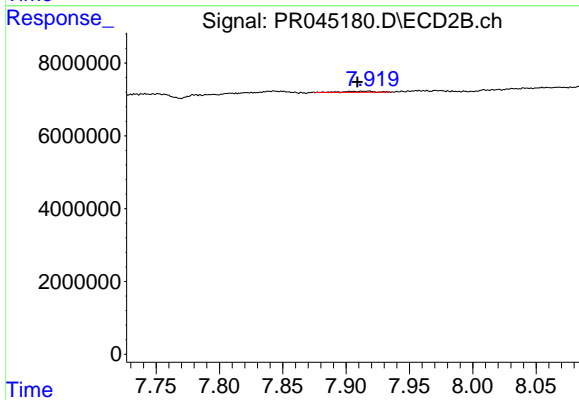
Time



#39 AR-1262-4

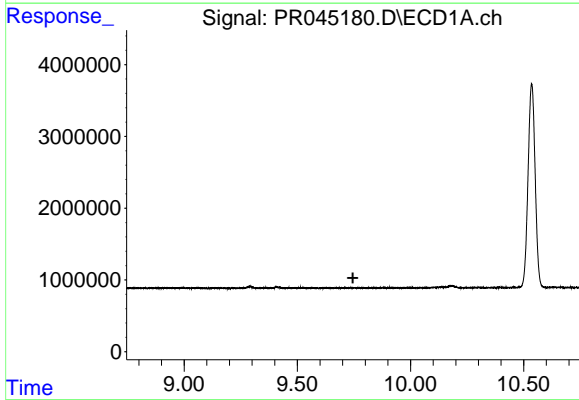
R.T.: 0.000 min  
 Exp R.T. : 9.051 min  
 Response: 0  
 Conc: N.D.

Instrument :  
 ECD\_R  
 ClientSampleId :



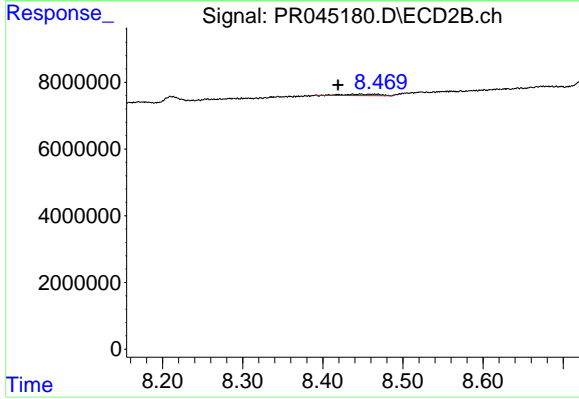
#39 AR-1262-4

R.T.: 7.907 min  
 Delta R.T.: -0.002 min  
 Response: 519243  
 Conc: 0.38 ng/ml



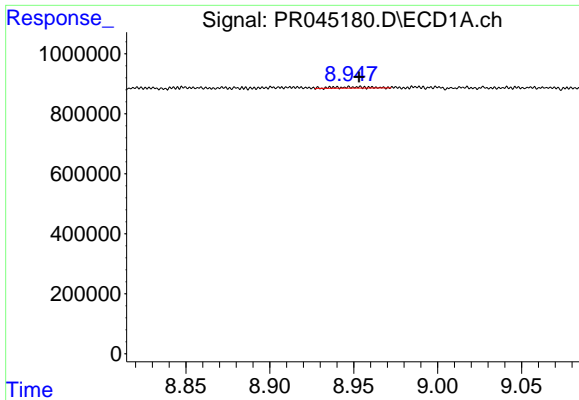
#40 AR-1262-5

R.T.: 0.000 min  
 Exp R.T. : 9.745 min  
 Response: 0  
 Conc: N.D.



#40 AR-1262-5

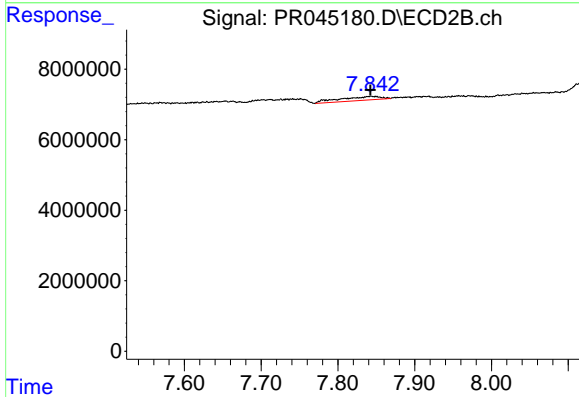
R.T.: 8.438 min  
 Delta R.T.: 0.019 min  
 Response: 1300899  
 Conc: 2.04 ng/ml



#41 AR-1268-1

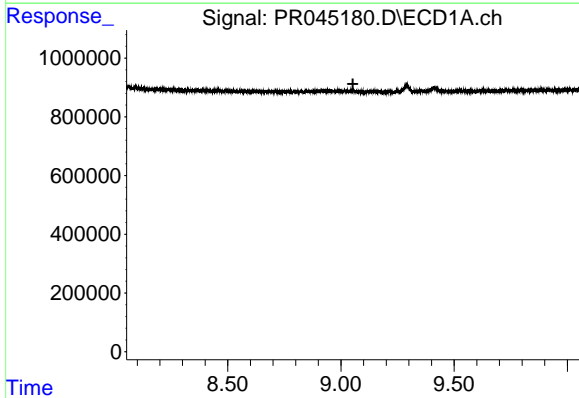
R.T.: 8.953 min  
 Delta R.T.: 0.000 min  
 Response: 44923  
 Conc: 0.19 ng/ml

Instrument :  
 ECD\_R  
 ClientSampleId :



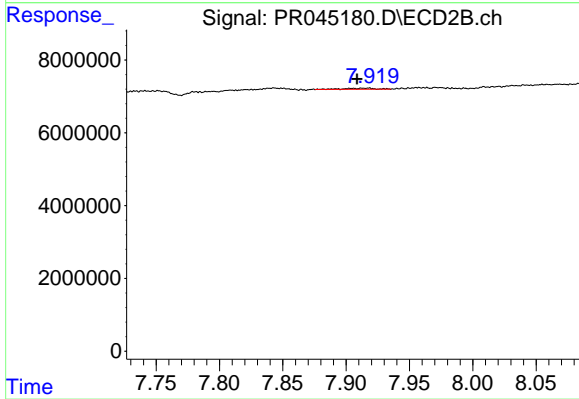
#41 AR-1268-1

R.T.: 7.843 min  
 Delta R.T.: 0.000 min  
 Response: 4109239  
 Conc: 1.66 ng/ml



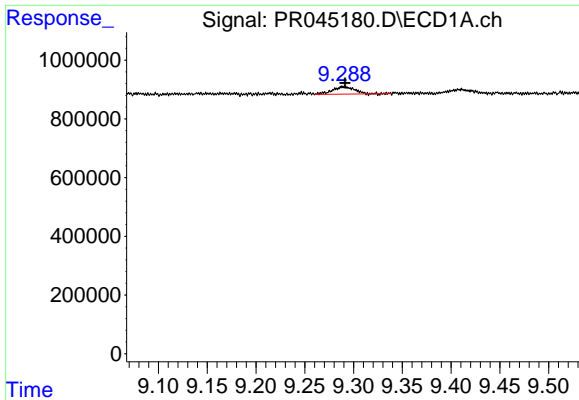
#42 AR-1268-2

R.T.: 0.000 min  
 Exp R.T. : 9.053 min  
 Response: 0  
 Conc: N.D.



#42 AR-1268-2

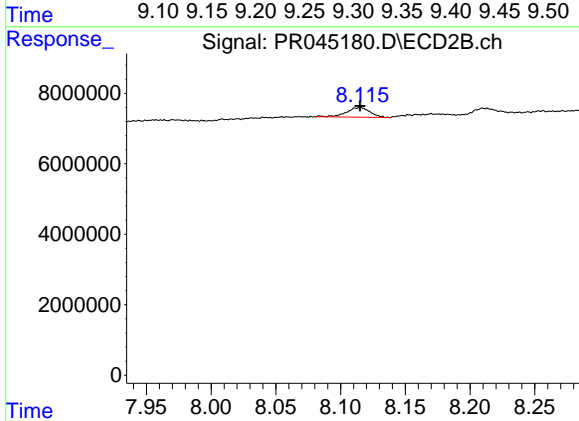
R.T.: 7.907 min  
 Delta R.T.: -0.002 min  
 Response: 519243  
 Conc: 0.25 ng/ml



#43 AR-1268-3

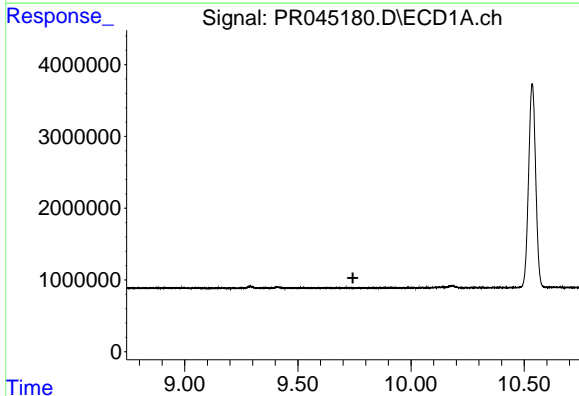
R.T.: 9.289 min  
 Delta R.T.: -0.002 min  
 Response: 395656  
 Conc: 2.11 ng/ml

Instrument :  
 ECD\_R  
 ClientSampleId :



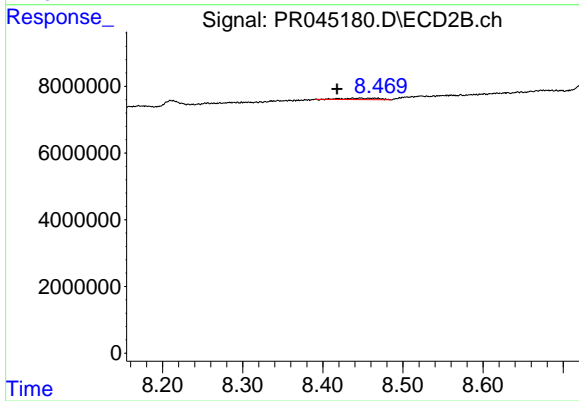
#43 AR-1268-3

R.T.: 8.115 min  
 Delta R.T.: 0.000 min  
 Response: 3465716  
 Conc: 1.95 ng/ml



#44 AR-1268-4

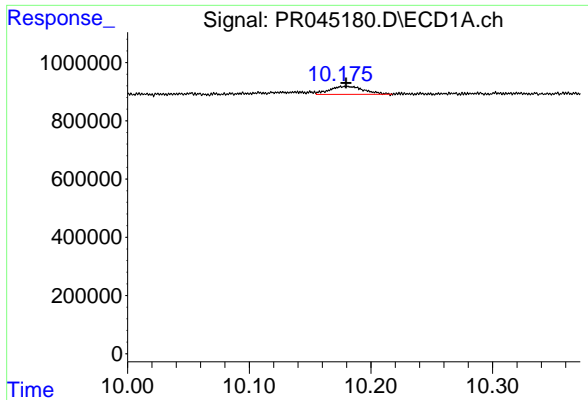
R.T.: 0.000 min  
 Exp R.T. : 9.743 min  
 Response: 0  
 Conc: N.D.



#44 AR-1268-4

R.T.: 8.438 min  
 Delta R.T.: 0.020 min  
 Response: 1300899  
 Conc: 1.79 ng/ml

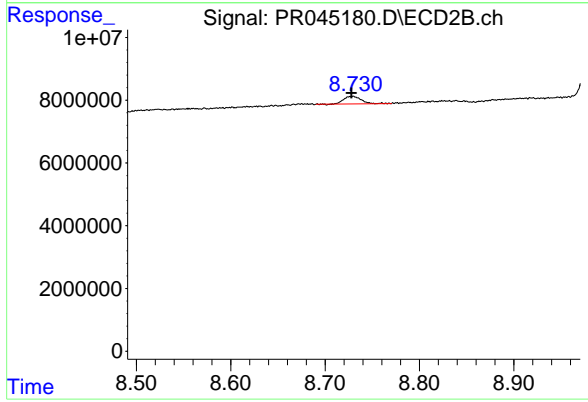




#45 AR-1268-5

R.T.: 10.180 min  
Delta R.T.: 0.000 min  
Response: 543600  
Conc: 0.91 ng/ml

Instrument :  
ECD\_R  
ClientSampleId :



#45 AR-1268-5

R.T.: 8.729 min  
Delta R.T.: 0.000 min  
Response: 3080403  
Conc: 0.60 ng/ml