

Data Path : Z:\pestpcbsrv\HPCHEM1\ECD_R\Data\PR042219\
 Data File : PR037282.D
 Signal(s) : Signal #1: ECD1A.ch Signal #2: ECD2B.ch
 Acq On : 22 Apr 2019 15:20
 Operator : SM\SJ
 Sample : K1560-01
 Misc : AR1268 LOD 25PPB
 ALS Vial : 26 Sample Multiplier: 1

Instrument :
 ECD_R
 ClientSampled :
 LOD-MDL-SOIL-01-QT1-2019

Integration File signal 1: autoint1.e
 Integration File signal 2: autoint2.e
 Quant Time: Apr 23 00:41:29 2019
 Quant Method : Z:\pestpcbsrv\HPCHEM1\ECD_R\Method\PR042219.M
 Quant Title : GC EXTRACTABLES
 QLast Update : Mon Apr 22 17:27:39 2019
 Response via : Initial Calibration
 Integrator: ChemStation

Volume Inj. : 2 µl
 Signal #1 Phase : ZB-MR1 Signal #2 Phase: ZB-MR2
 Signal #1 Info : 30Mx0.32mmx 0.50µ Signal #2 Info : 30M x 0.32mm x 0.25µm

Compound	RT#1	RT#2	Resp#1	Resp#2	ng/ml	ng/ml

System Monitoring Compounds						
1) SA Tetrachlo...	4.362	3.407	24791656	99134533	19.817	20.672
2) SA Decachlor...	9.997	8.249	28591389	135.3E6	21.618	23.234
Target Compounds						
3) L1 AR-1016-1	0.000	4.453	0	184296	N.D.	1.012 #
4) L1 AR-1016-2	0.000	4.460	0	326602	N.D.	1.158 #
5) L1 AR-1016-3	0.000	4.685	0	908562	N.D.	6.319 #
6) L1 AR-1016-4	0.000	4.685	0	908562	N.D.	8.212 #
7) L1 AR-1016-5	0.000	4.882	0	255808	N.D.	1.683 #
8) L2 AR-1221-1	0.000	3.617	0	614474	N.D.	12.068 #
9) L2 AR-1221-2	0.000	3.698	0	2138189	N.D.	57.578 #
10) L2 AR-1221-3	0.000	3.737	0	306606	N.D.	2.504 #
11) L3 AR-1232-1	0.000	3.737	0	306606	N.D.	2.621 #
12) L3 AR-1232-2	0.000	4.460	0	326602	N.D.	2.363 #
13) L3 AR-1232-3	0.000	4.685	0	908562	N.D.	12.942 #
14) L3 AR-1232-4	0.000	4.726	0	282912	N.D.	4.741 #
15) L3 AR-1232-5	0.000	4.882	0	255808	N.D.	3.748 #
16) L4 AR-1242-1	0.000	4.453	0	184296	N.D.	1.258 #
17) L4 AR-1242-2	0.000	4.460	0	326602	N.D.	1.431 #
18) L4 AR-1242-3	0.000	4.685	0	908562	N.D.	7.858 #
19) L4 AR-1242-4	0.000	4.726	0	282912	N.D.	2.574 #
20) L4 AR-1242-5	0.000	5.227	0	435927	N.D.	2.631 #
21) L5 AR-1248-1	0.000	4.453	0	184296	N.D.	1.831 #
22) L5 AR-1248-2	0.000	4.685	0	908562	N.D.	6.657 #
23) L5 AR-1248-3	0.000	4.726	0	282912	N.D.	2.021 #
24) L5 AR-1248-4	0.000	4.882	0	255808	N.D.	1.437 #
25) L5 AR-1248-5	0.000	5.269	0	256697	N.D.	1.312 #
26) L6 AR-1254-1	0.000	5.227	0	435927	N.D.	1.265 #
27) L6 AR-1254-2	0.000	5.376	0	832947	N.D.	2.781 #
28) L6 AR-1254-3	0.000	5.764	0	1335360	N.D.	2.819 #
29) L6 AR-1254-4	0.000	5.994	0	80511	N.D.	0.230 #
30) L6 AR-1254-5	0.000	6.400	0	384664	N.D.	0.869 #
31) L7 AR-1260-1	0.000	5.903	0	51512	N.D.	0.176 #
32) L7 AR-1260-2	0.000	6.074	0	1765223	N.D.	3.833 #
33) L7 AR-1260-3	7.727	6.222	1100367	148338	17.585	0.416 #
34) L7 AR-1260-4	7.970	6.679	1501366	8085351	20.179	26.530 #
35) L7 AR-1260-5	8.266	6.930	605952	3010114	4.190	3.471
36) L8 AR-1262-1	7.727	6.495	1100367	4659345	10.535	18.591 #
37) L8 AR-1262-2	8.266	6.930	605952	3010114	3.117	2.397
38) L8 AR-1262-3	8.564	7.206	5176475	38068863	39.362	69.435 #
39) L8 AR-1262-4	8.656	7.271	4668332	33344188	47.525	37.146
40) L8 AR-1262-5	9.288	7.762	1662710	9086951	24.083	23.749
41) L9 AR-1268-1	8.564	7.206	5176475	38068863	28.904	30.924

Data Path : Z:\pestpcbsrv\HPCHEM1\ECD_R\Data\PR042219\
 Data File : PR037282.D
 Signal(s) : Signal #1: ECD1A.ch Signal #2: ECD2B.ch
 Acq On : 22 Apr 2019 15:20
 Operator : SM\SJ
 Sample : K1560-01
 Misc : AR1268 LOD 25PPB
 ALS Vial : 26 Sample Multiplier: 1

Instrument :
 ECD_R
ClientSampleId :
 LOD-MDL-SOIL-01-QT1-2019

Integration File signal 1: autoint1.e
 Integration File signal 2: autoint2.e
 Quant Time: Apr 23 00:41:29 2019
 Quant Method : Z:\pestpcbsrv\HPCHEM1\ECD_R\Method\PR042219.M
 Quant Title : GC EXTRACTABLES
 QLast Update : Mon Apr 22 17:27:39 2019
 Response via : Initial Calibration
 Integrator: ChemStation

Volume Inj. : 2 µl
 Signal #1 Phase : ZB-MR1 Signal #2 Phase: ZB-MR2
 Signal #1 Info : 30Mx0.32mmx 0.50µ Signal #2 Info : 30M x 0.32mm x 0.25µm

	Compound	RT#1	RT#2	Resp#1	Resp#2	ng/ml	ng/ml
42)	L9 AR-1268-2	8.656	7.271	4668332	33344188	28.379	31.489
43)	L9 AR-1268-3	8.873	7.468	4529968	26468601	32.722	29.866
44)	L9 AR-1268-4	9.288	7.762	1662710	9086951	26.652	25.048
45)	L9 AR-1268-5	9.681	8.029	11369417	66515774	24.940	26.144

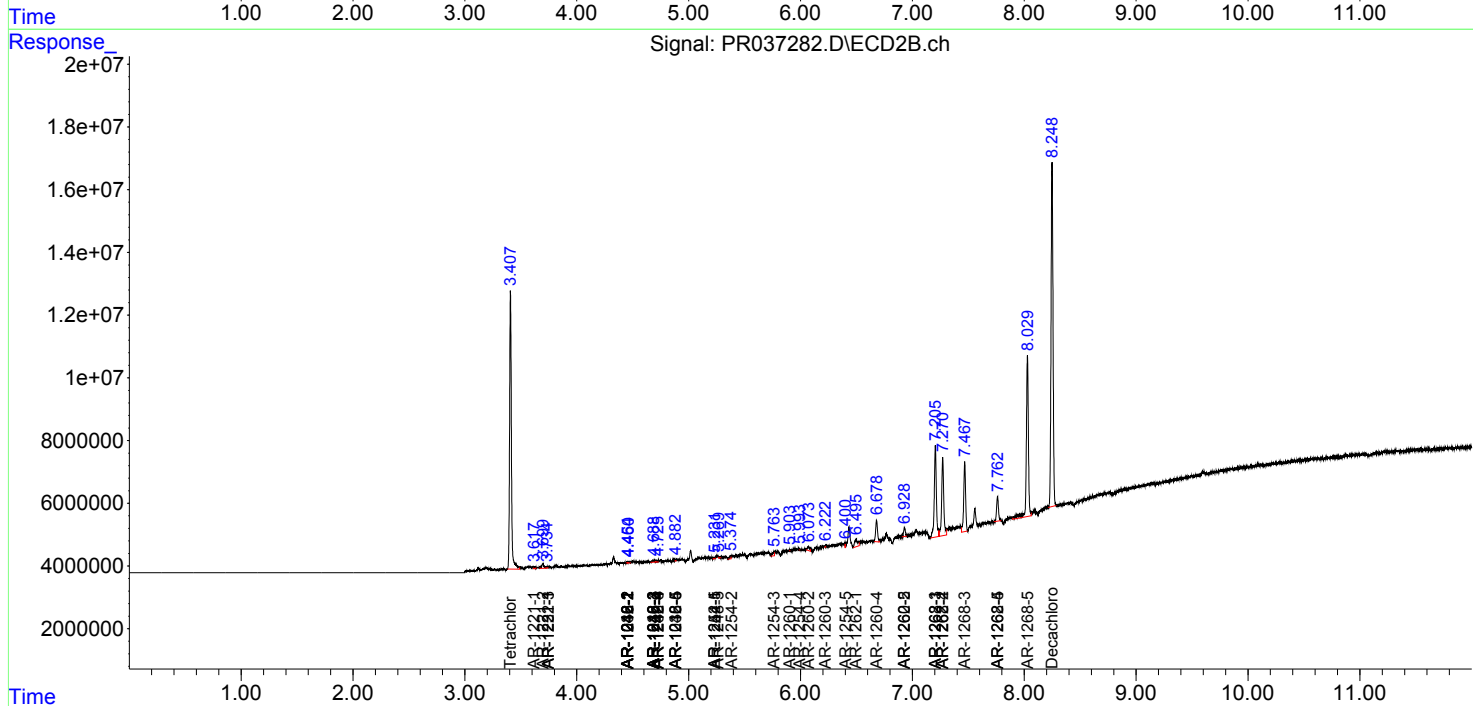
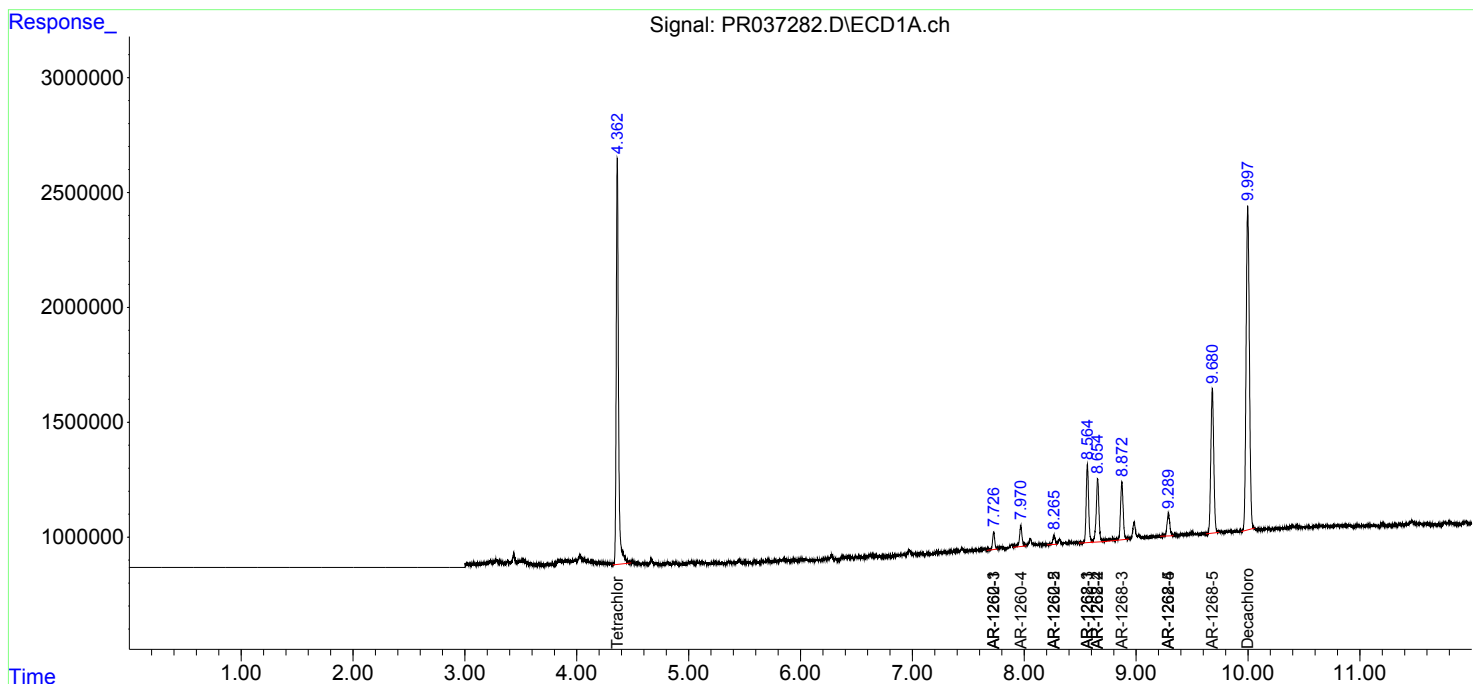
(f)=RT Delta > 1/2 Window (#)=Amounts differ by > 25% (m)=manual int.

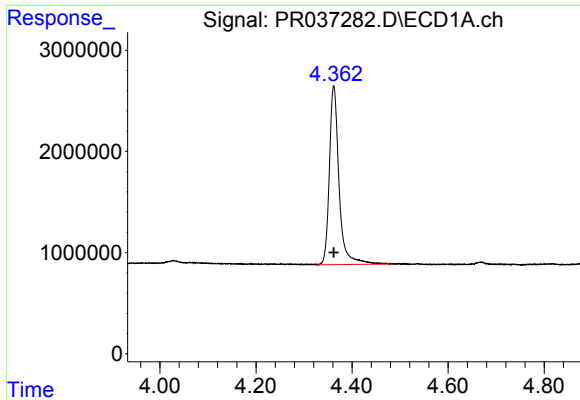
Data Path : Z:\pestpcbsrv\HPCHEM1\ECD_R\Data\PR042219\
 Data File : PR037282.D
 Signal(s) : Signal #1: ECD1A.ch Signal #2: ECD2B.ch
 Acq On : 22 Apr 2019 15:20
 Operator : SM\SJ
 Sample : K1560-01
 Misc : AR1268 LOD 25PPB
 ALS Vial : 26 Sample Multiplier: 1

Instrument :
 ECD_R
 Client Sampled :
 LOD-MDL-SOIL-01-QT1-2019

Integration File signal 1: autoint1.e
 Integration File signal 2: autoint2.e
 Quant Time: Apr 23 00:41:29 2019
 Quant Method : Z:\pestpcbsrv\HPCHEM1\ECD_R\Method\PR042219.M
 Quant Title : GC EXTRACTABLES
 QLast Update : Mon Apr 22 17:27:39 2019
 Response via : Initial Calibration
 Integrator: ChemStation

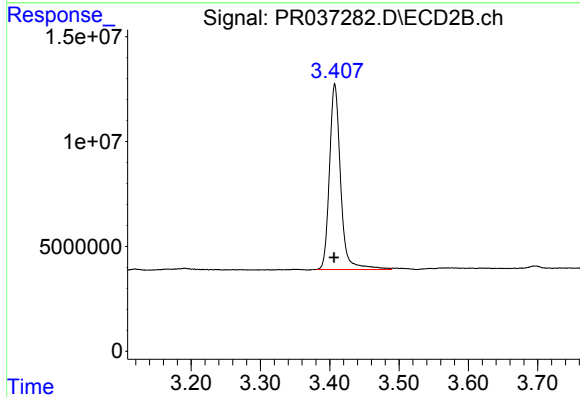
Volume Inj. : 2 µl
 Signal #1 Phase : ZB-MR1 Signal #2 Phase: ZB-MR2
 Signal #1 Info : 30Mx0.32mmx 0.50µ Signal #2 Info : 30M x 0.32mm x 0.25µm



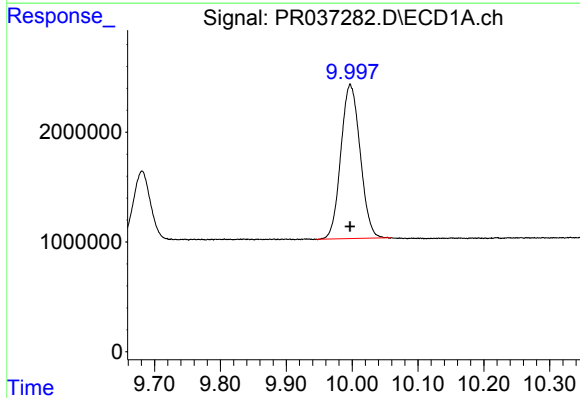


#1 Tetrachloro-m-xylene
 R.T.: 4.362 min
 Delta R.T.: 0.000 min
 Response: 24791656
 Conc: 19.82 ng/ml

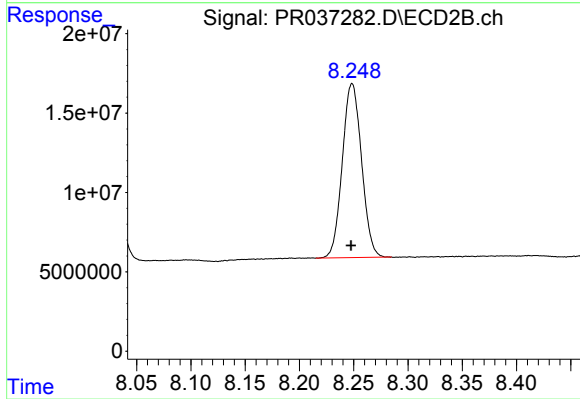
Instrument :
 ECD_R
 ClientSampleId :
 LOD-MDL-SOIL-01-QT1-2019



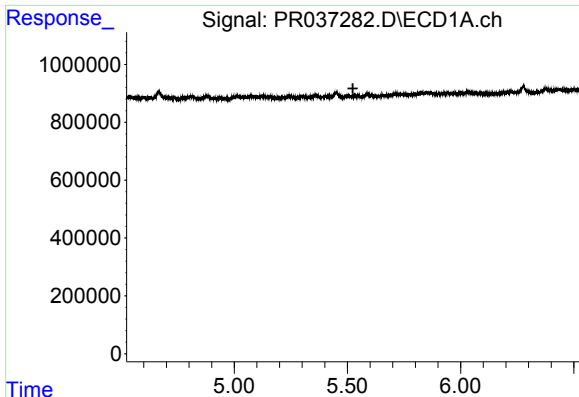
#1 Tetrachloro-m-xylene
 R.T.: 3.407 min
 Delta R.T.: 0.000 min
 Response: 99134533
 Conc: 20.67 ng/ml



#2 Decachlorobiphenyl
 R.T.: 9.997 min
 Delta R.T.: 0.000 min
 Response: 28591389
 Conc: 21.62 ng/ml



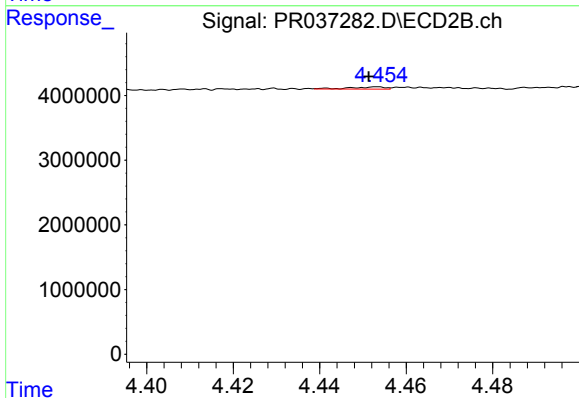
#2 Decachlorobiphenyl
 R.T.: 8.249 min
 Delta R.T.: 0.001 min
 Response: 135318606
 Conc: 23.23 ng/ml



#3 AR-1016-1

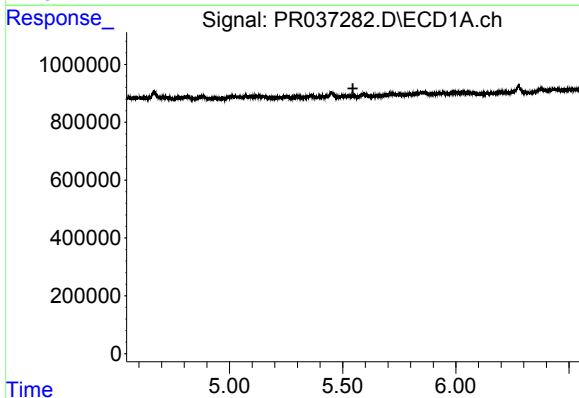
R.T.: 0.000 min
 Exp R.T. : 5.524 min
 Response: 0
 Conc: N.D.

Instrument :
 ECD_R
 ClientSampleId :
 LOD-MDL-SOIL-01-QT1-2019



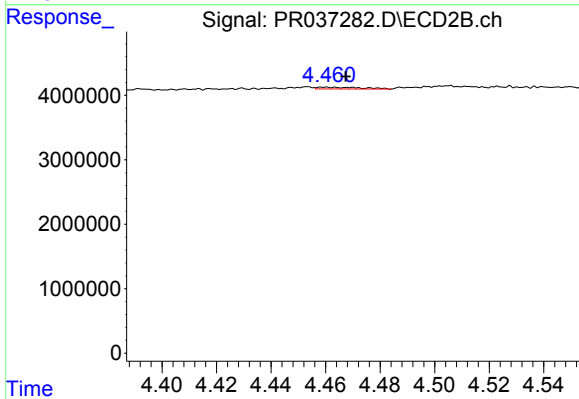
#3 AR-1016-1

R.T.: 4.453 min
 Delta R.T.: 0.002 min
 Response: 184296
 Conc: 1.01 ng/ml



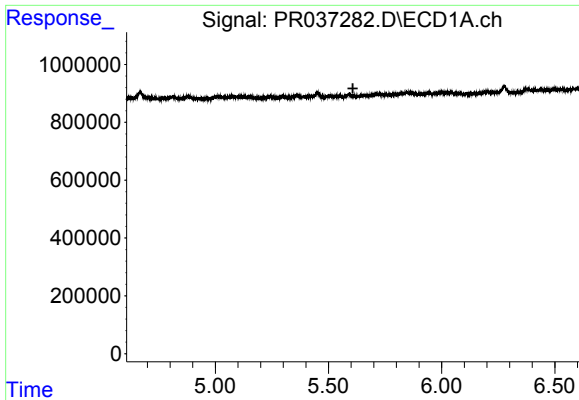
#4 AR-1016-2

R.T.: 0.000 min
 Exp R.T. : 5.545 min
 Response: 0
 Conc: N.D.



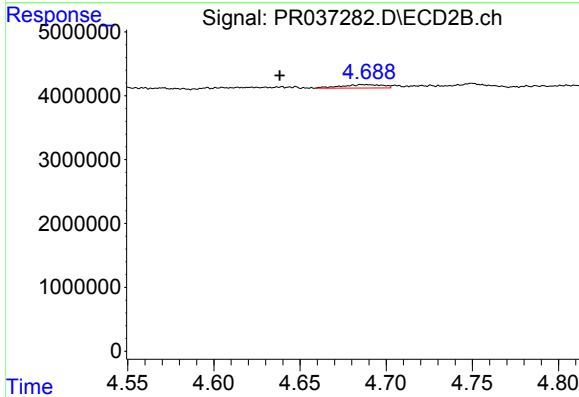
#4 AR-1016-2

R.T.: 4.460 min
 Delta R.T.: -0.007 min
 Response: 326602
 Conc: 1.16 ng/ml

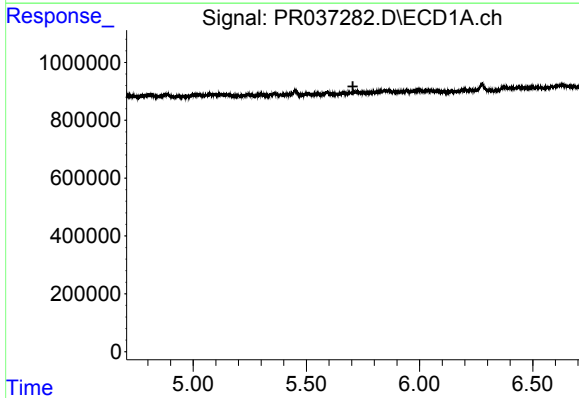


#5 AR-1016-3
 R.T.: 0.000 min
 Exp R.T.: 5.608 min
 Response: 0
 Conc: N.D.

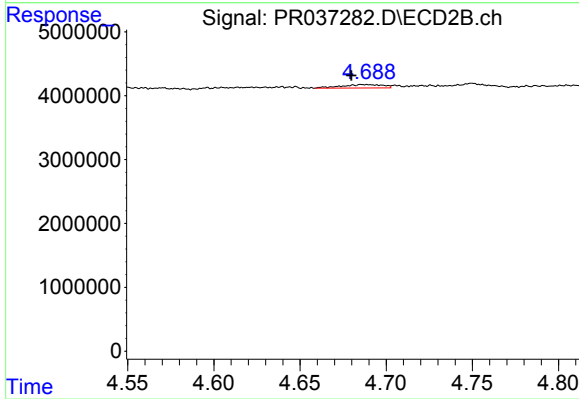
Instrument :
 ECD_R
 ClientSampleId :
 LOD-MDL-SOIL-01-QT1-2019



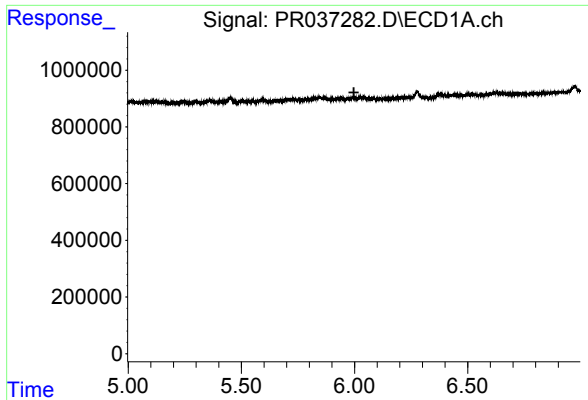
#5 AR-1016-3
 R.T.: 4.685 min
 Delta R.T.: 0.047 min
 Response: 908562
 Conc: 6.32 ng/ml



#6 AR-1016-4
 R.T.: 0.000 min
 Exp R.T.: 5.705 min
 Response: 0
 Conc: N.D.



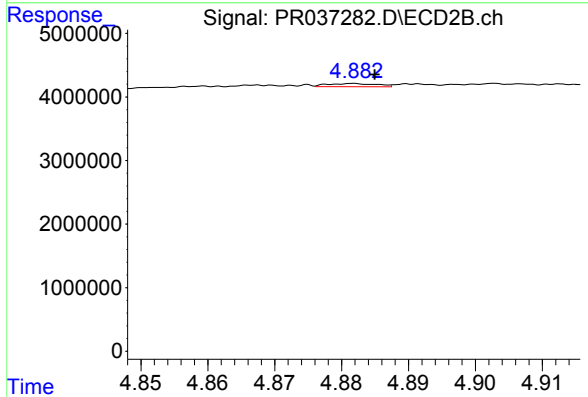
#6 AR-1016-4
 R.T.: 4.685 min
 Delta R.T.: 0.006 min
 Response: 908562
 Conc: 8.21 ng/ml



#7 AR-1016-5

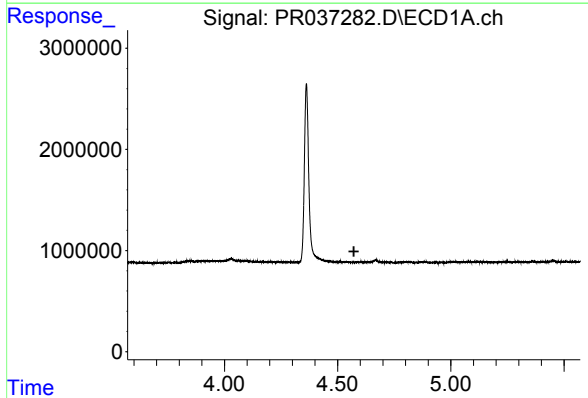
R.T.: 0.000 min
 Exp R.T. : 5.997 min
 Response: 0
 Conc: N.D.

Instrument :
 ECD_R
ClientSampleId :
 LOD-MDL-SOIL-01-QT1-2019



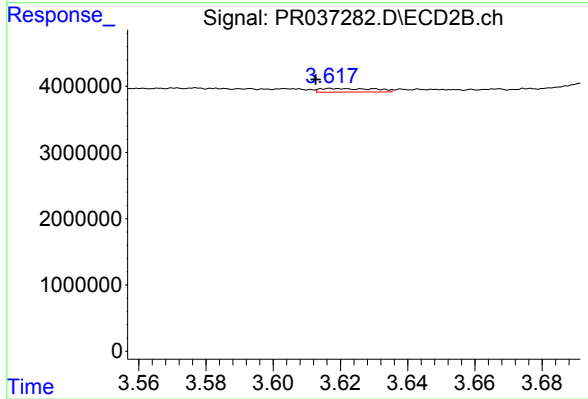
#7 AR-1016-5

R.T.: 4.882 min
 Delta R.T.: -0.003 min
 Response: 255808
 Conc: 1.68 ng/ml



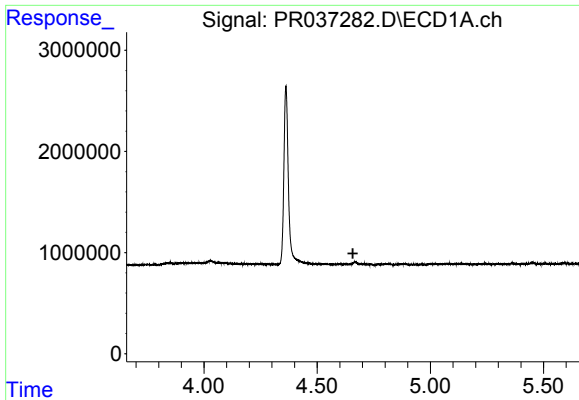
#8 AR-1221-1

R.T.: 0.000 min
 Exp R.T. : 4.572 min
 Response: 0
 Conc: N.D.



#8 AR-1221-1

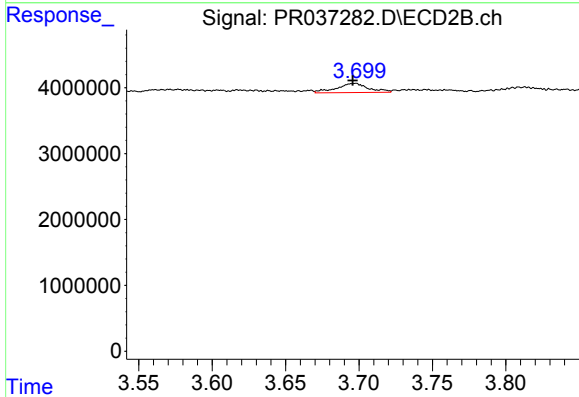
R.T.: 3.617 min
 Delta R.T.: 0.004 min
 Response: 614474
 Conc: 12.07 ng/ml



#9 AR-1221-2

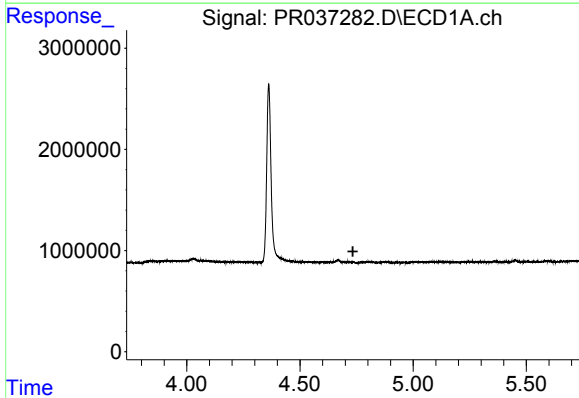
R.T.: 0.000 min
 Exp R.T. : 4.658 min
 Response: 0
 Conc: N.D.

Instrument :
 ECD_R
 ClientSampleId :
 LOD-MDL-SOIL-01-QT1-2019



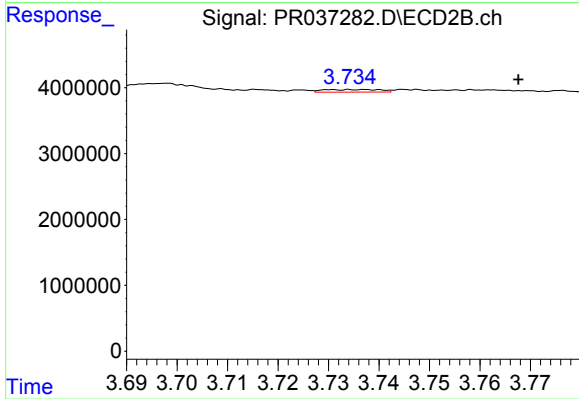
#9 AR-1221-2

R.T.: 3.698 min
 Delta R.T.: 0.002 min
 Response: 2138189
 Conc: 57.58 ng/ml



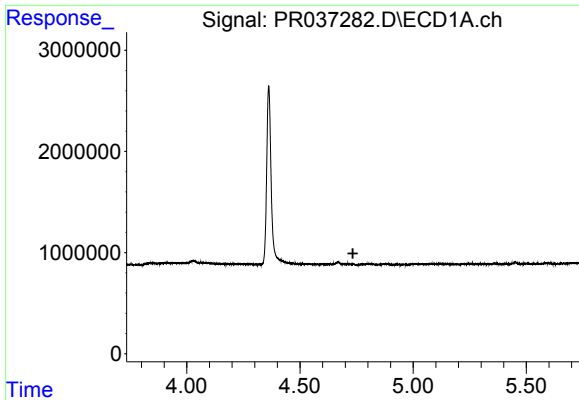
#10 AR-1221-3

R.T.: 0.000 min
 Exp R.T. : 4.734 min
 Response: 0
 Conc: N.D.



#10 AR-1221-3

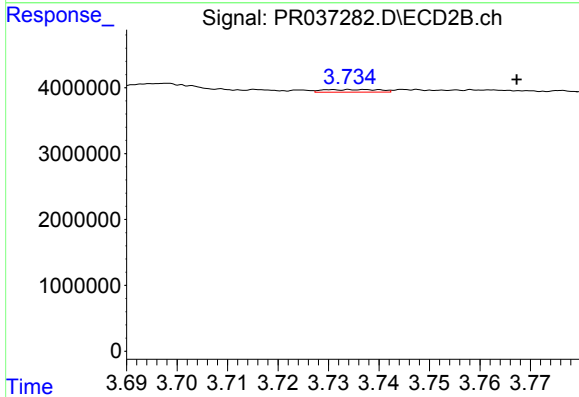
R.T.: 3.737 min
 Delta R.T.: -0.030 min
 Response: 306606
 Conc: 2.50 ng/ml



#11 AR-1232-1

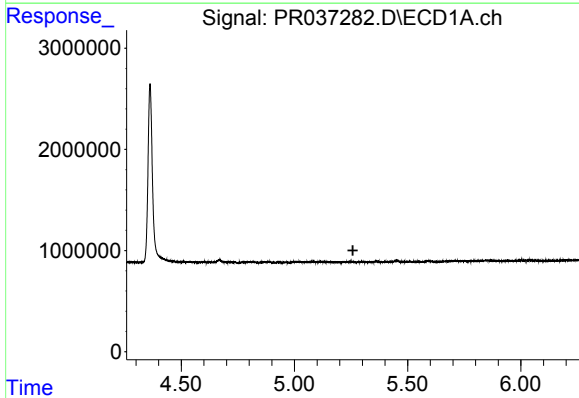
R.T.: 0.000 min
 Exp R.T. : 4.734 min
 Response: 0
 Conc: N.D.

Instrument :
 ECD_R
 ClientSampleId :
 LOD-MDL-SOIL-01-QT1-2019



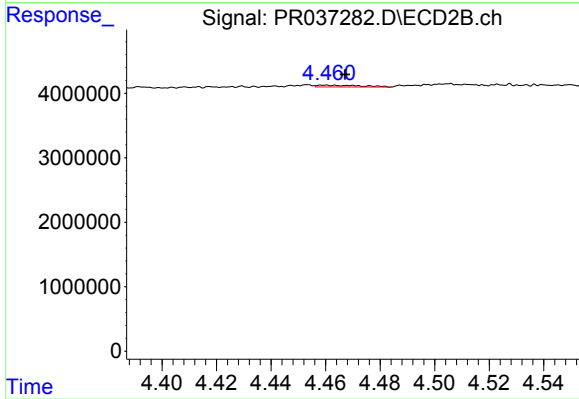
#11 AR-1232-1

R.T.: 3.737 min
 Delta R.T.: -0.030 min
 Response: 306606
 Conc: 2.62 ng/ml



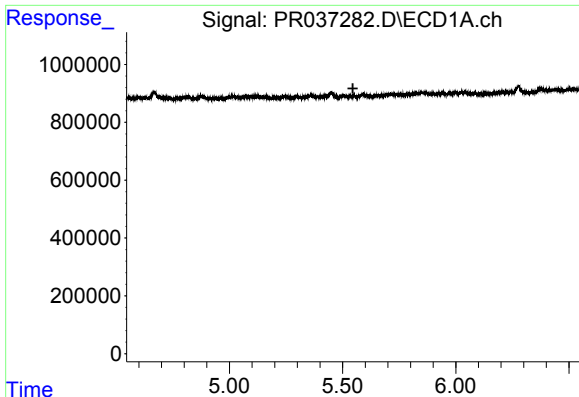
#12 AR-1232-2

R.T.: 0.000 min
 Exp R.T. : 5.258 min
 Response: 0
 Conc: N.D.



#12 AR-1232-2

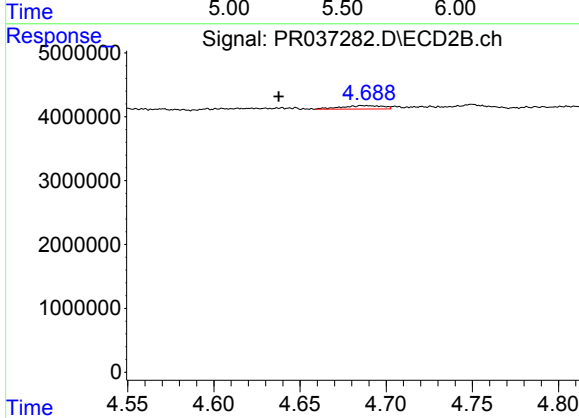
R.T.: 4.460 min
 Delta R.T.: -0.007 min
 Response: 326602
 Conc: 2.36 ng/ml



#13 AR-1232-3

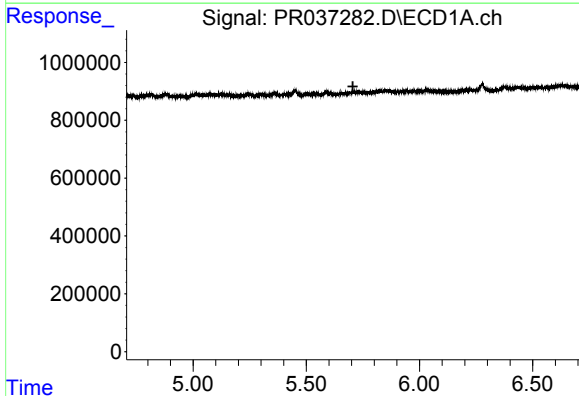
R.T.: 0.000 min
 Exp R.T. : 5.545 min
 Response: 0
 Conc: N.D.

Instrument :
 ECD_R
 ClientSampleId :
 LOD-MDL-SOIL-01-QT1-2019



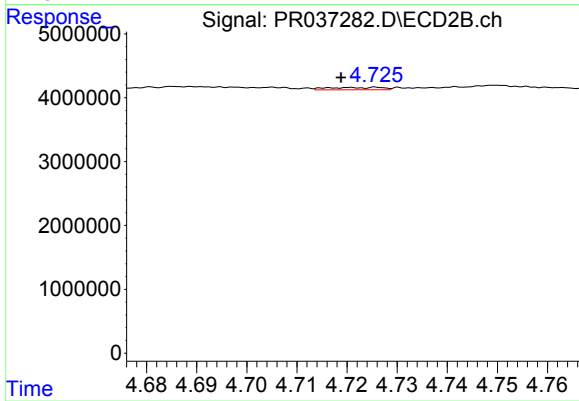
#13 AR-1232-3

R.T.: 4.685 min
 Delta R.T.: 0.048 min
 Response: 908562
 Conc: 12.94 ng/ml



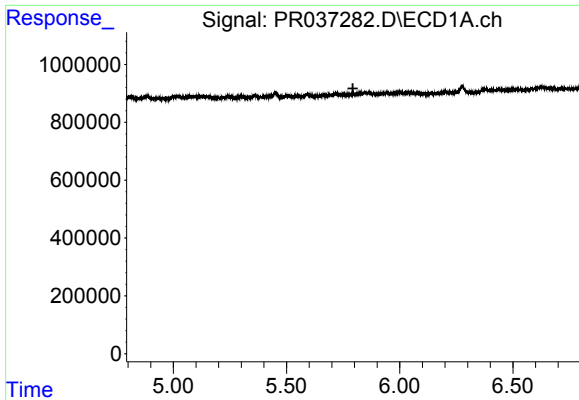
#14 AR-1232-4

R.T.: 0.000 min
 Exp R.T. : 5.706 min
 Response: 0
 Conc: N.D.



#14 AR-1232-4

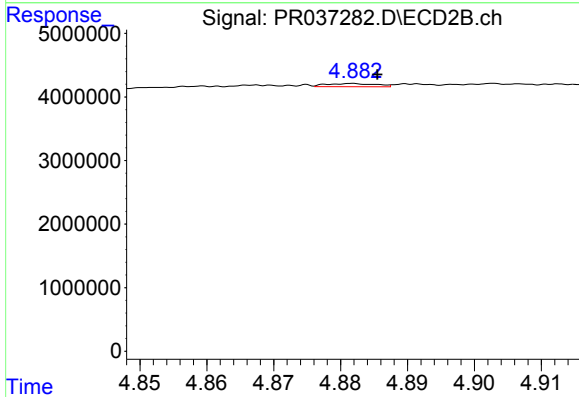
R.T.: 4.726 min
 Delta R.T.: 0.007 min
 Response: 282912
 Conc: 4.74 ng/ml



#15 AR-1232-5

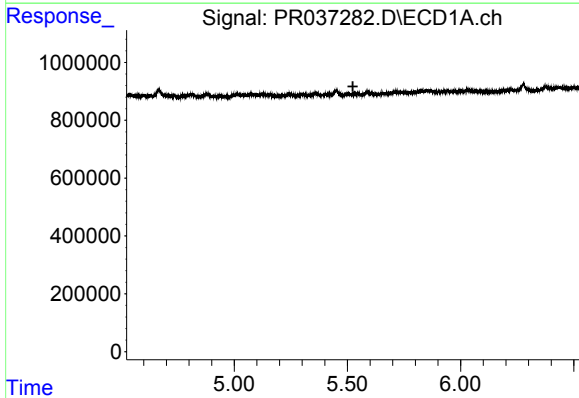
R.T.: 0.000 min
 Exp R.T.: 5.793 min
 Response: 0
 Conc: N.D.

Instrument :
 ECD_R
 ClientSampleId :
 LOD-MDL-SOIL-01-QT1-2019



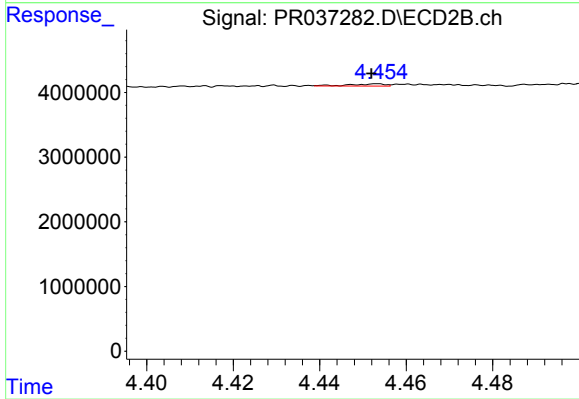
#15 AR-1232-5

R.T.: 4.882 min
 Delta R.T.: -0.004 min
 Response: 255808
 Conc: 3.75 ng/ml



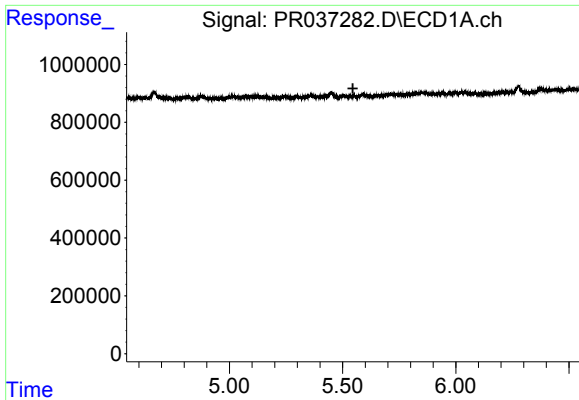
#16 AR-1242-1

R.T.: 0.000 min
 Exp R.T.: 5.524 min
 Response: 0
 Conc: N.D.



#16 AR-1242-1

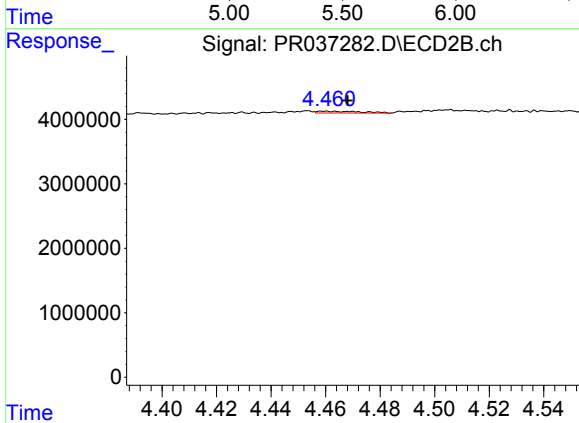
R.T.: 4.453 min
 Delta R.T.: 0.001 min
 Response: 184296
 Conc: 1.26 ng/ml



#17 AR-1242-2

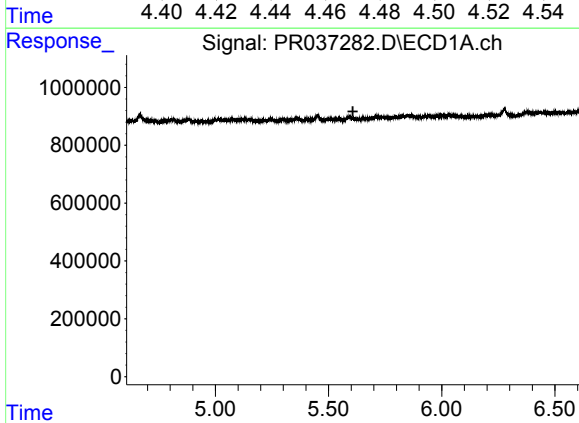
R.T.: 0.000 min
 Exp R.T.: 5.545 min
 Response: 0
 Conc: N.D.

Instrument :
 ECD_R
 ClientSampleId :
 LOD-MDL-SOIL-01-QT1-2019



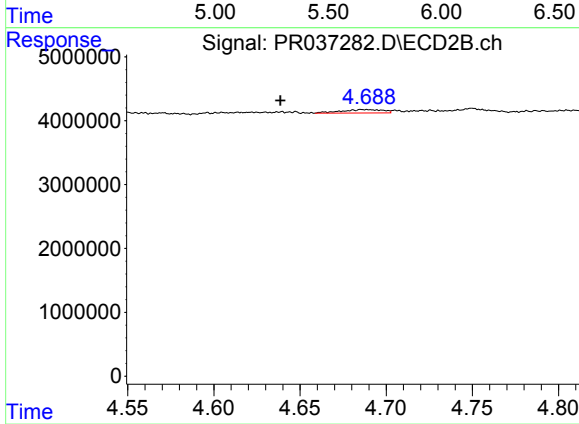
#17 AR-1242-2

R.T.: 4.460 min
 Delta R.T.: -0.008 min
 Response: 326602
 Conc: 1.43 ng/ml



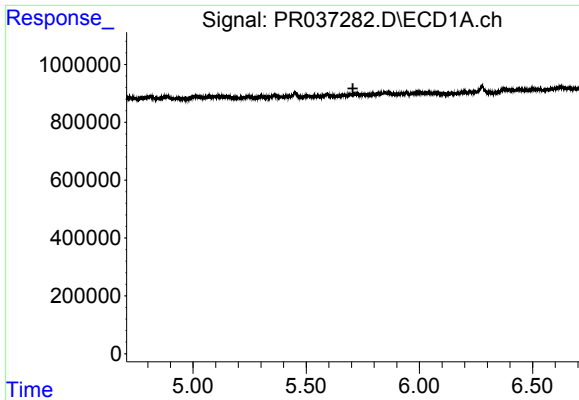
#18 AR-1242-3

R.T.: 0.000 min
 Exp R.T.: 5.608 min
 Response: 0
 Conc: N.D.



#18 AR-1242-3

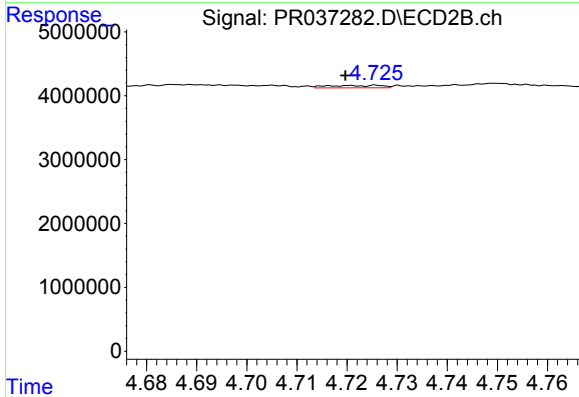
R.T.: 4.685 min
 Delta R.T.: 0.047 min
 Response: 908562
 Conc: 7.86 ng/ml



#19 AR-1242-4

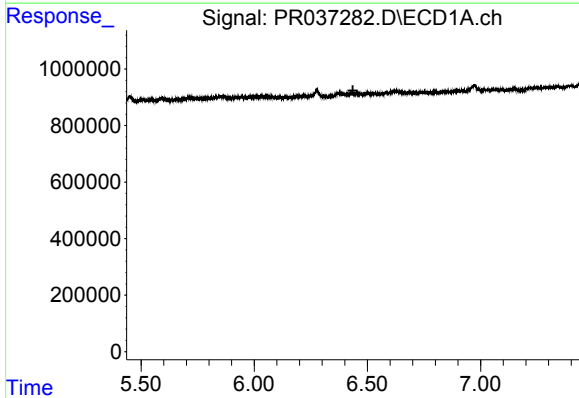
R.T.: 0.000 min
 Exp R.T.: 5.706 min
 Response: 0
 Conc: N.D.

Instrument :
 ECD_R
ClientSampleId :
 LOD-MDL-SOIL-01-QT1-2019



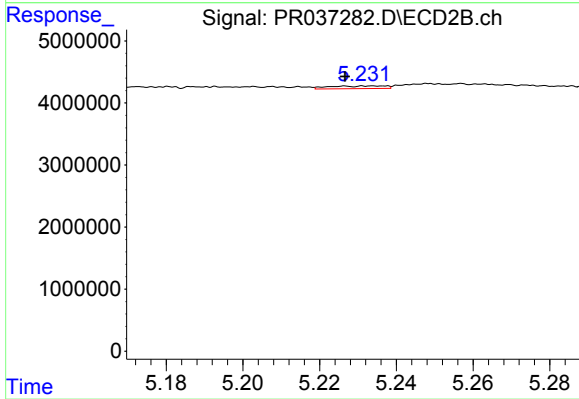
#19 AR-1242-4

R.T.: 4.726 min
 Delta R.T.: 0.006 min
 Response: 282912
 Conc: 2.57 ng/ml



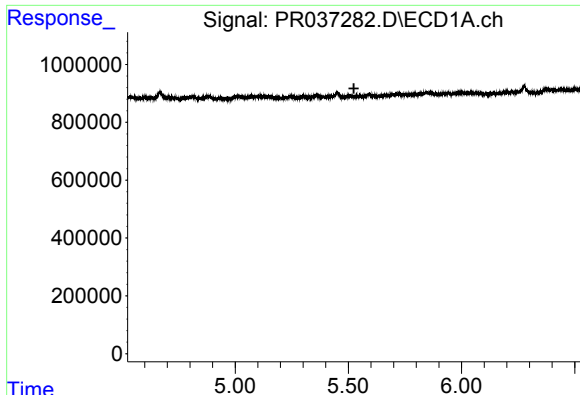
#20 AR-1242-5

R.T.: 0.000 min
 Exp R.T.: 6.436 min
 Response: 0
 Conc: N.D.



#20 AR-1242-5

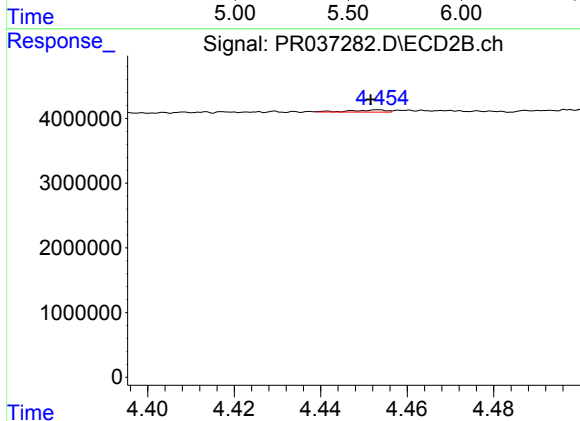
R.T.: 5.227 min
 Delta R.T.: 0.000 min
 Response: 435927
 Conc: 2.63 ng/ml



#21 AR-1248-1

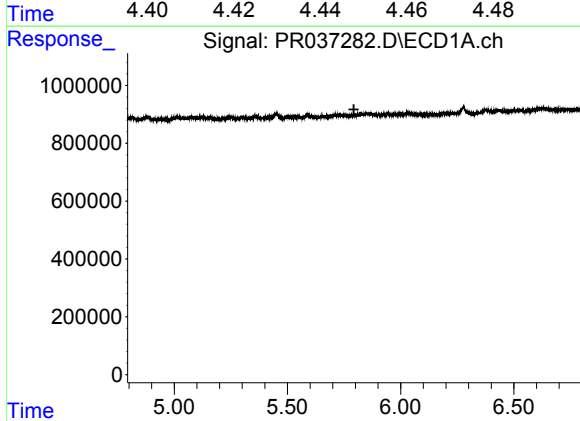
R.T.: 0.000 min
 Exp R.T.: 5.525 min
 Response: 0
 Conc: N.D.

Instrument :
 ECD_R
 ClientSampleId :
 LOD-MDL-SOIL-01-QT1-2019



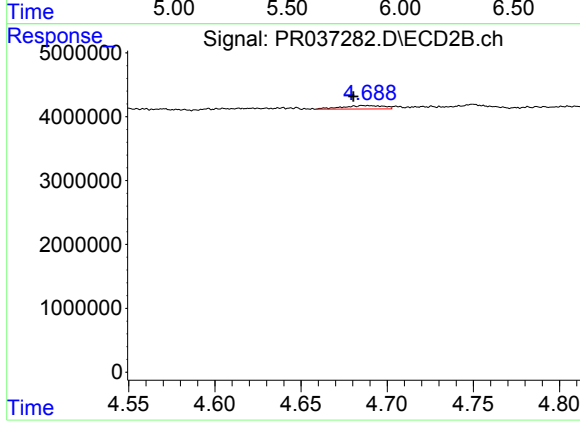
#21 AR-1248-1

R.T.: 4.453 min
 Delta R.T.: 0.002 min
 Response: 184296
 Conc: 1.83 ng/ml



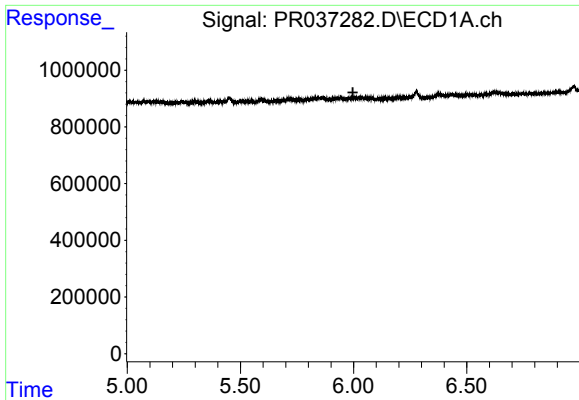
#22 AR-1248-2

R.T.: 0.000 min
 Exp R.T.: 5.793 min
 Response: 0
 Conc: N.D.



#22 AR-1248-2

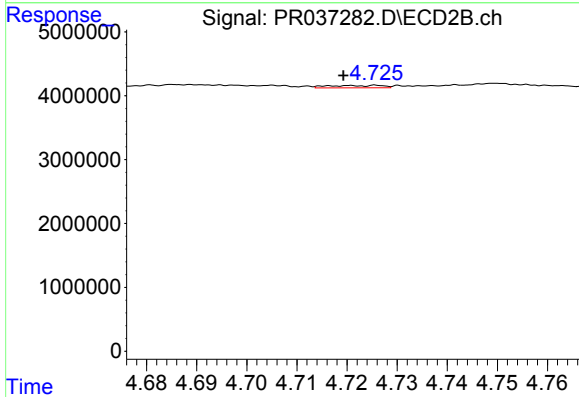
R.T.: 4.685 min
 Delta R.T.: 0.005 min
 Response: 908562
 Conc: 6.66 ng/ml



#23 AR-1248-3

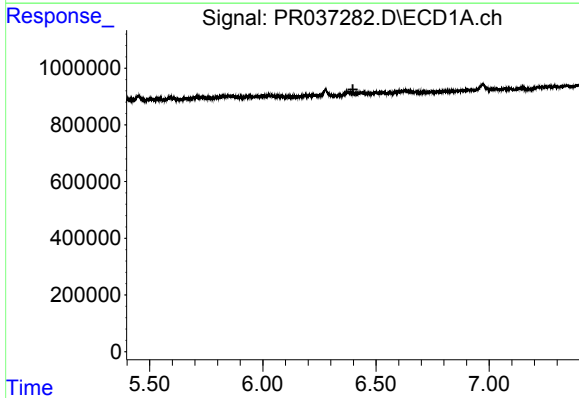
R.T.: 0.000 min
 Exp R.T.: 5.997 min
 Response: 0
 Conc: N.D.

Instrument :
 ECD_R
 ClientSampleId :
 LOD-MDL-SOIL-01-QT1-2019



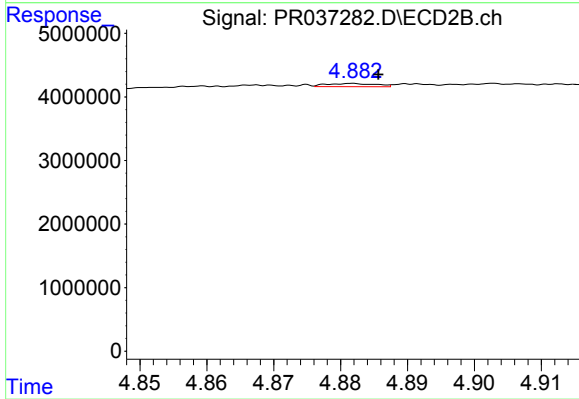
#23 AR-1248-3

R.T.: 4.726 min
 Delta R.T.: 0.007 min
 Response: 282912
 Conc: 2.02 ng/ml



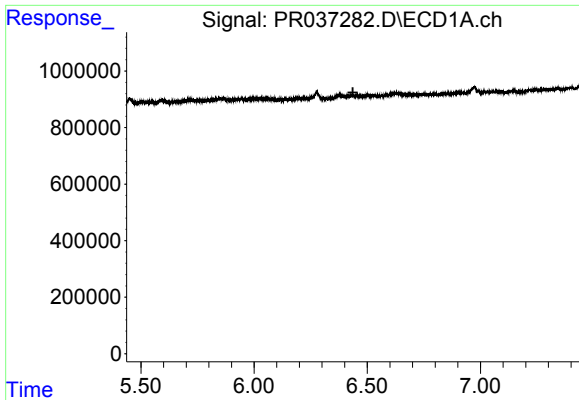
#24 AR-1248-4

R.T.: 0.000 min
 Exp R.T.: 6.398 min
 Response: 0
 Conc: N.D.



#24 AR-1248-4

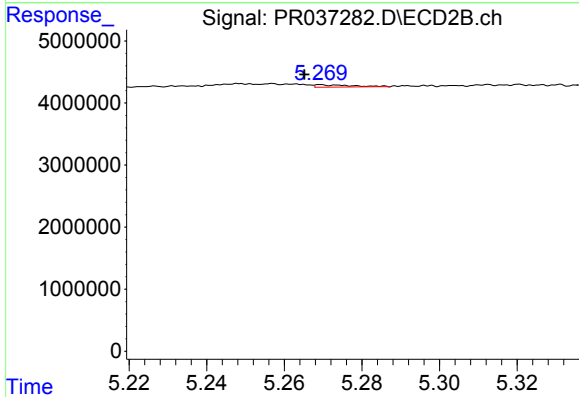
R.T.: 4.882 min
 Delta R.T.: -0.004 min
 Response: 255808
 Conc: 1.44 ng/ml



#25 AR-1248-5

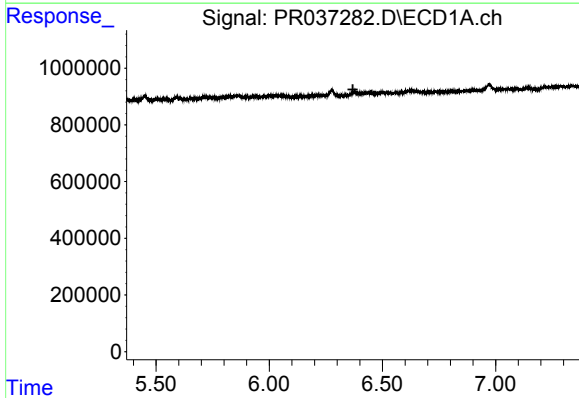
R.T.: 0.000 min
 Exp R.T.: 6.436 min
 Response: 0
 Conc: N.D.

Instrument :
 ECD_R
ClientSampleId :
 LOD-MDL-SOIL-01-QT1-2019



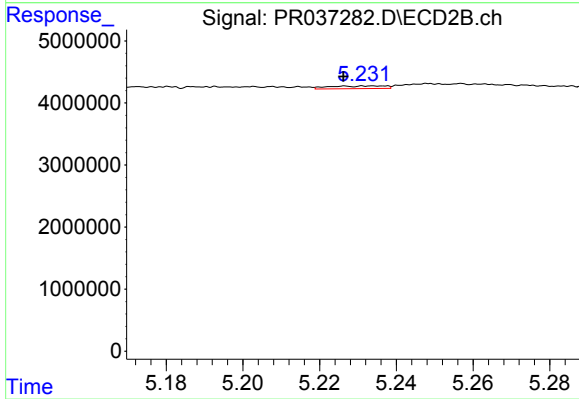
#25 AR-1248-5

R.T.: 5.269 min
 Delta R.T.: 0.004 min
 Response: 256697
 Conc: 1.31 ng/ml



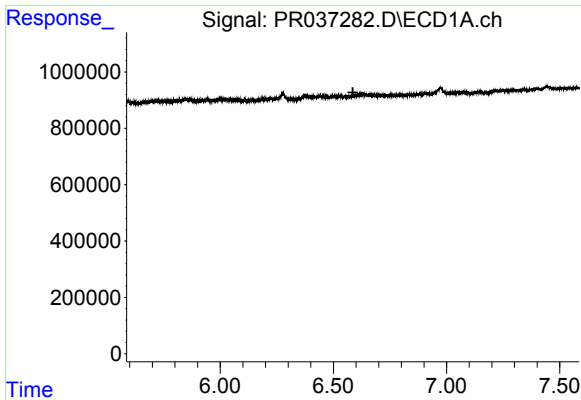
#26 AR-1254-1

R.T.: 0.000 min
 Exp R.T.: 6.369 min
 Response: 0
 Conc: N.D.



#26 AR-1254-1

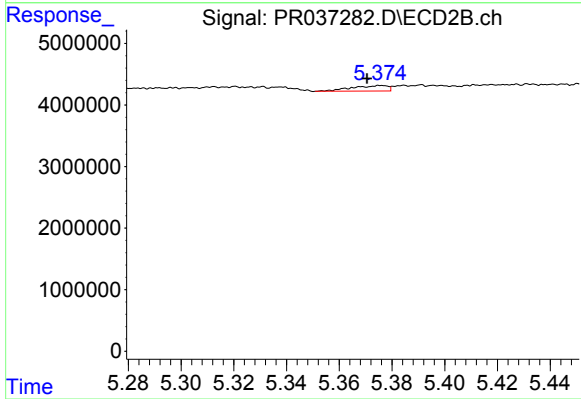
R.T.: 5.227 min
 Delta R.T.: 0.000 min
 Response: 435927
 Conc: 1.27 ng/ml



#27 AR-1254-2

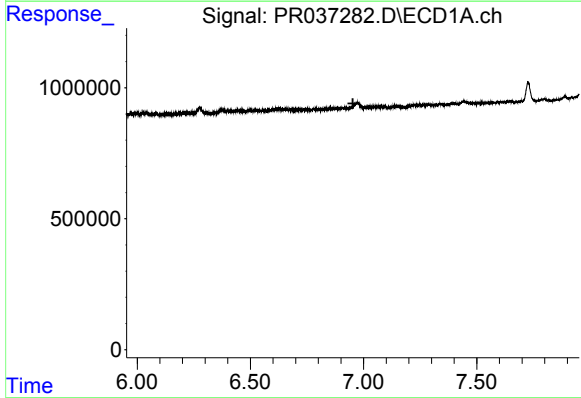
R.T.: 0.000 min
 Exp R.T.: 6.586 min
 Response: 0
 Conc: N.D.

Instrument :
 ECD_R
 ClientSampleId :
 LOD-MDL-SOIL-01-QT1-2019



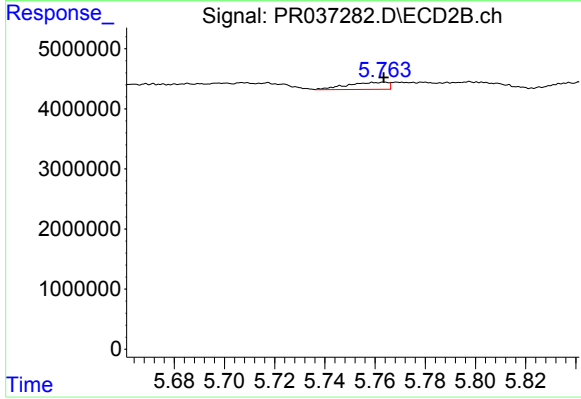
#27 AR-1254-2

R.T.: 5.376 min
 Delta R.T.: 0.005 min
 Response: 832947
 Conc: 2.78 ng/ml



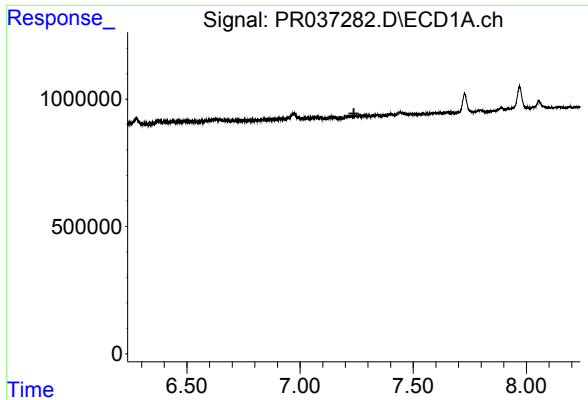
#28 AR-1254-3

R.T.: 0.000 min
 Exp R.T.: 6.953 min
 Response: 0
 Conc: N.D.



#28 AR-1254-3

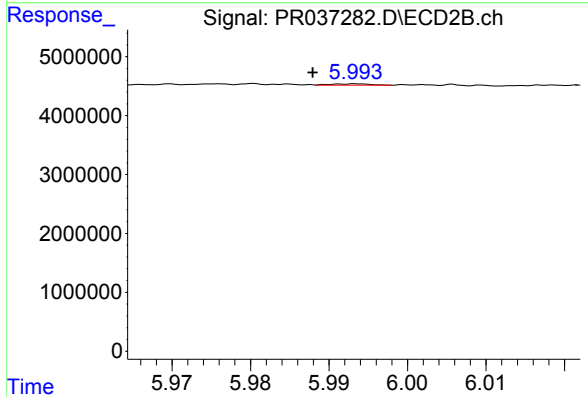
R.T.: 5.764 min
 Delta R.T.: 0.000 min
 Response: 1335360
 Conc: 2.82 ng/ml



#29 AR-1254-4

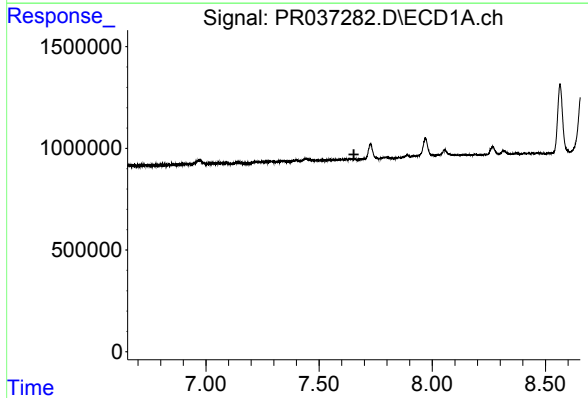
R.T.: 0.000 min
 Exp R.T. : 7.238 min
 Response: 0
 Conc: N.D.

Instrument :
 ECD_R
 ClientSampleId :
 LOD-MDL-SOIL-01-QT1-2019



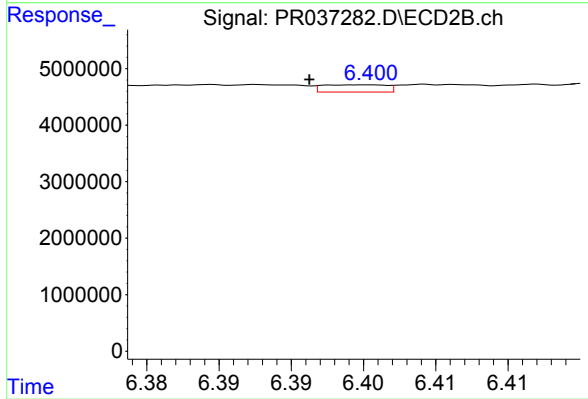
#29 AR-1254-4

R.T.: 5.994 min
 Delta R.T.: 0.006 min
 Response: 80511
 Conc: 0.23 ng/ml



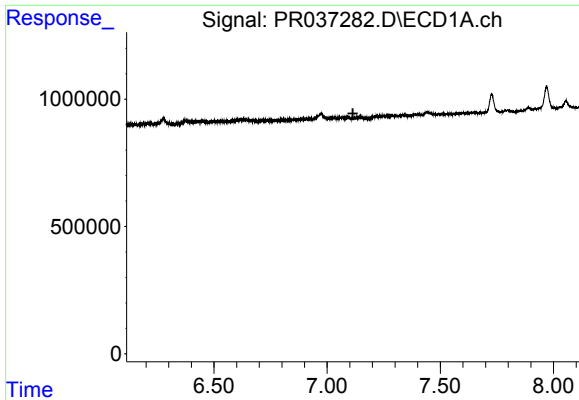
#30 AR-1254-5

R.T.: 0.000 min
 Exp R.T. : 7.654 min
 Response: 0
 Conc: N.D.



#30 AR-1254-5

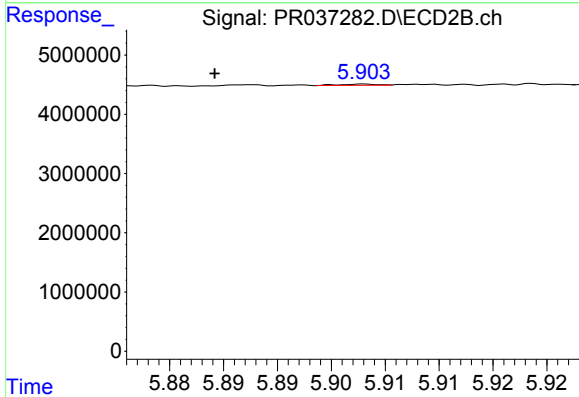
R.T.: 6.400 min
 Delta R.T.: 0.004 min
 Response: 384664
 Conc: 0.87 ng/ml



#31 AR-1260-1

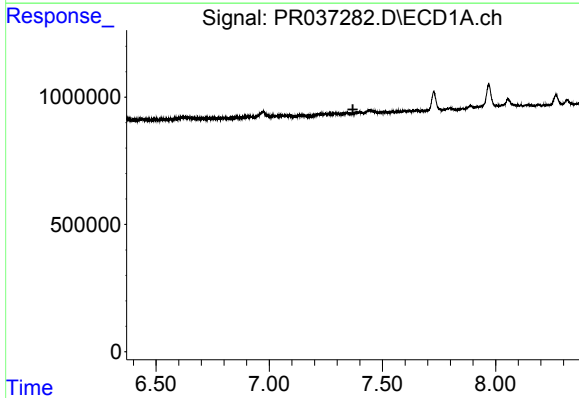
R.T.: 0.000 min
 Exp R.T. : 7.114 min
 Response: 0
 Conc: N.D.

Instrument :
 ECD_R
 ClientSampleId :
 LOD-MDL-SOIL-01-QT1-2019



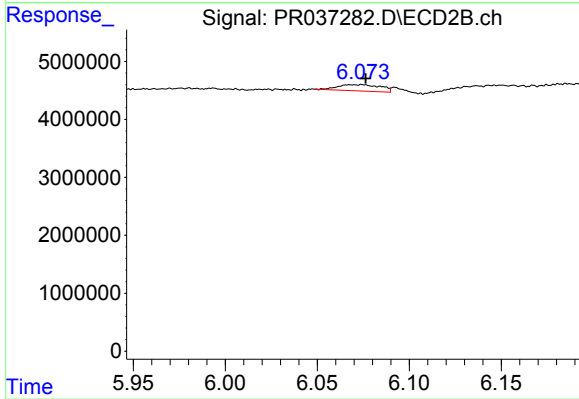
#31 AR-1260-1

R.T.: 5.903 min
 Delta R.T.: 0.014 min
 Response: 51512
 Conc: 0.18 ng/ml



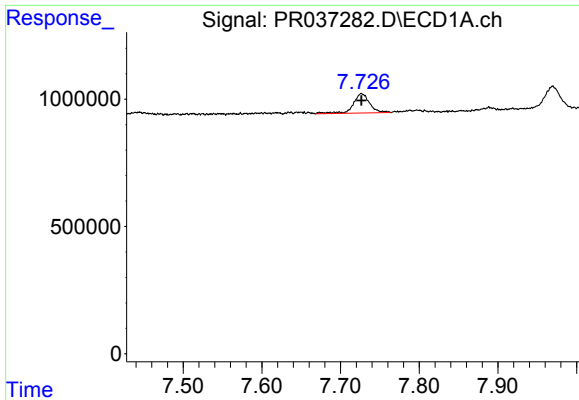
#32 AR-1260-2

R.T.: 0.000 min
 Exp R.T. : 7.369 min
 Response: 0
 Conc: N.D.



#32 AR-1260-2

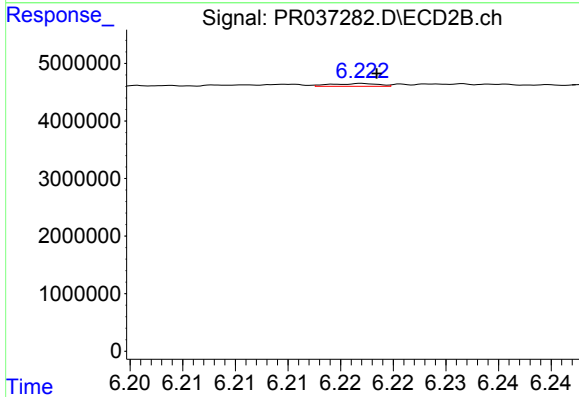
R.T.: 6.074 min
 Delta R.T.: -0.002 min
 Response: 1765223
 Conc: 3.83 ng/ml



#33 AR-1260-3

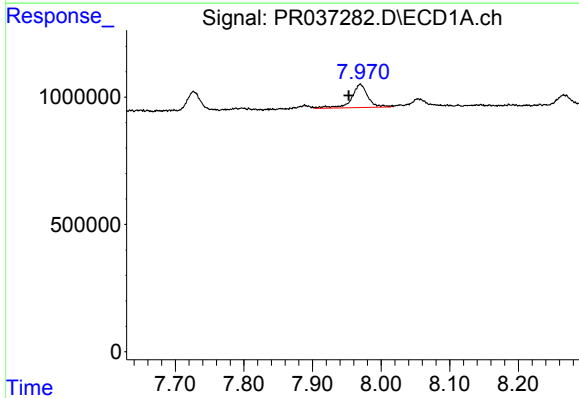
R.T.: 7.727 min
 Delta R.T.: 0.000 min
 Response: 1100367
 Conc: 17.58 ng/ml

Instrument :
 ECD_R
 ClientSampleId :
 LOD-MDL-SOIL-01-QT1-2019



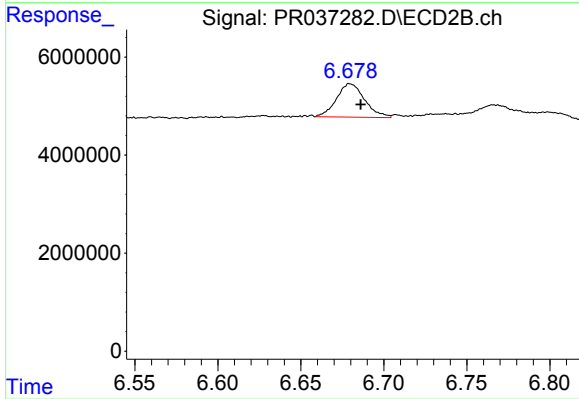
#33 AR-1260-3

R.T.: 6.222 min
 Delta R.T.: -0.001 min
 Response: 148338
 Conc: 0.42 ng/ml



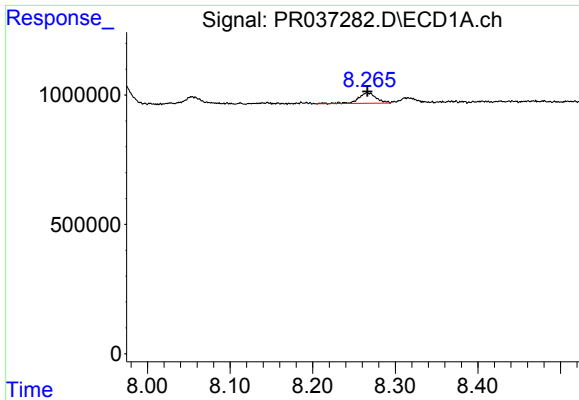
#34 AR-1260-4

R.T.: 7.970 min
 Delta R.T.: 0.017 min
 Response: 1501366
 Conc: 20.18 ng/ml



#34 AR-1260-4

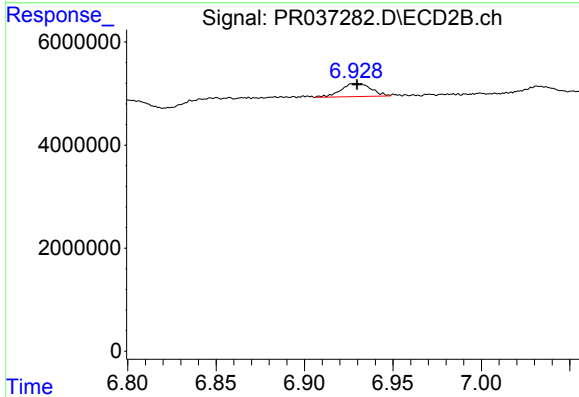
R.T.: 6.679 min
 Delta R.T.: -0.007 min
 Response: 8085351
 Conc: 26.53 ng/ml



#35 AR-1260-5

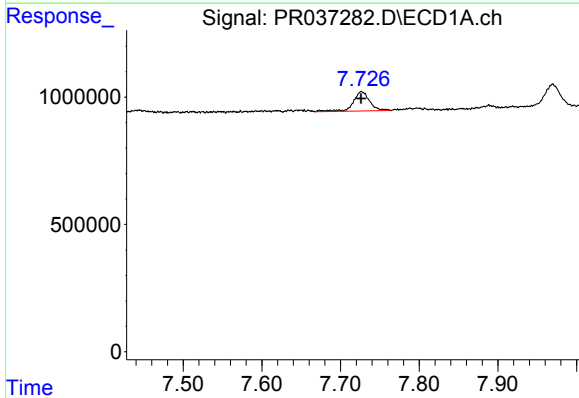
R.T.: 8.266 min
 Delta R.T.: 0.000 min
 Response: 605952
 Conc: 4.19 ng/ml

Instrument :
 ECD_R
 ClientSampleId :
 LOD-MDL-SOIL-01-QT1-2019



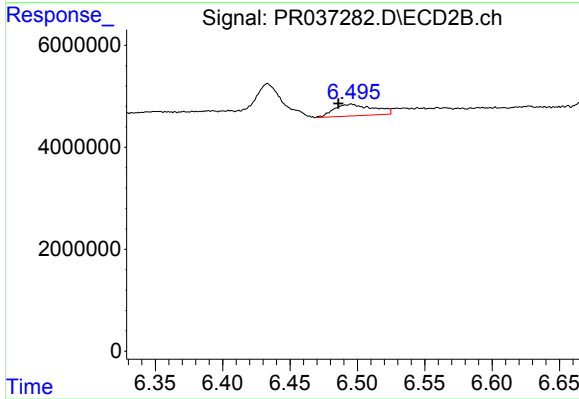
#35 AR-1260-5

R.T.: 6.930 min
 Delta R.T.: 0.000 min
 Response: 3010114
 Conc: 3.47 ng/ml



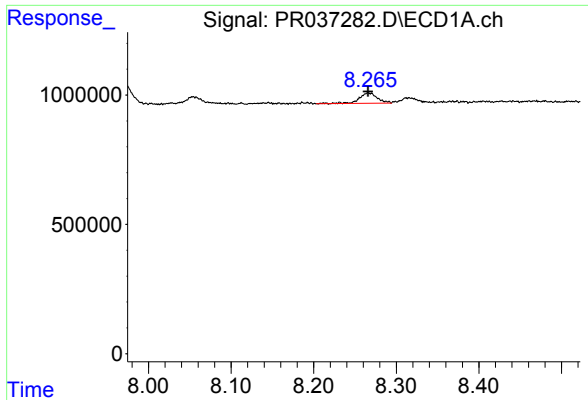
#36 AR-1262-1

R.T.: 7.727 min
 Delta R.T.: 0.000 min
 Response: 1100367
 Conc: 10.53 ng/ml



#36 AR-1262-1

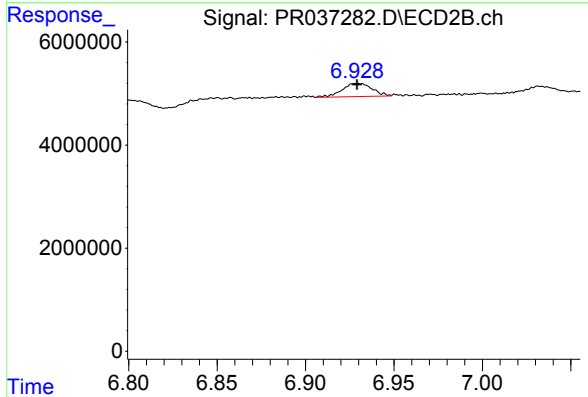
R.T.: 6.495 min
 Delta R.T.: 0.009 min
 Response: 4659345
 Conc: 18.59 ng/ml



#37 AR-1262-2

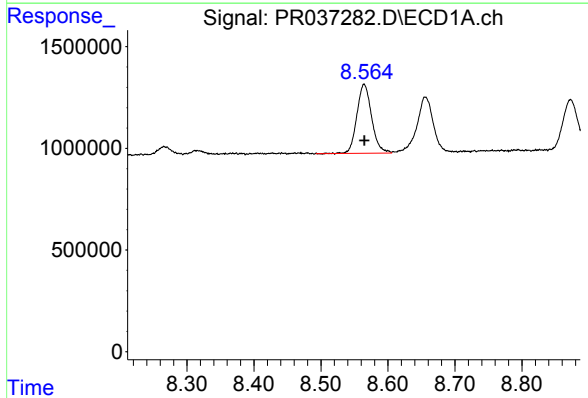
R.T.: 8.266 min
 Delta R.T.: 0.000 min
 Response: 605952
 Conc: 3.12 ng/ml

Instrument :
 ECD_R
 ClientSampleId :
 LOD-MDL-SOIL-01-QT1-2019



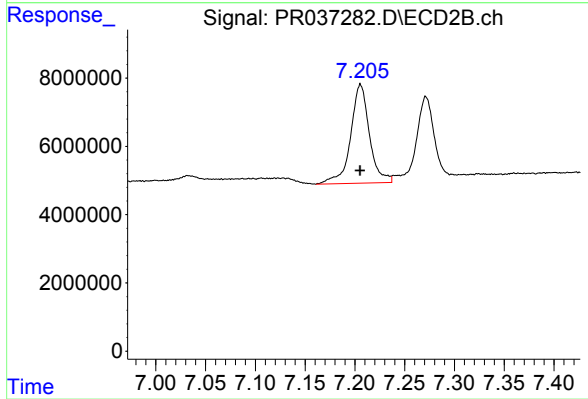
#37 AR-1262-2

R.T.: 6.930 min
 Delta R.T.: 0.001 min
 Response: 3010114
 Conc: 2.40 ng/ml



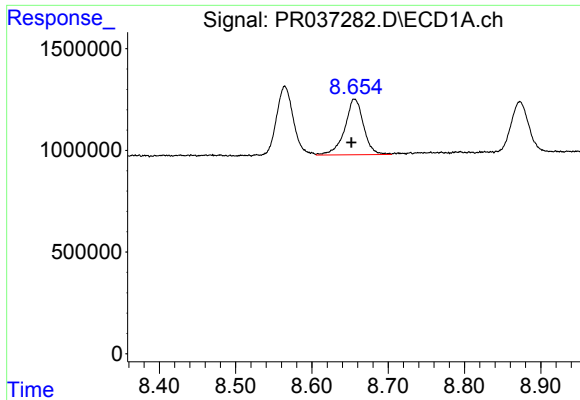
#38 AR-1262-3

R.T.: 8.564 min
 Delta R.T.: 0.000 min
 Response: 5176475
 Conc: 39.36 ng/ml



#38 AR-1262-3

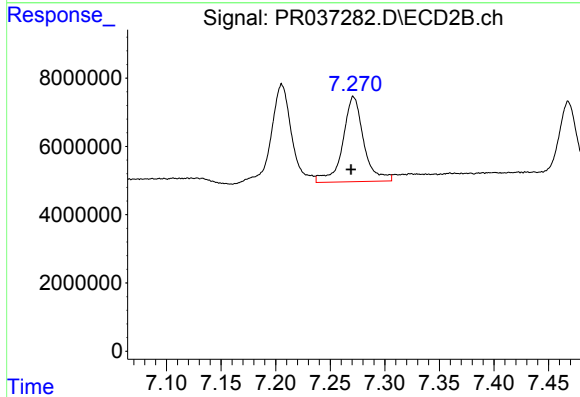
R.T.: 7.206 min
 Delta R.T.: 0.000 min
 Response: 38068863
 Conc: 69.44 ng/ml



#39 AR-1262-4

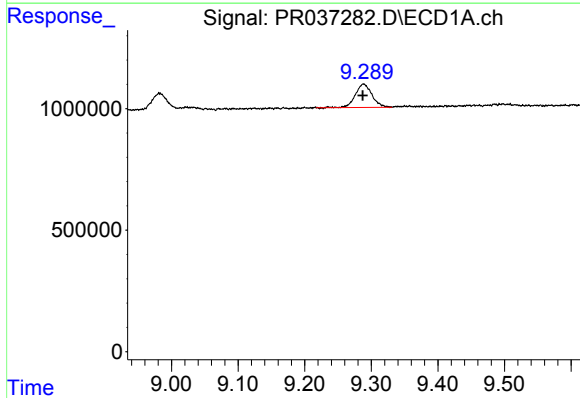
R.T.: 8.656 min
 Delta R.T.: 0.004 min
 Response: 4668332
 Conc: 47.52 ng/ml

Instrument :
 ECD_R
 ClientSampleId :
 LOD-MDL-SOIL-01-QT1-2019



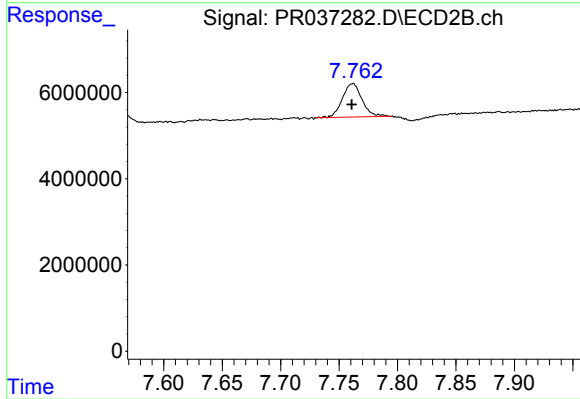
#39 AR-1262-4

R.T.: 7.271 min
 Delta R.T.: 0.002 min
 Response: 33344188
 Conc: 37.15 ng/ml



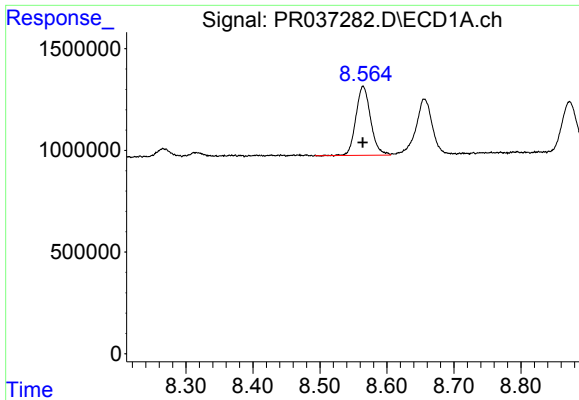
#40 AR-1262-5

R.T.: 9.288 min
 Delta R.T.: 0.000 min
 Response: 1662710
 Conc: 24.08 ng/ml



#40 AR-1262-5

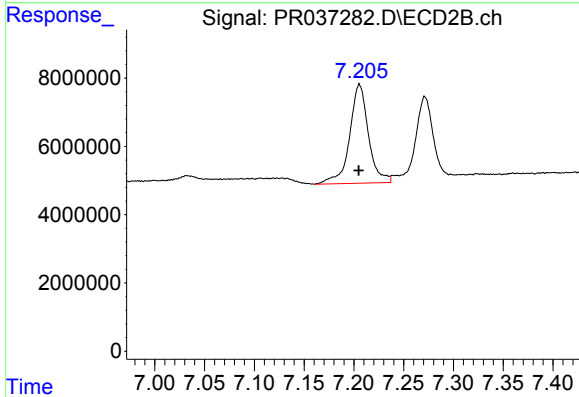
R.T.: 7.762 min
 Delta R.T.: 0.000 min
 Response: 9086951
 Conc: 23.75 ng/ml



#41 AR-1268-1

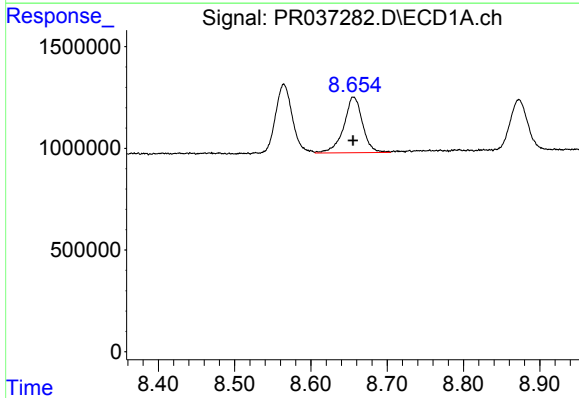
R.T.: 8.564 min
 Delta R.T.: 0.000 min
 Response: 5176475
 Conc: 28.90 ng/ml

Instrument :
 ECD_R
 ClientSampleId :
 LOD-MDL-SOIL-01-QT1-2019



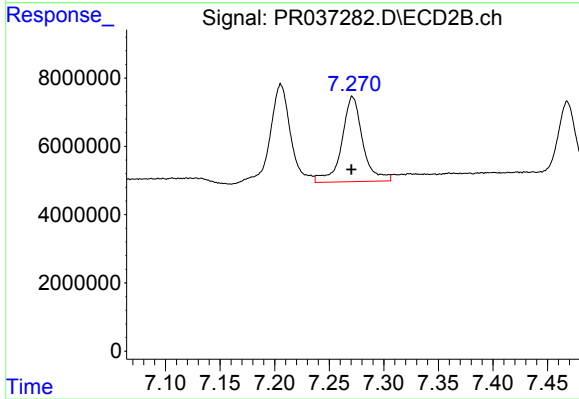
#41 AR-1268-1

R.T.: 7.206 min
 Delta R.T.: 0.000 min
 Response: 38068863
 Conc: 30.92 ng/ml



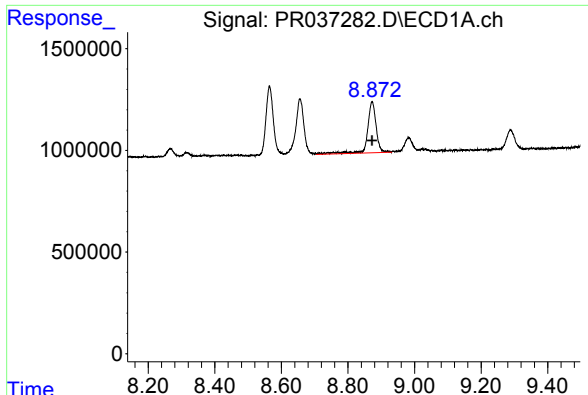
#42 AR-1268-2

R.T.: 8.656 min
 Delta R.T.: 0.000 min
 Response: 4668332
 Conc: 28.38 ng/ml



#42 AR-1268-2

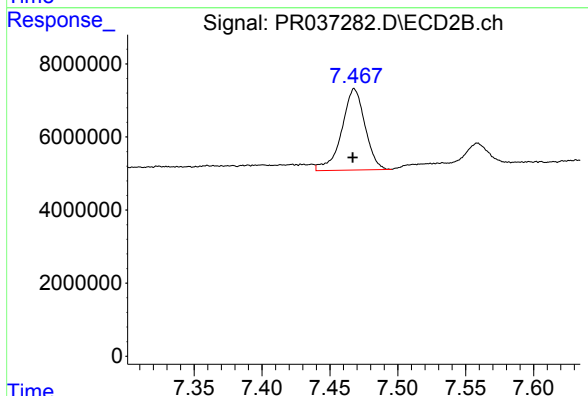
R.T.: 7.271 min
 Delta R.T.: 0.000 min
 Response: 33344188
 Conc: 31.49 ng/ml



#43 AR-1268-3

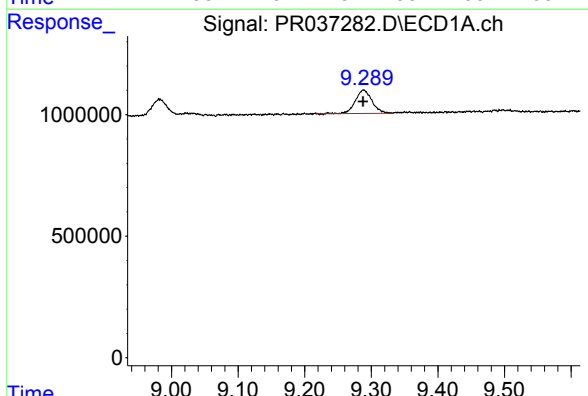
R.T.: 8.873 min
 Delta R.T.: 0.000 min
 Response: 4529968
 Conc: 32.72 ng/ml

Instrument :
 ECD_R
 ClientSampleId :
 LOD-MDL-SOIL-01-QT1-2019



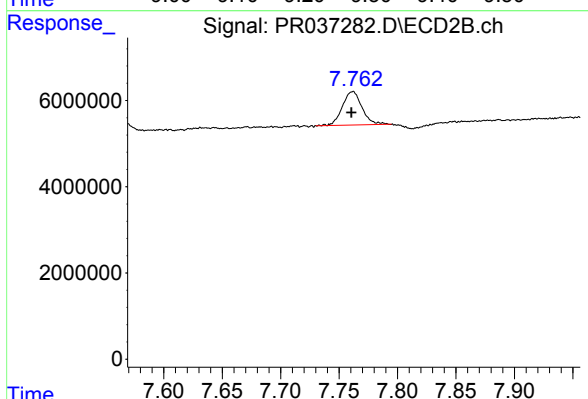
#43 AR-1268-3

R.T.: 7.468 min
 Delta R.T.: 0.001 min
 Response: 26468601
 Conc: 29.87 ng/ml



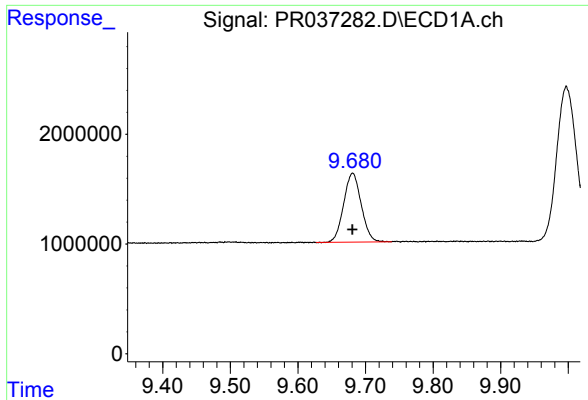
#44 AR-1268-4

R.T.: 9.288 min
 Delta R.T.: 0.000 min
 Response: 1662710
 Conc: 26.65 ng/ml



#44 AR-1268-4

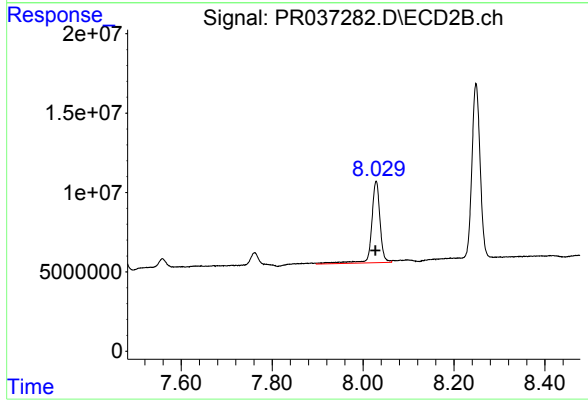
R.T.: 7.762 min
 Delta R.T.: 0.001 min
 Response: 9086951
 Conc: 25.05 ng/ml



#45 AR-1268-5

R.T.: 9.681 min
Delta R.T.: 0.000 min
Response: 11369417
Conc: 24.94 ng/ml

Instrument :
ECD_R
ClientSampleId :
LOD-MDL-SOIL-01-QT1-2019



#45 AR-1268-5

R.T.: 8.029 min
Delta R.T.: 0.002 min
Response: 66515774
Conc: 26.14 ng/ml