

Data Path : Z:\pestpcbsrv\HPCHEM1\ECD\_R\Data\PR042519\  
 Data File : PR037378.D  
 Signal(s) : Signal #1: ECD1A.ch Signal #2: ECD2B.ch  
 Acq On : 25 Apr 2019 08:42  
 Operator : SM\SJ  
 Sample : K2508-11  
 Misc :  
 ALS Vial : 5 Sample Multiplier: 1

Instrument :  
 ECD\_R  
 ClientSampleId :  
 OIL-220-3

Integration File signal 1: autoint1.e  
 Integration File signal 2: autoint2.e  
 Quant Time: Apr 25 09:38:26 2019  
 Quant Method : Z:\pestpcbsrv\HPCHEM1\ECD\_R\Method\PR042219.M  
 Quant Title : GC EXTRACTABLES  
 QLast Update : Mon Apr 22 17:27:39 2019  
 Response via : Initial Calibration  
 Integrator: ChemStation

Volume Inj. : 2 µl  
 Signal #1 Phase : ZB-MR1 Signal #2 Phase: ZB-MR2  
 Signal #1 Info : 30Mx0.32mmx 0.50µ Signal #2 Info : 30M x 0.32mm x 0.25µm

Compound	RT#1	RT#2	Resp#1	Resp#2	ng/ml	ng/ml
System Monitoring Compounds						
1) SA Tetrachlo...	4.383	3.447	27121911	110.8E6	21.680	23.103
2) SA Decachlor...	9.988	8.245	25533155	96980945	19.306	16.651
Target Compounds						
3) L1 AR-1016-1	5.466	4.454	423089	19895366	9.819	109.267 #
4) L1 AR-1016-2	5.607	4.454	450756	19895366	6.509	70.520 #
5) L1 AR-1016-3	5.607	4.646	450756	12183172	11.177	84.733 #
6) L1 AR-1016-4	0.000	4.703	0	2194976	N.D.	19.840 #
7) L1 AR-1016-5	0.000	4.896	0	3386663	N.D.	22.279 #
8) L2 AR-1221-1	0.000	3.634	0	983126	N.D.	19.308 #
9) L2 AR-1221-2	4.686	3.724	469735	12258681	51.939	330.104 #
10) L2 AR-1221-3	4.738	3.724	13911208	12258681	453.886	100.113 #
11) L3 AR-1232-1	4.738	3.724	13911208	12258681	475.581	104.783 #
12) L3 AR-1232-2	0.000	4.454	0	19895366	N.D.	143.935 #
13) L3 AR-1232-3	5.607	4.646	450756	12183172	13.334	173.545 #
14) L3 AR-1232-4	0.000	4.712	0	406714	N.D.	6.816 #
15) L3 AR-1232-5	5.834	4.896	432231	3386663	36.957	49.626 #
16) L4 AR-1242-1	5.466	4.454	423089	19895366	12.366	135.769 #
17) L4 AR-1242-2	5.607	4.454	450756	19895366	8.126	87.199 #
18) L4 AR-1242-3	5.607	4.646	450756	12183172	13.695	105.364 #
19) L4 AR-1242-4	0.000	4.712	0	406714	N.D.	3.700 #
20) L4 AR-1242-5	6.431	5.205	3439870	6281513	106.899	37.909 #
21) L5 AR-1248-1	5.466	4.454	423089	19895366	18.470	197.641 #
22) L5 AR-1248-2	5.834	4.703	432231	2194976	12.344	16.083 #
23) L5 AR-1248-3	0.000	4.712	0	406714	N.D.	2.906 #
24) L5 AR-1248-4	6.418	4.896	12770894	3386663	260.874	19.030 #
25) L5 AR-1248-5	6.431	5.257	3439870	10891035	72.821	55.677
26) L6 AR-1254-1	6.418	5.205	12770894	6281513	233.767	18.235 #
27) L6 AR-1254-2	0.000	5.380	0	417.1E6	N.D.	1392.721 #
28) L6 AR-1254-3	0.000	5.787	0	7591188	N.D.	16.028 #
29) L6 AR-1254-4	0.000	5.955	0	5823691	N.D.	16.608 #
30) L6 AR-1254-5	7.589	6.397	1489016	6465169	20.715	14.600 #
31) L7 AR-1260-1	7.045	5.885	551625	1670331	8.360	5.715 #
32) L7 AR-1260-2	7.334	6.078	650052	-728848	8.156	N.D. #
33) L7 AR-1260-3	7.731	6.227	2139744	11273858	34.195	31.624
34) L7 AR-1260-4	0.000	6.722	0	1165029	N.D.	3.823 #
35) L7 AR-1260-5	8.289	6.932	2014691	1858855	13.931	2.143 #
36) L8 AR-1262-1	7.731	6.499	2139744	85460682	20.485	340.997 #
37) L8 AR-1262-2	8.289	6.932	2014691	1858855	10.364	1.480 #
38) L8 AR-1262-3	8.560	7.194	211985	463474	1.612	0.845 #
39) L8 AR-1262-4	0.000	7.285	0	624059	N.D.	0.695 #
40) L8 AR-1262-5	0.000	7.762	0	109.2E6	N.D.	285.316 #
41) L9 AR-1268-1	8.560	7.194	211985	463474	1.184	0.376 #

Data Path : Z:\pestpcbsrv\HPCHEM1\ECD\_R\Data\PR042519\  
 Data File : PR037378.D  
 Signal(s) : Signal #1: ECD1A.ch Signal #2: ECD2B.ch  
 Acq On : 25 Apr 2019 08:42  
 Operator : SM\SJ  
 Sample : K2508-11  
 Misc :  
 ALS Vial : 5 Sample Multiplier: 1

Instrument :  
 ECD\_R  
 ClientSampleId :  
 OIL-220-3

Integration File signal 1: autoint1.e  
 Integration File signal 2: autoint2.e  
 Quant Time: Apr 25 09:38:26 2019  
 Quant Method : Z:\pestpcbsrv\HPCHEM1\ECD\_R\Method\PR042219.M  
 Quant Title : GC EXTRACTABLES  
 QLast Update : Mon Apr 22 17:27:39 2019  
 Response via : Initial Calibration  
 Integrator: ChemStation

Volume Inj. : 2 µl  
 Signal #1 Phase : ZB-MR1 Signal #2 Phase: ZB-MR2  
 Signal #1 Info : 30Mx0.32mmx 0.50µ Signal #2 Info : 30M x 0.32mm x 0.25µm

	Compound	RT#1	RT#2	Resp#1	Resp#2	ng/ml	ng/ml
42)	L9 AR-1268-2	0.000	7.285	0	624059	N.D.	0.589 #
43)	L9 AR-1268-3	0.000	7.473	0	816502	N.D.	0.921 #
44)	L9 AR-1268-4	0.000	7.762	0	109.2E6	N.D.	300.916 #
45)	L9 AR-1268-5	9.674	8.028	53661	756211	0.118	0.297 #

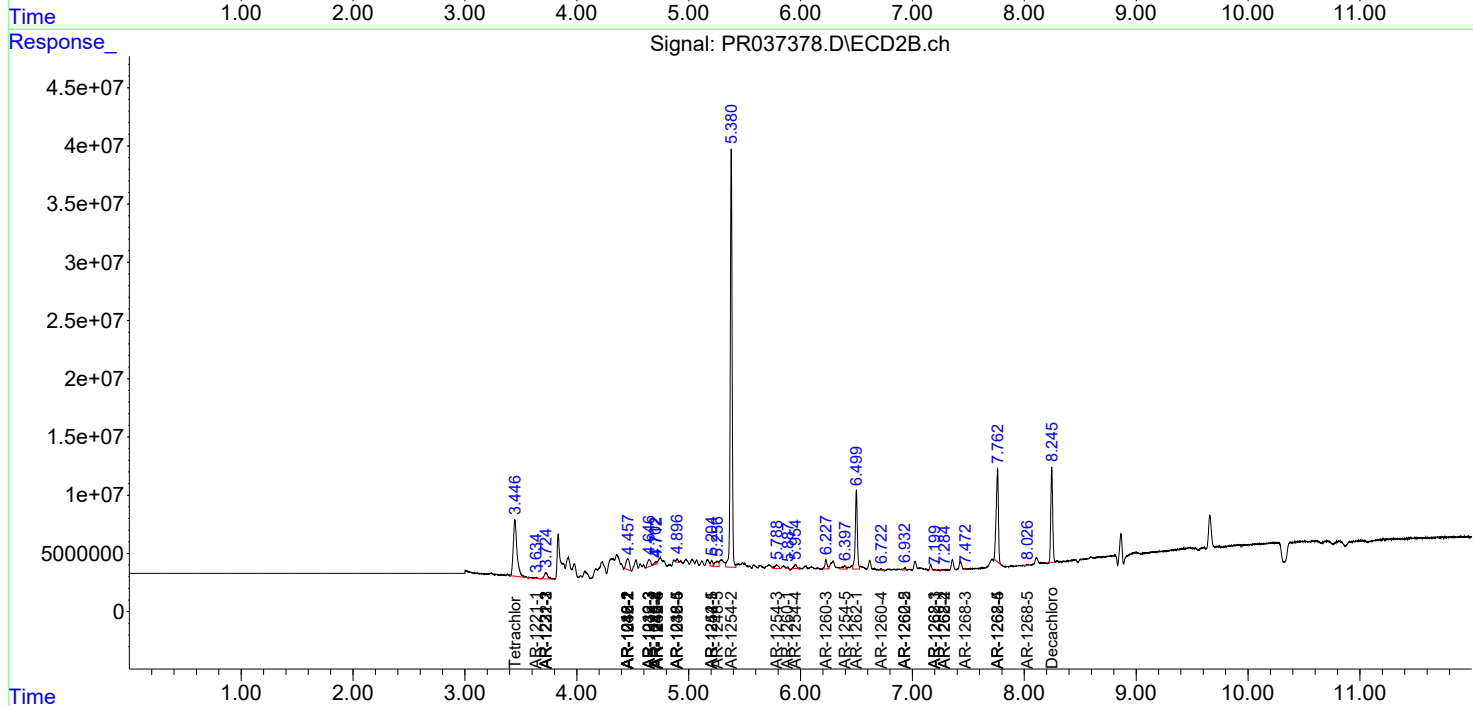
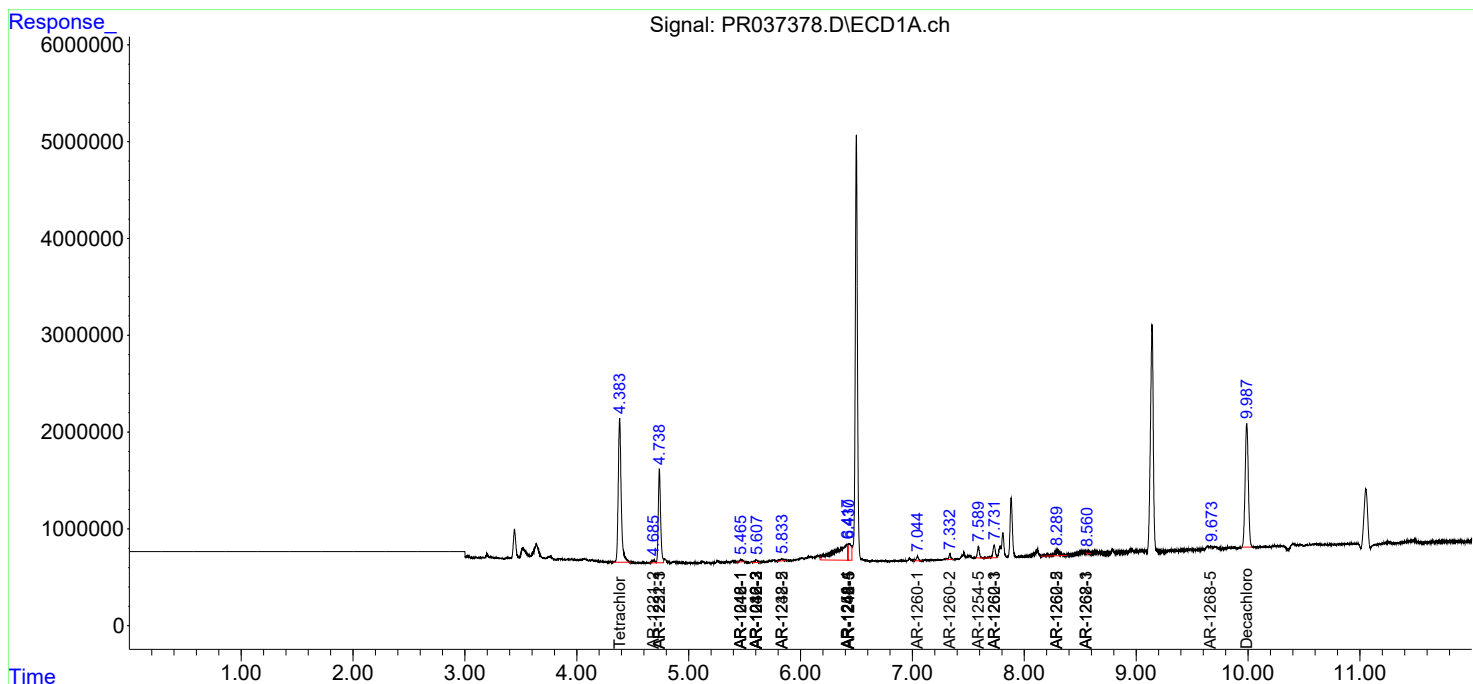
(f)=RT Delta > 1/2 Window (#)=Amounts differ by > 25% (m)=manual int.

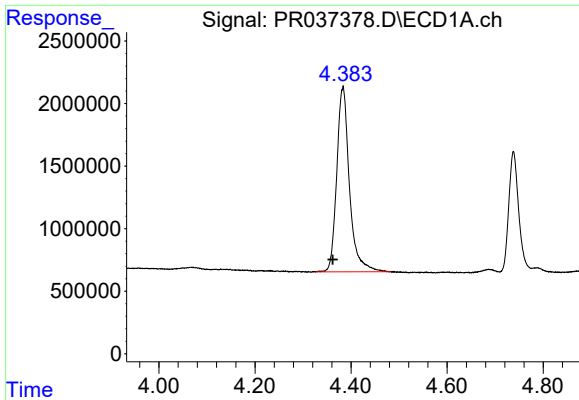
Data Path : Z:\pestpcbsrv\HPCHEM1\ECD\_R\Data\PR042519\  
 Data File : PR037378.D  
 Signal(s) : Signal #1: ECD1A.ch Signal #2: ECD2B.ch  
 Acq On : 25 Apr 2019 08:42  
 Operator : SM\SJ  
 Sample : K2508-11  
 Misc :  
 ALS Vial : 5 Sample Multiplier: 1

Instrument :  
 ECD\_R  
 ClientSampled :  
 OIL-220-3

Integration File signal 1: autoint1.e  
 Integration File signal 2: autoint2.e  
 Quant Time: Apr 25 09:38:26 2019  
 Quant Method : Z:\pestpcbsrv\HPCHEM1\ECD\_R\Method\PR042219.M  
 Quant Title : GC EXTRACTABLES  
 QLast Update : Mon Apr 22 17:27:39 2019  
 Response via : Initial Calibration  
 Integrator: ChemStation

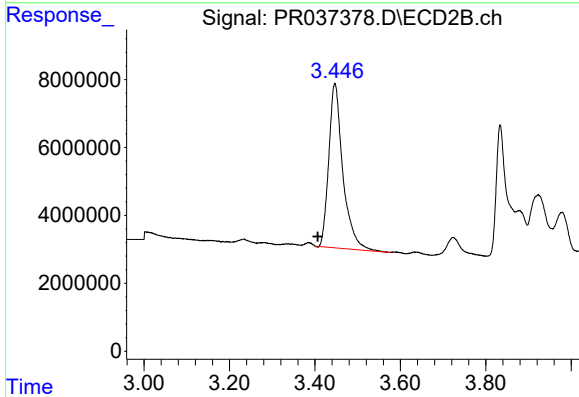
Volume Inj. : 2 µl  
 Signal #1 Phase : ZB-MR1 Signal #2 Phase: ZB-MR2  
 Signal #1 Info : 30Mx0.32mmx 0.50µ Signal #2 Info : 30M x 0.32mm x 0.25µm



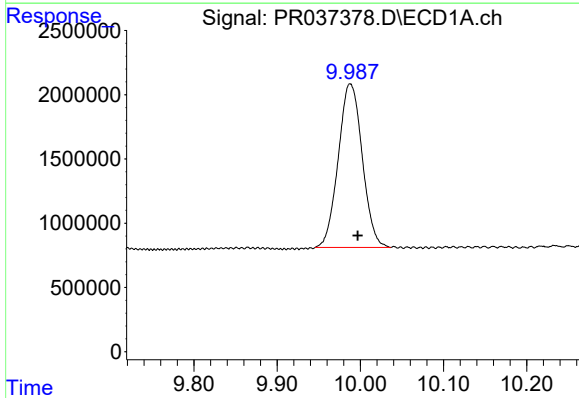


#1 Tetrachloro-m-xylene  
 R.T.: 4.383 min  
 Delta R.T.: 0.021 min  
 Response: 27121911  
 Conc: 21.68 ng/ml

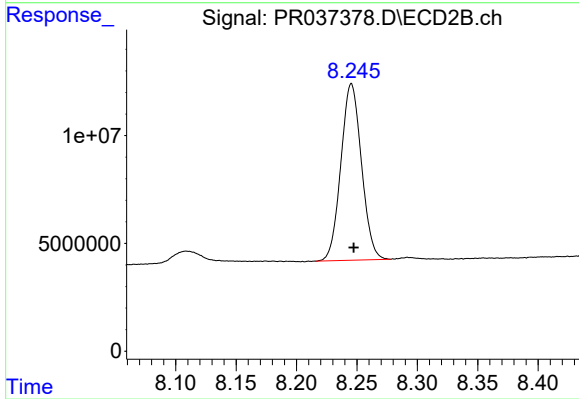
Instrument :  
 ECD\_R  
 ClientSampleId :  
 OIL-220-3



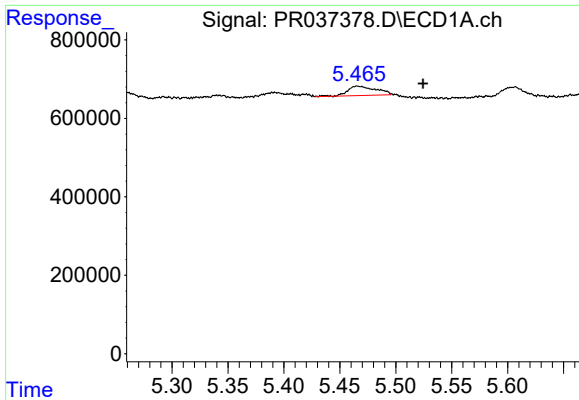
#1 Tetrachloro-m-xylene  
 R.T.: 3.447 min  
 Delta R.T.: 0.040 min  
 Response: 110791836  
 Conc: 23.10 ng/ml



#2 Decachlorobiphenyl  
 R.T.: 9.988 min  
 Delta R.T.: -0.009 min  
 Response: 25533155  
 Conc: 19.31 ng/ml



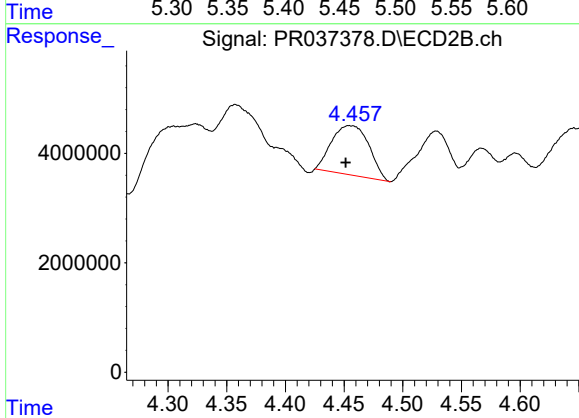
#2 Decachlorobiphenyl  
 R.T.: 8.245 min  
 Delta R.T.: -0.002 min  
 Response: 96980945  
 Conc: 16.65 ng/ml



#3 AR-1016-1

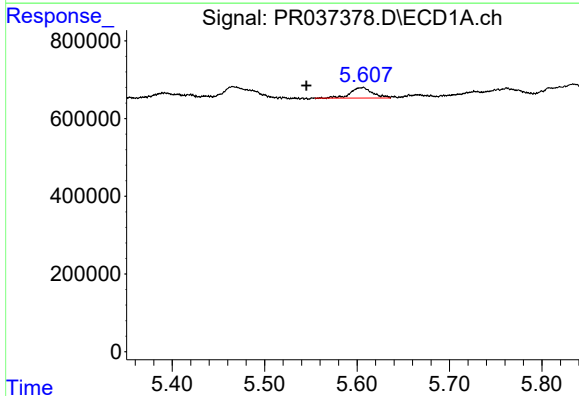
R.T.: 5.466 min  
 Delta R.T.: -0.059 min  
 Response: 423089  
 Conc: 9.82 ng/ml

Instrument :  
 ECD\_R  
 ClientSampleId :  
 OIL-220-3



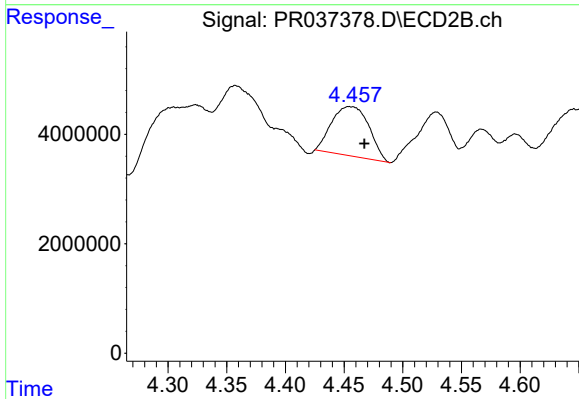
#3 AR-1016-1

R.T.: 4.454 min  
 Delta R.T.: 0.003 min  
 Response: 19895366  
 Conc: 109.27 ng/ml



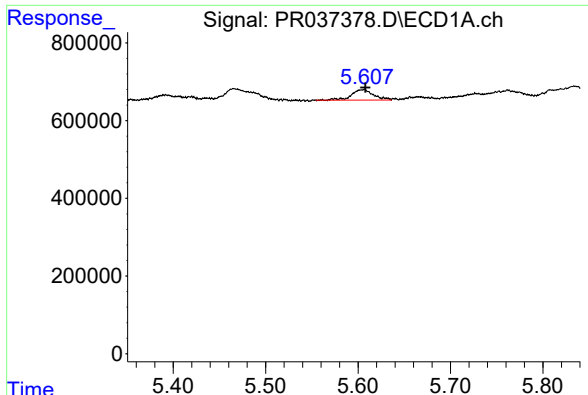
#4 AR-1016-2

R.T.: 5.607 min  
 Delta R.T.: 0.062 min  
 Response: 450756  
 Conc: 6.51 ng/ml



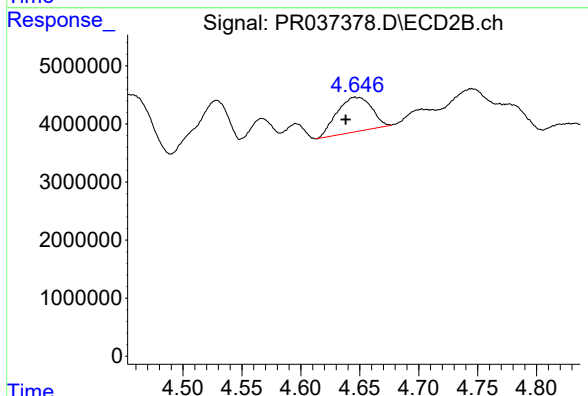
#4 AR-1016-2

R.T.: 4.454 min  
 Delta R.T.: -0.013 min  
 Response: 19895366  
 Conc: 70.52 ng/ml

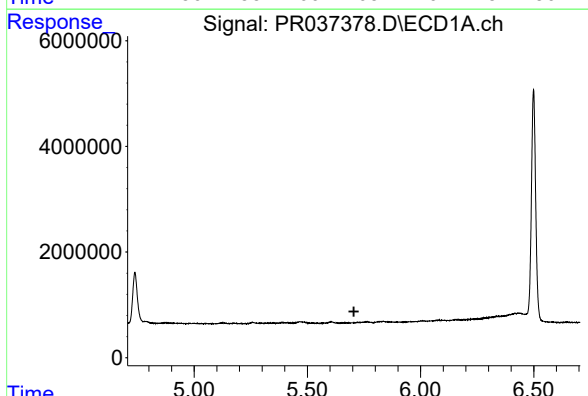


#5 AR-1016-3  
 R.T.: 5.607 min  
 Delta R.T.: -0.001 min  
 Response: 450756  
 Conc: 11.18 ng/ml

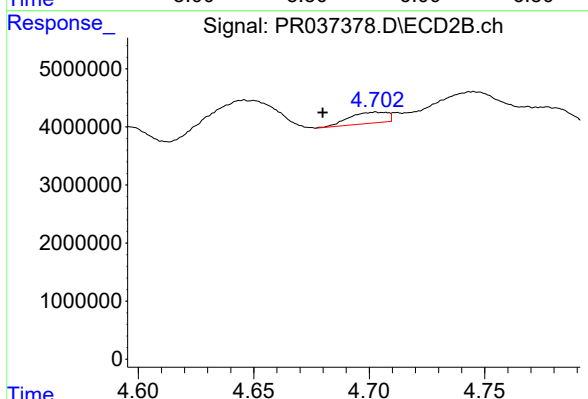
Instrument :  
 ECD\_R  
 ClientSampleId :  
 OIL-220-3



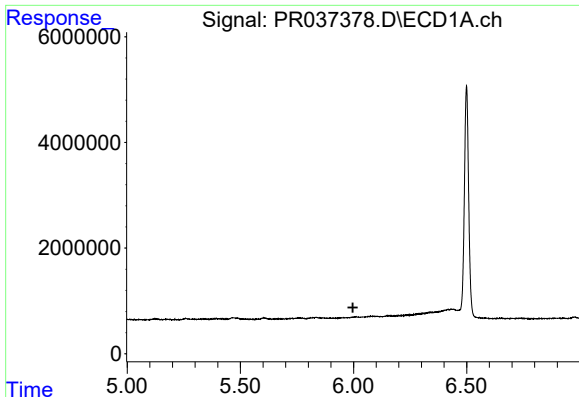
#5 AR-1016-3  
 R.T.: 4.646 min  
 Delta R.T.: 0.008 min  
 Response: 12183172  
 Conc: 84.73 ng/ml



#6 AR-1016-4  
 R.T.: 0.000 min  
 Exp R.T. : 5.705 min  
 Response: 0  
 Conc: N.D.



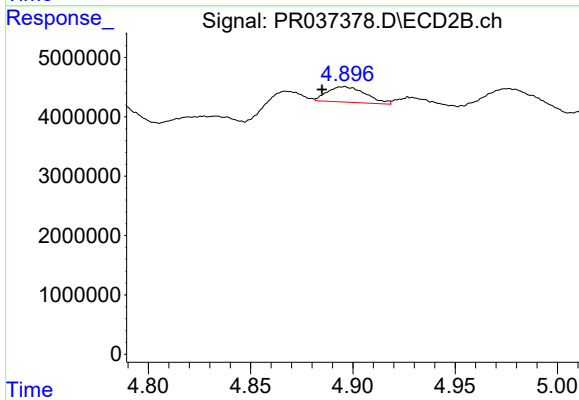
#6 AR-1016-4  
 R.T.: 4.703 min  
 Delta R.T.: 0.023 min  
 Response: 2194976  
 Conc: 19.84 ng/ml



#7 AR-1016-5

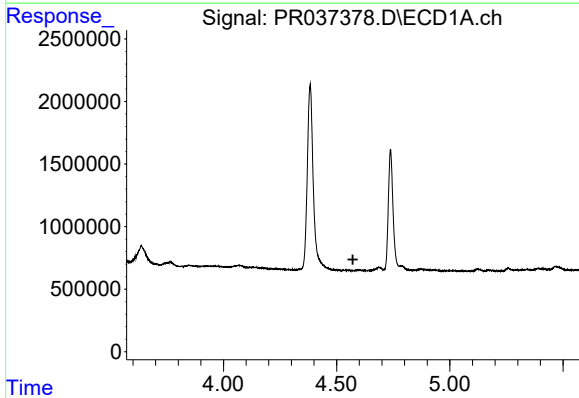
R.T.: 0.000 min  
 Exp R.T.: 5.997 min  
 Response: 0  
 Conc: N.D.

Instrument :  
 ECD\_R  
 ClientSampleId :  
 OIL-220-3



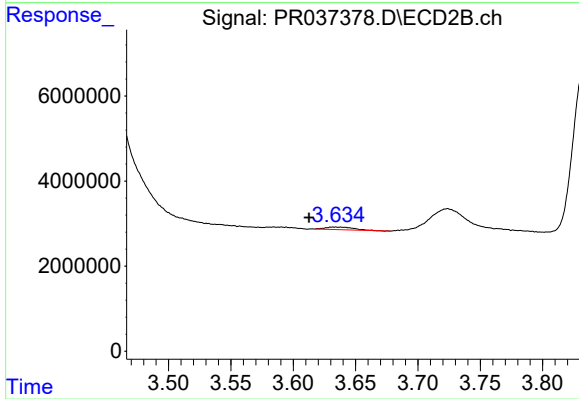
#7 AR-1016-5

R.T.: 4.896 min  
 Delta R.T.: 0.011 min  
 Response: 3386663  
 Conc: 22.28 ng/ml



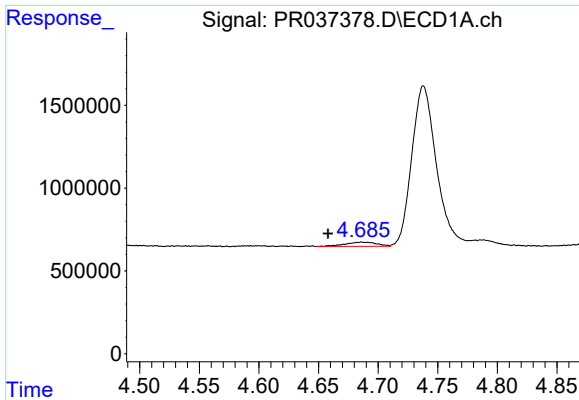
#8 AR-1221-1

R.T.: 0.000 min  
 Exp R.T.: 4.572 min  
 Response: 0  
 Conc: N.D.



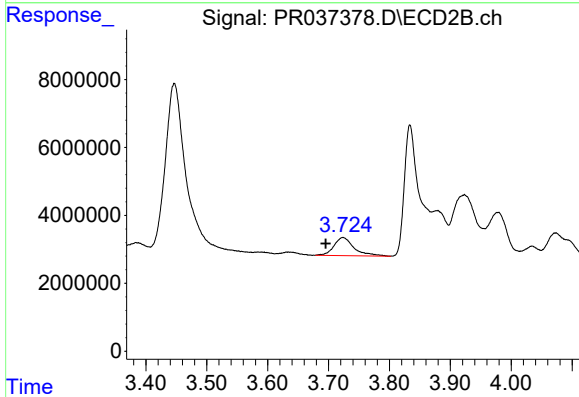
#8 AR-1221-1

R.T.: 3.634 min  
 Delta R.T.: 0.022 min  
 Response: 983126  
 Conc: 19.31 ng/ml

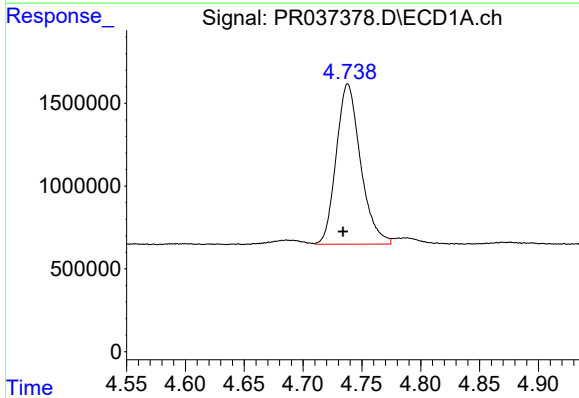


#9 AR-1221-2  
 R.T.: 4.686 min  
 Delta R.T.: 0.028 min  
 Response: 469735  
 Conc: 51.94 ng/ml

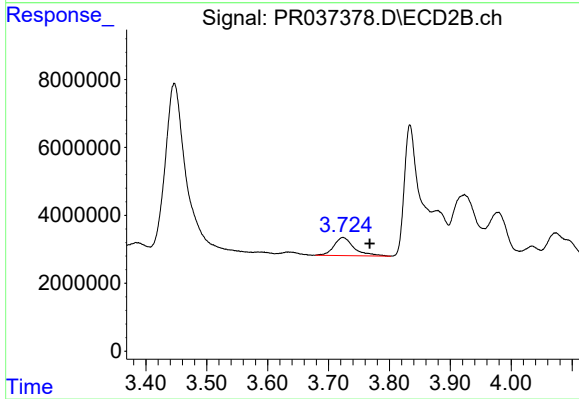
**Instrument :**  
 ECD\_R  
**ClientSampled :**  
 OIL-220-3



#9 AR-1221-2  
 R.T.: 3.724 min  
 Delta R.T.: 0.028 min  
 Response: 12258681  
 Conc: 330.10 ng/ml

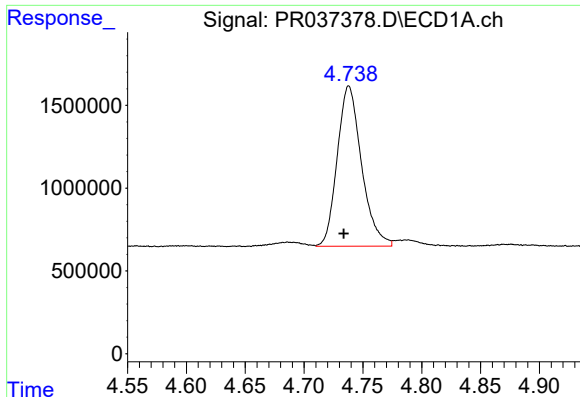


#10 AR-1221-3  
 R.T.: 4.738 min  
 Delta R.T.: 0.004 min  
 Response: 13911208  
 Conc: 453.89 ng/ml



#10 AR-1221-3  
 R.T.: 3.724 min  
 Delta R.T.: -0.044 min  
 Response: 12258681  
 Conc: 100.11 ng/ml

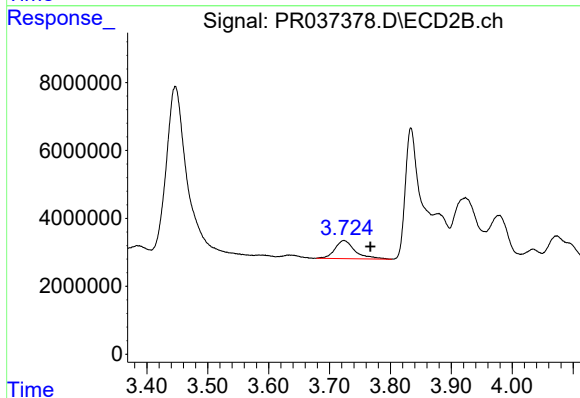




#11 AR-1232-1

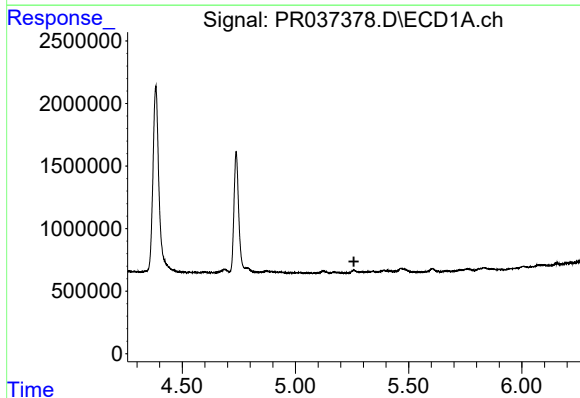
R.T.: 4.738 min  
Delta R.T.: 0.004 min  
Response: 13911208  
Conc: 475.58 ng/ml

Instrument :  
ECD\_R  
ClientSampled :  
OIL-220-3



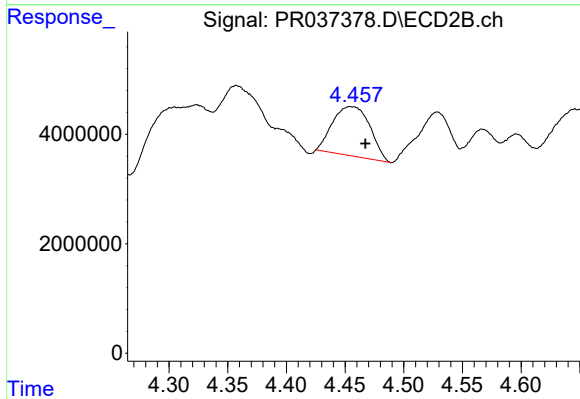
#11 AR-1232-1

R.T.: 3.724 min  
Delta R.T.: -0.043 min  
Response: 12258681  
Conc: 104.78 ng/ml



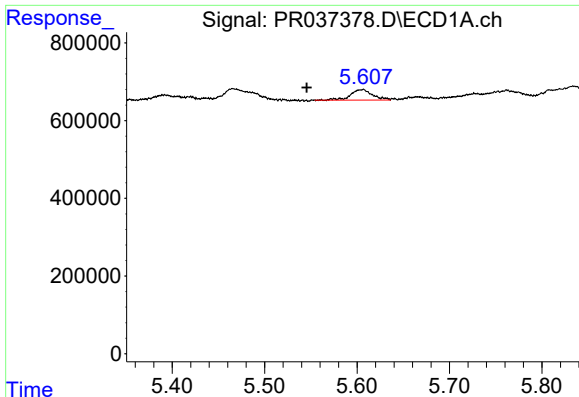
#12 AR-1232-2

R.T.: 0.000 min  
Exp R.T. : 5.258 min  
Response: 0  
Conc: N.D.



#12 AR-1232-2

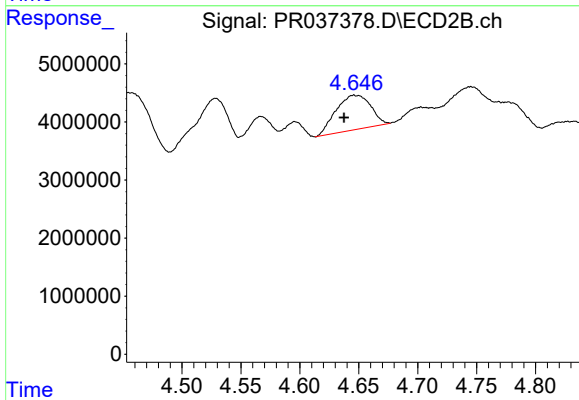
R.T.: 4.454 min  
Delta R.T.: -0.013 min  
Response: 19895366  
Conc: 143.93 ng/ml



#13 AR-1232-3

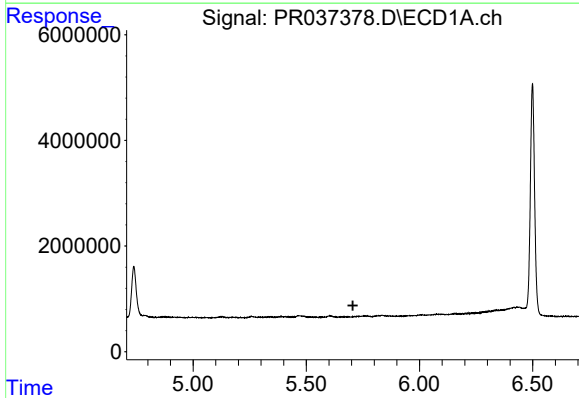
R.T.: 5.607 min  
 Delta R.T.: 0.061 min  
 Response: 450756  
 Conc: 13.33 ng/ml

Instrument :  
 ECD\_R  
 ClientSampleId :  
 OIL-220-3



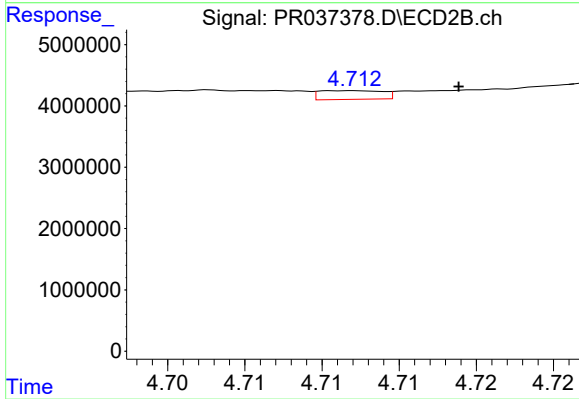
#13 AR-1232-3

R.T.: 4.646 min  
 Delta R.T.: 0.008 min  
 Response: 12183172  
 Conc: 173.55 ng/ml



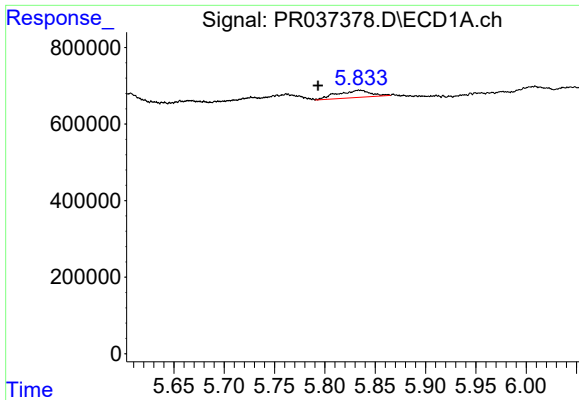
#14 AR-1232-4

R.T.: 0.000 min  
 Exp R.T. : 5.706 min  
 Response: 0  
 Conc: N.D.



#14 AR-1232-4

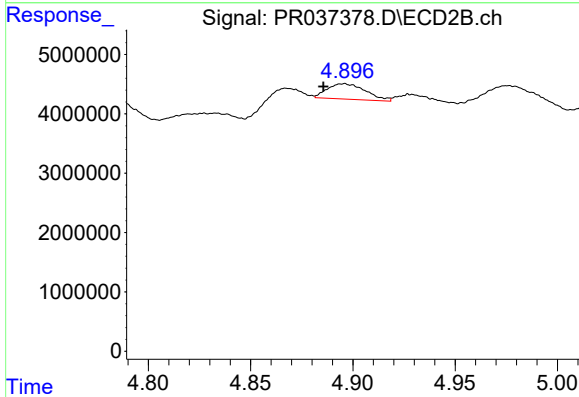
R.T.: 4.712 min  
 Delta R.T.: -0.007 min  
 Response: 406714  
 Conc: 6.82 ng/ml



#15 AR-1232-5

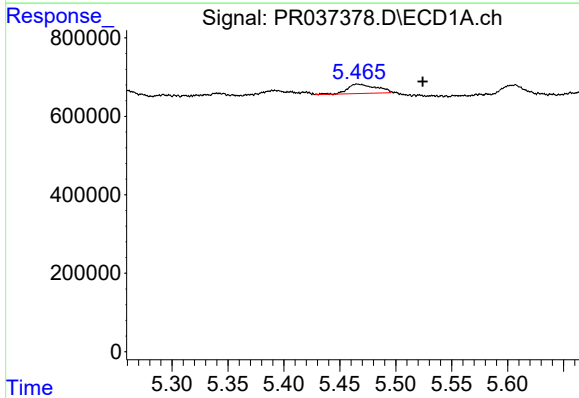
R.T.: 5.834 min  
 Delta R.T.: 0.041 min  
 Response: 432231  
 Conc: 36.96 ng/ml

Instrument :  
 ECD\_R  
 ClientSampleId :  
 OIL-220-3



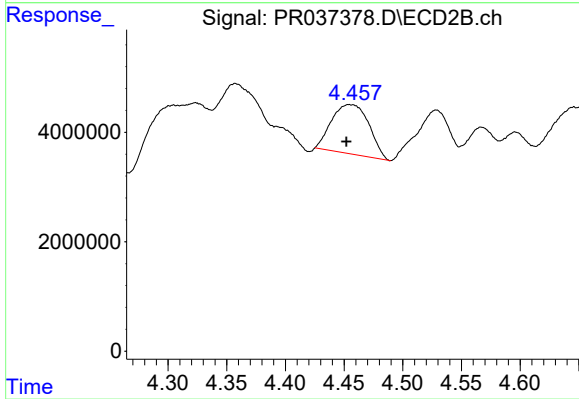
#15 AR-1232-5

R.T.: 4.896 min  
 Delta R.T.: 0.011 min  
 Response: 3386663  
 Conc: 49.63 ng/ml



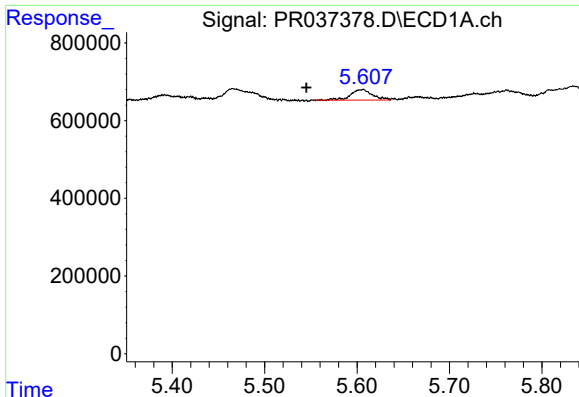
#16 AR-1242-1

R.T.: 5.466 min  
 Delta R.T.: -0.058 min  
 Response: 423089  
 Conc: 12.37 ng/ml



#16 AR-1242-1

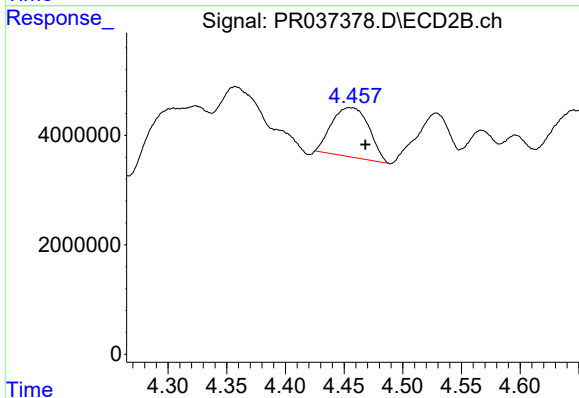
R.T.: 4.454 min  
 Delta R.T.: 0.002 min  
 Response: 19895366  
 Conc: 135.77 ng/ml



#17 AR-1242-2

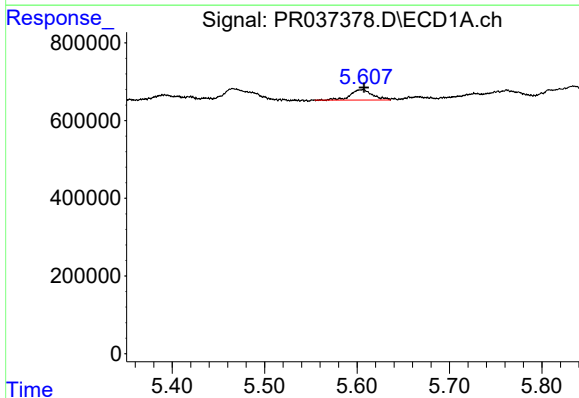
R.T.: 5.607 min  
 Delta R.T.: 0.061 min  
 Response: 450756  
 Conc: 8.13 ng/ml

Instrument :  
 ECD\_R  
 ClientSampleId :  
 OIL-220-3



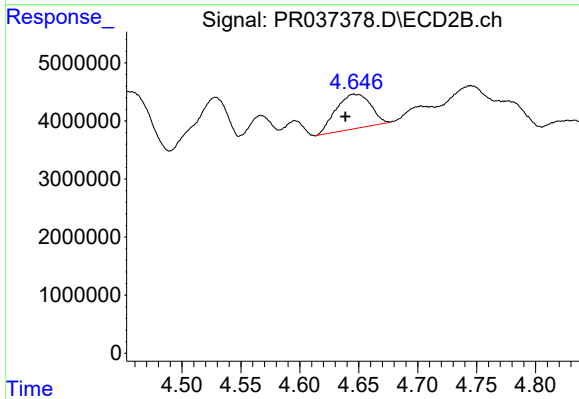
#17 AR-1242-2

R.T.: 4.454 min  
 Delta R.T.: -0.014 min  
 Response: 19895366  
 Conc: 87.20 ng/ml



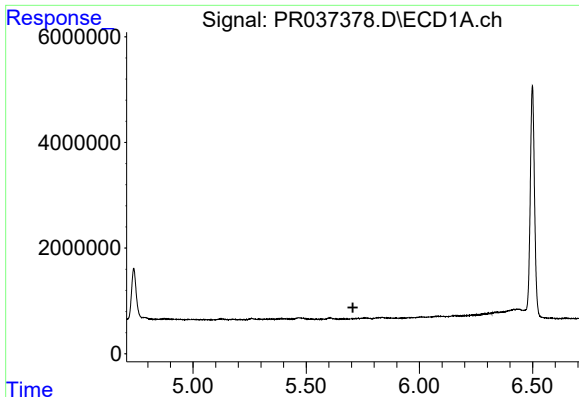
#18 AR-1242-3

R.T.: 5.607 min  
 Delta R.T.: 0.000 min  
 Response: 450756  
 Conc: 13.69 ng/ml



#18 AR-1242-3

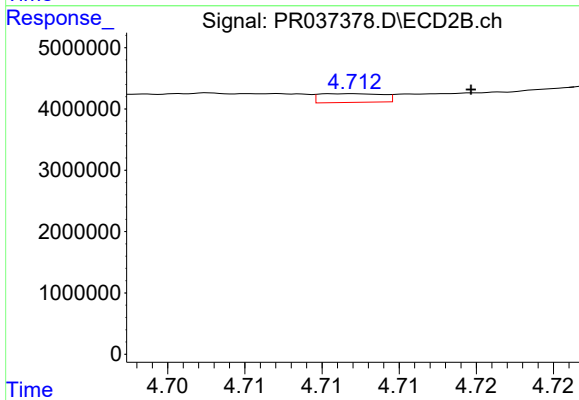
R.T.: 4.646 min  
 Delta R.T.: 0.007 min  
 Response: 12183172  
 Conc: 105.36 ng/ml



#19 AR-1242-4

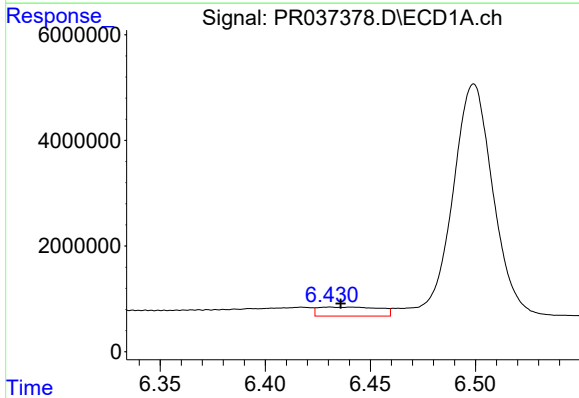
R.T.: 0.000 min  
 Exp R.T.: 5.706 min  
 Response: 0  
 Conc: N.D.

Instrument :  
 ECD\_R  
 ClientSampleId :  
 OIL-220-3



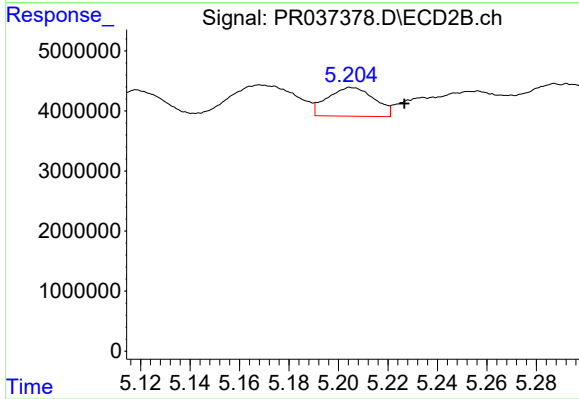
#19 AR-1242-4

R.T.: 4.712 min  
 Delta R.T.: -0.008 min  
 Response: 406714  
 Conc: 3.70 ng/ml



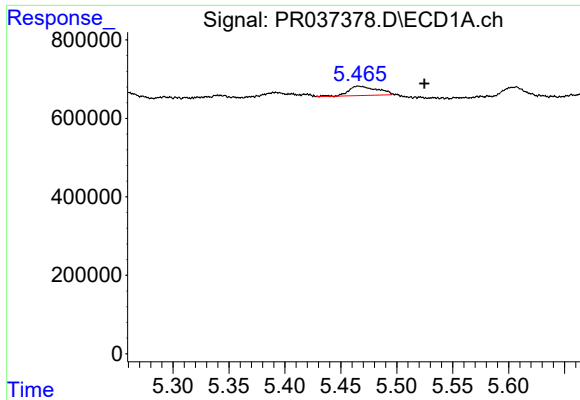
#20 AR-1242-5

R.T.: 6.431 min  
 Delta R.T.: -0.005 min  
 Response: 3439870  
 Conc: 106.90 ng/ml



#20 AR-1242-5

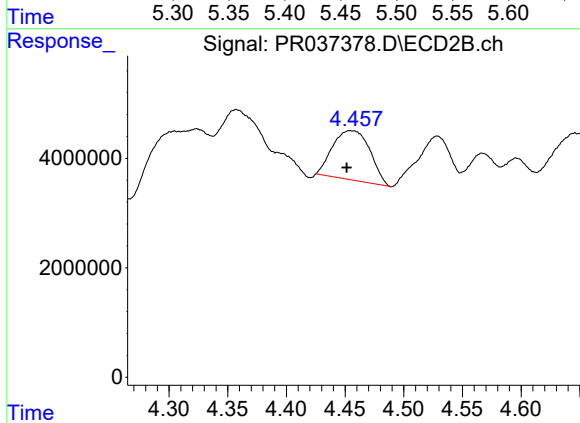
R.T.: 5.205 min  
 Delta R.T.: -0.022 min  
 Response: 6281513  
 Conc: 37.91 ng/ml



#21 AR-1248-1

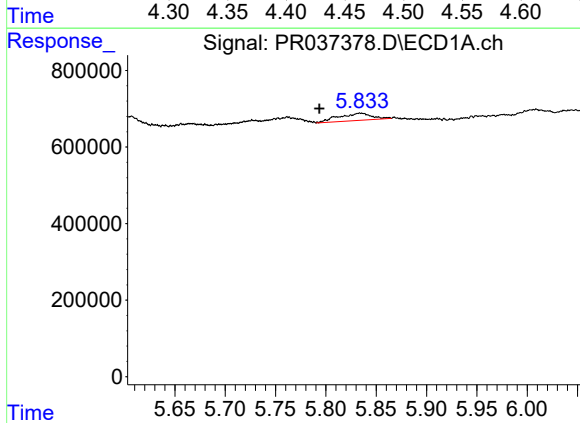
R.T.: 5.466 min  
 Delta R.T.: -0.059 min  
 Response: 423089  
 Conc: 18.47 ng/ml

Instrument :  
 ECD\_R  
 ClientSampled :  
 OIL-220-3



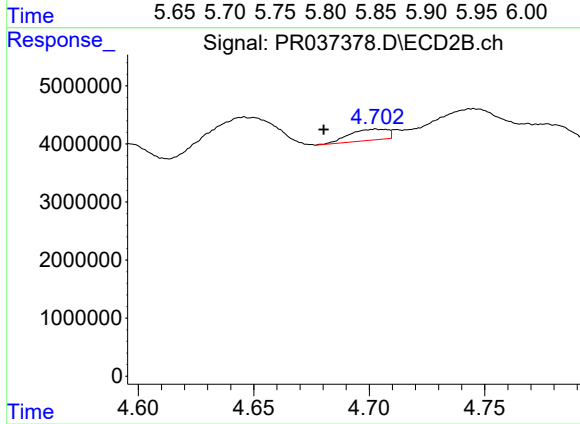
#21 AR-1248-1

R.T.: 4.454 min  
 Delta R.T.: 0.003 min  
 Response: 19895366  
 Conc: 197.64 ng/ml



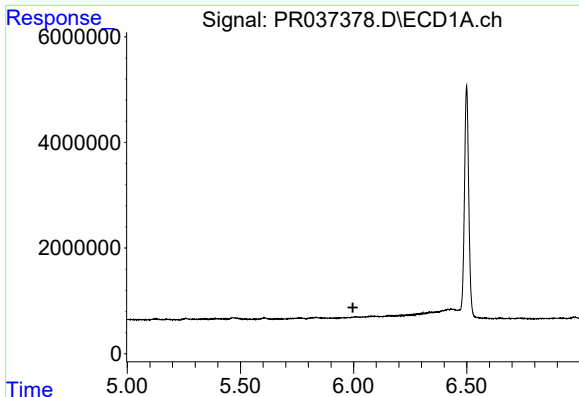
#22 AR-1248-2

R.T.: 5.834 min  
 Delta R.T.: 0.041 min  
 Response: 432231  
 Conc: 12.34 ng/ml



#22 AR-1248-2

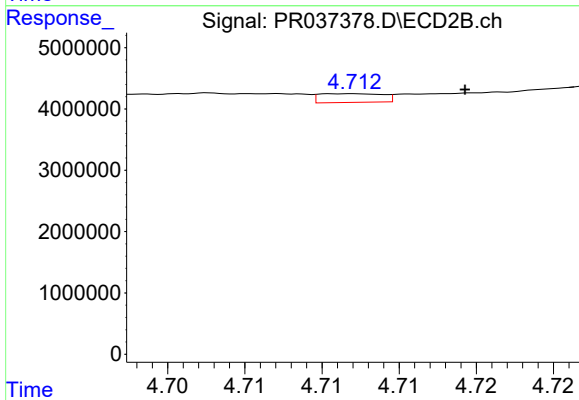
R.T.: 4.703 min  
 Delta R.T.: 0.023 min  
 Response: 2194976  
 Conc: 16.08 ng/ml



#23 AR-1248-3

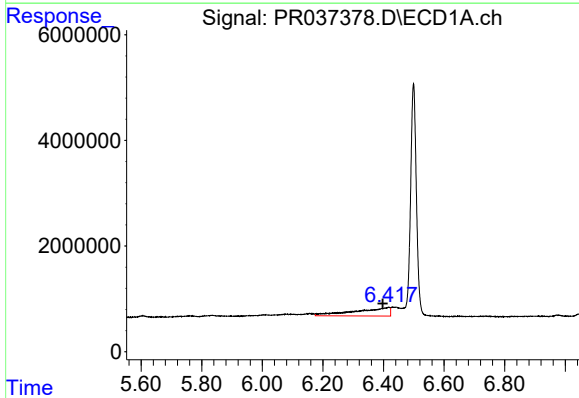
R.T.: 0.000 min  
 Exp R.T.: 5.997 min  
 Response: 0  
 Conc: N.D.

Instrument :  
 ECD\_R  
 ClientSampleId :  
 OIL-220-3



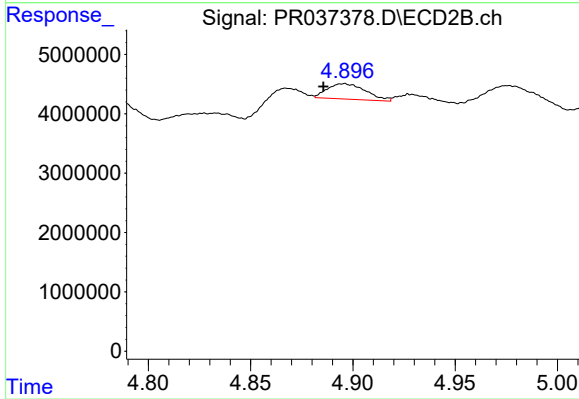
#23 AR-1248-3

R.T.: 4.712 min  
 Delta R.T.: -0.007 min  
 Response: 406714  
 Conc: 2.91 ng/ml



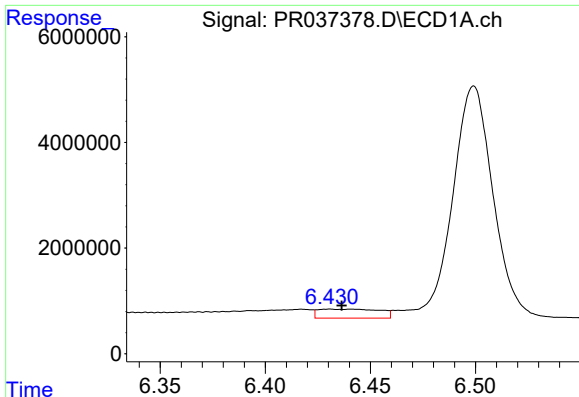
#24 AR-1248-4

R.T.: 6.418 min  
 Delta R.T.: 0.020 min  
 Response: 12770894  
 Conc: 260.87 ng/ml



#24 AR-1248-4

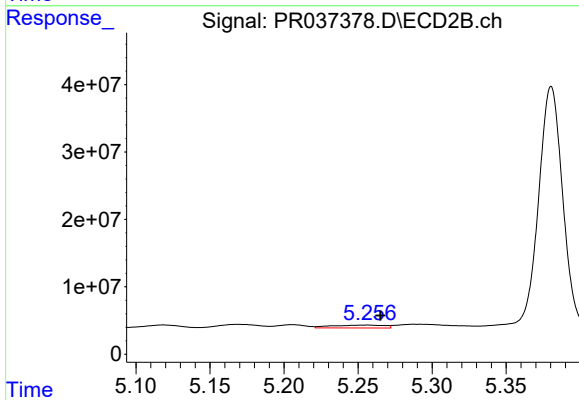
R.T.: 4.896 min  
 Delta R.T.: 0.010 min  
 Response: 3386663  
 Conc: 19.03 ng/ml



#25 AR-1248-5

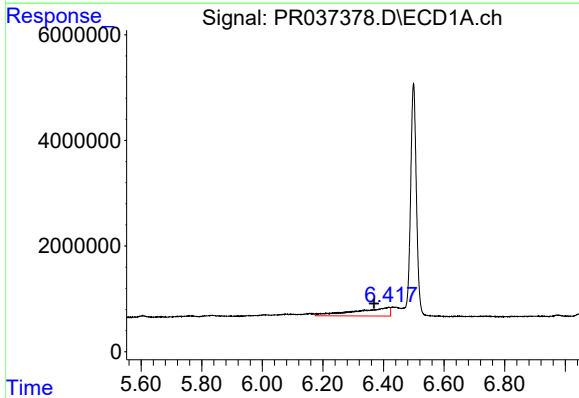
R.T.: 6.431 min  
 Delta R.T.: -0.006 min  
 Response: 3439870  
 Conc: 72.82 ng/ml

Instrument :  
 ECD\_R  
 ClientSampleId :  
 OIL-220-3



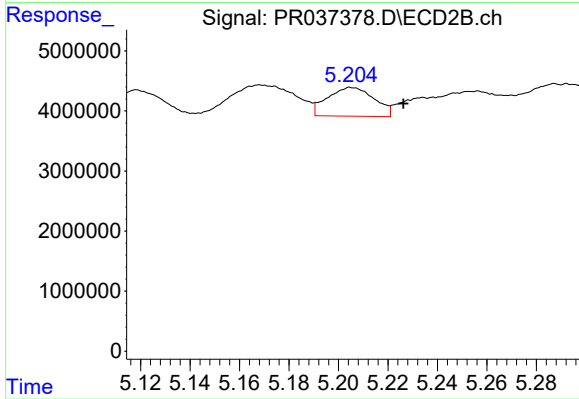
#25 AR-1248-5

R.T.: 5.257 min  
 Delta R.T.: -0.009 min  
 Response: 10891035  
 Conc: 55.68 ng/ml



#26 AR-1254-1

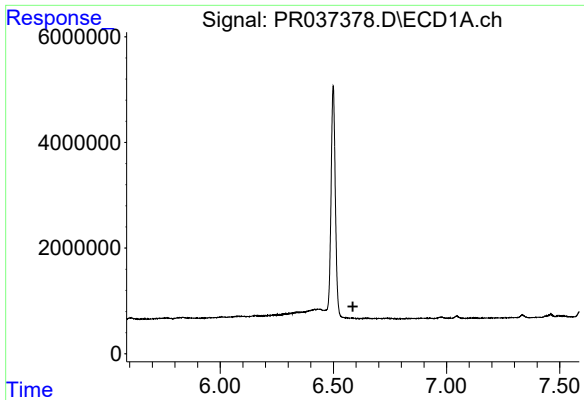
R.T.: 6.418 min  
 Delta R.T.: 0.048 min  
 Response: 12770894  
 Conc: 233.77 ng/ml



#26 AR-1254-1

R.T.: 5.205 min  
 Delta R.T.: -0.021 min  
 Response: 6281513  
 Conc: 18.24 ng/ml

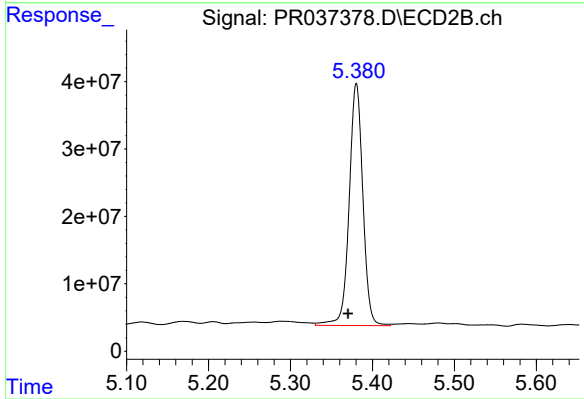




#27 AR-1254-2

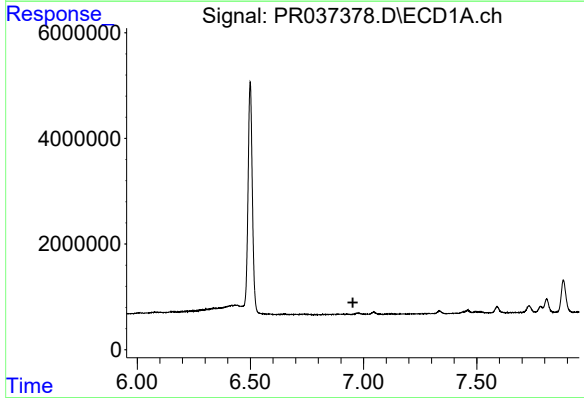
R.T.: 0.000 min  
 Exp R.T. : 6.586 min  
 Response: 0  
 Conc: N.D.

Instrument :  
 ECD\_R  
 ClientSampleId :  
 OIL-220-3



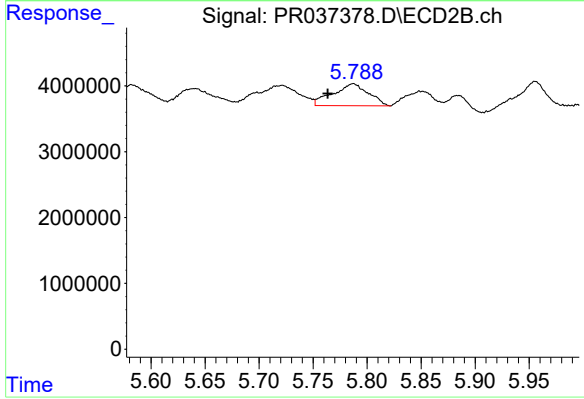
#27 AR-1254-2

R.T.: 5.380 min  
 Delta R.T.: 0.010 min  
 Response: 417123390  
 Conc: 1392.72 ng/ml



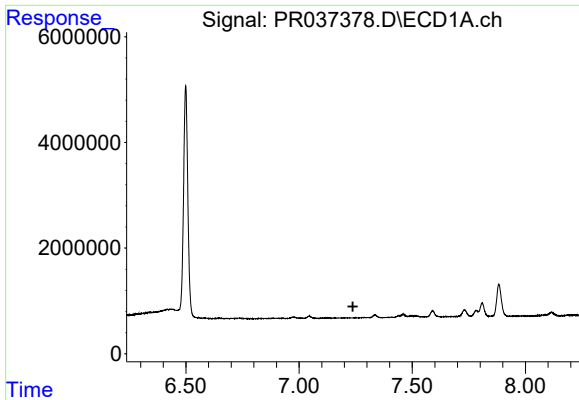
#28 AR-1254-3

R.T.: 0.000 min  
 Exp R.T. : 6.953 min  
 Response: 0  
 Conc: N.D.



#28 AR-1254-3

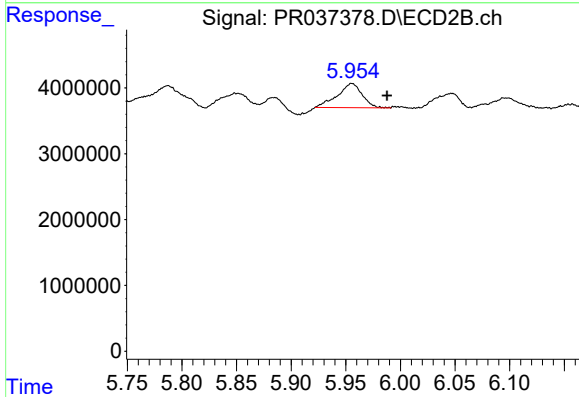
R.T.: 5.787 min  
 Delta R.T.: 0.024 min  
 Response: 7591188  
 Conc: 16.03 ng/ml



#29 AR-1254-4

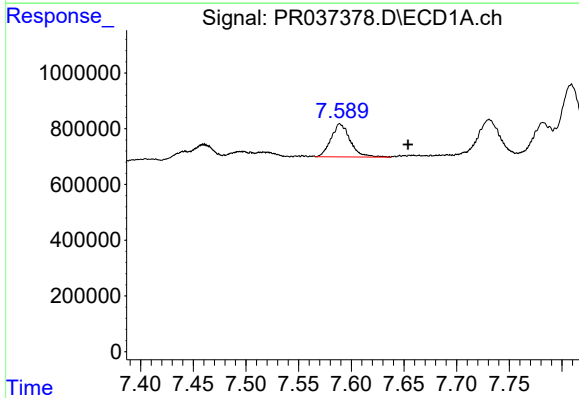
R.T.: 0.000 min  
 Exp R.T.: 7.238 min  
 Response: 0  
 Conc: N.D.

Instrument :  
 ECD\_R  
 ClientSampleId :  
 OIL-220-3



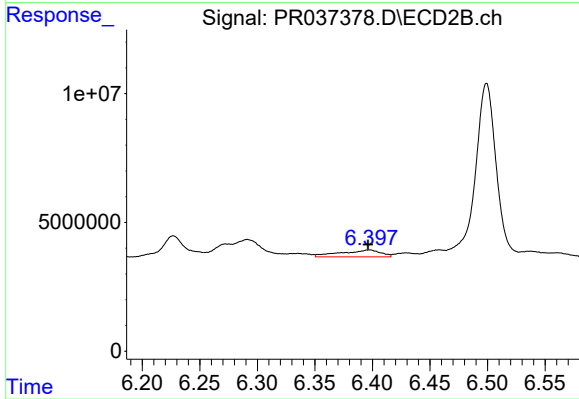
#29 AR-1254-4

R.T.: 5.955 min  
 Delta R.T.: -0.032 min  
 Response: 5823691  
 Conc: 16.61 ng/ml



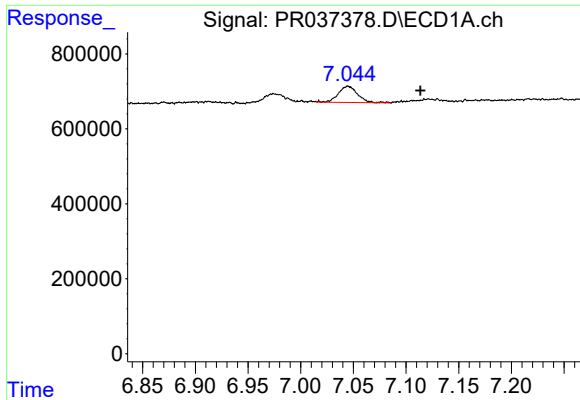
#30 AR-1254-5

R.T.: 7.589 min  
 Delta R.T.: -0.065 min  
 Response: 1489016  
 Conc: 20.72 ng/ml



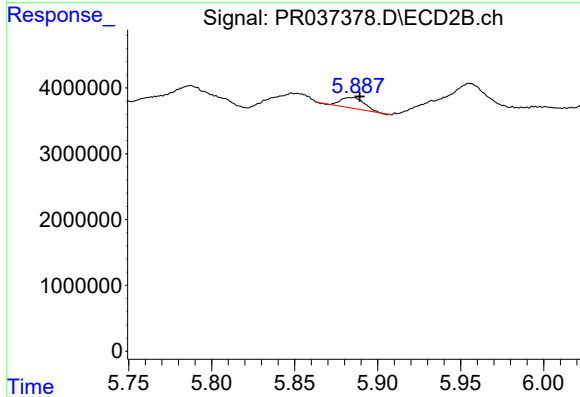
#30 AR-1254-5

R.T.: 6.397 min  
 Delta R.T.: 0.001 min  
 Response: 6465169  
 Conc: 14.60 ng/ml

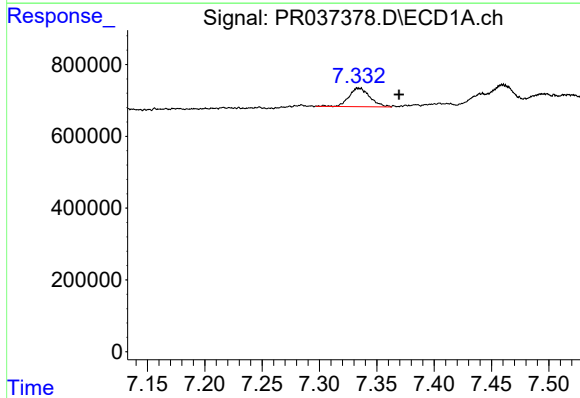


#31 AR-1260-1  
 R.T.: 7.045 min  
 Delta R.T.: -0.069 min  
 Response: 551625  
 Conc: 8.36 ng/ml

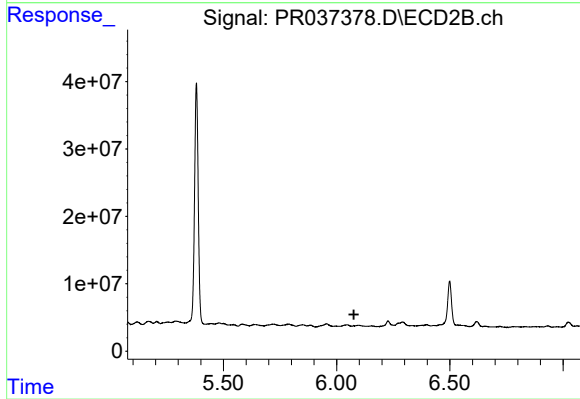
**Instrument :**  
 ECD\_R  
**ClientSampled :**  
 OIL-220-3



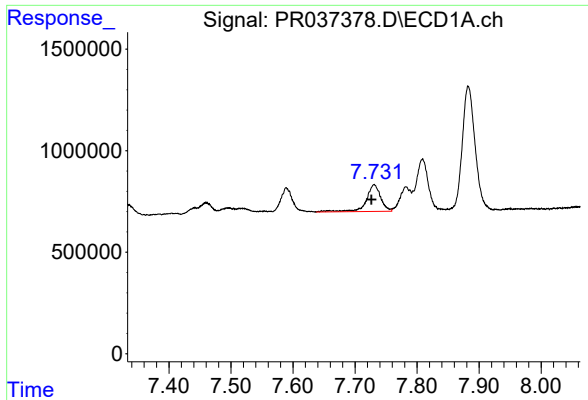
#31 AR-1260-1  
 R.T.: 5.885 min  
 Delta R.T.: -0.004 min  
 Response: 1670331  
 Conc: 5.71 ng/ml



#32 AR-1260-2  
 R.T.: 7.334 min  
 Delta R.T.: -0.035 min  
 Response: 650052  
 Conc: 8.16 ng/ml

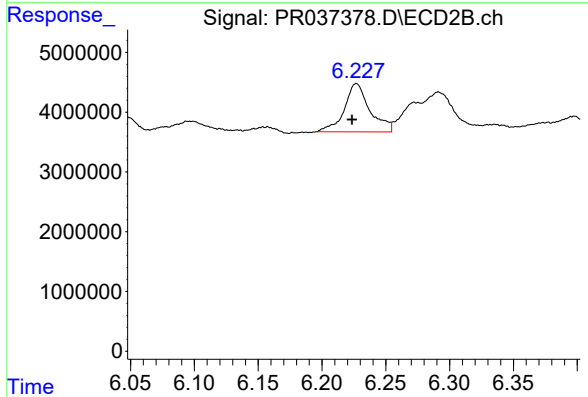


#32 AR-1260-2  
 R.T.: 6.078 min  
 Delta R.T.: 0.002 min  
 Response: -728848  
 Conc: N.D.

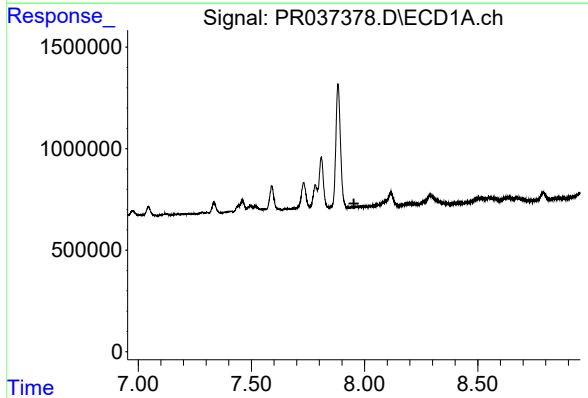


#33 AR-1260-3  
 R.T.: 7.731 min  
 Delta R.T.: 0.004 min  
 Response: 2139744  
 Conc: 34.19 ng/ml

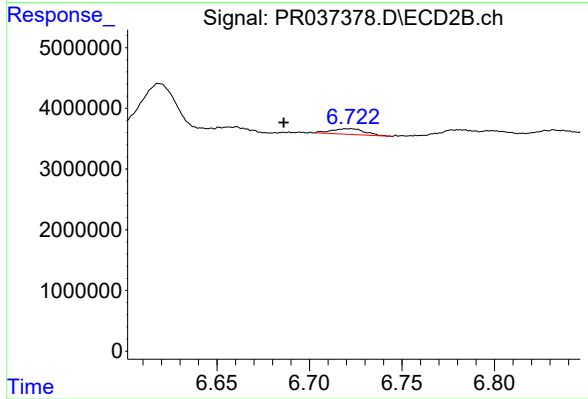
Instrument :  
 ECD\_R  
 ClientSampleId :  
 OIL-220-3



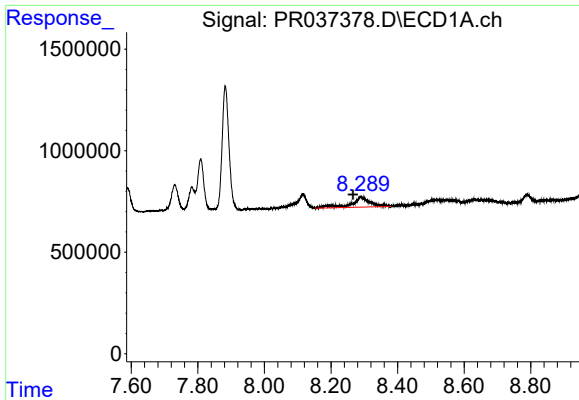
#33 AR-1260-3  
 R.T.: 6.227 min  
 Delta R.T.: 0.004 min  
 Response: 11273858  
 Conc: 31.62 ng/ml



#34 AR-1260-4  
 R.T.: 0.000 min  
 Exp R.T. : 7.953 min  
 Response: 0  
 Conc: N.D.



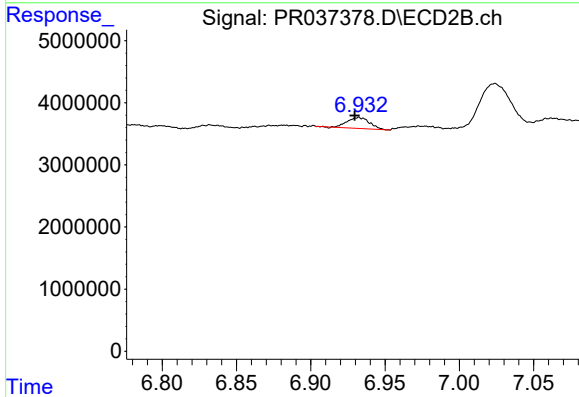
#34 AR-1260-4  
 R.T.: 6.722 min  
 Delta R.T.: 0.036 min  
 Response: 1165029  
 Conc: 3.82 ng/ml



#35 AR-1260-5

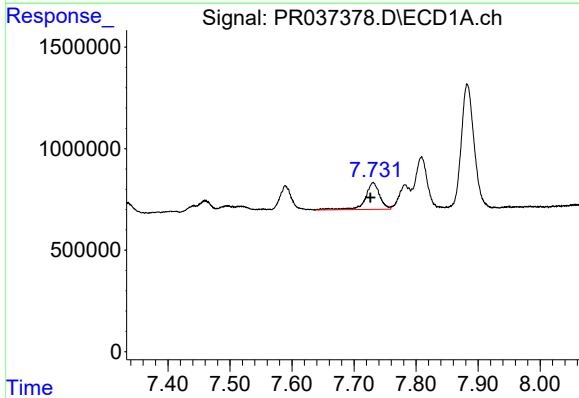
R.T.: 8.289 min  
 Delta R.T.: 0.023 min  
 Response: 2014691  
 Conc: 13.93 ng/ml

**Instrument :**  
 ECD\_R  
**ClientSampleId :**  
 OIL-220-3



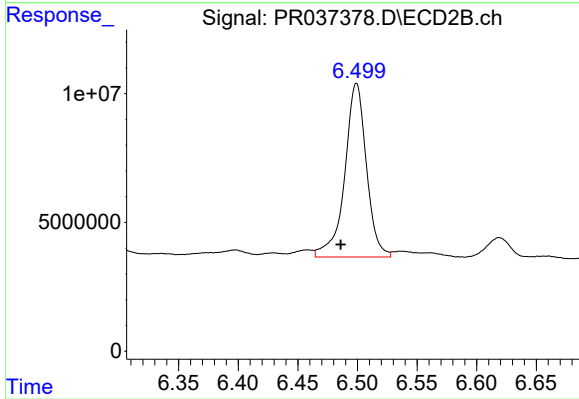
#35 AR-1260-5

R.T.: 6.932 min  
 Delta R.T.: 0.003 min  
 Response: 1858855  
 Conc: 2.14 ng/ml



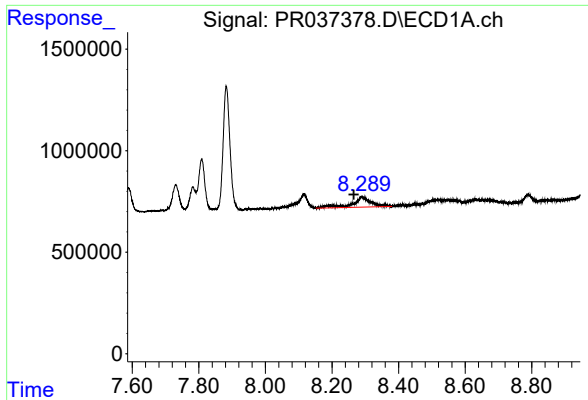
#36 AR-1262-1

R.T.: 7.731 min  
 Delta R.T.: 0.005 min  
 Response: 2139744  
 Conc: 20.49 ng/ml



#36 AR-1262-1

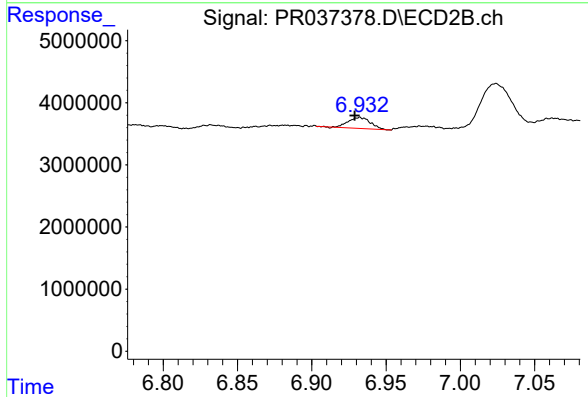
R.T.: 6.499 min  
 Delta R.T.: 0.013 min  
 Response: 85460682  
 Conc: 341.00 ng/ml



#37 AR-1262-2

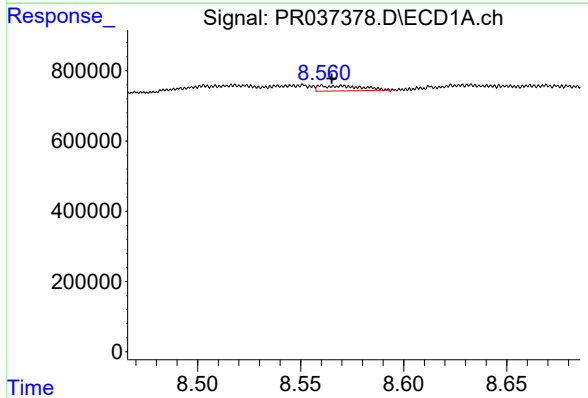
R.T.: 8.289 min  
 Delta R.T.: 0.023 min  
 Response: 2014691  
 Conc: 10.36 ng/ml

Instrument :  
 ECD\_R  
 ClientSampleId :  
 OIL-220-3



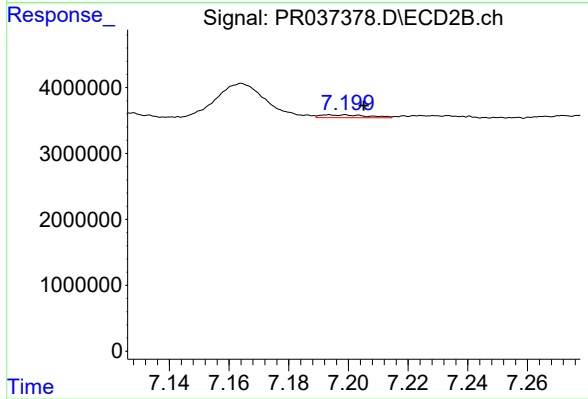
#37 AR-1262-2

R.T.: 6.932 min  
 Delta R.T.: 0.003 min  
 Response: 1858855  
 Conc: 1.48 ng/ml



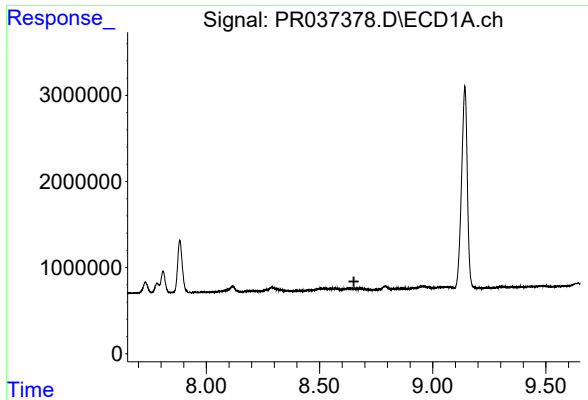
#38 AR-1262-3

R.T.: 8.560 min  
 Delta R.T.: -0.005 min  
 Response: 211985  
 Conc: 1.61 ng/ml



#38 AR-1262-3

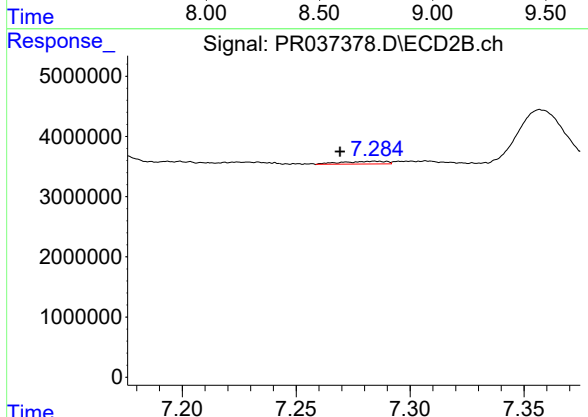
R.T.: 7.194 min  
 Delta R.T.: -0.012 min  
 Response: 463474  
 Conc: 0.85 ng/ml



#39 AR-1262-4

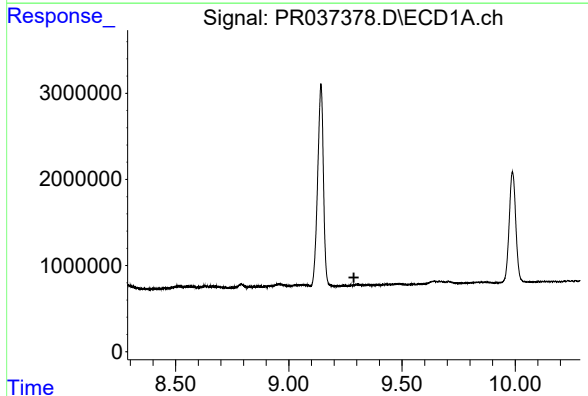
R.T.: 0.000 min  
 Exp R.T. : 8.652 min  
 Response: 0  
 Conc: N.D.

Instrument :  
 ECD\_R  
 ClientSampleId :  
 OIL-220-3



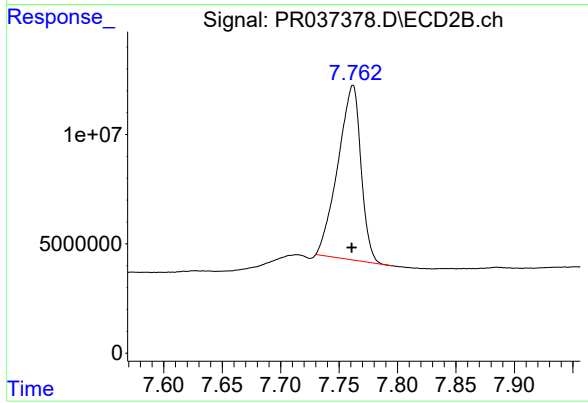
#39 AR-1262-4

R.T.: 7.285 min  
 Delta R.T.: 0.015 min  
 Response: 624059  
 Conc: 0.70 ng/ml



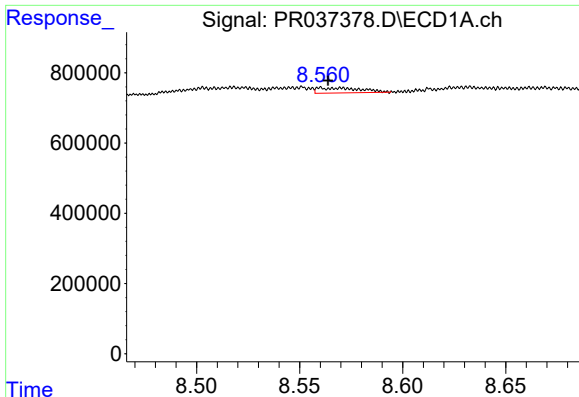
#40 AR-1262-5

R.T.: 0.000 min  
 Exp R.T. : 9.287 min  
 Response: 0  
 Conc: N.D.



#40 AR-1262-5

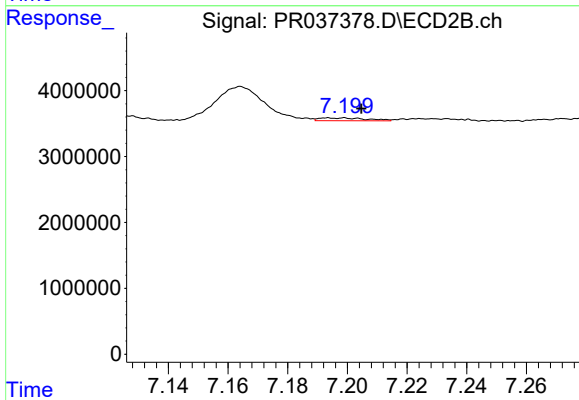
R.T.: 7.762 min  
 Delta R.T.: 0.000 min  
 Response: 109167328  
 Conc: 285.32 ng/ml



#41 AR-1268-1

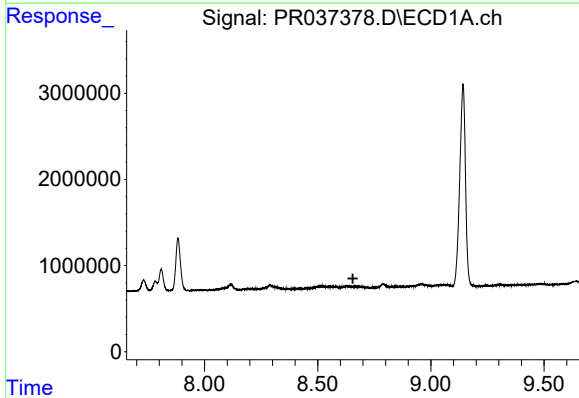
R.T.: 8.560 min  
 Delta R.T.: -0.004 min  
 Response: 211985  
 Conc: 1.18 ng/ml

Instrument :  
 ECD\_R  
 ClientSampled :  
 OIL-220-3



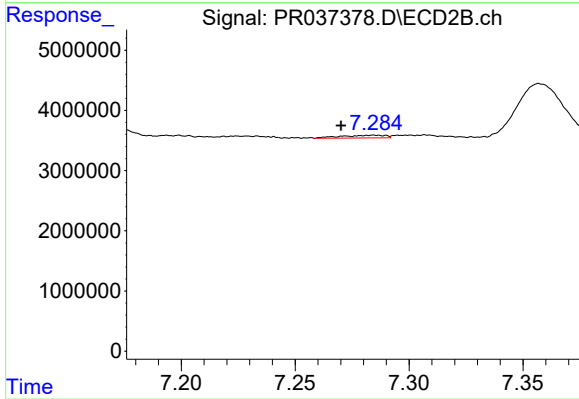
#41 AR-1268-1

R.T.: 7.194 min  
 Delta R.T.: -0.011 min  
 Response: 463474  
 Conc: 0.38 ng/ml



#42 AR-1268-2

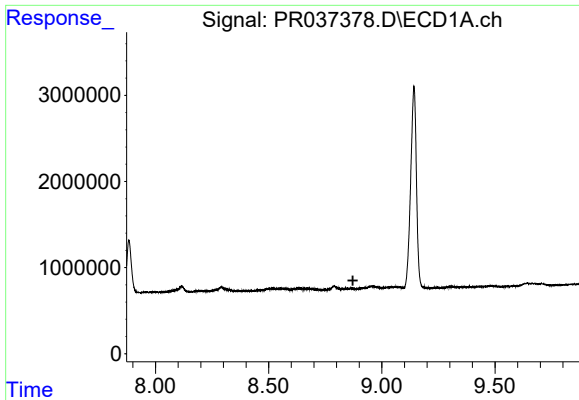
R.T.: 0.000 min  
 Exp R.T. : 8.655 min  
 Response: 0  
 Conc: N.D.



#42 AR-1268-2

R.T.: 7.285 min  
 Delta R.T.: 0.014 min  
 Response: 624059  
 Conc: 0.59 ng/ml

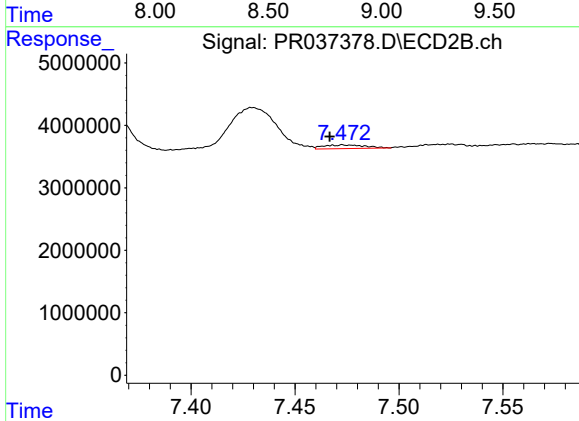




#43 AR-1268-3

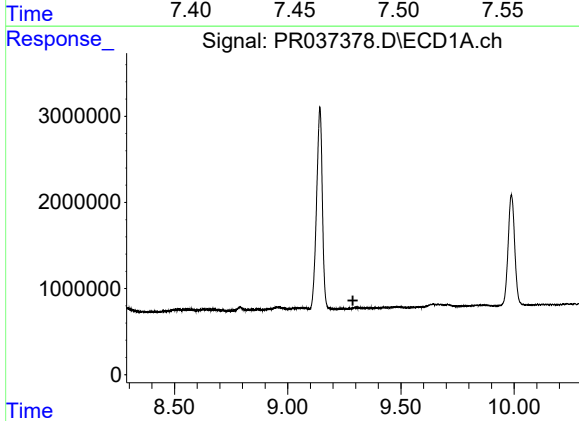
R.T.: 0.000 min  
 Exp R.T. : 8.872 min  
 Response: 0  
 Conc: N.D.

Instrument :  
 ECD\_R  
 ClientSampleId :  
 OIL-220-3



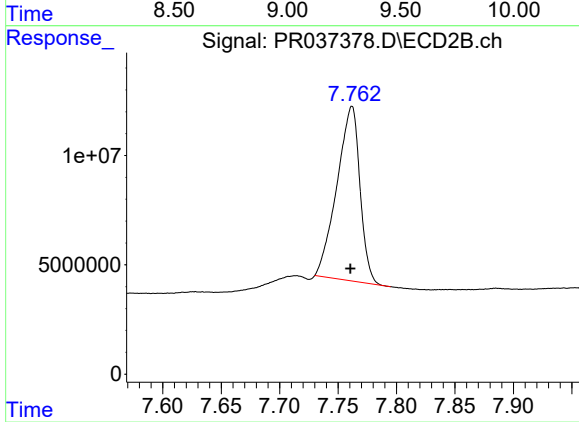
#43 AR-1268-3

R.T.: 7.473 min  
 Delta R.T.: 0.007 min  
 Response: 816502  
 Conc: 0.92 ng/ml



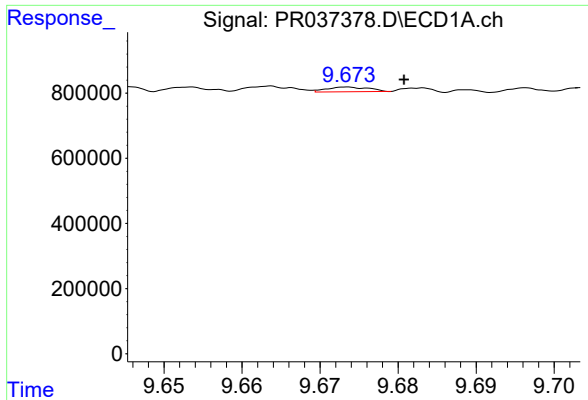
#44 AR-1268-4

R.T.: 0.000 min  
 Exp R.T. : 9.288 min  
 Response: 0  
 Conc: N.D.



#44 AR-1268-4

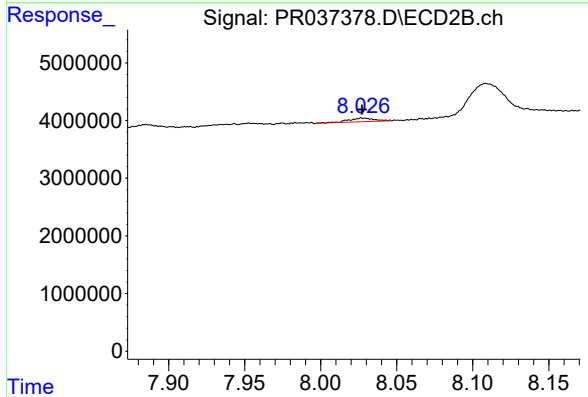
R.T.: 7.762 min  
 Delta R.T.: 0.001 min  
 Response: 109167328  
 Conc: 300.92 ng/ml



#45 AR-1268-5

R.T.: 9.674 min  
Delta R.T.: -0.007 min  
Response: 53661  
Conc: 0.12 ng/ml

Instrument :  
ECD\_R  
ClientSampleId :  
OIL-220-3



#45 AR-1268-5

R.T.: 8.028 min  
Delta R.T.: 0.000 min  
Response: 756211  
Conc: 0.30 ng/ml