

Data Path : Z:\pestpcbsrv\HPCHEM1\ECD\_R\Data\PR050219\  
 Data File : PR037536.D  
 Signal(s) : Signal #1: ECD1A.ch Signal #2: ECD2B.ch  
 Acq On : 02 May 2019 09:08  
 Operator : SM\SJ  
 Sample : AR1660CCC500  
 Misc :  
 ALS Vial : 3 Sample Multiplier: 1

Instrument :  
 ECD\_R  
 ClientSampled :  
 AR1660CCC500

Integration File signal 1: autoint1.e  
 Integration File signal 2: autoint2.e  
 Quant Time: May 02 09:48:50 2019  
 Quant Method : Z:\pestpcbsrv\HPCHEM1\ECD\_R\Method\PR042219.M  
 Quant Title : GC EXTRACTABLES  
 QLast Update : Mon Apr 22 17:27:39 2019  
 Response via : Initial Calibration  
 Integrator: ChemStation

Volume Inj. : 2 µl  
 Signal #1 Phase : ZB-MR1 Signal #2 Phase: ZB-MR2  
 Signal #1 Info : 30Mx0.32mmx 0.50µ Signal #2 Info : 30M x 0.32mm x 0.25µm

Compound	RT#1	RT#2	Resp#1	Resp#2	ng/ml	ng/ml
System Monitoring Compounds						
1) SA Tetrachlo...	4.367	3.407	59565919	259.1E6	47.615	54.023
2) SA Decachlor...	9.993	8.246	61485538	301.4E6	46.489	51.751
Target Compounds						
3) L1 AR-1016-1	5.526	4.451	20879867	94587106	484.579	519.481
4) L1 AR-1016-2	5.548	4.467	35230867	147.9E6	508.769	524.132
5) L1 AR-1016-3	5.610	4.637	20334134	74276605	504.216	516.587
6) L1 AR-1016-4	5.709	4.679	16759841	58553499	510.349	529.249
7) L1 AR-1016-5	5.998	4.884	18000161	87291184	524.941	574.250
8) L2 AR-1221-1	4.573	3.611	1936635	20584740	154.891	404.268 #
9) L2 AR-1221-2	4.663	3.696	2935815	28836480	324.616	776.515 #
10) L2 AR-1221-3	4.738	3.767	8993149	54776061	293.423	447.342 #
11) L3 AR-1232-1	4.738	3.767	8993149	54776061	307.448	468.207 #
12) L3 AR-1232-2	5.261	4.467	16965438	147.9E6	1004.021	1069.774
13) L3 AR-1232-3	5.548	4.637	35230867	74276605	1042.194	1058.045
14) L3 AR-1232-4	5.709	4.719	16759841	72268390	1067.729	1211.098
15) L3 AR-1232-5	5.795	4.884	15125986	87291184	1293.300	1279.108
16) L4 AR-1242-1	5.526	4.451	20879867	94587106	610.263	645.479
17) L4 AR-1242-2	5.548	4.467	35230867	147.9E6	635.135	648.093
18) L4 AR-1242-3	5.610	4.637	20334134	74276605	617.778	642.365
19) L4 AR-1242-4	5.709	4.719	16759841	72268390	635.386	657.522
20) L4 AR-1242-5	6.438	5.226	7575806	77276891	235.428	466.368 #
21) L5 AR-1248-1	5.526	4.451	20879867	94587106	911.491	939.632
22) L5 AR-1248-2	5.795	4.679	15125986	58553499	431.993	429.046
23) L5 AR-1248-3	5.998	4.719	18000161	72268390	440.000	516.302
24) L5 AR-1248-4	6.372	4.884	28882266	87291184	589.984	490.497
25) L5 AR-1248-5	6.438	5.248	7575806	61959918	160.378	316.749 #
26) L6 AR-1254-1	6.372	5.226	28882266	77276891	528.680	224.333 #
27) L6 AR-1254-2	6.586	5.370	17020141	85443972	198.608	285.286 #
28) L6 AR-1254-3	6.954	5.775	12346060	132.9E6	135.725	280.665 #
29) L6 AR-1254-4	7.236	5.988	13075235	18605506	195.128	53.061 #
30) L6 AR-1254-5	7.652	6.395	48802322	242.2E6	678.933	546.894
31) L7 AR-1260-1	7.113	5.889	32668069	164.5E6	495.074	562.903
32) L7 AR-1260-2	7.368	6.075	43432579	255.4E6	544.925	554.548
33) L7 AR-1260-3	7.724	6.224	32748576	193.9E6	523.344	543.793
34) L7 AR-1260-4	7.950	6.685	37330651	173.6E6	501.728	569.653
35) L7 AR-1260-5	8.262	6.928	69032872	492.6E6	477.335	568.032
36) L8 AR-1262-1	7.724	6.485	32748576	100.8E6	313.525	402.325 #
37) L8 AR-1262-2	8.262	6.928	69032872	492.6E6	355.135	392.232
38) L8 AR-1262-3	8.582	7.204	44147146	161.2E6	335.694	294.070
39) L8 AR-1262-4	8.634	7.268	28267525	448.3E6	287.772	499.375 #
40) L8 AR-1262-5	9.284	7.760	19687254	112.5E6	285.155	294.155
41) L9 AR-1268-1	8.582	7.204	44147146	161.2E6	246.506	130.971 #

Data Path : Z:\pestpcbsrv\HPCHEM1\ECD\_R\Data\PR050219\  
 Data File : PR037536.D  
 Signal(s) : Signal #1: ECD1A.ch Signal #2: ECD2B.ch  
 Acq On : 02 May 2019 09:08  
 Operator : SM\SJ  
 Sample : AR1660CCC500  
 Misc :  
 ALS Vial : 3 Sample Multiplier: 1

Instrument :  
 ECD\_R  
 ClientSampleId :  
 AR1660CCC500

Integration File signal 1: autoint1.e  
 Integration File signal 2: autoint2.e  
 Quant Time: May 02 09:48:50 2019  
 Quant Method : Z:\pestpcbsrv\HPCHEM1\ECD\_R\Method\PR042219.M  
 Quant Title : GC EXTRACTABLES  
 QLast Update : Mon Apr 22 17:27:39 2019  
 Response via : Initial Calibration  
 Integrator: ChemStation

Volume Inj. : 2 µl  
 Signal #1 Phase : ZB-MR1 Signal #2 Phase: ZB-MR2  
 Signal #1 Info : 30Mx0.32mmx 0.50µ Signal #2 Info : 30M x 0.32mm x 0.25µm

	Compound	RT#1	RT#2	Resp#1	Resp#2	ng/ml	ng/ml
42)	L9 AR-1268-2	8.634	7.268	28267525	448.3E6	171.842	423.319 #
43)	L9 AR-1268-3	8.870	7.466	1716024	12669315	12.396	14.296
44)	L9 AR-1268-4	9.284	7.760	19687254	112.5E6	315.573	310.239
45)	L9 AR-1268-5	9.677	8.026	5365093	28007949	11.769	11.009

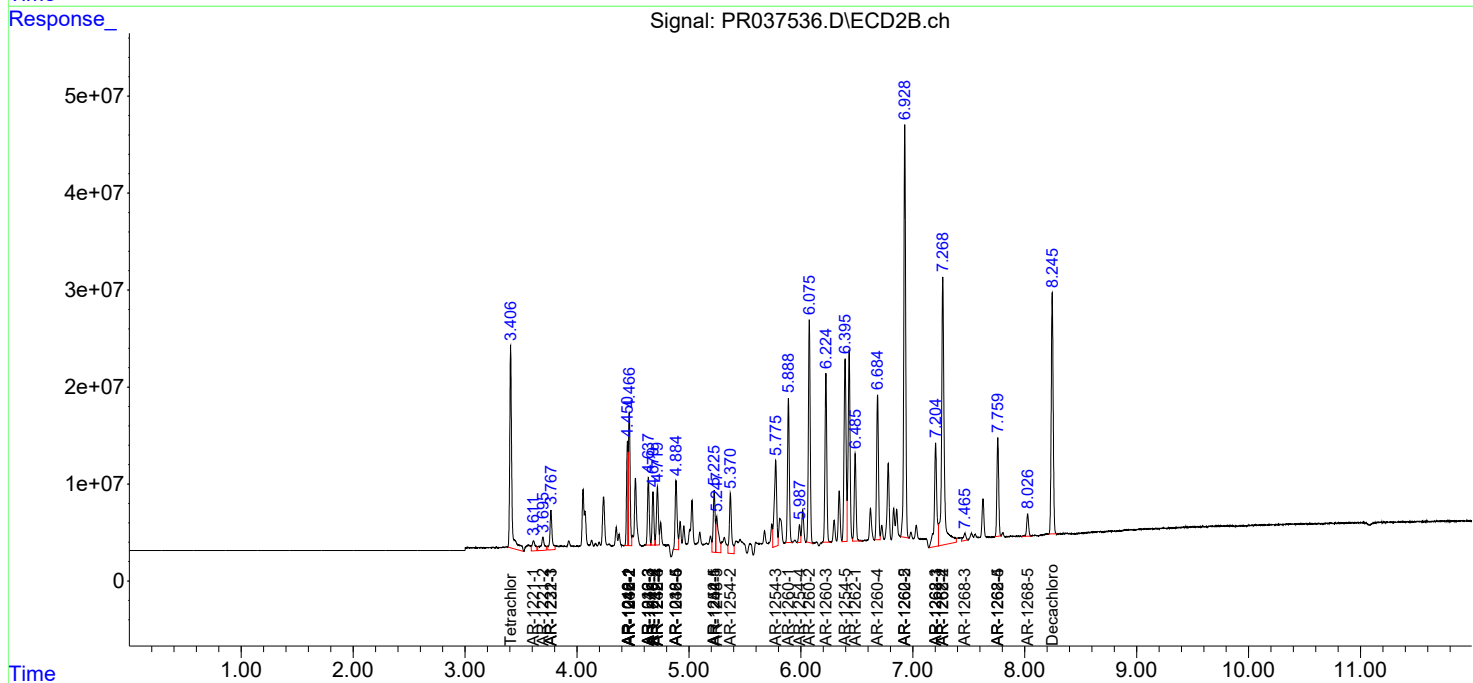
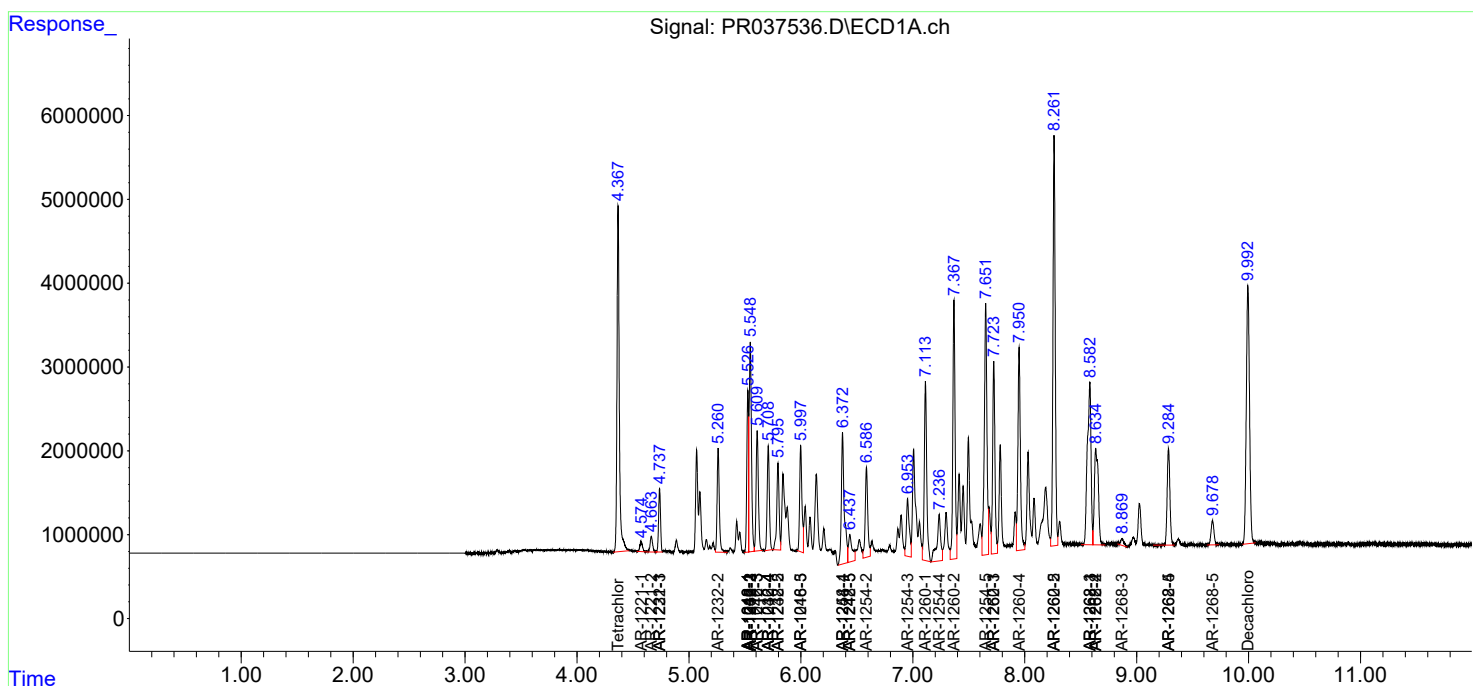
(f)=RT Delta > 1/2 Window (#)=Amounts differ by > 25% (m)=manual int.

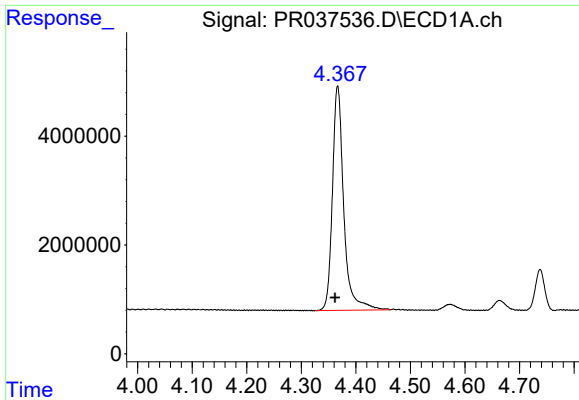
Data Path : Z:\pestpcbsrv\HPCHEM1\ECD\_R\Data\PR050219\  
 Data File : PR037536.D  
 Signal(s) : Signal #1: ECD1A.ch Signal #2: ECD2B.ch  
 Acq On : 02 May 2019 09:08  
 Operator : SM\SJ  
 Sample : AR1660CCC500  
 Misc :  
 ALS Vial : 3 Sample Multiplier: 1

Instrument :  
 ECD\_R  
 Client Sampled :  
 AR1660CCC500

Integration File signal 1: autoint1.e  
 Integration File signal 2: autoint2.e  
 Quant Time: May 02 09:48:50 2019  
 Quant Method : Z:\pestpcbsrv\HPCHEM1\ECD\_R\Method\PR042219.M  
 Quant Title : GC EXTRACTABLES  
 QLast Update : Mon Apr 22 17:27:39 2019  
 Response via : Initial Calibration  
 Integrator: ChemStation

Volume Inj. : 2 µl  
 Signal #1 Phase : ZB-MR1 Signal #2 Phase: ZB-MR2  
 Signal #1 Info : 30Mx0.32mmx 0.50µ Signal #2 Info : 30M x 0.32mm x 0.25µm

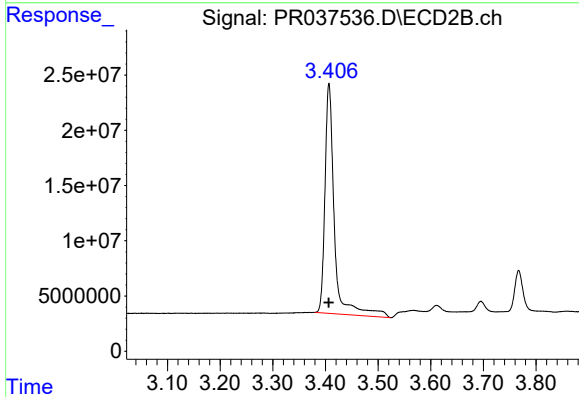




#1 Tetrachloro-m-xylene

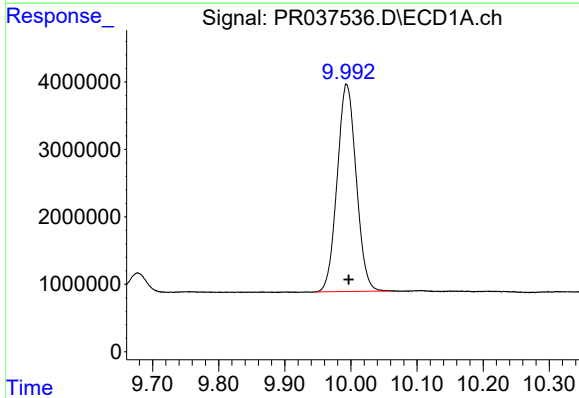
R.T.: 4.367 min  
Delta R.T.: 0.005 min  
Response: 59565919  
Conc: 47.61 ng/ml

Instrument :  
ECD\_R  
ClientSampleId :  
AR1660CCC500



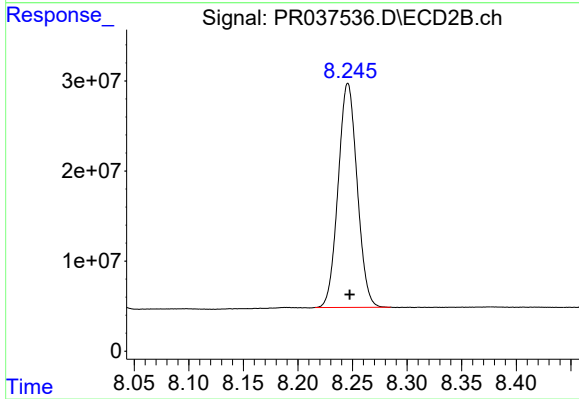
#1 Tetrachloro-m-xylene

R.T.: 3.407 min  
Delta R.T.: 0.000 min  
Response: 259066260  
Conc: 54.02 ng/ml



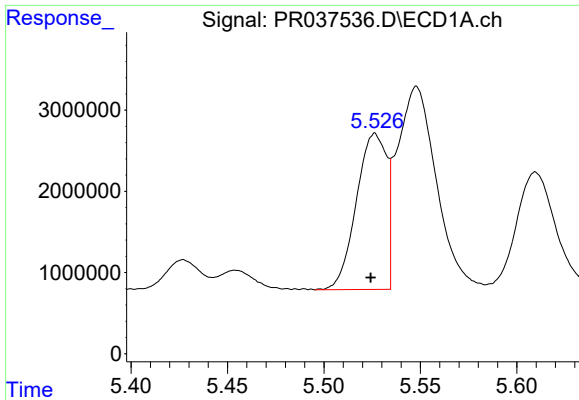
#2 Decachlorobiphenyl

R.T.: 9.993 min  
Delta R.T.: -0.003 min  
Response: 61485538  
Conc: 46.49 ng/ml



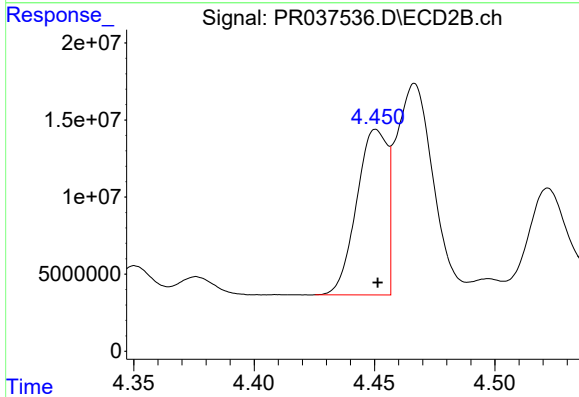
#2 Decachlorobiphenyl

R.T.: 8.246 min  
Delta R.T.: -0.002 min  
Response: 301411685  
Conc: 51.75 ng/ml

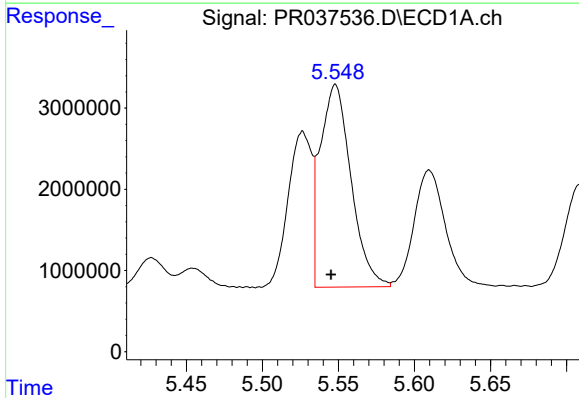


#3 AR-1016-1  
 R.T.: 5.526 min  
 Delta R.T.: 0.002 min  
 Response: 20879867  
 Conc: 484.58 ng/ml

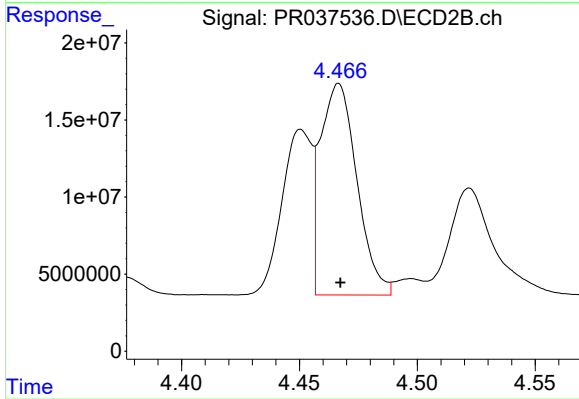
**Instrument :**  
 ECD\_R  
**ClientSampled :**  
 AR1660CCC500



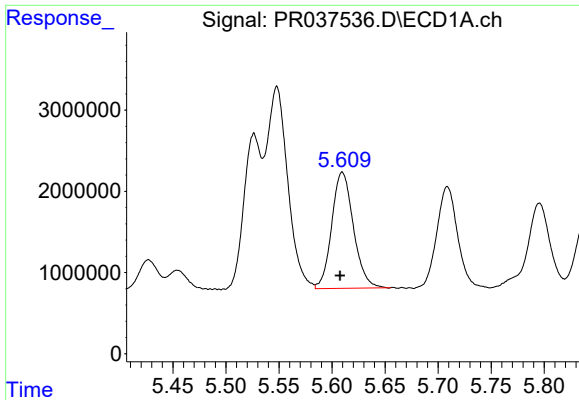
#3 AR-1016-1  
 R.T.: 4.451 min  
 Delta R.T.: 0.000 min  
 Response: 94587106  
 Conc: 519.48 ng/ml



#4 AR-1016-2  
 R.T.: 5.548 min  
 Delta R.T.: 0.003 min  
 Response: 35230867  
 Conc: 508.77 ng/ml

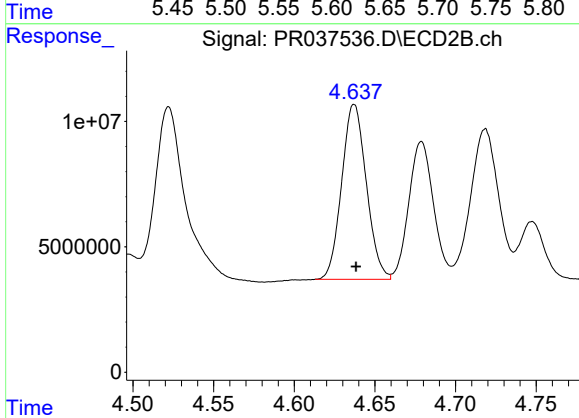


#4 AR-1016-2  
 R.T.: 4.467 min  
 Delta R.T.: 0.000 min  
 Response: 147869263  
 Conc: 524.13 ng/ml

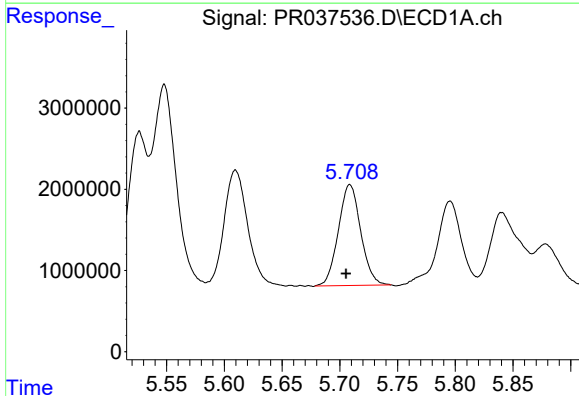


#5 AR-1016-3  
 R.T.: 5.610 min  
 Delta R.T.: 0.002 min  
 Response: 20334134  
 Conc: 504.22 ng/ml

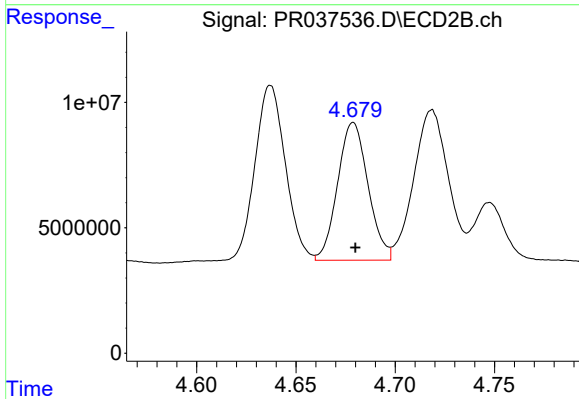
Instrument :  
 ECD\_R  
 ClientSampleId :  
 AR1660CCC500



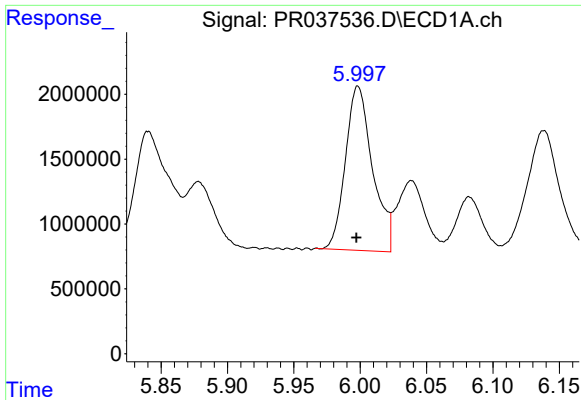
#5 AR-1016-3  
 R.T.: 4.637 min  
 Delta R.T.: 0.000 min  
 Response: 74276605  
 Conc: 516.59 ng/ml



#6 AR-1016-4  
 R.T.: 5.709 min  
 Delta R.T.: 0.003 min  
 Response: 16759841  
 Conc: 510.35 ng/ml



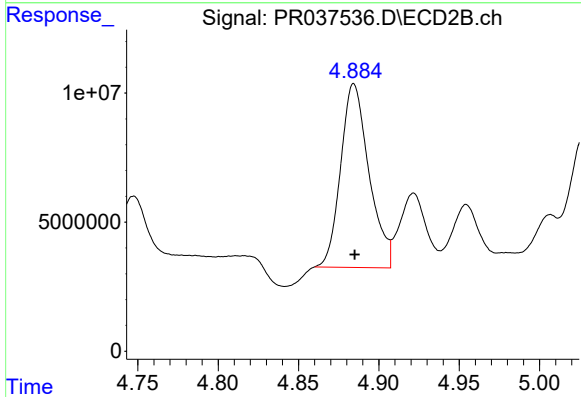
#6 AR-1016-4  
 R.T.: 4.679 min  
 Delta R.T.: 0.000 min  
 Response: 58553499  
 Conc: 529.25 ng/ml



#7 AR-1016-5

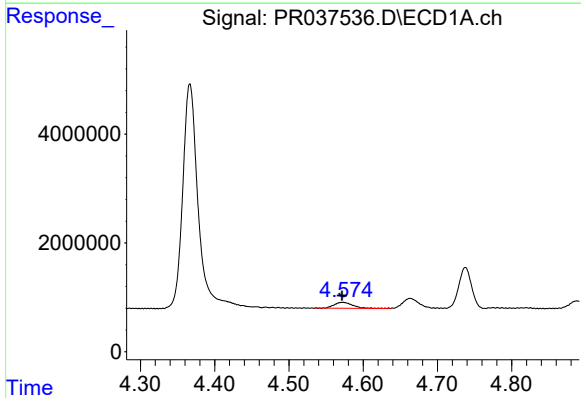
R.T.: 5.998 min  
 Delta R.T.: 0.001 min  
 Response: 1800161  
 Conc: 524.94 ng/ml

Instrument :  
 ECD\_R  
 ClientSampleId :  
 AR1660CCC500



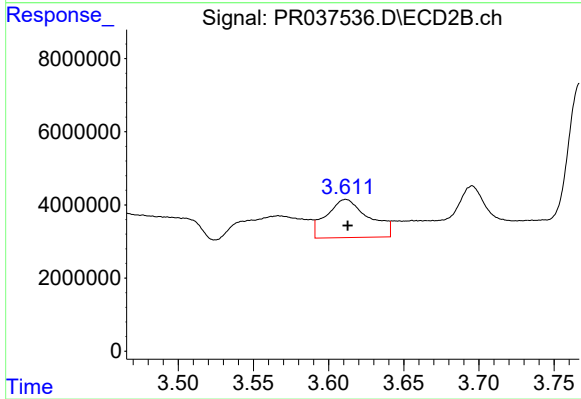
#7 AR-1016-5

R.T.: 4.884 min  
 Delta R.T.: 0.000 min  
 Response: 87291184  
 Conc: 574.25 ng/ml



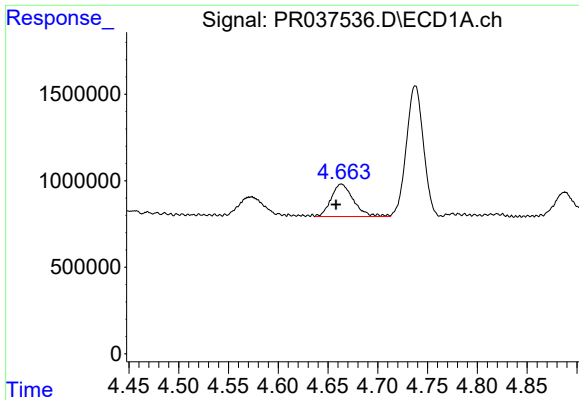
#8 AR-1221-1

R.T.: 4.573 min  
 Delta R.T.: 0.000 min  
 Response: 1936635  
 Conc: 154.89 ng/ml



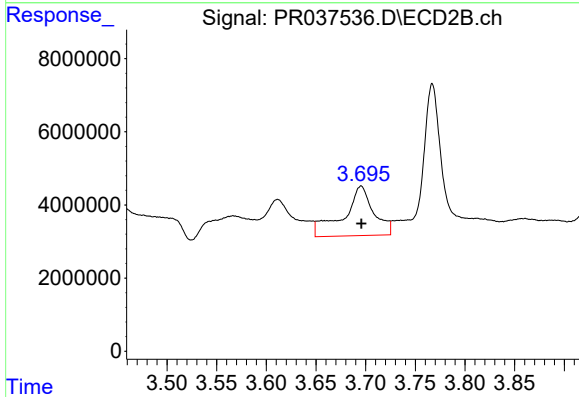
#8 AR-1221-1

R.T.: 3.611 min  
 Delta R.T.: -0.001 min  
 Response: 20584740  
 Conc: 404.27 ng/ml

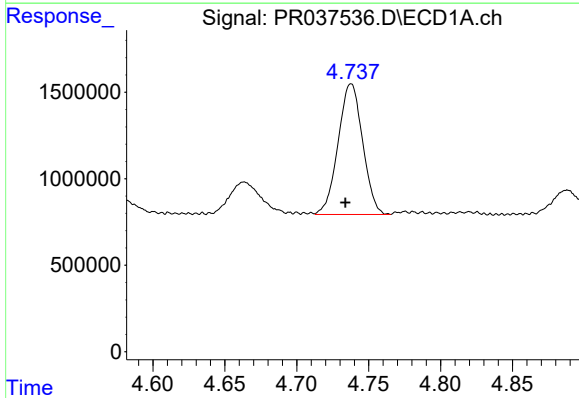


#9 AR-1221-2  
 R.T.: 4.663 min  
 Delta R.T.: 0.005 min  
 Response: 2935815  
 Conc: 324.62 ng/ml

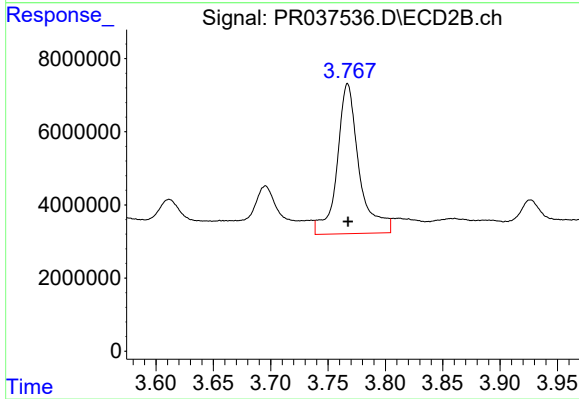
**Instrument :**  
 ECD\_R  
**ClientSampled :**  
 AR1660CCC500



#9 AR-1221-2  
 R.T.: 3.696 min  
 Delta R.T.: 0.000 min  
 Response: 28836480  
 Conc: 776.52 ng/ml

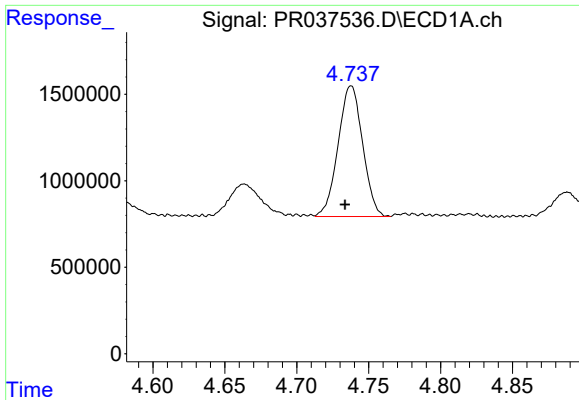


#10 AR-1221-3  
 R.T.: 4.738 min  
 Delta R.T.: 0.004 min  
 Response: 8993149  
 Conc: 293.42 ng/ml



#10 AR-1221-3  
 R.T.: 3.767 min  
 Delta R.T.: 0.000 min  
 Response: 54776061  
 Conc: 447.34 ng/ml

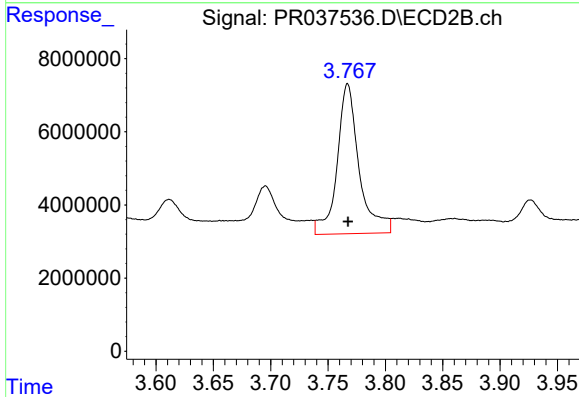




#11 AR-1232-1

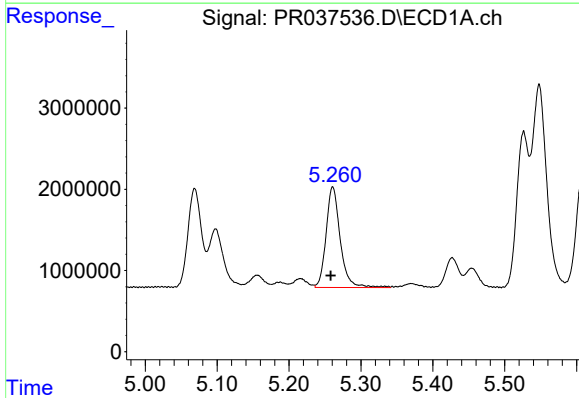
R.T.: 4.738 min  
 Delta R.T.: 0.004 min  
 Response: 8993149  
 Conc: 307.45 ng/ml

Instrument :  
 ECD\_R  
 ClientSampleId :  
 AR1660CCC500



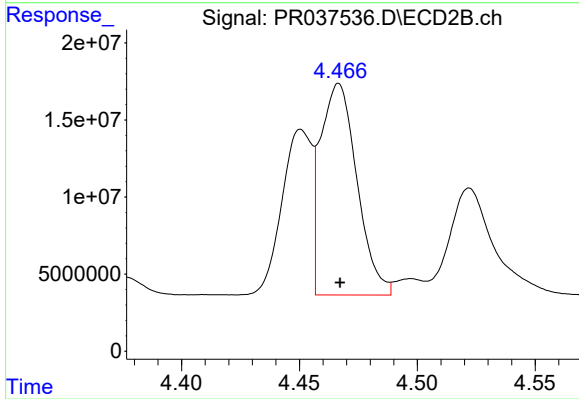
#11 AR-1232-1

R.T.: 3.767 min  
 Delta R.T.: 0.000 min  
 Response: 54776061  
 Conc: 468.21 ng/ml



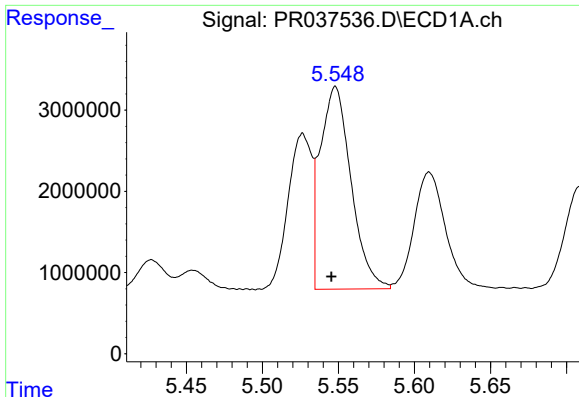
#12 AR-1232-2

R.T.: 5.261 min  
 Delta R.T.: 0.003 min  
 Response: 16965438  
 Conc: 1004.02 ng/ml



#12 AR-1232-2

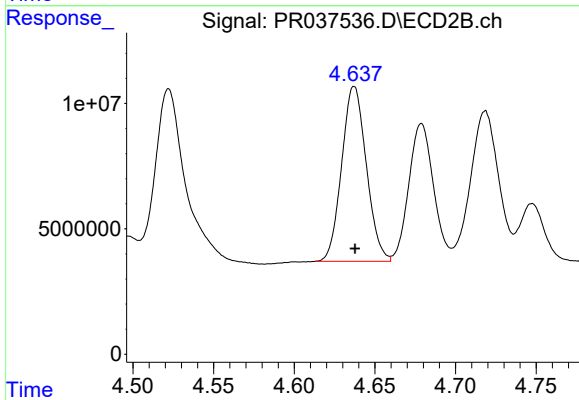
R.T.: 4.467 min  
 Delta R.T.: 0.000 min  
 Response: 147869263  
 Conc: 1069.77 ng/ml



#13 AR-1232-3

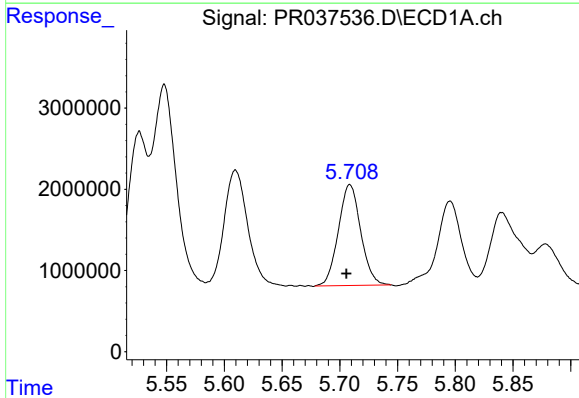
R.T.: 5.548 min  
 Delta R.T.: 0.003 min  
 Response: 35230867  
 Conc: 1042.19 ng/ml

Instrument :  
 ECD\_R  
 ClientSampleId :  
 AR1660CCC500



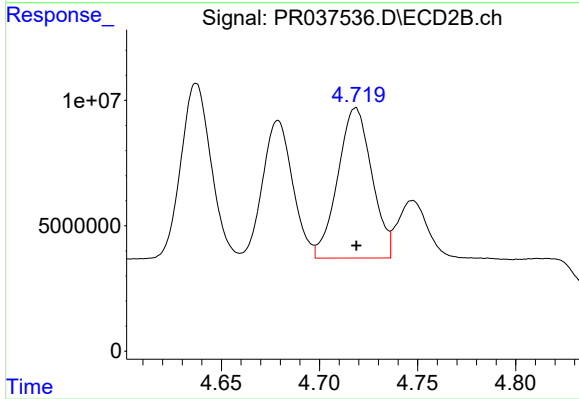
#13 AR-1232-3

R.T.: 4.637 min  
 Delta R.T.: 0.000 min  
 Response: 74276605  
 Conc: 1058.05 ng/ml



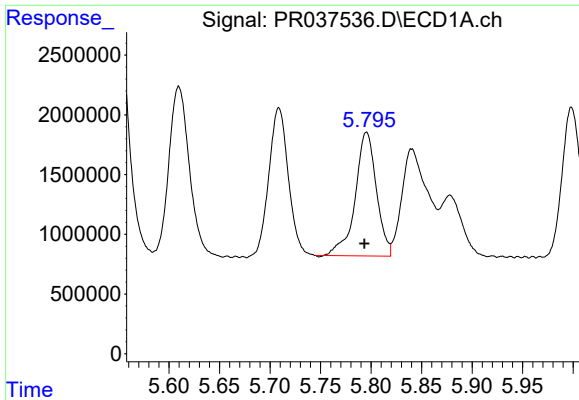
#14 AR-1232-4

R.T.: 5.709 min  
 Delta R.T.: 0.003 min  
 Response: 16759841  
 Conc: 1067.73 ng/ml



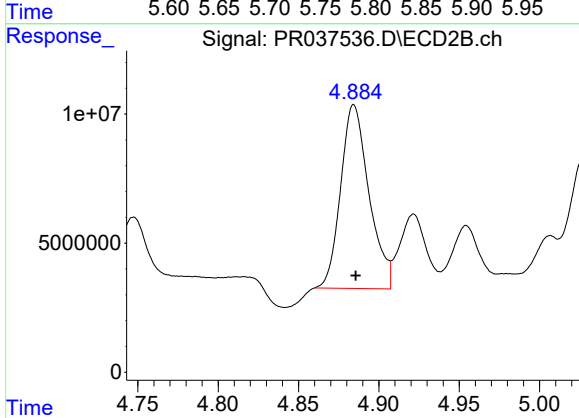
#14 AR-1232-4

R.T.: 4.719 min  
 Delta R.T.: 0.000 min  
 Response: 72268390  
 Conc: 1211.10 ng/ml

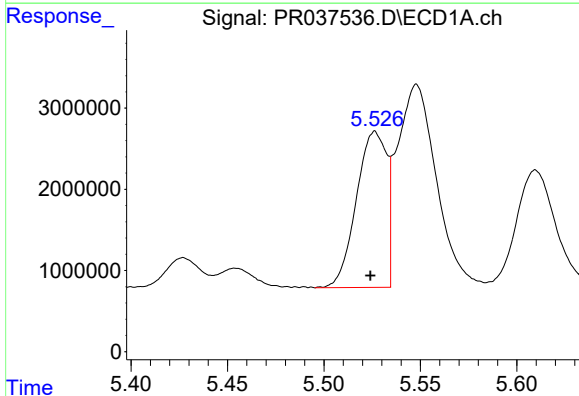


#15 AR-1232-5  
 R.T.: 5.795 min  
 Delta R.T.: 0.002 min  
 Response: 15125986  
 Conc: 1293.30 ng/ml

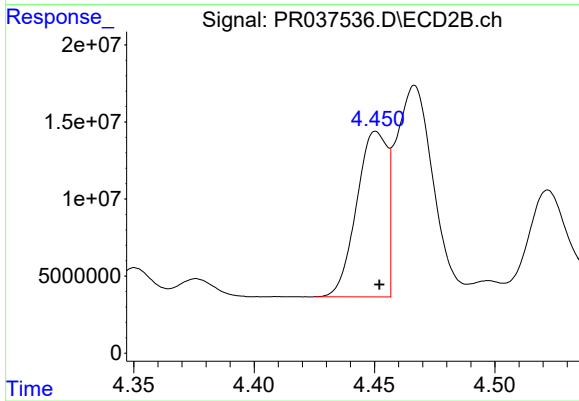
**Instrument :**  
 ECD\_R  
**ClientSampleId :**  
 AR1660CCC500



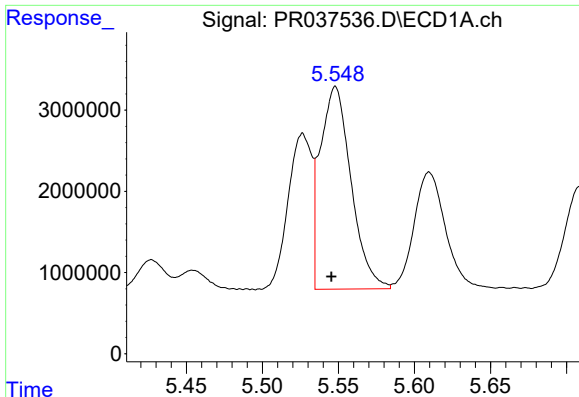
#15 AR-1232-5  
 R.T.: 4.884 min  
 Delta R.T.: -0.001 min  
 Response: 87291184  
 Conc: 1279.11 ng/ml



#16 AR-1242-1  
 R.T.: 5.526 min  
 Delta R.T.: 0.002 min  
 Response: 20879867  
 Conc: 610.26 ng/ml



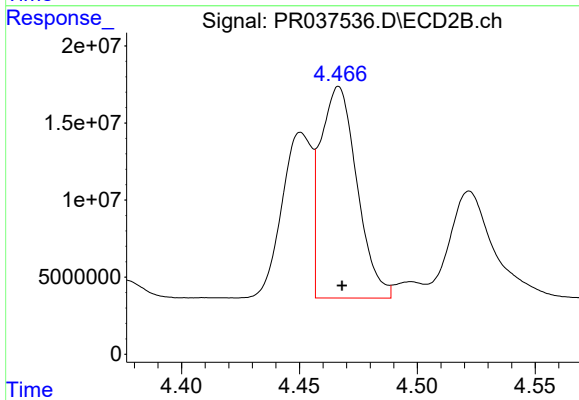
#16 AR-1242-1  
 R.T.: 4.451 min  
 Delta R.T.: -0.001 min  
 Response: 94587106  
 Conc: 645.48 ng/ml



#17 AR-1242-2

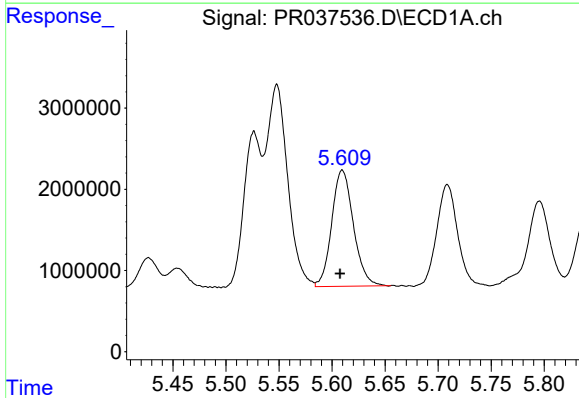
R.T.: 5.548 min  
 Delta R.T.: 0.003 min  
 Response: 35230867  
 Conc: 635.14 ng/ml

Instrument :  
 ECD\_R  
 ClientSampleId :  
 AR1660CCC500



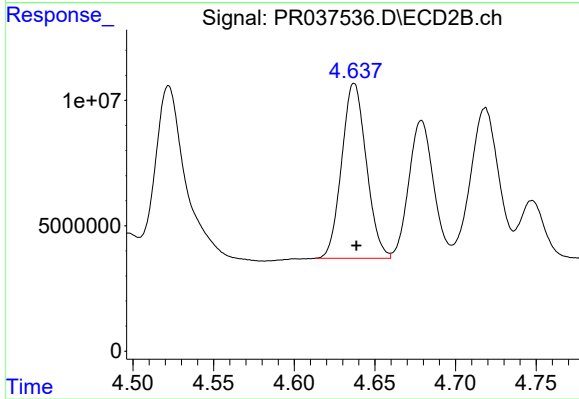
#17 AR-1242-2

R.T.: 4.467 min  
 Delta R.T.: -0.001 min  
 Response: 147869263  
 Conc: 648.09 ng/ml



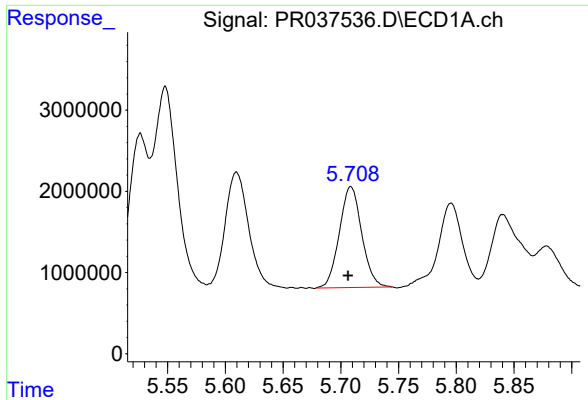
#18 AR-1242-3

R.T.: 5.610 min  
 Delta R.T.: 0.002 min  
 Response: 20334134  
 Conc: 617.78 ng/ml



#18 AR-1242-3

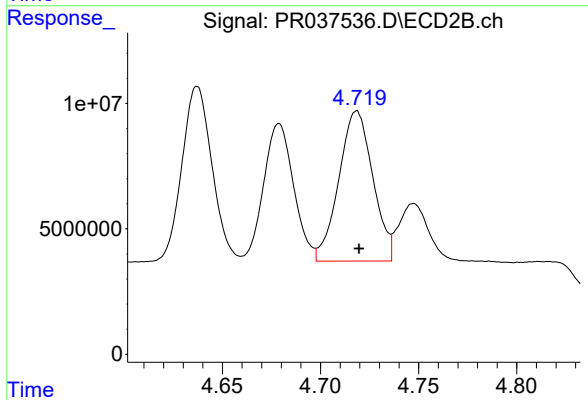
R.T.: 4.637 min  
 Delta R.T.: -0.001 min  
 Response: 74276605  
 Conc: 642.37 ng/ml



#19 AR-1242-4

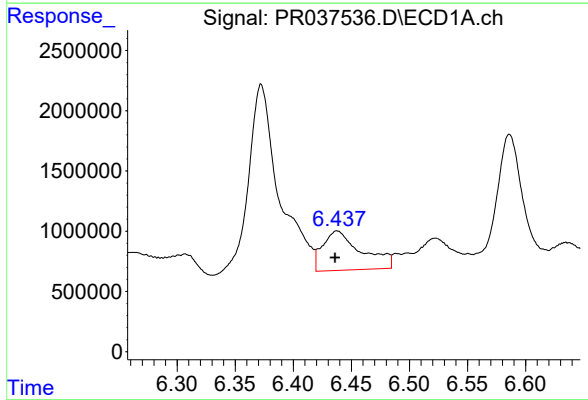
R.T.: 5.709 min  
 Delta R.T.: 0.002 min  
 Response: 16759841  
 Conc: 635.39 ng/ml

Instrument :  
 ECD\_R  
 ClientSampleId :  
 AR1660CCC500



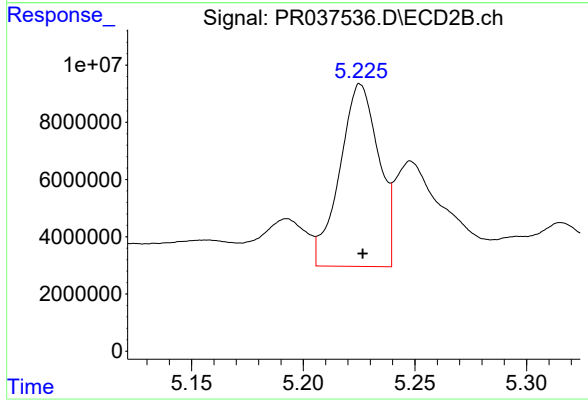
#19 AR-1242-4

R.T.: 4.719 min  
 Delta R.T.: -0.001 min  
 Response: 72268390  
 Conc: 657.52 ng/ml



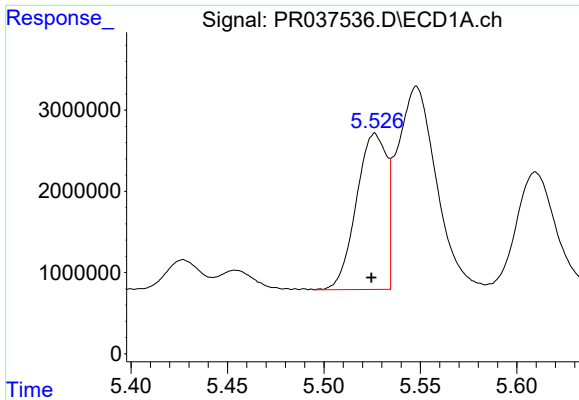
#20 AR-1242-5

R.T.: 6.438 min  
 Delta R.T.: 0.002 min  
 Response: 7575806  
 Conc: 235.43 ng/ml



#20 AR-1242-5

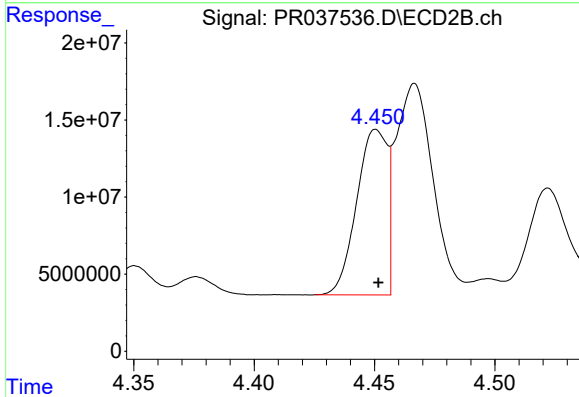
R.T.: 5.226 min  
 Delta R.T.: -0.001 min  
 Response: 77276891  
 Conc: 466.37 ng/ml



#21 AR-1248-1

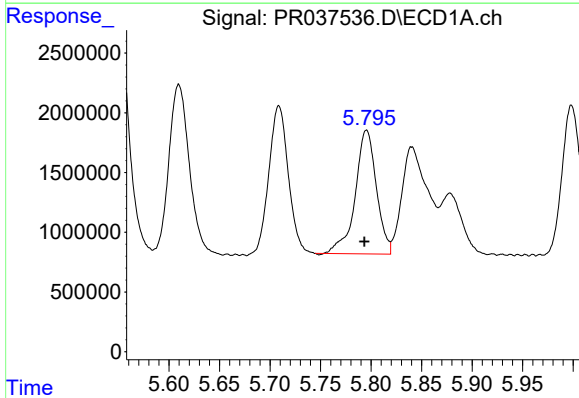
R.T.: 5.526 min  
 Delta R.T.: 0.002 min  
 Response: 20879867  
 Conc: 911.49 ng/ml

**Instrument :**  
 ECD\_R  
**ClientSampled :**  
 AR1660CCC500



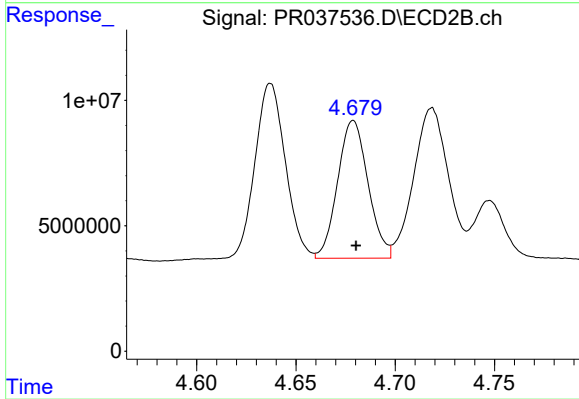
#21 AR-1248-1

R.T.: 4.451 min  
 Delta R.T.: 0.000 min  
 Response: 94587106  
 Conc: 939.63 ng/ml



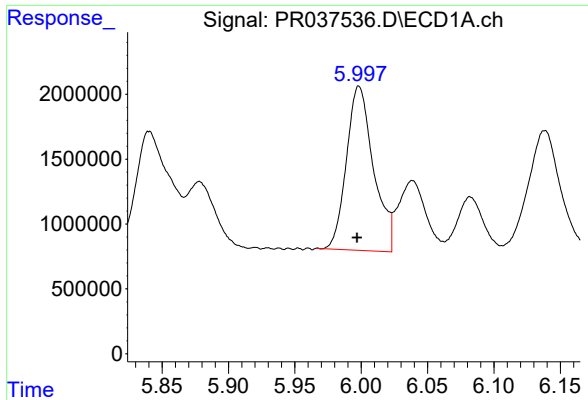
#22 AR-1248-2

R.T.: 5.795 min  
 Delta R.T.: 0.002 min  
 Response: 15125986  
 Conc: 431.99 ng/ml



#22 AR-1248-2

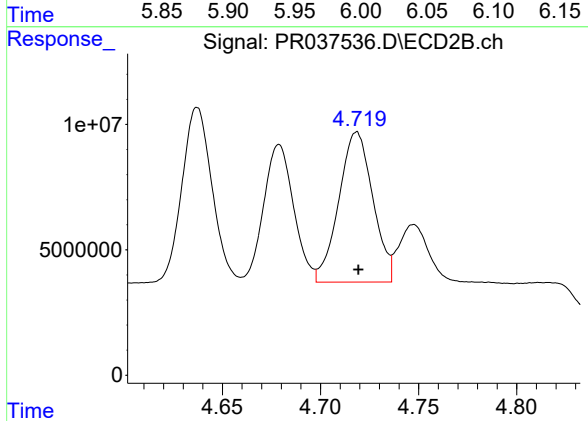
R.T.: 4.679 min  
 Delta R.T.: -0.001 min  
 Response: 58553499  
 Conc: 429.05 ng/ml



#23 AR-1248-3

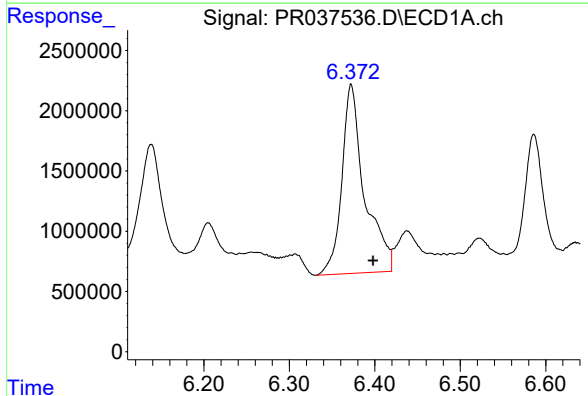
R.T.: 5.998 min  
 Delta R.T.: 0.002 min  
 Response: 18000161  
 Conc: 440.00 ng/ml

Instrument :  
 ECD\_R  
 ClientSampleId :  
 AR1660CCC500



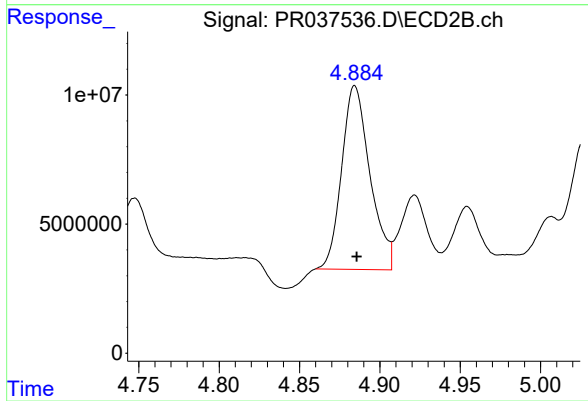
#23 AR-1248-3

R.T.: 4.719 min  
 Delta R.T.: 0.000 min  
 Response: 72268390  
 Conc: 516.30 ng/ml



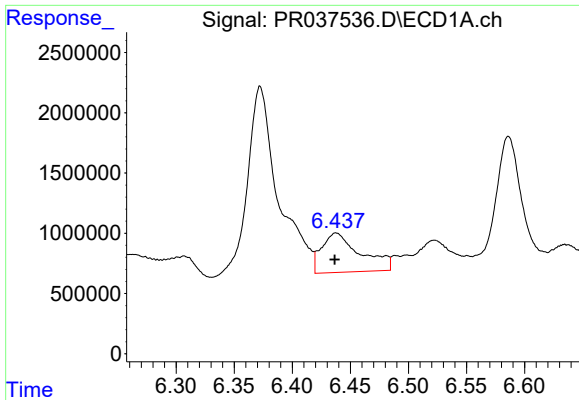
#24 AR-1248-4

R.T.: 6.372 min  
 Delta R.T.: -0.026 min  
 Response: 28882266  
 Conc: 589.98 ng/ml



#24 AR-1248-4

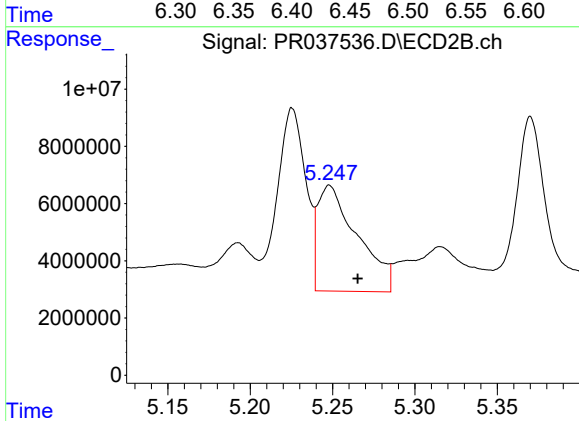
R.T.: 4.884 min  
 Delta R.T.: -0.001 min  
 Response: 87291184  
 Conc: 490.50 ng/ml



#25 AR-1248-5

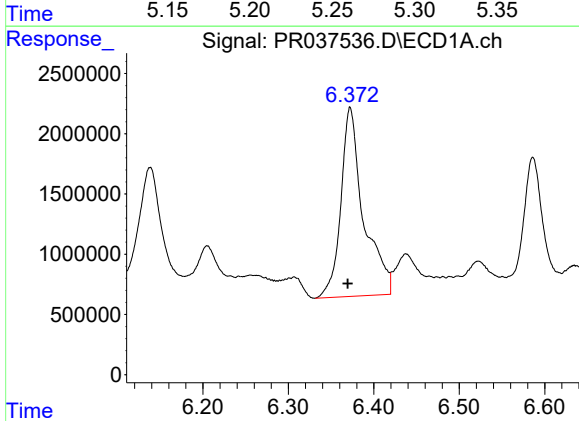
R.T.: 6.438 min  
 Delta R.T.: 0.001 min  
 Response: 7575806  
 Conc: 160.38 ng/ml

**Instrument :**  
 ECD\_R  
**ClientSampleId :**  
 AR1660CCC500



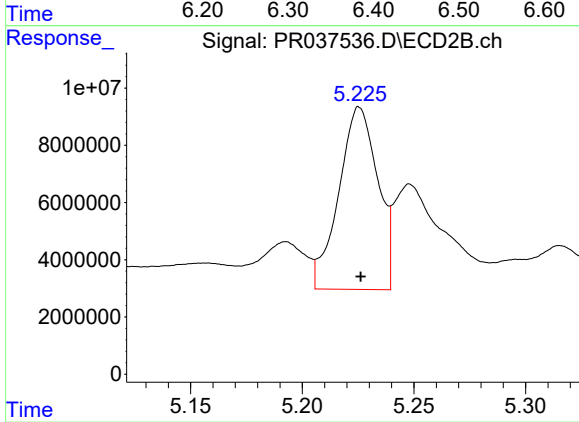
#25 AR-1248-5

R.T.: 5.248 min  
 Delta R.T.: -0.017 min  
 Response: 61959918  
 Conc: 316.75 ng/ml



#26 AR-1254-1

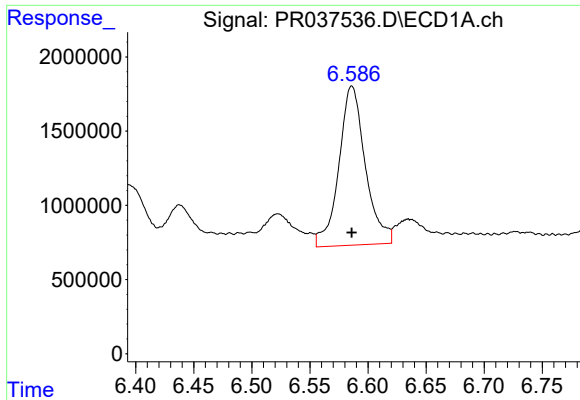
R.T.: 6.372 min  
 Delta R.T.: 0.003 min  
 Response: 28882266  
 Conc: 528.68 ng/ml



#26 AR-1254-1

R.T.: 5.226 min  
 Delta R.T.: 0.000 min  
 Response: 77276891  
 Conc: 224.33 ng/ml

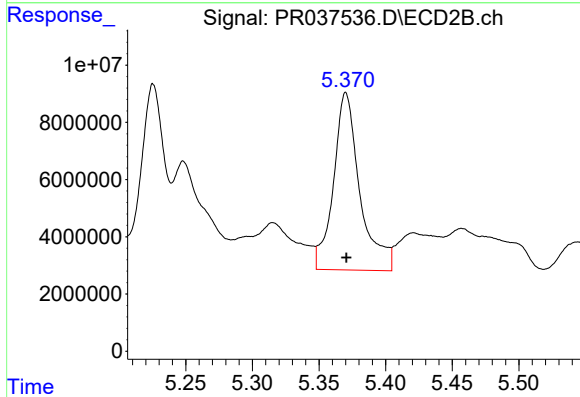




#27 AR-1254-2

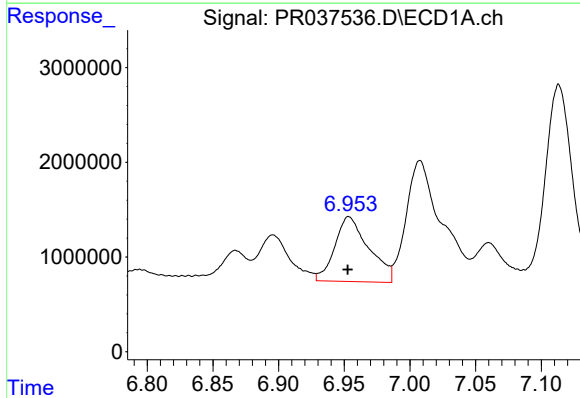
R.T.: 6.586 min  
 Delta R.T.: 0.000 min  
 Response: 17020141  
 Conc: 198.61 ng/ml

Instrument :  
 ECD\_R  
 ClientSampleId :  
 AR1660CCC500



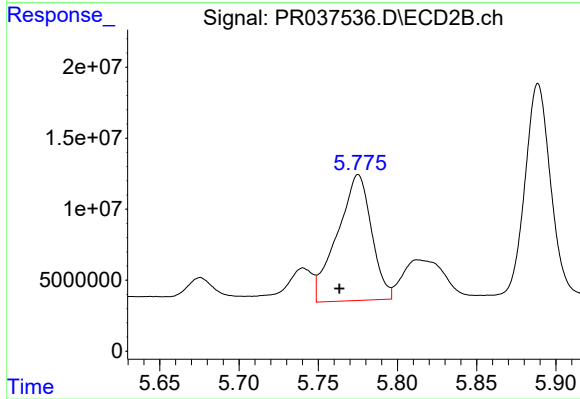
#27 AR-1254-2

R.T.: 5.370 min  
 Delta R.T.: 0.000 min  
 Response: 85443972  
 Conc: 285.29 ng/ml



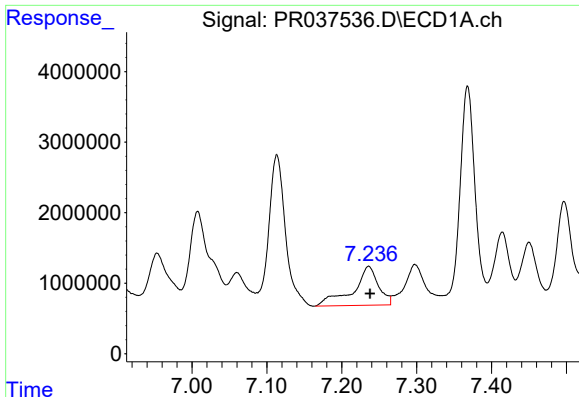
#28 AR-1254-3

R.T.: 6.954 min  
 Delta R.T.: 0.000 min  
 Response: 12346060  
 Conc: 135.73 ng/ml



#28 AR-1254-3

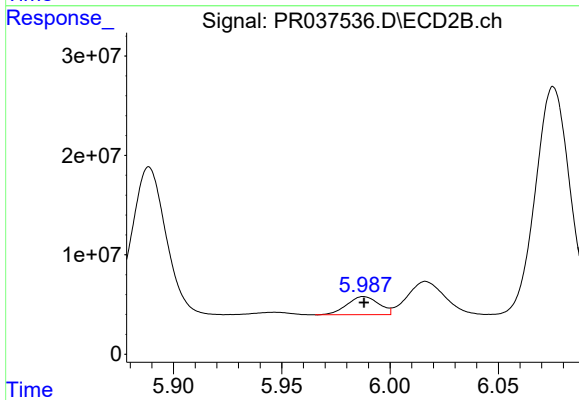
R.T.: 5.775 min  
 Delta R.T.: 0.012 min  
 Response: 132928126  
 Conc: 280.66 ng/ml



#29 AR-1254-4

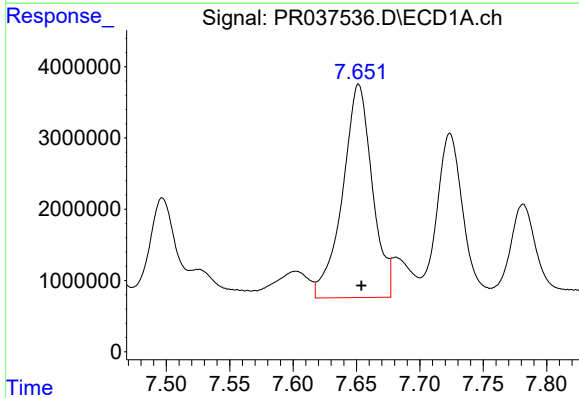
R.T.: 7.236 min  
 Delta R.T.: -0.002 min  
 Response: 13075235  
 Conc: 195.13 ng/ml

Instrument :  
 ECD\_R  
 ClientSampleId :  
 AR1660CCC500



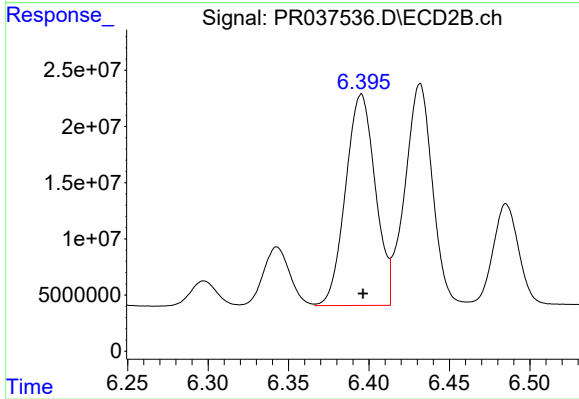
#29 AR-1254-4

R.T.: 5.988 min  
 Delta R.T.: 0.000 min  
 Response: 18605506  
 Conc: 53.06 ng/ml



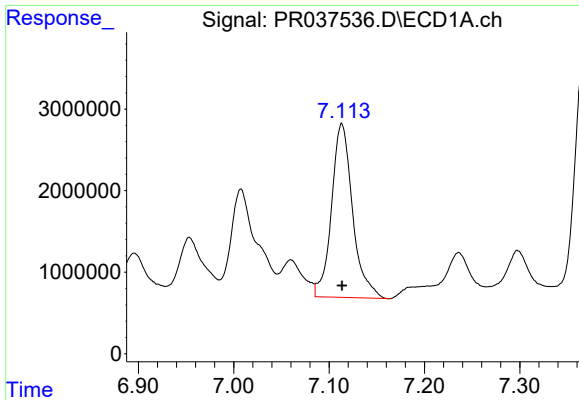
#30 AR-1254-5

R.T.: 7.652 min  
 Delta R.T.: -0.002 min  
 Response: 48802322  
 Conc: 678.93 ng/ml



#30 AR-1254-5

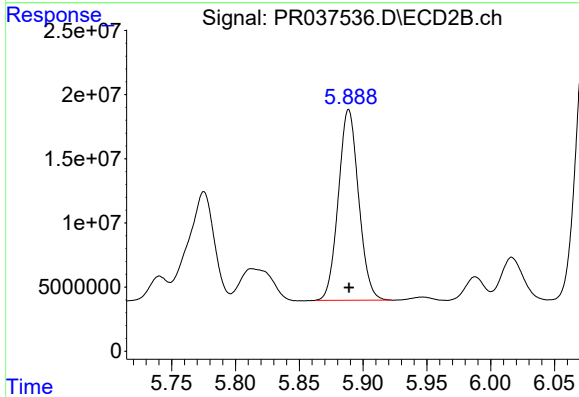
R.T.: 6.395 min  
 Delta R.T.: -0.001 min  
 Response: 242178596  
 Conc: 546.89 ng/ml



#31 AR-1260-1

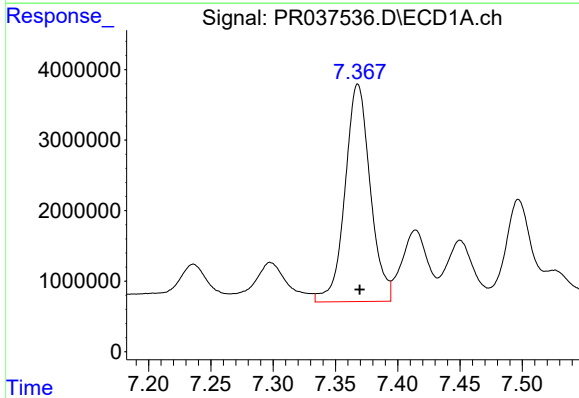
R.T.: 7.113 min  
 Delta R.T.: 0.000 min  
 Response: 32668069  
 Conc: 495.07 ng/ml

Instrument :  
 ECD\_R  
 ClientSampleId :  
 AR1660CCC500



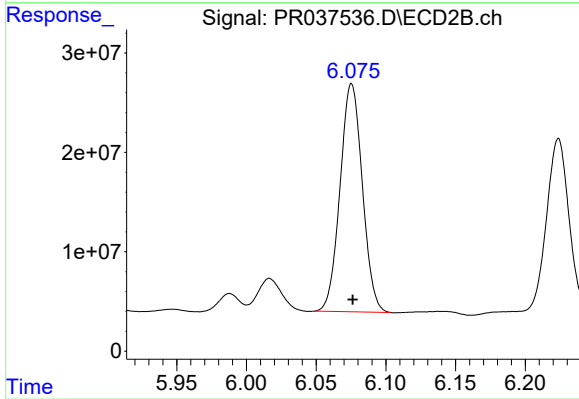
#31 AR-1260-1

R.T.: 5.889 min  
 Delta R.T.: 0.000 min  
 Response: 164523666  
 Conc: 562.90 ng/ml



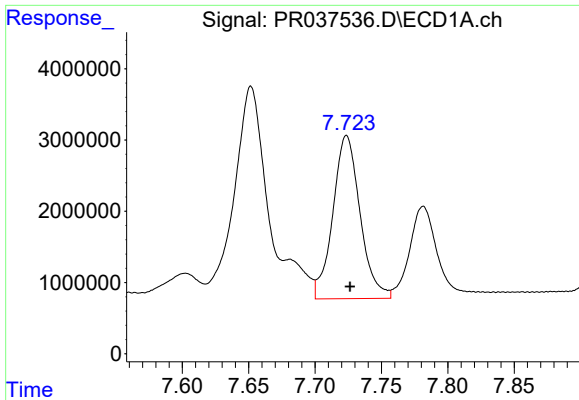
#32 AR-1260-2

R.T.: 7.368 min  
 Delta R.T.: -0.001 min  
 Response: 43432579  
 Conc: 544.93 ng/ml



#32 AR-1260-2

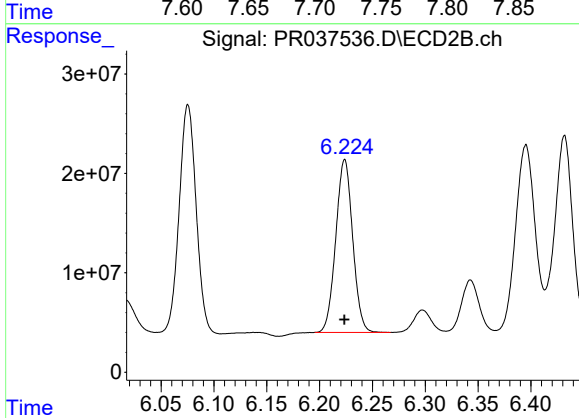
R.T.: 6.075 min  
 Delta R.T.: 0.000 min  
 Response: 255417361  
 Conc: 554.55 ng/ml



#33 AR-1260-3

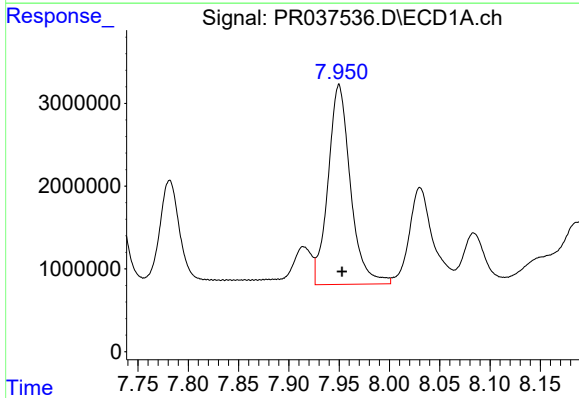
R.T.: 7.724 min  
 Delta R.T.: -0.003 min  
 Response: 32748576  
 Conc: 523.34 ng/ml

**Instrument :**  
 ECD\_R  
**ClientSampleId :**  
 AR1660CCC500



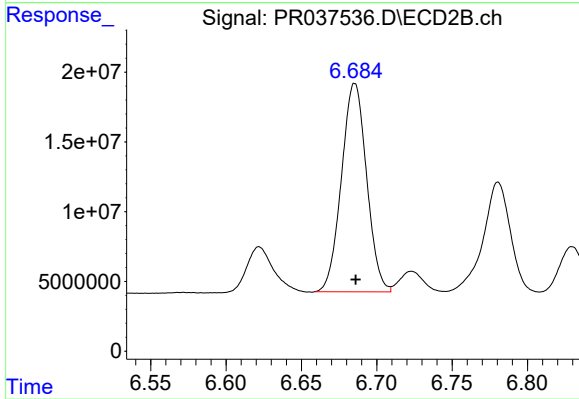
#33 AR-1260-3

R.T.: 6.224 min  
 Delta R.T.: 0.000 min  
 Response: 193861340  
 Conc: 543.79 ng/ml



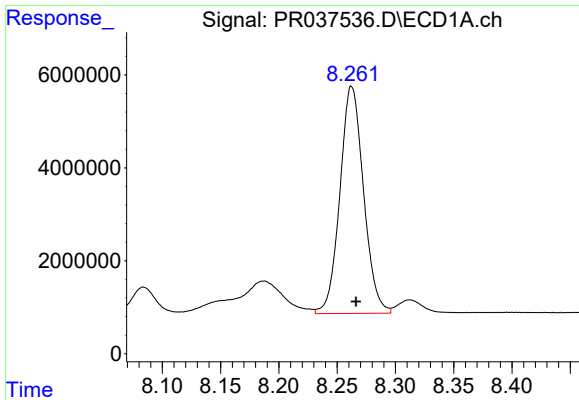
#34 AR-1260-4

R.T.: 7.950 min  
 Delta R.T.: -0.003 min  
 Response: 37330651  
 Conc: 501.73 ng/ml



#34 AR-1260-4

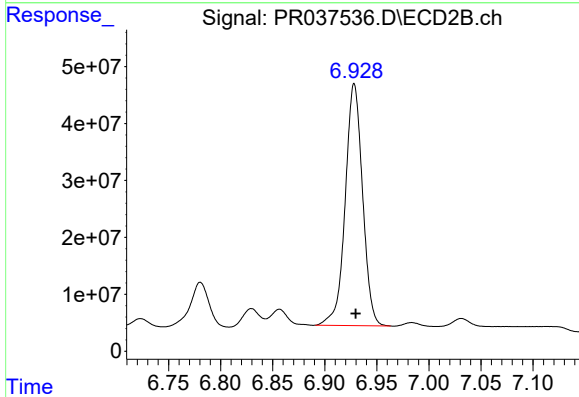
R.T.: 6.685 min  
 Delta R.T.: 0.000 min  
 Response: 173609956  
 Conc: 569.65 ng/ml



#35 AR-1260-5

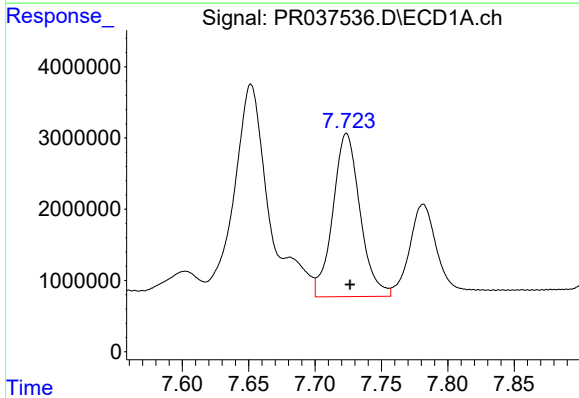
R.T.: 8.262 min  
 Delta R.T.: -0.004 min  
 Response: 69032872  
 Conc: 477.33 ng/ml

Instrument :  
 ECD\_R  
 ClientSampleId :  
 AR1660CCC500



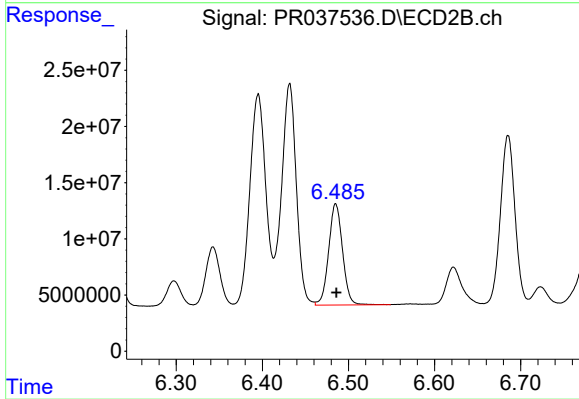
#35 AR-1260-5

R.T.: 6.928 min  
 Delta R.T.: -0.001 min  
 Response: 492623055  
 Conc: 568.03 ng/ml



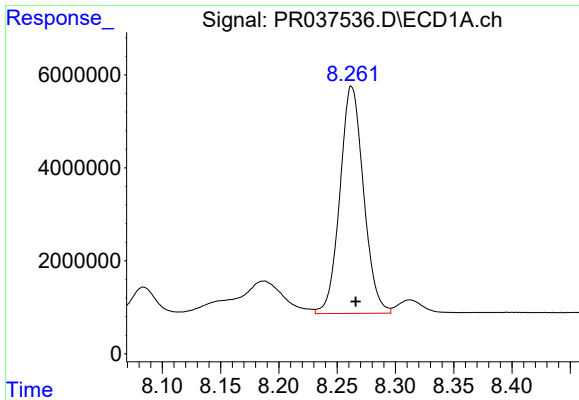
#36 AR-1262-1

R.T.: 7.724 min  
 Delta R.T.: -0.003 min  
 Response: 32748576  
 Conc: 313.52 ng/ml



#36 AR-1262-1

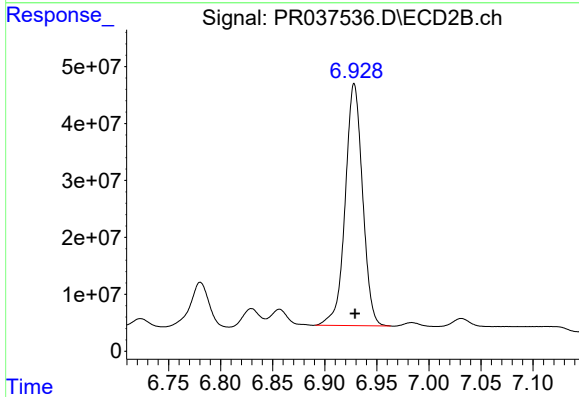
R.T.: 6.485 min  
 Delta R.T.: 0.000 min  
 Response: 100830615  
 Conc: 402.32 ng/ml



#37 AR-1262-2

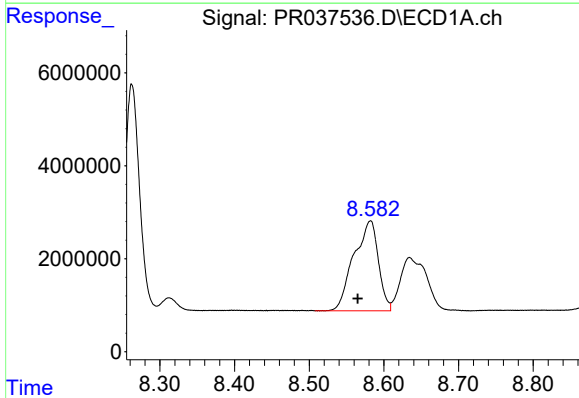
R.T.: 8.262 min  
 Delta R.T.: -0.003 min  
 Response: 69032872  
 Conc: 355.13 ng/ml

Instrument :  
 ECD\_R  
 ClientSampleId :  
 AR1660CCC500



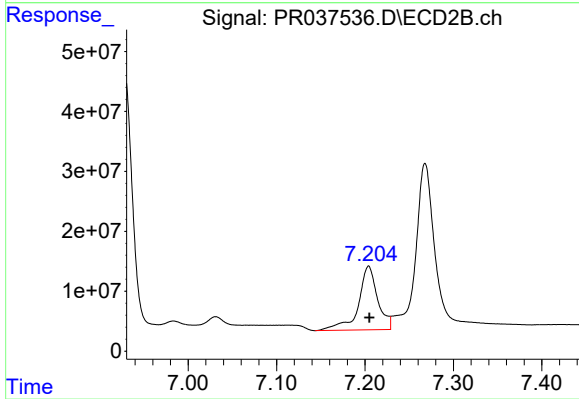
#37 AR-1262-2

R.T.: 6.928 min  
 Delta R.T.: 0.000 min  
 Response: 492623055  
 Conc: 392.23 ng/ml



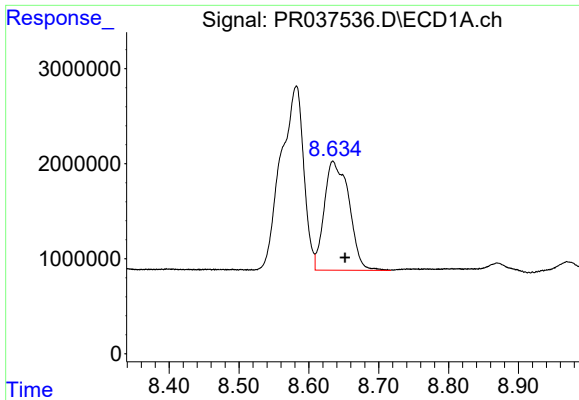
#38 AR-1262-3

R.T.: 8.582 min  
 Delta R.T.: 0.017 min  
 Response: 44147146  
 Conc: 335.69 ng/ml



#38 AR-1262-3

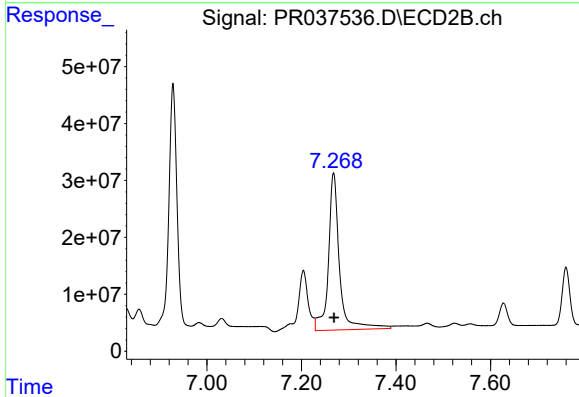
R.T.: 7.204 min  
 Delta R.T.: 0.000 min  
 Response: 161228249  
 Conc: 294.07 ng/ml



#39 AR-1262-4

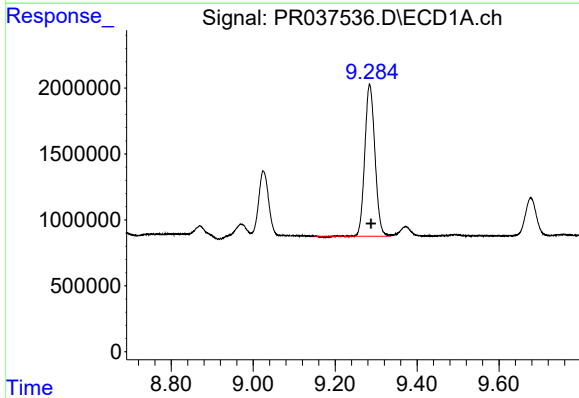
R.T.: 8.634 min  
Delta R.T.: -0.017 min  
Response: 28267525  
Conc: 287.77 ng/ml

Instrument :  
ECD\_R  
ClientSampleId :  
AR1660CCC500



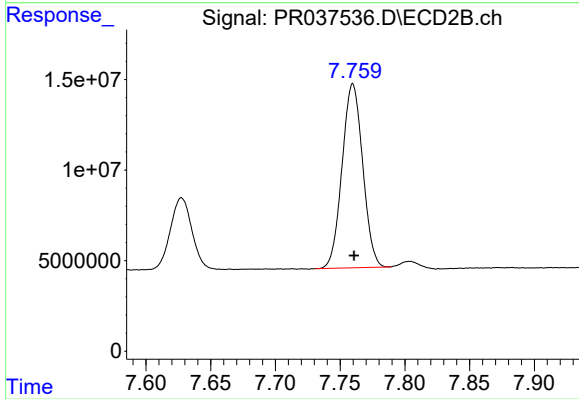
#39 AR-1262-4

R.T.: 7.268 min  
Delta R.T.: -0.001 min  
Response: 448261637  
Conc: 499.38 ng/ml



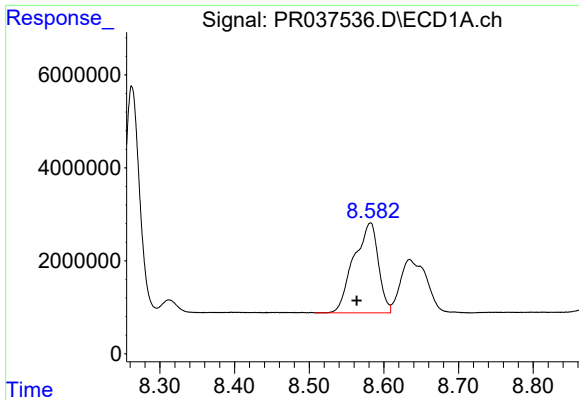
#40 AR-1262-5

R.T.: 9.284 min  
Delta R.T.: -0.003 min  
Response: 19687254  
Conc: 285.16 ng/ml



#40 AR-1262-5

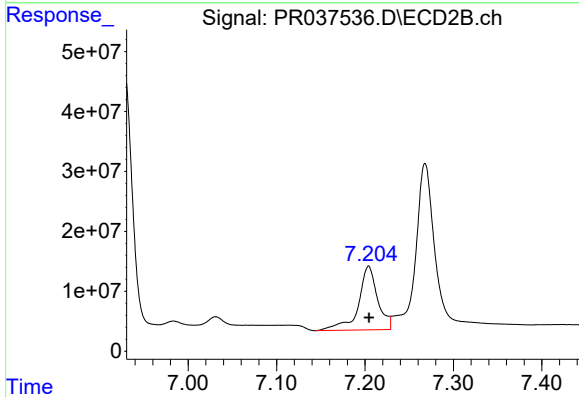
R.T.: 7.760 min  
Delta R.T.: -0.001 min  
Response: 112549357  
Conc: 294.16 ng/ml



#41 AR-1268-1

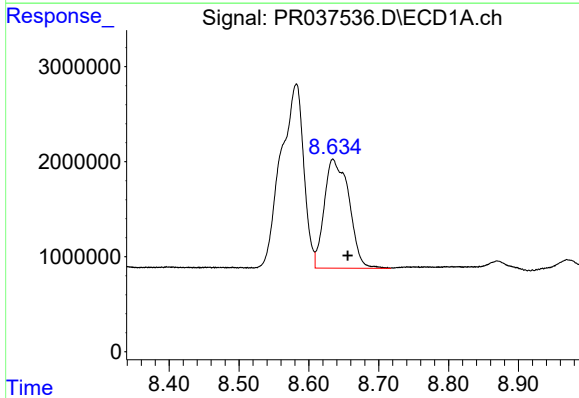
R.T.: 8.582 min  
 Delta R.T.: 0.018 min  
 Response: 44147146  
 Conc: 246.51 ng/ml

Instrument :  
 ECD\_R  
 ClientSampleId :  
 AR1660CCC500



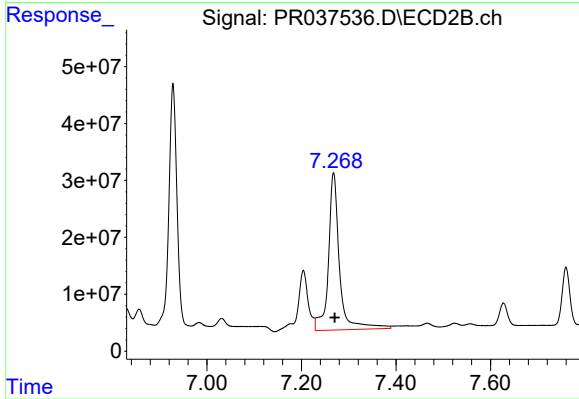
#41 AR-1268-1

R.T.: 7.204 min  
 Delta R.T.: 0.000 min  
 Response: 161228249  
 Conc: 130.97 ng/ml



#42 AR-1268-2

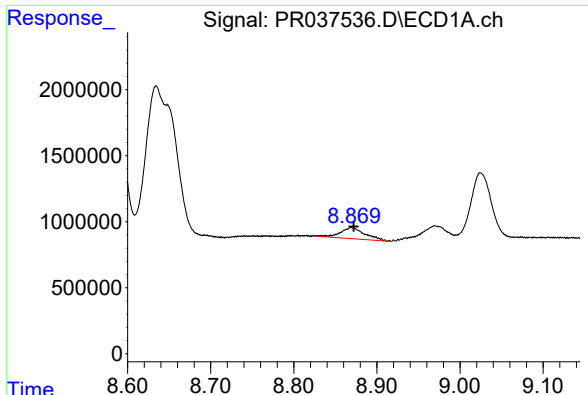
R.T.: 8.634 min  
 Delta R.T.: -0.021 min  
 Response: 28267525  
 Conc: 171.84 ng/ml



#42 AR-1268-2

R.T.: 7.268 min  
 Delta R.T.: -0.002 min  
 Response: 448261637  
 Conc: 423.32 ng/ml

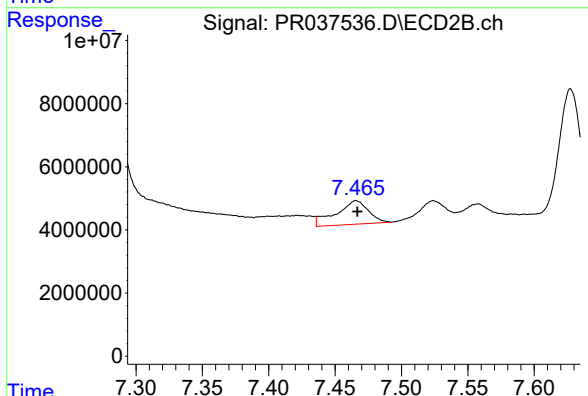




#43 AR-1268-3

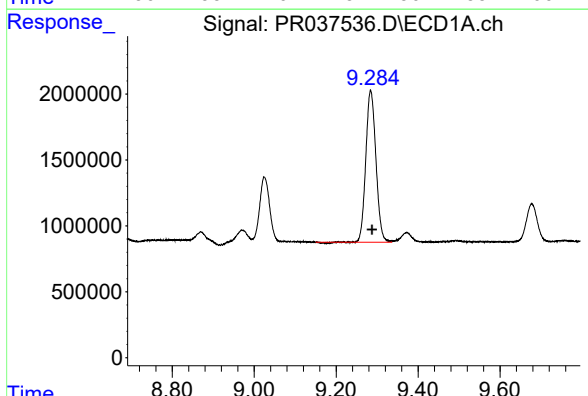
R.T.: 8.870 min  
 Delta R.T.: -0.002 min  
 Response: 1716024  
 Conc: 12.40 ng/ml

Instrument :  
 ECD\_R  
 ClientSampleId :  
 AR1660CCC500



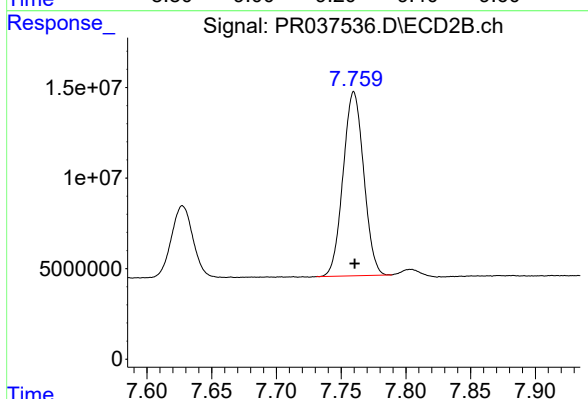
#43 AR-1268-3

R.T.: 7.466 min  
 Delta R.T.: 0.000 min  
 Response: 12669315  
 Conc: 14.30 ng/ml



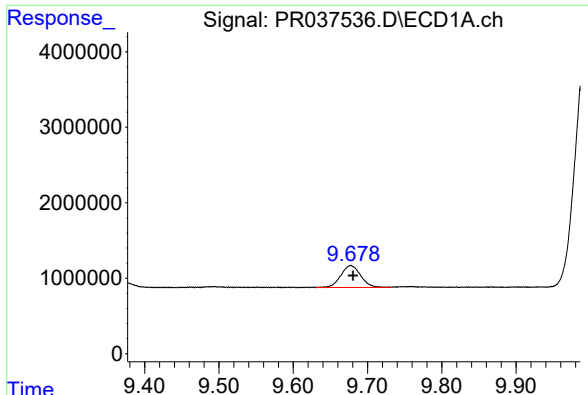
#44 AR-1268-4

R.T.: 9.284 min  
 Delta R.T.: -0.004 min  
 Response: 19687254  
 Conc: 315.57 ng/ml



#44 AR-1268-4

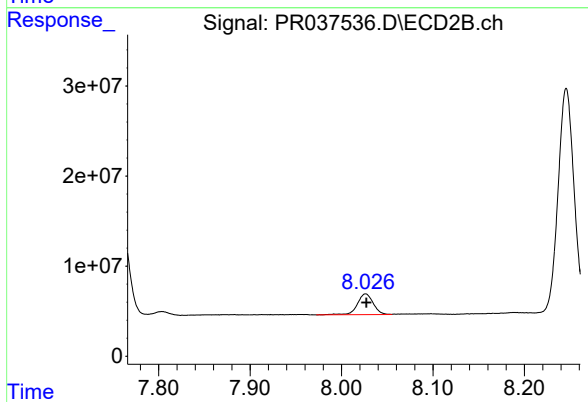
R.T.: 7.760 min  
 Delta R.T.: 0.000 min  
 Response: 112549357  
 Conc: 310.24 ng/ml



#45 AR-1268-5

R.T.: 9.677 min  
Delta R.T.: -0.003 min  
Response: 5365093  
Conc: 11.77 ng/ml

Instrument :  
ECD\_R  
ClientSampleId :  
AR1660CCC500



#45 AR-1268-5

R.T.: 8.026 min  
Delta R.T.: 0.000 min  
Response: 28007949  
Conc: 11.01 ng/ml