

Data Path : Z:\pestpcbsrv\HPCHEM1\ECD_R\Data\PR050219\
 Data File : PR037543.D
 Signal(s) : Signal #1: ECD1A.ch Signal #2: ECD2B.ch
 Acq On : 02 May 2019 11:04
 Operator : SM\SJ
 Sample : K2583-03 10X
 Misc :
 ALS Vial : 8 Sample Multiplier: 1

Instrument :
 ECD_R
 ClientSampled :
 30104

Integration File signal 1: autoint1.e
 Integration File signal 2: autoint2.e
 Quant Time: May 03 00:53:29 2019
 Quant Method : Z:\pestpcbsrv\HPCHEM1\ECD_R\Method\PR042219.M
 Quant Title : GC EXTRACTABLES
 QLast Update : Mon Apr 22 17:27:39 2019
 Response via : Initial Calibration
 Integrator: ChemStation

Volume Inj. : 2 µl
 Signal #1 Phase : ZB-MR1 Signal #2 Phase: ZB-MR2
 Signal #1 Info : 30Mx0.32mmx 0.50µ Signal #2 Info : 30M x 0.32mm x 0.25µm

Compound	RT#1	RT#2	Resp#1	Resp#2	ng/ml	ng/ml
System Monitoring Compounds						
1) SA Tetrachlo...	4.364	3.410	3037599	8923784	2.428	1.861
2) SA Decachlor...	9.990	8.245	3819214	8202325	2.888	1.408 #
Target Compounds						
3) L1 AR-1016-1	0.000	4.485	0	1196602	N.D.	6.572 #
4) L1 AR-1016-2	0.000	4.485	0	1196602	N.D.	4.241 #
6) L1 AR-1016-4	5.716	4.698	1400441	6432176	42.644	58.139 #
7) L1 AR-1016-5	0.000	4.897	0	133947	N.D.	0.881 #
8) L2 AR-1221-1	0.000	3.593	0	1355727	N.D.	26.625 #
9) L2 AR-1221-2	0.000	3.700	0	2405168	N.D.	64.767 #
10) L2 AR-1221-3	0.000	3.771	0	3925295	N.D.	32.057 #
11) L3 AR-1232-1	0.000	3.771	0	3925295	N.D.	33.552 #
14) L3 AR-1232-4	5.716	4.698	1400441	6432176	89.219	107.793
15) L3 AR-1232-5	0.000	4.897	0	133947	N.D.	1.963 #
16) L4 AR-1242-1	0.000	4.485	0	1196602	N.D.	8.166 #
17) L4 AR-1242-2	0.000	4.485	0	1196602	N.D.	5.245 #
19) L4 AR-1242-4	5.716	4.698	1400441	6432176	53.092	58.522
20) L4 AR-1242-5	0.000	5.213	0	2550320	N.D.	15.391 #
21) L5 AR-1248-1	0.000	4.485	0	1196602	N.D.	11.887 #
22) L5 AR-1248-2	0.000	4.698	0	6432176	N.D.	47.131 #
23) L5 AR-1248-3	0.000	4.698	0	6432176	N.D.	45.953 #
24) L5 AR-1248-4	0.000	4.897	0	133947	N.D.	0.753 #
25) L5 AR-1248-5	0.000	5.282	0	2563508	N.D.	13.105 #
26) L6 AR-1254-1	0.000	5.213	0	2550320	N.D.	7.404 #
27) L6 AR-1254-2	6.644	5.354	694760	2025471	8.107	6.763
28) L6 AR-1254-3	6.973	5.778	1318481	1111312	14.495	2.346 #
29) L6 AR-1254-4	7.223	5.994	4704208	165404	70.203	0.472 #
30) L6 AR-1254-5	7.631	6.417	821929	351409	11.435	0.794 #
31) L7 AR-1260-1	0.000	5.906	0	78130	N.D.	0.267 #
32) L7 AR-1260-2	7.390	6.069	458613	306303	5.754	0.665 #
33) L7 AR-1260-3	7.792	6.220	669758	798273	10.703	2.239 #
34) L7 AR-1260-4	7.974	6.657	1481546	50803	19.912	0.167 #
35) L7 AR-1260-5	8.323	6.876	1256592	57590	8.689	0.066 #
36) L8 AR-1262-1	7.792	6.490	669758	8436934	6.412	33.664 #
37) L8 AR-1262-2	8.323	6.876	1256592	57590	6.464	0.046 #
38) L8 AR-1262-3	8.576	7.161	1909449	10523548	14.519	19.194 #
39) L8 AR-1262-4	0.000	7.252	0	1127570	N.D.	1.256 #
40) L8 AR-1262-5	0.000	7.754	0	535706	N.D.	1.400 #
41) L9 AR-1268-1	8.576	7.161	1909449	10523548	10.662	8.549
42) L9 AR-1268-2	0.000	7.252	0	1127570	N.D.	1.065 #
43) L9 AR-1268-3	0.000	7.465	0	643599	N.D.	0.726 #
44) L9 AR-1268-4	0.000	7.754	0	535706	N.D.	1.477 #
45) L9 AR-1268-5	0.000	8.031	0	446154	N.D.	0.175 #

Data Path : Z:\pestpcbsrv\HPCHEM1\ECD_R\Data\PR050219\
 Data File : PR037543.D
 Signal(s) : Signal #1: ECD1A.ch Signal #2: ECD2B.ch
 Acq On : 02 May 2019 11:04
 Operator : SM\SJ
 Sample : K2583-03 10X
 Misc :
 ALS Vial : 8 Sample Multiplier: 1

Instrument :
 ECD_R
 ClientSampleId :
 30104

Integration File signal 1: autoint1.e
 Integration File signal 2: autoint2.e
 Quant Time: May 03 00:53:29 2019
 Quant Method : Z:\pestpcbsrv\HPCHEM1\ECD_R\Method\PR042219.M
 Quant Title : GC EXTRACTABLES
 QLast Update : Mon Apr 22 17:27:39 2019
 Response via : Initial Calibration
 Integrator: ChemStation

Volume Inj. : 2 µl
 Signal #1 Phase : ZB-MR1 Signal #2 Phase: ZB-MR2
 Signal #1 Info : 30Mx0.32mmx 0.50µ Signal #2 Info : 30M x 0.32mm x 0.25µm

Compound	RT#1	RT#2	Resp#1	Resp#2	ng/ml	ng/ml
----------	------	------	--------	--------	-------	-------

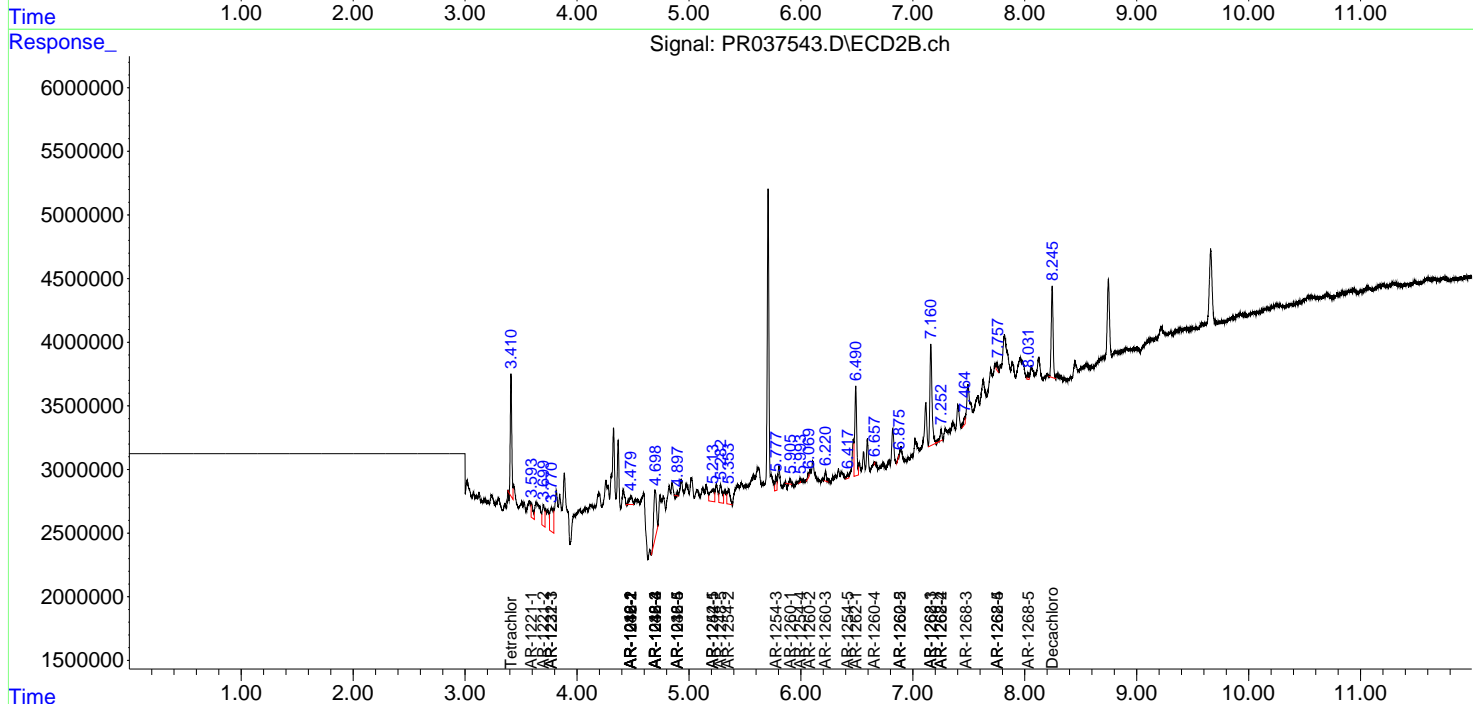
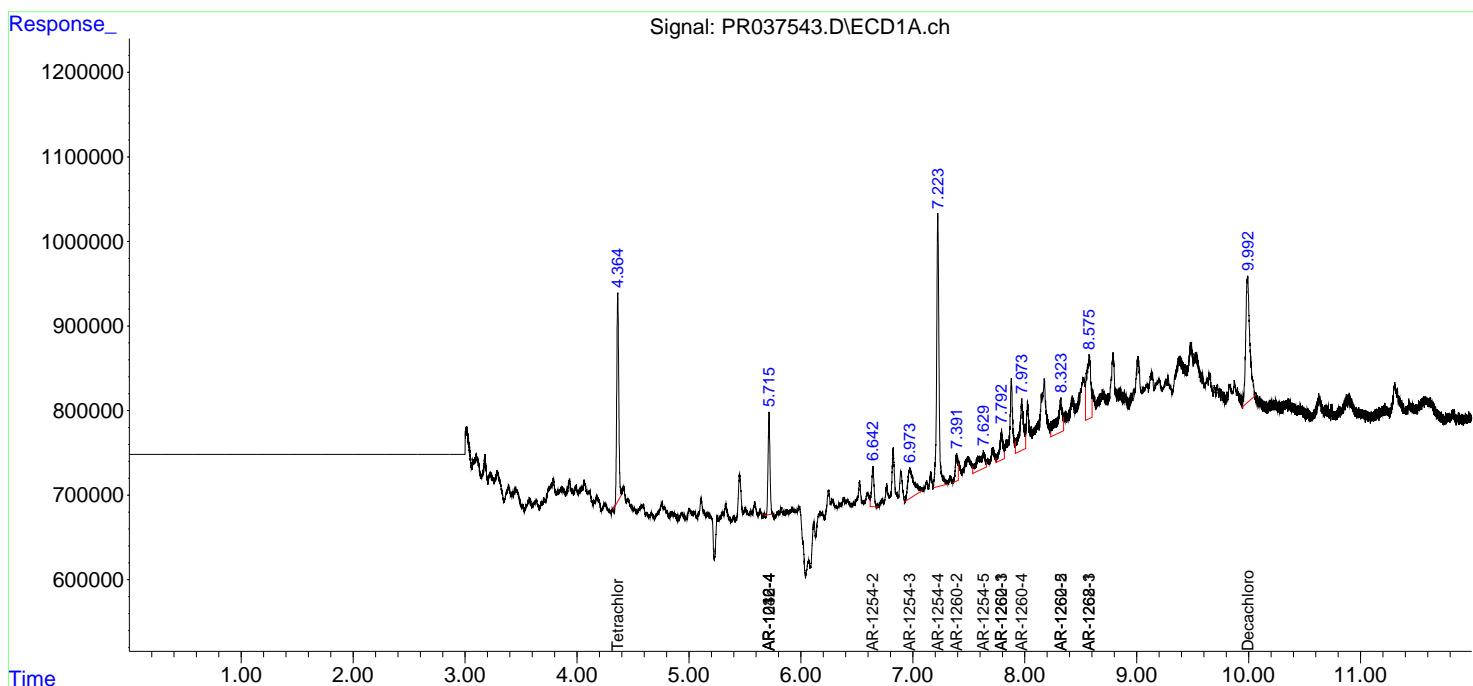
(f)=RT Delta > 1/2 Window (#)=Amounts differ by > 25% (m)=manual int.

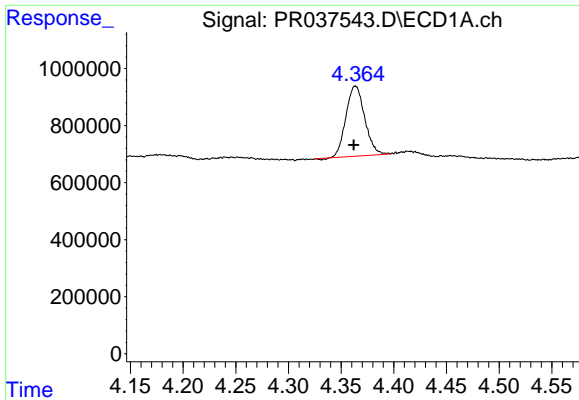
Data Path : Z:\pestpcbsrv\HPCHEM1\ECD_R\Data\PR050219\
 Data File : PR037543.D
 Signal(s) : Signal #1: ECD1A.ch Signal #2: ECD2B.ch
 Acq On : 02 May 2019 11:04
 Operator : SM\SJ
 Sample : K2583-03 10X
 Misc :
 ALS Vial : 8 Sample Multiplier: 1

Instrument :
 ECD_R
 ClientSampled :
 30104

Integration File signal 1: autoint1.e
 Integration File signal 2: autoint2.e
 Quant Time: May 03 00:53:29 2019
 Quant Method : Z:\pestpcbsrv\HPCHEM1\ECD_R\Method\PR042219.M
 Quant Title : GC EXTRACTABLES
 QLast Update : Mon Apr 22 17:27:39 2019
 Response via : Initial Calibration
 Integrator: ChemStation

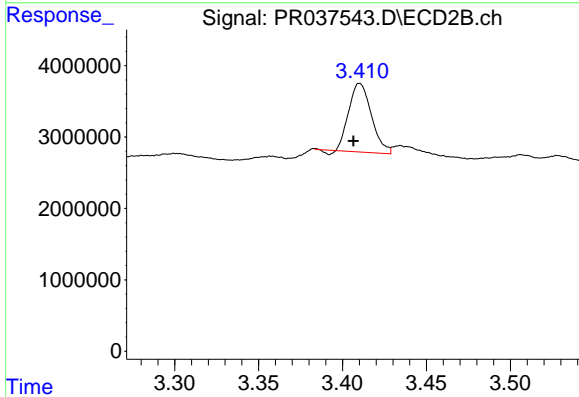
Volume Inj. : 2 µl
 Signal #1 Phase : ZB-MR1 Signal #2 Phase: ZB-MR2
 Signal #1 Info : 30Mx0.32mmx 0.50µ Signal #2 Info : 30M x 0.32mm x 0.25µm



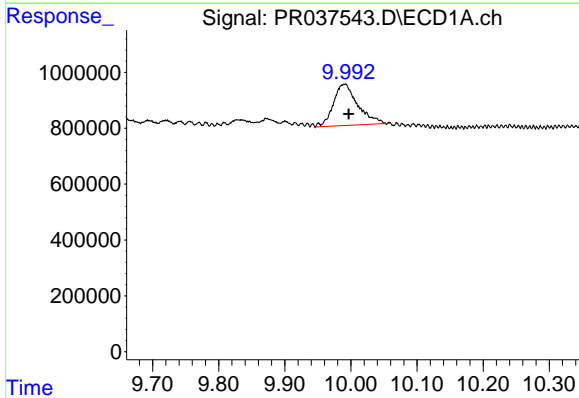


#1 Tetrachloro-m-xylene
 R.T.: 4.364 min
 Delta R.T.: 0.002 min
 Response: 3037599
 Conc: 2.43 ng/ml

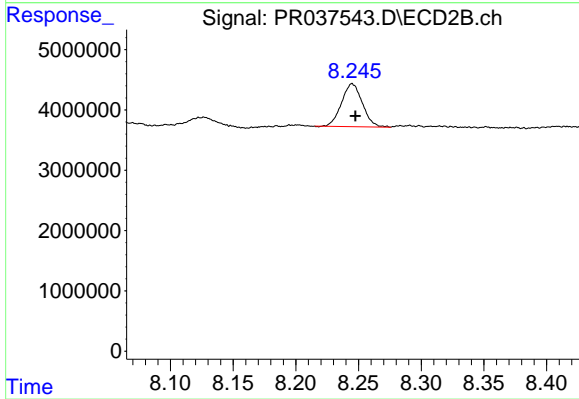
Instrument :
 ECD_R
 ClientSampleId :
 30104



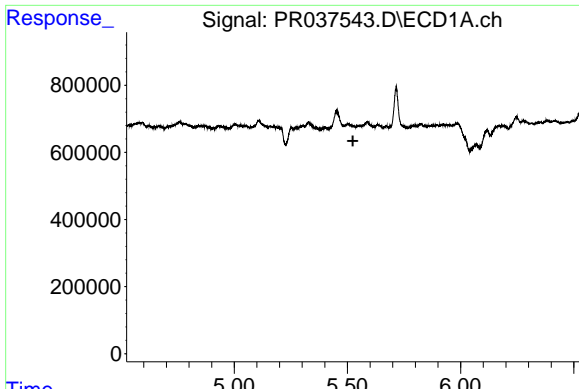
#1 Tetrachloro-m-xylene
 R.T.: 3.410 min
 Delta R.T.: 0.004 min
 Response: 8923784
 Conc: 1.86 ng/ml



#2 Decachlorobiphenyl
 R.T.: 9.990 min
 Delta R.T.: -0.007 min
 Response: 3819214
 Conc: 2.89 ng/ml



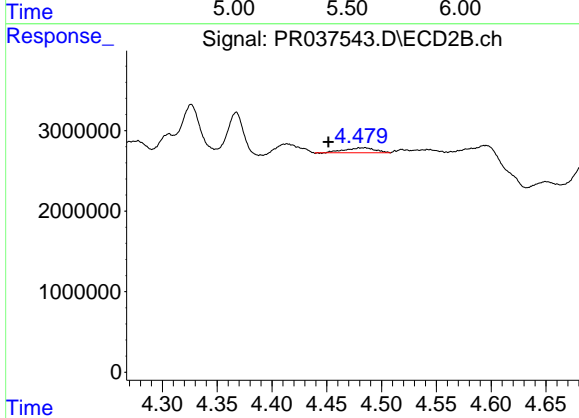
#2 Decachlorobiphenyl
 R.T.: 8.245 min
 Delta R.T.: -0.003 min
 Response: 8202325
 Conc: 1.41 ng/ml



#3 AR-1016-1

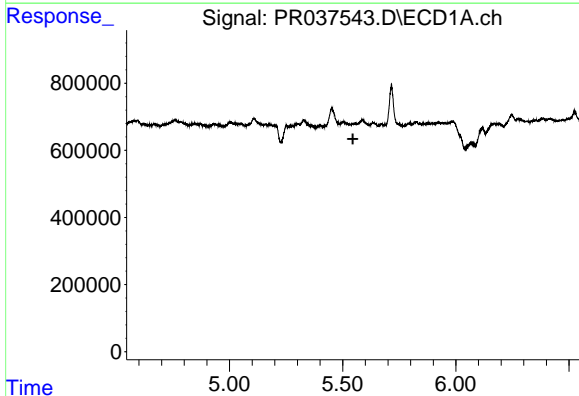
R.T.: 0.000 min
 Exp R.T. : 5.524 min
 Response: 0
 Conc: N.D.

Instrument :
 ECD_R
 ClientSampleId :
 30104



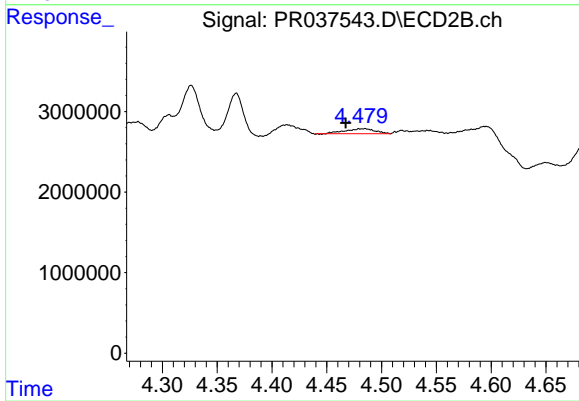
#3 AR-1016-1

R.T.: 4.485 min
 Delta R.T.: 0.034 min
 Response: 1196602
 Conc: 6.57 ng/ml



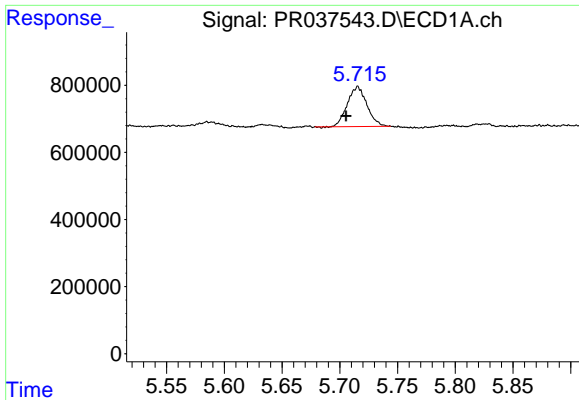
#4 AR-1016-2

R.T.: 0.000 min
 Exp R.T. : 5.545 min
 Response: 0
 Conc: N.D.



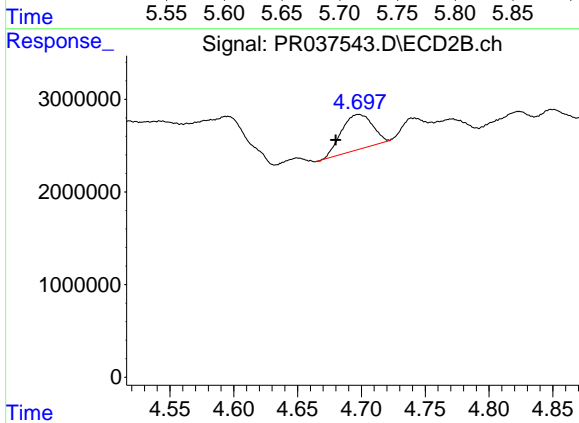
#4 AR-1016-2

R.T.: 4.485 min
 Delta R.T.: 0.018 min
 Response: 1196602
 Conc: 4.24 ng/ml

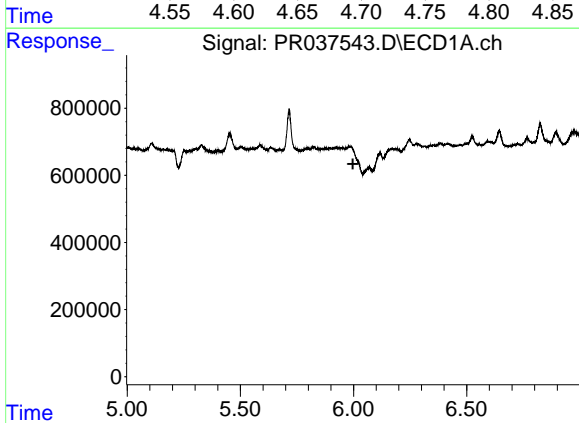


#6 AR-1016-4
 R.T.: 5.716 min
 Delta R.T.: 0.010 min
 Response: 1400441
 Conc: 42.64 ng/ml

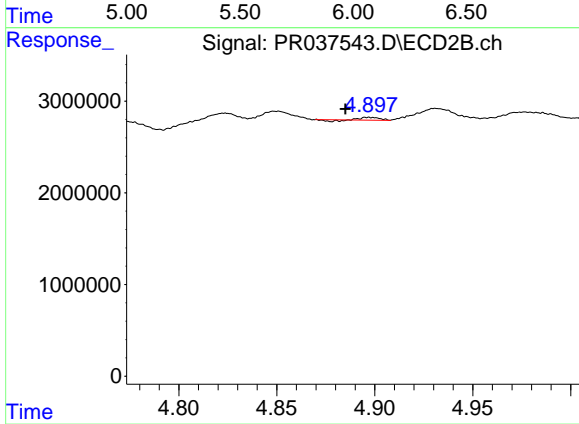
Instrument :
 ECD_R
 ClientSampleId :
 30104



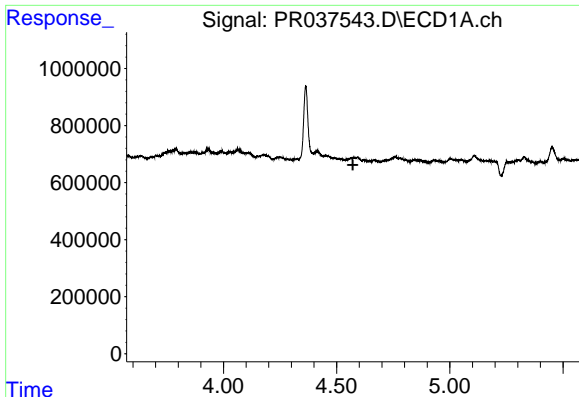
#6 AR-1016-4
 R.T.: 4.698 min
 Delta R.T.: 0.018 min
 Response: 6432176
 Conc: 58.14 ng/ml



#7 AR-1016-5
 R.T.: 0.000 min
 Exp R.T. : 5.997 min
 Response: 0
 Conc: N.D.



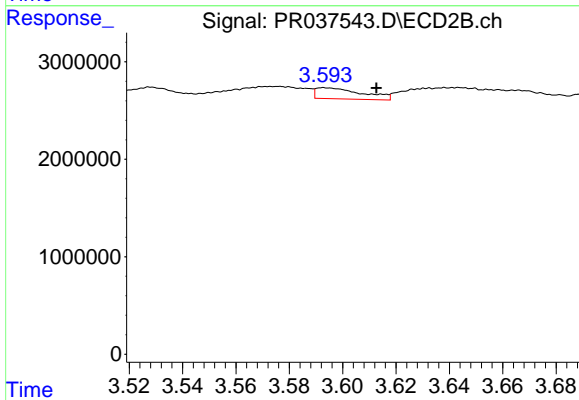
#7 AR-1016-5
 R.T.: 4.897 min
 Delta R.T.: 0.012 min
 Response: 133947
 Conc: 0.88 ng/ml



#8 AR-1221-1

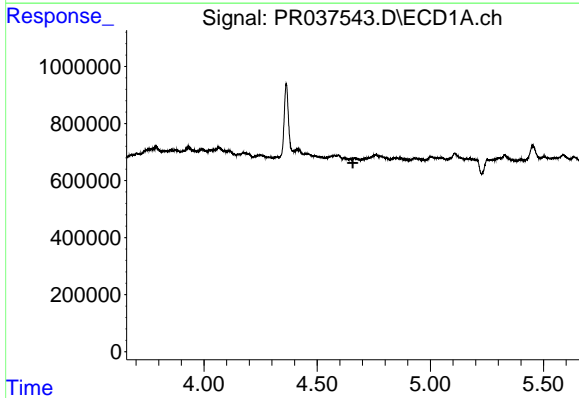
R.T.: 0.000 min
 Exp R.T. : 4.572 min
 Response: 0
 Conc: N.D.

Instrument :
 ECD_R
 ClientSampleId :
 30104



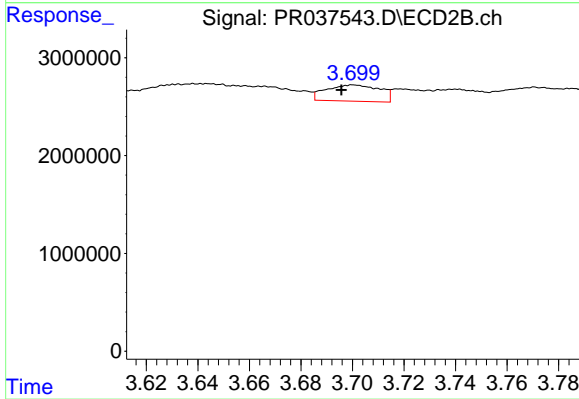
#8 AR-1221-1

R.T.: 3.593 min
 Delta R.T.: -0.020 min
 Response: 1355727
 Conc: 26.63 ng/ml



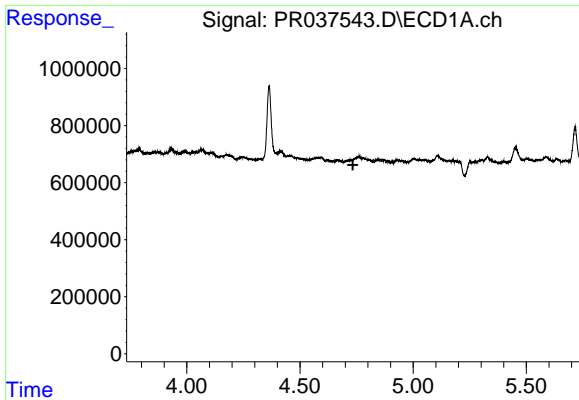
#9 AR-1221-2

R.T.: 0.000 min
 Exp R.T. : 4.658 min
 Response: 0
 Conc: N.D.



#9 AR-1221-2

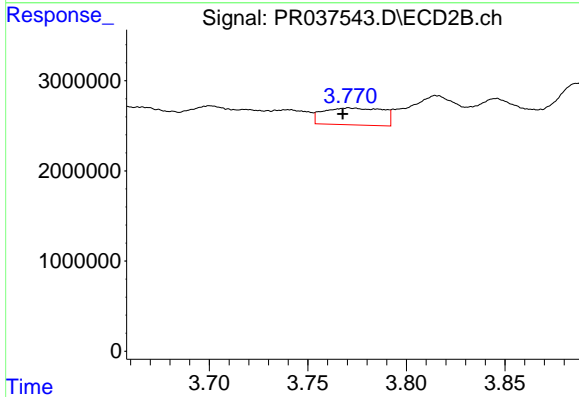
R.T.: 3.700 min
 Delta R.T.: 0.005 min
 Response: 2405168
 Conc: 64.77 ng/ml



#10 AR-1221-3

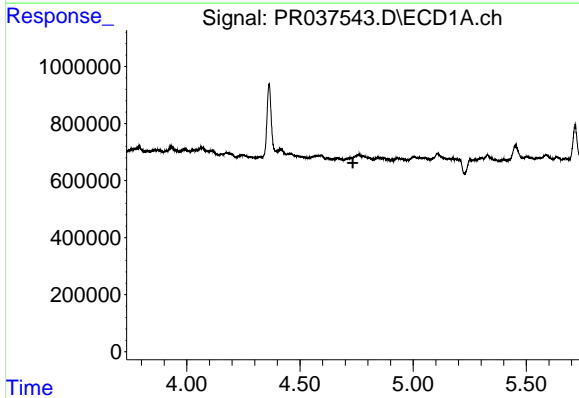
R.T.: 0.000 min
 Exp R.T. : 4.734 min
 Response: 0
 Conc: N.D.

Instrument :
 ECD_R
 ClientSampled :
 30104



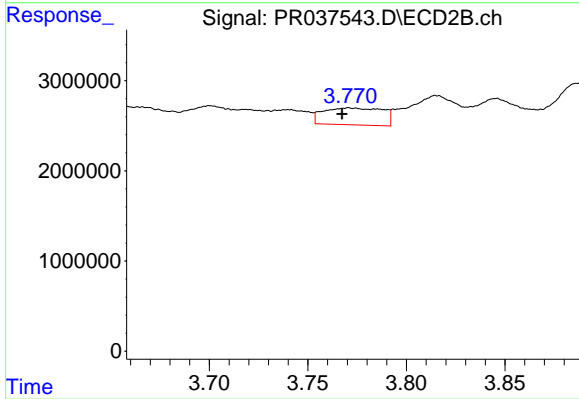
#10 AR-1221-3

R.T.: 3.771 min
 Delta R.T.: 0.003 min
 Response: 3925295
 Conc: 32.06 ng/ml



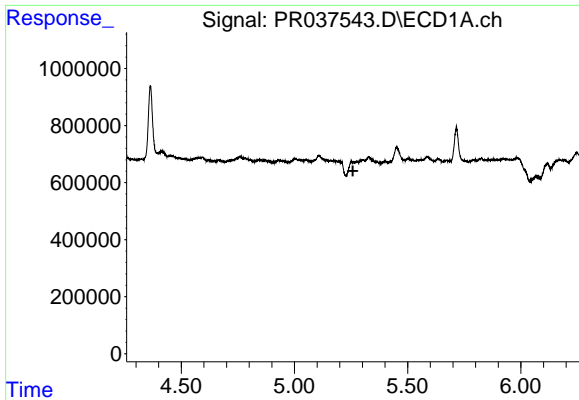
#11 AR-1232-1

R.T.: 0.000 min
 Exp R.T. : 4.734 min
 Response: 0
 Conc: N.D.



#11 AR-1232-1

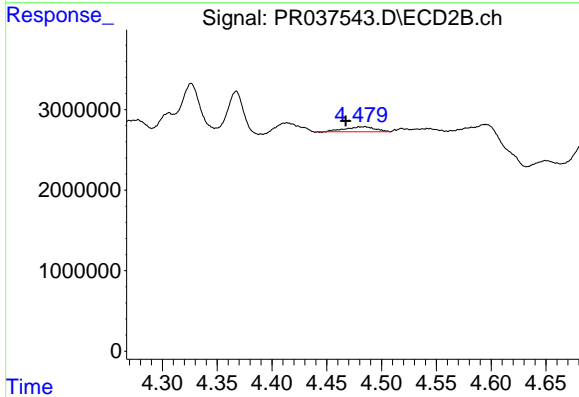
R.T.: 3.771 min
 Delta R.T.: 0.003 min
 Response: 3925295
 Conc: 33.55 ng/ml



#12 AR-1232-2

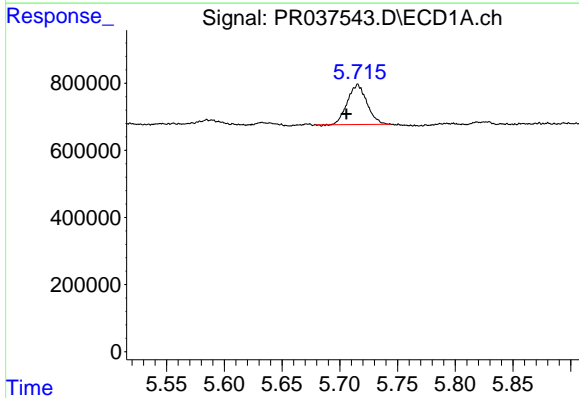
R.T.: 5.251 min
 Delta R.T.: -0.007 min
 Response: -196607
 Conc: N.D.

Instrument :
 ECD_R
 ClientSampleId :
 30104



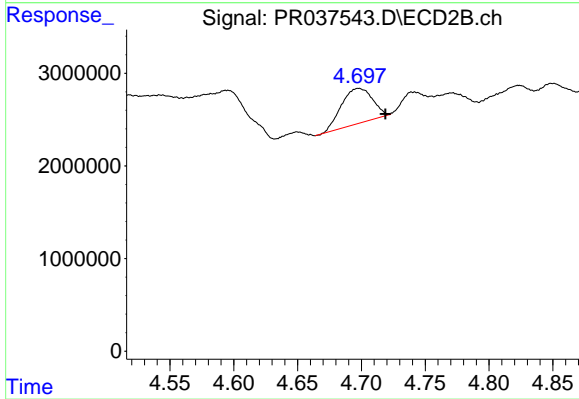
#12 AR-1232-2

R.T.: 4.485 min
 Delta R.T.: 0.018 min
 Response: 1196602
 Conc: 8.66 ng/ml



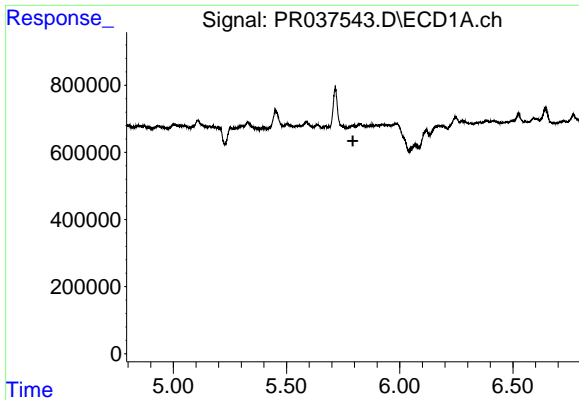
#14 AR-1232-4

R.T.: 5.716 min
 Delta R.T.: 0.010 min
 Response: 1400441
 Conc: 89.22 ng/ml



#14 AR-1232-4

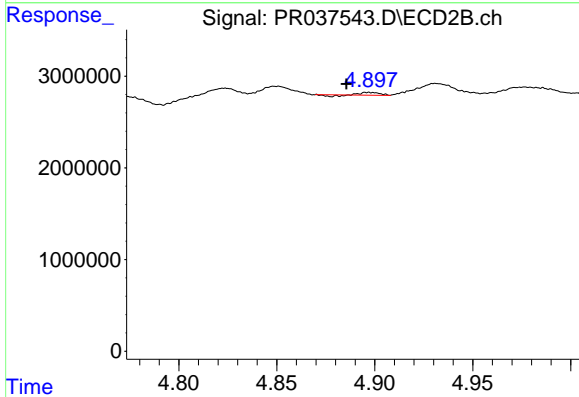
R.T.: 4.698 min
 Delta R.T.: -0.021 min
 Response: 6432176
 Conc: 107.79 ng/ml



#15 AR-1232-5

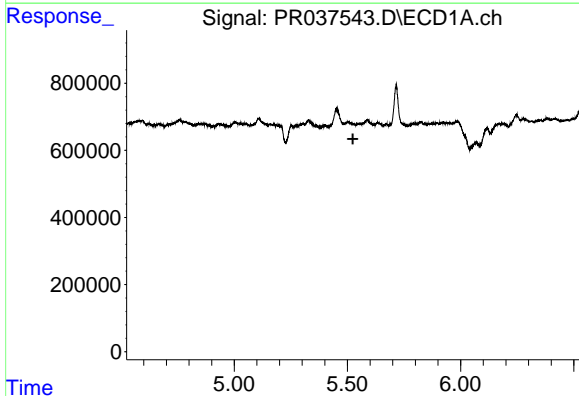
R.T.: 0.000 min
 Exp R.T. : 5.793 min
 Response: 0
 Conc: N.D.

Instrument :
 ECD_R
 ClientSampleId :
 30104



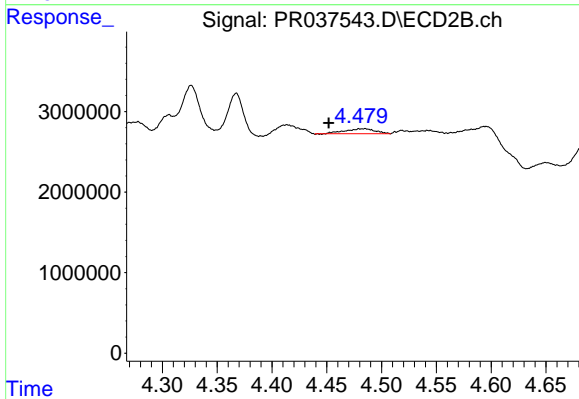
#15 AR-1232-5

R.T.: 4.897 min
 Delta R.T.: 0.011 min
 Response: 133947
 Conc: 1.96 ng/ml



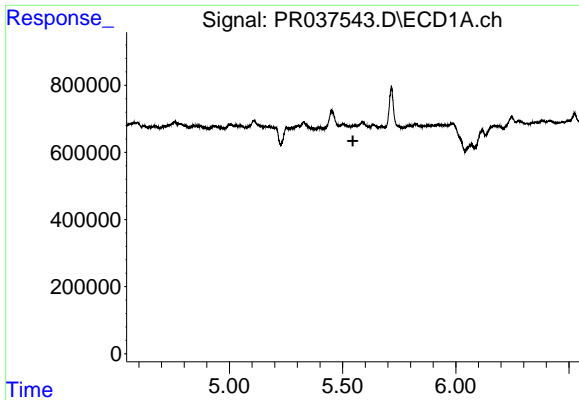
#16 AR-1242-1

R.T.: 0.000 min
 Exp R.T. : 5.524 min
 Response: 0
 Conc: N.D.



#16 AR-1242-1

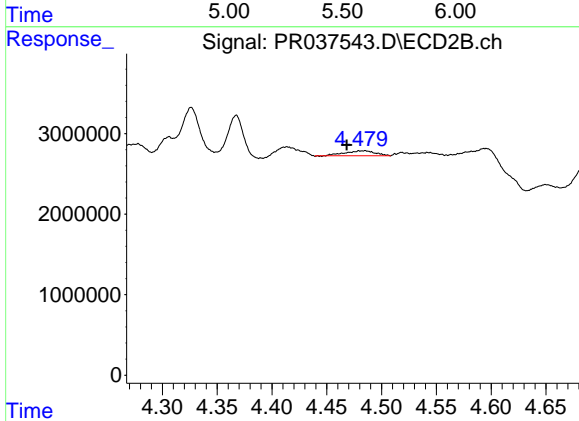
R.T.: 4.485 min
 Delta R.T.: 0.033 min
 Response: 1196602
 Conc: 8.17 ng/ml



#17 AR-1242-2

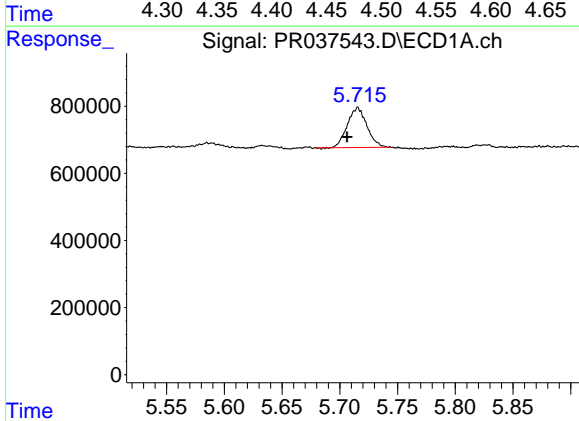
R.T.: 0.000 min
 Exp R.T.: 5.545 min
 Response: 0
 Conc: N.D.

Instrument :
 ECD_R
 ClientSampled :
 30104



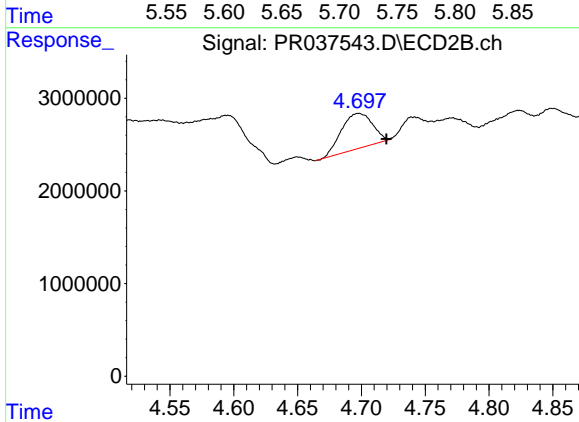
#17 AR-1242-2

R.T.: 4.485 min
 Delta R.T.: 0.017 min
 Response: 1196602
 Conc: 5.24 ng/ml



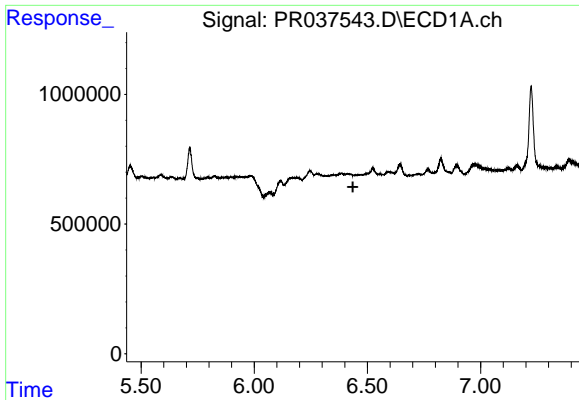
#19 AR-1242-4

R.T.: 5.716 min
 Delta R.T.: 0.009 min
 Response: 1400441
 Conc: 53.09 ng/ml



#19 AR-1242-4

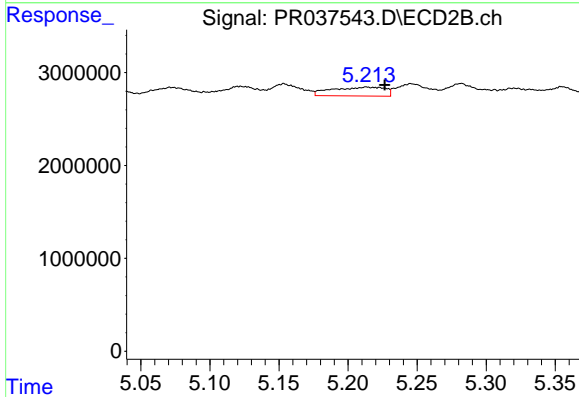
R.T.: 4.698 min
 Delta R.T.: -0.022 min
 Response: 6432176
 Conc: 58.52 ng/ml



#20 AR-1242-5

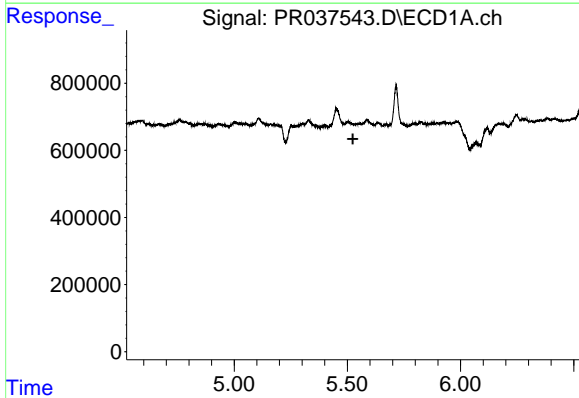
R.T.: 0.000 min
 Exp R.T. : 6.436 min
 Response: 0
 Conc: N.D.

Instrument :
 ECD_R
 ClientSampleId :
 30104



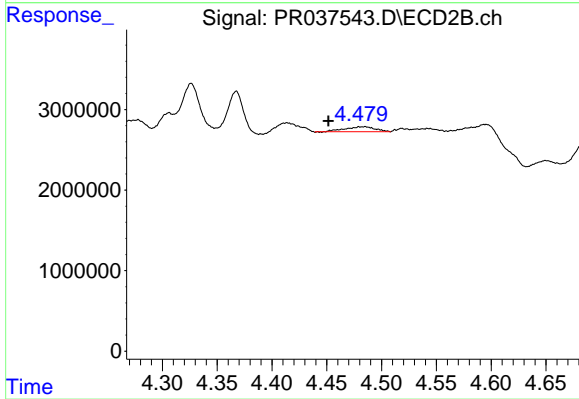
#20 AR-1242-5

R.T.: 5.213 min
 Delta R.T.: -0.014 min
 Response: 2550320
 Conc: 15.39 ng/ml



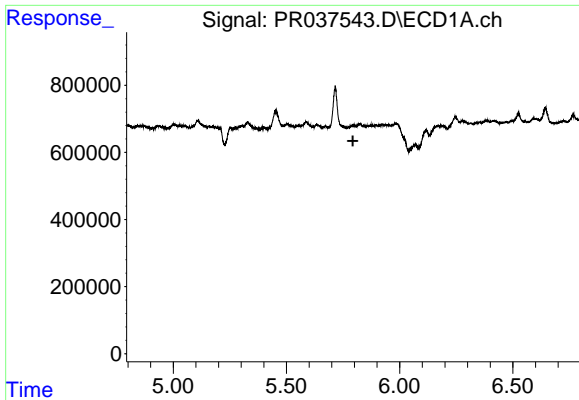
#21 AR-1248-1

R.T.: 0.000 min
 Exp R.T. : 5.525 min
 Response: 0
 Conc: N.D.



#21 AR-1248-1

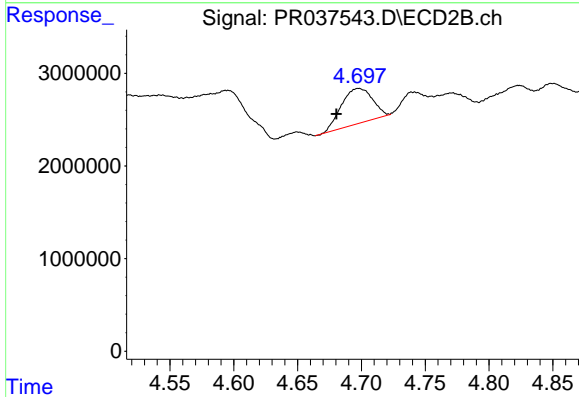
R.T.: 4.485 min
 Delta R.T.: 0.034 min
 Response: 1196602
 Conc: 11.89 ng/ml



#22 AR-1248-2

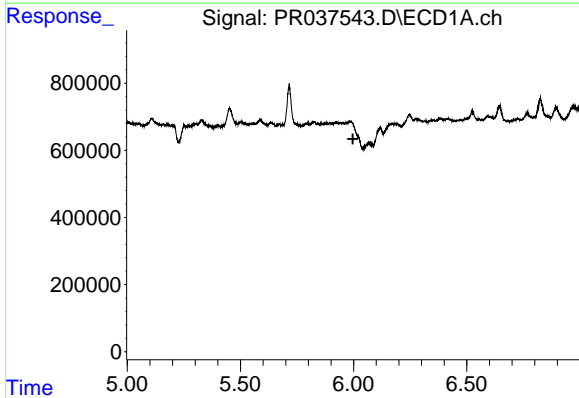
R.T.: 0.000 min
 Exp R.T. : 5.793 min
 Response: 0
 Conc: N.D.

Instrument :
 ECD_R
 ClientSampleId :
 30104



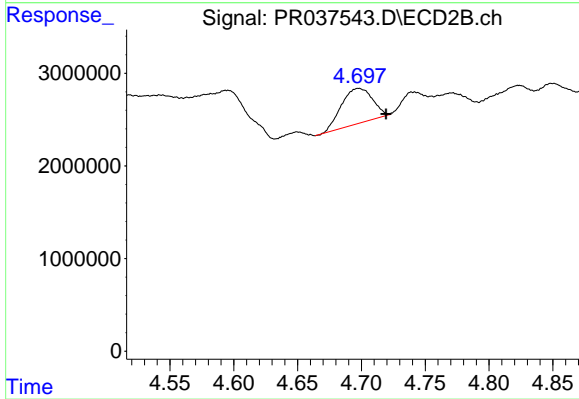
#22 AR-1248-2

R.T.: 4.698 min
 Delta R.T.: 0.018 min
 Response: 6432176
 Conc: 47.13 ng/ml



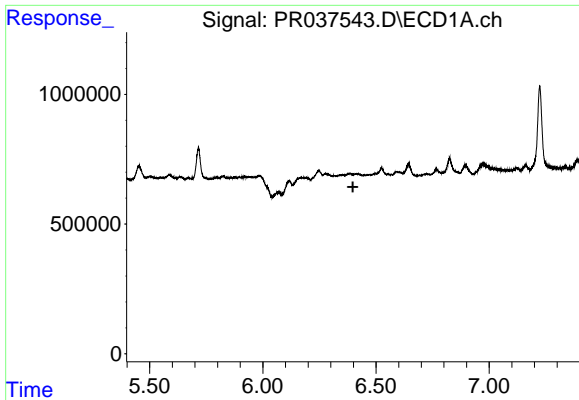
#23 AR-1248-3

R.T.: 0.000 min
 Exp R.T. : 5.997 min
 Response: 0
 Conc: N.D.



#23 AR-1248-3

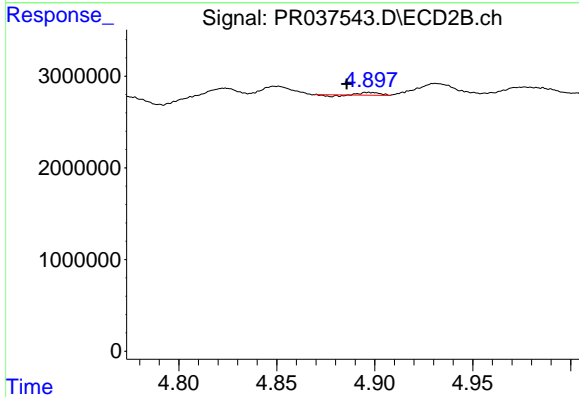
R.T.: 4.698 min
 Delta R.T.: -0.021 min
 Response: 6432176
 Conc: 45.95 ng/ml



#24 AR-1248-4

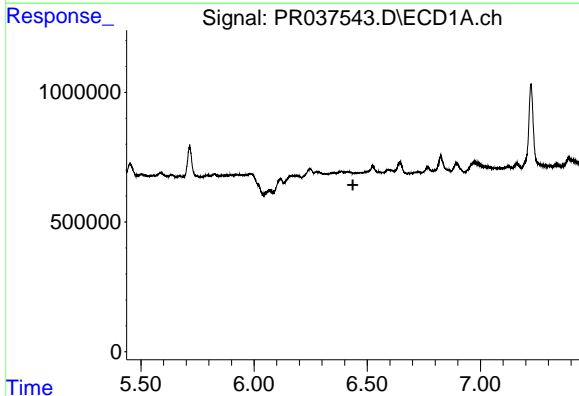
R.T.: 0.000 min
 Exp R.T. : 6.398 min
 Response: 0
 Conc: N.D.

Instrument :
 ECD_R
 ClientSampleId :
 30104



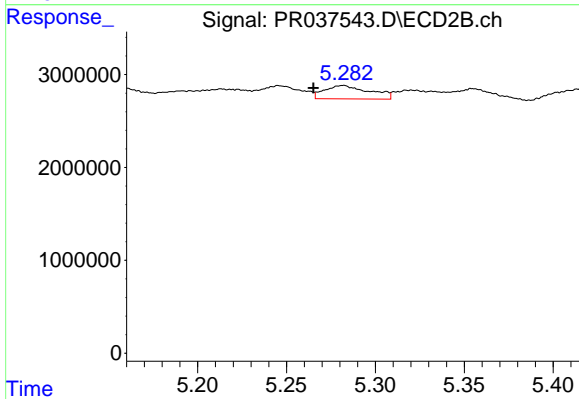
#24 AR-1248-4

R.T.: 4.897 min
 Delta R.T.: 0.011 min
 Response: 133947
 Conc: 0.75 ng/ml



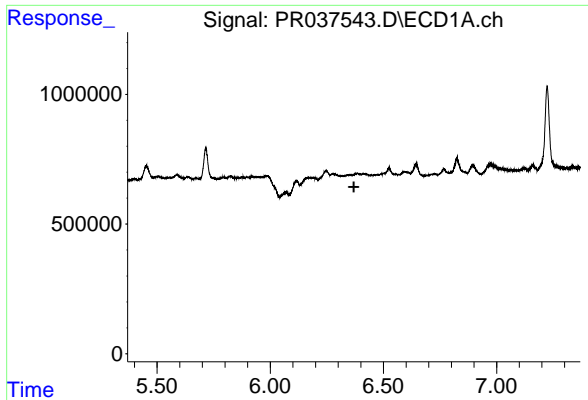
#25 AR-1248-5

R.T.: 0.000 min
 Exp R.T. : 6.436 min
 Response: 0
 Conc: N.D.



#25 AR-1248-5

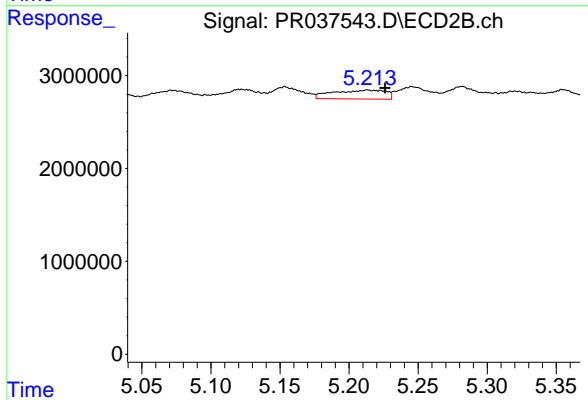
R.T.: 5.282 min
 Delta R.T.: 0.017 min
 Response: 2563508
 Conc: 13.11 ng/ml



#26 AR-1254-1

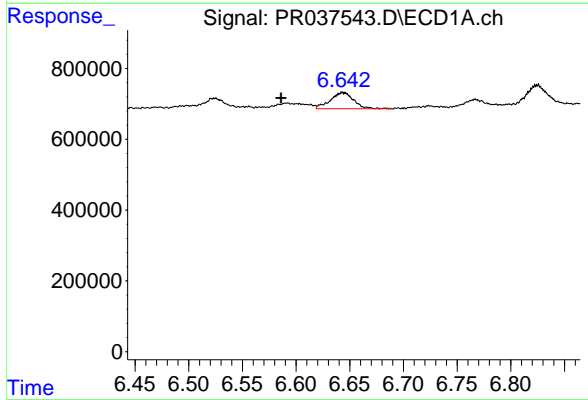
R.T.: 0.000 min
 Exp R.T.: 6.369 min
 Response: 0
 Conc: N.D.

Instrument :
 ECD_R
 ClientSampleId :
 30104



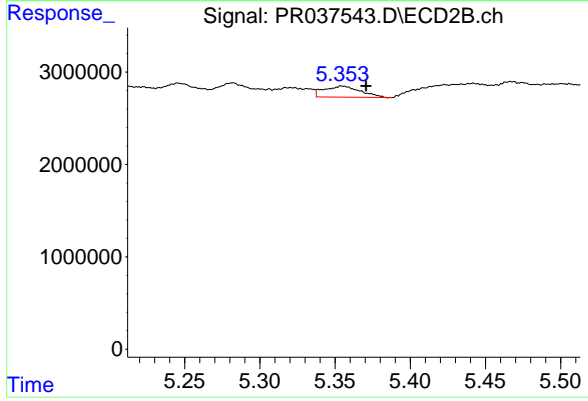
#26 AR-1254-1

R.T.: 5.213 min
 Delta R.T.: -0.013 min
 Response: 2550320
 Conc: 7.40 ng/ml



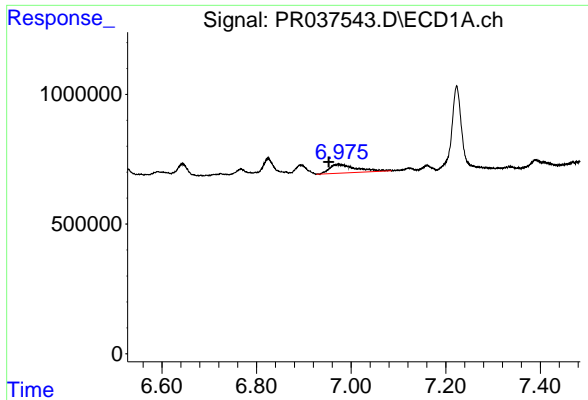
#27 AR-1254-2

R.T.: 6.644 min
 Delta R.T.: 0.058 min
 Response: 694760
 Conc: 8.11 ng/ml



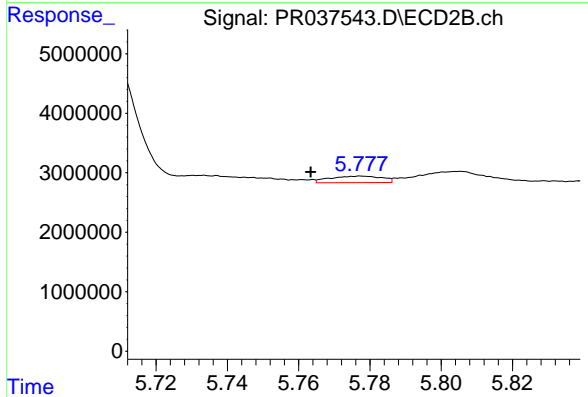
#27 AR-1254-2

R.T.: 5.354 min
 Delta R.T.: -0.017 min
 Response: 2025471
 Conc: 6.76 ng/ml

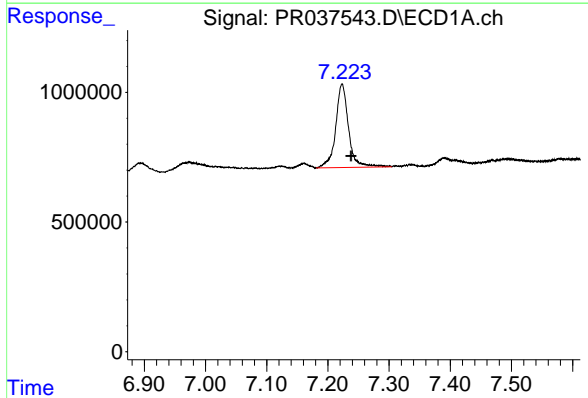


#28 AR-1254-3
 R.T.: 6.973 min
 Delta R.T.: 0.021 min
 Response: 1318481
 Conc: 14.49 ng/ml

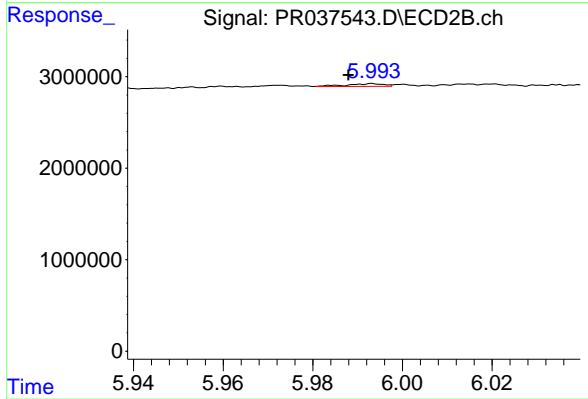
Instrument :
 ECD_R
 ClientSampleId :
 30104



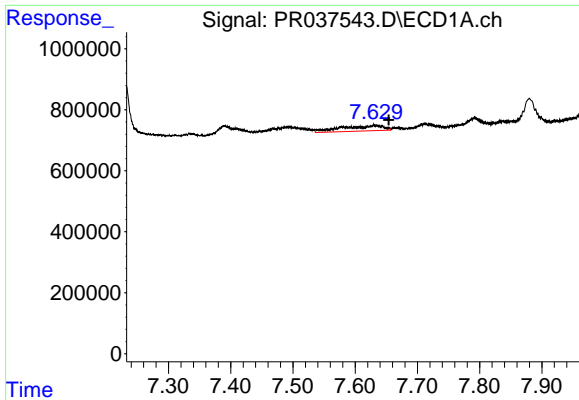
#28 AR-1254-3
 R.T.: 5.778 min
 Delta R.T.: 0.014 min
 Response: 1111312
 Conc: 2.35 ng/ml



#29 AR-1254-4
 R.T.: 7.223 min
 Delta R.T.: -0.015 min
 Response: 4704208
 Conc: 70.20 ng/ml



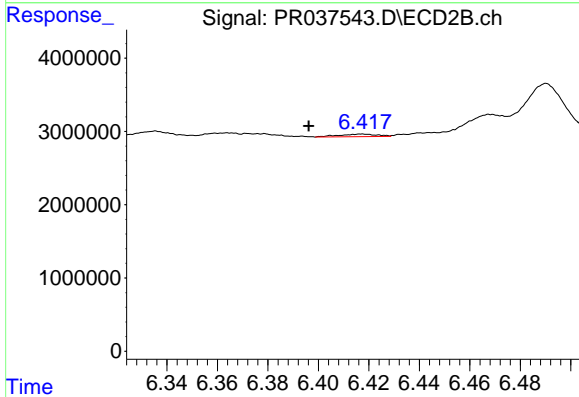
#29 AR-1254-4
 R.T.: 5.994 min
 Delta R.T.: 0.006 min
 Response: 165404
 Conc: 0.47 ng/ml



#30 AR-1254-5

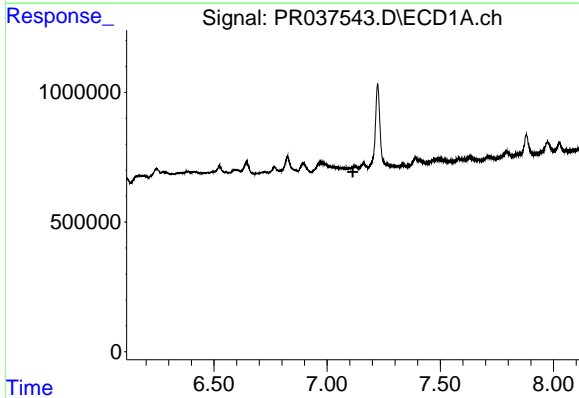
R.T.: 7.631 min
 Delta R.T.: -0.023 min
 Response: 821929
 Conc: 11.43 ng/ml

Instrument :
 ECD_R
 ClientSampled :
 30104



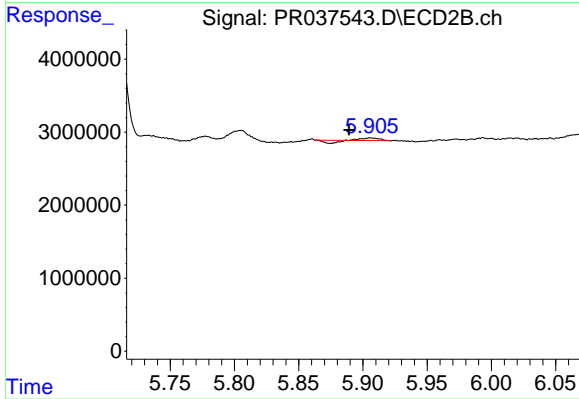
#30 AR-1254-5

R.T.: 6.417 min
 Delta R.T.: 0.021 min
 Response: 351409
 Conc: 0.79 ng/ml



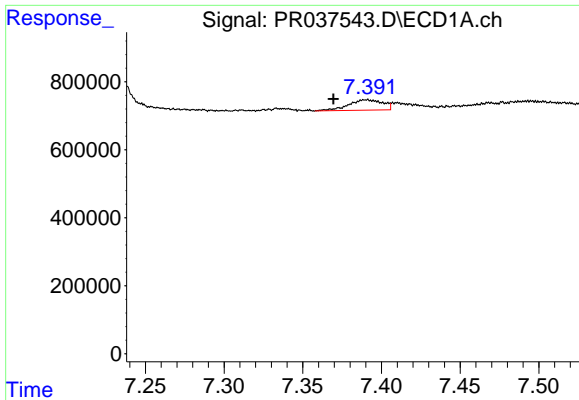
#31 AR-1260-1

R.T.: 0.000 min
 Exp R.T. : 7.114 min
 Response: 0
 Conc: N.D.



#31 AR-1260-1

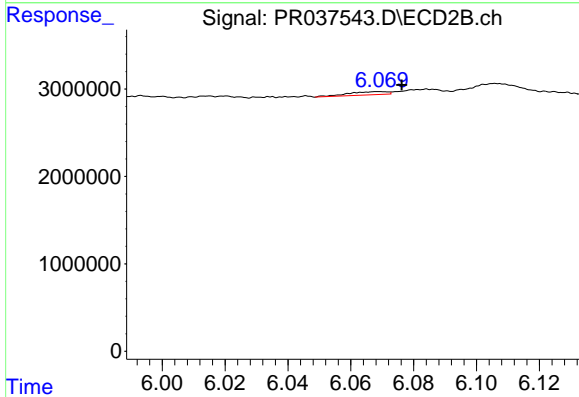
R.T.: 5.906 min
 Delta R.T.: 0.016 min
 Response: 78130
 Conc: 0.27 ng/ml



#32 AR-1260-2

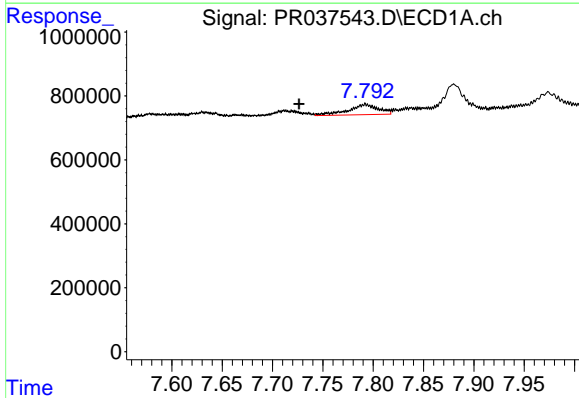
R.T.: 7.390 min
 Delta R.T.: 0.021 min
 Response: 458613
 Conc: 5.75 ng/ml

Instrument :
 ECD_R
 ClientSampleId :
 30104



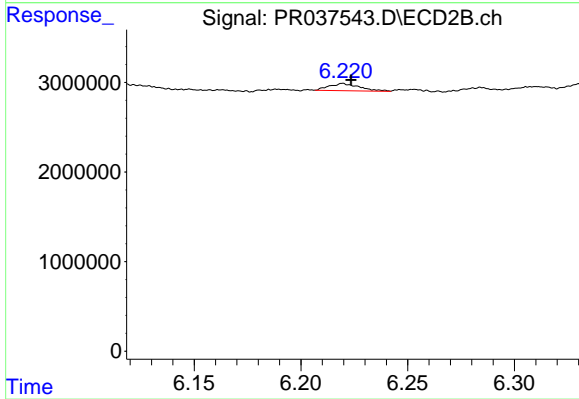
#32 AR-1260-2

R.T.: 6.069 min
 Delta R.T.: -0.007 min
 Response: 306303
 Conc: 0.67 ng/ml



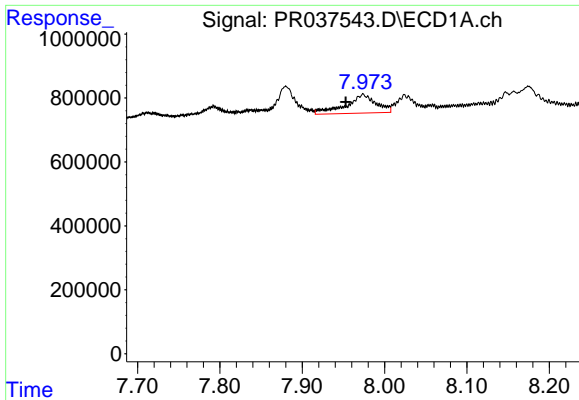
#33 AR-1260-3

R.T.: 7.792 min
 Delta R.T.: 0.066 min
 Response: 669758
 Conc: 10.70 ng/ml



#33 AR-1260-3

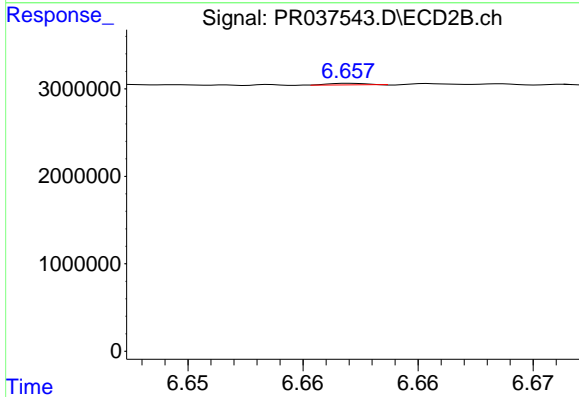
R.T.: 6.220 min
 Delta R.T.: -0.004 min
 Response: 798273
 Conc: 2.24 ng/ml



#34 AR-1260-4

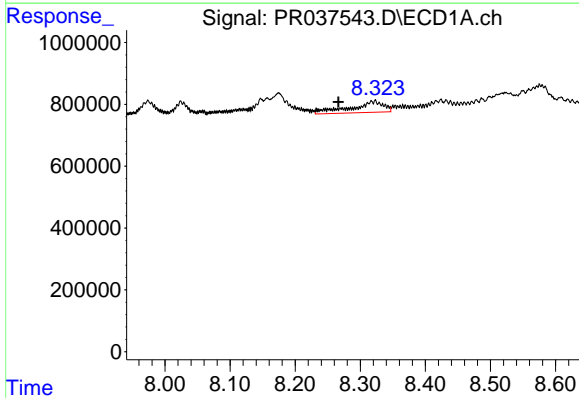
R.T.: 7.974 min
 Delta R.T.: 0.021 min
 Response: 1481546
 Conc: 19.91 ng/ml

Instrument :
 ECD_R
 ClientSampleId :
 30104



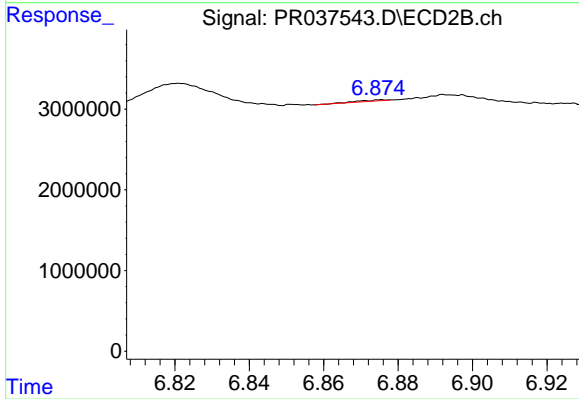
#34 AR-1260-4

R.T.: 6.657 min
 Delta R.T.: -0.029 min
 Response: 50803
 Conc: 0.17 ng/ml



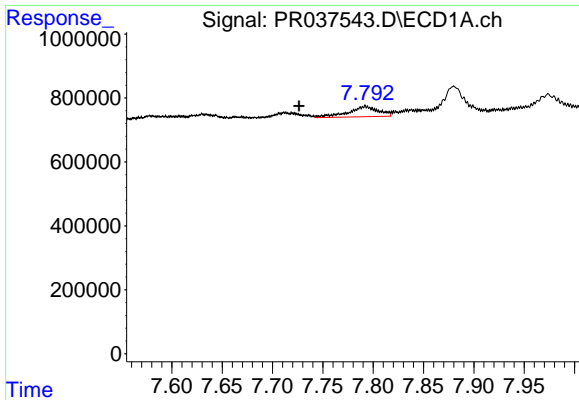
#35 AR-1260-5

R.T.: 8.323 min
 Delta R.T.: 0.057 min
 Response: 1256592
 Conc: 8.69 ng/ml



#35 AR-1260-5

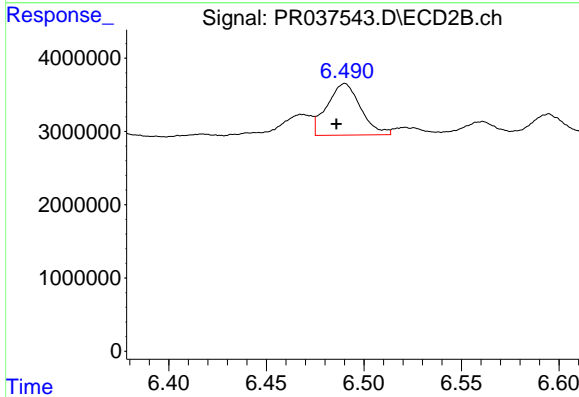
R.T.: 6.876 min
 Delta R.T.: -0.054 min
 Response: 57590
 Conc: 0.07 ng/ml



#36 AR-1262-1

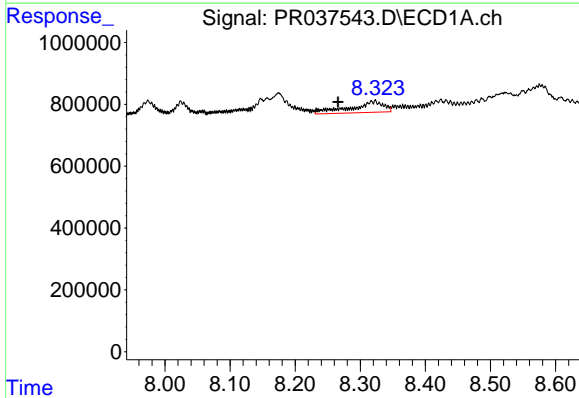
R.T.: 7.792 min
 Delta R.T.: 0.066 min
 Response: 669758
 Conc: 6.41 ng/ml

Instrument :
 ECD_R
 ClientSampled :
 30104



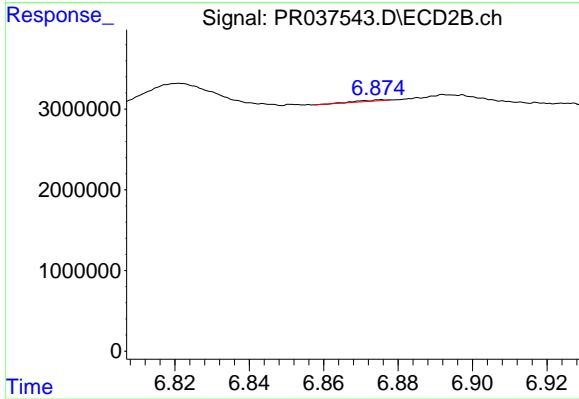
#36 AR-1262-1

R.T.: 6.490 min
 Delta R.T.: 0.004 min
 Response: 8436934
 Conc: 33.66 ng/ml



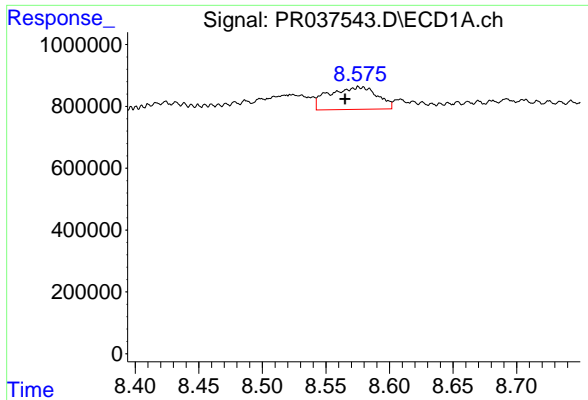
#37 AR-1262-2

R.T.: 8.323 min
 Delta R.T.: 0.057 min
 Response: 1256592
 Conc: 6.46 ng/ml



#37 AR-1262-2

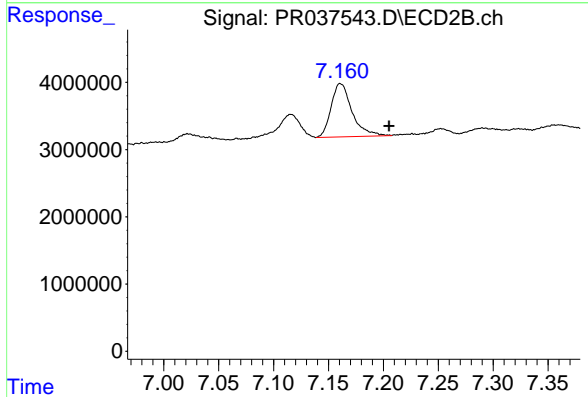
R.T.: 6.876 min
 Delta R.T.: -0.053 min
 Response: 57590
 Conc: 0.05 ng/ml



#38 AR-1262-3

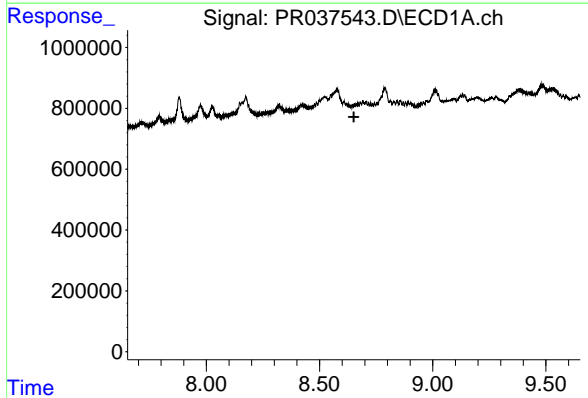
R.T.: 8.576 min
 Delta R.T.: 0.011 min
 Response: 1909449
 Conc: 14.52 ng/ml

Instrument :
 ECD_R
 ClientSampled :
 30104



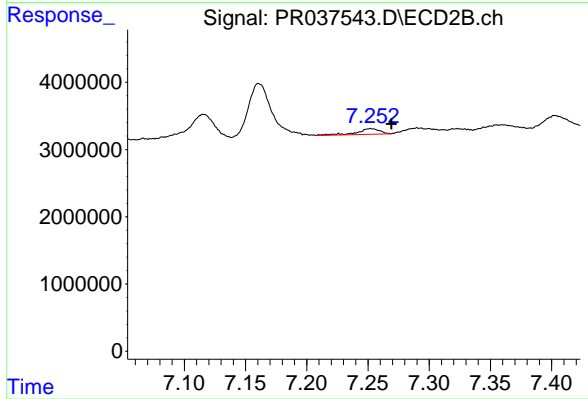
#38 AR-1262-3

R.T.: 7.161 min
 Delta R.T.: -0.045 min
 Response: 10523548
 Conc: 19.19 ng/ml



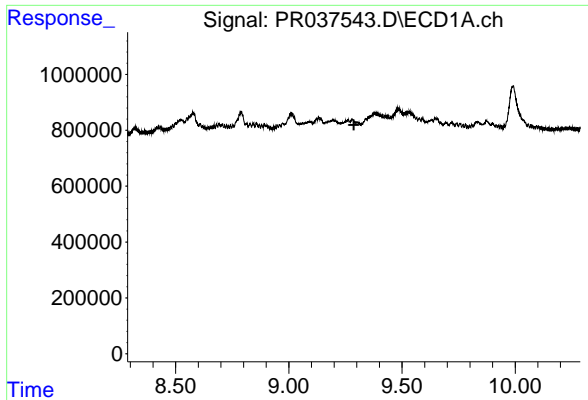
#39 AR-1262-4

R.T.: 0.000 min
 Exp R.T. : 8.652 min
 Response: 0
 Conc: N.D.



#39 AR-1262-4

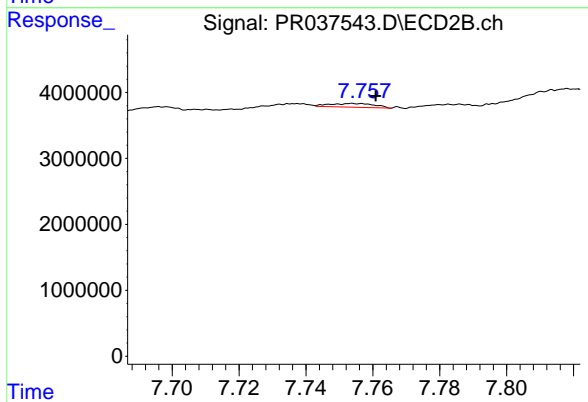
R.T.: 7.252 min
 Delta R.T.: -0.017 min
 Response: 1127570
 Conc: 1.26 ng/ml



#40 AR-1262-5

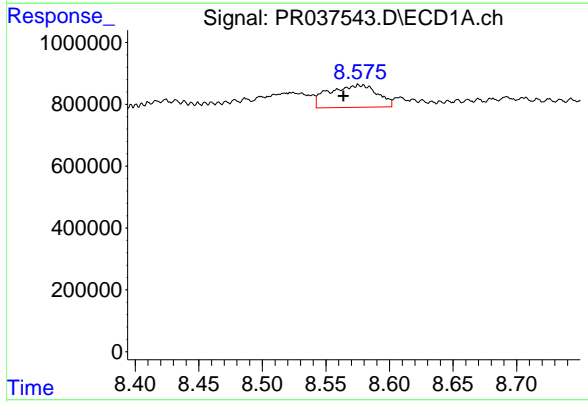
R.T.: 0.000 min
 Exp R.T.: 9.287 min
 Response: 0
 Conc: N.D.

Instrument :
 ECD_R
 ClientSampled :
 30104



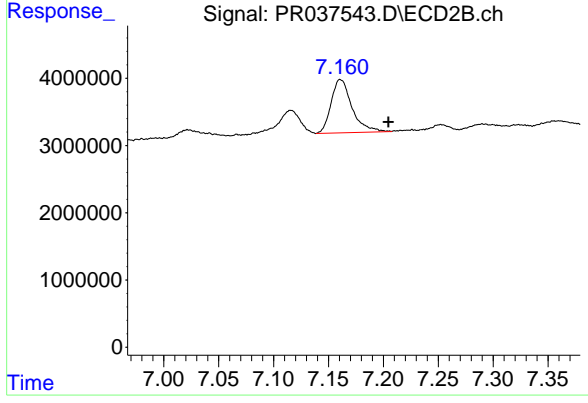
#40 AR-1262-5

R.T.: 7.754 min
 Delta R.T.: -0.007 min
 Response: 535706
 Conc: 1.40 ng/ml



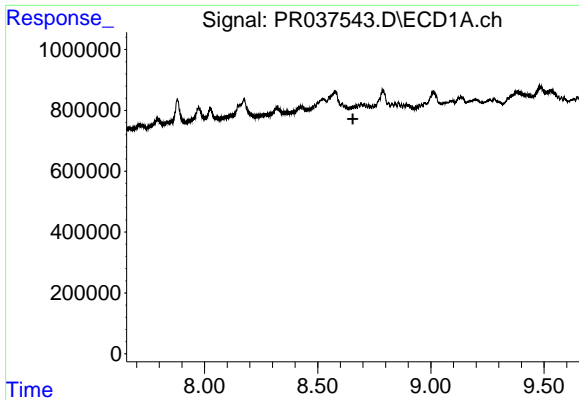
#41 AR-1268-1

R.T.: 8.576 min
 Delta R.T.: 0.012 min
 Response: 1909449
 Conc: 10.66 ng/ml



#41 AR-1268-1

R.T.: 7.161 min
 Delta R.T.: -0.044 min
 Response: 10523548
 Conc: 8.55 ng/ml

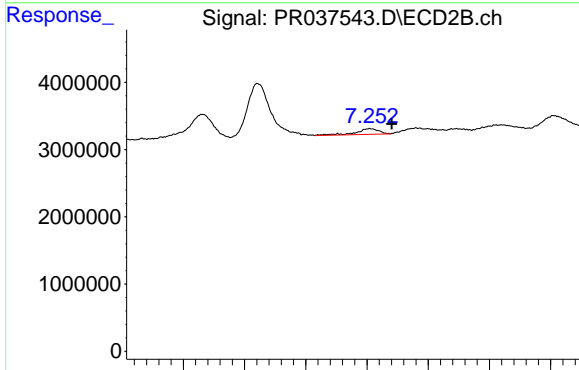


#42 AR-1268-2

R.T.: 0.000 min
 Exp R.T.: 8.655 min
 Response: 0
 Conc: N.D.

Instrument :
 ECD_R
 ClientSampleId :
 30104

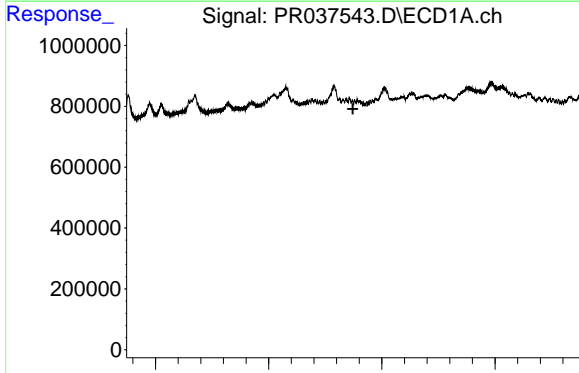
Time



#42 AR-1268-2

R.T.: 7.252 min
 Delta R.T.: -0.018 min
 Response: 1127570
 Conc: 1.06 ng/ml

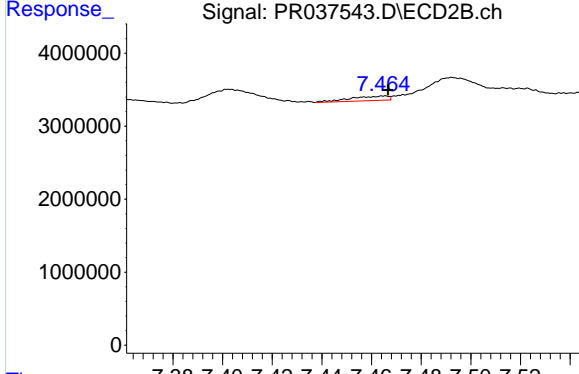
Time



#43 AR-1268-3

R.T.: 0.000 min
 Exp R.T.: 8.872 min
 Response: 0
 Conc: N.D.

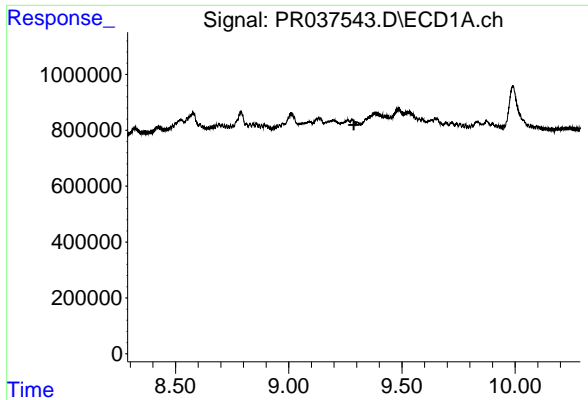
Time



#43 AR-1268-3

R.T.: 7.465 min
 Delta R.T.: -0.001 min
 Response: 643599
 Conc: 0.73 ng/ml

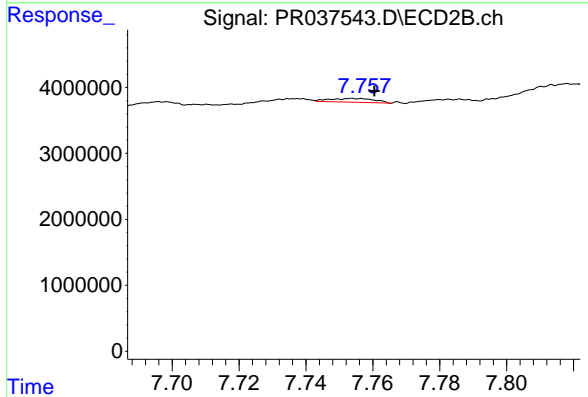
Time



#44 AR-1268-4

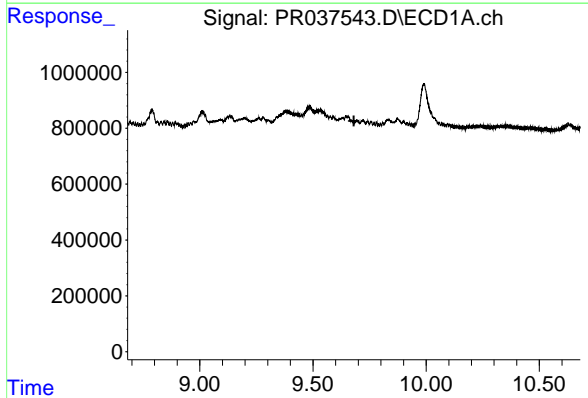
R.T.: 0.000 min
 Exp R.T. : 9.288 min
 Response: 0
 Conc: N.D.

Instrument :
 ECD_R
 ClientSampleId :
 30104



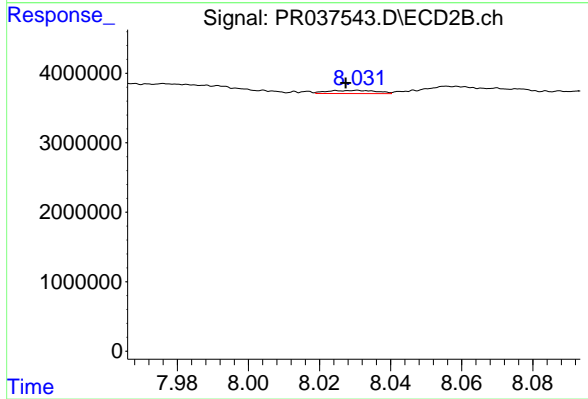
#44 AR-1268-4

R.T.: 7.754 min
 Delta R.T.: -0.007 min
 Response: 535706
 Conc: 1.48 ng/ml



#45 AR-1268-5

R.T.: 0.000 min
 Exp R.T. : 9.681 min
 Response: 0
 Conc: N.D.



#45 AR-1268-5

R.T.: 8.031 min
 Delta R.T.: 0.003 min
 Response: 446154
 Conc: 0.18 ng/ml