

Data Path : Z:\pestpcbsrv\HPCHEM1\ECD_R\Data\PR050219\
 Data File : PR037547.D
 Signal(s) : Signal #1: ECD1A.ch Signal #2: ECD2B.ch
 Acq On : 02 May 2019 12:05
 Operator : SM\SJ
 Sample : K2584-03
 Misc :
 ALS Vial : 12 Sample Multiplier: 1

Instrument :
 ECD_R
 ClientSampled :
 SSSI-0419-S-DH-8

Integration File signal 1: autoint1.e
 Integration File signal 2: autoint2.e
 Quant Time: May 03 00:55:59 2019
 Quant Method : Z:\pestpcbsrv\HPCHEM1\ECD_R\Method\PR042219.M
 Quant Title : GC EXTRACTABLES
 QLast Update : Mon Apr 22 17:27:39 2019
 Response via : Initial Calibration
 Integrator: ChemStation

Volume Inj. : 2 µl
 Signal #1 Phase : ZB-MR1 Signal #2 Phase: ZB-MR2
 Signal #1 Info : 30Mx0.32mmx 0.50µ Signal #2 Info : 30M x 0.32mm x 0.25µm

Compound	RT#1	RT#2	Resp#1	Resp#2	ng/ml	ng/ml
System Monitoring Compounds						
1) SA Tetrachlo...	4.363	3.410	31353548	112.6E6	25.063	23.479
2) SA Decachlor...	9.987	8.245	20025314	76275808	15.141	13.096
Target Compounds						
3) L1 AR-1016-1	0.000	4.485	0	2711167	N.D.	14.890 #
4) L1 AR-1016-2	0.000	4.485	0	2711167	N.D.	9.610 #
5) L1 AR-1016-3	0.000	4.653	0	724180	N.D.	5.037 #
6) L1 AR-1016-4	0.000	4.695	0	3090687	N.D.	27.936 #
7) L1 AR-1016-5	5.935	4.901	258298	3549063	7.533	23.348 #
8) L2 AR-1221-1	0.000	3.613	0	104700	N.D.	2.056 #
9) L2 AR-1221-2	4.667	3.698	302342	2472320	33.430	66.575 #
10) L2 AR-1221-3	4.667	3.766	302342	1425657	9.865	11.643
11) L3 AR-1232-1	4.667	3.766	302342	1425657	10.336	12.186
12) L3 AR-1232-2	0.000	4.485	0	2711167	N.D.	19.614 #
13) L3 AR-1232-3	0.000	4.653	0	724180	N.D.	10.316 #
14) L3 AR-1232-4	0.000	4.733	0	2967683	N.D.	49.733 #
15) L3 AR-1232-5	0.000	4.901	0	3549063	N.D.	52.006 #
16) L4 AR-1242-1	0.000	4.485	0	2711167	N.D.	18.501 #
17) L4 AR-1242-2	0.000	4.485	0	2711167	N.D.	11.883 #
18) L4 AR-1242-3	0.000	4.653	0	724180	N.D.	6.263 #
19) L4 AR-1242-4	0.000	4.733	0	2967683	N.D.	27.001 #
20) L4 AR-1242-5	0.000	5.229	0	2886935	N.D.	17.423 #
21) L5 AR-1248-1	0.000	4.485	0	2711167	N.D.	26.933 #
22) L5 AR-1248-2	0.000	4.695	0	3090687	N.D.	22.647 #
23) L5 AR-1248-3	5.935	4.733	258298	2967683	6.314	21.202 #
24) L5 AR-1248-4	0.000	4.901	0	3549063	N.D.	19.943 #
25) L5 AR-1248-5	0.000	5.276	0	2185979	N.D.	11.175 #
26) L6 AR-1254-1	0.000	5.229	0	2886935	N.D.	8.381 #
27) L6 AR-1254-2	6.584	5.365	851607	3135375	9.937	10.469
28) L6 AR-1254-3	6.964	5.757	1483087	2511769	16.304	5.303 #
29) L6 AR-1254-4	0.000	5.987	0	257026	N.D.	0.733 #
30) L6 AR-1254-5	7.646	6.395	1410581	4416248	19.624	9.973 #
31) L7 AR-1260-1	0.000	5.892	0	2070294	N.D.	7.083 #
32) L7 AR-1260-2	7.361	6.077	1587034	1721794	19.912	3.738 #
33) L7 AR-1260-3	7.782	6.222	795149	-487391	12.707	N.D. #
34) L7 AR-1260-4	7.945	6.686	1049612	827558	14.107	2.715 #
35) L7 AR-1260-5	8.212	6.928	639949	1590136	4.425	1.834 #
36) L8 AR-1262-1	7.782	6.488	795149	5097105	7.613	20.338 #
37) L8 AR-1262-2	8.212	6.928	639949	1590136	3.292	1.266 #
38) L8 AR-1262-3	8.579	7.205	759358	2376862	5.774	4.335
39) L8 AR-1262-4	0.000	7.266	0	4081910	N.D.	4.547 #
40) L8 AR-1262-5	0.000	7.754	0	950957	N.D.	2.485 #
41) L9 AR-1268-1	8.579	7.205	759358	2376862	4.240	1.931 #

Data Path : Z:\pestpcbsrv\HPCHEM1\ECD_R\Data\PR050219\
 Data File : PR037547.D
 Signal(s) : Signal #1: ECD1A.ch Signal #2: ECD2B.ch
 Acq On : 02 May 2019 12:05
 Operator : SM\SJ
 Sample : K2584-03
 Misc :
 ALS Vial : 12 Sample Multiplier: 1

Instrument :
 ECD_R
 ClientSampleId :
 SSSI-0419-S-DH-8

Integration File signal 1: autoint1.e
 Integration File signal 2: autoint2.e
 Quant Time: May 03 00:55:59 2019
 Quant Method : Z:\pestpcbsrv\HPCHEM1\ECD_R\Method\PR042219.M
 Quant Title : GC EXTRACTABLES
 QLast Update : Mon Apr 22 17:27:39 2019
 Response via : Initial Calibration
 Integrator: ChemStation

Volume Inj. : 2 µl
 Signal #1 Phase : ZB-MR1 Signal #2 Phase: ZB-MR2
 Signal #1 Info : 30Mx0.32mmx 0.50µ Signal #2 Info : 30M x 0.32mm x 0.25µm

	Compound	RT#1	RT#2	Resp#1	Resp#2	ng/ml	ng/ml
42)	L9 AR-1268-2	0.000	7.266	0	4081910	N.D.	3.855 #
43)	L9 AR-1268-3	0.000	7.466	0	1999711	N.D.	2.256 #
44)	L9 AR-1268-4	0.000	7.754	0	950957	N.D.	2.621 #
45)	L9 AR-1268-5	0.000	8.025	0	2036078	N.D.	0.800 #

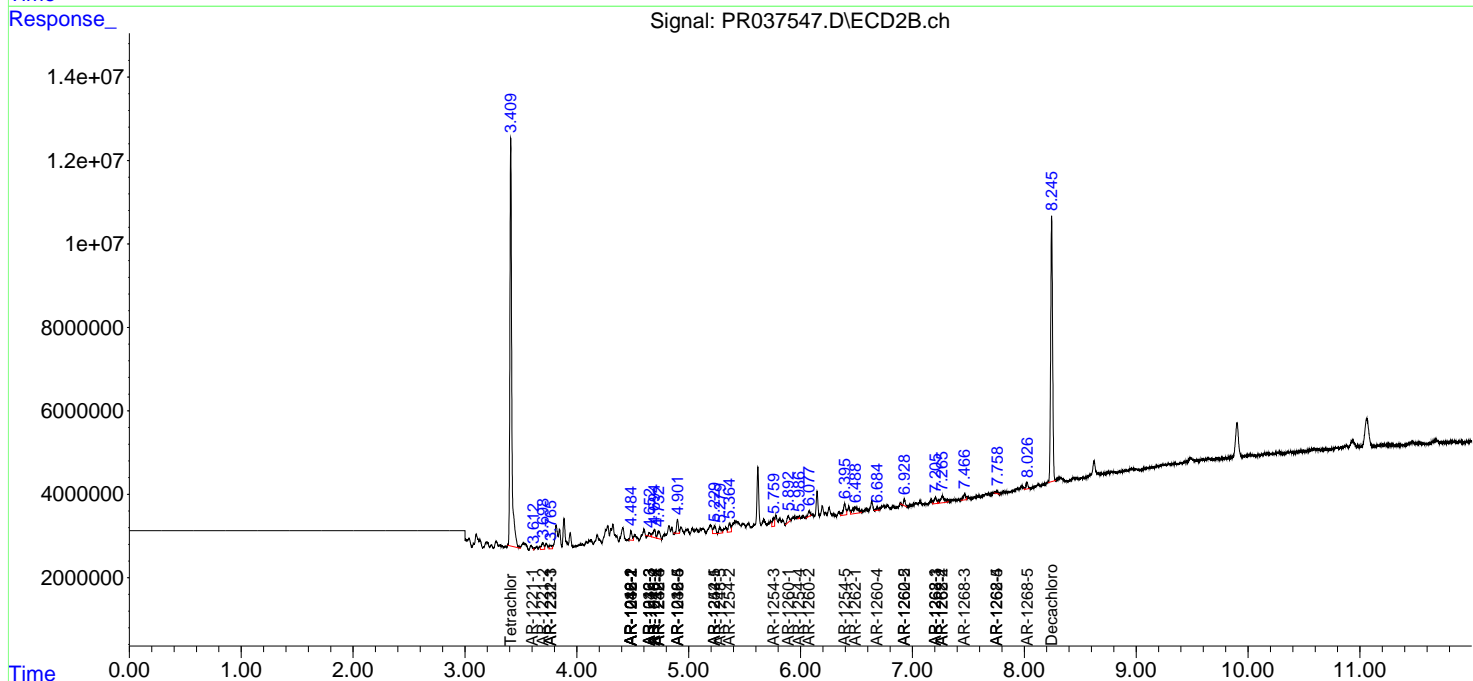
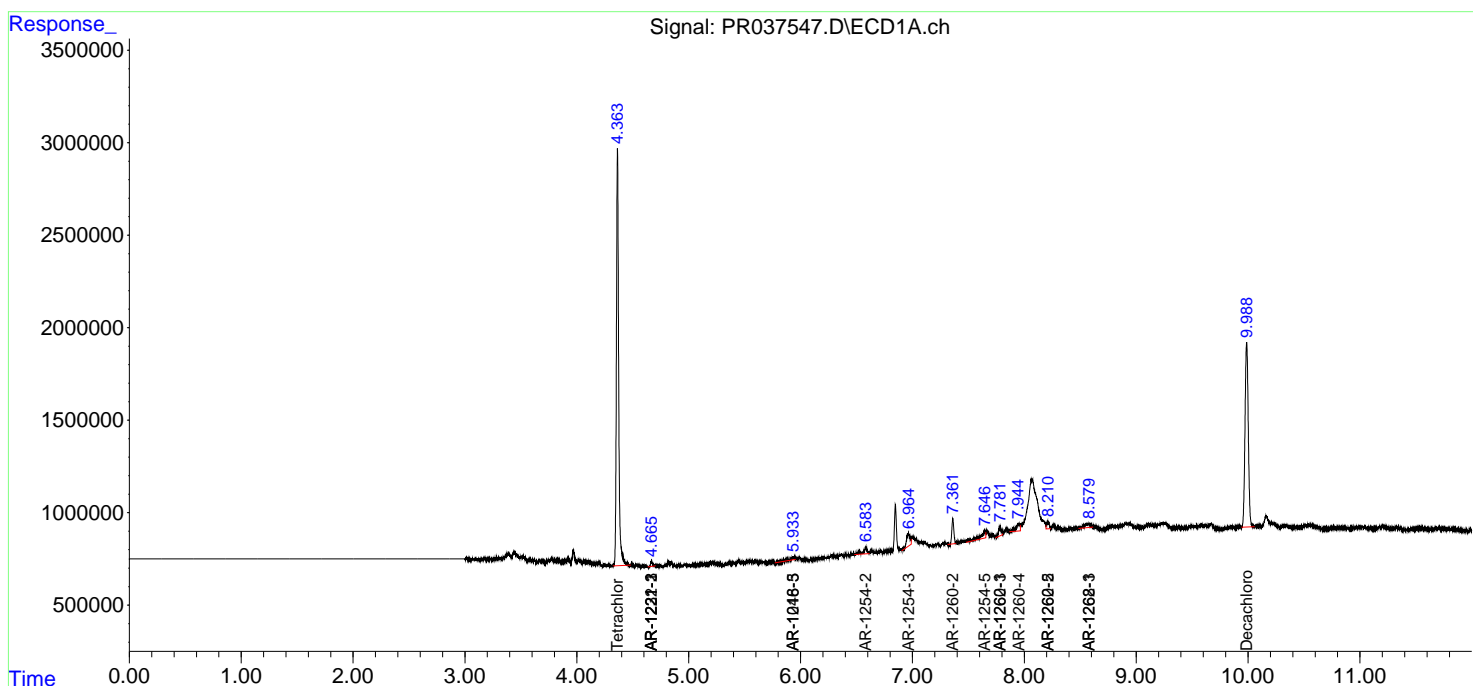
(f)=RT Delta > 1/2 Window (#)=Amounts differ by > 25% (m)=manual int.

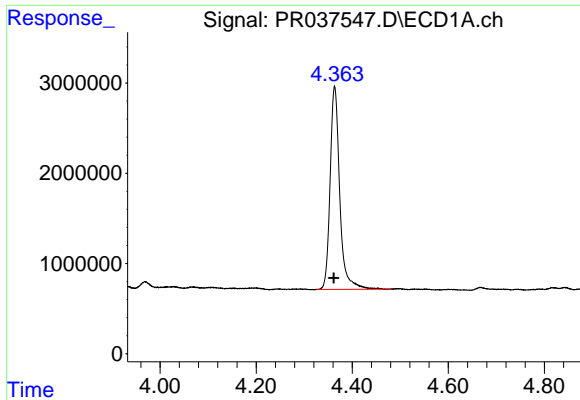
Data Path : Z:\pestpcbsrv\HPCHEM1\ECD_R\Data\PR050219\
 Data File : PR037547.D
 Signal(s) : Signal #1: ECD1A.ch Signal #2: ECD2B.ch
 Acq On : 02 May 2019 12:05
 Operator : SM\SJ
 Sample : K2584-03
 Misc :
 ALS Vial : 12 Sample Multiplier: 1

Instrument :
 ECD_R
 ClientSampleId :
 SSSI-0419-S-DH-8

Integration File signal 1: autoint1.e
 Integration File signal 2: autoint2.e
 Quant Time: May 03 00:55:59 2019
 Quant Method : Z:\pestpcbsrv\HPCHEM1\ECD_R\Method\PR042219.M
 Quant Title : GC EXTRACTABLES
 QLast Update : Mon Apr 22 17:27:39 2019
 Response via : Initial Calibration
 Integrator: ChemStation

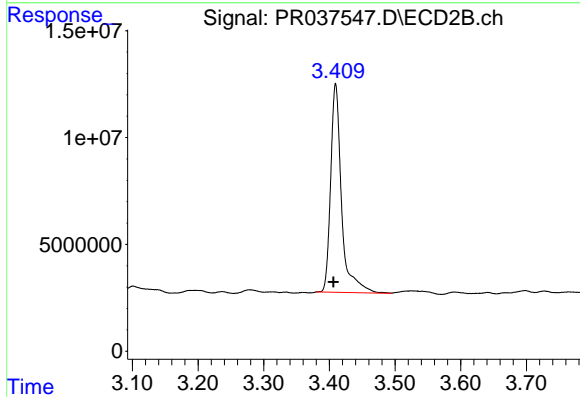
Volume Inj. : 2 µl
 Signal #1 Phase : ZB-MR1 Signal #2 Phase: ZB-MR2
 Signal #1 Info : 30Mx0.32mmx 0.50µ Signal #2 Info : 30M x 0.32mm x 0.25µm



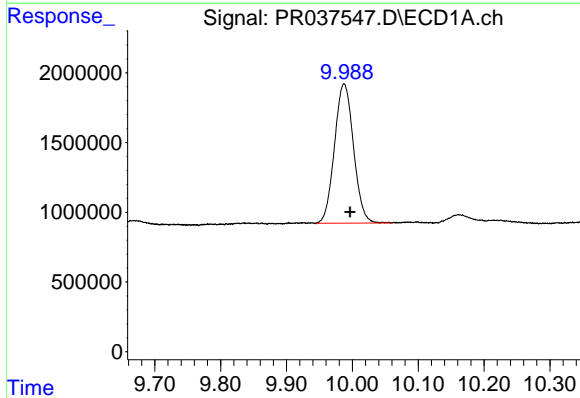


#1 Tetrachloro-m-xylene
 R.T.: 4.363 min
 Delta R.T.: 0.001 min
 Response: 31353548
 Conc: 25.06 ng/ml

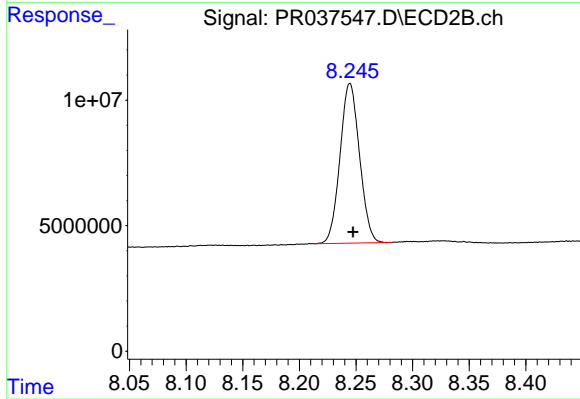
Instrument :
 ECD_R
 ClientSampleId :
 SSSI-0419-S-DH-8



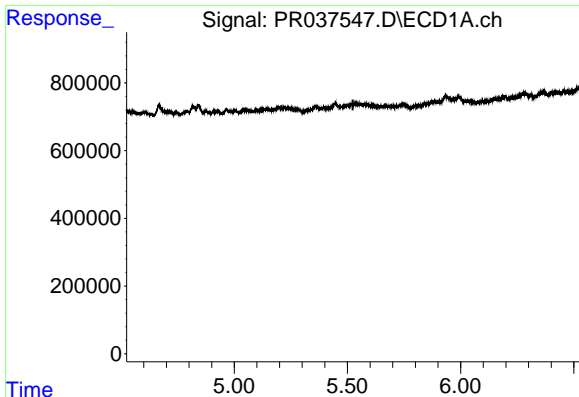
#1 Tetrachloro-m-xylene
 R.T.: 3.410 min
 Delta R.T.: 0.003 min
 Response: 112592838
 Conc: 23.48 ng/ml



#2 Decachlorobiphenyl
 R.T.: 9.987 min
 Delta R.T.: -0.009 min
 Response: 20025314
 Conc: 15.14 ng/ml



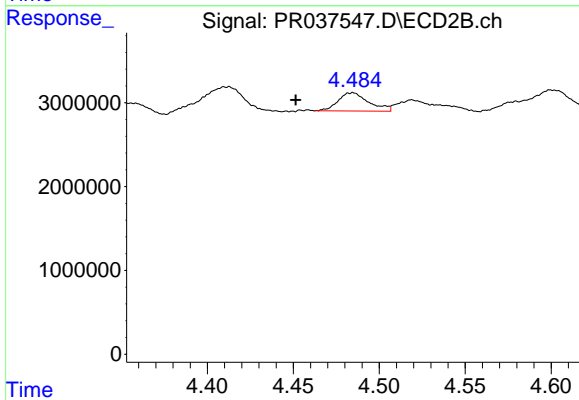
#2 Decachlorobiphenyl
 R.T.: 8.245 min
 Delta R.T.: -0.003 min
 Response: 76275808
 Conc: 13.10 ng/ml



#3 AR-1016-1

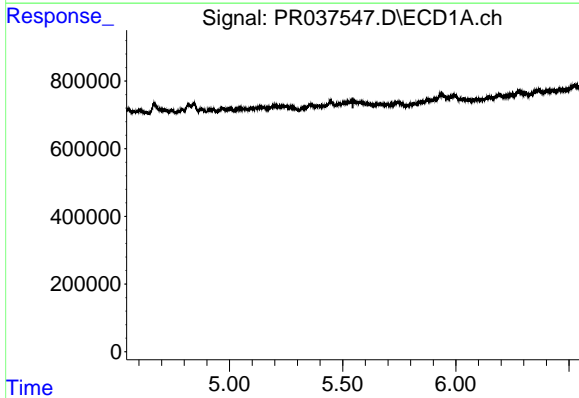
R.T.: 0.000 min
 Exp R.T. : 5.524 min
 Response: 0
 Conc: N.D.

Instrument :
 ECD_R
 ClientSampleId :
 SSSI-0419-S-DH-8



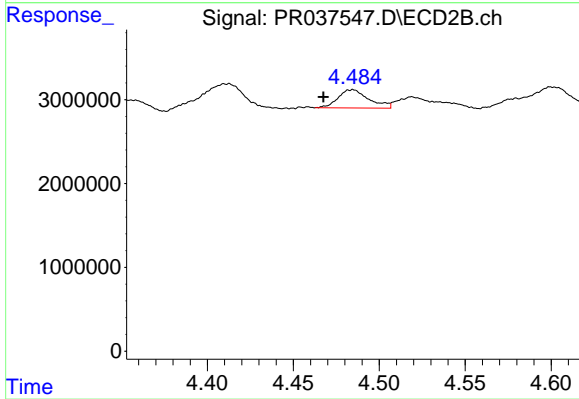
#3 AR-1016-1

R.T.: 4.485 min
 Delta R.T.: 0.034 min
 Response: 2711167
 Conc: 14.89 ng/ml



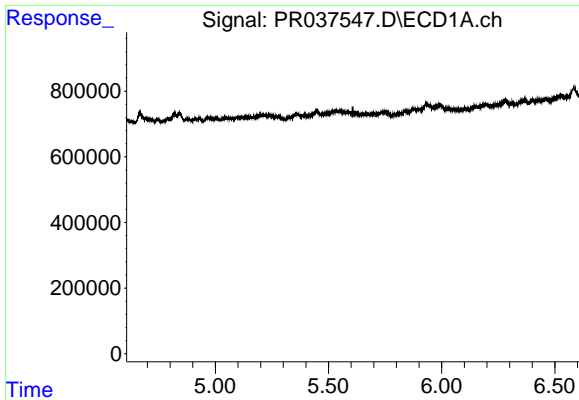
#4 AR-1016-2

R.T.: 0.000 min
 Exp R.T. : 5.545 min
 Response: 0
 Conc: N.D.



#4 AR-1016-2

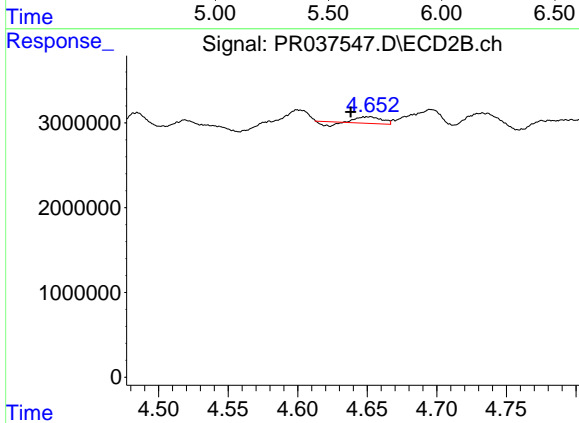
R.T.: 4.485 min
 Delta R.T.: 0.018 min
 Response: 2711167
 Conc: 9.61 ng/ml



#5 AR-1016-3

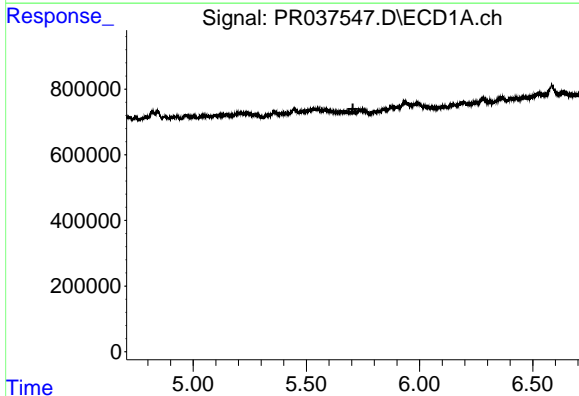
R.T.: 0.000 min
 Exp R.T.: 5.608 min
 Response: 0
 Conc: N.D.

Instrument :
 ECD_R
 ClientSampleId :
 SSSI-0419-S-DH-8



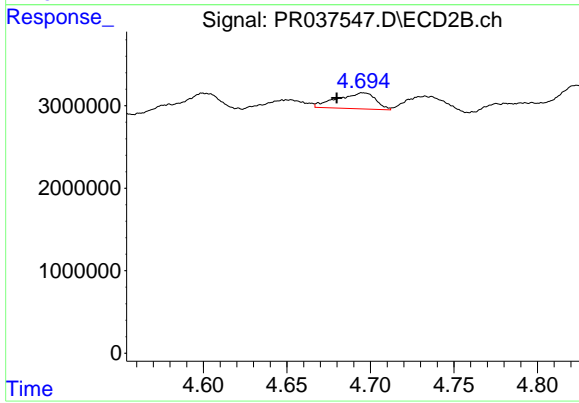
#5 AR-1016-3

R.T.: 4.653 min
 Delta R.T.: 0.014 min
 Response: 724180
 Conc: 5.04 ng/ml



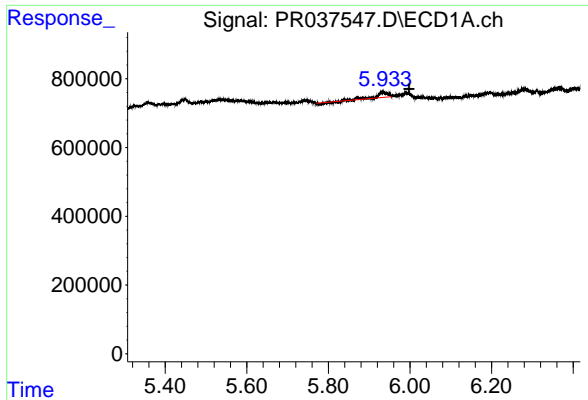
#6 AR-1016-4

R.T.: 0.000 min
 Exp R.T.: 5.705 min
 Response: 0
 Conc: N.D.



#6 AR-1016-4

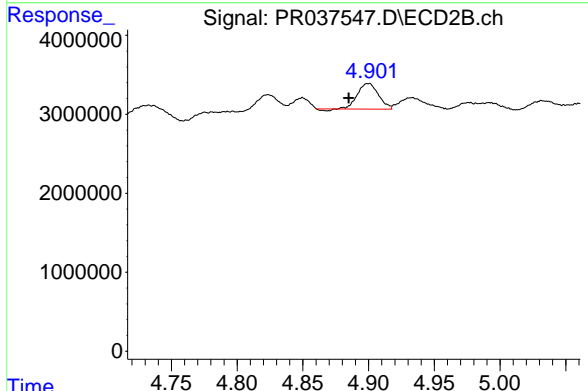
R.T.: 4.695 min
 Delta R.T.: 0.015 min
 Response: 3090687
 Conc: 27.94 ng/ml



#7 AR-1016-5

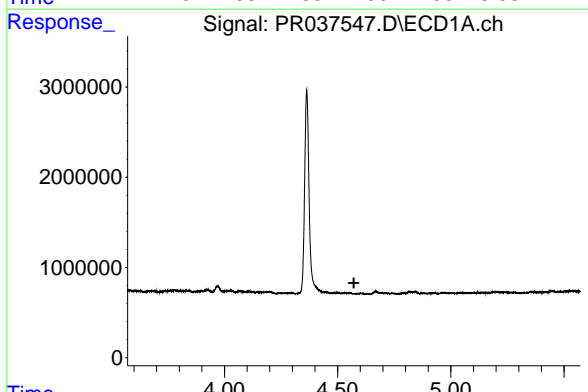
R.T.: 5.935 min
 Delta R.T.: -0.062 min
 Response: 258298
 Conc: 7.53 ng/ml

Instrument :
 ECD_R
ClientSampleId :
 SSSI-0419-S-DH-8



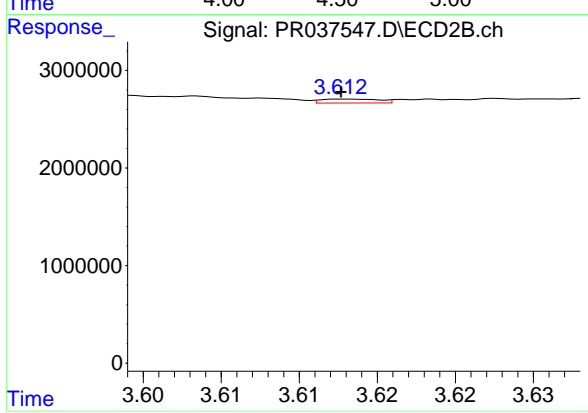
#7 AR-1016-5

R.T.: 4.901 min
 Delta R.T.: 0.016 min
 Response: 3549063
 Conc: 23.35 ng/ml



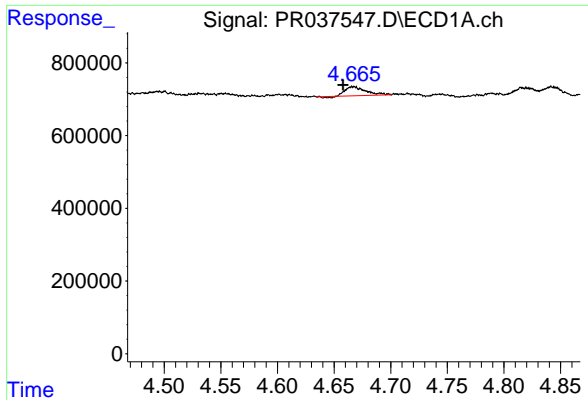
#8 AR-1221-1

R.T.: 0.000 min
 Exp R.T. : 4.572 min
 Response: 0
 Conc: N.D.



#8 AR-1221-1

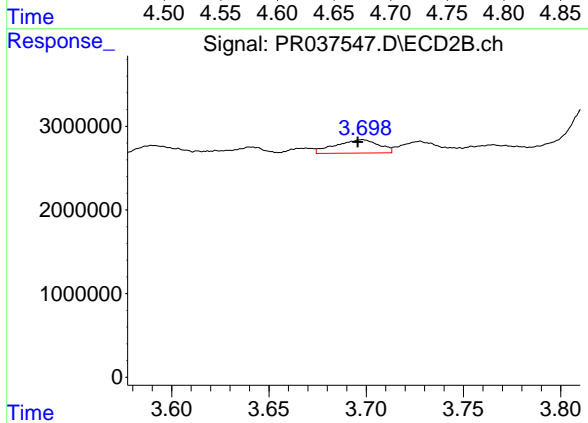
R.T.: 3.613 min
 Delta R.T.: 0.000 min
 Response: 104700
 Conc: 2.06 ng/ml



#9 AR-1221-2

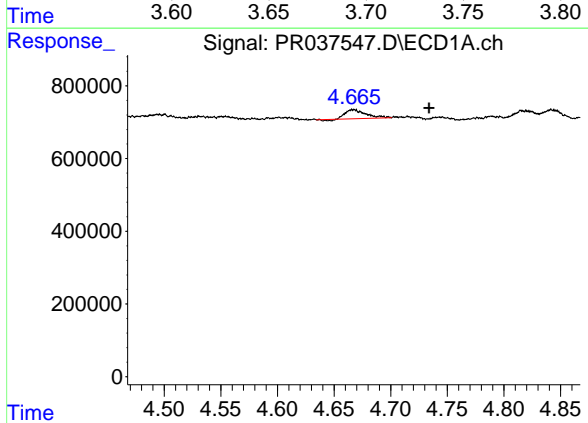
R.T.: 4.667 min
 Delta R.T.: 0.009 min
 Response: 302342
 Conc: 33.43 ng/ml

Instrument :
 ECD_R
 ClientSampleId :
 SSSI-0419-S-DH-8



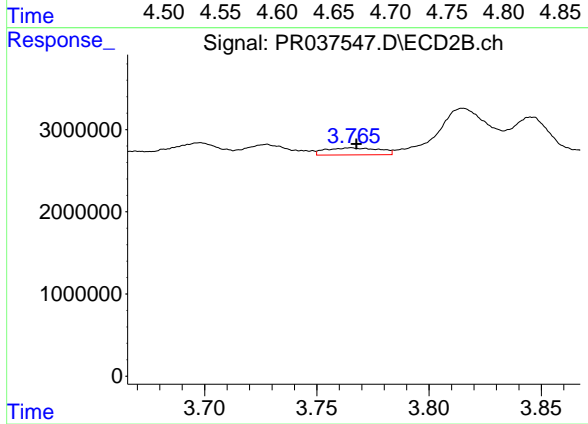
#9 AR-1221-2

R.T.: 3.698 min
 Delta R.T.: 0.002 min
 Response: 2472320
 Conc: 66.58 ng/ml



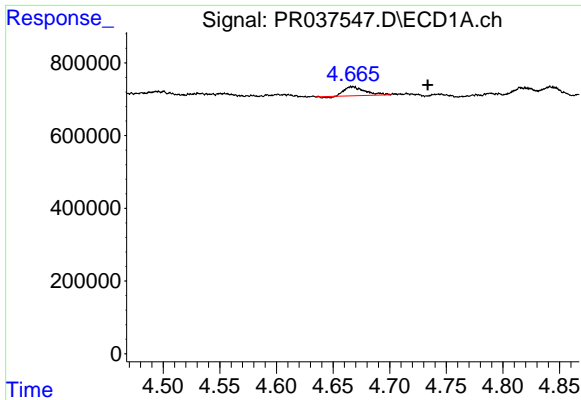
#10 AR-1221-3

R.T.: 4.667 min
 Delta R.T.: -0.067 min
 Response: 302342
 Conc: 9.86 ng/ml



#10 AR-1221-3

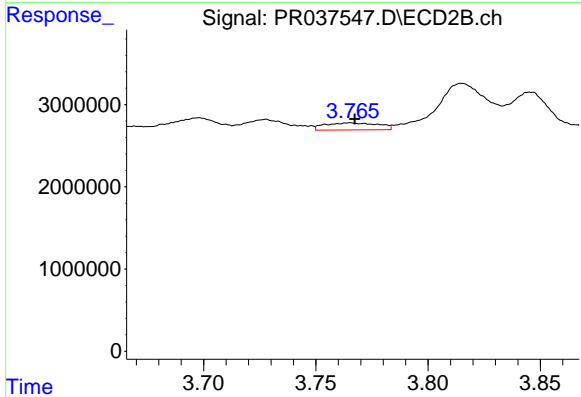
R.T.: 3.766 min
 Delta R.T.: -0.002 min
 Response: 1425657
 Conc: 11.64 ng/ml



#11 AR-1232-1

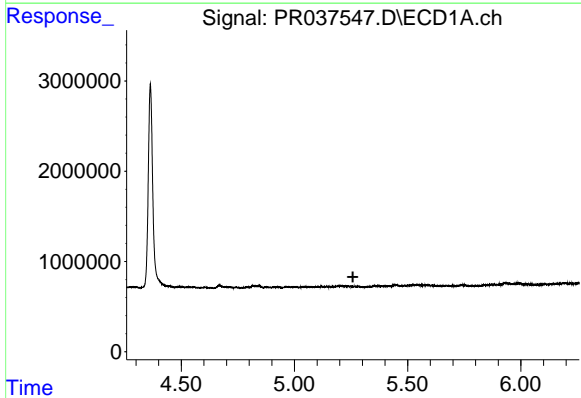
R.T.: 4.667 min
 Delta R.T.: -0.066 min
 Response: 302342
 Conc: 10.34 ng/ml

Instrument :
 ECD_R
 ClientSampleId :
 SSSI-0419-S-DH-8



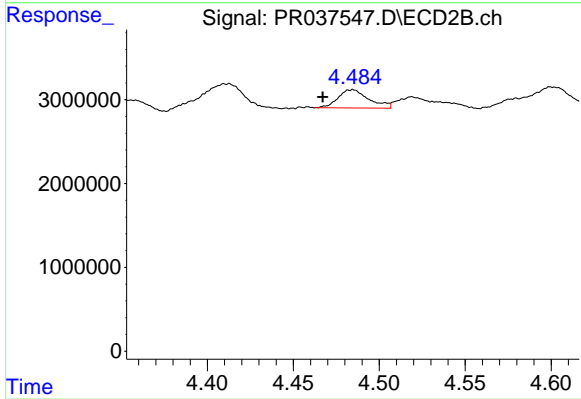
#11 AR-1232-1

R.T.: 3.766 min
 Delta R.T.: -0.002 min
 Response: 1425657
 Conc: 12.19 ng/ml



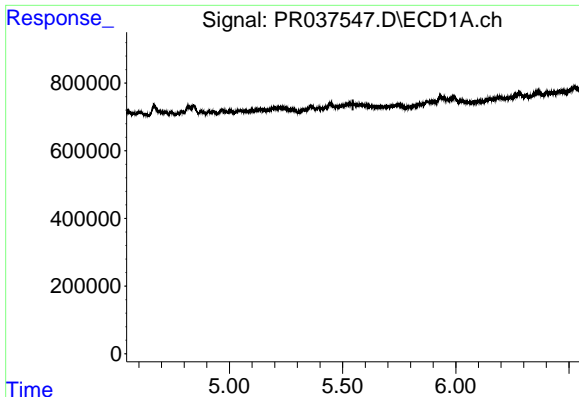
#12 AR-1232-2

R.T.: 0.000 min
 Exp R.T. : 5.258 min
 Response: 0
 Conc: N.D.



#12 AR-1232-2

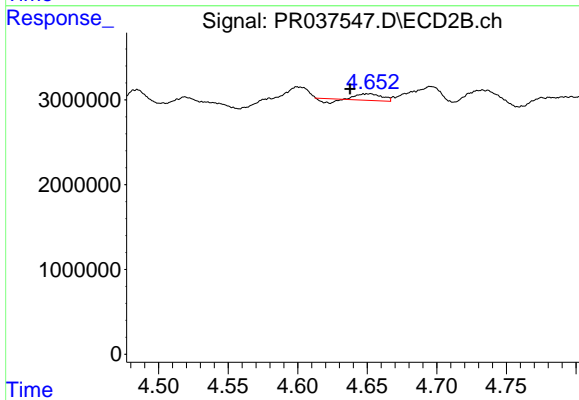
R.T.: 4.485 min
 Delta R.T.: 0.018 min
 Response: 2711167
 Conc: 19.61 ng/ml



#13 AR-1232-3

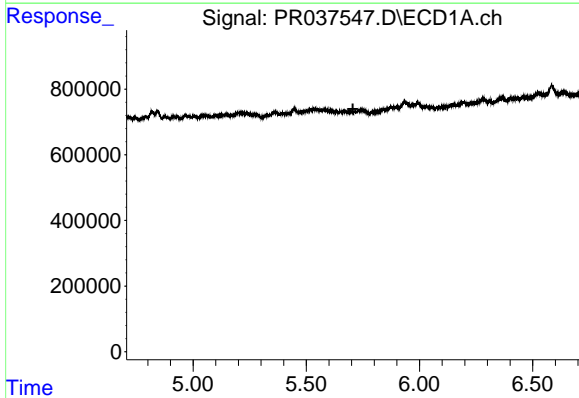
R.T.: 0.000 min
 Exp R.T. : 5.545 min
 Response: 0
 Conc: N.D.

Instrument :
 ECD_R
 ClientSampleId :
 SSSI-0419-S-DH-8



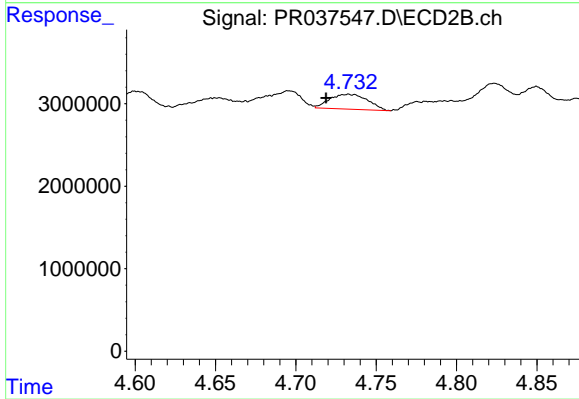
#13 AR-1232-3

R.T.: 4.653 min
 Delta R.T.: 0.015 min
 Response: 724180
 Conc: 10.32 ng/ml



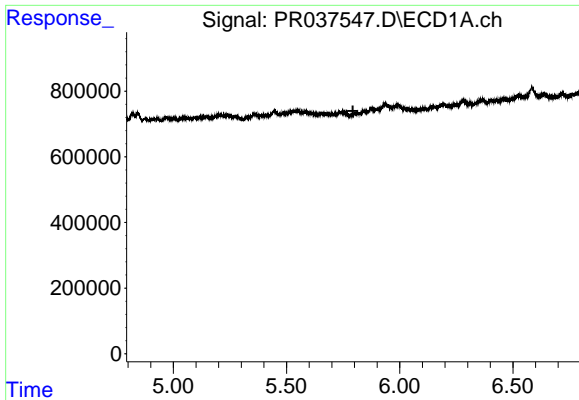
#14 AR-1232-4

R.T.: 0.000 min
 Exp R.T. : 5.706 min
 Response: 0
 Conc: N.D.



#14 AR-1232-4

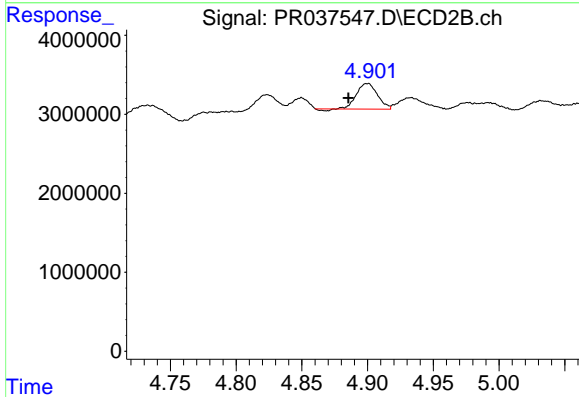
R.T.: 4.733 min
 Delta R.T.: 0.014 min
 Response: 2967683
 Conc: 49.73 ng/ml



#15 AR-1232-5

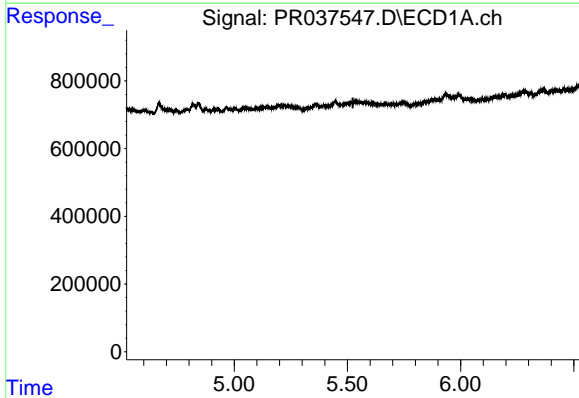
R.T.: 0.000 min
 Exp R.T. : 5.793 min
 Response: 0
 Conc: N.D.

Instrument :
 ECD_R
ClientSampled :
 SSSI-0419-S-DH-8



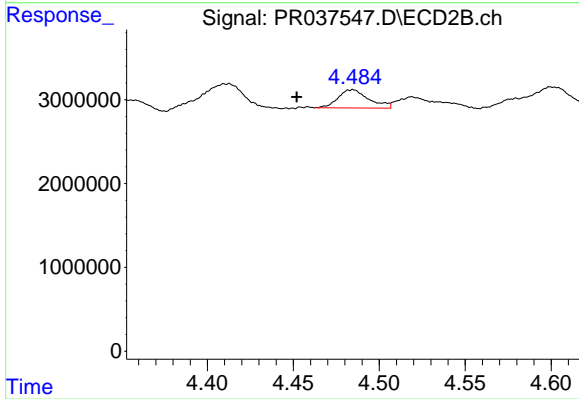
#15 AR-1232-5

R.T.: 4.901 min
 Delta R.T.: 0.015 min
 Response: 3549063
 Conc: 52.01 ng/ml



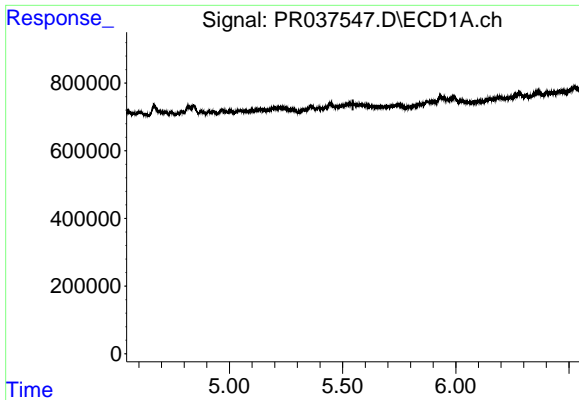
#16 AR-1242-1

R.T.: 0.000 min
 Exp R.T. : 5.524 min
 Response: 0
 Conc: N.D.



#16 AR-1242-1

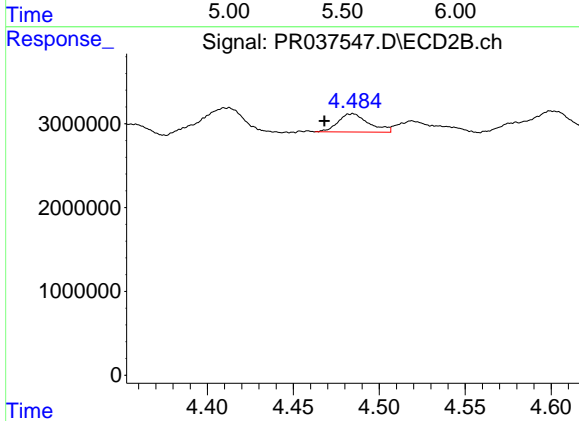
R.T.: 4.485 min
 Delta R.T.: 0.033 min
 Response: 2711167
 Conc: 18.50 ng/ml



#17 AR-1242-2

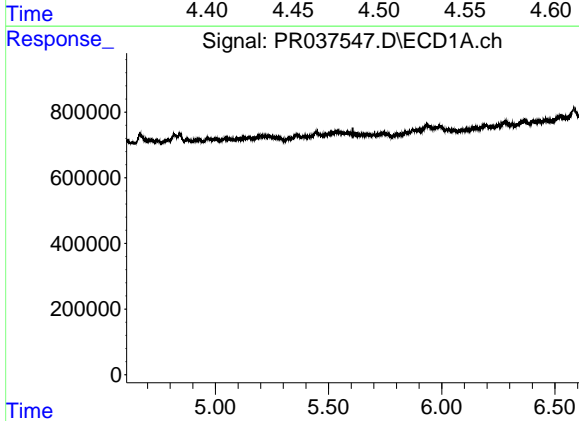
R.T.: 0.000 min
 Exp R.T. : 5.545 min
 Response: 0
 Conc: N.D.

Instrument :
 ECD_R
 ClientSampleId :
 SSSI-0419-S-DH-8



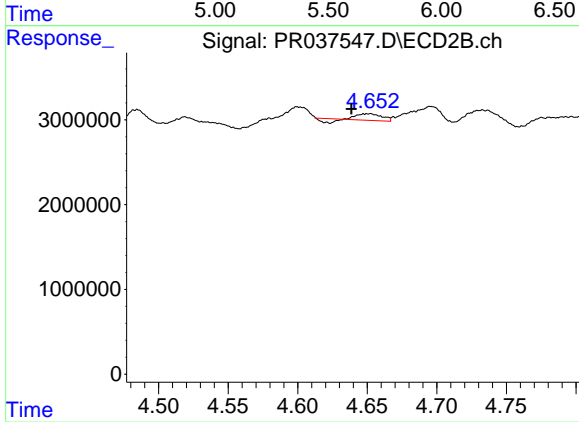
#17 AR-1242-2

R.T.: 4.485 min
 Delta R.T.: 0.017 min
 Response: 2711167
 Conc: 11.88 ng/ml



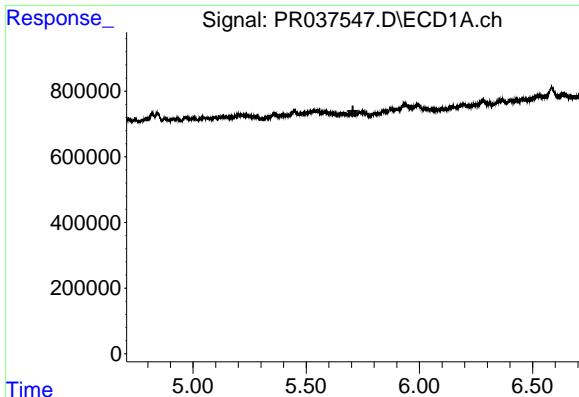
#18 AR-1242-3

R.T.: 0.000 min
 Exp R.T. : 5.608 min
 Response: 0
 Conc: N.D.



#18 AR-1242-3

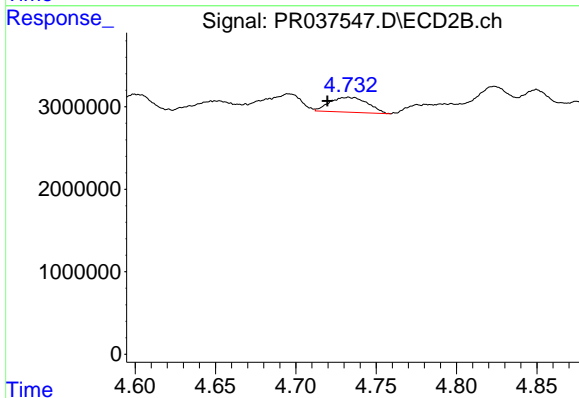
R.T.: 4.653 min
 Delta R.T.: 0.014 min
 Response: 724180
 Conc: 6.26 ng/ml



#19 AR-1242-4

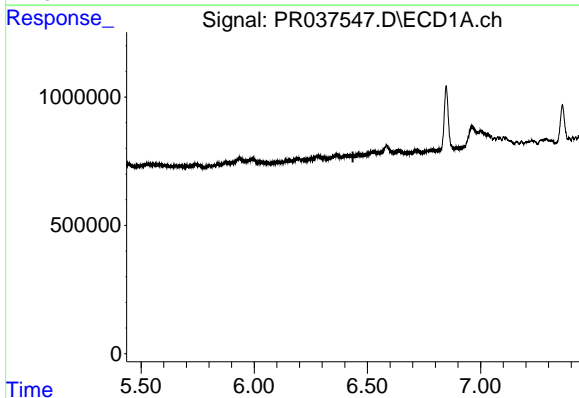
R.T.: 0.000 min
 Exp R.T. : 5.706 min
 Response: 0
 Conc: N.D.

Instrument :
 ECD_R
 ClientSampleId :
 SSSI-0419-S-DH-8



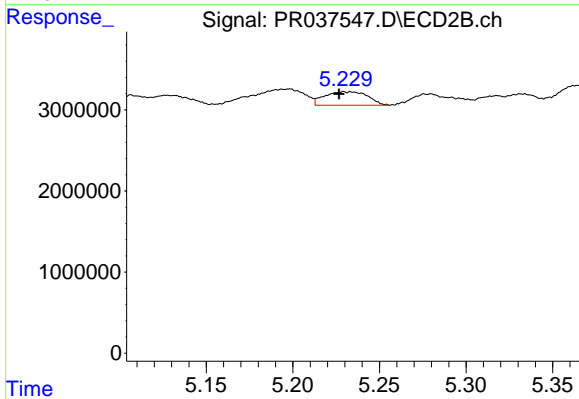
#19 AR-1242-4

R.T.: 4.733 min
 Delta R.T.: 0.013 min
 Response: 2967683
 Conc: 27.00 ng/ml



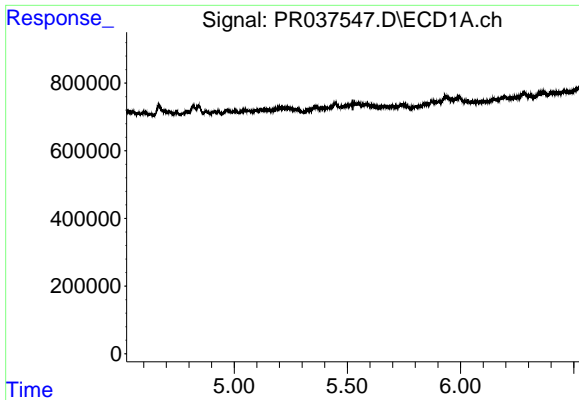
#20 AR-1242-5

R.T.: 0.000 min
 Exp R.T. : 6.436 min
 Response: 0
 Conc: N.D.



#20 AR-1242-5

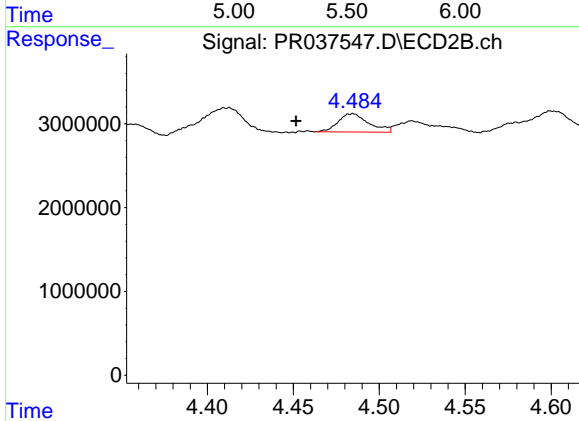
R.T.: 5.229 min
 Delta R.T.: 0.003 min
 Response: 2886935
 Conc: 17.42 ng/ml



#21 AR-1248-1

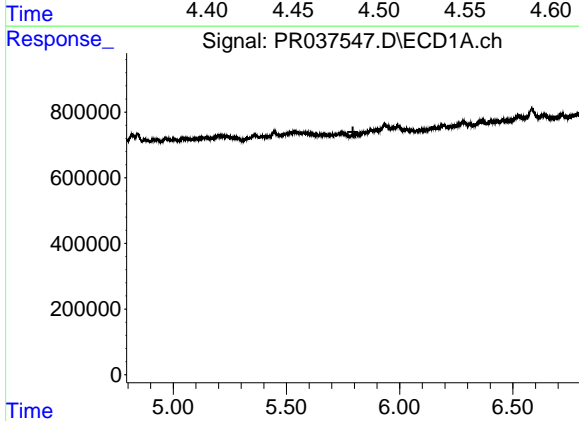
R.T.: 0.000 min
 Exp R.T. : 5.525 min
 Response: 0
 Conc: N.D.

Instrument :
 ECD_R
 ClientSampleId :
 SSSI-0419-S-DH-8



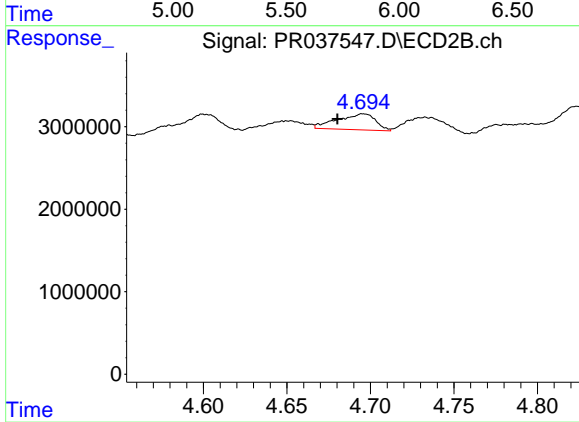
#21 AR-1248-1

R.T.: 4.485 min
 Delta R.T.: 0.033 min
 Response: 2711167
 Conc: 26.93 ng/ml



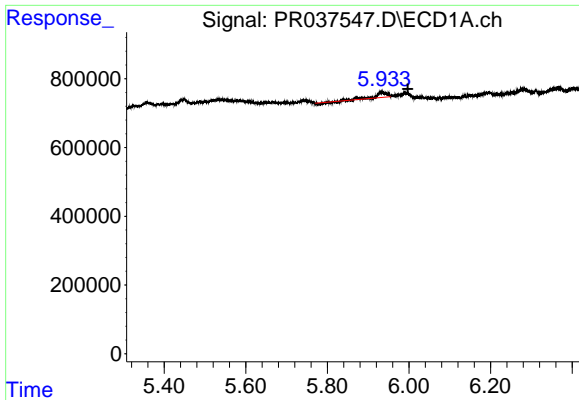
#22 AR-1248-2

R.T.: 0.000 min
 Exp R.T. : 5.793 min
 Response: 0
 Conc: N.D.



#22 AR-1248-2

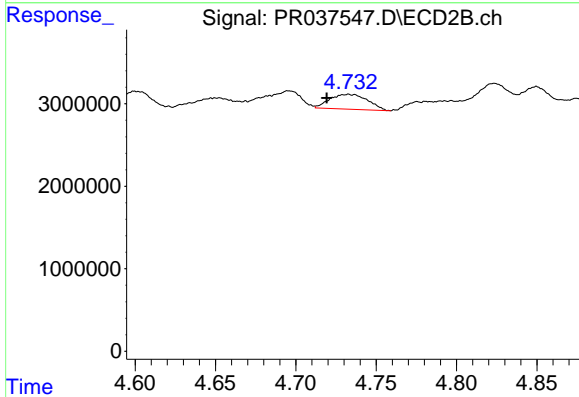
R.T.: 4.695 min
 Delta R.T.: 0.015 min
 Response: 3090687
 Conc: 22.65 ng/ml



#23 AR-1248-3

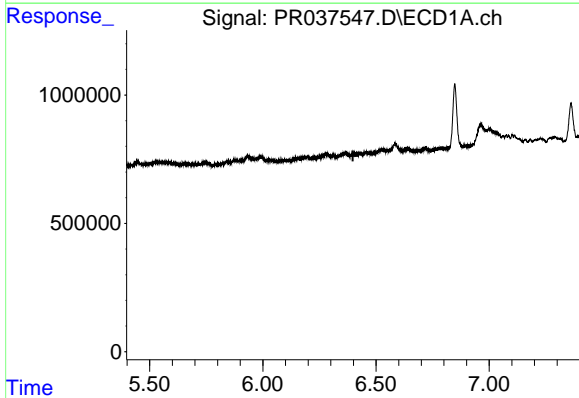
R.T.: 5.935 min
 Delta R.T.: -0.062 min
 Response: 258298
 Conc: 6.31 ng/ml

Instrument :
 ECD_R
ClientSampleId :
 SSSI-0419-S-DH-8



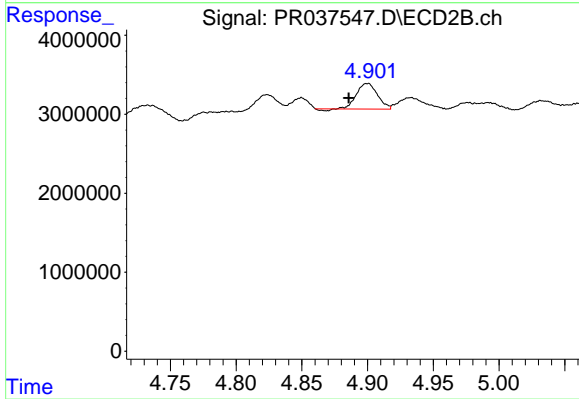
#23 AR-1248-3

R.T.: 4.733 min
 Delta R.T.: 0.014 min
 Response: 2967683
 Conc: 21.20 ng/ml



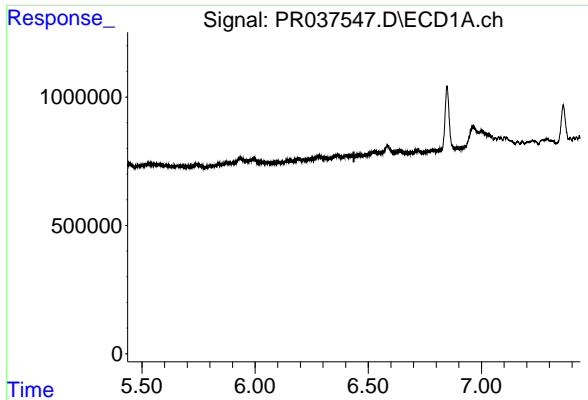
#24 AR-1248-4

R.T.: 0.000 min
 Exp R.T. : 6.398 min
 Response: 0
 Conc: N.D.



#24 AR-1248-4

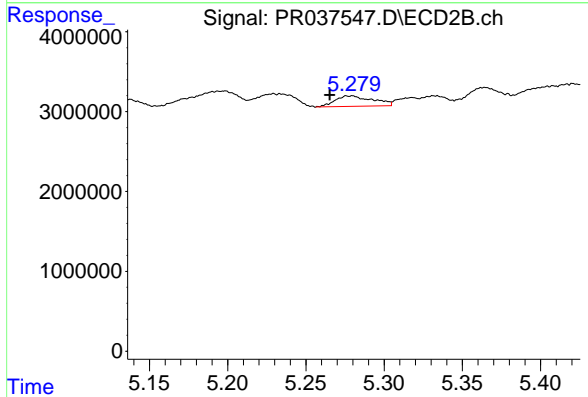
R.T.: 4.901 min
 Delta R.T.: 0.015 min
 Response: 3549063
 Conc: 19.94 ng/ml



#25 AR-1248-5

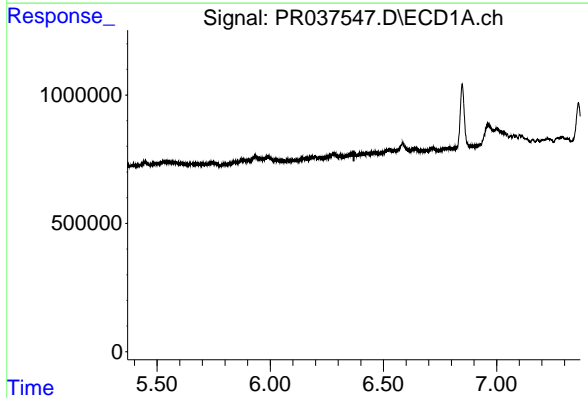
R.T.: 0.000 min
 Exp R.T. : 6.436 min
 Response: 0
 Conc: N.D.

Instrument :
 ECD_R
 ClientSampleId :
 SSSI-0419-S-DH-8



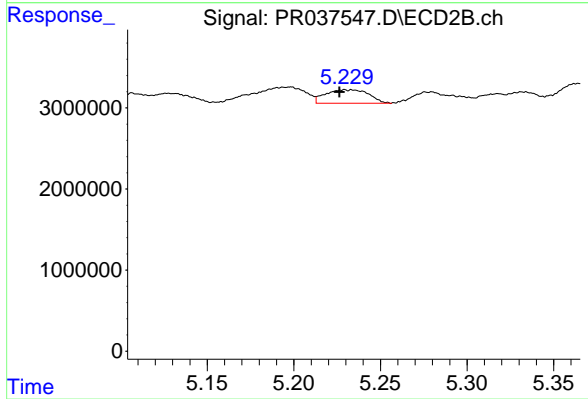
#25 AR-1248-5

R.T.: 5.276 min
 Delta R.T.: 0.011 min
 Response: 2185979
 Conc: 11.18 ng/ml



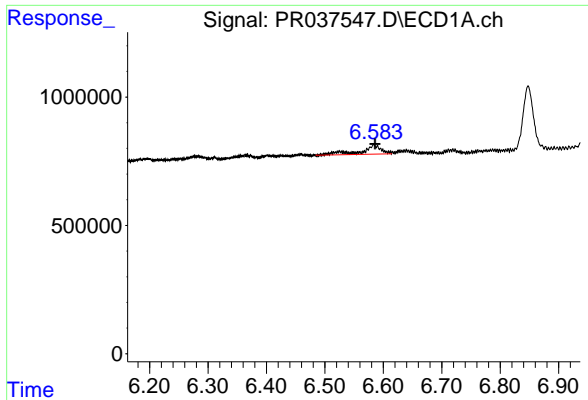
#26 AR-1254-1

R.T.: 0.000 min
 Exp R.T. : 6.369 min
 Response: 0
 Conc: N.D.



#26 AR-1254-1

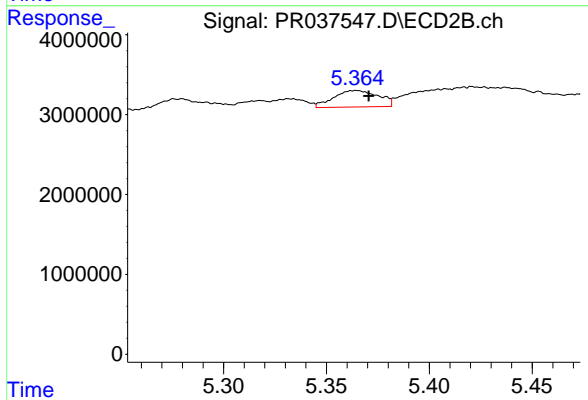
R.T.: 5.229 min
 Delta R.T.: 0.003 min
 Response: 2886935
 Conc: 8.38 ng/ml



#27 AR-1254-2

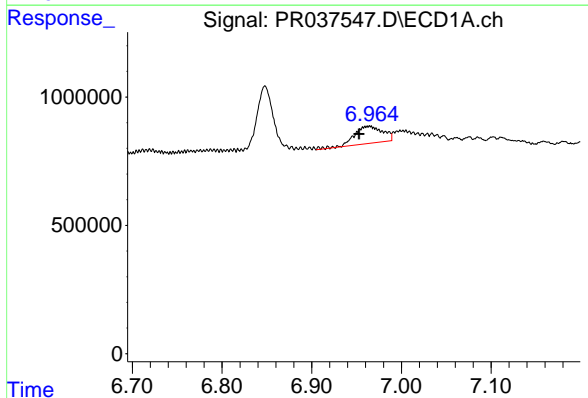
R.T.: 6.584 min
 Delta R.T.: -0.002 min
 Response: 851607
 Conc: 9.94 ng/ml

Instrument :
 ECD_R
 ClientSampleId :
 SSSI-0419-S-DH-8



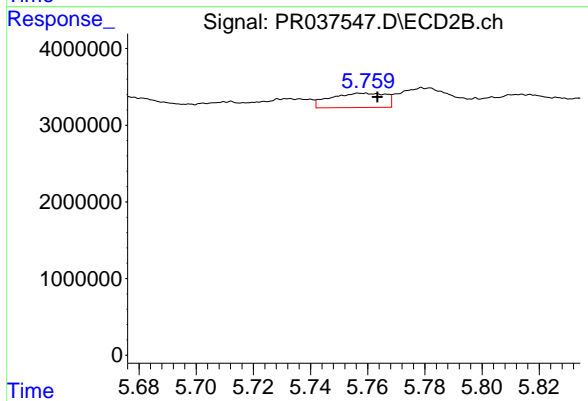
#27 AR-1254-2

R.T.: 5.365 min
 Delta R.T.: -0.006 min
 Response: 3135375
 Conc: 10.47 ng/ml



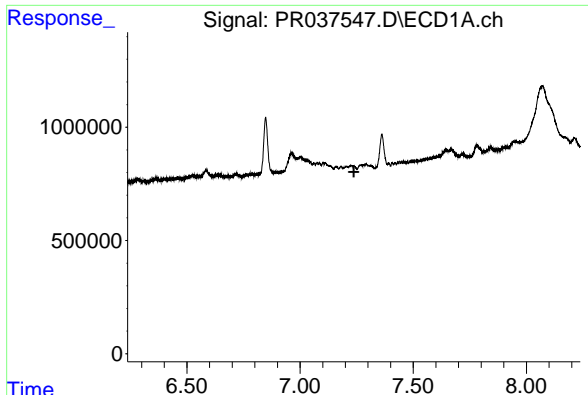
#28 AR-1254-3

R.T.: 6.964 min
 Delta R.T.: 0.012 min
 Response: 1483087
 Conc: 16.30 ng/ml



#28 AR-1254-3

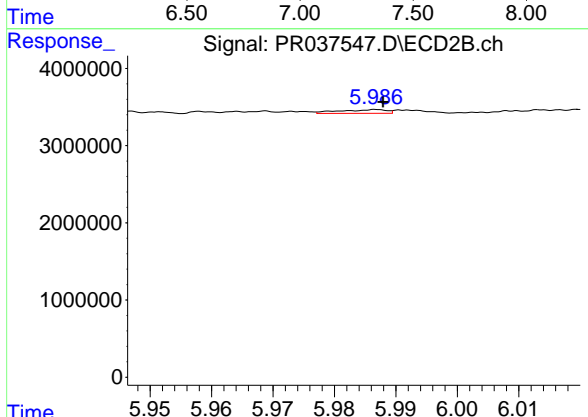
R.T.: 5.757 min
 Delta R.T.: -0.006 min
 Response: 2511769
 Conc: 5.30 ng/ml



#29 AR-1254-4

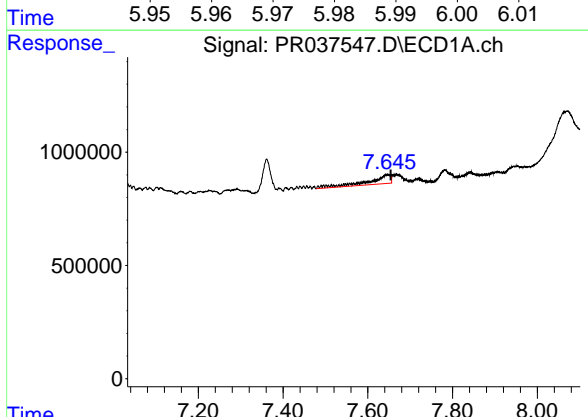
R.T.: 0.000 min
 Exp R.T.: 7.238 min
 Response: 0
 Conc: N.D.

Instrument :
 ECD_R
 ClientSampleId :
 SSSI-0419-S-DH-8



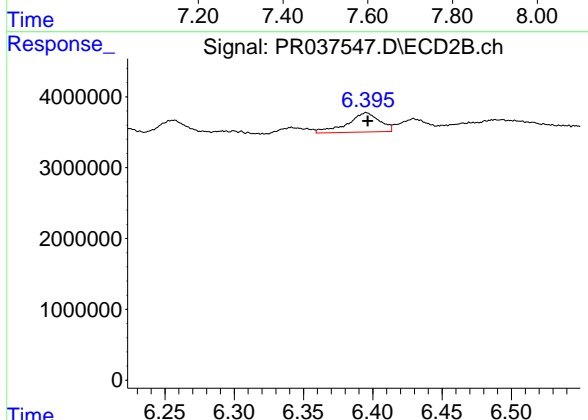
#29 AR-1254-4

R.T.: 5.987 min
 Delta R.T.: 0.000 min
 Response: 257026
 Conc: 0.73 ng/ml



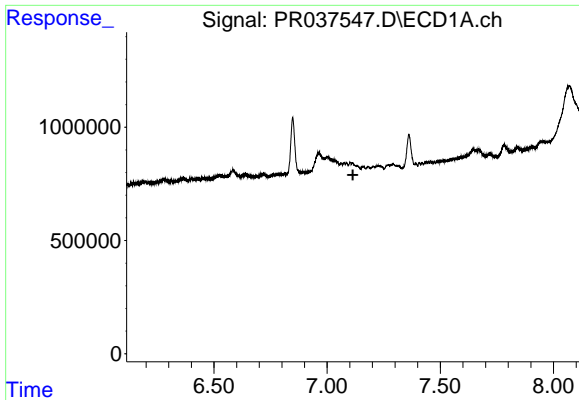
#30 AR-1254-5

R.T.: 7.646 min
 Delta R.T.: -0.008 min
 Response: 1410581
 Conc: 19.62 ng/ml



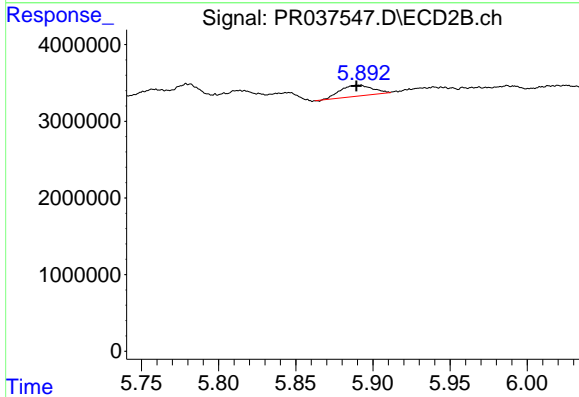
#30 AR-1254-5

R.T.: 6.395 min
 Delta R.T.: 0.000 min
 Response: 4416248
 Conc: 9.97 ng/ml

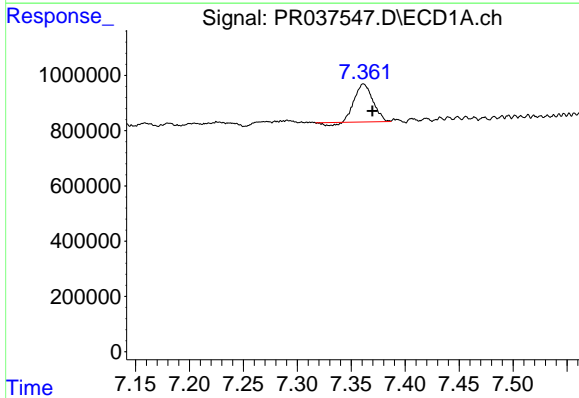


#31 AR-1260-1
 R.T.: 0.000 min
 Exp R.T.: 7.114 min
 Response: 0
 Conc: N.D.

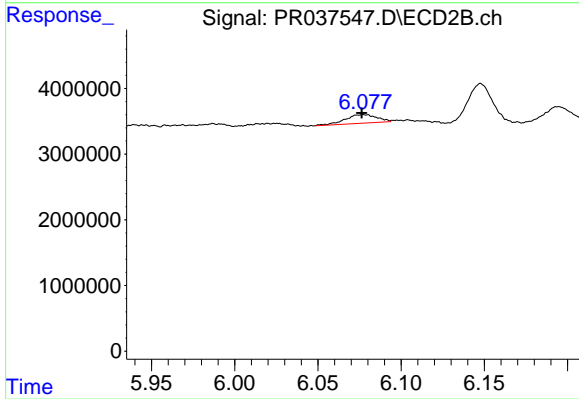
Instrument :
 ECD_R
ClientSampleId :
 SSSI-0419-S-DH-8



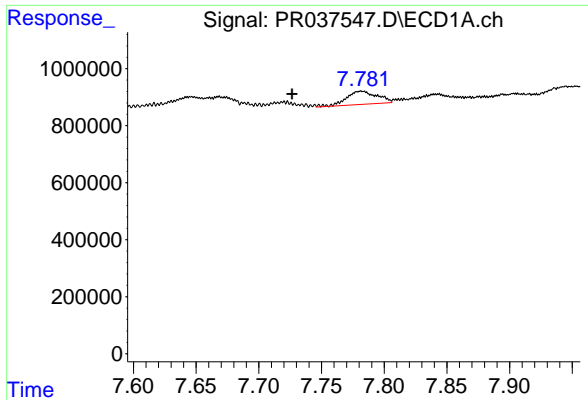
#31 AR-1260-1
 R.T.: 5.892 min
 Delta R.T.: 0.003 min
 Response: 2070294
 Conc: 7.08 ng/ml



#32 AR-1260-2
 R.T.: 7.361 min
 Delta R.T.: -0.008 min
 Response: 1587034
 Conc: 19.91 ng/ml

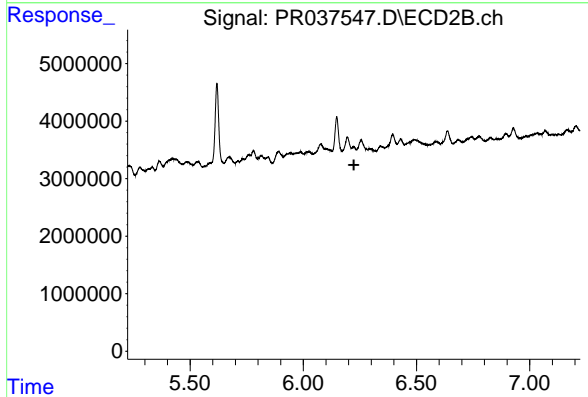


#32 AR-1260-2
 R.T.: 6.077 min
 Delta R.T.: 0.001 min
 Response: 1721794
 Conc: 3.74 ng/ml

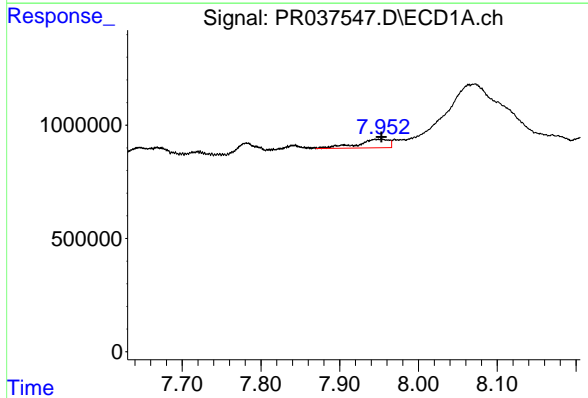


#33 AR-1260-3
 R.T.: 7.782 min
 Delta R.T.: 0.055 min
 Response: 795149
 Conc: 12.71 ng/ml

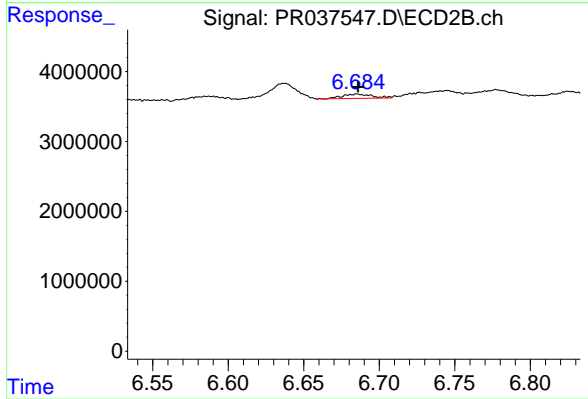
Instrument :
 ECD_R
ClientSampleId :
 SSSI-0419-S-DH-8



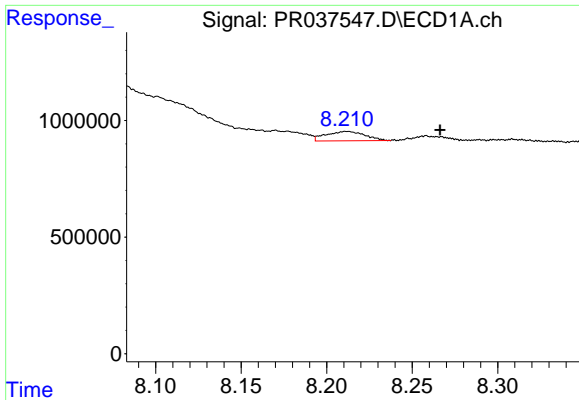
#33 AR-1260-3
 R.T.: 6.222 min
 Delta R.T.: -0.001 min
 Response: -487391
 Conc: N.D.



#34 AR-1260-4
 R.T.: 7.945 min
 Delta R.T.: -0.008 min
 Response: 1049612
 Conc: 14.11 ng/ml



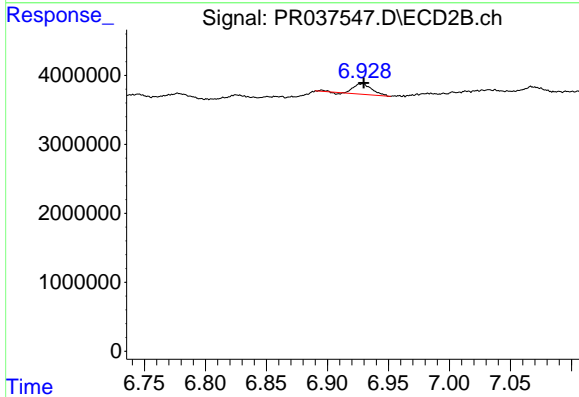
#34 AR-1260-4
 R.T.: 6.686 min
 Delta R.T.: 0.000 min
 Response: 827558
 Conc: 2.72 ng/ml



#35 AR-1260-5

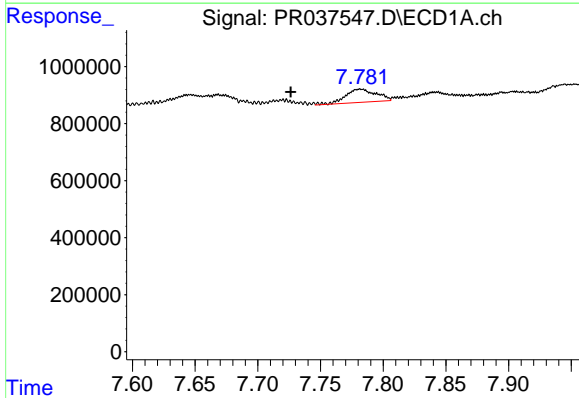
R.T.: 8.212 min
 Delta R.T.: -0.054 min
 Response: 639949
 Conc: 4.42 ng/ml

Instrument :
 ECD_R
ClientSampleId :
 SSSI-0419-S-DH-8



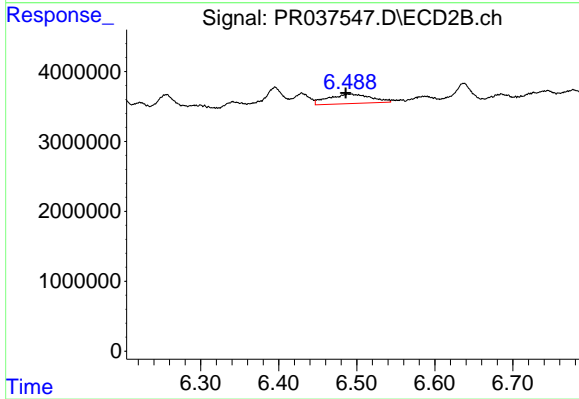
#35 AR-1260-5

R.T.: 6.928 min
 Delta R.T.: -0.001 min
 Response: 1590136
 Conc: 1.83 ng/ml



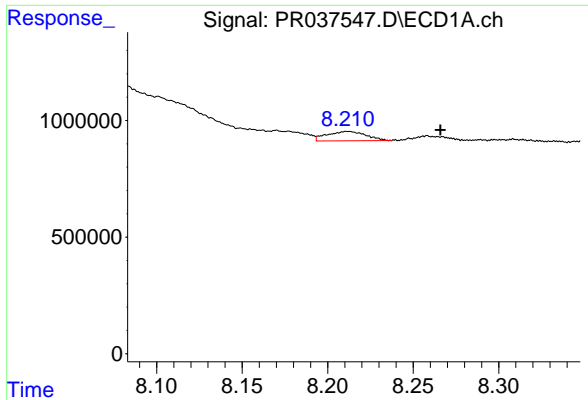
#36 AR-1262-1

R.T.: 7.782 min
 Delta R.T.: 0.056 min
 Response: 795149
 Conc: 7.61 ng/ml



#36 AR-1262-1

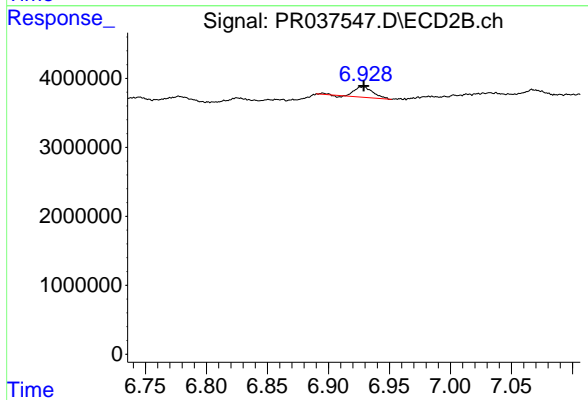
R.T.: 6.488 min
 Delta R.T.: 0.002 min
 Response: 5097105
 Conc: 20.34 ng/ml



#37 AR-1262-2

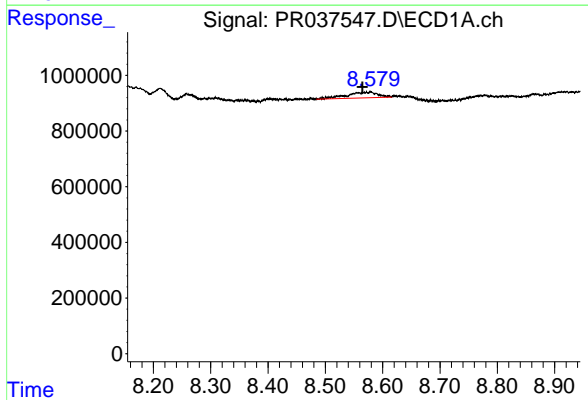
R.T.: 8.212 min
 Delta R.T.: -0.054 min
 Response: 639949
 Conc: 3.29 ng/ml

Instrument :
 ECD_R
 ClientSampleId :
 SSSI-0419-S-DH-8



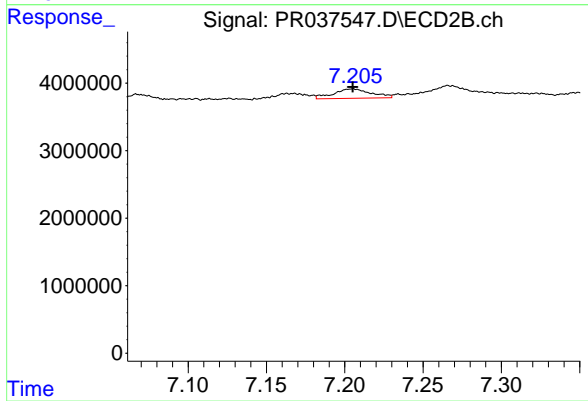
#37 AR-1262-2

R.T.: 6.928 min
 Delta R.T.: 0.000 min
 Response: 1590136
 Conc: 1.27 ng/ml



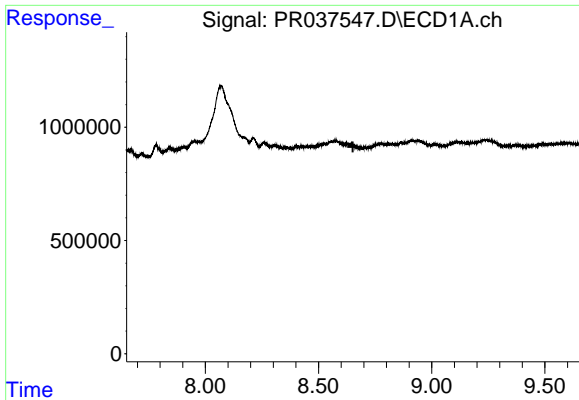
#38 AR-1262-3

R.T.: 8.579 min
 Delta R.T.: 0.014 min
 Response: 759358
 Conc: 5.77 ng/ml



#38 AR-1262-3

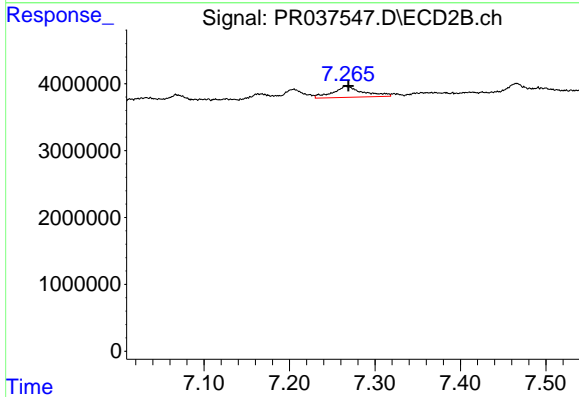
R.T.: 7.205 min
 Delta R.T.: 0.000 min
 Response: 2376862
 Conc: 4.34 ng/ml



#39 AR-1262-4

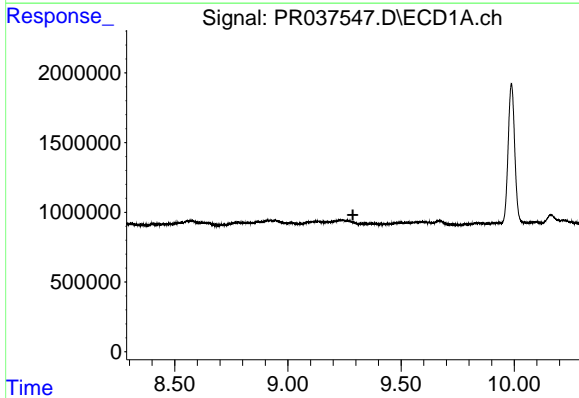
R.T.: 0.000 min
 Exp R.T. : 8.652 min
 Response: 0
 Conc: N.D.

Instrument :
 ECD_R
 ClientSampleId :
 SSSI-0419-S-DH-8



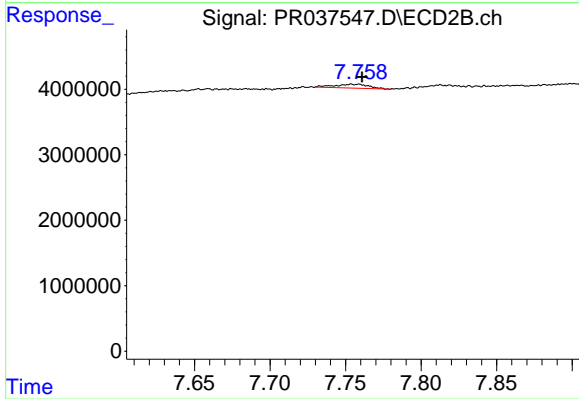
#39 AR-1262-4

R.T.: 7.266 min
 Delta R.T.: -0.003 min
 Response: 4081910
 Conc: 4.55 ng/ml



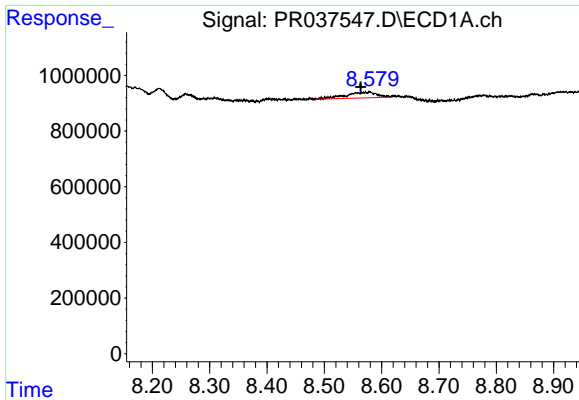
#40 AR-1262-5

R.T.: 0.000 min
 Exp R.T. : 9.287 min
 Response: 0
 Conc: N.D.



#40 AR-1262-5

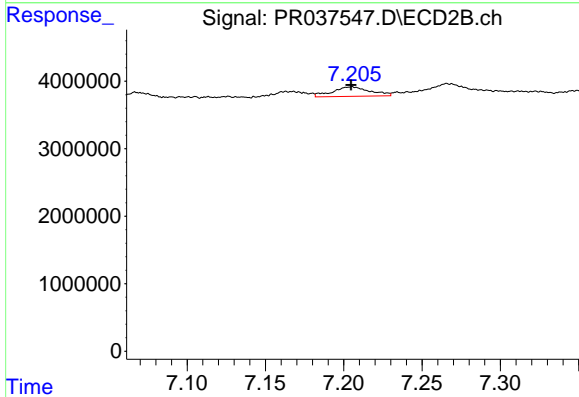
R.T.: 7.754 min
 Delta R.T.: -0.007 min
 Response: 950957
 Conc: 2.49 ng/ml



#41 AR-1268-1

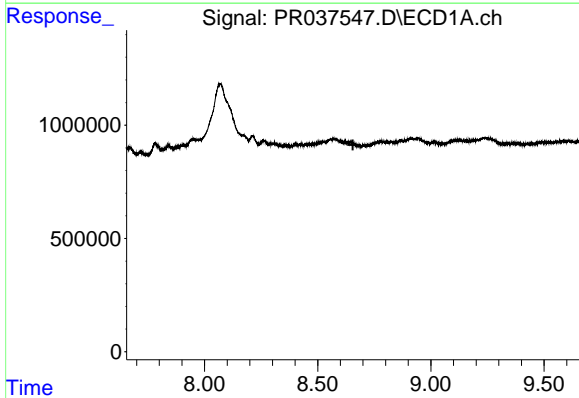
R.T.: 8.579 min
 Delta R.T.: 0.016 min
 Response: 759358
 Conc: 4.24 ng/ml

Instrument :
 ECD_R
 ClientSampleId :
 SSSI-0419-S-DH-8



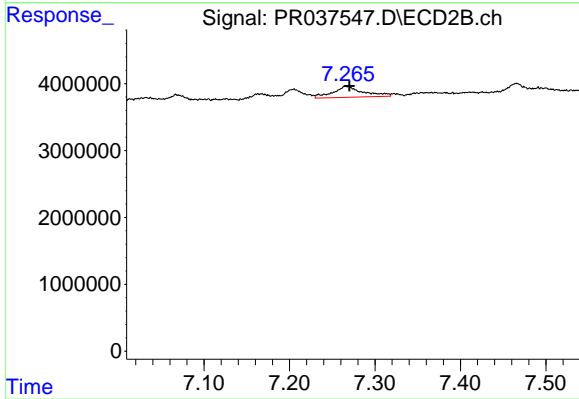
#41 AR-1268-1

R.T.: 7.205 min
 Delta R.T.: 0.000 min
 Response: 2376862
 Conc: 1.93 ng/ml



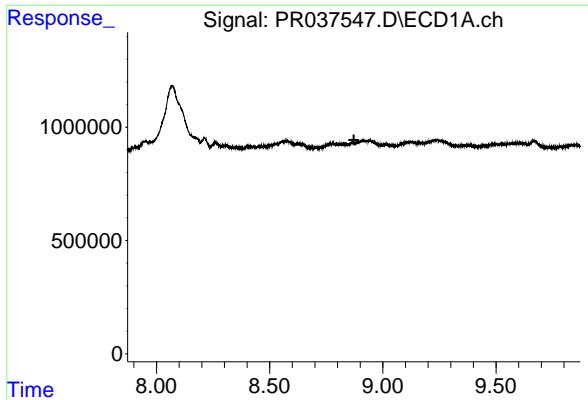
#42 AR-1268-2

R.T.: 0.000 min
 Exp R.T. : 8.655 min
 Response: 0
 Conc: N.D.



#42 AR-1268-2

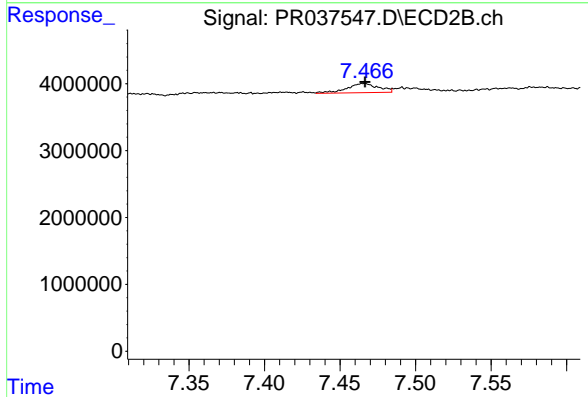
R.T.: 7.266 min
 Delta R.T.: -0.004 min
 Response: 4081910
 Conc: 3.85 ng/ml



#43 AR-1268-3

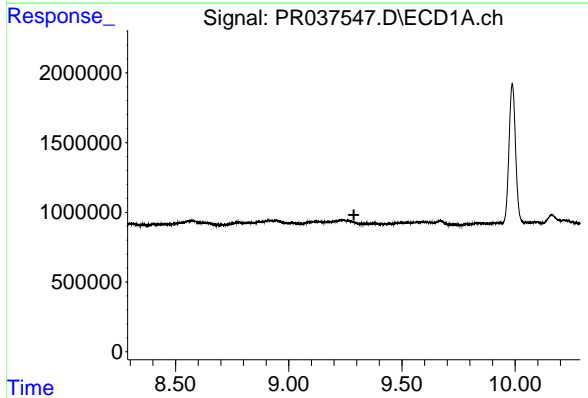
R.T.: 0.000 min
 Exp R.T. : 8.872 min
 Response: 0
 Conc: N.D.

Instrument :
 ECD_R
 ClientSampleId :
 SSSI-0419-S-DH-8



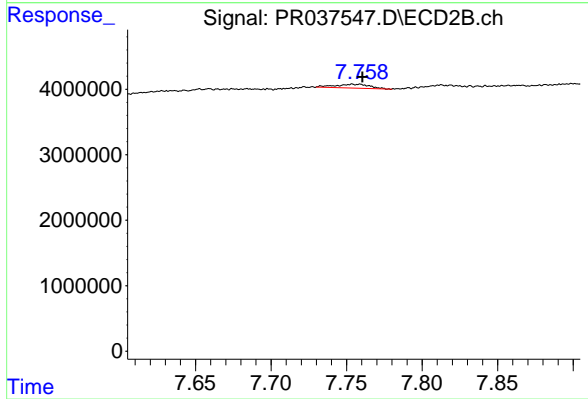
#43 AR-1268-3

R.T.: 7.466 min
 Delta R.T.: 0.000 min
 Response: 1999711
 Conc: 2.26 ng/ml



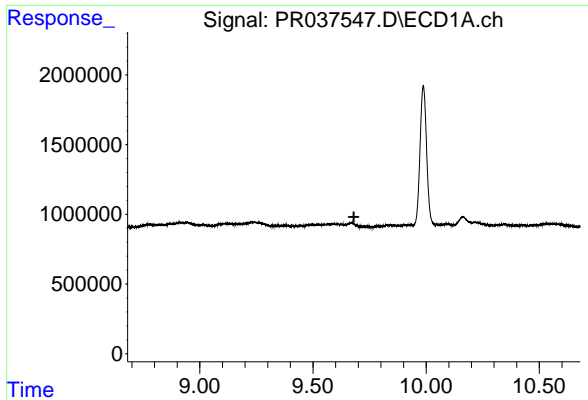
#44 AR-1268-4

R.T.: 0.000 min
 Exp R.T. : 9.288 min
 Response: 0
 Conc: N.D.



#44 AR-1268-4

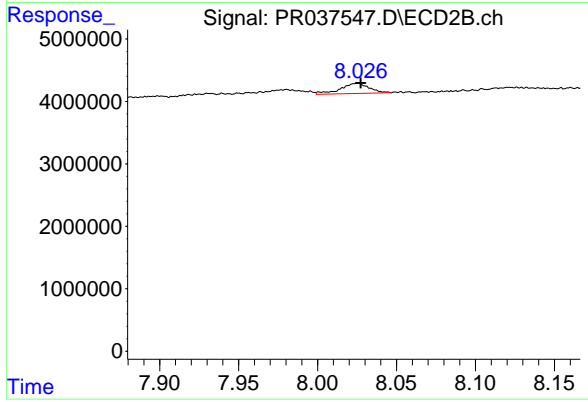
R.T.: 7.754 min
 Delta R.T.: -0.007 min
 Response: 950957
 Conc: 2.62 ng/ml



#45 AR-1268-5

R.T.: 0.000 min
Exp R.T.: 9.681 min
Response: 0
Conc: N.D.

Instrument :
ECD_R
ClientSampleId :
SSSI-0419-S-DH-8



#45 AR-1268-5

R.T.: 8.025 min
Delta R.T.: -0.002 min
Response: 2036078
Conc: 0.80 ng/ml