

Data Path : Z:\pestpcbsrv\HPCHEM1\ECD_R\Data\PR050219\
 Data File : PR037559.D
 Signal(s) : Signal #1: ECD1A.ch Signal #2: ECD2B.ch
 Acq On : 02 May 2019 16:13
 Operator : SM\SJ
 Sample : PB119287BL
 Misc :
 ALS Vial : 10 Sample Multiplier: 1

Instrument :
 ECD_R
 ClientSampleId :
 PB119287BL

Integration File signal 1: autoint1.e
 Integration File signal 2: autoint2.e
 Quant Time: May 03 01:03:20 2019
 Quant Method : Z:\pestpcbsrv\HPCHEM1\ECD_R\Method\PR042219.M
 Quant Title : GC EXTRACTABLES
 QLast Update : Mon Apr 22 17:27:39 2019
 Response via : Initial Calibration
 Integrator: ChemStation

Volume Inj. : 2 µl
 Signal #1 Phase : ZB-MR2 Signal #2 Phase: ZB-MR2
 Signal #1 Info : 30Mx0.32mmx 0.50µ Signal #2 Info : 30M x 0.32mm x 0.25µm

Compound	RT#1	RT#2	Resp#1	Resp#2	ng/ml	ng/ml

System Monitoring Compounds						
1) SA Tetrachlo...	4.358	3.403	28362534	110.7E6	22.672	23.084
2) SA Decachlor...	9.980	8.240	25348339	106.9E6	19.166	18.353
Target Compounds						
3) L1 AR-1016-1	0.000	4.466	0	810575	N.D.	4.452 #
4) L1 AR-1016-2	0.000	4.466	0	810575	N.D.	2.873 #
5) L1 AR-1016-3	0.000	4.651	0	122556	N.D.	0.852 #
6) L1 AR-1016-4	0.000	4.690	0	578993	N.D.	5.233 #
7) L1 AR-1016-5	0.000	4.900	0	704057	N.D.	4.632 #
8) L2 AR-1221-1	0.000	3.615	0	199744	N.D.	3.923 #
9) L2 AR-1221-2	0.000	3.691	0	1686422	N.D.	45.412 #
10) L2 AR-1221-3	0.000	3.793	0	159573	N.D.	1.303 #
11) L3 AR-1232-1	0.000	3.793	0	159573	N.D.	1.364 #
12) L3 AR-1232-2	0.000	4.466	0	810575	N.D.	5.864 #
13) L3 AR-1232-3	0.000	4.651	0	122556	N.D.	1.746 #
14) L3 AR-1232-4	0.000	4.711	0	44785	N.D.	0.751 #
15) L3 AR-1232-5	0.000	4.900	0	704057	N.D.	10.317 #
16) L4 AR-1242-1	0.000	4.466	0	810575	N.D.	5.532 #
17) L4 AR-1242-2	0.000	4.466	0	810575	N.D.	3.553 #
18) L4 AR-1242-3	0.000	4.651	0	122556	N.D.	1.060 #
19) L4 AR-1242-4	0.000	4.711	0	44785	N.D.	0.407 #
20) L4 AR-1242-5	0.000	5.240	0	2973890	N.D.	17.947 #
21) L5 AR-1248-1	0.000	4.466	0	810575	N.D.	8.052 #
22) L5 AR-1248-2	0.000	4.690	0	578993	N.D.	4.243 #
23) L5 AR-1248-3	0.000	4.711	0	44785	N.D.	0.320 #
24) L5 AR-1248-4	0.000	4.900	0	704057	N.D.	3.956 #
25) L5 AR-1248-5	0.000	5.263	0	666421	N.D.	3.407 #
26) L6 AR-1254-1	0.000	5.240	0	2973890	N.D.	8.633 #
27) L6 AR-1254-2	0.000	5.368	0	314968	N.D.	1.052 #
28) L6 AR-1254-3	6.966	5.765	7666333	252140	84.279	0.532 #
30) L6 AR-1254-5	7.662	6.392	1201155	618161	16.710	1.396 #
31) L7 AR-1260-1	0.000	5.888	0	215747	N.D.	0.738 #
32) L7 AR-1260-2	7.431	6.072	475921	585436	5.971	1.271 #
33) L7 AR-1260-3	7.662	6.219	1201155	129311	19.195	0.363 #
34) L7 AR-1260-4	7.943	6.680	7592835	213342	102.049	0.700 #
35) L7 AR-1260-5	0.000	6.929	0	301347	N.D.	0.347 #
36) L8 AR-1262-1	7.662	6.485	1201155	823707	11.499	3.287 #
37) L8 AR-1262-2	0.000	6.929	0	301347	N.D.	0.240 #
38) L8 AR-1262-3	0.000	7.207	0	383529	N.D.	0.700 #
39) L8 AR-1262-4	8.718	7.278	433892	211146	4.417	0.235 #
40) L8 AR-1262-5	0.000	7.756	0	110371	N.D.	0.288 #
41) L9 AR-1268-1	0.000	7.207	0	383529	N.D.	0.312 #
42) L9 AR-1268-2	8.718	7.278	433892	211146	2.638	0.199 #

Data Path : Z:\pestpcbsrv\HPCHEM1\ECD_R\Data\PR050219\
 Data File : PR037559.D
 Signal(s) : Signal #1: ECD1A.ch Signal #2: ECD2B.ch
 Acq On : 02 May 2019 16:13
 Operator : SM\SJ
 Sample : PB119287BL
 Misc :
 ALS Vial : 10 Sample Multiplier: 1

Instrument :
 ECD_R
 ClientSampleId :
 PB119287BL

Integration File signal 1: autoint1.e
 Integration File signal 2: autoint2.e
 Quant Time: May 03 01:03:20 2019
 Quant Method : Z:\pestpcbsrv\HPCHEM1\ECD_R\Method\PR042219.M
 Quant Title : GC EXTRACTABLES
 QLast Update : Mon Apr 22 17:27:39 2019
 Response via : Initial Calibration
 Integrator: ChemStation

Volume Inj. : 2 µl
 Signal #1 Phase : ZB-MR1 Signal #2 Phase: ZB-MR2
 Signal #1 Info : 30Mx0.32mmx 0.50µ Signal #2 Info : 30M x 0.32mm x 0.25µm

	Compound	RT#1	RT#2	Resp#1	Resp#2	ng/ml	ng/ml
43)	L9 AR-1268-3	0.000	7.461	0	956085	N.D.	1.079 #
44)	L9 AR-1268-4	0.000	7.756	0	110371	N.D.	0.304 #
45)	L9 AR-1268-5	0.000	8.019	0	1024740	N.D.	0.403 #

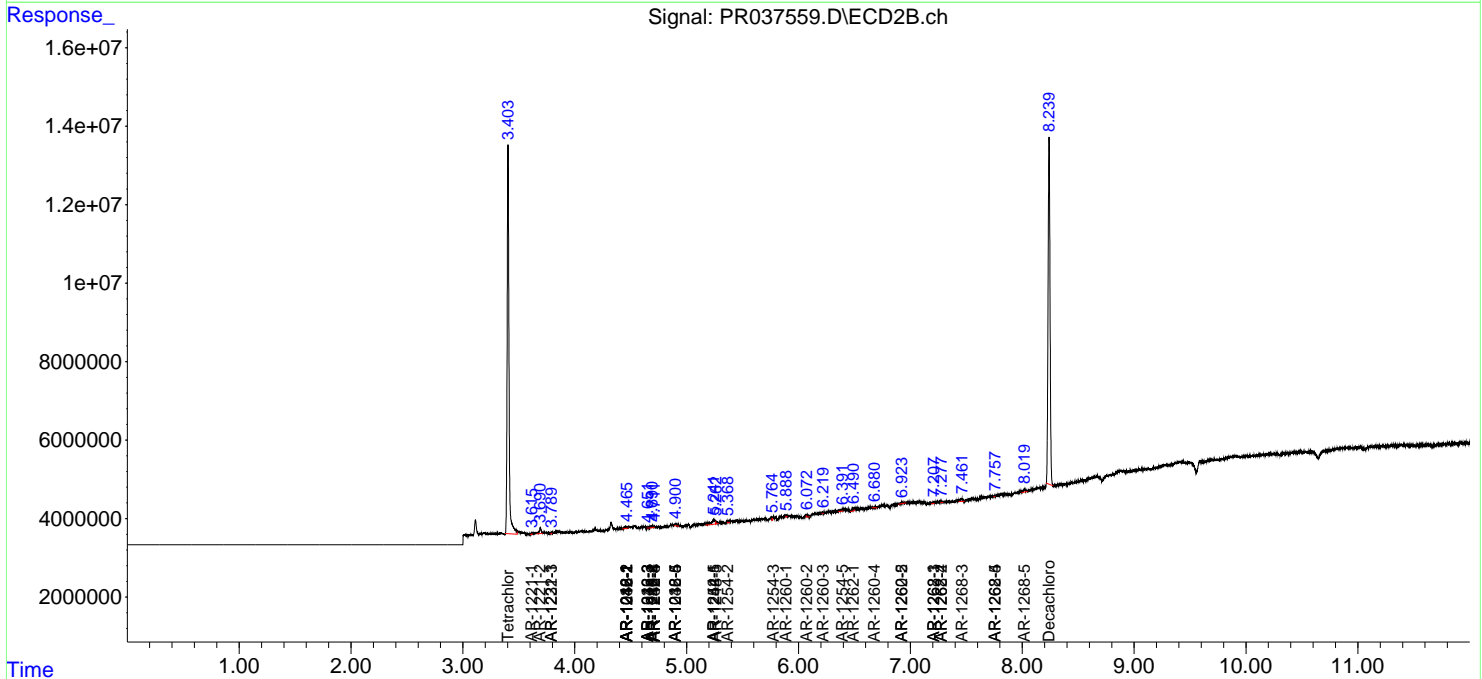
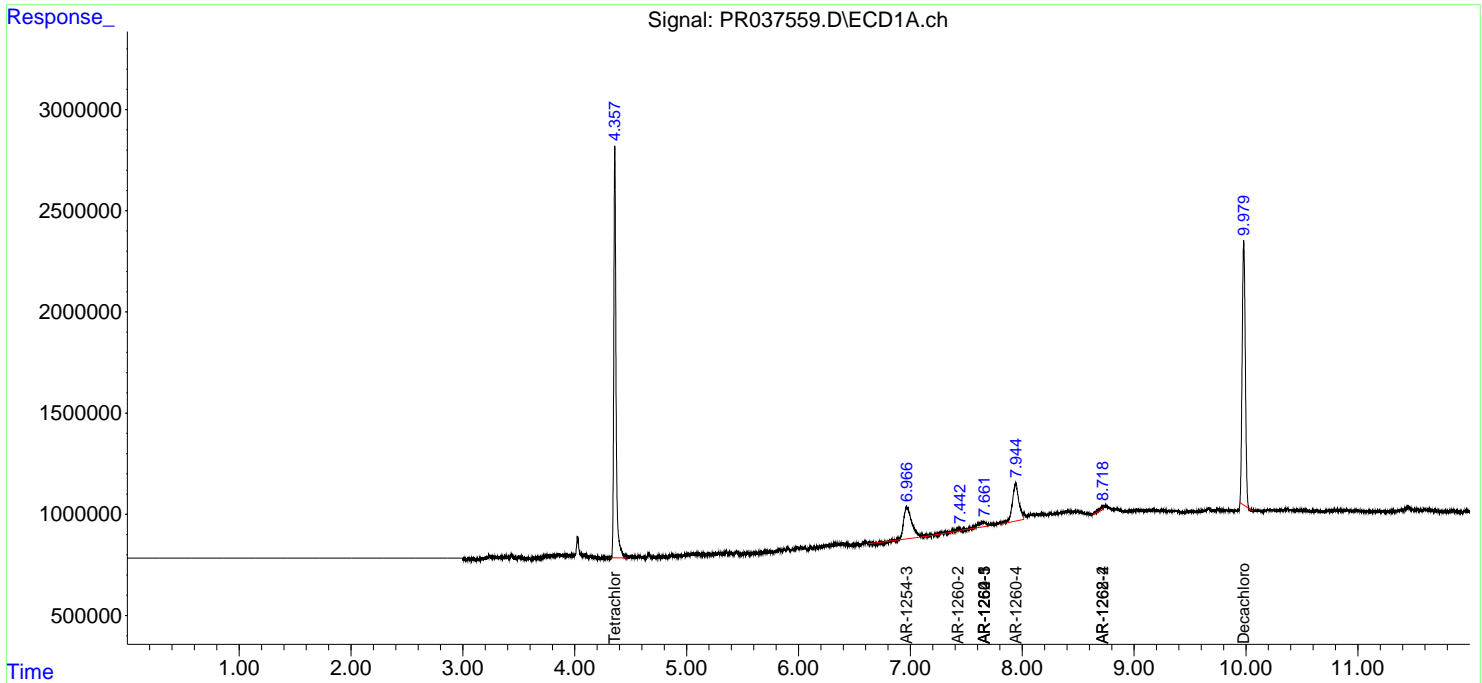
(f)=RT Delta > 1/2 Window (#)=Amounts differ by > 25% (m)=manual int.

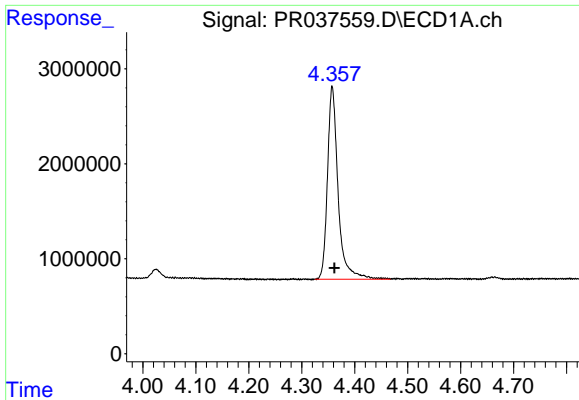
Data Path : Z:\pestpcbsrv\HPCHEM1\ECD_R\Data\PR050219\
 Data File : PR037559.D
 Signal(s) : Signal #1: ECD1A.ch Signal #2: ECD2B.ch
 Acq On : 02 May 2019 16:13
 Operator : SM\SJ
 Sample : PB119287BL
 Misc :
 ALS Vial : 10 Sample Multiplier: 1

Instrument :
 ECD_R
ClientSampled :
 PB119287BL

Integration File signal 1: autoint1.e
 Integration File signal 2: autoint2.e
 Quant Time: May 03 01:03:20 2019
 Quant Method : Z:\pestpcbsrv\HPCHEM1\ECD_R\Method\PR042219.M
 Quant Title : GC EXTRACTABLES
 QLast Update : Mon Apr 22 17:27:39 2019
 Response via : Initial Calibration
 Integrator: ChemStation

Volume Inj. : 2 µl
 Signal #1 Phase : ZB-MR1 Signal #2 Phase: ZB-MR2
 Signal #1 Info : 30Mx0.32mmx 0.50µ Signal #2 Info : 30M x 0.32mm x 0.25µm

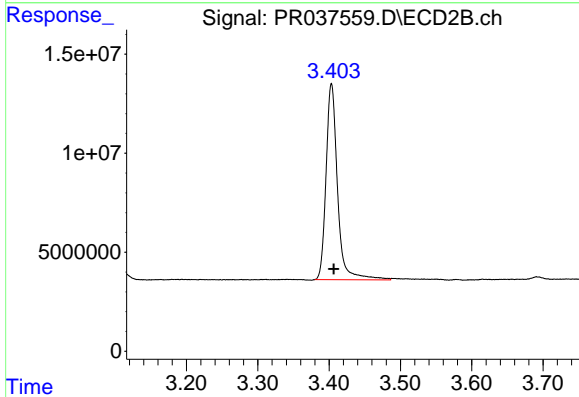




#1 Tetrachloro-m-xylene

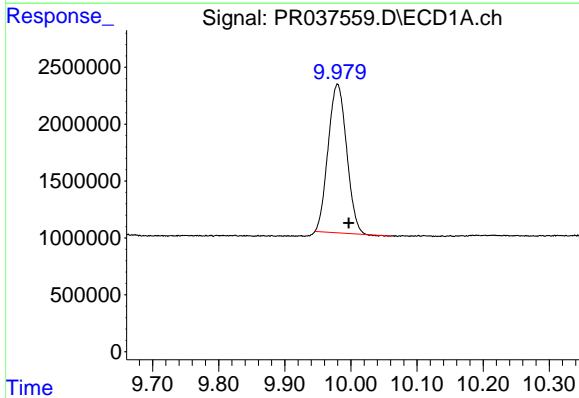
R.T.: 4.358 min
 Delta R.T.: -0.004 min
 Response: 28362534
 Conc: 22.67 ng/ml

Instrument :
 ECD_R
 ClientSampleId :
 PB119287BL



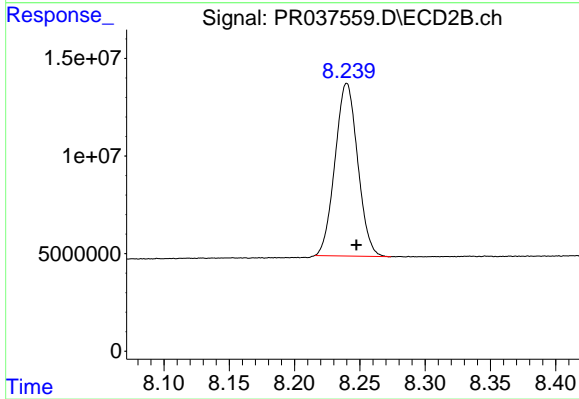
#1 Tetrachloro-m-xylene

R.T.: 3.403 min
 Delta R.T.: -0.003 min
 Response: 110698730
 Conc: 23.08 ng/ml



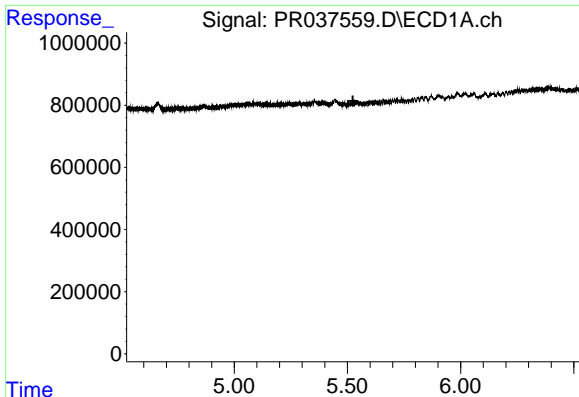
#2 Decachlorobiphenyl

R.T.: 9.980 min
 Delta R.T.: -0.017 min
 Response: 25348339
 Conc: 19.17 ng/ml



#2 Decachlorobiphenyl

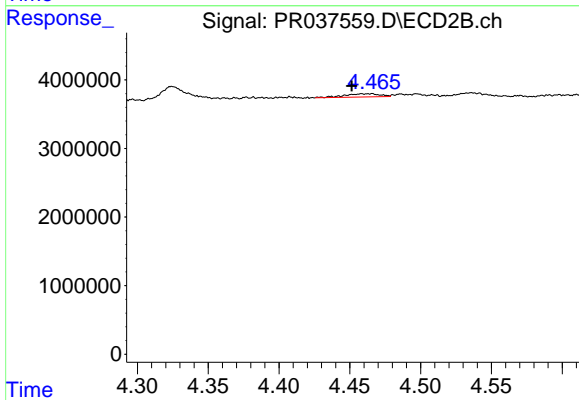
R.T.: 8.240 min
 Delta R.T.: -0.007 min
 Response: 106893382
 Conc: 18.35 ng/ml



#3 AR-1016-1

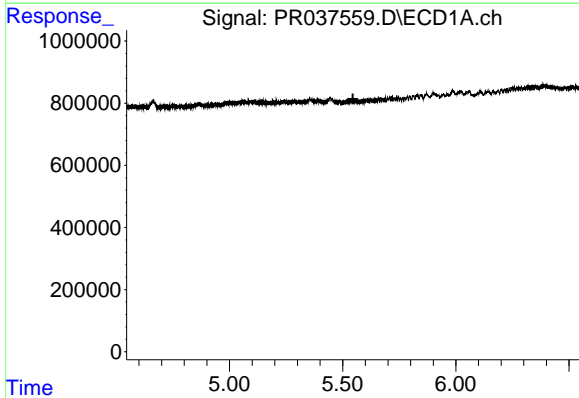
R.T.: 0.000 min
 Exp R.T. : 5.524 min
 Response: 0
 Conc: N.D.

Instrument :
 ECD_R
 ClientSampleId :
 PB119287BL



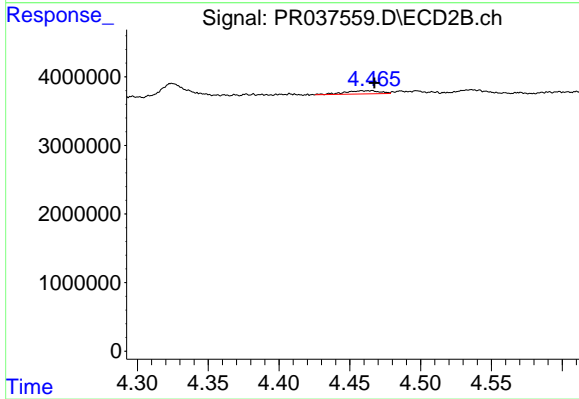
#3 AR-1016-1

R.T.: 4.466 min
 Delta R.T.: 0.015 min
 Response: 810575
 Conc: 4.45 ng/ml



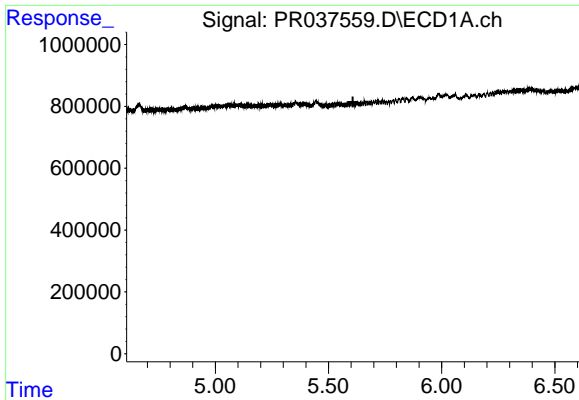
#4 AR-1016-2

R.T.: 0.000 min
 Exp R.T. : 5.545 min
 Response: 0
 Conc: N.D.



#4 AR-1016-2

R.T.: 4.466 min
 Delta R.T.: -0.001 min
 Response: 810575
 Conc: 2.87 ng/ml

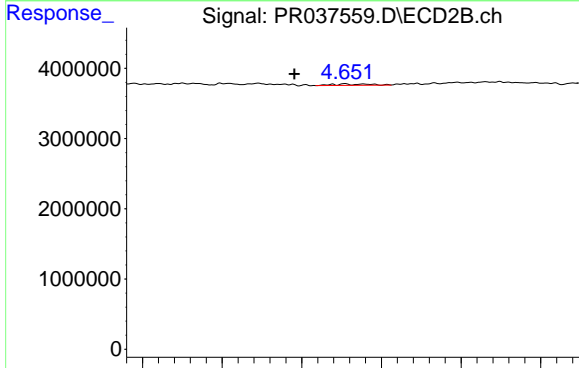


#5 AR-1016-3

R.T.: 0.000 min
 Exp R.T.: 5.608 min
 Response: 0
 Conc: N.D.

Instrument :
 ECD_R
 ClientSampleId :
 PB119287BL

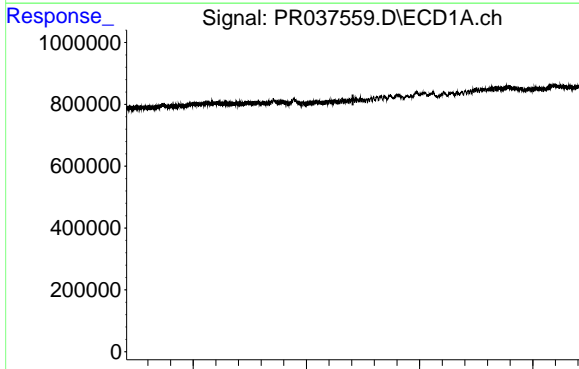
Time



#5 AR-1016-3

R.T.: 4.651 min
 Delta R.T.: 0.013 min
 Response: 122556
 Conc: 0.85 ng/ml

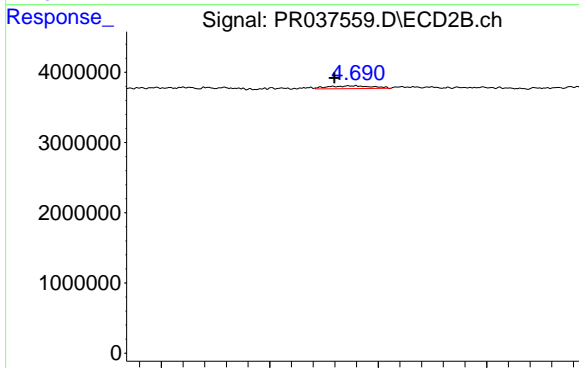
Time



#6 AR-1016-4

R.T.: 0.000 min
 Exp R.T.: 5.705 min
 Response: 0
 Conc: N.D.

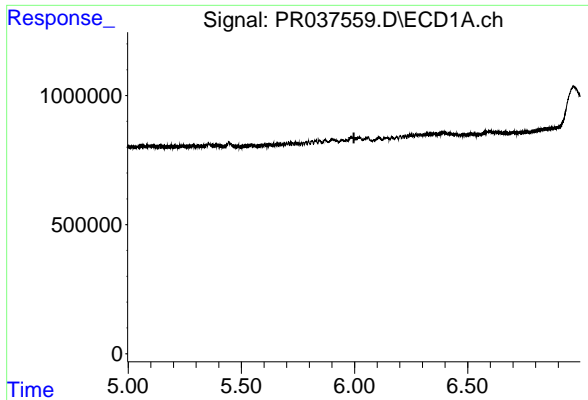
Time



#6 AR-1016-4

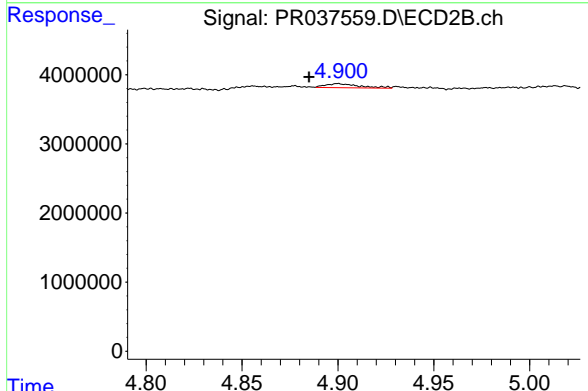
R.T.: 4.690 min
 Delta R.T.: 0.010 min
 Response: 578993
 Conc: 5.23 ng/ml

Time

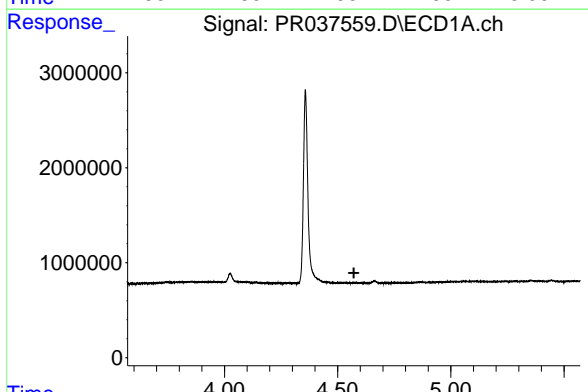


#7 AR-1016-5
 R.T.: 0.000 min
 Exp R.T.: 5.997 min
 Response: 0
 Conc: N.D.

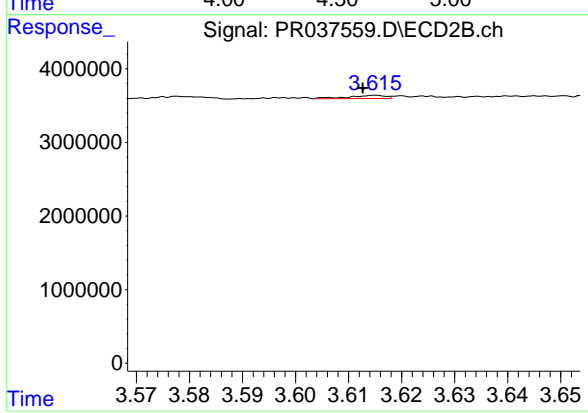
Instrument :
 ECD_R
ClientSampled :
 PB119287BL



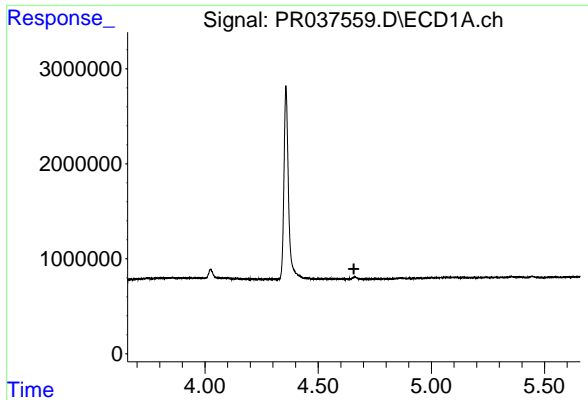
#7 AR-1016-5
 R.T.: 4.900 min
 Delta R.T.: 0.015 min
 Response: 704057
 Conc: 4.63 ng/ml



#8 AR-1221-1
 R.T.: 0.000 min
 Exp R.T.: 4.572 min
 Response: 0
 Conc: N.D.

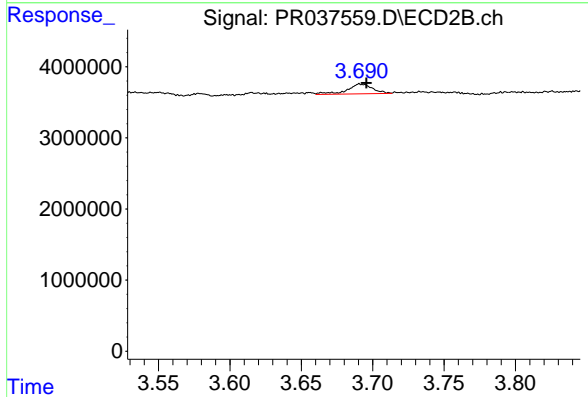


#8 AR-1221-1
 R.T.: 3.615 min
 Delta R.T.: 0.002 min
 Response: 199744
 Conc: 3.92 ng/ml

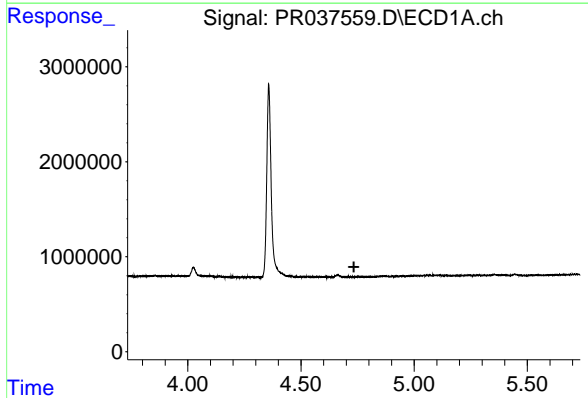


#9 AR-1221-2
 R.T.: 0.000 min
 Exp R.T. : 4.658 min
 Response: 0
 Conc: N.D.

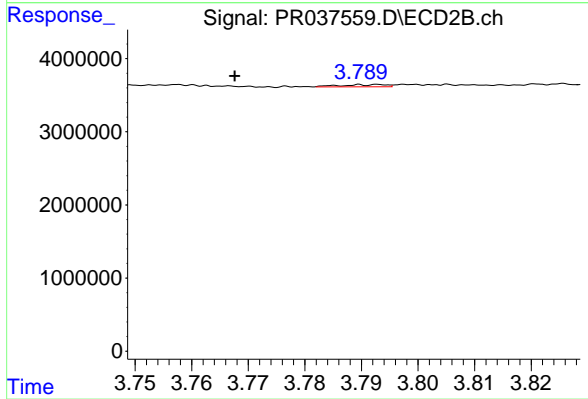
Instrument :
 ECD_R
 ClientSampleId :
 PB119287BL



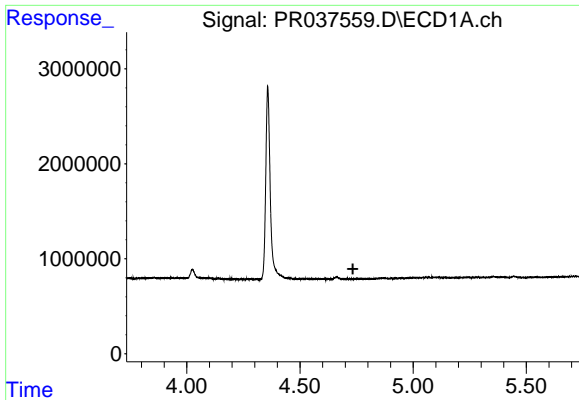
#9 AR-1221-2
 R.T.: 3.691 min
 Delta R.T.: -0.005 min
 Response: 1686422
 Conc: 45.41 ng/ml



#10 AR-1221-3
 R.T.: 0.000 min
 Exp R.T. : 4.734 min
 Response: 0
 Conc: N.D.



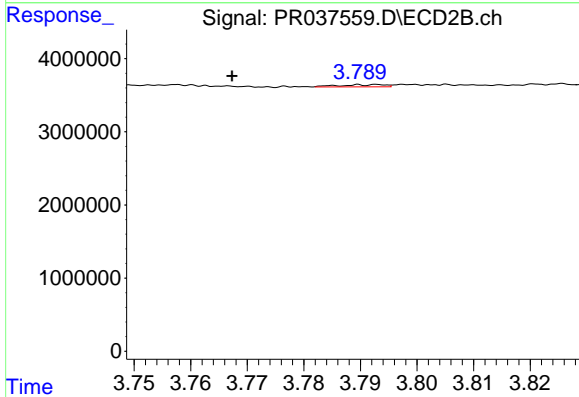
#10 AR-1221-3
 R.T.: 3.793 min
 Delta R.T.: 0.026 min
 Response: 159573
 Conc: 1.30 ng/ml



#11 AR-1232-1

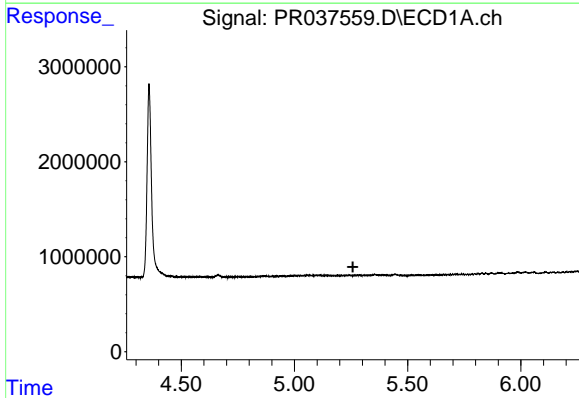
R.T.: 0.000 min
 Exp R.T. : 4.734 min
 Response: 0
 Conc: N.D.

Instrument :
 ECD_R
 ClientSampleId :
 PB119287BL



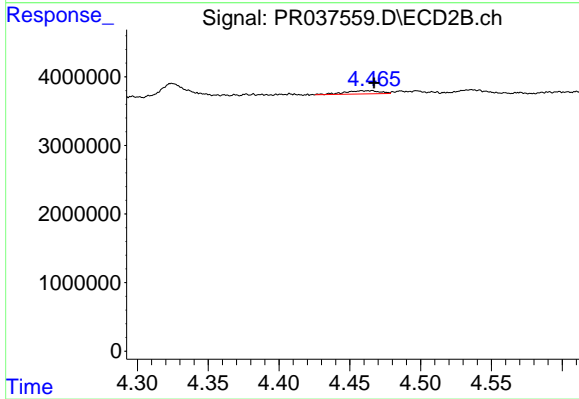
#11 AR-1232-1

R.T.: 3.793 min
 Delta R.T.: 0.026 min
 Response: 159573
 Conc: 1.36 ng/ml



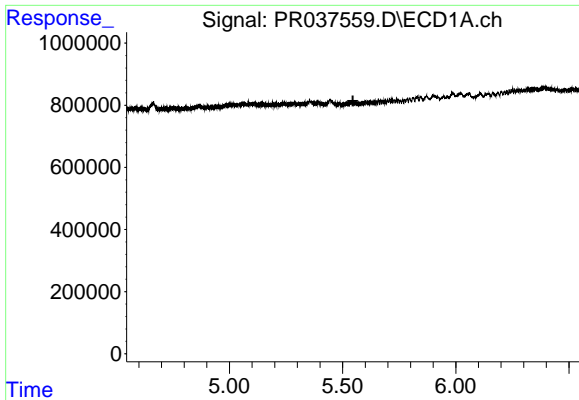
#12 AR-1232-2

R.T.: 0.000 min
 Exp R.T. : 5.258 min
 Response: 0
 Conc: N.D.



#12 AR-1232-2

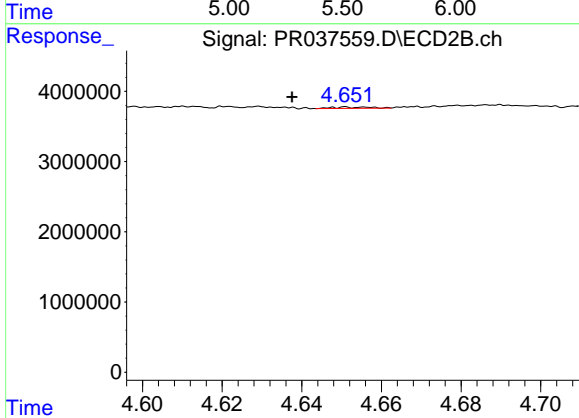
R.T.: 4.466 min
 Delta R.T.: -0.001 min
 Response: 810575
 Conc: 5.86 ng/ml



#13 AR-1232-3

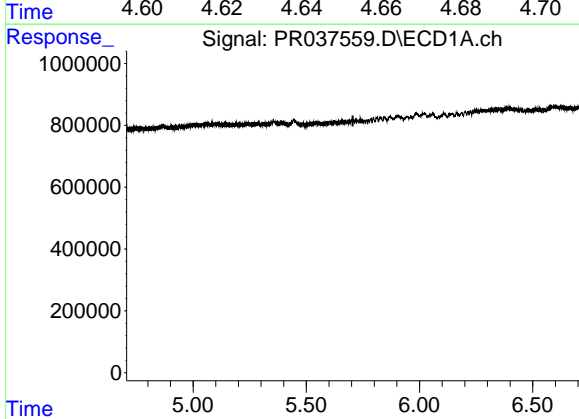
R.T.: 0.000 min
 Exp R.T.: 5.545 min
 Response: 0
 Conc: N.D.

Instrument :
 ECD_R
ClientSampled :
 PB119287BL



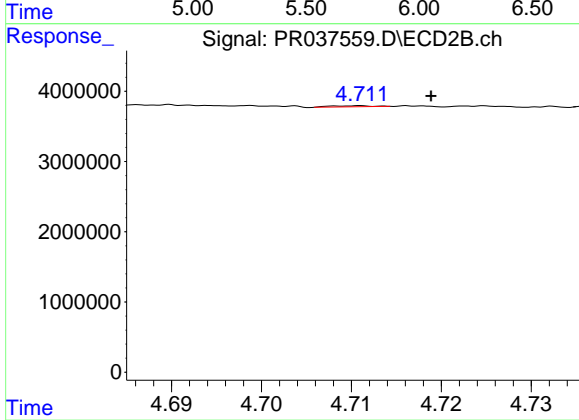
#13 AR-1232-3

R.T.: 4.651 min
 Delta R.T.: 0.014 min
 Response: 122556
 Conc: 1.75 ng/ml



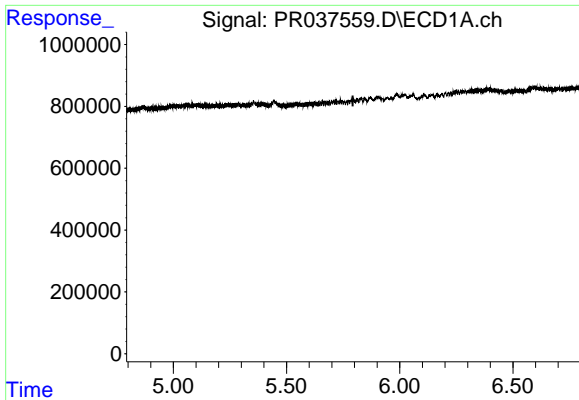
#14 AR-1232-4

R.T.: 0.000 min
 Exp R.T.: 5.706 min
 Response: 0
 Conc: N.D.



#14 AR-1232-4

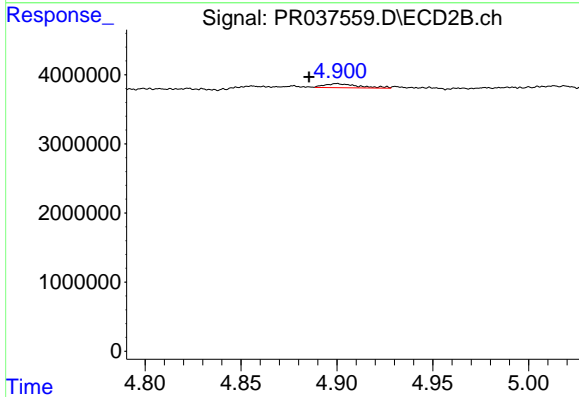
R.T.: 4.711 min
 Delta R.T.: -0.008 min
 Response: 44785
 Conc: 0.75 ng/ml



#15 AR-1232-5

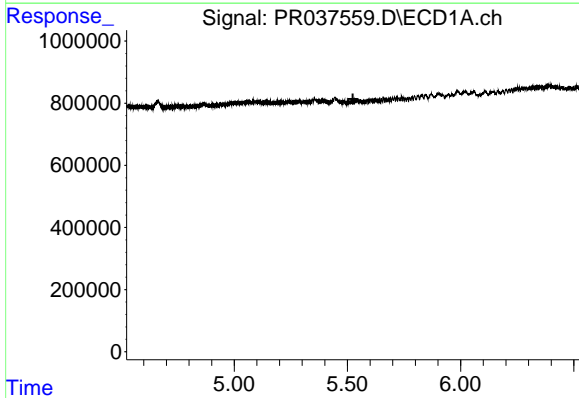
R.T.: 0.000 min
 Exp R.T. : 5.793 min
 Response: 0
 Conc: N.D.

Instrument :
 ECD_R
 ClientSampleId :
 PB119287BL



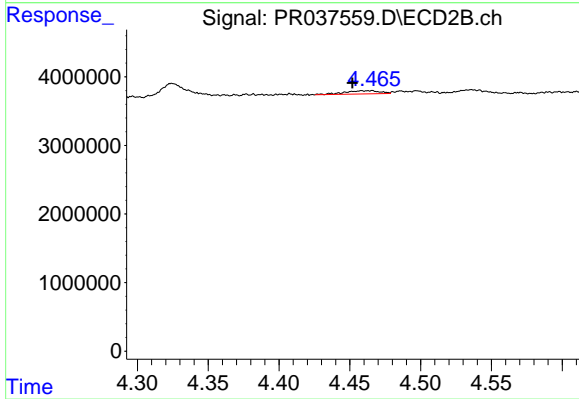
#15 AR-1232-5

R.T.: 4.900 min
 Delta R.T.: 0.015 min
 Response: 704057
 Conc: 10.32 ng/ml



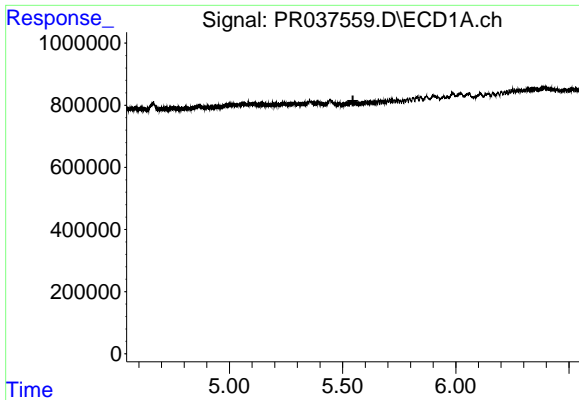
#16 AR-1242-1

R.T.: 0.000 min
 Exp R.T. : 5.524 min
 Response: 0
 Conc: N.D.



#16 AR-1242-1

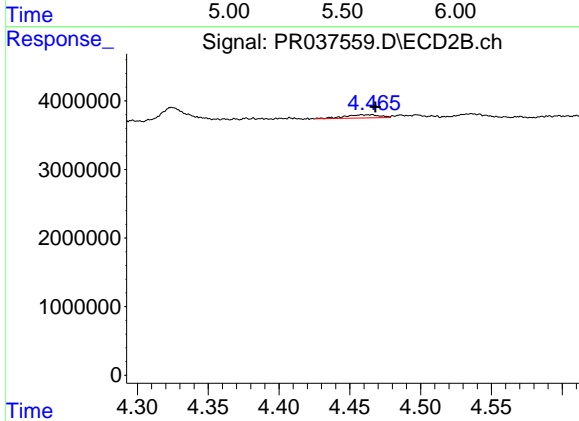
R.T.: 4.466 min
 Delta R.T.: 0.014 min
 Response: 810575
 Conc: 5.53 ng/ml



#17 AR-1242-2

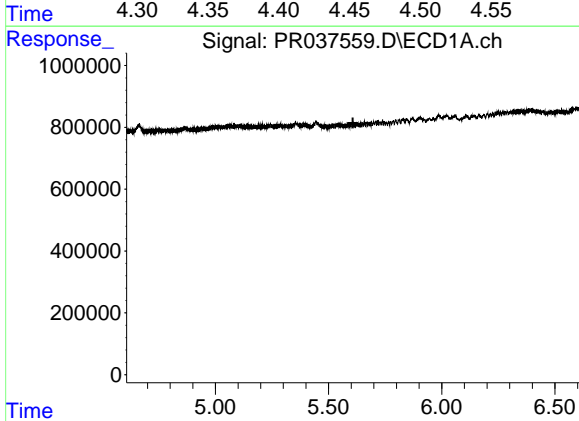
R.T.: 0.000 min
 Exp R.T.: 5.545 min
 Response: 0
 Conc: N.D.

Instrument :
 ECD_R
 ClientSampleId :
 PB119287BL



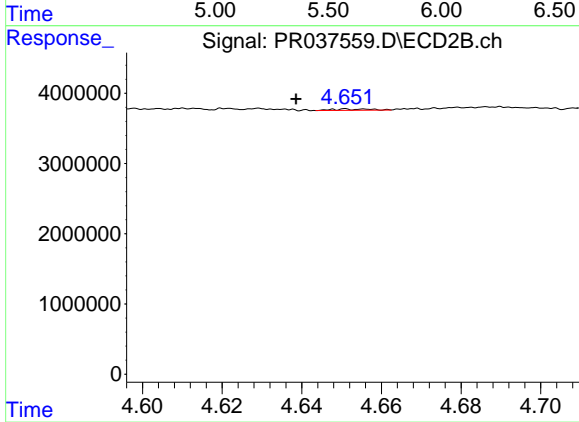
#17 AR-1242-2

R.T.: 4.466 min
 Delta R.T.: -0.002 min
 Response: 810575
 Conc: 3.55 ng/ml



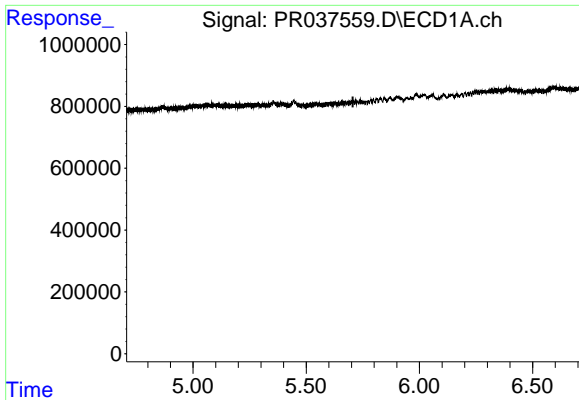
#18 AR-1242-3

R.T.: 0.000 min
 Exp R.T.: 5.608 min
 Response: 0
 Conc: N.D.



#18 AR-1242-3

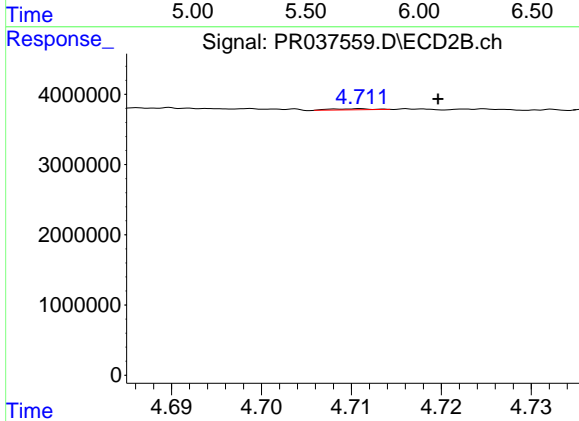
R.T.: 4.651 min
 Delta R.T.: 0.013 min
 Response: 122556
 Conc: 1.06 ng/ml



#19 AR-1242-4

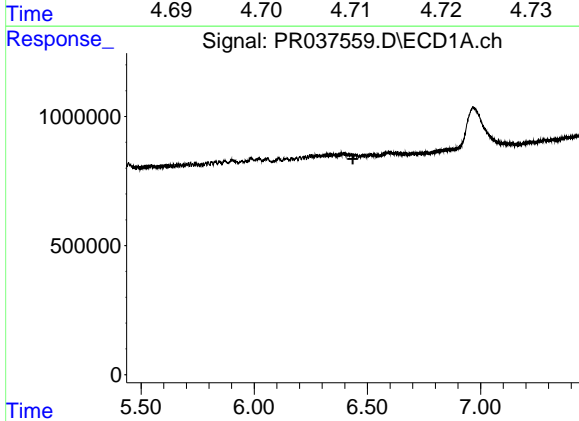
R.T.: 0.000 min
 Exp R.T.: 5.706 min
 Response: 0
 Conc: N.D.

Instrument :
 ECD_R
ClientSampled :
 PB119287BL



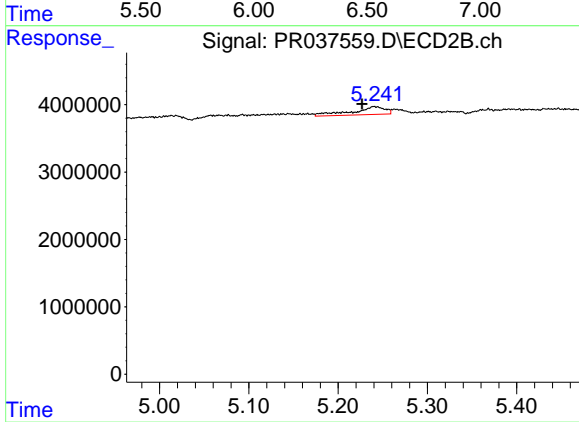
#19 AR-1242-4

R.T.: 4.711 min
 Delta R.T.: -0.009 min
 Response: 44785
 Conc: 0.41 ng/ml



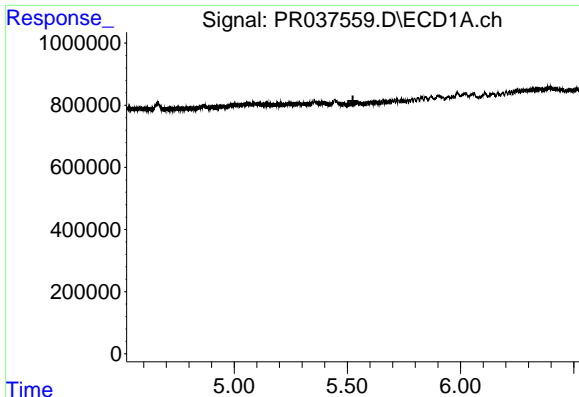
#20 AR-1242-5

R.T.: 0.000 min
 Exp R.T.: 6.436 min
 Response: 0
 Conc: N.D.



#20 AR-1242-5

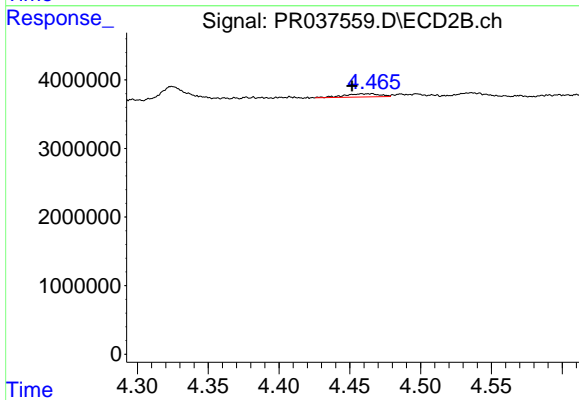
R.T.: 5.240 min
 Delta R.T.: 0.013 min
 Response: 2973890
 Conc: 17.95 ng/ml



#21 AR-1248-1

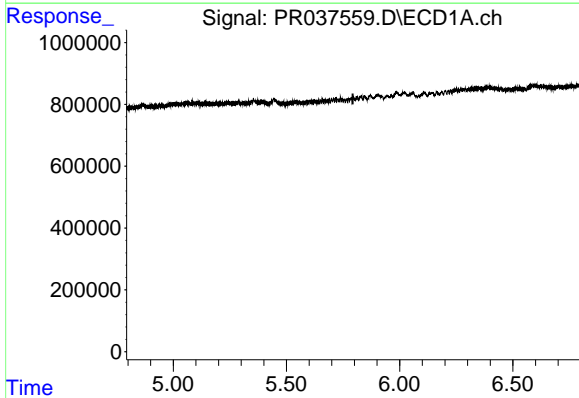
R.T.: 0.000 min
 Exp R.T. : 5.525 min
 Response: 0
 Conc: N.D.

Instrument :
 ECD_R
 ClientSampleId :
 PB119287BL



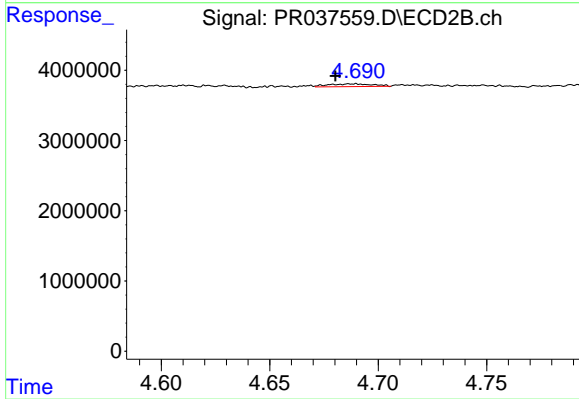
#21 AR-1248-1

R.T.: 4.466 min
 Delta R.T.: 0.014 min
 Response: 810575
 Conc: 8.05 ng/ml



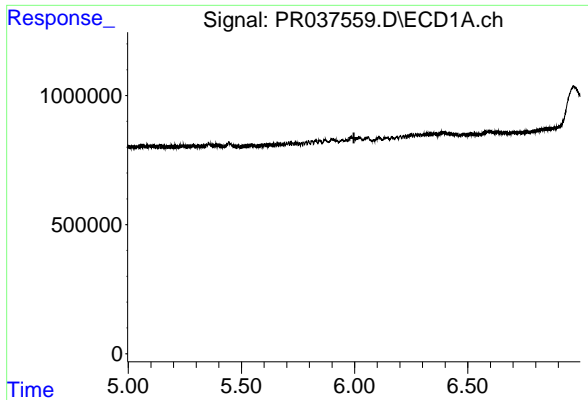
#22 AR-1248-2

R.T.: 0.000 min
 Exp R.T. : 5.793 min
 Response: 0
 Conc: N.D.



#22 AR-1248-2

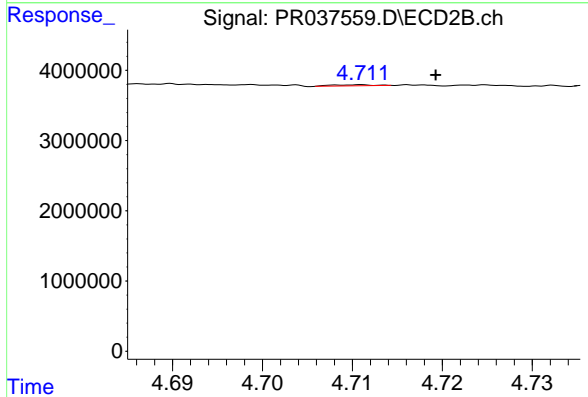
R.T.: 4.690 min
 Delta R.T.: 0.010 min
 Response: 578993
 Conc: 4.24 ng/ml



#23 AR-1248-3

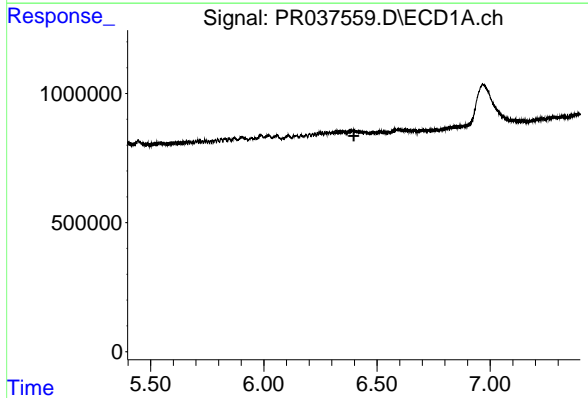
R.T.: 0.000 min
 Exp R.T.: 5.997 min
 Response: 0
 Conc: N.D.

Instrument :
 ECD_R
 ClientSampleId :
 PB119287BL



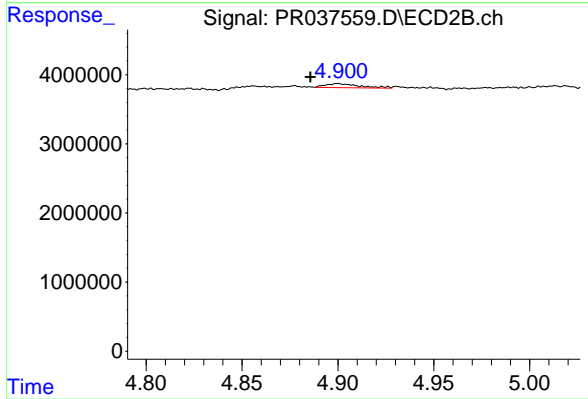
#23 AR-1248-3

R.T.: 4.711 min
 Delta R.T.: -0.008 min
 Response: 44785
 Conc: 0.32 ng/ml



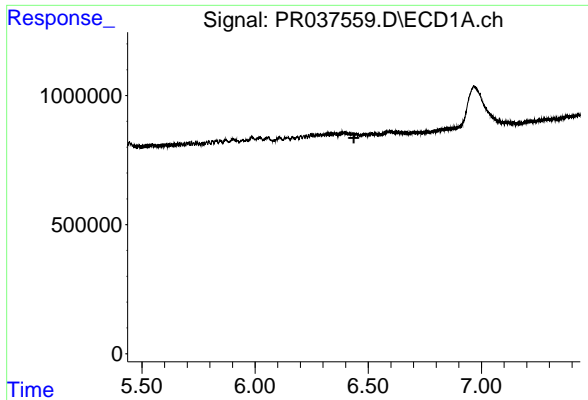
#24 AR-1248-4

R.T.: 0.000 min
 Exp R.T.: 6.398 min
 Response: 0
 Conc: N.D.



#24 AR-1248-4

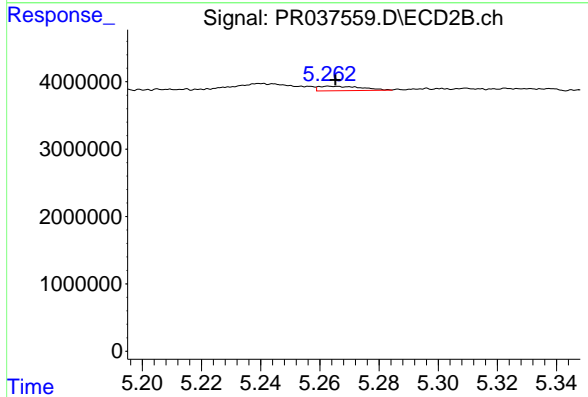
R.T.: 4.900 min
 Delta R.T.: 0.014 min
 Response: 704057
 Conc: 3.96 ng/ml



#25 AR-1248-5

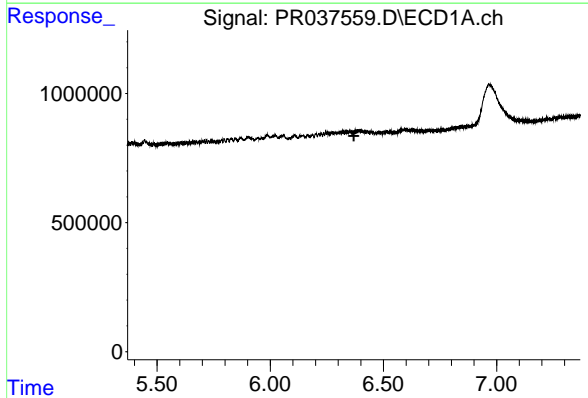
R.T.: 0.000 min
 Exp R.T. : 6.436 min
 Response: 0
 Conc: N.D.

Instrument :
 ECD_R
 ClientSampleId :
 PB119287BL



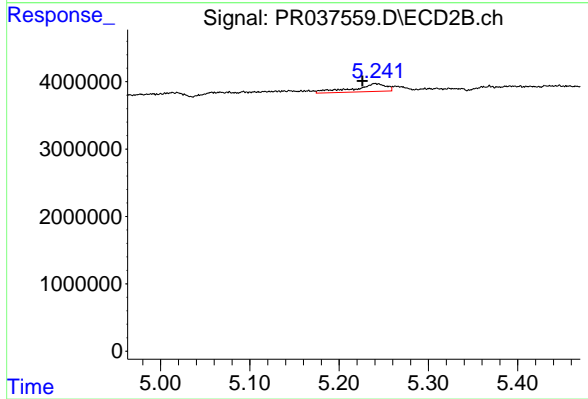
#25 AR-1248-5

R.T.: 5.263 min
 Delta R.T.: -0.002 min
 Response: 666421
 Conc: 3.41 ng/ml



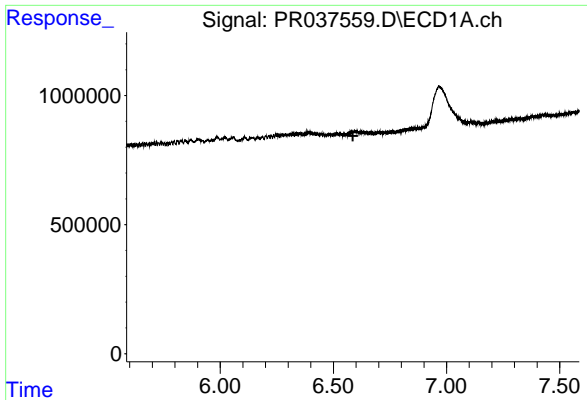
#26 AR-1254-1

R.T.: 0.000 min
 Exp R.T. : 6.369 min
 Response: 0
 Conc: N.D.



#26 AR-1254-1

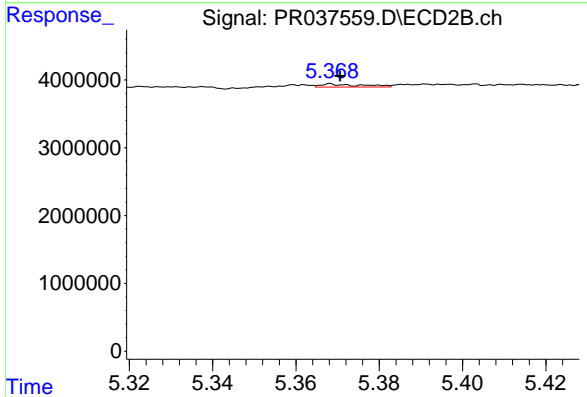
R.T.: 5.240 min
 Delta R.T.: 0.014 min
 Response: 2973890
 Conc: 8.63 ng/ml



#27 AR-1254-2

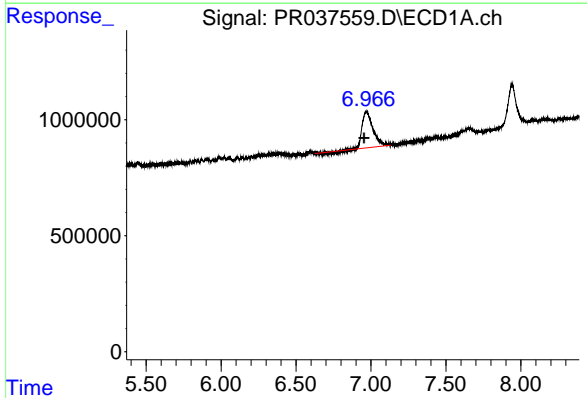
R.T.: 0.000 min
 Exp R.T.: 6.586 min
 Response: 0
 Conc: N.D.

Instrument :
 ECD_R
 ClientSampleId :
 PB119287BL



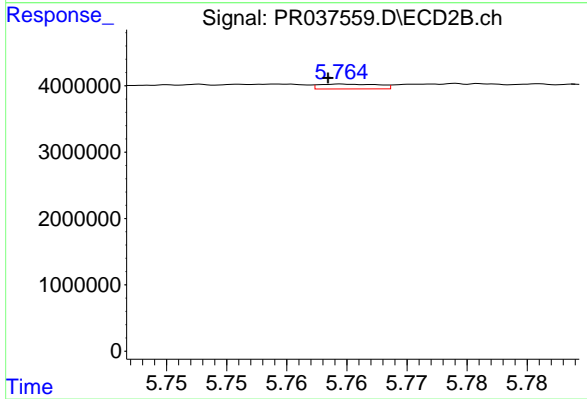
#27 AR-1254-2

R.T.: 5.368 min
 Delta R.T.: -0.002 min
 Response: 314968
 Conc: 1.05 ng/ml



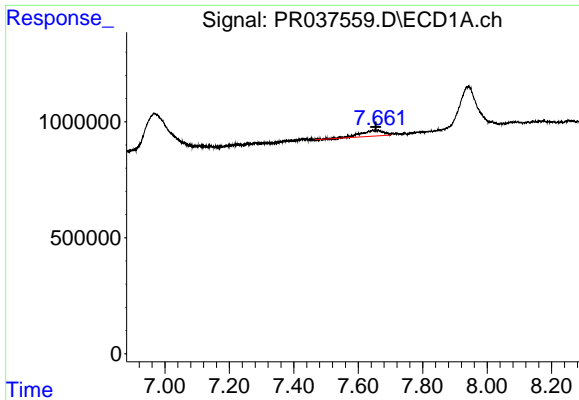
#28 AR-1254-3

R.T.: 6.966 min
 Delta R.T.: 0.013 min
 Response: 7666333
 Conc: 84.28 ng/ml



#28 AR-1254-3

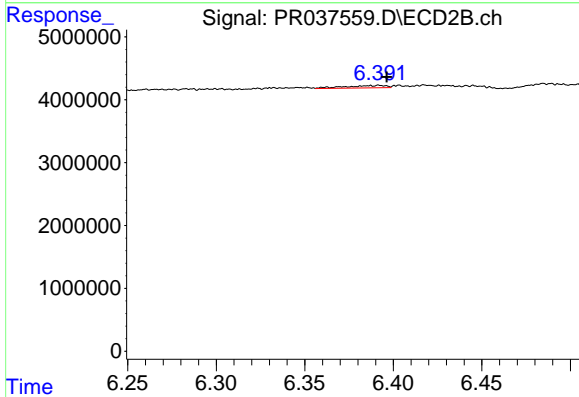
R.T.: 5.765 min
 Delta R.T.: 0.001 min
 Response: 252140
 Conc: 0.53 ng/ml



#30 AR-1254-5

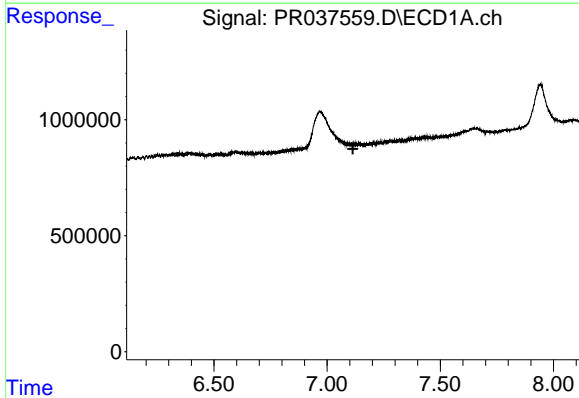
R.T.: 7.662 min
 Delta R.T.: 0.008 min
 Response: 1201155
 Conc: 16.71 ng/ml

Instrument :
 ECD_R
ClientSampleId :
 PB119287BL



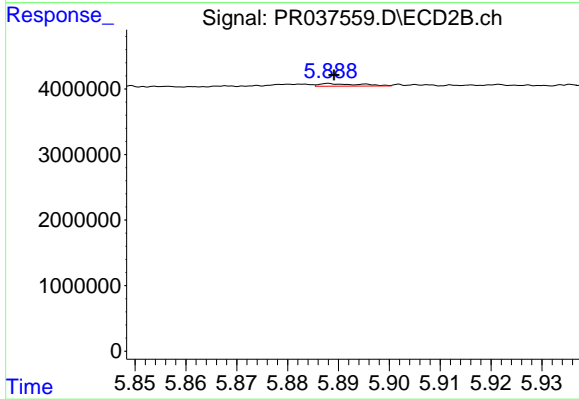
#30 AR-1254-5

R.T.: 6.392 min
 Delta R.T.: -0.004 min
 Response: 618161
 Conc: 1.40 ng/ml



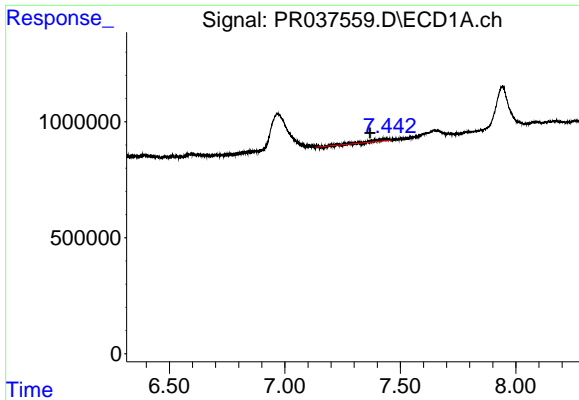
#31 AR-1260-1

R.T.: 0.000 min
 Exp R.T. : 7.114 min
 Response: 0
 Conc: N.D.



#31 AR-1260-1

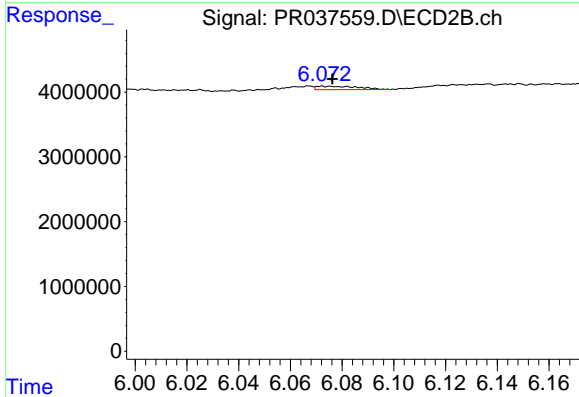
R.T.: 5.888 min
 Delta R.T.: 0.000 min
 Response: 215747
 Conc: 0.74 ng/ml



#32 AR-1260-2

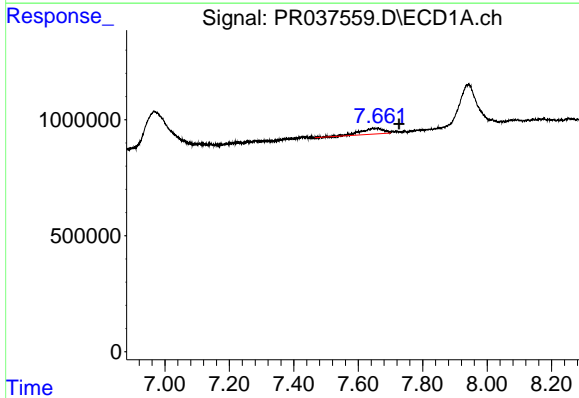
R.T.: 7.431 min
 Delta R.T.: 0.061 min
 Response: 475921
 Conc: 5.97 ng/ml

Instrument :
 ECD_R
 ClientSampled :
 PB119287BL



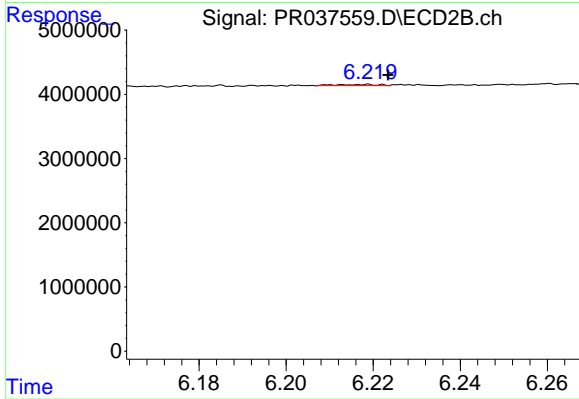
#32 AR-1260-2

R.T.: 6.072 min
 Delta R.T.: -0.004 min
 Response: 585436
 Conc: 1.27 ng/ml



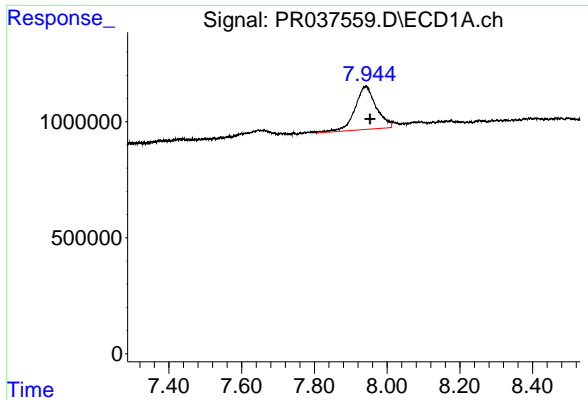
#33 AR-1260-3

R.T.: 7.662 min
 Delta R.T.: -0.064 min
 Response: 1201155
 Conc: 19.20 ng/ml



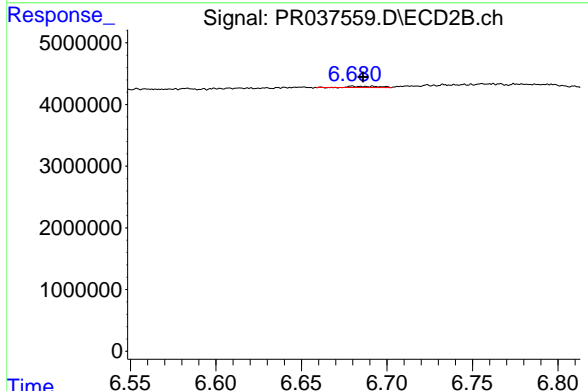
#33 AR-1260-3

R.T.: 6.219 min
 Delta R.T.: -0.005 min
 Response: 129311
 Conc: 0.36 ng/ml

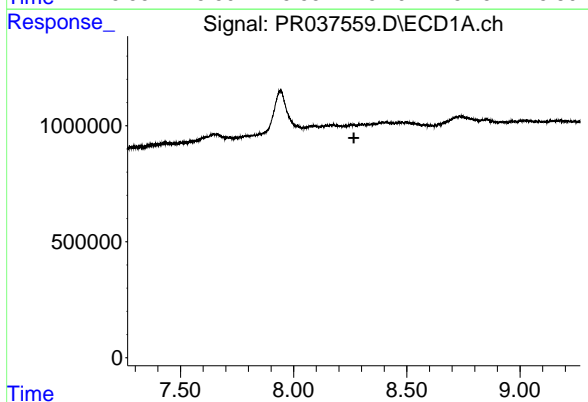


#34 AR-1260-4
 R.T.: 7.943 min
 Delta R.T.: -0.010 min
 Response: 7592835
 Conc: 102.05 ng/ml

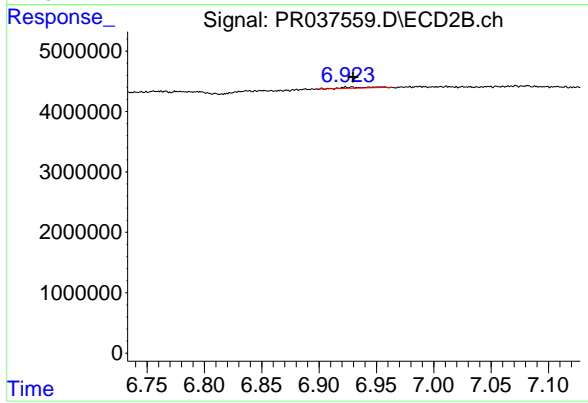
Instrument :
 ECD_R
 ClientSampled :
 PB119287BL



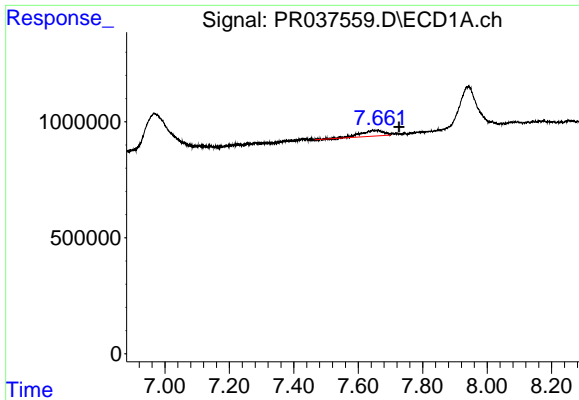
#34 AR-1260-4
 R.T.: 6.680 min
 Delta R.T.: -0.006 min
 Response: 213342
 Conc: 0.70 ng/ml



#35 AR-1260-5
 R.T.: 0.000 min
 Exp R.T. : 8.266 min
 Response: 0
 Conc: N.D.



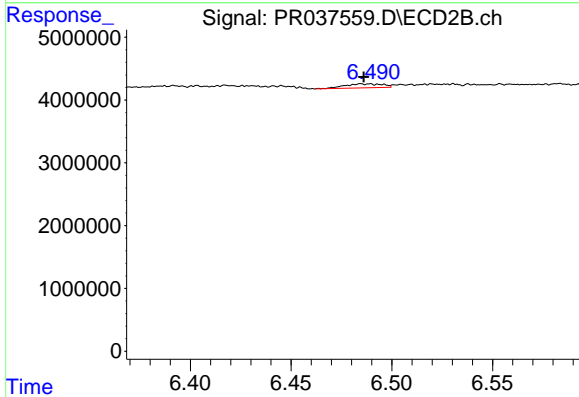
#35 AR-1260-5
 R.T.: 6.929 min
 Delta R.T.: -0.001 min
 Response: 301347
 Conc: 0.35 ng/ml



#36 AR-1262-1

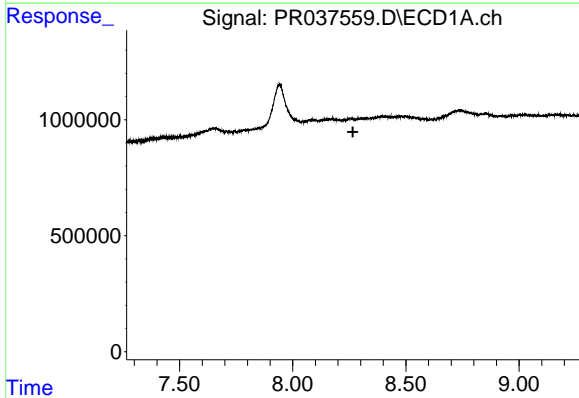
R.T.: 7.662 min
 Delta R.T.: -0.064 min
 Response: 1201155
 Conc: 11.50 ng/ml

Instrument :
 ECD_R
ClientSampled :
 PB119287BL



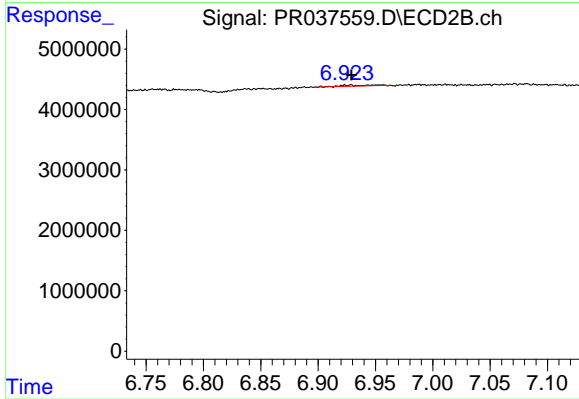
#36 AR-1262-1

R.T.: 6.485 min
 Delta R.T.: -0.001 min
 Response: 823707
 Conc: 3.29 ng/ml



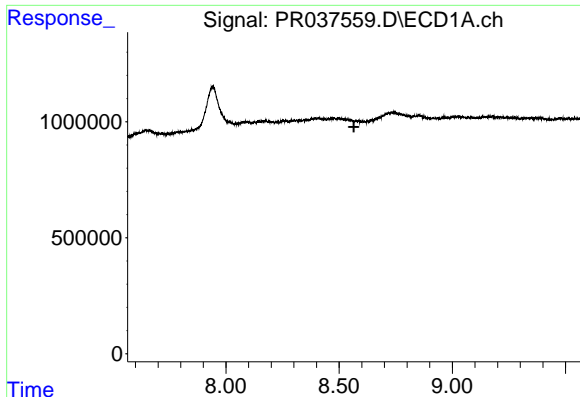
#37 AR-1262-2

R.T.: 0.000 min
 Exp R.T. : 8.266 min
 Response: 0
 Conc: N.D.



#37 AR-1262-2

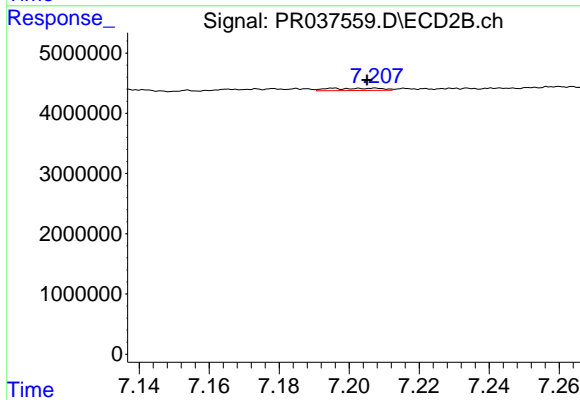
R.T.: 6.929 min
 Delta R.T.: 0.000 min
 Response: 301347
 Conc: 0.24 ng/ml



#38 AR-1262-3

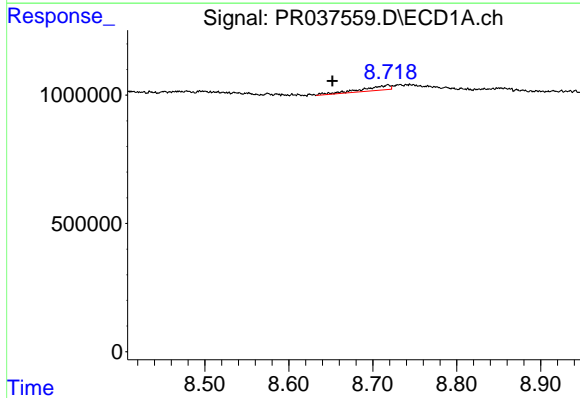
R.T.: 0.000 min
 Exp R.T. : 8.565 min
 Response: 0
 Conc: N.D.

Instrument :
 ECD_R
 ClientSampleId :
 PB119287BL



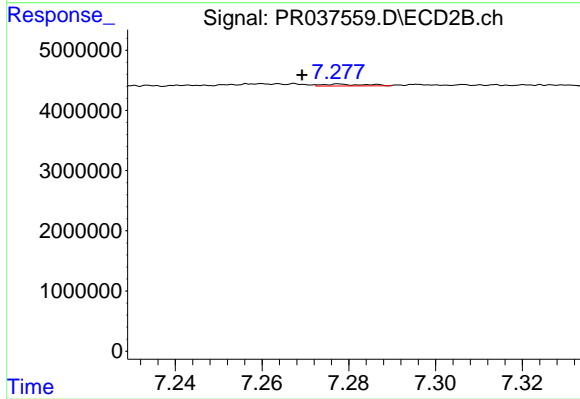
#38 AR-1262-3

R.T.: 7.207 min
 Delta R.T.: 0.002 min
 Response: 383529
 Conc: 0.70 ng/ml



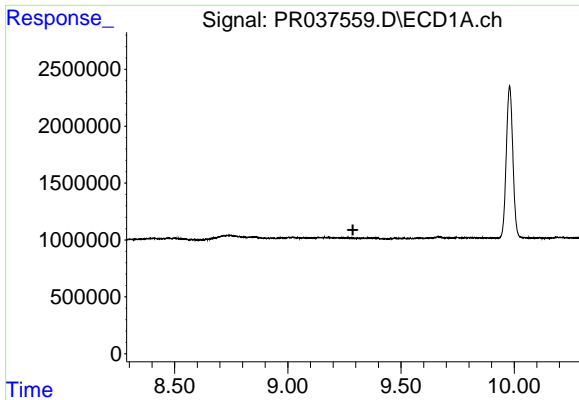
#39 AR-1262-4

R.T.: 8.718 min
 Delta R.T.: 0.066 min
 Response: 433892
 Conc: 4.42 ng/ml



#39 AR-1262-4

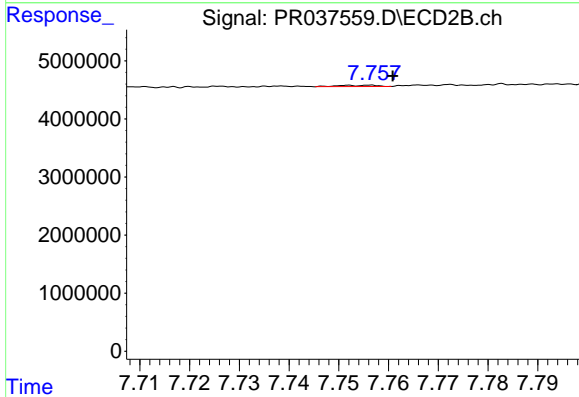
R.T.: 7.278 min
 Delta R.T.: 0.009 min
 Response: 211146
 Conc: 0.24 ng/ml



#40 AR-1262-5

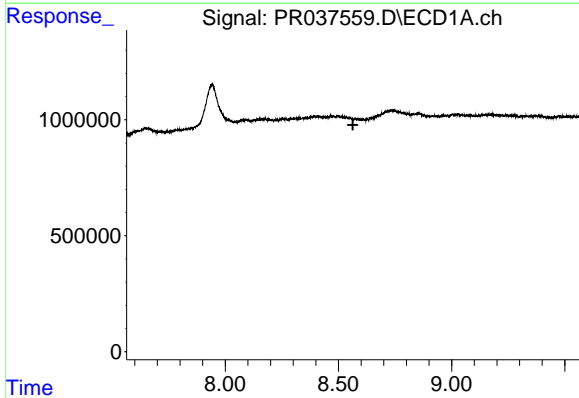
R.T.: 0.000 min
 Exp R.T.: 9.287 min
 Response: 0
 Conc: N.D.

Instrument :
 ECD_R
ClientSampleId :
 PB119287BL



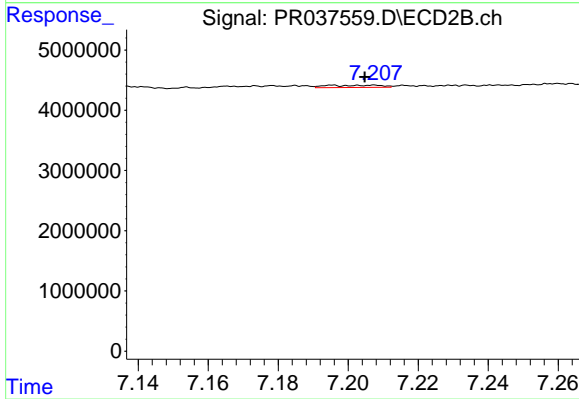
#40 AR-1262-5

R.T.: 7.756 min
 Delta R.T.: -0.005 min
 Response: 110371
 Conc: 0.29 ng/ml



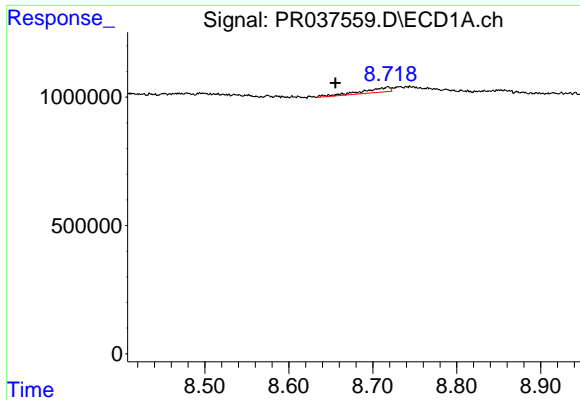
#41 AR-1268-1

R.T.: 0.000 min
 Exp R.T.: 8.564 min
 Response: 0
 Conc: N.D.



#41 AR-1268-1

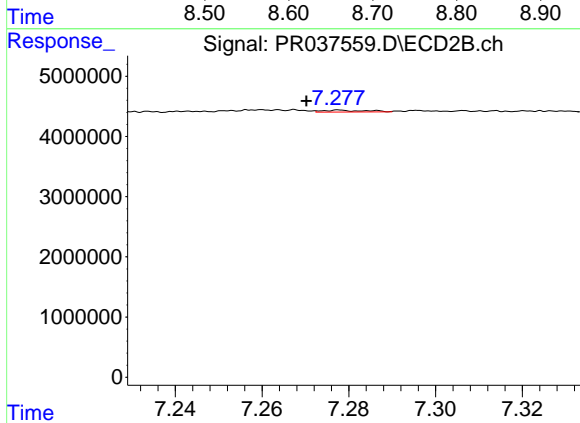
R.T.: 7.207 min
 Delta R.T.: 0.003 min
 Response: 383529
 Conc: 0.31 ng/ml



#42 AR-1268-2

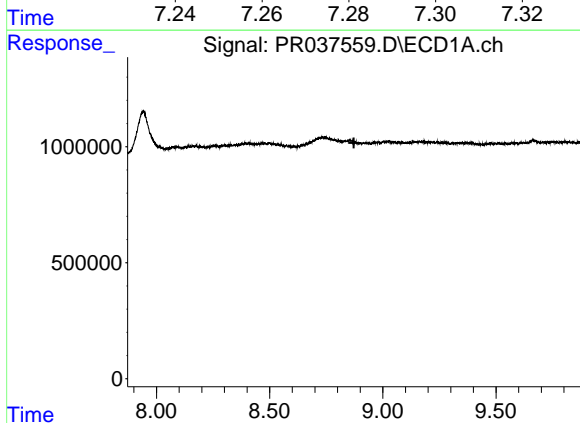
R.T.: 8.718 min
 Delta R.T.: 0.063 min
 Response: 433892
 Conc: 2.64 ng/ml

Instrument :
 ECD_R
 ClientSampleId :
 PB119287BL



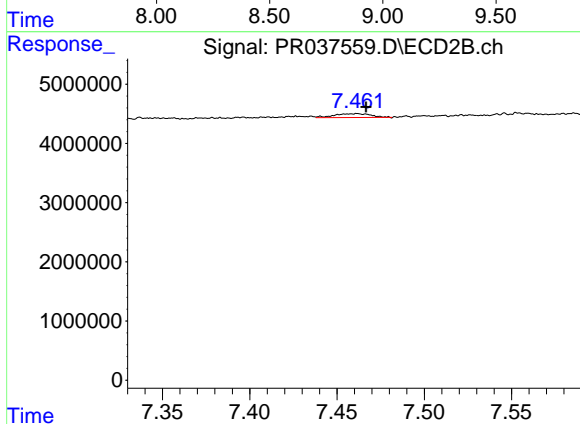
#42 AR-1268-2

R.T.: 7.278 min
 Delta R.T.: 0.007 min
 Response: 211146
 Conc: 0.20 ng/ml



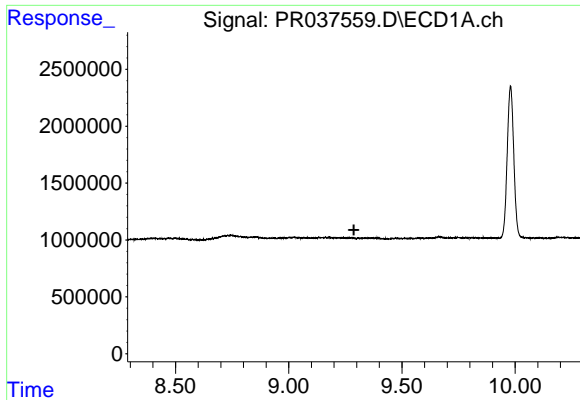
#43 AR-1268-3

R.T.: 0.000 min
 Exp R.T. : 8.872 min
 Response: 0
 Conc: N.D.



#43 AR-1268-3

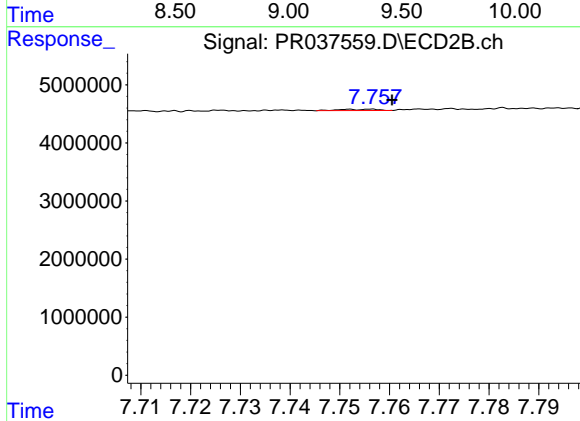
R.T.: 7.461 min
 Delta R.T.: -0.005 min
 Response: 956085
 Conc: 1.08 ng/ml



#44 AR-1268-4

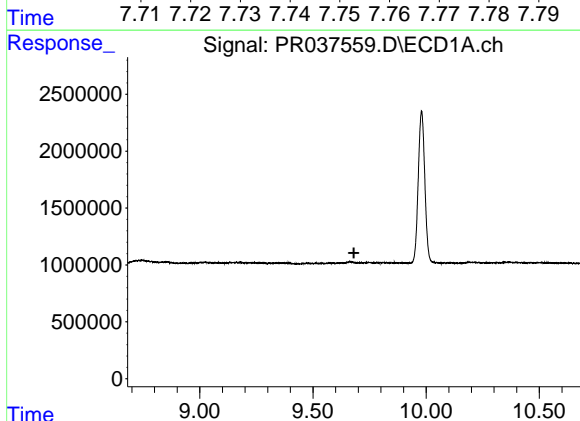
R.T.: 0.000 min
 Exp R.T.: 9.288 min
 Response: 0
 Conc: N.D.

Instrument :
 ECD_R
 ClientSampleId :
 PB119287BL



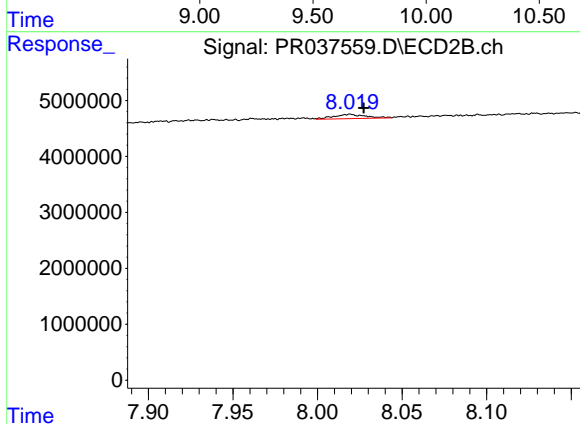
#44 AR-1268-4

R.T.: 7.756 min
 Delta R.T.: -0.004 min
 Response: 110371
 Conc: 0.30 ng/ml



#45 AR-1268-5

R.T.: 0.000 min
 Exp R.T.: 9.681 min
 Response: 0
 Conc: N.D.



#45 AR-1268-5

R.T.: 8.019 min
 Delta R.T.: -0.008 min
 Response: 1024740
 Conc: 0.40 ng/ml