

Data Path : Z:\pestpcbsrv\HPCHEM1\ECD_R\Data\PR050219\
 Data File : PR037563.D
 Signal(s) : Signal #1: ECD1A.ch Signal #2: ECD2B.ch
 Acq On : 02 May 2019 17:15
 Operator : SM\SJ
 Sample : PB119285BSD
 Misc :
 ALS Vial : 14 Sample Multiplier: 1

Instrument :
 ECD_R
 ClientSampleId :
 PB119285BSD

Integration File signal 1: autoint1.e
 Integration File signal 2: autoint2.e
 Quant Time: May 03 01:05:59 2019
 Quant Method : Z:\pestpcbsrv\HPCHEM1\ECD_R\Method\PR042219.M
 Quant Title : GC EXTRACTABLES
 QLast Update : Mon Apr 22 17:27:39 2019
 Response via : Initial Calibration
 Integrator: ChemStation

Volume Inj. : 2 µl
 Signal #1 Phase : ZB-MR1 Signal #2 Phase: ZB-MR2
 Signal #1 Info : 30Mx0.32mmx 0.50µ Signal #2 Info : 30M x 0.32mm x 0.25µm

Compound	RT#1	RT#2	Resp#1	Resp#2	ng/ml	ng/ml

System Monitoring Compounds						
1) SA Tetrachlo...	4.357	3.403	33882096	128.2E6	27.084	26.725
2) SA Decachlor...	9.979	8.238	27175654	118.2E6	20.547	20.295
Target Compounds						
3) L1 AR-1016-1	5.517	4.447	11243965	47991110	260.949	263.571
4) L1 AR-1016-2	5.539	4.463	18598585	75301358	268.582	266.910
5) L1 AR-1016-3	5.600	4.633	11121907	36799061	275.785	255.934
6) L1 AR-1016-4	5.699	4.675	8052476	28734088	245.204	259.720
7) L1 AR-1016-5	5.989	4.881	8725162	37934978	254.453	249.557
8) L2 AR-1221-1	4.560	3.607	1102304	4481717	88.162	88.017
9) L2 AR-1221-2	4.653	3.691	1588984	7146658	175.696	192.447
10) L2 AR-1221-3	4.728	3.763	6656308	23730541	217.178	193.801
11) L3 AR-1232-1	4.728	3.763	6656308	23730541	227.558	202.840
12) L3 AR-1232-2	5.252	4.463	9256270	75301358	547.789	544.775
13) L3 AR-1232-3	5.539	4.633	18598585	36799061	550.180	524.190
14) L3 AR-1232-4	5.699	4.715	8052476	35739177	513.004	598.929
15) L3 AR-1232-5	5.786	4.881	8144846	37934978	696.400	555.875
16) L4 AR-1242-1	5.517	4.447	11243965	47991110	328.631	327.500
17) L4 AR-1242-2	5.539	4.463	18598585	75301358	335.292	330.037
18) L4 AR-1242-3	5.600	4.633	11121907	36799061	337.898	318.249
19) L4 AR-1242-4	5.699	4.715	8052476	35739177	305.279	325.167
20) L4 AR-1242-5	6.428	5.221	1617203	33909284	50.257	204.643 #
21) L5 AR-1248-1	5.517	4.447	11243965	47991110	490.845	476.746
22) L5 AR-1248-2	5.786	4.675	8144846	28734088	232.614	210.546
23) L5 AR-1248-3	5.989	4.715	8725162	35739177	213.280	255.329
24) L5 AR-1248-4	6.428	4.881	1617203	37934978	33.035	213.160 #
25) L5 AR-1248-5	6.428	5.261	1617203	6019100	34.236	30.771
26) L6 AR-1254-1	6.362	5.221	9143276	33909284	167.365	98.438 #
27) L6 AR-1254-2	6.577	5.366	8351619	33841624	97.455	112.993
28) L6 AR-1254-3	6.943	5.771	4565605	62480035	50.191	131.920 #
29) L6 AR-1254-4	7.225	5.983	3369984	7706461	50.292	21.978 #
30) L6 AR-1254-5	7.642	6.390	26052916	128.1E6	362.446	289.308
31) L7 AR-1260-1	7.103	5.884	18859023	82830709	285.802	283.398
32) L7 AR-1260-2	7.358	6.070	21487199	122.4E6	269.588	265.732
33) L7 AR-1260-3	7.714	6.218	13658113	98531626	218.266	276.387 #
34) L7 AR-1260-4	7.940	6.680	16540051	70397996	222.300	230.992
35) L7 AR-1260-5	8.253	6.923	30338664	195.8E6	209.780	225.813
36) L8 AR-1262-1	7.714	6.479	13658113	46224655	130.759	184.441 #
37) L8 AR-1262-2	8.253	6.923	30338664	195.8E6	156.075	155.926
38) L8 AR-1262-3	8.571	7.198	19047723	38053351	144.838	69.407 #
39) L8 AR-1262-4	8.622	7.261	10100971	128.9E6	102.831	143.546 #
40) L8 AR-1262-5	9.273	7.753	6863540	32839228	99.413	85.827
41) L9 AR-1268-1	8.571	7.198	19047723	38053351	106.357	30.912 #

Data Path : Z:\pestpcbsrv\HPCHEM1\ECD_R\Data\PR050219\
 Data File : PR037563.D
 Signal(s) : Signal #1: ECD1A.ch Signal #2: ECD2B.ch
 Acq On : 02 May 2019 17:15
 Operator : SM\SJ
 Sample : PB119285BSD
 Misc :
 ALS Vial : 14 Sample Multiplier: 1

Instrument :
 ECD_R
 ClientSampleId :
 PB119285BSD

Integration File signal 1: autoint1.e
 Integration File signal 2: autoint2.e
 Quant Time: May 03 01:05:59 2019
 Quant Method : Z:\pestpcbsrv\HPCHEM1\ECD_R\Method\PR042219.M
 Quant Title : GC EXTRACTABLES
 QLast Update : Mon Apr 22 17:27:39 2019
 Response via : Initial Calibration
 Integrator: ChemStation

Volume Inj. : 2 µl
 Signal #1 Phase : ZB-MR1 Signal #2 Phase: ZB-MR2
 Signal #1 Info : 30Mx0.32mmx 0.50µ Signal #2 Info : 30M x 0.32mm x 0.25µm

	Compound	RT#1	RT#2	Resp#1	Resp#2	ng/ml	ng/ml
42)	L9 AR-1268-2	8.622	7.261	10100971	128.9E6	61.405	121.684 #
43)	L9 AR-1268-3	8.858	7.459	796585	4111161	5.754	4.639
44)	L9 AR-1268-4	9.273	7.753	6863540	32839228	110.018	90.520
45)	L9 AR-1268-5	9.663	8.019	2543217	10246342	5.579	4.027 #

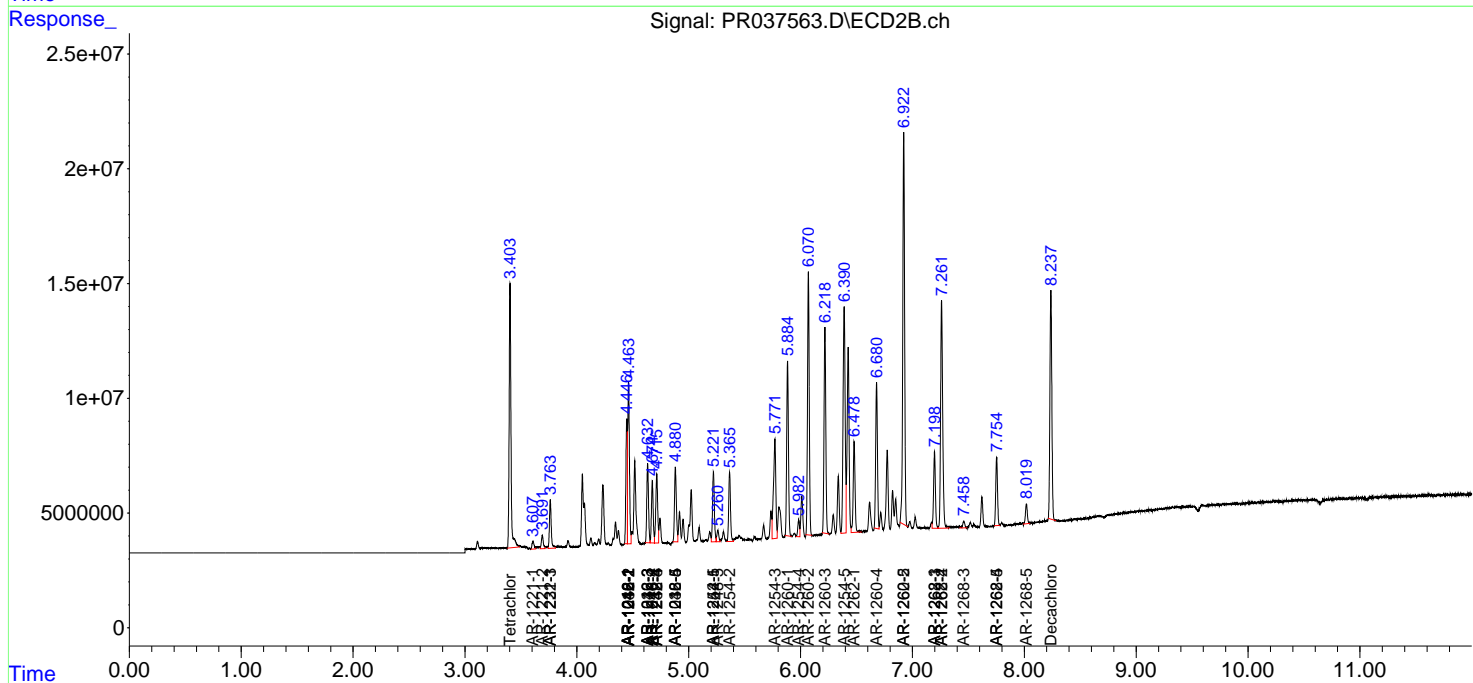
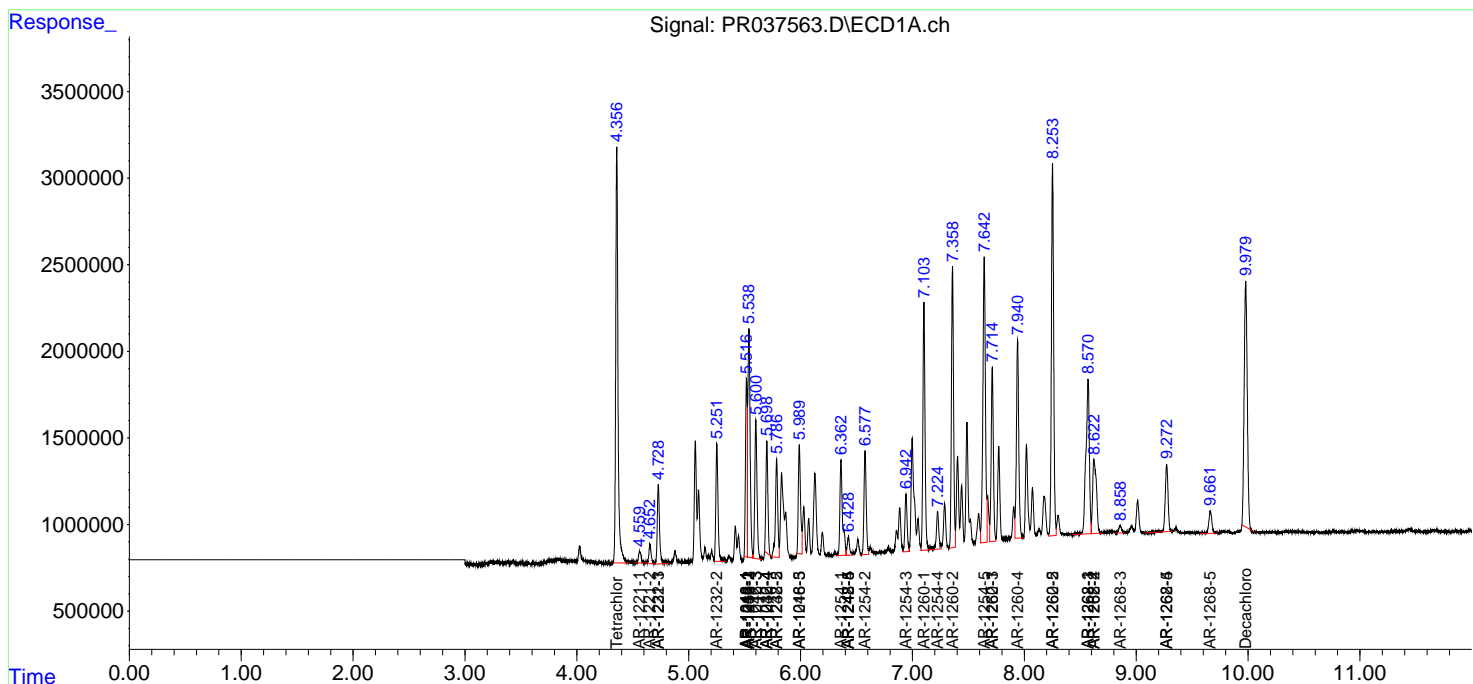
(f)=RT Delta > 1/2 Window (#)=Amounts differ by > 25% (m)=manual int.

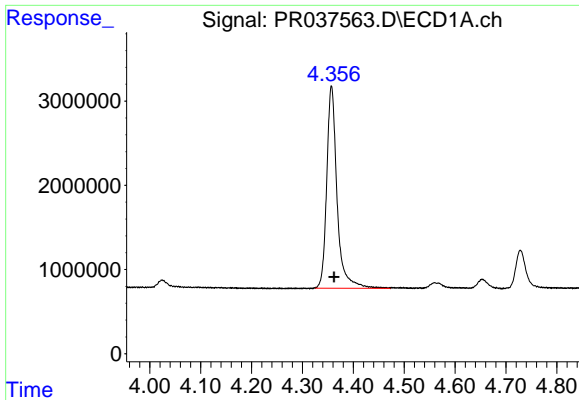
Data Path : Z:\pestpcbsrv\HPCHEM1\ECD_R\Data\PR050219\
 Data File : PR037563.D
 Signal(s) : Signal #1: ECD1A.ch Signal #2: ECD2B.ch
 Acq On : 02 May 2019 17:15
 Operator : SM\SJ
 Sample : PB119285BSD
 Misc :
 ALS Vial : 14 Sample Multiplier: 1

Instrument :
 ECD_R
 ClientSampled :
 PB119285BSD

Integration File signal 1: autoint1.e
 Integration File signal 2: autoint2.e
 Quant Time: May 03 01:05:59 2019
 Quant Method : Z:\pestpcbsrv\HPCHEM1\ECD_R\Method\PR042219.M
 Quant Title : GC EXTRACTABLES
 QLast Update : Mon Apr 22 17:27:39 2019
 Response via : Initial Calibration
 Integrator: ChemStation

Volume Inj. : 2 µl
 Signal #1 Phase : ZB-MR1 Signal #2 Phase: ZB-MR2
 Signal #1 Info : 30Mx0.32mmx 0.50µ Signal #2 Info : 30M x 0.32mm x 0.25µm

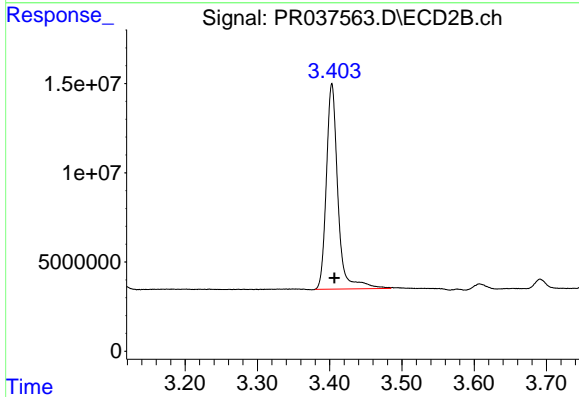




#1 Tetrachloro-m-xylene

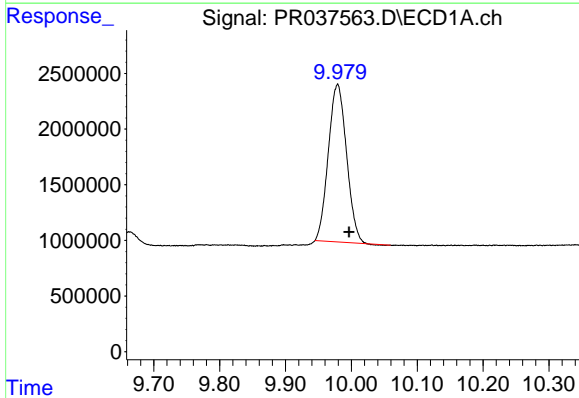
R.T.: 4.357 min
 Delta R.T.: -0.005 min
 Response: 33882096
 Conc: 27.08 ng/ml

Instrument :
 ECD_R
 ClientSampleId :
 PB119285BSD



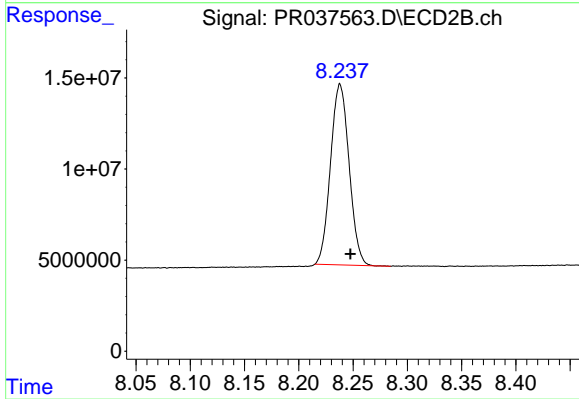
#1 Tetrachloro-m-xylene

R.T.: 3.403 min
 Delta R.T.: -0.003 min
 Response: 128161617
 Conc: 26.73 ng/ml



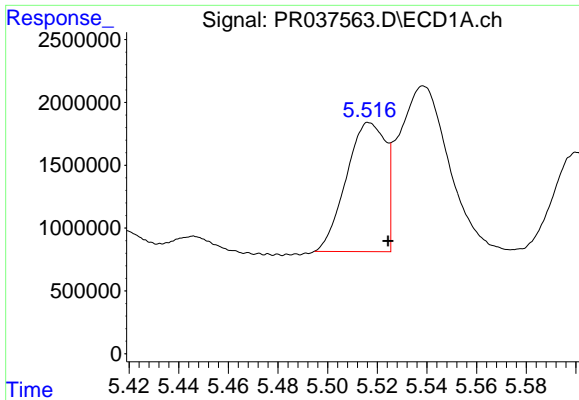
#2 Decachlorobiphenyl

R.T.: 9.979 min
 Delta R.T.: -0.018 min
 Response: 27175654
 Conc: 20.55 ng/ml



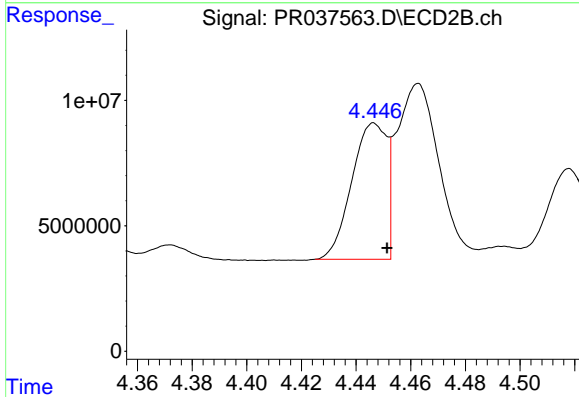
#2 Decachlorobiphenyl

R.T.: 8.238 min
 Delta R.T.: -0.009 min
 Response: 118200864
 Conc: 20.29 ng/ml

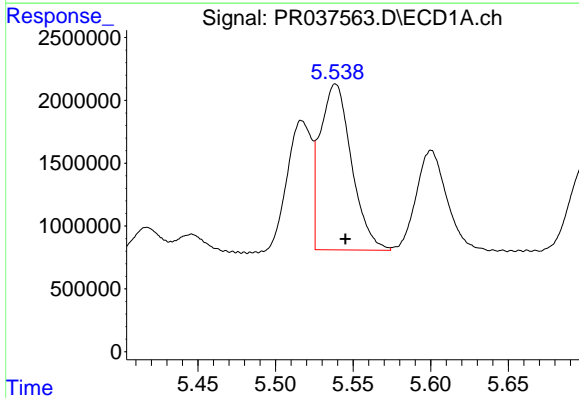


#3 AR-1016-1
 R.T.: 5.517 min
 Delta R.T.: -0.007 min
 Response: 11243965
 Conc: 260.95 ng/ml

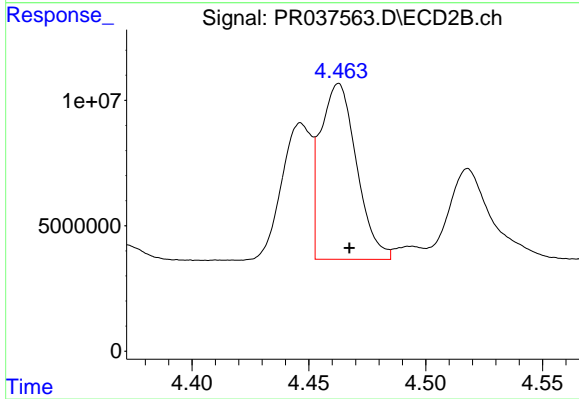
Instrument :
 ECD_R
ClientSampled :
 PB119285BSD



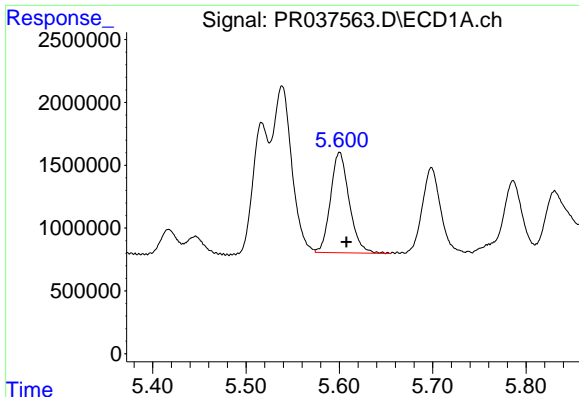
#3 AR-1016-1
 R.T.: 4.447 min
 Delta R.T.: -0.005 min
 Response: 47991110
 Conc: 263.57 ng/ml



#4 AR-1016-2
 R.T.: 5.539 min
 Delta R.T.: -0.006 min
 Response: 18598585
 Conc: 268.58 ng/ml



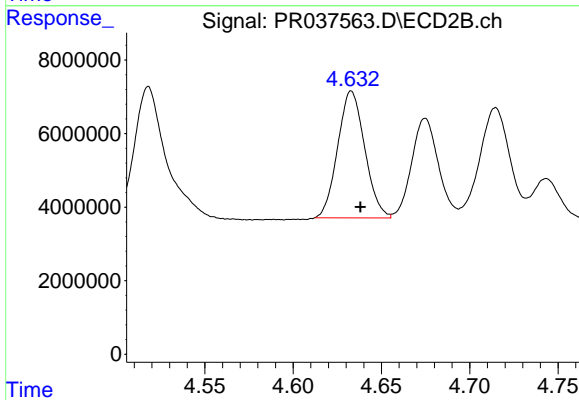
#4 AR-1016-2
 R.T.: 4.463 min
 Delta R.T.: -0.005 min
 Response: 75301358
 Conc: 266.91 ng/ml



#5 AR-1016-3

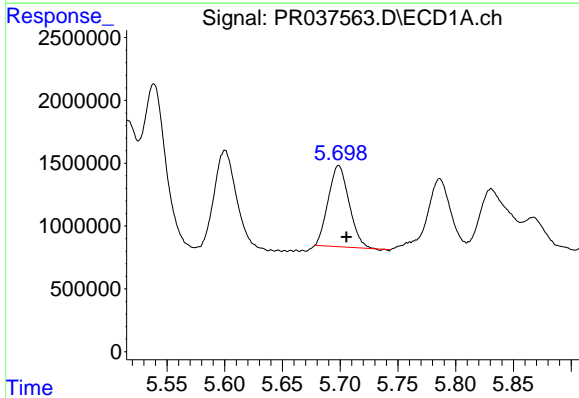
R.T.: 5.600 min
 Delta R.T.: -0.008 min
 Response: 11121907
 Conc: 275.78 ng/ml

Instrument :
 ECD_R
 ClientSampleId :
 PB119285BSD



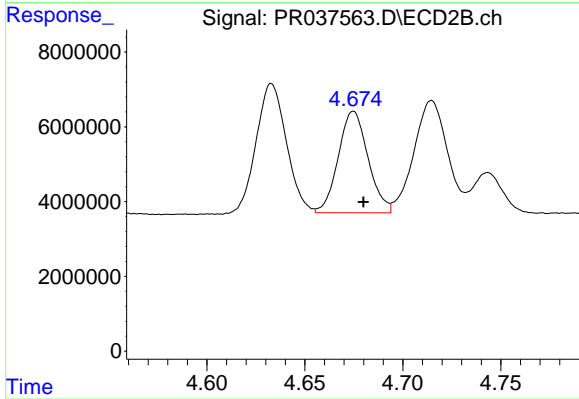
#5 AR-1016-3

R.T.: 4.633 min
 Delta R.T.: -0.005 min
 Response: 36799061
 Conc: 255.93 ng/ml



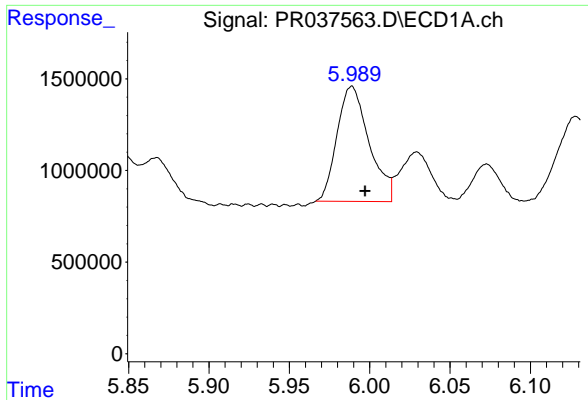
#6 AR-1016-4

R.T.: 5.699 min
 Delta R.T.: -0.007 min
 Response: 8052476
 Conc: 245.20 ng/ml



#6 AR-1016-4

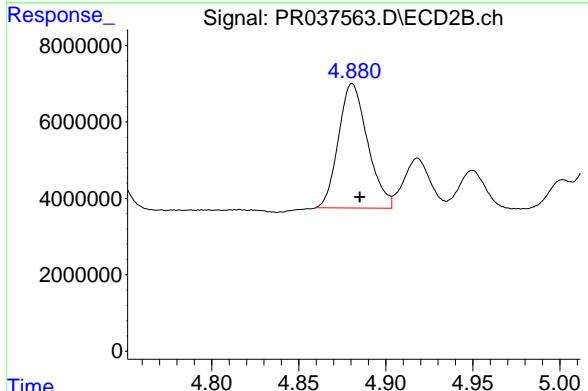
R.T.: 4.675 min
 Delta R.T.: -0.005 min
 Response: 28734088
 Conc: 259.72 ng/ml



#7 AR-1016-5

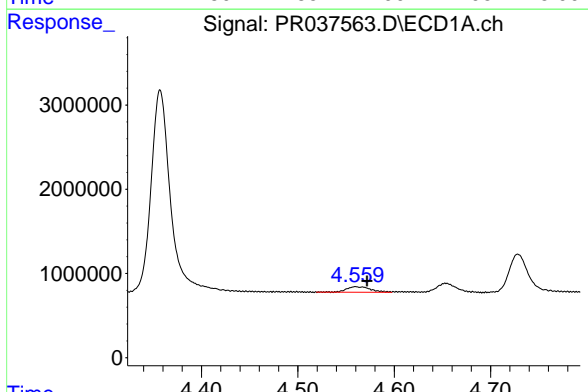
R.T.: 5.989 min
 Delta R.T.: -0.008 min
 Response: 8725162
 Conc: 254.45 ng/ml

Instrument :
 ECD_R
 ClientSampleId :
 PB119285BSD



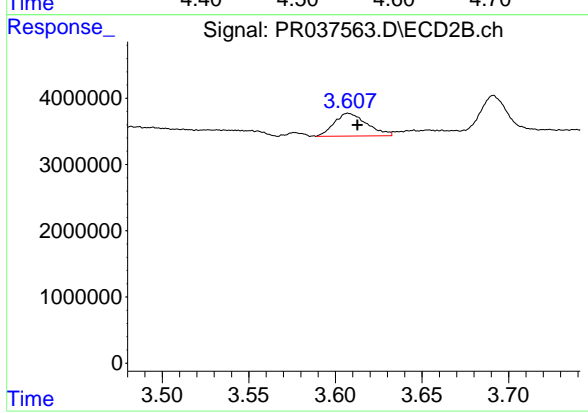
#7 AR-1016-5

R.T.: 4.881 min
 Delta R.T.: -0.004 min
 Response: 37934978
 Conc: 249.56 ng/ml



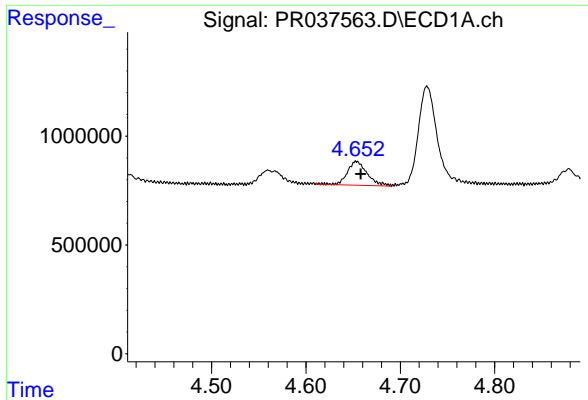
#8 AR-1221-1

R.T.: 4.560 min
 Delta R.T.: -0.012 min
 Response: 1102304
 Conc: 88.16 ng/ml



#8 AR-1221-1

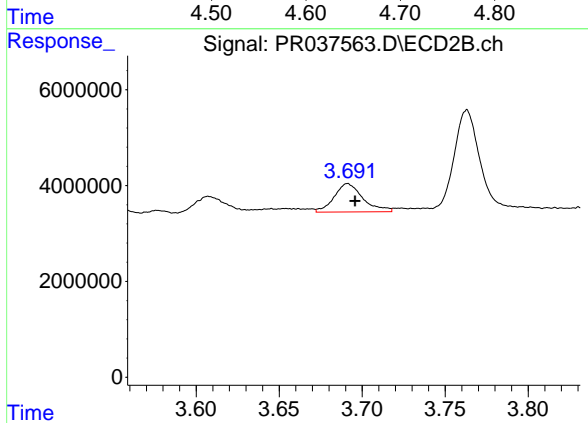
R.T.: 3.607 min
 Delta R.T.: -0.005 min
 Response: 4481717
 Conc: 88.02 ng/ml



#9 AR-1221-2

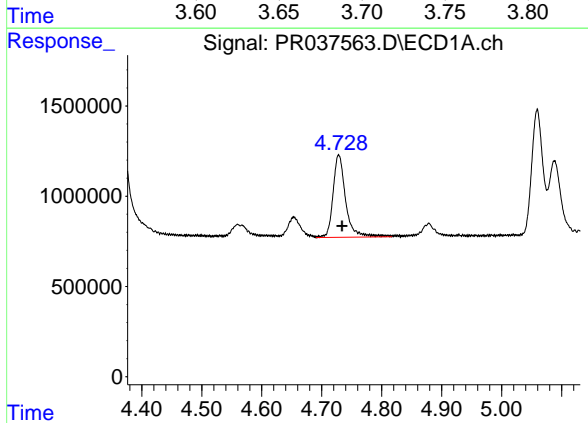
R.T.: 4.653 min
 Delta R.T.: -0.005 min
 Response: 1588984
 Conc: 175.70 ng/ml

Instrument :
 ECD_R
 ClientSampleId :
 PB119285BSD



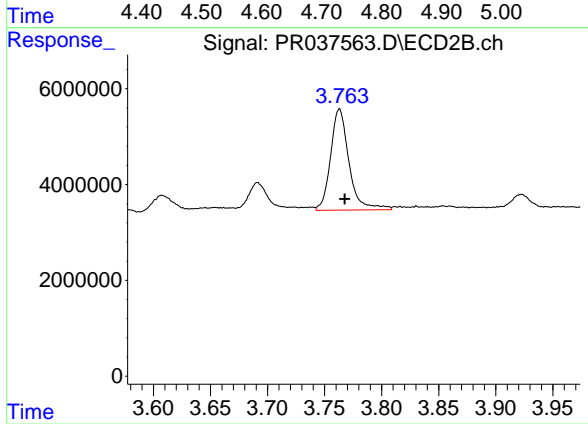
#9 AR-1221-2

R.T.: 3.691 min
 Delta R.T.: -0.004 min
 Response: 7146658
 Conc: 192.45 ng/ml



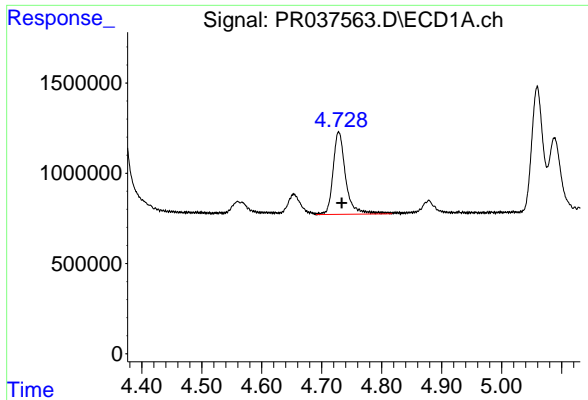
#10 AR-1221-3

R.T.: 4.728 min
 Delta R.T.: -0.006 min
 Response: 6656308
 Conc: 217.18 ng/ml



#10 AR-1221-3

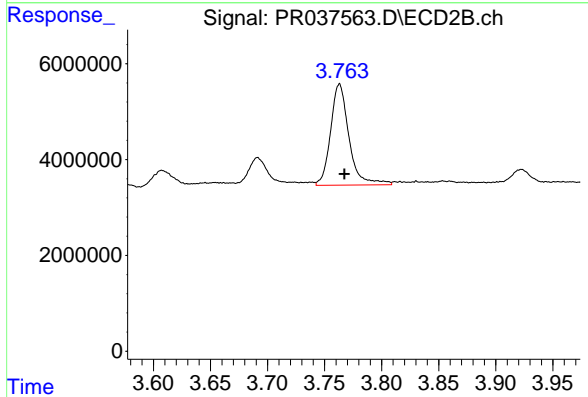
R.T.: 3.763 min
 Delta R.T.: -0.004 min
 Response: 23730541
 Conc: 193.80 ng/ml



#11 AR-1232-1

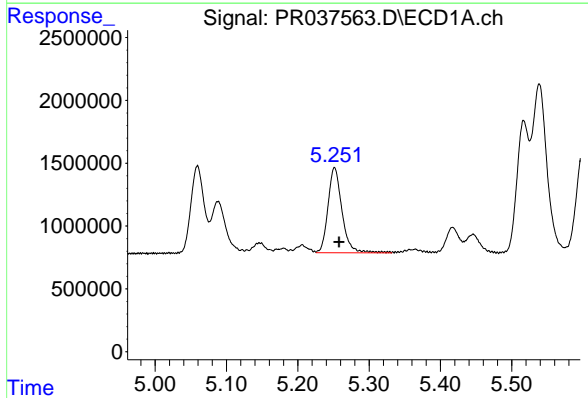
R.T.: 4.728 min
 Delta R.T.: -0.005 min
 Response: 6656308
 Conc: 227.56 ng/ml

Instrument :
 ECD_R
 ClientSampleId :
 PB119285BSD



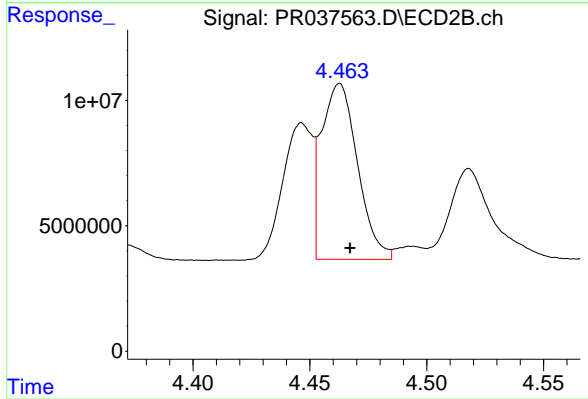
#11 AR-1232-1

R.T.: 3.763 min
 Delta R.T.: -0.004 min
 Response: 23730541
 Conc: 202.84 ng/ml



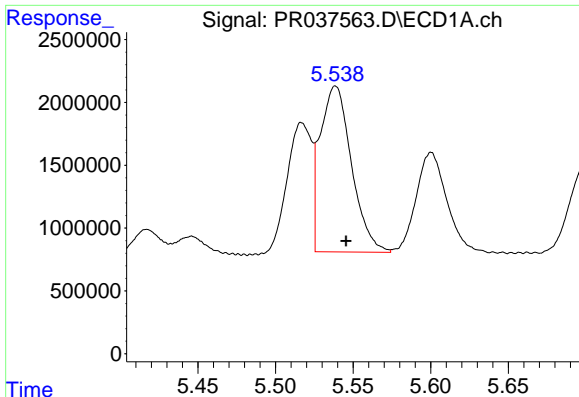
#12 AR-1232-2

R.T.: 5.252 min
 Delta R.T.: -0.006 min
 Response: 9256270
 Conc: 547.79 ng/ml



#12 AR-1232-2

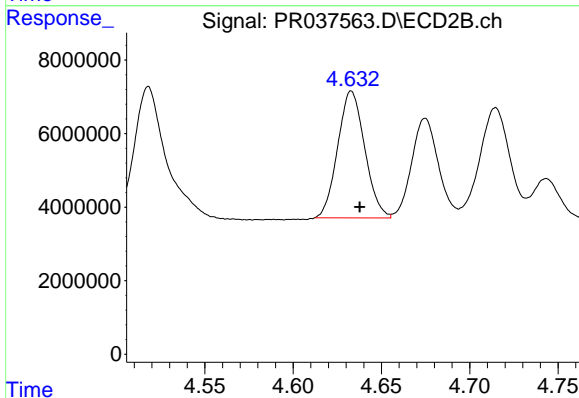
R.T.: 4.463 min
 Delta R.T.: -0.004 min
 Response: 75301358
 Conc: 544.77 ng/ml



#13 AR-1232-3

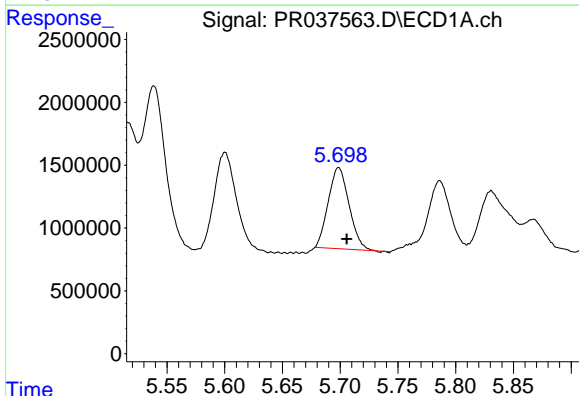
R.T.: 5.539 min
 Delta R.T.: -0.007 min
 Response: 18598585
 Conc: 550.18 ng/ml

Instrument :
 ECD_R
 ClientSampleId :
 PB119285BSD



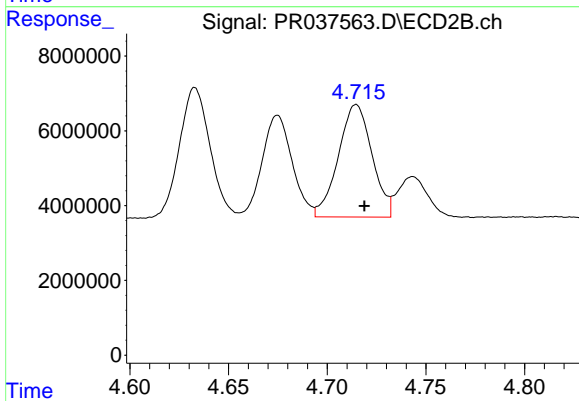
#13 AR-1232-3

R.T.: 4.633 min
 Delta R.T.: -0.005 min
 Response: 36799061
 Conc: 524.19 ng/ml



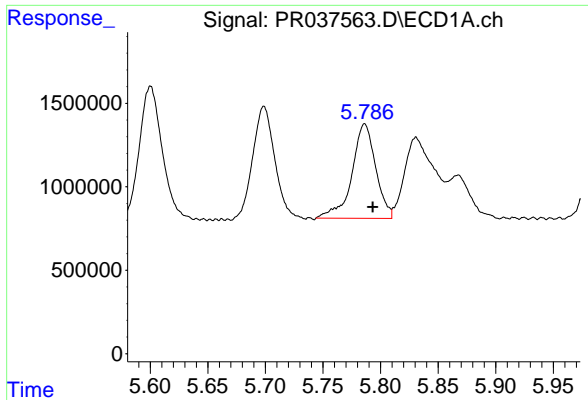
#14 AR-1232-4

R.T.: 5.699 min
 Delta R.T.: -0.007 min
 Response: 8052476
 Conc: 513.00 ng/ml



#14 AR-1232-4

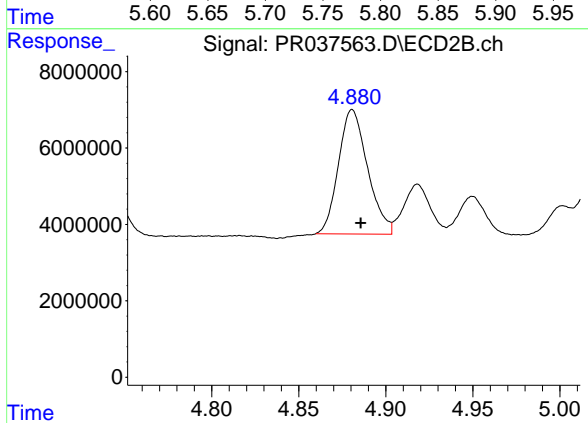
R.T.: 4.715 min
 Delta R.T.: -0.004 min
 Response: 35739177
 Conc: 598.93 ng/ml



#15 AR-1232-5

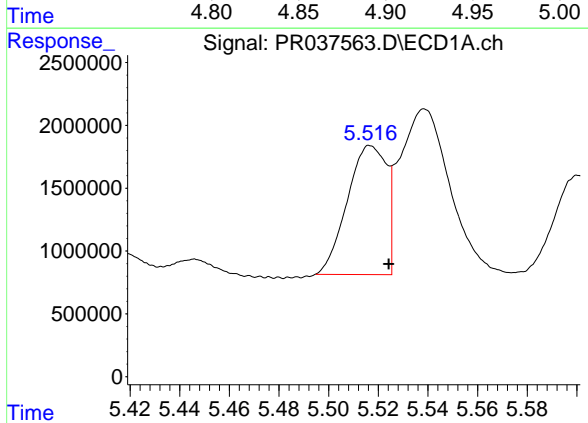
R.T.: 5.786 min
 Delta R.T.: -0.007 min
 Response: 8144846
 Conc: 696.40 ng/ml

Instrument :
 ECD_R
 ClientSampleId :
 PB119285BSD



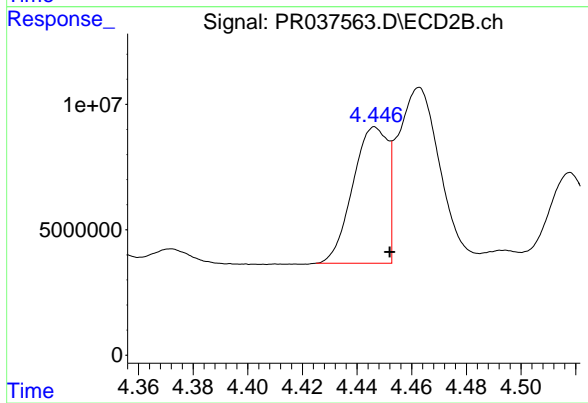
#15 AR-1232-5

R.T.: 4.881 min
 Delta R.T.: -0.005 min
 Response: 37934978
 Conc: 555.87 ng/ml



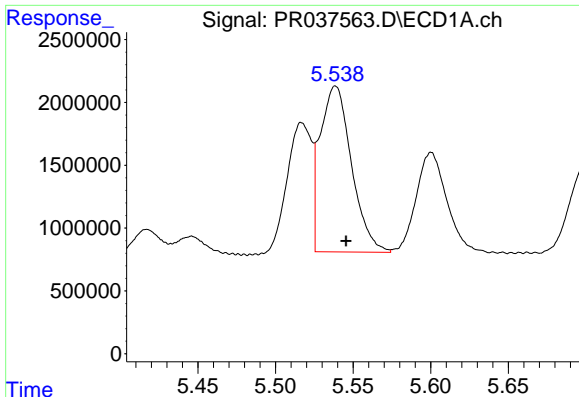
#16 AR-1242-1

R.T.: 5.517 min
 Delta R.T.: -0.007 min
 Response: 11243965
 Conc: 328.63 ng/ml



#16 AR-1242-1

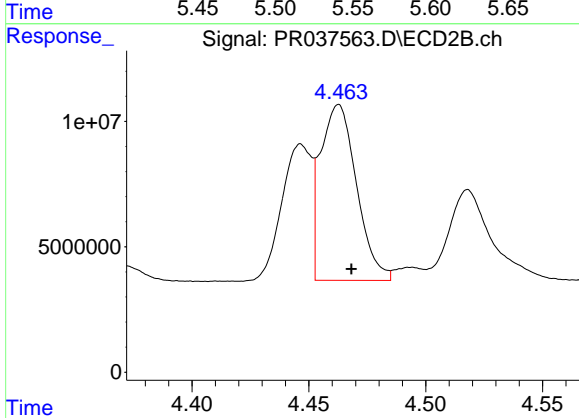
R.T.: 4.447 min
 Delta R.T.: -0.005 min
 Response: 47991110
 Conc: 327.50 ng/ml



#17 AR-1242-2

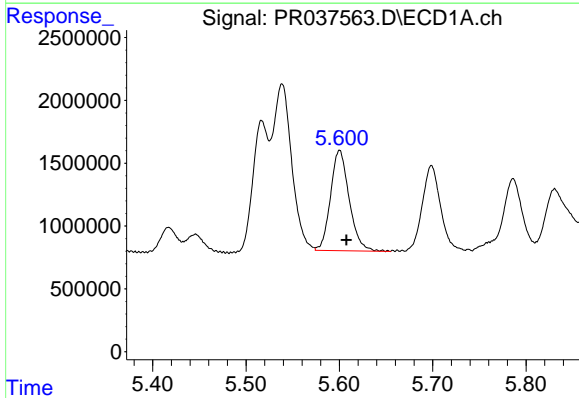
R.T.: 5.539 min
 Delta R.T.: -0.007 min
 Response: 18598585
 Conc: 335.29 ng/ml

Instrument :
 ECD_R
 ClientSampleId :
 PB119285BSD



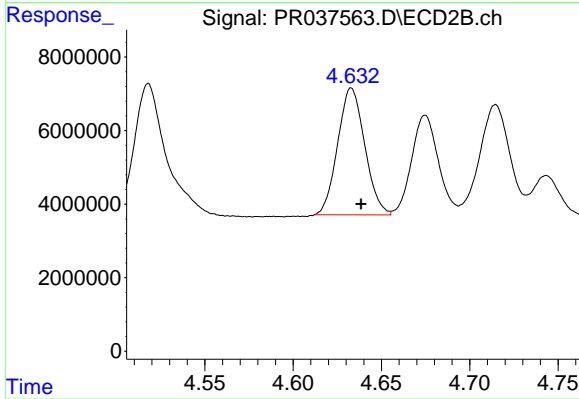
#17 AR-1242-2

R.T.: 4.463 min
 Delta R.T.: -0.005 min
 Response: 75301358
 Conc: 330.04 ng/ml



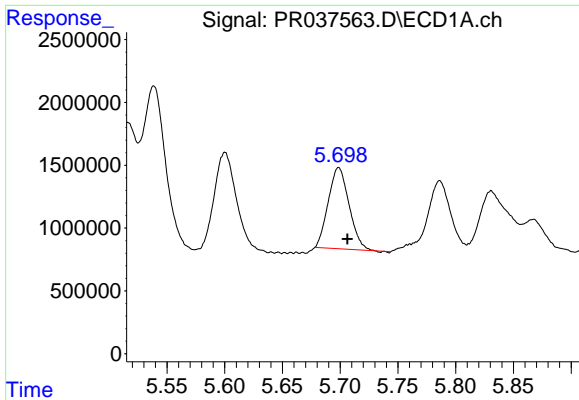
#18 AR-1242-3

R.T.: 5.600 min
 Delta R.T.: -0.007 min
 Response: 11121907
 Conc: 337.90 ng/ml



#18 AR-1242-3

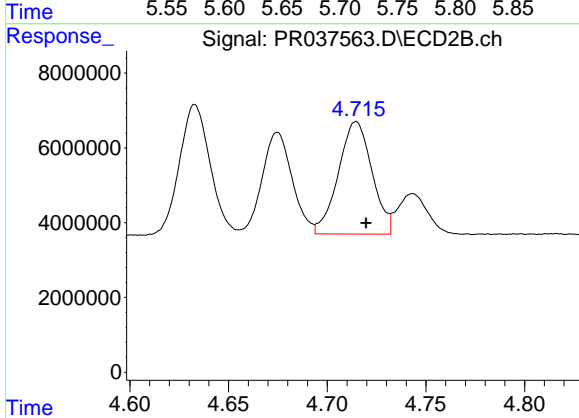
R.T.: 4.633 min
 Delta R.T.: -0.006 min
 Response: 36799061
 Conc: 318.25 ng/ml



#19 AR-1242-4

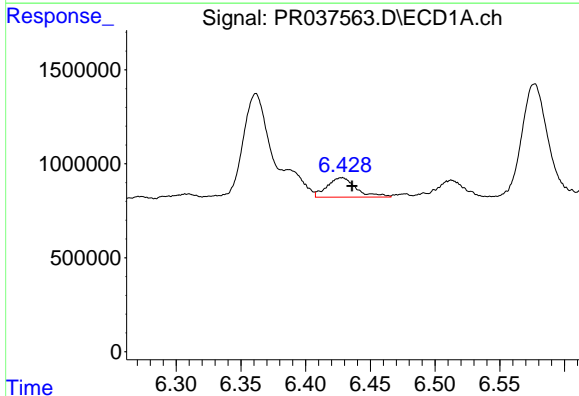
R.T.: 5.699 min
Delta R.T.: -0.008 min
Response: 8052476
Conc: 305.28 ng/ml

Instrument :
ECD_R
ClientSampleId :
PB119285BSD



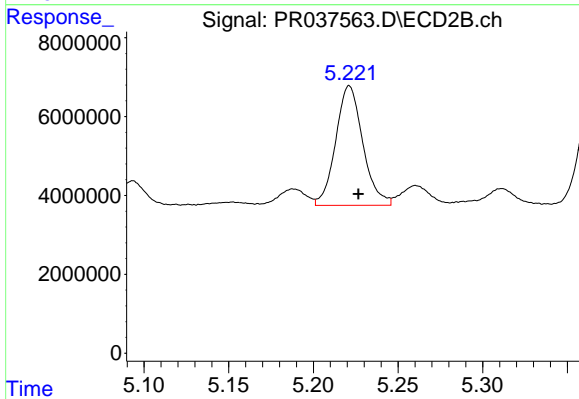
#19 AR-1242-4

R.T.: 4.715 min
Delta R.T.: -0.005 min
Response: 35739177
Conc: 325.17 ng/ml



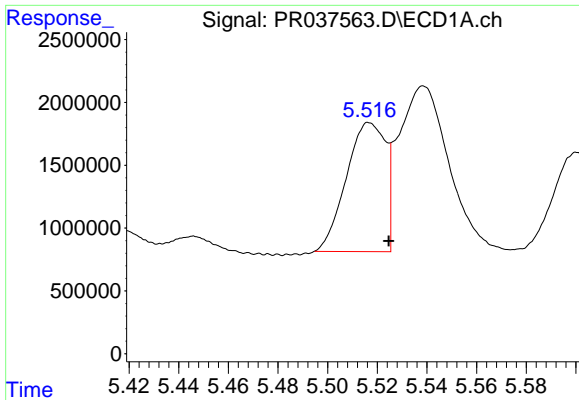
#20 AR-1242-5

R.T.: 6.428 min
Delta R.T.: -0.008 min
Response: 1617203
Conc: 50.26 ng/ml



#20 AR-1242-5

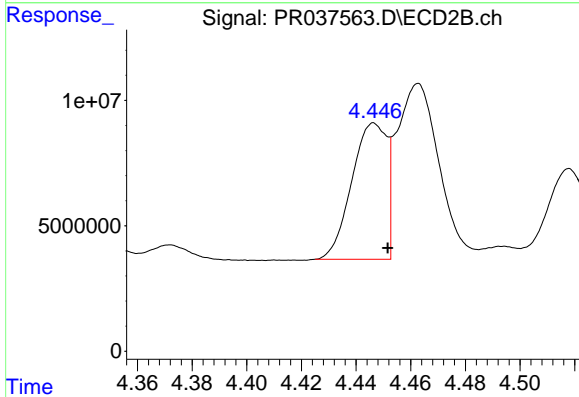
R.T.: 5.221 min
Delta R.T.: -0.005 min
Response: 33909284
Conc: 204.64 ng/ml



#21 AR-1248-1

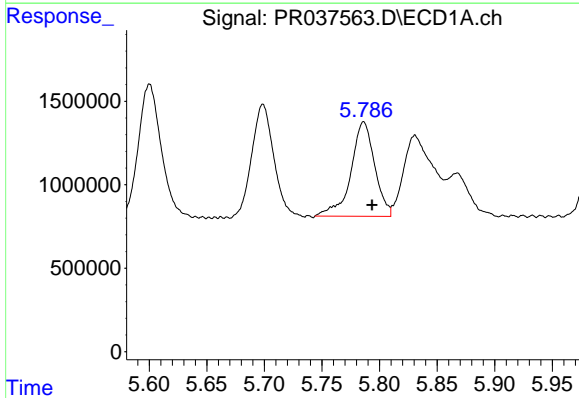
R.T.: 5.517 min
Delta R.T.: -0.008 min
Response: 11243965
Conc: 490.84 ng/ml

Instrument :
ECD_R
ClientSampleId :
PB119285BSD



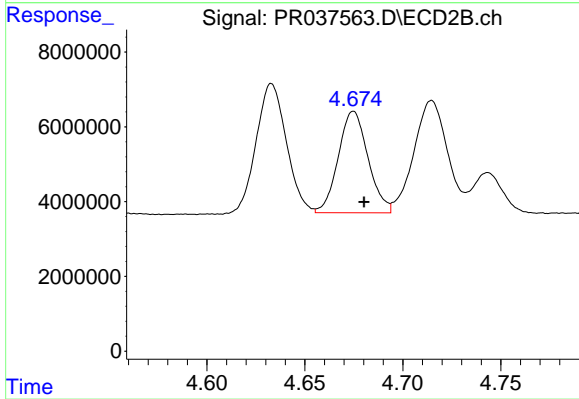
#21 AR-1248-1

R.T.: 4.447 min
Delta R.T.: -0.005 min
Response: 47991110
Conc: 476.75 ng/ml



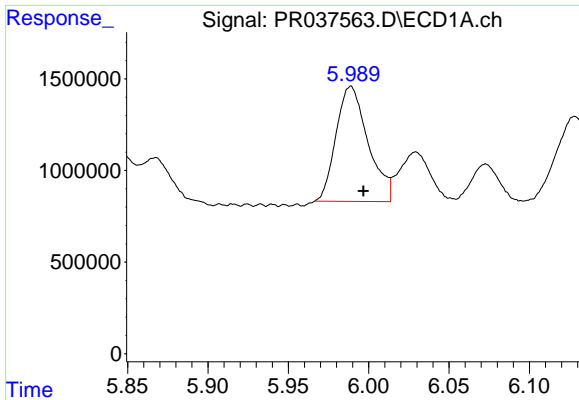
#22 AR-1248-2

R.T.: 5.786 min
Delta R.T.: -0.007 min
Response: 8144846
Conc: 232.61 ng/ml



#22 AR-1248-2

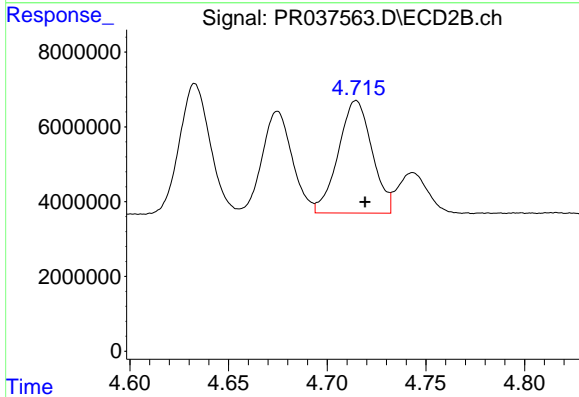
R.T.: 4.675 min
Delta R.T.: -0.005 min
Response: 28734088
Conc: 210.55 ng/ml



#23 AR-1248-3

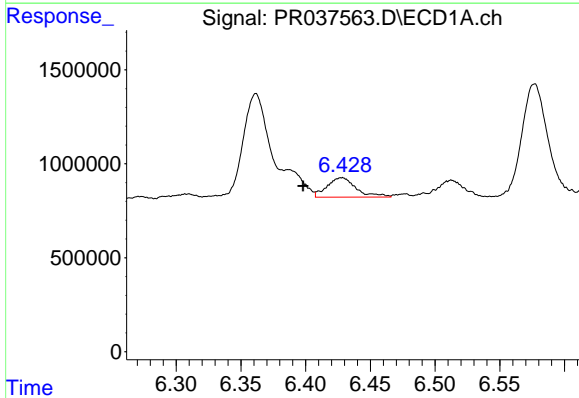
R.T.: 5.989 min
 Delta R.T.: -0.008 min
 Response: 8725162
 Conc: 213.28 ng/ml

Instrument :
 ECD_R
 ClientSampleId :
 PB119285BSD



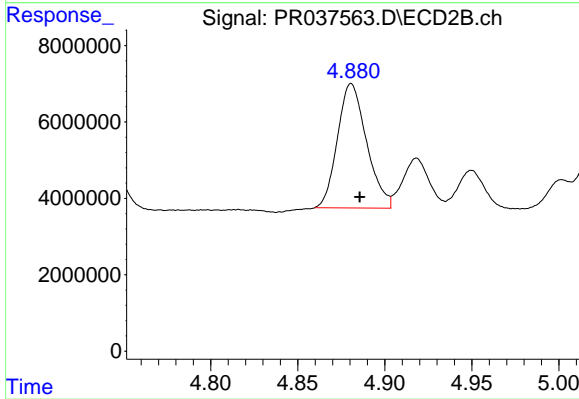
#23 AR-1248-3

R.T.: 4.715 min
 Delta R.T.: -0.005 min
 Response: 35739177
 Conc: 255.33 ng/ml



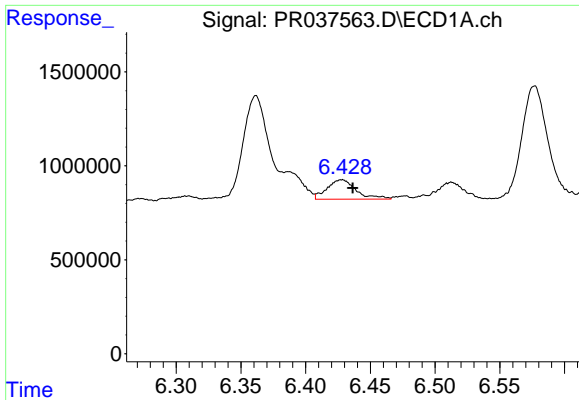
#24 AR-1248-4

R.T.: 6.428 min
 Delta R.T.: 0.030 min
 Response: 1617203
 Conc: 33.03 ng/ml



#24 AR-1248-4

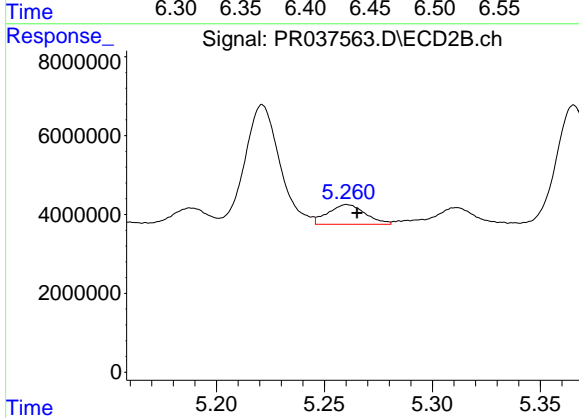
R.T.: 4.881 min
 Delta R.T.: -0.005 min
 Response: 37934978
 Conc: 213.16 ng/ml



#25 AR-1248-5

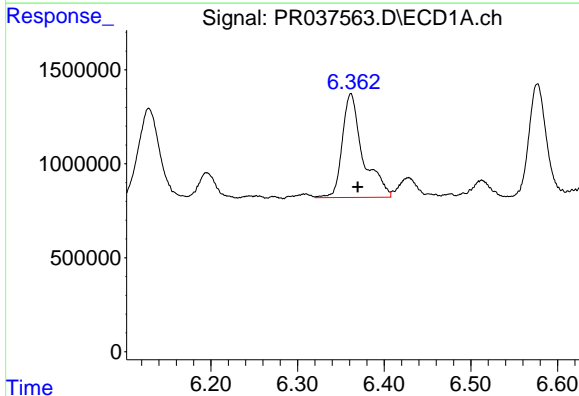
R.T.: 6.428 min
 Delta R.T.: -0.008 min
 Response: 1617203
 Conc: 34.24 ng/ml

Instrument :
 ECD_R
ClientSampleId :
 PB119285BSD



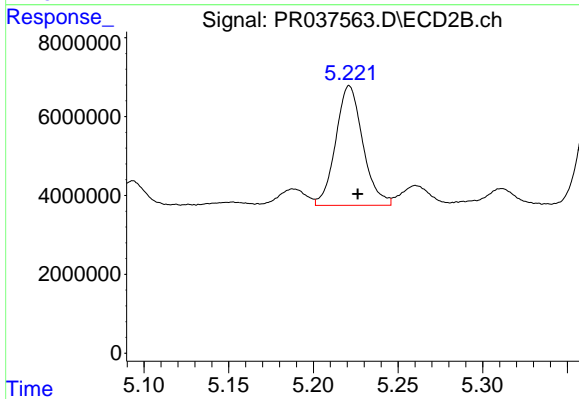
#25 AR-1248-5

R.T.: 5.261 min
 Delta R.T.: -0.005 min
 Response: 6019100
 Conc: 30.77 ng/ml



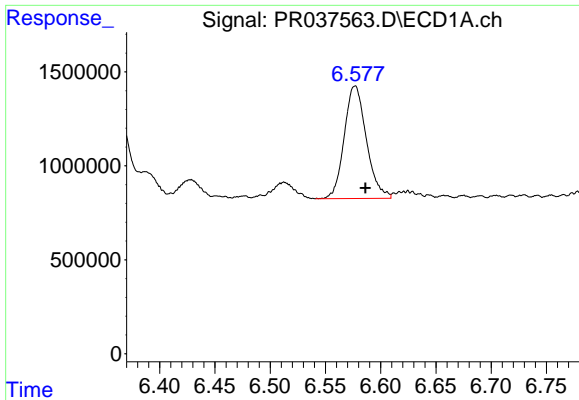
#26 AR-1254-1

R.T.: 6.362 min
 Delta R.T.: -0.008 min
 Response: 9143276
 Conc: 167.36 ng/ml



#26 AR-1254-1

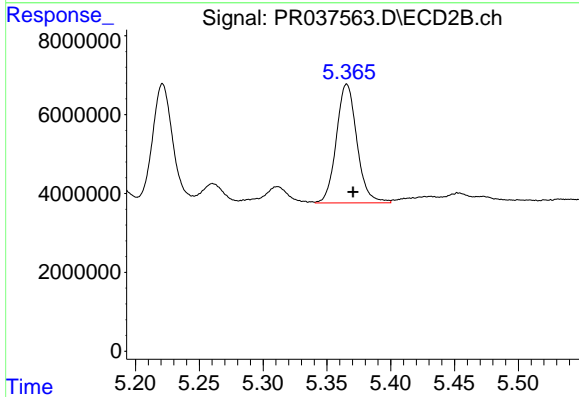
R.T.: 5.221 min
 Delta R.T.: -0.005 min
 Response: 33909284
 Conc: 98.44 ng/ml



#27 AR-1254-2

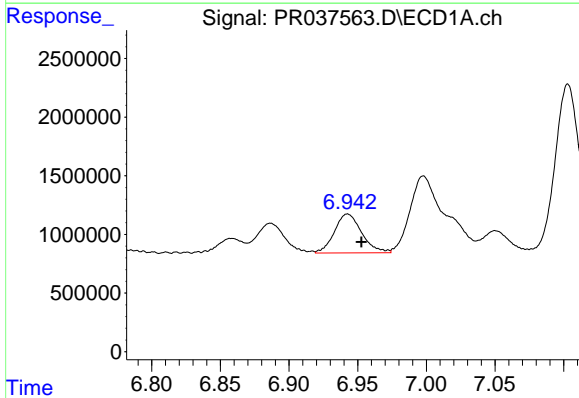
R.T.: 6.577 min
 Delta R.T.: -0.009 min
 Response: 8351619
 Conc: 97.45 ng/ml

Instrument :
 ECD_R
 ClientSampleId :
 PB119285BSD



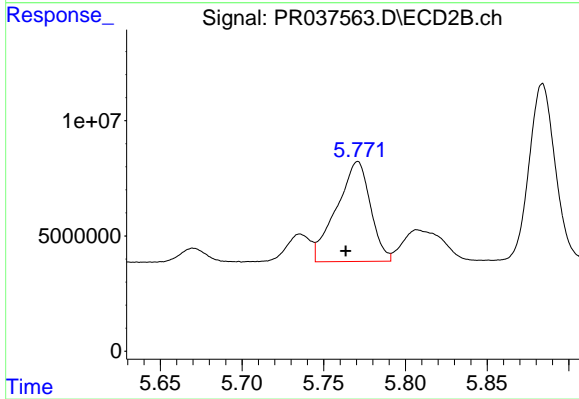
#27 AR-1254-2

R.T.: 5.366 min
 Delta R.T.: -0.005 min
 Response: 33841624
 Conc: 112.99 ng/ml



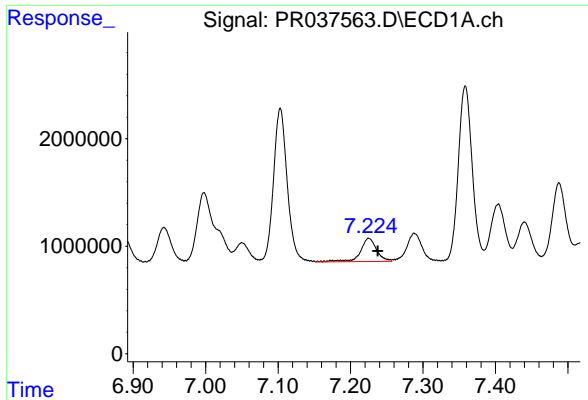
#28 AR-1254-3

R.T.: 6.943 min
 Delta R.T.: -0.010 min
 Response: 4565605
 Conc: 50.19 ng/ml



#28 AR-1254-3

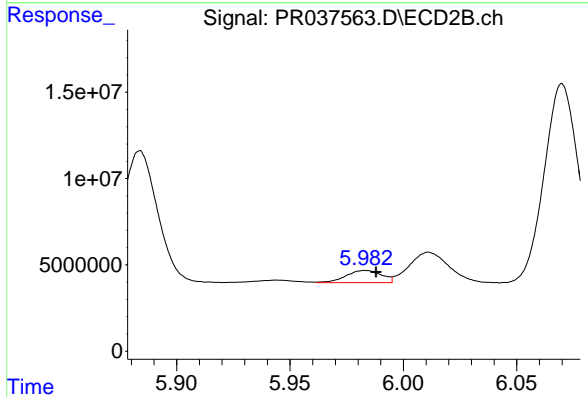
R.T.: 5.771 min
 Delta R.T.: 0.007 min
 Response: 62480035
 Conc: 131.92 ng/ml



#29 AR-1254-4

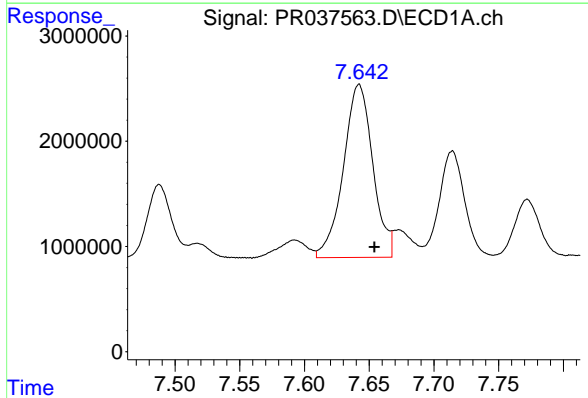
R.T.: 7.225 min
 Delta R.T.: -0.013 min
 Response: 3369984
 Conc: 50.29 ng/ml

Instrument :
 ECD_R
ClientSampleId :
 PB119285BSD



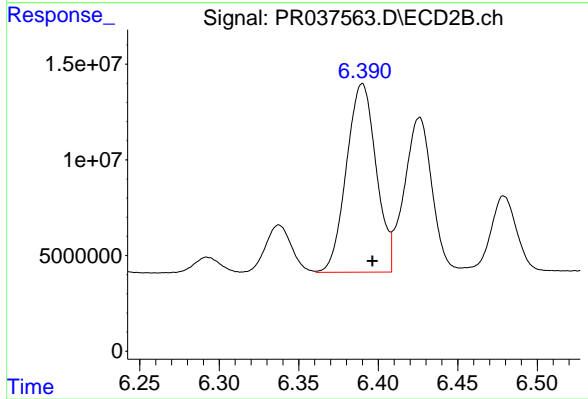
#29 AR-1254-4

R.T.: 5.983 min
 Delta R.T.: -0.005 min
 Response: 7706461
 Conc: 21.98 ng/ml



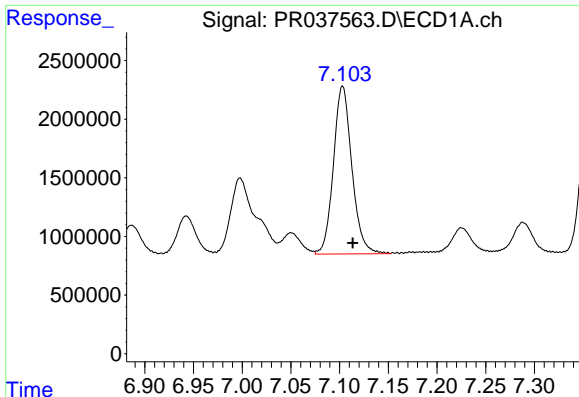
#30 AR-1254-5

R.T.: 7.642 min
 Delta R.T.: -0.012 min
 Response: 26052916
 Conc: 362.45 ng/ml



#30 AR-1254-5

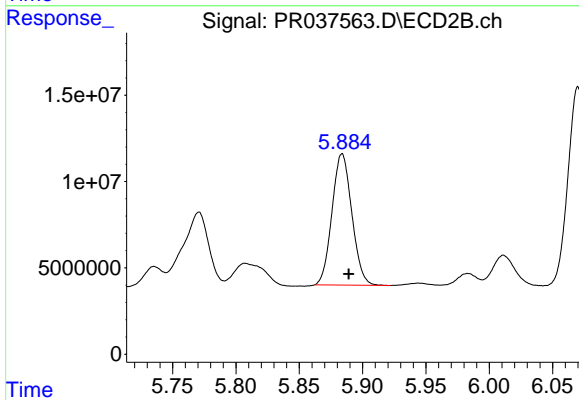
R.T.: 6.390 min
 Delta R.T.: -0.006 min
 Response: 128112692
 Conc: 289.31 ng/ml



#31 AR-1260-1

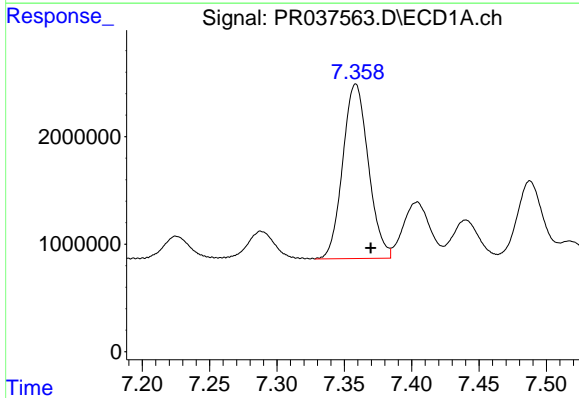
R.T.: 7.103 min
 Delta R.T.: -0.011 min
 Response: 18859023
 Conc: 285.80 ng/ml

Instrument :
 ECD_R
 ClientSampleId :
 PB119285BSD



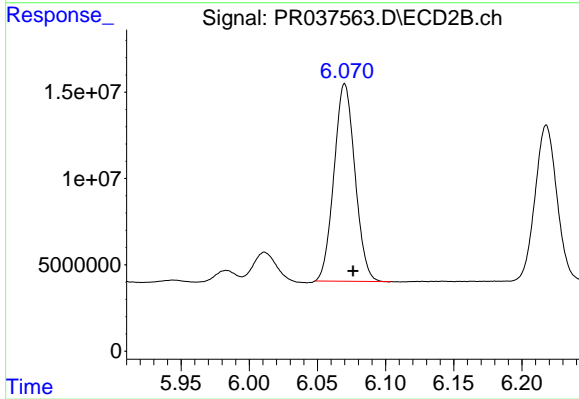
#31 AR-1260-1

R.T.: 5.884 min
 Delta R.T.: -0.005 min
 Response: 82830709
 Conc: 283.40 ng/ml



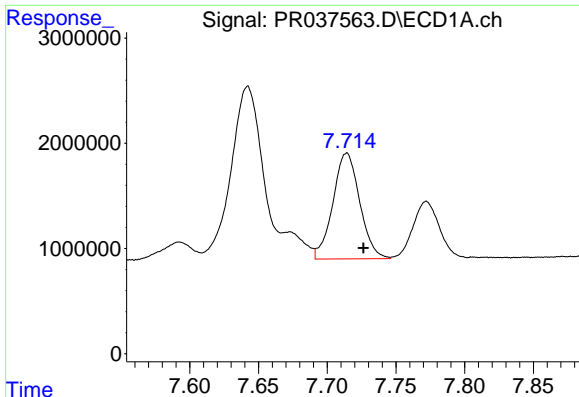
#32 AR-1260-2

R.T.: 7.358 min
 Delta R.T.: -0.011 min
 Response: 21487199
 Conc: 269.59 ng/ml



#32 AR-1260-2

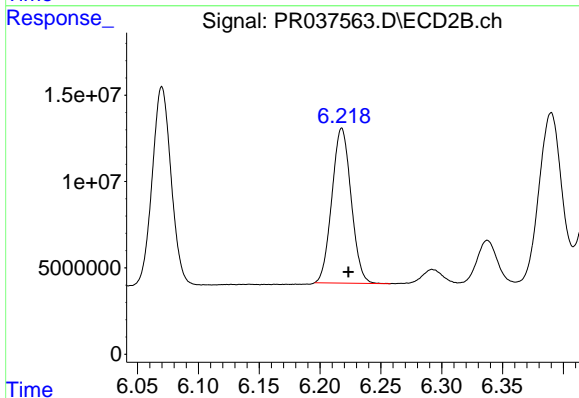
R.T.: 6.070 min
 Delta R.T.: -0.006 min
 Response: 122392400
 Conc: 265.73 ng/ml



#33 AR-1260-3

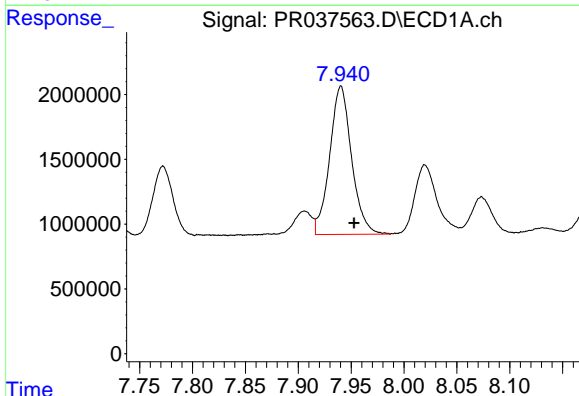
R.T.: 7.714 min
 Delta R.T.: -0.012 min
 Response: 13658113
 Conc: 218.27 ng/ml

Instrument :
 ECD_R
 ClientSampleId :
 PB119285BSD



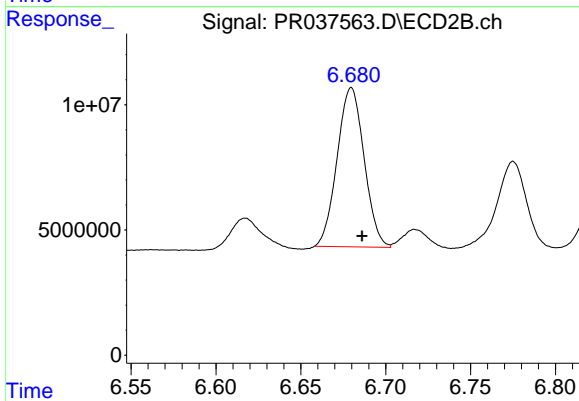
#33 AR-1260-3

R.T.: 6.218 min
 Delta R.T.: -0.006 min
 Response: 98531626
 Conc: 276.39 ng/ml



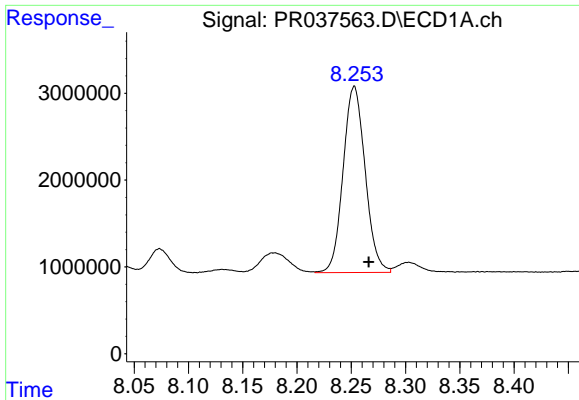
#34 AR-1260-4

R.T.: 7.940 min
 Delta R.T.: -0.013 min
 Response: 16540051
 Conc: 222.30 ng/ml



#34 AR-1260-4

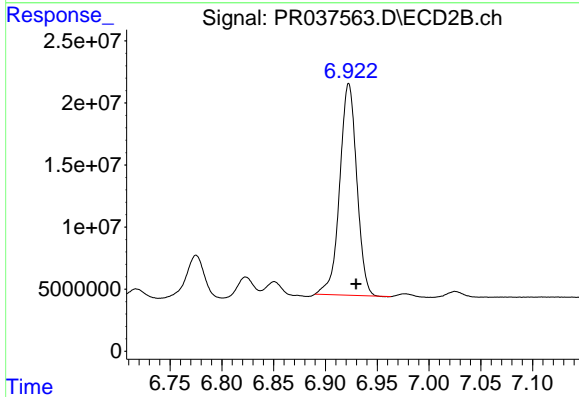
R.T.: 6.680 min
 Delta R.T.: -0.006 min
 Response: 70397996
 Conc: 230.99 ng/ml



#35 AR-1260-5

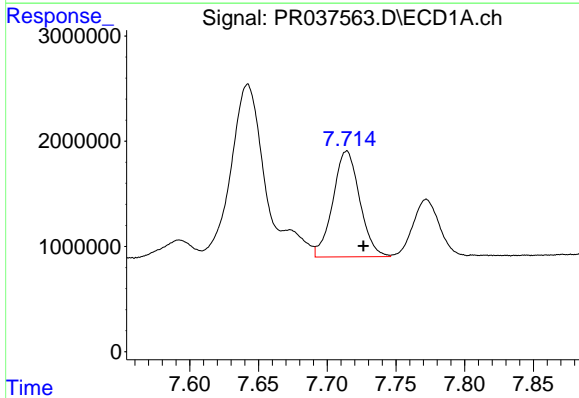
R.T.: 8.253 min
 Delta R.T.: -0.013 min
 Response: 30338664
 Conc: 209.78 ng/ml

Instrument :
 ECD_R
 ClientSampleId :
 PB119285BSD



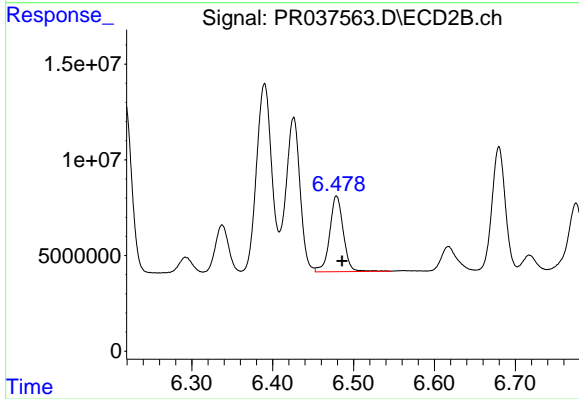
#35 AR-1260-5

R.T.: 6.923 min
 Delta R.T.: -0.007 min
 Response: 195834953
 Conc: 225.81 ng/ml



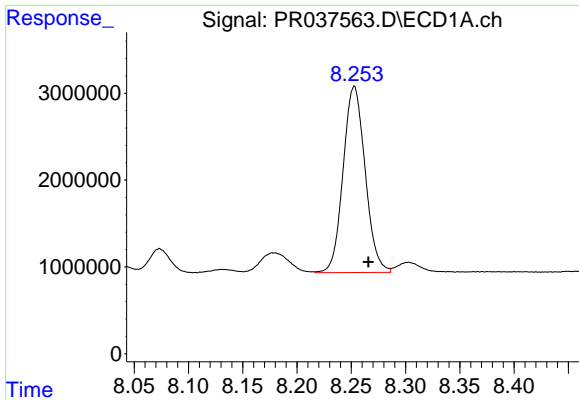
#36 AR-1262-1

R.T.: 7.714 min
 Delta R.T.: -0.012 min
 Response: 13658113
 Conc: 130.76 ng/ml



#36 AR-1262-1

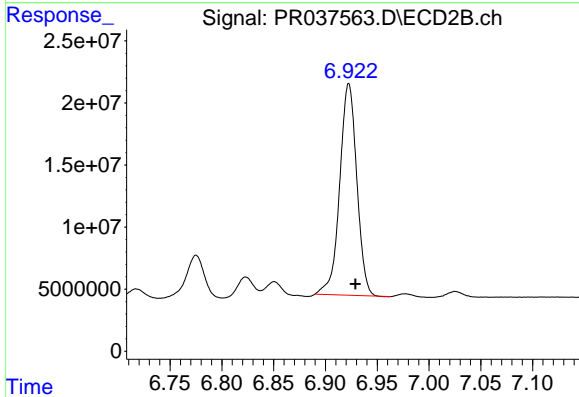
R.T.: 6.479 min
 Delta R.T.: -0.007 min
 Response: 46224655
 Conc: 184.44 ng/ml



#37 AR-1262-2

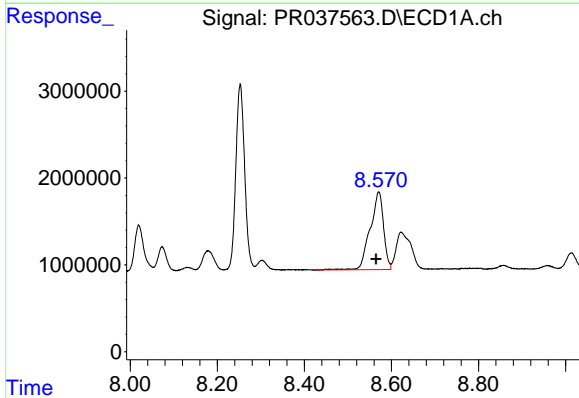
R.T.: 8.253 min
 Delta R.T.: -0.013 min
 Response: 30338664
 Conc: 156.08 ng/ml

Instrument :
 ECD_R
 ClientSampleId :
 PB119285BSD



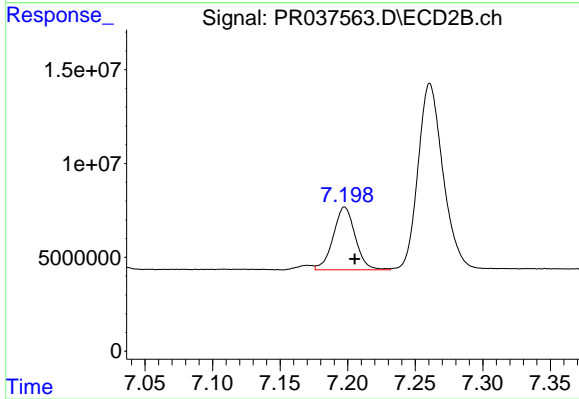
#37 AR-1262-2

R.T.: 6.923 min
 Delta R.T.: -0.006 min
 Response: 195834953
 Conc: 155.93 ng/ml



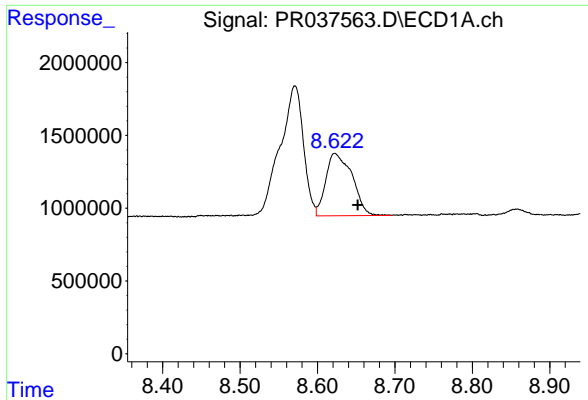
#38 AR-1262-3

R.T.: 8.571 min
 Delta R.T.: 0.006 min
 Response: 19047723
 Conc: 144.84 ng/ml



#38 AR-1262-3

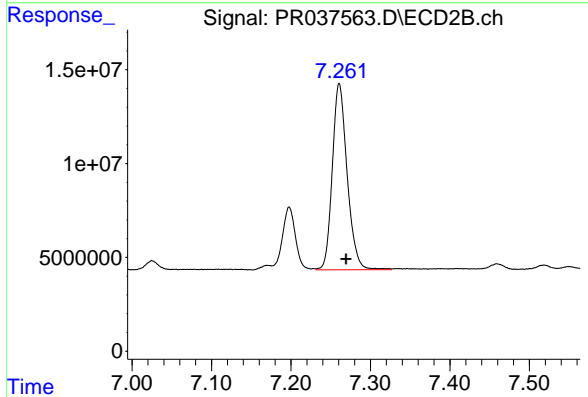
R.T.: 7.198 min
 Delta R.T.: -0.007 min
 Response: 38053351
 Conc: 69.41 ng/ml



#39 AR-1262-4

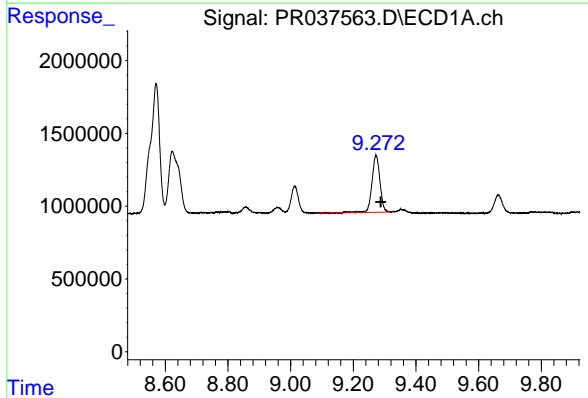
R.T.: 8.622 min
 Delta R.T.: -0.030 min
 Response: 10100971
 Conc: 102.83 ng/ml

Instrument :
 ECD_R
 ClientSampleId :
 PB119285BSD



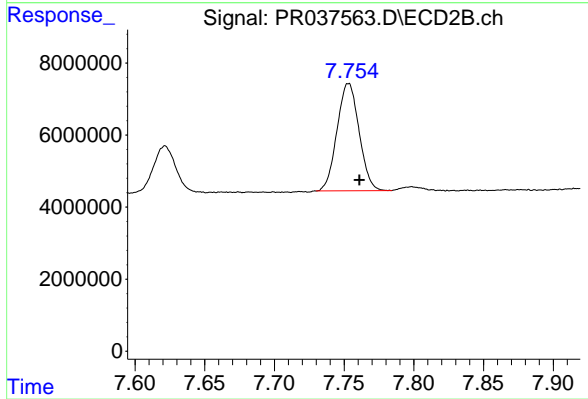
#39 AR-1262-4

R.T.: 7.261 min
 Delta R.T.: -0.008 min
 Response: 128853337
 Conc: 143.55 ng/ml



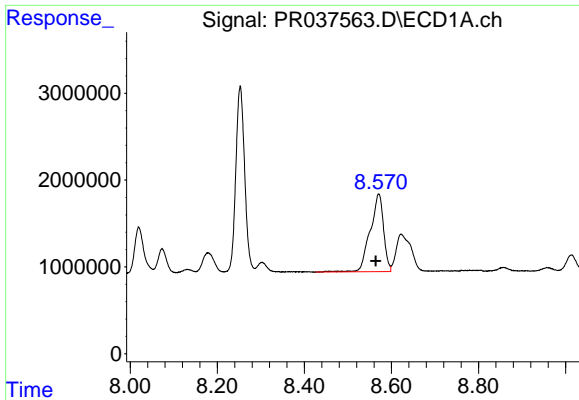
#40 AR-1262-5

R.T.: 9.273 min
 Delta R.T.: -0.015 min
 Response: 6863540
 Conc: 99.41 ng/ml



#40 AR-1262-5

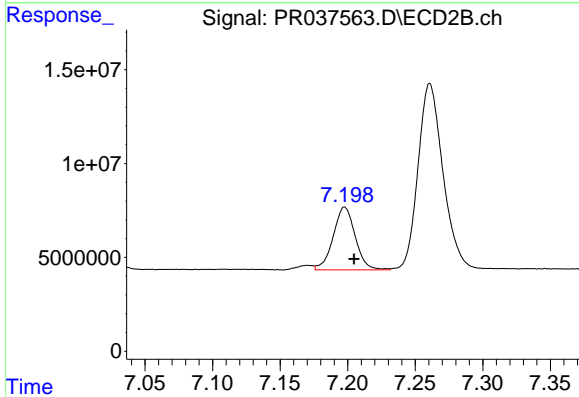
R.T.: 7.753 min
 Delta R.T.: -0.008 min
 Response: 32839228
 Conc: 85.83 ng/ml



#41 AR-1268-1

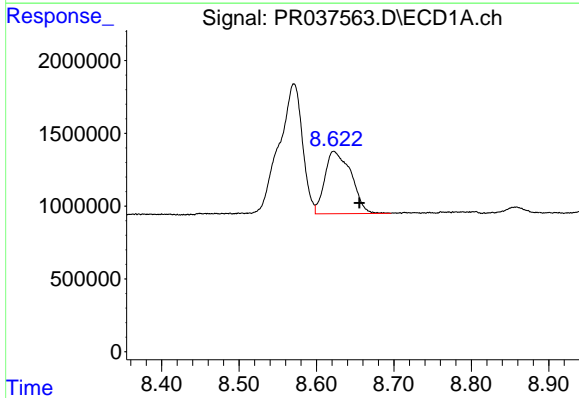
R.T.: 8.571 min
 Delta R.T.: 0.007 min
 Response: 19047723
 Conc: 106.36 ng/ml

Instrument :
 ECD_R
 ClientSampleId :
 PB119285BSD



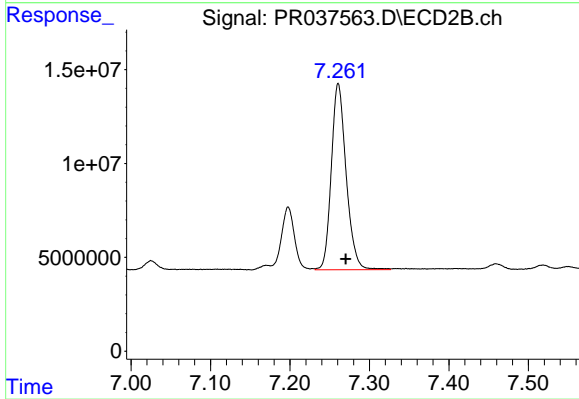
#41 AR-1268-1

R.T.: 7.198 min
 Delta R.T.: -0.007 min
 Response: 38053351
 Conc: 30.91 ng/ml



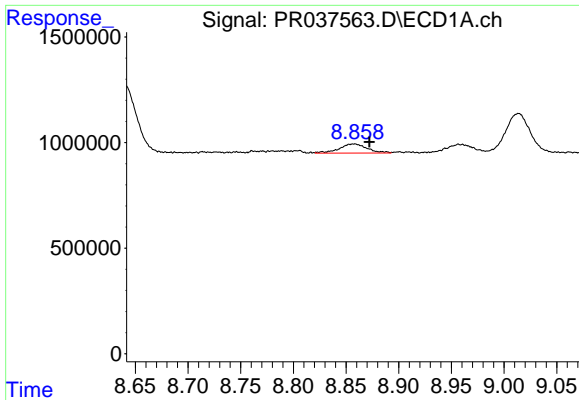
#42 AR-1268-2

R.T.: 8.622 min
 Delta R.T.: -0.033 min
 Response: 10100971
 Conc: 61.41 ng/ml



#42 AR-1268-2

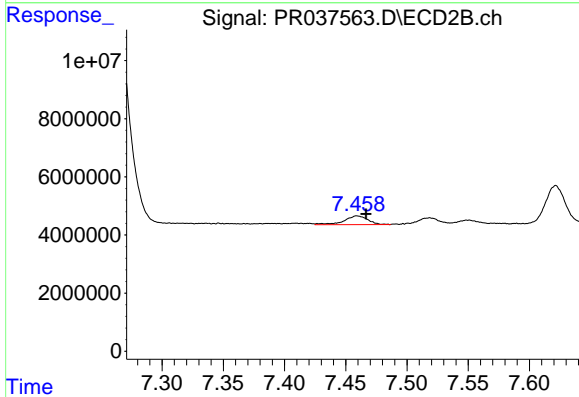
R.T.: 7.261 min
 Delta R.T.: -0.009 min
 Response: 128853337
 Conc: 121.68 ng/ml



#43 AR-1268-3

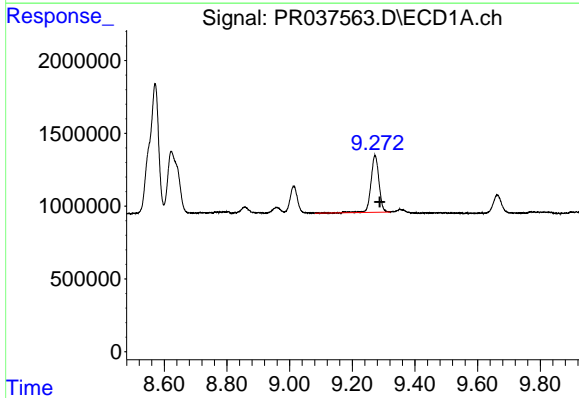
R.T.: 8.858 min
 Delta R.T.: -0.014 min
 Response: 796585
 Conc: 5.75 ng/ml

Instrument :
 ECD_R
 ClientSampleId :
 PB119285BSD



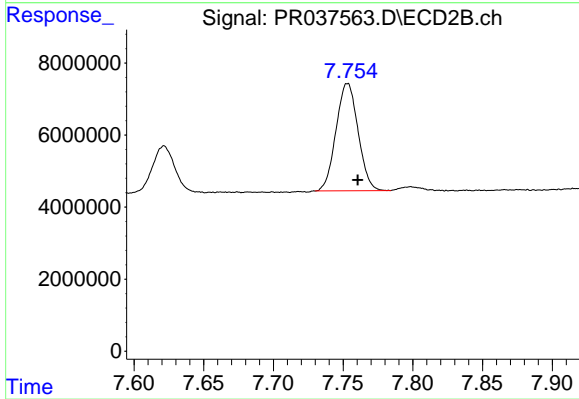
#43 AR-1268-3

R.T.: 7.459 min
 Delta R.T.: -0.007 min
 Response: 4111161
 Conc: 4.64 ng/ml



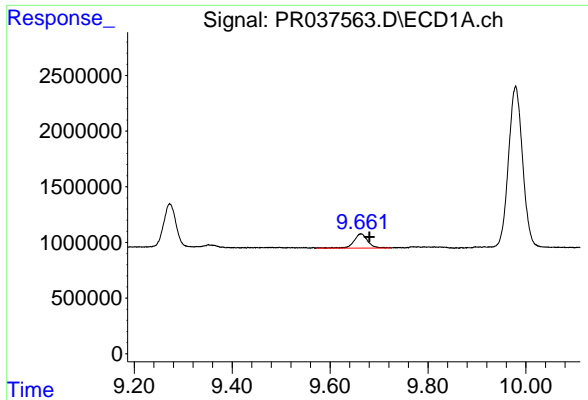
#44 AR-1268-4

R.T.: 9.273 min
 Delta R.T.: -0.015 min
 Response: 6863540
 Conc: 110.02 ng/ml



#44 AR-1268-4

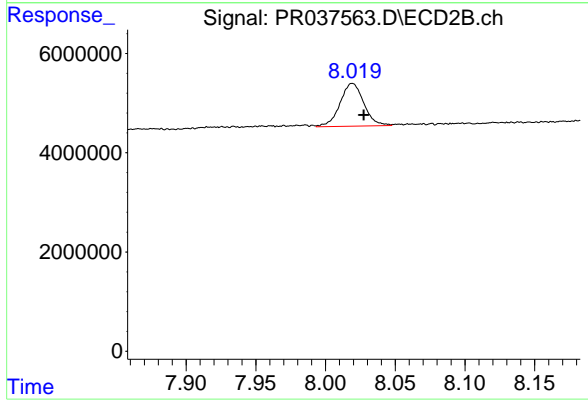
R.T.: 7.753 min
 Delta R.T.: -0.007 min
 Response: 32839228
 Conc: 90.52 ng/ml



#45 AR-1268-5

R.T.: 9.663 min
Delta R.T.: -0.018 min
Response: 2543217
Conc: 5.58 ng/ml

Instrument :
ECD_R
ClientSampleId :
PB119285BSD



#45 AR-1268-5

R.T.: 8.019 min
Delta R.T.: -0.008 min
Response: 10246342
Conc: 4.03 ng/ml