

Data Path : Z:\pestpcbsrv\HPCHEM1\ECD_R\Data\PR050219\
 Data File : PR037568.D
 Signal(s) : Signal #1: ECD1A.ch Signal #2: ECD2B.ch
 Acq On : 02 May 2019 18:32
 Operator : SM\SJ
 Sample : PB119401BL
 Misc :
 ALS Vial : 17 Sample Multiplier: 1

Instrument :
 ECD_R
 ClientSampleId :
 PB119401BL

Manual Integrations
 APPROVED

Ankita
 5/3/2019 3:27:36 PM

Integration File signal 1: autoint1.e
 Integration File signal 2: autoint2.e
 Quant Time: May 03 01:09:08 2019
 Quant Method : Z:\pestpcbsrv\HPCHEM1\ECD_R\Method\PR042219.M
 Quant Title : GC EXTRACTABLES
 QLast Update : Mon Apr 22 17:27:39 2019
 Response via : Initial Calibration
 Integrator: ChemStation

Volume Inj. : 2 µl
 Signal #1 Phase : ZB-MR1 Signal #2 Phase: ZB-MR2
 Signal #1 Info : 30Mx0.32mmx 0.50µ Signal #2 Info : 30M x 0.32mm x 0.25µm

Compound	RT#1	RT#2	Resp#1	Resp#2	ng/ml	ng/ml
----------	------	------	--------	--------	-------	-------

 System Monitoring Compounds

1) SA Tetrachlo...	4.357	3.402	29499232	117.9E6	23.581	24.596
2) SA Decachlor...	9.979	8.238	27706157	120.5E6	20.948m	20.682m

Target Compounds

(f)=RT Delta > 1/2 Window (#)=Amounts differ by > 25% (m)=manual int.

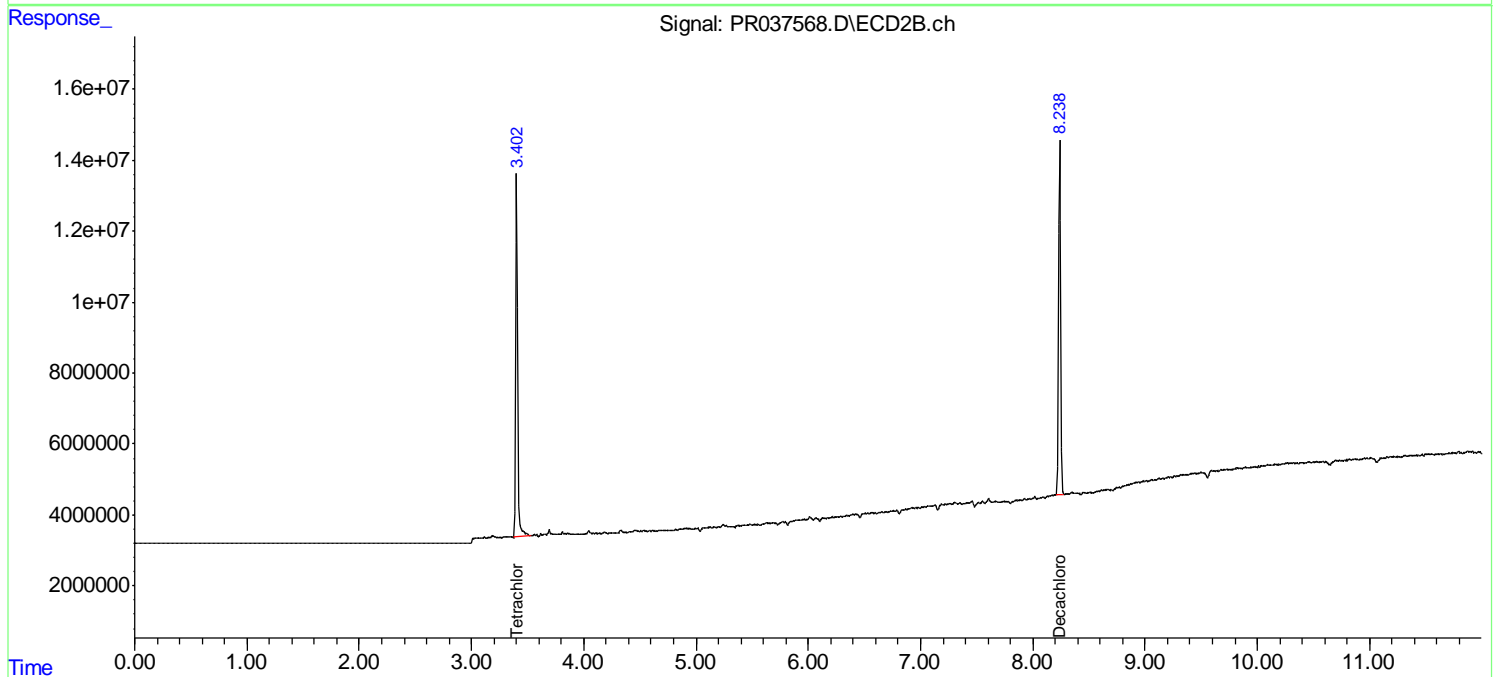
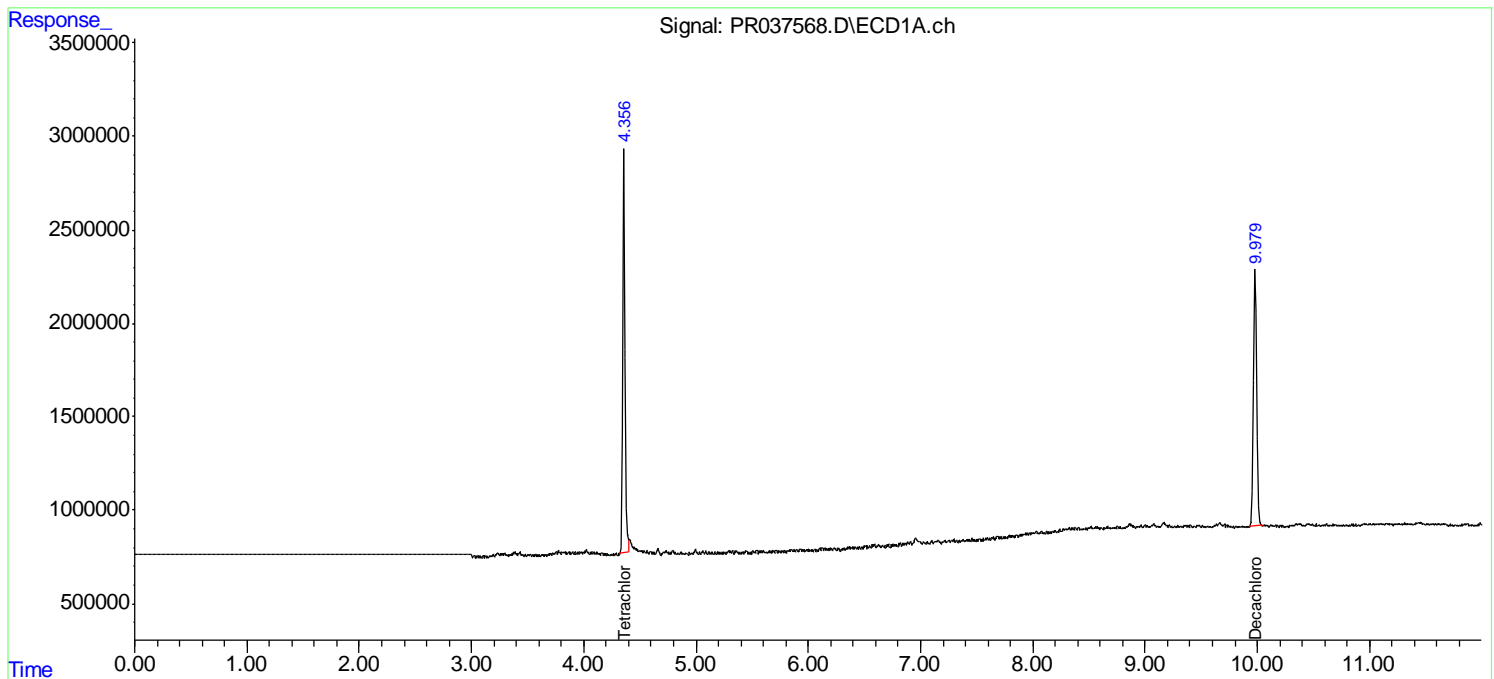
Data Path : Z:\pestpcbsrv\HPCHEM1\ECD_R\Data\PR050219\
 Data File : PR037568.D
 Signal(s) : Signal #1: ECD1A.ch Signal #2: ECD2B.ch
 Acq On : 02 May 2019 18:32
 Operator : SM\SJ
 Sample : PB119401BL
 Misc :
 ALS Vial : 17 Sample Multiplier: 1

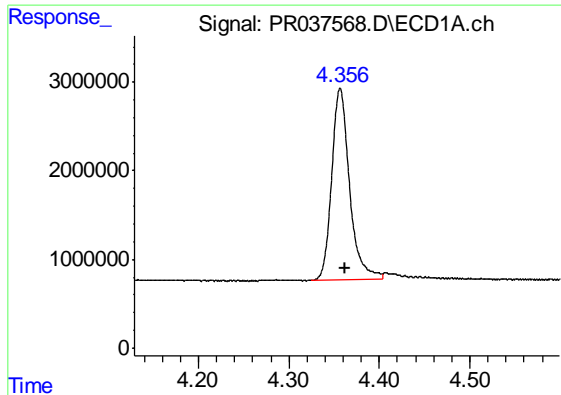
Instrument :
 ECD_R
Client Sampled :
 PB119401BL

Manual Integrations
APPROVED
 Ankita
 5/3/2019 3:27:36 PM

Integration File signal 1: autoint1.e
 Integration File signal 2: autoint2.e
 Quant Time: May 03 01:09:08 2019
 Quant Method : Z:\pestpcbsrv\HPCHEM1\ECD_R\Method\PR042219.M
 Quant Title : GC EXTRACTABLES
 QLast Update : Mon Apr 22 17:27:39 2019
 Response via : Initial Calibration
 Integrator: ChemStation

Volume Inj. : 2 µl
 Signal #1 Phase : ZB-MR1 Signal #2 Phase: ZB-MR2
 Signal #1 Info : 30Mx0.32mmx 0.50µ Signal #2 Info : 30M x 0.32mm x 0.25µm





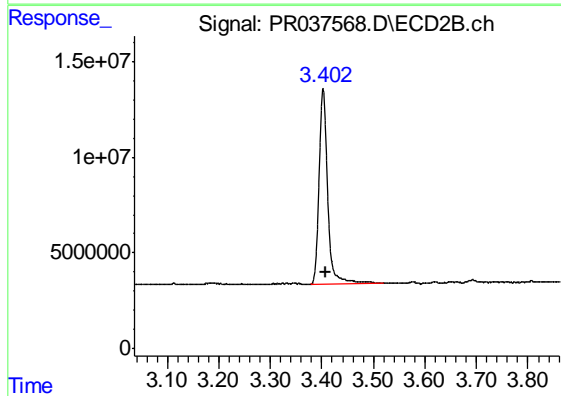
#1 Tetrachloro-m-xylene

R.T.: 4.357 min
 Delta R.T.: -0.005 min
 Response: 29499232
 Conc: 23.58 ng/ml

Instrument :
 ECD_R
 ClientSampleId :
 PB119401BL

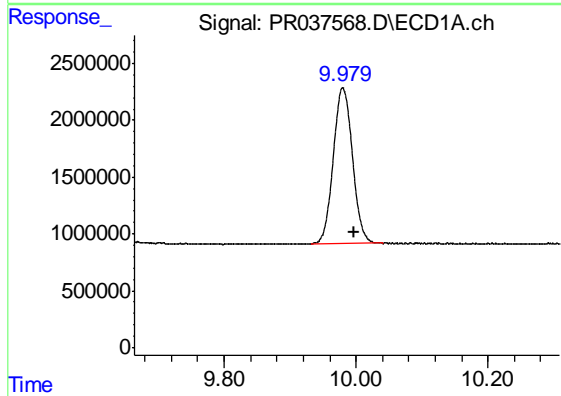
Manual Integrations
 APPROVED

Ankita
 5/3/2019 3:27:36 PM



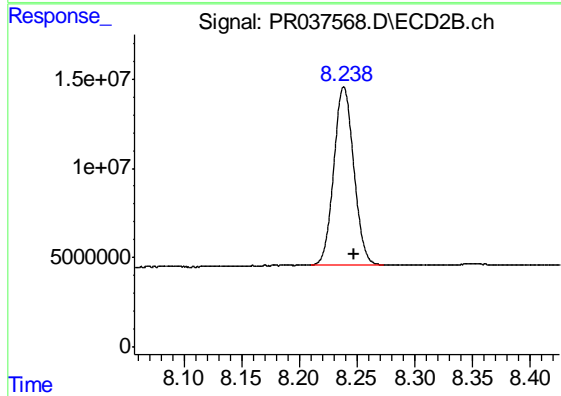
#1 Tetrachloro-m-xylene

R.T.: 3.402 min
 Delta R.T.: -0.004 min
 Response: 117948820
 Conc: 24.60 ng/ml



#2 Decachlorobiphenyl

R.T.: 9.979 min
 Delta R.T.: -0.018 min
 Response: 27706157
 Conc: 20.95 ng/ml m



#2 Decachlorobiphenyl

R.T.: 8.238 min
 Delta R.T.: -0.009 min
 Response: 120457737
 Conc: 20.68 ng/ml m