

Data Path : Z:\pestpcbsrv\HPCHEM1\ECD_R\Data\PR051419\
 Data File : PR037919.D
 Signal(s) : Signal #1: ECD1A.ch Signal #2: ECD2B.ch
 Acq On : 14 May 2019 19:17
 Operator : SM\MA
 Sample : K2842-03
 Misc :
 ALS Vial : 14 Sample Multiplier: 1

Instrument :
 ECD_R
 ClientSampleId :
 051119-LIFT-F-D-M

Integration File signal 1: autoint1.e
 Integration File signal 2: autoint2.e
 Quant Time: May 15 00:43:48 2019
 Quant Method : Z:\pestpcbsrv\HPCHEM1\ECD_R\Method\PR051119.M
 Quant Title : GC EXTRACTABLES
 QLast Update : Sun May 12 00:51:44 2019
 Response via : Initial Calibration
 Integrator: ChemStation

Volume Inj. : 2 µl
 Signal #1 Phase : ZB-MR2 Signal #2 Phase: ZB-MR2
 Signal #1 Info : 30Mx0.32mmx 0.50µ Signal #2 Info : 30M x 0.32mm x 0.25µm

Compound	RT#1	RT#2	Resp#1	Resp#2	ng/ml	ng/ml

System Monitoring Compounds						
1) SA Tetrachlo...	3.792	4.640	44586824	134.3E6	24.742	26.636
2) SA Decachlor...	8.781	10.402	43945983	98123173	23.034	21.574
Target Compounds						
3) L1 AR-1016-1	4.882	0.000	604498	0	7.753	N.D. #
4) L1 AR-1016-2	4.882	0.000	604498	0	5.608	N.D. #
5) L1 AR-1016-3	5.097	0.000	703017	0	12.395	N.D. #
6) L1 AR-1016-4	5.097	0.000	703017	0	15.382	N.D. #
8) L2 AR-1221-1	3.960	4.836	1443592	1387265	69.145	26.229 #
9) L2 AR-1221-2	4.089	4.949	1003393	2134559	63.656	55.022
10) L2 AR-1221-3	4.227	5.020	3163801	9519303	62.735	73.813
11) L3 AR-1232-1	4.089	5.020	1003393	9519303	18.214	65.918 #
12) L3 AR-1232-2	4.882	5.560	604498	6585499	8.887	83.843 #
13) L3 AR-1232-3	5.097	0.000	703017	0	19.892	N.D. #
14) L3 AR-1232-4	5.097	0.000	703017	0	22.787	N.D. #
15) L3 AR-1232-5	0.000	6.058	0	1797586	N.D.	29.822 #
16) L4 AR-1242-1	4.882	0.000	604498	0	9.962	N.D. #
17) L4 AR-1242-2	4.882	0.000	604498	0	7.256	N.D. #
18) L4 AR-1242-3	5.097	0.000	703017	0	15.809	N.D. #
19) L4 AR-1242-4	5.097	0.000	703017	0	16.404	N.D. #
20) L4 AR-1242-5	5.649	0.000	1204662	0	19.359	N.D. #
21) L5 AR-1248-1	4.882	0.000	604498	0	12.675	N.D. #
22) L5 AR-1248-2	5.097	6.058	703017	1797586	11.393	11.599
23) L5 AR-1248-3	5.097	0.000	703017	0	11.100	N.D. #
25) L5 AR-1248-5	5.649	0.000	1204662	0	14.177	N.D. #
26) L6 AR-1254-1	5.649	0.000	1204662	0	8.137	N.D. #
28) L6 AR-1254-3	0.000	7.229	0	3886033	N.D.	9.195 #
32) L7 AR-1260-2	6.507	7.684	996260	2651416	6.356	9.014 #
33) L7 AR-1260-3	6.731	0.000	1049118	0	7.935	N.D. #

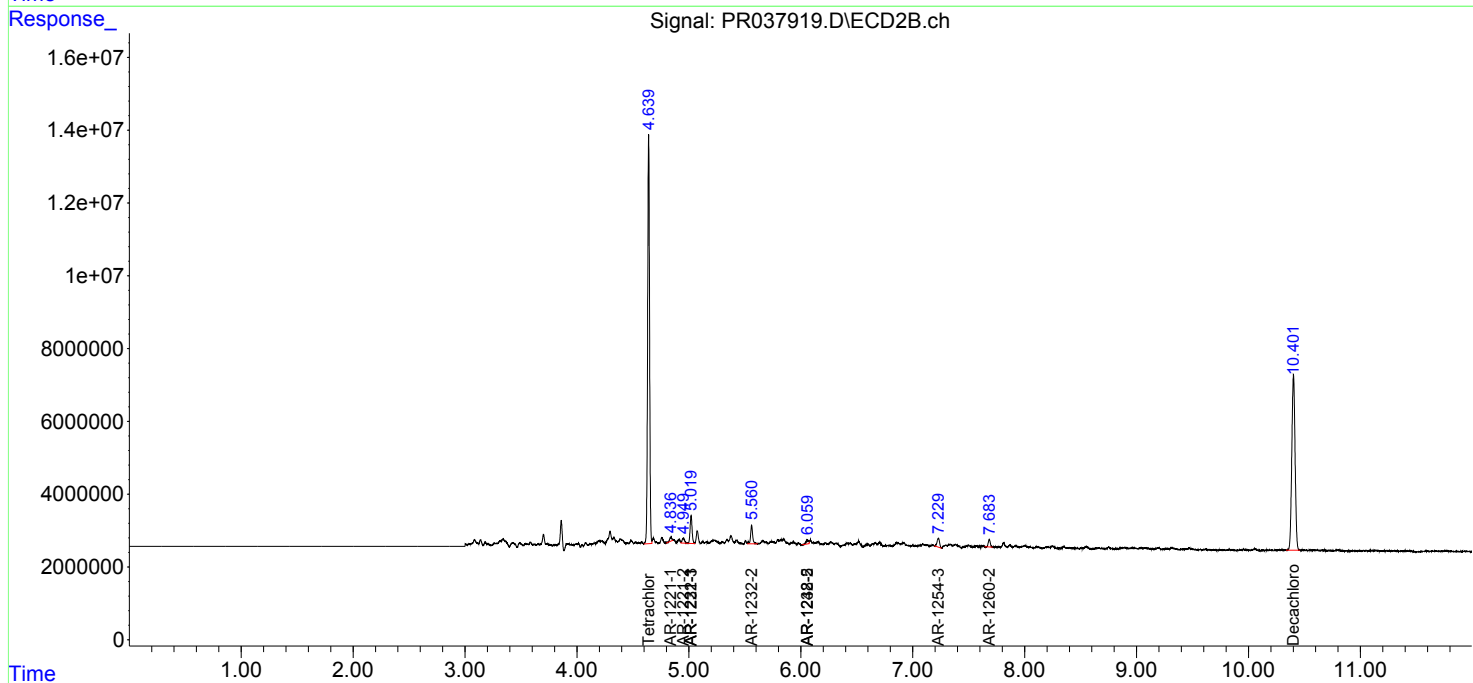
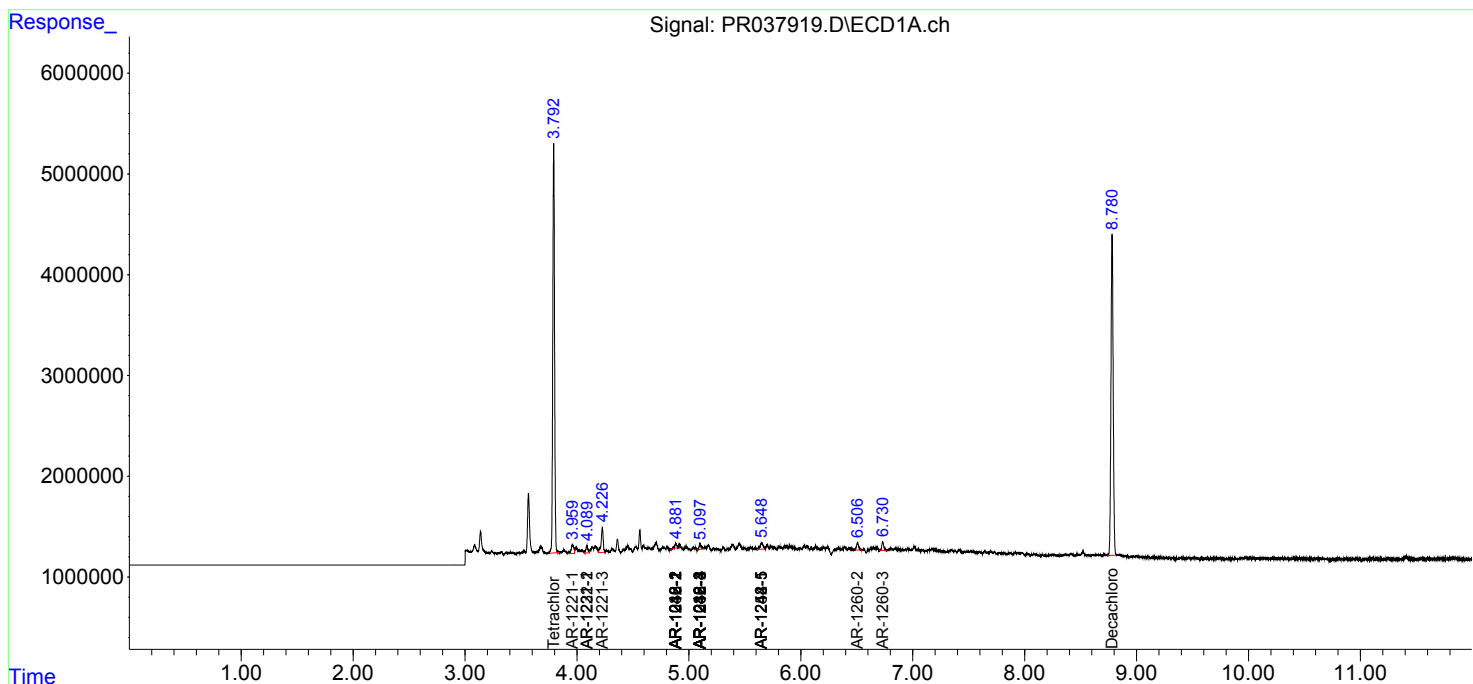
(f)=RT Delta > 1/2 Window (#)=Amounts differ by > 25% (m)=manual int.

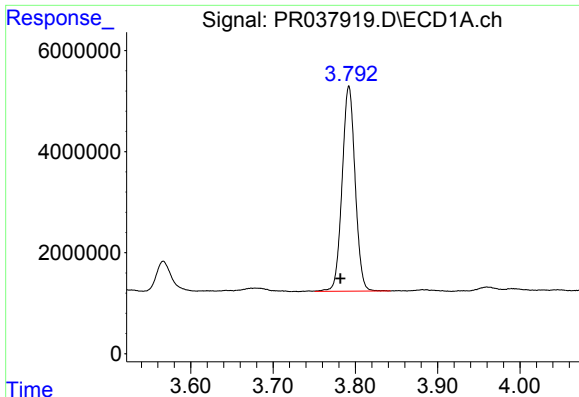
Data Path : Z:\pestpcbsrv\HPCHEM1\ECD_R\Data\PR051419\
 Data File : PR037919.D
 Signal(s) : Signal #1: ECD1A.ch Signal #2: ECD2B.ch
 Acq On : 14 May 2019 19:17
 Operator : SM\MA
 Sample : K2842-03
 Misc :
 ALS Vial : 14 Sample Multiplier: 1

Instrument :
 ECD_R
 ClientSampleId :
 051119-LIFT-F-D-M

Integration File signal 1: autoint1.e
 Integration File signal 2: autoint2.e
 Quant Time: May 15 00:43:48 2019
 Quant Method : Z:\pestpcbsrv\HPCHEM1\ECD_R\Method\PR051119.M
 Quant Title : GC EXTRACTABLES
 QLast Update : Sun May 12 00:51:44 2019
 Response via : Initial Calibration
 Integrator: ChemStation

Volume Inj. : 2 µl
 Signal #1 Phase : ZB-MR1 Signal #2 Phase: ZB-MR2
 Signal #1 Info : 30Mx0.32mmx 0.50µm Signal #2 Info : 30M x 0.32mm x 0.25µm

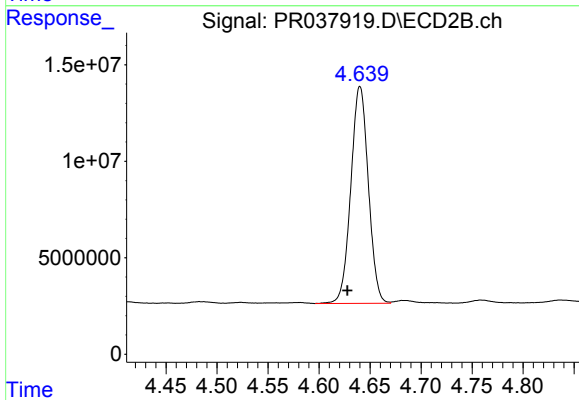




#1 Tetrachloro-m-xylene

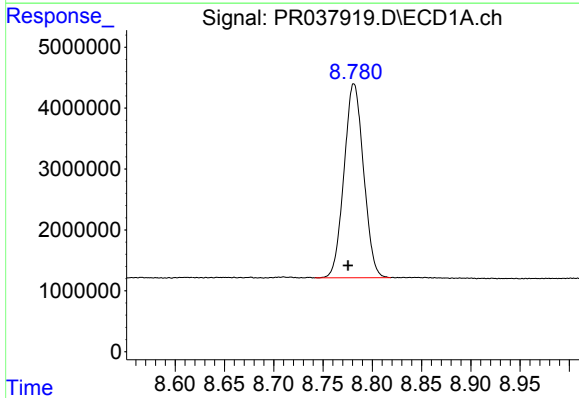
R.T.: 3.792 min
 Delta R.T.: 0.010 min
 Response: 44586824
 Conc: 24.74 ng/ml

Instrument :
 ECD_R
 ClientSampleId :
 051119-LIFT-F-D-M



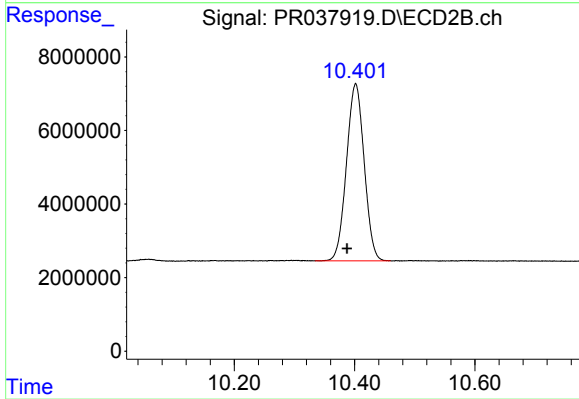
#1 Tetrachloro-m-xylene

R.T.: 4.640 min
 Delta R.T.: 0.013 min
 Response: 134319111
 Conc: 26.64 ng/ml



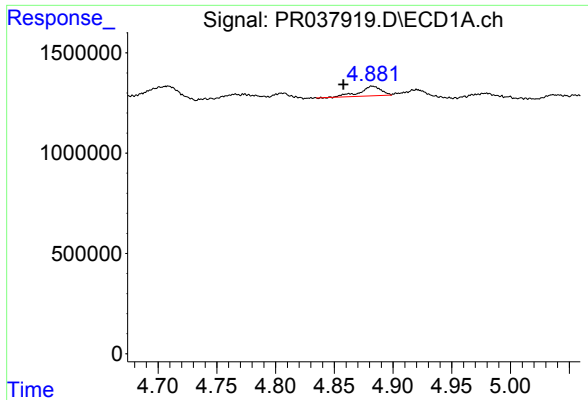
#2 Decachlorobiphenyl

R.T.: 8.781 min
 Delta R.T.: 0.006 min
 Response: 43945983
 Conc: 23.03 ng/ml



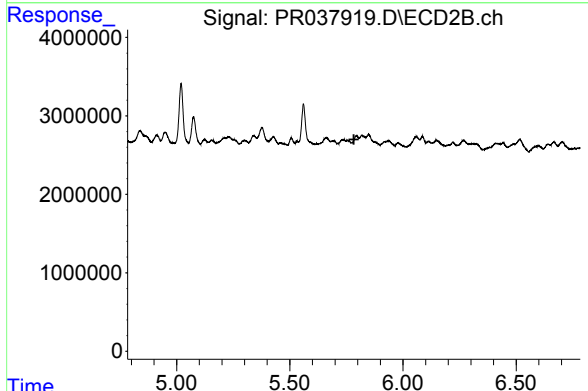
#2 Decachlorobiphenyl

R.T.: 10.402 min
 Delta R.T.: 0.014 min
 Response: 98123173
 Conc: 21.57 ng/ml

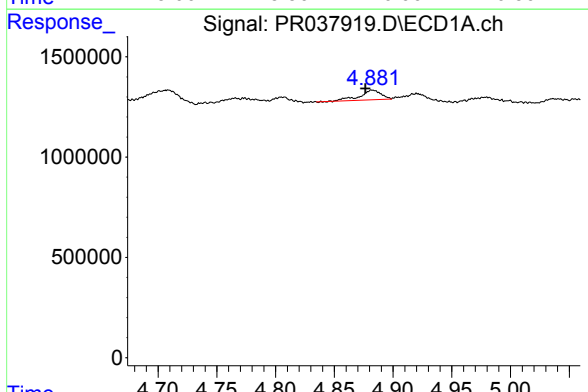


#3 AR-1016-1
 R.T.: 4.882 min
 Delta R.T.: 0.024 min
 Response: 604498
 Conc: 7.75 ng/ml

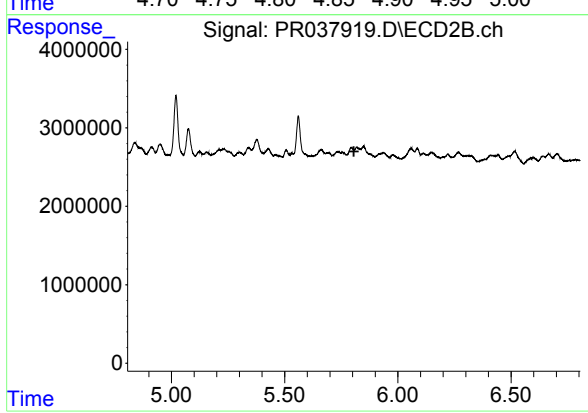
Instrument :
 ECD_R
ClientSampleId :
 051119-LIFT-F-D-M



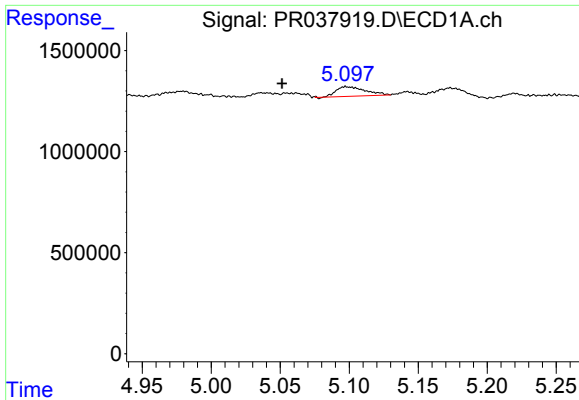
#3 AR-1016-1
 R.T.: 0.000 min
 Exp R.T. : 5.783 min
 Response: 0
 Conc: N.D.



#4 AR-1016-2
 R.T.: 4.882 min
 Delta R.T.: 0.005 min
 Response: 604498
 Conc: 5.61 ng/ml

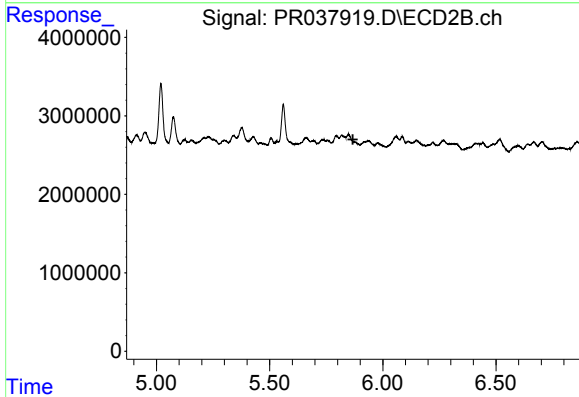


#4 AR-1016-2
 R.T.: 0.000 min
 Exp R.T. : 5.806 min
 Response: 0
 Conc: N.D.

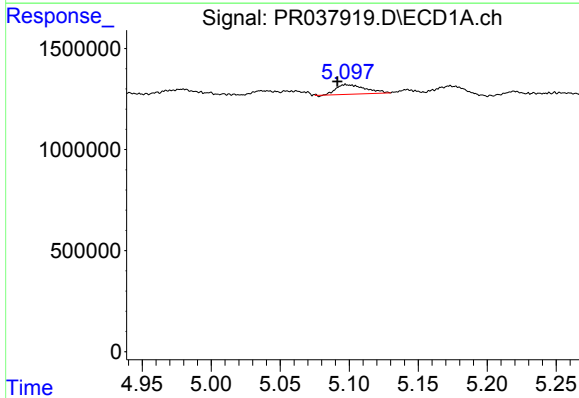


#5 AR-1016-3
 R.T.: 5.097 min
 Delta R.T.: 0.046 min
 Response: 703017
 Conc: 12.39 ng/ml

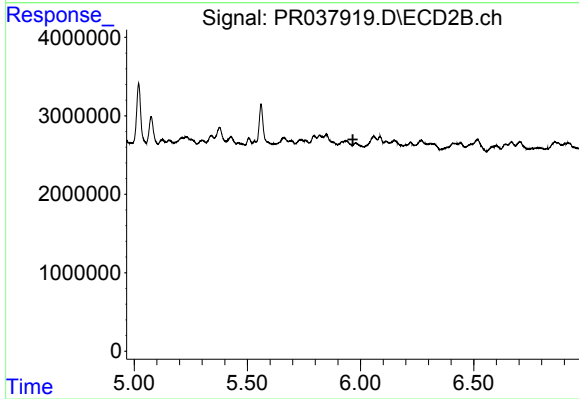
Instrument :
 ECD_R
ClientSampleId :
 051119-LIFT-F-D-M



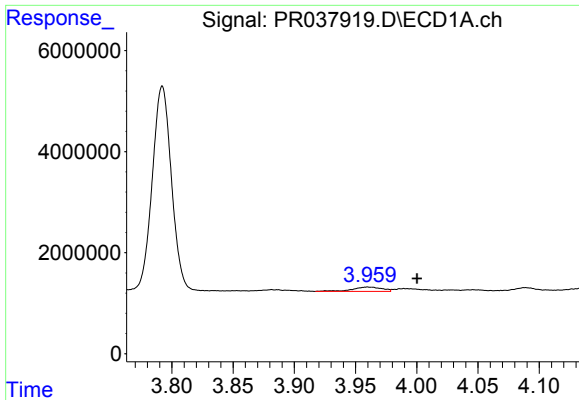
#5 AR-1016-3
 R.T.: 0.000 min
 Exp R.T. : 5.868 min
 Response: 0
 Conc: N.D.



#6 AR-1016-4
 R.T.: 5.097 min
 Delta R.T.: 0.006 min
 Response: 703017
 Conc: 15.38 ng/ml

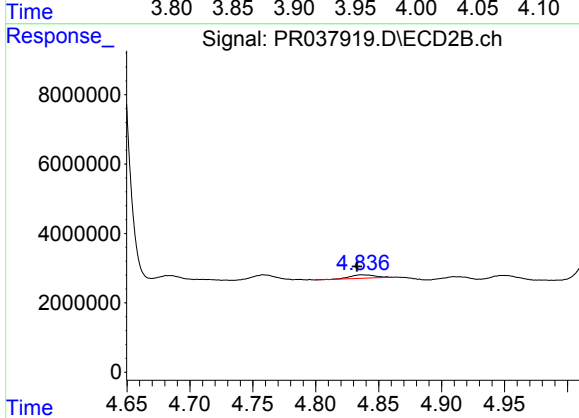


#6 AR-1016-4
 R.T.: 0.000 min
 Exp R.T. : 5.966 min
 Response: 0
 Conc: N.D.

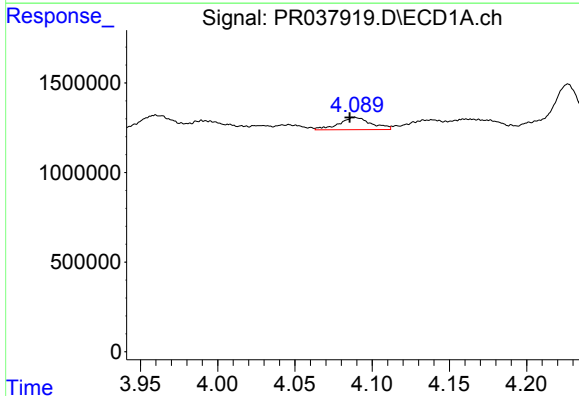


#8 AR-1221-1
 R.T.: 3.960 min
 Delta R.T.: -0.041 min
 Response: 1443592
 Conc: 69.15 ng/ml

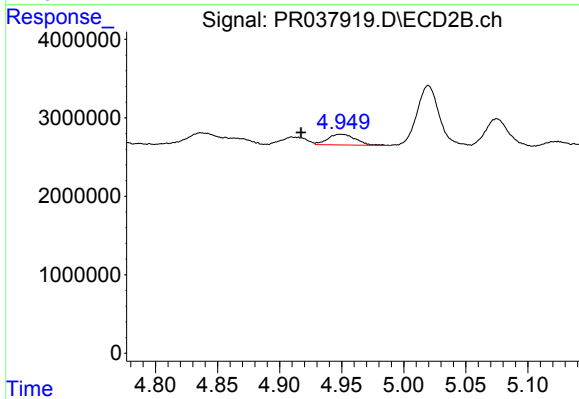
Instrument :
 ECD_R
 ClientSampleId :
 051119-LIFT-F-D-M



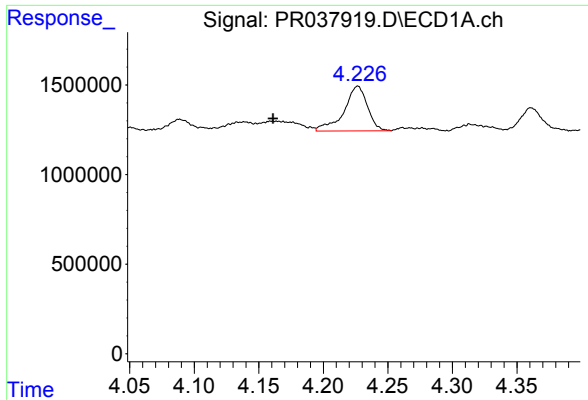
#8 AR-1221-1
 R.T.: 4.836 min
 Delta R.T.: 0.003 min
 Response: 1387265
 Conc: 26.23 ng/ml



#9 AR-1221-2
 R.T.: 4.089 min
 Delta R.T.: 0.003 min
 Response: 1003393
 Conc: 63.66 ng/ml



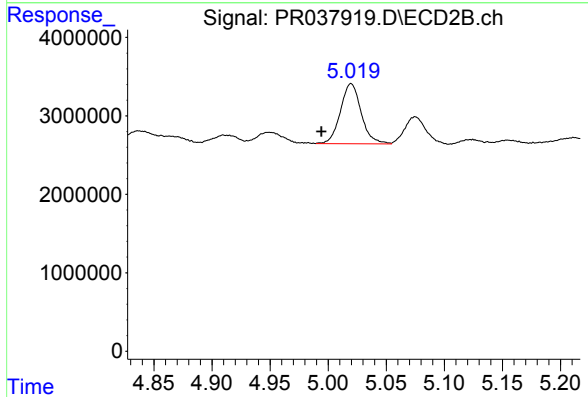
#9 AR-1221-2
 R.T.: 4.949 min
 Delta R.T.: 0.032 min
 Response: 2134559
 Conc: 55.02 ng/ml



#10 AR-1221-3

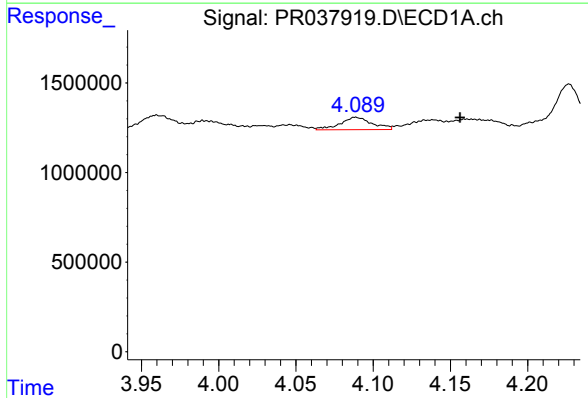
R.T.: 4.227 min
 Delta R.T.: 0.066 min
 Response: 3163801
 Conc: 62.73 ng/ml

Instrument :
 ECD_R
ClientSampleId :
 051119-LIFT-F-D-M



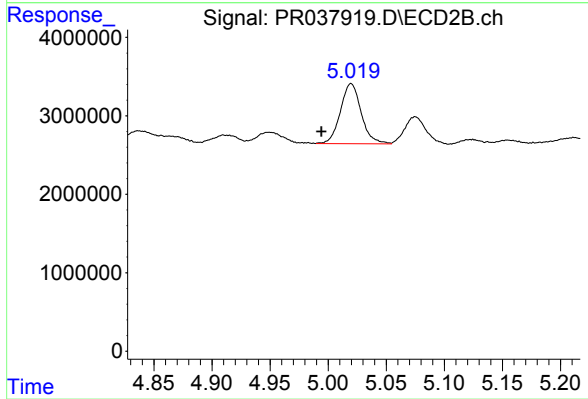
#10 AR-1221-3

R.T.: 5.020 min
 Delta R.T.: 0.026 min
 Response: 9519303
 Conc: 73.81 ng/ml



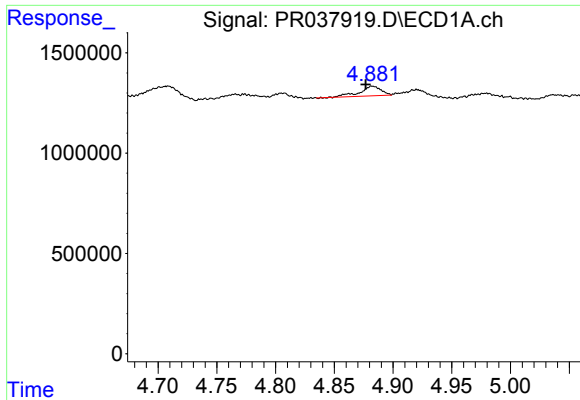
#11 AR-1232-1

R.T.: 4.089 min
 Delta R.T.: -0.068 min
 Response: 1003393
 Conc: 18.21 ng/ml



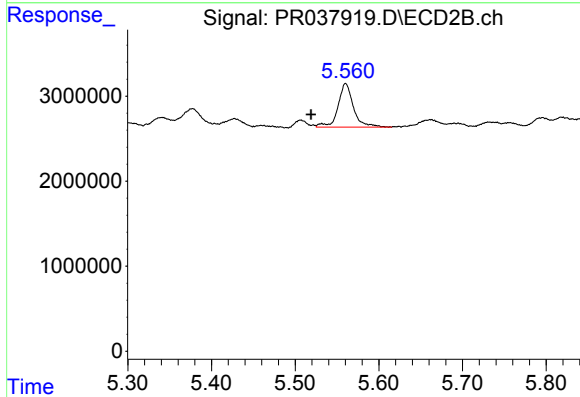
#11 AR-1232-1

R.T.: 5.020 min
 Delta R.T.: 0.025 min
 Response: 9519303
 Conc: 65.92 ng/ml

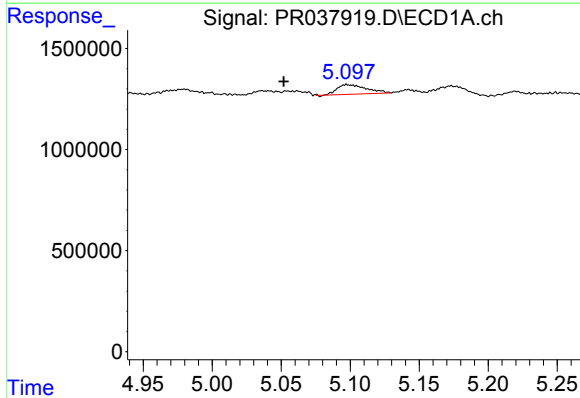


#12 AR-1232-2
 R.T.: 4.882 min
 Delta R.T.: 0.005 min
 Response: 604498
 Conc: 8.89 ng/ml

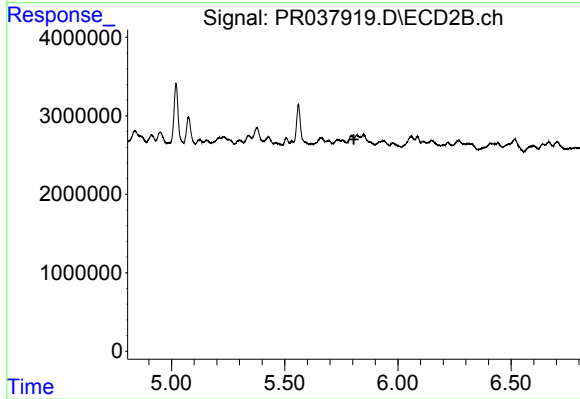
Instrument :
 ECD_R
ClientSampleId :
 051119-LIFT-F-D-M



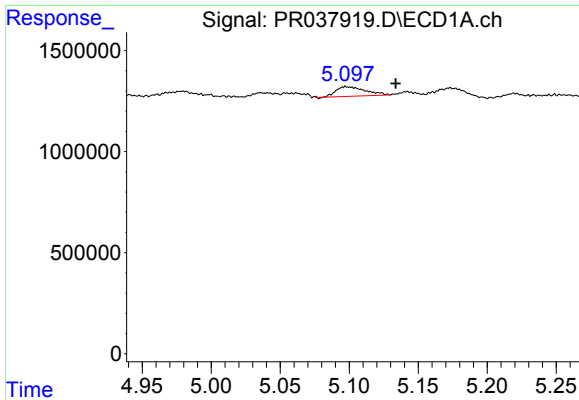
#12 AR-1232-2
 R.T.: 5.560 min
 Delta R.T.: 0.041 min
 Response: 6585499
 Conc: 83.84 ng/ml



#13 AR-1232-3
 R.T.: 5.097 min
 Delta R.T.: 0.046 min
 Response: 703017
 Conc: 19.89 ng/ml



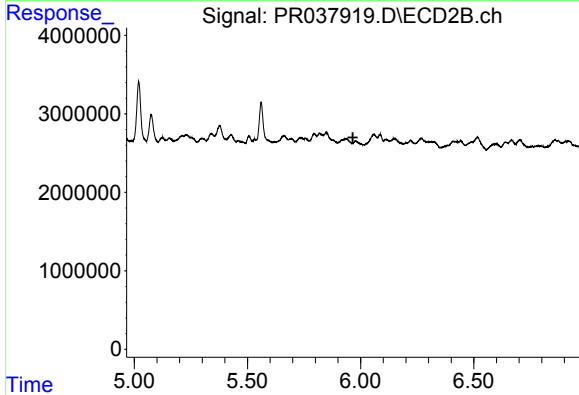
#13 AR-1232-3
 R.T.: 0.000 min
 Exp R.T. : 5.806 min
 Response: 0
 Conc: N.D.



#14 AR-1232-4

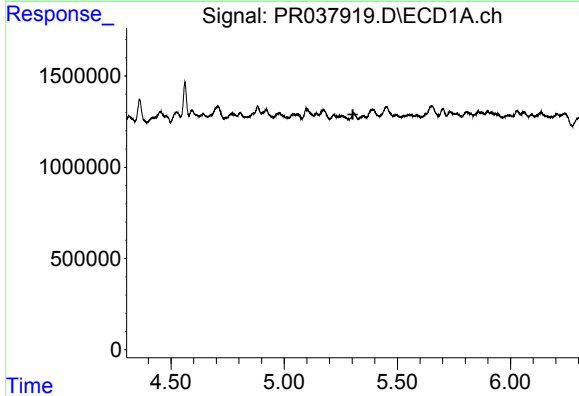
R.T.: 5.097 min
 Delta R.T.: -0.036 min
 Response: 703017
 Conc: 22.79 ng/ml

Instrument :
 ECD_R
ClientSampleId :
 051119-LIFT-F-D-M



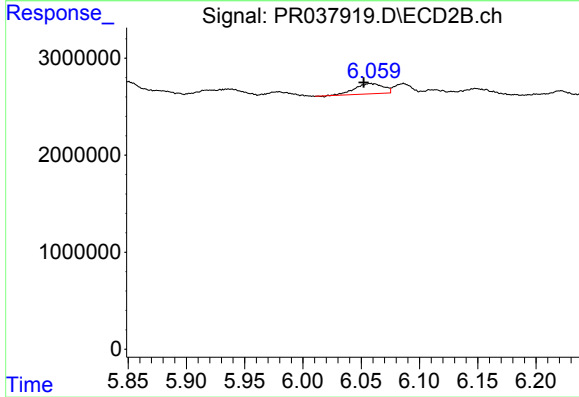
#14 AR-1232-4

R.T.: 0.000 min
 Exp R.T. : 5.966 min
 Response: 0
 Conc: N.D.



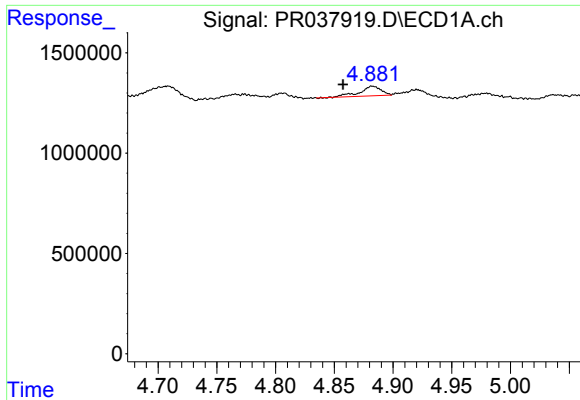
#15 AR-1232-5

R.T.: 0.000 min
 Exp R.T. : 5.304 min
 Response: 0
 Conc: N.D.



#15 AR-1232-5

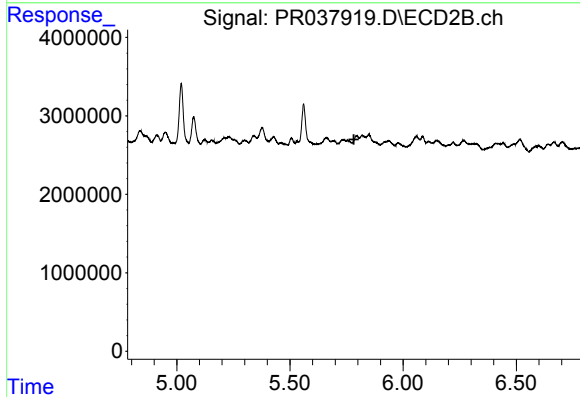
R.T.: 6.058 min
 Delta R.T.: 0.006 min
 Response: 1797586
 Conc: 29.82 ng/ml



#16 AR-1242-1

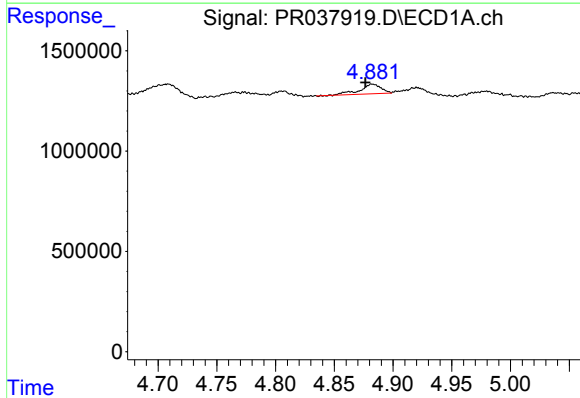
R.T.: 4.882 min
 Delta R.T.: 0.024 min
 Response: 604498
 Conc: 9.96 ng/ml

Instrument :
 ECD_R
ClientSampleId :
 051119-LIFT-F-D-M



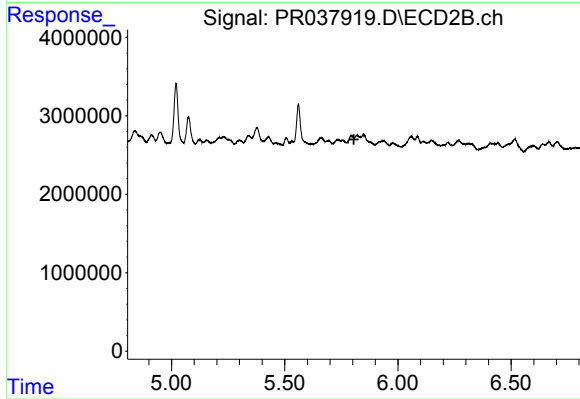
#16 AR-1242-1

R.T.: 0.000 min
 Exp R.T. : 5.782 min
 Response: 0
 Conc: N.D.



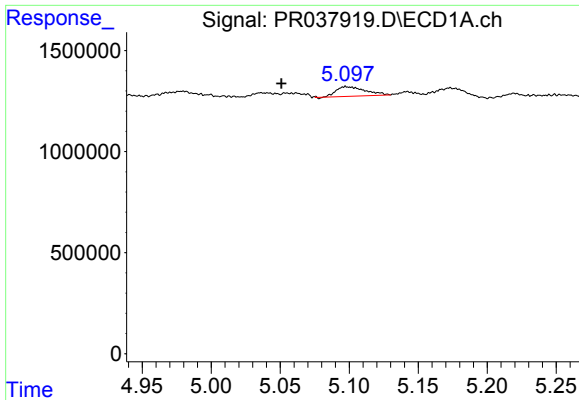
#17 AR-1242-2

R.T.: 4.882 min
 Delta R.T.: 0.005 min
 Response: 604498
 Conc: 7.26 ng/ml



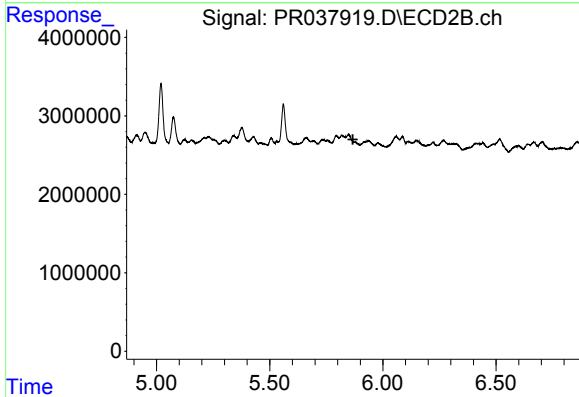
#17 AR-1242-2

R.T.: 0.000 min
 Exp R.T. : 5.805 min
 Response: 0
 Conc: N.D.

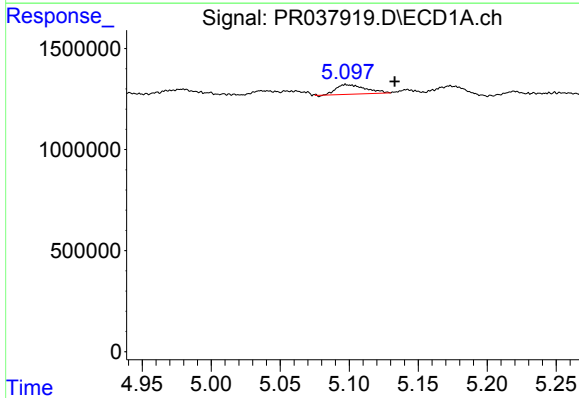


#18 AR-1242-3
 R.T.: 5.097 min
 Delta R.T.: 0.047 min
 Response: 703017
 Conc: 15.81 ng/ml

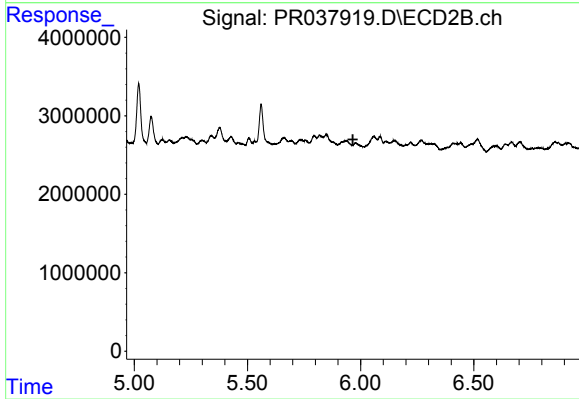
Instrument :
 ECD_R
ClientSampleId :
 051119-LIFT-F-D-M



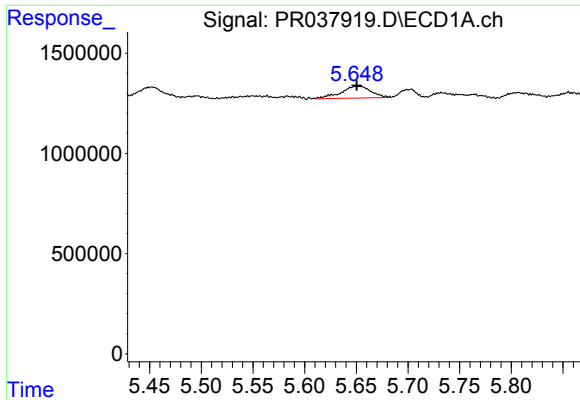
#18 AR-1242-3
 R.T.: 0.000 min
 Exp R.T. : 5.868 min
 Response: 0
 Conc: N.D.



#19 AR-1242-4
 R.T.: 5.097 min
 Delta R.T.: -0.036 min
 Response: 703017
 Conc: 16.40 ng/ml



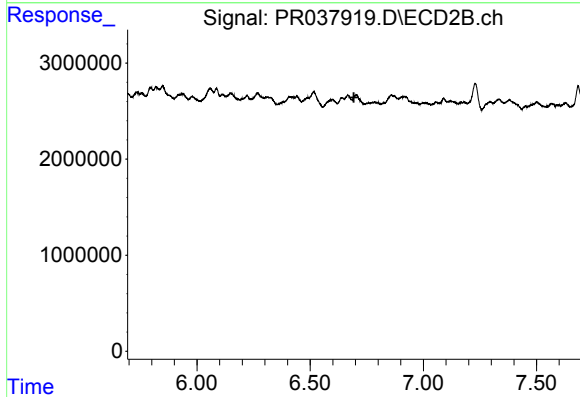
#19 AR-1242-4
 R.T.: 0.000 min
 Exp R.T. : 5.966 min
 Response: 0
 Conc: N.D.



#20 AR-1242-5

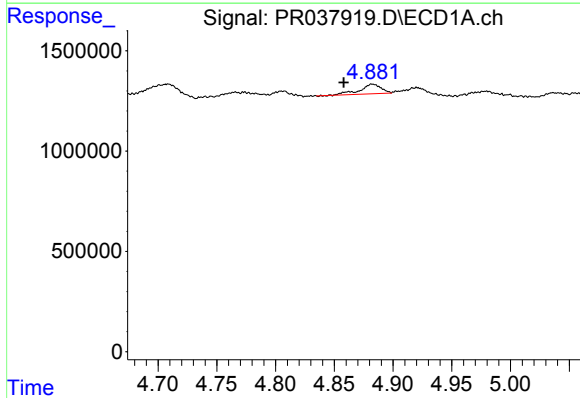
R.T.: 5.649 min
 Delta R.T.: -0.002 min
 Response: 1204662
 Conc: 19.36 ng/ml

Instrument :
 ECD_R
 ClientSampleId :
 051119-LIFT-F-D-M



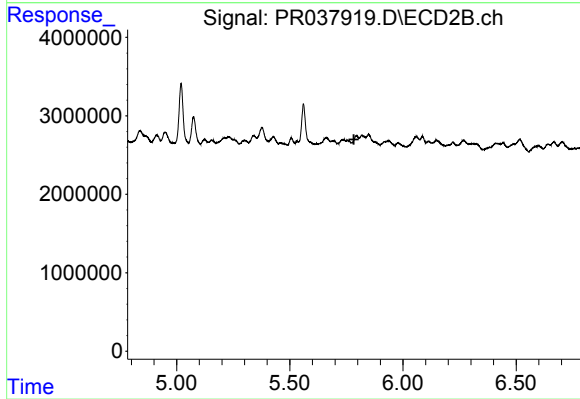
#20 AR-1242-5

R.T.: 0.000 min
 Exp R.T. : 6.693 min
 Response: 0
 Conc: N.D.



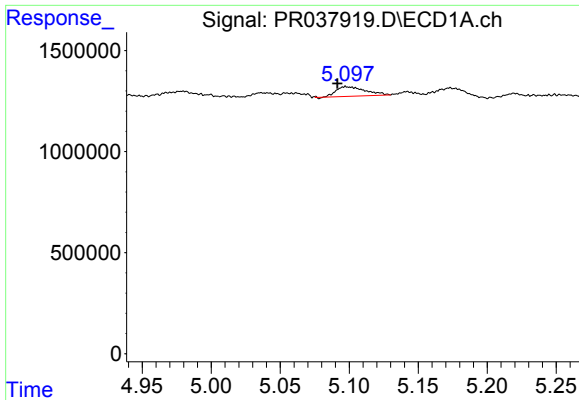
#21 AR-1248-1

R.T.: 4.882 min
 Delta R.T.: 0.024 min
 Response: 604498
 Conc: 12.67 ng/ml



#21 AR-1248-1

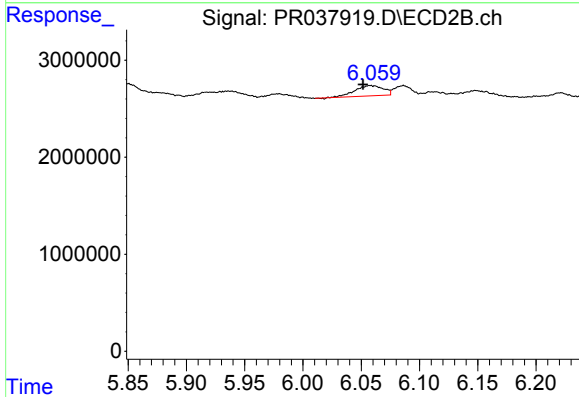
R.T.: 0.000 min
 Exp R.T. : 5.783 min
 Response: 0
 Conc: N.D.



#22 AR-1248-2

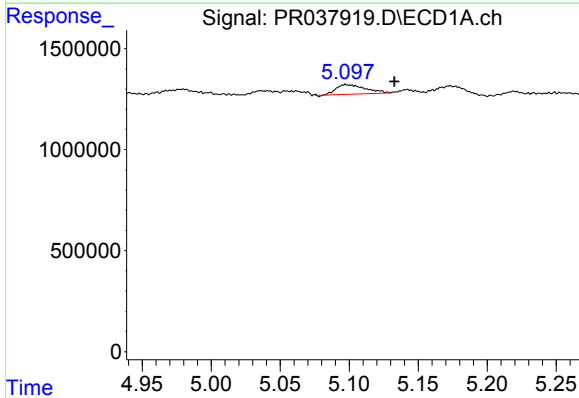
R.T.: 5.097 min
 Delta R.T.: 0.006 min
 Response: 703017
 Conc: 11.39 ng/ml

Instrument :
 ECD_R
ClientSampleId :
 051119-LIFT-F-D-M



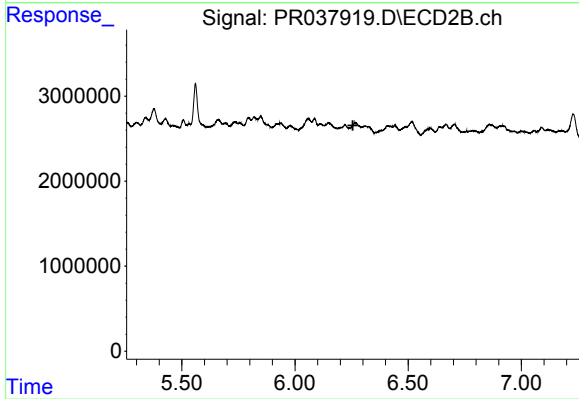
#22 AR-1248-2

R.T.: 6.058 min
 Delta R.T.: 0.006 min
 Response: 1797586
 Conc: 11.60 ng/ml



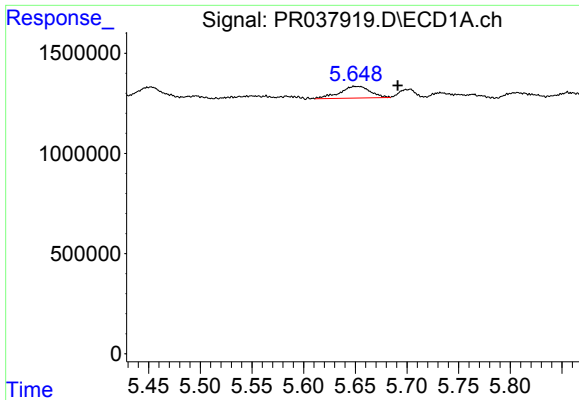
#23 AR-1248-3

R.T.: 5.097 min
 Delta R.T.: -0.035 min
 Response: 703017
 Conc: 11.10 ng/ml



#23 AR-1248-3

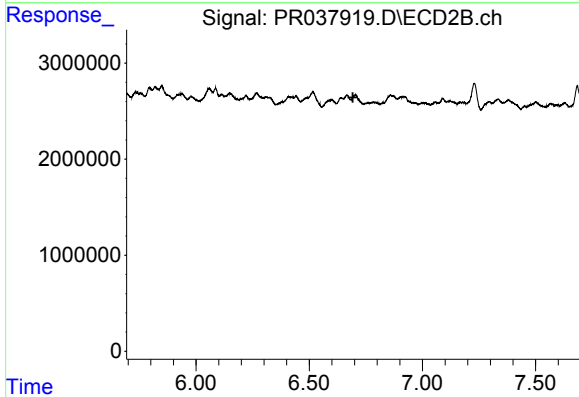
R.T.: 0.000 min
 Exp R.T. : 6.256 min
 Response: 0
 Conc: N.D.



#25 AR-1248-5

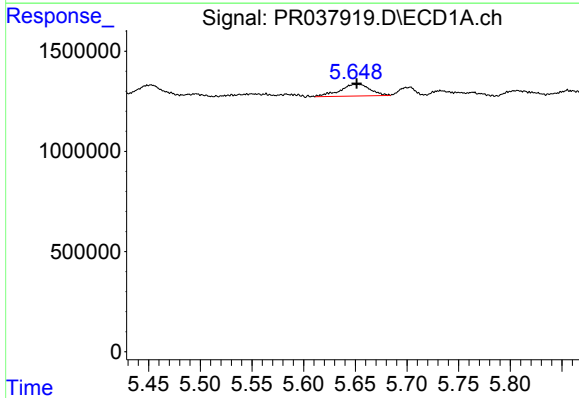
R.T.: 5.649 min
 Delta R.T.: -0.042 min
 Response: 1204662
 Conc: 14.18 ng/ml

Instrument :
 ECD_R
ClientSampleId :
 051119-LIFT-F-D-M



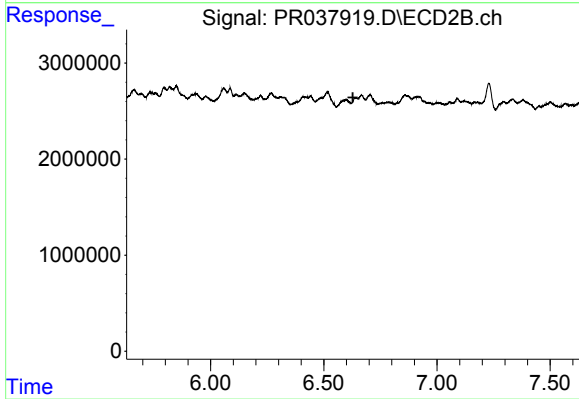
#25 AR-1248-5

R.T.: 0.000 min
 Exp R.T. : 6.693 min
 Response: 0
 Conc: N.D.



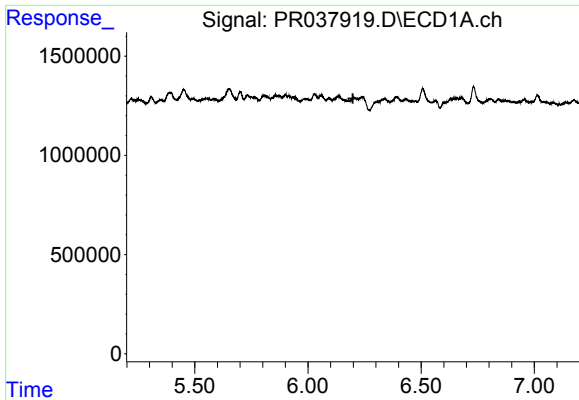
#26 AR-1254-1

R.T.: 5.649 min
 Delta R.T.: -0.003 min
 Response: 1204662
 Conc: 8.14 ng/ml



#26 AR-1254-1

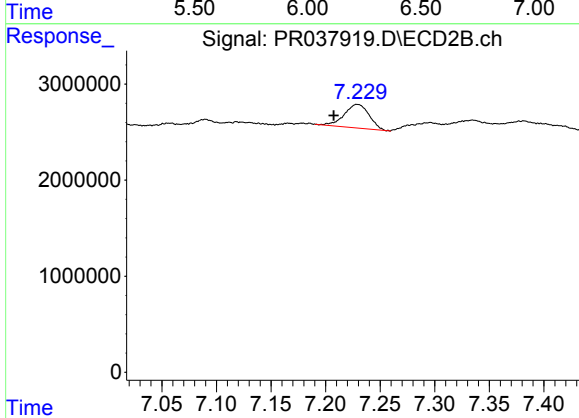
R.T.: 0.000 min
 Exp R.T. : 6.629 min
 Response: 0
 Conc: N.D.



#28 AR-1254-3

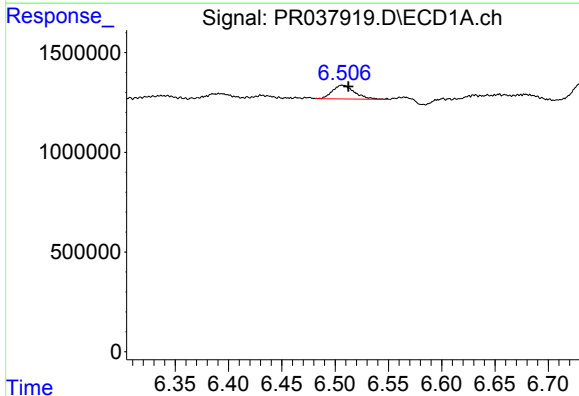
R.T.: 0.000 min
 Exp R.T.: 6.199 min
 Response: 0
 Conc: N.D.

Instrument :
 ECD_R
ClientSampleId :
 051119-LIFT-F-D-M



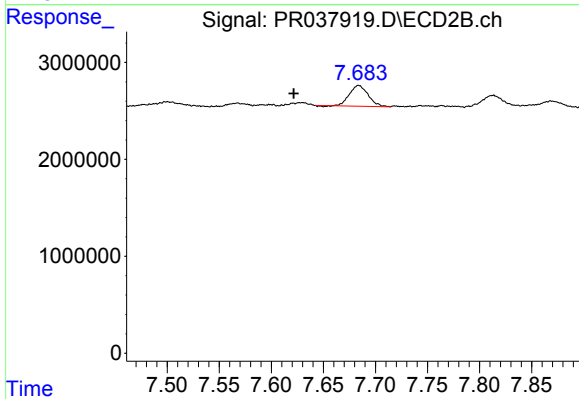
#28 AR-1254-3

R.T.: 7.229 min
 Delta R.T.: 0.021 min
 Response: 3886033
 Conc: 9.20 ng/ml



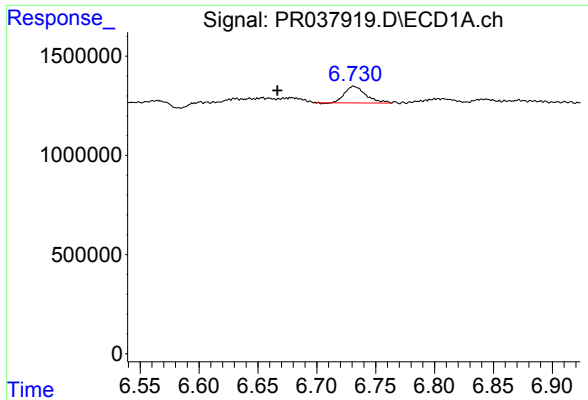
#32 AR-1260-2

R.T.: 6.507 min
 Delta R.T.: -0.006 min
 Response: 996260
 Conc: 6.36 ng/ml



#32 AR-1260-2

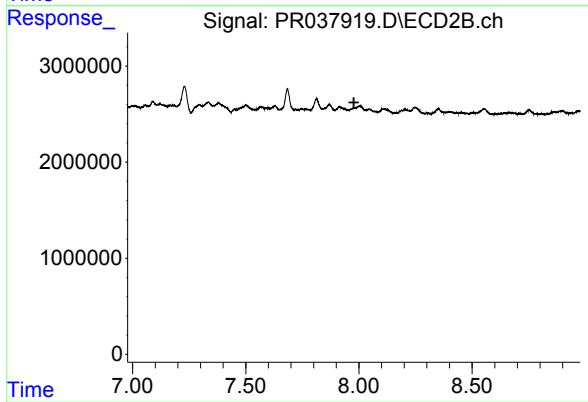
R.T.: 7.684 min
 Delta R.T.: 0.062 min
 Response: 2651416
 Conc: 9.01 ng/ml



#33 AR-1260-3

R.T.: 6.731 min
Delta R.T.: 0.065 min
Response: 1049118
Conc: 7.94 ng/ml

Instrument :
ECD_R
ClientSampleId :
051119-LIFT-F-D-M



#33 AR-1260-3

R.T.: 0.000 min
Exp R.T. : 7.978 min
Response: 0
Conc: N.D.