

Data Path : Z:\pestpcbsrv\HPCHEM1\ECD_R\Data\PR051620\
 Data File : PR045298.D
 Signal(s) : Signal #1: ECD1A.ch Signal #2: ECD2B.ch
 Acq On : 15 May 2020 07:47
 Operator : AJ\MA
 Sample : I.BLK
 Misc :
 ALS Vial : 2 Sample Multiplier: 1

Instrument :
 ECD_R
ClientSampled :
 I.BLK

Manual Integrations
APPROVED
 Sohil
 5/18/2020 3:36:12 PM

Integration File signal 1: autoint1.e
 Integration File signal 2: autoint2.e
 Quant Time: May 15 22:59:39 2020
 Quant Method : Z:\pestpcbsrv\HPCHEM1\ECD_R\Method\PR051520.M
 Quant Title : GC EXTRACTABLES
 QLast Update : Thu May 14 17:15:31 2020
 Response via : Initial Calibration
 Integrator: ChemStation

Volume Inj. : 2 µl
 Signal #1 Phase : ZB-MR1 Signal #2 Phase: ZB-MR2
 Signal #1 Info : 30Mx0.32mmx 0.50µ Signal #2 Info : 30M x 0.32mm x 0.25µm

Compound	RT#1	RT#2	Resp#1	Resp#2	ng/ml	ng/ml

System Monitoring Compounds						
1) SA Tetrachlo...	4.817	4.039	38378759	269.3E6	19.378m	19.532m
2) SA Decachlor...	10.871	9.202	46863710	240.4E6	23.349m	20.383m

Target Compounds

(f)=RT Delta > 1/2 Window (#)=Amounts differ by > 25% (m)=manual int.

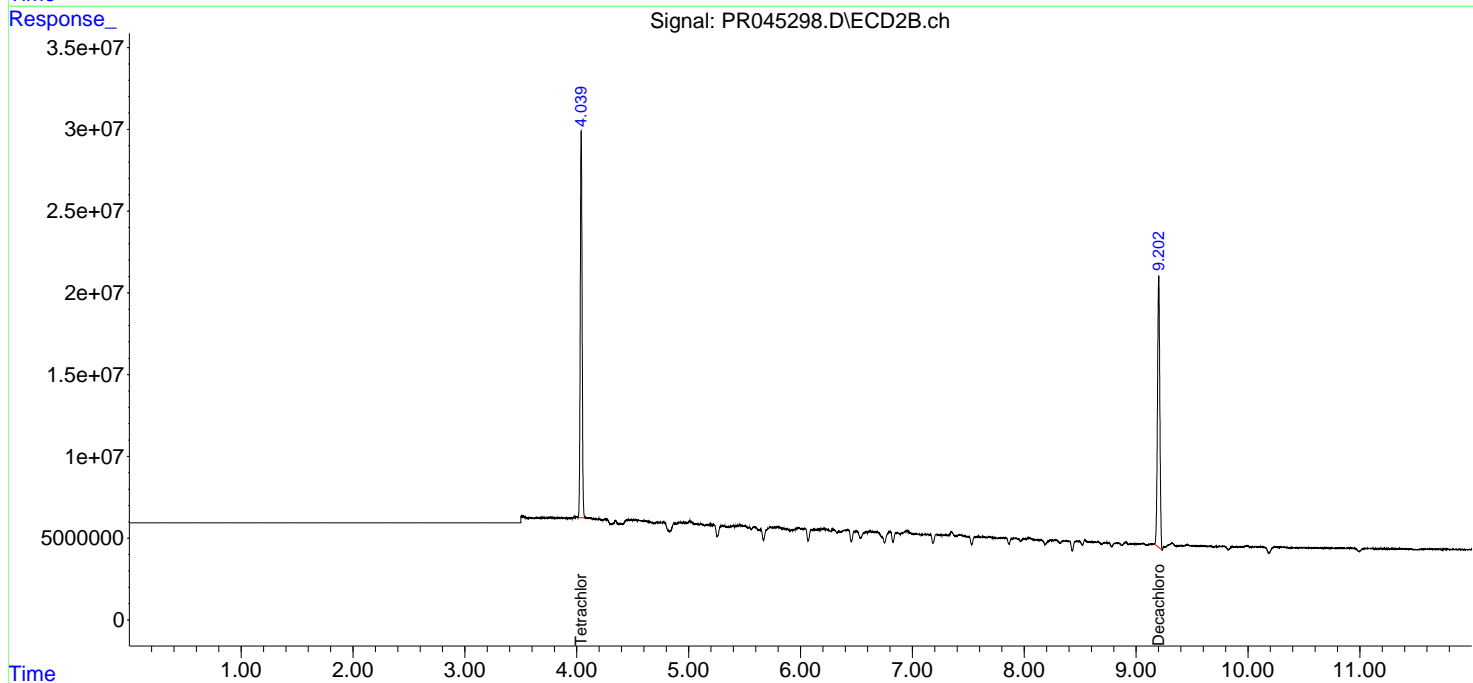
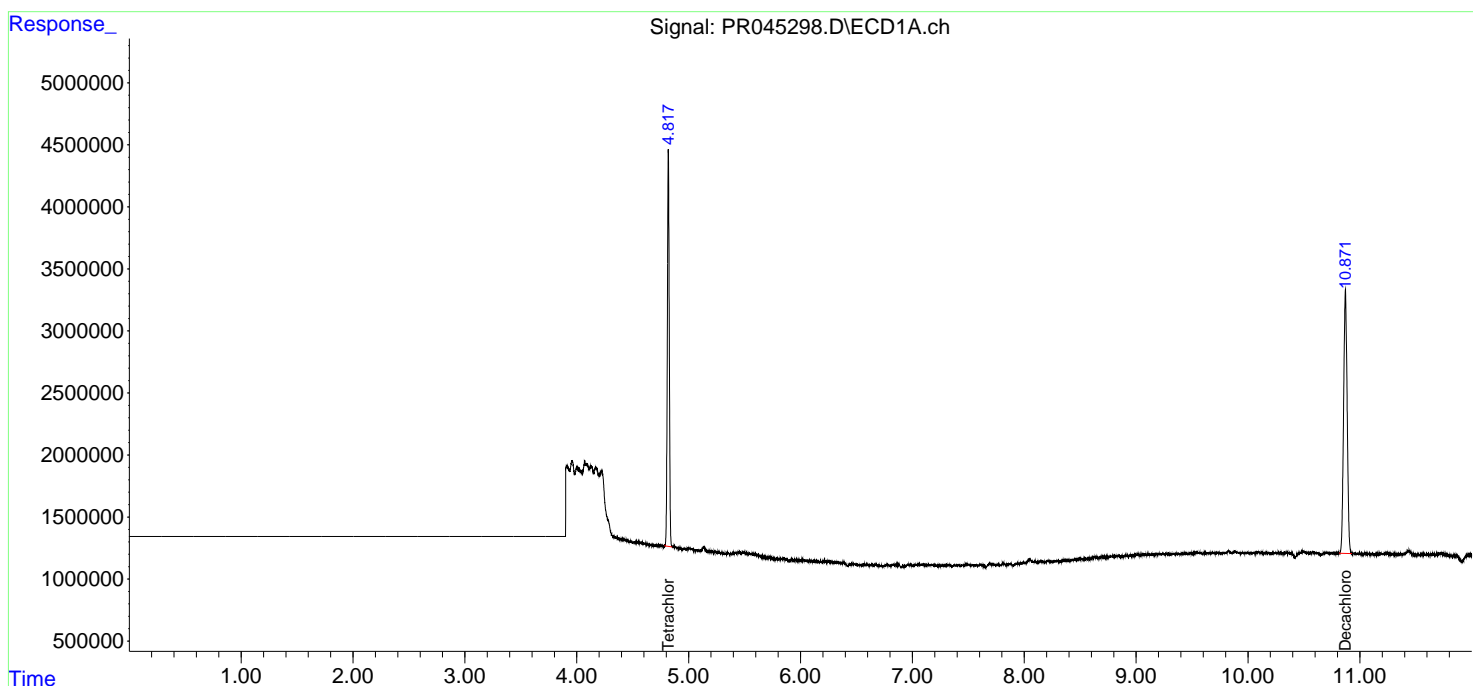
Data Path : Z:\pestpcbsrv\HPCHEM1\ECD_R\Data\PR051620\
 Data File : PR045298.D
 Signal(s) : Signal #1: ECD1A.ch Signal #2: ECD2B.ch
 Acq On : 15 May 2020 07:47
 Operator : AJ\MA
 Sample : I.BLK
 Misc :
 ALS Vial : 2 Sample Multiplier: 1

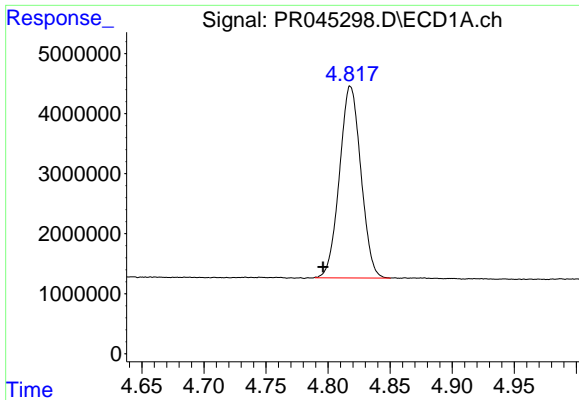
Instrument :
 ECD_R
ClientSampled :
 I.BLK

Manual Integrations
APPROVED
 Sohil
 5/18/2020 3:36:12 PM

Integration File signal 1: autoint1.e
 Integration File signal 2: autoint2.e
 Quant Time: May 15 22:59:39 2020
 Quant Method : Z:\pestpcbsrv\HPCHEM1\ECD_R\Method\PR051520.M
 Quant Title : GC EXTRACTABLES
 QLast Update : Thu May 14 17:15:31 2020
 Response via : Initial Calibration
 Integrator: ChemStation

Volume Inj. : 2 µl
 Signal #1 Phase : ZB-MR1 Signal #2 Phase: ZB-MR2
 Signal #1 Info : 30Mx0.32mmx 0.50µ Signal #2 Info : 30M x 0.32mm x 0.25µm

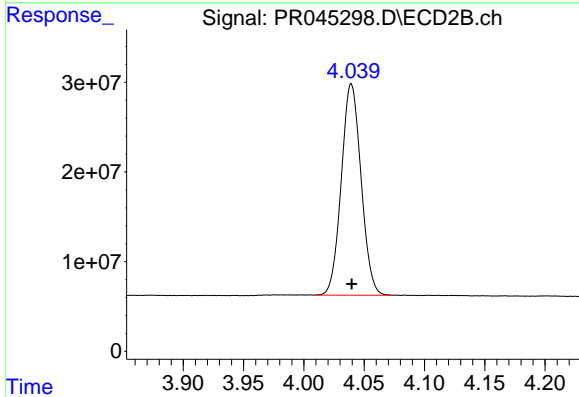




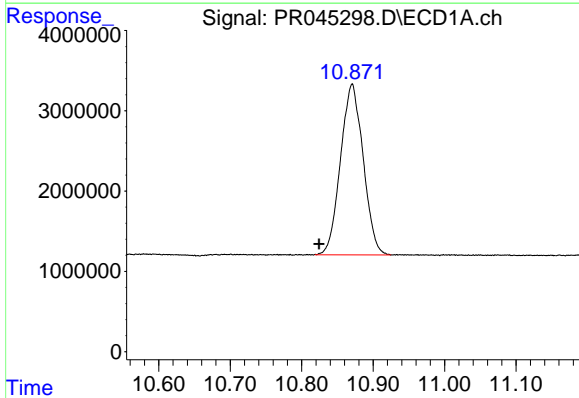
#1 Tetrachloro-m-xylene
 R.T.: 4.817 min
 Delta R.T.: 0.021 min
 Response: 38378759
 Conc: 19.38 ng/ml m

Instrument :
 ECD_R
 ClientSampled :
 I.BLK

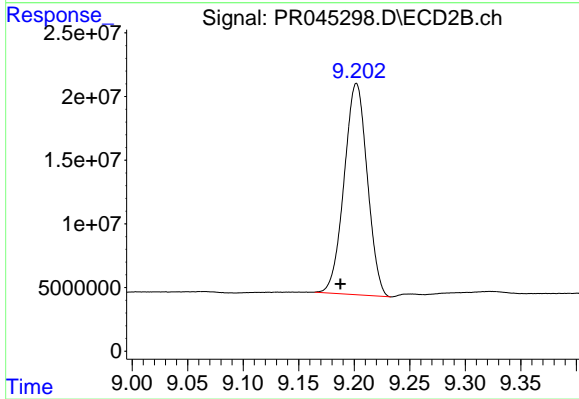
Manual Integrations
 APPROVED
 Sohil
 5/18/2020 3:36:12 PM



#1 Tetrachloro-m-xylene
 R.T.: 4.039 min
 Delta R.T.: 0.000 min
 Response: 269321206
 Conc: 19.53 ng/ml m



#2 Decachlorobiphenyl
 R.T.: 10.871 min
 Delta R.T.: 0.047 min
 Response: 46863710
 Conc: 23.35 ng/ml m



#2 Decachlorobiphenyl
 R.T.: 9.202 min
 Delta R.T.: 0.014 min
 Response: 240428490
 Conc: 20.38 ng/ml m