

Data Path : Z:\pestpcbsrv\HPCHEM1\ECD\_R\Data\PR051620\  
 Data File : PR045299.D  
 Signal(s) : Signal #1: ECD1A.ch Signal #2: ECD2B.ch  
 Acq On : 15 May 2020 08:01  
 Operator : AJ\MA  
 Sample : AR1660CCC500  
 Misc :  
 ALS Vial : 3 Sample Multiplier: 1

Instrument :  
 ECD\_R  
 ClientSampleId :  
 AR1660CCC500

Integration File signal 1: autoint1.e  
 Integration File signal 2: autoint2.e  
 Quant Time: May 15 23:00:02 2020  
 Quant Method : Z:\pestpcbsrv\HPCHEM1\ECD\_R\Method\PR051520.M  
 Quant Title : GC EXTRACTABLES  
 QLast Update : Thu May 14 17:15:31 2020  
 Response via : Initial Calibration  
 Integrator: ChemStation

Volume Inj. : 2 µl  
 Signal #1 Phase : ZB-MR1 Signal #2 Phase: ZB-MR2  
 Signal #1 Info : 30Mx0.32mmx 0.50µ Signal #2 Info : 30M x 0.32mm x 0.25µm

Compound	RT#1	RT#2	Resp#1	Resp#2	ng/ml	ng/ml
-----						
System Monitoring Compounds						
1) SA Tetrachlo...	4.801	4.041	85459438	606.2E6	43.150	43.965
2) SA Decachlor...	10.831	9.189	100.9E6	589.5E6	50.268	49.978
Target Compounds						
3) L1 AR-1016-1	5.991	5.143	30711373	217.1E6	424.421	439.679
4) L1 AR-1016-2	6.015	5.163	42986227	295.4E6	426.725	446.611
5) L1 AR-1016-3	6.078	5.343	26062356	156.6E6	418.427	442.372
6) L1 AR-1016-4	6.179	5.382	21757061	122.5E6	418.578	434.656
7) L1 AR-1016-5	6.475	5.600	21754533	161.4E6	416.724	442.391
31) L7 AR-1260-1	7.604	6.643	38820984	280.8E6	419.717	440.729
32) L7 AR-1260-2	7.861	6.828	48412262	342.4E6	431.140	451.796
33) L7 AR-1260-3	8.226	6.986	38252709	321.3E6	437.921	448.895
34) L7 AR-1260-4	8.473	7.461	43550921	270.9E6	422.410	452.561
35) L7 AR-1260-5	8.822	7.700	94449807	678.3E6	456.270	470.044

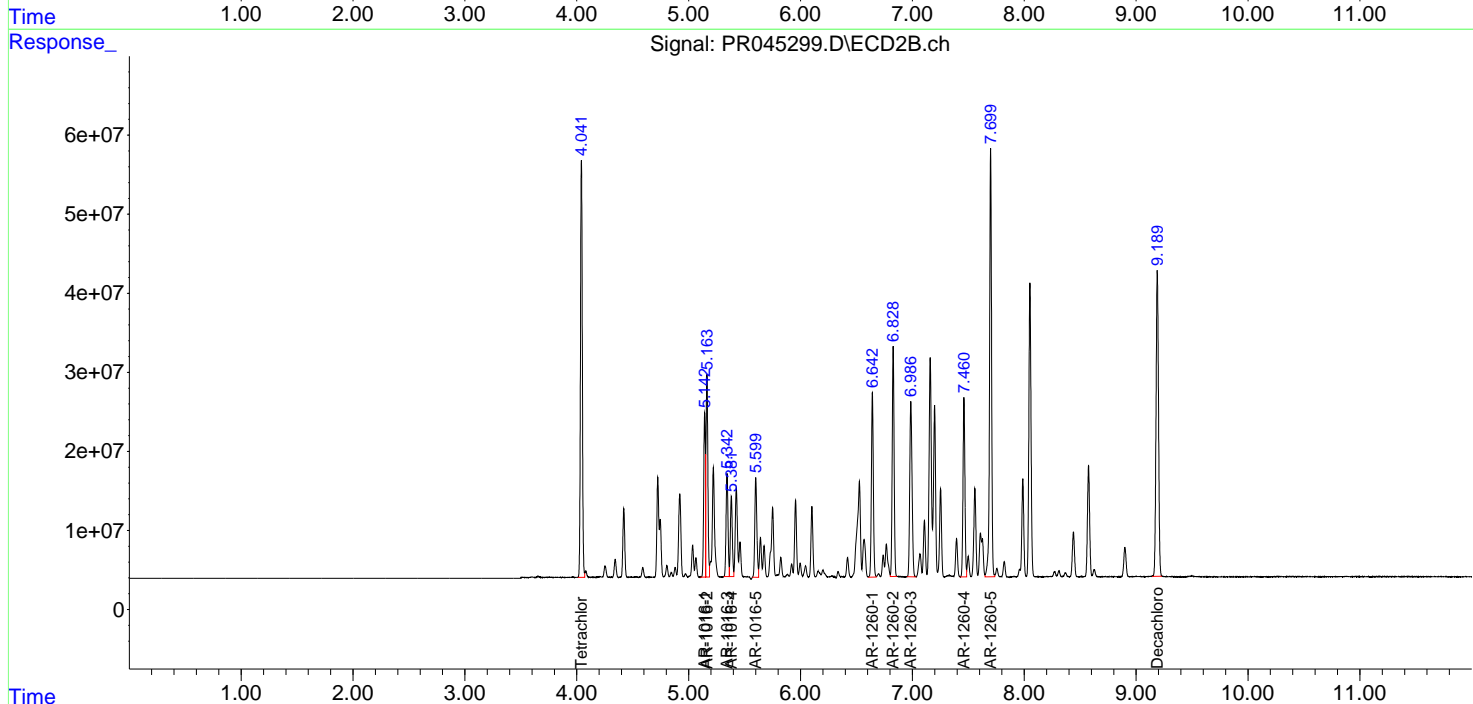
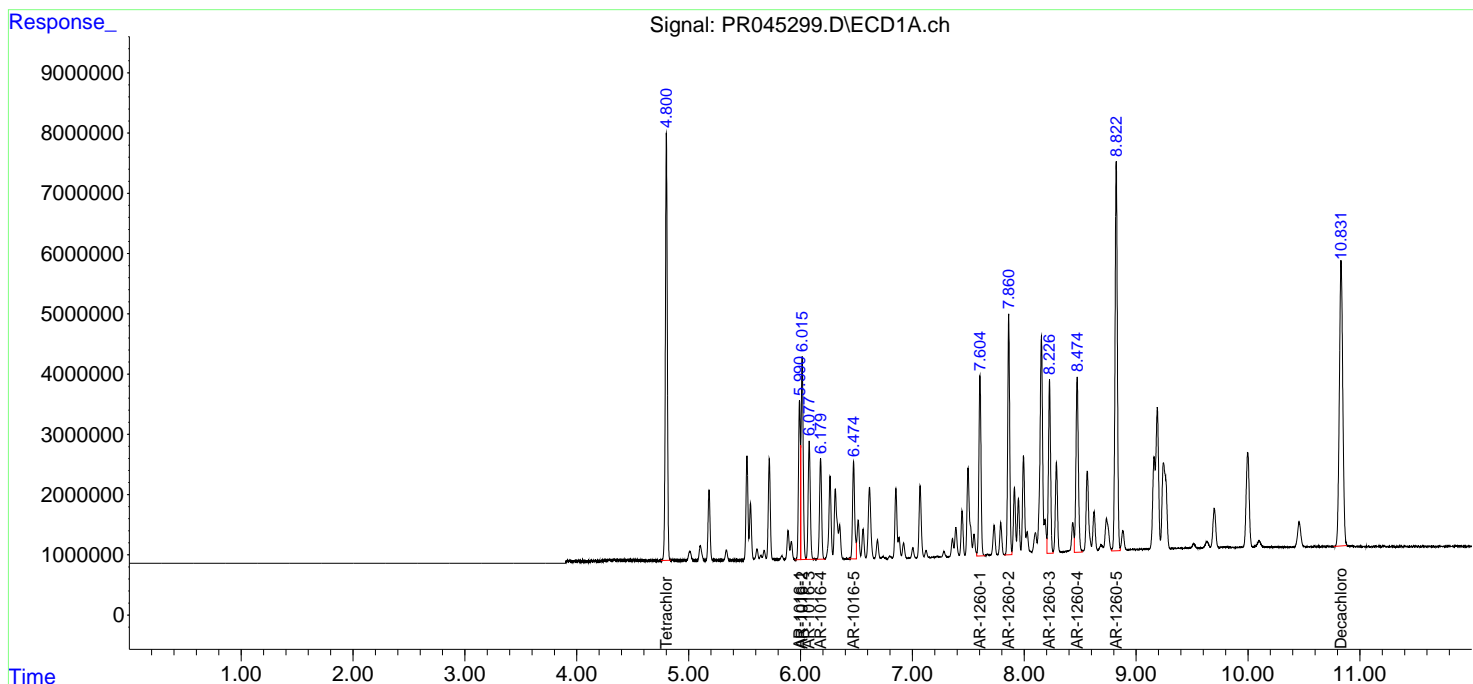
(f)=RT Delta > 1/2 Window (#)=Amounts differ by > 25% (m)=manual int.

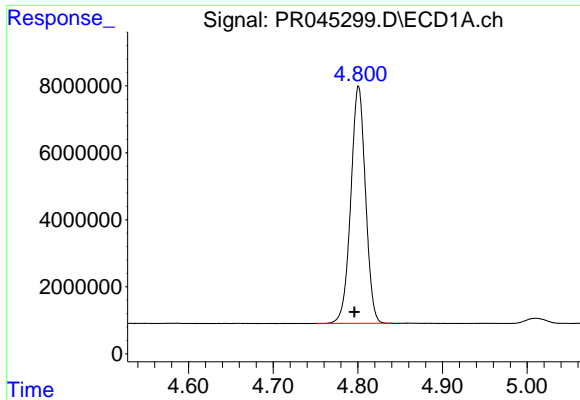
Data Path : Z:\pestpcbsrv\HPCHEM1\ECD\_R\Data\PR051620\  
 Data File : PR045299.D  
 Signal(s) : Signal #1: ECD1A.ch Signal #2: ECD2B.ch  
 Acq On : 15 May 2020 08:01  
 Operator : AJ\MA  
 Sample : AR1660CCC500  
 Misc :  
 ALS Vial : 3 Sample Multiplier: 1

Instrument :  
 ECD\_R  
 ClientSampled :  
 AR1660CCC500

Integration File signal 1: autoint1.e  
 Integration File signal 2: autoint2.e  
 Quant Time: May 15 23:00:02 2020  
 Quant Method : Z:\pestpcbsrv\HPCHEM1\ECD\_R\Method\PR051520.M  
 Quant Title : GC EXTRACTABLES  
 QLast Update : Thu May 14 17:15:31 2020  
 Response via : Initial Calibration  
 Integrator: ChemStation

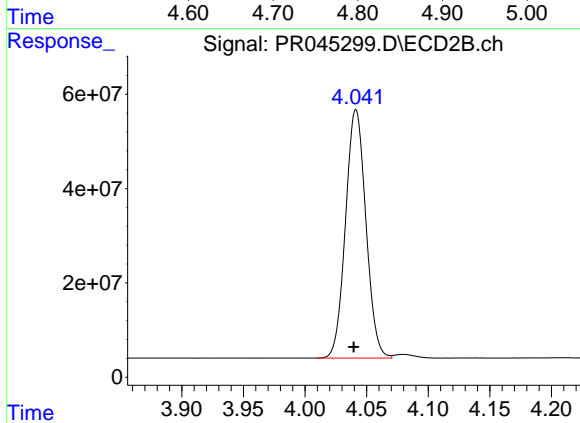
Volume Inj. : 2 µl  
 Signal #1 Phase : ZB-MR1 Signal #2 Phase: ZB-MR2  
 Signal #1 Info : 30Mx0.32mmx 0.50µ Signal #2 Info : 30M x 0.32mm x 0.25µm



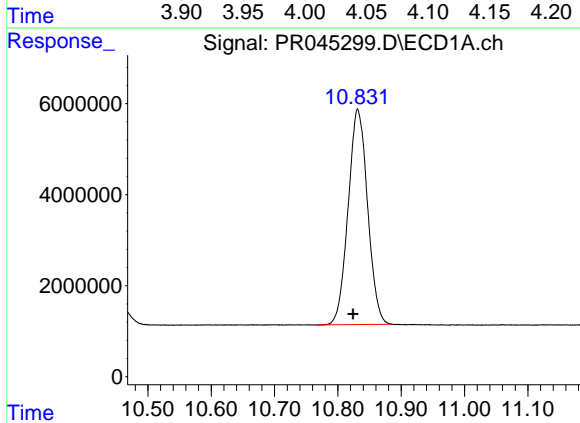


#1 Tetrachloro-m-xylene  
R.T.: 4.801 min  
Delta R.T.: 0.005 min  
Response: 85459438  
Conc: 43.15 ng/ml

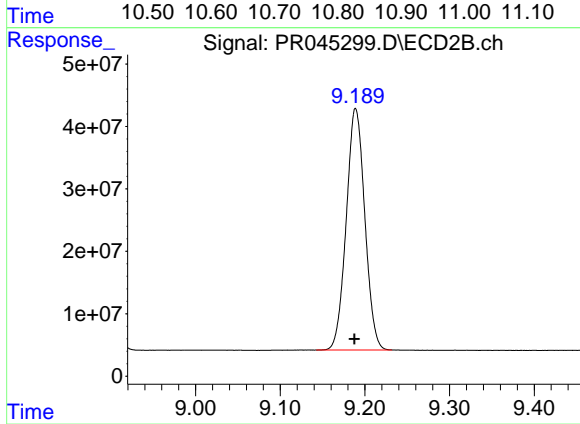
Instrument :  
ECD\_R  
ClientSampleId :  
AR1660CCC500



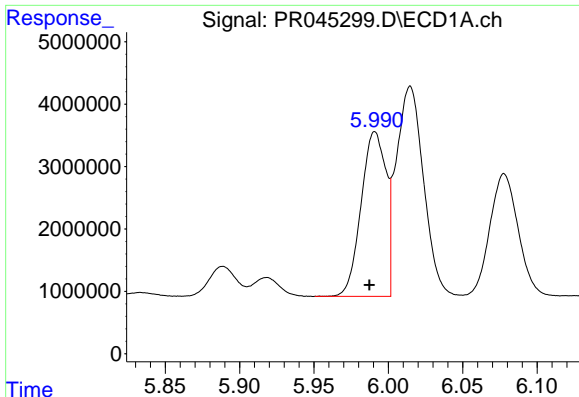
#1 Tetrachloro-m-xylene  
R.T.: 4.041 min  
Delta R.T.: 0.002 min  
Response: 606217327  
Conc: 43.97 ng/ml



#2 Decachlorobiphenyl  
R.T.: 10.831 min  
Delta R.T.: 0.007 min  
Response: 100893779  
Conc: 50.27 ng/ml



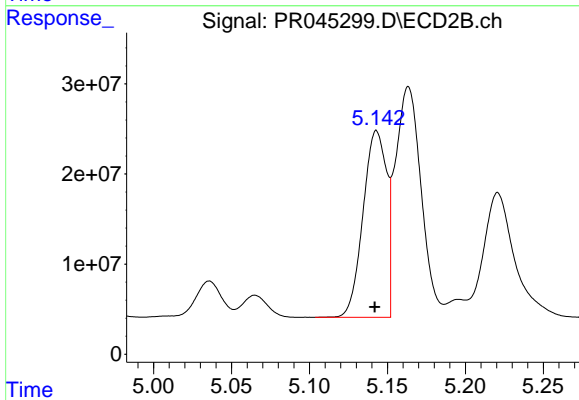
#2 Decachlorobiphenyl  
R.T.: 9.189 min  
Delta R.T.: 0.001 min  
Response: 589508373  
Conc: 49.98 ng/ml



#3 AR-1016-1

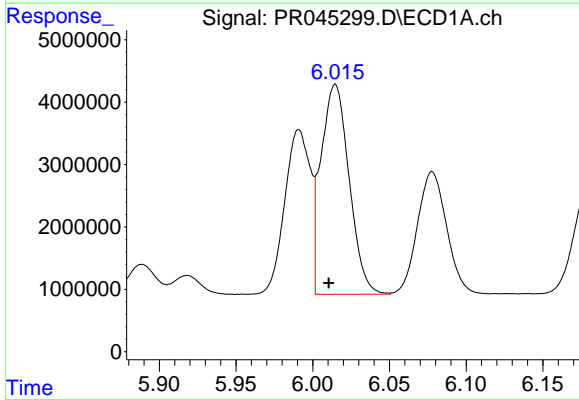
R.T.: 5.991 min  
 Delta R.T.: 0.004 min  
 Response: 30711373  
 Conc: 424.42 ng/ml

**Instrument :**  
 ECD\_R  
**ClientSampled :**  
 AR1660CCC500



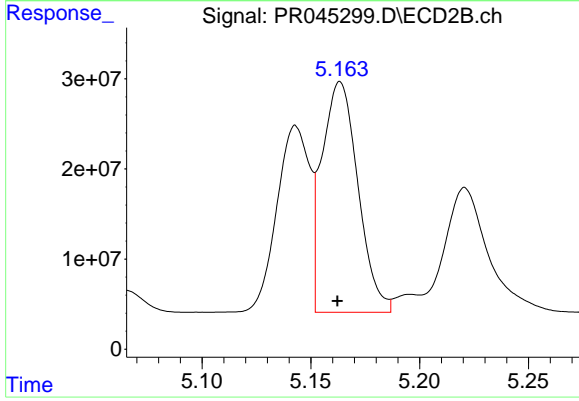
#3 AR-1016-1

R.T.: 5.143 min  
 Delta R.T.: 0.001 min  
 Response: 217120358  
 Conc: 439.68 ng/ml



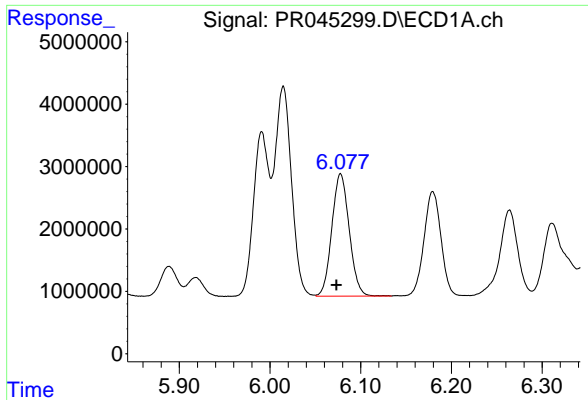
#4 AR-1016-2

R.T.: 6.015 min  
 Delta R.T.: 0.004 min  
 Response: 42986227  
 Conc: 426.73 ng/ml



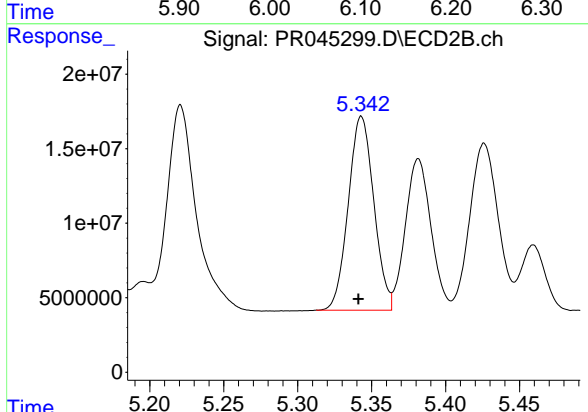
#4 AR-1016-2

R.T.: 5.163 min  
 Delta R.T.: 0.001 min  
 Response: 295443439  
 Conc: 446.61 ng/ml

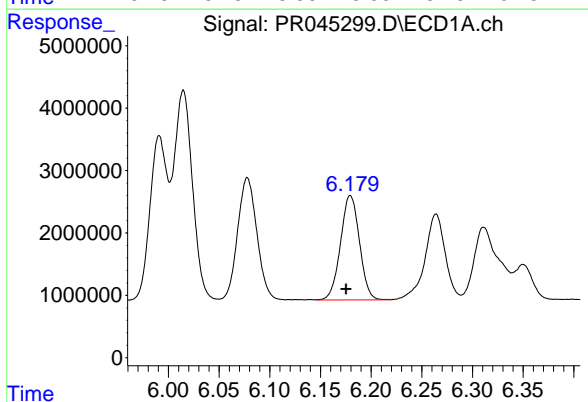


#5 AR-1016-3  
 R.T.: 6.078 min  
 Delta R.T.: 0.005 min  
 Response: 26062356  
 Conc: 418.43 ng/ml

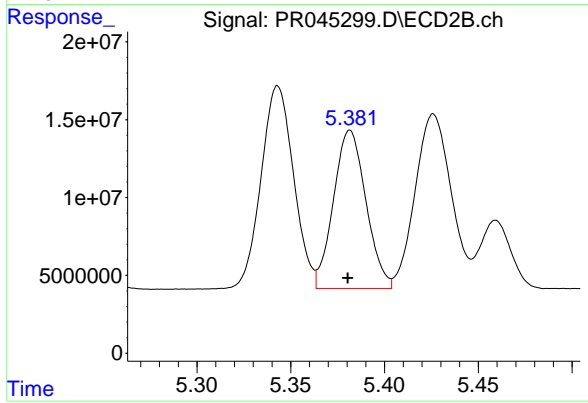
**Instrument :**  
 ECD\_R  
**ClientSampleId :**  
 AR1660CCC500



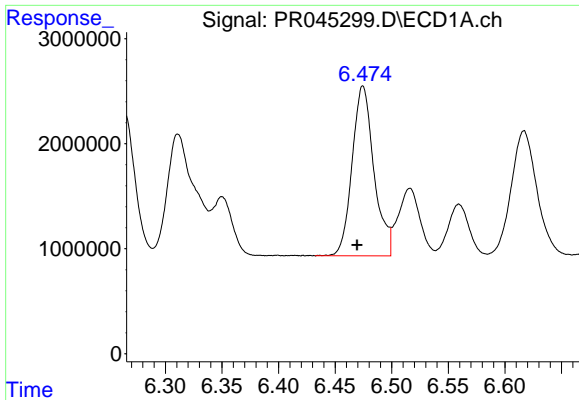
#5 AR-1016-3  
 R.T.: 5.343 min  
 Delta R.T.: 0.002 min  
 Response: 156595477  
 Conc: 442.37 ng/ml



#6 AR-1016-4  
 R.T.: 6.179 min  
 Delta R.T.: 0.004 min  
 Response: 21757061  
 Conc: 418.58 ng/ml



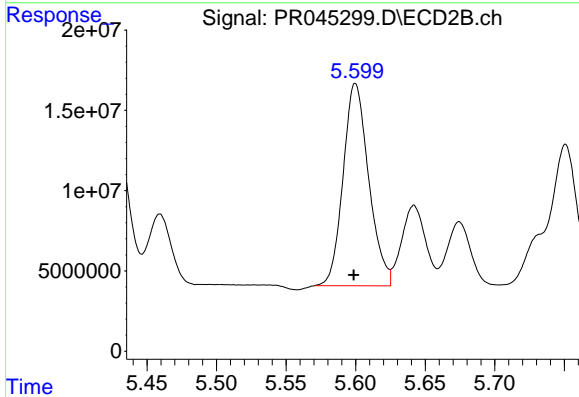
#6 AR-1016-4  
 R.T.: 5.382 min  
 Delta R.T.: 0.001 min  
 Response: 122538660  
 Conc: 434.66 ng/ml



#7 AR-1016-5

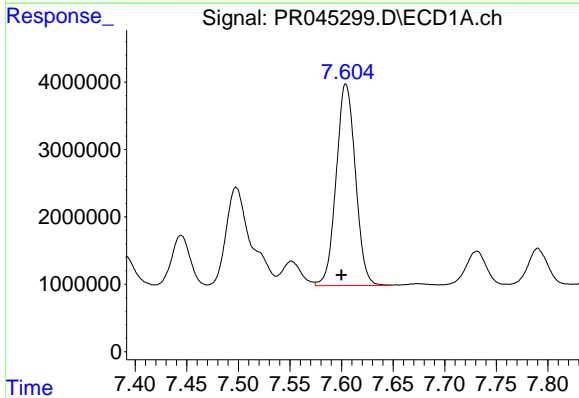
R.T.: 6.475 min  
Delta R.T.: 0.005 min  
Response: 21754533  
Conc: 416.72 ng/ml

Instrument :  
ECD\_R  
ClientSampleId :  
AR1660CCC500



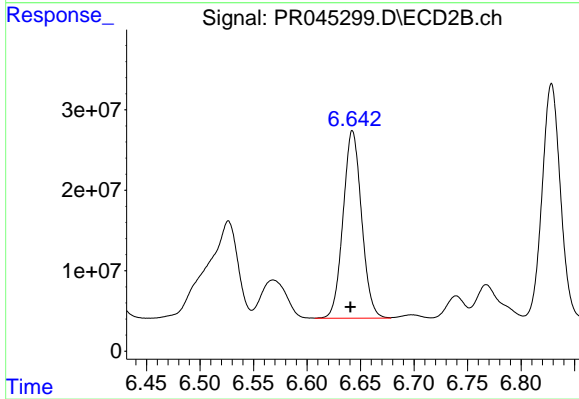
#7 AR-1016-5

R.T.: 5.600 min  
Delta R.T.: 0.001 min  
Response: 161367263  
Conc: 442.39 ng/ml



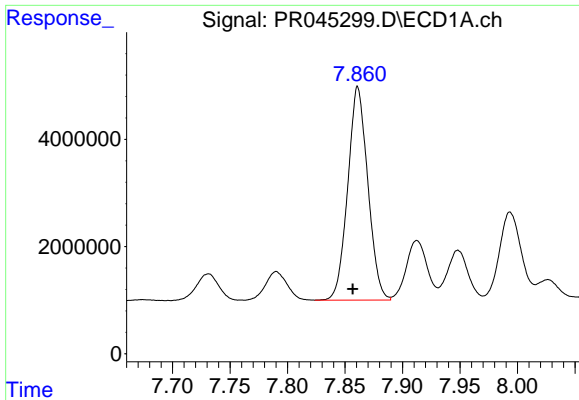
#31 AR-1260-1

R.T.: 7.604 min  
Delta R.T.: 0.004 min  
Response: 38820984  
Conc: 419.72 ng/ml



#31 AR-1260-1

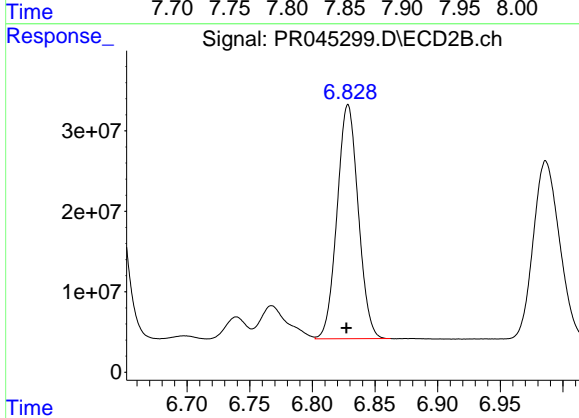
R.T.: 6.643 min  
Delta R.T.: 0.002 min  
Response: 280810029  
Conc: 440.73 ng/ml



#32 AR-1260-2

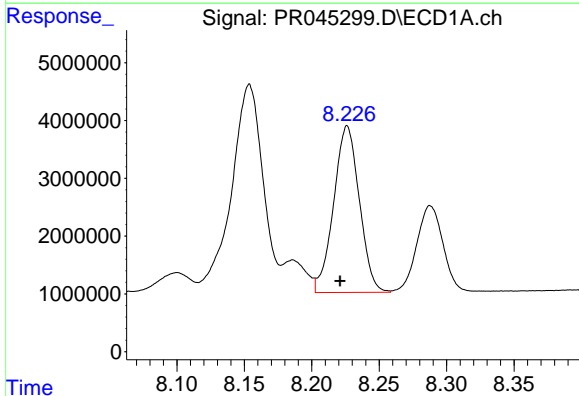
R.T.: 7.861 min  
 Delta R.T.: 0.004 min  
 Response: 48412262  
 Conc: 431.14 ng/ml

Instrument :  
 ECD\_R  
 ClientSampleId :  
 AR1660CCC500



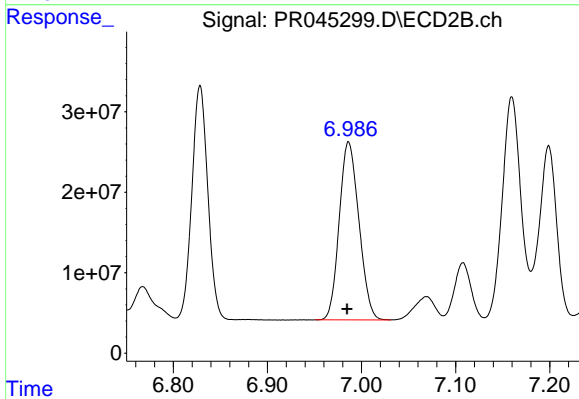
#32 AR-1260-2

R.T.: 6.828 min  
 Delta R.T.: 0.001 min  
 Response: 342393726  
 Conc: 451.80 ng/ml



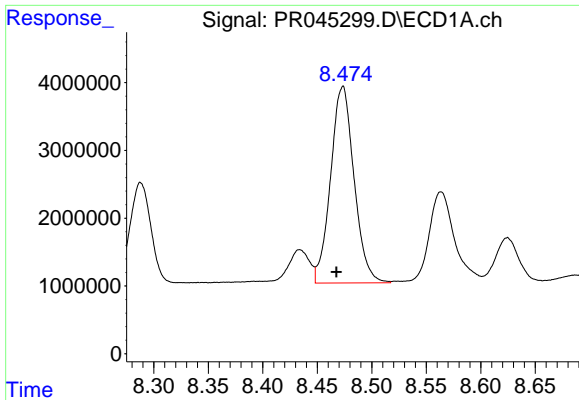
#33 AR-1260-3

R.T.: 8.226 min  
 Delta R.T.: 0.005 min  
 Response: 38252709  
 Conc: 437.92 ng/ml



#33 AR-1260-3

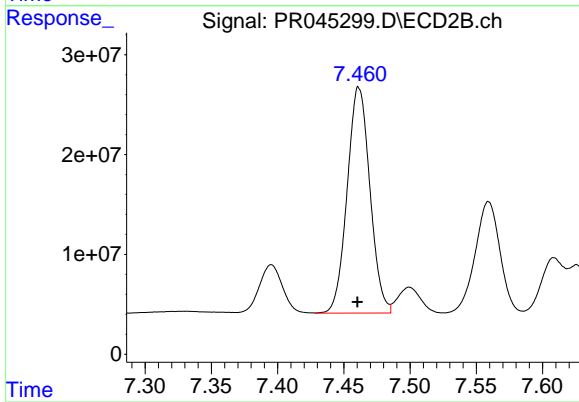
R.T.: 6.986 min  
 Delta R.T.: 0.002 min  
 Response: 321292720  
 Conc: 448.90 ng/ml



#34 AR-1260-4

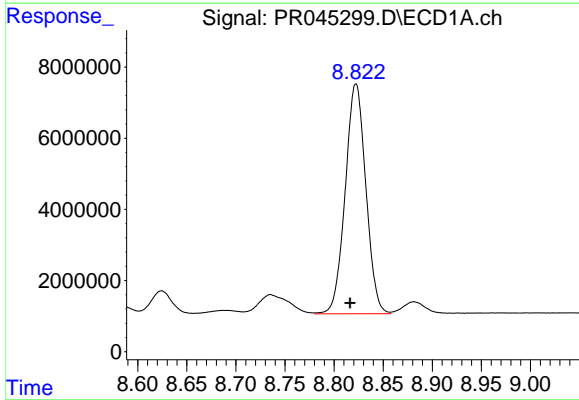
R.T.: 8.473 min  
Delta R.T.: 0.006 min  
Response: 43550921  
Conc: 422.41 ng/ml

Instrument :  
ECD\_R  
ClientSampleId :  
AR1660CCC500



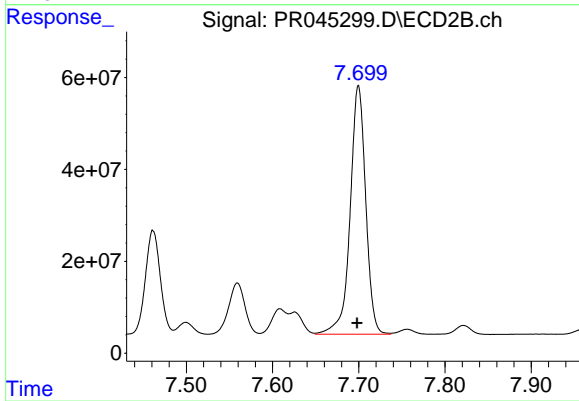
#34 AR-1260-4

R.T.: 7.461 min  
Delta R.T.: 0.001 min  
Response: 270872142  
Conc: 452.56 ng/ml



#35 AR-1260-5

R.T.: 8.822 min  
Delta R.T.: 0.006 min  
Response: 94449807  
Conc: 456.27 ng/ml



#35 AR-1260-5

R.T.: 7.700 min  
Delta R.T.: 0.001 min  
Response: 678288983  
Conc: 470.04 ng/ml