

Data Path : Z:\pestpcbsrv\HPCHEM1\ECD\_R\Data\PR051620\  
 Data File : PR045301.D  
 Signal(s) : Signal #1: ECD1A.ch Signal #2: ECD2B.ch  
 Acq On : 15 May 2020 08:44  
 Operator : AJ\MA  
 Sample : L2182-01  
 Misc : AR1221 40PPB LOD  
 ALS Vial : 5 Sample Multiplier: 1

**Instrument :**  
 ECD\_R  
**ClientSampleId :**  
 LOD-MDL-SOIL-01-QT2-2020

**Manual Integrations**  
**APPROVED**  
 Sohil  
 5/18/2020 3:36:15 PM

Integration File signal 1: autoint1.e  
 Integration File signal 2: autoint2.e  
 Quant Time: May 15 23:00:50 2020  
 Quant Method : Z:\pestpcbsrv\HPCHEM1\ECD\_R\Method\PR051520.M  
 Quant Title : GC EXTRACTABLES  
 QLast Update : Thu May 14 17:15:31 2020  
 Response via : Initial Calibration  
 Integrator: ChemStation

Volume Inj. : 2 µl  
 Signal #1 Phase : ZB-MR1 Signal #2 Phase: ZB-MR2  
 Signal #1 Info : 30Mx0.32mmx 0.50µ Signal #2 Info : 30M x 0.32mm x 0.25µm

Compound	RT#1	RT#2	Resp#1	Resp#2	ng/ml	ng/ml
-----						
System Monitoring Compounds						
1) SA Tetrachlo...	4.812	4.038	32238188	237.9E6	16.278	17.253
2) SA Decachlor...	10.855	9.198	38831223	232.1E6	19.347m	19.680m
Target Compounds						
8) L2 AR-1221-1	5.026	4.253	871501	5679613	43.778	41.723m
9) L2 AR-1221-2	5.119	4.340	939359	6742472	63.947m	66.346m
10) L2 AR-1221-3	5.194	4.418	2008694	13700595	45.042	44.962m
-----						

(f)=RT Delta > 1/2 Window (#)=Amounts differ by > 25% (m)=manual int.

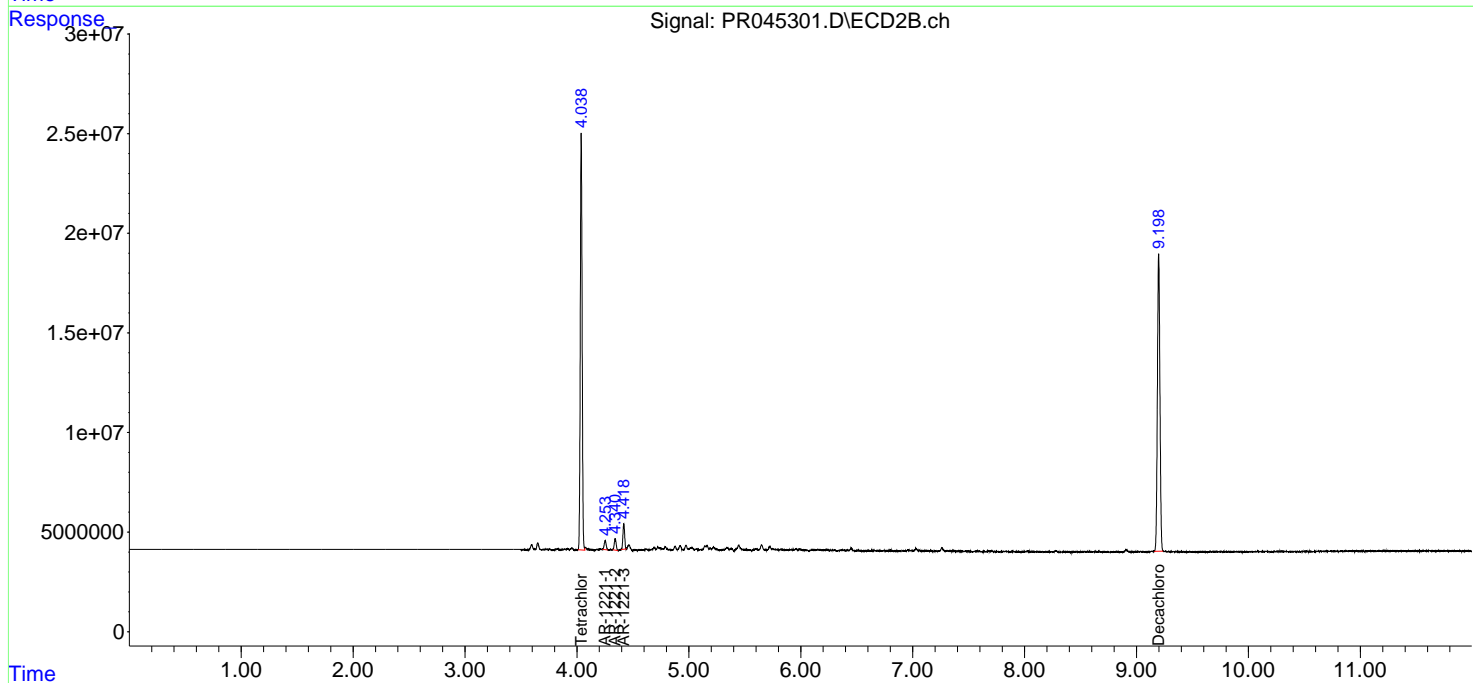
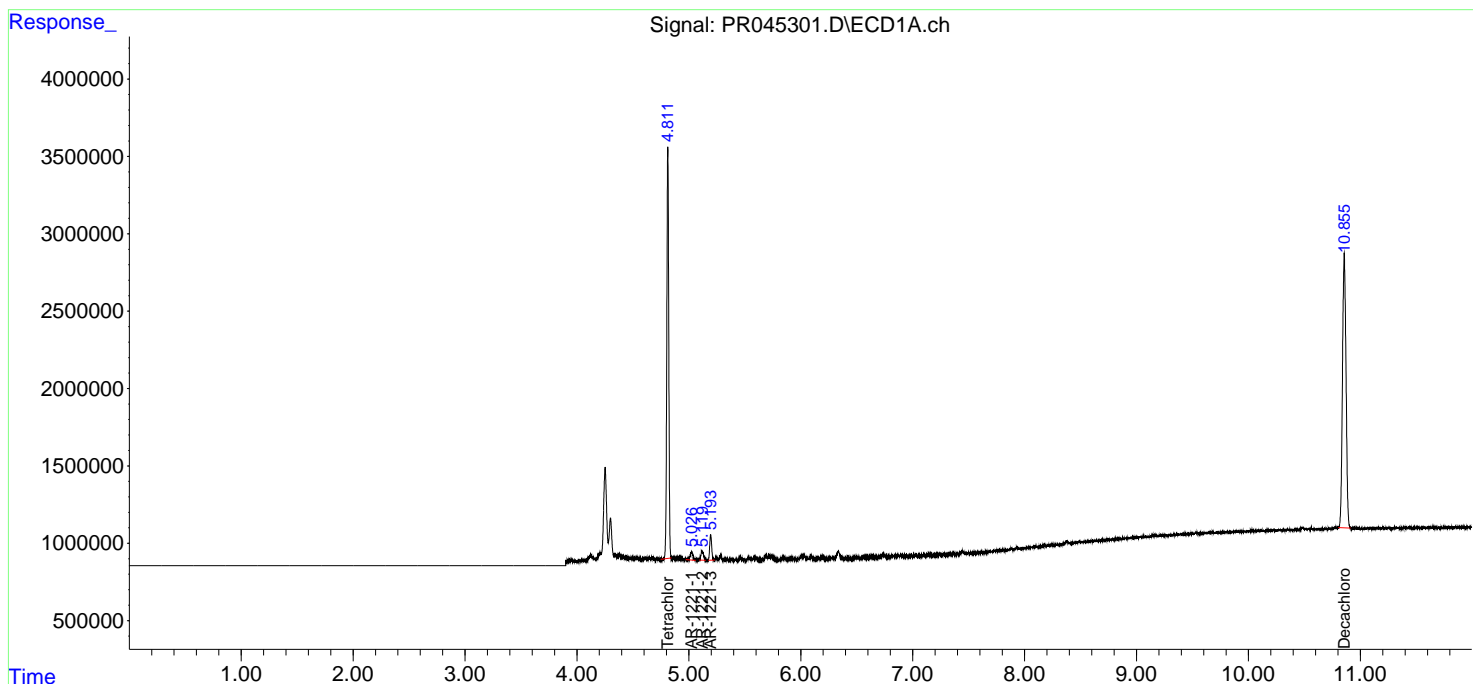
Data Path : Z:\pestpcbsrv\HPCHEM1\ECD\_R\Data\PR051620\  
 Data File : PR045301.D  
 Signal(s) : Signal #1: ECD1A.ch Signal #2: ECD2B.ch  
 Acq On : 15 May 2020 08:44  
 Operator : AJ\MA  
 Sample : L2182-01  
 Misc : AR1221 40PPB LOD  
 ALS Vial : 5 Sample Multiplier: 1

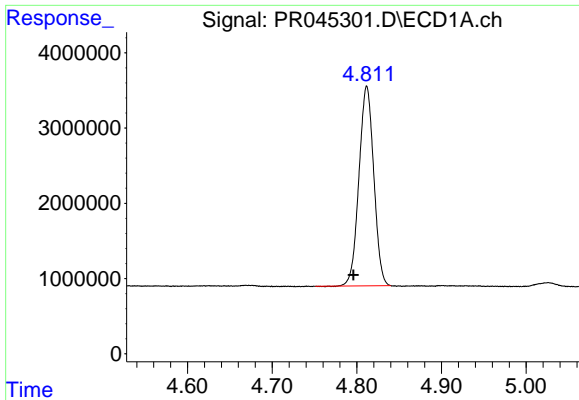
**Instrument :**  
 ECD\_R  
**ClientSampled :**  
 LOD-MDL-SOIL-01-QT2-2020

**Manual Integrations**  
**APPROVED**  
 Sohil  
 5/18/2020 3:36:15 PM

Integration File signal 1: autoint1.e  
 Integration File signal 2: autoint2.e  
 Quant Time: May 15 23:00:50 2020  
 Quant Method : Z:\pestpcbsrv\HPCHEM1\ECD\_R\Method\PR051520.M  
 Quant Title : GC EXTRACTABLES  
 QLast Update : Thu May 14 17:15:31 2020  
 Response via : Initial Calibration  
 Integrator: ChemStation

Volume Inj. : 2 µl  
 Signal #1 Phase : ZB-MR1 Signal #2 Phase: ZB-MR2  
 Signal #1 Info : 30Mx0.32mmx 0.50µ Signal #2 Info : 30M x 0.32mm x 0.25µm

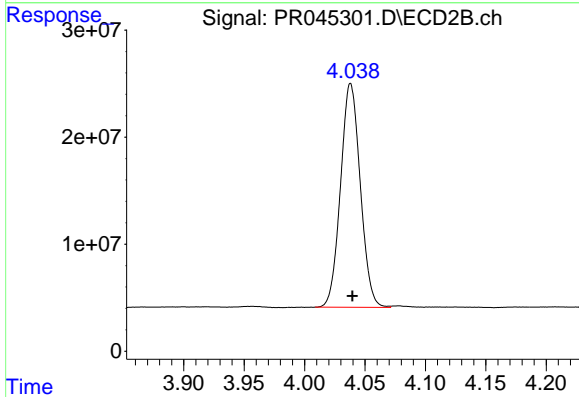




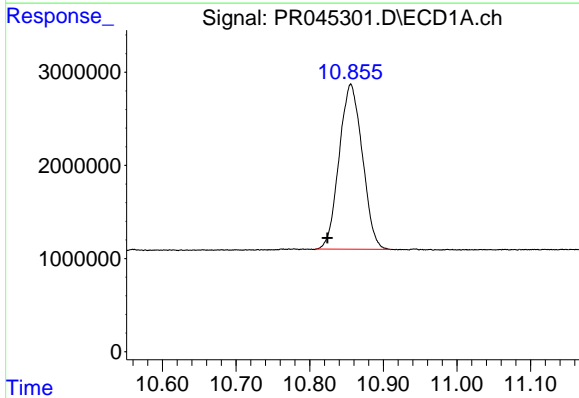
#1 Tetrachloro-m-xylene  
 R.T.: 4.812 min  
 Delta R.T.: 0.016 min  
 Response: 32238188  
 Conc: 16.28 ng/ml

**Instrument :**  
 ECD\_R  
**ClientSampled :**  
 LOD-MDL-SOIL-01-QT2-2020

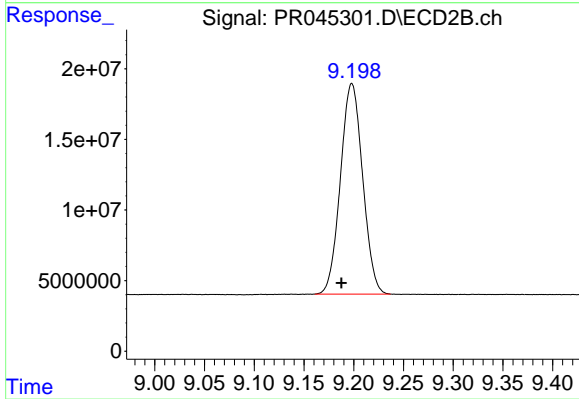
**Manual Integrations**  
**APPROVED**  
 Sohil  
 5/18/2020 3:36:15 PM



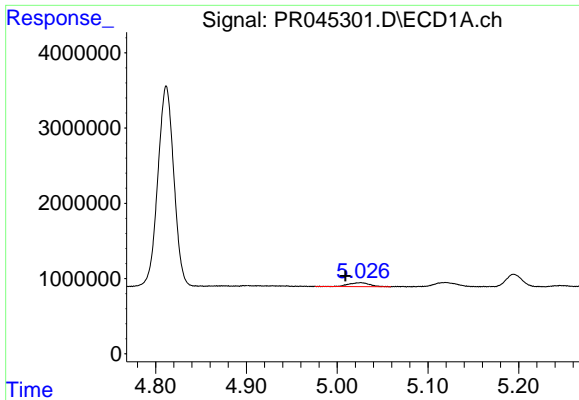
#1 Tetrachloro-m-xylene  
 R.T.: 4.038 min  
 Delta R.T.: -0.001 min  
 Response: 237889913  
 Conc: 17.25 ng/ml



#2 Decachlorobiphenyl  
 R.T.: 10.855 min  
 Delta R.T.: 0.031 min  
 Response: 38831223  
 Conc: 19.35 ng/ml m



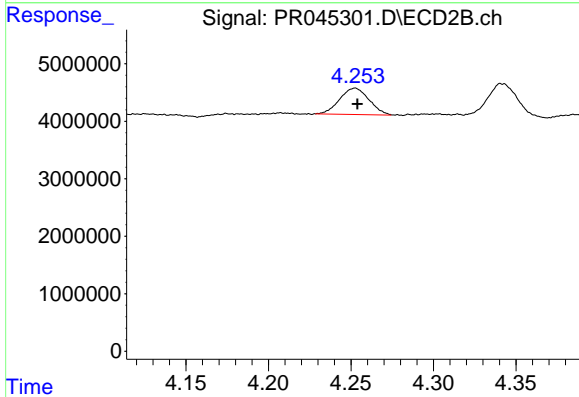
#2 Decachlorobiphenyl  
 R.T.: 9.198 min  
 Delta R.T.: 0.010 min  
 Response: 232129973  
 Conc: 19.68 ng/ml m



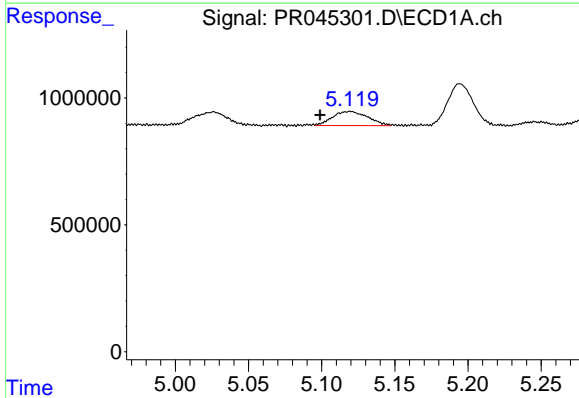
#8 AR-1221-1  
 R.T.: 5.026 min  
 Delta R.T.: 0.017 min  
 Response: 871501  
 Conc: 43.78 ng/ml

**Instrument :**  
 ECD\_R  
**ClientSampled :**  
 LOD-MDL-SOIL-01-QT2-2020

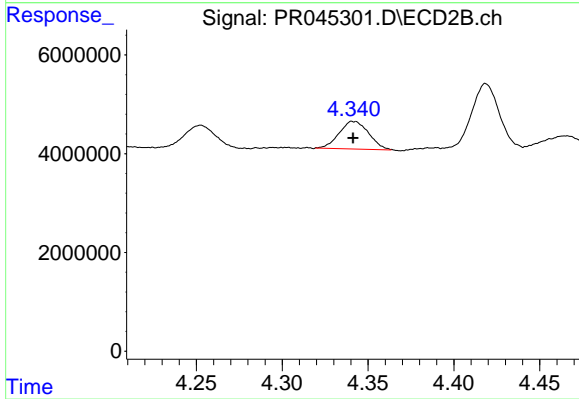
**Manual Integrations**  
**APPROVED**  
 Sohil  
 5/18/2020 3:36:15 PM



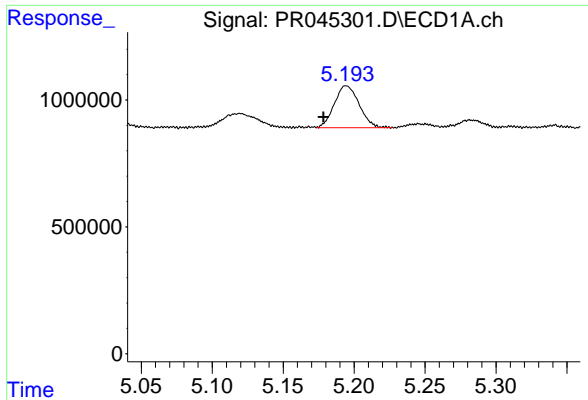
#8 AR-1221-1  
 R.T.: 4.253 min  
 Delta R.T.: -0.001 min  
 Response: 5679613  
 Conc: 41.72 ng/ml m



#9 AR-1221-2  
 R.T.: 5.119 min  
 Delta R.T.: 0.020 min  
 Response: 939359  
 Conc: 63.95 ng/ml m



#9 AR-1221-2  
 R.T.: 4.340 min  
 Delta R.T.: -0.001 min  
 Response: 6742472  
 Conc: 66.35 ng/ml m



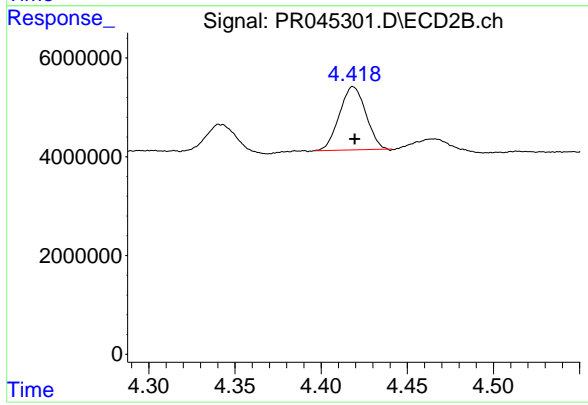
#10 AR-1221-3

R.T.: 5.194 min  
Delta R.T.: 0.016 min  
Response: 2008694  
Conc: 45.04 ng/ml

Instrument :  
ECD\_R  
ClientSampleId :  
LOD-MDL-SOIL-01-QT2-2020

Manual Integrations  
APPROVED

Sohil  
5/18/2020 3:36:15 PM



#10 AR-1221-3

R.T.: 4.418 min  
Delta R.T.: -0.002 min  
Response: 13700595  
Conc: 44.96 ng/ml m