

Data Path : Z:\pestpcbsrv\HPCHEM1\ECD_R\Data\PR051620\
 Data File : PR045304.D
 Signal(s) : Signal #1: ECD1A.ch Signal #2: ECD2B.ch
 Acq On : 15 May 2020 09:27
 Operator : AJ\MA
 Sample : L2182-01
 Misc : AR1248 25PPB LOD
 ALS Vial : 8 Sample Multiplier: 1

Instrument :
 ECD_R
ClientSampleId :
 LOD-MDL-SOIL-01-QT2-2020

Integration File signal 1: autoint1.e
 Integration File signal 2: autoint2.e
 Quant Time: May 15 23:01:53 2020
 Quant Method : Z:\pestpcbsrv\HPCHEM1\ECD_R\Method\PR051520.M
 Quant Title : GC EXTRACTABLES
 QLast Update : Thu May 14 17:15:31 2020
 Response via : Initial Calibration
 Integrator: ChemStation

Volume Inj. : 2 µl
 Signal #1 Phase : ZB-MR2 Signal #2 Phase: ZB-MR2
 Signal #1 Info : 30Mx0.32mmx 0.50µ Signal #2 Info : 30M x 0.32mm x 0.25µm

Compound	RT#1	RT#2	Resp#1	Resp#2	ng/ml	ng/ml

System Monitoring Compounds						
1) SA Tetrachlo...	4.797	4.041	37197665	274.6E6	18.782	19.916
2) SA Decachlor...	10.823	9.187	44443379	268.6E6	22.143	22.768
Target Compounds						
21) L5 AR-1248-1	5.986	5.143	1803927	12787940	26.790	26.676
22) L5 AR-1248-2	6.259	5.381	2412049	15117442	26.194	25.384
23) L5 AR-1248-3	6.468	5.425	2567374	15797795	24.525	25.873
24) L5 AR-1248-4	6.876	5.599	2874033	18111776	23.518	23.878
25) L5 AR-1248-5	6.915	5.996	2782636	18463694	23.842	24.086

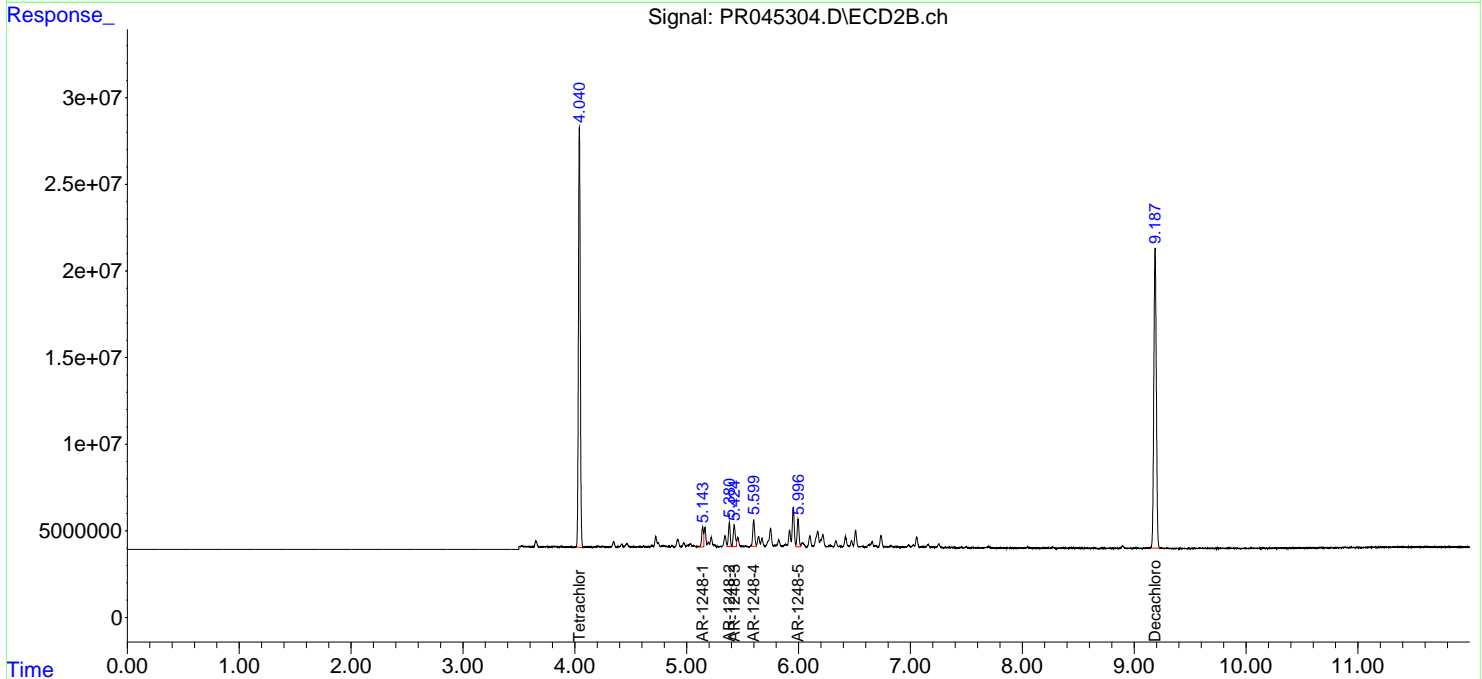
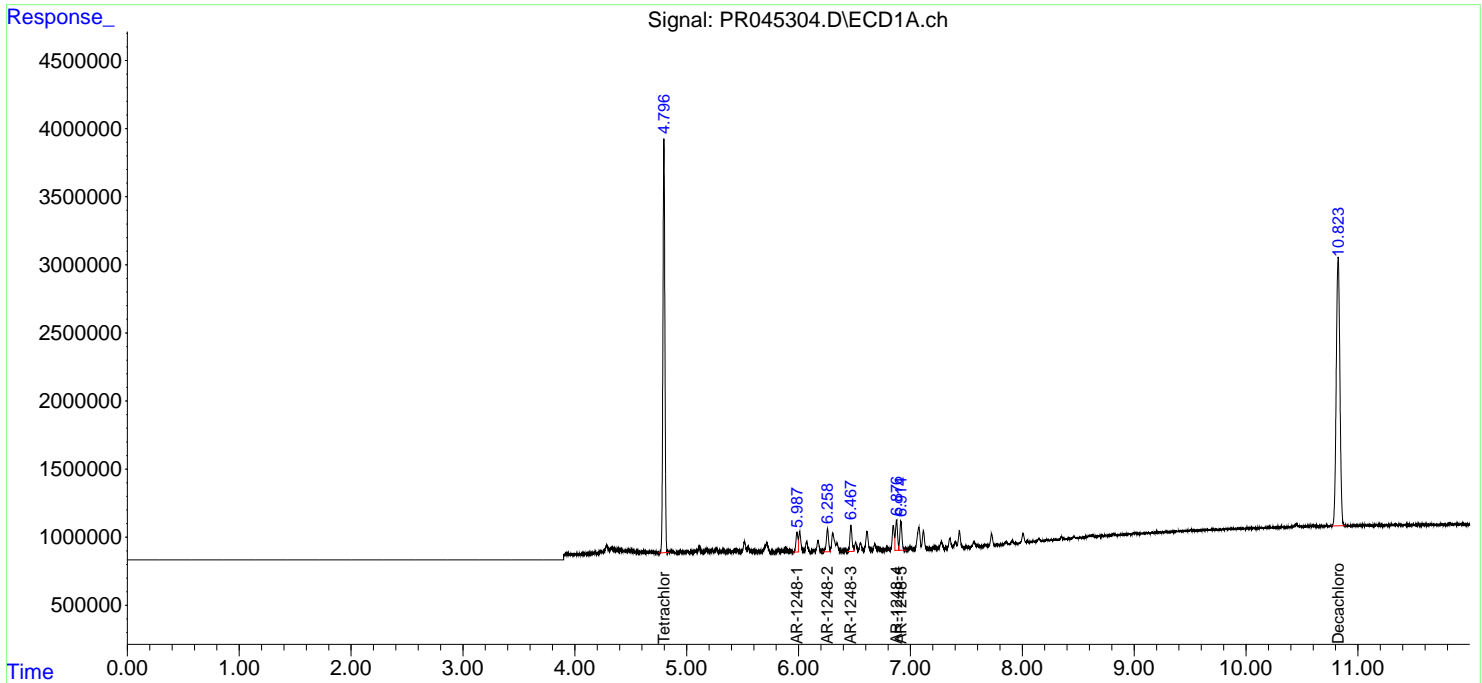
(f)=RT Delta > 1/2 Window (#)=Amounts differ by > 25% (m)=manual int.

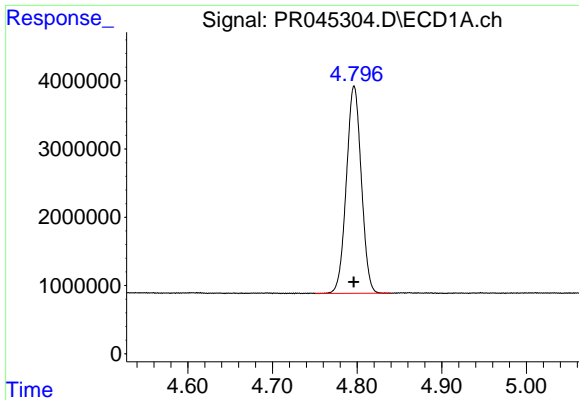
Data Path : Z:\pestpcbsrv\HPCHEM1\ECD_R\Data\PR051620\
 Data File : PR045304.D
 Signal(s) : Signal #1: ECD1A.ch Signal #2: ECD2B.ch
 Acq On : 15 May 2020 09:27
 Operator : AJ\MA
 Sample : L2182-01
 Misc : AR1248 25PPB LOD
 ALS Vial : 8 Sample Multiplier: 1

Instrument :
 ECD_R
ClientSampled :
 LOD-MDL-SOIL-01-QT2-2020

Integration File signal 1: autoint1.e
 Integration File signal 2: autoint2.e
 Quant Time: May 15 23:01:53 2020
 Quant Method : Z:\pestpcbsrv\HPCHEM1\ECD_R\Method\PR051520.M
 Quant Title : GC EXTRACTABLES
 QLast Update : Thu May 14 17:15:31 2020
 Response via : Initial Calibration
 Integrator: ChemStation

Volume Inj. : 2 µl
 Signal #1 Phase : ZB-MR1 Signal #2 Phase: ZB-MR2
 Signal #1 Info : 30Mx0.32mmx 0.50µm Signal #2 Info : 30M x 0.32mm x 0.25µm

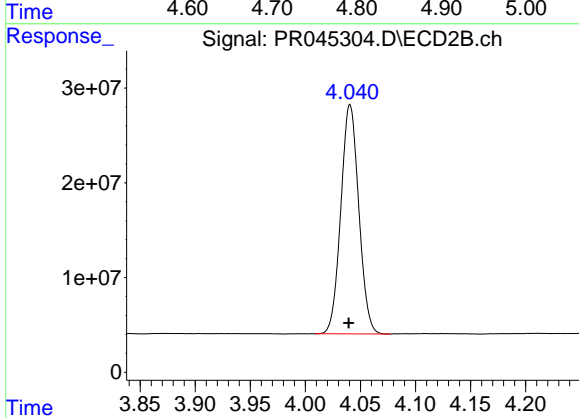




#1 Tetrachloro-m-xylene

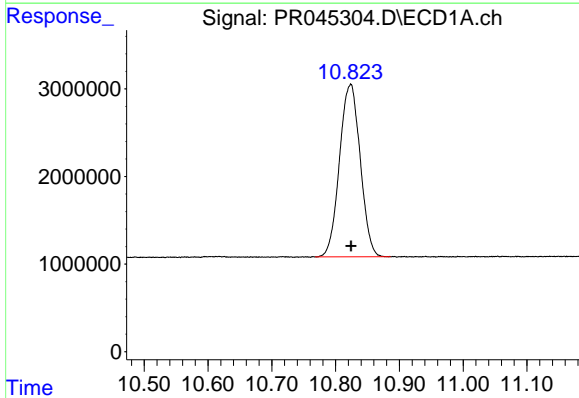
R.T.: 4.797 min
 Delta R.T.: 0.000 min
 Response: 37197665
 Conc: 18.78 ng/ml

Instrument :
 ECD_R
 ClientSampleId :
 LOD-MDL-SOIL-01-QT2-2020



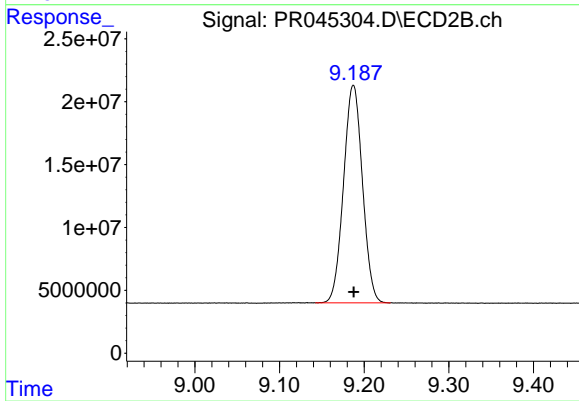
#1 Tetrachloro-m-xylene

R.T.: 4.041 min
 Delta R.T.: 0.001 min
 Response: 274615395
 Conc: 19.92 ng/ml



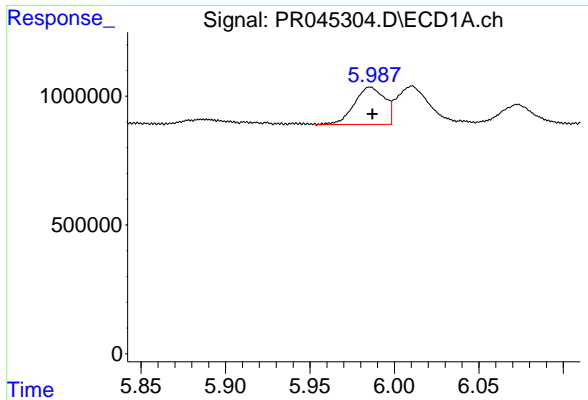
#2 Decachlorobiphenyl

R.T.: 10.823 min
 Delta R.T.: -0.001 min
 Response: 44443379
 Conc: 22.14 ng/ml



#2 Decachlorobiphenyl

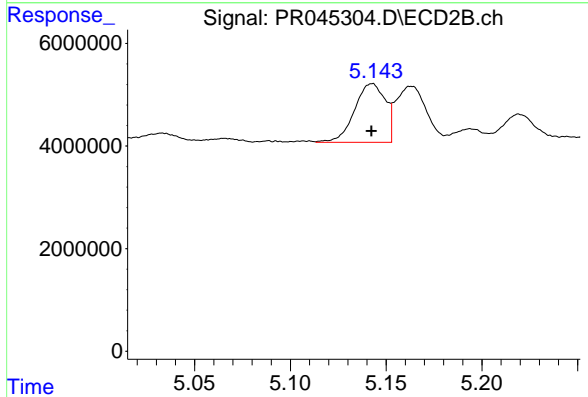
R.T.: 9.187 min
 Delta R.T.: 0.000 min
 Response: 268555419
 Conc: 22.77 ng/ml



#21 AR-1248-1

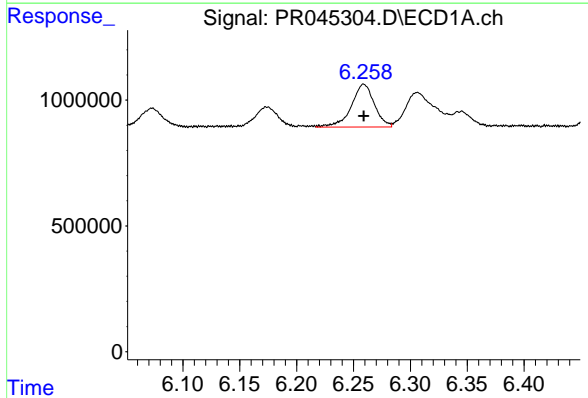
R.T.: 5.986 min
 Delta R.T.: -0.001 min
 Response: 1803927
 Conc: 26.79 ng/ml

Instrument :
 ECD_R
ClientSampleId :
 LOD-MDL-SOIL-01-QT2-2020



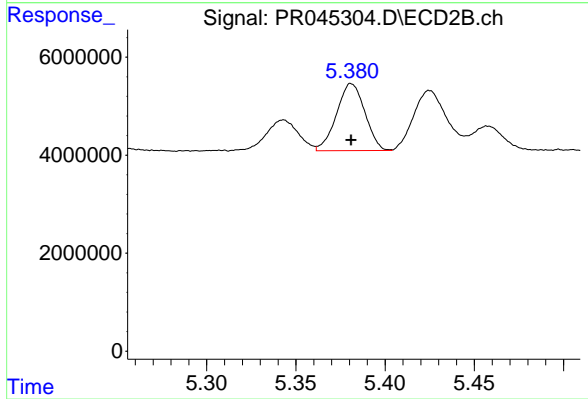
#21 AR-1248-1

R.T.: 5.143 min
 Delta R.T.: 0.000 min
 Response: 12787940
 Conc: 26.68 ng/ml



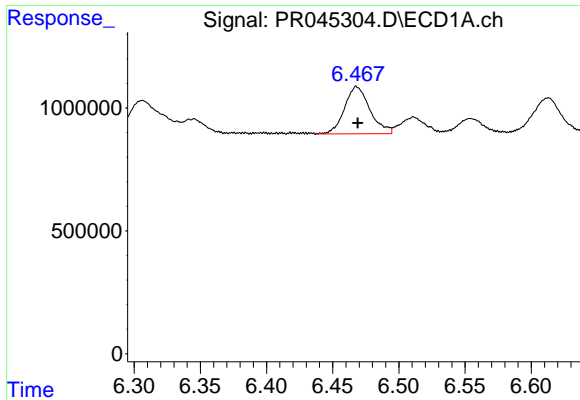
#22 AR-1248-2

R.T.: 6.259 min
 Delta R.T.: 0.000 min
 Response: 2412049
 Conc: 26.19 ng/ml



#22 AR-1248-2

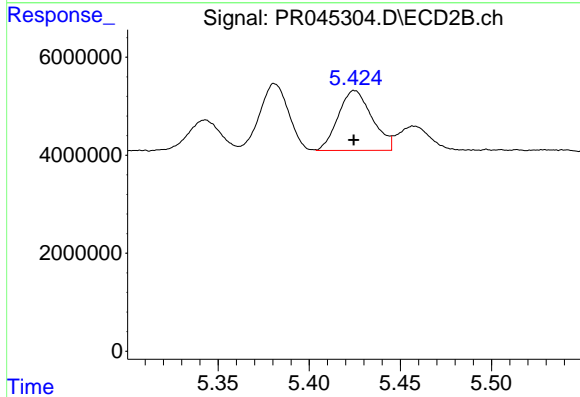
R.T.: 5.381 min
 Delta R.T.: 0.000 min
 Response: 15117442
 Conc: 25.38 ng/ml



#23 AR-1248-3

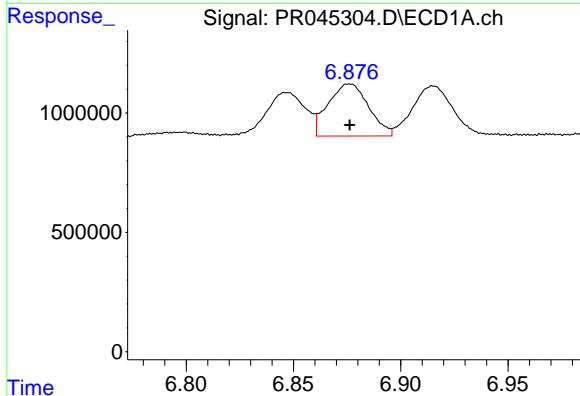
R.T.: 6.468 min
 Delta R.T.: 0.000 min
 Response: 2567374
 Conc: 24.52 ng/ml

Instrument :
 ECD_R
 ClientSampleId :
 LOD-MDL-SOIL-01-QT2-2020



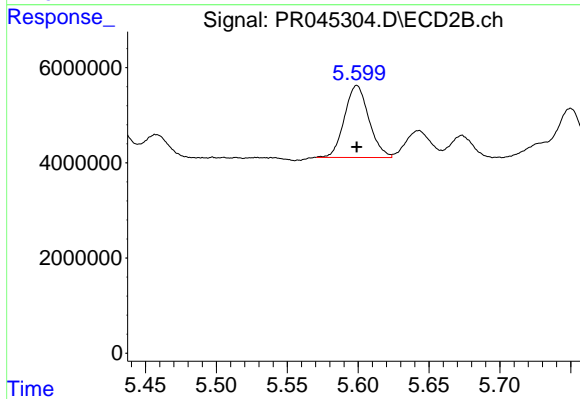
#23 AR-1248-3

R.T.: 5.425 min
 Delta R.T.: 0.000 min
 Response: 15797795
 Conc: 25.87 ng/ml



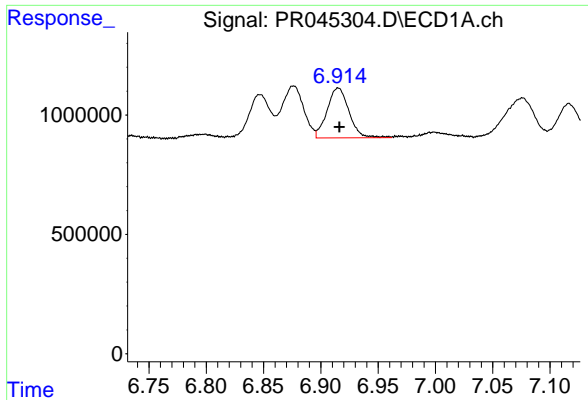
#24 AR-1248-4

R.T.: 6.876 min
 Delta R.T.: 0.000 min
 Response: 2874033
 Conc: 23.52 ng/ml



#24 AR-1248-4

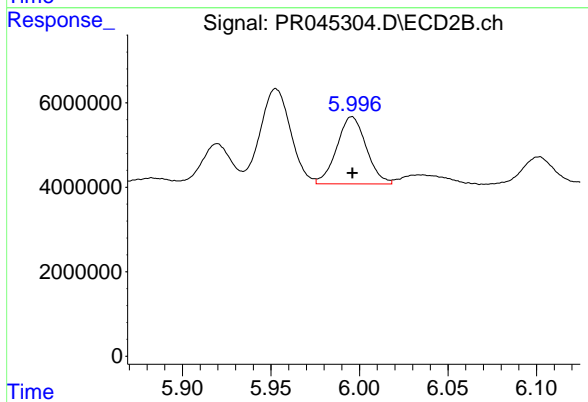
R.T.: 5.599 min
 Delta R.T.: 0.000 min
 Response: 18111776
 Conc: 23.88 ng/ml



#25 AR-1248-5

R.T.: 6.915 min
 Delta R.T.: -0.001 min
 Response: 2782636
 Conc: 23.84 ng/ml

Instrument :
 ECD_R
ClientSampleId :
 LOD-MDL-SOIL-01-QT2-2020



#25 AR-1248-5

R.T.: 5.996 min
 Delta R.T.: 0.000 min
 Response: 18463694
 Conc: 24.09 ng/ml