

Data Path : Z:\pestpcbsrv\HPCHEM1\ECD_R\Data\PR051620\
 Data File : PR045307.D
 Signal(s) : Signal #1: ECD1A.ch Signal #2: ECD2B.ch
 Acq On : 15 May 2020 10:11
 Operator : AJ\MA
 Sample : L2182-01
 Misc : AR1268 40PPB LOD
 ALS Vial : 11 Sample Multiplier: 1

Instrument :
 ECD_R
ClientSampleId :
 LOD-MDL-SOIL-01-QT2-2020

Manual Integrations
APPROVED
 Sohil
 5/18/2020 3:36:19 PM

Integration File signal 1: autoint1.e
 Integration File signal 2: autoint2.e
 Quant Time: May 15 23:02:55 2020
 Quant Method : Z:\pestpcbsrv\HPCHEM1\ECD_R\Method\PR051520.M
 Quant Title : GC EXTRACTABLES
 QLast Update : Thu May 14 17:15:31 2020
 Response via : Initial Calibration
 Integrator: ChemStation

Volume Inj. : 2 µl
 Signal #1 Phase : ZB-MR1 Signal #2 Phase: ZB-MR2
 Signal #1 Info : 30Mx0.32mmx 0.50µ Signal #2 Info : 30M x 0.32mm x 0.25µm

Compound	RT#1	RT#2	Resp#1	Resp#2	ng/ml	ng/ml

System Monitoring Compounds						
1) SA Tetrachlo...	4.796	4.040	35962219	268.0E6	18.158	19.436
2) SA Decachlor...	10.823	9.187	46775885	285.0E6	23.305	24.165
Target Compounds						
41) L9 AR-1268-1	9.152	7.985	11357261	76822513	42.905m	45.010
42) L9 AR-1268-2	9.258	8.050	10739637	72117027	44.433	45.213
43) L9 AR-1268-3	9.506	8.270	8674820	60668533	43.281m	46.626
44) L9 AR-1268-4	9.989	8.574	3795819	27304219	39.063	46.822
45) L9 AR-1268-5	10.447	8.898	29598416	186.7E6	43.384	44.414

(f)=RT Delta > 1/2 Window (#)=Amounts differ by > 25% (m)=manual int.

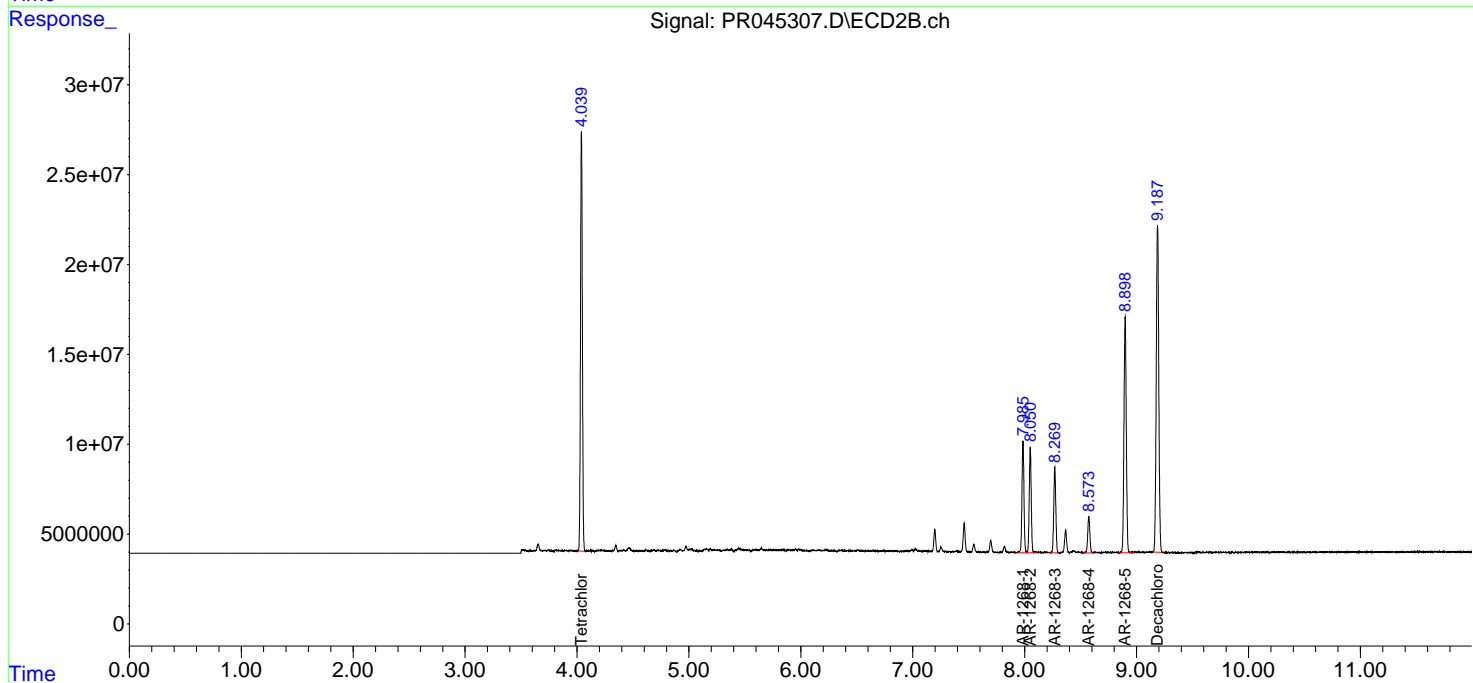
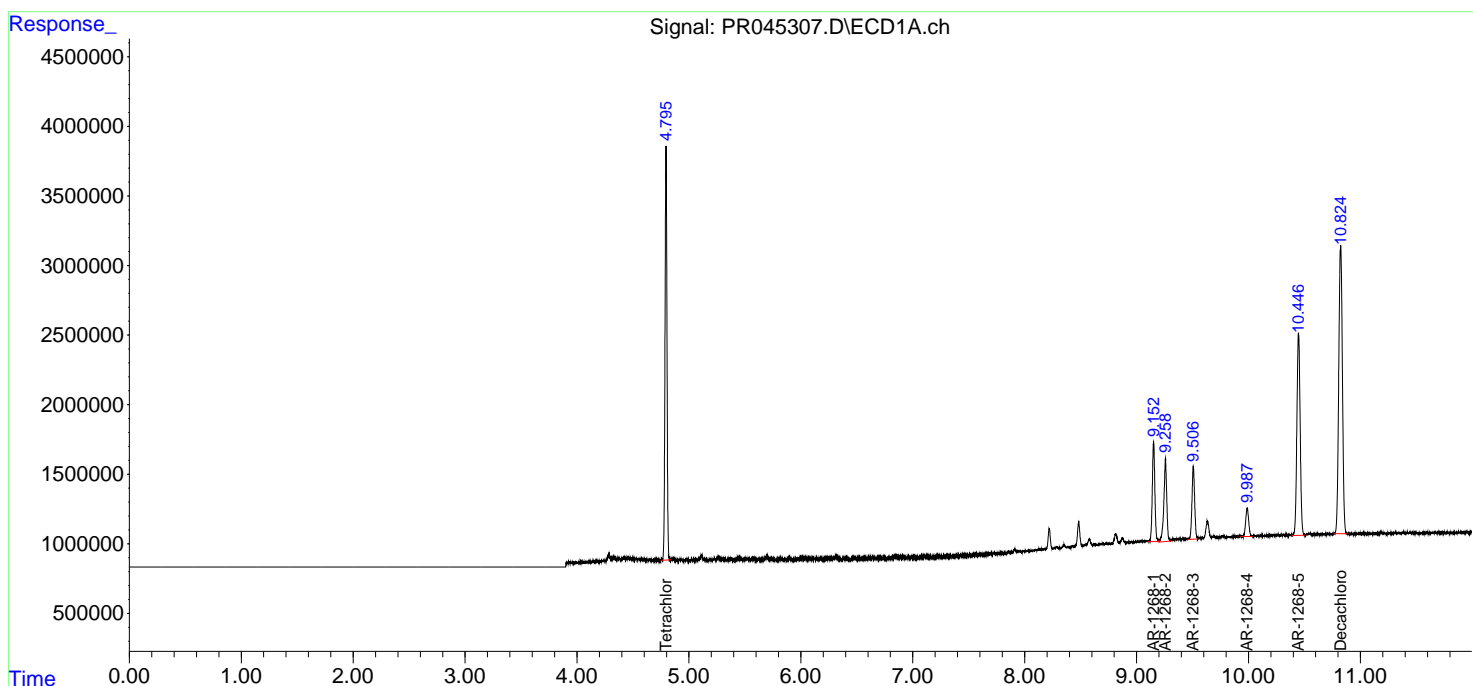
Data Path : Z:\pestpcbsrv\HPCHEM1\ECD_R\Data\PR051620\
 Data File : PR045307.D
 Signal(s) : Signal #1: ECD1A.ch Signal #2: ECD2B.ch
 Acq On : 15 May 2020 10:11
 Operator : AJ\MA
 Sample : L2182-01
 Misc : AR1268 40PPB LOD
 ALS Vial : 11 Sample Multiplier: 1

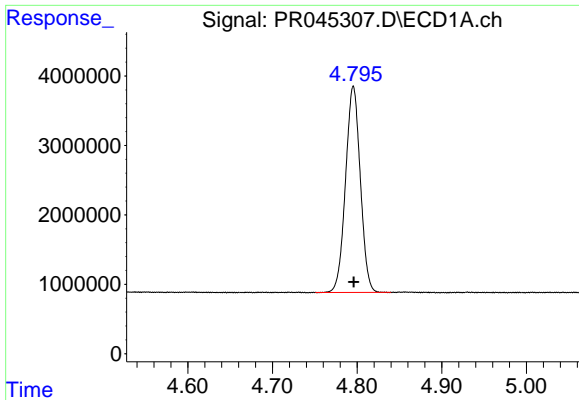
Instrument :
 ECD_R
Client Sampled :
 LOD-MDL-SOIL-01-QT2-2020

Manual Integrations
APPROVED
 Sohil
 5/18/2020 3:36:19 PM

Integration File signal 1: autoint1.e
 Integration File signal 2: autoint2.e
 Quant Time: May 15 23:02:55 2020
 Quant Method : Z:\pestpcbsrv\HPCHEM1\ECD_R\Method\PR051520.M
 Quant Title : GC EXTRACTABLES
 QLast Update : Thu May 14 17:15:31 2020
 Response via : Initial Calibration
 Integrator: ChemStation

Volume Inj. : 2 µl
 Signal #1 Phase : ZB-MR1 Signal #2 Phase: ZB-MR2
 Signal #1 Info : 30Mx0.32mmx 0.50µ Signal #2 Info : 30M x 0.32mm x 0.25µm





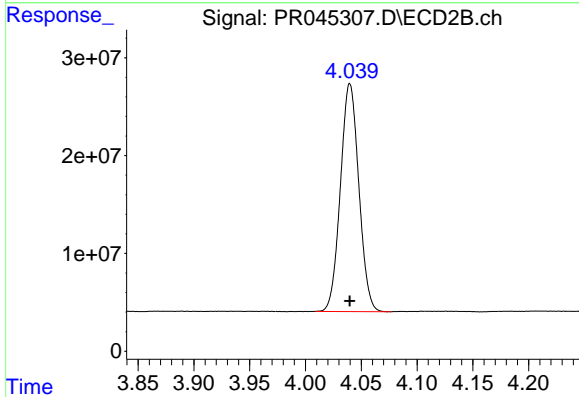
#1 Tetrachloro-m-xylene

R.T.: 4.796 min
 Delta R.T.: 0.000 min
 Response: 35962219
 Conc: 18.16 ng/ml

Instrument :
 ECD_R
ClientSampled :
 LOD-MDL-SOIL-01-QT2-2020

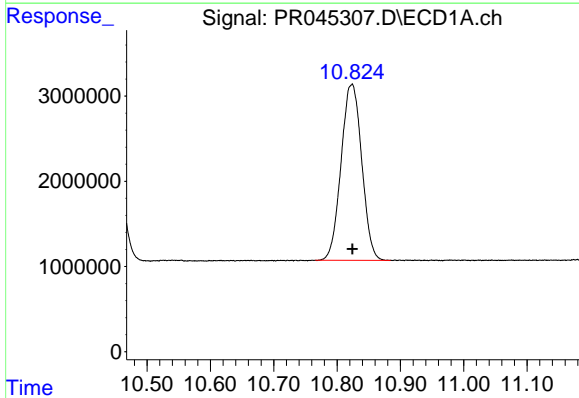
Manual Integrations
APPROVED

Sohil
 5/18/2020 3:36:19 PM



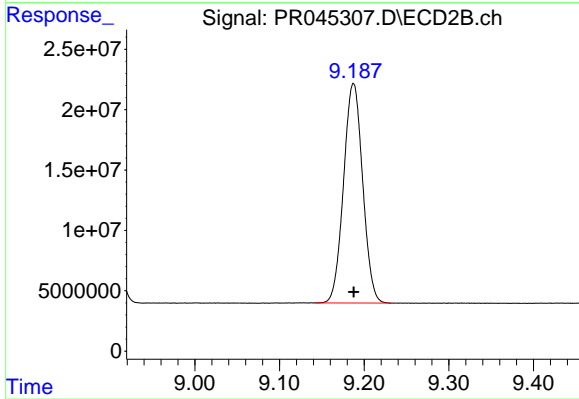
#1 Tetrachloro-m-xylene

R.T.: 4.040 min
 Delta R.T.: 0.000 min
 Response: 267999605
 Conc: 19.44 ng/ml



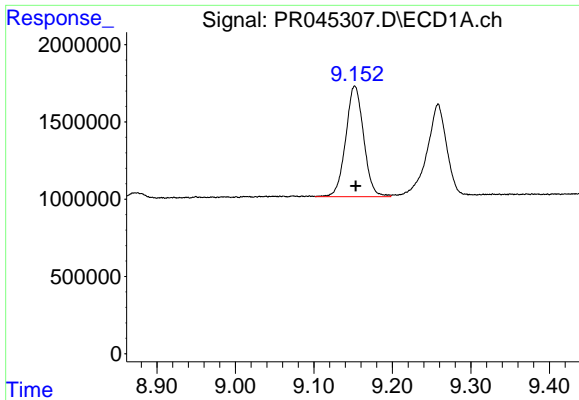
#2 Decachlorobiphenyl

R.T.: 10.823 min
 Delta R.T.: -0.001 min
 Response: 46775885
 Conc: 23.31 ng/ml



#2 Decachlorobiphenyl

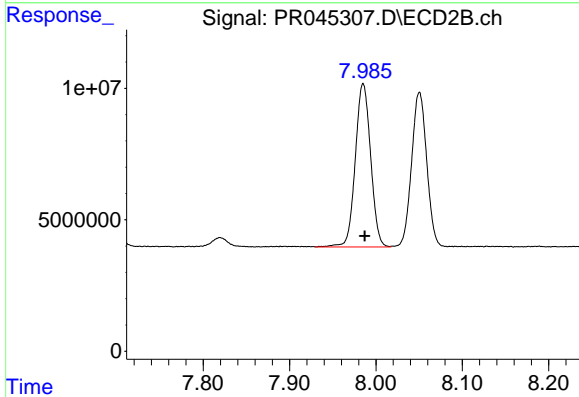
R.T.: 9.187 min
 Delta R.T.: 0.000 min
 Response: 285031525
 Conc: 24.16 ng/ml



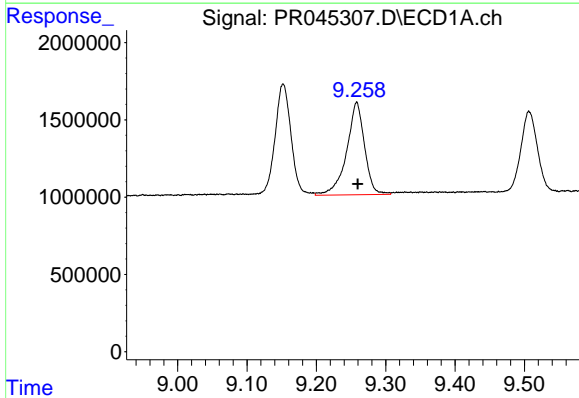
#41 AR-1268-1
 R.T.: 9.152 min
 Delta R.T.: -0.002 min
 Response: 11357261
 Conc: 42.90 ng/ml m

Instrument :
 ECD_R
ClientSampled :
 LOD-MDL-SOIL-01-QT2-2020

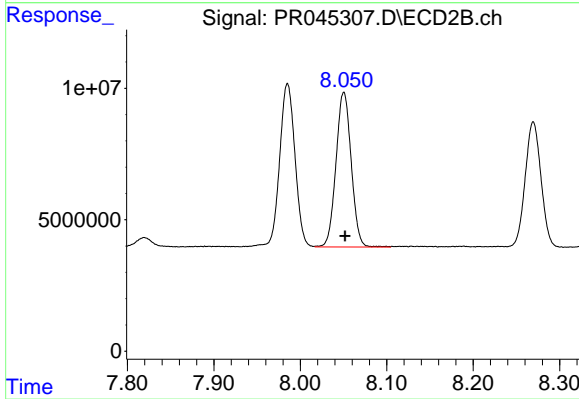
Manual Integrations
APPROVED
 Sohil
 5/18/2020 3:36:19 PM



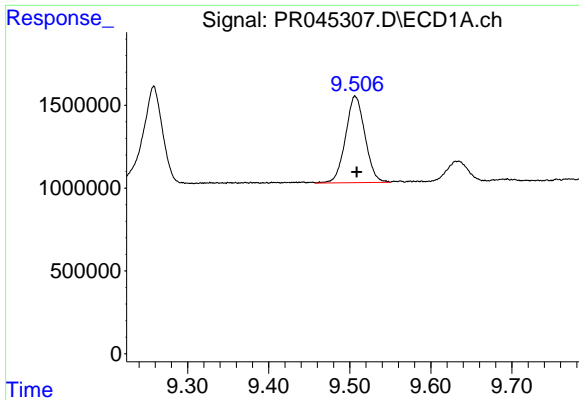
#41 AR-1268-1
 R.T.: 7.985 min
 Delta R.T.: -0.002 min
 Response: 76822513
 Conc: 45.01 ng/ml



#42 AR-1268-2
 R.T.: 9.258 min
 Delta R.T.: -0.002 min
 Response: 10739637
 Conc: 44.43 ng/ml



#42 AR-1268-2
 R.T.: 8.050 min
 Delta R.T.: -0.001 min
 Response: 72117027
 Conc: 45.21 ng/ml



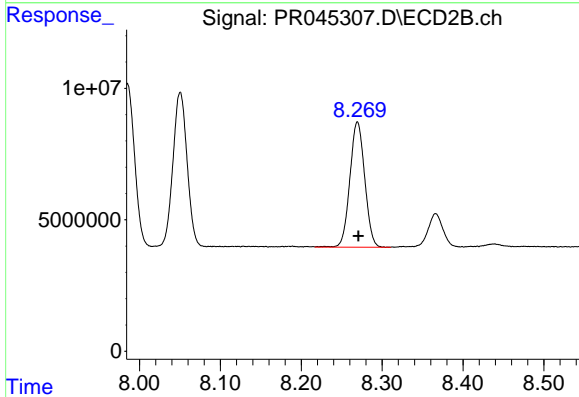
#43 AR-1268-3

R.T.: 9.506 min
 Delta R.T.: -0.003 min
 Response: 8674820
 Conc: 43.28 ng/ml m

Instrument :
 ECD_R
 ClientSampleId :
 LOD-MDL-SOIL-01-QT2-2020

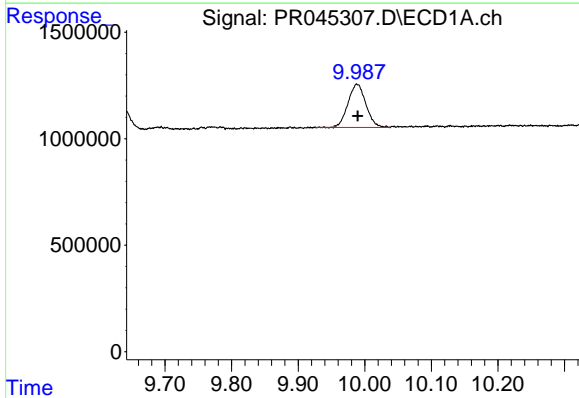
Manual Integrations
 APPROVED

Sohil
 5/18/2020 3:36:19 PM



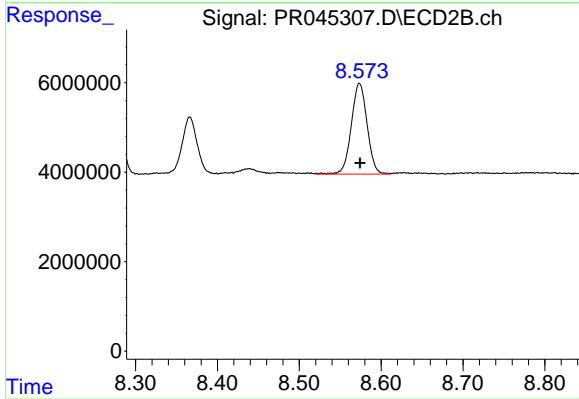
#43 AR-1268-3

R.T.: 8.270 min
 Delta R.T.: -0.001 min
 Response: 60668533
 Conc: 46.63 ng/ml



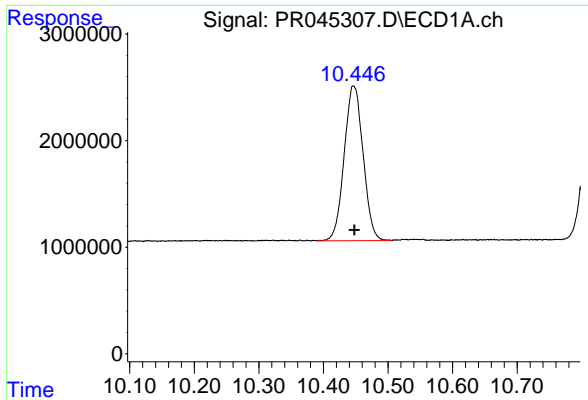
#44 AR-1268-4

R.T.: 9.989 min
 Delta R.T.: 0.000 min
 Response: 3795819
 Conc: 39.06 ng/ml



#44 AR-1268-4

R.T.: 8.574 min
 Delta R.T.: 0.000 min
 Response: 27304219
 Conc: 46.82 ng/ml

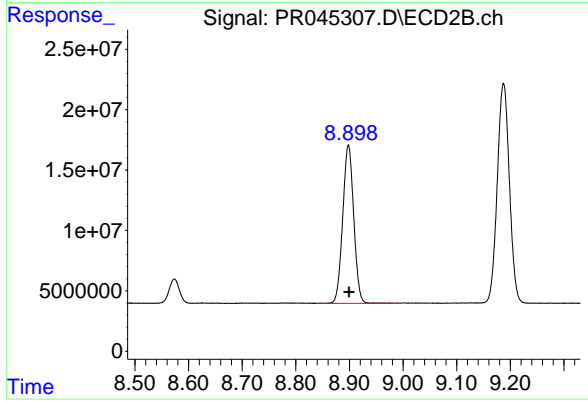


#45 AR-1268-5

R.T.: 10.447 min
Delta R.T.: 0.000 min
Response: 29598416
Conc: 43.38 ng/ml

Instrument :
ECD_R
ClientSampled :
LOD-MDL-SOIL-01-QT2-2020

Manual Integrations
APPROVED
Sohil
5/18/2020 3:36:19 PM



#45 AR-1268-5

R.T.: 8.898 min
Delta R.T.: -0.001 min
Response: 186744765
Conc: 44.41 ng/ml