

Data Path : Z:\pestpcbsrv\HPCHEM1\ECD_R\Data\PR051620\
 Data File : PR045316.D
 Signal(s) : Signal #1: ECD1A.ch Signal #2: ECD2B.ch
 Acq On : 15 May 2020 12:21
 Operator : AJ\MA
 Sample : L2182-07
 Misc : AR1262 40PPB LOD
 ALS Vial : 18 Sample Multiplier: 1

Instrument :
 ECD_R
ClientSampleId :
 LOD-MDL-WATER-01-QT2-2020

Manual Integrations
APPROVED
 Sohil
 5/18/2020 3:36:23 PM

Integration File signal 1: autoint1.e
 Integration File signal 2: autoint2.e
 Quant Time: May 15 23:06:07 2020
 Quant Method : Z:\pestpcbsrv\HPCHEM1\ECD_R\Method\PR051520.M
 Quant Title : GC EXTRACTABLES
 QLast Update : Thu May 14 17:15:31 2020
 Response via : Initial Calibration
 Integrator: ChemStation

Volume Inj. : 2 µl
 Signal #1 Phase : ZB-MR1 Signal #2 Phase: ZB-MR2
 Signal #1 Info : 30Mx0.32mmx 0.50µ Signal #2 Info : 30M x 0.32mm x 0.25µm

Compound	RT#1	RT#2	Resp#1	Resp#2	ng/ml	ng/ml

System Monitoring Compounds						
1) SA Tetrachlo...	4.795	4.040	32751811	248.9E6	16.537	18.054
2) SA Decachlor...	10.825	9.189	42635165	264.2E6	21.242	22.396
Target Compounds						
36) L8 AR-1262-1	8.221	7.158	4793884	18588549	40.545	41.955
37) L8 AR-1262-2	8.816	7.699	8777772	64100253	38.668	40.998
38) L8 AR-1262-3	9.154	7.987	5969924	26352118	61.720m	45.256 #
39) L8 AR-1262-4	9.254	8.051	4573305	48447268	40.753	43.330
40) L8 AR-1262-5	9.989	8.574	3596495	24808870	43.569	47.652

(f)=RT Delta > 1/2 Window (#)=Amounts differ by > 25% (m)=manual int.

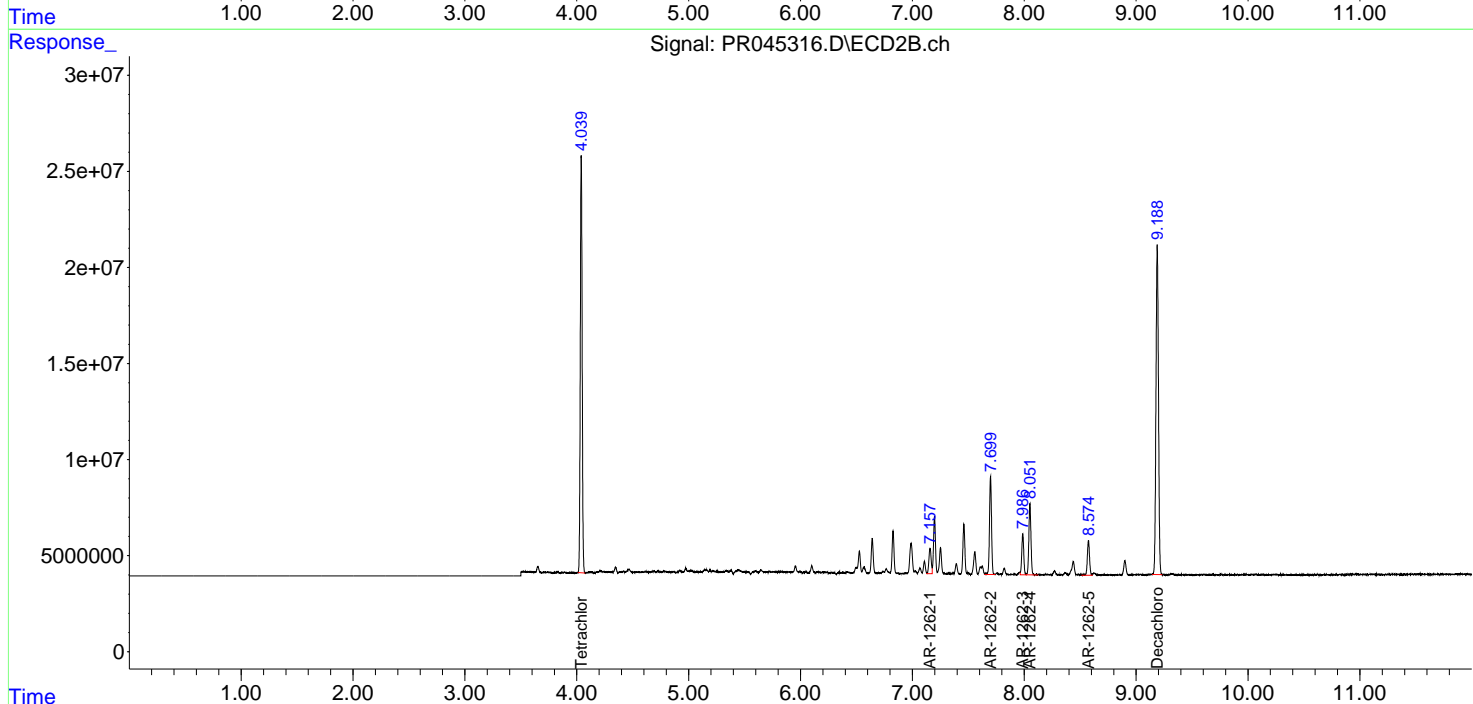
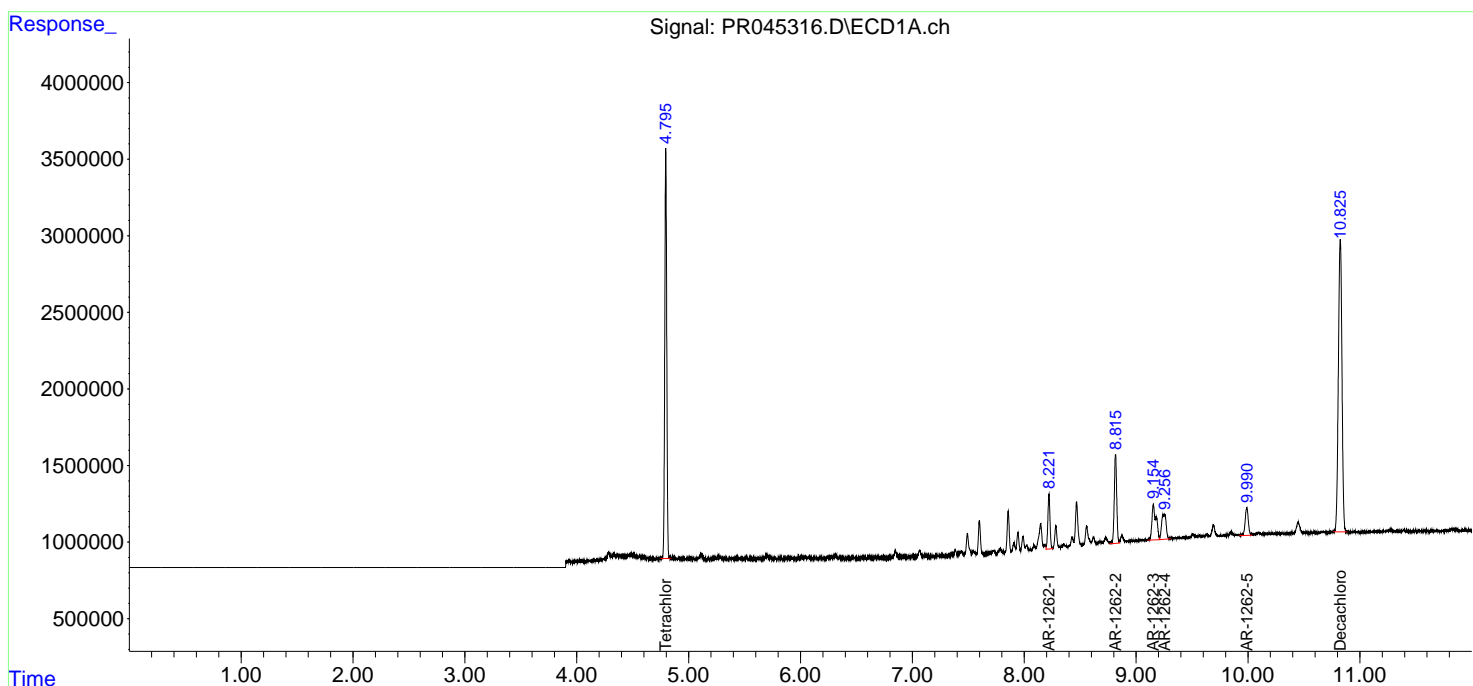
Data Path : Z:\pestpcbsrv\HPCHEM1\ECD_R\Data\PR051620\
 Data File : PR045316.D
 Signal(s) : Signal #1: ECD1A.ch Signal #2: ECD2B.ch
 Acq On : 15 May 2020 12:21
 Operator : AJ\MA
 Sample : L2182-07
 Misc : AR1262 40PPB LOD
 ALS Vial : 18 Sample Multiplier: 1

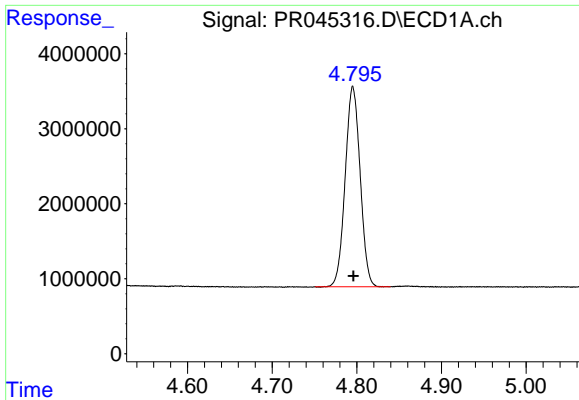
Instrument :
 ECD_R
Client Sampled :
 LOD-MDL-WATER-01-QT2-2020

Manual Integrations
APPROVED
 Sohil
 5/18/2020 3:36:23 PM

Integration File signal 1: autoint1.e
 Integration File signal 2: autoint2.e
 Quant Time: May 15 23:06:07 2020
 Quant Method : Z:\pestpcbsrv\HPCHEM1\ECD_R\Method\PR051520.M
 Quant Title : GC EXTRACTABLES
 QLast Update : Thu May 14 17:15:31 2020
 Response via : Initial Calibration
 Integrator: ChemStation

Volume Inj. : 2 µl
 Signal #1 Phase : ZB-MR1 Signal #2 Phase: ZB-MR2
 Signal #1 Info : 30Mx0.32mmx 0.50µm Signal #2 Info : 30M x 0.32mm x 0.25µm

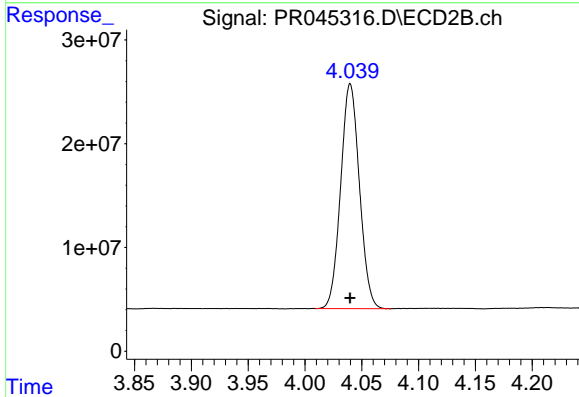




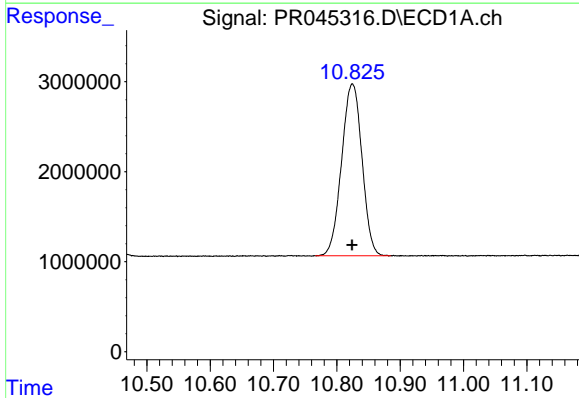
#1 Tetrachloro-m-xylene
 R.T.: 4.795 min
 Delta R.T.: 0.000 min
 Response: 32751811
 Conc: 16.54 ng/ml

Instrument :
 ECD_R
ClientSampled :
 LOD-MDL-WATER-01-QT2-2020

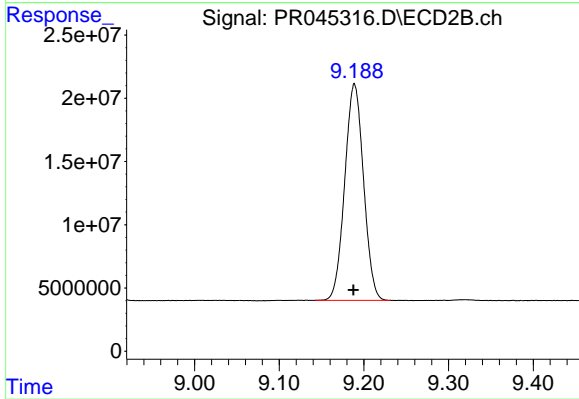
Manual Integrations
APPROVED
 Sohil
 5/18/2020 3:36:23 PM



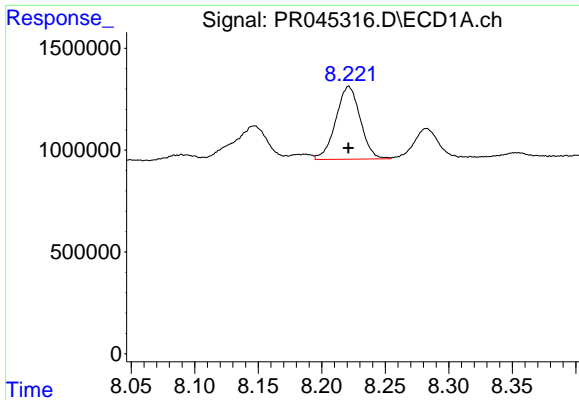
#1 Tetrachloro-m-xylene
 R.T.: 4.040 min
 Delta R.T.: 0.000 min
 Response: 248937890
 Conc: 18.05 ng/ml



#2 Decachlorobiphenyl
 R.T.: 10.825 min
 Delta R.T.: 0.000 min
 Response: 42635165
 Conc: 21.24 ng/ml



#2 Decachlorobiphenyl
 R.T.: 9.189 min
 Delta R.T.: 0.001 min
 Response: 264172874
 Conc: 22.40 ng/ml

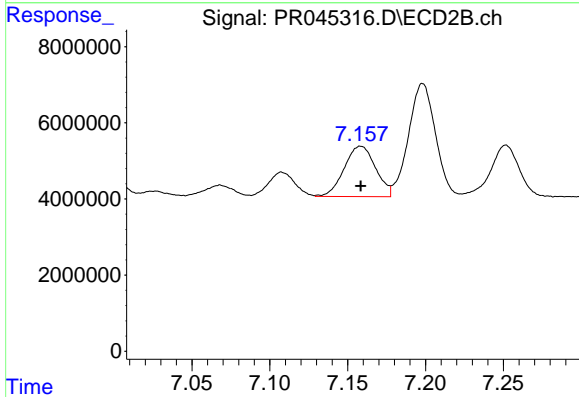


#36 AR-1262-1

R.T.: 8.221 min
 Delta R.T.: 0.000 min
 Response: 4793884
 Conc: 40.54 ng/ml

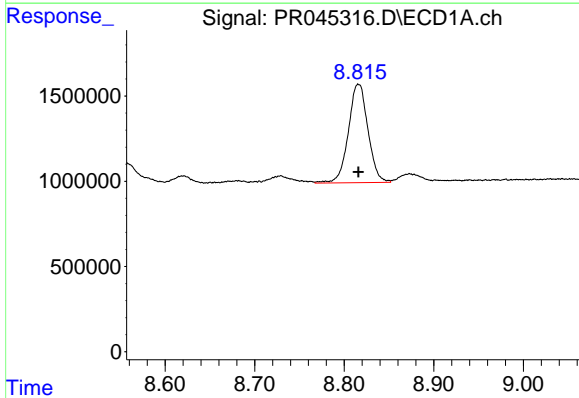
Instrument :
 ECD_R
ClientSampled :
 LOD-MDL-WATER-01-QT2-2020

Manual Integrations
APPROVED
 Sohil
 5/18/2020 3:36:23 PM



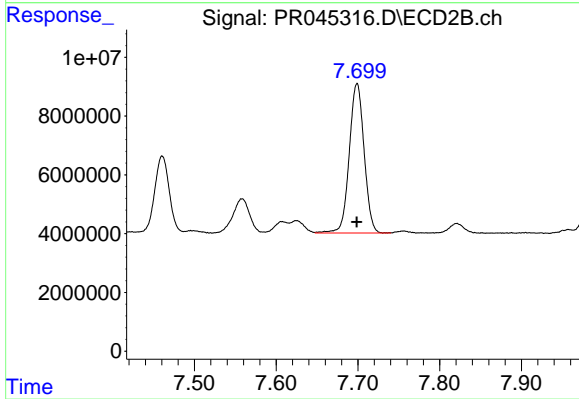
#36 AR-1262-1

R.T.: 7.158 min
 Delta R.T.: 0.000 min
 Response: 18588549
 Conc: 41.96 ng/ml



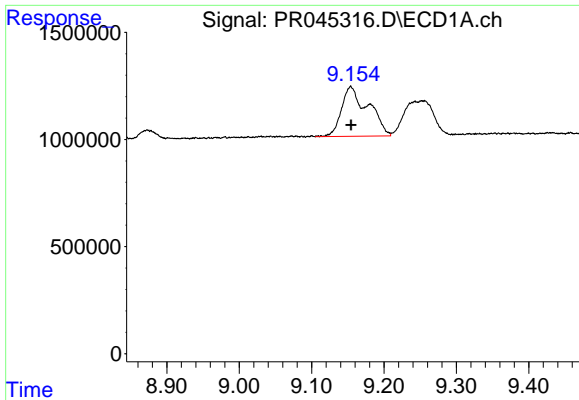
#37 AR-1262-2

R.T.: 8.816 min
 Delta R.T.: 0.000 min
 Response: 8777772
 Conc: 38.67 ng/ml



#37 AR-1262-2

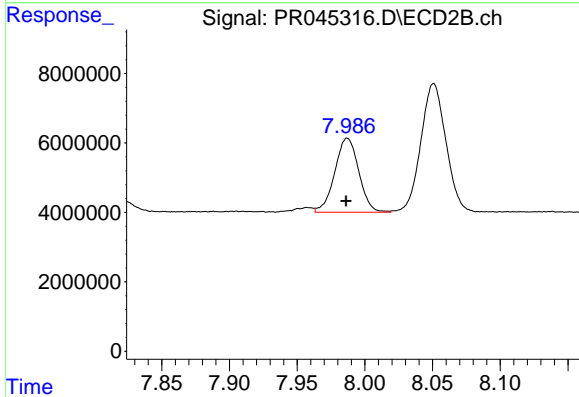
R.T.: 7.699 min
 Delta R.T.: 0.000 min
 Response: 64100253
 Conc: 41.00 ng/ml



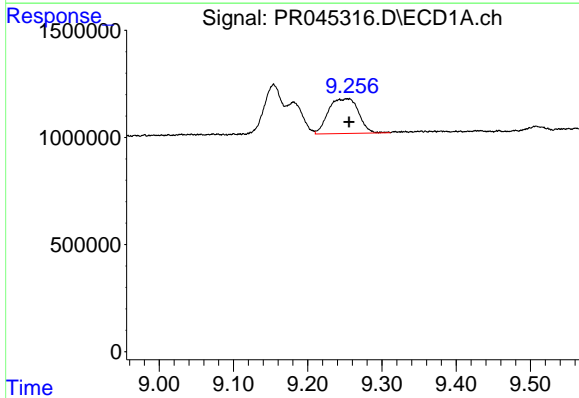
#38 AR-1262-3
 R.T.: 9.154 min
 Delta R.T.: 0.000 min
 Response: 5969924
 Conc: 61.72 ng/ml m

Instrument :
 ECD_R
ClientSampled :
 LOD-MDL-WATER-01-QT2-2020

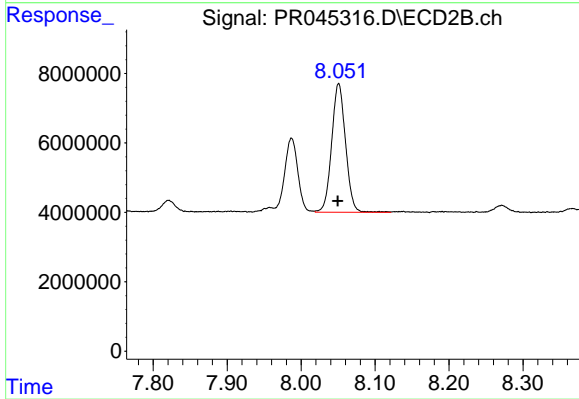
Manual Integrations
APPROVED
 Sohil
 5/18/2020 3:36:23 PM



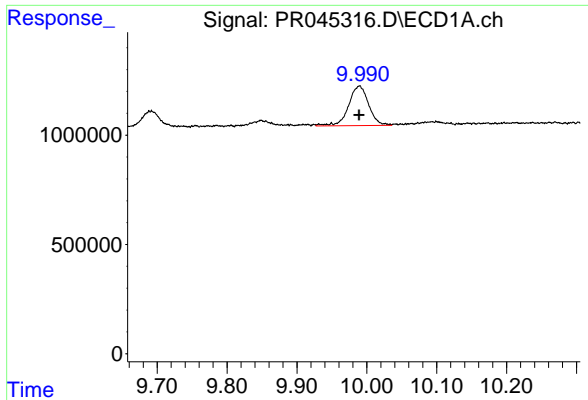
#38 AR-1262-3
 R.T.: 7.987 min
 Delta R.T.: 0.000 min
 Response: 26352118
 Conc: 45.26 ng/ml



#39 AR-1262-4
 R.T.: 9.254 min
 Delta R.T.: -0.002 min
 Response: 4573305
 Conc: 40.75 ng/ml



#39 AR-1262-4
 R.T.: 8.051 min
 Delta R.T.: 0.001 min
 Response: 48447268
 Conc: 43.33 ng/ml



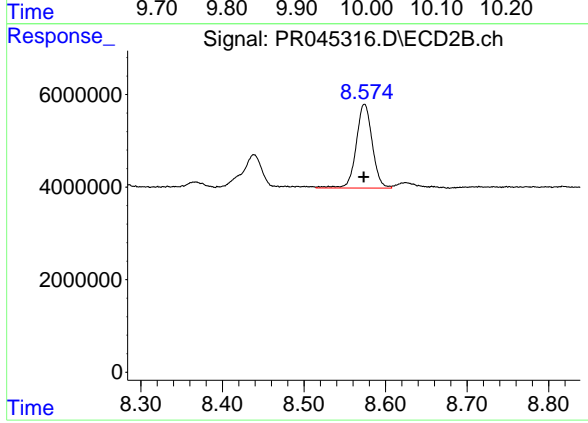
#40 AR-1262-5

R.T.: 9.989 min
Delta R.T.: 0.000 min
Response: 3596495
Conc: 43.57 ng/ml

Instrument :
ECD_R
ClientSampleId :
LOD-MDL-WATER-01-QT2-2020

Manual Integrations
APPROVED

Sohil
5/18/2020 3:36:23 PM



#40 AR-1262-5

R.T.: 8.574 min
Delta R.T.: 0.000 min
Response: 24808870
Conc: 47.65 ng/ml