

Data Path : Z:\pestpcbsrv\HPCHEM1\ECD_R\Data\PR051620\
 Data File : PR045317.D
 Signal(s) : Signal #1: ECD1A.ch Signal #2: ECD2B.ch
 Acq On : 15 May 2020 14:30
 Operator : AJ\MA
 Sample : L2182-07
 Misc : AR1268 40PPB LOD
 ALS Vial : 19 Sample Multiplier: 1

Instrument :
 ECD_R
ClientSampleId :
 LOD-MDL-WATER-01-QT2-2020

Manual Integrations
APPROVED
 Sohil
 5/18/2020 3:36:25 PM

Integration File signal 1: autoint1.e
 Integration File signal 2: autoint2.e
 Quant Time: May 15 23:06:27 2020
 Quant Method : Z:\pestpcbsrv\HPCHEM1\ECD_R\Method\PR051520.M
 Quant Title : GC EXTRACTABLES
 QLast Update : Thu May 14 17:15:31 2020
 Response via : Initial Calibration
 Integrator: ChemStation

Volume Inj. : 2 µl
 Signal #1 Phase : ZB-MR1 Signal #2 Phase: ZB-MR2
 Signal #1 Info : 30Mx0.32mmx 0.50µ Signal #2 Info : 30M x 0.32mm x 0.25µm

Compound	RT#1	RT#2	Resp#1	Resp#2	ng/ml	ng/ml

System Monitoring Compounds						
1) SA Tetrachlo...	4.809	4.038	32077977	241.4E6	16.197m	17.506
2) SA Decachlor...	10.855	9.200	46754957	286.2E6	23.295m	24.266m
Target Compounds						
41) L9 AR-1268-1	9.179	7.996	11242178	79351779	42.470	46.492
42) L9 AR-1268-2	9.285	8.060	10198697	76988149	42.195	48.267
43) L9 AR-1268-3	9.536	8.281	9095859	61206576	45.382	47.039
44) L9 AR-1268-4	10.019	8.585	4201233	28717312	43.235	49.246
45) L9 AR-1268-5	10.480	8.910	29919606	187.5E6	43.854	44.584

(f)=RT Delta > 1/2 Window (#)=Amounts differ by > 25% (m)=manual int.

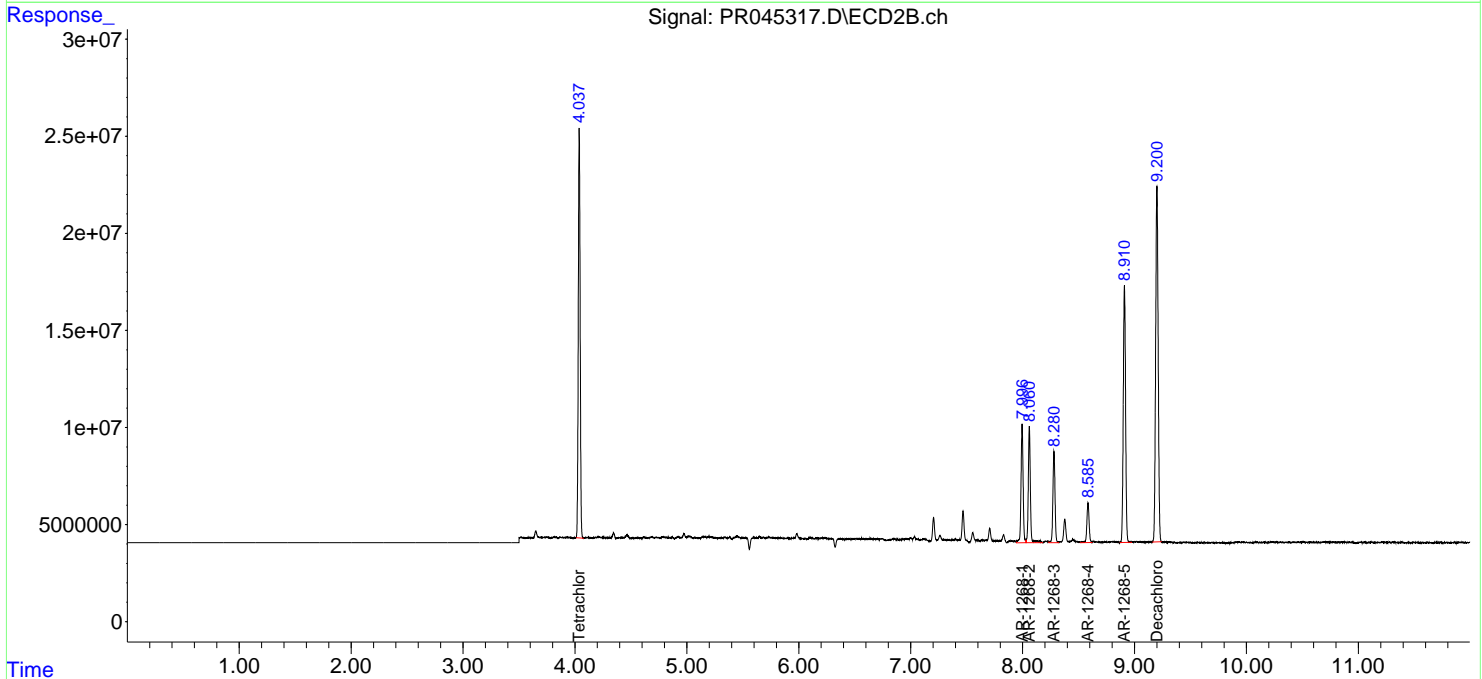
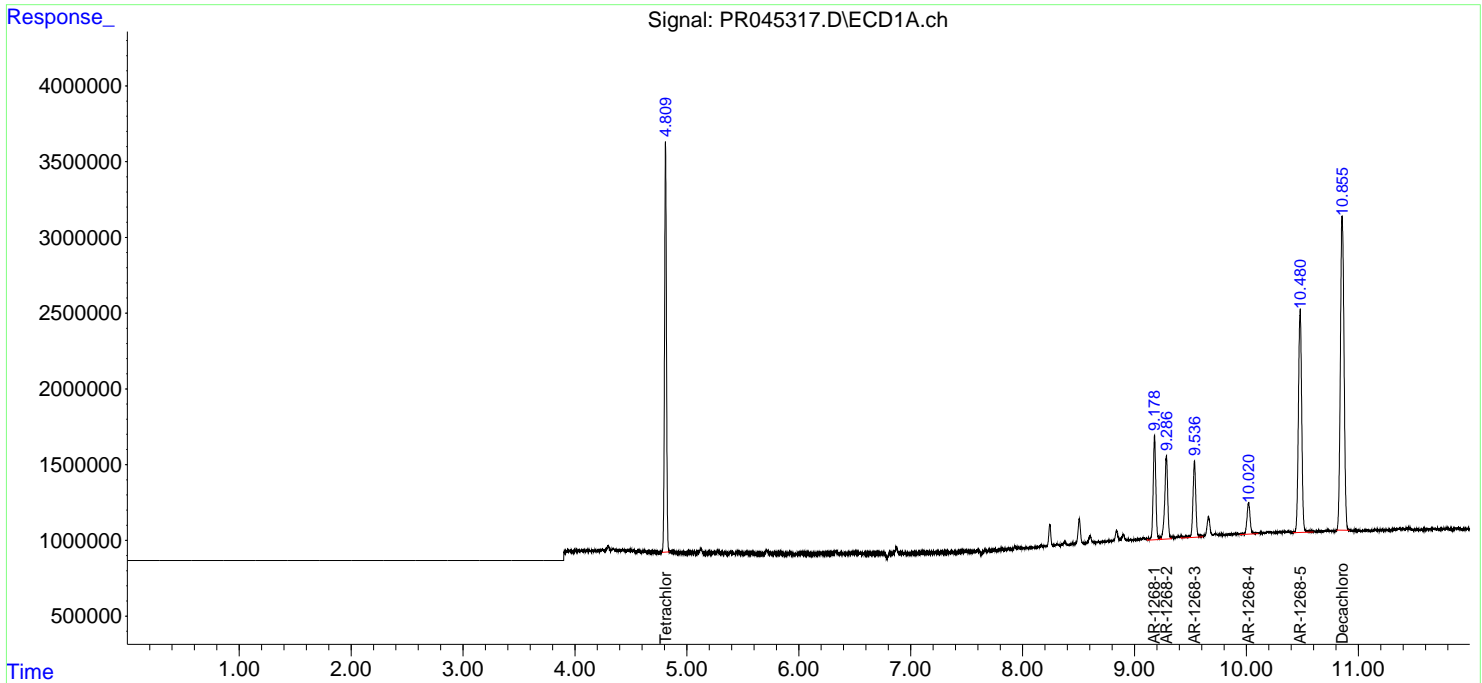
Data Path : Z:\pestpcbsrv\HPCHEM1\ECD_R\Data\PR051620\
 Data File : PR045317.D
 Signal(s) : Signal #1: ECD1A.ch Signal #2: ECD2B.ch
 Acq On : 15 May 2020 14:30
 Operator : AJ\MA
 Sample : L2182-07
 Misc : AR1268 40PPB LOD
 ALS Vial : 19 Sample Multiplier: 1

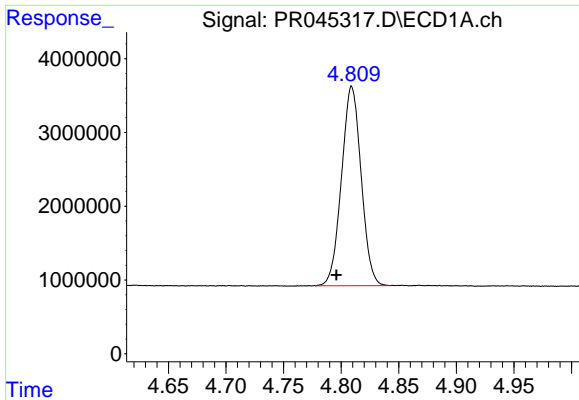
Instrument :
 ECD_R
Client Sampled :
 LOD-MDL-WATER-01-QT2-2020

Manual Integrations
APPROVED
 Sohil
 5/18/2020 3:36:25 PM

Integration File signal 1: autoint1.e
 Integration File signal 2: autoint2.e
 Quant Time: May 15 23:06:27 2020
 Quant Method : Z:\pestpcbsrv\HPCHEM1\ECD_R\Method\PR051520.M
 Quant Title : GC EXTRACTABLES
 QLast Update : Thu May 14 17:15:31 2020
 Response via : Initial Calibration
 Integrator: ChemStation

Volume Inj. : 2 µl
 Signal #1 Phase : ZB-MR1 Signal #2 Phase: ZB-MR2
 Signal #1 Info : 30Mx0.32mmx 0.50µ Signal #2 Info : 30M x 0.32mm x 0.25µm

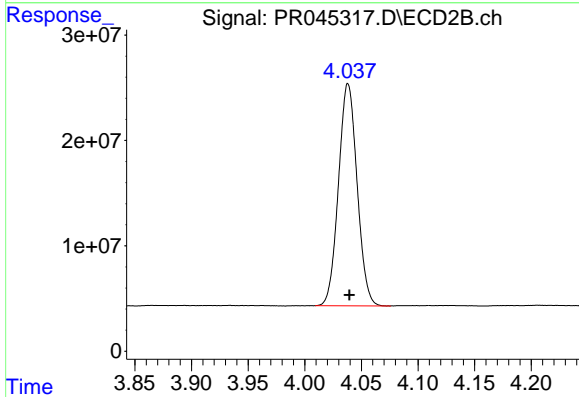




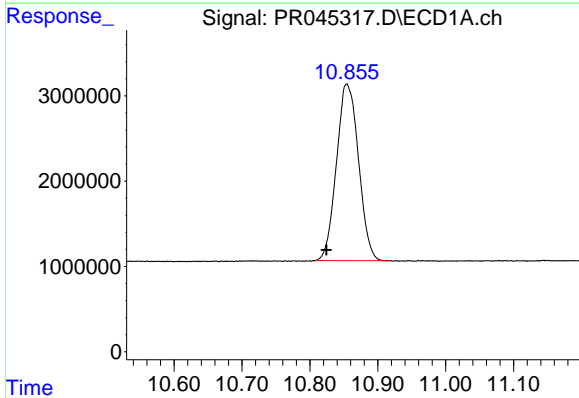
#1 Tetrachloro-m-xylene
 R.T.: 4.809 min
 Delta R.T.: 0.013 min
 Response: 32077977
 Conc: 16.20 ng/ml m

Instrument :
 ECD_R
ClientSampled :
 LOD-MDL-WATER-01-QT2-2020

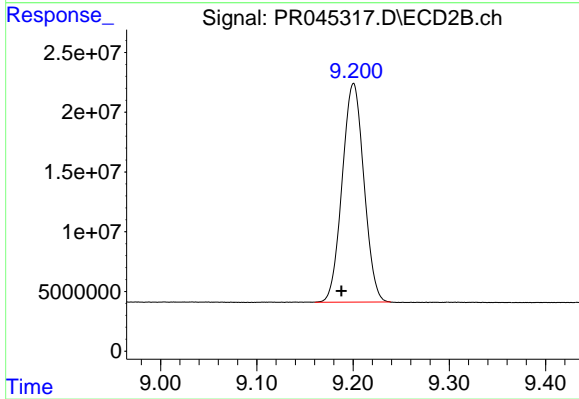
Manual Integrations
APPROVED
 Sohil
 5/18/2020 3:36:25 PM



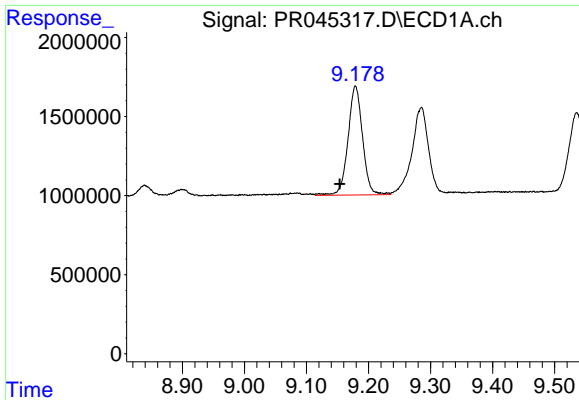
#1 Tetrachloro-m-xylene
 R.T.: 4.038 min
 Delta R.T.: -0.001 min
 Response: 241387401
 Conc: 17.51 ng/ml



#2 Decachlorobiphenyl
 R.T.: 10.855 min
 Delta R.T.: 0.031 min
 Response: 46754957
 Conc: 23.29 ng/ml m



#2 Decachlorobiphenyl
 R.T.: 9.200 min
 Delta R.T.: 0.013 min
 Response: 286229841
 Conc: 24.27 ng/ml m

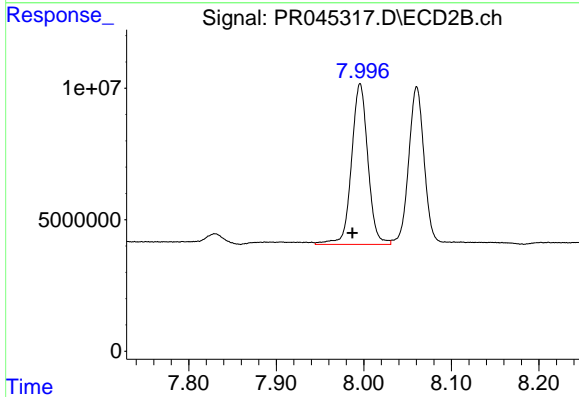


#41 AR-1268-1

R.T.: 9.179 min
 Delta R.T.: 0.026 min
 Response: 11242178
 Conc: 42.47 ng/ml

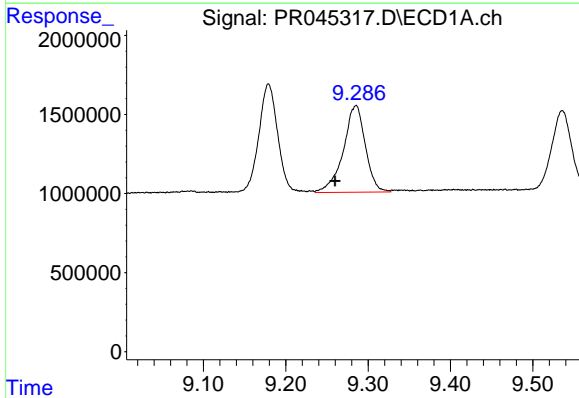
Instrument :
 ECD_R
ClientSampled :
 LOD-MDL-WATER-01-QT2-2020

Manual Integrations
APPROVED
 Sohil
 5/18/2020 3:36:25 PM



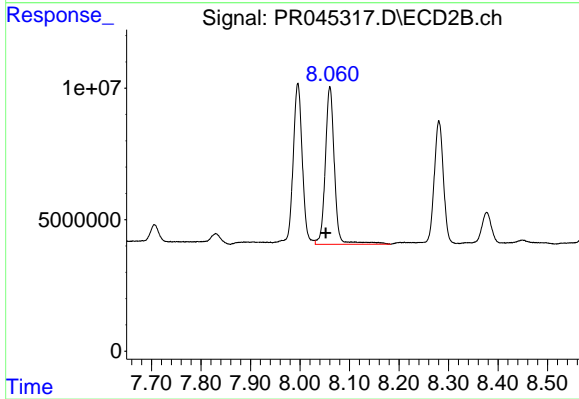
#41 AR-1268-1

R.T.: 7.996 min
 Delta R.T.: 0.009 min
 Response: 79351779
 Conc: 46.49 ng/ml



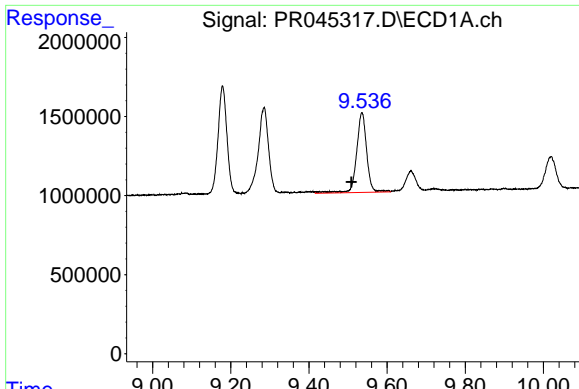
#42 AR-1268-2

R.T.: 9.285 min
 Delta R.T.: 0.026 min
 Response: 10198697
 Conc: 42.19 ng/ml



#42 AR-1268-2

R.T.: 8.060 min
 Delta R.T.: 0.009 min
 Response: 76988149
 Conc: 48.27 ng/ml

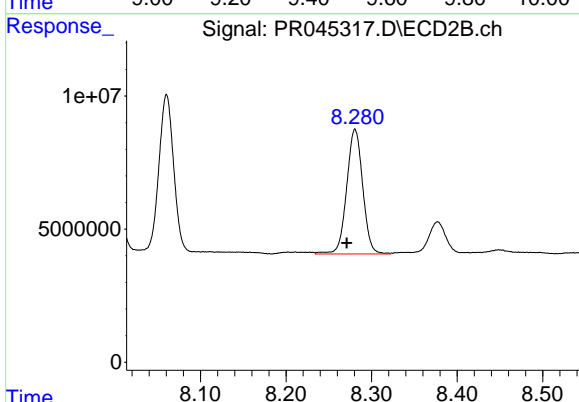


#43 AR-1268-3

R.T.: 9.536 min
 Delta R.T.: 0.027 min
 Response: 9095859
 Conc: 45.38 ng/ml

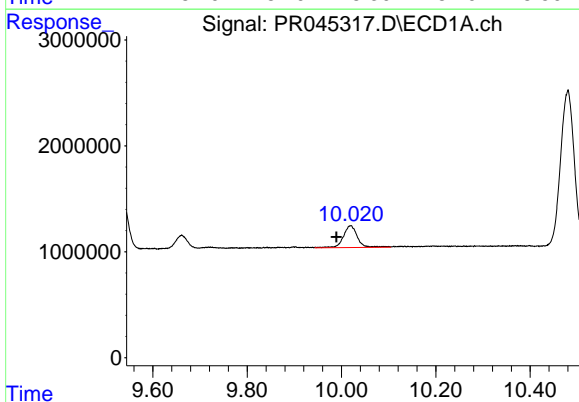
Instrument :
 ECD_R
ClientSampled :
 LOD-MDL-WATER-01-QT2-2020

Manual Integrations
APPROVED
 Sohil
 5/18/2020 3:36:25 PM



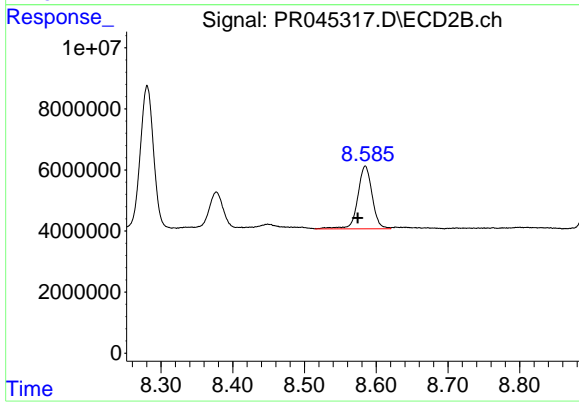
#43 AR-1268-3

R.T.: 8.281 min
 Delta R.T.: 0.010 min
 Response: 61206576
 Conc: 47.04 ng/ml



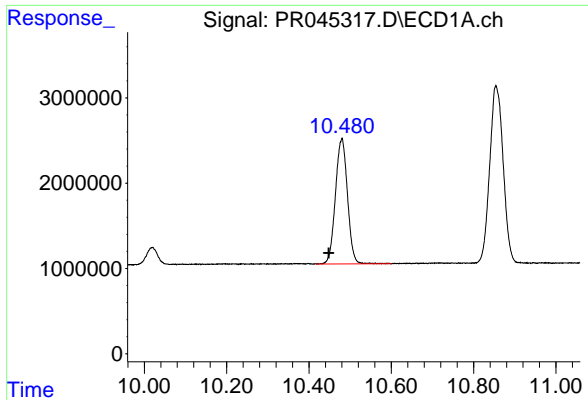
#44 AR-1268-4

R.T.: 10.019 min
 Delta R.T.: 0.030 min
 Response: 4201233
 Conc: 43.24 ng/ml



#44 AR-1268-4

R.T.: 8.585 min
 Delta R.T.: 0.011 min
 Response: 28717312
 Conc: 49.25 ng/ml



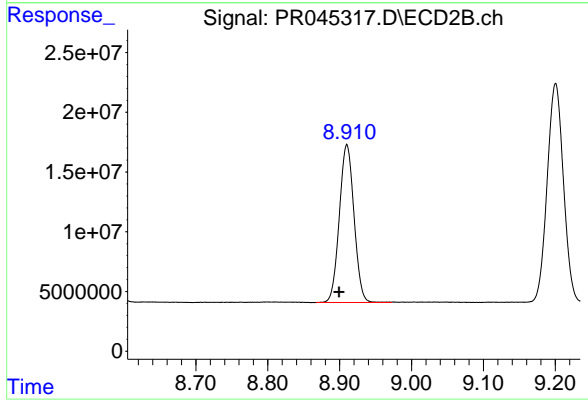
#45 AR-1268-5

R.T.: 10.480 min
Delta R.T.: 0.032 min
Response: 29919606
Conc: 43.85 ng/ml

Instrument :
ECD_R
ClientSampleId :
LOD-MDL-WATER-01-QT2-2020

Manual Integrations
APPROVED

Sohil
5/18/2020 3:36:25 PM



#45 AR-1268-5

R.T.: 8.910 min
Delta R.T.: 0.011 min
Response: 187462597
Conc: 44.58 ng/ml