

Data Path : Z:\pestpcbsrv\HPCHEM1\ECD_R\Data\PR051620\
 Data File : PR045319.D
 Signal(s) : Signal #1: ECD1A.ch Signal #2: ECD2B.ch
 Acq On : 15 May 2020 14:59
 Operator : AJ\MA
 Sample : PB128723BL
 Misc :
 ALS Vial : 21 Sample Multiplier: 1

Instrument :
 ECD_R
 ClientSampleId :
 PB128723BL

Integration File signal 1: autoint1.e
 Integration File signal 2: autoint2.e
 Quant Time: May 15 23:07:17 2020
 Quant Method : Z:\pestpcbsrv\HPCHEM1\ECD_R\Method\PR051520.M
 Quant Title : GC EXTRACTABLES
 QLast Update : Thu May 14 17:15:31 2020
 Response via : Initial Calibration
 Integrator: ChemStation

Volume Inj. : 2 µl
 Signal #1 Phase : ZB-MR1 Signal #2 Phase: ZB-MR2
 Signal #1 Info : 30Mx0.32mmx 0.50µ Signal #2 Info : 30M x 0.32mm x 0.25µm

Compound	RT#1	RT#2	Resp#1	Resp#2	ng/ml	ng/ml

System Monitoring Compounds						
1) SA Tetrachlo...	4.798	4.041	26805327	205.0E6	13.534	14.867
2) SA Decachlor...	10.827	9.190	41143505	254.0E6	20.499	21.533

Target Compounds

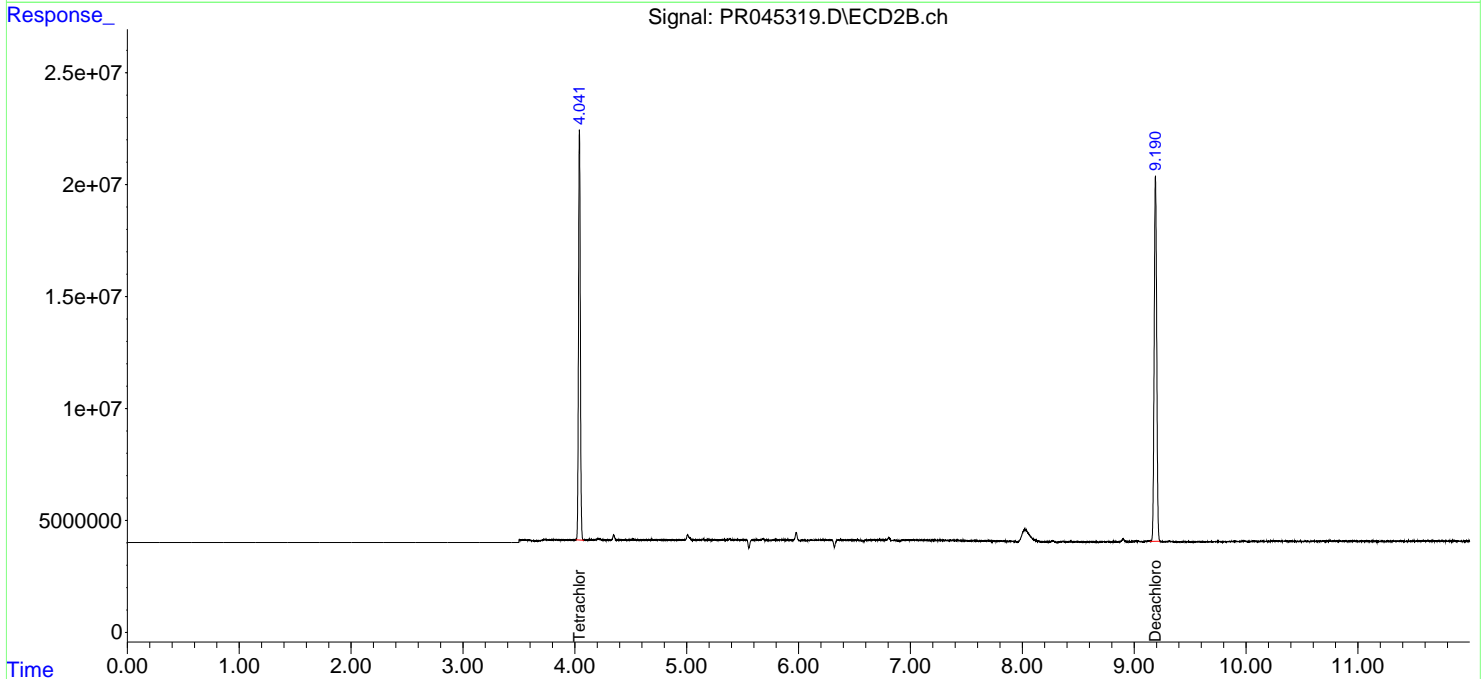
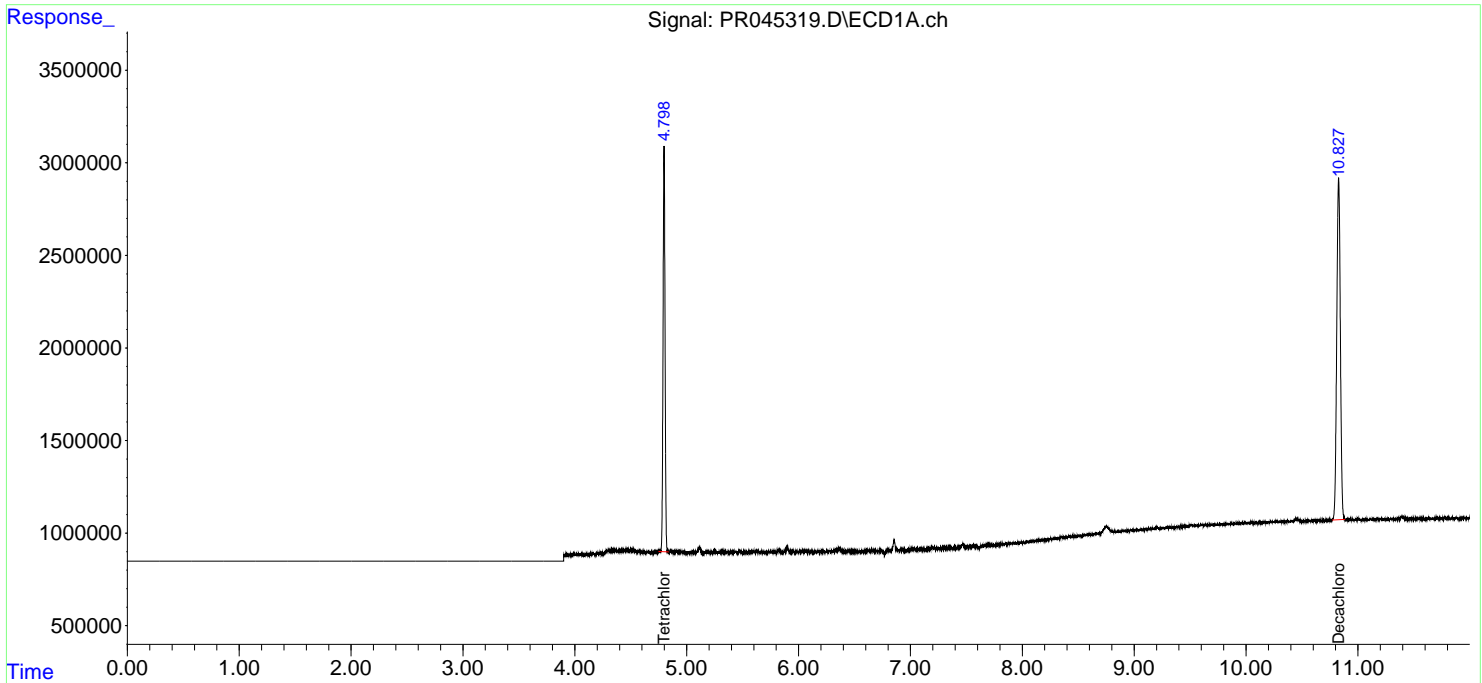
(f)=RT Delta > 1/2 Window (#)=Amounts differ by > 25% (m)=manual int.

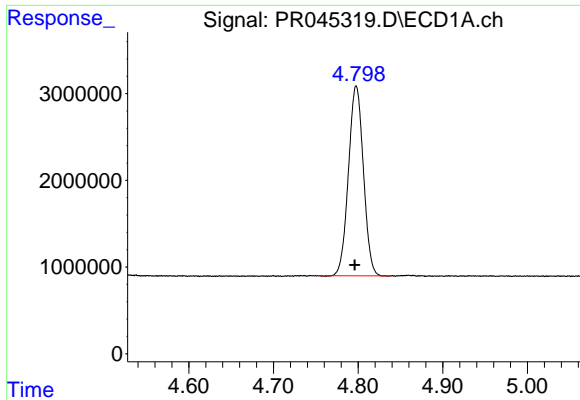
Data Path : Z:\pestpcbsrv\HPCHEM1\ECD_R\Data\PR051620\
 Data File : PR045319.D
 Signal(s) : Signal #1: ECD1A.ch Signal #2: ECD2B.ch
 Acq On : 15 May 2020 14:59
 Operator : AJ\MA
 Sample : PB128723BL
 Misc :
 ALS Vial : 21 Sample Multiplier: 1

Instrument :
 ECD_R
ClientSampled :
 PB128723BL

Integration File signal 1: autoint1.e
 Integration File signal 2: autoint2.e
 Quant Time: May 15 23:07:17 2020
 Quant Method : Z:\pestpcbsrv\HPCHEM1\ECD_R\Method\PR051520.M
 Quant Title : GC EXTRACTABLES
 QLast Update : Thu May 14 17:15:31 2020
 Response via : Initial Calibration
 Integrator: ChemStation

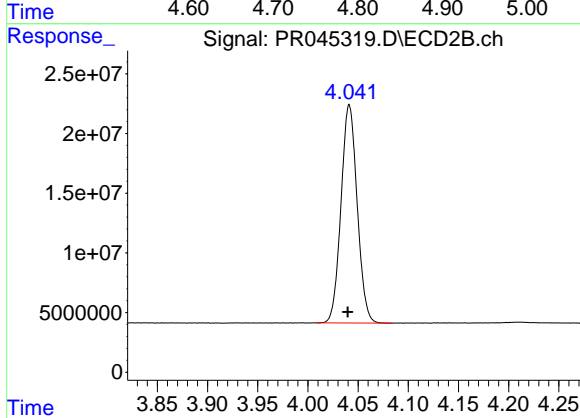
Volume Inj. : 2 µl
 Signal #1 Phase : ZB-MR1 Signal #2 Phase: ZB-MR2
 Signal #1 Info : 30Mx0.32mmx 0.50µ Signal #2 Info : 30M x 0.32mm x 0.25µm



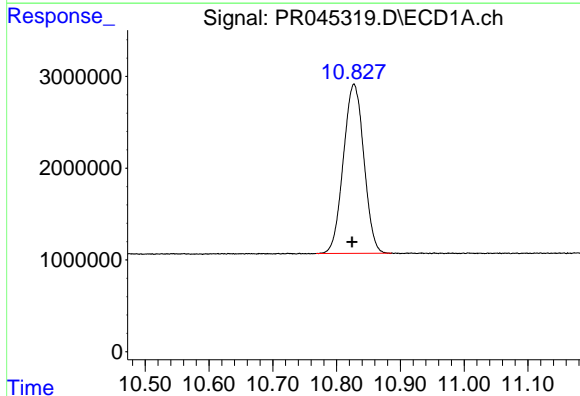


#1 Tetrachloro-m-xylene
 R.T.: 4.798 min
 Delta R.T.: 0.002 min
 Response: 26805327
 Conc: 13.53 ng/ml

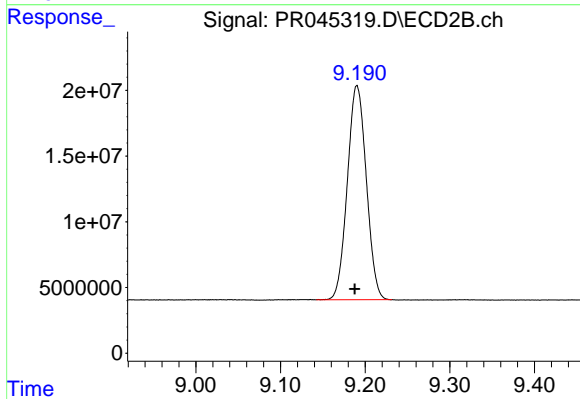
Instrument :
 ECD_R
 ClientSampleId :
 PB128723BL



#1 Tetrachloro-m-xylene
 R.T.: 4.041 min
 Delta R.T.: 0.002 min
 Response: 204991536
 Conc: 14.87 ng/ml



#2 Decachlorobiphenyl
 R.T.: 10.827 min
 Delta R.T.: 0.003 min
 Response: 41143505
 Conc: 20.50 ng/ml



#2 Decachlorobiphenyl
 R.T.: 9.190 min
 Delta R.T.: 0.002 min
 Response: 253993824
 Conc: 21.53 ng/ml