

Data Path : Z:\pestpcbsrv\HPCHEM1\ECD_R\Data\PR051620\
 Data File : PR045327.D
 Signal(s) : Signal #1: ECD1A.ch Signal #2: ECD2B.ch
 Acq On : 16 May 2020 00:01
 Operator : AJ\MA
 Sample : L2182-01
 Misc : AR1254 25PPB LOD
 ALS Vial : 27 Sample Multiplier: 1

Instrument :
 ECD_R
ClientSampleId :
 LOD-MDL-SOIL-01-QT2-2020

Integration File signal 1: autoint1.e
 Integration File signal 2: autoint2.e
 Quant Time: May 16 07:25:08 2020
 Quant Method : Z:\pestpcbsrv\HPCHEM1\ECD_R\Method\PR051520.M
 Quant Title : GC EXTRACTABLES
 QLast Update : Thu May 14 17:15:31 2020
 Response via : Initial Calibration
 Integrator: ChemStation

Volume Inj. : 2 µl
 Signal #1 Phase : ZB-MR1 Signal #2 Phase: ZB-MR2
 Signal #1 Info : 30Mx0.32mmx 0.50µ Signal #2 Info : 30M x 0.32mm x 0.25µm

Compound	RT#1	RT#2	Resp#1	Resp#2	ng/ml	ng/ml

System Monitoring Compounds						
1) SA Tetrachlo...	4.796	4.037	37676145	284.8E6	19.023	20.654
2) SA Decachlor...	10.821	9.182	52025252	326.7E6	25.921	27.697
Target Compounds						
26) L6 AR-1254-1	6.847	5.950	2069595	21577944	31.336	33.952
27) L6 AR-1254-2	7.064	6.098	3218172	19476563	31.143	35.612
28) L6 AR-1254-3	7.438	6.506	3332252	29026673	29.520	31.736
29) L6 AR-1254-4	7.725	6.734	2582697	19389653	29.887	32.906
30) L6 AR-1254-5	8.147	7.155	2772454	24087713	29.009	30.535

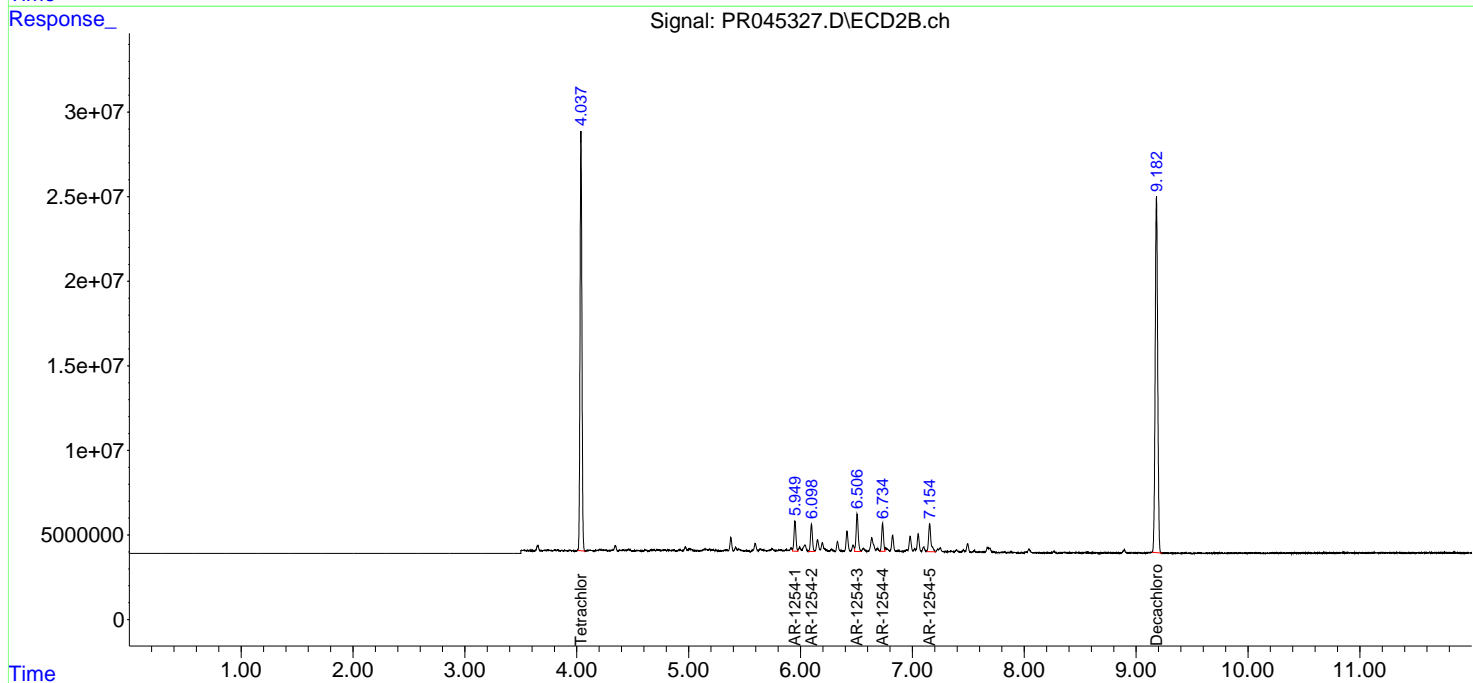
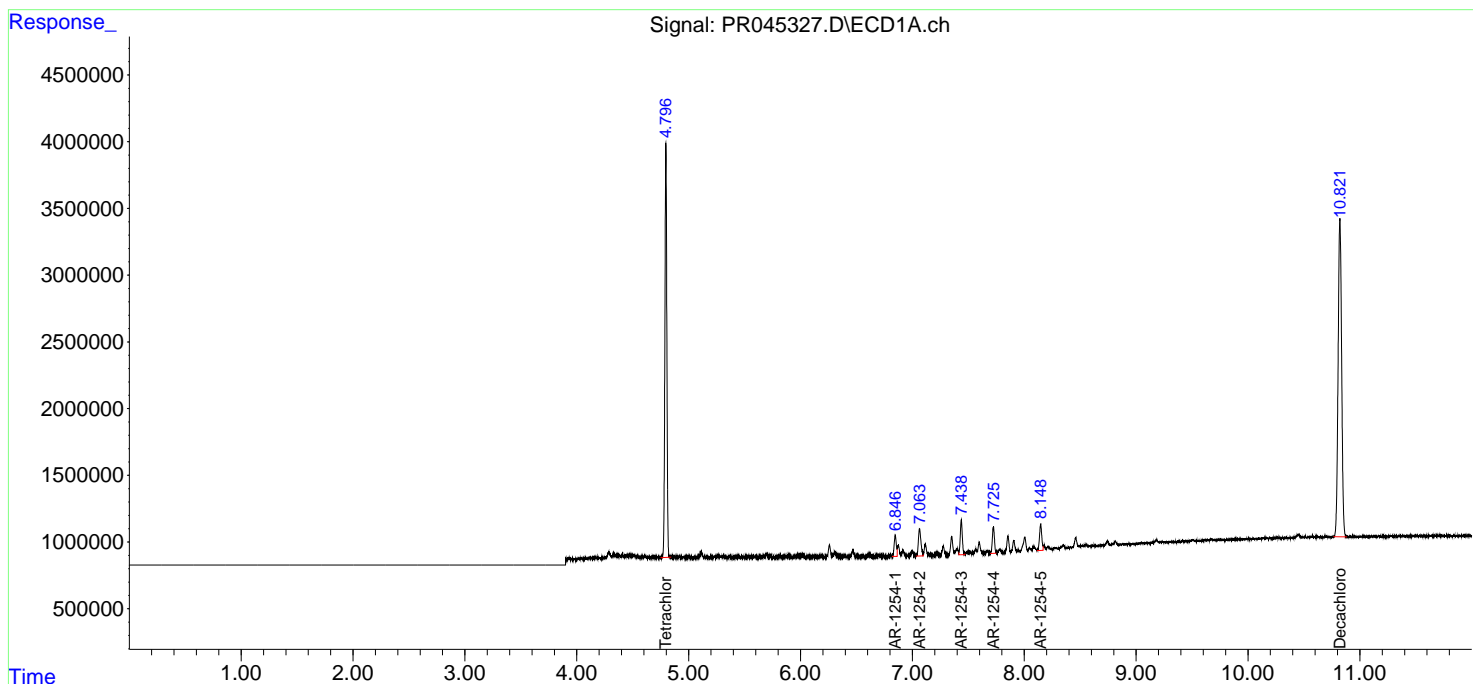
(f)=RT Delta > 1/2 Window (#)=Amounts differ by > 25% (m)=manual int.

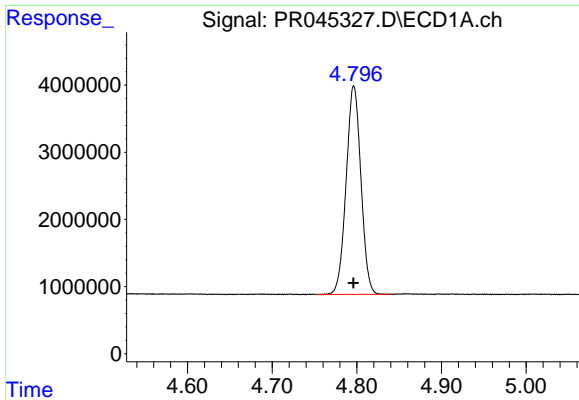
Data Path : Z:\pestpcbsrv\HPCHEM1\ECD_R\Data\PR051620\
 Data File : PR045327.D
 Signal(s) : Signal #1: ECD1A.ch Signal #2: ECD2B.ch
 Acq On : 16 May 2020 00:01
 Operator : AJ\MA
 Sample : L2182-01
 Misc : AR1254 25PPB LOD
 ALS Vial : 27 Sample Multiplier: 1

Instrument :
 ECD_R
 ClientSampleId :
 LOD-MDL-SOIL-01-QT2-2020

Integration File signal 1: autoint1.e
 Integration File signal 2: autoint2.e
 Quant Time: May 16 07:25:08 2020
 Quant Method : Z:\pestpcbsrv\HPCHEM1\ECD_R\Method\PR051520.M
 Quant Title : GC EXTRACTABLES
 QLast Update : Thu May 14 17:15:31 2020
 Response via : Initial Calibration
 Integrator: ChemStation

Volume Inj. : 2 µl
 Signal #1 Phase : ZB-MR1 Signal #2 Phase: ZB-MR2
 Signal #1 Info : 30Mx0.32mmx 0.50µm Signal #2 Info : 30M x 0.32mm x 0.25µm

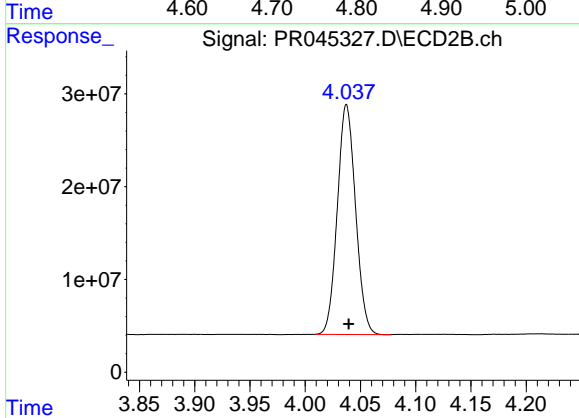




#1 Tetrachloro-m-xylene

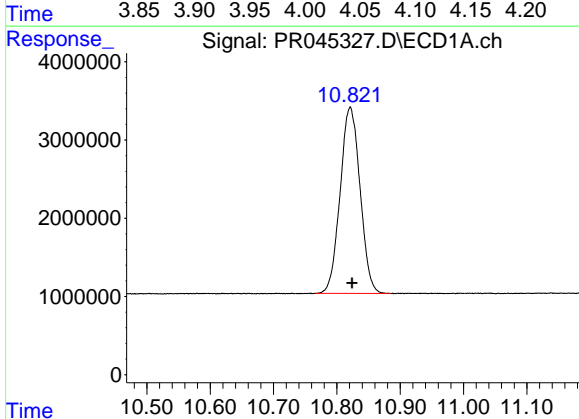
R.T.: 4.796 min
Delta R.T.: 0.000 min
Response: 37676145
Conc: 19.02 ng/ml

Instrument :
ECD_R
ClientSampleId :
LOD-MDL-SOIL-01-QT2-2020



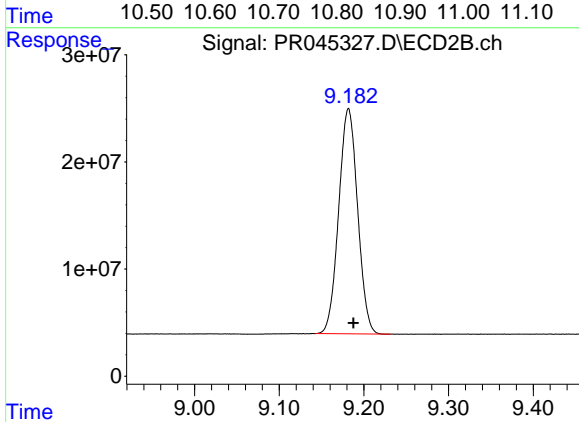
#1 Tetrachloro-m-xylene

R.T.: 4.037 min
Delta R.T.: -0.002 min
Response: 284785159
Conc: 20.65 ng/ml



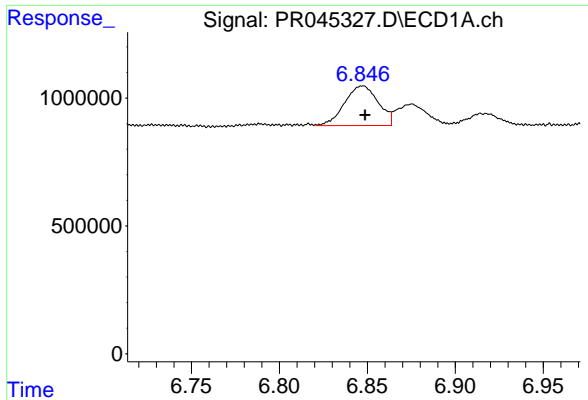
#2 Decachlorobiphenyl

R.T.: 10.821 min
Delta R.T.: -0.003 min
Response: 52025252
Conc: 25.92 ng/ml



#2 Decachlorobiphenyl

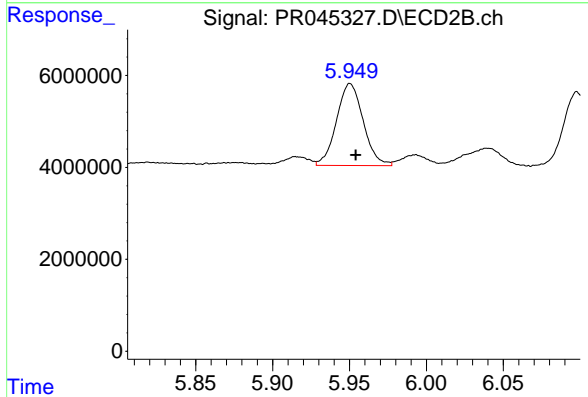
R.T.: 9.182 min
Delta R.T.: -0.006 min
Response: 326698885
Conc: 27.70 ng/ml



#26 AR-1254-1

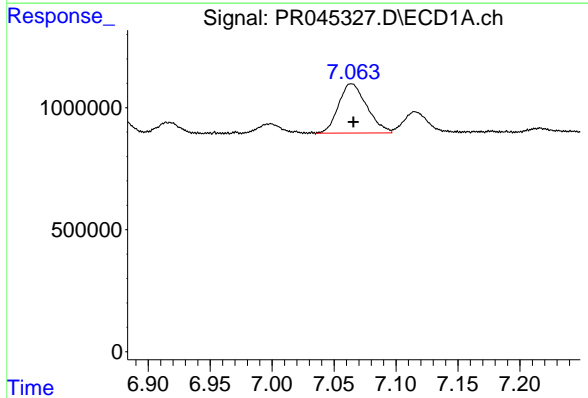
R.T.: 6.847 min
 Delta R.T.: -0.001 min
 Response: 2069595
 Conc: 31.34 ng/ml

Instrument :
 ECD_R
 ClientSampleId :
 LOD-MDL-SOIL-01-QT2-2020



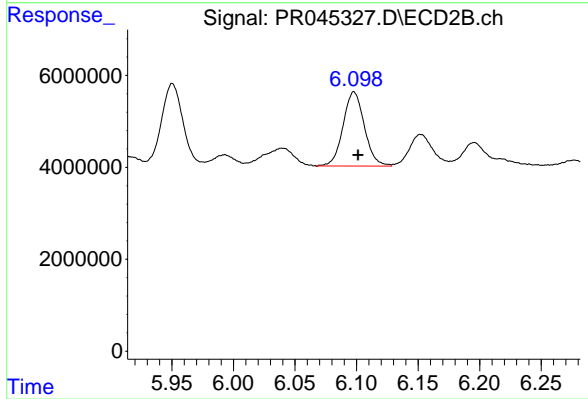
#26 AR-1254-1

R.T.: 5.950 min
 Delta R.T.: -0.004 min
 Response: 21577944
 Conc: 33.95 ng/ml



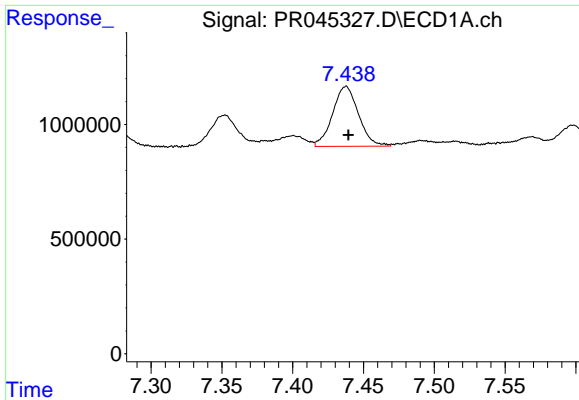
#27 AR-1254-2

R.T.: 7.064 min
 Delta R.T.: -0.002 min
 Response: 3218172
 Conc: 31.14 ng/ml



#27 AR-1254-2

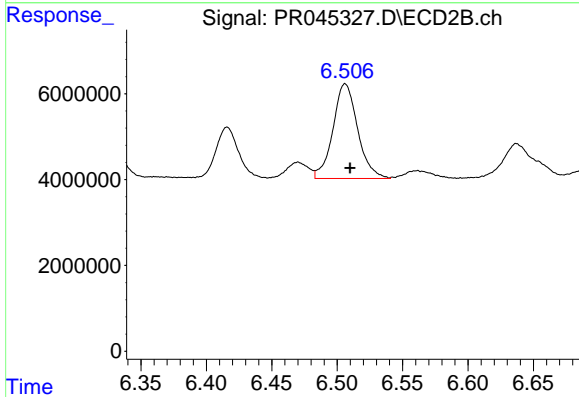
R.T.: 6.098 min
 Delta R.T.: -0.003 min
 Response: 19476563
 Conc: 35.61 ng/ml



#28 AR-1254-3

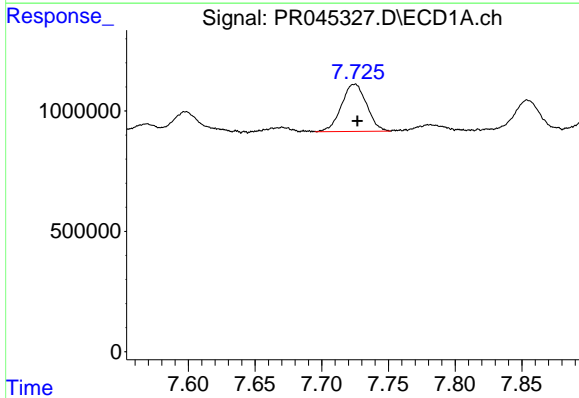
R.T.: 7.438 min
 Delta R.T.: -0.002 min
 Response: 3332252
 Conc: 29.52 ng/ml

Instrument :
 ECD_R
 ClientSampleId :
 LOD-MDL-SOIL-01-QT2-2020



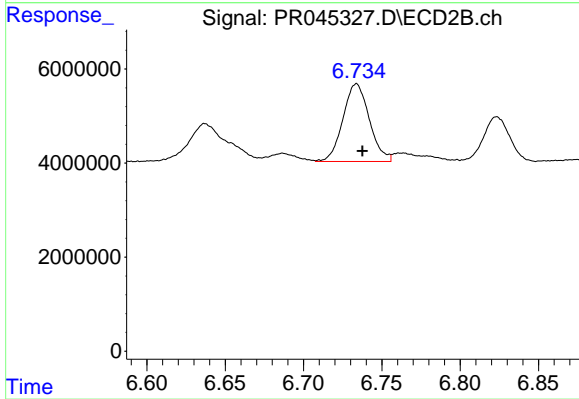
#28 AR-1254-3

R.T.: 6.506 min
 Delta R.T.: -0.004 min
 Response: 29026673
 Conc: 31.74 ng/ml



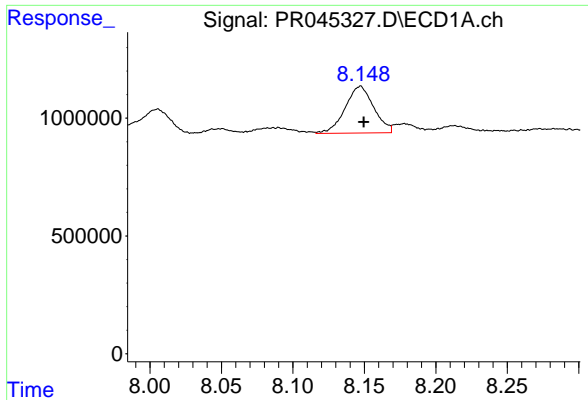
#29 AR-1254-4

R.T.: 7.725 min
 Delta R.T.: -0.002 min
 Response: 2582697
 Conc: 29.89 ng/ml



#29 AR-1254-4

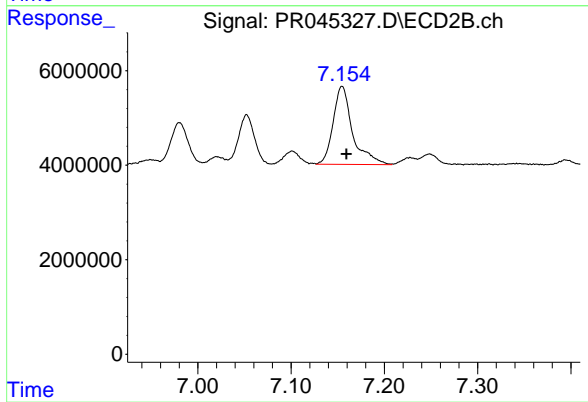
R.T.: 6.734 min
 Delta R.T.: -0.004 min
 Response: 19389653
 Conc: 32.91 ng/ml



#30 AR-1254-5

R.T.: 8.147 min
Delta R.T.: -0.002 min
Response: 2772454
Conc: 29.01 ng/ml

Instrument :
ECD_R
ClientSampleId :
LOD-MDL-SOIL-01-QT2-2020



#30 AR-1254-5

R.T.: 7.155 min
Delta R.T.: -0.005 min
Response: 24087713
Conc: 30.54 ng/ml