

Data Path : Z:\pestpcbsrv\HPCHEM1\ECD_R\Data\PR051620\
 Data File : PR045328.D
 Signal(s) : Signal #1: ECD1A.ch Signal #2: ECD2B.ch
 Acq On : 16 May 2020 00:15
 Operator : AJ\MA
 Sample : L2182-01
 Misc : AR1262 25PPB LOD
 ALS Vial : 28 Sample Multiplier: 1

Instrument :
 ECD_R
ClientSampleId :
 LOD-MDL-SOIL-01-QT2-2020

Integration File signal 1: autoint1.e
 Integration File signal 2: autoint2.e
 Quant Time: May 16 07:25:36 2020
 Quant Method : Z:\pestpcbsrv\HPCHEM1\ECD_R\Method\PR051520.M
 Quant Title : GC EXTRACTABLES
 QLast Update : Thu May 14 17:15:31 2020
 Response via : Initial Calibration
 Integrator: ChemStation

Volume Inj. : 2 µl
 Signal #1 Phase : ZB-MR1 Signal #2 Phase: ZB-MR2
 Signal #1 Info : 30Mx0.32mmx 0.50µ Signal #2 Info : 30M x 0.32mm x 0.25µm

Compound	RT#1	RT#2	Resp#1	Resp#2	ng/ml	ng/ml

System Monitoring Compounds						
1) SA Tetrachlo...	4.797	4.038	38372568	292.8E6	19.375	21.239
2) SA Decachlor...	10.823	9.182	53716671	338.2E6	26.763	28.675
Target Compounds						
36) L8 AR-1262-1	8.219	7.154	3027420	11952507	25.605	26.977
37) L8 AR-1262-2	8.814	7.694	5531449	40727767	24.367	26.049
38) L8 AR-1262-3	9.152	7.982	2711663	16914367	28.034	29.048
39) L8 AR-1262-4	9.255	8.045	1905587	31280927	16.981	27.977 #
40) L8 AR-1262-5	9.987	8.569	2128186	16343183	25.781	31.392

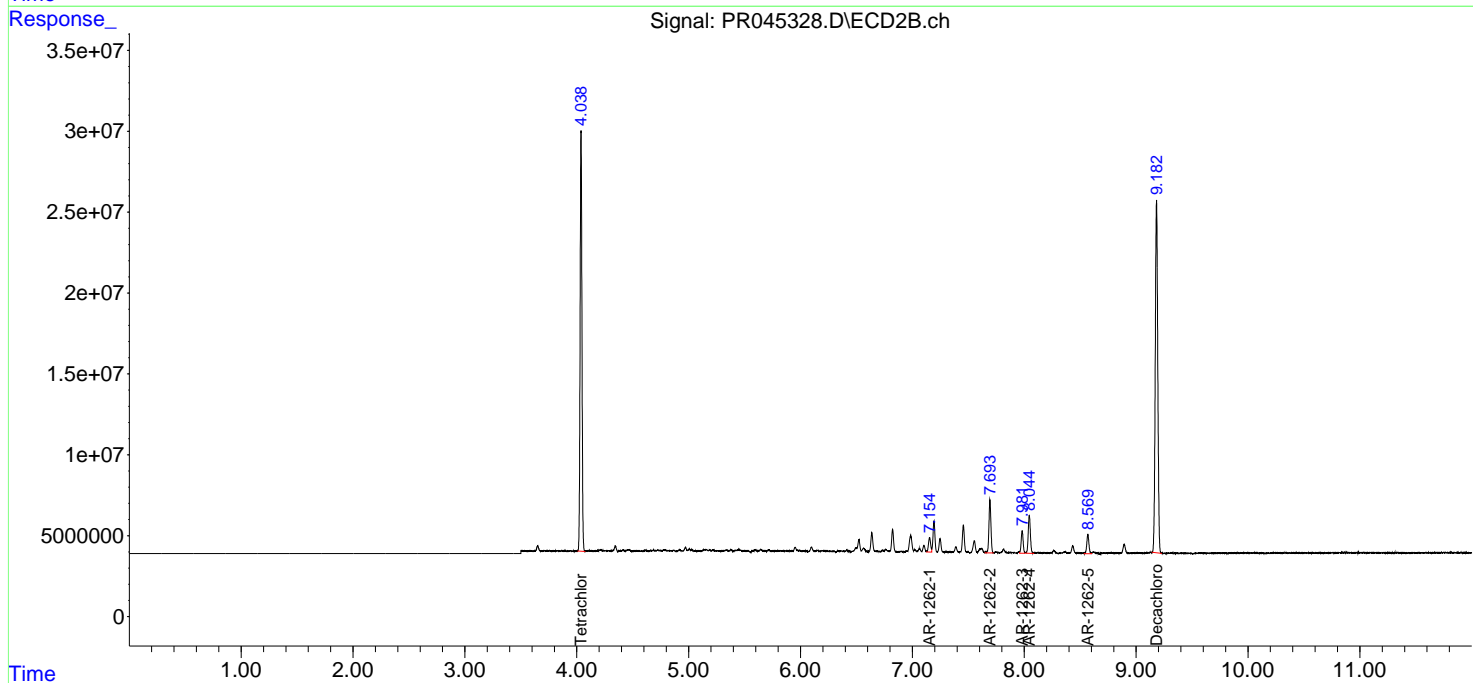
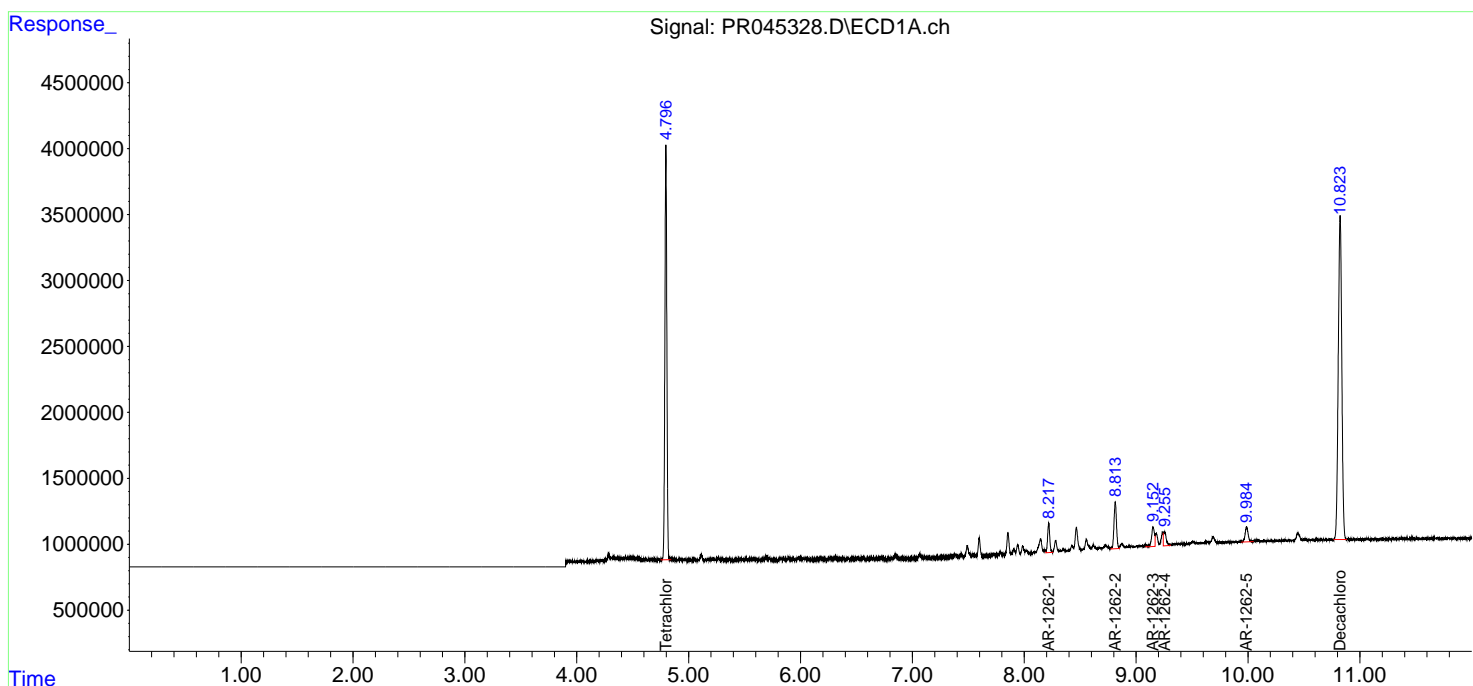
(f)=RT Delta > 1/2 Window (#)=Amounts differ by > 25% (m)=manual int.

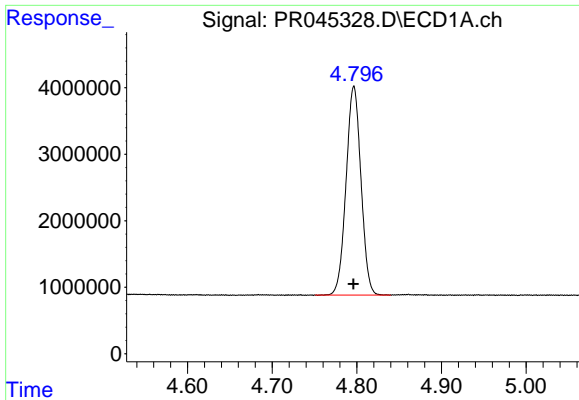
Data Path : Z:\pestpcbsrv\HPCHEM1\ECD_R\Data\PR051620\
 Data File : PR045328.D
 Signal(s) : Signal #1: ECD1A.ch Signal #2: ECD2B.ch
 Acq On : 16 May 2020 00:15
 Operator : AJ\MA
 Sample : L2182-01
 Misc : AR1262 25PPB LOD
 ALS Vial : 28 Sample Multiplier: 1

Instrument :
 ECD_R
 ClientSampled :
 LOD-MDL-SOIL-01-QT2-2020

Integration File signal 1: autoint1.e
 Integration File signal 2: autoint2.e
 Quant Time: May 16 07:25:36 2020
 Quant Method : Z:\pestpcbsrv\HPCHEM1\ECD_R\Method\PR051520.M
 Quant Title : GC EXTRACTABLES
 QLast Update : Thu May 14 17:15:31 2020
 Response via : Initial Calibration
 Integrator: ChemStation

Volume Inj. : 2 µl
 Signal #1 Phase : ZB-MR1 Signal #2 Phase: ZB-MR2
 Signal #1 Info : 30Mx0.32mmx 0.50µ Signal #2 Info : 30M x 0.32mm x 0.25µm

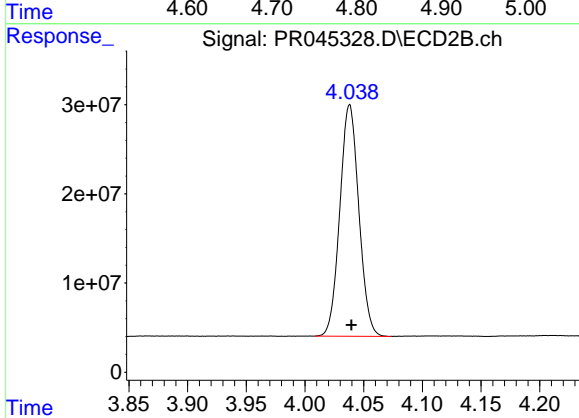




#1 Tetrachloro-m-xylene

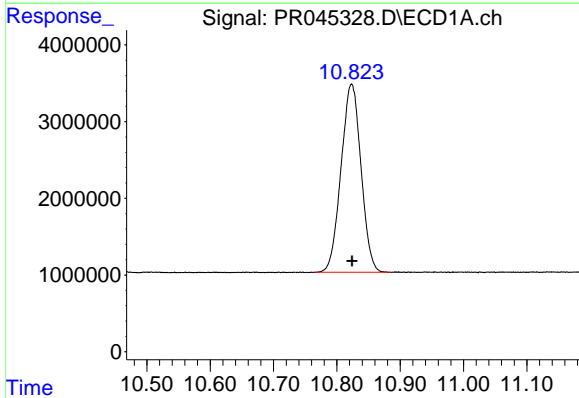
R.T.: 4.797 min
Delta R.T.: 0.000 min
Response: 38372568
Conc: 19.37 ng/ml

Instrument :
ECD_R
ClientSampleId :
LOD-MDL-SOIL-01-QT2-2020



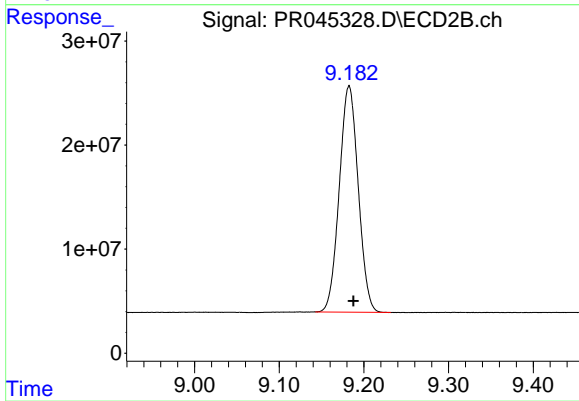
#1 Tetrachloro-m-xylene

R.T.: 4.038 min
Delta R.T.: -0.002 min
Response: 292849264
Conc: 21.24 ng/ml



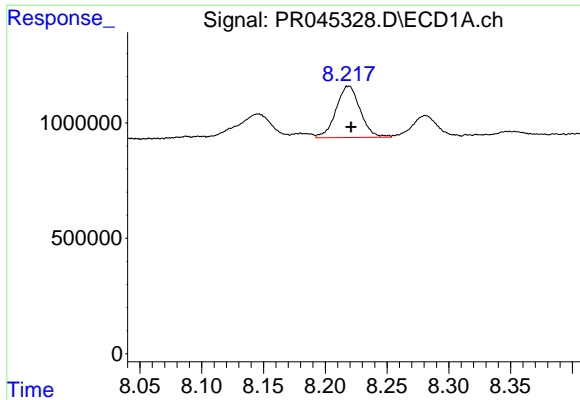
#2 Decachlorobiphenyl

R.T.: 10.823 min
Delta R.T.: 0.000 min
Response: 53716671
Conc: 26.76 ng/ml



#2 Decachlorobiphenyl

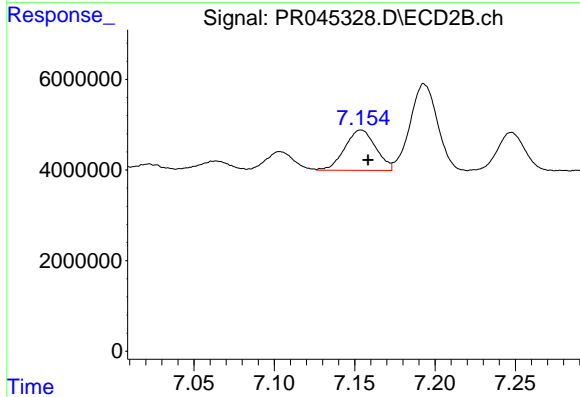
R.T.: 9.182 min
Delta R.T.: -0.005 min
Response: 338230995
Conc: 28.68 ng/ml



#36 AR-1262-1

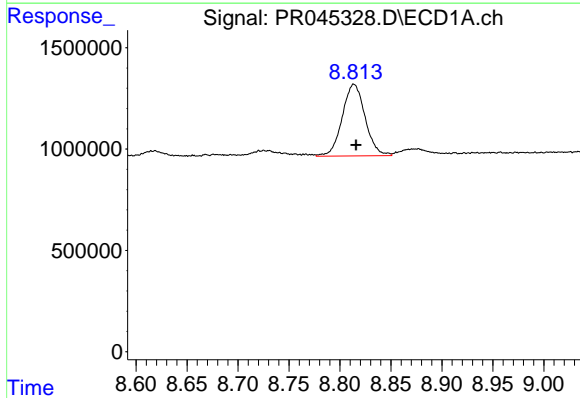
R.T.: 8.219 min
 Delta R.T.: -0.002 min
 Response: 3027420
 Conc: 25.60 ng/ml

Instrument :
 ECD_R
 ClientSampleId :
 LOD-MDL-SOIL-01-QT2-2020



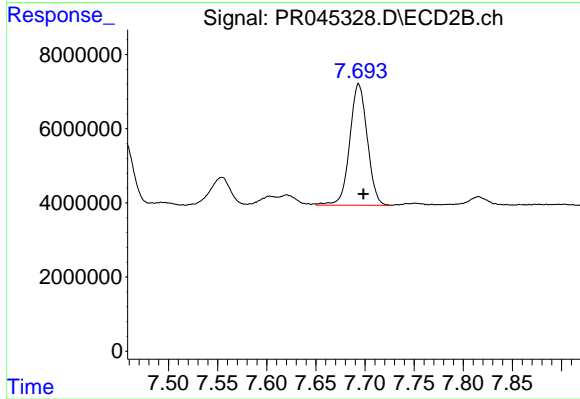
#36 AR-1262-1

R.T.: 7.154 min
 Delta R.T.: -0.004 min
 Response: 11952507
 Conc: 26.98 ng/ml



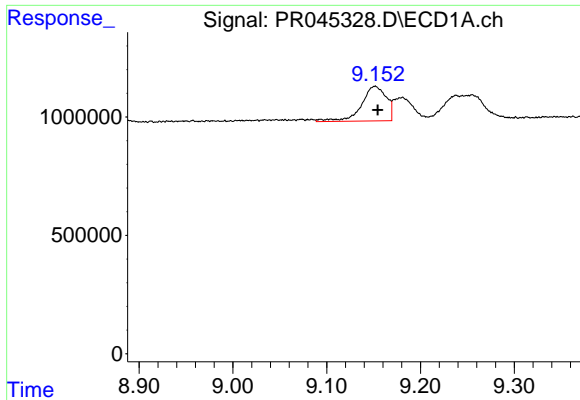
#37 AR-1262-2

R.T.: 8.814 min
 Delta R.T.: -0.002 min
 Response: 5531449
 Conc: 24.37 ng/ml



#37 AR-1262-2

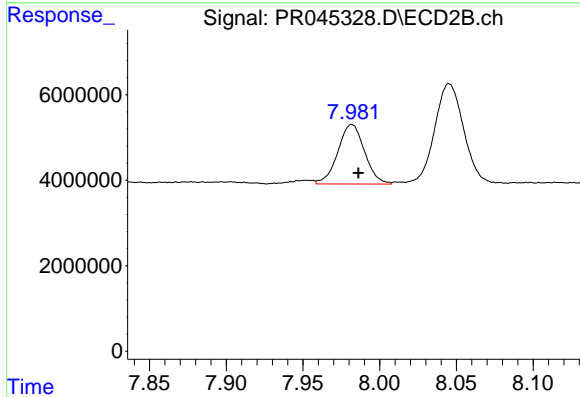
R.T.: 7.694 min
 Delta R.T.: -0.005 min
 Response: 40727767
 Conc: 26.05 ng/ml



#38 AR-1262-3

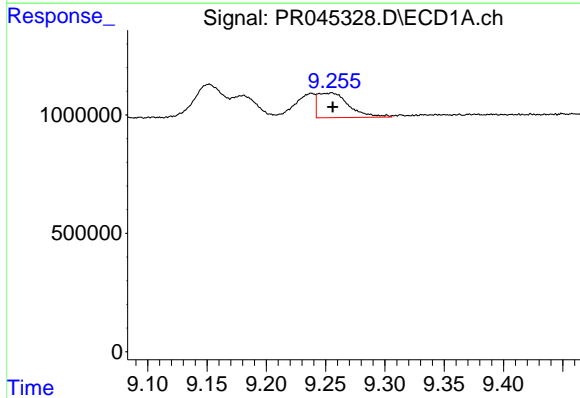
R.T.: 9.152 min
 Delta R.T.: -0.003 min
 Response: 2711663
 Conc: 28.03 ng/ml

Instrument :
 ECD_R
 ClientSampleId :
 LOD-MDL-SOIL-01-QT2-2020



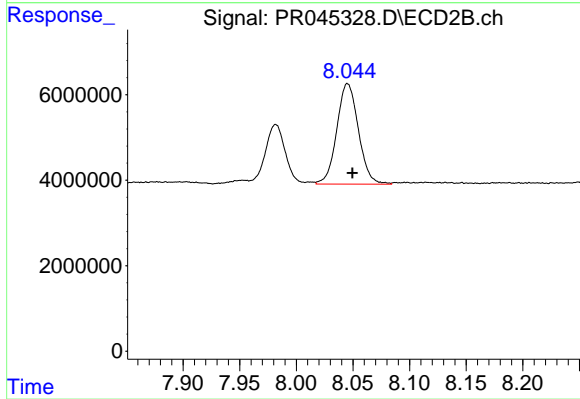
#38 AR-1262-3

R.T.: 7.982 min
 Delta R.T.: -0.004 min
 Response: 16914367
 Conc: 29.05 ng/ml



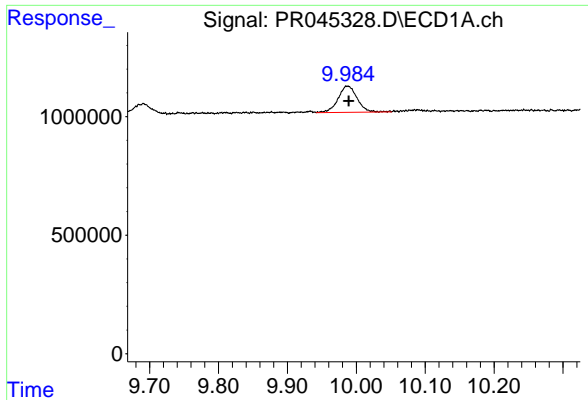
#39 AR-1262-4

R.T.: 9.255 min
 Delta R.T.: 0.000 min
 Response: 1905587
 Conc: 16.98 ng/ml



#39 AR-1262-4

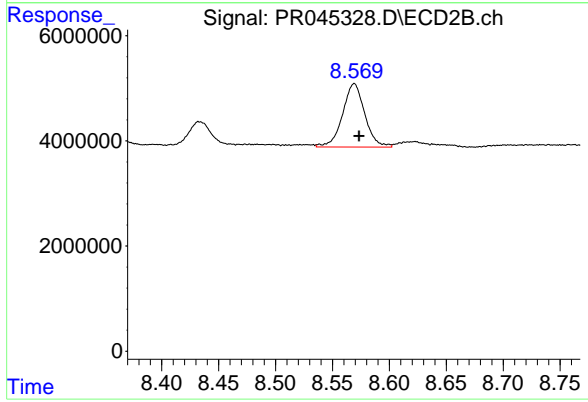
R.T.: 8.045 min
 Delta R.T.: -0.004 min
 Response: 31280927
 Conc: 27.98 ng/ml



#40 AR-1262-5

R.T.: 9.987 min
 Delta R.T.: -0.002 min
 Response: 2128186
 Conc: 25.78 ng/ml

Instrument :
 ECD_R
ClientSampleId :
 LOD-MDL-SOIL-01-QT2-2020



#40 AR-1262-5

R.T.: 8.569 min
 Delta R.T.: -0.004 min
 Response: 16343183
 Conc: 31.39 ng/ml