

Data Path : Z:\pestpcbsrv\HPCHEM1\ECD_R\Data\PR051620\
 Data File : PR045336.D
 Signal(s) : Signal #1: ECD1A.ch Signal #2: ECD2B.ch
 Acq On : 16 May 2020 02:11
 Operator : AJ\MA
 Sample : L2182-07
 Misc : AR1248 40PPB LOD
 ALS Vial : 34 Sample Multiplier: 1

Instrument :
 ECD_R
ClientSampleId :
 LOD-MDL-WATER-01-QT2-2020

Integration File signal 1: autoint1.e
 Integration File signal 2: autoint2.e
 Quant Time: May 16 07:29:17 2020
 Quant Method : Z:\pestpcbsrv\HPCHEM1\ECD_R\Method\PR051520.M
 Quant Title : GC EXTRACTABLES
 QLast Update : Thu May 14 17:15:31 2020
 Response via : Initial Calibration
 Integrator: ChemStation

Volume Inj. : 2 µl
 Signal #1 Phase : ZB-MR1 Signal #2 Phase: ZB-MR2
 Signal #1 Info : 30Mx0.32mmx 0.50µ Signal #2 Info : 30M x 0.32mm x 0.25µm

Compound	RT#1	RT#2	Resp#1	Resp#2	ng/ml	ng/ml

System Monitoring Compounds						
1) SA Tetrachlo...	4.797	4.038	28436812	217.4E6	14.358	15.764
2) SA Decachlor...	10.819	9.180	41585339	264.7E6	20.719	22.438
Target Compounds						
21) L5 AR-1248-1	5.986	5.139	2309718	18264852	34.301	38.101
22) L5 AR-1248-2	6.258	5.378	3235001	22135606	35.132	37.168
23) L5 AR-1248-3	6.468	5.422	3574987	22495032	34.150	36.842
24) L5 AR-1248-4	6.874	5.596	4117281	26666109	33.691	35.155
25) L5 AR-1248-5	6.914	5.992	3959854	28365314	33.929	37.003

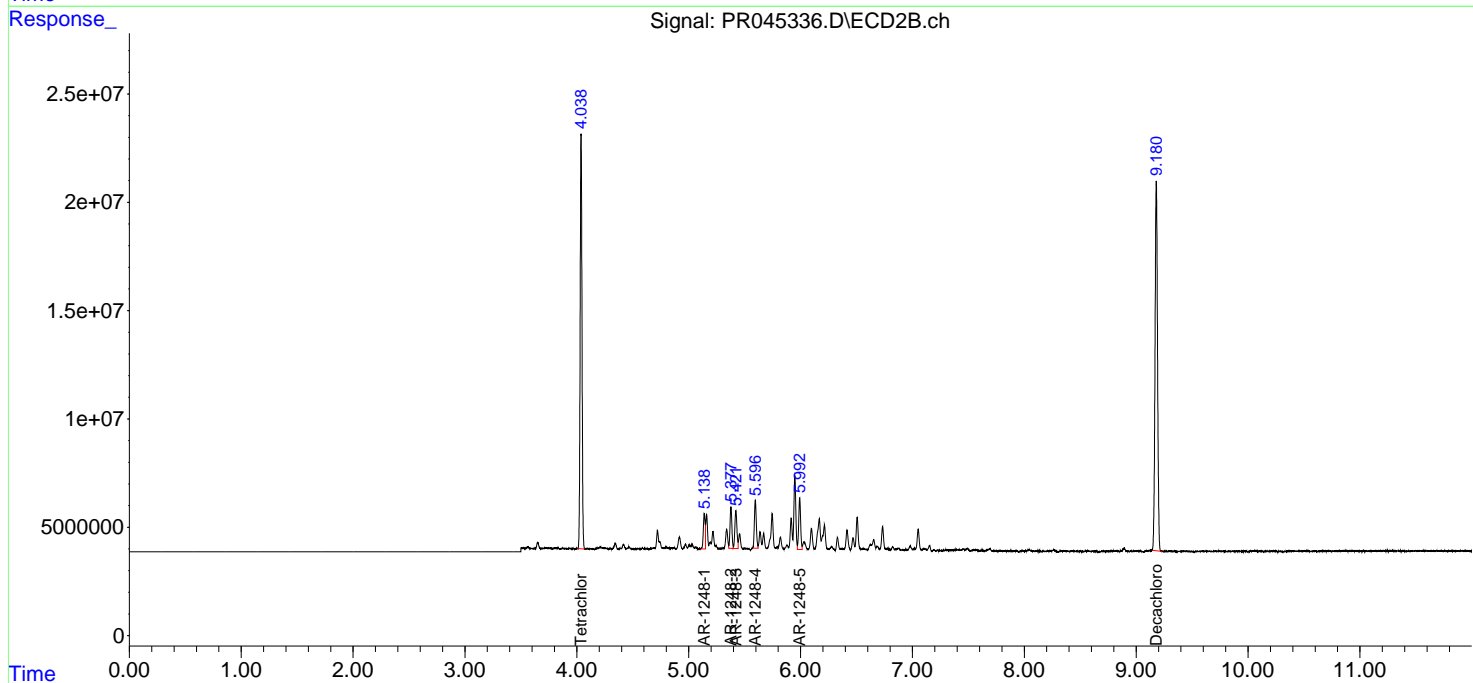
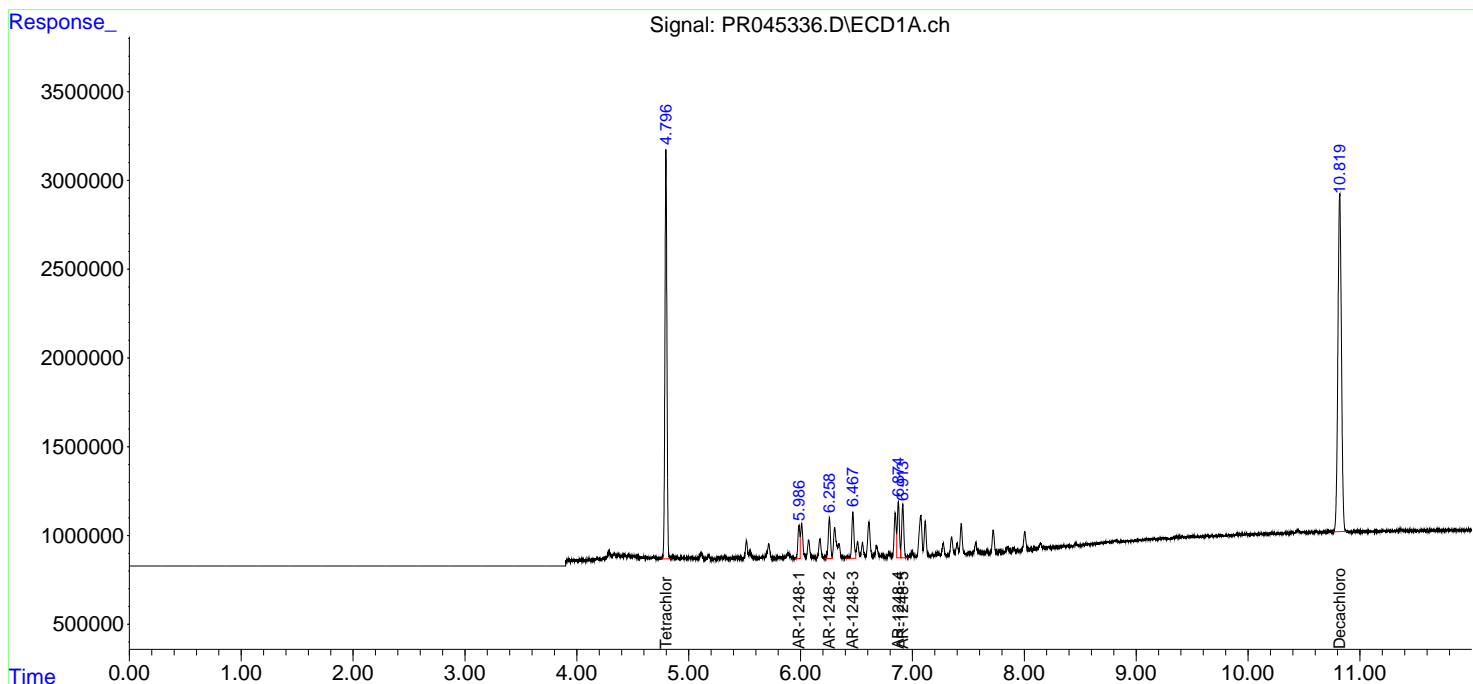
(f)=RT Delta > 1/2 Window (#)=Amounts differ by > 25% (m)=manual int.

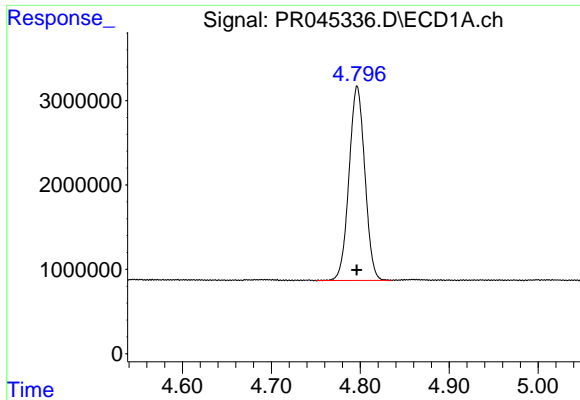
Data Path : Z:\pestpcbsrv\HPCHEM1\ECD_R\Data\PR051620\
 Data File : PR045336.D
 Signal(s) : Signal #1: ECD1A.ch Signal #2: ECD2B.ch
 Acq On : 16 May 2020 02:11
 Operator : AJ\MA
 Sample : L2182-07
 Misc : AR1248 40PPB LOD
 ALS Vial : 34 Sample Multiplier: 1

Instrument :
 ECD_R
Client Sampled :
 LOD-MDL-WATER-01-QT2-2020

Integration File signal 1: autoint1.e
 Integration File signal 2: autoint2.e
 Quant Time: May 16 07:29:17 2020
 Quant Method : Z:\pestpcbsrv\HPCHEM1\ECD_R\Method\PR051520.M
 Quant Title : GC EXTRACTABLES
 QLast Update : Thu May 14 17:15:31 2020
 Response via : Initial Calibration
 Integrator: ChemStation

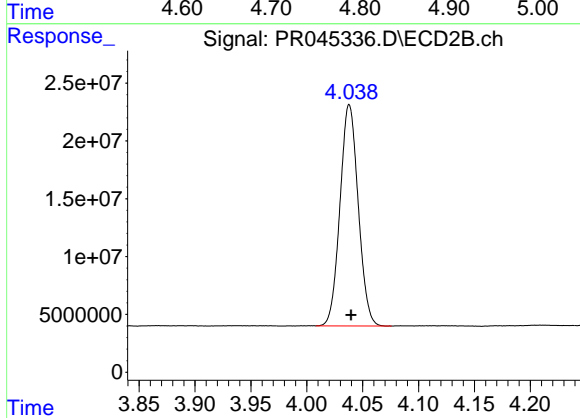
Volume Inj. : 2 µl
 Signal #1 Phase : ZB-MR1 Signal #2 Phase: ZB-MR2
 Signal #1 Info : 30Mx0.32mmx 0.50µm Signal #2 Info : 30M x 0.32mm x 0.25µm



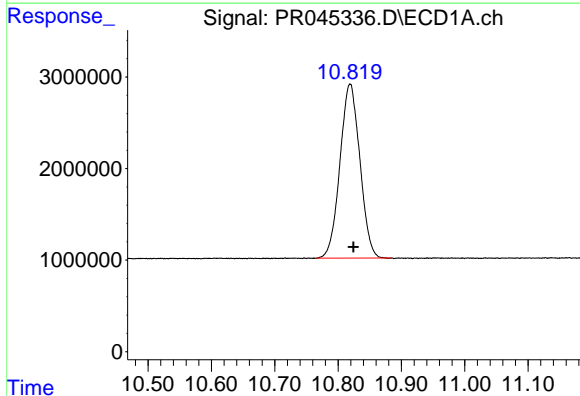


#1 Tetrachloro-m-xylene
 R.T.: 4.797 min
 Delta R.T.: 0.000 min
 Response: 28436812
 Conc: 14.36 ng/ml

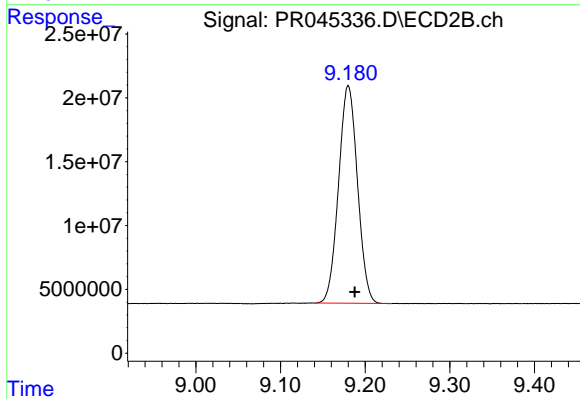
Instrument :
 ECD_R
 ClientSampleId :
 LOD-MDL-WATER-01-QT2-2020



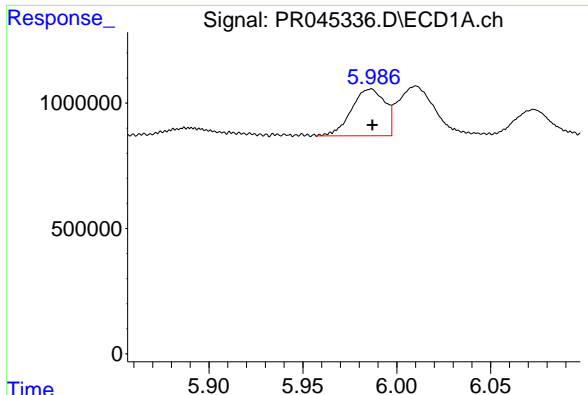
#1 Tetrachloro-m-xylene
 R.T.: 4.038 min
 Delta R.T.: -0.002 min
 Response: 217360873
 Conc: 15.76 ng/ml



#2 Decachlorobiphenyl
 R.T.: 10.819 min
 Delta R.T.: -0.005 min
 Response: 41585339
 Conc: 20.72 ng/ml



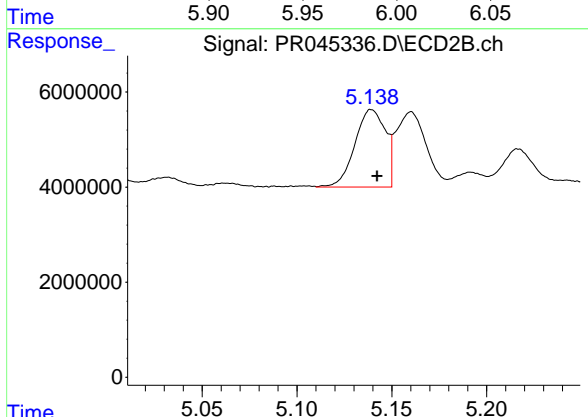
#2 Decachlorobiphenyl
 R.T.: 9.180 min
 Delta R.T.: -0.008 min
 Response: 264659899
 Conc: 22.44 ng/ml



#21 AR-1248-1

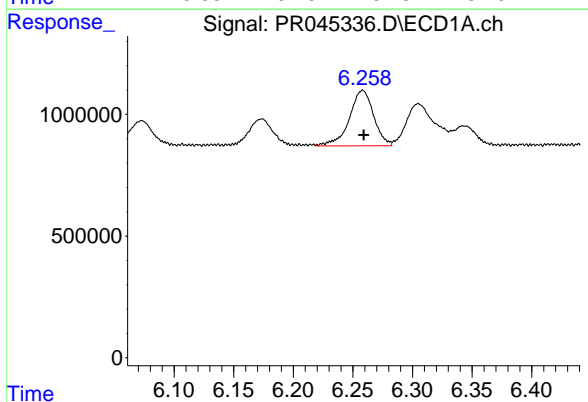
R.T.: 5.986 min
 Delta R.T.: -0.001 min
 Response: 2309718
 Conc: 34.30 ng/ml

Instrument :
 ECD_R
 ClientSampleId :
 LOD-MDL-WATER-01-QT2-2020



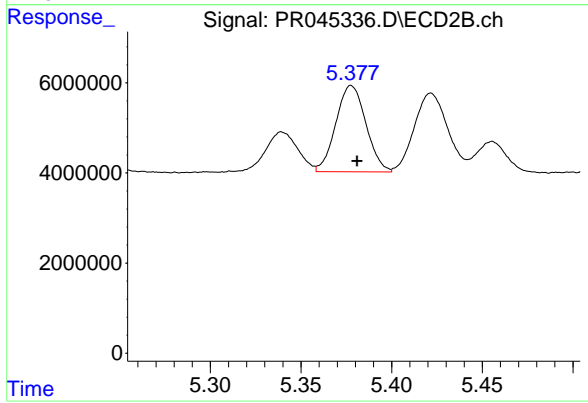
#21 AR-1248-1

R.T.: 5.139 min
 Delta R.T.: -0.003 min
 Response: 18264852
 Conc: 38.10 ng/ml



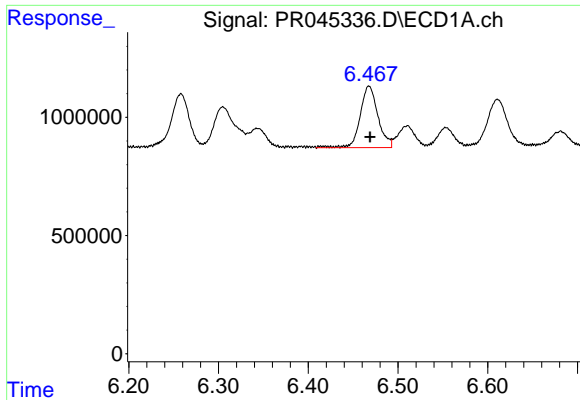
#22 AR-1248-2

R.T.: 6.258 min
 Delta R.T.: 0.000 min
 Response: 3235001
 Conc: 35.13 ng/ml



#22 AR-1248-2

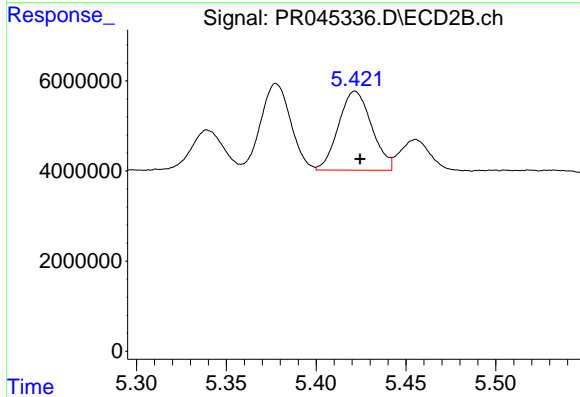
R.T.: 5.378 min
 Delta R.T.: -0.003 min
 Response: 22135606
 Conc: 37.17 ng/ml



#23 AR-1248-3

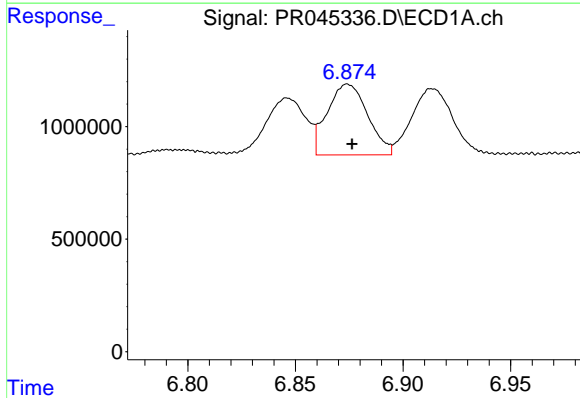
R.T.: 6.468 min
 Delta R.T.: -0.001 min
 Response: 3574987
 Conc: 34.15 ng/ml

Instrument :
 ECD_R
 ClientSampleId :
 LOD-MDL-WATER-01-QT2-2020



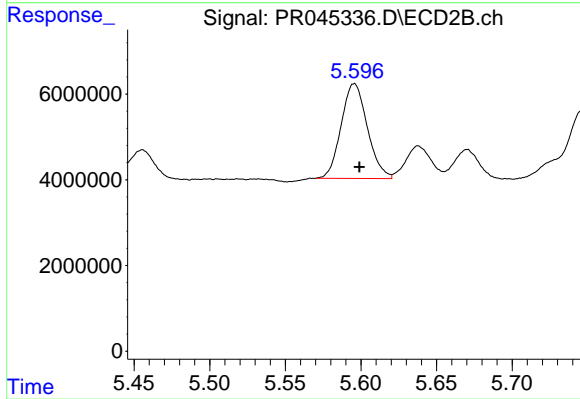
#23 AR-1248-3

R.T.: 5.422 min
 Delta R.T.: -0.003 min
 Response: 22495032
 Conc: 36.84 ng/ml



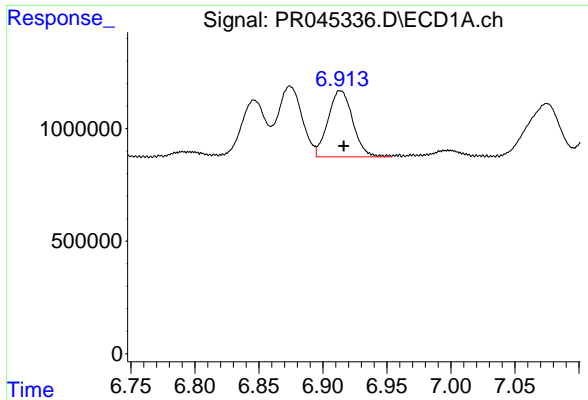
#24 AR-1248-4

R.T.: 6.874 min
 Delta R.T.: -0.002 min
 Response: 4117281
 Conc: 33.69 ng/ml



#24 AR-1248-4

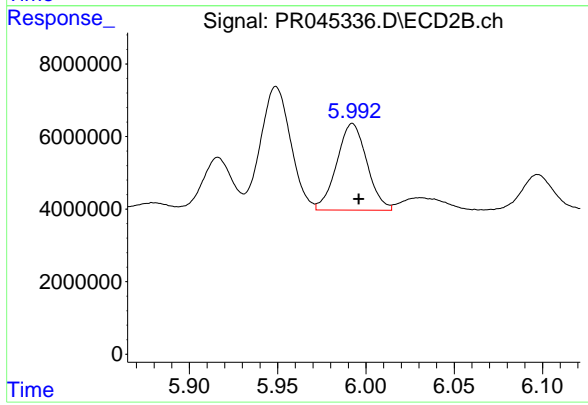
R.T.: 5.596 min
 Delta R.T.: -0.003 min
 Response: 26666109
 Conc: 35.16 ng/ml



#25 AR-1248-5

R.T.: 6.914 min
Delta R.T.: -0.003 min
Response: 3959854
Conc: 33.93 ng/ml

Instrument :
ECD_R
ClientSampleId :
LOD-MDL-WATER-01-QT2-2020



#25 AR-1248-5

R.T.: 5.992 min
Delta R.T.: -0.004 min
Response: 28365314
Conc: 37.00 ng/ml