

Data Path : Z:\pestpcbsrv\HPCHEM1\ECD\_R\Data\PR051620\  
 Data File : PR045338.D  
 Signal(s) : Signal #1: ECD1A.ch Signal #2: ECD2B.ch  
 Acq On : 16 May 2020 02:40  
 Operator : AJ\MA  
 Sample : L2182-07  
 Misc : AR1262 25PPB LOD  
 ALS Vial : 36 Sample Multiplier: 1

**Instrument :**  
 ECD\_R  
**ClientSampleId :**  
 LOD-MDL-WATER-01-QT2-2020

Integration File signal 1: autoint1.e  
 Integration File signal 2: autoint2.e  
 Quant Time: May 16 07:30:08 2020  
 Quant Method : Z:\pestpcbsrv\HPCHEM1\ECD\_R\Method\PR051520.M  
 Quant Title : GC EXTRACTABLES  
 QLast Update : Thu May 14 17:15:31 2020  
 Response via : Initial Calibration  
 Integrator: ChemStation

Volume Inj. : 2 µl  
 Signal #1 Phase : ZB-MR1 Signal #2 Phase: ZB-MR2  
 Signal #1 Info : 30Mx0.32mmx 0.50µ Signal #2 Info : 30M x 0.32mm x 0.25µm

Compound	RT#1	RT#2	Resp#1	Resp#2	ng/ml	ng/ml
-----						
System Monitoring Compounds						
1) SA Tetrachlo...	4.798	4.040	28383429	216.8E6	14.331	15.724
2) SA Decachlor...	10.819	9.181	49733890	315.7E6	24.779	26.765
Target Compounds						
36) L8 AR-1262-1	8.218	7.153	2482393	9461853	20.995	21.356
37) L8 AR-1262-2	8.813	7.693	4641684	35624970	20.447	22.785
38) L8 AR-1262-3	9.150	7.980	2527616	17986861	26.132	30.890
39) L8 AR-1262-4	9.251	8.044	2563310	30074789	22.842	26.898
40) L8 AR-1262-5	9.987	8.567	1949879	16495656	23.621	31.684 #
-----						

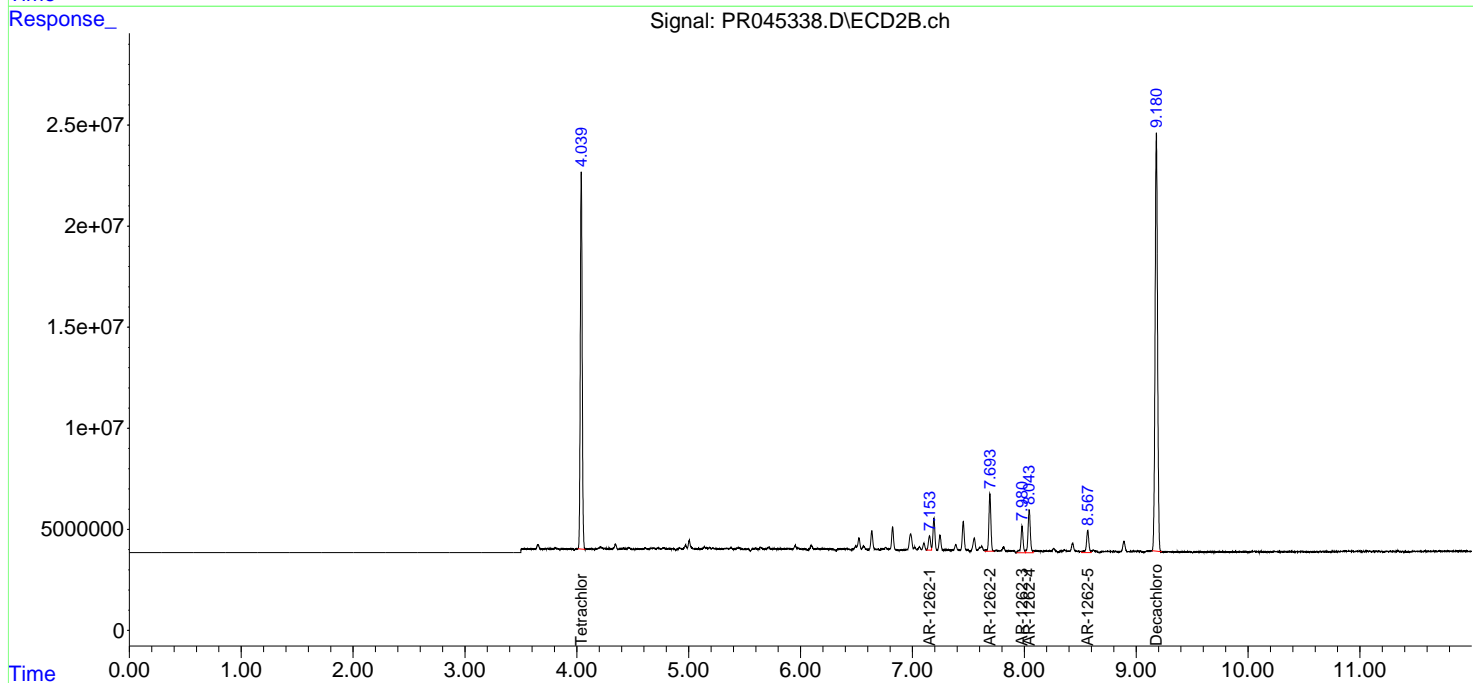
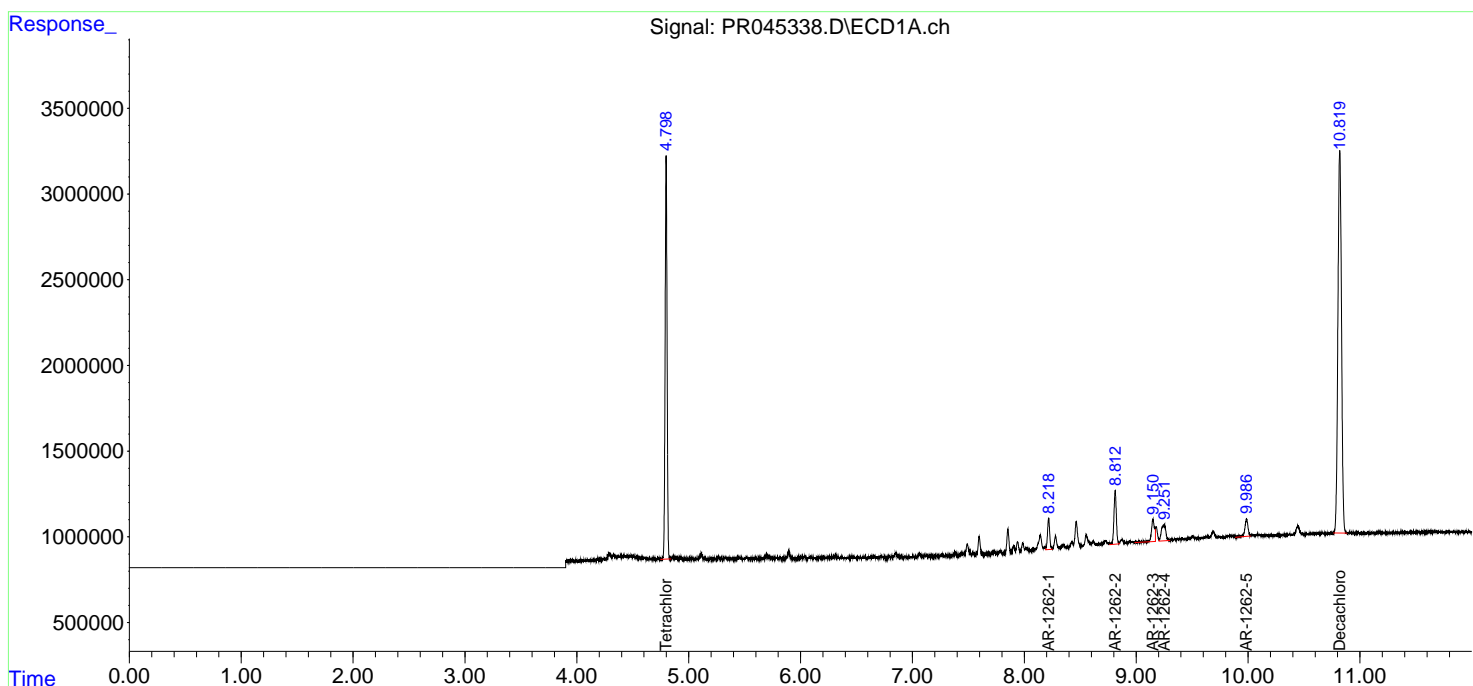
(f)=RT Delta > 1/2 Window (#)=Amounts differ by > 25% (m)=manual int.

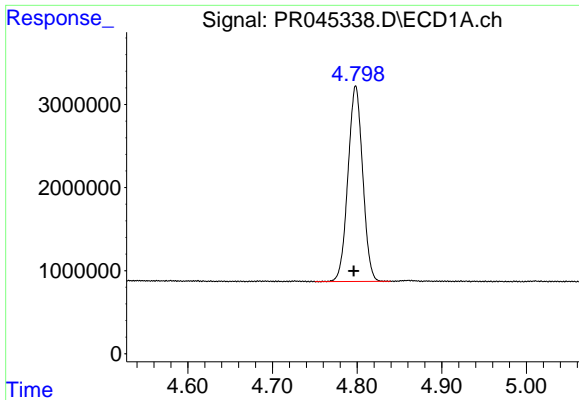
Data Path : Z:\pestpcbsrv\HPCHEM1\ECD\_R\Data\PR051620\  
 Data File : PR045338.D  
 Signal(s) : Signal #1: ECD1A.ch Signal #2: ECD2B.ch  
 Acq On : 16 May 2020 02:40  
 Operator : AJ\MA  
 Sample : L2182-07  
 Misc : AR1262 25PPB LOD  
 ALS Vial : 36 Sample Multiplier: 1

**Instrument :**  
 ECD\_R  
**Client Sampled :**  
 LOD-MDL-WATER-01-QT2-2020

Integration File signal 1: autoint1.e  
 Integration File signal 2: autoint2.e  
 Quant Time: May 16 07:30:08 2020  
 Quant Method : Z:\pestpcbsrv\HPCHEM1\ECD\_R\Method\PR051520.M  
 Quant Title : GC EXTRACTABLES  
 QLast Update : Thu May 14 17:15:31 2020  
 Response via : Initial Calibration  
 Integrator: ChemStation

Volume Inj. : 2 µl  
 Signal #1 Phase : ZB-MR1 Signal #2 Phase: ZB-MR2  
 Signal #1 Info : 30Mx0.32mmx 0.50µ Signal #2 Info : 30M x 0.32mm x 0.25µm

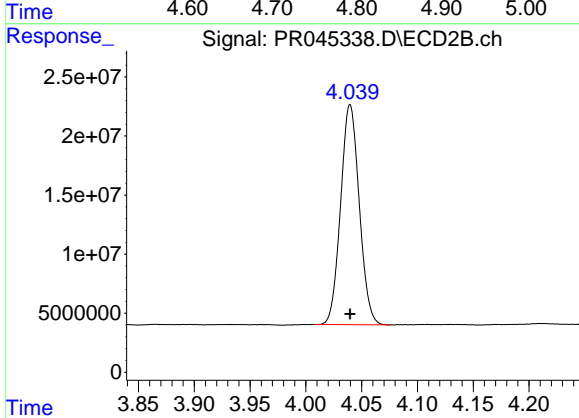




#1 Tetrachloro-m-xylene

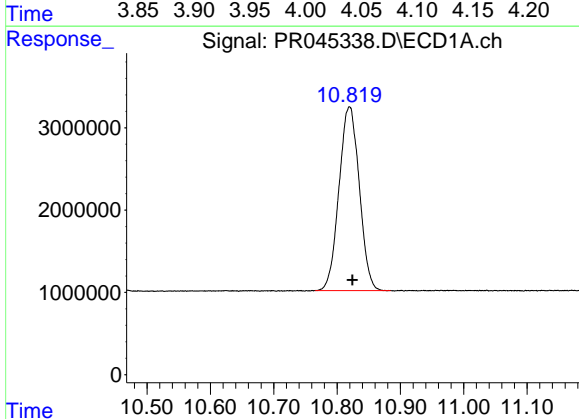
R.T.: 4.798 min  
 Delta R.T.: 0.002 min  
 Response: 28383429  
 Conc: 14.33 ng/ml

Instrument :  
 ECD\_R  
 ClientSampleId :  
 LOD-MDL-WATER-01-QT2-2020



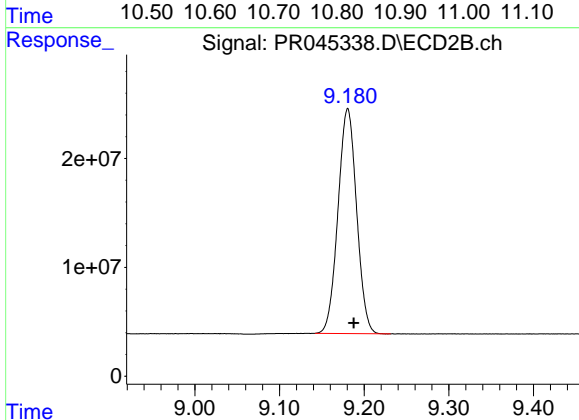
#1 Tetrachloro-m-xylene

R.T.: 4.040 min  
 Delta R.T.: 0.000 min  
 Response: 216808863  
 Conc: 15.72 ng/ml



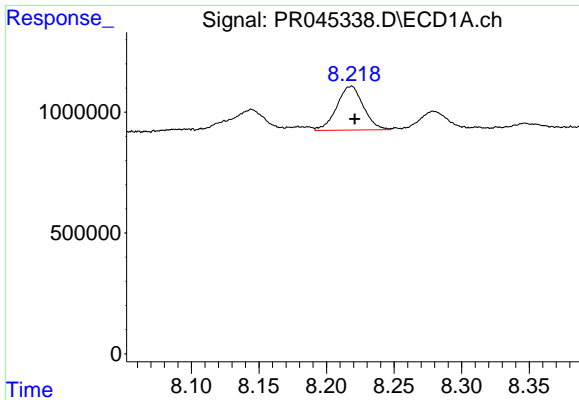
#2 Decachlorobiphenyl

R.T.: 10.819 min  
 Delta R.T.: -0.005 min  
 Response: 49733890  
 Conc: 24.78 ng/ml



#2 Decachlorobiphenyl

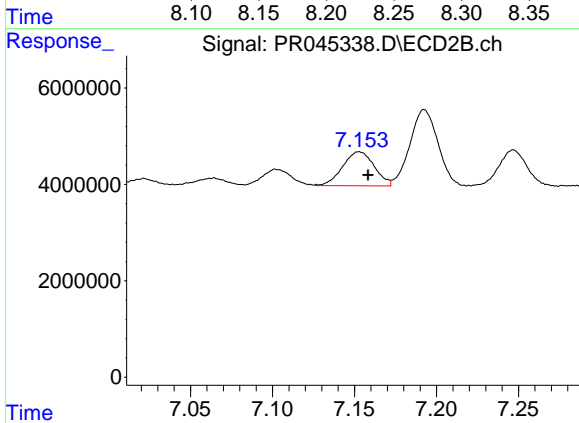
R.T.: 9.181 min  
 Delta R.T.: -0.007 min  
 Response: 315701376  
 Conc: 26.77 ng/ml



#36 AR-1262-1

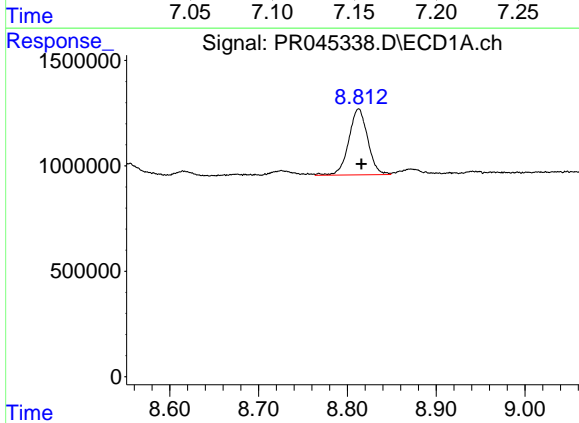
R.T.: 8.218 min  
 Delta R.T.: -0.003 min  
 Response: 2482393  
 Conc: 21.00 ng/ml

**Instrument :**  
 ECD\_R  
**ClientSampleId :**  
 LOD-MDL-WATER-01-QT2-2020



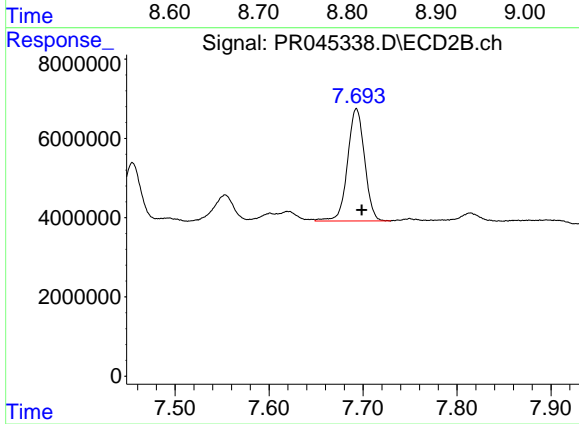
#36 AR-1262-1

R.T.: 7.153 min  
 Delta R.T.: -0.005 min  
 Response: 9461853  
 Conc: 21.36 ng/ml



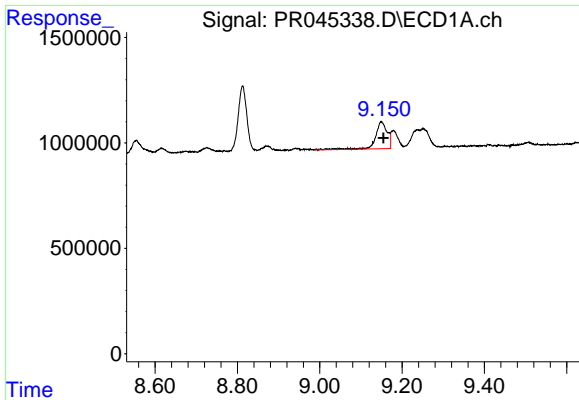
#37 AR-1262-2

R.T.: 8.813 min  
 Delta R.T.: -0.003 min  
 Response: 4641684  
 Conc: 20.45 ng/ml



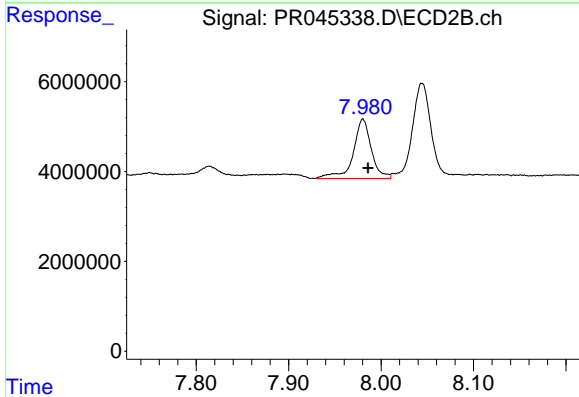
#37 AR-1262-2

R.T.: 7.693 min  
 Delta R.T.: -0.005 min  
 Response: 35624970  
 Conc: 22.79 ng/ml

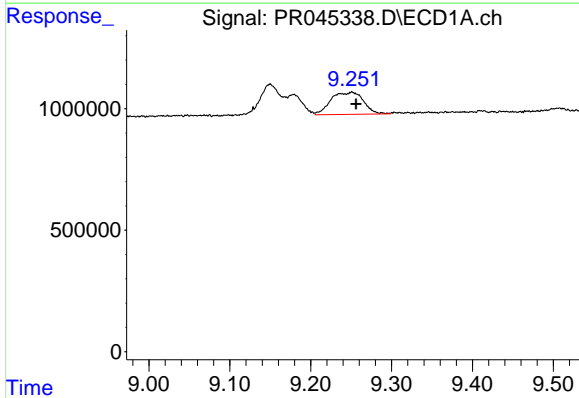


#38 AR-1262-3  
 R.T.: 9.150 min  
 Delta R.T.: -0.004 min  
 Response: 2527616  
 Conc: 26.13 ng/ml

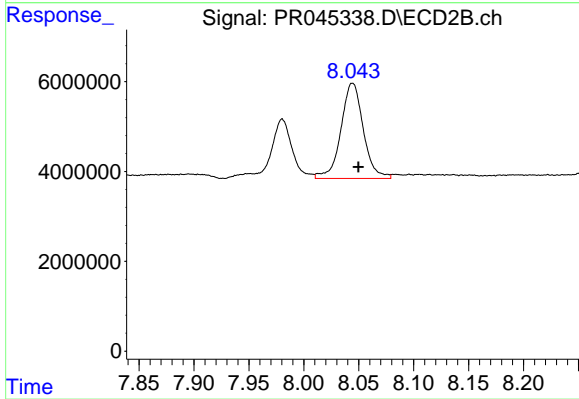
**Instrument :**  
 ECD\_R  
**ClientSampleId :**  
 LOD-MDL-WATER-01-QT2-2020



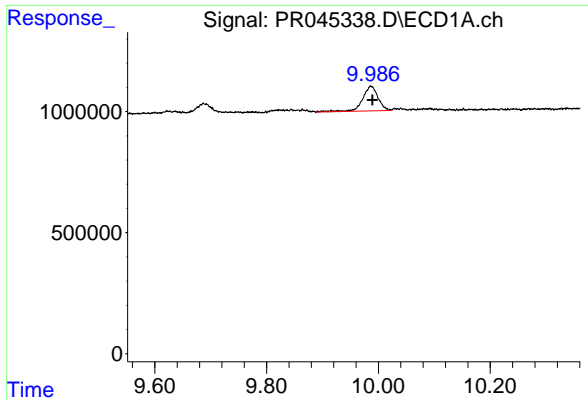
#38 AR-1262-3  
 R.T.: 7.980 min  
 Delta R.T.: -0.006 min  
 Response: 17986861  
 Conc: 30.89 ng/ml



#39 AR-1262-4  
 R.T.: 9.251 min  
 Delta R.T.: -0.005 min  
 Response: 2563310  
 Conc: 22.84 ng/ml



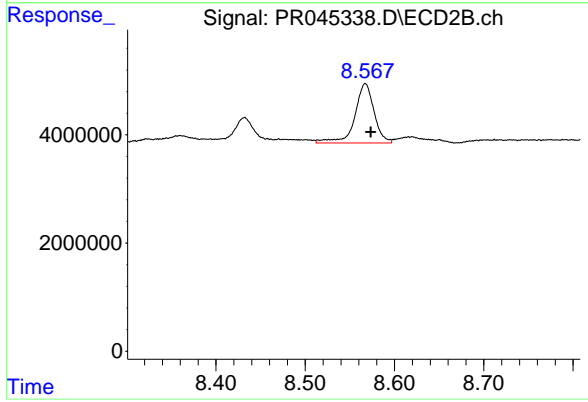
#39 AR-1262-4  
 R.T.: 8.044 min  
 Delta R.T.: -0.005 min  
 Response: 30074789  
 Conc: 26.90 ng/ml



#40 AR-1262-5

R.T.: 9.987 min  
Delta R.T.: -0.002 min  
Response: 1949879  
Conc: 23.62 ng/ml

Instrument :  
ECD\_R  
ClientSampleId :  
LOD-MDL-WATER-01-QT2-2020



#40 AR-1262-5

R.T.: 8.567 min  
Delta R.T.: -0.006 min  
Response: 16495656  
Conc: 31.68 ng/ml