

Data Path : Z:\pestpcbsrv\HPCHEM1\ECD_R\Data\PR052319\
 Data File : PR038213.D
 Signal(s) : Signal #1: ECD1A.ch Signal #2: ECD2B.ch
 Acq On : 23 May 2019 11:40
 Operator : SM\MA
 Sample : AR1232ICC500
 Misc :
 ALS Vial : 87 Sample Multiplier: 1

Instrument :
 ECD_R
 ClientSampleId :

Integration File signal 1: autoint1.e
 Integration File signal 2: autoint2.e
 Quant Time: May 23 12:09:49 2019
 Quant Method : Z:\pestpcbsrv\HPCHEM1\ECD_R\Method\PR052319.M
 Quant Title : GC EXTRACTABLES
 QLast Update : Thu May 23 12:09:22 2019
 Response via : Initial Calibration
 Integrator: ChemStation

Volume Inj. : 2 µl
 Signal #1 Phase : ZB-MR2 Signal #2 Phase: ZB-MR2
 Signal #1 Info : 30Mx0.32mmx 0.50µ Signal #2 Info : 30M x 0.32mm x 0.25µm

Compound	RT#1	RT#2	Resp#1	Resp#2	ng/ml	ng/ml
System Monitoring Compounds						
1) SA Tetrachlo...	3.778	4.626	104.8E6	329.1E6	60.099	62.164
2) SA Decachlor...	8.759	10.382	102.7E6	244.6E6	51.029	53.051
Target Compounds						
3) L1 AR-1016-1	4.851	5.782	18057084	48125283	246.434	255.439
4) L1 AR-1016-2	4.869	5.804	23627328	68678391	237.878	252.869
5) L1 AR-1016-3	5.043	5.866	11560039	41974606	218.056	255.618
6) L1 AR-1016-4	5.084	5.964	6980534	32451719	165.740	244.120 #
7) L1 AR-1016-5	5.297	6.254	16535985	28717902	294.596	212.464 #
8) L2 AR-1221-1	3.990	4.829	7601486	21211889	309.539	304.062
9) L2 AR-1221-2	4.075	4.917	6603474	19499127	350.996	375.850
10) L2 AR-1221-3	4.150	4.993	22632646	65238244	379.863	388.690
11) L3 AR-1232-1	4.150	4.993	22632646	65238244	500.000	500.000
12) L3 AR-1232-2	4.869	5.518	23627328	32800360	500.000	500.000
13) L3 AR-1232-3	5.043	5.804	11560039	68678391	500.000	500.000
14) L3 AR-1232-4	5.126	5.964	8251980	32451719	500.000	500.000
15) L3 AR-1232-5	5.297	6.050	16535985	23396338	500.000	500.000
16) L4 AR-1242-1	4.851	5.782	18057084	48125283	265.887	274.425
17) L4 AR-1242-2	4.869	5.804	23627328	68678391	253.869	272.174
18) L4 AR-1242-3	5.043	5.866	11560039	41974606	234.769	276.220
19) L4 AR-1242-4	5.126	5.964	8251980	32451719	176.947	257.303 #
20) L4 AR-1242-5	5.642	6.691	12397465	34975388	197.332	254.530 #
31) L7 AR-1260-1	0.000	7.377	0	9109810	N.D.	38.195 #
32) L7 AR-1260-2	6.489	0.000	9344840	0	63.919	N.D. #
35) L7 AR-1260-5	0.000	8.469	0	8665181	N.D.	16.898 #

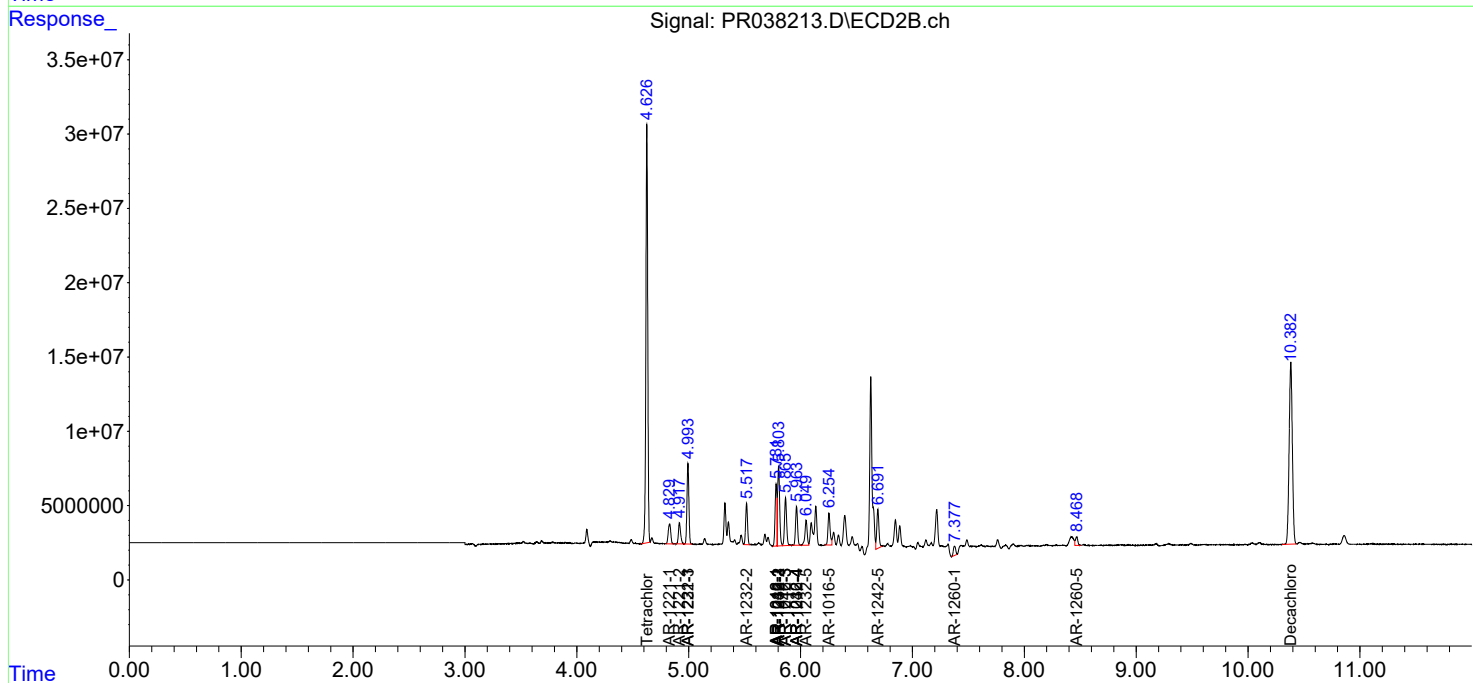
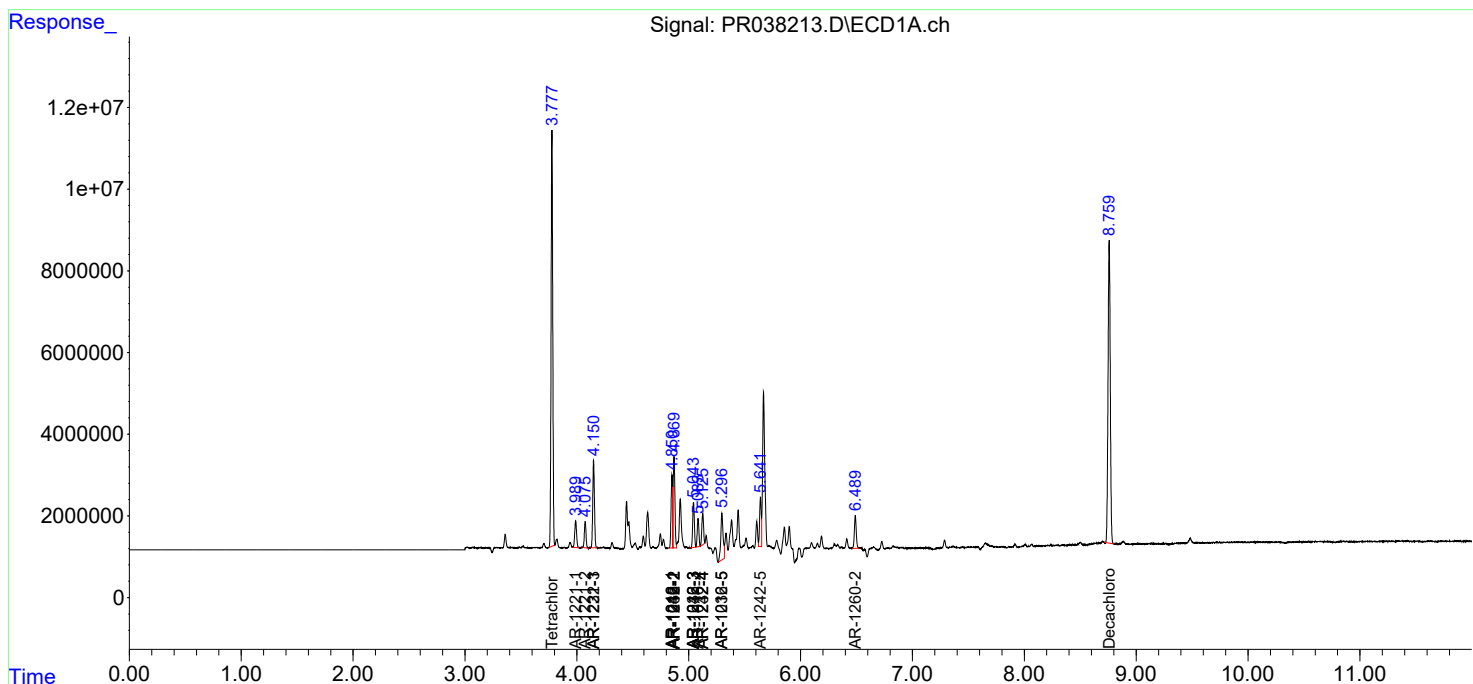
(f)=RT Delta > 1/2 Window (#)=Amounts differ by > 25% (m)=manual int.

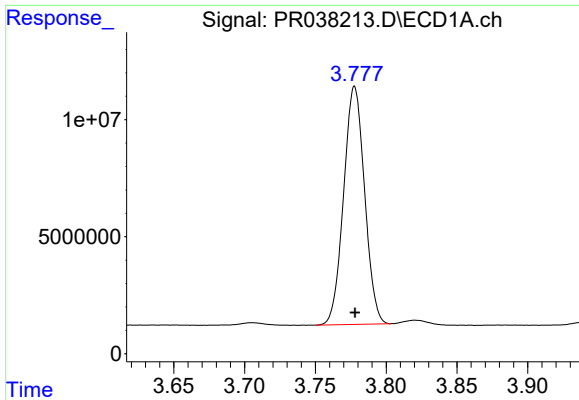
Data Path : Z:\pestpcbsrv\HPCHEM1\ECD_R\Data\PR052319\
 Data File : PR038213.D
 Signal(s) : Signal #1: ECD1A.ch Signal #2: ECD2B.ch
 Acq On : 23 May 2019 11:40
 Operator : SM\MA
 Sample : AR1232ICC500
 Misc :
 ALS Vial : 87 Sample Multiplier: 1

Instrument :
 ECD_R
 ClientSampled :

Integration File signal 1: autoint1.e
 Integration File signal 2: autoint2.e
 Quant Time: May 23 12:09:49 2019
 Quant Method : Z:\pestpcbsrv\HPCHEM1\ECD_R\Method\PR052319.M
 Quant Title : GC EXTRACTABLES
 QLast Update : Thu May 23 12:09:22 2019
 Response via : Initial Calibration
 Integrator: ChemStation

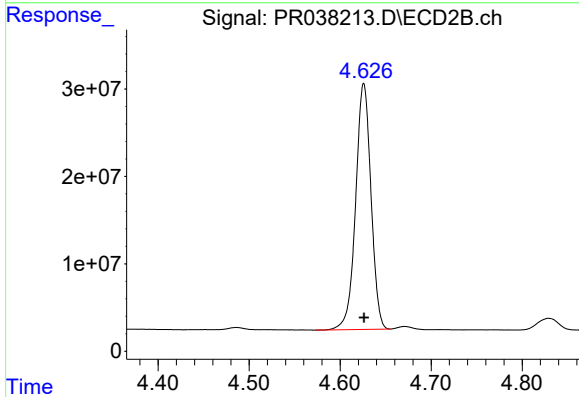
Volume Inj. : 2 µl
 Signal #1 Phase : ZB-MR1 Signal #2 Phase: ZB-MR2
 Signal #1 Info : 30Mx0.32mmx 0.50µ Signal #2 Info : 30M x 0.32mm x 0.25µm



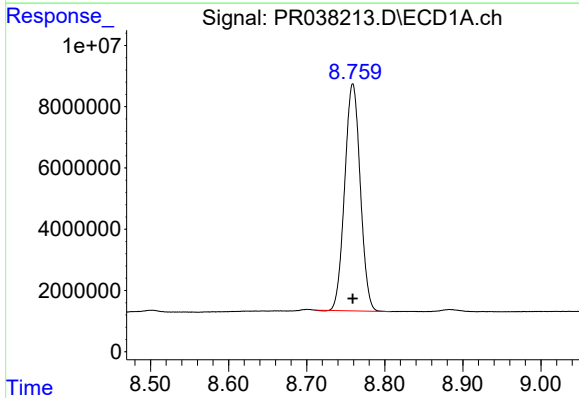


#1 Tetrachloro-m-xylene
 R.T.: 3.778 min
 Delta R.T.: 0.000 min
 Response: 104789965
 Conc: 60.10 ng/ml

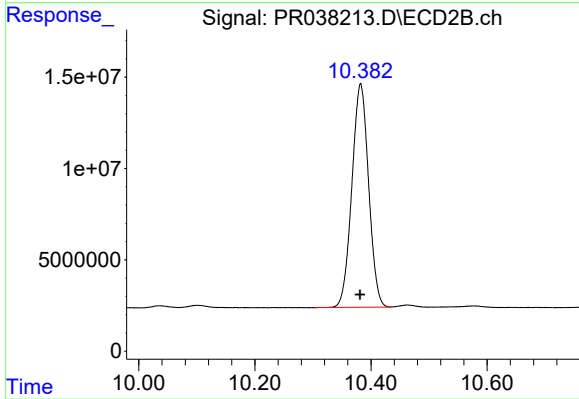
Instrument :
 ECD_R
 ClientSampleId :



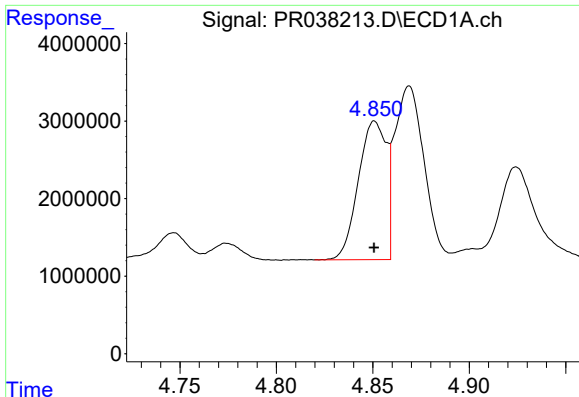
#1 Tetrachloro-m-xylene
 R.T.: 4.626 min
 Delta R.T.: 0.000 min
 Response: 329108825
 Conc: 62.16 ng/ml



#2 Decachlorobiphenyl
 R.T.: 8.759 min
 Delta R.T.: 0.000 min
 Response: 102737047
 Conc: 51.03 ng/ml



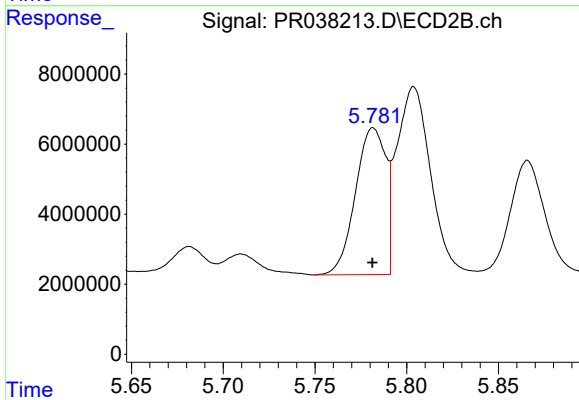
#2 Decachlorobiphenyl
 R.T.: 10.382 min
 Delta R.T.: 0.000 min
 Response: 244590531
 Conc: 53.05 ng/ml



#3 AR-1016-1

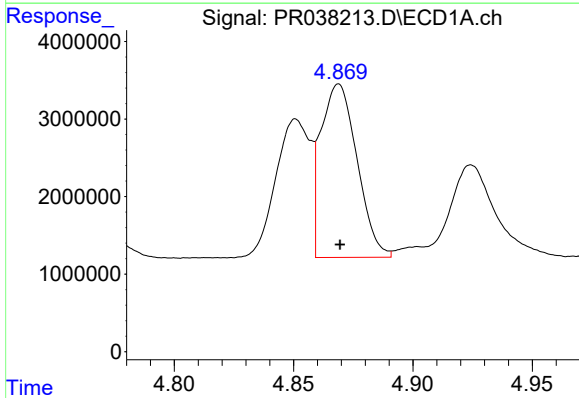
R.T.: 4.851 min
 Delta R.T.: 0.000 min
 Response: 18057084
 Conc: 246.43 ng/ml

Instrument :
 ECD_R
 ClientSampled :



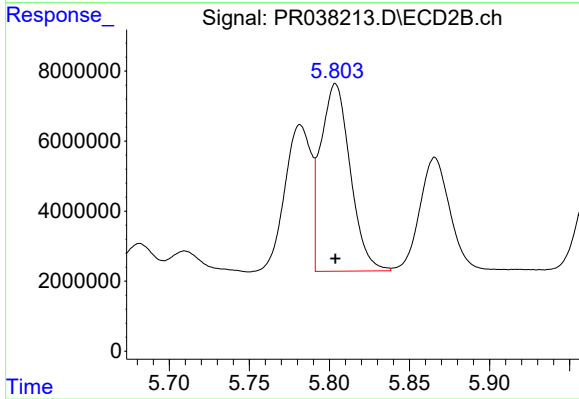
#3 AR-1016-1

R.T.: 5.782 min
 Delta R.T.: 0.000 min
 Response: 48125283
 Conc: 255.44 ng/ml



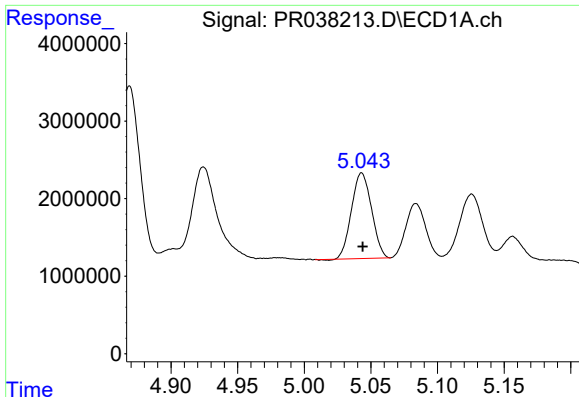
#4 AR-1016-2

R.T.: 4.869 min
 Delta R.T.: 0.000 min
 Response: 23627328
 Conc: 237.88 ng/ml



#4 AR-1016-2

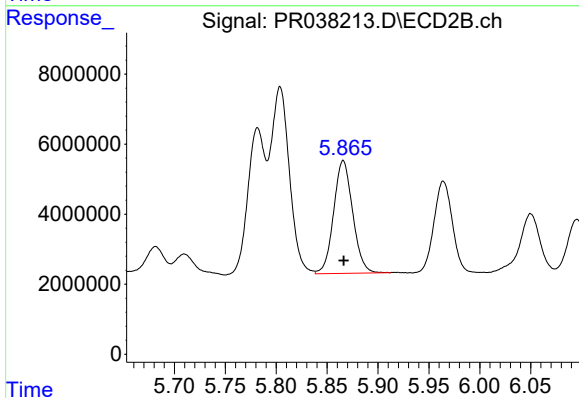
R.T.: 5.804 min
 Delta R.T.: 0.000 min
 Response: 68678391
 Conc: 252.87 ng/ml



#5 AR-1016-3

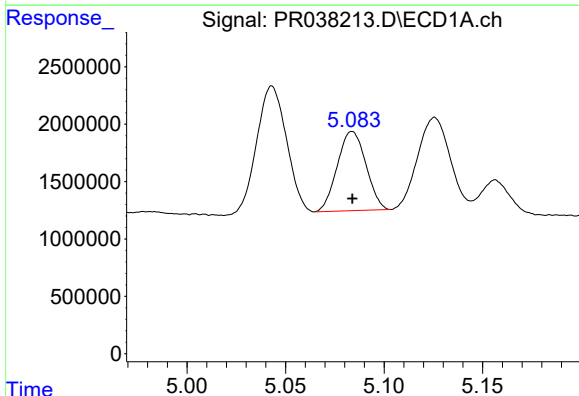
R.T.: 5.043 min
 Delta R.T.: 0.000 min
 Response: 11560039
 Conc: 218.06 ng/ml

Instrument :
 ECD_R
 ClientSampled :



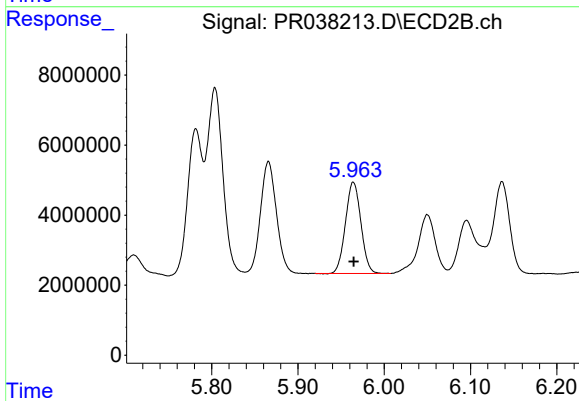
#5 AR-1016-3

R.T.: 5.866 min
 Delta R.T.: 0.000 min
 Response: 41974606
 Conc: 255.62 ng/ml



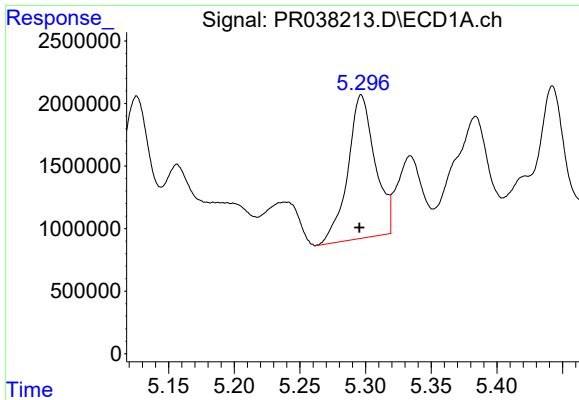
#6 AR-1016-4

R.T.: 5.084 min
 Delta R.T.: 0.000 min
 Response: 6980534
 Conc: 165.74 ng/ml



#6 AR-1016-4

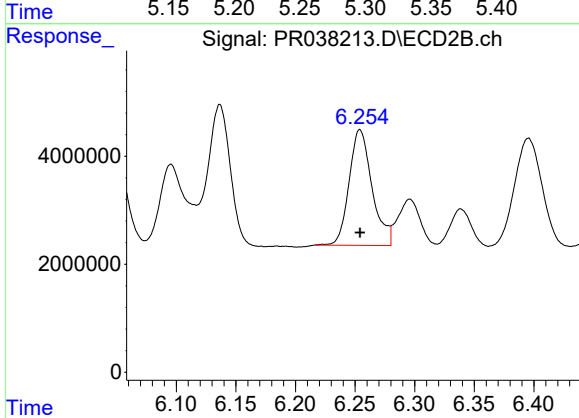
R.T.: 5.964 min
 Delta R.T.: 0.000 min
 Response: 32451719
 Conc: 244.12 ng/ml



#7 AR-1016-5

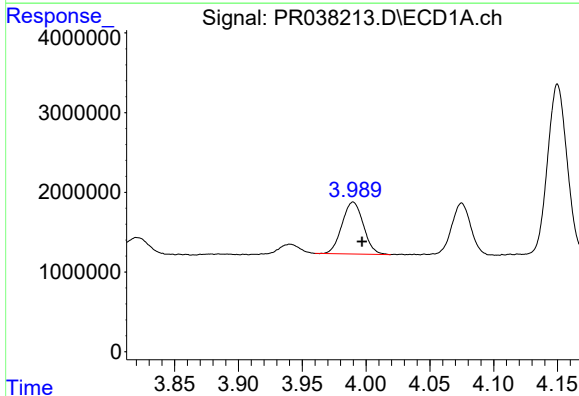
R.T.: 5.297 min
 Delta R.T.: 0.001 min
 Response: 16535985
 Conc: 294.60 ng/ml

Instrument :
 ECD_R
 ClientSampleId :



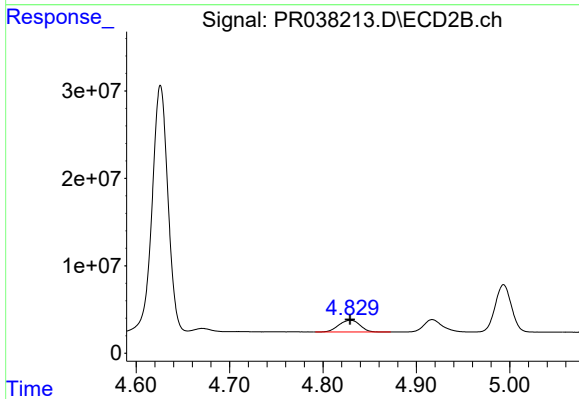
#7 AR-1016-5

R.T.: 6.254 min
 Delta R.T.: 0.000 min
 Response: 28717902
 Conc: 212.46 ng/ml



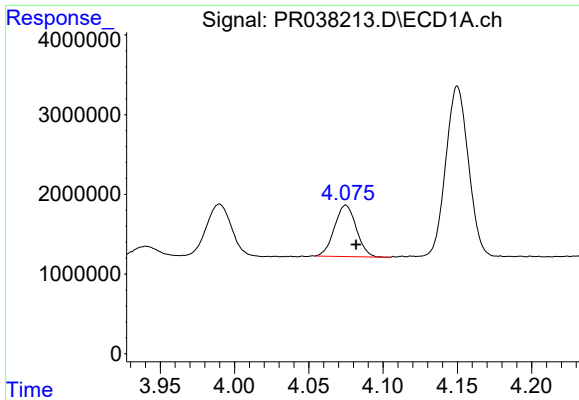
#8 AR-1221-1

R.T.: 3.990 min
 Delta R.T.: -0.007 min
 Response: 7601486
 Conc: 309.54 ng/ml



#8 AR-1221-1

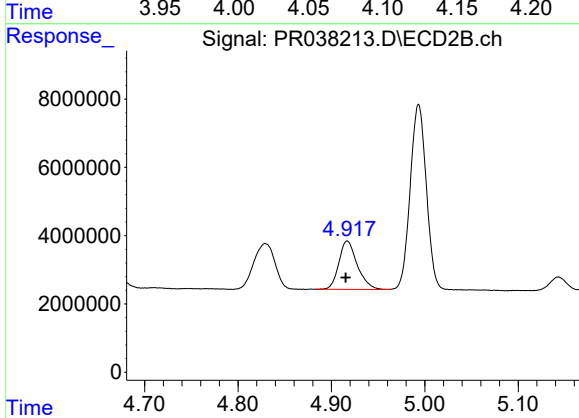
R.T.: 4.829 min
 Delta R.T.: 0.000 min
 Response: 21211889
 Conc: 304.06 ng/ml



#9 AR-1221-2

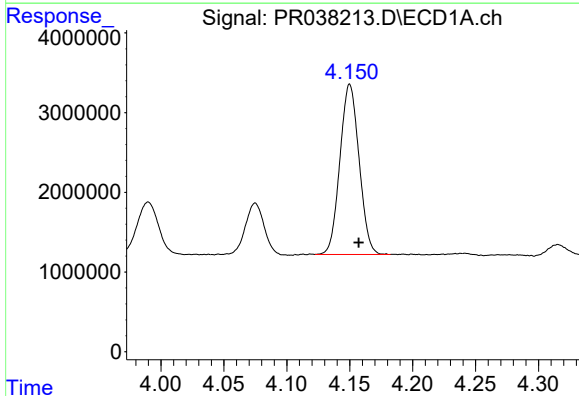
R.T.: 4.075 min
 Delta R.T.: -0.007 min
 Response: 6603474
 Conc: 351.00 ng/ml

Instrument :
 ECD_R
 ClientSampled :



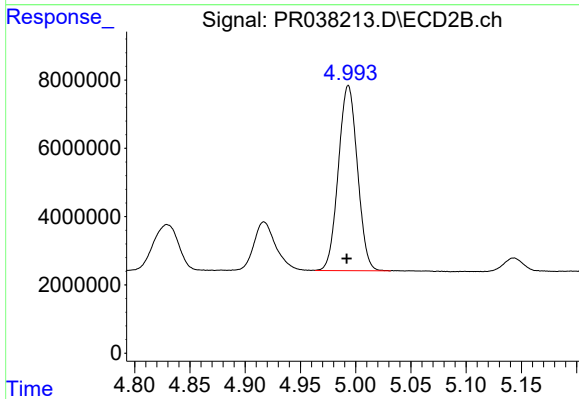
#9 AR-1221-2

R.T.: 4.917 min
 Delta R.T.: 0.002 min
 Response: 19499127
 Conc: 375.85 ng/ml



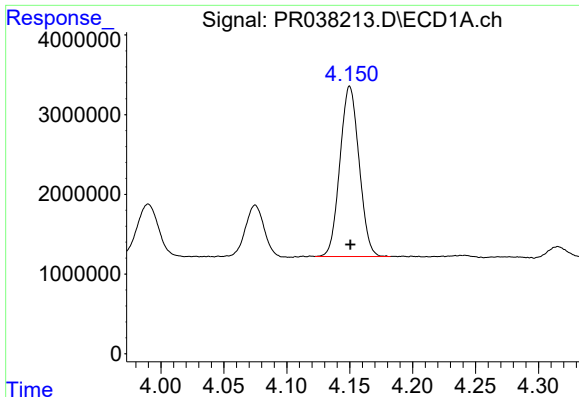
#10 AR-1221-3

R.T.: 4.150 min
 Delta R.T.: -0.007 min
 Response: 22632646
 Conc: 379.86 ng/ml



#10 AR-1221-3

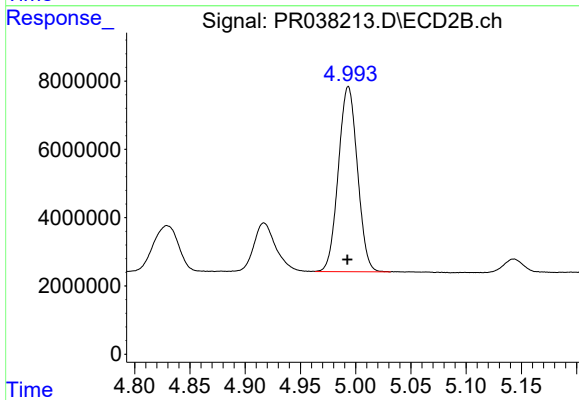
R.T.: 4.993 min
 Delta R.T.: 0.001 min
 Response: 65238244
 Conc: 388.69 ng/ml



#11 AR-1232-1

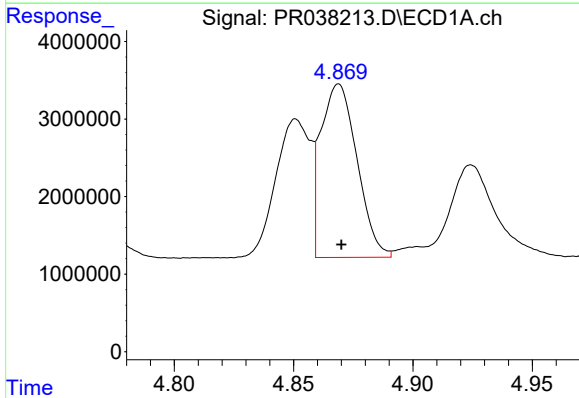
R.T.: 4.150 min
 Delta R.T.: 0.000 min
 Response: 22632646
 Conc: 500.00 ng/ml

Instrument :
 ECD_R
 ClientSampleId :



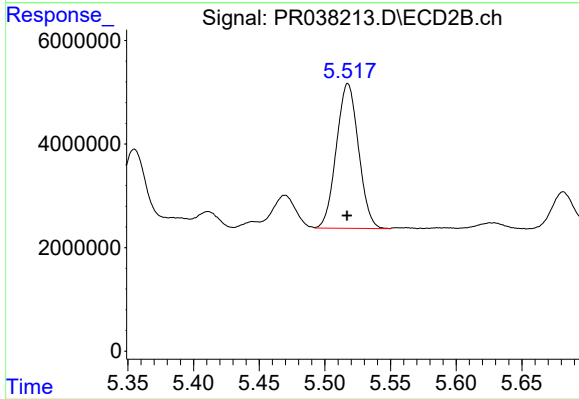
#11 AR-1232-1

R.T.: 4.993 min
 Delta R.T.: 0.000 min
 Response: 65238244
 Conc: 500.00 ng/ml



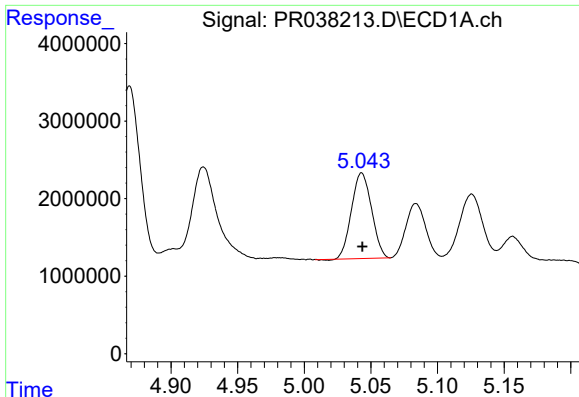
#12 AR-1232-2

R.T.: 4.869 min
 Delta R.T.: -0.001 min
 Response: 23627328
 Conc: 500.00 ng/ml



#12 AR-1232-2

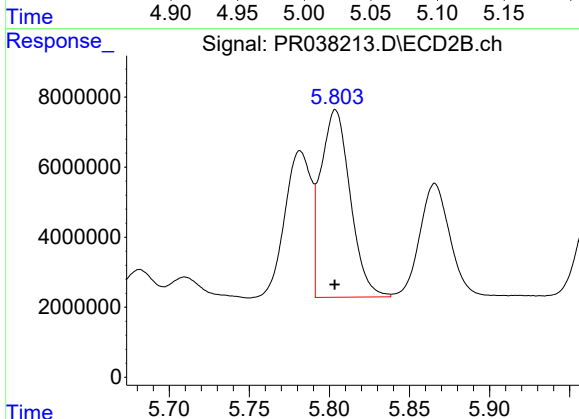
R.T.: 5.518 min
 Delta R.T.: 0.000 min
 Response: 32800360
 Conc: 500.00 ng/ml



#13 AR-1232-3

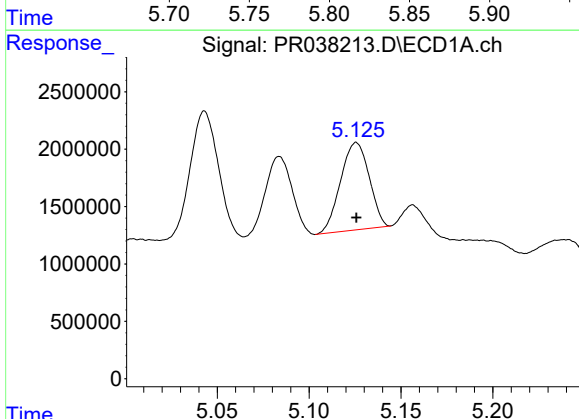
R.T.: 5.043 min
Delta R.T.: 0.000 min
Response: 11560039
Conc: 500.00 ng/ml

Instrument :
ECD_R
ClientSampled :



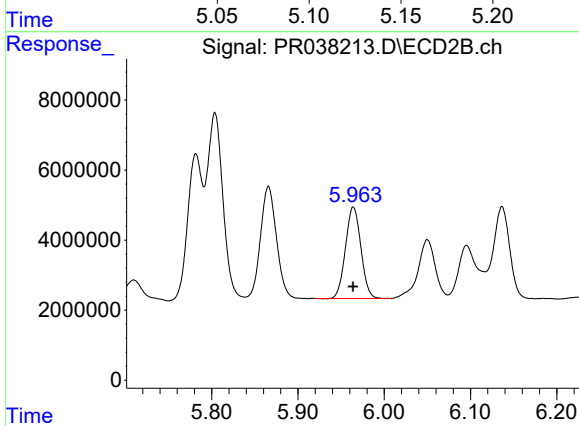
#13 AR-1232-3

R.T.: 5.804 min
Delta R.T.: 0.000 min
Response: 68678391
Conc: 500.00 ng/ml



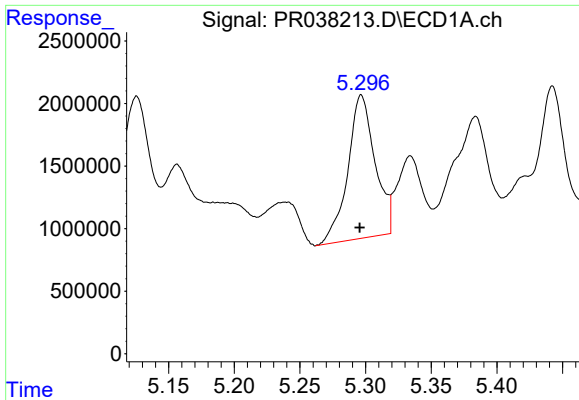
#14 AR-1232-4

R.T.: 5.126 min
Delta R.T.: 0.000 min
Response: 8251980
Conc: 500.00 ng/ml



#14 AR-1232-4

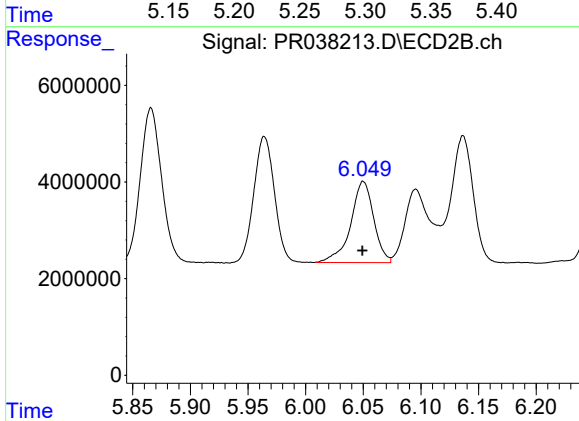
R.T.: 5.964 min
Delta R.T.: 0.000 min
Response: 32451719
Conc: 500.00 ng/ml



#15 AR-1232-5

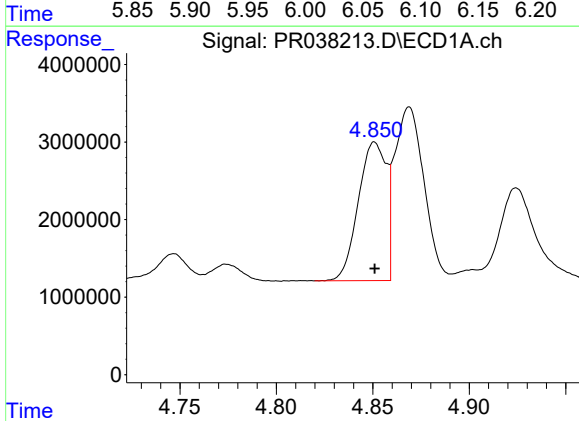
R.T.: 5.297 min
 Delta R.T.: 0.001 min
 Response: 16535985
 Conc: 500.00 ng/ml

Instrument :
 ECD_R
 ClientSampled :



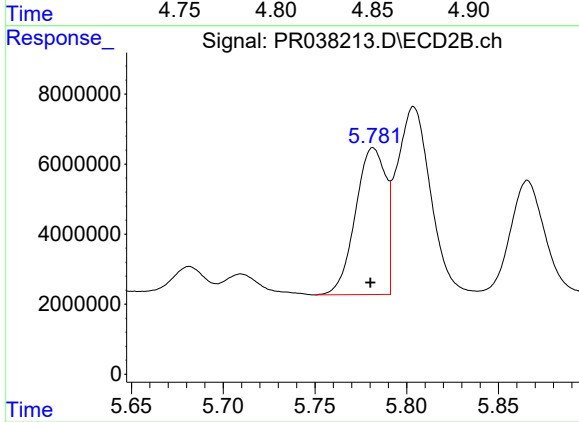
#15 AR-1232-5

R.T.: 6.050 min
 Delta R.T.: 0.000 min
 Response: 23396338
 Conc: 500.00 ng/ml



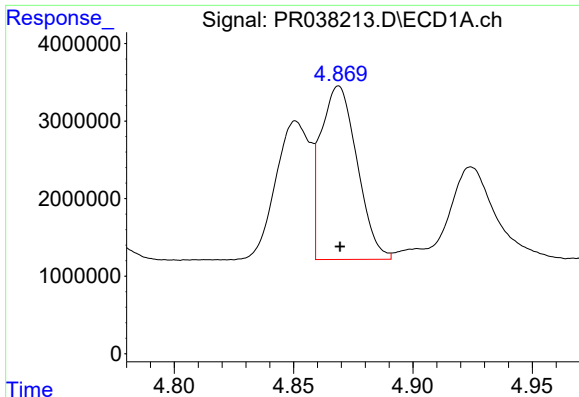
#16 AR-1242-1

R.T.: 4.851 min
 Delta R.T.: 0.000 min
 Response: 18057084
 Conc: 265.89 ng/ml



#16 AR-1242-1

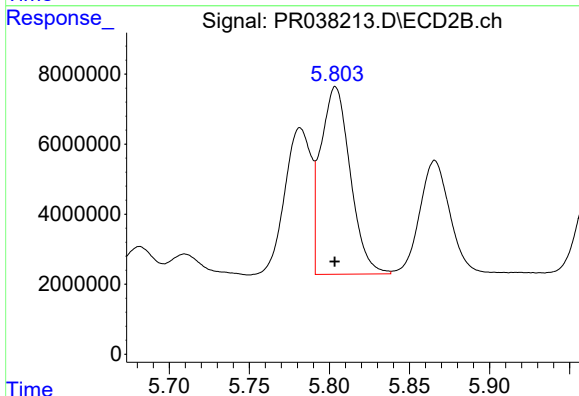
R.T.: 5.782 min
 Delta R.T.: 0.001 min
 Response: 48125283
 Conc: 274.42 ng/ml



#17 AR-1242-2

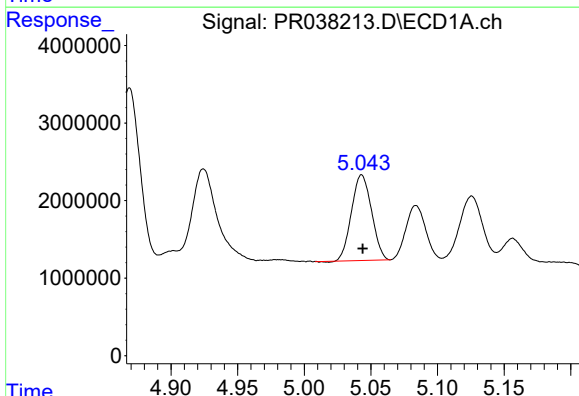
R.T.: 4.869 min
 Delta R.T.: 0.000 min
 Response: 23627328
 Conc: 253.87 ng/ml

Instrument :
 ECD_R
 ClientSampleId :



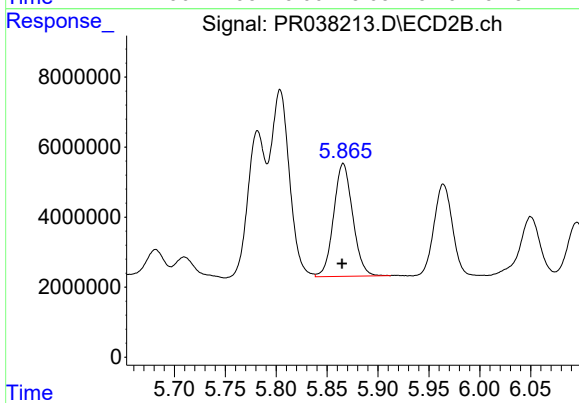
#17 AR-1242-2

R.T.: 5.804 min
 Delta R.T.: 0.000 min
 Response: 68678391
 Conc: 272.17 ng/ml



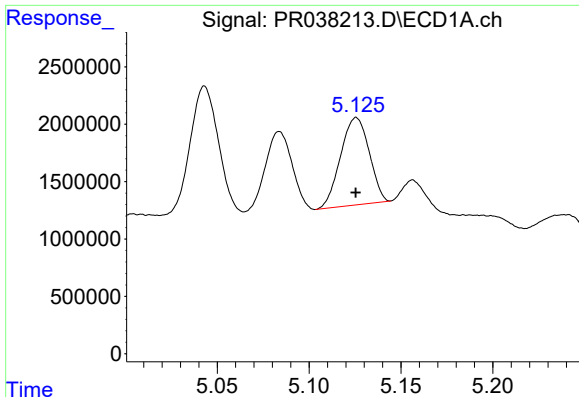
#18 AR-1242-3

R.T.: 5.043 min
 Delta R.T.: 0.000 min
 Response: 11560039
 Conc: 234.77 ng/ml



#18 AR-1242-3

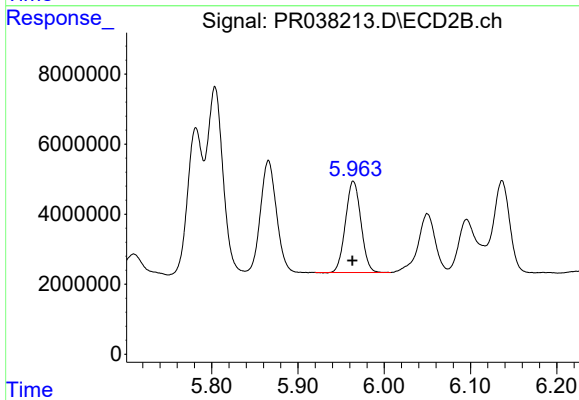
R.T.: 5.866 min
 Delta R.T.: 0.001 min
 Response: 41974606
 Conc: 276.22 ng/ml



#19 AR-1242-4

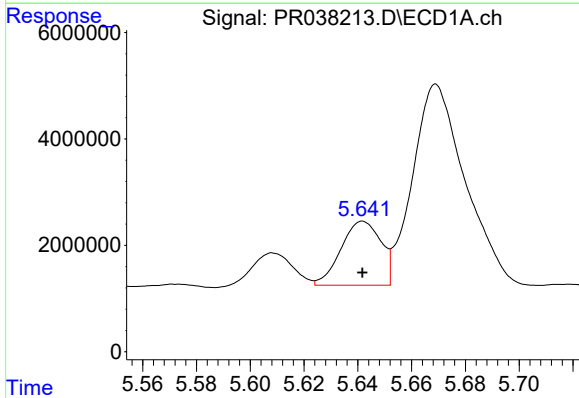
R.T.: 5.126 min
 Delta R.T.: 0.000 min
 Response: 8251980
 Conc: 176.95 ng/ml

Instrument :
 ECD_R
 ClientSampleId :



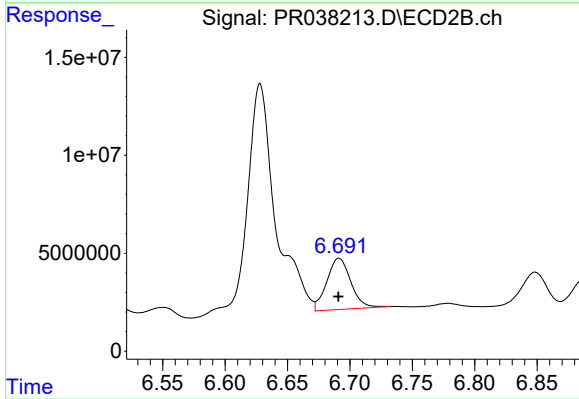
#19 AR-1242-4

R.T.: 5.964 min
 Delta R.T.: 0.000 min
 Response: 32451719
 Conc: 257.30 ng/ml



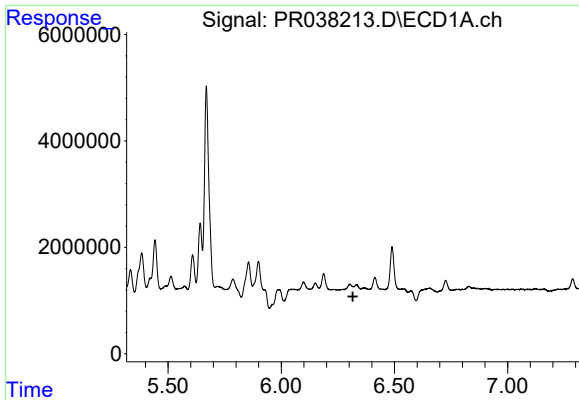
#20 AR-1242-5

R.T.: 5.642 min
 Delta R.T.: 0.000 min
 Response: 12397465
 Conc: 197.33 ng/ml



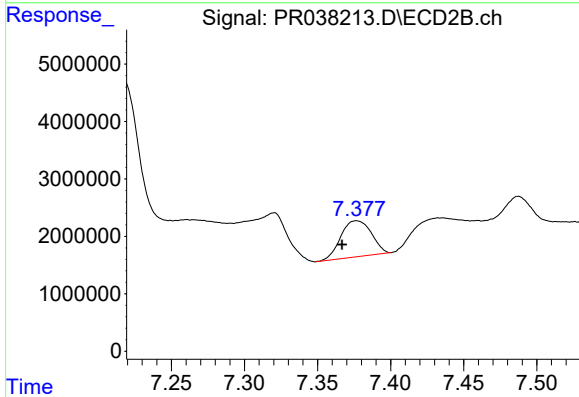
#20 AR-1242-5

R.T.: 6.691 min
 Delta R.T.: 0.000 min
 Response: 34975388
 Conc: 254.53 ng/ml

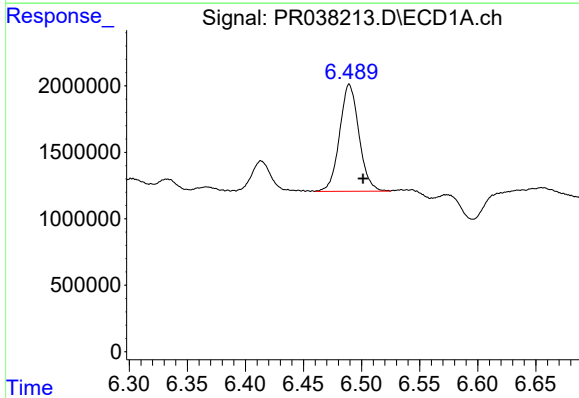


#31 AR-1260-1
 R.T.: 0.000 min
 Exp R.T.: 6.317 min
 Response: 0
 Conc: N.D.

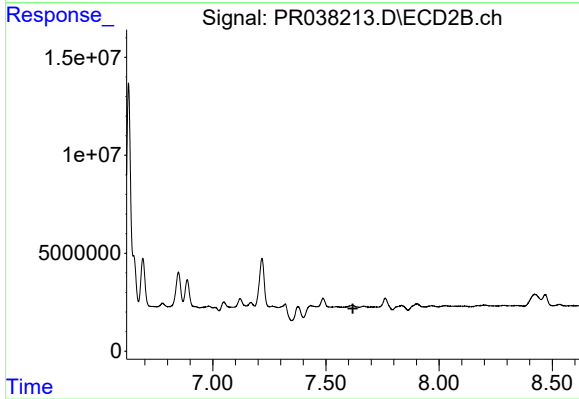
Instrument :
 ECD_R
 ClientSampled :



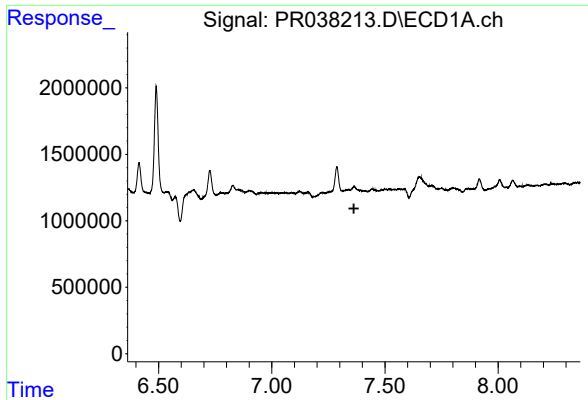
#31 AR-1260-1
 R.T.: 7.377 min
 Delta R.T.: 0.010 min
 Response: 9109810
 Conc: 38.20 ng/ml



#32 AR-1260-2
 R.T.: 6.489 min
 Delta R.T.: -0.012 min
 Response: 9344840
 Conc: 63.92 ng/ml



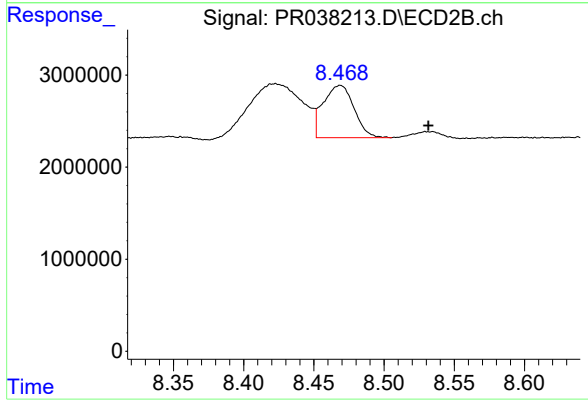
#32 AR-1260-2
 R.T.: 0.000 min
 Exp R.T.: 7.619 min
 Response: 0
 Conc: N.D.



#35 AR-1260-5

R.T.: 0.000 min
Exp R.T.: 7.363 min
Response: 0
Conc: N.D.

Instrument :
ECD_R
ClientSampleId :



#35 AR-1260-5

R.T.: 8.469 min
Delta R.T.: -0.063 min
Response: 8665181
Conc: 16.90 ng/ml