

Data Path : Z:\pestpcbsrv\HPCHEM1\ECD_R\Data\PR052319\
 Data File : PR038208.D
 Signal(s) : Signal #1: ECD1A.ch Signal #2: ECD2B.ch
 Acq On : 23 May 2019 10:28
 Operator : SM\MA
 Sample : AR1660ICC750
 Misc :
 ALS Vial : 82 Sample Multiplier: 1

Instrument :
 ECD_R
 ClientSampleId :
 AR1660ICC750

Integration File signal 1: autoint1.e
 Integration File signal 2: autoint2.e
 Quant Time: May 23 11:22:11 2019
 Quant Method : Z:\pestpcbsrv\HPCHEM1\ECD_R\Method\PR052319.M
 Quant Title : GC EXTRACTABLES
 QLast Update : Thu May 23 11:16:41 2019
 Response via : Initial Calibration
 Integrator: ChemStation

Volume Inj. : 2 µl
 Signal #1 Phase : ZB-MR2 Signal #2 Phase: ZB-MR2
 Signal #1 Info : 30Mx0.32mmx 0.50µ Signal #2 Info : 30M x 0.32mm x 0.25µm

Compound	RT#1	RT#2	Resp#1	Resp#2	ng/ml	ng/ml

System Monitoring Compounds						
1) SA Tetrachlo...	3.778	4.626	127.0E6	381.4E6	76.488	76.065
2) SA Decachlor...	8.759	10.381	140.1E6	309.2E6	74.996	73.217
Target Compounds						
3) L1 AR-1016-1	4.851	5.781	52697267	136.4E6	744.057	744.517
4) L1 AR-1016-2	4.870	5.804	72285370	197.0E6	747.838	743.317
5) L1 AR-1016-3	5.043	5.866	38521582	117.7E6	743.220	740.308
6) L1 AR-1016-4	5.084	5.965	30191493	96706098	739.661	743.946
7) L1 AR-1016-5	5.295	6.254	40260946	97509934	739.802	741.092
31) L7 AR-1260-1	6.317	7.366	75051104	171.9E6	738.178	741.772
32) L7 AR-1260-2	6.502	7.619	102.4E6	205.9E6	737.059	740.837
33) L7 AR-1260-3	6.656	7.974	86802536	152.9E6	738.416	739.215
34) L7 AR-1260-4	7.124	8.204	70064314	178.5E6	738.228	739.001
35) L7 AR-1260-5	7.363	8.531	199.3E6	370.8E6	745.465	739.942

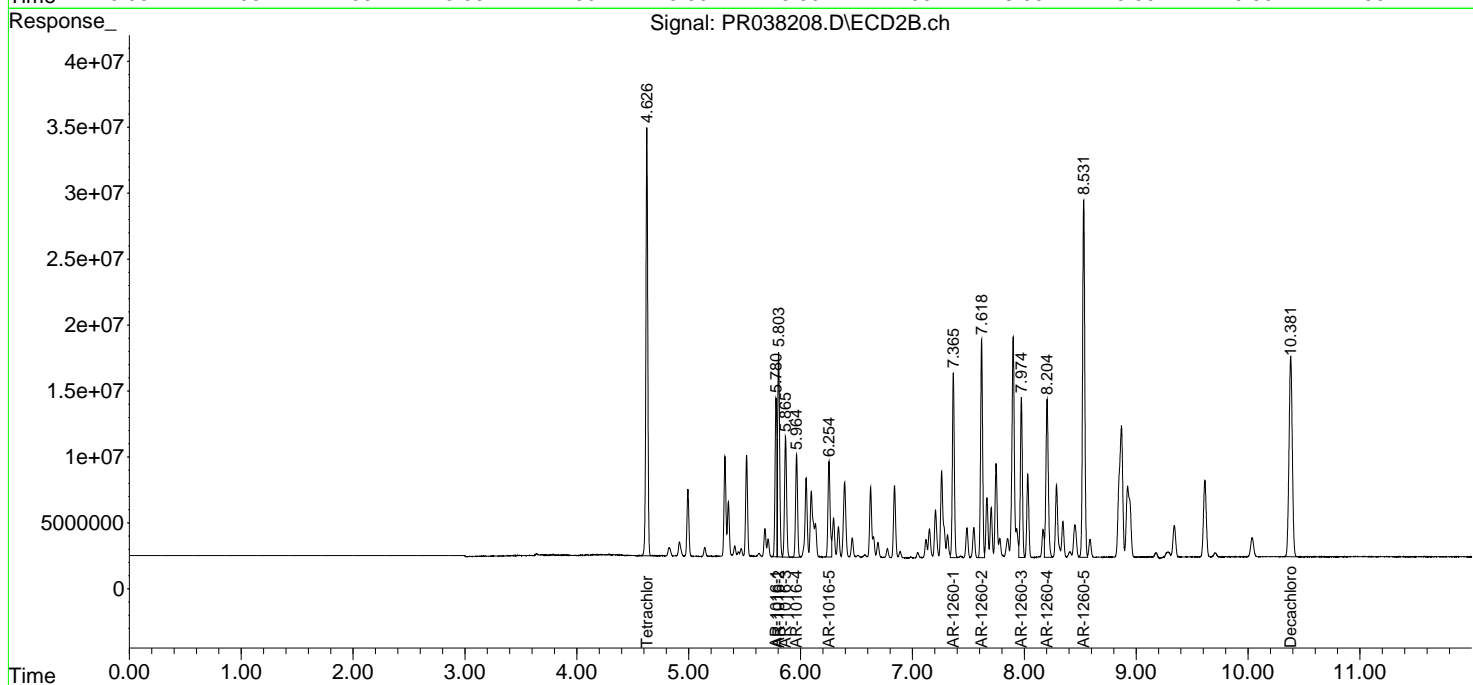
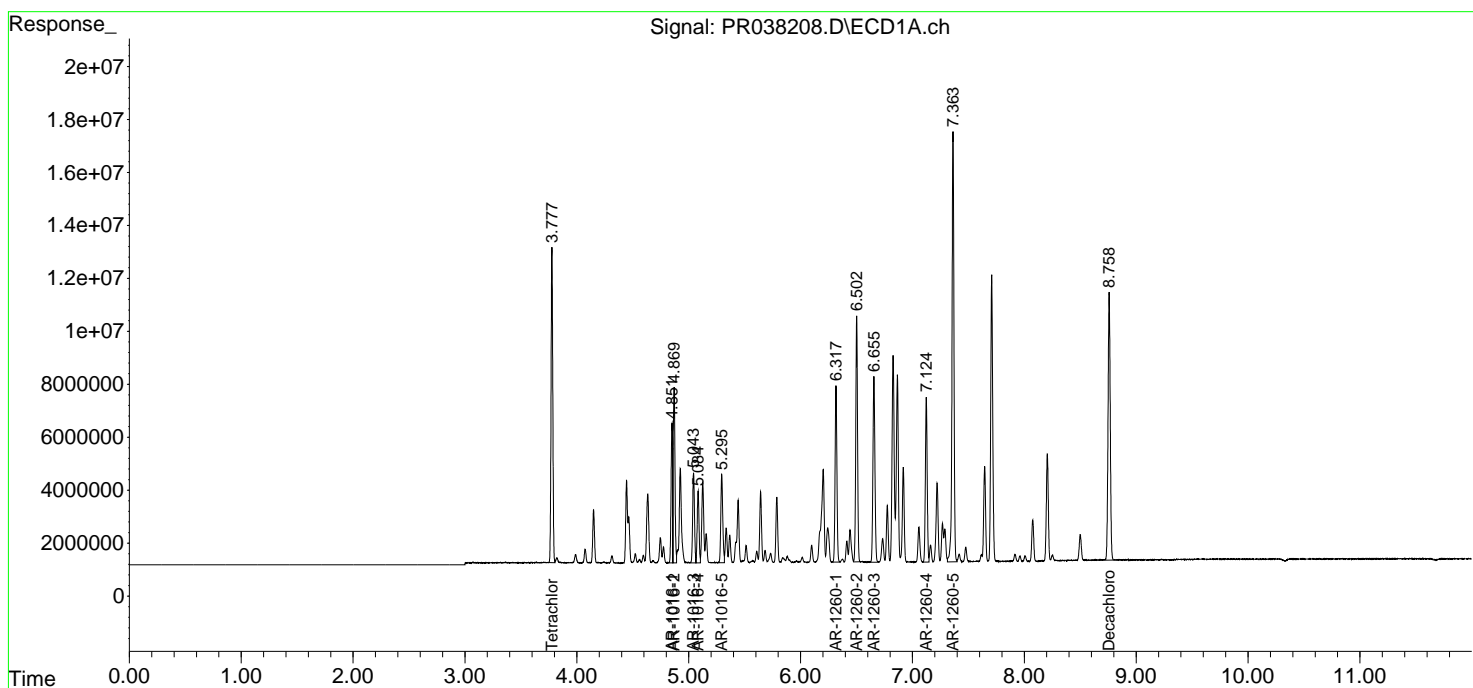
(f)=RT Delta > 1/2 Window (#)=Amounts differ by > 25% (m)=manual int.

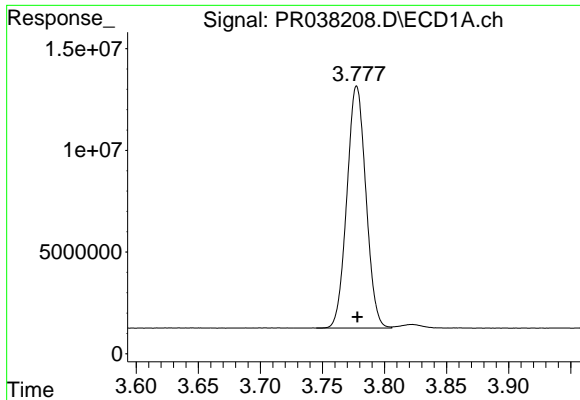
Data Path : Z:\pestpcbsrv\HPCHEM1\ECD_R\Data\PR052319\
 Data File : PR038208.D
 Signal(s) : Signal #1: ECD1A.ch Signal #2: ECD2B.ch
 Acq On : 23 May 2019 10:28
 Operator : SM\MA
 Sample : AR1660ICC750
 Misc :
 ALS Vial : 82 Sample Multiplier: 1

Instrument :
 ECD_R
 ClientSampleId :
 AR1660ICC750

Integration File signal 1: autoint1.e
 Integration File signal 2: autoint2.e
 Quant Time: May 23 11:22:11 2019
 Quant Method : Z:\pestpcbsrv\HPCHEM1\ECD_R\Method\PR052319.M
 Quant Title : GC EXTRACTABLES
 QLast Update : Thu May 23 11:16:41 2019
 Response via : Initial Calibration
 Integrator: ChemStation

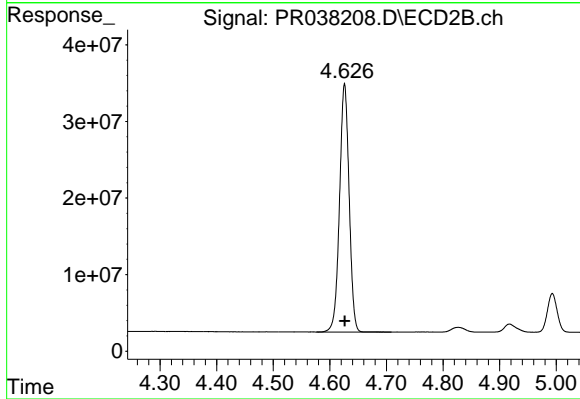
Volume Inj. : 2 µl
 Signal #1 Phase : ZB-MR1 Signal #2 Phase: ZB-MR2
 Signal #1 Info : 30Mx0.32mmx 0.50µm Signal #2 Info : 30M x 0.32mm x 0.25µm



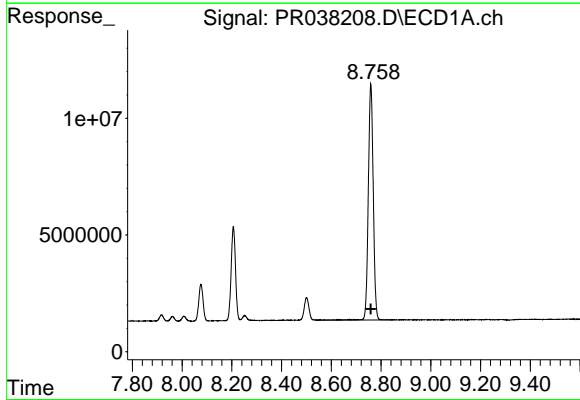


#1 Tetrachloro-m-xylene
 R.T.: 3.778 min
 Delta R.T.: 0.000 min
 Response: 127004455
 Conc: 76.49 ng/ml

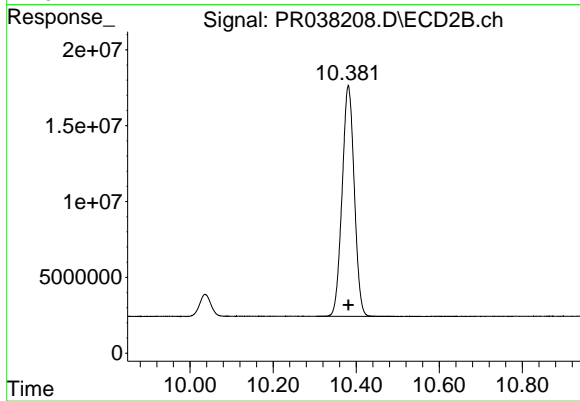
Instrument :
 ECD_R
 ClientSampleId :
 AR1660ICC750



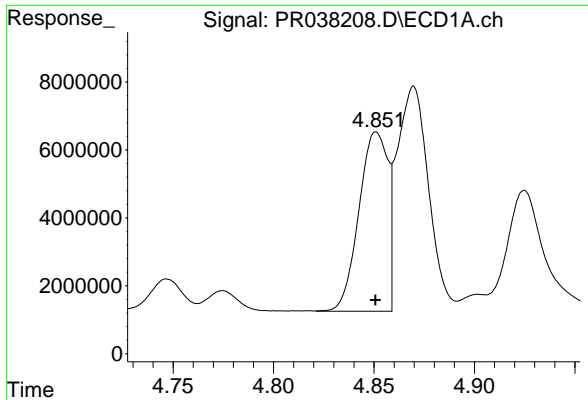
#1 Tetrachloro-m-xylene
 R.T.: 4.626 min
 Delta R.T.: 0.000 min
 Response: 381419594
 Conc: 76.07 ng/ml



#2 Decachlorobiphenyl
 R.T.: 8.759 min
 Delta R.T.: 0.000 min
 Response: 140095451
 Conc: 75.00 ng/ml



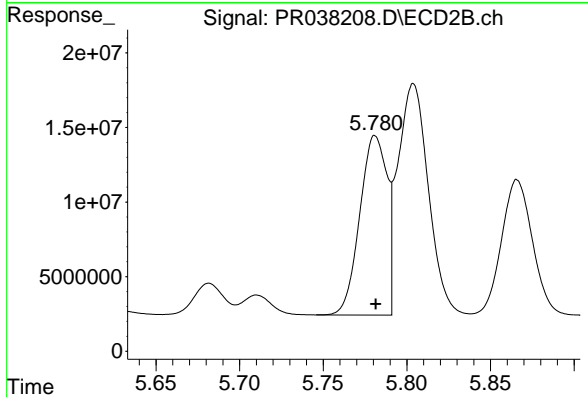
#2 Decachlorobiphenyl
 R.T.: 10.381 min
 Delta R.T.: 0.000 min
 Response: 309184231
 Conc: 73.22 ng/ml



#3 AR-1016-1

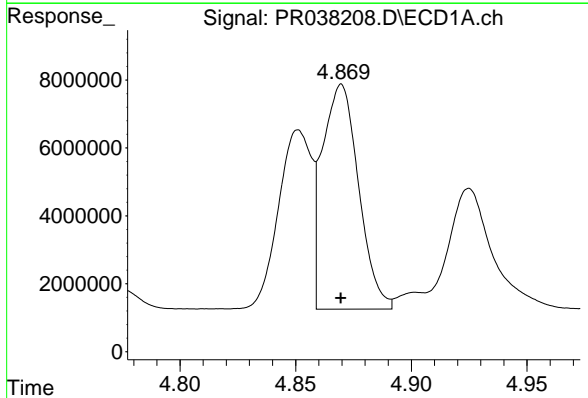
R.T.: 4.851 min
 Delta R.T.: 0.000 min
 Response: 52697267
 Conc: 744.06 ng/ml

Instrument :
 ECD_R
ClientSampled :
 AR1660ICC750



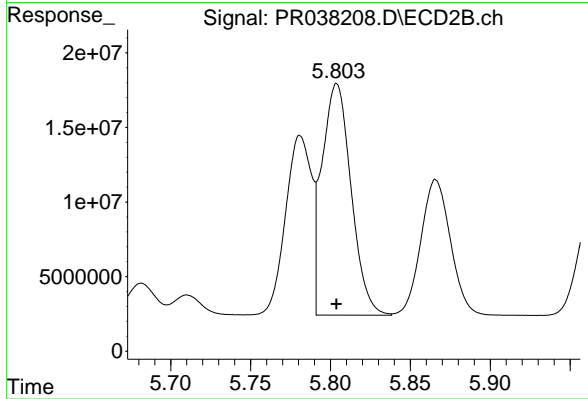
#3 AR-1016-1

R.T.: 5.781 min
 Delta R.T.: 0.000 min
 Response: 136436228
 Conc: 744.52 ng/ml



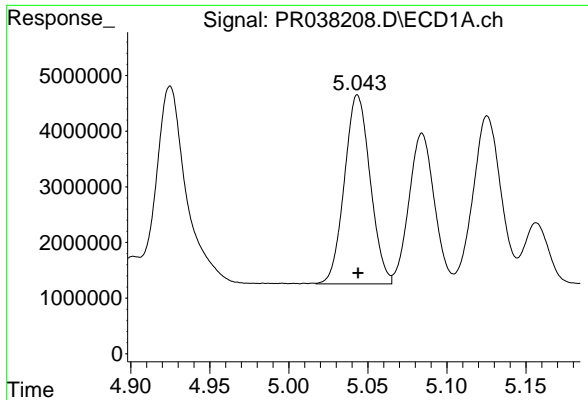
#4 AR-1016-2

R.T.: 4.870 min
 Delta R.T.: 0.000 min
 Response: 72285370
 Conc: 747.84 ng/ml



#4 AR-1016-2

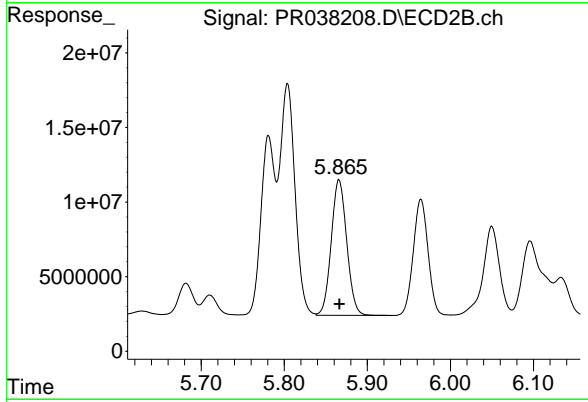
R.T.: 5.804 min
 Delta R.T.: 0.000 min
 Response: 196961340
 Conc: 743.32 ng/ml



#5 AR-1016-3

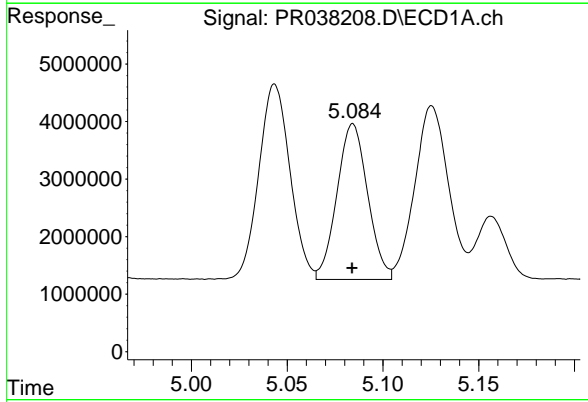
R.T.: 5.043 min
 Delta R.T.: 0.000 min
 Response: 38521582
 Conc: 743.22 ng/ml

Instrument :
 ECD_R
ClientSampled :
 AR1660ICC750



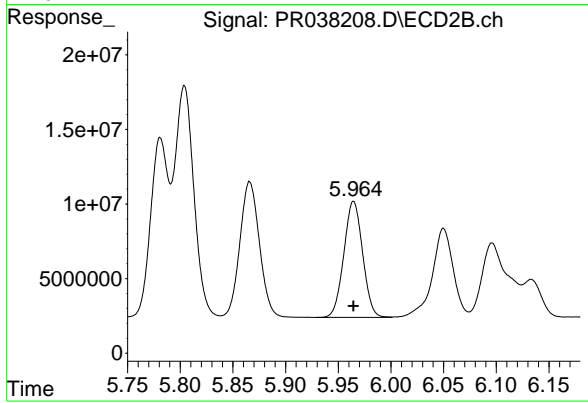
#5 AR-1016-3

R.T.: 5.866 min
 Delta R.T.: 0.000 min
 Response: 117720048
 Conc: 740.31 ng/ml



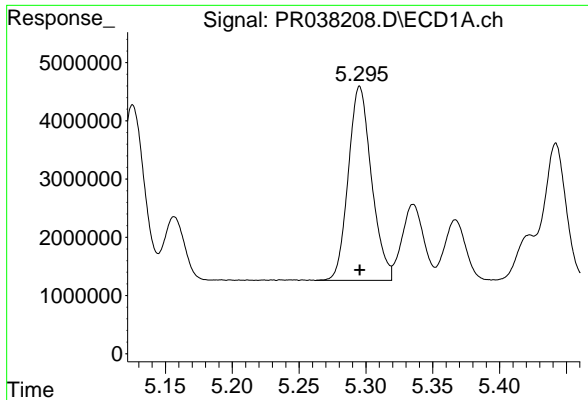
#6 AR-1016-4

R.T.: 5.084 min
 Delta R.T.: 0.000 min
 Response: 30191493
 Conc: 739.66 ng/ml



#6 AR-1016-4

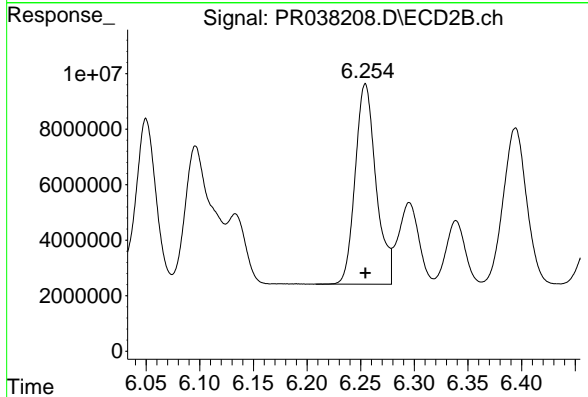
R.T.: 5.965 min
 Delta R.T.: 0.000 min
 Response: 96706098
 Conc: 743.95 ng/ml



#7 AR-1016-5

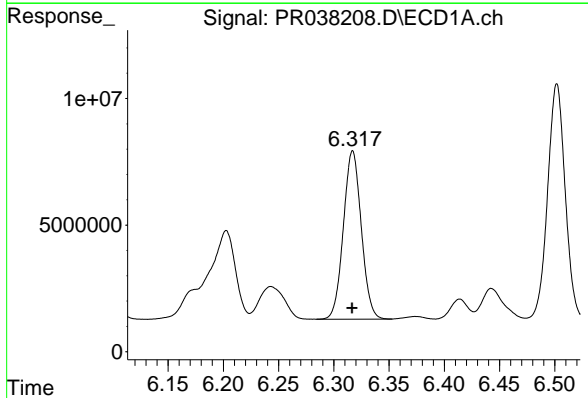
R.T.: 5.295 min
Delta R.T.: 0.000 min
Response: 40260946
Conc: 739.80 ng/ml

Instrument :
ECD_R
ClientSampleId :
AR1660ICC750



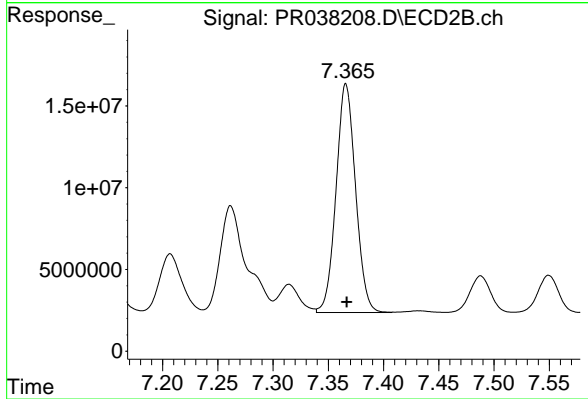
#7 AR-1016-5

R.T.: 6.254 min
Delta R.T.: 0.000 min
Response: 97509934
Conc: 741.09 ng/ml



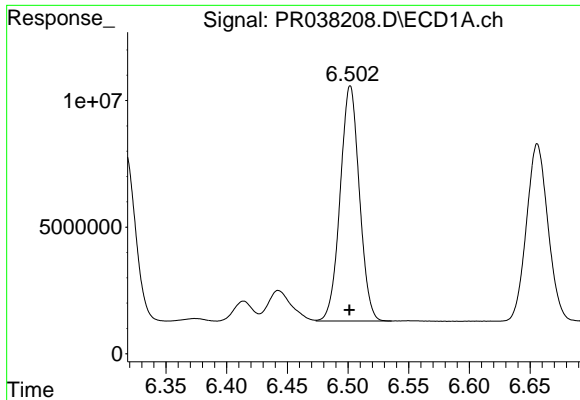
#31 AR-1260-1

R.T.: 6.317 min
Delta R.T.: 0.000 min
Response: 75051104
Conc: 738.18 ng/ml



#31 AR-1260-1

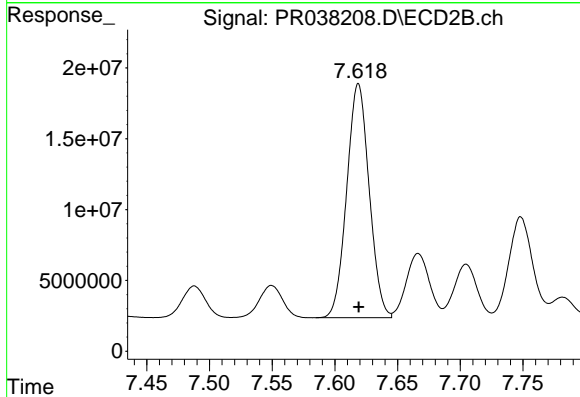
R.T.: 7.366 min
Delta R.T.: 0.000 min
Response: 171926189
Conc: 741.77 ng/ml



#32 AR-1260-2

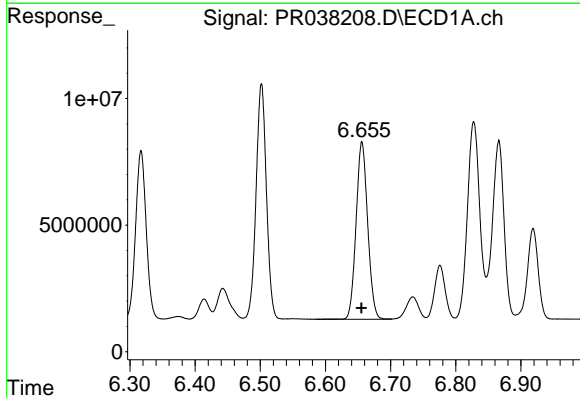
R.T.: 6.502 min
 Delta R.T.: 0.000 min
 Response: 102431192
 Conc: 737.06 ng/ml

Instrument :
 ECD_R
ClientSampleId :
 AR1660ICC750



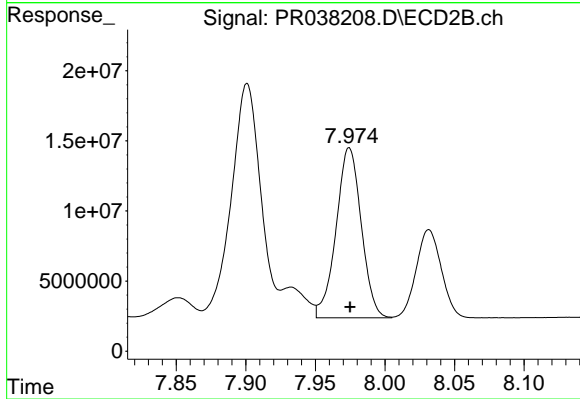
#32 AR-1260-2

R.T.: 7.619 min
 Delta R.T.: 0.000 min
 Response: 205942430
 Conc: 740.84 ng/ml



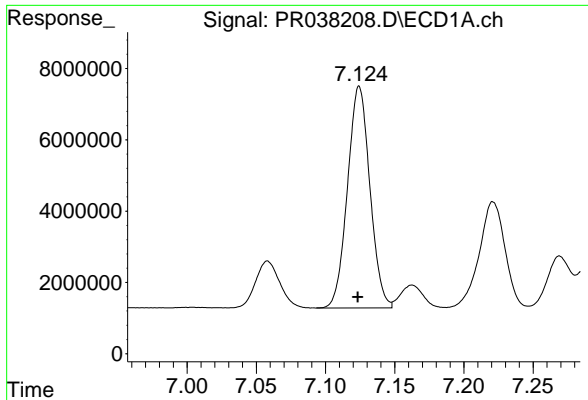
#33 AR-1260-3

R.T.: 6.656 min
 Delta R.T.: 0.000 min
 Response: 86802536
 Conc: 738.42 ng/ml



#33 AR-1260-3

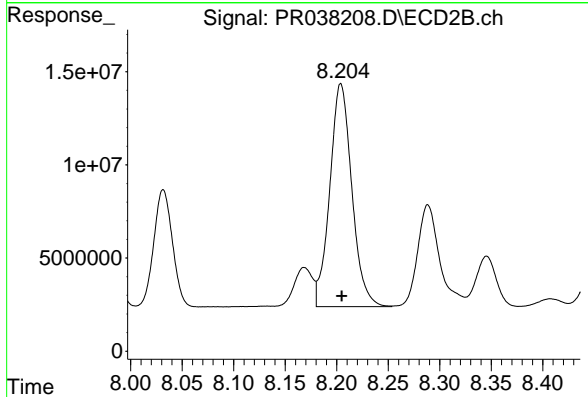
R.T.: 7.974 min
 Delta R.T.: 0.000 min
 Response: 152942842
 Conc: 739.21 ng/ml



#34 AR-1260-4

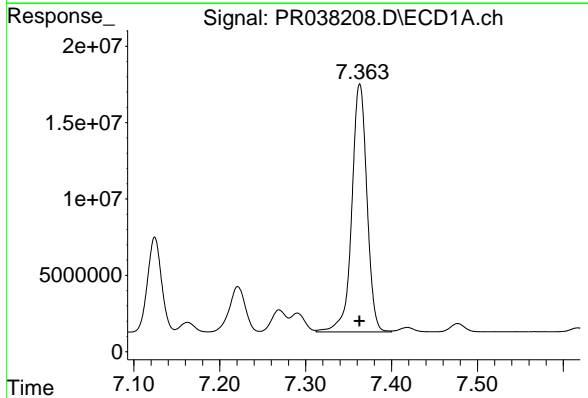
R.T.: 7.124 min
 Delta R.T.: 0.000 min
 Response: 70064314
 Conc: 738.23 ng/ml

Instrument :
 ECD_R
ClientSampled :
 AR1660ICC750



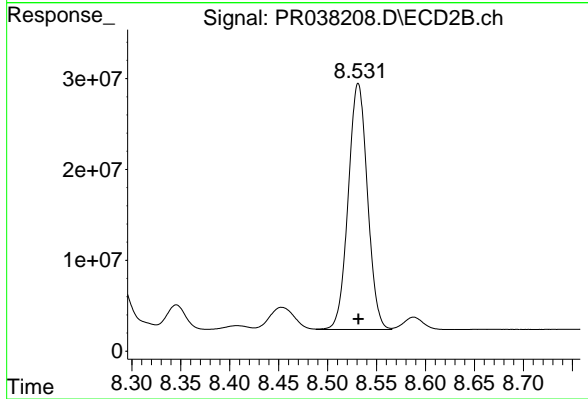
#34 AR-1260-4

R.T.: 8.204 min
 Delta R.T.: -0.001 min
 Response: 178488021
 Conc: 739.00 ng/ml



#35 AR-1260-5

R.T.: 7.363 min
 Delta R.T.: 0.000 min
 Response: 199299477
 Conc: 745.46 ng/ml



#35 AR-1260-5

R.T.: 8.531 min
 Delta R.T.: 0.000 min
 Response: 370800152
 Conc: 739.94 ng/ml