

Data Path : Z:\pestpcbsrv\HPCHEM1\ECD_R\Data\PR052319\
 Data File : PR038210.D
 Signal(s) : Signal #1: ECD1A.ch Signal #2: ECD2B.ch
 Acq On : 23 May 2019 10:57
 Operator : SM\MA
 Sample : AR1660ICC250
 Misc :
 ALS Vial : 84 Sample Multiplier: 1

Instrument :
 ECD_R
 ClientSampleId :
 AR1660ICC250

Integration File signal 1: autoint1.e
 Integration File signal 2: autoint2.e
 Quant Time: May 23 11:23:50 2019
 Quant Method : Z:\pestpcbsrv\HPCHEM1\ECD_R\Method\PR052319.M
 Quant Title : GC EXTRACTABLES
 QLast Update : Thu May 23 11:16:41 2019
 Response via : Initial Calibration
 Integrator: ChemStation

Volume Inj. : 2 µl
 Signal #1 Phase : ZB-MR2 Signal #2 Phase: ZB-MR2
 Signal #1 Info : 30Mx0.32mmx 0.50µ Signal #2 Info : 30M x 0.32mm x 0.25µm

Compound	RT#1	RT#2	Resp#1	Resp#2	ng/ml	ng/ml

System Monitoring Compounds						
1) SA Tetrachlo...	3.777	4.626	40484708	123.6E6	24.382	24.649
2) SA Decachlor...	8.759	10.380	48178960	107.4E6	25.791	25.438
Target Compounds						
3) L1 AR-1016-1	4.851	5.781	18022692	46364756	254.471	253.007
4) L1 AR-1016-2	4.869	5.804	24091223	66385767	249.239	250.535
5) L1 AR-1016-3	5.043	5.866	13141211	40523940	253.541	254.844
6) L1 AR-1016-4	5.084	5.965	10543720	32946835	258.310	253.455
7) L1 AR-1016-5	5.295	6.254	14071416	33447336	258.565	254.205
31) L7 AR-1260-1	6.317	7.366	26299760	58639951	258.676	253.001
32) L7 AR-1260-2	6.501	7.619	36209054	70245174	260.548	252.693
33) L7 AR-1260-3	6.655	7.975	30441591	52422492	258.962	253.372
34) L7 AR-1260-4	7.124	8.204	24379996	61136575	256.878	253.126
35) L7 AR-1260-5	7.362	8.531	66954737	123.2E6	250.439	245.912

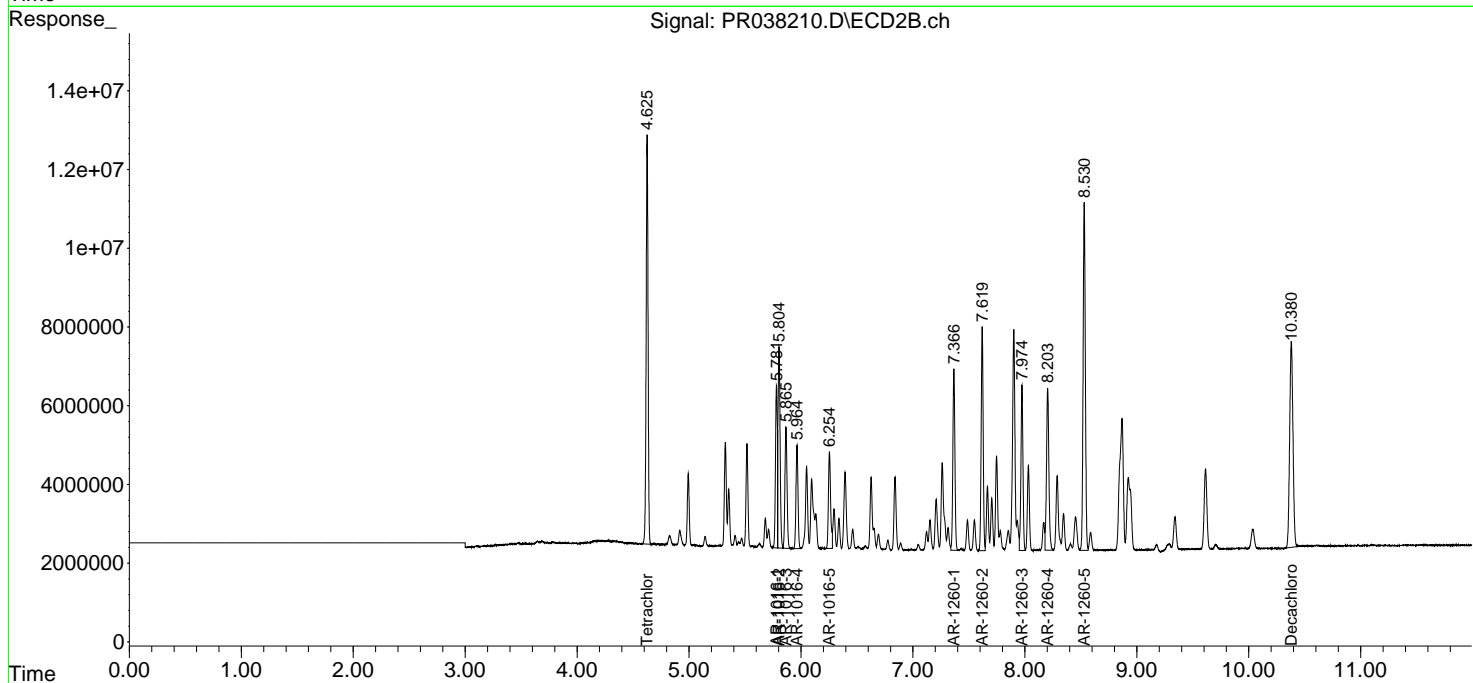
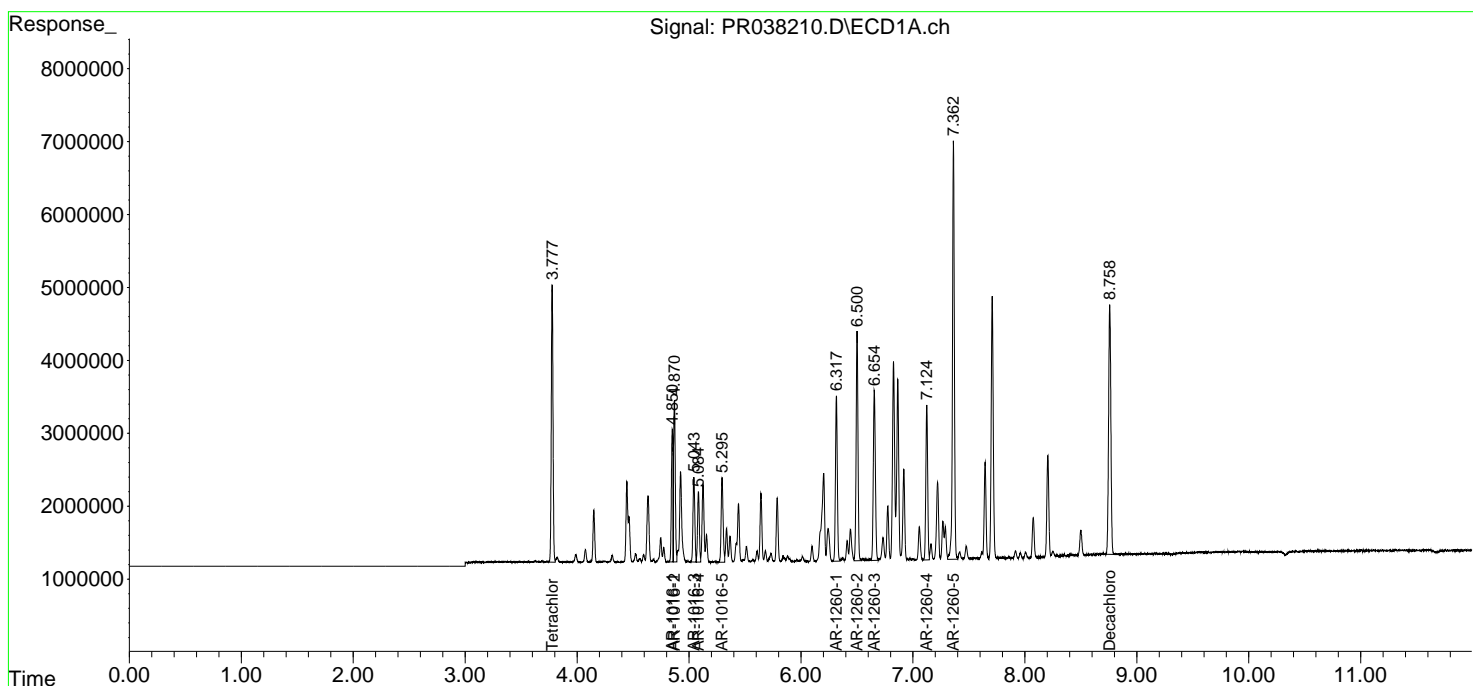
(f)=RT Delta > 1/2 Window (#)=Amounts differ by > 25% (m)=manual int.

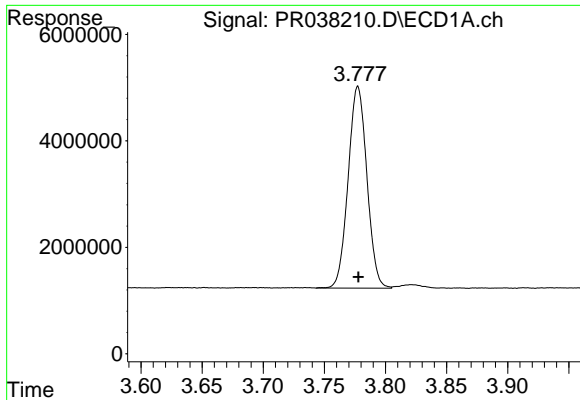
Data Path : Z:\pestpcbsrv\HPCHEM1\ECD_R\Data\PR052319\
 Data File : PR038210.D
 Signal(s) : Signal #1: ECD1A.ch Signal #2: ECD2B.ch
 Acq On : 23 May 2019 10:57
 Operator : SM\MA
 Sample : AR1660ICC250
 Misc :
 ALS Vial : 84 Sample Multiplier: 1

Instrument :
 ECD_R
 ClientSampled :
 AR1660ICC250

Integration File signal 1: autoint1.e
 Integration File signal 2: autoint2.e
 Quant Time: May 23 11:23:50 2019
 Quant Method : Z:\pestpcbsrv\HPCHEM1\ECD_R\Method\PR052319.M
 Quant Title : GC EXTRACTABLES
 QLast Update : Thu May 23 11:16:41 2019
 Response via : Initial Calibration
 Integrator: ChemStation

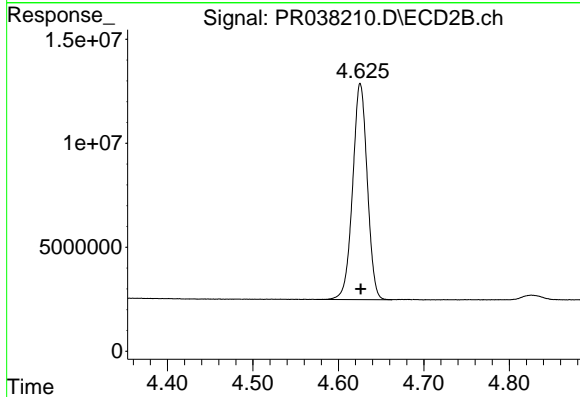
Volume Inj. : 2 µl
 Signal #1 Phase : ZB-MR1 Signal #2 Phase: ZB-MR2
 Signal #1 Info : 30Mx0.32mmx 0.50µ Signal #2 Info : 30M x 0.32mm x 0.25µm



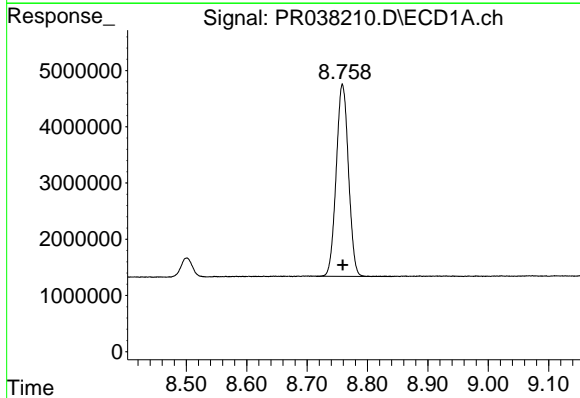


#1 Tetrachloro-m-xylene
 R.T.: 3.777 min
 Delta R.T.: 0.000 min
 Response: 40484708
 Conc: 24.38 ng/ml

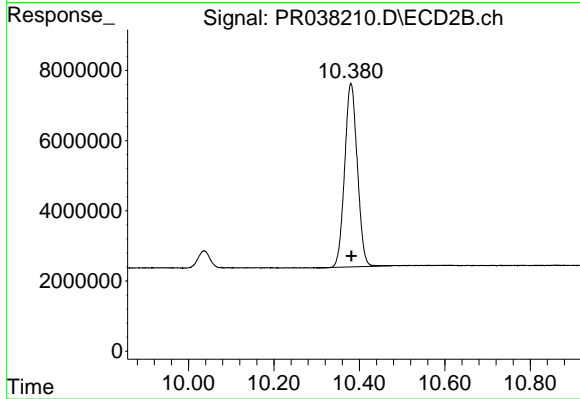
Instrument :
 ECD_R
 ClientSampleId :
 AR1660ICC250



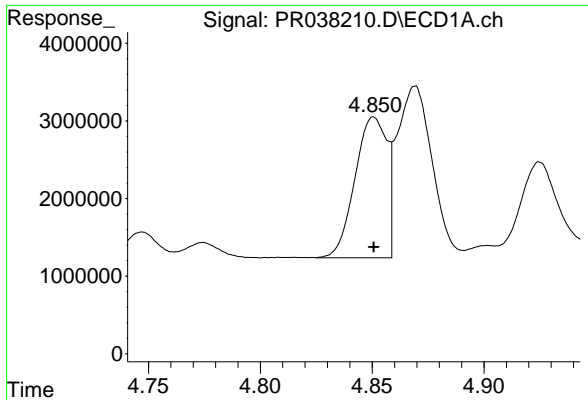
#1 Tetrachloro-m-xylene
 R.T.: 4.626 min
 Delta R.T.: 0.000 min
 Response: 123600711
 Conc: 24.65 ng/ml



#2 Decachlorobiphenyl
 R.T.: 8.759 min
 Delta R.T.: 0.000 min
 Response: 48178960
 Conc: 25.79 ng/ml



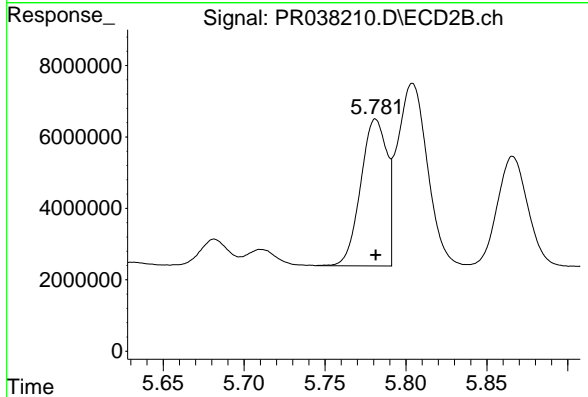
#2 Decachlorobiphenyl
 R.T.: 10.380 min
 Delta R.T.: 0.000 min
 Response: 107422197
 Conc: 25.44 ng/ml



#3 AR-1016-1

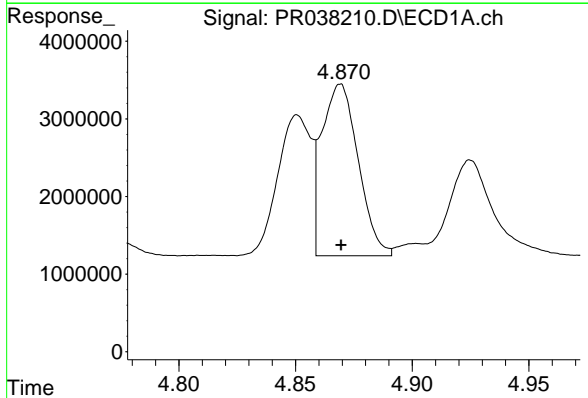
R.T.: 4.851 min
 Delta R.T.: 0.000 min
 Response: 18022692
 Conc: 254.47 ng/ml

Instrument :
 ECD_R
ClientSampleId :
 AR1660ICC250



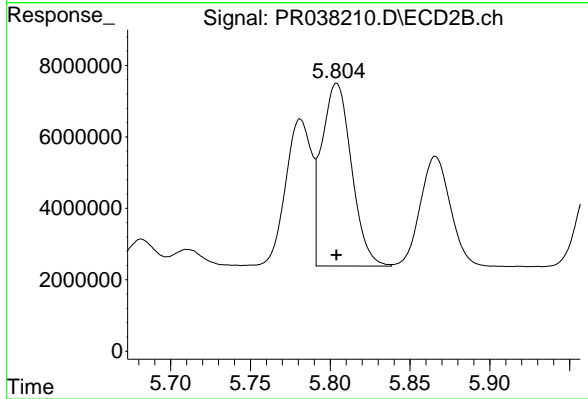
#3 AR-1016-1

R.T.: 5.781 min
 Delta R.T.: 0.000 min
 Response: 46364756
 Conc: 253.01 ng/ml



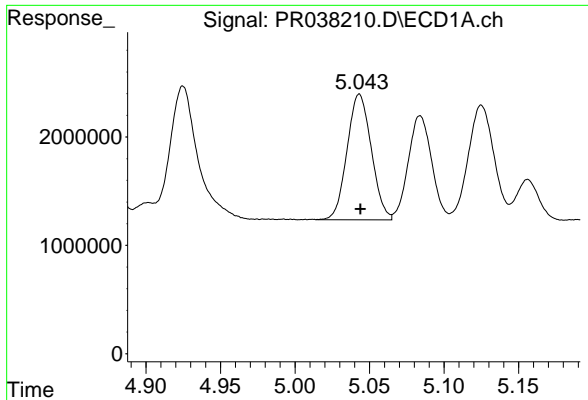
#4 AR-1016-2

R.T.: 4.869 min
 Delta R.T.: 0.000 min
 Response: 24091223
 Conc: 249.24 ng/ml



#4 AR-1016-2

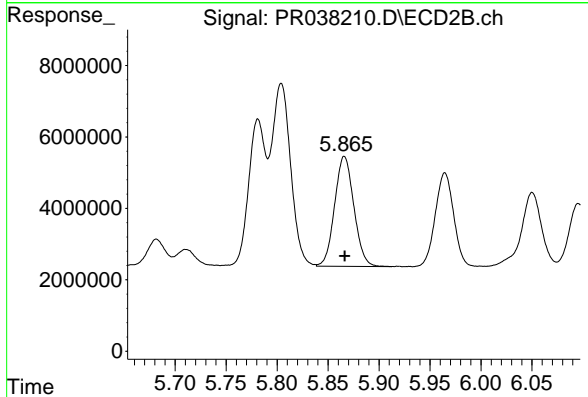
R.T.: 5.804 min
 Delta R.T.: 0.000 min
 Response: 66385767
 Conc: 250.53 ng/ml



#5 AR-1016-3

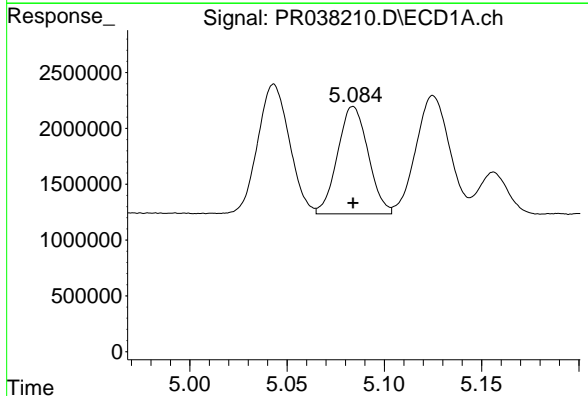
R.T.: 5.043 min
Delta R.T.: 0.000 min
Response: 13141211
Conc: 253.54 ng/ml

Instrument :
ECD_R
ClientSampleId :
AR1660ICC250



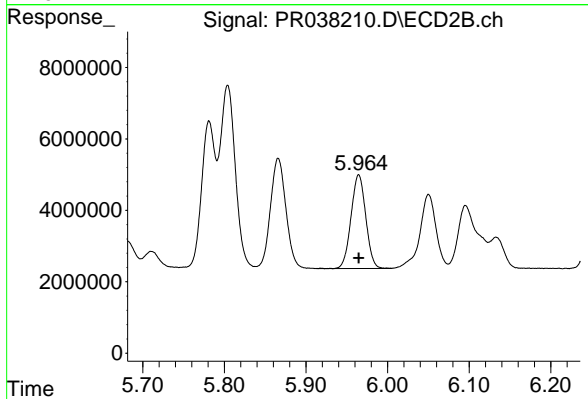
#5 AR-1016-3

R.T.: 5.866 min
Delta R.T.: 0.000 min
Response: 40523940
Conc: 254.84 ng/ml



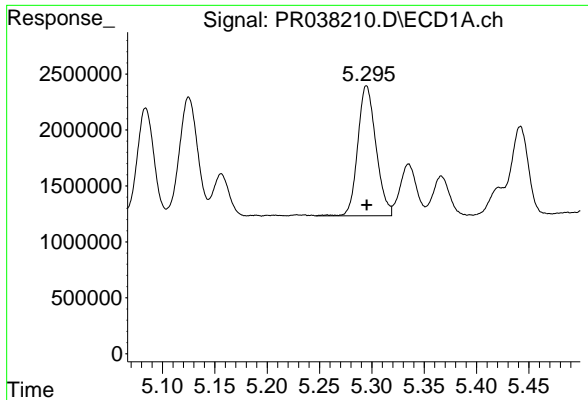
#6 AR-1016-4

R.T.: 5.084 min
Delta R.T.: 0.000 min
Response: 10543720
Conc: 258.31 ng/ml



#6 AR-1016-4

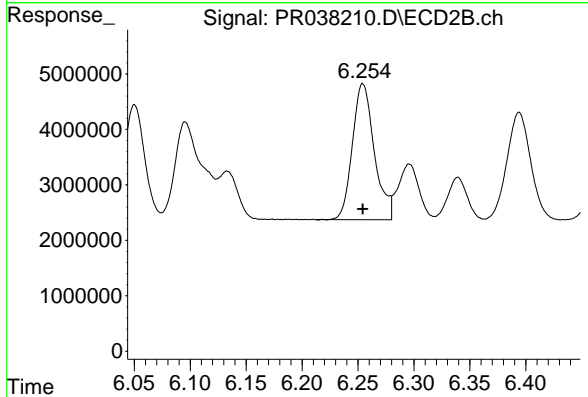
R.T.: 5.965 min
Delta R.T.: 0.000 min
Response: 32946835
Conc: 253.46 ng/ml



#7 AR-1016-5

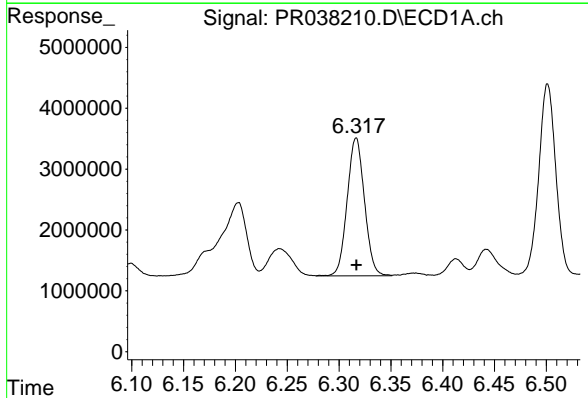
R.T.: 5.295 min
 Delta R.T.: 0.000 min
 Response: 14071416
 Conc: 258.56 ng/ml

Instrument :
 ECD_R
 ClientSampleId :
 AR1660ICC250



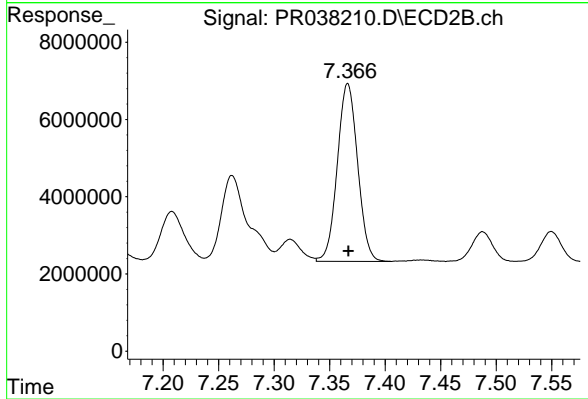
#7 AR-1016-5

R.T.: 6.254 min
 Delta R.T.: 0.000 min
 Response: 33447336
 Conc: 254.21 ng/ml



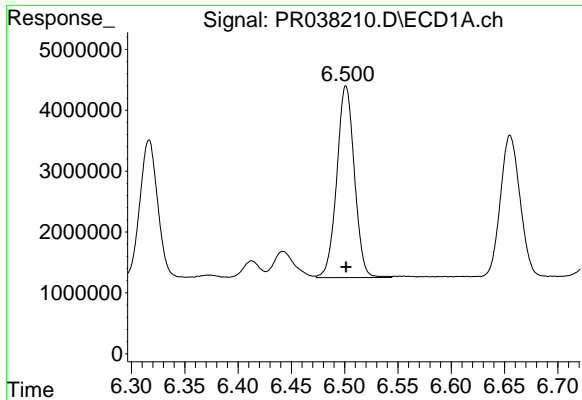
#31 AR-1260-1

R.T.: 6.317 min
 Delta R.T.: 0.000 min
 Response: 26299760
 Conc: 258.68 ng/ml



#31 AR-1260-1

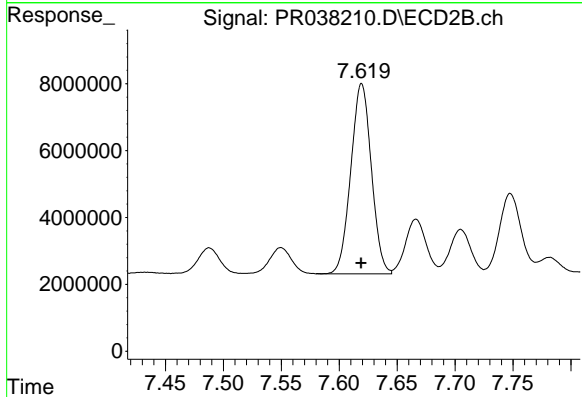
R.T.: 7.366 min
 Delta R.T.: 0.000 min
 Response: 58639951
 Conc: 253.00 ng/ml



#32 AR-1260-2

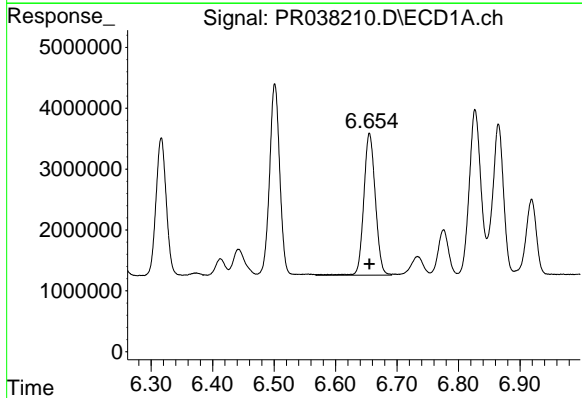
R.T.: 6.501 min
 Delta R.T.: 0.000 min
 Response: 36209054
 Conc: 260.55 ng/ml

Instrument :
 ECD_R
ClientSampleId :
 AR1660ICC250



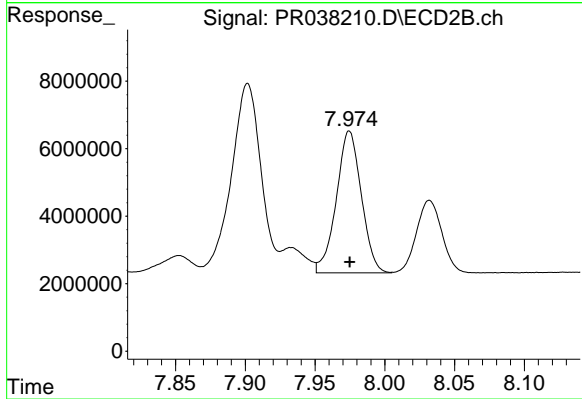
#32 AR-1260-2

R.T.: 7.619 min
 Delta R.T.: 0.000 min
 Response: 70245174
 Conc: 252.69 ng/ml



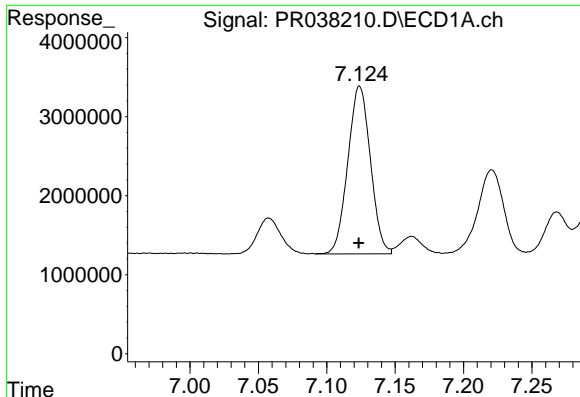
#33 AR-1260-3

R.T.: 6.655 min
 Delta R.T.: 0.000 min
 Response: 30441591
 Conc: 258.96 ng/ml



#33 AR-1260-3

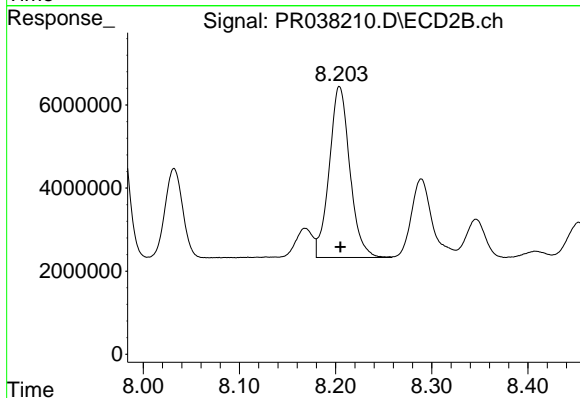
R.T.: 7.975 min
 Delta R.T.: 0.000 min
 Response: 52422492
 Conc: 253.37 ng/ml



#34 AR-1260-4

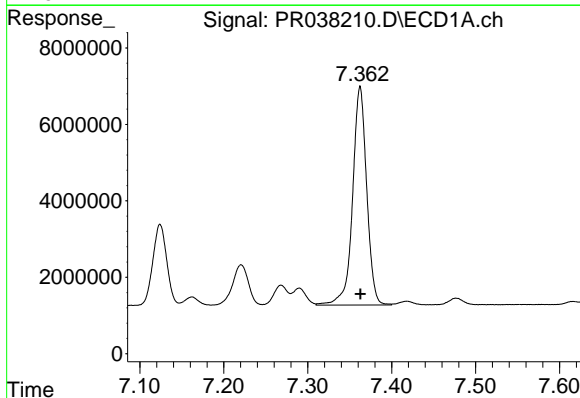
R.T.: 7.124 min
Delta R.T.: 0.000 min
Response: 24379996
Conc: 256.88 ng/ml

Instrument :
ECD_R
ClientSampled :
AR1660ICC250



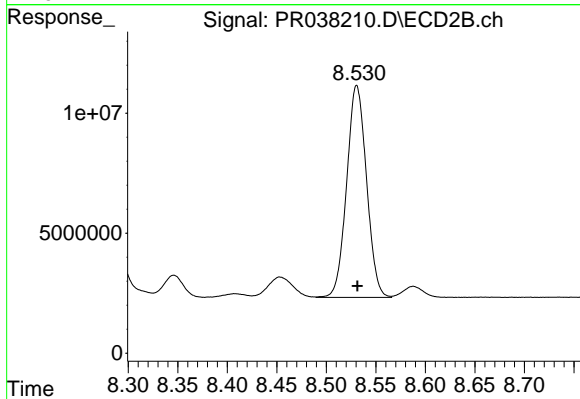
#34 AR-1260-4

R.T.: 8.204 min
Delta R.T.: 0.000 min
Response: 61136575
Conc: 253.13 ng/ml



#35 AR-1260-5

R.T.: 7.362 min
Delta R.T.: 0.000 min
Response: 66954737
Conc: 250.44 ng/ml



#35 AR-1260-5

R.T.: 8.531 min
Delta R.T.: 0.000 min
Response: 123231615
Conc: 245.91 ng/ml