

Data Path : Z:\pestpcbsrv\HPCHEM1\ECD_R\Data\PR052319\
 Data File : PR038218.D
 Signal(s) : Signal #1: ECD1A.ch Signal #2: ECD2B.ch
 Acq On : 23 May 2019 12:52
 Operator : SM\MA
 Sample : AR1268ICC500
 Misc :
 ALS Vial : 92 Sample Multiplier: 1

Instrument :
 ECD_R
 ClientSampleId :
 AR1268ICC500

Integration File signal 1: autoint1.e
 Integration File signal 2: autoint2.e
 Quant Time: May 23 13:08:37 2019
 Quant Method : Z:\pestpcbsrv\HPCHEM1\ECD_R\Method\PR052319.M
 Quant Title : GC EXTRACTABLES
 QLast Update : Thu May 23 13:08:26 2019
 Response via : Initial Calibration
 Integrator: ChemStation

Volume Inj. : 2 µl
 Signal #1 Phase : ZB-MR1 Signal #2 Phase: ZB-MR2
 Signal #1 Info : 30Mx0.32mmx 0.50µ Signal #2 Info : 30M x 0.32mm x 0.25µm

Compound	RT#1	RT#2	Resp#1	Resp#2	ng/ml	ng/ml

System Monitoring Compounds						
1) SA Tetrachlo...	3.778	4.626	76443737	229.2E6	46.105	45.753
2) SA Decachlor...	8.759	10.381	266.2E6	558.7E6	101.503	96.438
Target Compounds						
41) L9 AR-1268-1	7.646	8.849	288.7E6	497.2E6	500.000	500.000
42) L9 AR-1268-2	7.711	8.947	254.0E6	455.0E6	500.000	500.000
43) L9 AR-1268-3	7.917	9.180	211.2E6	373.2E6	500.000	500.000
44) L9 AR-1268-4	8.206	9.616	88775647	171.7E6	500.000	500.000
45) L9 AR-1268-5	8.501	10.038	668.6E6	1308.6E6	500.000	500.000

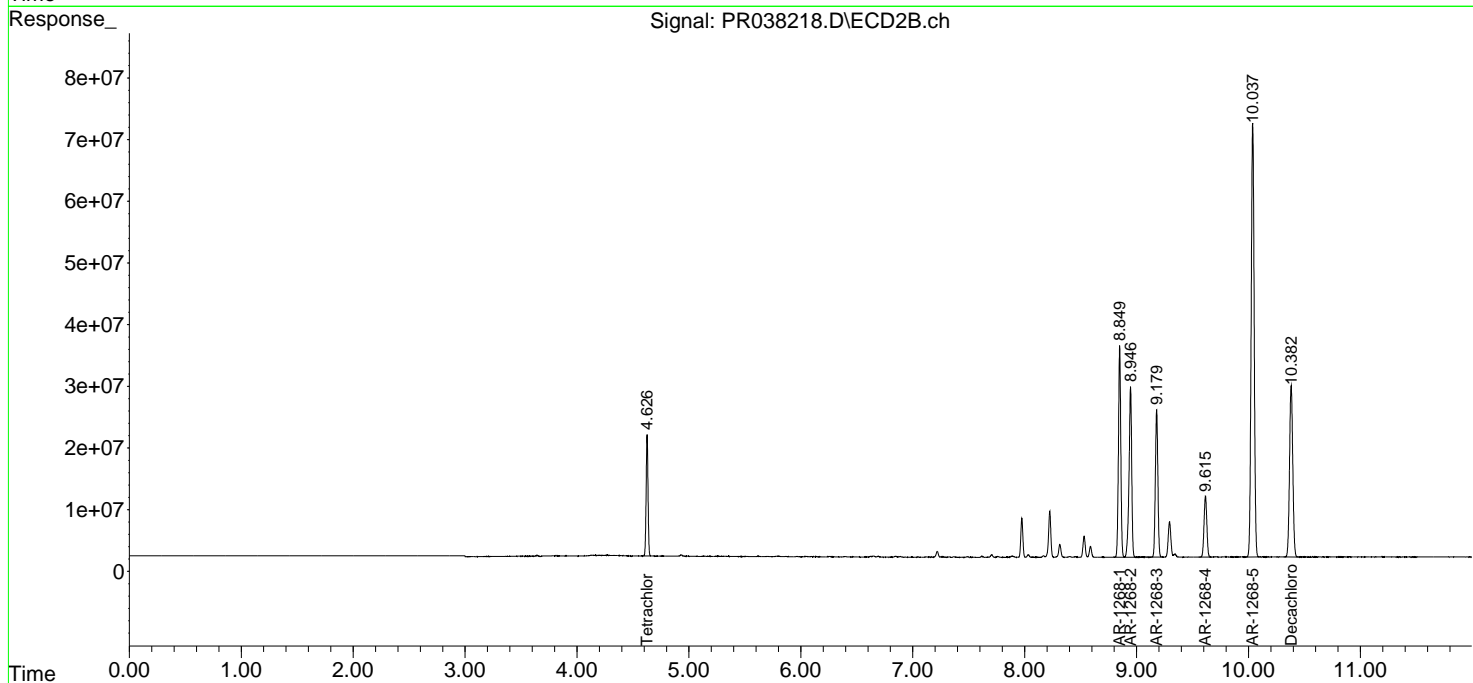
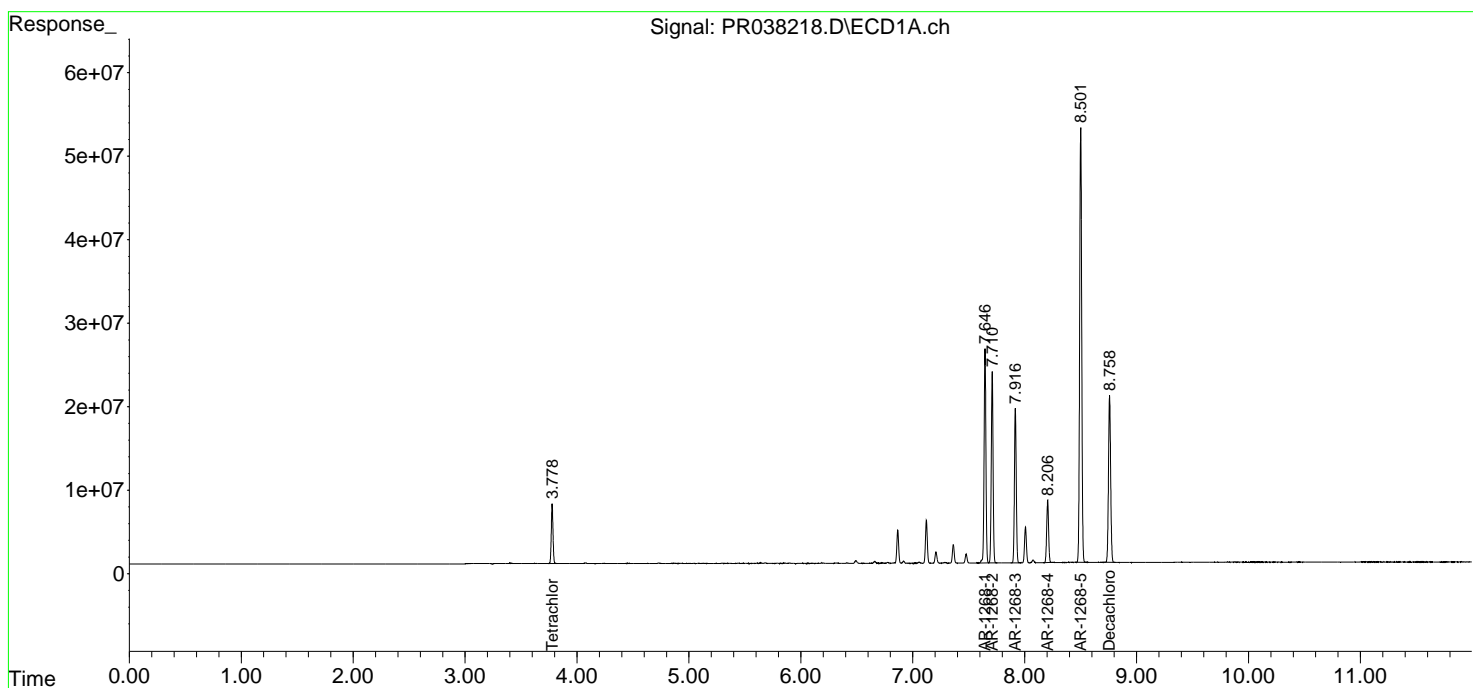
(f)=RT Delta > 1/2 Window (#)=Amounts differ by > 25% (m)=manual int.

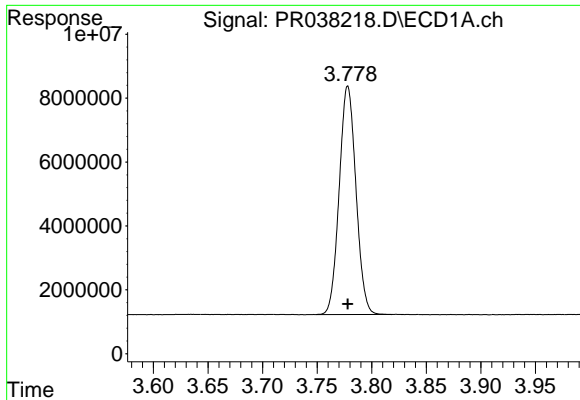
Data Path : Z:\pestpcbsrv\HPCHEM1\ECD_R\Data\PR052319\
 Data File : PR038218.D
 Signal(s) : Signal #1: ECD1A.ch Signal #2: ECD2B.ch
 Acq On : 23 May 2019 12:52
 Operator : SM\MA
 Sample : AR1268ICC500
 Misc :
 ALS Vial : 92 Sample Multiplier: 1

Instrument :
 ECD_R
 ClientSampleId :
 AR1268ICC500

Integration File signal 1: autoint1.e
 Integration File signal 2: autoint2.e
 Quant Time: May 23 13:08:37 2019
 Quant Method : Z:\pestpcbsrv\HPCHEM1\ECD_R\Method\PR052319.M
 Quant Title : GC EXTRACTABLES
 QLast Update : Thu May 23 13:08:26 2019
 Response via : Initial Calibration
 Integrator: ChemStation

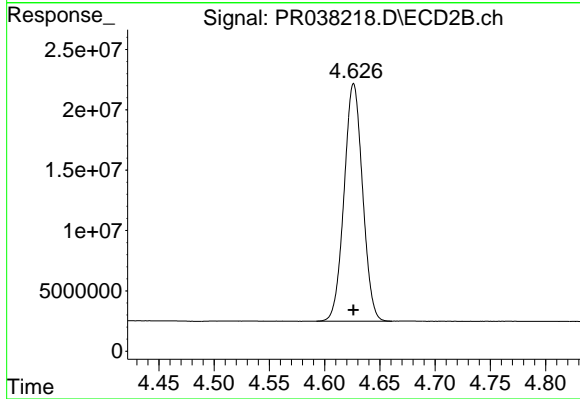
Volume Inj. : 2 µl
 Signal #1 Phase : ZB-MR1 Signal #2 Phase: ZB-MR2
 Signal #1 Info : 30Mx0.32mmx 0.50µ Signal #2 Info : 30M x 0.32mm x 0.25µm



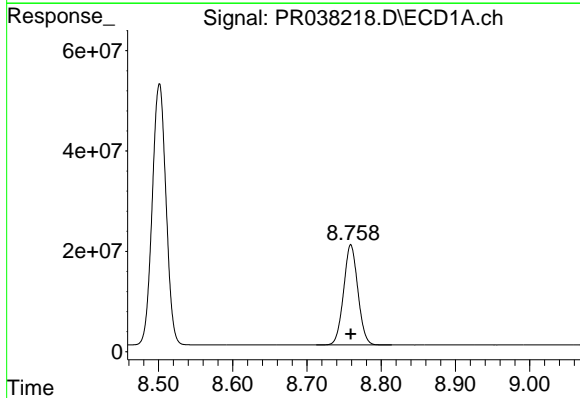


#1 Tetrachloro-m-xylene
 R.T.: 3.778 min
 Delta R.T.: 0.000 min
 Response: 76443737
 Conc: 46.11 ng/ml

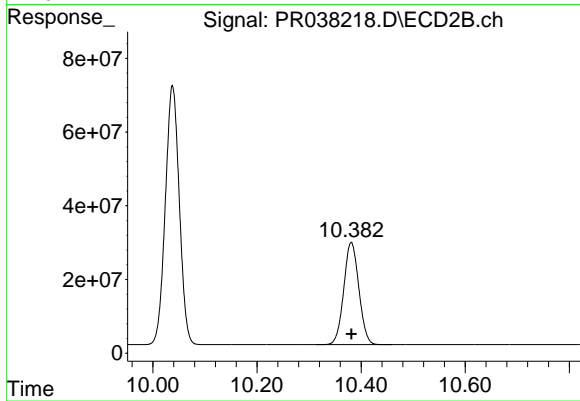
Instrument :
 ECD_R
 ClientSampleId :
 AR1268ICC500



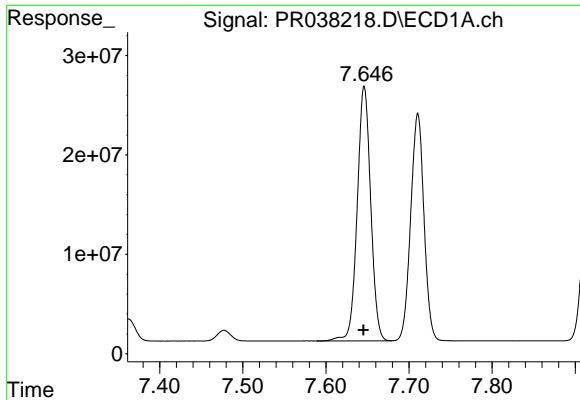
#1 Tetrachloro-m-xylene
 R.T.: 4.626 min
 Delta R.T.: 0.000 min
 Response: 229182458
 Conc: 45.75 ng/ml



#2 Decachlorobiphenyl
 R.T.: 8.759 min
 Delta R.T.: 0.000 min
 Response: 266165831
 Conc: 101.50 ng/ml



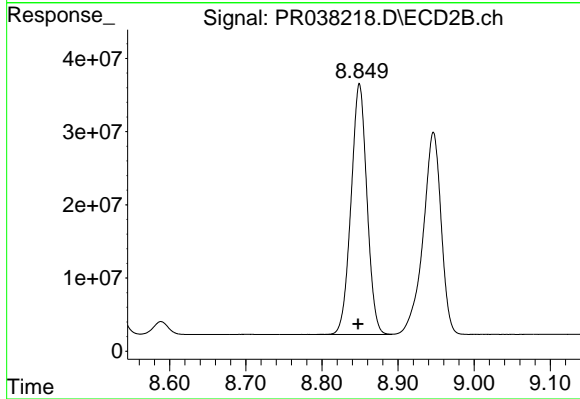
#2 Decachlorobiphenyl
 R.T.: 10.381 min
 Delta R.T.: 0.000 min
 Response: 558657124
 Conc: 96.44 ng/ml



#41 AR-1268-1

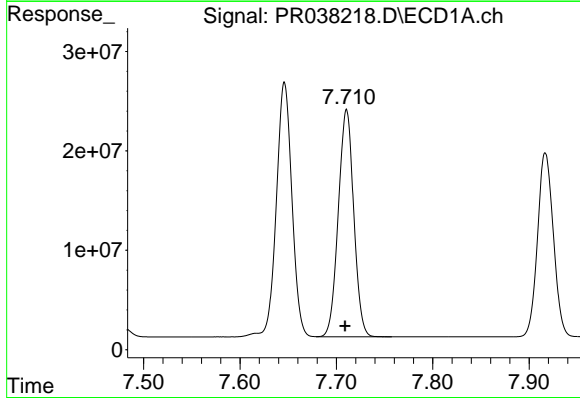
R.T.: 7.646 min
 Delta R.T.: 0.000 min
 Response: 288679387
 Conc: 500.00 ng/ml

Instrument :
 ECD_R
ClientSampleId :
 AR1268ICC500



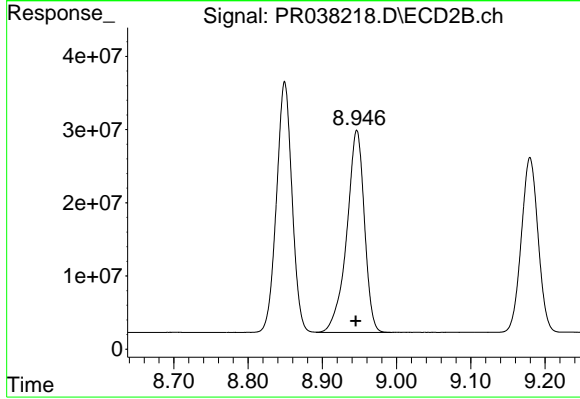
#41 AR-1268-1

R.T.: 8.849 min
 Delta R.T.: 0.002 min
 Response: 497162576
 Conc: 500.00 ng/ml



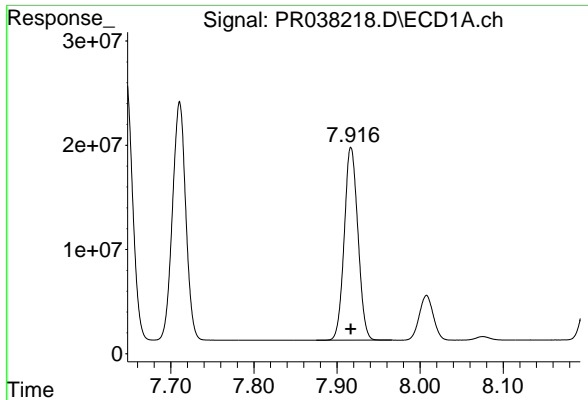
#42 AR-1268-2

R.T.: 7.711 min
 Delta R.T.: 0.002 min
 Response: 254013630
 Conc: 500.00 ng/ml



#42 AR-1268-2

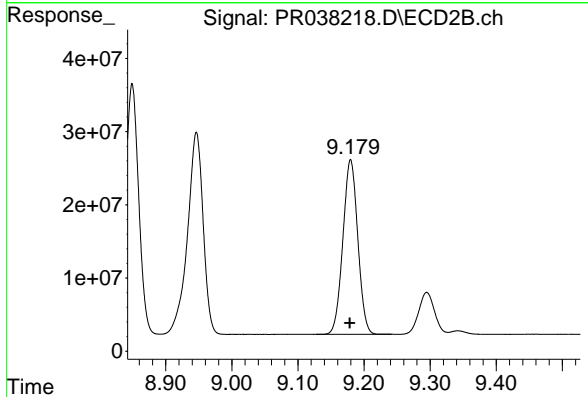
R.T.: 8.947 min
 Delta R.T.: 0.002 min
 Response: 455023495
 Conc: 500.00 ng/ml



#43 AR-1268-3

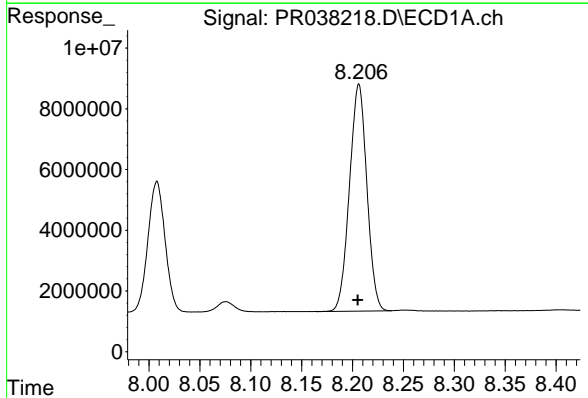
R.T.: 7.917 min
 Delta R.T.: 0.000 min
 Response: 211215543
 Conc: 500.00 ng/ml

Instrument :
 ECD_R
 ClientSampleId :
 AR1268ICC500



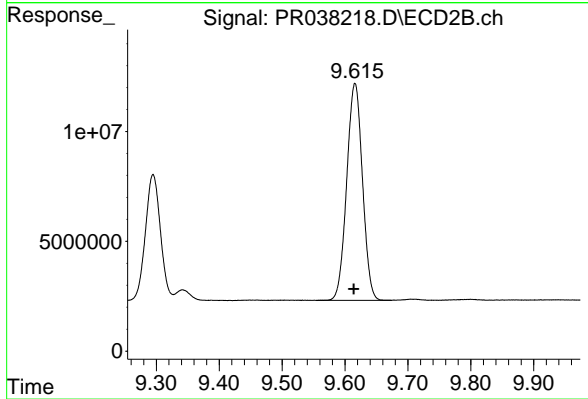
#43 AR-1268-3

R.T.: 9.180 min
 Delta R.T.: 0.001 min
 Response: 373246193
 Conc: 500.00 ng/ml



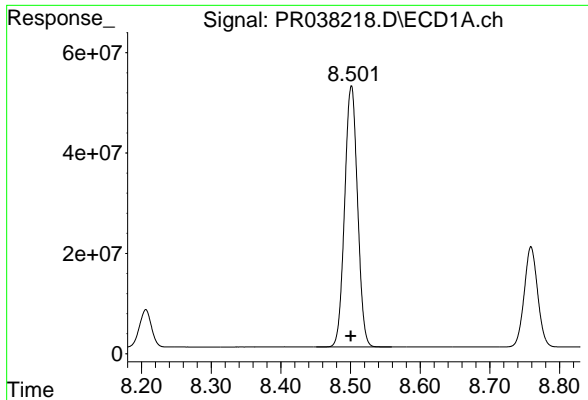
#44 AR-1268-4

R.T.: 8.206 min
 Delta R.T.: 0.001 min
 Response: 88775647
 Conc: 500.00 ng/ml



#44 AR-1268-4

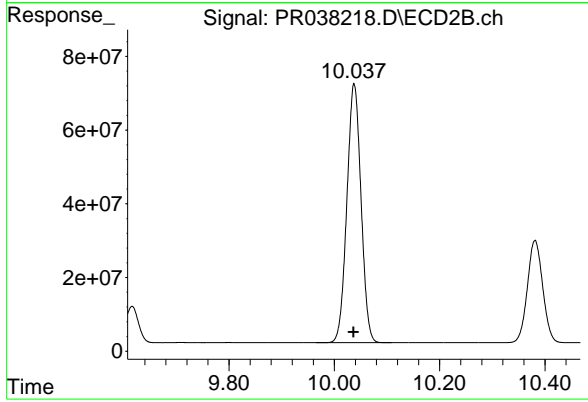
R.T.: 9.616 min
 Delta R.T.: 0.002 min
 Response: 171684009
 Conc: 500.00 ng/ml



#45 AR-1268-5

R.T.: 8.501 min
Delta R.T.: 0.000 min
Response: 668580519
Conc: 500.00 ng/ml

Instrument :
ECD_R
ClientSampleId :
AR1268ICC500



#45 AR-1268-5

R.T.: 10.038 min
Delta R.T.: 0.002 min
Response: 1308644669
Conc: 500.00 ng/ml