

Data Path : Z:\pestpcbsrv\HPCHEM1\ECD\_R\Data\PR052319\  
 Data File : PR038219.D  
 Signal(s) : Signal #1: ECD1A.ch Signal #2: ECD2B.ch  
 Acq On : 23 May 2019 13:24  
 Operator : SM\MA  
 Sample : PR052319ICV500  
 Misc :  
 ALS Vial : 93 Sample Multiplier: 1

Instrument :  
 ECD\_R  
 ClientSampleId :  
 ICVPR052319

Integration File signal 1: autoint1.e  
 Integration File signal 2: autoint2.e  
 Quant Time: May 23 14:44:48 2019  
 Quant Method : Z:\pestpcbsrv\HPCHEM1\ECD\_R\Method\PR052319.M  
 Quant Title : GC EXTRACTABLES  
 QLast Update : Thu May 23 13:10:55 2019  
 Response via : Initial Calibration  
 Integrator: ChemStation

Volume Inj. : 2 µl  
 Signal #1 Phase : ZB-MR2 Signal #2 Phase: ZB-MR2  
 Signal #1 Info : 30Mx0.32mmx 0.50µ Signal #2 Info : 30M x 0.32mm x 0.25µm

Compound	RT#1	RT#2	Resp#1	Resp#2	ng/ml	ng/ml
-----						
System Monitoring Compounds						
1) SA Tetrachlo...	3.781	4.626	79318232	241.8E6	47.300	47.652
2) SA Decachlor...	8.770	10.386	89875518	203.3E6	46.331	46.085
Target Compounds						
3) L1 AR-1016-1	4.856	5.783	34306624	90426084	468.199	479.963
4) L1 AR-1016-2	4.874	5.805	47867725	129.1E6	481.928	475.381
5) L1 AR-1016-3	5.049	5.867	25570063	78229459	482.325	476.403
6) L1 AR-1016-4	5.089	5.966	20043144	65228169	475.887	490.683
7) L1 AR-1016-5	5.301	6.256	26701962	64760563	475.707	479.118
31) L7 AR-1260-1	6.325	7.369	50848697	112.7E6	474.777	472.687
32) L7 AR-1260-2	6.509	7.621	70605571	134.8E6	479.088	471.424
33) L7 AR-1260-3	6.664	7.977	58266421	99358417	478.411	466.788
34) L7 AR-1260-4	7.133	8.207	47911620	114.8E6	486.920	464.018
35) L7 AR-1260-5	7.372	8.534	130.2E6	234.9E6	477.792	458.069

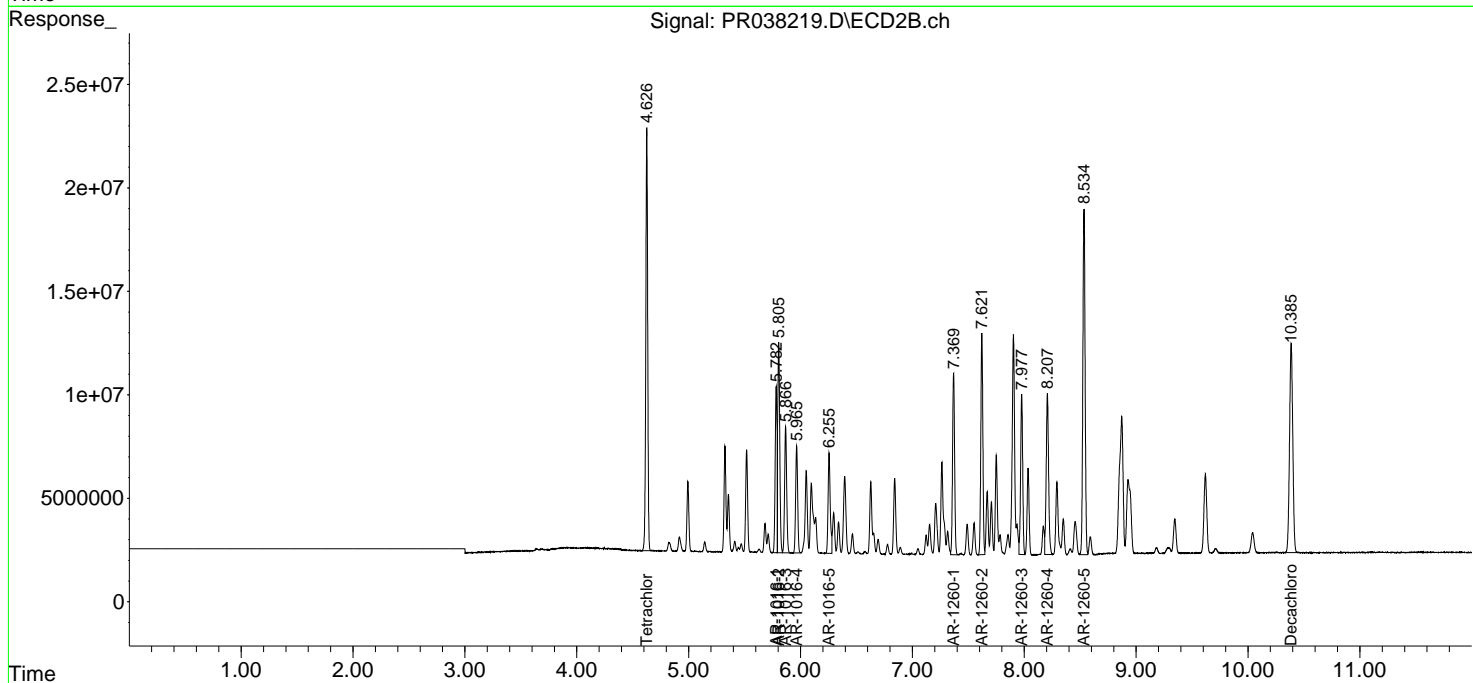
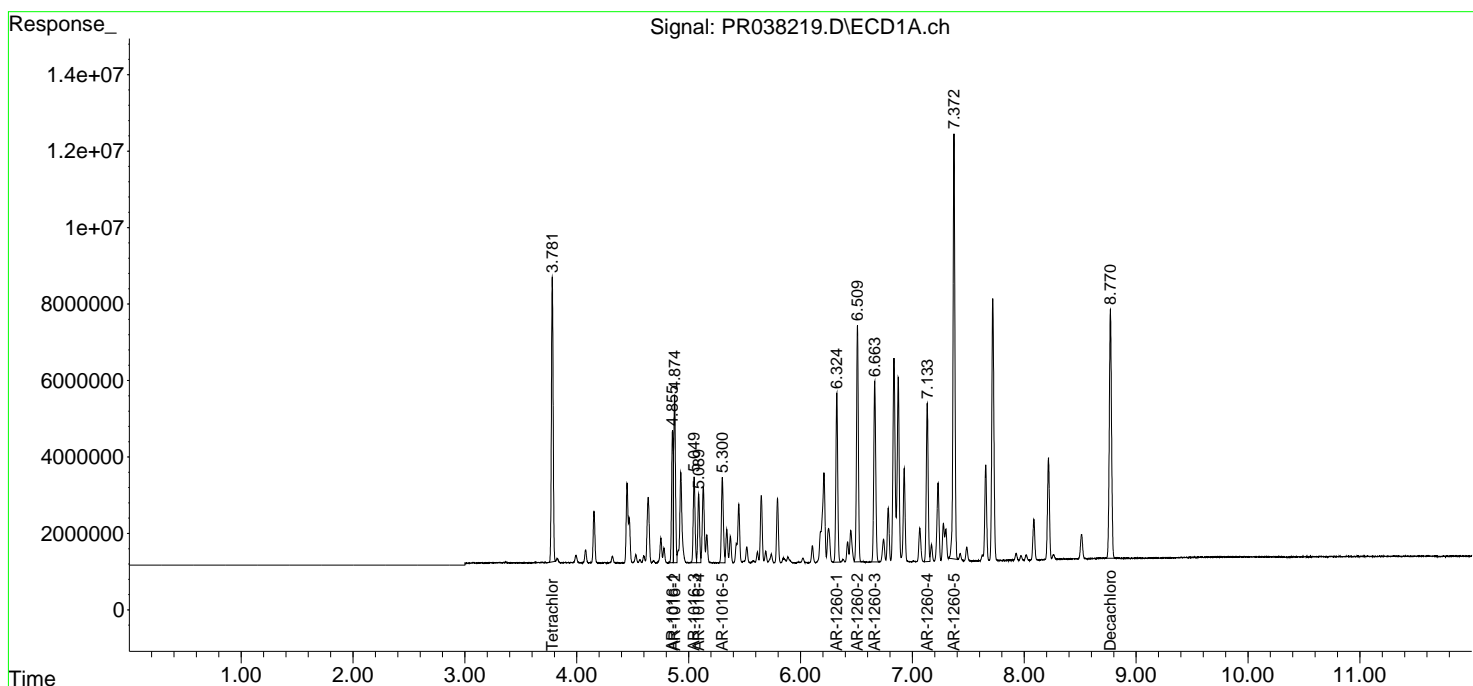
(f)=RT Delta > 1/2 Window (#)=Amounts differ by > 25% (m)=manual int.

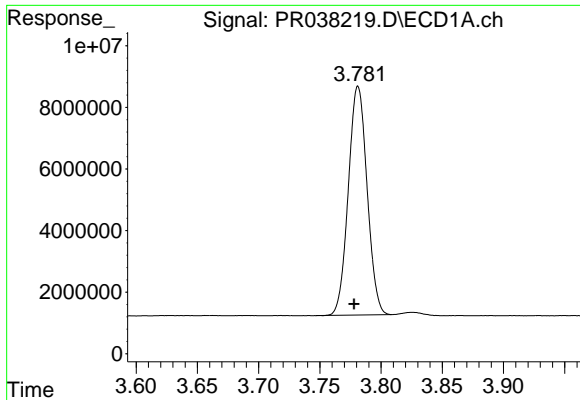
Data Path : Z:\pestpcbsrv\HPCHEM1\ECD\_R\Data\PR052319\  
 Data File : PR038219.D  
 Signal(s) : Signal #1: ECD1A.ch Signal #2: ECD2B.ch  
 Acq On : 23 May 2019 13:24  
 Operator : SM\MA  
 Sample : PR052319ICV500  
 Misc :  
 ALS Vial : 93 Sample Multiplier: 1

Instrument :  
 ECD\_R  
 Client Sampled :  
 ICVPR052319

Integration File signal 1: autoint1.e  
 Integration File signal 2: autoint2.e  
 Quant Time: May 23 14:44:48 2019  
 Quant Method : Z:\pestpcbsrv\HPCHEM1\ECD\_R\Method\PR052319.M  
 Quant Title : GC EXTRACTABLES  
 QLast Update : Thu May 23 13:10:55 2019  
 Response via : Initial Calibration  
 Integrator: ChemStation

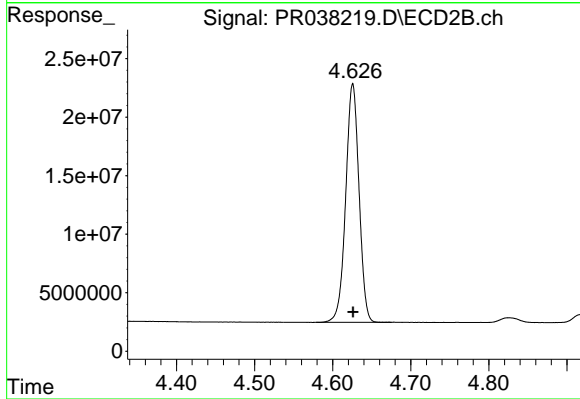
Volume Inj. : 2 µl  
 Signal #1 Phase : ZB-MR1 Signal #2 Phase: ZB-MR2  
 Signal #1 Info : 30Mx0.32mmx 0.50µ Signal #2 Info : 30M x 0.32mm x 0.25µm



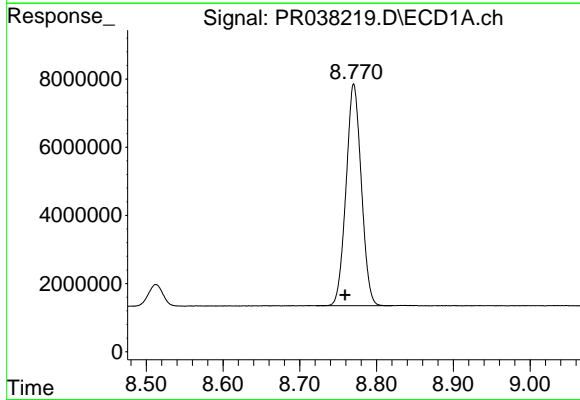


#1 Tetrachloro-m-xylene  
R.T.: 3.781 min  
Delta R.T.: 0.003 min  
Response: 79318232  
Conc: 47.30 ng/ml

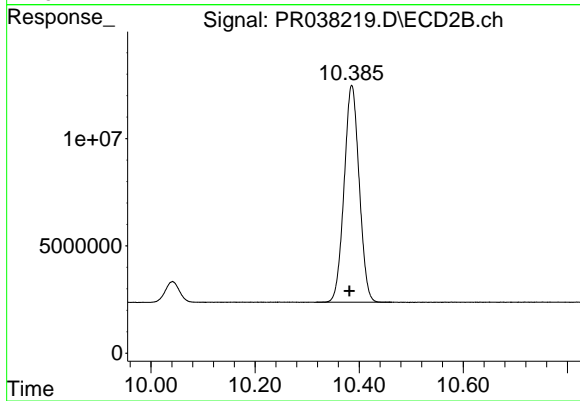
Instrument :  
ECD\_R  
ClientSampleId :  
ICVPR052319



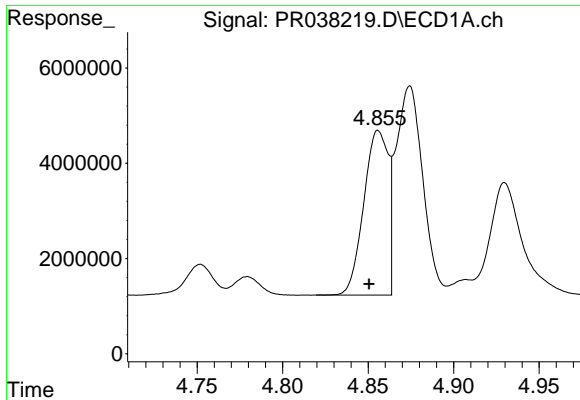
#1 Tetrachloro-m-xylene  
R.T.: 4.626 min  
Delta R.T.: 0.000 min  
Response: 241762518  
Conc: 47.65 ng/ml



#2 Decachlorobiphenyl  
R.T.: 8.770 min  
Delta R.T.: 0.011 min  
Response: 89875518  
Conc: 46.33 ng/ml



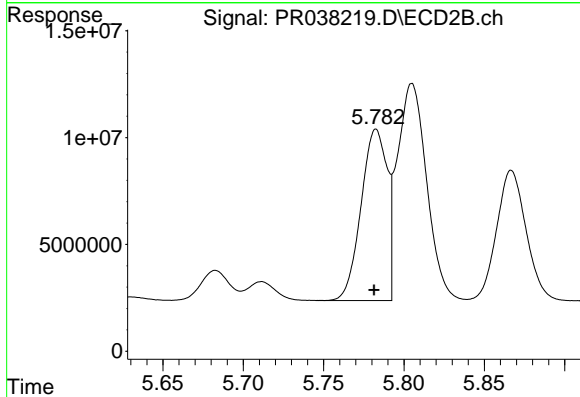
#2 Decachlorobiphenyl  
R.T.: 10.386 min  
Delta R.T.: 0.005 min  
Response: 203282675  
Conc: 46.09 ng/ml



#3 AR-1016-1

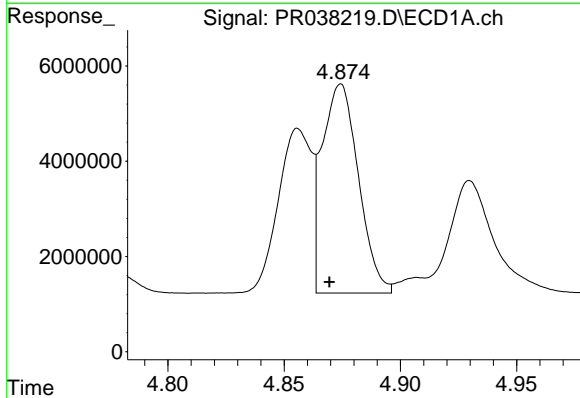
R.T.: 4.856 min  
 Delta R.T.: 0.005 min  
 Response: 34306624  
 Conc: 468.20 ng/ml

**Instrument :**  
 ECD\_R  
**ClientSampleId :**  
 ICVPR052319



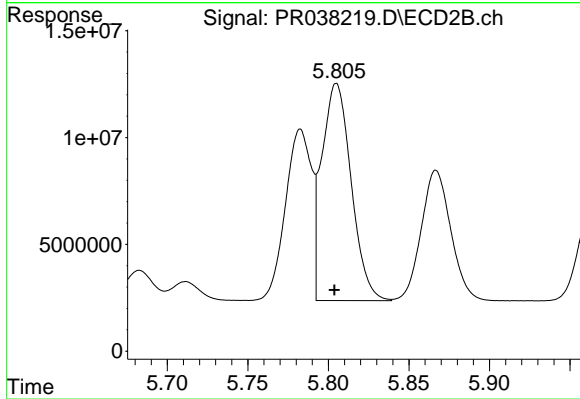
#3 AR-1016-1

R.T.: 5.783 min  
 Delta R.T.: 0.001 min  
 Response: 90426084  
 Conc: 479.96 ng/ml



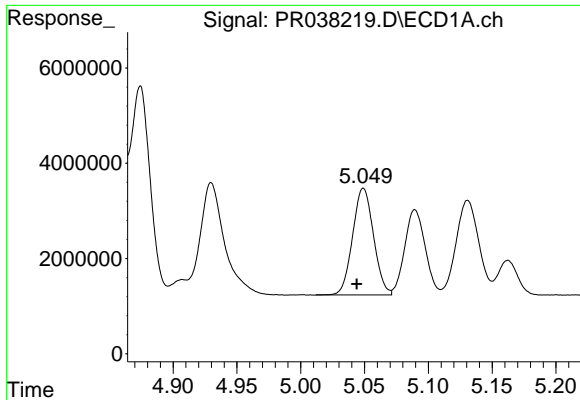
#4 AR-1016-2

R.T.: 4.874 min  
 Delta R.T.: 0.005 min  
 Response: 47867725  
 Conc: 481.93 ng/ml



#4 AR-1016-2

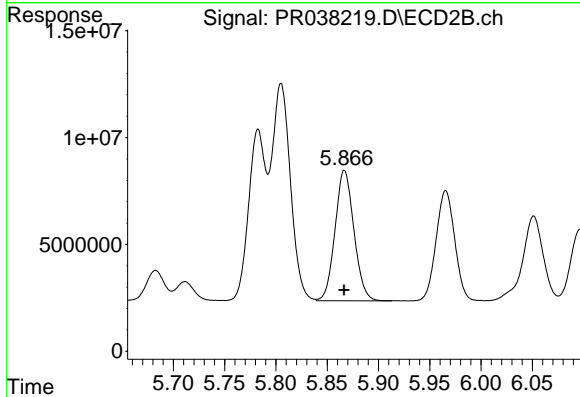
R.T.: 5.805 min  
 Delta R.T.: 0.001 min  
 Response: 129111601  
 Conc: 475.38 ng/ml



#5 AR-1016-3

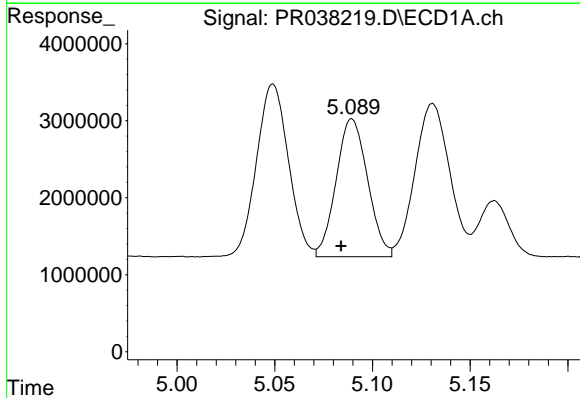
R.T.: 5.049 min  
 Delta R.T.: 0.005 min  
 Response: 25570063  
 Conc: 482.32 ng/ml

Instrument :  
 ECD\_R  
 ClientSampleId :  
 ICVPR052319



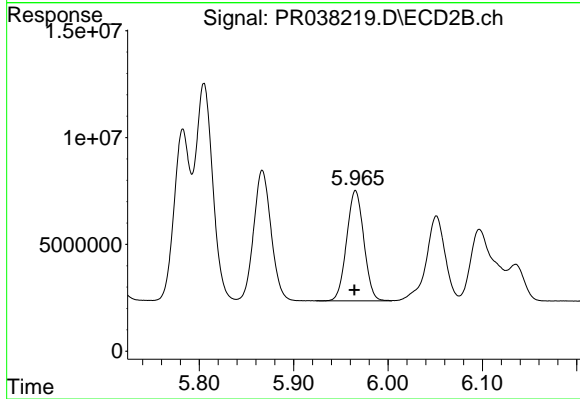
#5 AR-1016-3

R.T.: 5.867 min  
 Delta R.T.: 0.000 min  
 Response: 78229459  
 Conc: 476.40 ng/ml



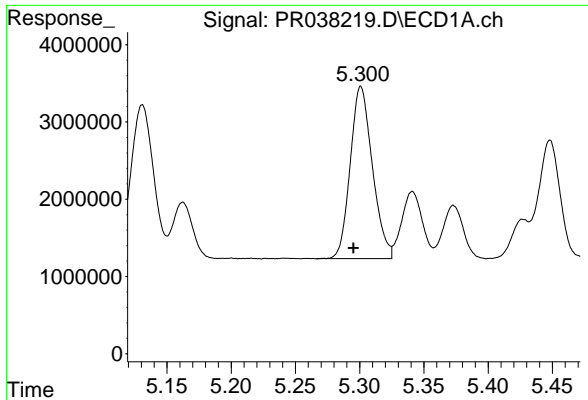
#6 AR-1016-4

R.T.: 5.089 min  
 Delta R.T.: 0.006 min  
 Response: 20043144  
 Conc: 475.89 ng/ml



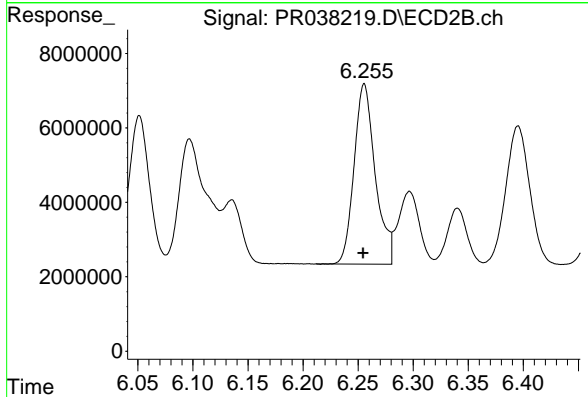
#6 AR-1016-4

R.T.: 5.966 min  
 Delta R.T.: 0.001 min  
 Response: 65228169  
 Conc: 490.68 ng/ml

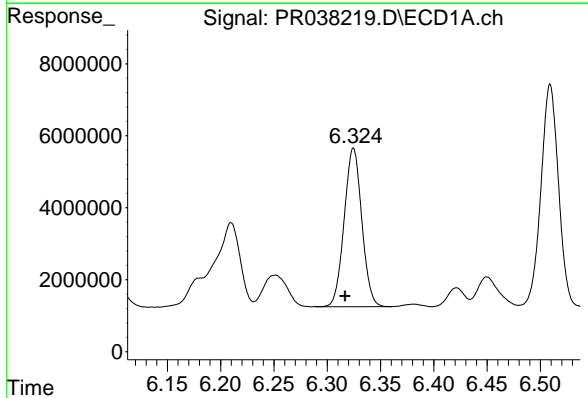


#7 AR-1016-5  
R.T.: 5.301 min  
Delta R.T.: 0.006 min  
Response: 26701962  
Conc: 475.71 ng/ml

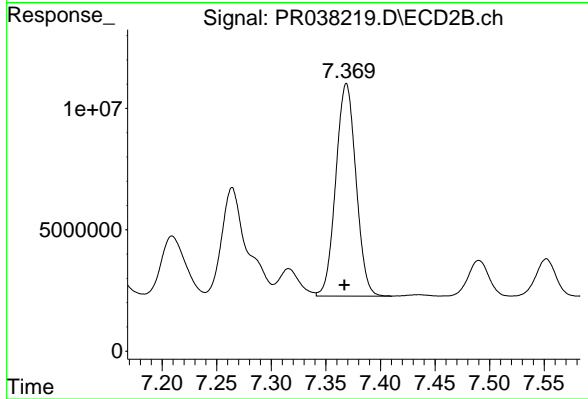
Instrument :  
ECD\_R  
ClientSampleId :  
ICVPR052319



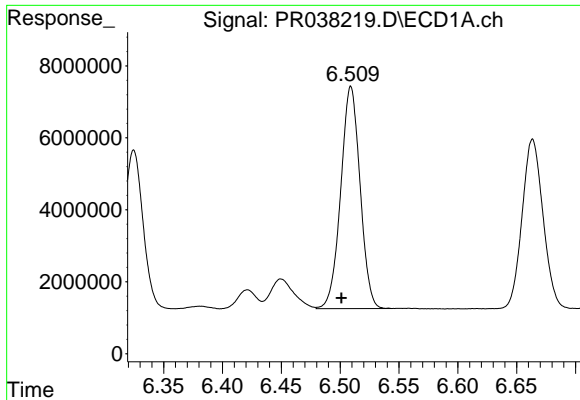
#7 AR-1016-5  
R.T.: 6.256 min  
Delta R.T.: 0.001 min  
Response: 64760563  
Conc: 479.12 ng/ml



#31 AR-1260-1  
R.T.: 6.325 min  
Delta R.T.: 0.008 min  
Response: 50848697  
Conc: 474.78 ng/ml



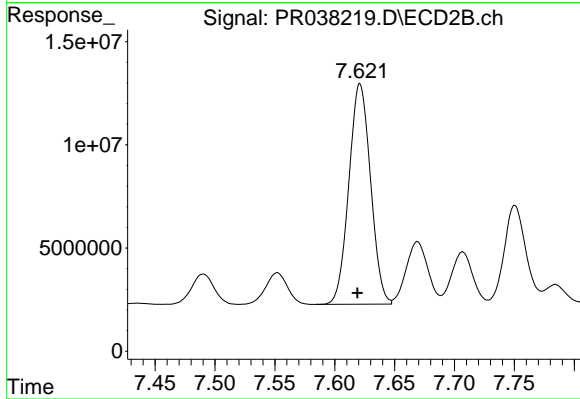
#31 AR-1260-1  
R.T.: 7.369 min  
Delta R.T.: 0.002 min  
Response: 112738792  
Conc: 472.69 ng/ml



#32 AR-1260-2

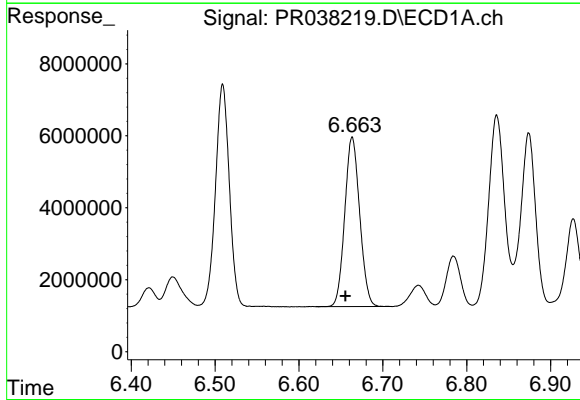
R.T.: 6.509 min  
 Delta R.T.: 0.008 min  
 Response: 70605571  
 Conc: 479.09 ng/ml

Instrument :  
 ECD\_R  
 ClientSampleId :  
 ICVPR052319



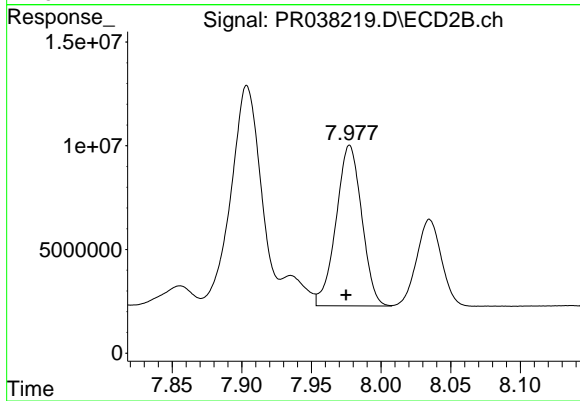
#32 AR-1260-2

R.T.: 7.621 min  
 Delta R.T.: 0.002 min  
 Response: 134849421  
 Conc: 471.42 ng/ml



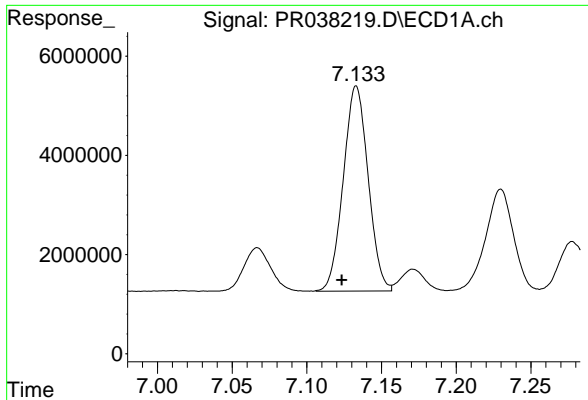
#33 AR-1260-3

R.T.: 6.664 min  
 Delta R.T.: 0.008 min  
 Response: 58266421  
 Conc: 478.41 ng/ml



#33 AR-1260-3

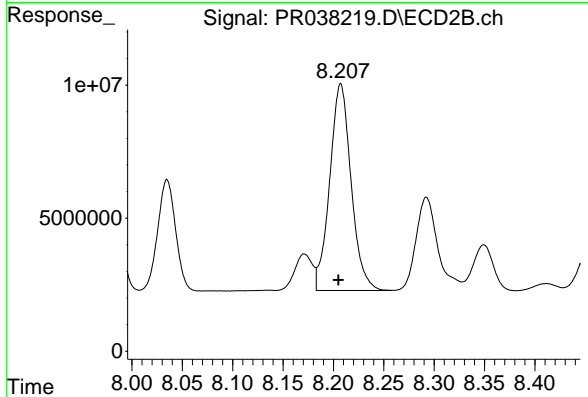
R.T.: 7.977 min  
 Delta R.T.: 0.003 min  
 Response: 99358417  
 Conc: 466.79 ng/ml



#34 AR-1260-4

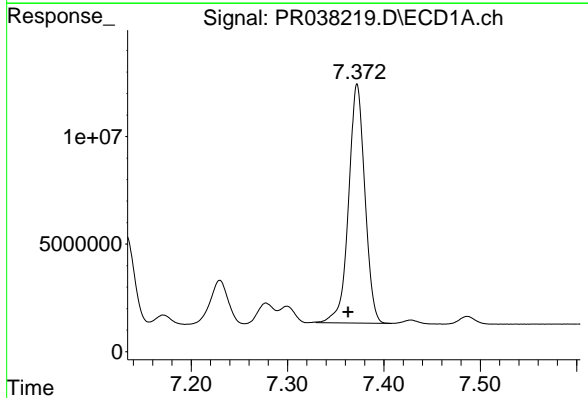
R.T.: 7.133 min  
Delta R.T.: 0.010 min  
Response: 47911620  
Conc: 486.92 ng/ml

Instrument :  
ECD\_R  
ClientSampleId :  
ICVPR052319



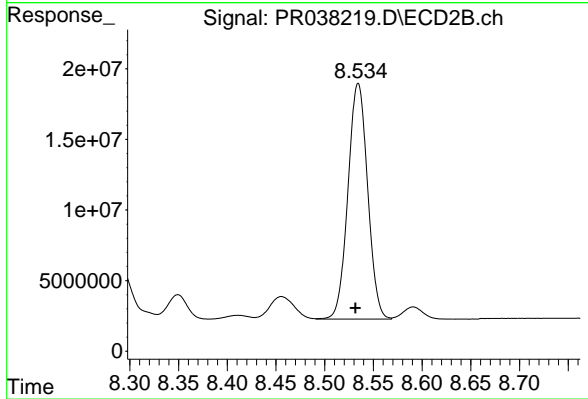
#34 AR-1260-4

R.T.: 8.207 min  
Delta R.T.: 0.002 min  
Response: 114820363  
Conc: 464.02 ng/ml



#35 AR-1260-5

R.T.: 7.372 min  
Delta R.T.: 0.009 min  
Response: 130171815  
Conc: 477.79 ng/ml



#35 AR-1260-5

R.T.: 8.534 min  
Delta R.T.: 0.003 min  
Response: 234895863  
Conc: 458.07 ng/ml