

Data Path : Z:\pestpcbsrv\HPCHEM1\ECD\_R\Data\PR052319\  
 Data File : PR038220.D  
 Signal(s) : Signal #1: ECD1A.ch Signal #2: ECD2B.ch  
 Acq On : 23 May 2019 13:39  
 Operator : SM\MA  
 Sample : I.BLK  
 Misc :  
 ALS Vial : 2 Sample Multiplier: 1

Instrument :  
 ECD\_R  
 ClientSampleId :  
 I.BLK

Integration File signal 1: autoint1.e  
 Integration File signal 2: autoint2.e  
 Quant Time: May 23 14:45:49 2019  
 Quant Method : Z:\pestpcbsrv\HPCHEM1\ECD\_R\Method\PR052319.M  
 Quant Title : GC EXTRACTABLES  
 QLast Update : Thu May 23 13:10:55 2019  
 Response via : Initial Calibration  
 Integrator: ChemStation

Volume Inj. : 2 µl  
 Signal #1 Phase : ZB-MR1 Signal #2 Phase: ZB-MR2  
 Signal #1 Info : 30Mx0.32mmx 0.50µ Signal #2 Info : 30M x 0.32mm x 0.25µm

Compound	RT#1	RT#2	Resp#1	Resp#2	ng/ml	ng/ml
-----						
System Monitoring Compounds						
1) SA Tetrachlo...	3.777	4.625	30424682	91558334	18.143	18.047
2) SA Decachlor...	8.760	10.381	36627390	81175025	18.881	18.403

Target Compounds

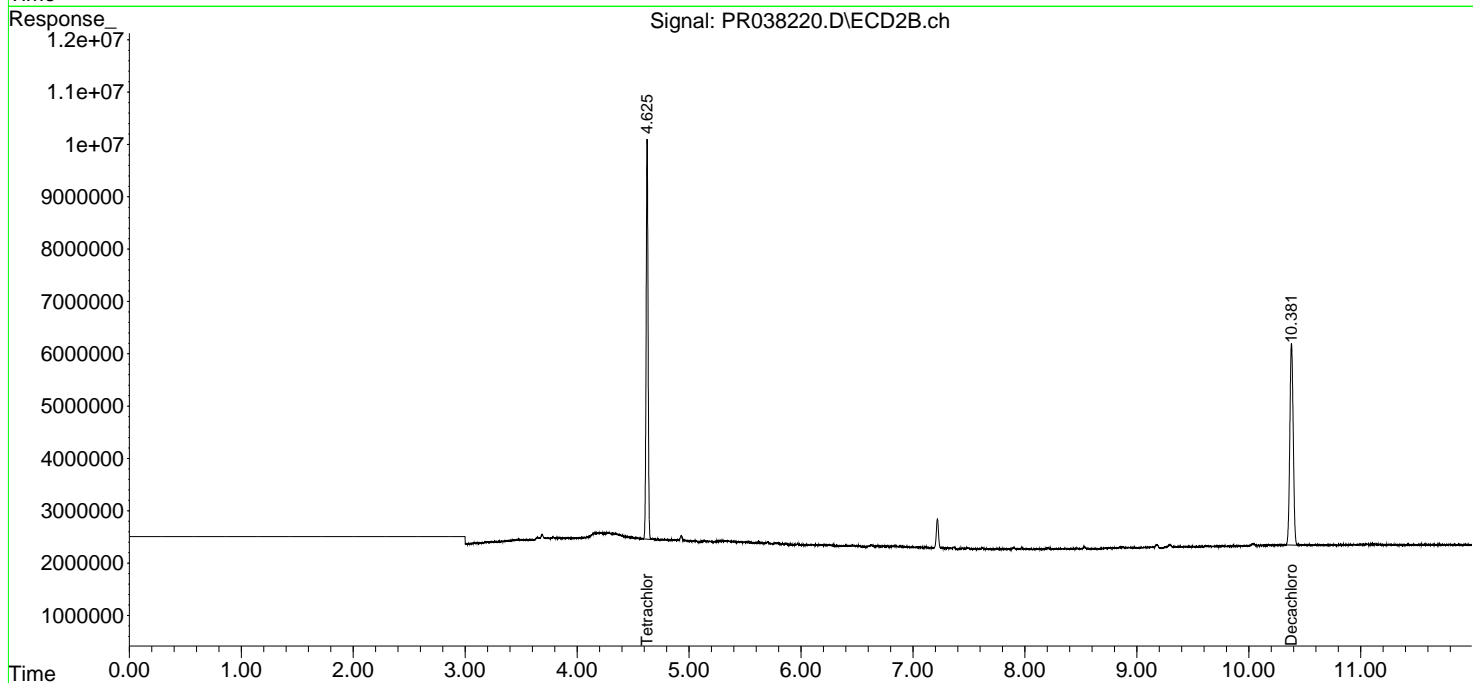
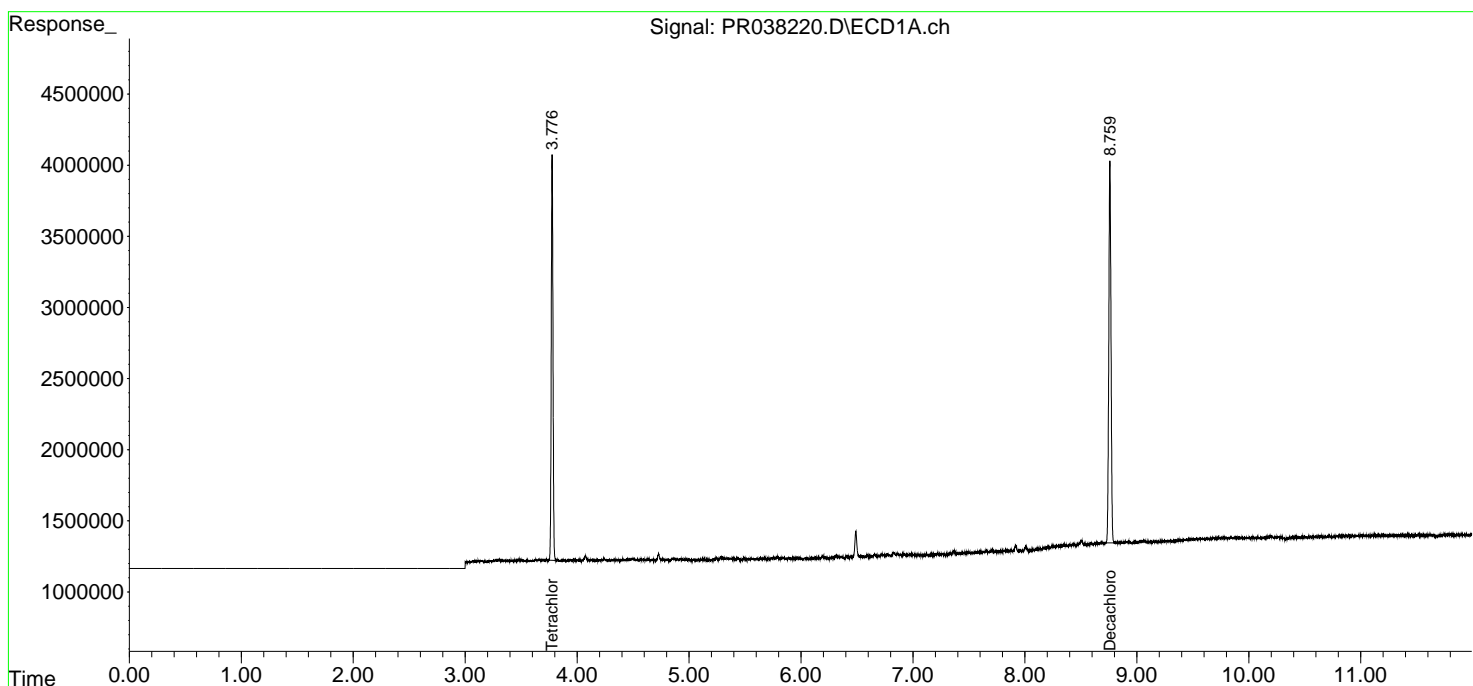
(f)=RT Delta > 1/2 Window (#)=Amounts differ by > 25% (m)=manual int.

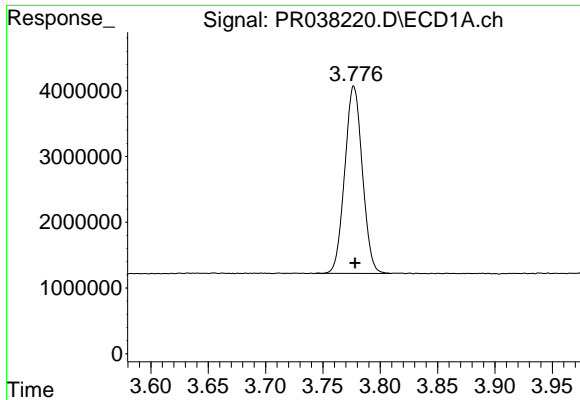
Data Path : Z:\pestpcbsrv\HPCHEM1\ECD\_R\Data\PR052319\  
 Data File : PR038220.D  
 Signal(s) : Signal #1: ECD1A.ch Signal #2: ECD2B.ch  
 Acq On : 23 May 2019 13:39  
 Operator : SM\MA  
 Sample : I.BLK  
 Misc :  
 ALS Vial : 2 Sample Multiplier: 1

Instrument :  
 ECD\_R  
 ClientSampled :  
 I.BLK

Integration File signal 1: autoint1.e  
 Integration File signal 2: autoint2.e  
 Quant Time: May 23 14:45:49 2019  
 Quant Method : Z:\pestpcbsrv\HPCHEM1\ECD\_R\Method\PR052319.M  
 Quant Title : GC EXTRACTABLES  
 QLast Update : Thu May 23 13:10:55 2019  
 Response via : Initial Calibration  
 Integrator: ChemStation

Volume Inj. : 2 µl  
 Signal #1 Phase : ZB-MR1 Signal #2 Phase: ZB-MR2  
 Signal #1 Info : 30Mx0.32mmx 0.50µ Signal #2 Info : 30M x 0.32mm x 0.25µm

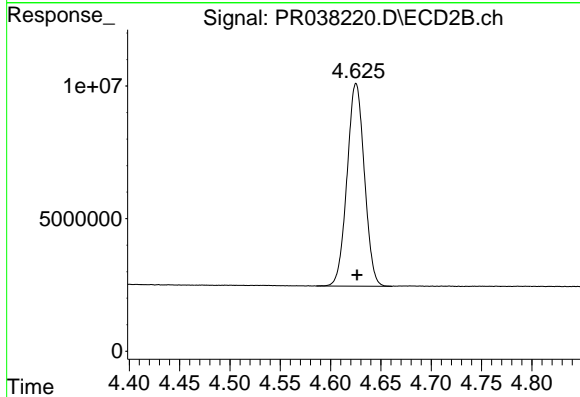




#1 Tetrachloro-m-xylene

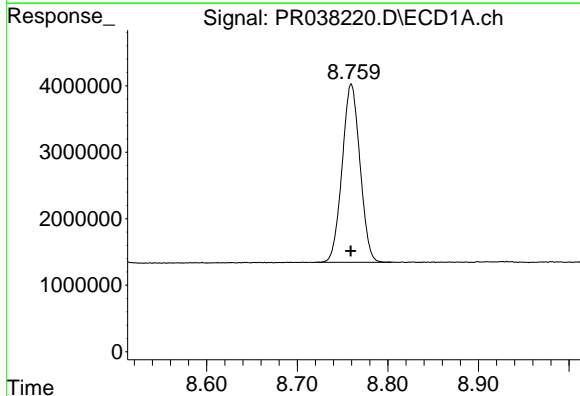
R.T.: 3.777 min  
 Delta R.T.: -0.001 min  
 Response: 30424682  
 Conc: 18.14 ng/ml

Instrument :  
 ECD\_R  
 ClientSampled :  
 I.BLK



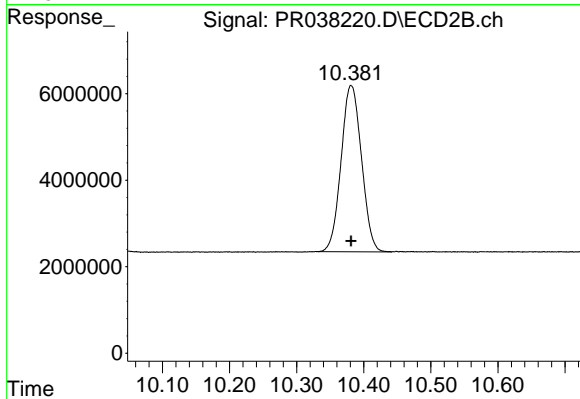
#1 Tetrachloro-m-xylene

R.T.: 4.625 min  
 Delta R.T.: 0.000 min  
 Response: 91558334  
 Conc: 18.05 ng/ml



#2 Decachlorobiphenyl

R.T.: 8.760 min  
 Delta R.T.: 0.000 min  
 Response: 36627390  
 Conc: 18.88 ng/ml



#2 Decachlorobiphenyl

R.T.: 10.381 min  
 Delta R.T.: 0.000 min  
 Response: 81175025  
 Conc: 18.40 ng/ml