

Data Path : Z:\pestpcbsrv\HPCHEM1\ECD_R\Data\PR052319\
 Data File : PR038221.D
 Signal(s) : Signal #1: ECD1A.ch Signal #2: ECD2B.ch
 Acq On : 23 May 2019 14:51
 Operator : SM\MA
 Sample : AR1660CCC500
 Misc :
 ALS Vial : 3 Sample Multiplier: 1

Instrument :
 ECD_R
 ClientSampleId :
 AR1660CCC500

Integration File signal 1: autoint1.e
 Integration File signal 2: autoint2.e
 Quant Time: May 23 15:04:42 2019
 Quant Method : Z:\pestpcbsrv\HPCHEM1\ECD_R\Method\PR052319.M
 Quant Title : GC EXTRACTABLES
 QLast Update : Thu May 23 13:10:55 2019
 Response via : Initial Calibration
 Integrator: ChemStation

Volume Inj. : 2 µl
 Signal #1 Phase : ZB-MR1 Signal #2 Phase: ZB-MR2
 Signal #1 Info : 30Mx0.32mmx 0.50µ Signal #2 Info : 30M x 0.32mm x 0.25µm

Compound	RT#1	RT#2	Resp#1	Resp#2	ng/ml	ng/ml

System Monitoring Compounds						
1) SA Tetrachlo...	3.777	4.625	80907309	237.8E6	48.248	46.864
2) SA Decachlor...	8.756	10.381	84950788	194.0E6	43.792	43.977
Target Compounds						
3) L1 AR-1016-1	4.850	5.781	36640018	91220513	500.044	484.180
4) L1 AR-1016-2	4.869	5.804	51267392	131.8E6	516.156	485.404
5) L1 AR-1016-3	5.043	5.866	27371722	78978580	516.309	480.965
6) L1 AR-1016-4	5.084	5.964	21599546	65121345	512.841	489.880
7) L1 AR-1016-5	5.294	6.254	28679067	65692432	510.930	486.012
31) L7 AR-1260-1	6.316	7.366	53307572	117.4E6	497.736	492.165
32) L7 AR-1260-2	6.501	7.619	74823330	142.6E6	507.707	498.594
33) L7 AR-1260-3	6.654	7.974	60276965	105.8E6	494.919	497.069
34) L7 AR-1260-4	7.122	8.204	48474735	123.3E6	492.643	498.435
35) L7 AR-1260-5	7.361	8.530	131.6E6	250.4E6	483.000	488.401

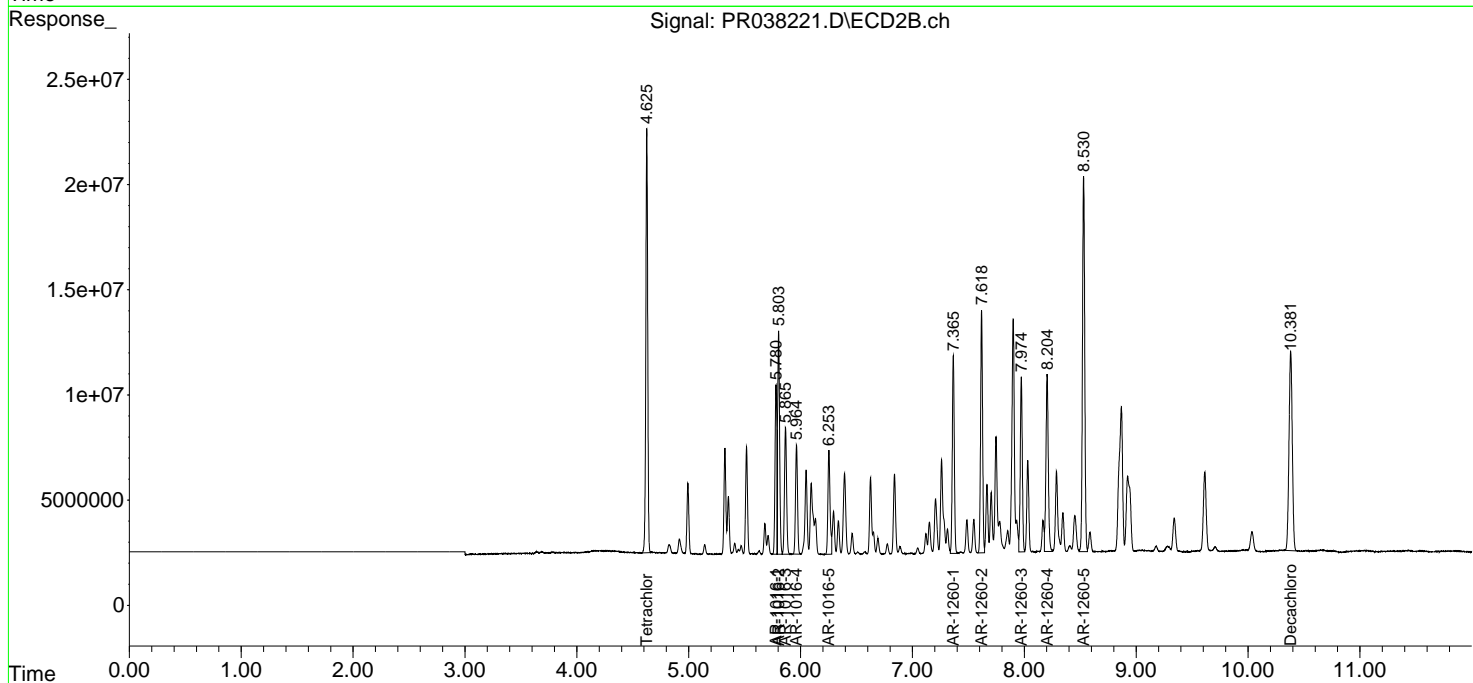
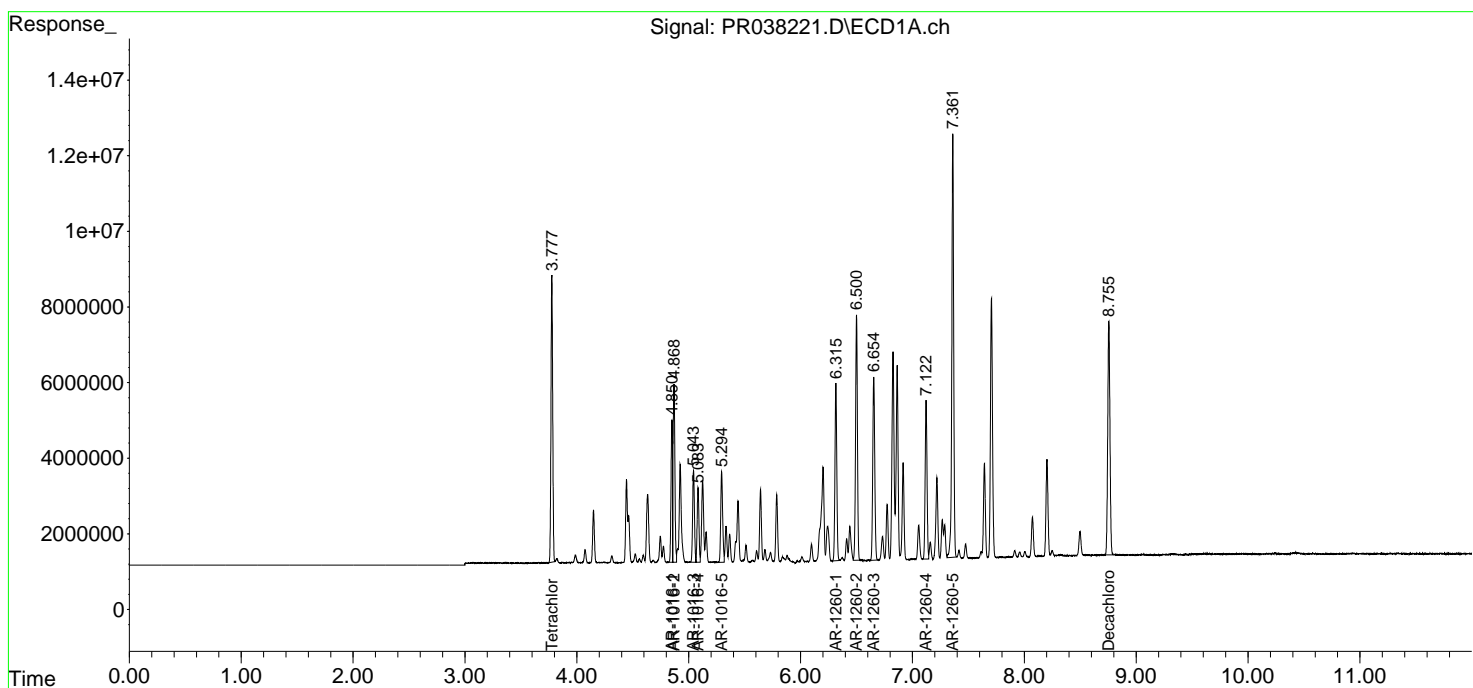
(f)=RT Delta > 1/2 Window (#)=Amounts differ by > 25% (m)=manual int.

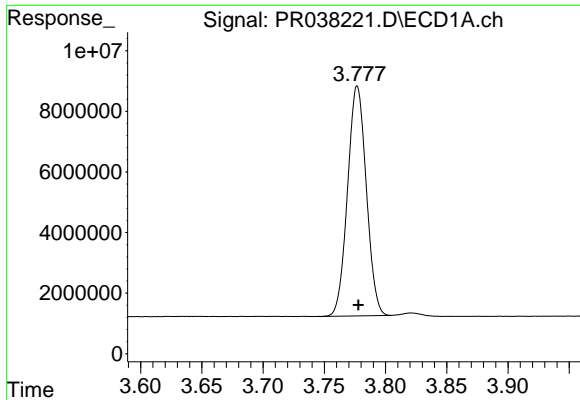
Data Path : Z:\pestpcbsrv\HPCHEM1\ECD_R\Data\PR052319\
 Data File : PR038221.D
 Signal(s) : Signal #1: ECD1A.ch Signal #2: ECD2B.ch
 Acq On : 23 May 2019 14:51
 Operator : SM\MA
 Sample : AR1660CCC500
 Misc :
 ALS Vial : 3 Sample Multiplier: 1

Instrument :
 ECD_R
 ClientSampleId :
 AR1660CCC500

Integration File signal 1: autoint1.e
 Integration File signal 2: autoint2.e
 Quant Time: May 23 15:04:42 2019
 Quant Method : Z:\pestpcbsrv\HPCHEM1\ECD_R\Method\PR052319.M
 Quant Title : GC EXTRACTABLES
 QLast Update : Thu May 23 13:10:55 2019
 Response via : Initial Calibration
 Integrator: ChemStation

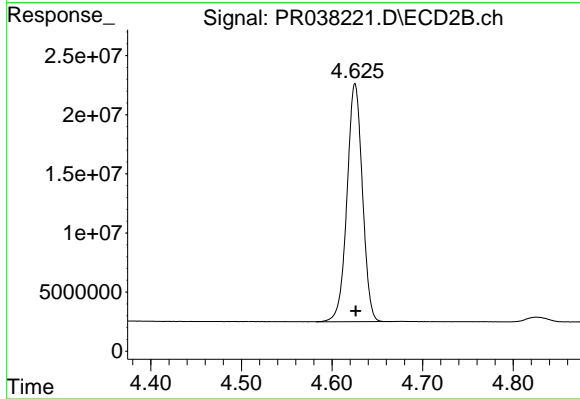
Volume Inj. : 2 µl
 Signal #1 Phase : ZB-MR1 Signal #2 Phase: ZB-MR2
 Signal #1 Info : 30Mx0.32mmx 0.50µm Signal #2 Info : 30M x 0.32mm x 0.25µm



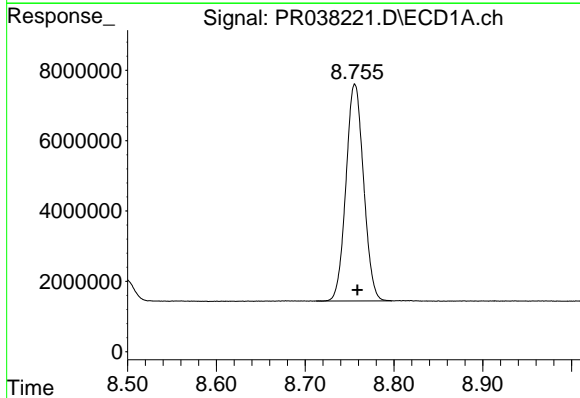


#1 Tetrachloro-m-xylene
 R.T.: 3.777 min
 Delta R.T.: -0.001 min
 Response: 80907309
 Conc: 48.25 ng/ml

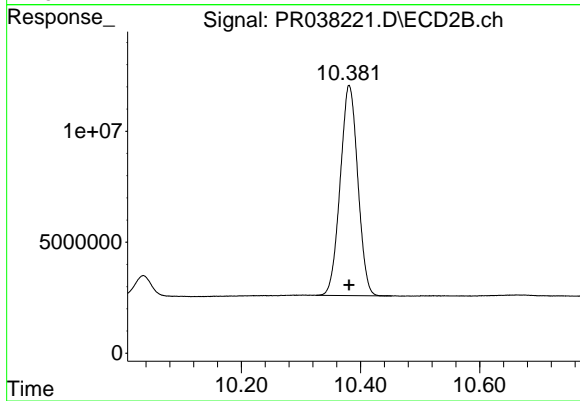
Instrument :
 ECD_R
 ClientSampleId :
 AR1660CCC500



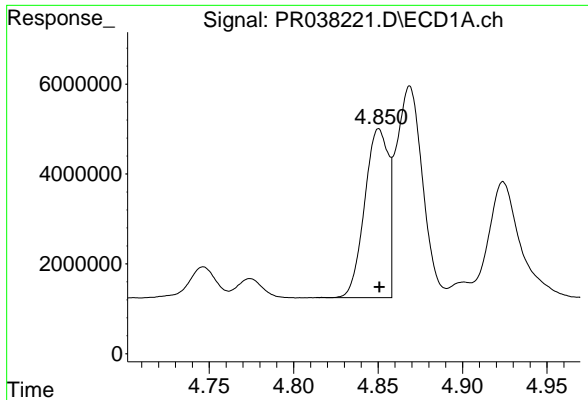
#1 Tetrachloro-m-xylene
 R.T.: 4.625 min
 Delta R.T.: 0.000 min
 Response: 237764873
 Conc: 46.86 ng/ml



#2 Decachlorobiphenyl
 R.T.: 8.756 min
 Delta R.T.: -0.003 min
 Response: 84950788
 Conc: 43.79 ng/ml



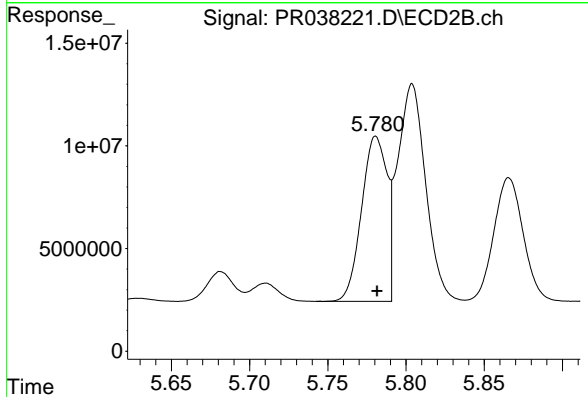
#2 Decachlorobiphenyl
 R.T.: 10.381 min
 Delta R.T.: 0.000 min
 Response: 193980883
 Conc: 43.98 ng/ml



#3 AR-1016-1

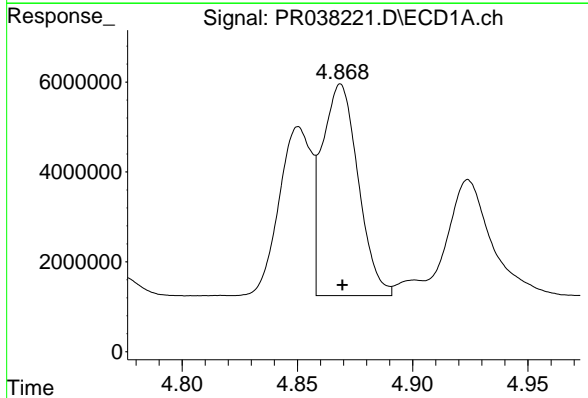
R.T.: 4.850 min
 Delta R.T.: 0.000 min
 Response: 36640018
 Conc: 500.04 ng/ml

Instrument :
 ECD_R
ClientSampleId :
 AR1660CCC500



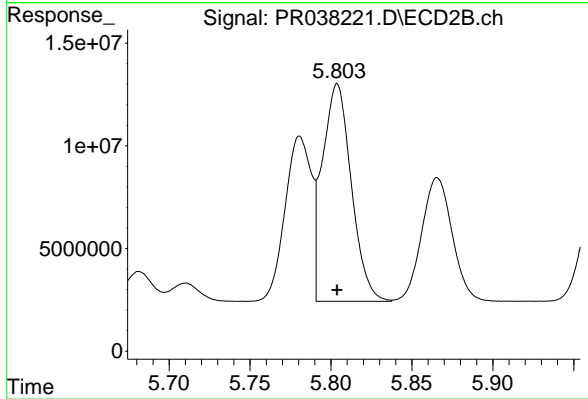
#3 AR-1016-1

R.T.: 5.781 min
 Delta R.T.: 0.000 min
 Response: 91220513
 Conc: 484.18 ng/ml



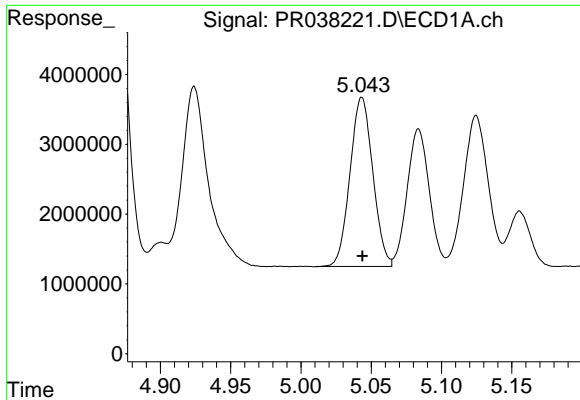
#4 AR-1016-2

R.T.: 4.869 min
 Delta R.T.: 0.000 min
 Response: 51267392
 Conc: 516.16 ng/ml



#4 AR-1016-2

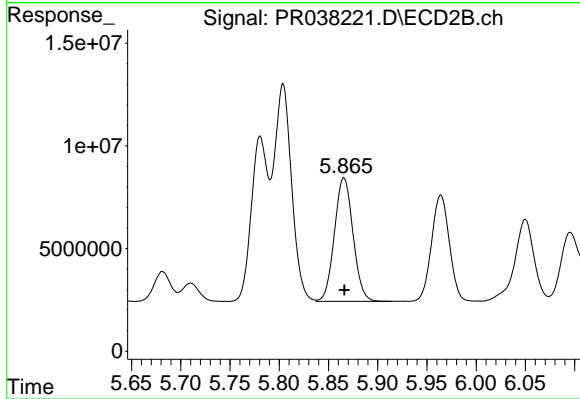
R.T.: 5.804 min
 Delta R.T.: 0.000 min
 Response: 131833884
 Conc: 485.40 ng/ml



#5 AR-1016-3

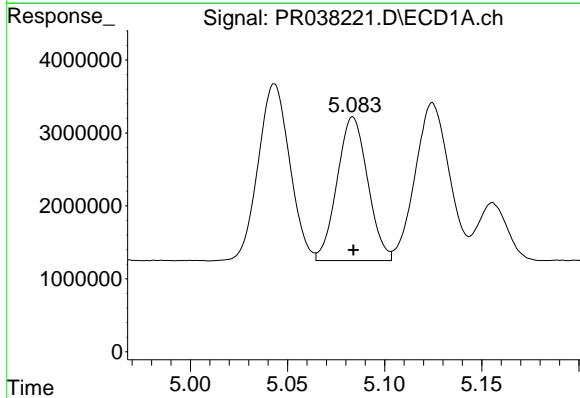
R.T.: 5.043 min
Delta R.T.: 0.000 min
Response: 27371722
Conc: 516.31 ng/ml

Instrument :
ECD_R
ClientSampled :
AR1660CCC500



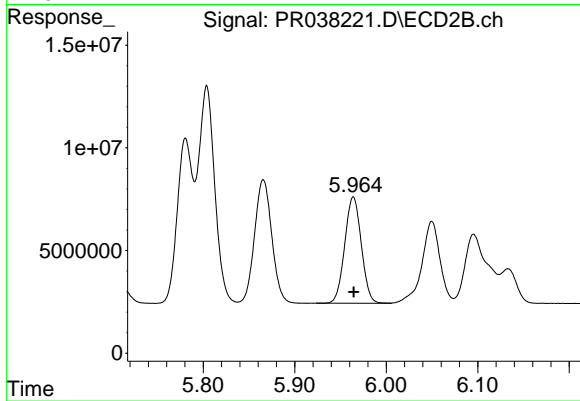
#5 AR-1016-3

R.T.: 5.866 min
Delta R.T.: 0.000 min
Response: 78978580
Conc: 480.97 ng/ml



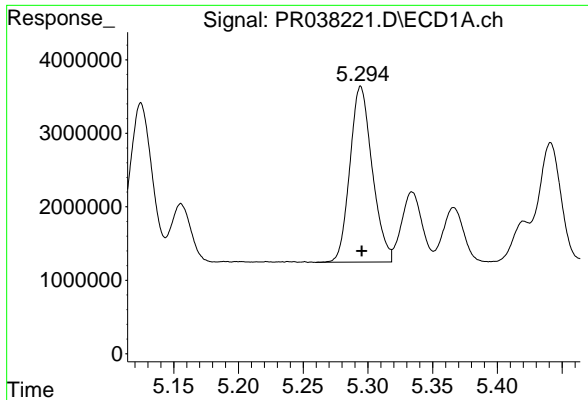
#6 AR-1016-4

R.T.: 5.084 min
Delta R.T.: 0.000 min
Response: 21599546
Conc: 512.84 ng/ml



#6 AR-1016-4

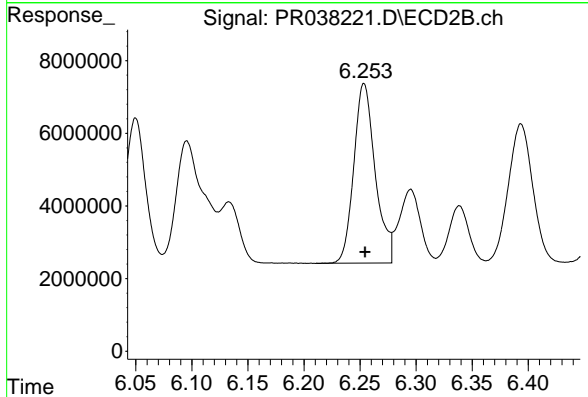
R.T.: 5.964 min
Delta R.T.: 0.000 min
Response: 65121345
Conc: 489.88 ng/ml



#7 AR-1016-5

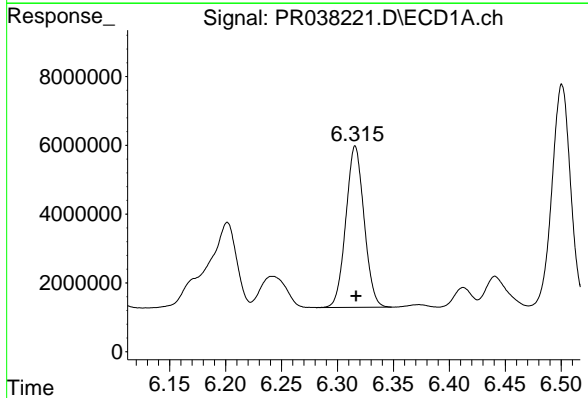
R.T.: 5.294 min
Delta R.T.: 0.000 min
Response: 28679067
Conc: 510.93 ng/ml

Instrument :
ECD_R
ClientSampleId :
AR1660CCC500



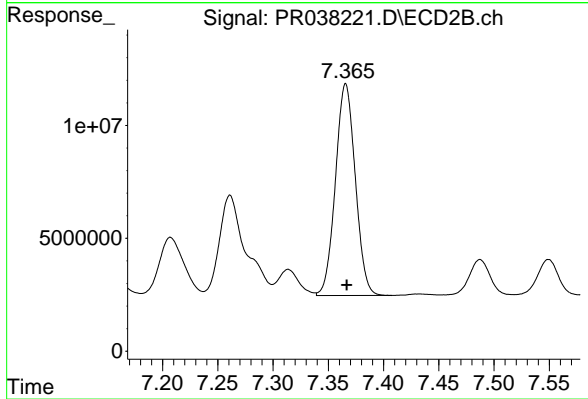
#7 AR-1016-5

R.T.: 6.254 min
Delta R.T.: 0.000 min
Response: 65692432
Conc: 486.01 ng/ml



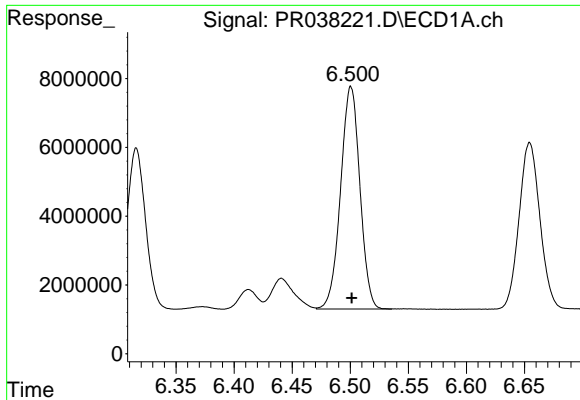
#31 AR-1260-1

R.T.: 6.316 min
Delta R.T.: 0.000 min
Response: 53307572
Conc: 497.74 ng/ml



#31 AR-1260-1

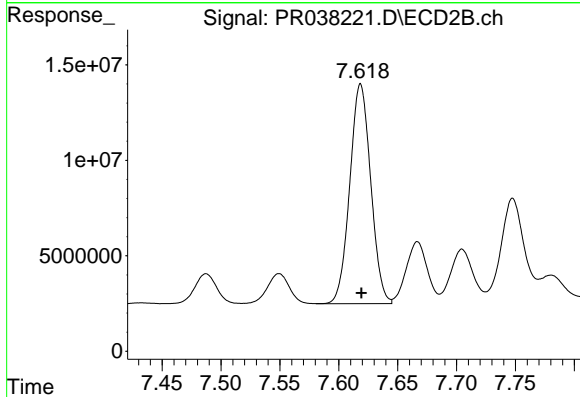
R.T.: 7.366 min
Delta R.T.: -0.001 min
Response: 117384417
Conc: 492.17 ng/ml



#32 AR-1260-2

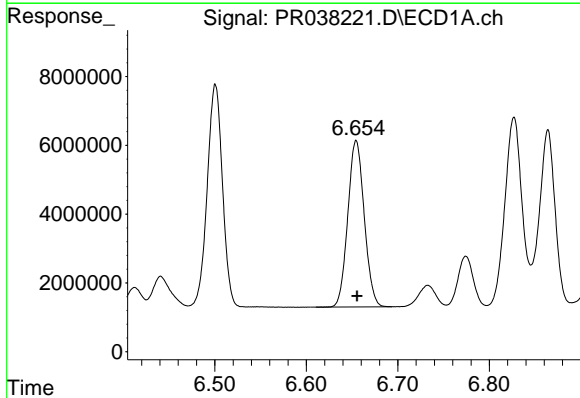
R.T.: 6.501 min
Delta R.T.: 0.000 min
Response: 74823330
Conc: 507.71 ng/ml

Instrument :
ECD_R
ClientSampleId :
AR1660CCC500



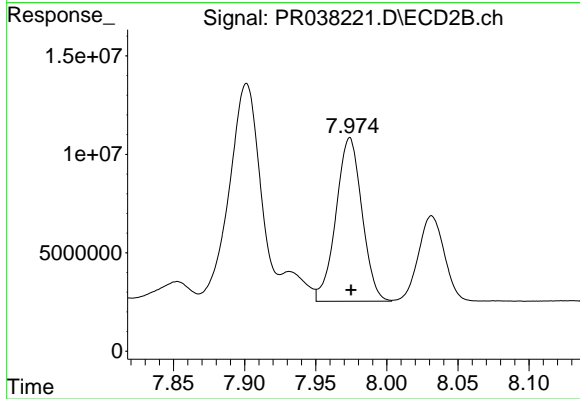
#32 AR-1260-2

R.T.: 7.619 min
Delta R.T.: 0.000 min
Response: 142621359
Conc: 498.59 ng/ml



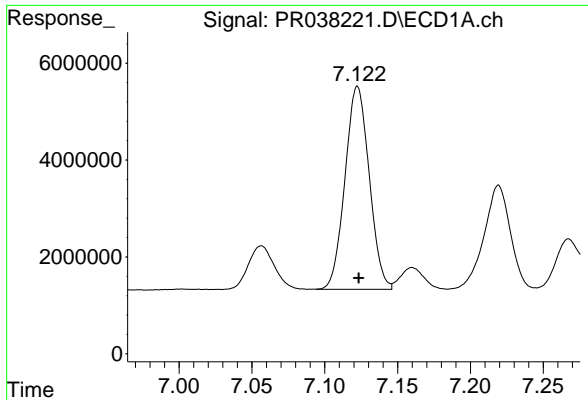
#33 AR-1260-3

R.T.: 6.654 min
Delta R.T.: 0.000 min
Response: 60276965
Conc: 494.92 ng/ml



#33 AR-1260-3

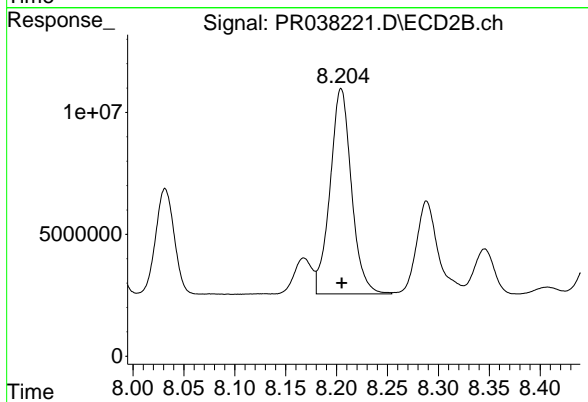
R.T.: 7.974 min
Delta R.T.: 0.000 min
Response: 105803943
Conc: 497.07 ng/ml



#34 AR-1260-4

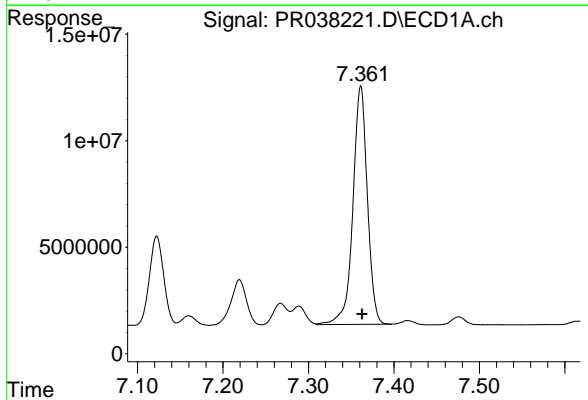
R.T.: 7.122 min
Delta R.T.: 0.000 min
Response: 48474735
Conc: 492.64 ng/ml

Instrument :
ECD_R
ClientSampleId :
AR1660CCC500



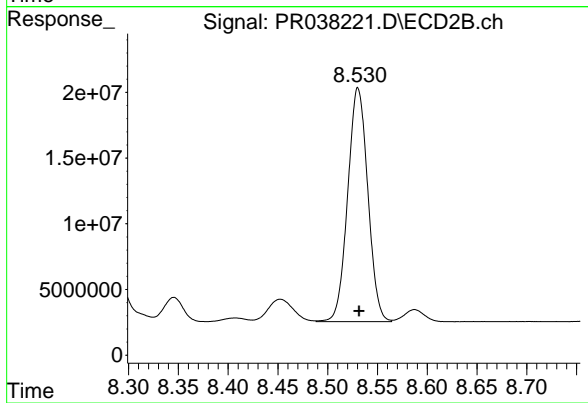
#34 AR-1260-4

R.T.: 8.204 min
Delta R.T.: 0.000 min
Response: 123336622
Conc: 498.43 ng/ml



#35 AR-1260-5

R.T.: 7.361 min
Delta R.T.: -0.001 min
Response: 131590724
Conc: 483.00 ng/ml



#35 AR-1260-5

R.T.: 8.530 min
Delta R.T.: -0.001 min
Response: 250449839
Conc: 488.40 ng/ml