

Data Path : Z:\pestpcbsrv\HPCHEM1\ECD_R\Data\PR052319\
 Data File : PR038227.D
 Signal(s) : Signal #1: ECD1A.ch Signal #2: ECD2B.ch
 Acq On : 23 May 2019 16:19
 Operator : SM\MA
 Sample : K2995-01DL 50X
 Misc :
 ALS Vial : 144 Sample Multiplier: 1

Instrument :
 ECD_R
ClientSampleId :
 PRE-EFFL5-UFDL

Manual Integrations
APPROVED
 Ankita
 5/24/2019 3:12:18 PM

Integration File signal 1: autoint1.e
 Integration File signal 2: autoint2.e
 Quant Time: May 23 16:32:28 2019
 Quant Method : Z:\pestpcbsrv\HPCHEM1\ECD_R\Method\PR052319.M
 Quant Title : GC EXTRACTABLES
 QLast Update : Thu May 23 13:10:55 2019
 Response via : Initial Calibration
 Integrator: ChemStation

Volume Inj. : 2 µl
 Signal #1 Phase : ZB-MR1 Signal #2 Phase: ZB-MR2
 Signal #1 Info : 30Mx0.32mmx 0.50µ Signal #2 Info : 30M x 0.32mm x 0.25µm

Compound	RT#1	RT#2	Resp#1	Resp#2	ng/ml	ng/ml
----------	------	------	--------	--------	-------	-------

System Monitoring Compounds

Target Compounds

21)	L5	AR-1248-1	4.854	5.781	25732183	79697576	467.598	554.372
22)	L5	AR-1248-2	5.087	6.049	26928883	97225731	384.901	508.714m#
23)	L5	AR-1248-3	5.128	6.253	28719037	120.4E6	401.440	549.253m#
24)	L5	AR-1248-4	5.298	6.653	44851048	101.0E6	476.961m	391.876
25)	L5	AR-1248-5	5.687	6.692	34779602	106.5E6	401.823	437.094

(f)=RT Delta > 1/2 Window (#)=Amounts differ by > 25% (m)=manual int.

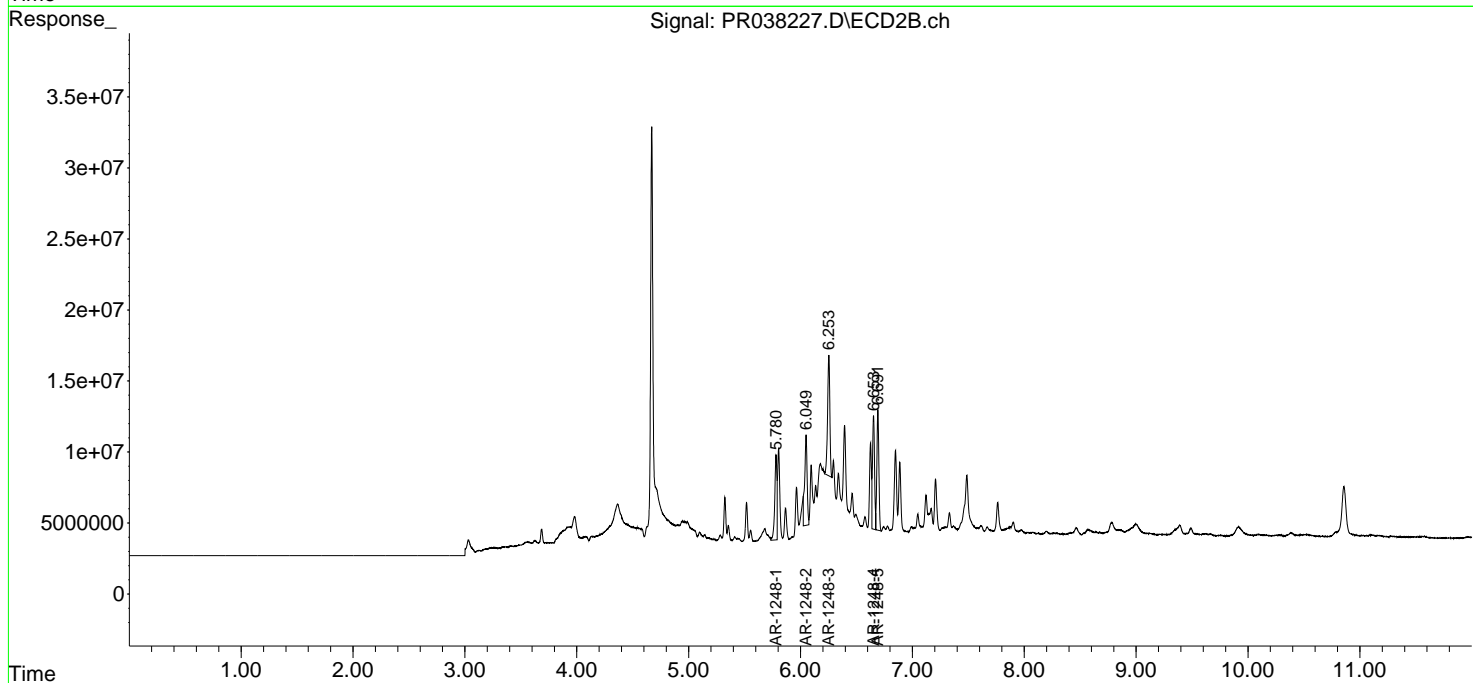
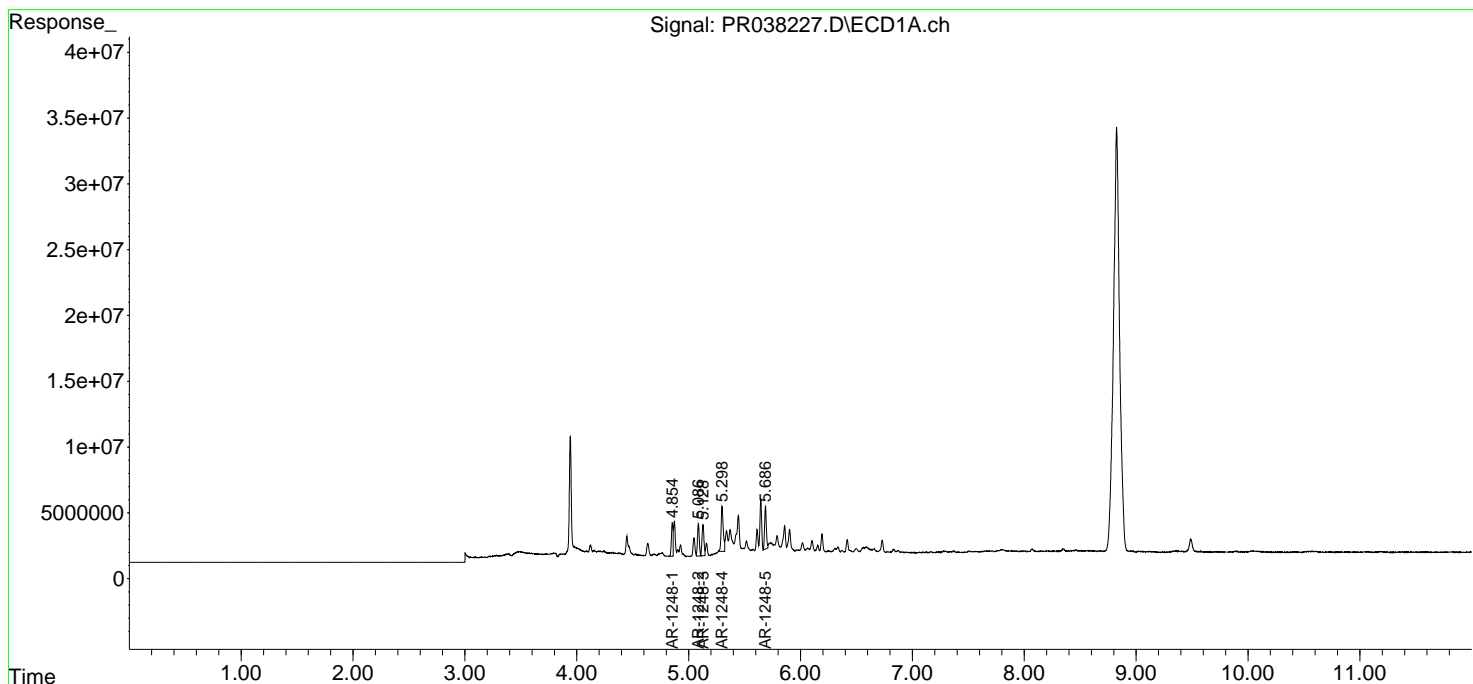
Data Path : Z:\pestpcbsrv\HPCHEM1\ECD_R\Data\PR052319\
 Data File : PR038227.D
 Signal(s) : Signal #1: ECD1A.ch Signal #2: ECD2B.ch
 Acq On : 23 May 2019 16:19
 Operator : SM\MA
 Sample : K2995-01DL 50X
 Misc :
 ALS Vial : 144 Sample Multiplier: 1

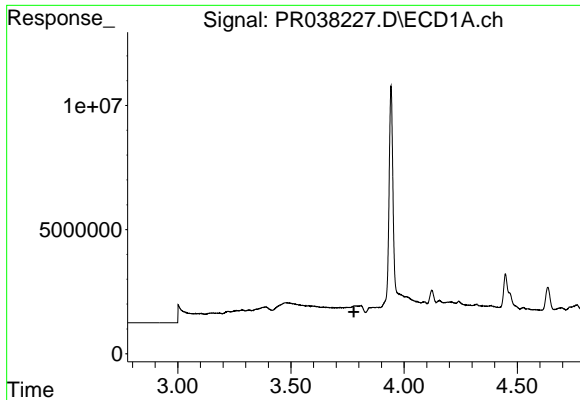
Instrument :
 ECD_R
Client Sampled :
 PRE-EFFL5-UFDL

Manual Integrations
APPROVED
 Ankita
 5/24/2019 3:12:18 PM

Integration File signal 1: autoint1.e
 Integration File signal 2: autoint2.e
 Quant Time: May 23 16:32:28 2019
 Quant Method : Z:\pestpcbsrv\HPCHEM1\ECD_R\Method\PR052319.M
 Quant Title : GC EXTRACTABLES
 QLast Update : Thu May 23 13:10:55 2019
 Response via : Initial Calibration
 Integrator: ChemStation

Volume Inj. : 2 µl
 Signal #1 Phase : ZB-MR1 Signal #2 Phase: ZB-MR2
 Signal #1 Info : 30Mx0.32mmx 0.50µ Signal #2 Info : 30M x 0.32mm x 0.25µm

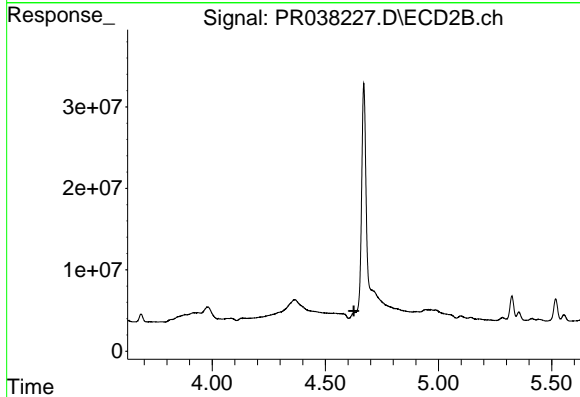




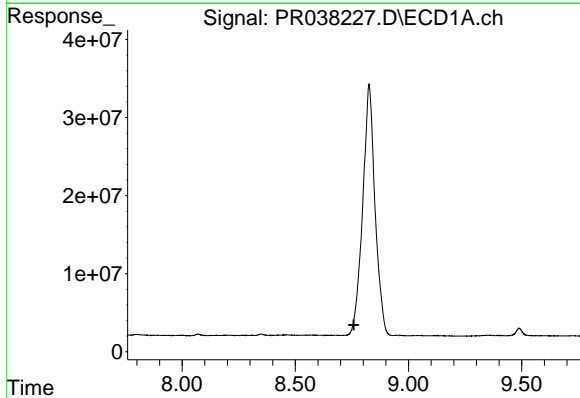
#1 Tetrachloro-m-xylene
 R.T.: 0.000 min
 Exp R.T. : 3.778 min
 Response: 0
 Conc: N.D.

Instrument :
 ECD_R
ClientSampled :
 PRE-EFFL5-UFDL

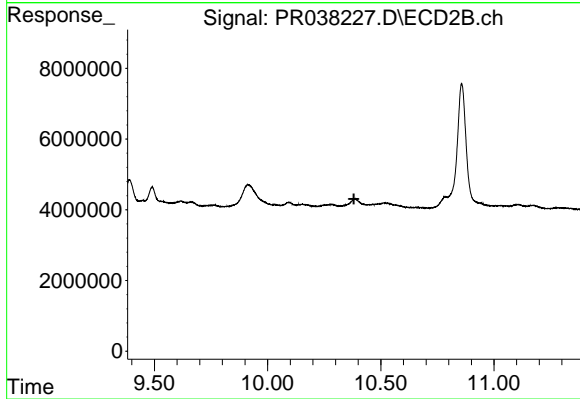
Manual Integrations
APPROVED
 Ankita
 5/24/2019 3:12:18 PM



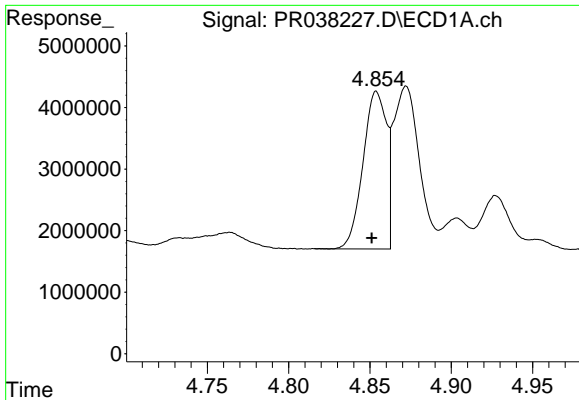
#1 Tetrachloro-m-xylene
 R.T.: 0.000 min
 Exp R.T. : 4.626 min
 Response: 0
 Conc: N.D.



#2 Decachlorobiphenyl
 R.T.: 0.000 min
 Exp R.T. : 8.759 min
 Response: 0
 Conc: N.D.



#2 Decachlorobiphenyl
 R.T.: 0.000 min
 Exp R.T. : 10.381 min
 Response: 0
 Conc: N.D.

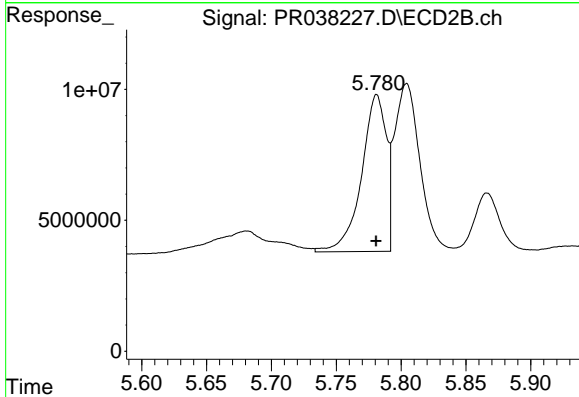


#21 AR-1248-1

R.T.: 4.854 min
 Delta R.T.: 0.003 min
 Response: 25732183
 Conc: 467.60 ng/ml

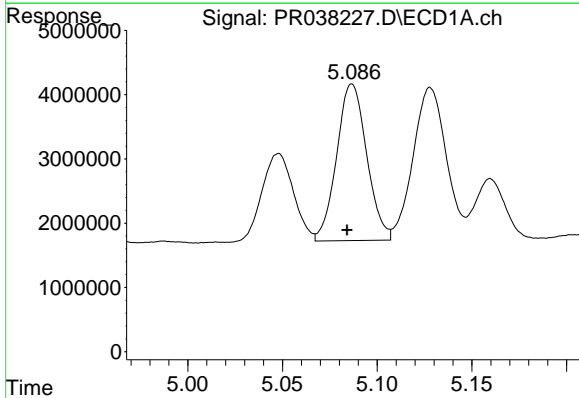
Instrument :
 ECD_R
ClientSampled :
 PRE-EFFL5-UFDL

Manual Integrations
APPROVED
 Ankita
 5/24/2019 3:12:18 PM



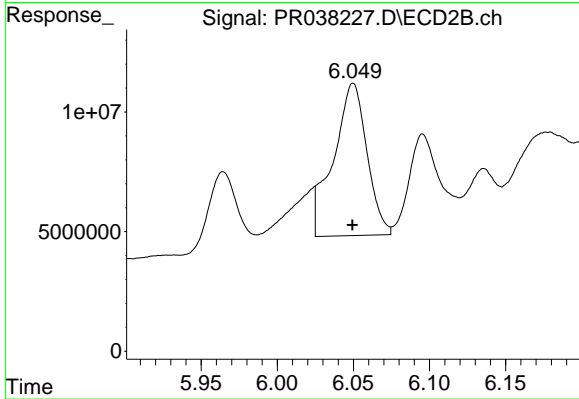
#21 AR-1248-1

R.T.: 5.781 min
 Delta R.T.: 0.000 min
 Response: 79697576
 Conc: 554.37 ng/ml



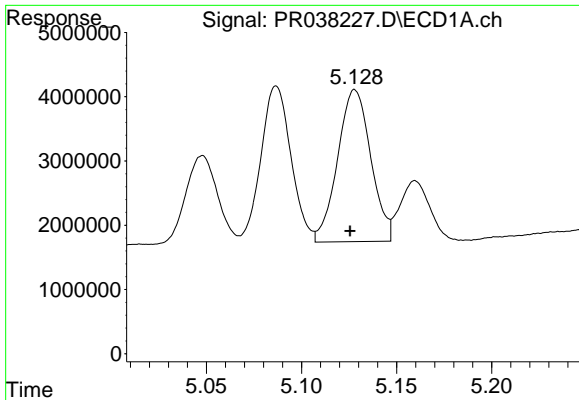
#22 AR-1248-2

R.T.: 5.087 min
 Delta R.T.: 0.003 min
 Response: 26928883
 Conc: 384.90 ng/ml



#22 AR-1248-2

R.T.: 6.049 min
 Delta R.T.: 0.000 min
 Response: 97225731
 Conc: 508.71 ng/ml m

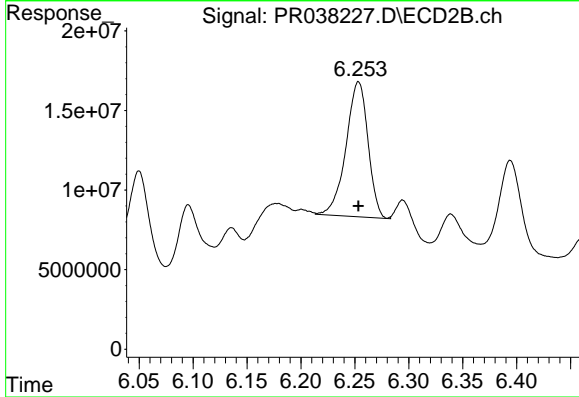


#23 AR-1248-3

R.T.: 5.128 min
 Delta R.T.: 0.003 min
 Response: 28719037
 Conc: 401.44 ng/ml

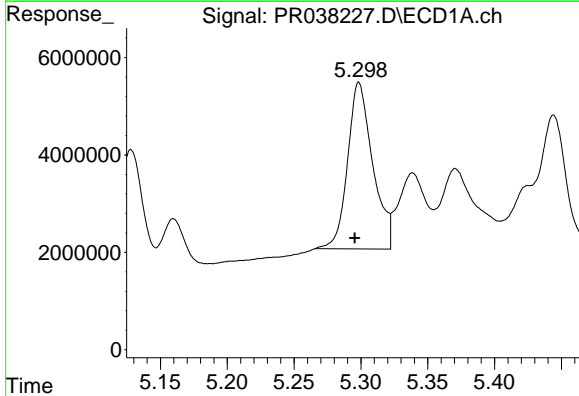
Instrument :
 ECD_R
ClientSampled :
 PRE-EFFL5-UFDL

Manual Integrations
APPROVED
 Ankita
 5/24/2019 3:12:18 PM



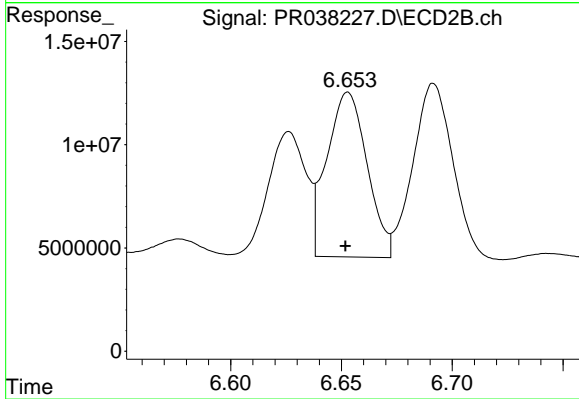
#23 AR-1248-3

R.T.: 6.253 min
 Delta R.T.: 0.000 min
 Response: 120424050
 Conc: 549.25 ng/ml m



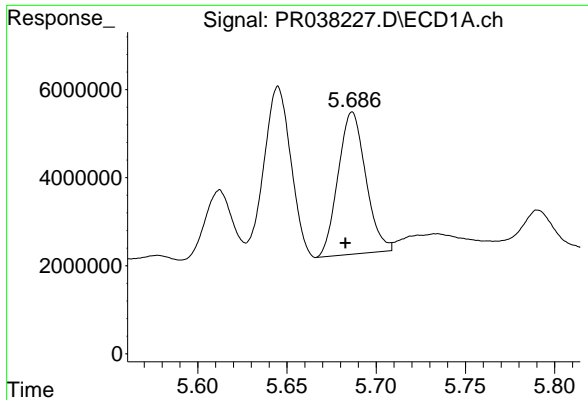
#24 AR-1248-4

R.T.: 5.298 min
 Delta R.T.: 0.003 min
 Response: 44851048
 Conc: 476.96 ng/ml m



#24 AR-1248-4

R.T.: 6.653 min
 Delta R.T.: 0.001 min
 Response: 100957719
 Conc: 391.88 ng/ml

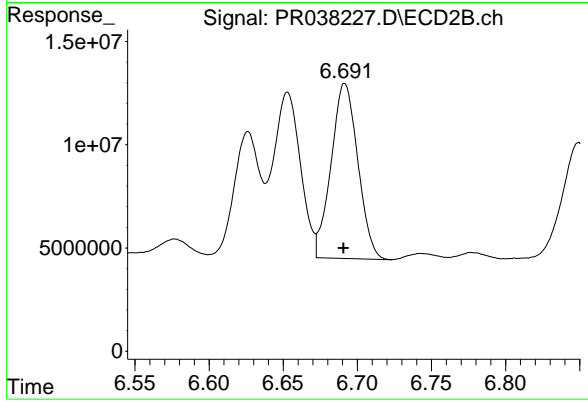


#25 AR-1248-5

R.T.: 5.687 min
Delta R.T.: 0.004 min
Response: 34779602
Conc: 401.82 ng/ml

Instrument :
ECD_R
ClientSampled :
PRE-EFFL5-UFDL

Manual Integrations
APPROVED
Ankita
5/24/2019 3:12:18 PM



#25 AR-1248-5

R.T.: 6.692 min
Delta R.T.: 0.001 min
Response: 106530467
Conc: 437.09 ng/ml