

Data Path : Z:\pestpcbsrv\HPCHEM1\ECD_R\Data\PR052319\
 Data File : PR038232.D
 Signal(s) : Signal #1: ECD1A.ch Signal #2: ECD2B.ch
 Acq On : 23 May 2019 18:22
 Operator : SM\MA
 Sample : PB119922BS
 Misc :
 ALS Vial : 143 Sample Multiplier: 1

Instrument :
 ECD_R
ClientSampleId :
 PB119922BS

Manual Integrations
APPROVED
 Ankita
 5/24/2019 3:12:30 PM

Integration File signal 1: autoint1.e
 Integration File signal 2: autoint2.e
 Quant Time: May 24 07:20:18 2019
 Quant Method : Z:\pestpcbsrv\HPCHEM1\ECD_R\Method\PR052319.M
 Quant Title : GC EXTRACTABLES
 QLast Update : Fri May 24 07:01:56 2019
 Response via : Initial Calibration
 Integrator: ChemStation

Volume Inj. : 2 µl
 Signal #1 Phase : ZB-MR1 Signal #2 Phase: ZB-MR2
 Signal #1 Info : 30Mx0.32mmx 0.50µ Signal #2 Info : 30M x 0.32mm x 0.25µm

Compound	RT#1	RT#2	Resp#1	Resp#2	ng/ml	ng/ml

System Monitoring Compounds						
1) SA Tetrachlo...	3.777	4.625	33568530	97387695	20.018	19.196
2) SA Decachlor...	8.755	10.378	42954796	99502221	22.143	22.558
Target Compounds						
3) L1 AR-1016-1	4.850	5.780	16364466	43655131	223.334	231.712
4) L1 AR-1016-2	4.869	5.803	23411330	60696807	235.703	223.482
5) L1 AR-1016-3	5.043	5.865	12374205	36751830	233.413m	223.812
6) L1 AR-1016-4	5.083	5.963	10092950	30577626	239.638m	230.022
7) L1 AR-1016-5	5.294	6.252	13617107	37940655	242.595m	280.696m
31) L7 AR-1260-1	6.315	7.365	26212244	58165204	244.745	243.873
32) L7 AR-1260-2	6.500	7.617	35665073	69366984	242.002	242.502
33) L7 AR-1260-3	6.654	7.973	31065534	51988937	255.071m	244.245
34) L7 AR-1260-4	7.121	8.203	25691053	60777082	261.095m	245.616
35) L7 AR-1260-5	7.360	8.528	67004205	121.3E6	245.937	236.508

(f)=RT Delta > 1/2 Window (#)=Amounts differ by > 25% (m)=manual int.

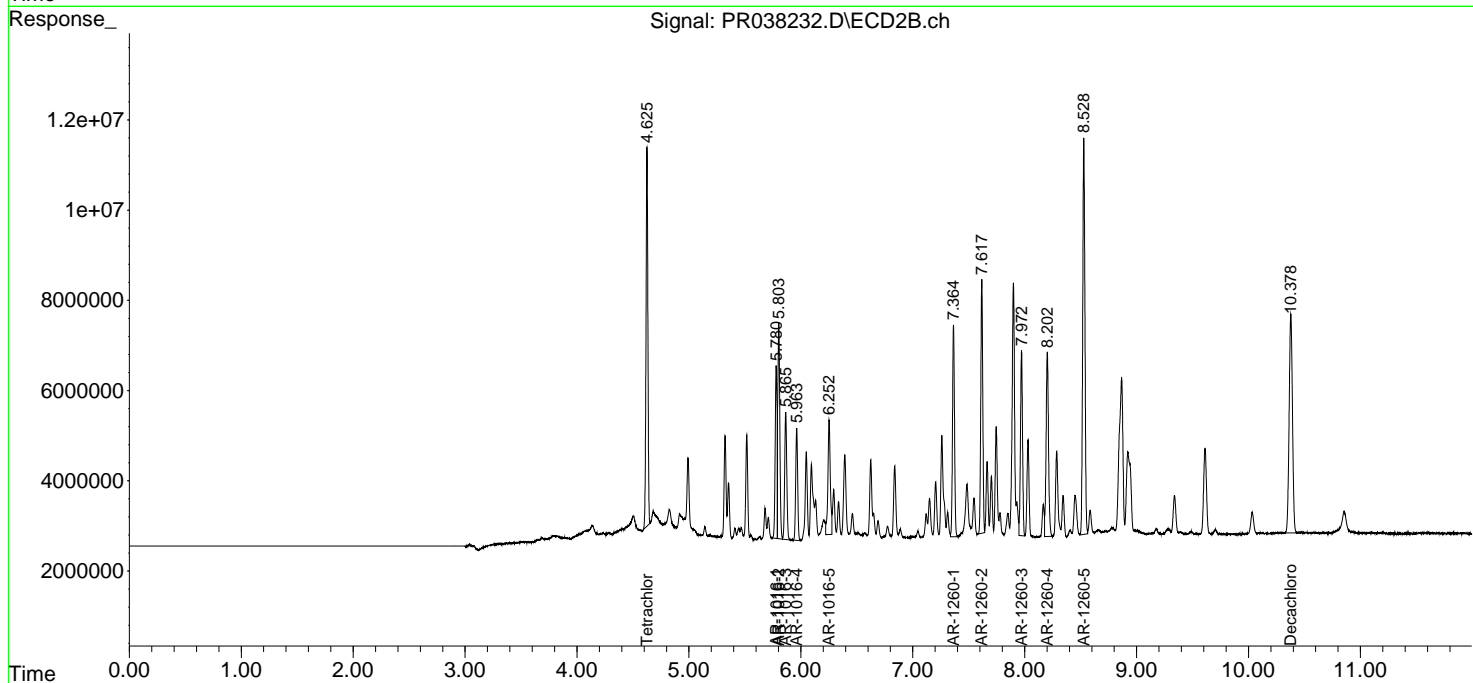
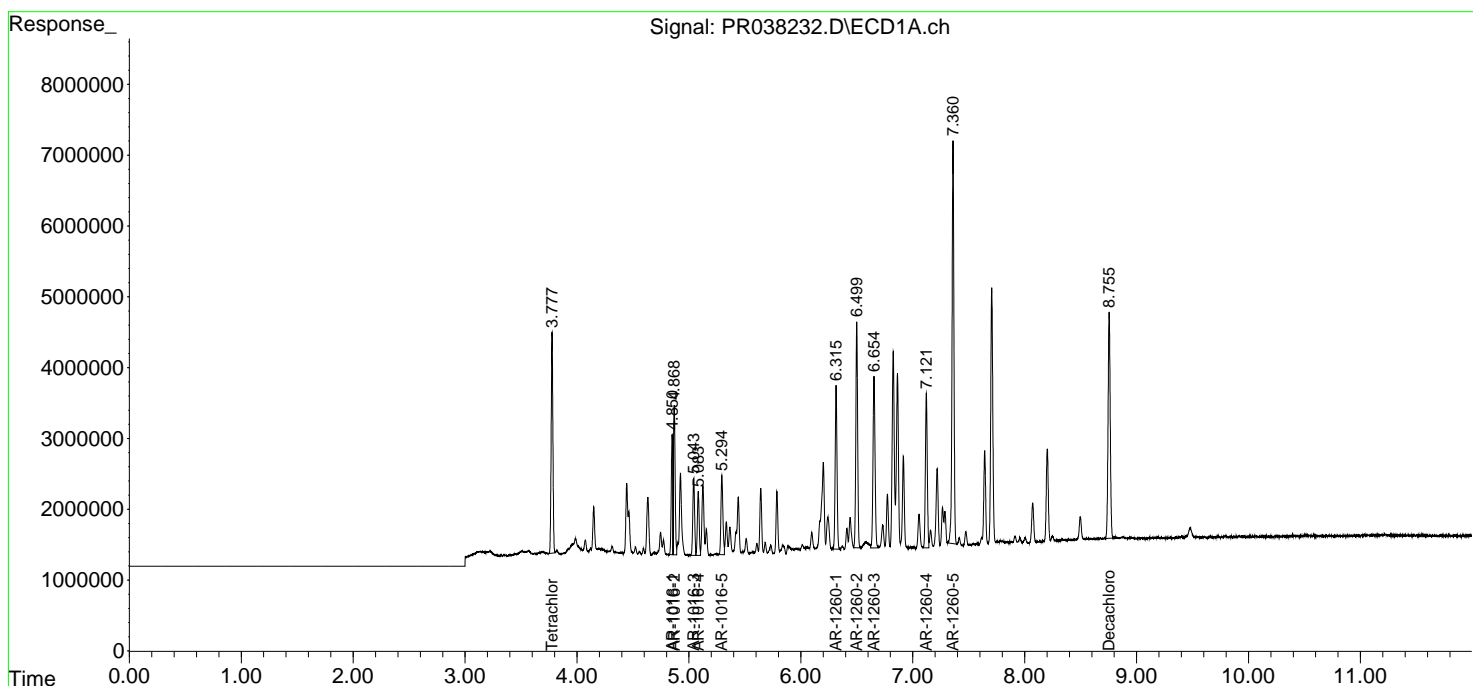
Data Path : Z:\pestpcbsrv\HPCHEM1\ECD_R\Data\PR052319\
 Data File : PR038232.D
 Signal(s) : Signal #1: ECD1A.ch Signal #2: ECD2B.ch
 Acq On : 23 May 2019 18:22
 Operator : SM\MA
 Sample : PB119922BS
 Misc :
 ALS Vial : 143 Sample Multiplier: 1

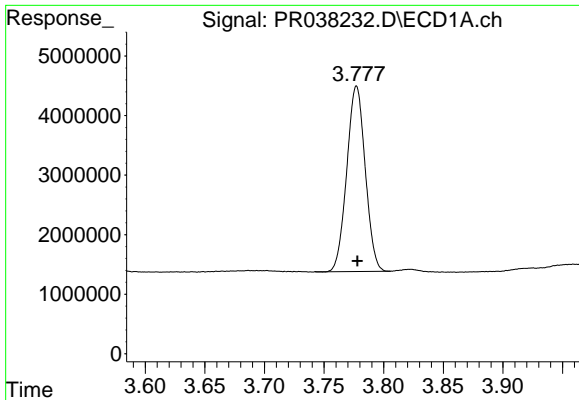
Instrument :
 ECD_R
Client Sampled :
 PB119922BS

Manual Integrations
APPROVED
 Ankita
 5/24/2019 3:12:30 PM

Integration File signal 1: autoint1.e
 Integration File signal 2: autoint2.e
 Quant Time: May 24 07:20:18 2019
 Quant Method : Z:\pestpcbsrv\HPCHEM1\ECD_R\Method\PR052319.M
 Quant Title : GC EXTRACTABLES
 QLast Update : Fri May 24 07:01:56 2019
 Response via : Initial Calibration
 Integrator: ChemStation

Volume Inj. : 2 µl
 Signal #1 Phase : ZB-MR1 Signal #2 Phase: ZB-MR2
 Signal #1 Info : 30Mx0.32mmx 0.50µ Signal #2 Info : 30M x 0.32mm x 0.25µm

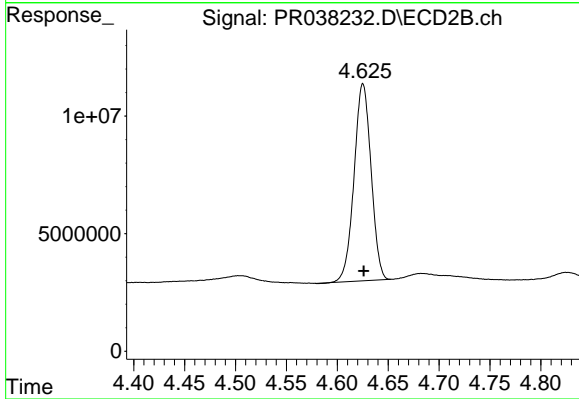




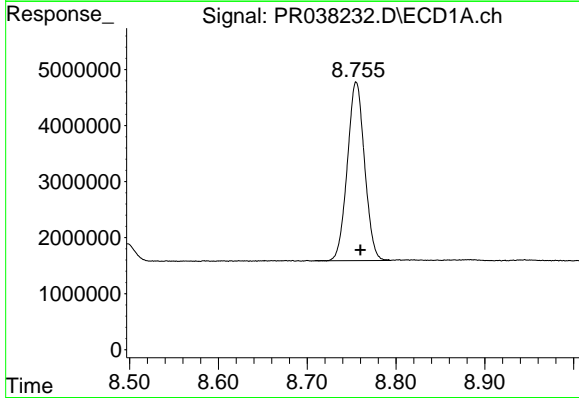
#1 Tetrachloro-m-xylene
 R.T.: 3.777 min
 Delta R.T.: 0.000 min
 Response: 33568530
 Conc: 20.02 ng/ml

Instrument :
 ECD_R
 ClientSampleId :
 PB119922BS

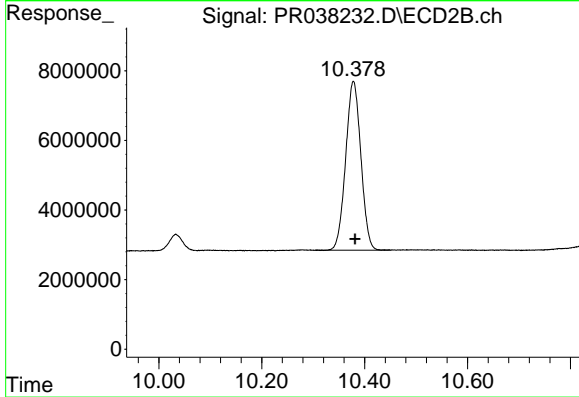
Manual Integrations
 APPROVED
 Ankita
 5/24/2019 3:12:30 PM



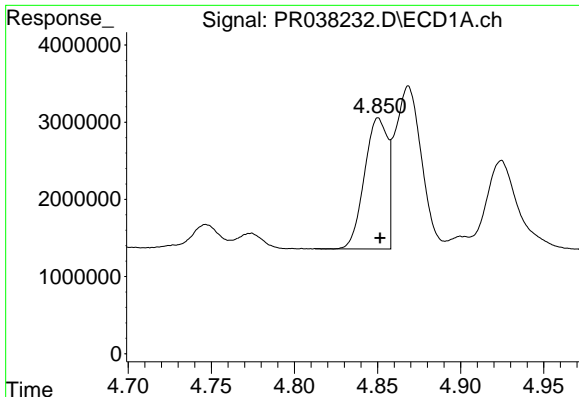
#1 Tetrachloro-m-xylene
 R.T.: 4.625 min
 Delta R.T.: 0.000 min
 Response: 97387695
 Conc: 19.20 ng/ml



#2 Decachlorobiphenyl
 R.T.: 8.755 min
 Delta R.T.: -0.004 min
 Response: 42954796
 Conc: 22.14 ng/ml



#2 Decachlorobiphenyl
 R.T.: 10.378 min
 Delta R.T.: -0.003 min
 Response: 99502221
 Conc: 22.56 ng/ml

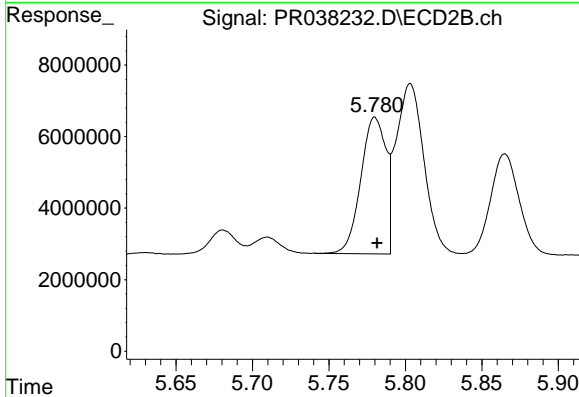


#3 AR-1016-1

R.T.: 4.850 min
 Delta R.T.: 0.000 min
 Response: 16364466
 Conc: 223.33 ng/ml

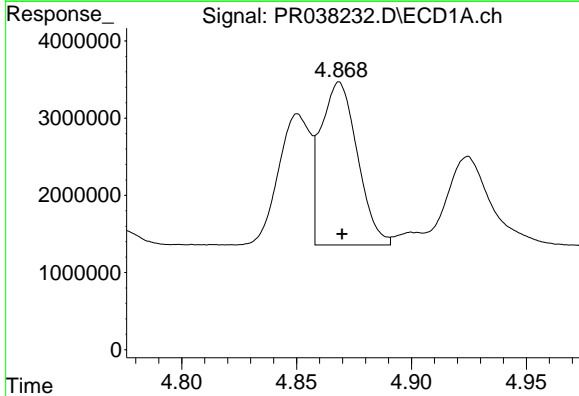
Instrument :
 ECD_R
ClientSampled :
 PB119922BS

Manual Integrations
APPROVED
 Ankita
 5/24/2019 3:12:30 PM



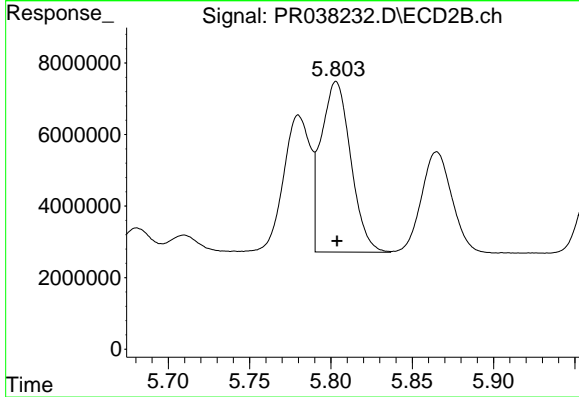
#3 AR-1016-1

R.T.: 5.780 min
 Delta R.T.: -0.001 min
 Response: 43655131
 Conc: 231.71 ng/ml



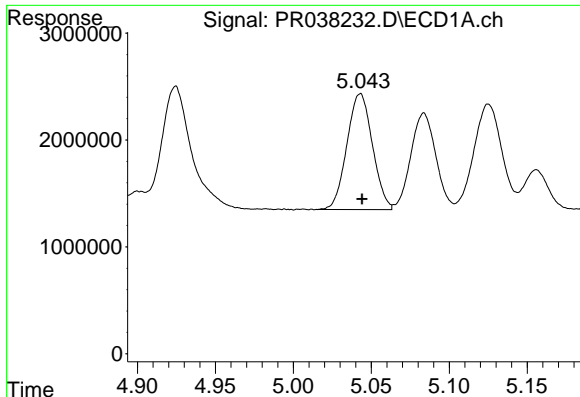
#4 AR-1016-2

R.T.: 4.869 min
 Delta R.T.: -0.001 min
 Response: 23411330
 Conc: 235.70 ng/ml



#4 AR-1016-2

R.T.: 5.803 min
 Delta R.T.: 0.000 min
 Response: 60696807
 Conc: 223.48 ng/ml



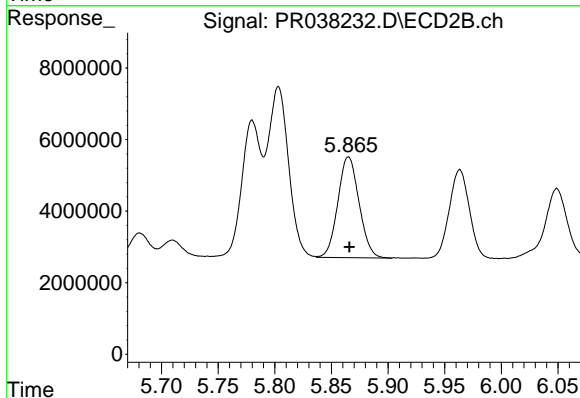
#5 AR-1016-3

R.T.: 5.043 min
 Delta R.T.: -0.001 min
 Response: 12374205
 Conc: 233.41 ng/ml m

Instrument :
 ECD_R
 ClientSampled :
 PB119922BS

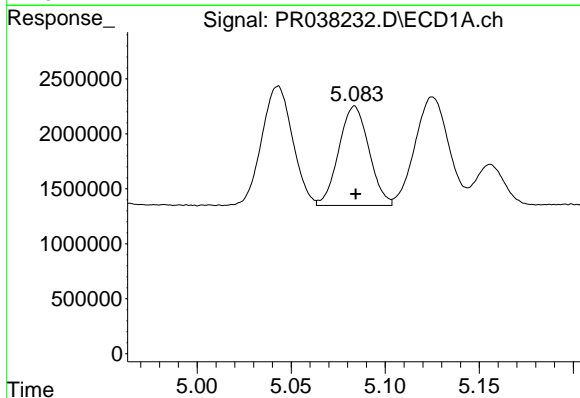
Manual Integrations
 APPROVED

Ankita
 5/24/2019 3:12:30 PM



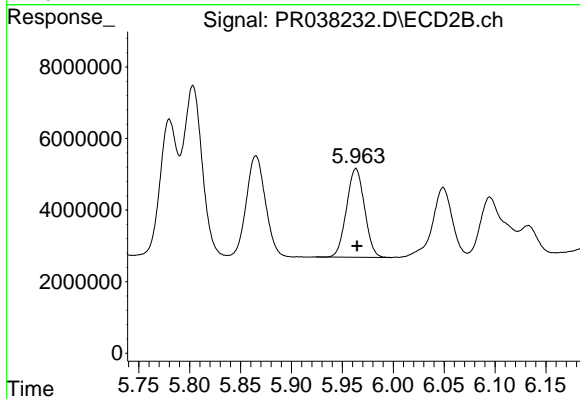
#5 AR-1016-3

R.T.: 5.865 min
 Delta R.T.: 0.000 min
 Response: 36751830
 Conc: 223.81 ng/ml



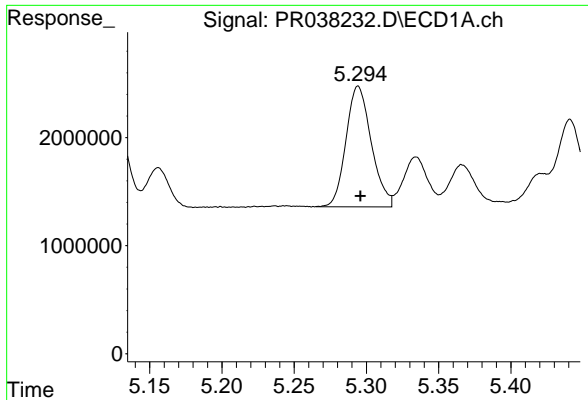
#6 AR-1016-4

R.T.: 5.083 min
 Delta R.T.: 0.000 min
 Response: 10092950
 Conc: 239.64 ng/ml m



#6 AR-1016-4

R.T.: 5.963 min
 Delta R.T.: 0.000 min
 Response: 30577626
 Conc: 230.02 ng/ml

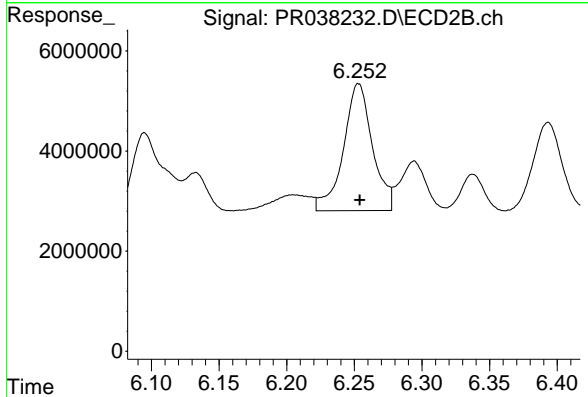


#7 AR-1016-5

R.T.: 5.294 min
 Delta R.T.: -0.002 min
 Response: 13617107
 Conc: 242.59 ng/ml m

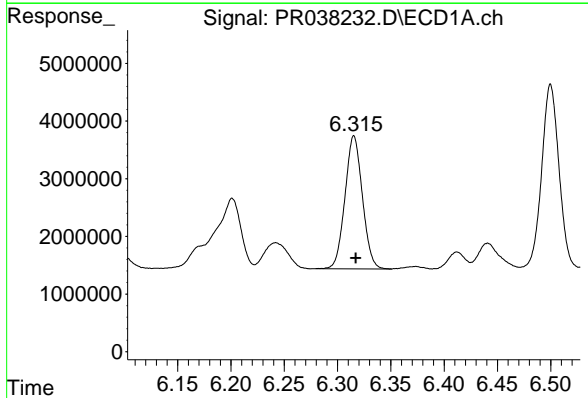
Instrument :
 ECD_R
ClientSampled :
 PB119922BS

Manual Integrations
APPROVED
 Ankita
 5/24/2019 3:12:30 PM



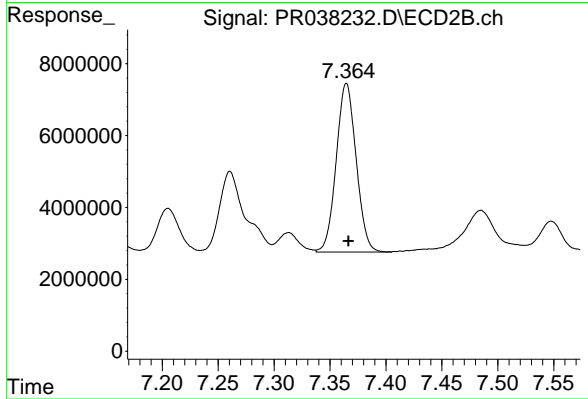
#7 AR-1016-5

R.T.: 6.252 min
 Delta R.T.: -0.002 min
 Response: 37940655
 Conc: 280.70 ng/ml m



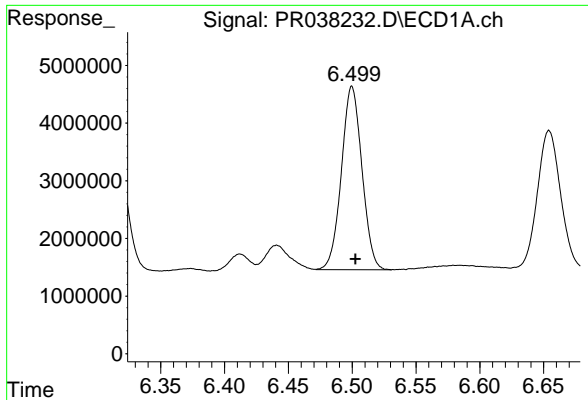
#31 AR-1260-1

R.T.: 6.315 min
 Delta R.T.: -0.002 min
 Response: 26212244
 Conc: 244.75 ng/ml



#31 AR-1260-1

R.T.: 7.365 min
 Delta R.T.: -0.002 min
 Response: 58165204
 Conc: 243.87 ng/ml

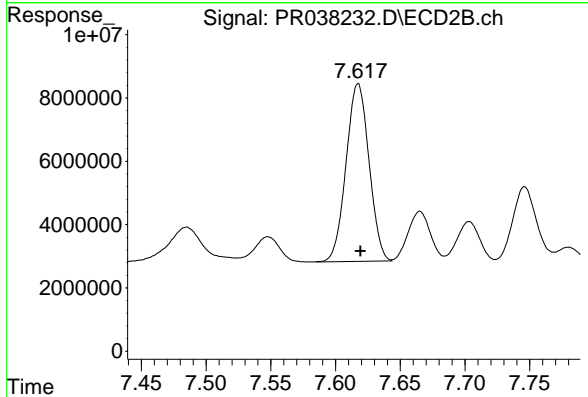


#32 AR-1260-2

R.T.: 6.500 min
 Delta R.T.: -0.003 min
 Response: 35665073
 Conc: 242.00 ng/ml

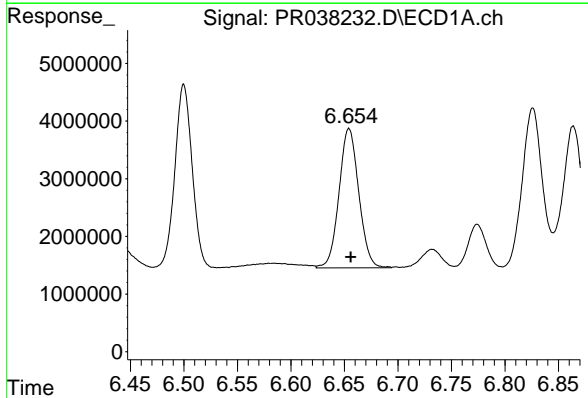
Instrument :
 ECD_R
ClientSampled :
 PB119922BS

Manual Integrations
APPROVED
 Ankita
 5/24/2019 3:12:30 PM



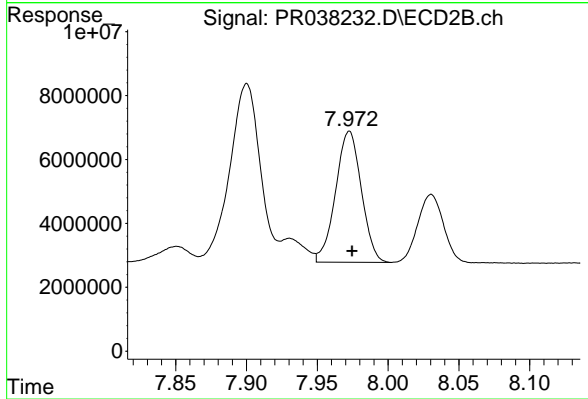
#32 AR-1260-2

R.T.: 7.617 min
 Delta R.T.: -0.002 min
 Response: 69366984
 Conc: 242.50 ng/ml



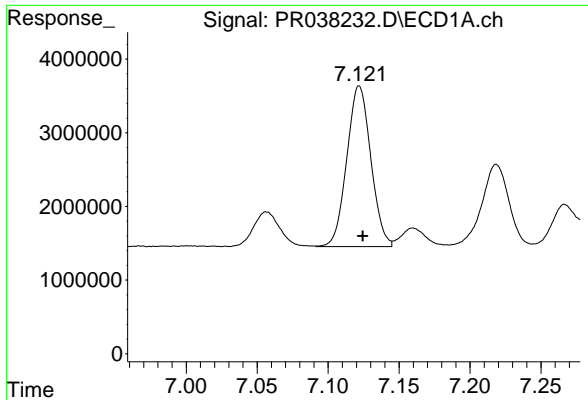
#33 AR-1260-3

R.T.: 6.654 min
 Delta R.T.: -0.002 min
 Response: 31065534
 Conc: 255.07 ng/ml m



#33 AR-1260-3

R.T.: 7.973 min
 Delta R.T.: -0.002 min
 Response: 51988937
 Conc: 244.25 ng/ml

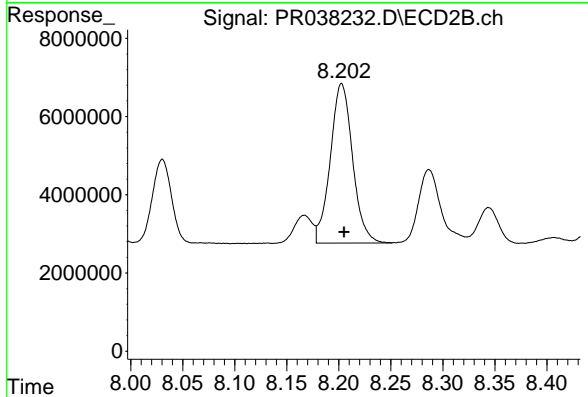


#34 AR-1260-4

R.T.: 7.121 min
 Delta R.T.: -0.003 min
 Response: 25691053
 Conc: 261.10 ng/ml m

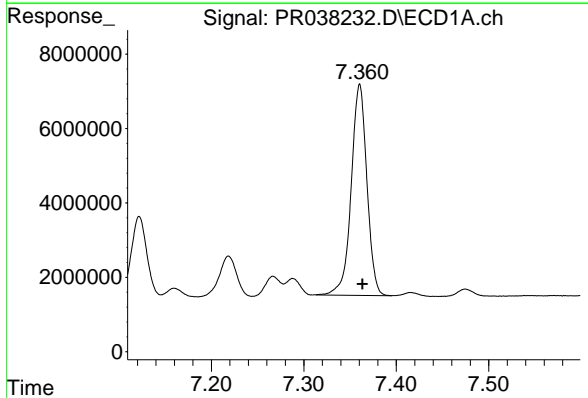
Instrument :
 ECD_R
ClientSampled :
 PB119922BS

Manual Integrations
APPROVED
 Ankita
 5/24/2019 3:12:30 PM



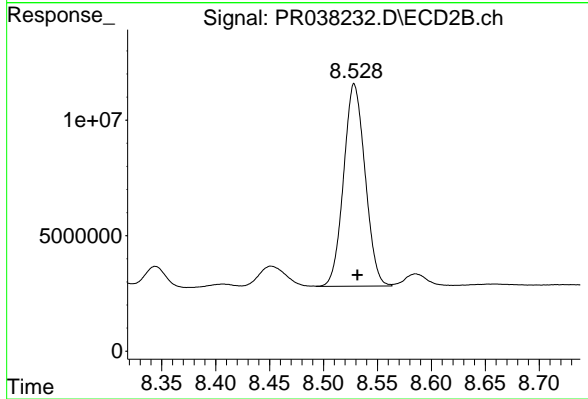
#34 AR-1260-4

R.T.: 8.203 min
 Delta R.T.: -0.002 min
 Response: 60777082
 Conc: 245.62 ng/ml



#35 AR-1260-5

R.T.: 7.360 min
 Delta R.T.: -0.003 min
 Response: 67004205
 Conc: 245.94 ng/ml



#35 AR-1260-5

R.T.: 8.528 min
 Delta R.T.: -0.003 min
 Response: 121280140
 Conc: 236.51 ng/ml