

Data Path : Z:\pestpcbsrv\HPCHEM1\ECD_R\Data\PR052319\
 Data File : PR038233.D
 Signal(s) : Signal #1: ECD1A.ch Signal #2: ECD2B.ch
 Acq On : 23 May 2019 18:36
 Operator : SM\MA
 Sample : PB119861BS
 Misc :
 ALS Vial : 142 Sample Multiplier: 1

Instrument :
 ECD_R
ClientSampleId :
 PB119861BS

Manual Integrations
APPROVED
 Ankita
 5/24/2019 3:12:31 PM

Integration File signal 1: autoint1.e
 Integration File signal 2: autoint2.e
 Quant Time: May 24 07:21:05 2019
 Quant Method : Z:\pestpcbsrv\HPCHEM1\ECD_R\Method\PR052319.M
 Quant Title : GC EXTRACTABLES
 QLast Update : Fri May 24 07:01:56 2019
 Response via : Initial Calibration
 Integrator: ChemStation

Volume Inj. : 2 µl
 Signal #1 Phase : ZB-MR2 Signal #2 Phase: ZB-MR2
 Signal #1 Info : 30Mx0.32mmx 0.50µ Signal #2 Info : 30M x 0.32mm x 0.25µm

Compound	RT#1	RT#2	Resp#1	Resp#2	ng/ml	ng/ml

System Monitoring Compounds						
1) SA Tetrachlo...	3.777	4.625	31502006	91717474	18.786	18.078
2) SA Decachlor...	8.756	10.378	38291024	85077678	19.739	19.288
Target Compounds						
3) L1 AR-1016-1	4.850	5.779	14332631	38008298	195.604	201.740
4) L1 AR-1016-2	4.869	5.802	19582268	50769866	197.153	186.931
5) L1 AR-1016-3	5.043	5.864	10355290	30804853	195.331m	187.596
6) L1 AR-1016-4	5.083	5.963	8278423	25364701	196.556m	190.808
7) L1 AR-1016-5	5.295	6.251	11383997	30535925	202.811m	225.914m
31) L7 AR-1260-1	6.315	7.364	19999922	44336637	186.740	185.893
32) L7 AR-1260-2	6.500	7.617	26899402	52103783	182.524	182.151
33) L7 AR-1260-3	6.653	7.972	23761768	39663786	195.102m	186.341
34) L7 AR-1260-4	7.122	8.202	19483270	46453783	198.006m	187.732
35) L7 AR-1260-5	7.360	8.529	51567579	92579115	189.277	180.538

(f)=RT Delta > 1/2 Window (#)=Amounts differ by > 25% (m)=manual int.

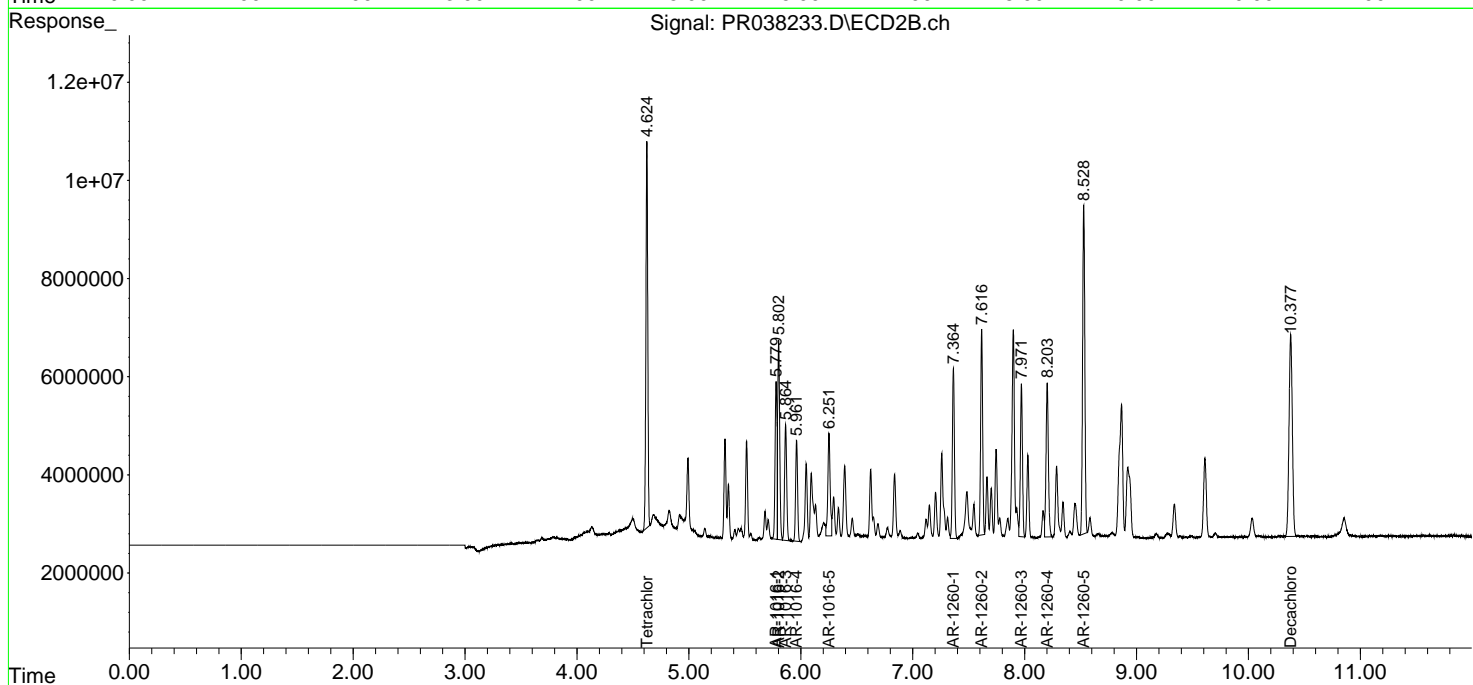
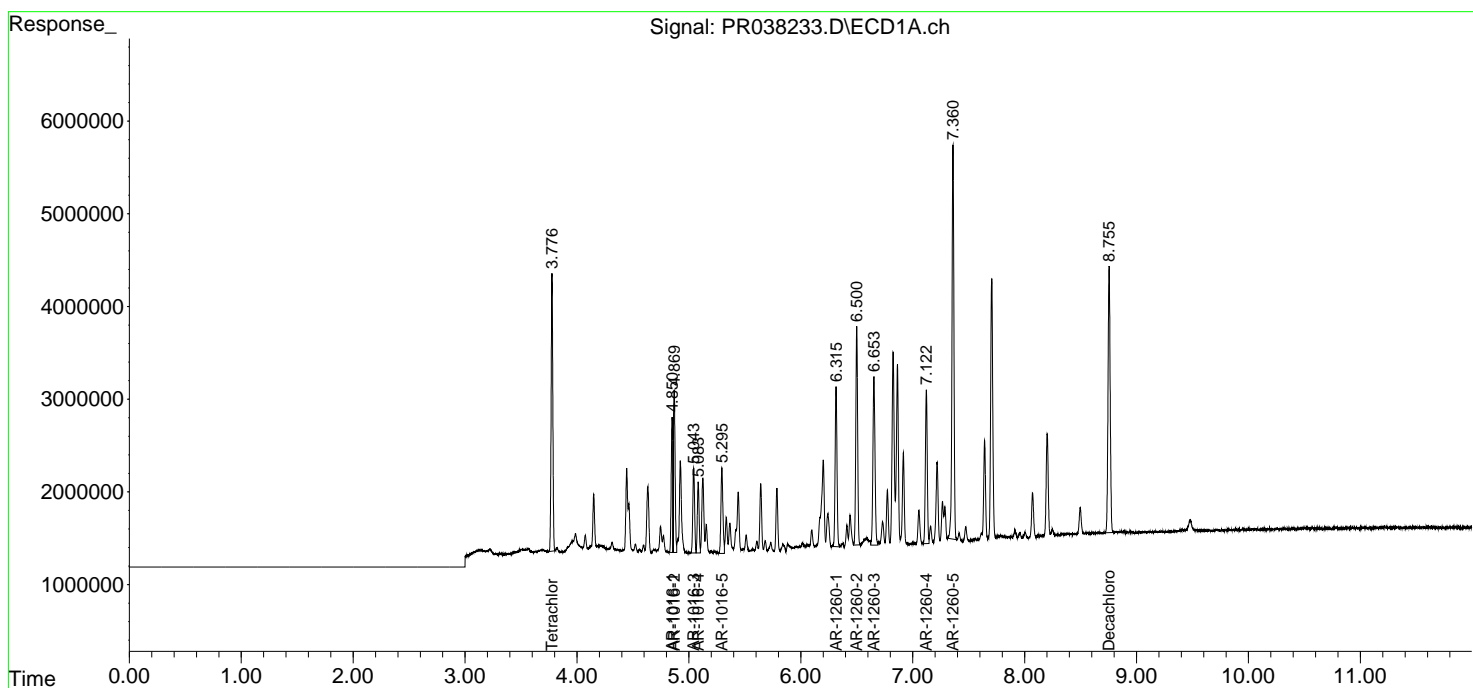
Data Path : Z:\pestpcbsrv\HPCHEM1\ECD_R\Data\PR052319\
 Data File : PR038233.D
 Signal(s) : Signal #1: ECD1A.ch Signal #2: ECD2B.ch
 Acq On : 23 May 2019 18:36
 Operator : SM\MA
 Sample : PB119861BS
 Misc :
 ALS Vial : 142 Sample Multiplier: 1

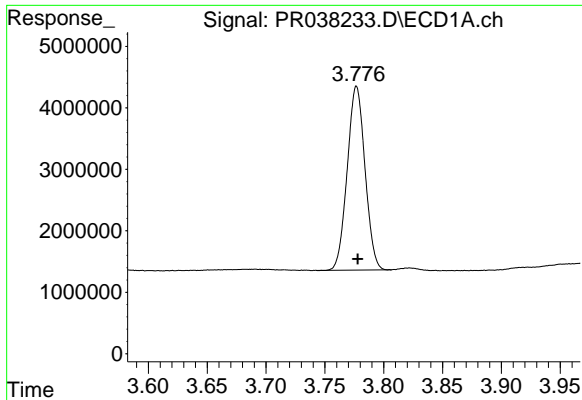
Instrument :
 ECD_R
Client Sampled :
 PB119861BS

Manual Integrations
APPROVED
 Ankita
 5/24/2019 3:12:31 PM

Integration File signal 1: autoint1.e
 Integration File signal 2: autoint2.e
 Quant Time: May 24 07:21:05 2019
 Quant Method : Z:\pestpcbsrv\HPCHEM1\ECD_R\Method\PR052319.M
 Quant Title : GC EXTRACTABLES
 QLast Update : Fri May 24 07:01:56 2019
 Response via : Initial Calibration
 Integrator: ChemStation

Volume Inj. : 2 µl
 Signal #1 Phase : ZB-MR1 Signal #2 Phase: ZB-MR2
 Signal #1 Info : 30Mx0.32mmx 0.50µ Signal #2 Info : 30M x 0.32mm x 0.25µm



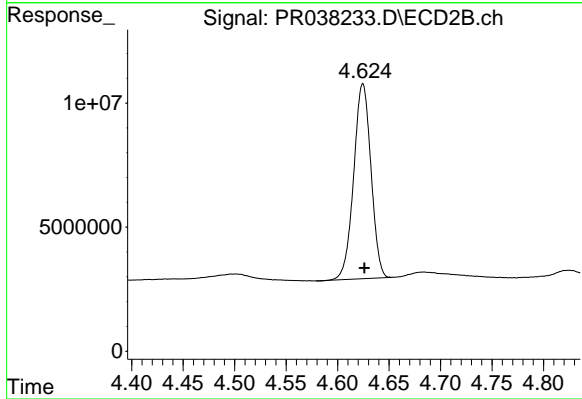


#1 Tetrachloro-m-xylene
R.T.: 3.777 min
Delta R.T.: -0.001 min
Response: 31502006
Conc: 18.79 ng/ml

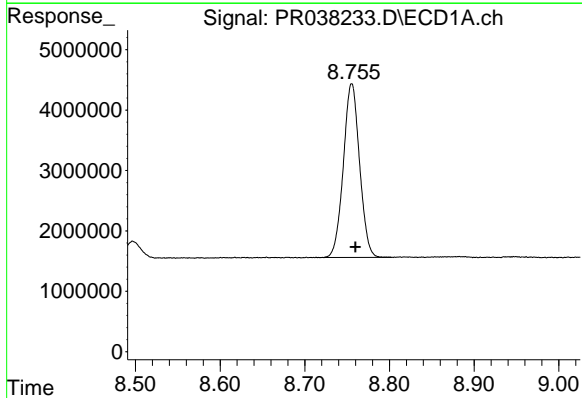
Instrument :
ECD_R
ClientSampled :
PB119861BS

Manual Integrations
APPROVED

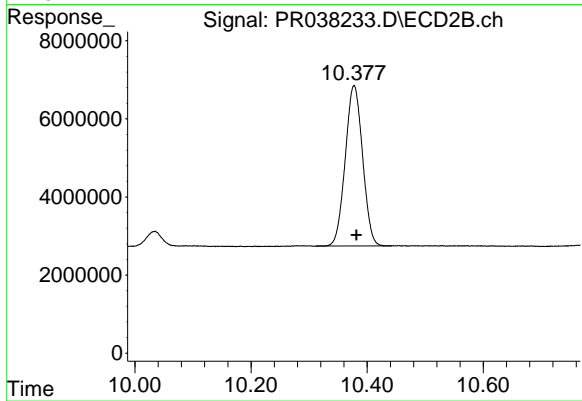
Ankita
5/24/2019 3:12:31 PM



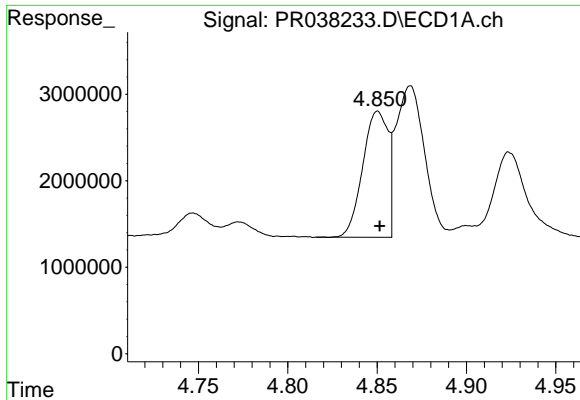
#1 Tetrachloro-m-xylene
R.T.: 4.625 min
Delta R.T.: -0.001 min
Response: 91717474
Conc: 18.08 ng/ml



#2 Decachlorobiphenyl
R.T.: 8.756 min
Delta R.T.: -0.004 min
Response: 38291024
Conc: 19.74 ng/ml



#2 Decachlorobiphenyl
R.T.: 10.378 min
Delta R.T.: -0.004 min
Response: 85077678
Conc: 19.29 ng/ml

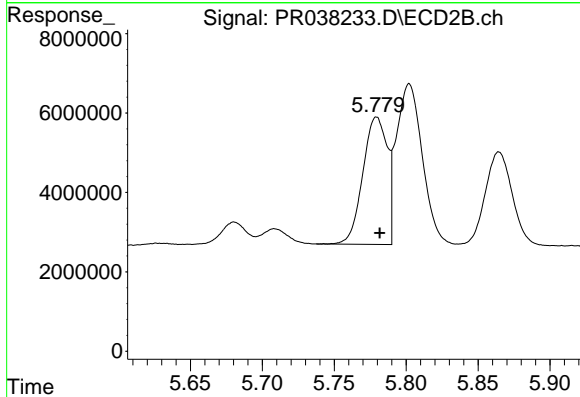


#3 AR-1016-1

R.T.: 4.850 min
 Delta R.T.: -0.001 min
 Response: 14332631
 Conc: 195.60 ng/ml

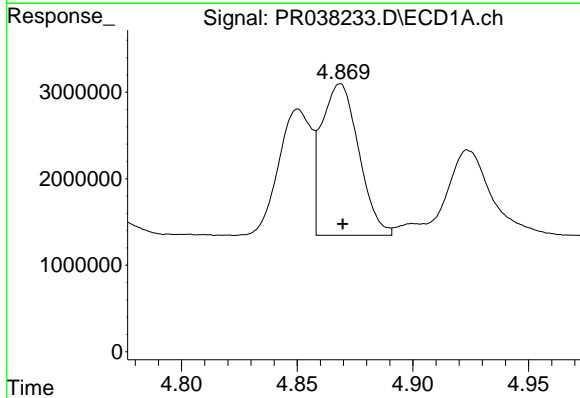
Instrument :
 ECD_R
ClientSampled :
 PB119861BS

Manual Integrations
APPROVED
 Ankita
 5/24/2019 3:12:31 PM



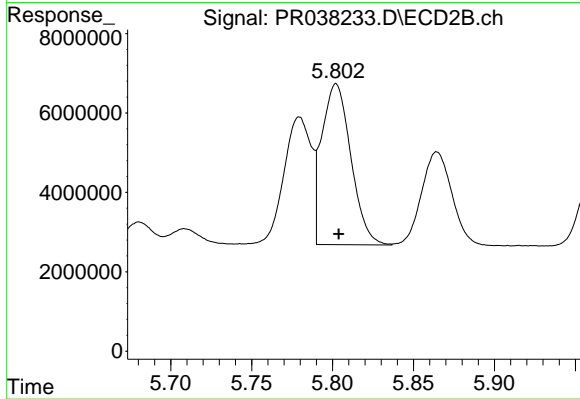
#3 AR-1016-1

R.T.: 5.779 min
 Delta R.T.: -0.002 min
 Response: 38008298
 Conc: 201.74 ng/ml



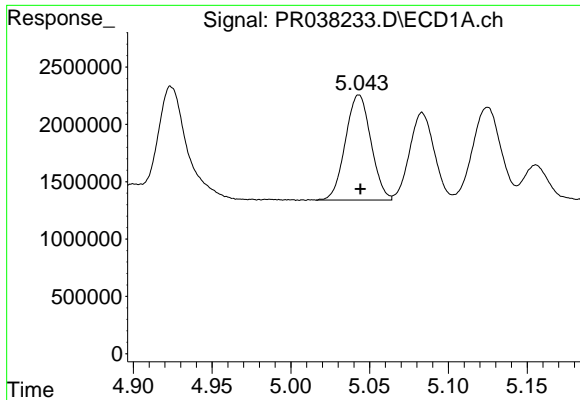
#4 AR-1016-2

R.T.: 4.869 min
 Delta R.T.: 0.000 min
 Response: 19582268
 Conc: 197.15 ng/ml



#4 AR-1016-2

R.T.: 5.802 min
 Delta R.T.: -0.002 min
 Response: 50769866
 Conc: 186.93 ng/ml

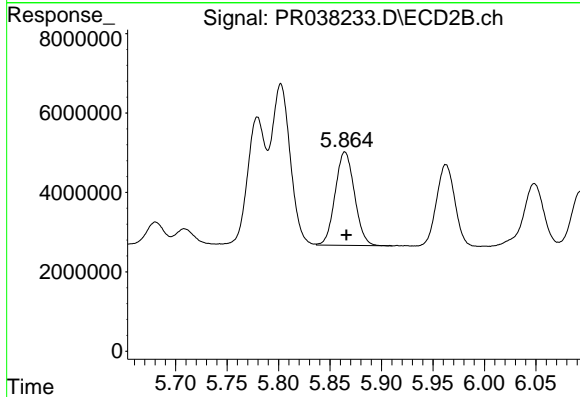


#5 AR-1016-3

R.T.: 5.043 min
 Delta R.T.: 0.000 min
 Response: 10355290
 Conc: 195.33 ng/ml m

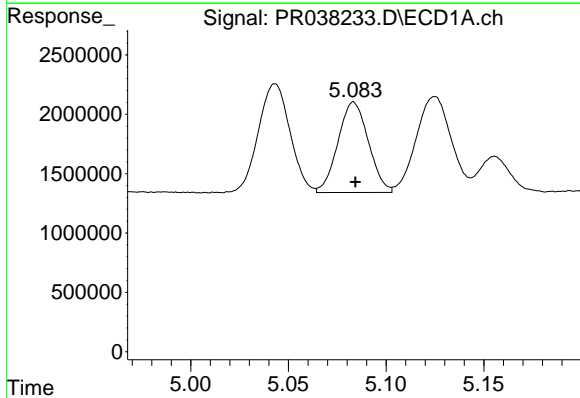
Instrument :
 ECD_R
ClientSampled :
 PB119861BS

Manual Integrations
APPROVED
 Ankita
 5/24/2019 3:12:31 PM



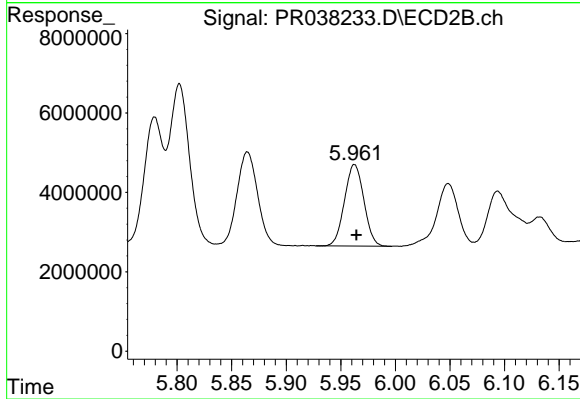
#5 AR-1016-3

R.T.: 5.864 min
 Delta R.T.: -0.002 min
 Response: 30804853
 Conc: 187.60 ng/ml



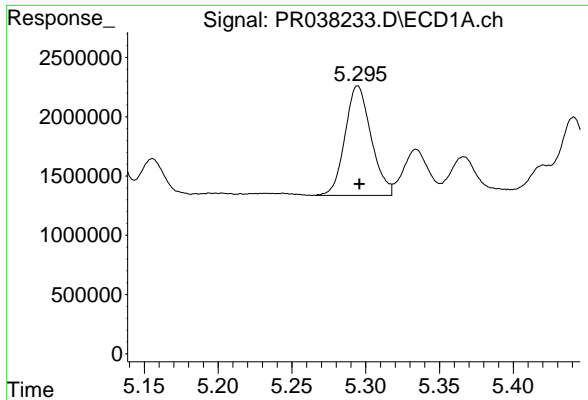
#6 AR-1016-4

R.T.: 5.083 min
 Delta R.T.: -0.001 min
 Response: 8278423
 Conc: 196.56 ng/ml m



#6 AR-1016-4

R.T.: 5.963 min
 Delta R.T.: -0.002 min
 Response: 25364701
 Conc: 190.81 ng/ml

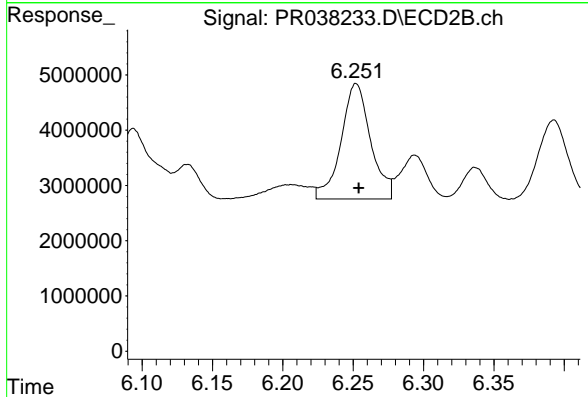


#7 AR-1016-5

R.T.: 5.295 min
 Delta R.T.: -0.001 min
 Response: 11383997
 Conc: 202.81 ng/ml m

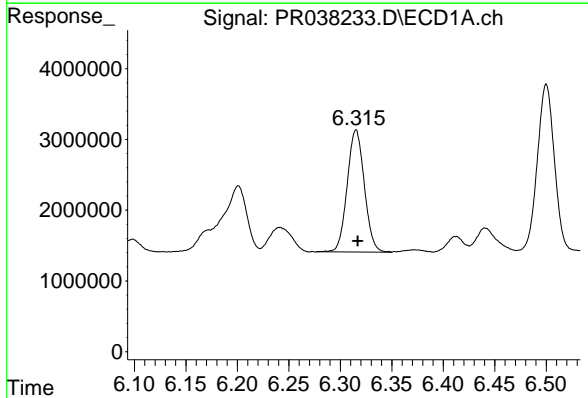
Instrument :
 ECD_R
ClientSampled :
 PB119861BS

Manual Integrations
APPROVED
 Ankita
 5/24/2019 3:12:31 PM



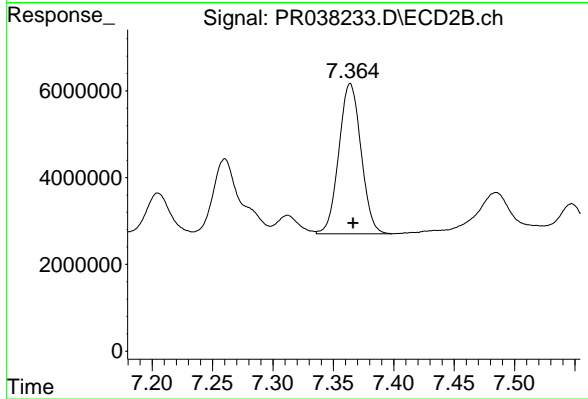
#7 AR-1016-5

R.T.: 6.251 min
 Delta R.T.: -0.003 min
 Response: 30535925
 Conc: 225.91 ng/ml m



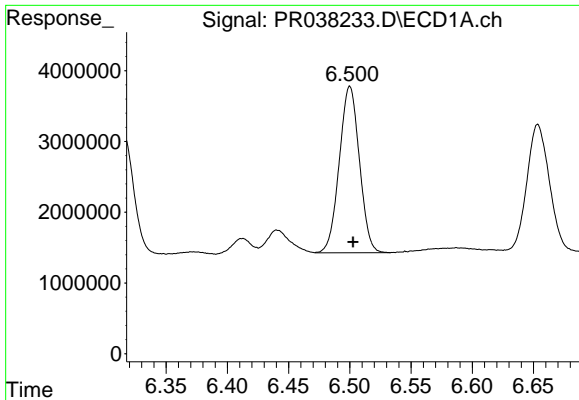
#31 AR-1260-1

R.T.: 6.315 min
 Delta R.T.: -0.002 min
 Response: 19999922
 Conc: 186.74 ng/ml



#31 AR-1260-1

R.T.: 7.364 min
 Delta R.T.: -0.002 min
 Response: 44336637
 Conc: 185.89 ng/ml

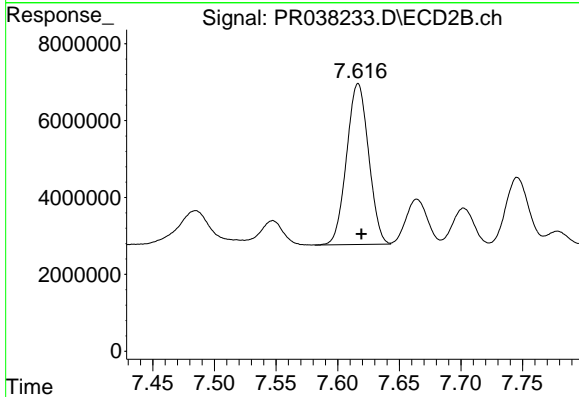


#32 AR-1260-2

R.T.: 6.500 min
 Delta R.T.: -0.003 min
 Response: 26899402
 Conc: 182.52 ng/ml

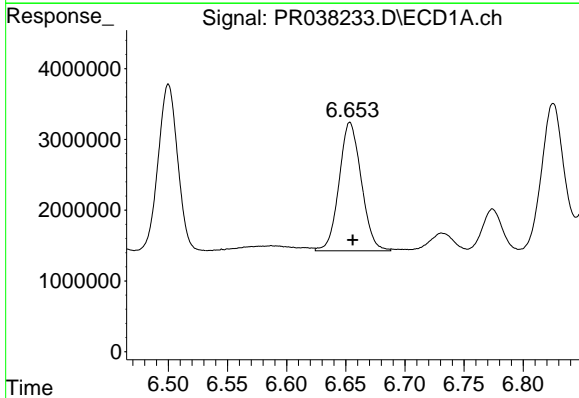
Instrument :
 ECD_R
ClientSampled :
 PB119861BS

Manual Integrations
APPROVED
 Ankita
 5/24/2019 3:12:31 PM



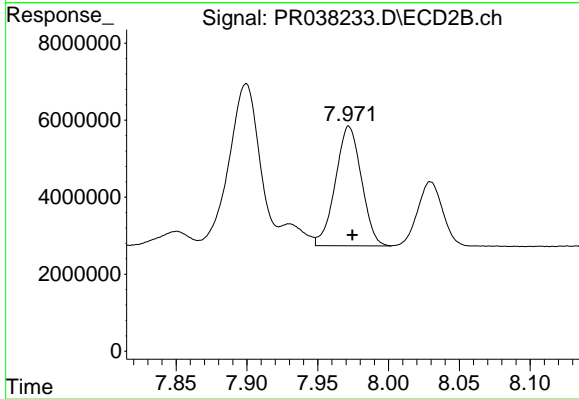
#32 AR-1260-2

R.T.: 7.617 min
 Delta R.T.: -0.003 min
 Response: 52103783
 Conc: 182.15 ng/ml



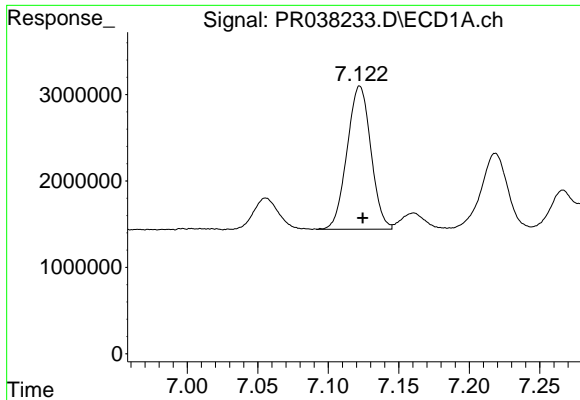
#33 AR-1260-3

R.T.: 6.653 min
 Delta R.T.: -0.003 min
 Response: 23761768
 Conc: 195.10 ng/ml m



#33 AR-1260-3

R.T.: 7.972 min
 Delta R.T.: -0.003 min
 Response: 39663786
 Conc: 186.34 ng/ml

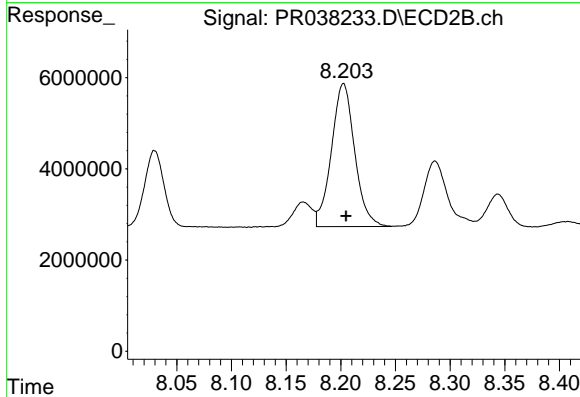


#34 AR-1260-4

R.T.: 7.122 min
 Delta R.T.: -0.003 min
 Response: 19483270
 Conc: 198.01 ng/ml m

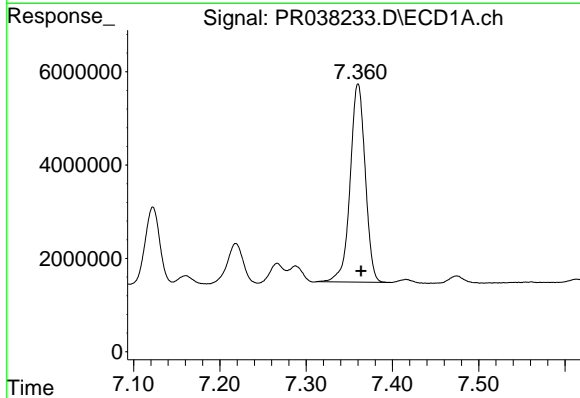
Instrument :
 ECD_R
ClientSampled :
 PB119861BS

Manual Integrations
APPROVED
 Ankita
 5/24/2019 3:12:31 PM



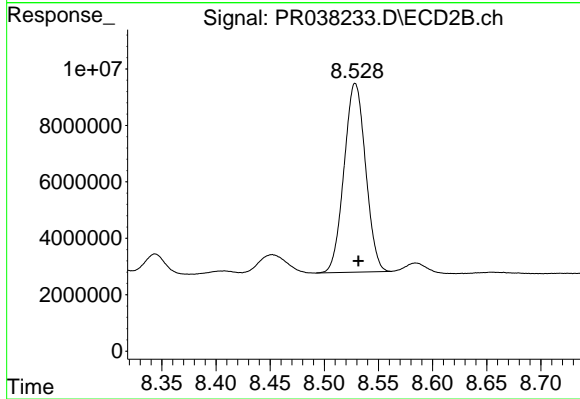
#34 AR-1260-4

R.T.: 8.202 min
 Delta R.T.: -0.002 min
 Response: 46453783
 Conc: 187.73 ng/ml



#35 AR-1260-5

R.T.: 7.360 min
 Delta R.T.: -0.003 min
 Response: 51567579
 Conc: 189.28 ng/ml



#35 AR-1260-5

R.T.: 8.529 min
 Delta R.T.: -0.003 min
 Response: 92579115
 Conc: 180.54 ng/ml