

Data Path : Z:\pestpcbsrv\HPCHEM1\ECD_R\Data\PR052319\
 Data File : PR038247.D
 Signal(s) : Signal #1: ECD1A.ch Signal #2: ECD2B.ch
 Acq On : 23 May 2019 21:59
 Operator : SM\MA
 Sample : K2951-13MS
 Misc :
 ALS Vial : 13 Sample Multiplier: 1

Instrument :
 ECD_R
ClientSampleId :
 TP-15-SMS

Manual Integrations
APPROVED
 Ankita
 5/24/2019 3:12:55 PM

Integration File signal 1: autoint1.e
 Integration File signal 2: autoint2.e
 Quant Time: May 24 07:27:26 2019
 Quant Method : Z:\pestpcbsrv\HPCHEM1\ECD_R\Method\PR052319.M
 Quant Title : GC EXTRACTABLES
 QLast Update : Fri May 24 07:01:56 2019
 Response via : Initial Calibration
 Integrator: ChemStation

Volume Inj. : 2 µl
 Signal #1 Phase : ZB-MR2 Signal #2 Phase: ZB-MR2
 Signal #1 Info : 30Mx0.32mmx 0.50µ Signal #2 Info : 30M x 0.32mm x 0.25µm

Compound	RT#1	RT#2	Resp#1	Resp#2	ng/ml	ng/ml

System Monitoring Compounds						
1) SA Tetrachlo...	3.778	4.626	44662452	126.9E6	26.634	25.015
2) SA Decachlor...	8.756	10.378	19152326	47392670	9.873	10.744
Target Compounds						
3) L1 AR-1016-1	4.851	5.781	9407454	24574433	128.388	130.436
4) L1 AR-1016-2	4.869	5.804	12472034	33735860	125.567	124.213
5) L1 AR-1016-3	5.042	5.865	7405944	20025545	139.697m	121.952
6) L1 AR-1016-4	5.084	5.964	6523880	17428296	154.897m	131.106
7) L1 AR-1016-5	5.296	6.253	8799780	17737275	156.772m	131.226m
31) L7 AR-1260-1	6.316	7.368	11573615	30222107	108.063	126.714
32) L7 AR-1260-2	6.497	7.617	22207202	27307663	150.685m	95.466 #
33) L7 AR-1260-3	6.653	7.973	10524867	18807305	86.417m	88.357
34) L7 AR-1260-4	7.119	8.203	15841157	21053881	160.992m	85.084 #
35) L7 AR-1260-5	7.360	8.529	16297300	33746008	59.819	65.808

(f)=RT Delta > 1/2 Window (#)=Amounts differ by > 25% (m)=manual int.

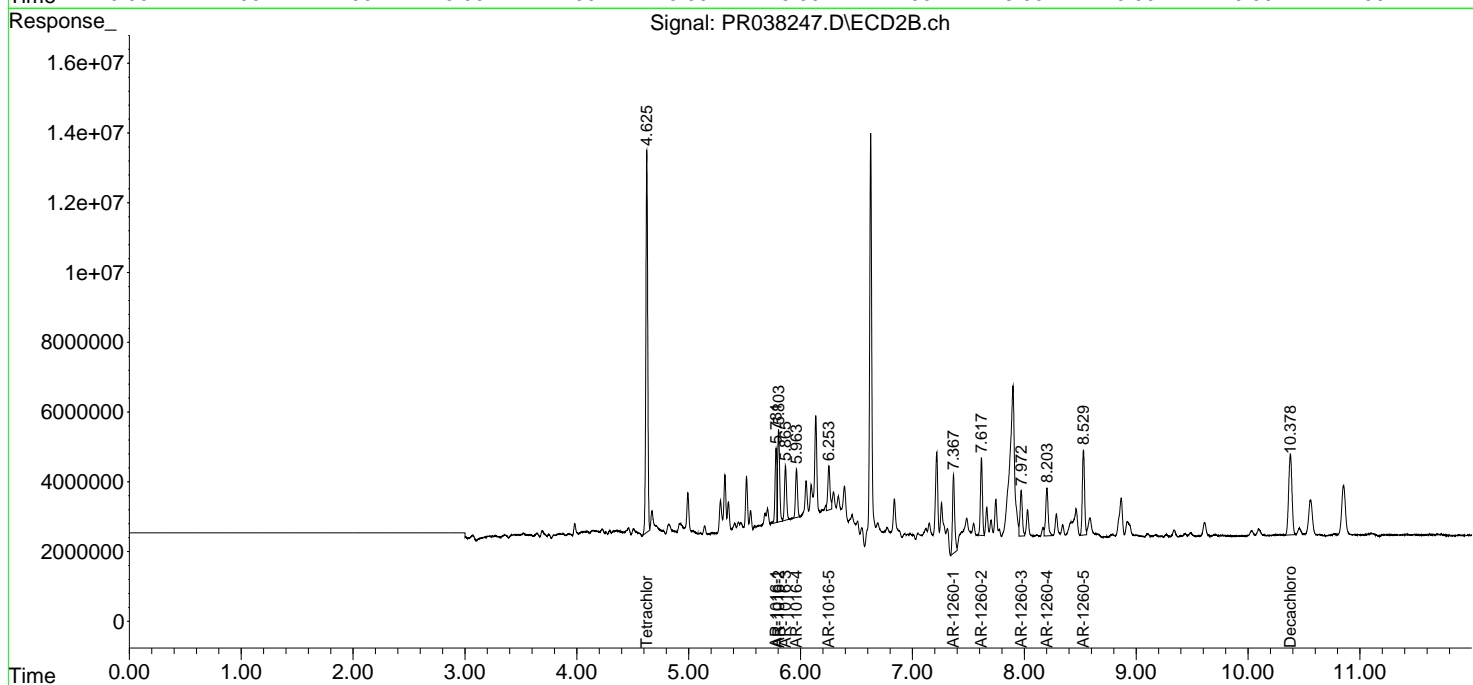
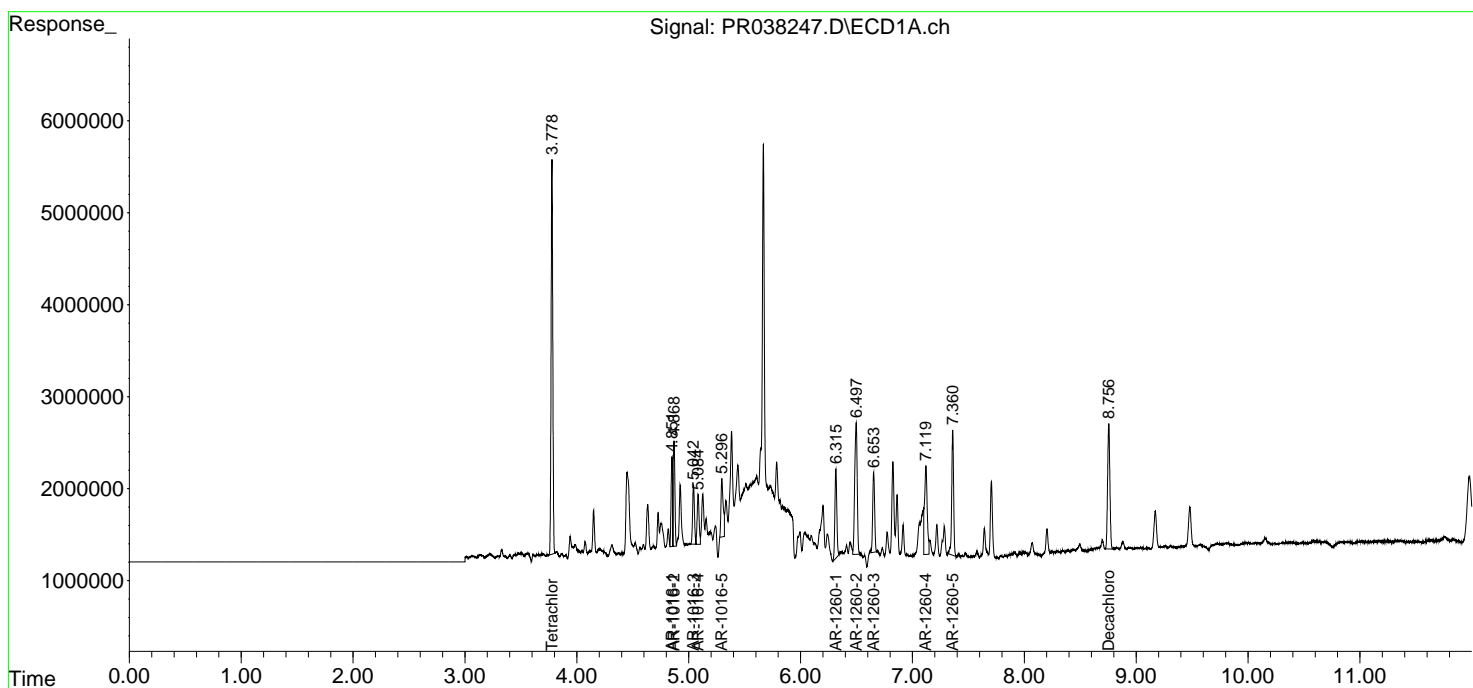
Data Path : Z:\pestpcbsrv\HPCHEM1\ECD_R\Data\PR052319\
 Data File : PR038247.D
 Signal(s) : Signal #1: ECD1A.ch Signal #2: ECD2B.ch
 Acq On : 23 May 2019 21:59
 Operator : SM\MA
 Sample : K2951-13MS
 Misc :
 ALS Vial : 13 Sample Multiplier: 1

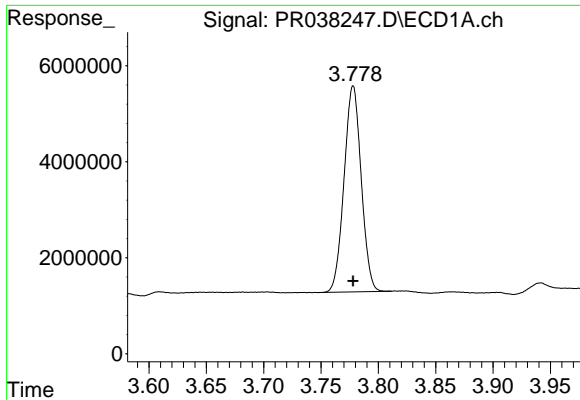
Instrument :
 ECD_R
Client Sampled :
 TP-15-SMS

Manual Integrations
APPROVED
 Ankita
 5/24/2019 3:12:55 PM

Integration File signal 1: autoint1.e
 Integration File signal 2: autoint2.e
 Quant Time: May 24 07:27:26 2019
 Quant Method : Z:\pestpcbsrv\HPCHEM1\ECD_R\Method\PR052319.M
 Quant Title : GC EXTRACTABLES
 QLast Update : Fri May 24 07:01:56 2019
 Response via : Initial Calibration
 Integrator: ChemStation

Volume Inj. : 2 µl
 Signal #1 Phase : ZB-MR1 Signal #2 Phase: ZB-MR2
 Signal #1 Info : 30Mx0.32mmx 0.50µ Signal #2 Info : 30M x 0.32mm x 0.25µm

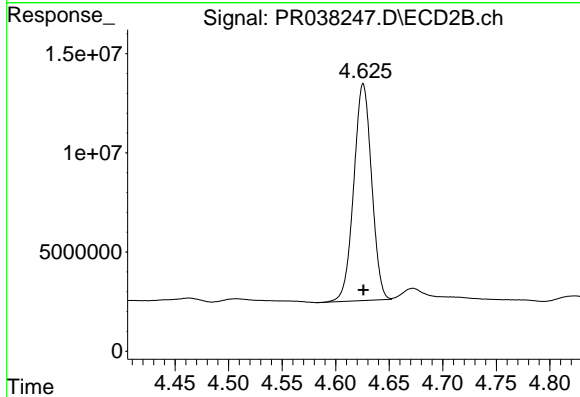




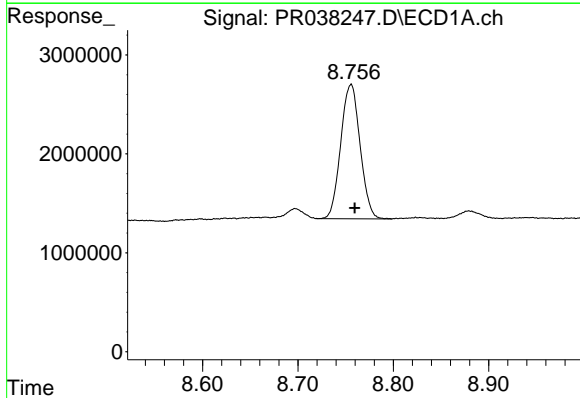
#1 Tetrachloro-m-xylene
 R.T.: 3.778 min
 Delta R.T.: 0.000 min
 Response: 44662452
 Conc: 26.63 ng/ml

Instrument :
 ECD_R
ClientSampled :
 TP-15-SMS

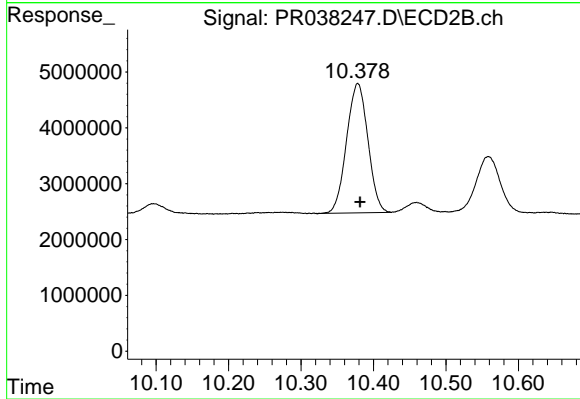
Manual Integrations
APPROVED
 Ankita
 5/24/2019 3:12:55 PM



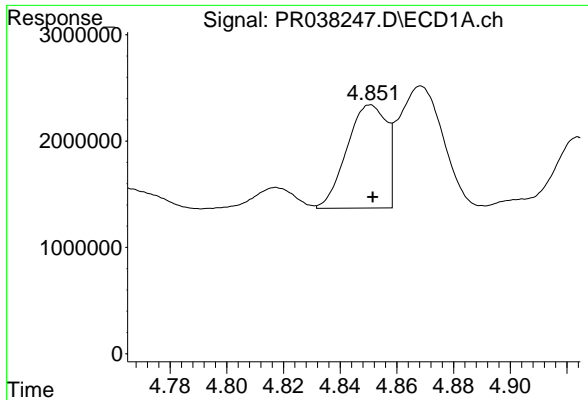
#1 Tetrachloro-m-xylene
 R.T.: 4.626 min
 Delta R.T.: 0.000 min
 Response: 126914108
 Conc: 25.02 ng/ml



#2 Decachlorobiphenyl
 R.T.: 8.756 min
 Delta R.T.: -0.004 min
 Response: 19152326
 Conc: 9.87 ng/ml



#2 Decachlorobiphenyl
 R.T.: 10.378 min
 Delta R.T.: -0.003 min
 Response: 47392670
 Conc: 10.74 ng/ml

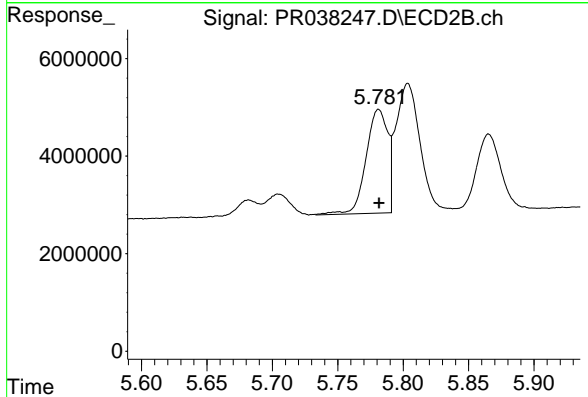


#3 AR-1016-1

R.T.: 4.851 min
 Delta R.T.: 0.000 min
 Response: 9407454
 Conc: 128.39 ng/ml

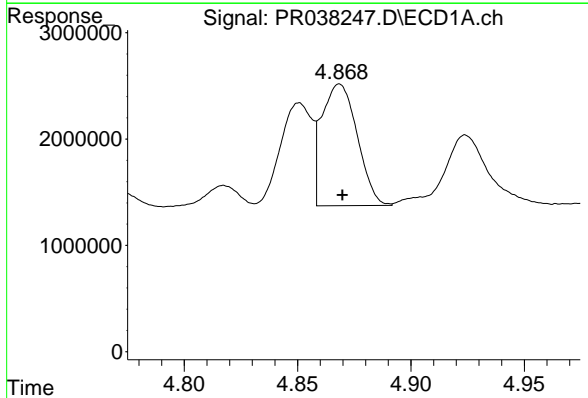
Instrument :
 ECD_R
ClientSampled :
 TP-15-SMS

Manual Integrations
APPROVED
 Ankita
 5/24/2019 3:12:55 PM



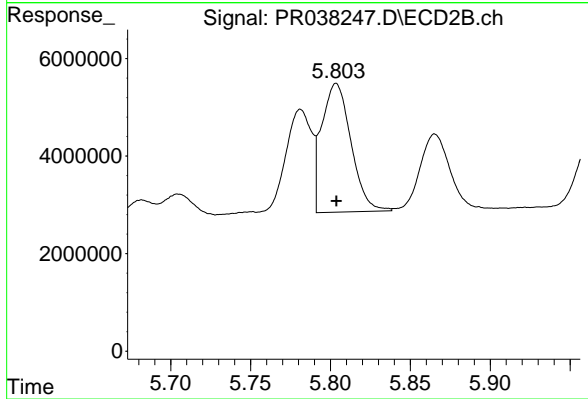
#3 AR-1016-1

R.T.: 5.781 min
 Delta R.T.: 0.000 min
 Response: 24574433
 Conc: 130.44 ng/ml



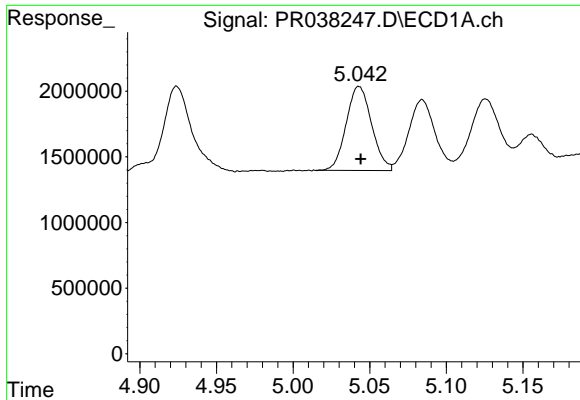
#4 AR-1016-2

R.T.: 4.869 min
 Delta R.T.: -0.001 min
 Response: 12472034
 Conc: 125.57 ng/ml



#4 AR-1016-2

R.T.: 5.804 min
 Delta R.T.: 0.000 min
 Response: 33735860
 Conc: 124.21 ng/ml

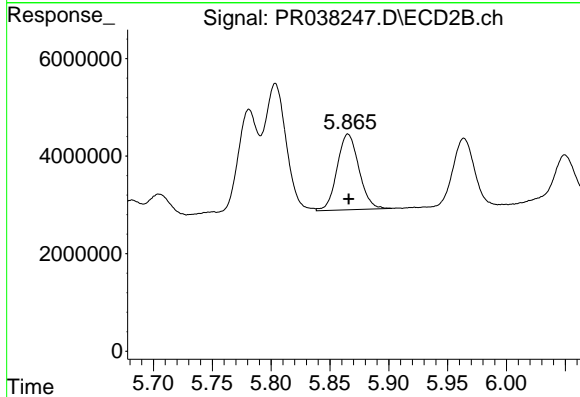


#5 AR-1016-3

R.T.: 5.042 min
 Delta R.T.: -0.002 min
 Response: 7405944
 Conc: 139.70 ng/ml m

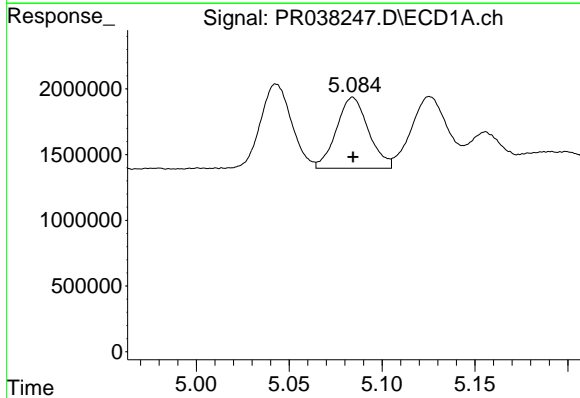
Instrument :
 ECD_R
ClientSampled :
 TP-15-SMS

Manual Integrations
APPROVED
 Ankita
 5/24/2019 3:12:55 PM



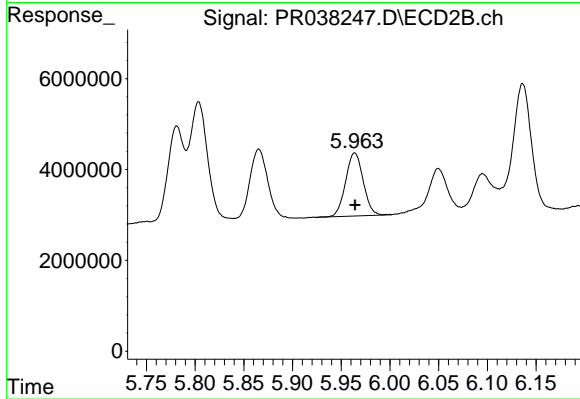
#5 AR-1016-3

R.T.: 5.865 min
 Delta R.T.: 0.000 min
 Response: 20025545
 Conc: 121.95 ng/ml



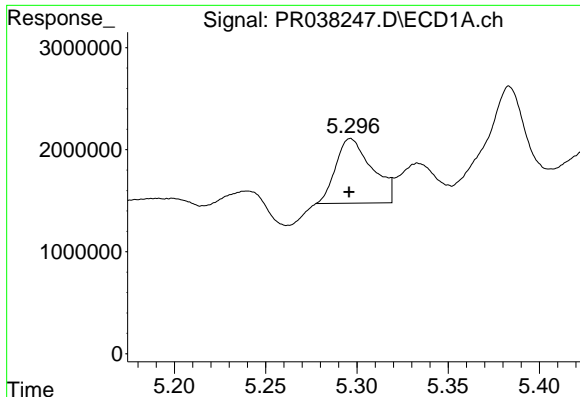
#6 AR-1016-4

R.T.: 5.084 min
 Delta R.T.: 0.000 min
 Response: 6523880
 Conc: 154.90 ng/ml m



#6 AR-1016-4

R.T.: 5.964 min
 Delta R.T.: 0.000 min
 Response: 17428296
 Conc: 131.11 ng/ml

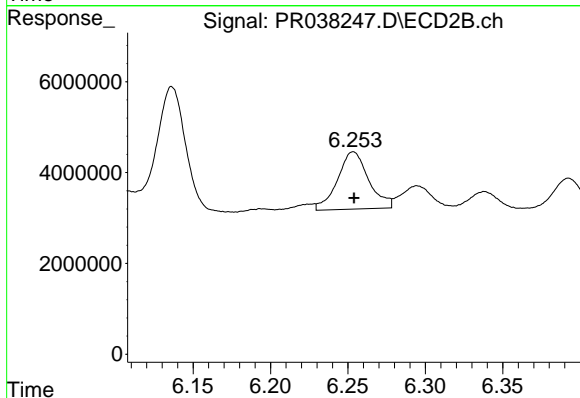


#7 AR-1016-5

R.T.: 5.296 min
 Delta R.T.: 0.000 min
 Response: 8799780
 Conc: 156.77 ng/ml m

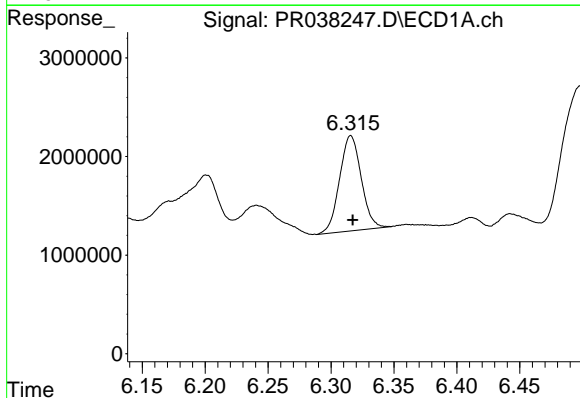
Instrument :
 ECD_R
ClientSampled :
 TP-15-SMS

Manual Integrations
APPROVED
 Ankita
 5/24/2019 3:12:55 PM



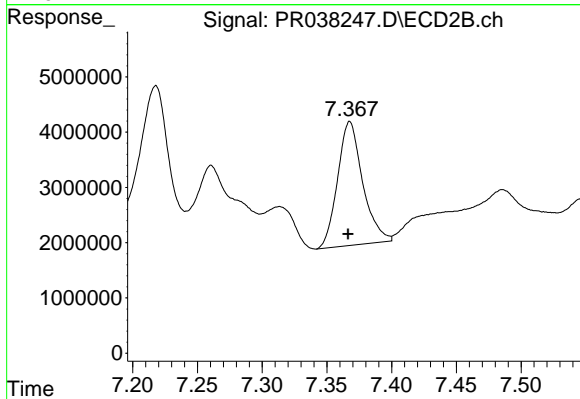
#7 AR-1016-5

R.T.: 6.253 min
 Delta R.T.: 0.000 min
 Response: 17737275
 Conc: 131.23 ng/ml m



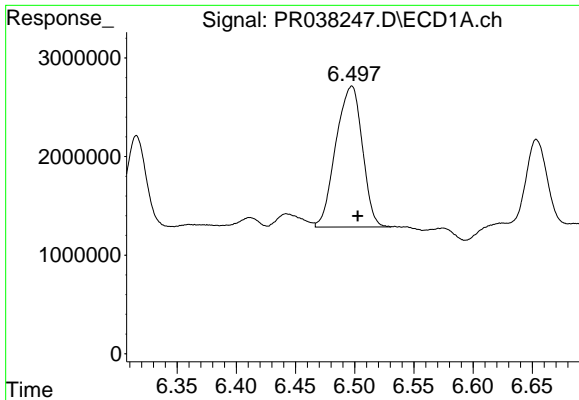
#31 AR-1260-1

R.T.: 6.316 min
 Delta R.T.: -0.001 min
 Response: 11573615
 Conc: 108.06 ng/ml



#31 AR-1260-1

R.T.: 7.368 min
 Delta R.T.: 0.001 min
 Response: 30222107
 Conc: 126.71 ng/ml

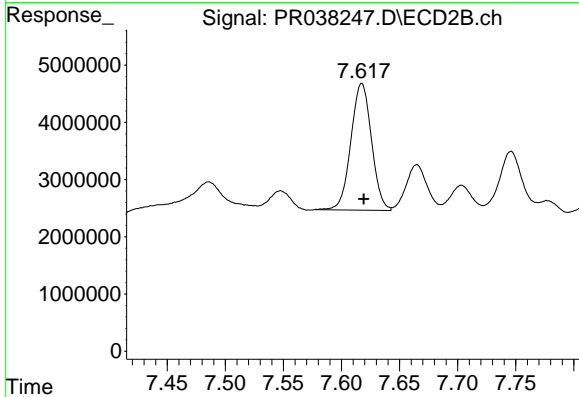


#32 AR-1260-2

R.T.: 6.497 min
 Delta R.T.: -0.005 min
 Response: 22207202
 Conc: 150.69 ng/ml m

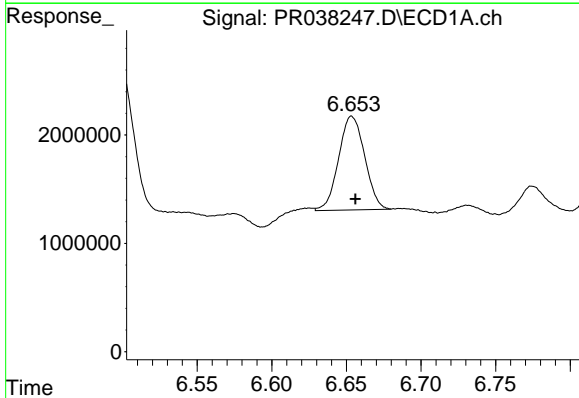
Instrument :
 ECD_R
ClientSampled :
 TP-15-SMS

Manual Integrations
APPROVED
 Ankita
 5/24/2019 3:12:55 PM



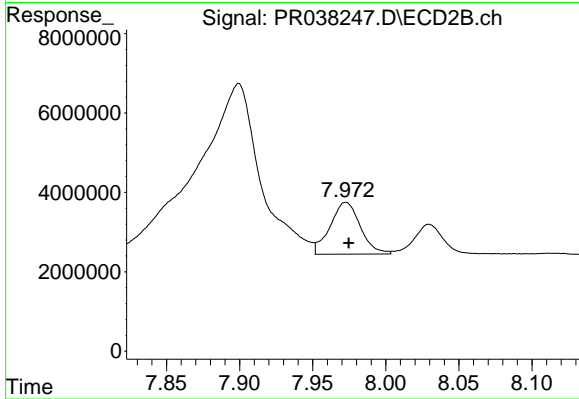
#32 AR-1260-2

R.T.: 7.617 min
 Delta R.T.: -0.002 min
 Response: 27307663
 Conc: 95.47 ng/ml



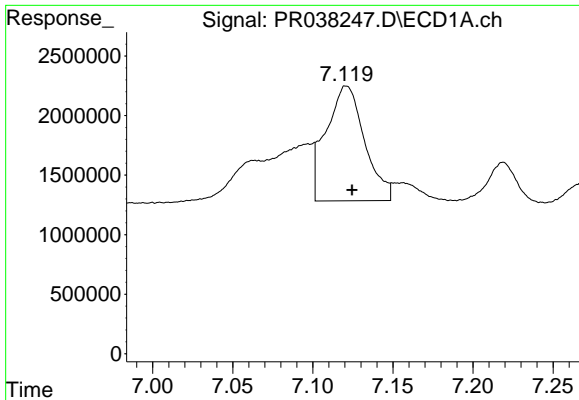
#33 AR-1260-3

R.T.: 6.653 min
 Delta R.T.: -0.003 min
 Response: 10524867
 Conc: 86.42 ng/ml m



#33 AR-1260-3

R.T.: 7.973 min
 Delta R.T.: -0.002 min
 Response: 18807305
 Conc: 88.36 ng/ml

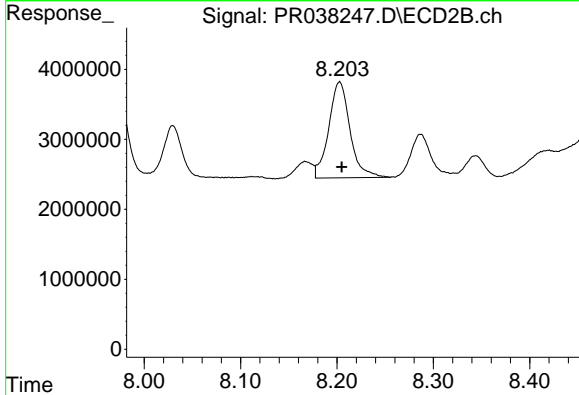


#34 AR-1260-4

R.T.: 7.119 min
 Delta R.T.: -0.005 min
 Response: 15841157
 Conc: 160.99 ng/ml m

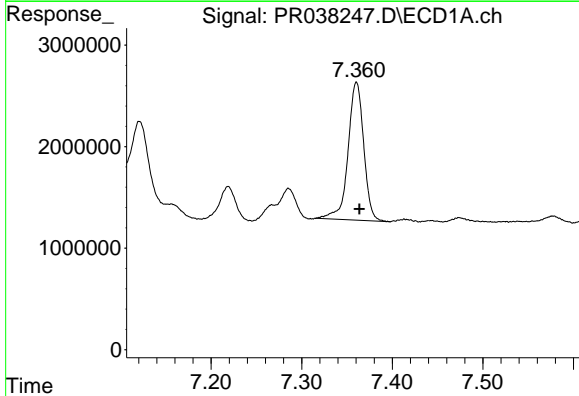
Instrument :
 ECD_R
ClientSampled :
 TP-15-SMS

Manual Integrations
APPROVED
 Ankita
 5/24/2019 3:12:55 PM



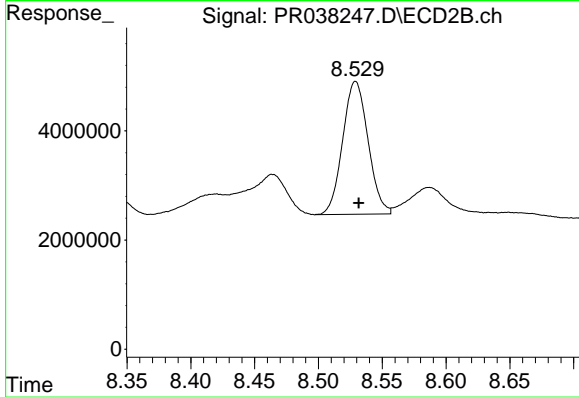
#34 AR-1260-4

R.T.: 8.203 min
 Delta R.T.: -0.002 min
 Response: 21053881
 Conc: 85.08 ng/ml



#35 AR-1260-5

R.T.: 7.360 min
 Delta R.T.: -0.003 min
 Response: 16297300
 Conc: 59.82 ng/ml



#35 AR-1260-5

R.T.: 8.529 min
 Delta R.T.: -0.003 min
 Response: 33746008
 Conc: 65.81 ng/ml