

Data Path : Z:\pestpcbsrv\HPCHEM1\ECD\_R\Data\PR052319\  
 Data File : PR038250.D  
 Signal(s) : Signal #1: ECD1A.ch Signal #2: ECD2B.ch  
 Acq On : 23 May 2019 22:42  
 Operator : SM\MA  
 Sample : AR1660CCC500  
 Misc :  
 ALS Vial : 3 Sample Multiplier: 1

**Instrument :**  
 ECD\_R  
**ClientSampleId :**  
 AR1660CCC500

**Manual Integrations**  
**APPROVED**  
 Ankita  
 5/24/2019 3:12:57 PM

Integration File signal 1: autoint1.e  
 Integration File signal 2: autoint2.e  
 Quant Time: May 24 07:28:59 2019  
 Quant Method : Z:\pestpcbsrv\HPCHEM1\ECD\_R\Method\PR052319.M  
 Quant Title : GC EXTRACTABLES  
 QLast Update : Fri May 24 07:01:56 2019  
 Response via : Initial Calibration  
 Integrator: ChemStation

Volume Inj. : 2 µl  
 Signal #1 Phase : ZB-MR2 Signal #2 Phase: ZB-MR2  
 Signal #1 Info : 30Mx0.32mmx 0.50µ Signal #2 Info : 30M x 0.32mm x 0.25µm

Compound	RT#1	RT#2	Resp#1	Resp#2	ng/ml	ng/ml
-----						
System Monitoring Compounds						
1) SA Tetrachlo...	3.778	4.626	106.3E6	311.9E6	63.372	61.473
2) SA Decachlor...	8.754	10.378	82482007	195.4E6	42.519	44.310
Target Compounds						
3) L1 AR-1016-1	4.850	5.781	43673093	109.3E6	596.028	579.983
4) L1 AR-1016-2	4.869	5.803	59245070	154.5E6	596.474m	568.753
5) L1 AR-1016-3	5.043	5.865	31206232	90724128	588.639	552.494
6) L1 AR-1016-4	5.083	5.964	24224724	75563954	575.171	568.435
7) L1 AR-1016-5	5.294	6.253	31254850	71537795	556.819	529.258
31) L7 AR-1260-1	6.315	7.365	51381697	108.6E6	479.754	455.511
32) L7 AR-1260-2	6.500	7.617	67855722	128.2E6	460.429	448.247
33) L7 AR-1260-3	6.654	7.973	57101014	97180974	468.842	456.558
34) L7 AR-1260-4	7.121	8.203	45718103	113.4E6	464.627	458.233
35) L7 AR-1260-5	7.360	8.530	123.4E6	232.2E6	452.994	452.792

(f)=RT Delta > 1/2 Window (#)=Amounts differ by > 25% (m)=manual int.

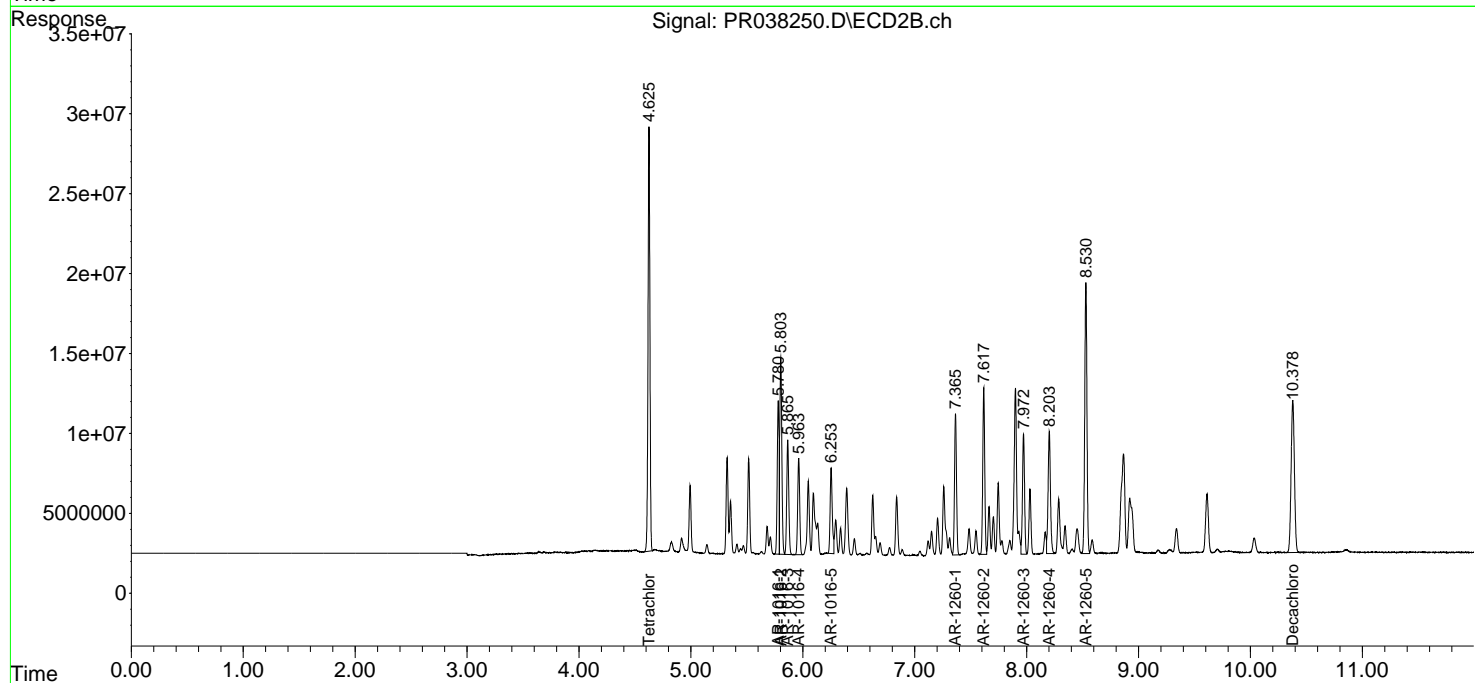
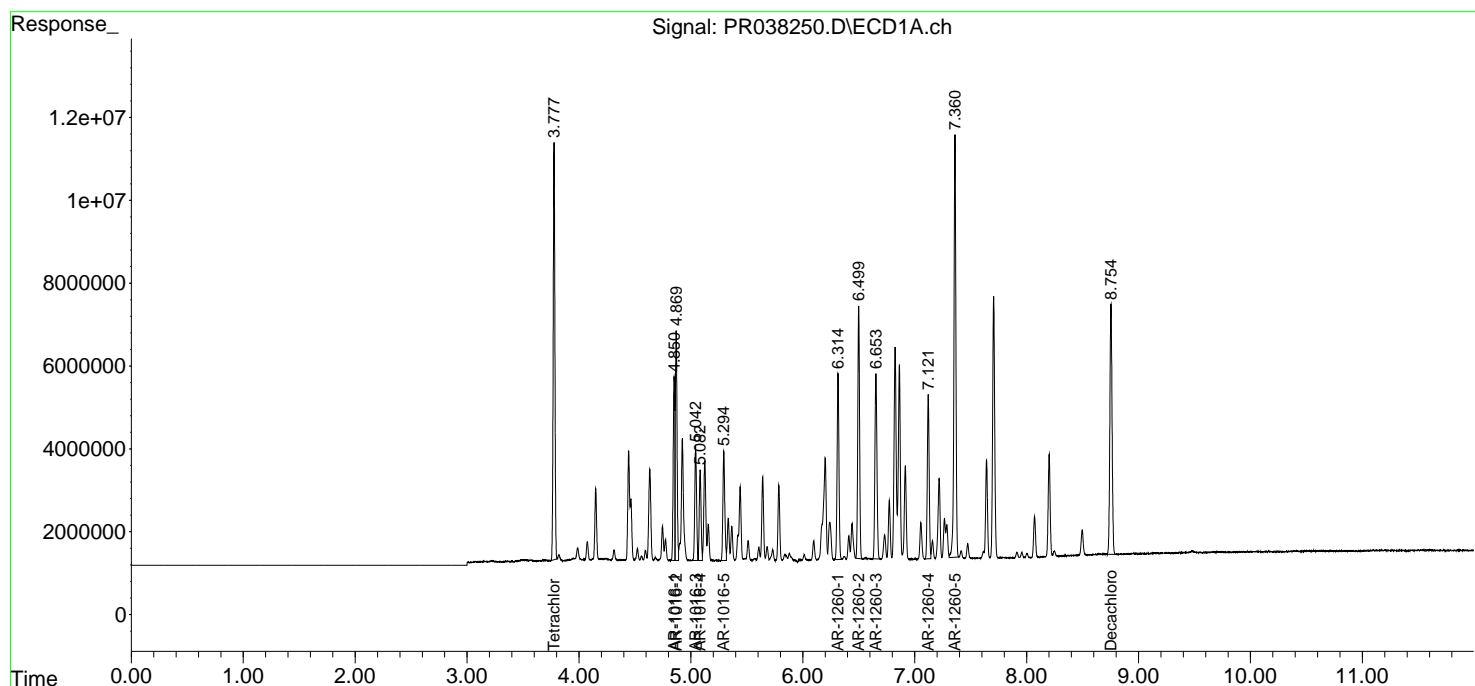
Data Path : Z:\pestpcbsrv\HPCHEM1\ECD\_R\Data\PR052319\  
 Data File : PR038250.D  
 Signal(s) : Signal #1: ECD1A.ch Signal #2: ECD2B.ch  
 Acq On : 23 May 2019 22:42  
 Operator : SM\MA  
 Sample : AR1660CCC500  
 Misc :  
 ALS Vial : 3 Sample Multiplier: 1

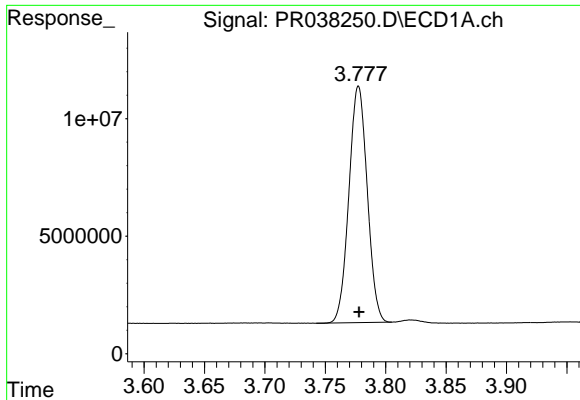
**Instrument :**  
 ECD\_R  
**Client Sampled :**  
 AR1660CCC500

**Manual Integrations**  
**APPROVED**  
 Ankita  
 5/24/2019 3:12:57 PM

Integration File signal 1: autoint1.e  
 Integration File signal 2: autoint2.e  
 Quant Time: May 24 07:28:59 2019  
 Quant Method : Z:\pestpcbsrv\HPCHEM1\ECD\_R\Method\PR052319.M  
 Quant Title : GC EXTRACTABLES  
 QLast Update : Fri May 24 07:01:56 2019  
 Response via : Initial Calibration  
 Integrator: ChemStation

Volume Inj. : 2 µl  
 Signal #1 Phase : ZB-MR1 Signal #2 Phase: ZB-MR2  
 Signal #1 Info : 30Mx0.32mmx 0.50µm Signal #2 Info : 30M x 0.32mm x 0.25µm

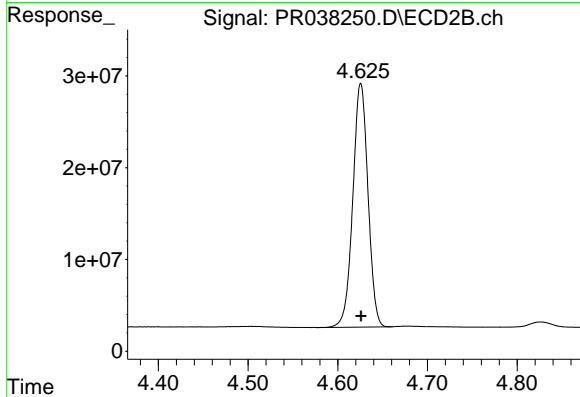




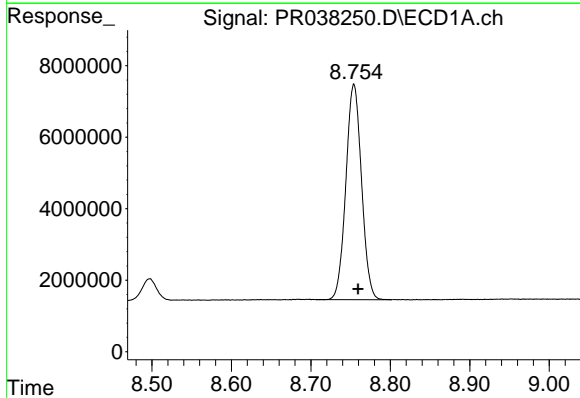
#1 Tetrachloro-m-xylene  
 R.T.: 3.778 min  
 Delta R.T.: 0.000 min  
 Response: 106268108  
 Conc: 63.37 ng/ml

**Instrument :**  
 ECD\_R  
**ClientSampleId :**  
 AR1660CCC500

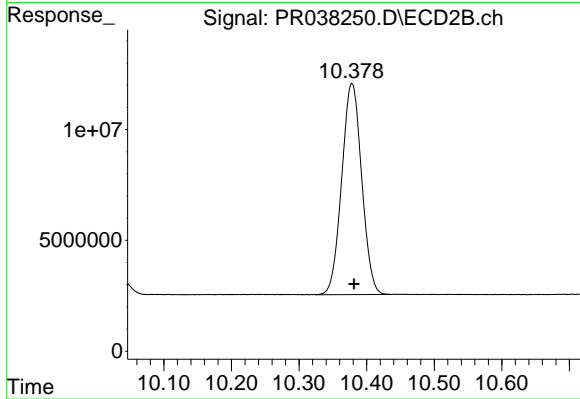
**Manual Integrations**  
**APPROVED**  
 Ankita  
 5/24/2019 3:12:57 PM



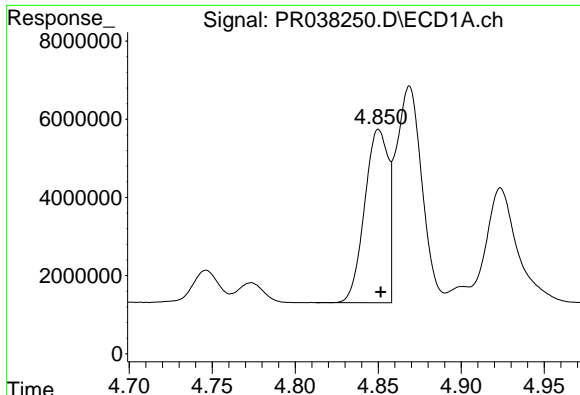
#1 Tetrachloro-m-xylene  
 R.T.: 4.626 min  
 Delta R.T.: 0.000 min  
 Response: 311878996  
 Conc: 61.47 ng/ml



#2 Decachlorobiphenyl  
 R.T.: 8.754 min  
 Delta R.T.: -0.005 min  
 Response: 82482007  
 Conc: 42.52 ng/ml



#2 Decachlorobiphenyl  
 R.T.: 10.378 min  
 Delta R.T.: -0.003 min  
 Response: 195449537  
 Conc: 44.31 ng/ml

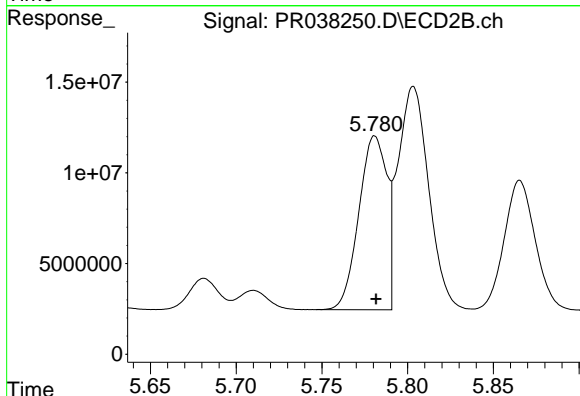


#3 AR-1016-1

R.T.: 4.850 min  
 Delta R.T.: -0.001 min  
 Response: 43673093  
 Conc: 596.03 ng/ml

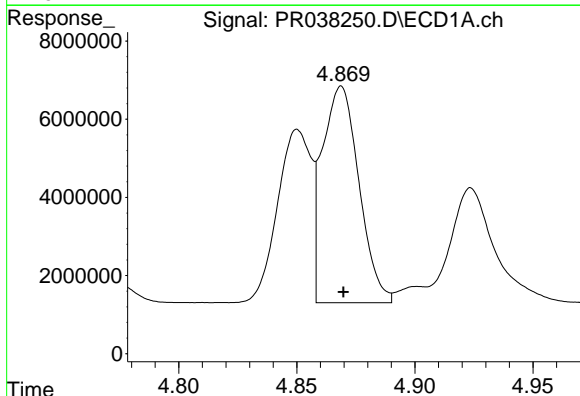
**Instrument :**  
 ECD\_R  
**ClientSampled :**  
 AR1660CCC500

**Manual Integrations**  
**APPROVED**  
 Ankita  
 5/24/2019 3:12:57 PM



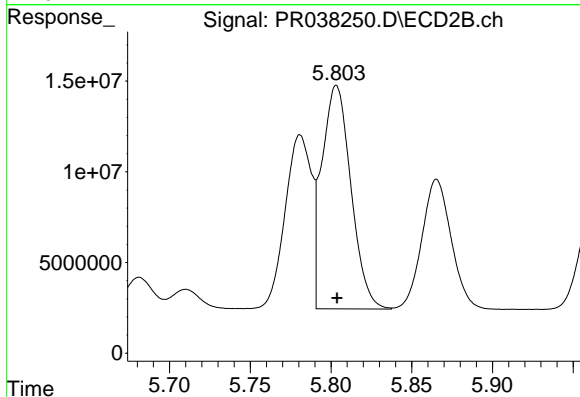
#3 AR-1016-1

R.T.: 5.781 min  
 Delta R.T.: 0.000 min  
 Response: 109270037  
 Conc: 579.98 ng/ml



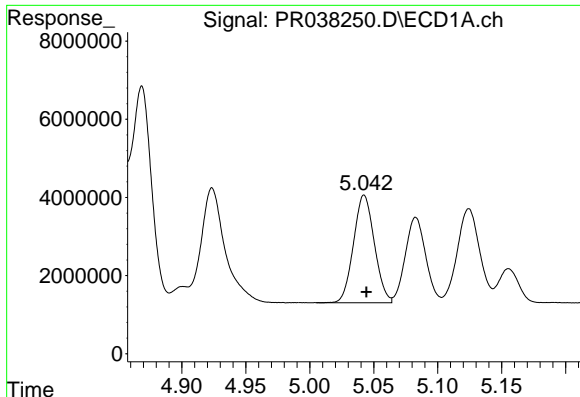
#4 AR-1016-2

R.T.: 4.869 min  
 Delta R.T.: -0.001 min  
 Response: 59245070  
 Conc: 596.47 ng/ml m



#4 AR-1016-2

R.T.: 5.803 min  
 Delta R.T.: 0.000 min  
 Response: 154471161  
 Conc: 568.75 ng/ml



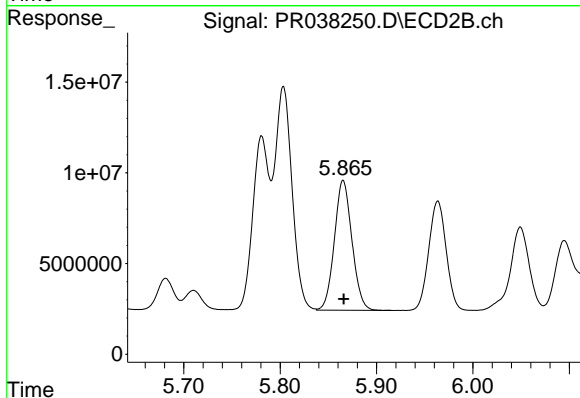
#5 AR-1016-3

R.T.: 5.043 min  
 Delta R.T.: -0.002 min  
 Response: 31206232  
 Conc: 588.64 ng/ml

Instrument :  
 ECD\_R  
 ClientSampleId :  
 AR1660CCC500

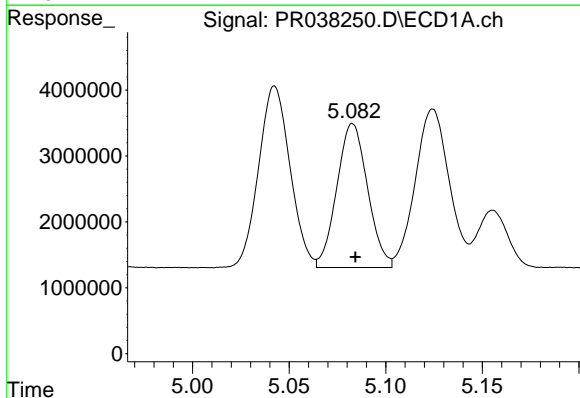
Manual Integrations  
 APPROVED

Ankita  
 5/24/2019 3:12:57 PM



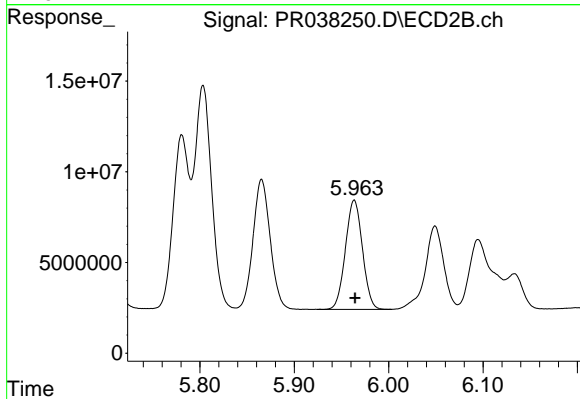
#5 AR-1016-3

R.T.: 5.865 min  
 Delta R.T.: 0.000 min  
 Response: 90724128  
 Conc: 552.49 ng/ml



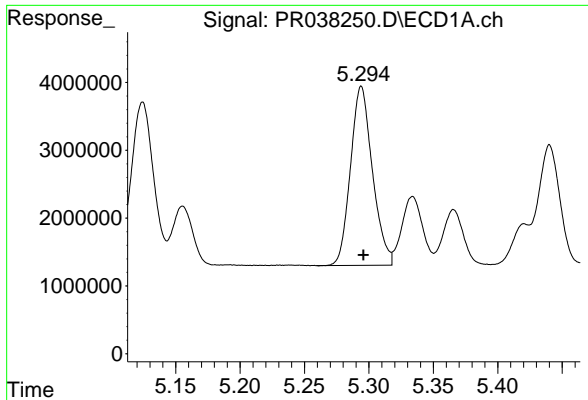
#6 AR-1016-4

R.T.: 5.083 min  
 Delta R.T.: -0.001 min  
 Response: 24224724  
 Conc: 575.17 ng/ml



#6 AR-1016-4

R.T.: 5.964 min  
 Delta R.T.: 0.000 min  
 Response: 75563954  
 Conc: 568.43 ng/ml

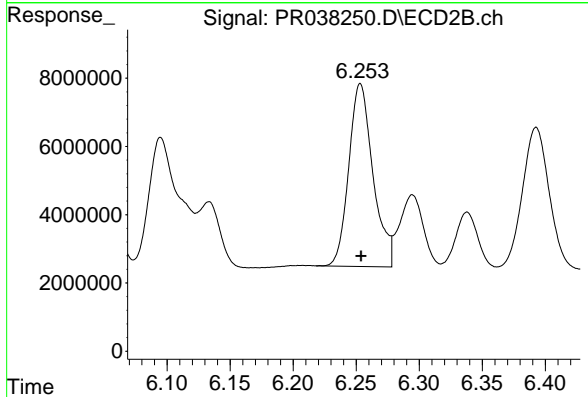


#7 AR-1016-5

R.T.: 5.294 min  
 Delta R.T.: -0.002 min  
 Response: 31254850  
 Conc: 556.82 ng/ml

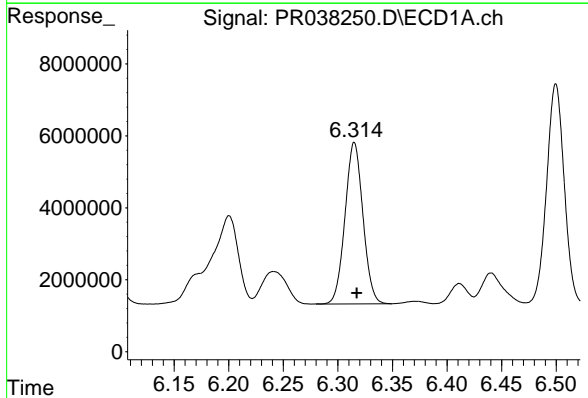
**Instrument :**  
 ECD\_R  
**ClientSampled :**  
 AR1660CCC500

**Manual Integrations**  
**APPROVED**  
 Ankita  
 5/24/2019 3:12:57 PM



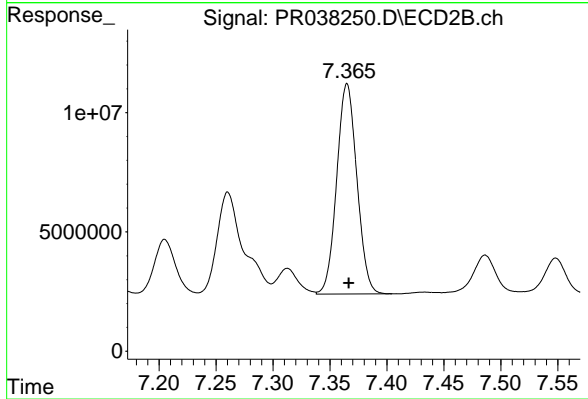
#7 AR-1016-5

R.T.: 6.253 min  
 Delta R.T.: 0.000 min  
 Response: 71537795  
 Conc: 529.26 ng/ml



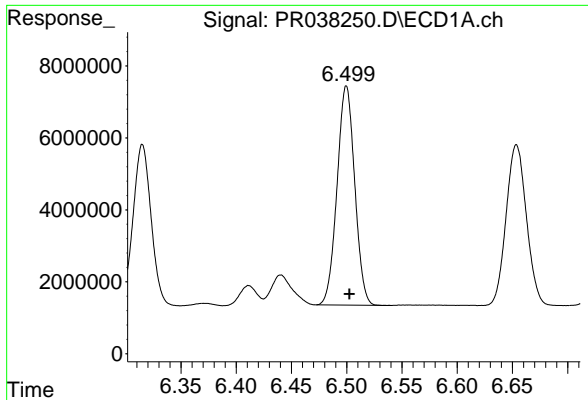
#31 AR-1260-1

R.T.: 6.315 min  
 Delta R.T.: -0.002 min  
 Response: 51381697  
 Conc: 479.75 ng/ml



#31 AR-1260-1

R.T.: 7.365 min  
 Delta R.T.: -0.001 min  
 Response: 108642208  
 Conc: 455.51 ng/ml

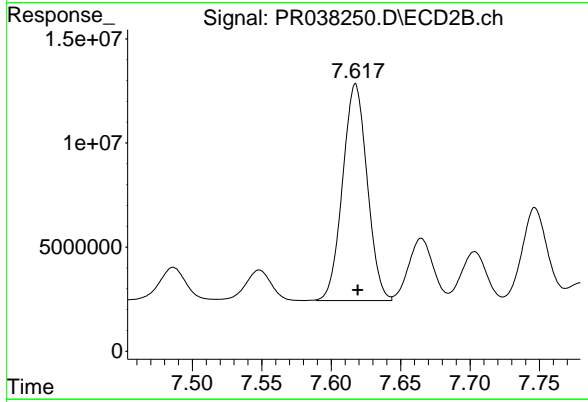


#32 AR-1260-2

R.T.: 6.500 min  
 Delta R.T.: -0.003 min  
 Response: 67855722  
 Conc: 460.43 ng/ml

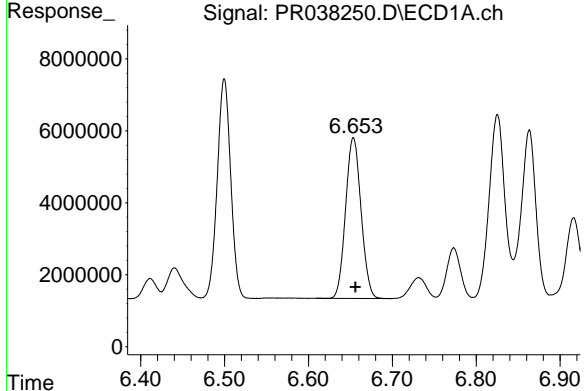
**Instrument :**  
 ECD\_R  
**ClientSampled :**  
 AR1660CCC500

**Manual Integrations**  
**APPROVED**  
 Ankita  
 5/24/2019 3:12:57 PM



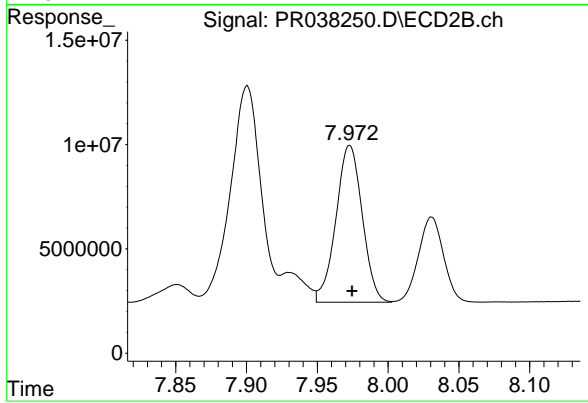
#32 AR-1260-2

R.T.: 7.617 min  
 Delta R.T.: -0.002 min  
 Response: 128219589  
 Conc: 448.25 ng/ml



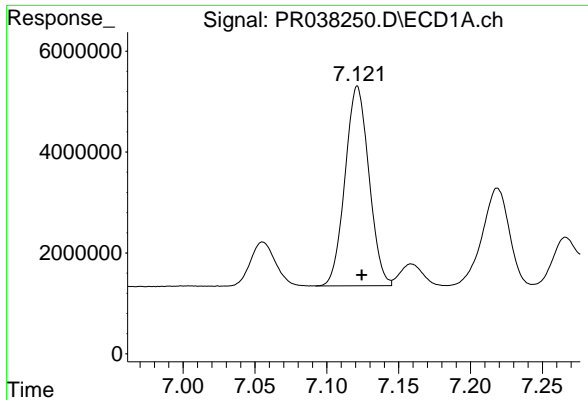
#33 AR-1260-3

R.T.: 6.654 min  
 Delta R.T.: -0.002 min  
 Response: 57101014  
 Conc: 468.84 ng/ml



#33 AR-1260-3

R.T.: 7.973 min  
 Delta R.T.: -0.002 min  
 Response: 97180974  
 Conc: 456.56 ng/ml

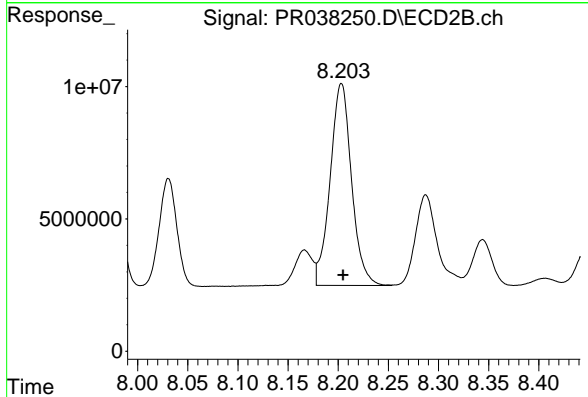


#34 AR-1260-4

R.T.: 7.121 min  
 Delta R.T.: -0.003 min  
 Response: 45718103  
 Conc: 464.63 ng/ml

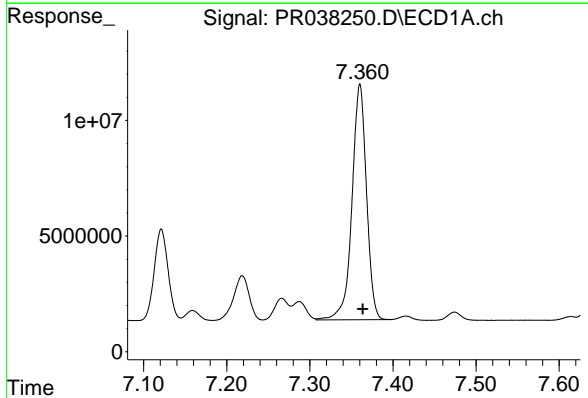
**Instrument :**  
 ECD\_R  
**ClientSampled :**  
 AR1660CCC500

**Manual Integrations**  
**APPROVED**  
 Ankita  
 5/24/2019 3:12:57 PM



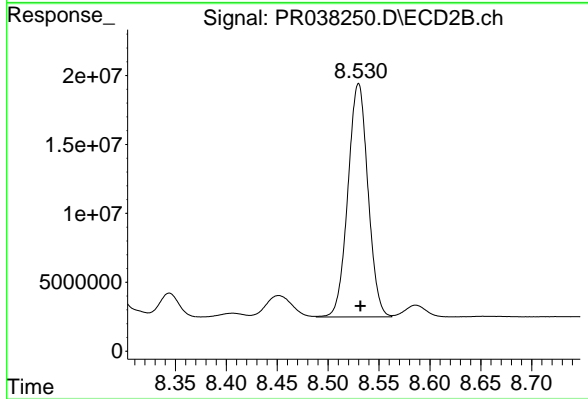
#34 AR-1260-4

R.T.: 8.203 min  
 Delta R.T.: -0.002 min  
 Response: 113388879  
 Conc: 458.23 ng/ml



#35 AR-1260-5

R.T.: 7.360 min  
 Delta R.T.: -0.003 min  
 Response: 123415805  
 Conc: 452.99 ng/ml



#35 AR-1260-5

R.T.: 8.530 min  
 Delta R.T.: -0.002 min  
 Response: 232189389  
 Conc: 452.79 ng/ml