

Data Path : Z:\pestpcbsrv\HPCHEM1\ECD\_R\Data\PR052319\  
 Data File : PR038251.D  
 Signal(s) : Signal #1: ECD1A.ch Signal #2: ECD2B.ch  
 Acq On : 23 May 2019 22:57  
 Operator : SM\MA  
 Sample : K2954-01  
 Misc :  
 ALS Vial : 15 Sample Multiplier: 1

Instrument :  
 ECD\_R  
 ClientSampleId :  
 20190405-COMP-CH-82

Integration File signal 1: autoint1.e  
 Integration File signal 2: autoint2.e  
 Quant Time: May 24 07:29:27 2019  
 Quant Method : Z:\pestpcbsrv\HPCHEM1\ECD\_R\Method\PR052319.M  
 Quant Title : GC EXTRACTABLES  
 QLast Update : Fri May 24 07:01:56 2019  
 Response via : Initial Calibration  
 Integrator: ChemStation

Volume Inj. : 2 µl  
 Signal #1 Phase : ZB-MR1 Signal #2 Phase: ZB-MR2  
 Signal #1 Info : 30Mx0.32mmx 0.50µ Signal #2 Info : 30M x 0.32mm x 0.25µm

Compound	RT#1	RT#2	Resp#1	Resp#2	ng/ml	ng/ml
-----						
System Monitoring Compounds						
1) SA Tetrachlo...	3.777	4.626	42211190	122.6E6	25.172	24.172
2) SA Decachlor...	8.756	10.380	26233875	61145717	13.524	13.862

Target Compounds

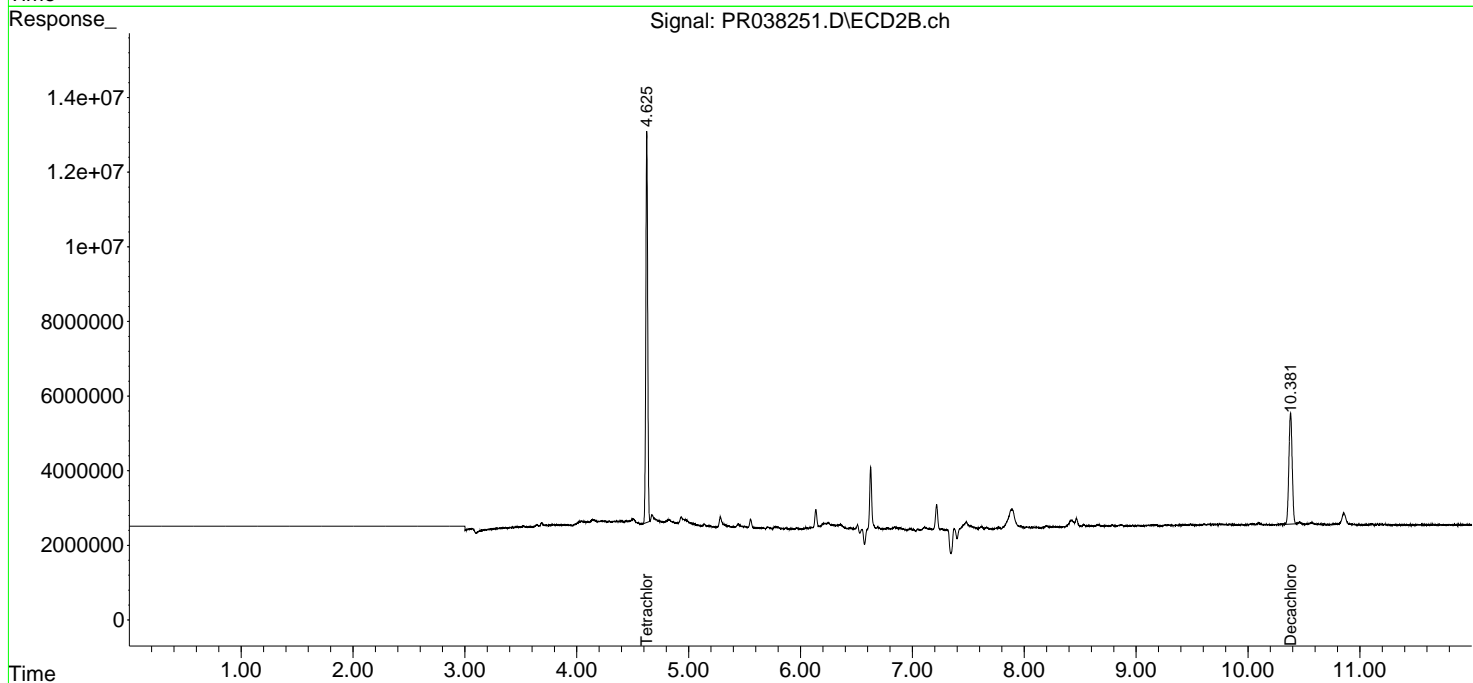
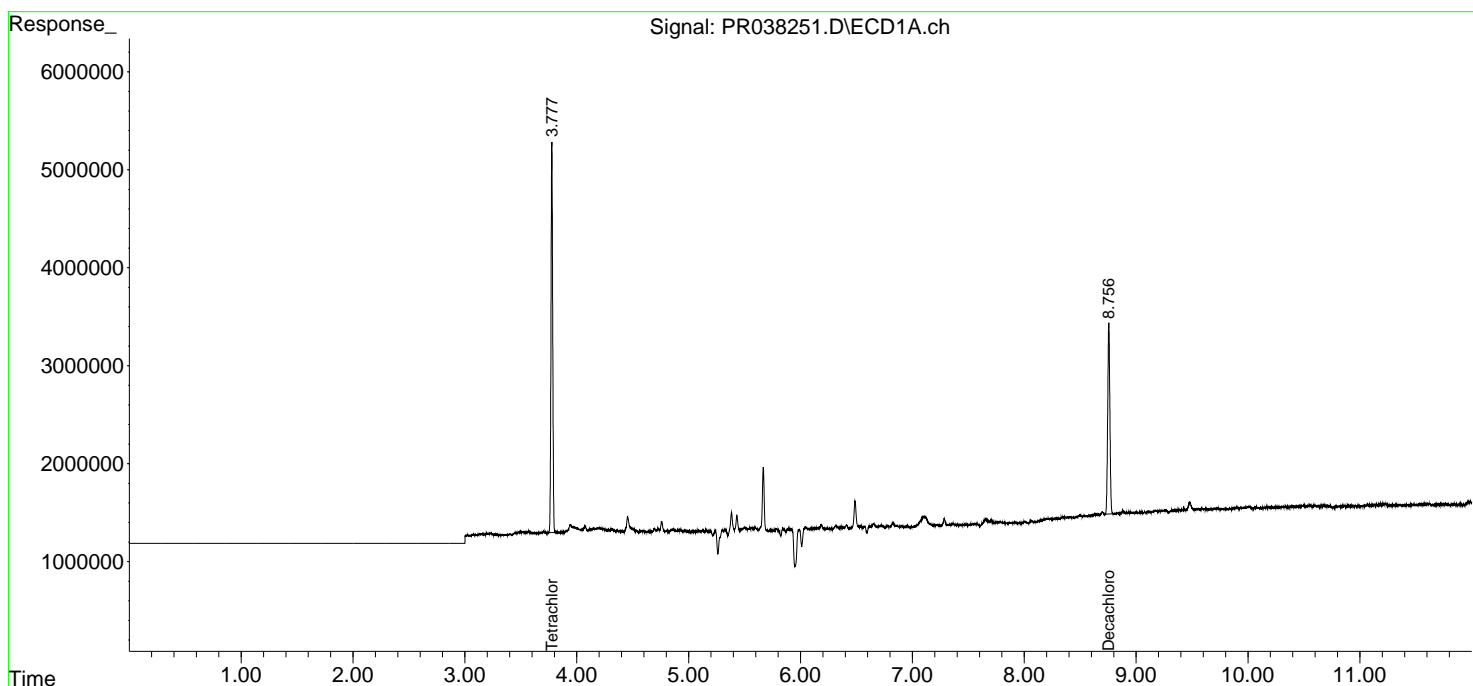
(f)=RT Delta > 1/2 Window (#)=Amounts differ by > 25% (m)=manual int.

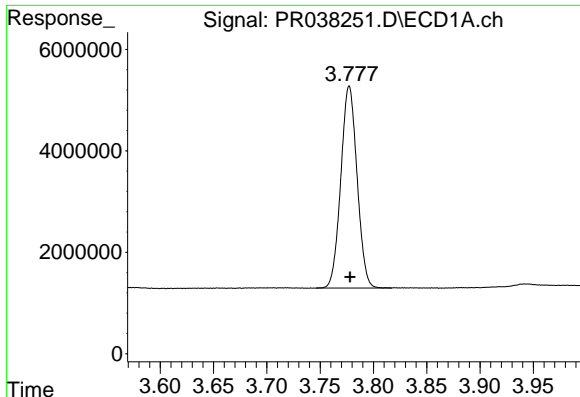
Data Path : Z:\pestpcbsrv\HPCHEM1\ECD\_R\Data\PR052319\  
 Data File : PR038251.D  
 Signal(s) : Signal #1: ECD1A.ch Signal #2: ECD2B.ch  
 Acq On : 23 May 2019 22:57  
 Operator : SM\MA  
 Sample : K2954-01  
 Misc :  
 ALS Vial : 15 Sample Multiplier: 1

**Instrument :**  
 ECD\_R  
**ClientSampled :**  
 20190405-COMP-CH-82

Integration File signal 1: autoint1.e  
 Integration File signal 2: autoint2.e  
 Quant Time: May 24 07:29:27 2019  
 Quant Method : Z:\pestpcbsrv\HPCHEM1\ECD\_R\Method\PR052319.M  
 Quant Title : GC EXTRACTABLES  
 QLast Update : Fri May 24 07:01:56 2019  
 Response via : Initial Calibration  
 Integrator: ChemStation

Volume Inj. : 2 µl  
 Signal #1 Phase : ZB-MR1 Signal #2 Phase: ZB-MR2  
 Signal #1 Info : 30Mx0.32mmx 0.50µ Signal #2 Info : 30M x 0.32mm x 0.25µm

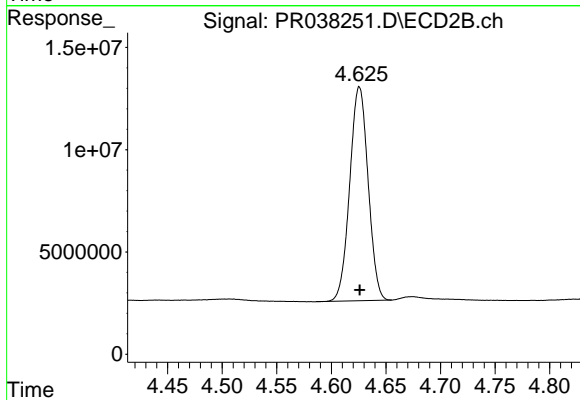




#1 Tetrachloro-m-xylene

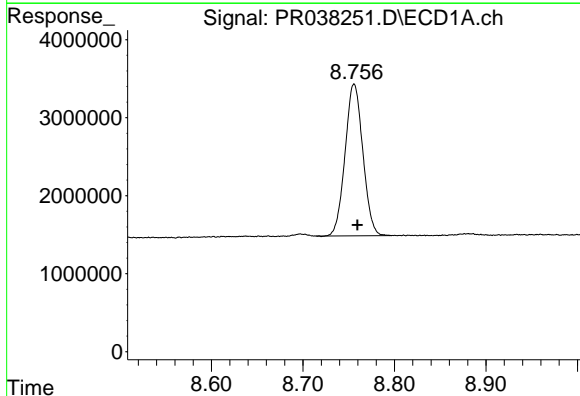
R.T.: 3.777 min  
Delta R.T.: 0.000 min  
Response: 42211190  
Conc: 25.17 ng/ml

Instrument :  
ECD\_R  
ClientSampleId :  
20190405-COMP-CH-82



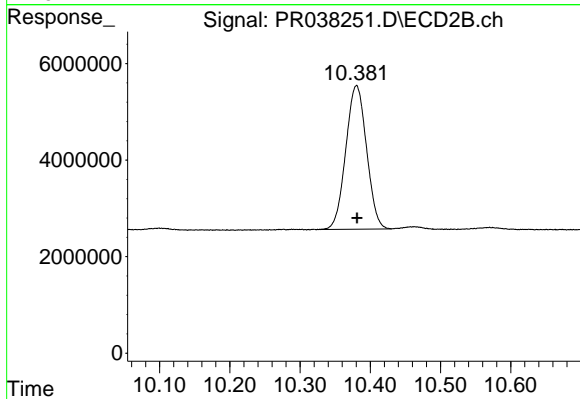
#1 Tetrachloro-m-xylene

R.T.: 4.626 min  
Delta R.T.: 0.000 min  
Response: 122636971  
Conc: 24.17 ng/ml



#2 Decachlorobiphenyl

R.T.: 8.756 min  
Delta R.T.: -0.004 min  
Response: 26233875  
Conc: 13.52 ng/ml



#2 Decachlorobiphenyl

R.T.: 10.380 min  
Delta R.T.: 0.000 min  
Response: 61145717  
Conc: 13.86 ng/ml