

Data Path : Z:\pestpcbsrv\HPCHEM1\ECD_R\Data\PR052319\
 Data File : PR038254.D
 Signal(s) : Signal #1: ECD1A.ch Signal #2: ECD2B.ch
 Acq On : 23 May 2019 23:40
 Operator : SM\MA
 Sample : PB119923BS
 Misc :
 ALS Vial : 142 Sample Multiplier: 1

Instrument :
 ECD_R
ClientSampleId :
 PB119923BS

Manual Integrations
APPROVED
 Ankita
 5/24/2019 3:13:12 PM

Integration File signal 1: autoint1.e
 Integration File signal 2: autoint2.e
 Quant Time: May 24 07:30:49 2019
 Quant Method : Z:\pestpcbsrv\HPCHEM1\ECD_R\Method\PR052319.M
 Quant Title : GC EXTRACTABLES
 QLast Update : Fri May 24 07:01:56 2019
 Response via : Initial Calibration
 Integrator: ChemStation

Volume Inj. : 2 µl
 Signal #1 Phase : ZB-MR2 Signal #2 Phase: ZB-MR2
 Signal #1 Info : 30Mx0.32mmx 0.50µ Signal #2 Info : 30M x 0.32mm x 0.25µm

Compound	RT#1	RT#2	Resp#1	Resp#2	ng/ml	ng/ml

System Monitoring Compounds						
1) SA Tetrachlo...	3.777	4.625	41803801	126.1E6	24.929	24.862
2) SA Decachlor...	8.756	10.378	37895894	84222260	19.535	19.094
Target Compounds						
3) L1 AR-1016-1	4.850	5.781	19346540	48621761	264.032	258.074
4) L1 AR-1016-2	4.869	5.803	26694454	67980702	268.758	250.301
5) L1 AR-1016-3	5.042	5.865	14034933	40662217	264.739m	247.626
6) L1 AR-1016-4	5.083	5.964	11235028	33647932	266.755m	253.119
7) L1 AR-1016-5	5.294	6.253	14764095	32647194	263.029m	241.534
31) L7 AR-1260-1	6.315	7.365	24907740	52811192	232.565	221.425
32) L7 AR-1260-2	6.500	7.618	33298643	59651743	225.945	208.538
33) L7 AR-1260-3	6.654	7.973	27539724	42979291	226.122	201.918
34) L7 AR-1260-4	7.122	8.203	22086104	49876984	224.458m	201.566
35) L7 AR-1260-5	7.361	8.530	56527498	96535335	207.483	188.253

(f)=RT Delta > 1/2 Window (#)=Amounts differ by > 25% (m)=manual int.

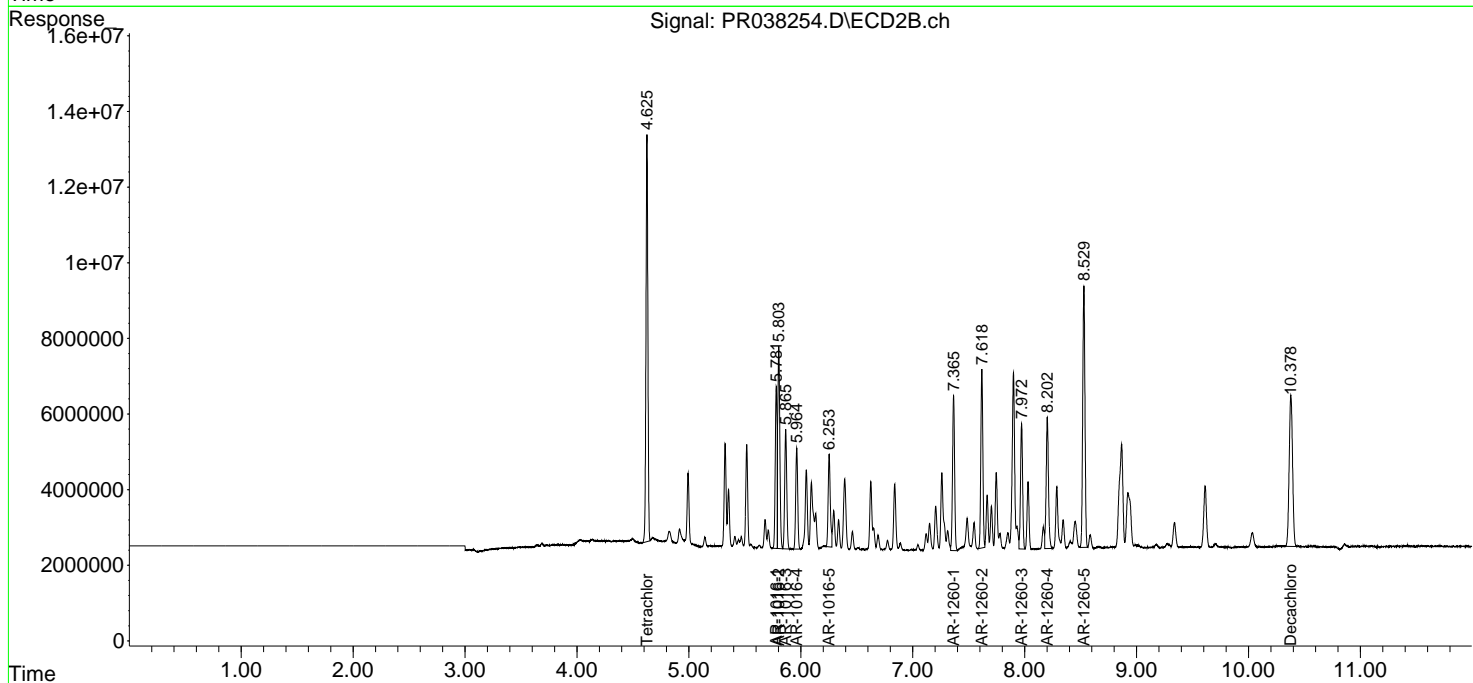
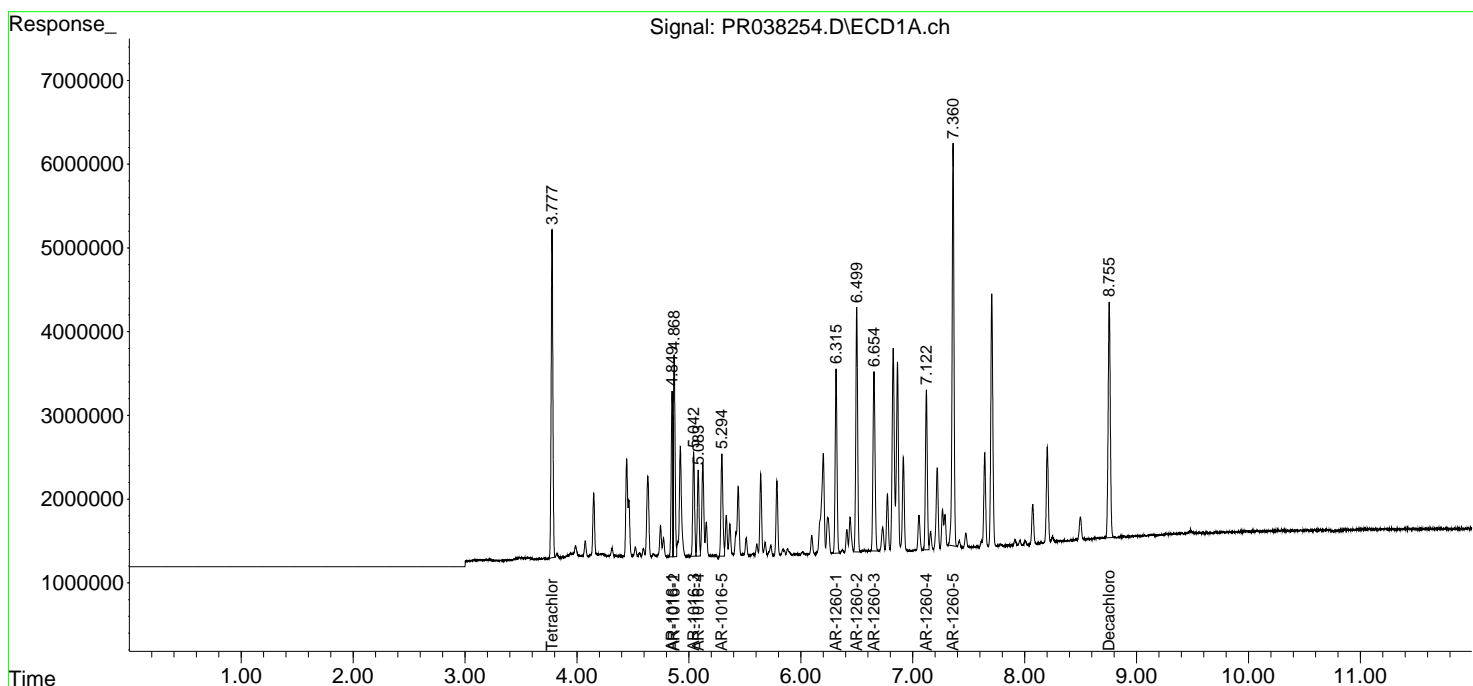
Data Path : Z:\pestpcbsrv\HPCHEM1\ECD_R\Data\PR052319\
 Data File : PR038254.D
 Signal(s) : Signal #1: ECD1A.ch Signal #2: ECD2B.ch
 Acq On : 23 May 2019 23:40
 Operator : SM\MA
 Sample : PB119923BS
 Misc :
 ALS Vial : 142 Sample Multiplier: 1

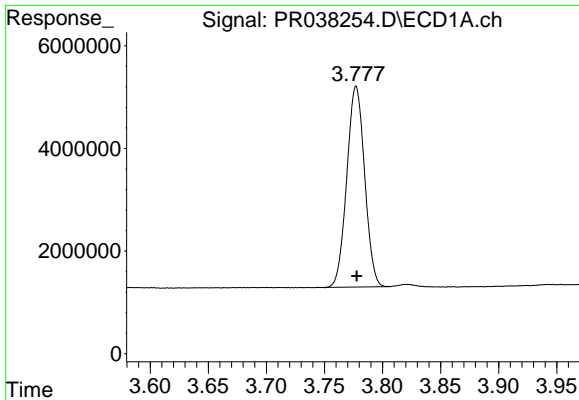
Instrument :
 ECD_R
Client Sampled :
 PB119923BS

Manual Integrations
APPROVED
 Ankita
 5/24/2019 3:13:12 PM

Integration File signal 1: autoint1.e
 Integration File signal 2: autoint2.e
 Quant Time: May 24 07:30:49 2019
 Quant Method : Z:\pestpcbsrv\HPCHEM1\ECD_R\Method\PR052319.M
 Quant Title : GC EXTRACTABLES
 QLast Update : Fri May 24 07:01:56 2019
 Response via : Initial Calibration
 Integrator: ChemStation

Volume Inj. : 2 µl
 Signal #1 Phase : ZB-MR1 Signal #2 Phase: ZB-MR2
 Signal #1 Info : 30Mx0.32mmx 0.50µm Signal #2 Info : 30M x 0.32mm x 0.25µm

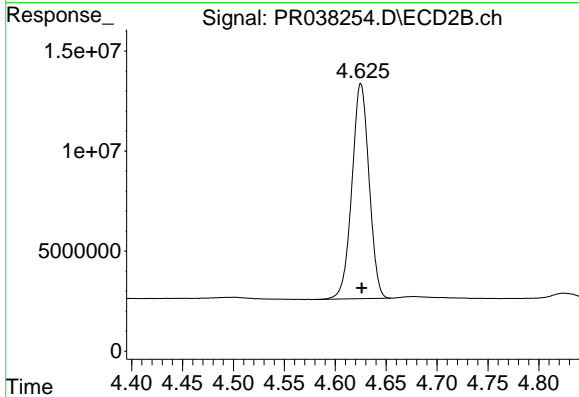




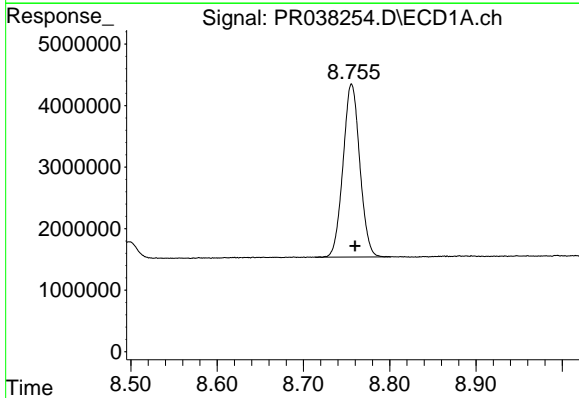
#1 Tetrachloro-m-xylene
 R.T.: 3.777 min
 Delta R.T.: 0.000 min
 Response: 41803801
 Conc: 24.93 ng/ml

Instrument :
 ECD_R
ClientSampled :
 PB119923BS

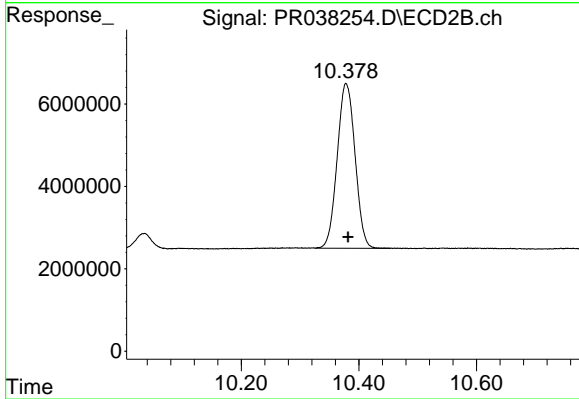
Manual Integrations
APPROVED
 Ankita
 5/24/2019 3:13:12 PM



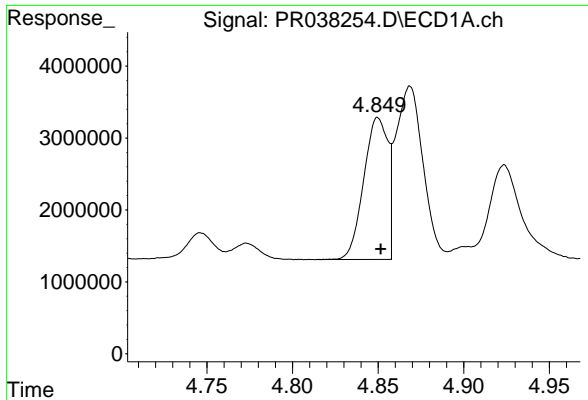
#1 Tetrachloro-m-xylene
 R.T.: 4.625 min
 Delta R.T.: 0.000 min
 Response: 126135702
 Conc: 24.86 ng/ml



#2 Decachlorobiphenyl
 R.T.: 8.756 min
 Delta R.T.: -0.004 min
 Response: 37895894
 Conc: 19.54 ng/ml



#2 Decachlorobiphenyl
 R.T.: 10.378 min
 Delta R.T.: -0.003 min
 Response: 84222260
 Conc: 19.09 ng/ml

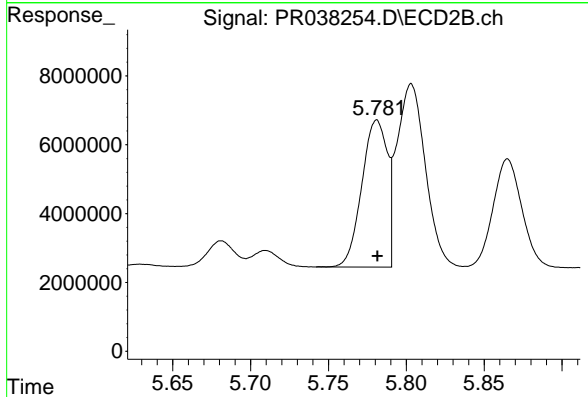


#3 AR-1016-1

R.T.: 4.850 min
 Delta R.T.: -0.002 min
 Response: 19346540
 Conc: 264.03 ng/ml

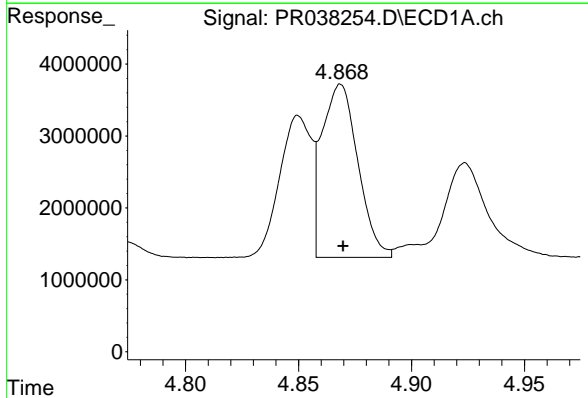
Instrument :
 ECD_R
ClientSampled :
 PB119923BS

Manual Integrations
APPROVED
 Ankita
 5/24/2019 3:13:12 PM



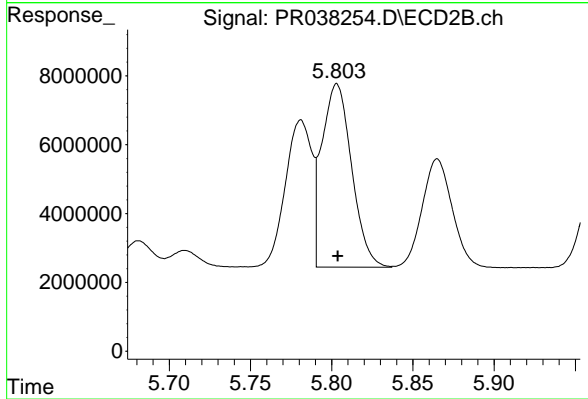
#3 AR-1016-1

R.T.: 5.781 min
 Delta R.T.: 0.000 min
 Response: 48621761
 Conc: 258.07 ng/ml



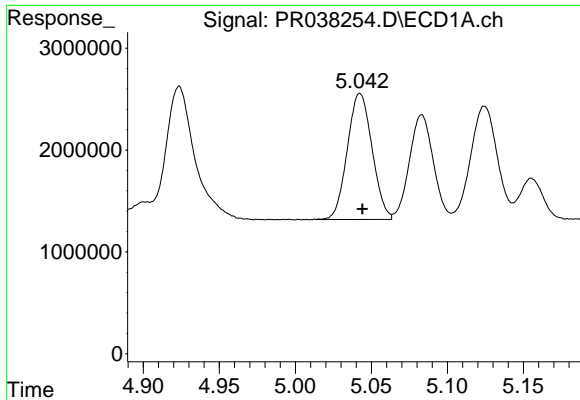
#4 AR-1016-2

R.T.: 4.869 min
 Delta R.T.: -0.001 min
 Response: 26694454
 Conc: 268.76 ng/ml



#4 AR-1016-2

R.T.: 5.803 min
 Delta R.T.: 0.000 min
 Response: 67980702
 Conc: 250.30 ng/ml

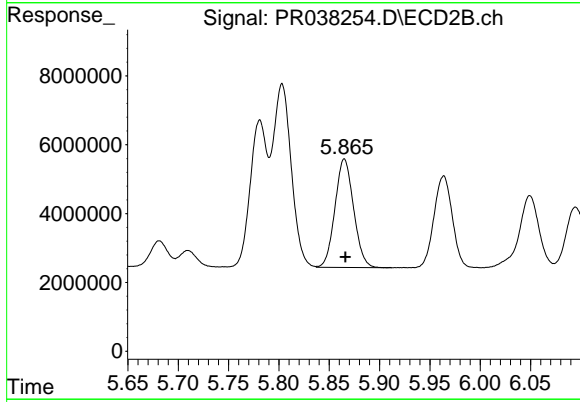


#5 AR-1016-3

R.T.: 5.042 min
 Delta R.T.: -0.002 min
 Response: 14034933
 Conc: 264.74 ng/ml m

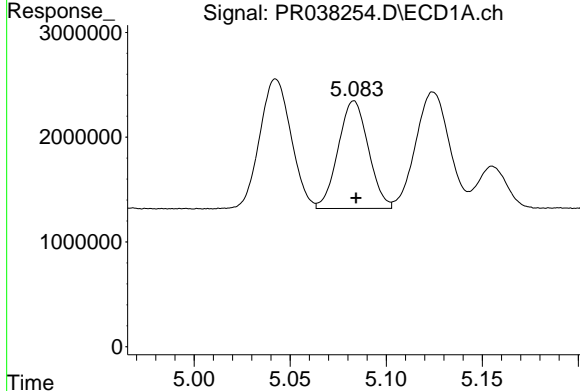
Instrument :
 ECD_R
ClientSampled :
 PB119923BS

Manual Integrations
APPROVED
 Ankita
 5/24/2019 3:13:12 PM



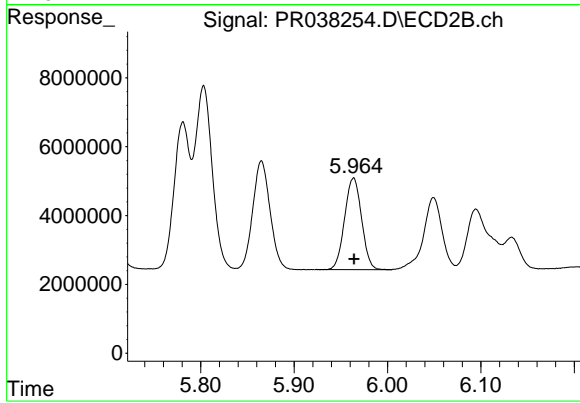
#5 AR-1016-3

R.T.: 5.865 min
 Delta R.T.: 0.000 min
 Response: 40662217
 Conc: 247.63 ng/ml



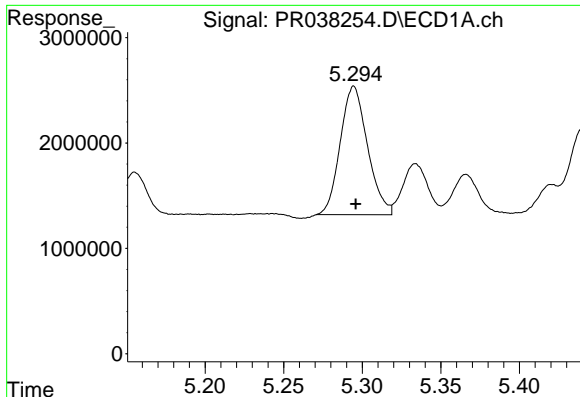
#6 AR-1016-4

R.T.: 5.083 min
 Delta R.T.: -0.001 min
 Response: 11235028
 Conc: 266.75 ng/ml m



#6 AR-1016-4

R.T.: 5.964 min
 Delta R.T.: 0.000 min
 Response: 33647932
 Conc: 253.12 ng/ml

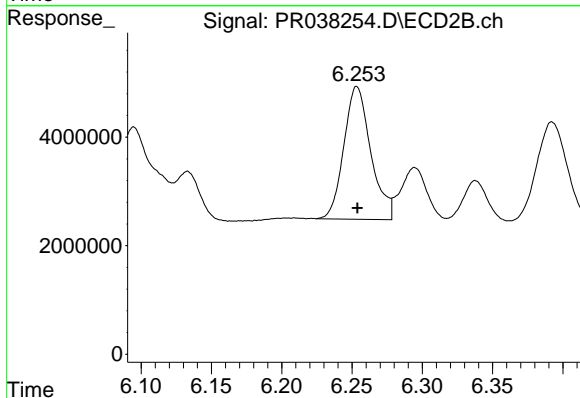


#7 AR-1016-5

R.T.: 5.294 min
 Delta R.T.: -0.002 min
 Response: 14764095
 Conc: 263.03 ng/ml m

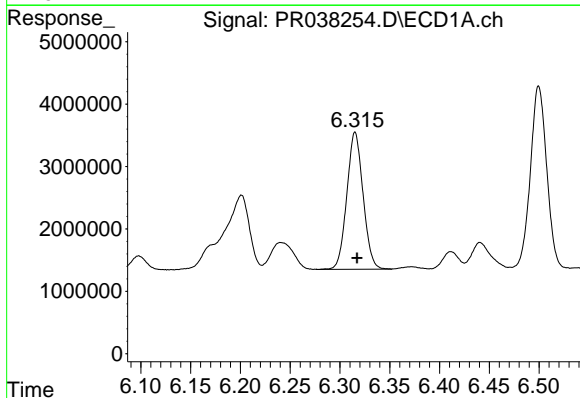
Instrument :
 ECD_R
ClientSampled :
 PB119923BS

Manual Integrations
APPROVED
 Ankita
 5/24/2019 3:13:12 PM



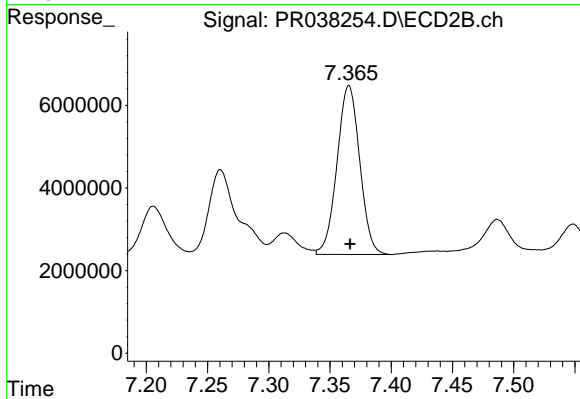
#7 AR-1016-5

R.T.: 6.253 min
 Delta R.T.: 0.000 min
 Response: 32647194
 Conc: 241.53 ng/ml



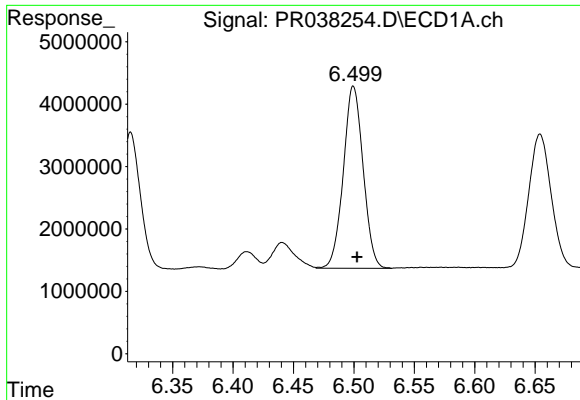
#31 AR-1260-1

R.T.: 6.315 min
 Delta R.T.: -0.002 min
 Response: 24907740
 Conc: 232.56 ng/ml



#31 AR-1260-1

R.T.: 7.365 min
 Delta R.T.: 0.000 min
 Response: 52811192
 Conc: 221.42 ng/ml

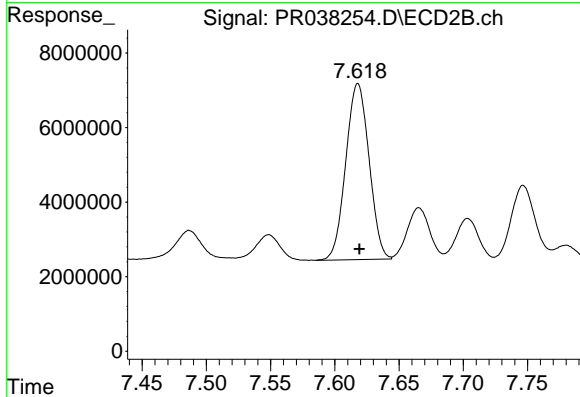


#32 AR-1260-2

R.T.: 6.500 min
 Delta R.T.: -0.003 min
 Response: 33298643
 Conc: 225.95 ng/ml

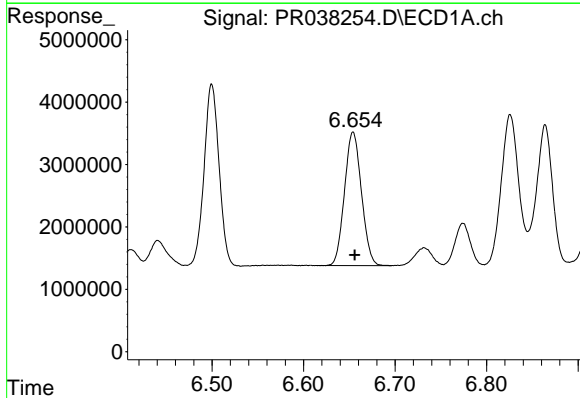
Instrument :
 ECD_R
ClientSampled :
 PB119923BS

Manual Integrations
APPROVED
 Ankita
 5/24/2019 3:13:12 PM



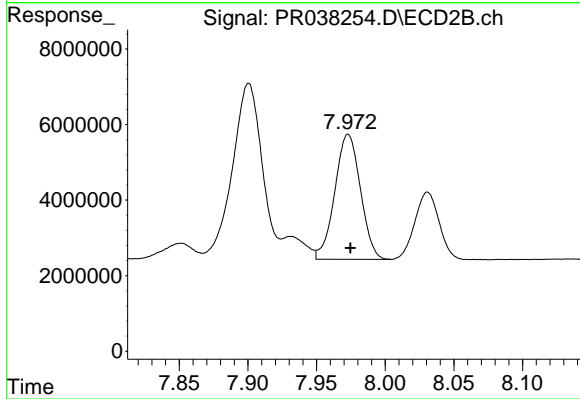
#32 AR-1260-2

R.T.: 7.618 min
 Delta R.T.: -0.001 min
 Response: 59651743
 Conc: 208.54 ng/ml



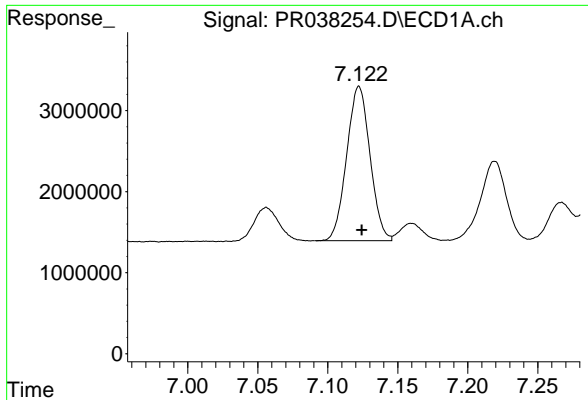
#33 AR-1260-3

R.T.: 6.654 min
 Delta R.T.: -0.002 min
 Response: 27539724
 Conc: 226.12 ng/ml



#33 AR-1260-3

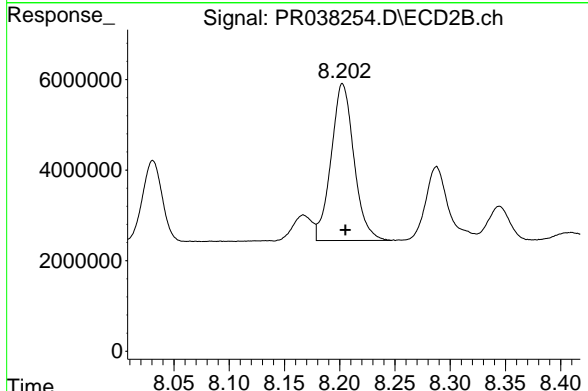
R.T.: 7.973 min
 Delta R.T.: -0.002 min
 Response: 42979291
 Conc: 201.92 ng/ml



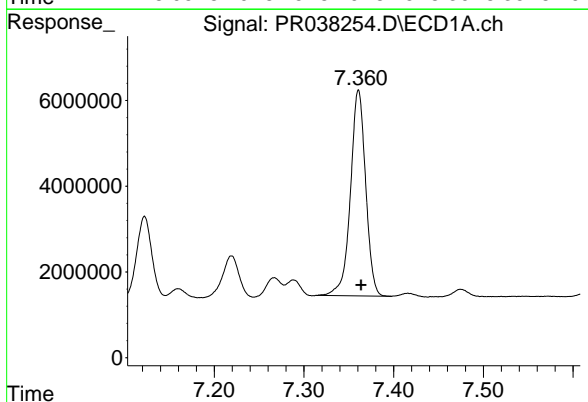
#34 AR-1260-4
 R.T.: 7.122 min
 Delta R.T.: -0.002 min
 Response: 22086104
 Conc: 224.46 ng/ml m

Instrument :
 ECD_R
ClientSampled :
 PB119923BS

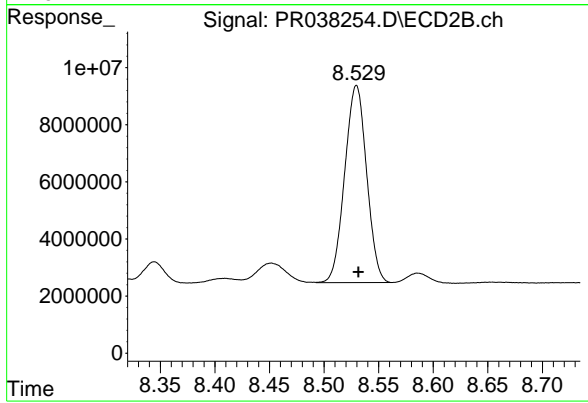
Manual Integrations
APPROVED
 Ankita
 5/24/2019 3:13:12 PM



#34 AR-1260-4
 R.T.: 8.203 min
 Delta R.T.: -0.002 min
 Response: 49876984
 Conc: 201.57 ng/ml



#35 AR-1260-5
 R.T.: 7.361 min
 Delta R.T.: -0.003 min
 Response: 56527498
 Conc: 207.48 ng/ml



#35 AR-1260-5
 R.T.: 8.530 min
 Delta R.T.: -0.002 min
 Response: 96535335
 Conc: 188.25 ng/ml