

Data Path : Z:\pestpcbsrv\HPCHEM1\ECD_R\Data\PR052319\
 Data File : PR038258.D
 Signal(s) : Signal #1: ECD1A.ch Signal #2: ECD2B.ch
 Acq On : 24 May 2019 00:38
 Operator : SM\MA
 Sample : K2966-03
 Misc :
 ALS Vial : 38 Sample Multiplier: 1

Instrument :
 ECD_R
 ClientSampleId :
 FESB-15(1.2-1.7)

Integration File signal 1: autoint1.e
 Integration File signal 2: autoint2.e
 Quant Time: May 24 07:32:26 2019
 Quant Method : Z:\pestpcbsrv\HPCHEM1\ECD_R\Method\PR052319.M
 Quant Title : GC EXTRACTABLES
 QLast Update : Fri May 24 07:01:56 2019
 Response via : Initial Calibration
 Integrator: ChemStation

Volume Inj. : 2 µl
 Signal #1 Phase : ZB-MR1 Signal #2 Phase: ZB-MR2
 Signal #1 Info : 30Mx0.32mmx 0.50µ Signal #2 Info : 30M x 0.32mm x 0.25µm

Compound	RT#1	RT#2	Resp#1	Resp#2	ng/ml	ng/ml

System Monitoring Compounds						
1) SA Tetrachlo...	3.777	4.626	38960530	112.5E6	23.234	22.181
2) SA Decachlor...	8.756	10.378	32972936	71108062	16.998	16.121

Target Compounds

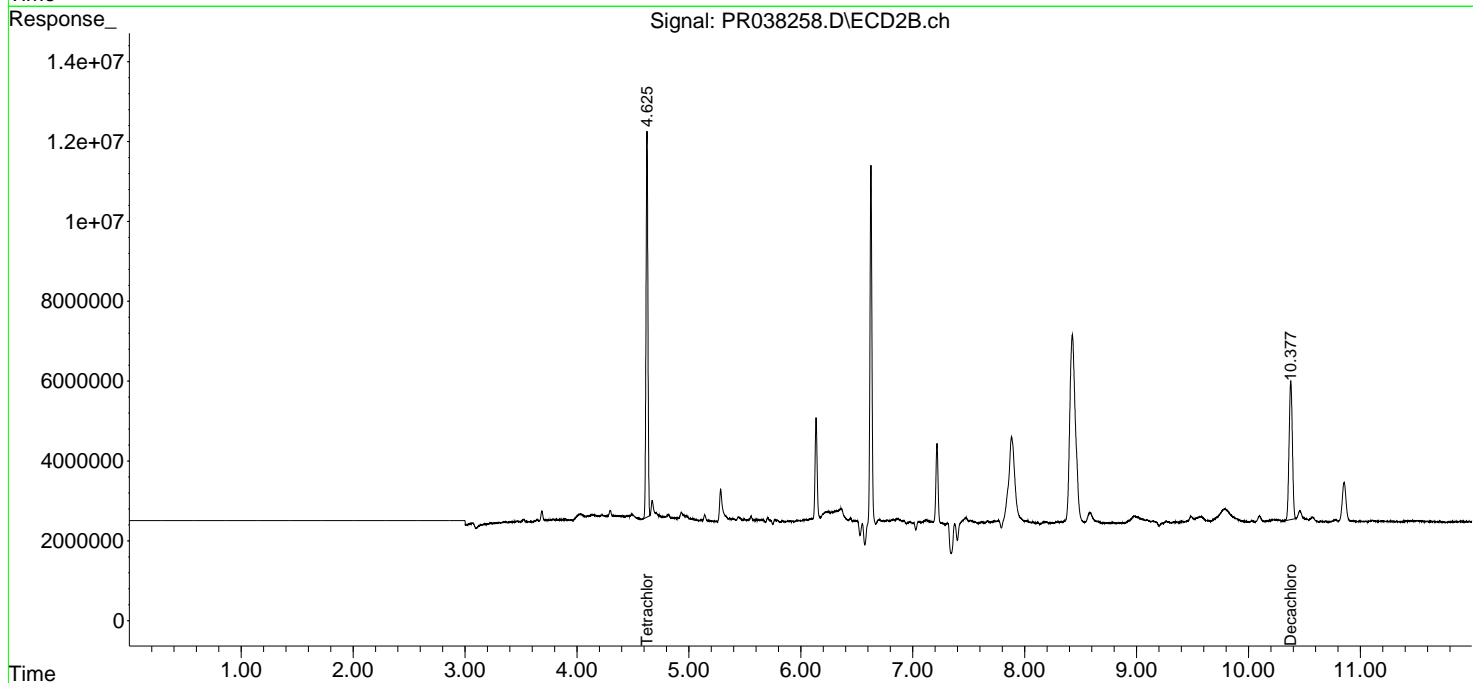
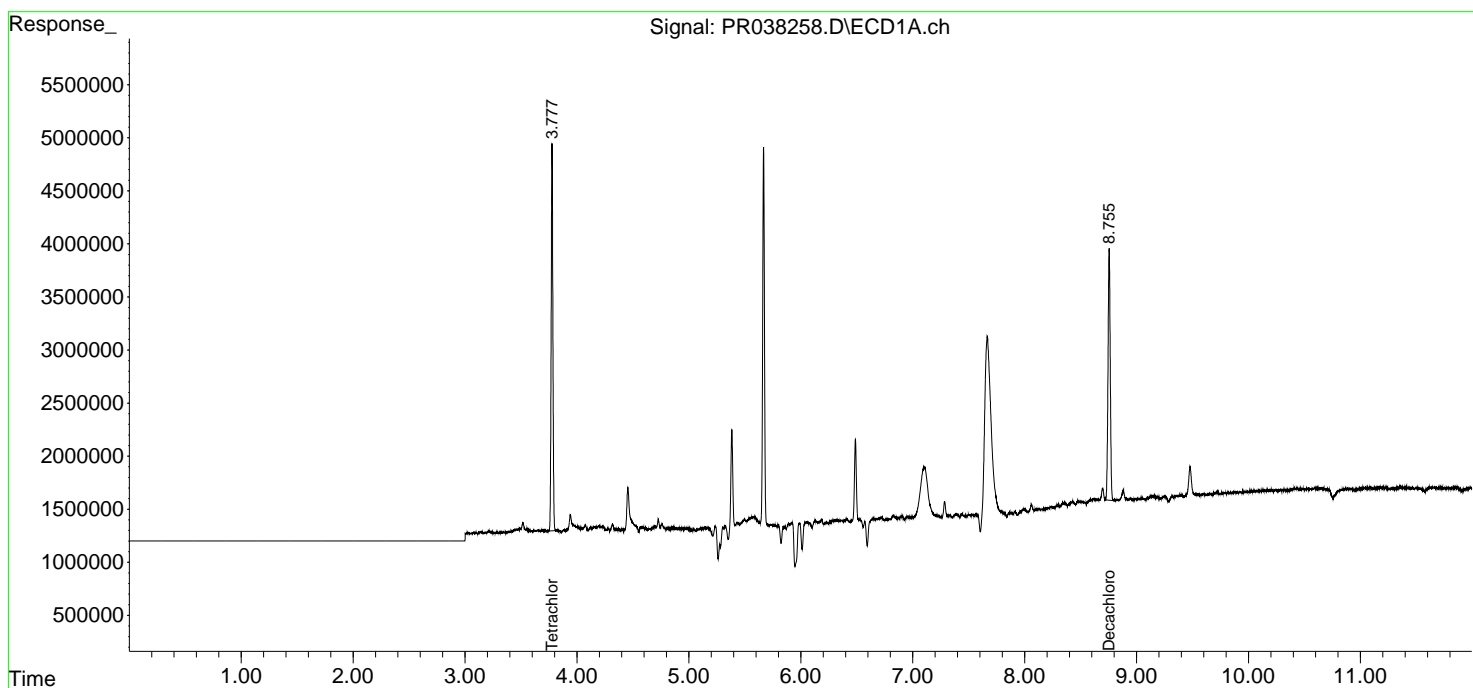
(f)=RT Delta > 1/2 Window (#)=Amounts differ by > 25% (m)=manual int.

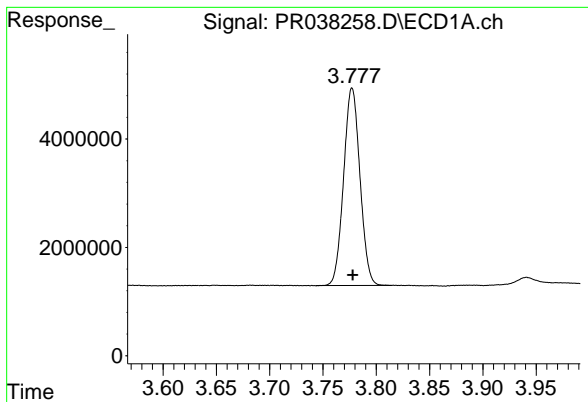
Data Path : Z:\pestpcbsrv\HPCHEM1\ECD_R\Data\PR052319\
 Data File : PR038258.D
 Signal(s) : Signal #1: ECD1A.ch Signal #2: ECD2B.ch
 Acq On : 24 May 2019 00:38
 Operator : SM\MA
 Sample : K2966-03
 Misc :
 ALS Vial : 38 Sample Multiplier: 1

Instrument :
 ECD_R
 ClientSampleId :
 FESB-15(1.2-1.7)

Integration File signal 1: autoint1.e
 Integration File signal 2: autoint2.e
 Quant Time: May 24 07:32:26 2019
 Quant Method : Z:\pestpcbsrv\HPCHEM1\ECD_R\Method\PR052319.M
 Quant Title : GC EXTRACTABLES
 QLast Update : Fri May 24 07:01:56 2019
 Response via : Initial Calibration
 Integrator: ChemStation

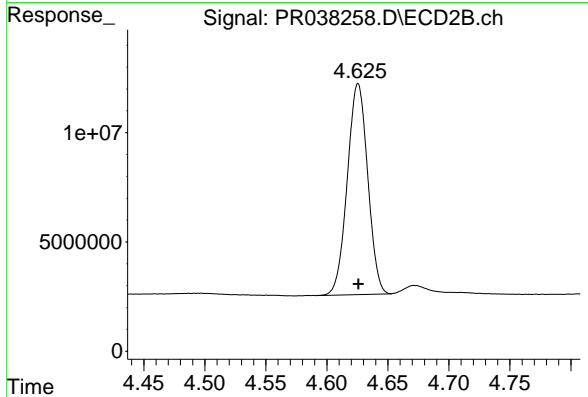
Volume Inj. : 2 µl
 Signal #1 Phase : ZB-MR1 Signal #2 Phase: ZB-MR2
 Signal #1 Info : 30Mx0.32mmx 0.50µ Signal #2 Info : 30M x 0.32mm x 0.25µm



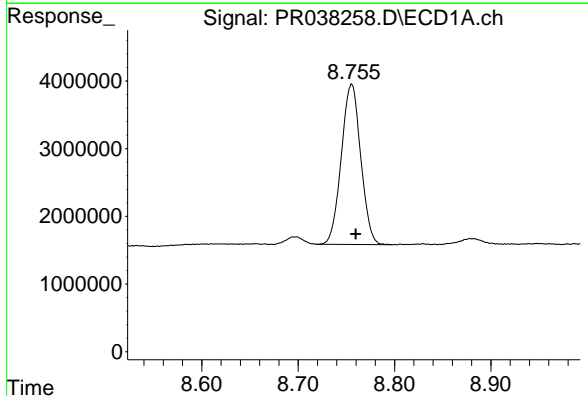


#1 Tetrachloro-m-xylene
R.T.: 3.777 min
Delta R.T.: 0.000 min
Response: 38960530
Conc: 23.23 ng/ml

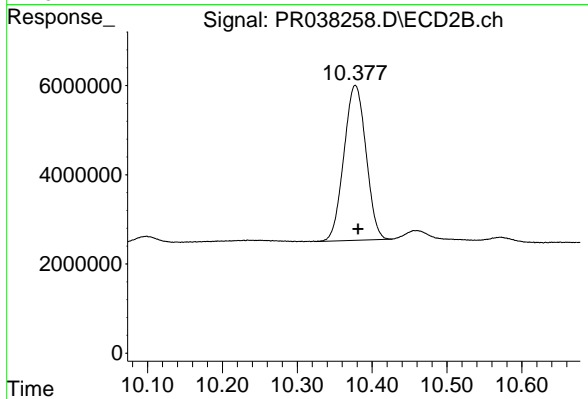
Instrument :
ECD_R
ClientSampleId :
FESB-15(1.2-1.7)



#1 Tetrachloro-m-xylene
R.T.: 4.626 min
Delta R.T.: 0.000 min
Response: 11253555
Conc: 22.18 ng/ml



#2 Decachlorobiphenyl
R.T.: 8.756 min
Delta R.T.: -0.004 min
Response: 32972936
Conc: 17.00 ng/ml



#2 Decachlorobiphenyl
R.T.: 10.378 min
Delta R.T.: -0.004 min
Response: 71108062
Conc: 16.12 ng/ml