

Data Path : Z:\pestpcbsrv\HPCHEM1\ECD\_R\Data\PR052319\  
 Data File : PR038265.D  
 Signal(s) : Signal #1: ECD1A.ch Signal #2: ECD2B.ch  
 Acq On : 24 May 2019 02:19  
 Operator : SM\MA  
 Sample : K2959-02  
 Misc :  
 ALS Vial : 22 Sample Multiplier: 1

Instrument :  
 ECD\_R  
 ClientSampleID :  
 20658

Manual Integrations  
 APPROVED

Ankita  
 5/24/2019 3:13:24 PM

Integration File signal 1: autoint1.e  
 Integration File signal 2: autoint2.e  
 Quant Time: May 24 08:07:06 2019  
 Quant Method : Z:\pestpcbsrv\HPCHEM1\ECD\_R\Method\PR052319.M  
 Quant Title : GC EXTRACTABLES  
 QLast Update : Fri May 24 07:01:56 2019  
 Response via : Initial Calibration  
 Integrator: ChemStation

Volume Inj. : 2 µl  
 Signal #1 Phase : ZB-MR1 Signal #2 Phase: ZB-MR2  
 Signal #1 Info : 30Mx0.32mmx 0.50µ Signal #2 Info : 30M x 0.32mm x 0.25µm

Compound	RT#1	RT#2	Resp#1	Resp#2	ng/ml	ng/ml
-----						
System Monitoring Compounds						
1) SA Tetrachlo...	3.780	4.626	31784975	53267756	18.955m	10.499m#
2) SA Decachlor...	8.755	10.377	30489513	84246548	15.717	19.099m
Target Compounds						
16) L4 AR-1242-1	4.849	5.780	68713329	126.2E6	1011.789m	719.784m#
17) L4 AR-1242-2	4.869	5.803	47535614	241.6E6	510.756m	957.545m#
18) L4 AR-1242-3	5.043	5.865	20899632	92013443	424.444m	605.507m#
19) L4 AR-1242-4	5.125	5.967	27902973	180.9E6	598.322m	1434.628m#
20) L4 AR-1242-5	5.641	6.690	36771260	118.5E6	585.294m	862.634m#
-----						

(f)=RT Delta > 1/2 Window (#)=Amounts differ by > 25% (m)=manual int.

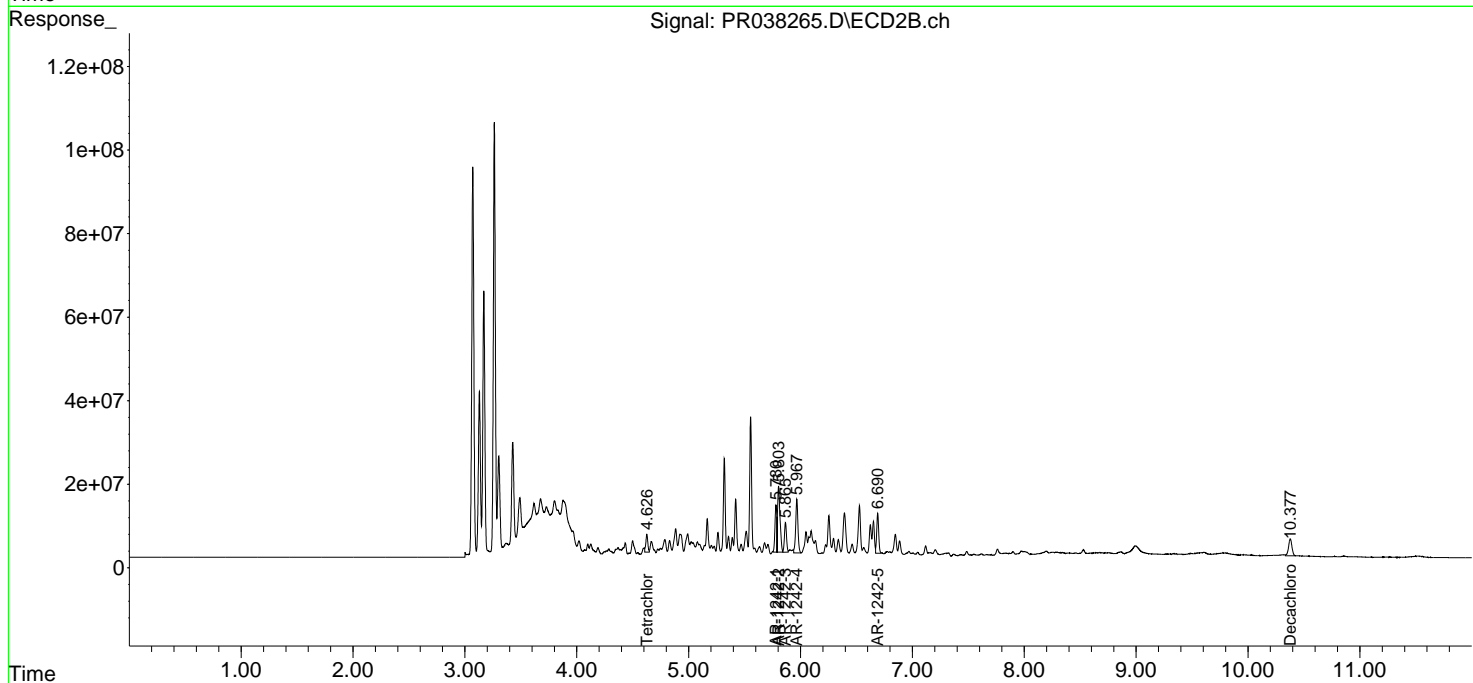
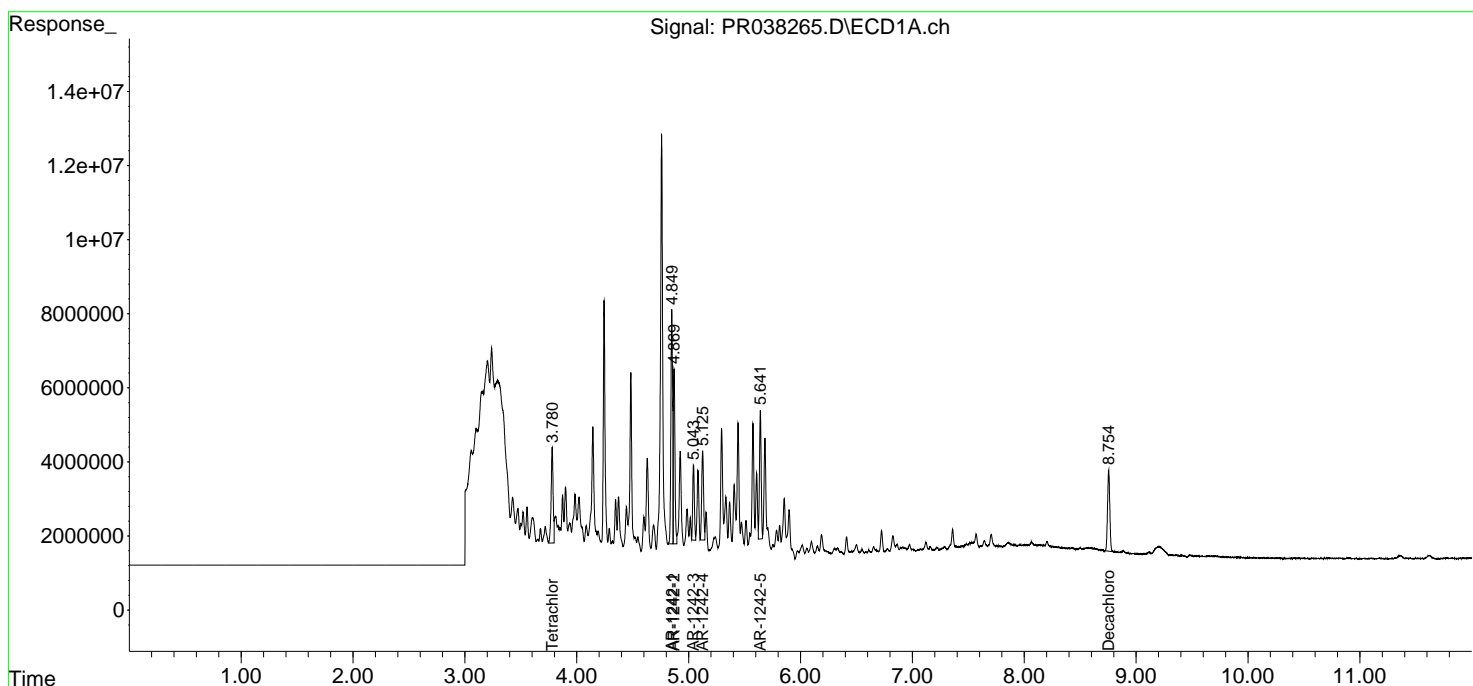
Data Path : Z:\pestpcbsrv\HPCHEM1\ECD\_R\Data\PR052319\  
 Data File : PR038265.D  
 Signal(s) : Signal #1: ECD1A.ch Signal #2: ECD2B.ch  
 Acq On : 24 May 2019 02:19  
 Operator : SM\MA  
 Sample : K2959-02  
 Misc :  
 ALS Vial : 22 Sample Multiplier: 1

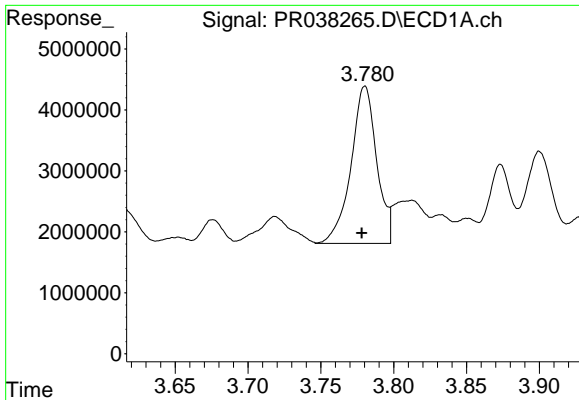
**Instrument :**  
 ECD\_R  
**Client Sampled :**  
 20658

**Manual Integrations**  
**APPROVED**  
 Ankita  
 5/24/2019 3:13:24 PM

Integration File signal 1: autoint1.e  
 Integration File signal 2: autoint2.e  
 Quant Time: May 24 08:07:06 2019  
 Quant Method : Z:\pestpcbsrv\HPCHEM1\ECD\_R\Method\PR052319.M  
 Quant Title : GC EXTRACTABLES  
 QLast Update : Fri May 24 07:01:56 2019  
 Response via : Initial Calibration  
 Integrator: ChemStation

Volume Inj. : 2 µl  
 Signal #1 Phase : ZB-MR1 Signal #2 Phase: ZB-MR2  
 Signal #1 Info : 30Mx0.32mmx 0.50µ Signal #2 Info : 30M x 0.32mm x 0.25µm

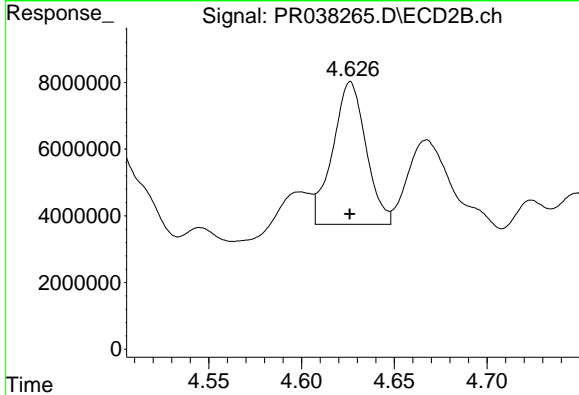




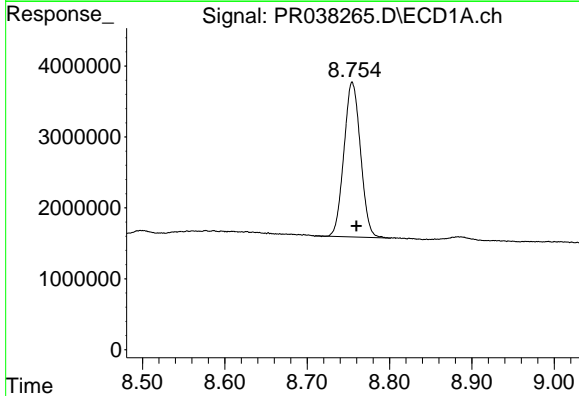
#1 Tetrachloro-m-xylene  
 R.T.: 3.780 min  
 Delta R.T.: 0.002 min  
 Response: 31784975  
 Conc: 18.95 ng/ml m

Instrument :  
 ECD\_R  
 ClientSampleId :  
 20658

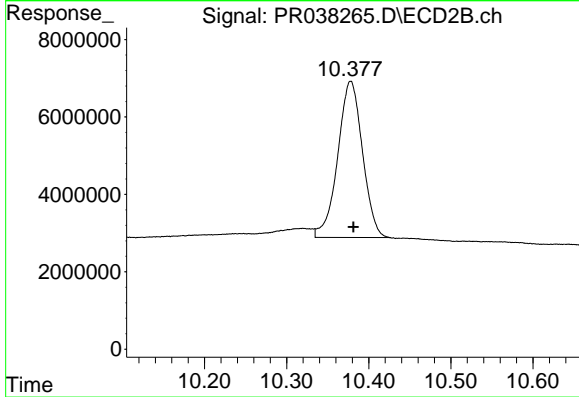
Manual Integrations  
 APPROVED  
 Ankita  
 5/24/2019 3:13:24 PM



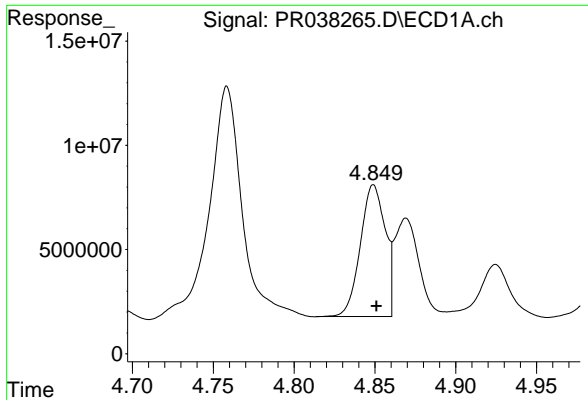
#1 Tetrachloro-m-xylene  
 R.T.: 4.626 min  
 Delta R.T.: 0.000 min  
 Response: 53267756  
 Conc: 10.50 ng/ml m



#2 Decachlorobiphenyl  
 R.T.: 8.755 min  
 Delta R.T.: -0.005 min  
 Response: 30489513  
 Conc: 15.72 ng/ml



#2 Decachlorobiphenyl  
 R.T.: 10.377 min  
 Delta R.T.: -0.004 min  
 Response: 84246548  
 Conc: 19.10 ng/ml m

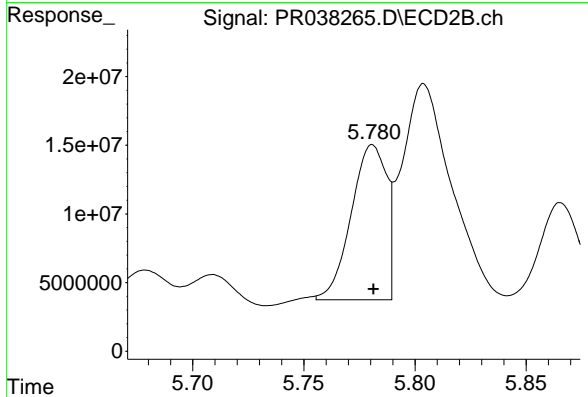


#16 AR-1242-1

R.T.: 4.849 min  
 Delta R.T.: -0.002 min  
 Response: 68713329  
 Conc: 1011.79 ng/ml m

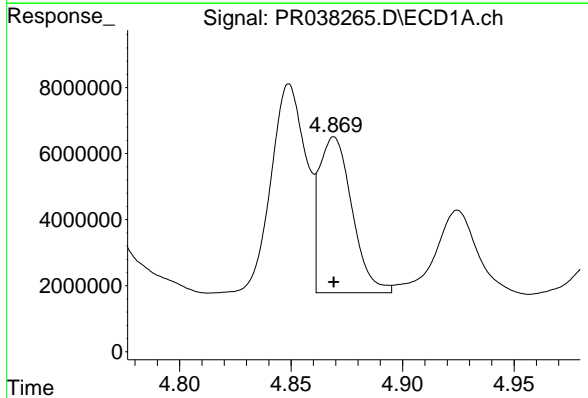
**Instrument :**  
 ECD\_R  
**ClientSampled :**  
 20658

**Manual Integrations**  
**APPROVED**  
 Ankita  
 5/24/2019 3:13:24 PM



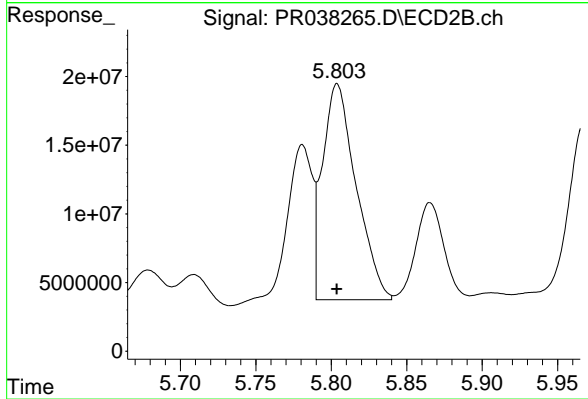
#16 AR-1242-1

R.T.: 5.780 min  
 Delta R.T.: 0.000 min  
 Response: 126226994  
 Conc: 719.78 ng/ml m



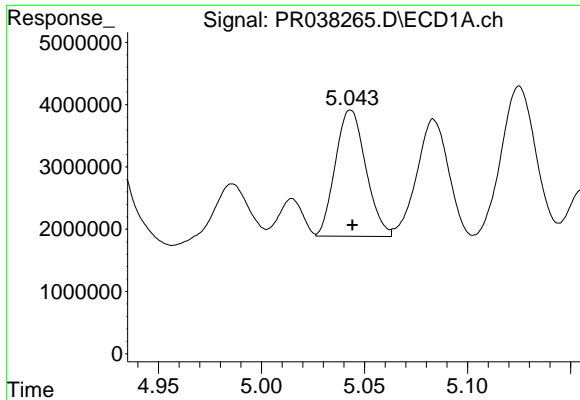
#17 AR-1242-2

R.T.: 4.869 min  
 Delta R.T.: 0.000 min  
 Response: 47535614  
 Conc: 510.76 ng/ml m



#17 AR-1242-2

R.T.: 5.803 min  
 Delta R.T.: 0.000 min  
 Response: 241619671  
 Conc: 957.55 ng/ml m

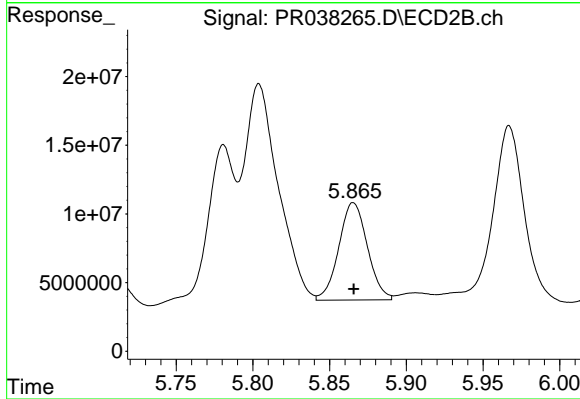


#18 AR-1242-3

R.T.: 5.043 min  
 Delta R.T.: -0.001 min  
 Response: 20899632  
 Conc: 424.44 ng/ml m

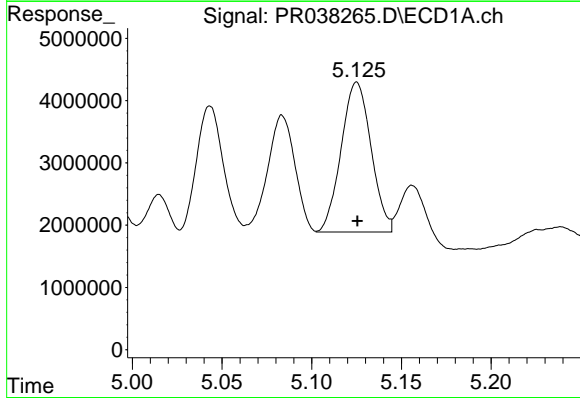
**Instrument :**  
 ECD\_R  
**ClientSampled :**  
 20658

**Manual Integrations**  
**APPROVED**  
 Ankita  
 5/24/2019 3:13:24 PM



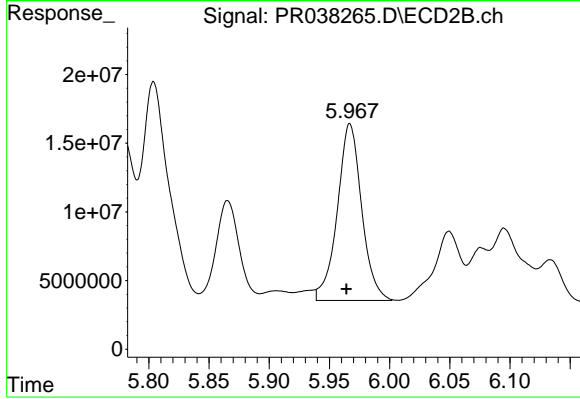
#18 AR-1242-3

R.T.: 5.865 min  
 Delta R.T.: 0.000 min  
 Response: 92013443  
 Conc: 605.51 ng/ml m



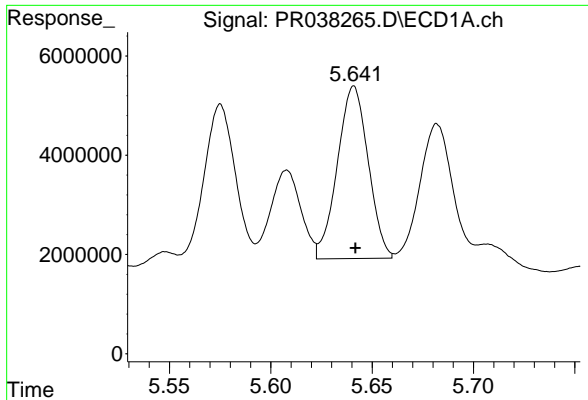
#19 AR-1242-4

R.T.: 5.125 min  
 Delta R.T.: 0.000 min  
 Response: 27902973  
 Conc: 598.32 ng/ml m



#19 AR-1242-4

R.T.: 5.967 min  
 Delta R.T.: 0.002 min  
 Response: 180939294  
 Conc: 1434.63 ng/ml m



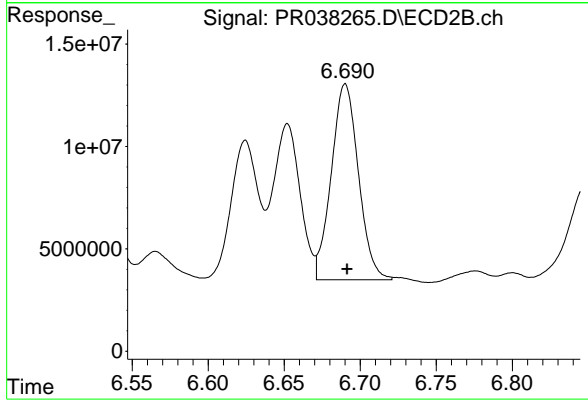
#20 AR-1242-5

R.T.: 5.641 min  
Delta R.T.: 0.000 min  
Response: 36771260  
Conc: 585.29 ng/ml m

Instrument :  
ECD\_R  
ClientSampled :  
20658

Manual Integrations  
APPROVED

Ankita  
5/24/2019 3:13:24 PM



#20 AR-1242-5

R.T.: 6.690 min  
Delta R.T.: -0.001 min  
Response: 118535754  
Conc: 862.63 ng/ml m