

Data Path : Z:\pestpcbsrv\HPCHEM1\ECD_R\Data\PR052319\
 Data File : PR038266.D
 Signal(s) : Signal #1: ECD1A.ch Signal #2: ECD2B.ch
 Acq On : 24 May 2019 02:33
 Operator : SM\MA
 Sample : K2959-03
 Misc :
 ALS Vial : 23 Sample Multiplier: 1

Instrument :
 ECD_R
 ClientSampleId :
 20659

Integration File signal 1: autoint1.e
 Integration File signal 2: autoint2.e
 Quant Time: May 24 08:07:56 2019
 Quant Method : Z:\pestpcbsrv\HPCHEM1\ECD_R\Method\PR052319.M
 Quant Title : GC EXTRACTABLES
 QLast Update : Fri May 24 07:01:56 2019
 Response via : Initial Calibration
 Integrator: ChemStation

Volume Inj. : 2 µl
 Signal #1 Phase : ZB-MR1 Signal #2 Phase: ZB-MR2
 Signal #1 Info : 30Mx0.32mmx 0.50µ Signal #2 Info : 30M x 0.32mm x 0.25µm

Compound	RT#1	RT#2	Resp#1	Resp#2	ng/ml	ng/ml

System Monitoring Compounds						
1) SA Tetrachlo...	3.778	4.626	25016785	73445579	14.918	14.476
2) SA Decachlor...	8.754	10.377	20046093	55906040	10.334	12.674
Target Compounds						
16) L4 AR-1242-1	4.849	5.781	17945235	37634404	264.240	214.603
17) L4 AR-1242-2	4.869	5.803	15058058	59535141	161.794	235.939 #
18) L4 AR-1242-3	5.043	5.865	6963790	29226731	141.425	192.330 #
19) L4 AR-1242-4	5.125	5.966	7348238	46573121	157.568	369.268 #
20) L4 AR-1242-5	5.641	6.690	12537861	29887309	199.567	217.502

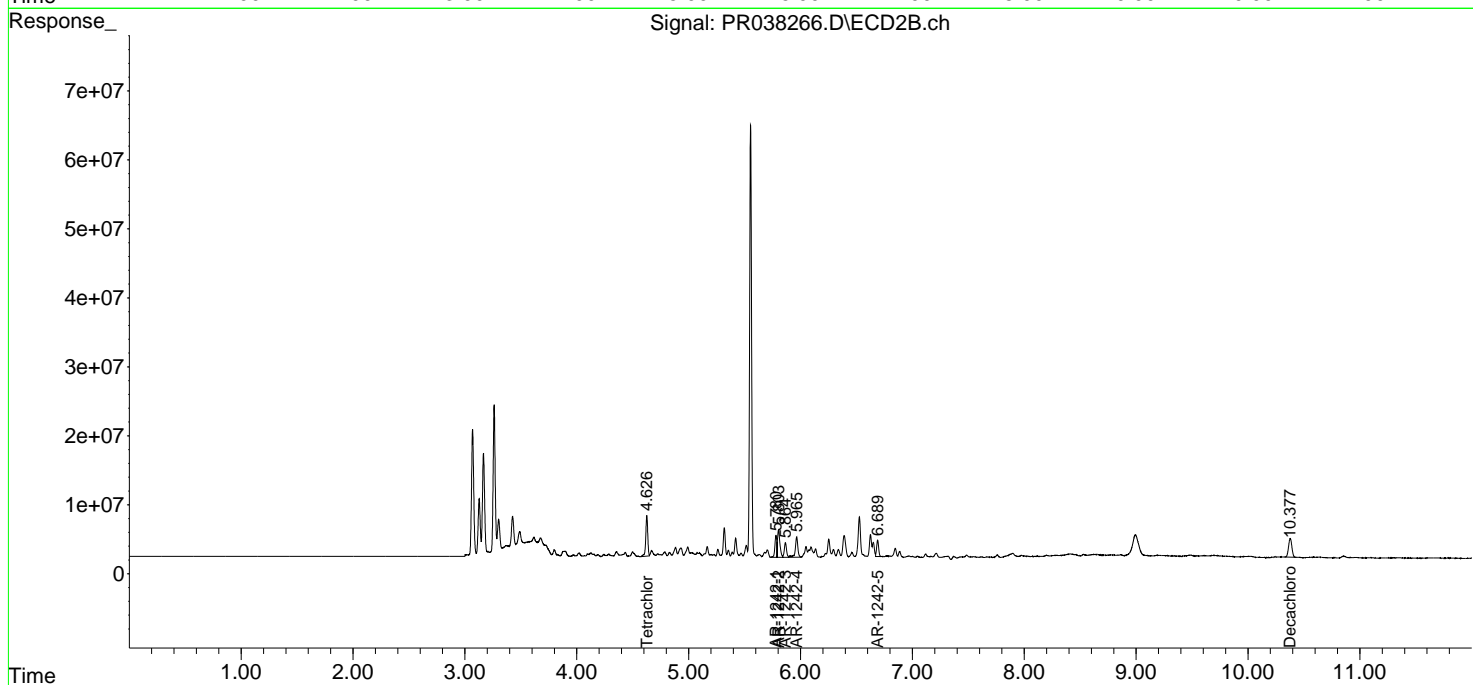
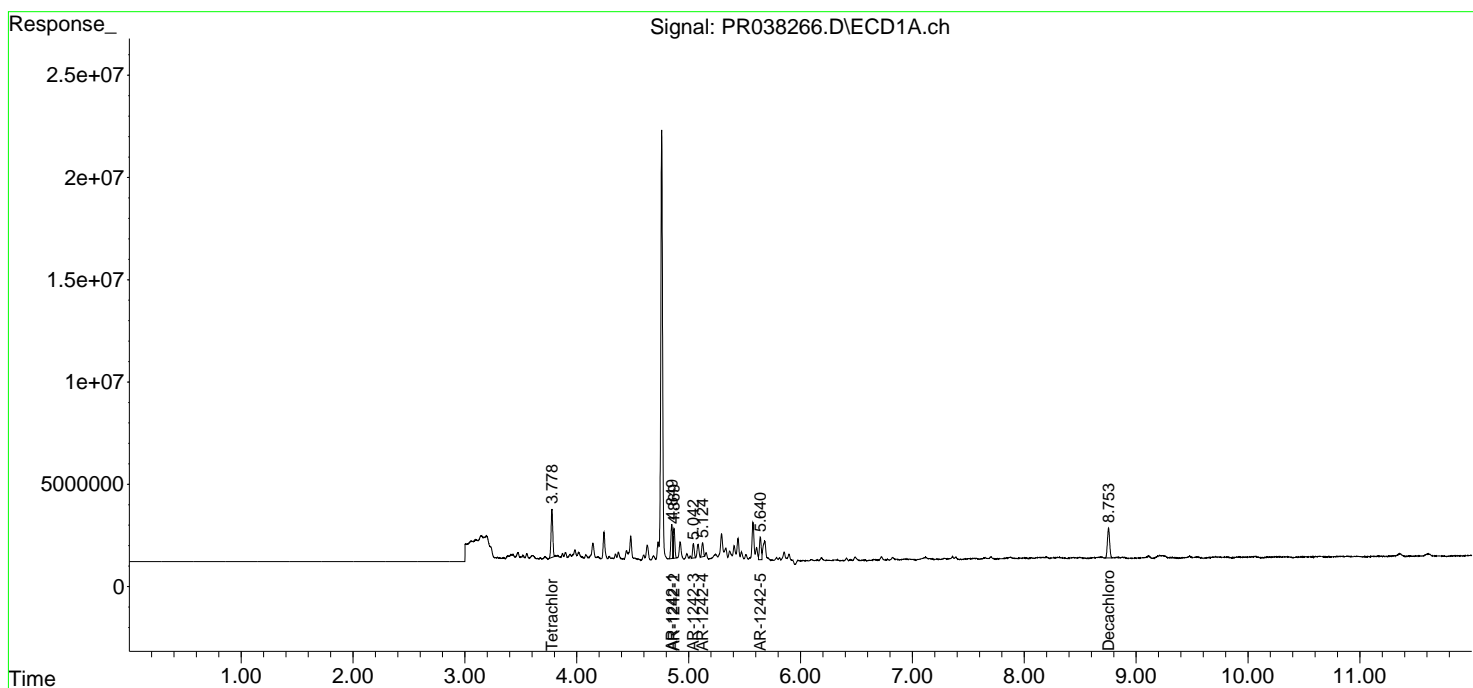
(f)=RT Delta > 1/2 Window (#)=Amounts differ by > 25% (m)=manual int.

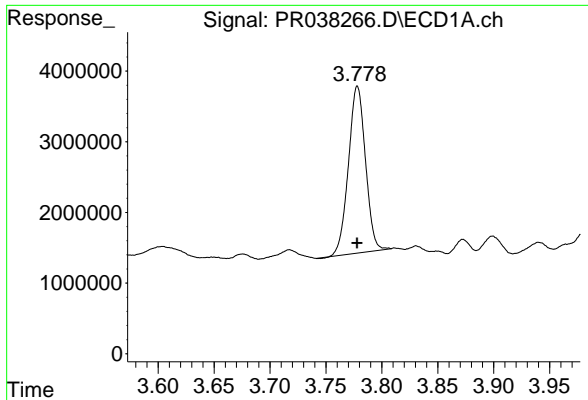
Data Path : Z:\pestpcbsrv\HPCHEM1\ECD_R\Data\PR052319\
 Data File : PR038266.D
 Signal(s) : Signal #1: ECD1A.ch Signal #2: ECD2B.ch
 Acq On : 24 May 2019 02:33
 Operator : SM\MA
 Sample : K2959-03
 Misc :
 ALS Vial : 23 Sample Multiplier: 1

Instrument :
 ECD_R
 ClientSampled :
 20659

Integration File signal 1: autoint1.e
 Integration File signal 2: autoint2.e
 Quant Time: May 24 08:07:56 2019
 Quant Method : Z:\pestpcbsrv\HPCHEM1\ECD_R\Method\PR052319.M
 Quant Title : GC EXTRACTABLES
 QLast Update : Fri May 24 07:01:56 2019
 Response via : Initial Calibration
 Integrator: ChemStation

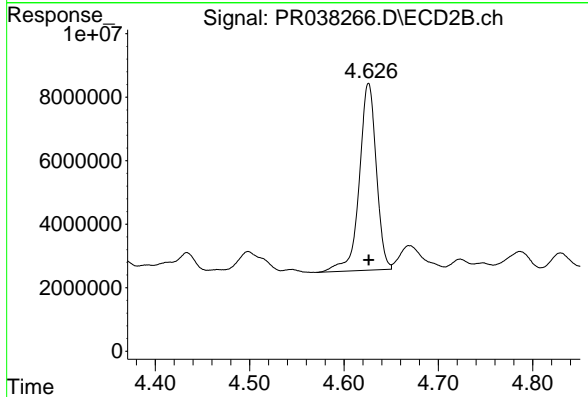
Volume Inj. : 2 µl
 Signal #1 Phase : ZB-MR1 Signal #2 Phase: ZB-MR2
 Signal #1 Info : 30Mx0.32mmx 0.50µ Signal #2 Info : 30M x 0.32mm x 0.25µm



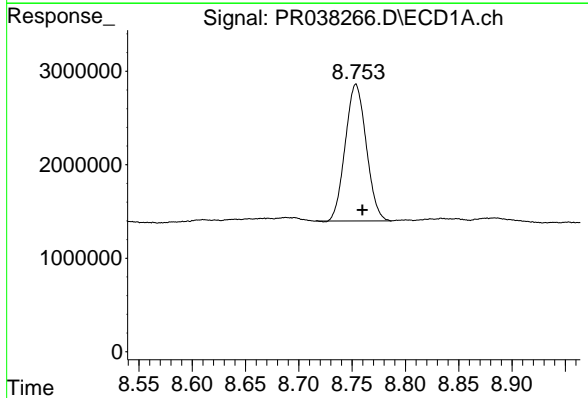


#1 Tetrachloro-m-xylene
 R.T.: 3.778 min
 Delta R.T.: 0.000 min
 Response: 25016785
 Conc: 14.92 ng/ml

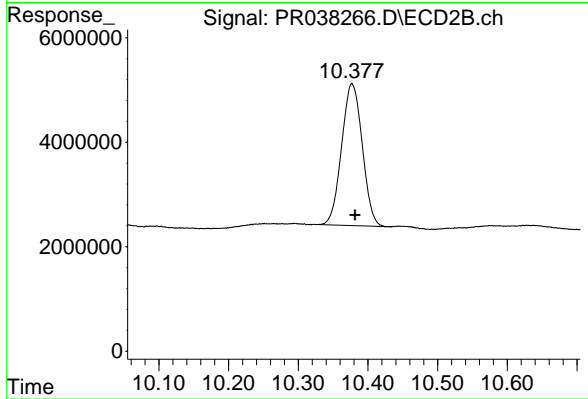
Instrument :
 ECD_R
 ClientSampled :
 20659



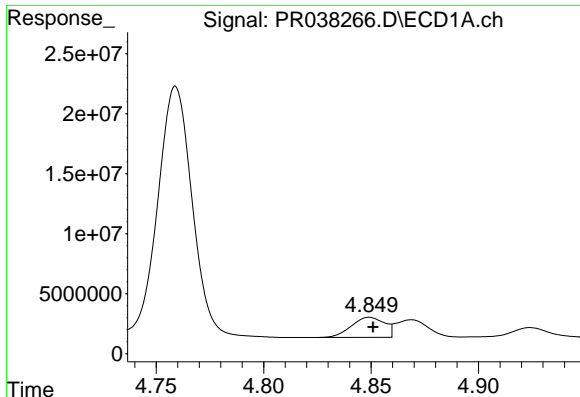
#1 Tetrachloro-m-xylene
 R.T.: 4.626 min
 Delta R.T.: 0.000 min
 Response: 73445579
 Conc: 14.48 ng/ml



#2 Decachlorobiphenyl
 R.T.: 8.754 min
 Delta R.T.: -0.006 min
 Response: 20046093
 Conc: 10.33 ng/ml



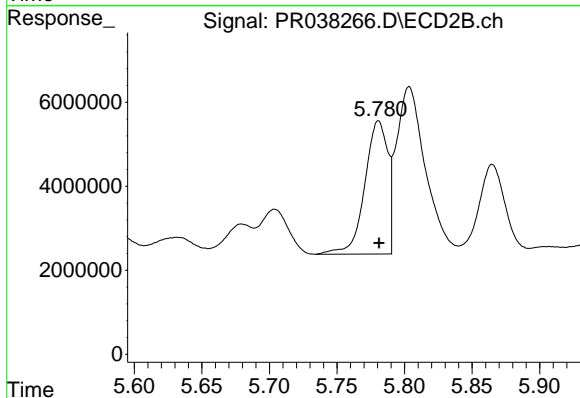
#2 Decachlorobiphenyl
 R.T.: 10.377 min
 Delta R.T.: -0.004 min
 Response: 55906040
 Conc: 12.67 ng/ml



#16 AR-1242-1

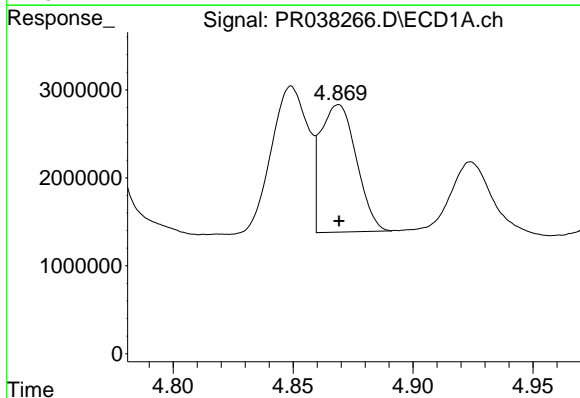
R.T.: 4.849 min
 Delta R.T.: -0.002 min
 Response: 17945235
 Conc: 264.24 ng/ml

Instrument :
 ECD_R
 ClientSampleId :
 20659



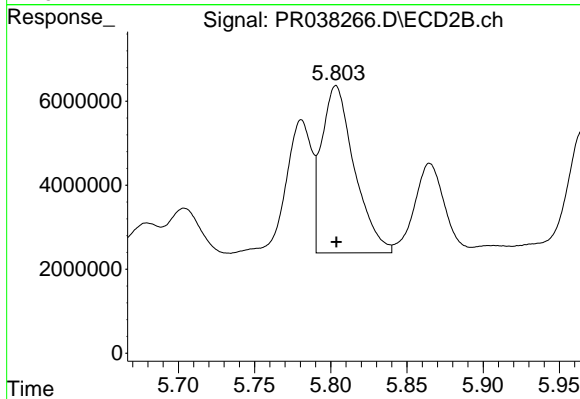
#16 AR-1242-1

R.T.: 5.781 min
 Delta R.T.: 0.000 min
 Response: 37634404
 Conc: 214.60 ng/ml



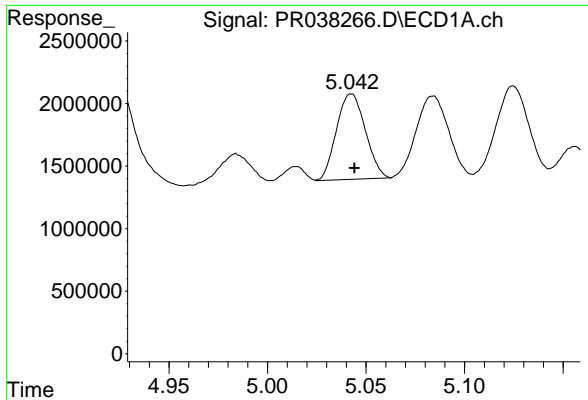
#17 AR-1242-2

R.T.: 4.869 min
 Delta R.T.: 0.000 min
 Response: 15058058
 Conc: 161.79 ng/ml



#17 AR-1242-2

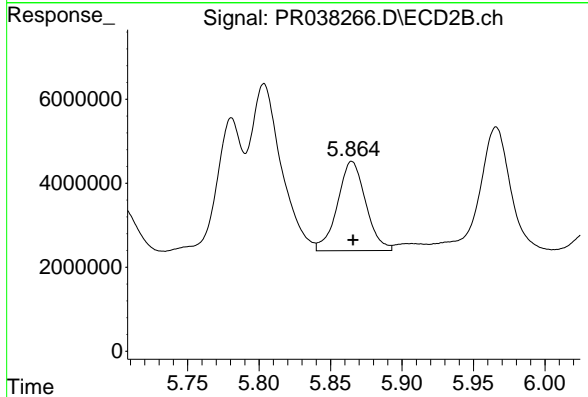
R.T.: 5.803 min
 Delta R.T.: 0.000 min
 Response: 59535141
 Conc: 235.94 ng/ml



#18 AR-1242-3

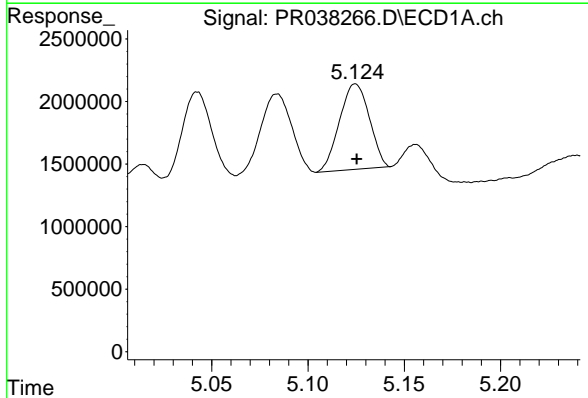
R.T.: 5.043 min
 Delta R.T.: -0.002 min
 Response: 6963790
 Conc: 141.43 ng/ml

Instrument :
 ECD_R
 ClientSampled :
 20659



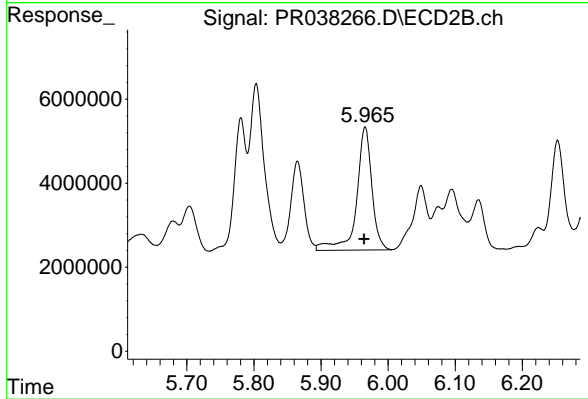
#18 AR-1242-3

R.T.: 5.865 min
 Delta R.T.: 0.000 min
 Response: 29226731
 Conc: 192.33 ng/ml



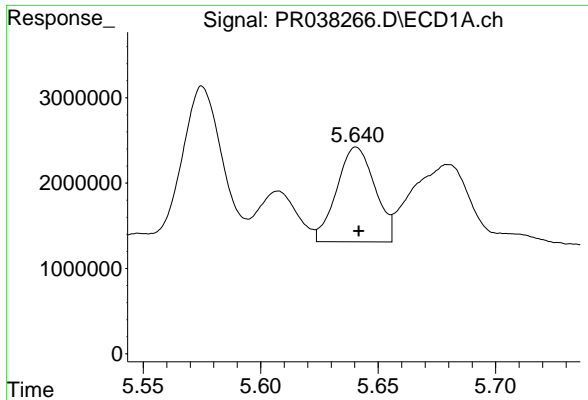
#19 AR-1242-4

R.T.: 5.125 min
 Delta R.T.: 0.000 min
 Response: 7348238
 Conc: 157.57 ng/ml



#19 AR-1242-4

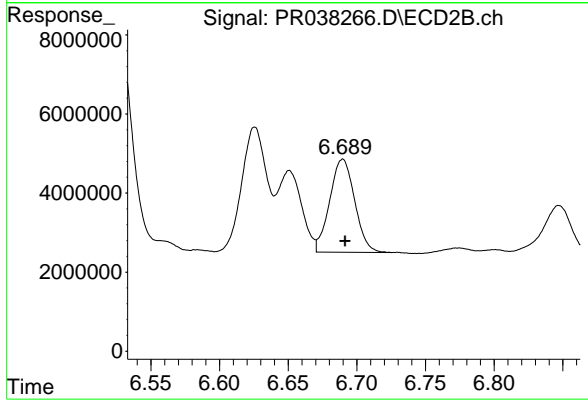
R.T.: 5.966 min
 Delta R.T.: 0.002 min
 Response: 46573121
 Conc: 369.27 ng/ml



#20 AR-1242-5

R.T.: 5.641 min
Delta R.T.: 0.000 min
Response: 12537861
Conc: 199.57 ng/ml

Instrument :
ECD_R
ClientSampleId :
20659



#20 AR-1242-5

R.T.: 6.690 min
Delta R.T.: -0.002 min
Response: 29887309
Conc: 217.50 ng/ml