

Data Path : Z:\pestpcbsrv\HPCHEM1\ECD_R\Data\PR061020\
 Data File : PR045789.D
 Signal(s) : Signal #1: ECD1A.ch Signal #2: ECD2B.ch
 Acq On : 11 Jun 2020 07:30
 Operator : AJ\MA
 Sample : L2966-02
 Misc :
 ALS Vial : 21 Sample Multiplier: 1

Instrument :
 ECD_R
 ClientSampled :

Integration File signal 1: autoint1.e
 Integration File signal 2: autoint2.e
 Quant Time: Jun 11 16:34:34 2020
 Quant Method : Z:\pestpcbsrv\HPCHEM1\ECD_R\Method\PR060920CLP.M
 Quant Title : GC EXTRACTABLES
 QLast Update : Wed Jun 10 18:51:27 2020
 Response via : Initial Calibration
 Integrator: ChemStation

Volume Inj. : 1 µl
 Signal #1 Phase : ZB MR1 Signal #2 Phase: ZB MR2
 Signal #1 Info : 30Mx0.32mmx 0.5µm Signal #2 Info : 30M x 0.32mm x 0.25µm

Compound	RT#1	RT#2	Resp#1	Resp#2	ng/ml	ng/ml
System Monitoring Compounds						
1) SA Tetrachlo...	4.774	3.996	33218697	266.7E6	24.749	27.937
2) SA Decachlor...	10.784	9.126	67290307	534.0E6	41.492	44.529
Target Compounds						
3) L1 AR-1016-1	5.963	5.095	29677570	235.1E6	582.741	598.356
4) L1 AR-1016-2	5.987	5.115	80522948	556.4E6	1096.844	1115.138
5) L1 AR-1016-3	6.055	5.295	6789245	332.7E6	153.565	1246.308 #
6) L1 AR-1016-4	6.150	5.333	45356609	1063.2E6	1225.991	4929.213 #
7) L1 AR-1016-5	6.445	5.551	128.8E6	1147.6E6	3613.430	3987.319
8) L2 AR-1221-1	5.044f	4.195	87576	3077548	6.183	35.677 #
9) L2 AR-1221-2	5.090	4.302	641941	4088111	71.506	53.339 #
10) L2 AR-1221-3	5.161	4.373	572382	1508776	19.037	6.701 #
11) L3 AR-1232-1	5.161	4.373	572382	1508776	20.231	7.261 #
12) L3 AR-1232-2	5.692	5.115	22975281	556.4E6	1387.786	2634.744 #
13) L3 AR-1232-3	5.987	5.295	80522948	332.7E6	2569.215	2952.469
14) L3 AR-1232-4	6.150	5.376	45356609	889.2E6	2892.237	8567.697 #
15) L3 AR-1232-5	6.235	5.551	141.2E6	1147.6E6	11395.029	10140.790
16) L4 AR-1242-1	5.963	5.095	29677570	235.1E6	556.024	559.702
17) L4 AR-1242-2	5.987	5.115	80522948	556.4E6	1050.820	1024.353
18) L4 AR-1242-3	6.055	5.295	6789245	332.7E6	145.568	1137.468 #
19) L4 AR-1242-4	6.150	5.376	45356609	889.2E6	1181.965	3111.218 #
20) L4 AR-1242-5	6.892	5.905	276.9E6	1872.4E6	6368.117	4852.497
21) L5 AR-1248-1	5.963	5.095	29677570	235.1E6	739.000	731.991
22) L5 AR-1248-2	6.235	5.333	141.2E6	1063.2E6	2562.946	2679.847
23) L5 AR-1248-3	6.445	5.376	128.8E6	889.2E6	2098.973	2167.407
24) L5 AR-1248-4	6.852	5.551	174.8E6	1147.6E6	2382.297	2271.274
25) L5 AR-1248-5	6.892	5.947	276.9E6	1958.2E6	3982.996	3789.813
26) L6 AR-1254-1	6.824	5.905	173.0E6	1872.4E6	2423.104	2376.501
27) L6 AR-1254-2	7.049	6.053	273.8E6	1061.6E6	2438.396	1547.789 #
28) L6 AR-1254-3	7.416	6.462	203.4E6	1778.6E6	1667.277	1551.355
29) L6 AR-1254-4	7.703	6.690	144.7E6	1167.4E6	1527.080	1553.131
30) L6 AR-1254-5	8.128	7.109	127.0E6	4086.1E6	1242.293	4093.349 #
31) L7 AR-1260-1	7.576	6.594	30632043	356.8E6	429.467	648.482 #
32) L7 AR-1260-2	7.832	6.781	166.7E6	436.6E6	1873.663	632.861 #
33) L7 AR-1260-3	8.195	6.936	19472947	361.0E6	283.957	572.562 #
34) L7 AR-1260-4	8.438	7.415	44221592	244.1E6	545.024	443.424
35) L7 AR-1260-5	8.789	7.650	41527188	542.2E6	237.336	372.803 #
36) L8 AR-1262-1	8.259	7.109	6857512	4086.1E6	127.820	6962.900 #
37) L8 AR-1262-2	8.789	7.650	41527188	542.2E6	164.150	244.239 #
38) L8 AR-1262-3	9.154	7.938	30643458	108.3E6	276.825	115.643 #
39) L8 AR-1262-4	9.209	8.001	15358247	302.5E6	118.651	180.983 #
40) L8 AR-1262-5	9.957	8.521	12895487	111.2E6	131.454	130.504
41) L9 AR-1268-1	9.154	7.938	30643458	108.3E6	110.617	45.797 #

Data Path : Z:\pestpcbsrv\HPCHEM1\ECD_R\Data\PR061020\
 Data File : PR045789.D
 Signal(s) : Signal #1: ECD1A.ch Signal #2: ECD2B.ch
 Acq On : 11 Jun 2020 07:30
 Operator : AJ\MA
 Sample : L2966-02
 Misc :
 ALS Vial : 21 Sample Multiplier: 1

Instrument :
 ECD_R
 ClientSampleId :

Integration File signal 1: autoint1.e
 Integration File signal 2: autoint2.e
 Quant Time: Jun 11 16:34:34 2020
 Quant Method : Z:\pestpcbsrv\HPCHEM1\ECD_R\Method\PR060920CLP.M
 Quant Title : GC EXTRACTABLES
 QLast Update : Wed Jun 10 18:51:27 2020
 Response via : Initial Calibration
 Integrator: ChemStation

Volume Inj. : 1 µl
 Signal #1 Phase : ZB MR1 Signal #2 Phase: ZB MR2
 Signal #1 Info : 30Mx0.32mmx 0.5µm Signal #2 Info : 30M x 0.32mm x 0.25µm

	Compound	RT#1	RT#2	Resp#1	Resp#2	ng/ml	ng/ml
42)	L9 AR-1268-2	9.209	8.001	15358247	302.5E6	59.258	133.169 #
43)	L9 AR-1268-3	9.477	8.219	1362407	15983209	6.289	8.429 #
44)	L9 AR-1268-4	9.957	8.521	12895487	111.2E6	129.192	131.859
45)	L9 AR-1268-5	10.411	8.842	4894785	33196930	6.464	5.444

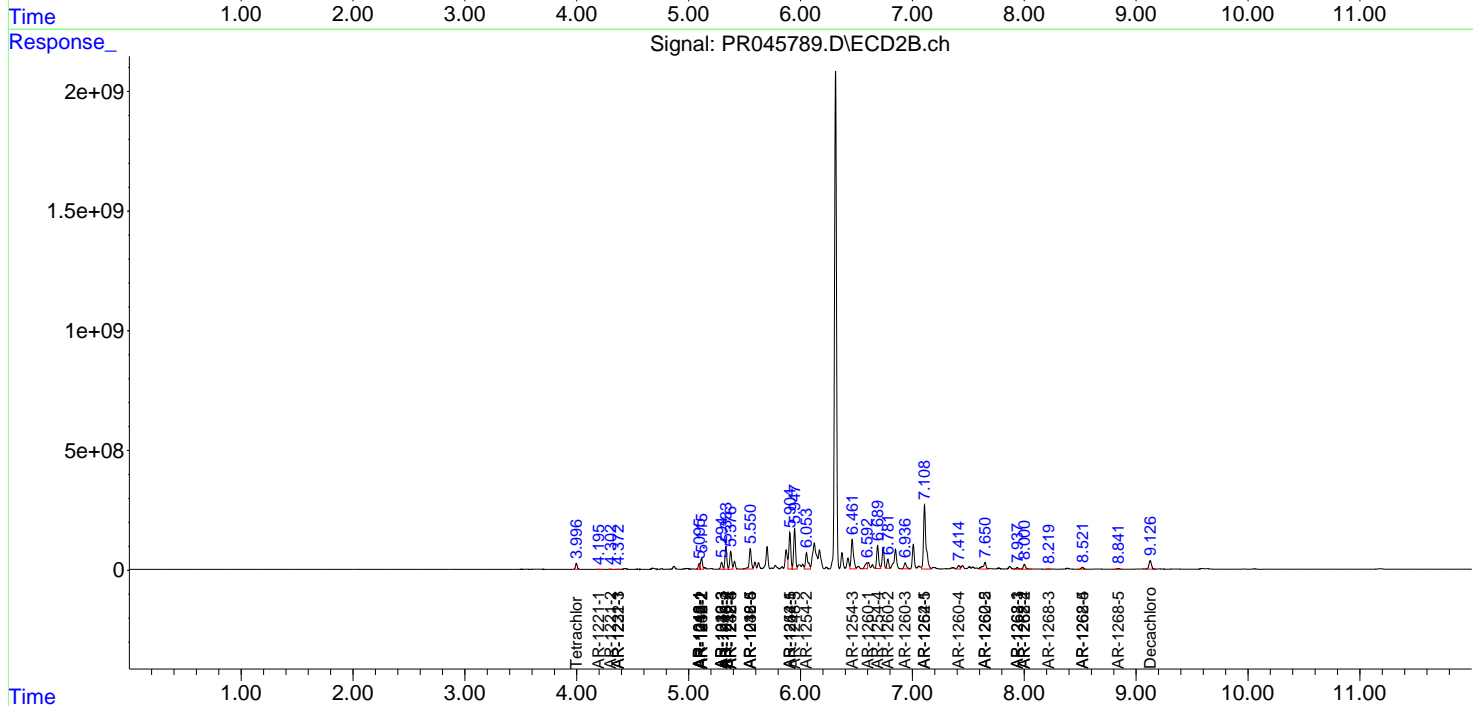
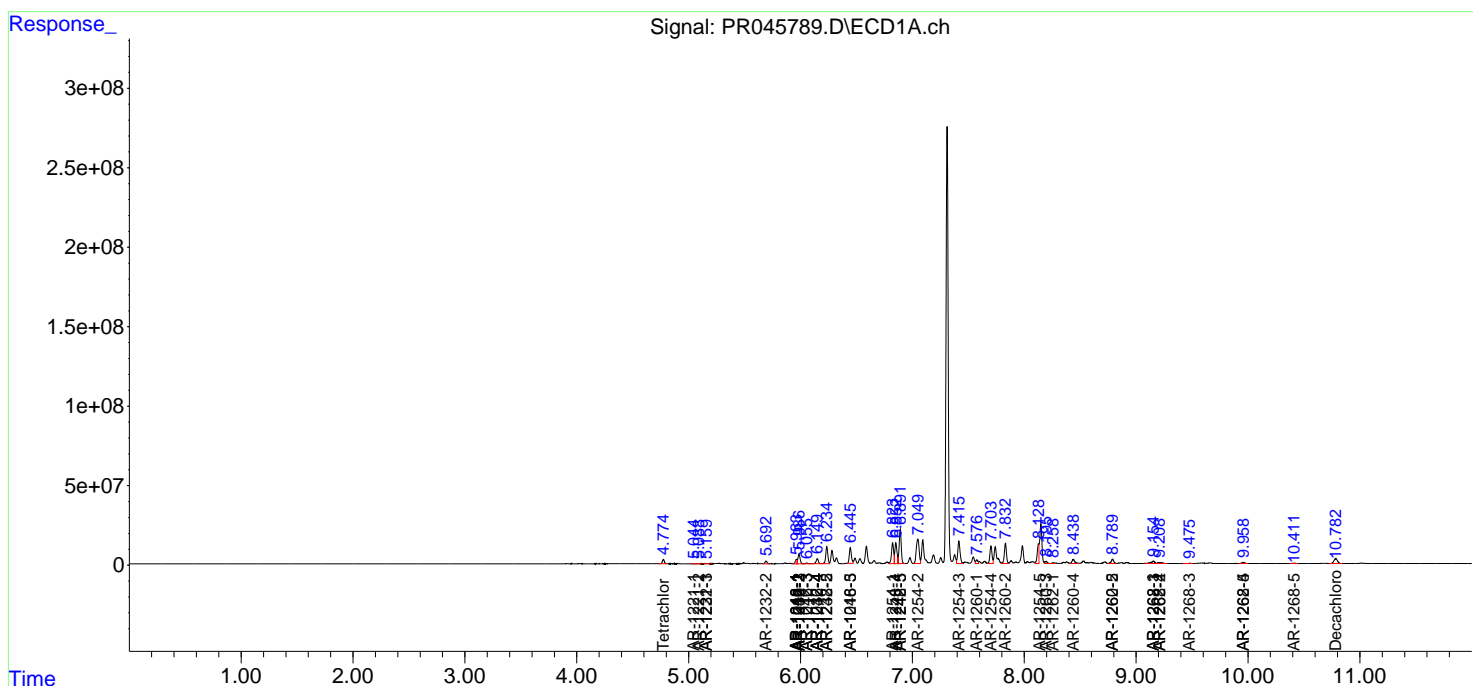
(f)=RT Delta > 1/2 Window (#)=Amounts differ by > 25% (m)=manual int.

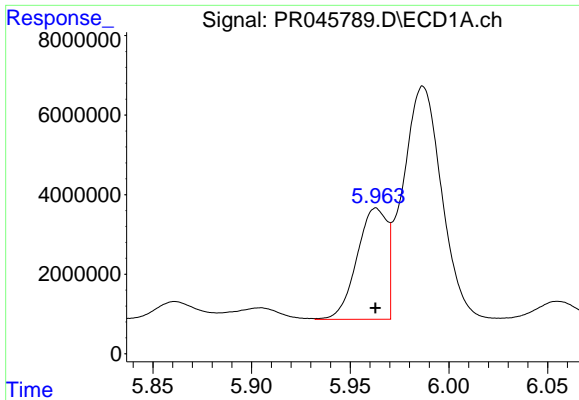
Data Path : Z:\pestpcbsrv\HPCHEM1\ECD_R\Data\PR061020\
 Data File : PR045789.D
 Signal(s) : Signal #1: ECD1A.ch Signal #2: ECD2B.ch
 Acq On : 11 Jun 2020 07:30
 Operator : AJ\MA
 Sample : L2966-02
 Misc :
 ALS Vial : 21 Sample Multiplier: 1

Instrument :
 ECD_R
 ClientSampled :

Integration File signal 1: autoint1.e
 Integration File signal 2: autoint2.e
 Quant Time: Jun 11 16:34:34 2020
 Quant Method : Z:\pestpcbsrv\HPCHEM1\ECD_R\Method\PR060920CLP.M
 Quant Title : GC EXTRACTABLES
 QLast Update : Wed Jun 10 18:51:27 2020
 Response via : Initial Calibration
 Integrator: ChemStation

Volume Inj. : 1 µl
 Signal #1 Phase : ZB MR1 Signal #2 Phase: ZB MR2
 Signal #1 Info : 30Mx0.32mmx 0.5µm Signal #2 Info : 30M x 0.32mm x 0.25µm

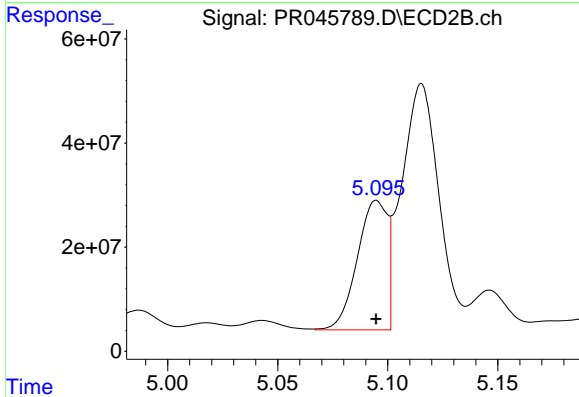




#3 AR-1016-1

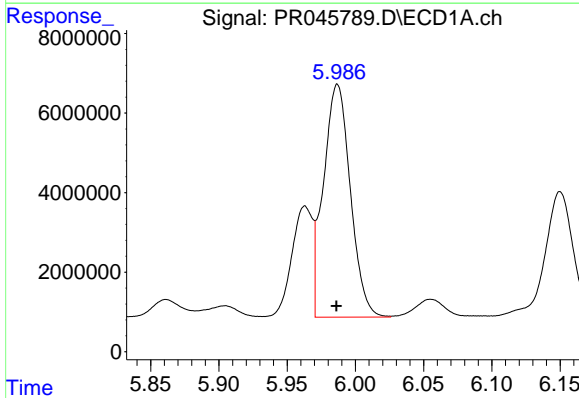
R.T.: 5.963 min
 Delta R.T.: 0.000 min
 Response: 29677570
 Conc: 582.74 ng/ml

Instrument :
 ECD_R
 ClientSampleId :



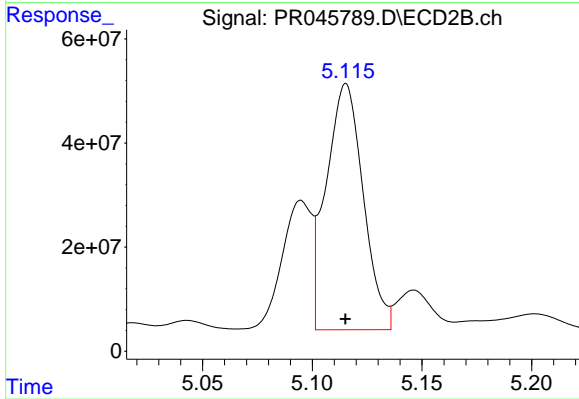
#3 AR-1016-1

R.T.: 5.095 min
 Delta R.T.: 0.000 min
 Response: 235095145
 Conc: 598.36 ng/ml



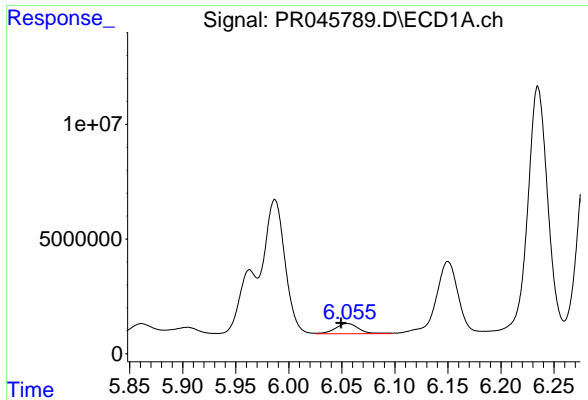
#4 AR-1016-2

R.T.: 5.987 min
 Delta R.T.: 0.000 min
 Response: 80522948
 Conc: 1096.84 ng/ml



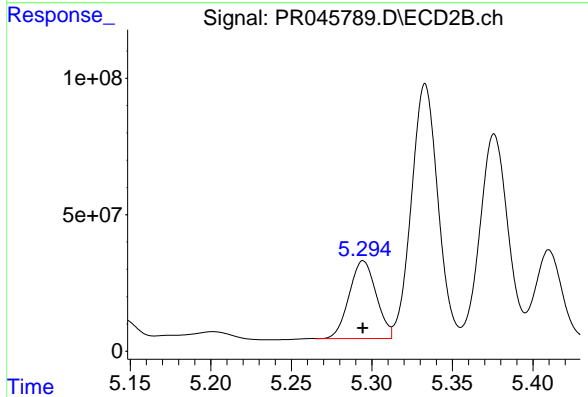
#4 AR-1016-2

R.T.: 5.115 min
 Delta R.T.: 0.000 min
 Response: 556434812
 Conc: 1115.14 ng/ml

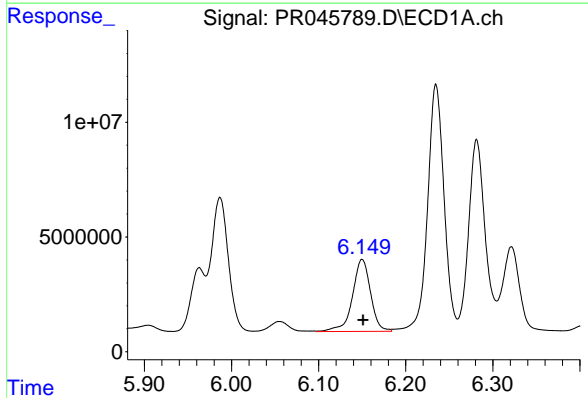


#5 AR-1016-3
 R.T.: 6.055 min
 Delta R.T.: 0.006 min
 Response: 6789245
 Conc: 153.56 ng/ml

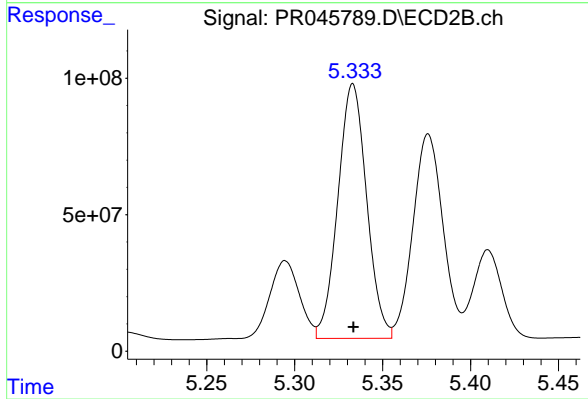
Instrument :
 ECD_R
 ClientSampleId :



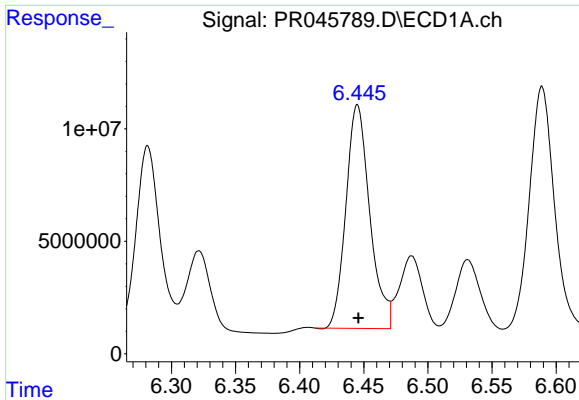
#5 AR-1016-3
 R.T.: 5.295 min
 Delta R.T.: 0.000 min
 Response: 332674843
 Conc: 1246.31 ng/ml



#6 AR-1016-4
 R.T.: 6.150 min
 Delta R.T.: -0.001 min
 Response: 45356609
 Conc: 1225.99 ng/ml

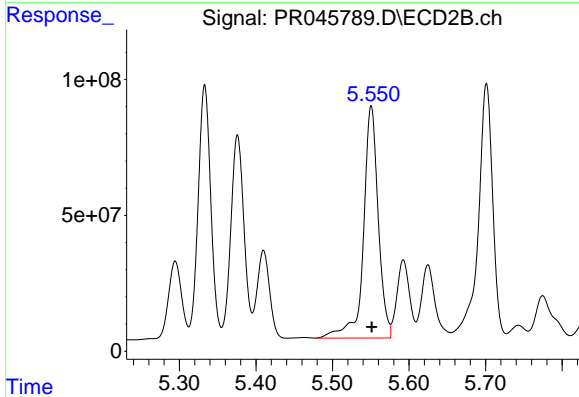


#6 AR-1016-4
 R.T.: 5.333 min
 Delta R.T.: 0.000 min
 Response: 1063150326
 Conc: 4929.21 ng/ml

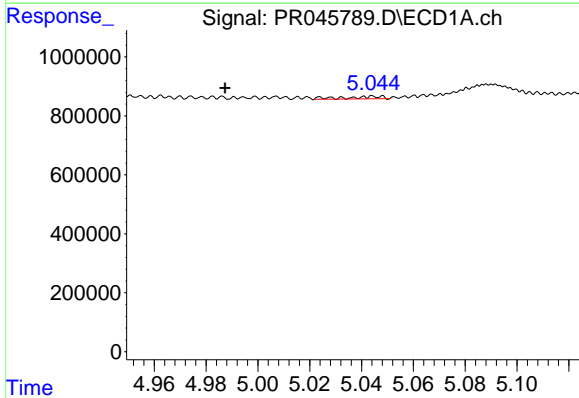


#7 AR-1016-5
 R.T.: 6.445 min
 Delta R.T.: 0.000 min
 Response: 128817176
 Conc: 3613.43 ng/ml

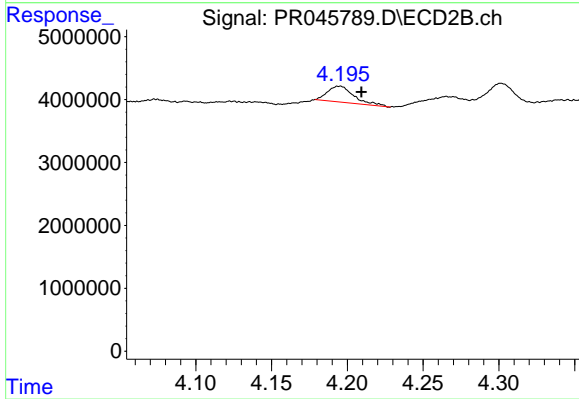
Instrument :
 ECD_R
 ClientSampleId :



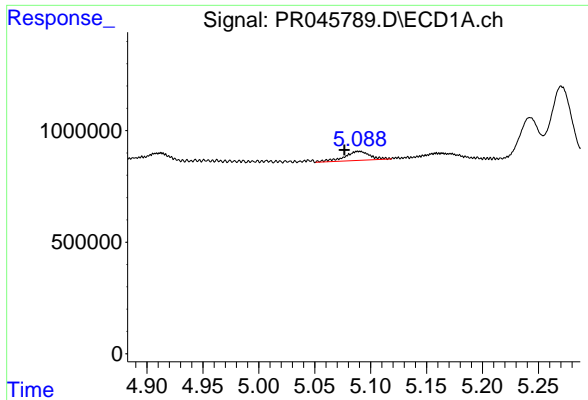
#7 AR-1016-5
 R.T.: 5.551 min
 Delta R.T.: 0.000 min
 Response: 1147585360
 Conc: 3987.32 ng/ml



#8 AR-1221-1
 R.T.: 5.044 min
 Delta R.T.: 0.057 min
 Response: 87576
 Conc: 6.18 ng/ml

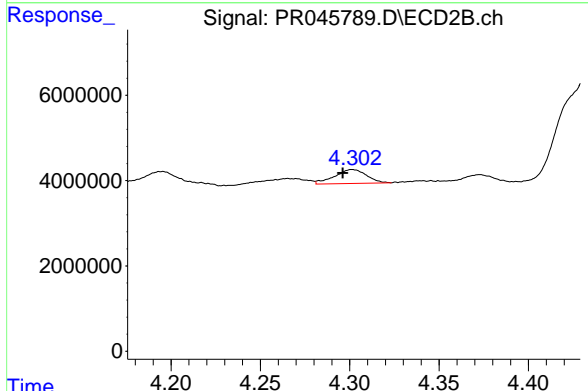


#8 AR-1221-1
 R.T.: 4.195 min
 Delta R.T.: -0.014 min
 Response: 3077548
 Conc: 35.68 ng/ml

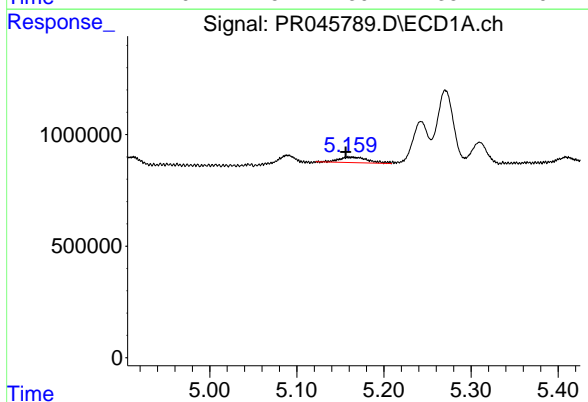


#9 AR-1221-2
 R.T.: 5.090 min
 Delta R.T.: 0.013 min
 Response: 641941
 Conc: 71.51 ng/ml

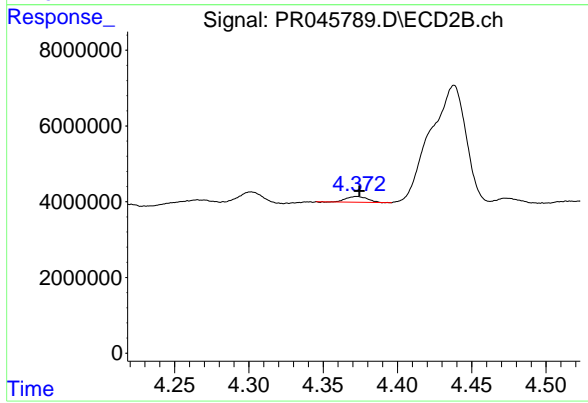
Instrument :
 ECD_R
 ClientSampled :



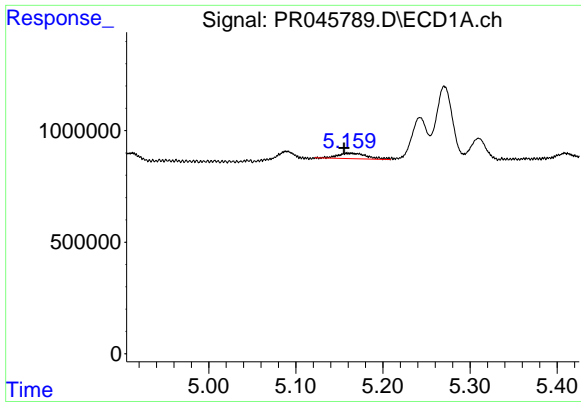
#9 AR-1221-2
 R.T.: 4.302 min
 Delta R.T.: 0.006 min
 Response: 4088111
 Conc: 53.34 ng/ml



#10 AR-1221-3
 R.T.: 5.161 min
 Delta R.T.: 0.005 min
 Response: 572382
 Conc: 19.04 ng/ml



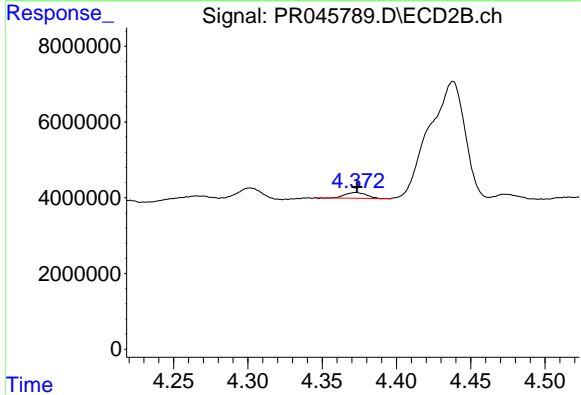
#10 AR-1221-3
 R.T.: 4.373 min
 Delta R.T.: -0.002 min
 Response: 1508776
 Conc: 6.70 ng/ml



#11 AR-1232-1

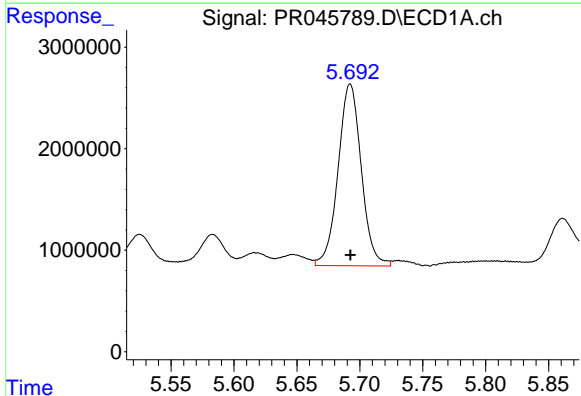
R.T.: 5.161 min
 Delta R.T.: 0.006 min
 Response: 572382
 Conc: 20.23 ng/ml

Instrument :
 ECD_R
 ClientSampled :



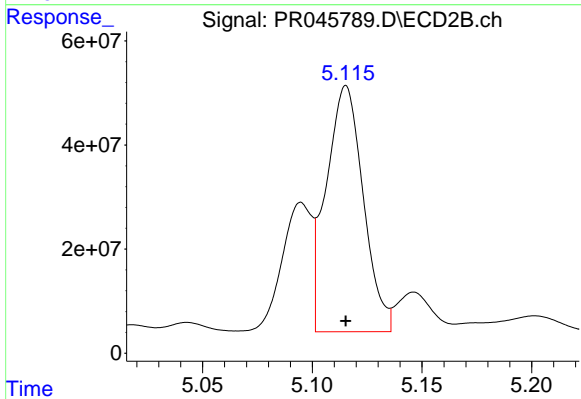
#11 AR-1232-1

R.T.: 4.373 min
 Delta R.T.: 0.000 min
 Response: 1508776
 Conc: 7.26 ng/ml



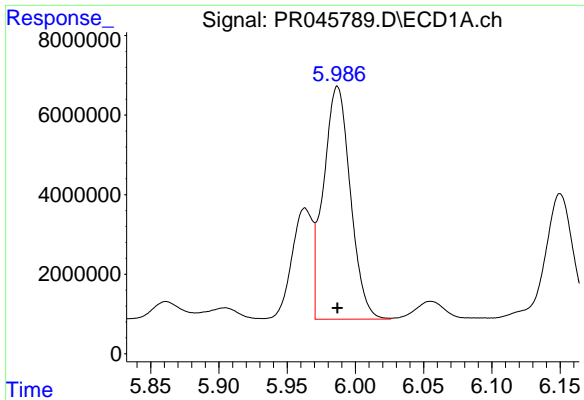
#12 AR-1232-2

R.T.: 5.692 min
 Delta R.T.: 0.000 min
 Response: 22975281
 Conc: 1387.79 ng/ml



#12 AR-1232-2

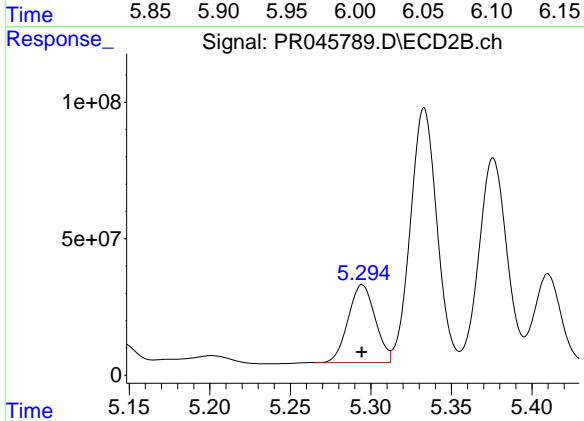
R.T.: 5.115 min
 Delta R.T.: 0.000 min
 Response: 556434812
 Conc: 2634.74 ng/ml



#13 AR-1232-3

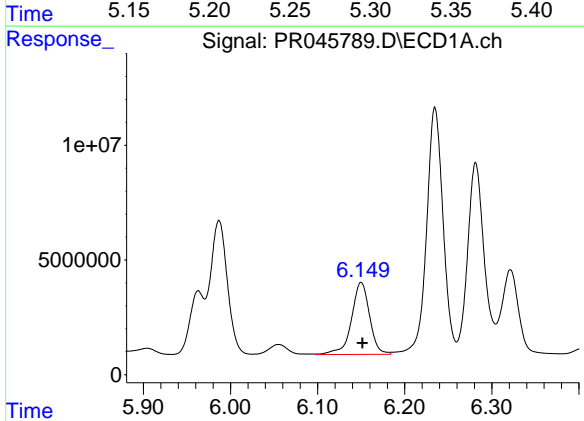
R.T.: 5.987 min
 Delta R.T.: 0.000 min
 Response: 80522948
 Conc: 2569.22 ng/ml

Instrument :
 ECD_R
 ClientSampleId :



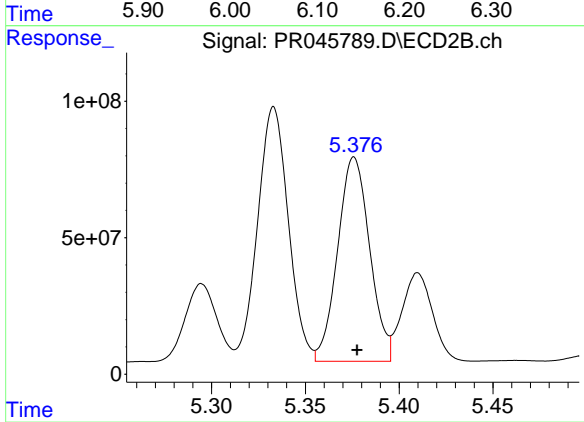
#13 AR-1232-3

R.T.: 5.295 min
 Delta R.T.: 0.000 min
 Response: 332674843
 Conc: 2952.47 ng/ml



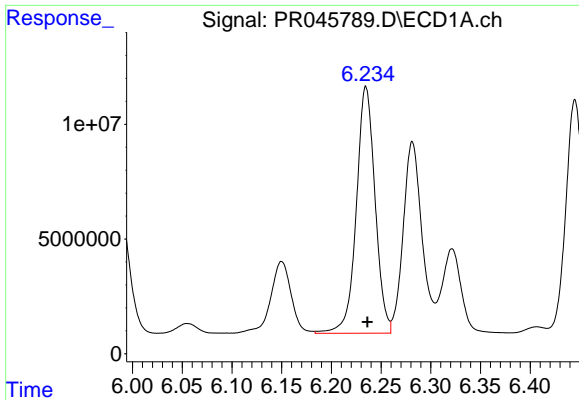
#14 AR-1232-4

R.T.: 6.150 min
 Delta R.T.: -0.002 min
 Response: 45356609
 Conc: 2892.24 ng/ml



#14 AR-1232-4

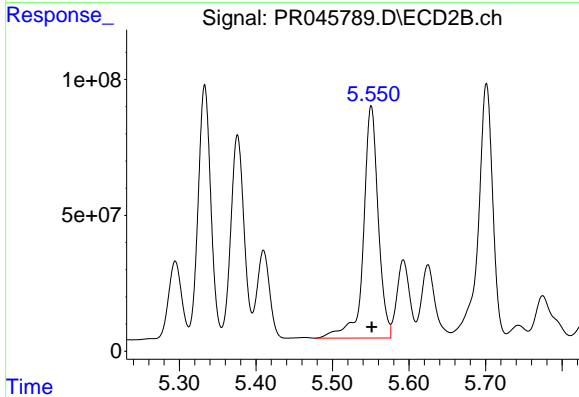
R.T.: 5.376 min
 Delta R.T.: -0.002 min
 Response: 889156631
 Conc: 8567.70 ng/ml



#15 AR-1232-5

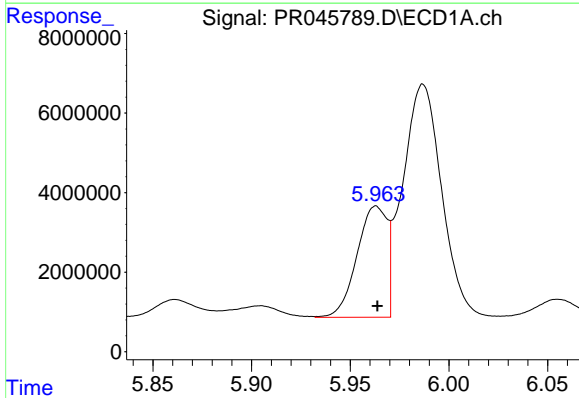
R.T.: 6.235 min
 Delta R.T.: -0.002 min
 Response: 141241538
 Conc: 11395.03 ng/ml

Instrument :
 ECD_R
 ClientSampleId :



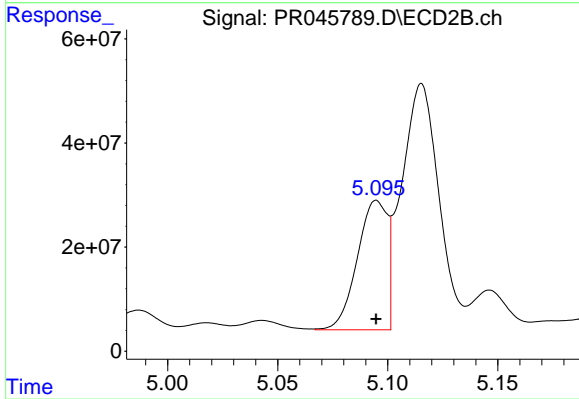
#15 AR-1232-5

R.T.: 5.551 min
 Delta R.T.: 0.000 min
 Response: 1147585360
 Conc: 10140.79 ng/ml



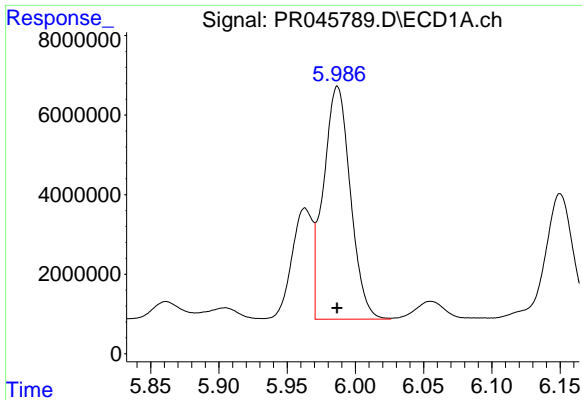
#16 AR-1242-1

R.T.: 5.963 min
 Delta R.T.: 0.000 min
 Response: 29677570
 Conc: 556.02 ng/ml



#16 AR-1242-1

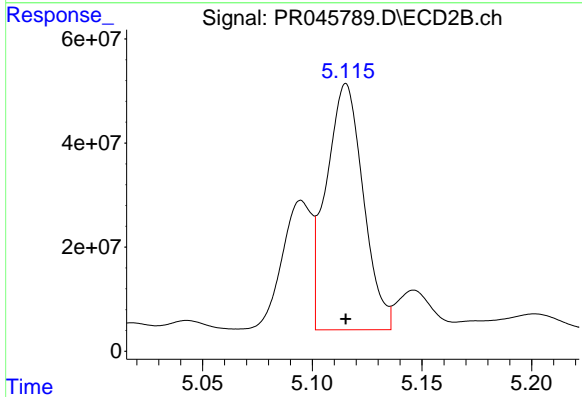
R.T.: 5.095 min
 Delta R.T.: 0.000 min
 Response: 235095145
 Conc: 559.70 ng/ml



#17 AR-1242-2

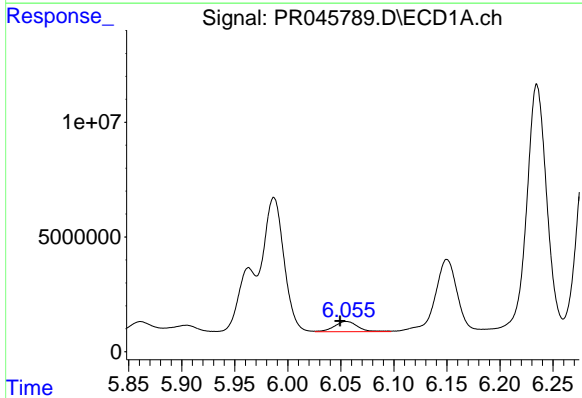
R.T.: 5.987 min
 Delta R.T.: 0.000 min
 Response: 80522948
 Conc: 1050.82 ng/ml

Instrument :
 ECD_R
 ClientSampled :



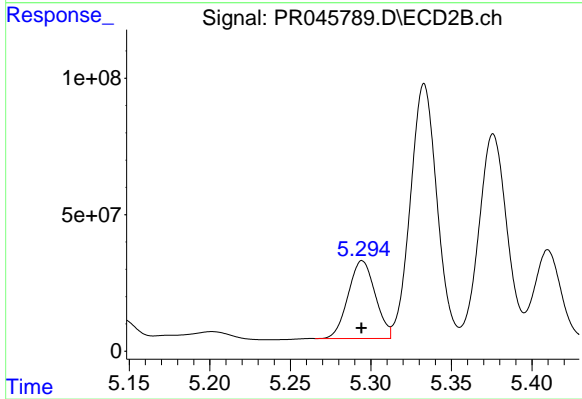
#17 AR-1242-2

R.T.: 5.115 min
 Delta R.T.: 0.000 min
 Response: 556434812
 Conc: 1024.35 ng/ml



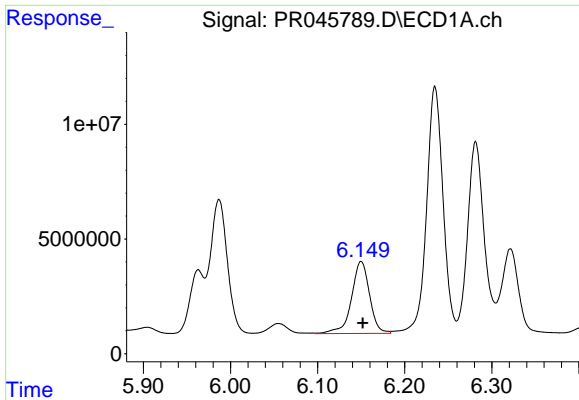
#18 AR-1242-3

R.T.: 6.055 min
 Delta R.T.: 0.006 min
 Response: 6789245
 Conc: 145.57 ng/ml



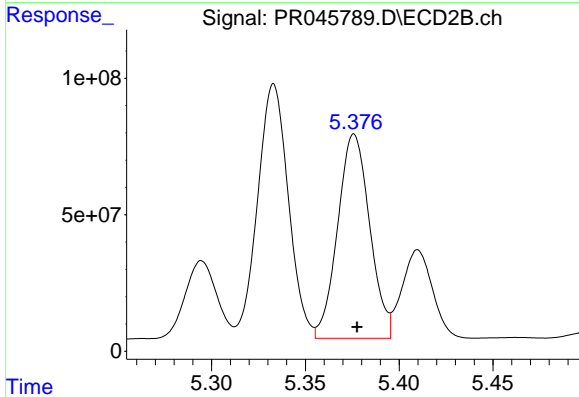
#18 AR-1242-3

R.T.: 5.295 min
 Delta R.T.: 0.000 min
 Response: 332674843
 Conc: 1137.47 ng/ml

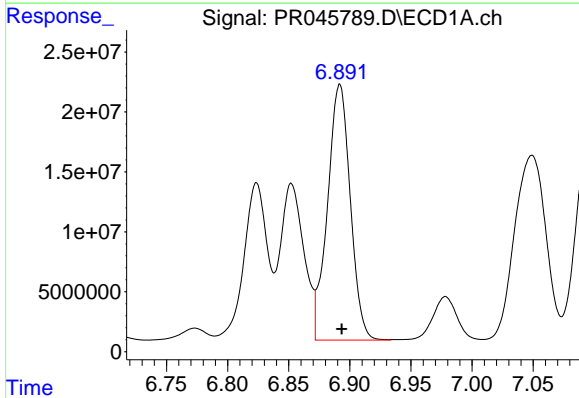


#19 AR-1242-4
 R.T.: 6.150 min
 Delta R.T.: -0.002 min
 Response: 45356609
 Conc: 1181.97 ng/ml

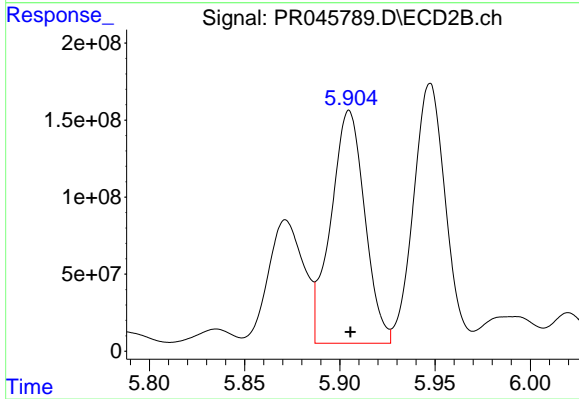
Instrument :
 ECD_R
 ClientSampleId :



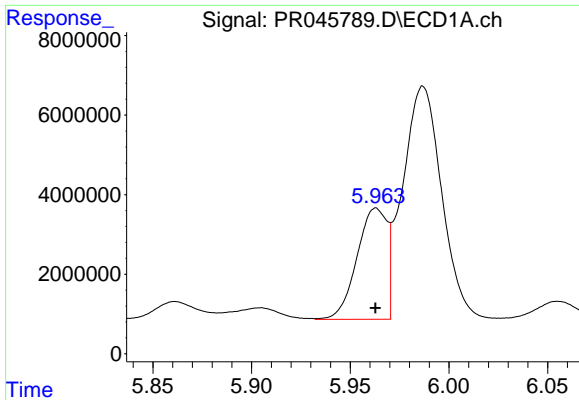
#19 AR-1242-4
 R.T.: 5.376 min
 Delta R.T.: -0.002 min
 Response: 889156631
 Conc: 3111.22 ng/ml



#20 AR-1242-5
 R.T.: 6.892 min
 Delta R.T.: -0.002 min
 Response: 276909130
 Conc: 6368.12 ng/ml



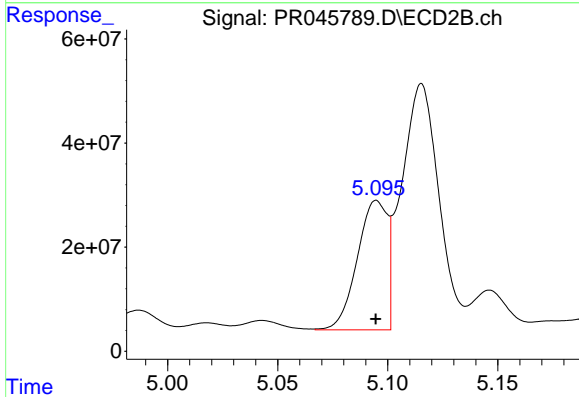
#20 AR-1242-5
 R.T.: 5.905 min
 Delta R.T.: 0.000 min
 Response: 1872447181
 Conc: 4852.50 ng/ml



#21 AR-1248-1

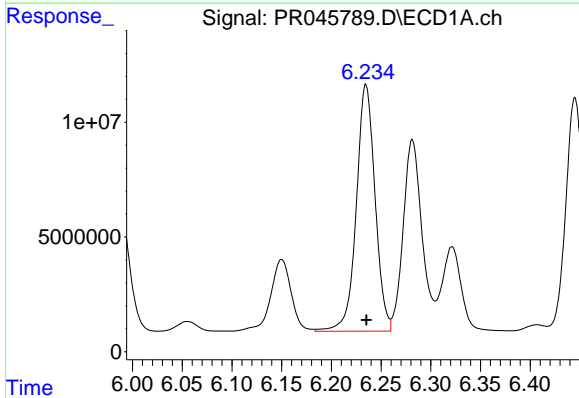
R.T.: 5.963 min
 Delta R.T.: 0.000 min
 Response: 29677570
 Conc: 739.00 ng/ml

Instrument :
 ECD_R
 ClientSampleId :



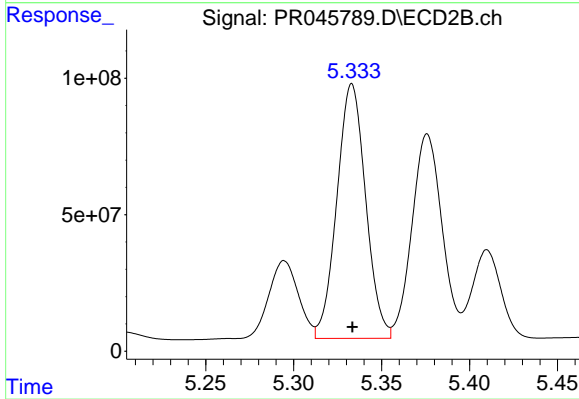
#21 AR-1248-1

R.T.: 5.095 min
 Delta R.T.: 0.000 min
 Response: 235095145
 Conc: 731.99 ng/ml



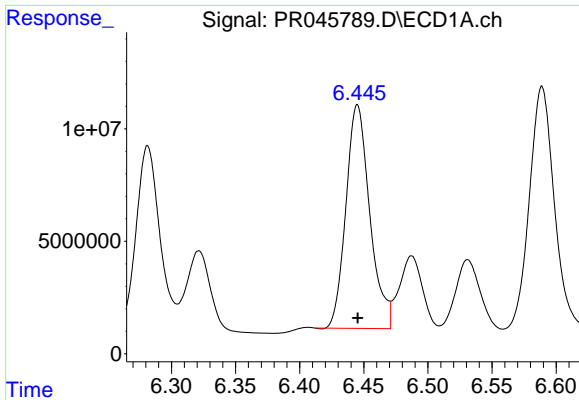
#22 AR-1248-2

R.T.: 6.235 min
 Delta R.T.: 0.000 min
 Response: 141241538
 Conc: 2562.95 ng/ml



#22 AR-1248-2

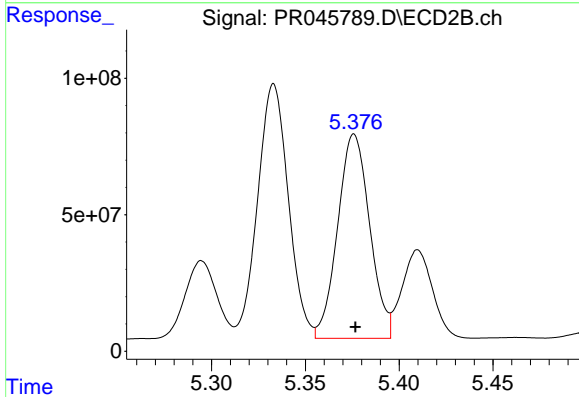
R.T.: 5.333 min
 Delta R.T.: 0.000 min
 Response: 1063150326
 Conc: 2679.85 ng/ml



#23 AR-1248-3

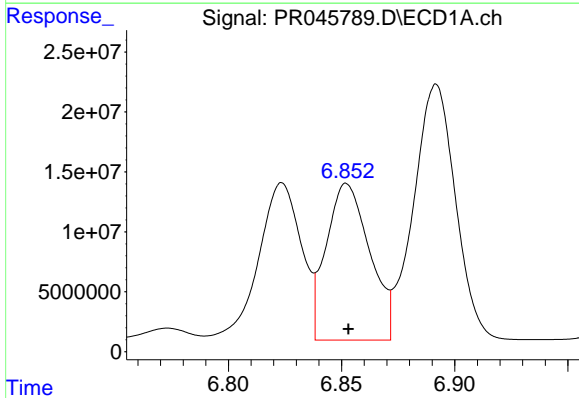
R.T.: 6.445 min
 Delta R.T.: 0.000 min
 Response: 128817176
 Conc: 2098.97 ng/ml

Instrument :
 ECD_R
 ClientSampleId :



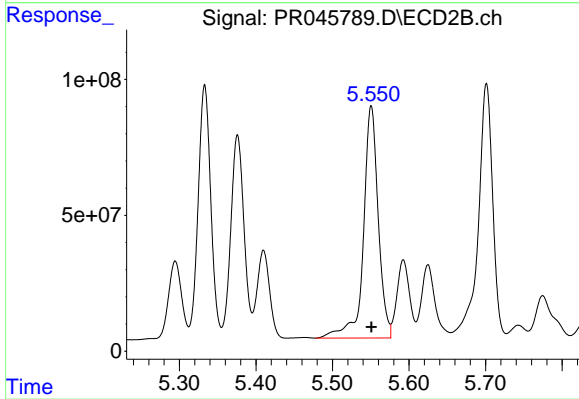
#23 AR-1248-3

R.T.: 5.376 min
 Delta R.T.: 0.000 min
 Response: 889156631
 Conc: 2167.41 ng/ml



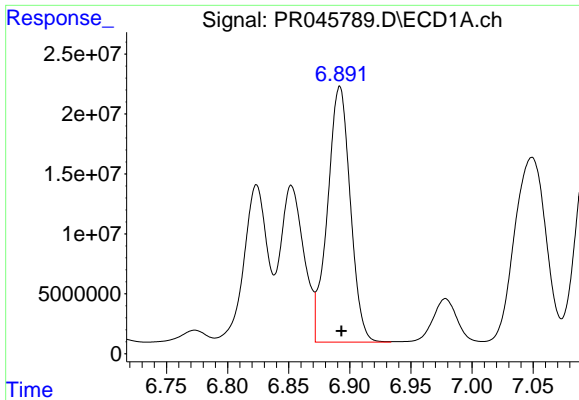
#24 AR-1248-4

R.T.: 6.852 min
 Delta R.T.: 0.000 min
 Response: 174817263
 Conc: 2382.30 ng/ml



#24 AR-1248-4

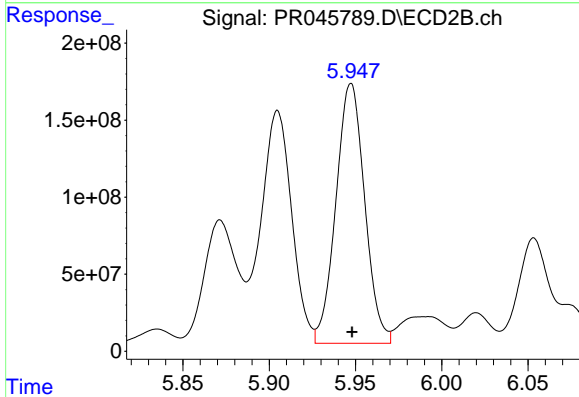
R.T.: 5.551 min
 Delta R.T.: 0.000 min
 Response: 1147585360
 Conc: 2271.27 ng/ml



#25 AR-1248-5

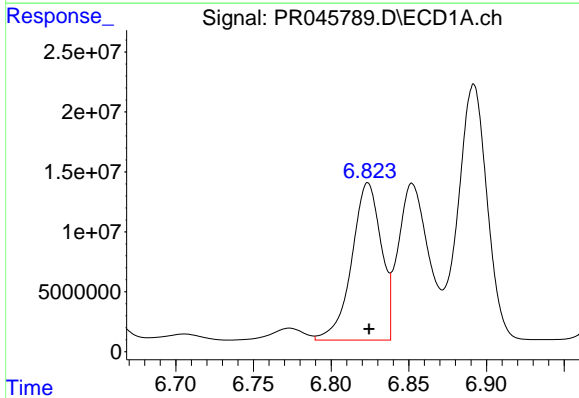
R.T.: 6.892 min
 Delta R.T.: -0.001 min
 Response: 276909130
 Conc: 3983.00 ng/ml

Instrument :
 ECD_R
 ClientSampleId :



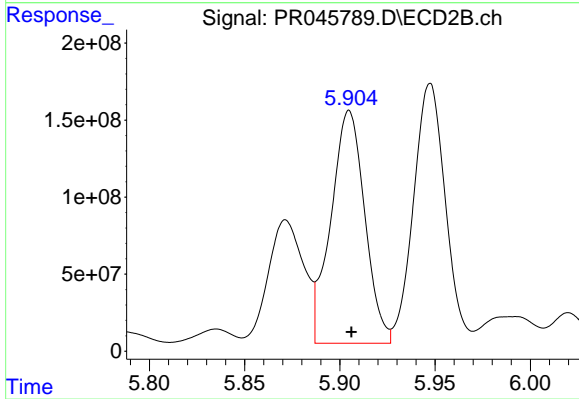
#25 AR-1248-5

R.T.: 5.947 min
 Delta R.T.: 0.000 min
 Response: 1958151003
 Conc: 3789.81 ng/ml



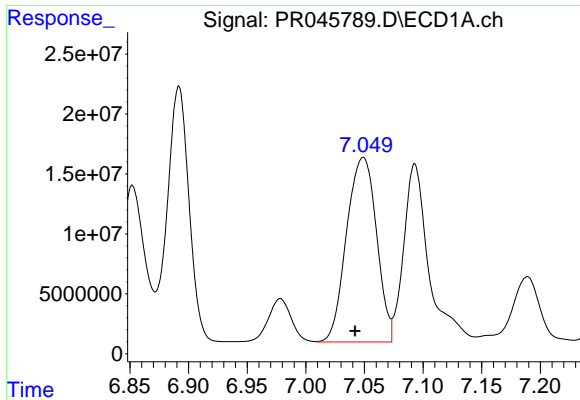
#26 AR-1254-1

R.T.: 6.824 min
 Delta R.T.: 0.000 min
 Response: 172972984
 Conc: 2423.10 ng/ml



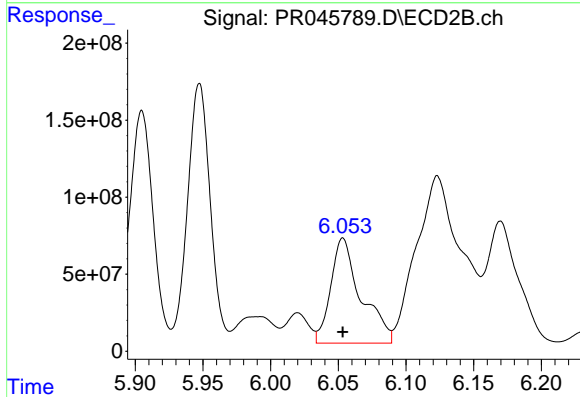
#26 AR-1254-1

R.T.: 5.905 min
 Delta R.T.: -0.001 min
 Response: 1872447181
 Conc: 2376.50 ng/ml

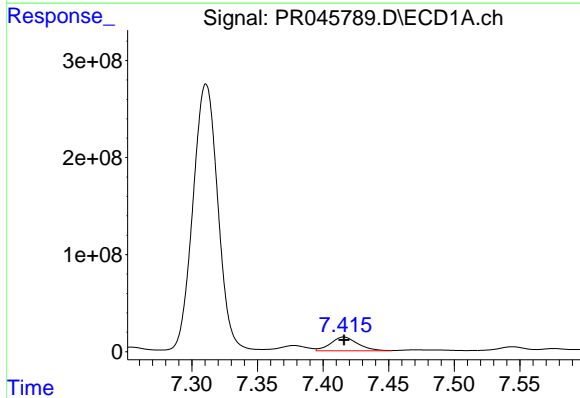


#27 AR-1254-2
 R.T.: 7.049 min
 Delta R.T.: 0.007 min
 Response: 273787282
 Conc: 2438.40 ng/ml

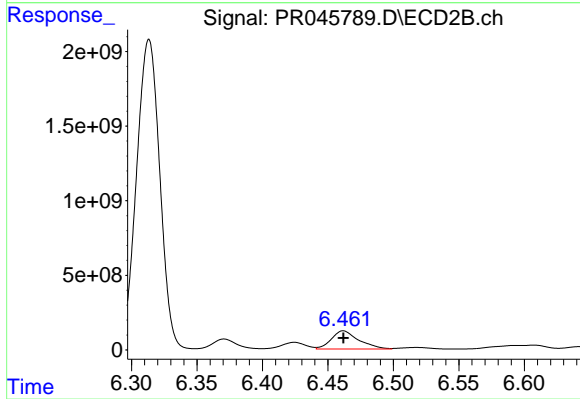
Instrument :
 ECD_R
 ClientSampleId :



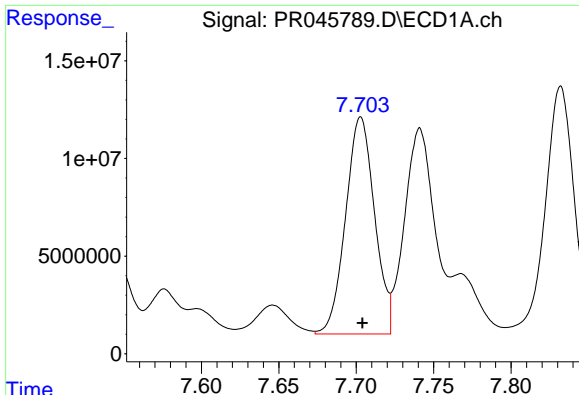
#27 AR-1254-2
 R.T.: 6.053 min
 Delta R.T.: 0.000 min
 Response: 1061632007
 Conc: 1547.79 ng/ml



#28 AR-1254-3
 R.T.: 7.416 min
 Delta R.T.: 0.000 min
 Response: 203429425
 Conc: 1667.28 ng/ml



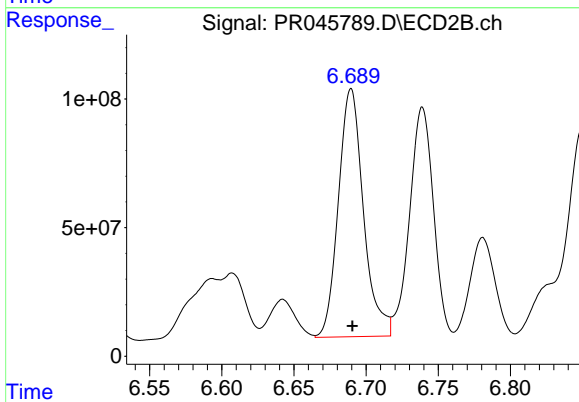
#28 AR-1254-3
 R.T.: 6.462 min
 Delta R.T.: 0.000 min
 Response: 1778552527
 Conc: 1551.36 ng/ml



#29 AR-1254-4

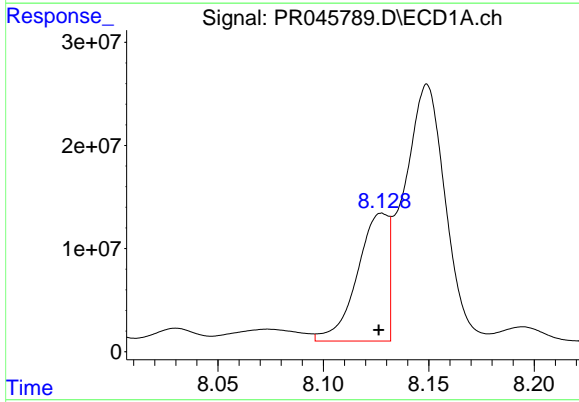
R.T.: 7.703 min
 Delta R.T.: -0.001 min
 Response: 144663987
 Conc: 1527.08 ng/ml

Instrument :
 ECD_R
 ClientSampleId :



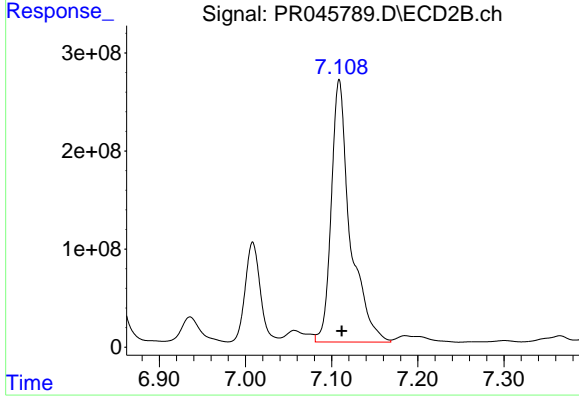
#29 AR-1254-4

R.T.: 6.690 min
 Delta R.T.: 0.000 min
 Response: 1167448948
 Conc: 1553.13 ng/ml



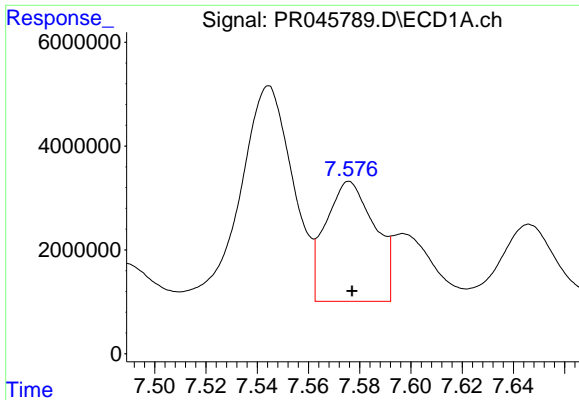
#30 AR-1254-5

R.T.: 8.128 min
 Delta R.T.: 0.002 min
 Response: 127027315
 Conc: 1242.29 ng/ml



#30 AR-1254-5

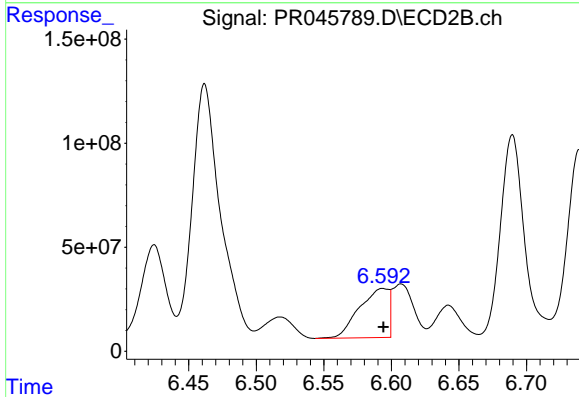
R.T.: 7.109 min
 Delta R.T.: -0.003 min
 Response: 4086070828
 Conc: 4093.35 ng/ml



#31 AR-1260-1

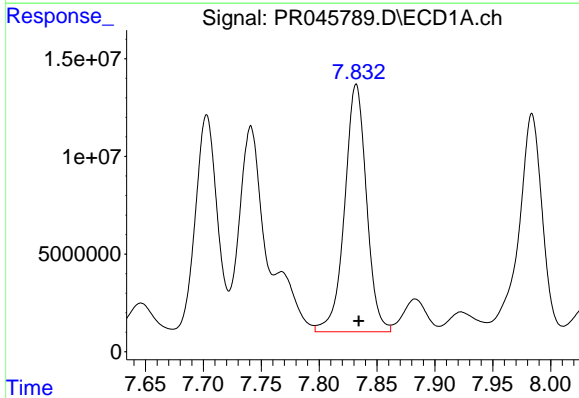
R.T.: 7.576 min
 Delta R.T.: -0.001 min
 Response: 30632043
 Conc: 429.47 ng/ml

Instrument :
 ECD_R
 ClientSampled :



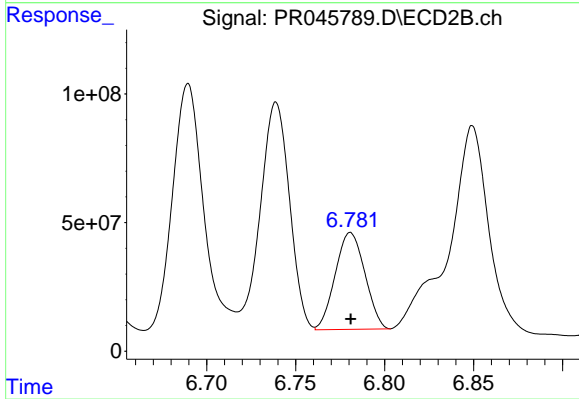
#31 AR-1260-1

R.T.: 6.594 min
 Delta R.T.: 0.000 min
 Response: 356825852
 Conc: 648.48 ng/ml



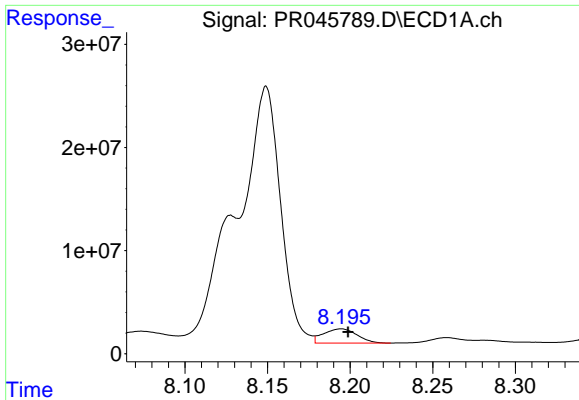
#32 AR-1260-2

R.T.: 7.832 min
 Delta R.T.: -0.002 min
 Response: 166728360
 Conc: 1873.66 ng/ml



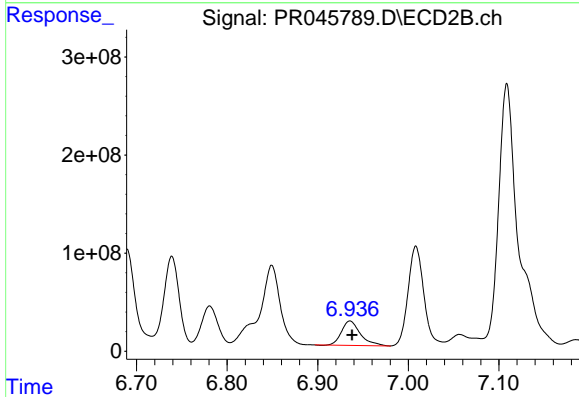
#32 AR-1260-2

R.T.: 6.781 min
 Delta R.T.: 0.000 min
 Response: 436600331
 Conc: 632.86 ng/ml

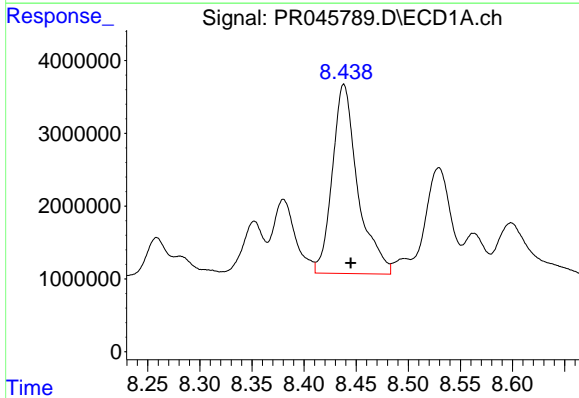


#33 AR-1260-3
 R.T.: 8.195 min
 Delta R.T.: -0.004 min
 Response: 19472947
 Conc: 283.96 ng/ml

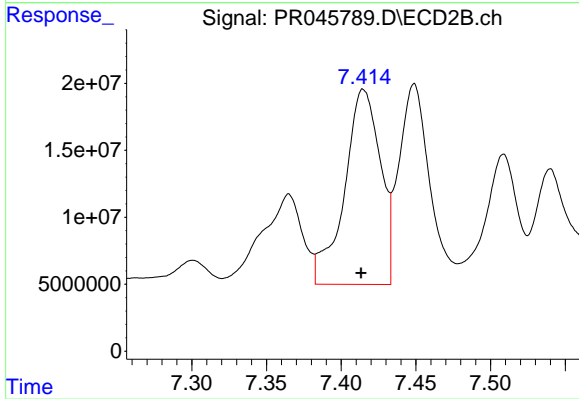
Instrument :
 ECD_R
 ClientSampleId :



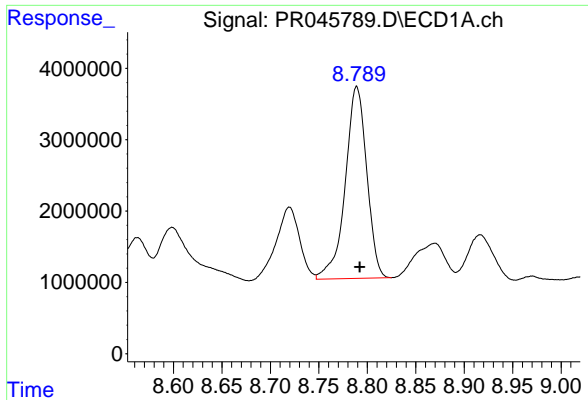
#33 AR-1260-3
 R.T.: 6.936 min
 Delta R.T.: -0.002 min
 Response: 361014052
 Conc: 572.56 ng/ml



#34 AR-1260-4
 R.T.: 8.438 min
 Delta R.T.: -0.007 min
 Response: 44221592
 Conc: 545.02 ng/ml



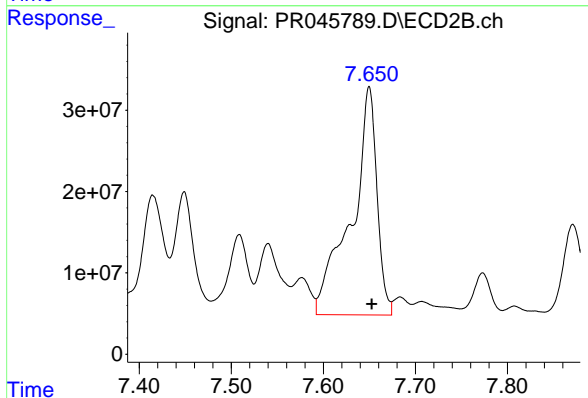
#34 AR-1260-4
 R.T.: 7.415 min
 Delta R.T.: 0.001 min
 Response: 244085417
 Conc: 443.42 ng/ml



#35 AR-1260-5

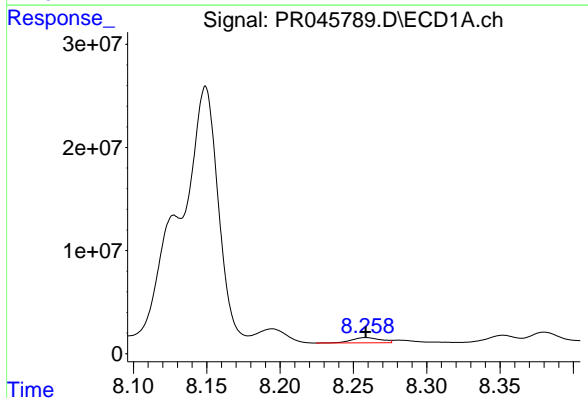
R.T.: 8.789 min
 Delta R.T.: -0.003 min
 Response: 41527188
 Conc: 237.34 ng/ml

Instrument :
 ECD_R
 ClientSampleId :



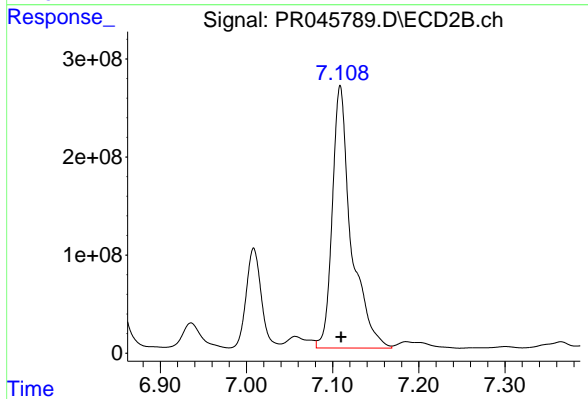
#35 AR-1260-5

R.T.: 7.650 min
 Delta R.T.: -0.003 min
 Response: 542192575
 Conc: 372.80 ng/ml



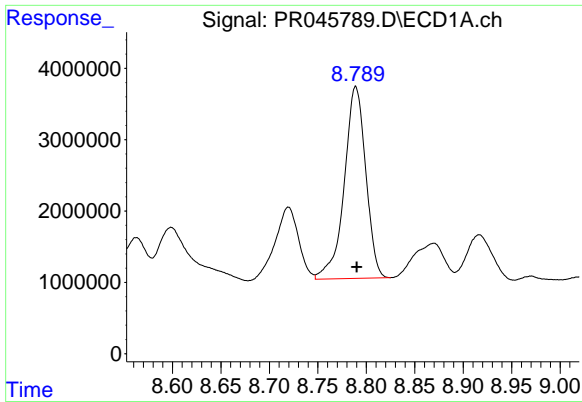
#36 AR-1262-1

R.T.: 8.259 min
 Delta R.T.: 0.000 min
 Response: 6857512
 Conc: 127.82 ng/ml



#36 AR-1262-1

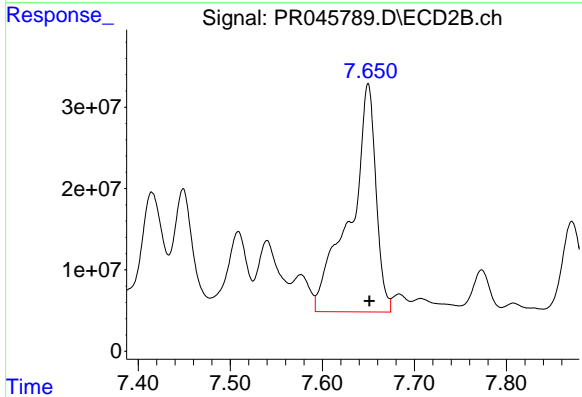
R.T.: 7.109 min
 Delta R.T.: 0.000 min
 Response: 4086070828
 Conc: 6962.90 ng/ml



#37 AR-1262-2

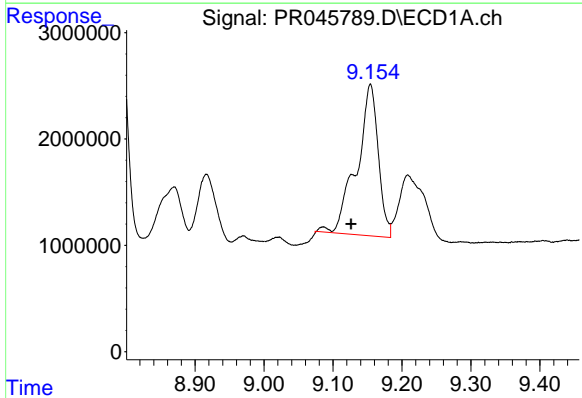
R.T.: 8.789 min
 Delta R.T.: -0.001 min
 Response: 41527188
 Conc: 164.15 ng/ml

Instrument :
 ECD_R
 ClientSampleId :



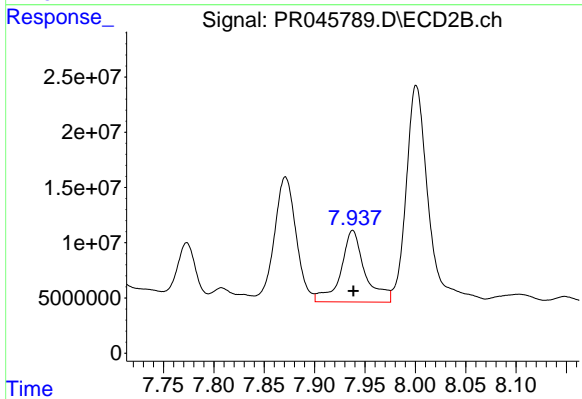
#37 AR-1262-2

R.T.: 7.650 min
 Delta R.T.: -0.001 min
 Response: 542192575
 Conc: 244.24 ng/ml



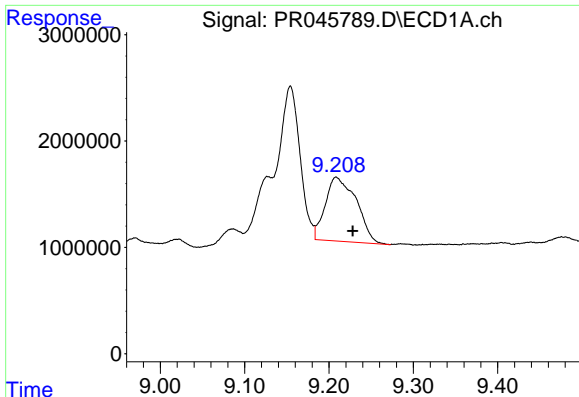
#38 AR-1262-3

R.T.: 9.154 min
 Delta R.T.: 0.028 min
 Response: 30643458
 Conc: 276.83 ng/ml



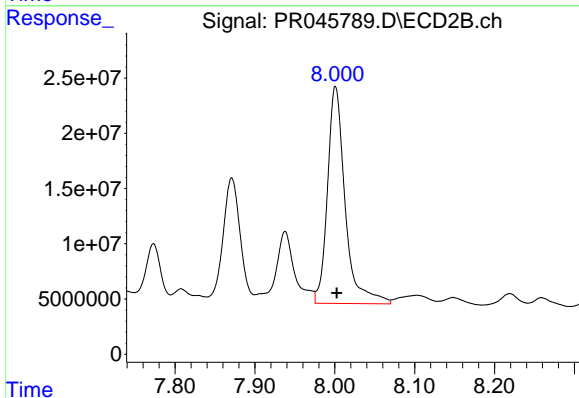
#38 AR-1262-3

R.T.: 7.938 min
 Delta R.T.: 0.000 min
 Response: 108271589
 Conc: 115.64 ng/ml

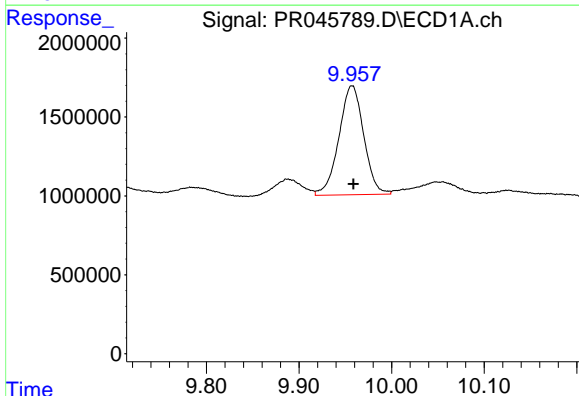


#39 AR-1262-4
 R.T.: 9.209 min
 Delta R.T.: -0.019 min
 Response: 15358247
 Conc: 118.65 ng/ml

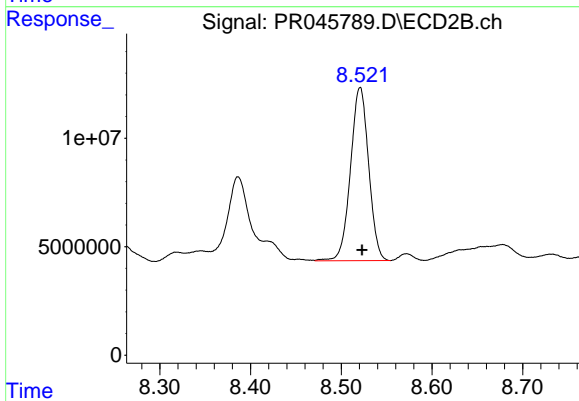
Instrument :
 ECD_R
 ClientSampled :



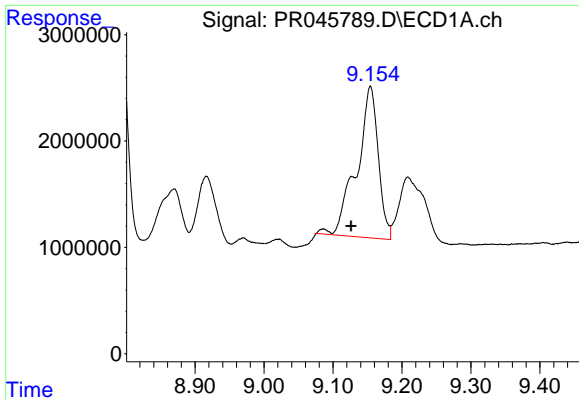
#39 AR-1262-4
 R.T.: 8.001 min
 Delta R.T.: -0.002 min
 Response: 302496806
 Conc: 180.98 ng/ml



#40 AR-1262-5
 R.T.: 9.957 min
 Delta R.T.: -0.001 min
 Response: 12895487
 Conc: 131.45 ng/ml



#40 AR-1262-5
 R.T.: 8.521 min
 Delta R.T.: -0.002 min
 Response: 111222088
 Conc: 130.50 ng/ml

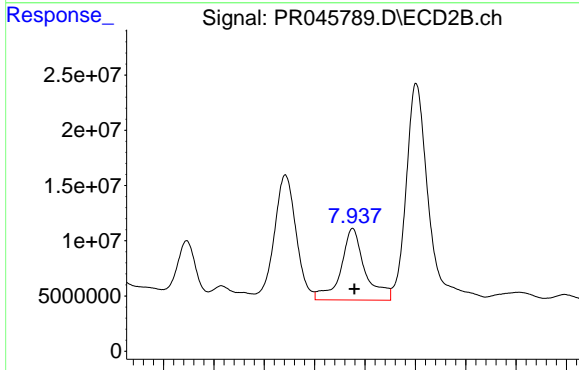


#41 AR-1268-1

R.T.: 9.154 min
 Delta R.T.: 0.028 min
 Response: 30643458
 Conc: 110.62 ng/ml

Instrument :
 ECD_R
 ClientSampleId :

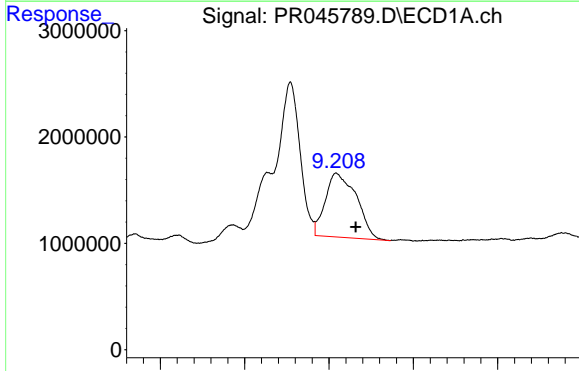
Time



#41 AR-1268-1

R.T.: 7.938 min
 Delta R.T.: -0.002 min
 Response: 108271589
 Conc: 45.80 ng/ml

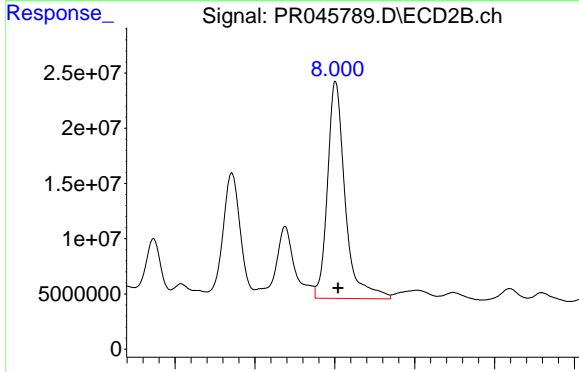
Time



#42 AR-1268-2

R.T.: 9.209 min
 Delta R.T.: -0.023 min
 Response: 15358247
 Conc: 59.26 ng/ml

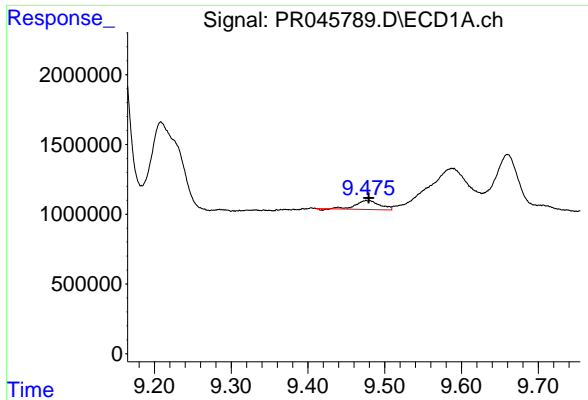
Time



#42 AR-1268-2

R.T.: 8.001 min
 Delta R.T.: -0.003 min
 Response: 302496806
 Conc: 133.17 ng/ml

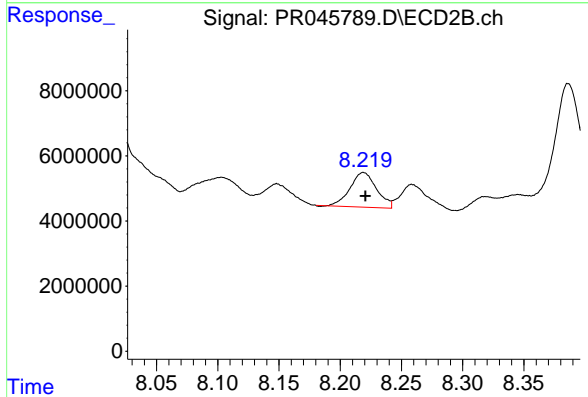
Time



#43 AR-1268-3

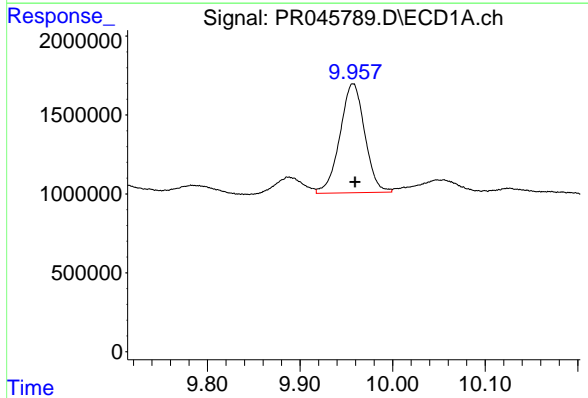
R.T.: 9.477 min
 Delta R.T.: -0.001 min
 Response: 1362407
 Conc: 6.29 ng/ml

Instrument :
 ECD_R
 ClientSampleId :



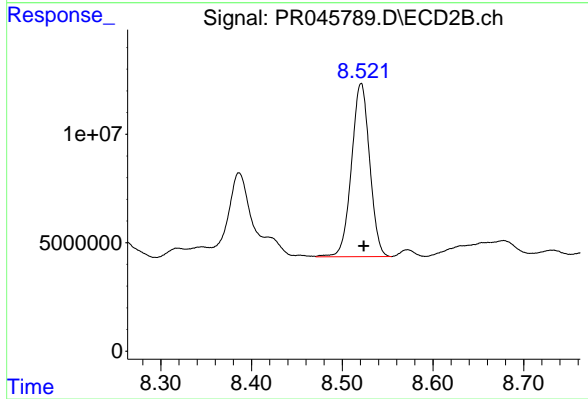
#43 AR-1268-3

R.T.: 8.219 min
 Delta R.T.: -0.002 min
 Response: 15983209
 Conc: 8.43 ng/ml



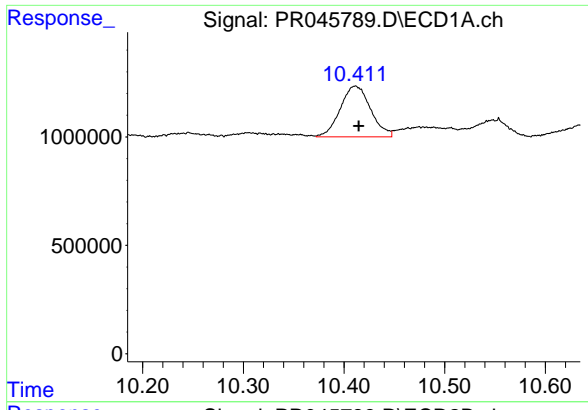
#44 AR-1268-4

R.T.: 9.957 min
 Delta R.T.: -0.002 min
 Response: 12895487
 Conc: 129.19 ng/ml



#44 AR-1268-4

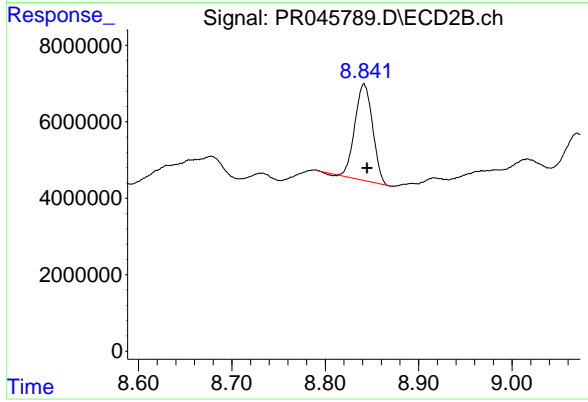
R.T.: 8.521 min
 Delta R.T.: -0.003 min
 Response: 111222088
 Conc: 131.86 ng/ml



#45 AR-1268-5

R.T.: 10.411 min
Delta R.T.: -0.003 min
Response: 4894785
Conc: 6.46 ng/ml

Instrument :
ECD_R
ClientSampleId :



#45 AR-1268-5

R.T.: 8.842 min
Delta R.T.: -0.003 min
Response: 33196930
Conc: 5.44 ng/ml