

Data Path : Z:\pestpcbsrv\HPCHEM1\ECD_R\Data\PR061219\
 Data File : PR038671.D
 Signal(s) : Signal #1: ECD1A.ch Signal #2: ECD2B.ch
 Acq On : 12 Jun 2019 11:27
 Operator : SM\MA
 Sample : PB120421BS
 Misc :
 ALS Vial : 9 Sample Multiplier: 1

Instrument :
 ECD_R
ClientSampleId :
 PB120421BS

Manual Integrations
APPROVED
 Ankita
 6/13/2019 1:50:11 PM

Integration File signal 1: autoint1.e
 Integration File signal 2: autoint2.e
 Quant Time: Jun 13 05:31:02 2019
 Quant Method : Z:\pestpcbsrv\HPCHEM1\ECD_R\Method\PR061119.M
 Quant Title : GC EXTRACTABLES
 QLast Update : Wed Jun 12 02:00:42 2019
 Response via : Initial Calibration
 Integrator: ChemStation

Volume Inj. : 2 µl
 Signal #1 Phase : ZB-MR1 Signal #2 Phase: ZB-MR2
 Signal #1 Info : 30Mx0.32mmx 0.50µ Signal #2 Info : 30M x 0.32mm x 0.25µm

Compound	RT#1	RT#2	Resp#1	Resp#2	ng/ml	ng/ml

System Monitoring Compounds						
1) SA Tetrachlo...	3.773	4.621	42370286	139.8E6	29.039m	28.041
2) SA Decachlor...	8.729	10.370	53104579	140.0E6	23.273	22.579
Target Compounds						
3) L1 AR-1016-1	4.845	5.776	17372935	54119216	281.564	264.803
4) L1 AR-1016-2	4.862	5.798	27901164	77522372	275.532	264.915
5) L1 AR-1016-3	5.036	5.860	13761951	46509862	271.398	256.625
6) L1 AR-1016-4	5.077	5.959	11150861	38354588	274.042	260.219
7) L1 AR-1016-5	5.287	6.248	14458707	37557704	269.054	254.503
31) L7 AR-1260-1	6.304	7.360	27184266	65405386	242.203	238.718
32) L7 AR-1260-2	6.488	7.612	34861064	79737422	240.070	242.229
33) L7 AR-1260-3	6.641	7.968	31174707	60349435	239.645	238.332
34) L7 AR-1260-4	7.107	8.197	26450736	70524174	240.702	235.830
35) L7 AR-1260-5	7.344	8.524	67330057	145.6E6	235.623	234.171

(f)=RT Delta > 1/2 Window (#)=Amounts differ by > 25% (m)=manual int.

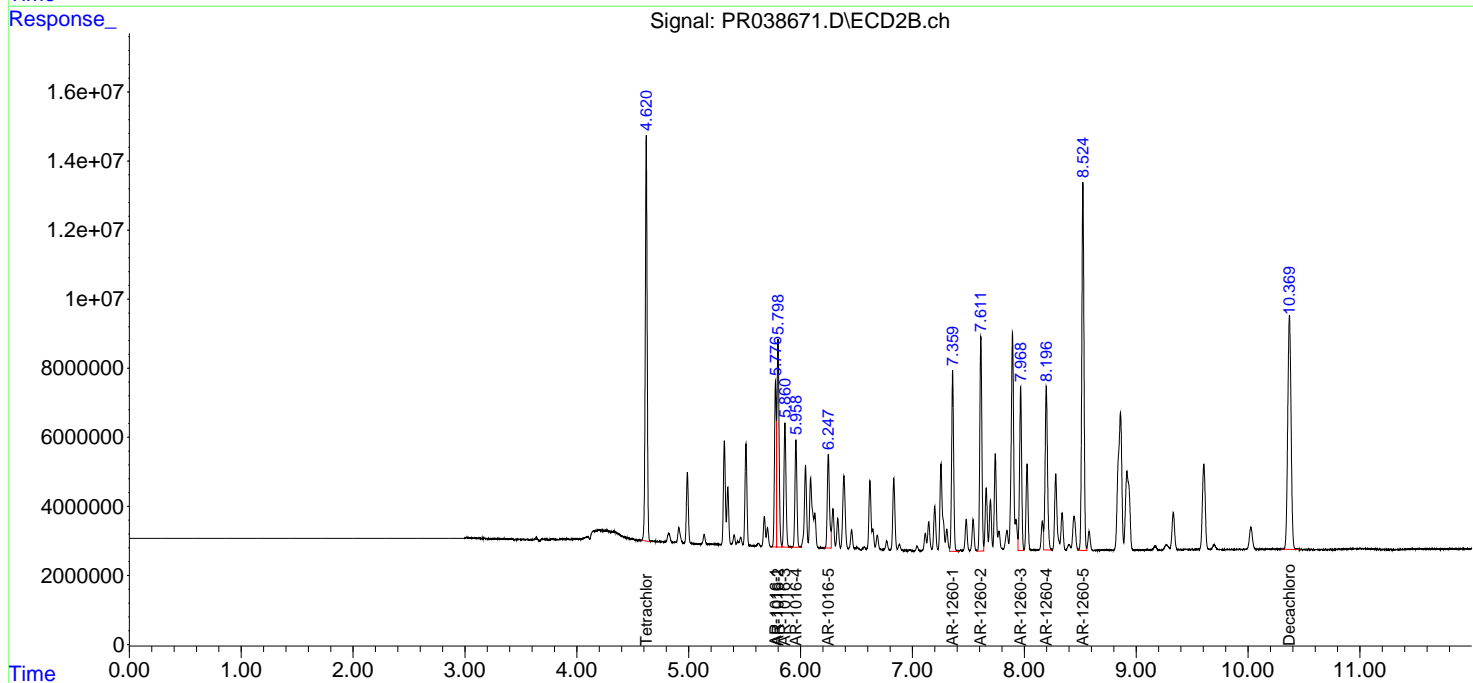
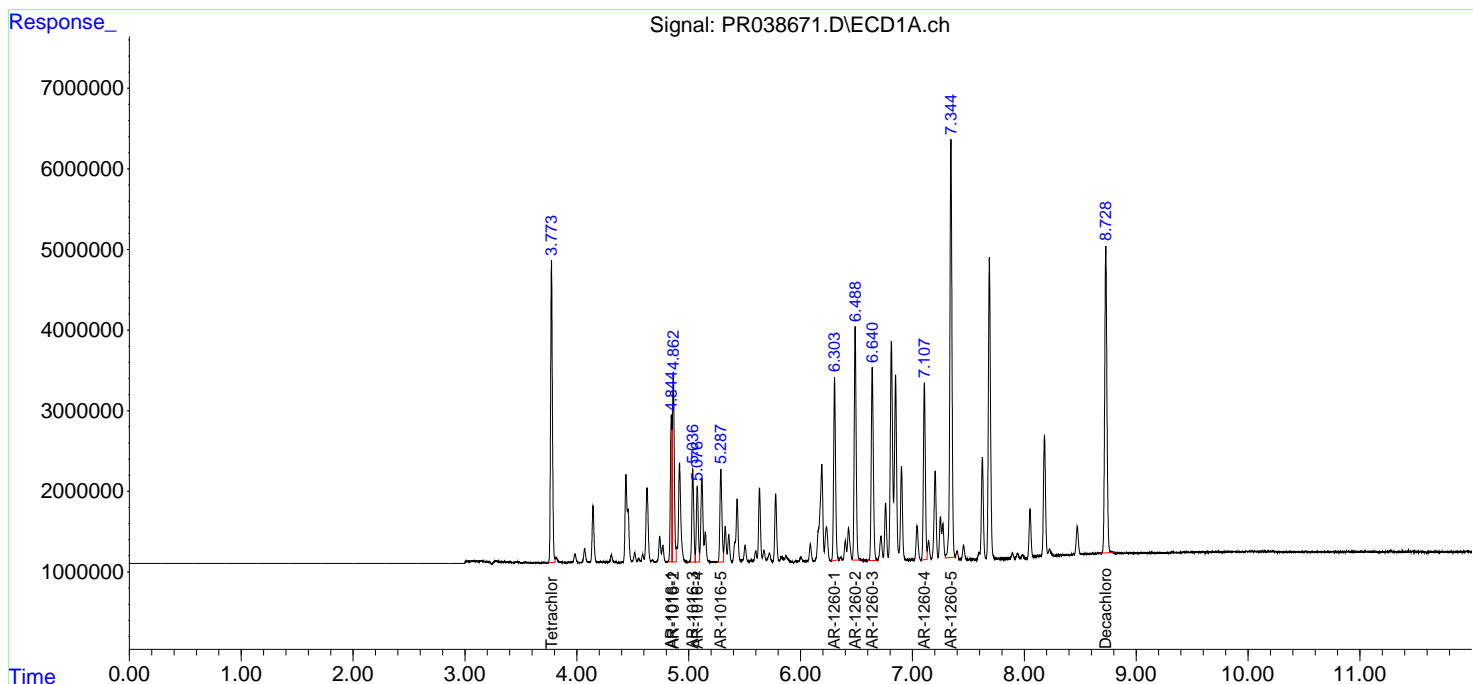
Data Path : Z:\pestpcbsrv\HPCHEM1\ECD_R\Data\PR061219\
 Data File : PR038671.D
 Signal(s) : Signal #1: ECD1A.ch Signal #2: ECD2B.ch
 Acq On : 12 Jun 2019 11:27
 Operator : SM\MA
 Sample : PB120421BS
 Misc :
 ALS Vial : 9 Sample Multiplier: 1

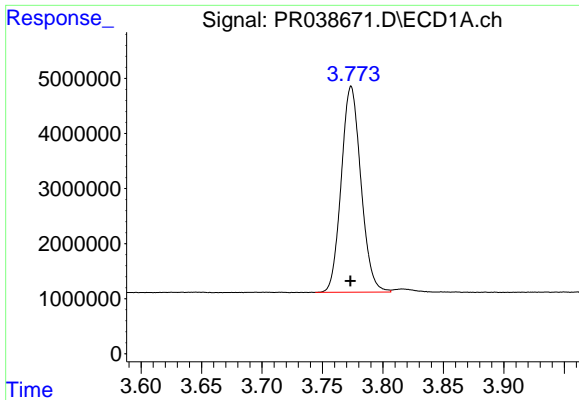
Instrument :
 ECD_R
Client Sampled :
 PB120421BS

Manual Integrations
APPROVED
 Ankita
 6/13/2019 1:50:11 PM

Integration File signal 1: autoint1.e
 Integration File signal 2: autoint2.e
 Quant Time: Jun 13 05:31:02 2019
 Quant Method : Z:\pestpcbsrv\HPCHEM1\ECD_R\Method\PR061119.M
 Quant Title : GC EXTRACTABLES
 QLast Update : Wed Jun 12 02:00:42 2019
 Response via : Initial Calibration
 Integrator: ChemStation

Volume Inj. : 2 µl
 Signal #1 Phase : ZB-MR1 Signal #2 Phase: ZB-MR2
 Signal #1 Info : 30Mx0.32mmx 0.50µ Signal #2 Info : 30M x 0.32mm x 0.25µm





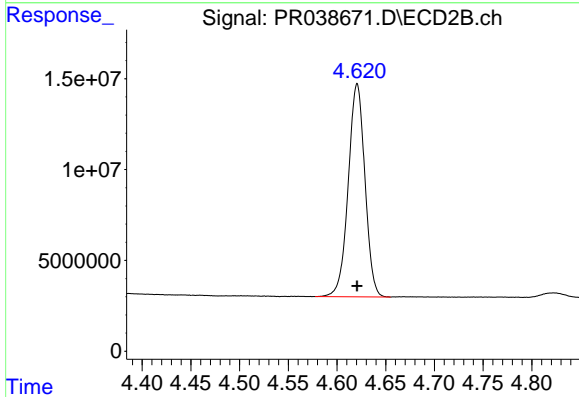
#1 Tetrachloro-m-xylene

R.T.: 3.773 min
 Delta R.T.: 0.000 min
 Response: 42370286
 Conc: 29.04 ng/ml m

Instrument :
 ECD_R
 ClientSampled :
 PB120421BS

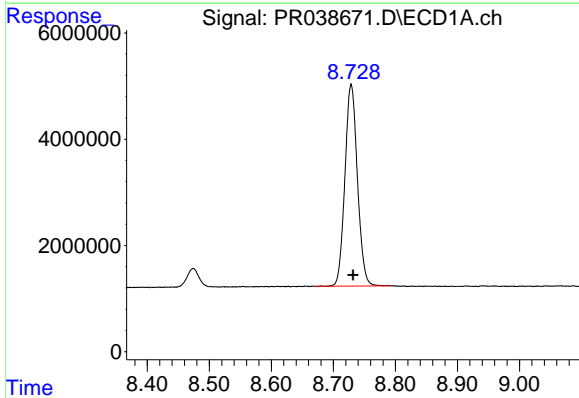
Manual Integrations
 APPROVED

Ankita
 6/13/2019 1:50:11 PM



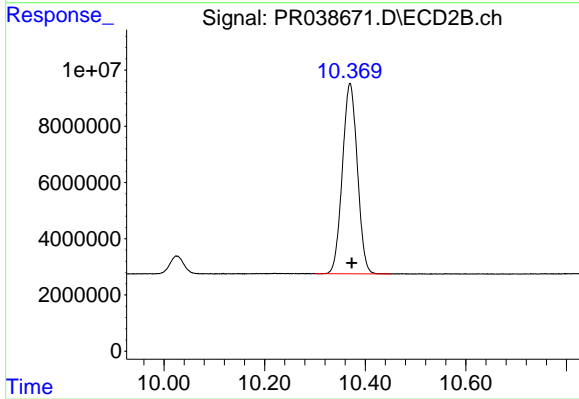
#1 Tetrachloro-m-xylene

R.T.: 4.621 min
 Delta R.T.: 0.000 min
 Response: 139798673
 Conc: 28.04 ng/ml



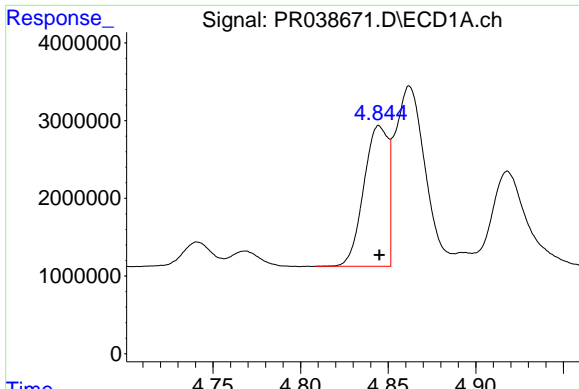
#2 Decachlorobiphenyl

R.T.: 8.729 min
 Delta R.T.: -0.003 min
 Response: 53104579
 Conc: 23.27 ng/ml



#2 Decachlorobiphenyl

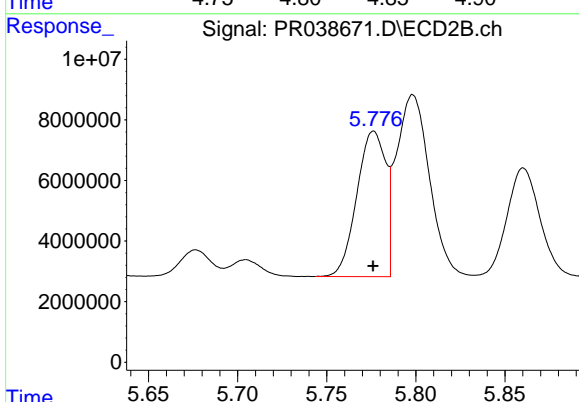
R.T.: 10.370 min
 Delta R.T.: -0.003 min
 Response: 139953504
 Conc: 22.58 ng/ml



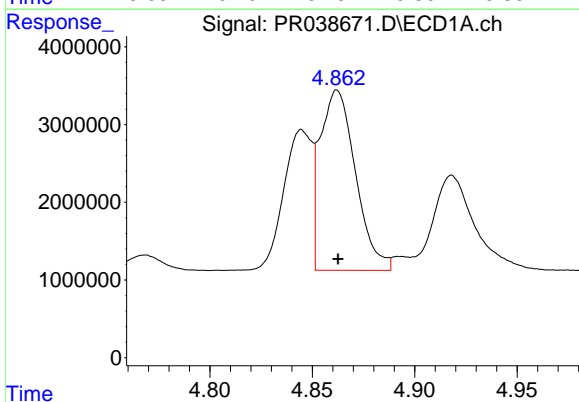
#3 AR-1016-1
 R.T.: 4.845 min
 Delta R.T.: 0.000 min
 Response: 17372935
 Conc: 281.56 ng/ml

Instrument :
 ECD_R
ClientSampled :
 PB120421BS

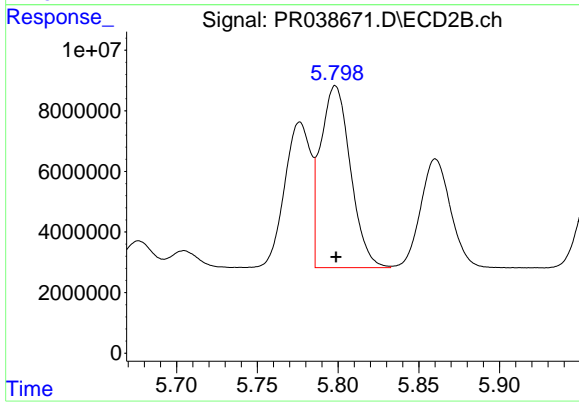
Manual Integrations
APPROVED
 Ankita
 6/13/2019 1:50:11 PM



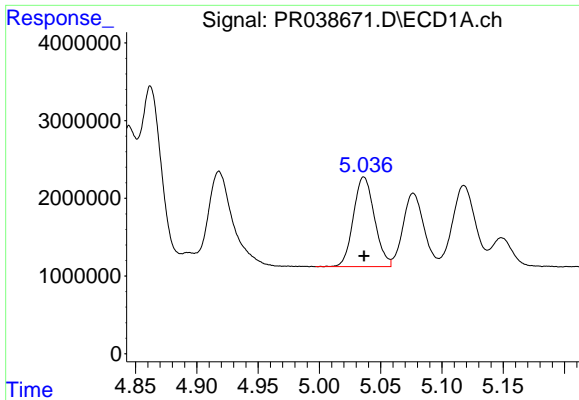
#3 AR-1016-1
 R.T.: 5.776 min
 Delta R.T.: 0.000 min
 Response: 54119216
 Conc: 264.80 ng/ml



#4 AR-1016-2
 R.T.: 4.862 min
 Delta R.T.: 0.000 min
 Response: 27901164
 Conc: 275.53 ng/ml



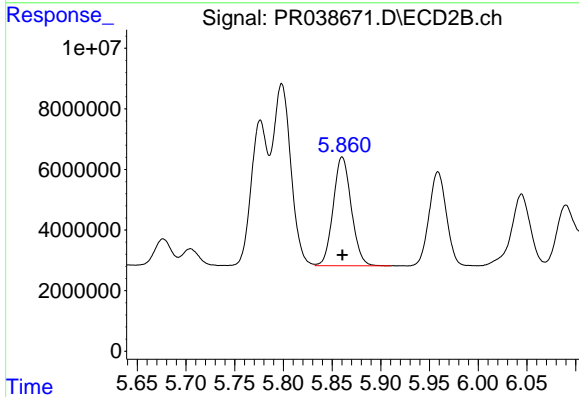
#4 AR-1016-2
 R.T.: 5.798 min
 Delta R.T.: 0.000 min
 Response: 77522372
 Conc: 264.91 ng/ml



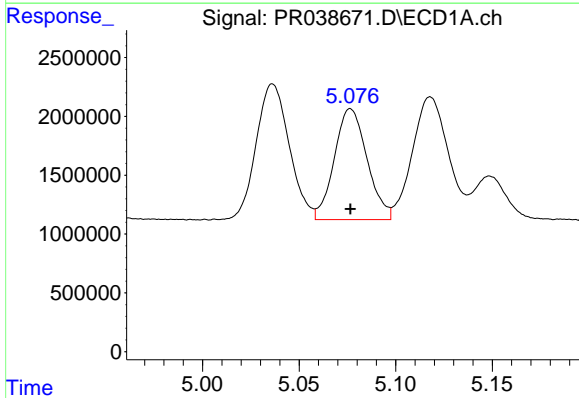
#5 AR-1016-3
 R.T.: 5.036 min
 Delta R.T.: 0.000 min
 Response: 13761951
 Conc: 271.40 ng/ml

Instrument :
 ECD_R
ClientSampled :
 PB120421BS

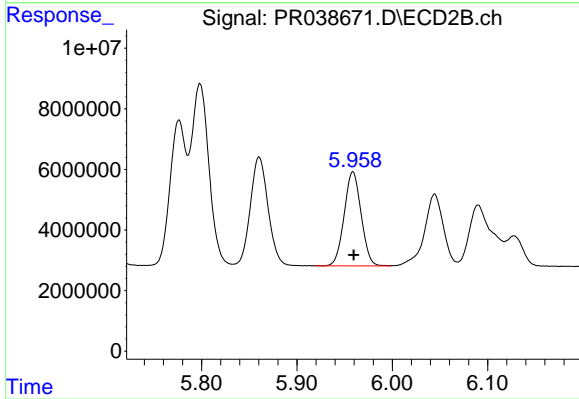
Manual Integrations
APPROVED
 Ankita
 6/13/2019 1:50:11 PM



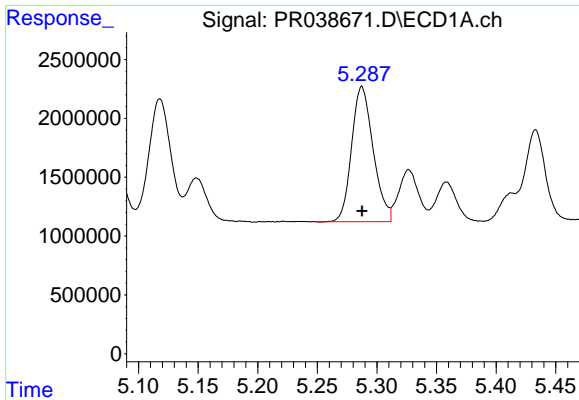
#5 AR-1016-3
 R.T.: 5.860 min
 Delta R.T.: 0.000 min
 Response: 46509862
 Conc: 256.62 ng/ml



#6 AR-1016-4
 R.T.: 5.077 min
 Delta R.T.: 0.000 min
 Response: 11150861
 Conc: 274.04 ng/ml



#6 AR-1016-4
 R.T.: 5.959 min
 Delta R.T.: 0.000 min
 Response: 38354588
 Conc: 260.22 ng/ml

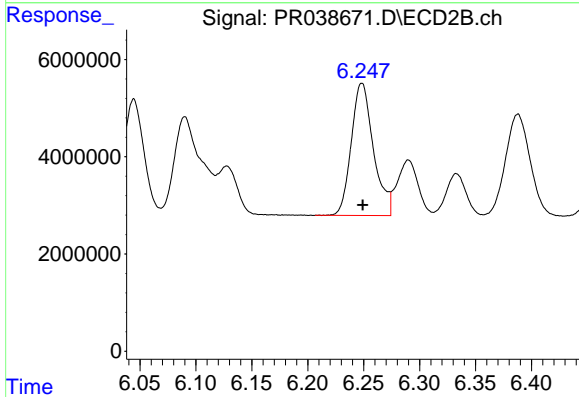


#7 AR-1016-5

R.T.: 5.287 min
 Delta R.T.: 0.000 min
 Response: 14458707
 Conc: 269.05 ng/ml

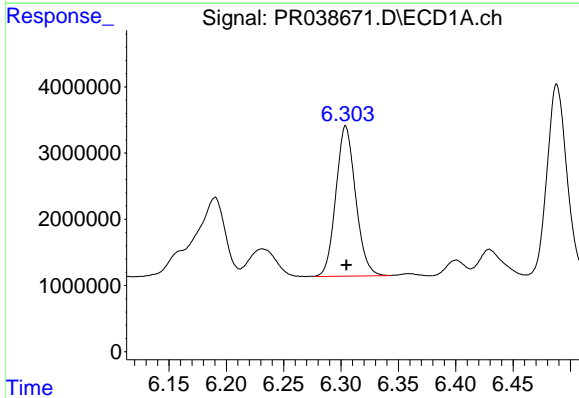
Instrument :
 ECD_R
 ClientSampleId :
 PB120421BS

Manual Integrations
 APPROVED
 Ankita
 6/13/2019 1:50:11 PM



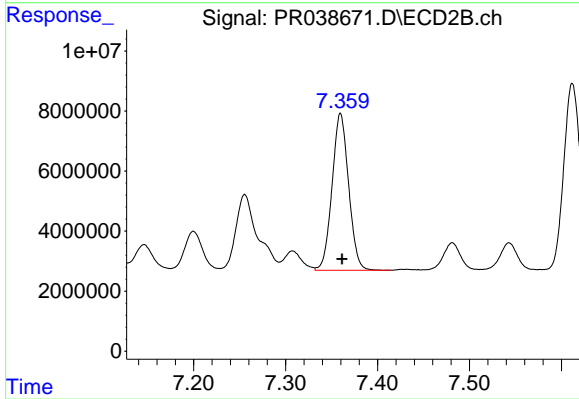
#7 AR-1016-5

R.T.: 6.248 min
 Delta R.T.: 0.000 min
 Response: 37557704
 Conc: 254.50 ng/ml



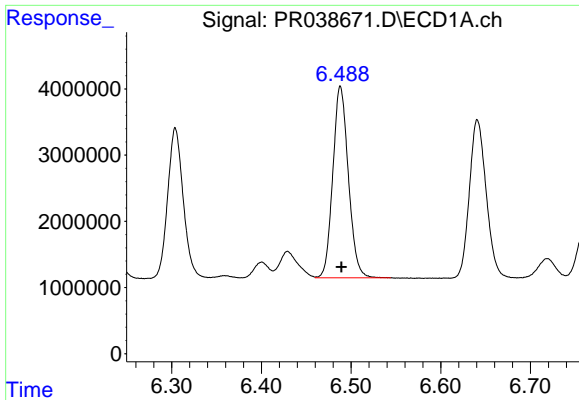
#31 AR-1260-1

R.T.: 6.304 min
 Delta R.T.: 0.000 min
 Response: 27184266
 Conc: 242.20 ng/ml



#31 AR-1260-1

R.T.: 7.360 min
 Delta R.T.: -0.002 min
 Response: 65405386
 Conc: 238.72 ng/ml

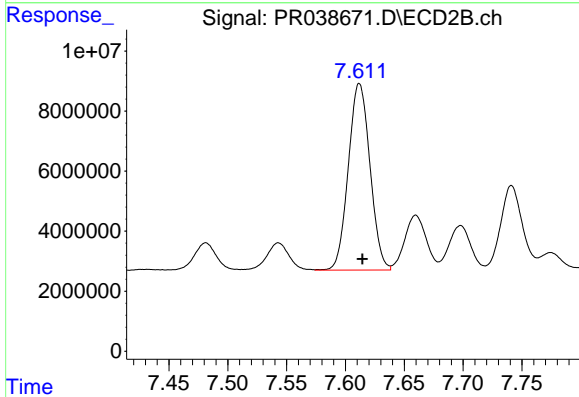


#32 AR-1260-2

R.T.: 6.488 min
 Delta R.T.: -0.001 min
 Response: 34861064
 Conc: 240.07 ng/ml

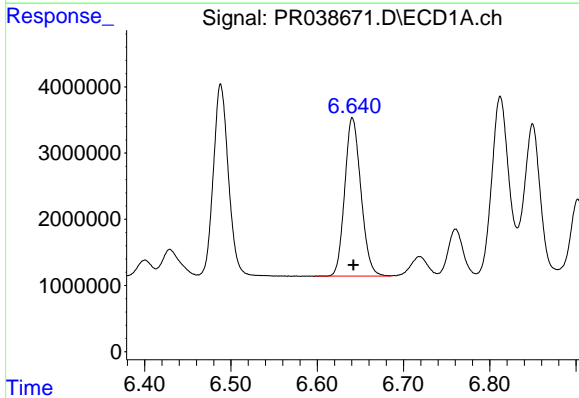
Instrument :
 ECD_R
ClientSampled :
 PB120421BS

Manual Integrations
APPROVED
 Ankita
 6/13/2019 1:50:11 PM



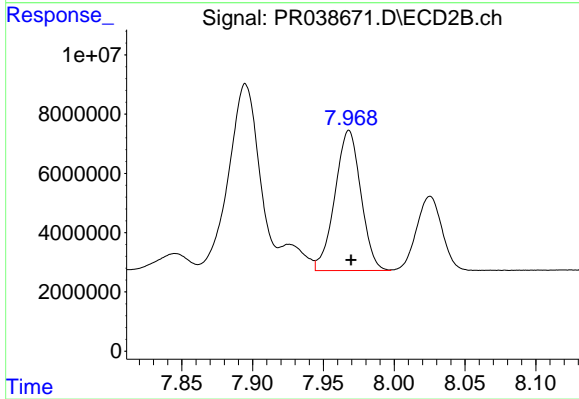
#32 AR-1260-2

R.T.: 7.612 min
 Delta R.T.: -0.002 min
 Response: 79737422
 Conc: 242.23 ng/ml



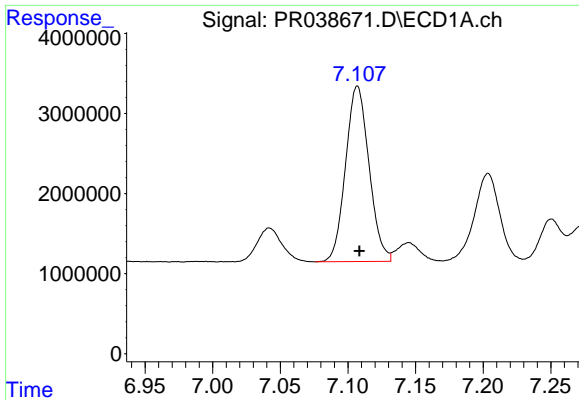
#33 AR-1260-3

R.T.: 6.641 min
 Delta R.T.: -0.001 min
 Response: 31174707
 Conc: 239.65 ng/ml



#33 AR-1260-3

R.T.: 7.968 min
 Delta R.T.: -0.001 min
 Response: 60349435
 Conc: 238.33 ng/ml

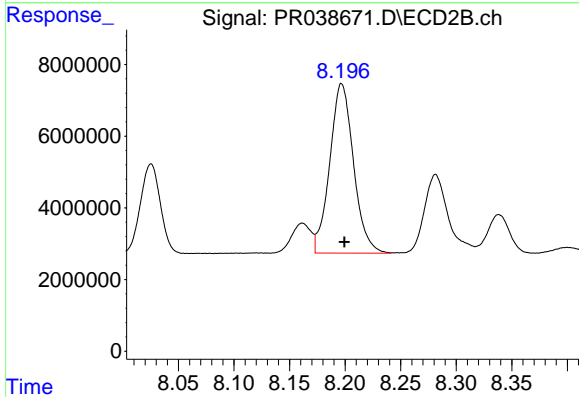


#34 AR-1260-4

R.T.: 7.107 min
 Delta R.T.: -0.001 min
 Response: 26450736
 Conc: 240.70 ng/ml

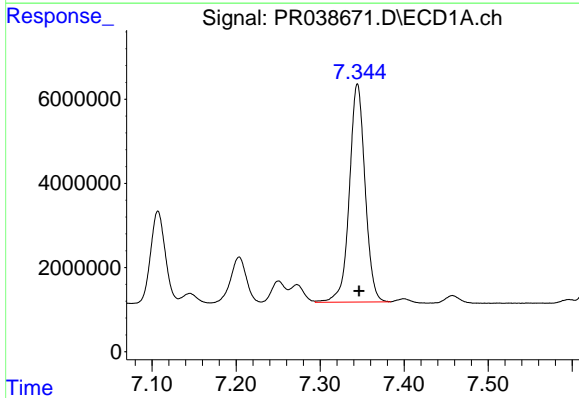
Instrument :
 ECD_R
ClientSampled :
 PB120421BS

Manual Integrations
APPROVED
 Ankita
 6/13/2019 1:50:11 PM



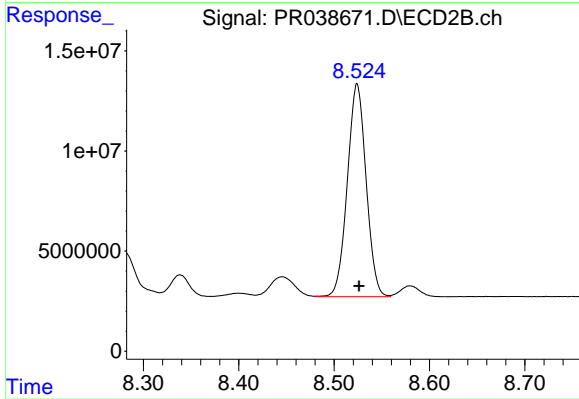
#34 AR-1260-4

R.T.: 8.197 min
 Delta R.T.: -0.003 min
 Response: 70524174
 Conc: 235.83 ng/ml



#35 AR-1260-5

R.T.: 7.344 min
 Delta R.T.: -0.002 min
 Response: 67330057
 Conc: 235.62 ng/ml



#35 AR-1260-5

R.T.: 8.524 min
 Delta R.T.: -0.002 min
 Response: 145556622
 Conc: 234.17 ng/ml