

Data Path : Z:\pestpcbsrv\HPCHEM1\ECD\_R\Data\PR062019\  
 Data File : PR038820.D  
 Signal(s) : Signal #1: ECD1A.ch Signal #2: ECD2B.ch  
 Acq On : 19 Jun 2019 18:33  
 Operator : SM\AJ  
 Sample : K3382-02  
 Misc :  
 ALS Vial : 9 Sample Multiplier: 1

Instrument :  
 ECD\_R  
 ClientSampleId :  
 SUMP

Integration File signal 1: autoint1.e  
 Integration File signal 2: autoint2.e  
 Quant Time: Jun 20 04:39:42 2019  
 Quant Method : Z:\pestpcbsrv\HPCHEM1\ECD\_R\Method\PR061119.M  
 Quant Title : GC EXTRACTABLES  
 QLast Update : Wed Jun 12 02:00:42 2019  
 Response via : Initial Calibration  
 Integrator: ChemStation

Volume Inj. : 2 µl  
 Signal #1 Phase : ZB-MR1 Signal #2 Phase: ZB-MR2  
 Signal #1 Info : 30Mx0.32mmx 0.50µ Signal #2 Info : 30M x 0.32mm x 0.25µm

Compound	RT#1	RT#2	Resp#1	Resp#2	ng/ml	ng/ml
----------	------	------	--------	--------	-------	-------

-----  
 System Monitoring Compounds

1) SA Tetrachlo...	3.770	4.618	28587570	92656103	19.593	18.585
2) SA Decachlor...	8.719	10.363	48868957	137.8E6	21.417	22.228

Target Compounds  
 -----

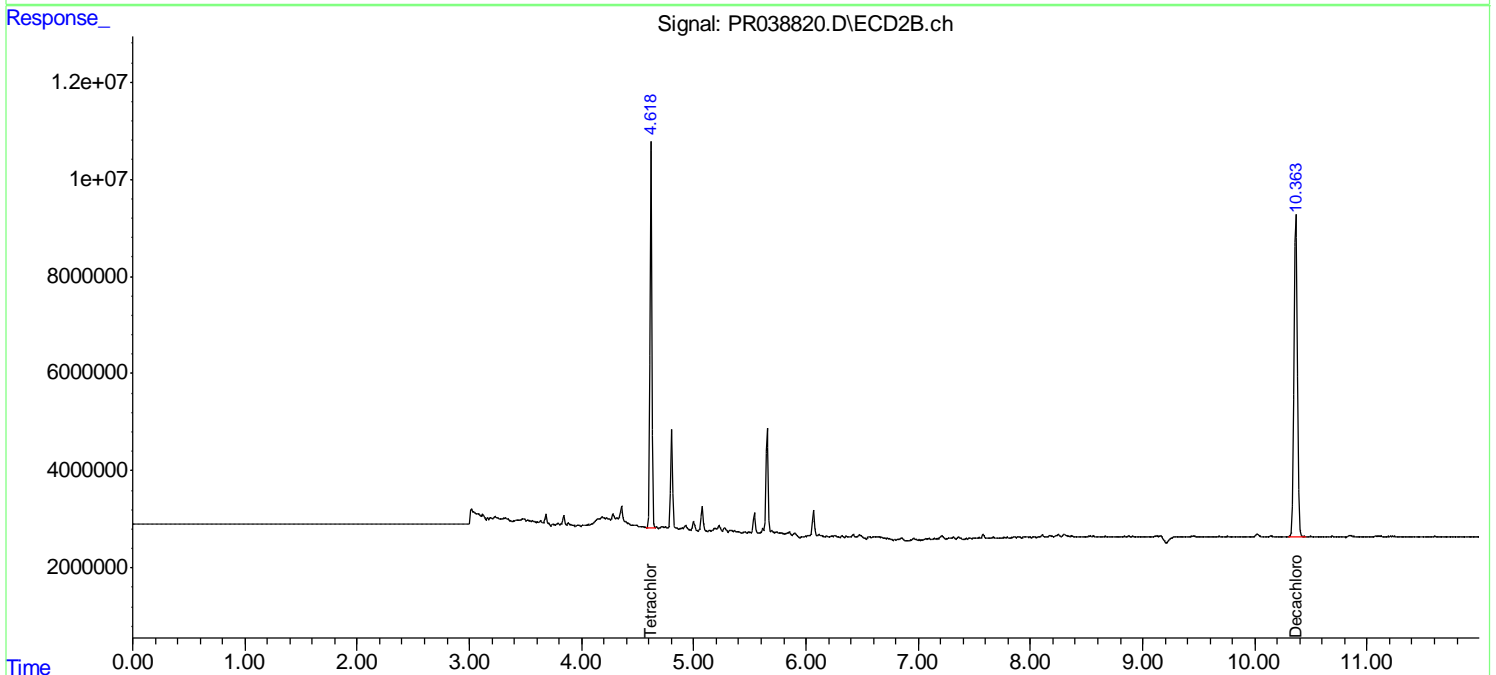
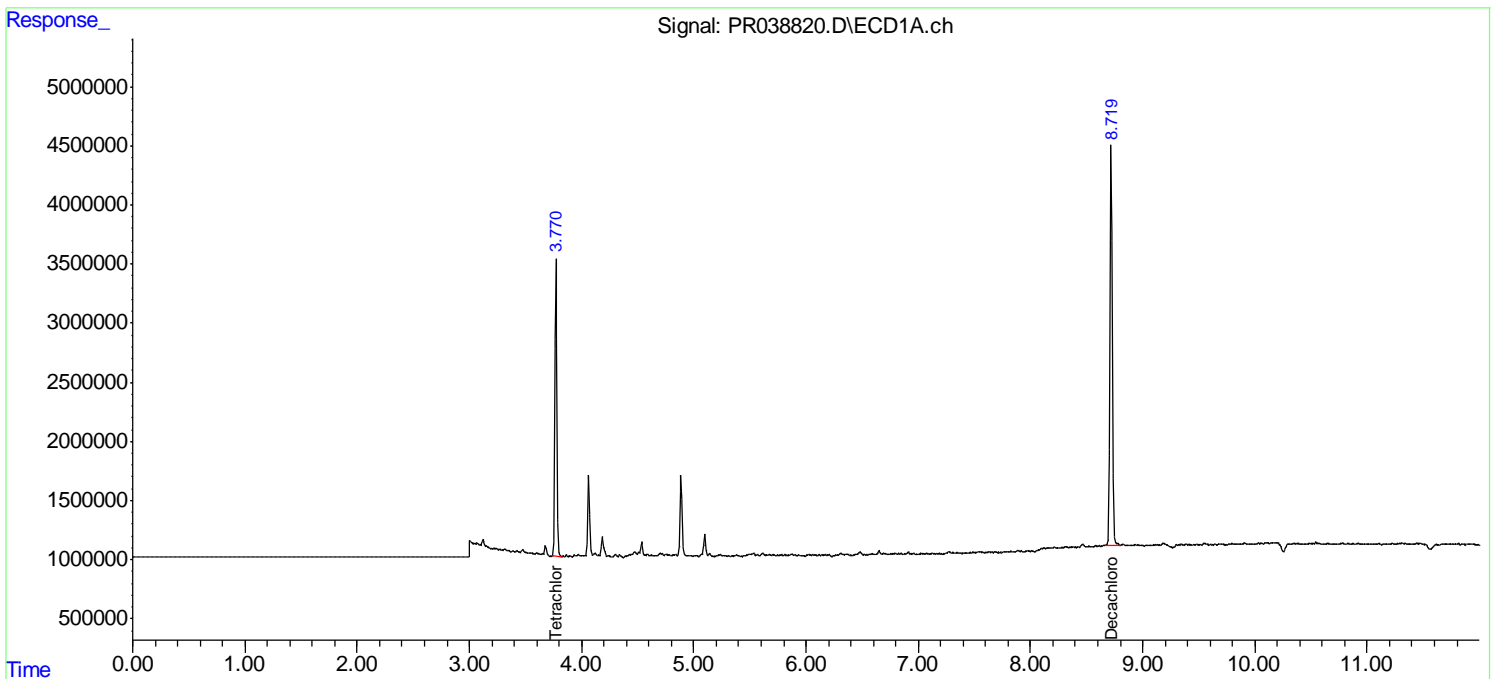
(f)=RT Delta > 1/2 Window (#)=Amounts differ by > 25% (m)=manual int.

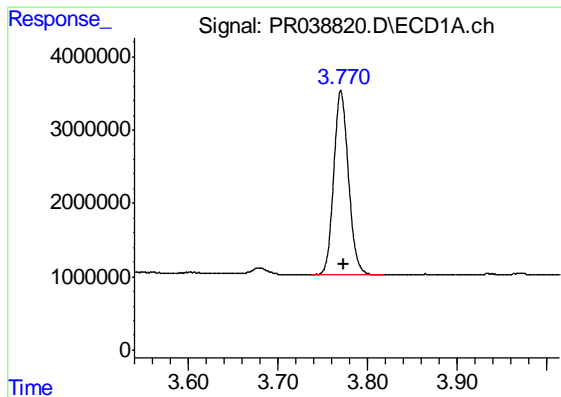
Data Path : Z:\pestpcbsrv\HPCHEM1\ECD\_R\Data\PR062019\  
 Data File : PR038820.D  
 Signal(s) : Signal #1: ECD1A.ch Signal #2: ECD2B.ch  
 Acq On : 19 Jun 2019 18:33  
 Operator : SM\AJ  
 Sample : K3382-02  
 Misc :  
 ALS Vial : 9 Sample Multiplier: 1

Instrument :  
 ECD\_R  
 ClientSampleId :  
 SUMP

Integration File signal 1: autoint1.e  
 Integration File signal 2: autoint2.e  
 Quant Time: Jun 20 04:39:42 2019  
 Quant Method : Z:\pestpcbsrv\HPCHEM1\ECD\_R\Method\PR061119.M  
 Quant Title : GC EXTRACTABLES  
 QLast Update : Wed Jun 12 02:00:42 2019  
 Response via : Initial Calibration  
 Integrator: ChemStation

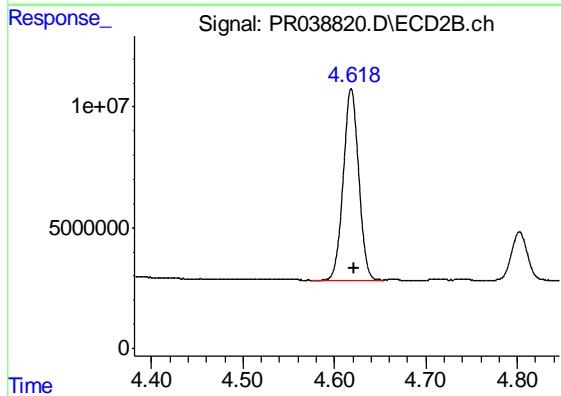
Volume Inj. : 2 µl  
 Signal #1 Phase : ZB-MR1 Signal #2 Phase: ZB-MR2  
 Signal #1 Info : 30Mx0.32mmx 0.50µ Signal #2 Info : 30M x 0.32mm x 0.25µm



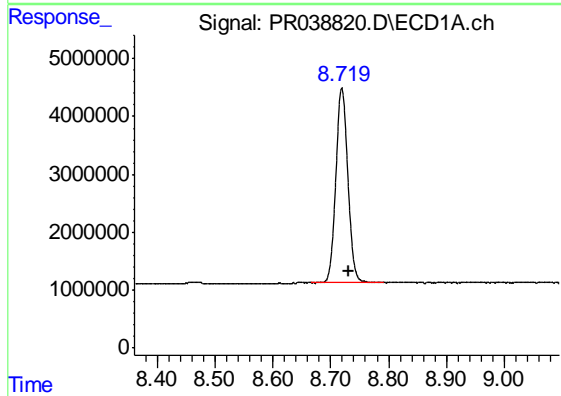


#1 Tetrachloro-m-xylene  
 R.T.: 3.770 min  
 Delta R.T.: -0.003 min  
 Response: 28587570  
 Conc: 19.59 ng/ml

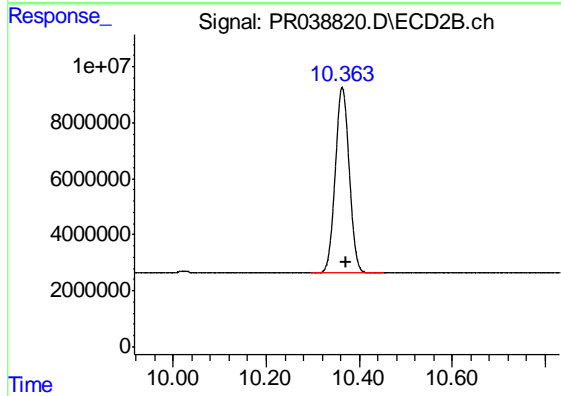
Instrument :  
 ECD\_R  
 ClientSampleId :  
 SUMP



#1 Tetrachloro-m-xylene  
 R.T.: 4.618 min  
 Delta R.T.: -0.002 min  
 Response: 92656103  
 Conc: 18.59 ng/ml



#2 Decachlorobiphenyl  
 R.T.: 8.719 min  
 Delta R.T.: -0.013 min  
 Response: 48868957  
 Conc: 21.42 ng/ml



#2 Decachlorobiphenyl  
 R.T.: 10.363 min  
 Delta R.T.: -0.010 min  
 Response: 137774289  
 Conc: 22.23 ng/ml