

Data Path : Z:\pestpcbsrv\HPCHEM1\ECD_R\Data\PR062019\
 Data File : PR038839.D
 Signal(s) : Signal #1: ECD1A.ch Signal #2: ECD2B.ch
 Acq On : 19 Jun 2019 23:08
 Operator : SM\AJ
 Sample : I.BLK
 Misc :
 ALS Vial : 2 Sample Multiplier: 1

Instrument :
 ECD_R
 ClientSampleId :
 I.BLK

Integration File signal 1: autoint1.e
 Integration File signal 2: autoint2.e
 Quant Time: Jun 20 04:46:47 2019
 Quant Method : Z:\pestpcbsrv\HPCHEM1\ECD_R\Method\PR061119.M
 Quant Title : GC EXTRACTABLES
 QLast Update : Wed Jun 12 02:00:42 2019
 Response via : Initial Calibration
 Integrator: ChemStation

Volume Inj. : 2 µl
 Signal #1 Phase : ZB-MR1 Signal #2 Phase: ZB-MR2
 Signal #1 Info : 30Mx0.32mmx 0.50µ Signal #2 Info : 30M x 0.32mm x 0.25µm

Compound	RT#1	RT#2	Resp#1	Resp#2	ng/ml	ng/ml
----------	------	------	--------	--------	-------	-------

 System Monitoring Compounds

1) SA Tetrachlo...	3.769	4.617	33799324	110.4E6	23.165	22.143
2) SA Decachlor...	8.718	10.362	49083327	136.1E6	21.511	21.951

Target Compounds

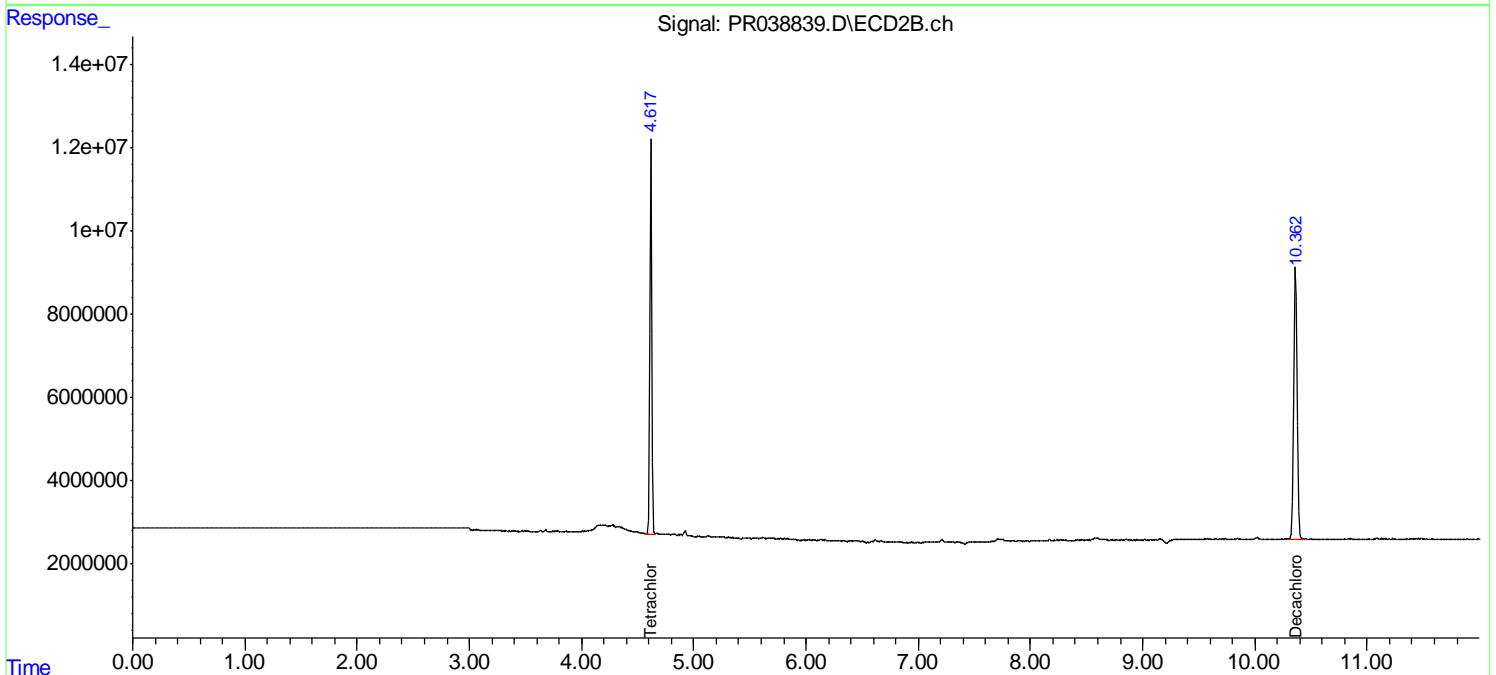
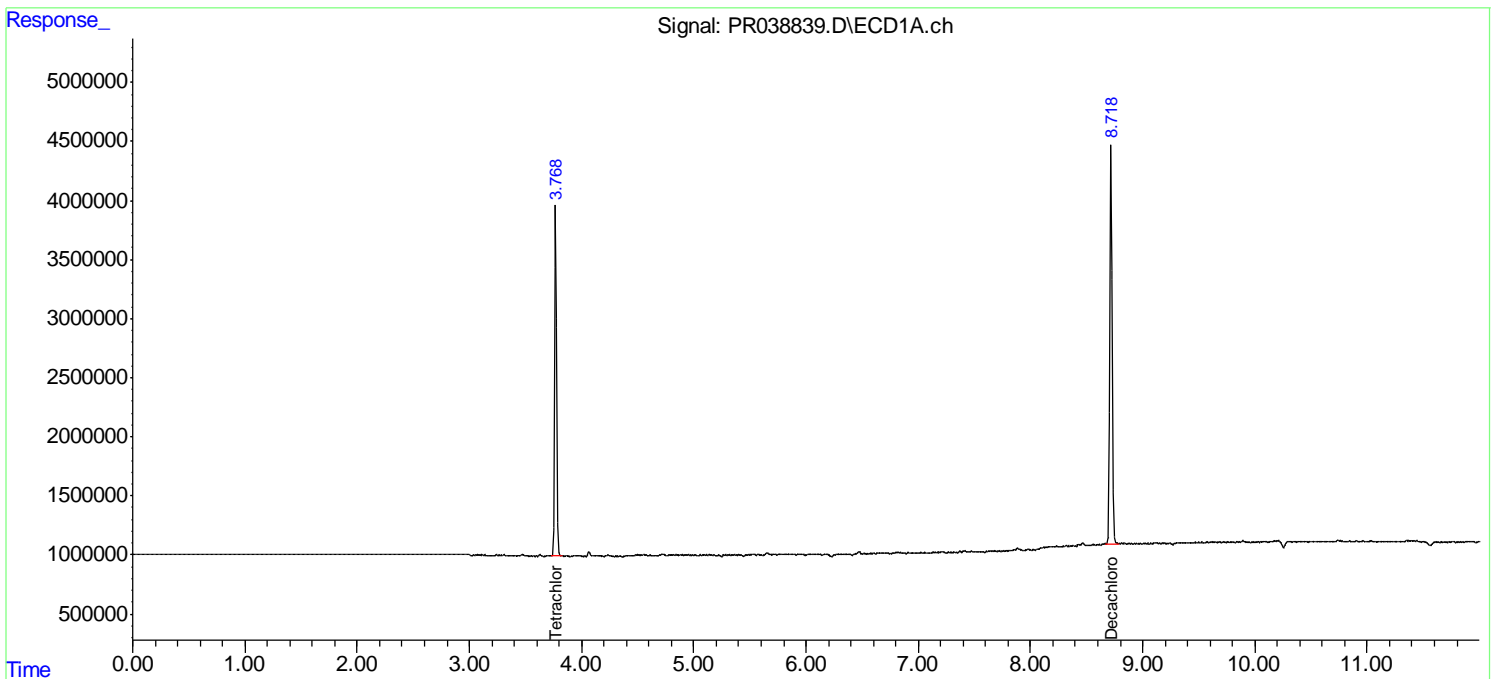
(f)=RT Delta > 1/2 Window (#)=Amounts differ by > 25% (m)=manual int.

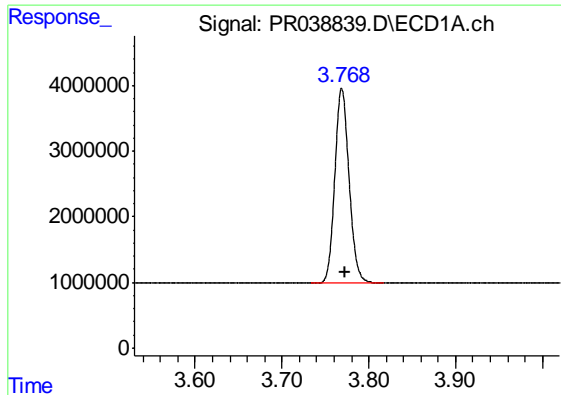
Data Path : Z:\pestpcbsrv\HPCHEM1\ECD_R\Data\PR062019\
 Data File : PR038839.D
 Signal(s) : Signal #1: ECD1A.ch Signal #2: ECD2B.ch
 Acq On : 19 Jun 2019 23:08
 Operator : SM\AJ
 Sample : I.BLK
 Misc :
 ALS Vial : 2 Sample Multiplier: 1

Instrument :
 ECD_R
 ClientSampleId :
 I.BLK

Integration File signal 1: autoint1.e
 Integration File signal 2: autoint2.e
 Quant Time: Jun 20 04:46:47 2019
 Quant Method : Z:\pestpcbsrv\HPCHEM1\ECD_R\Method\PR061119.M
 Quant Title : GC EXTRACTABLES
 QLast Update : Wed Jun 12 02:00:42 2019
 Response via : Initial Calibration
 Integrator: ChemStation

Volume Inj. : 2 µl
 Signal #1 Phase : ZB-MR1 Signal #2 Phase: ZB-MR2
 Signal #1 Info : 30Mx0.32mmx 0.50µ Signal #2 Info : 30M x 0.32mm x 0.25µm

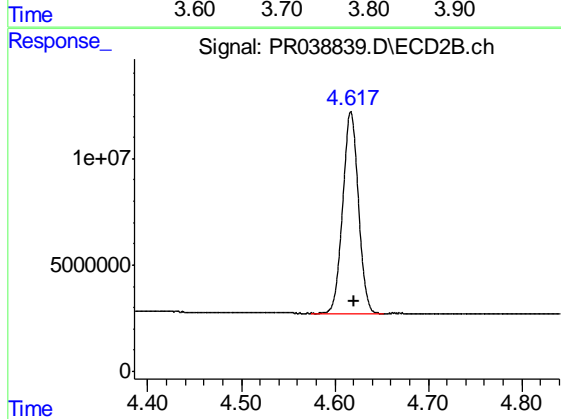




#1 Tetrachloro-m-xylene

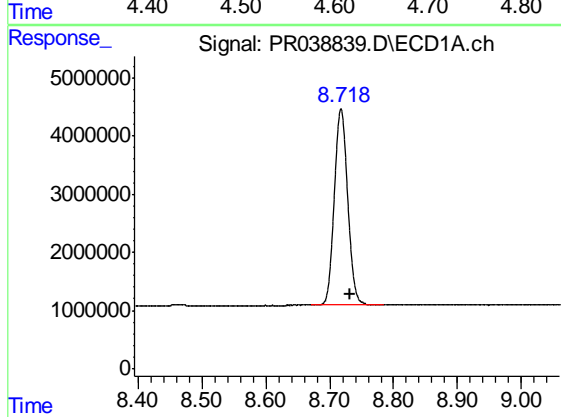
R.T.: 3.769 min
 Delta R.T.: -0.004 min
 Response: 33799324
 Conc: 23.16 ng/ml

Instrument :
 ECD_R
 ClientSampleId :
 I.BLK



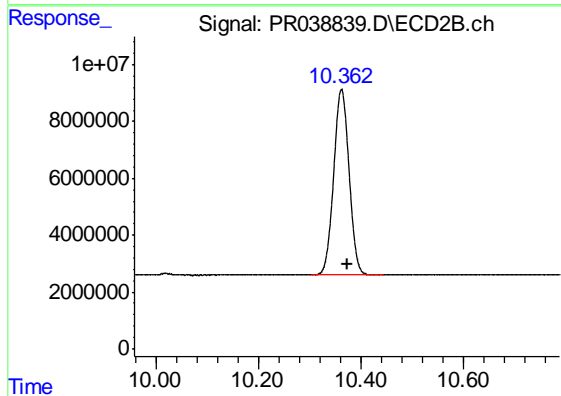
#1 Tetrachloro-m-xylene

R.T.: 4.617 min
 Delta R.T.: -0.003 min
 Response: 110393183
 Conc: 22.14 ng/ml



#2 Decachlorobiphenyl

R.T.: 8.718 min
 Delta R.T.: -0.014 min
 Response: 49083327
 Conc: 21.51 ng/ml



#2 Decachlorobiphenyl

R.T.: 10.362 min
 Delta R.T.: -0.011 min
 Response: 136056433
 Conc: 21.95 ng/ml