

Data Path : Z:\pestpcbsrv\HPCHEM1\ECD\_R\Data\PR062218\  
 Data File : PR029164.D  
 Signal(s) : Signal #1: ECD1A.ch Signal #2: ECD2B.ch  
 Acq On : 15 Jun 2018 20:37  
 Operator : UA/SM  
 Sample : AR1242 LOQ WATER 2  
 Misc :  
 ALS Vial : 18 Sample Multiplier: 1

Instrument :  
 ECD\_R  
 ClientSampled :

Integration File signal 1: autoint1.e  
 Integration File signal 2: autoint2.e  
 Quant Time: Jun 16 02:56:44 2018  
 Quant Method : \\TERASTORAGE\Terastorage\pestpcbsrv\HPCHEM1\ECD\_R\Method\PR061018.M  
 Quant Title : GC EXTRACTABLES  
 QLast Update : Wed Jun 06 14:28:54 2018  
 Response via : Initial Calibration  
 Integrator: ChemStation

Volume Inj. : 2 µl  
 Signal #1 Phase : ZB-MR2 Signal #2 Phase: ZB-MR2  
 Signal #1 Info : 30Mx0.32mmx 0.50µ Signal #2 Info : 30M x 0.32mm x 0.25µm

Compound	RT#1	RT#2	Resp#1	Resp#2	ng/ml	ng/ml
-----						
System Monitoring Compounds						
1) SA Tetrachlo...	4.574	3.721	446.6E6	693.9E6	18.093	14.231
2) SA Decachlor...	10.350	8.669	507.0E6	795.6E6	23.842	13.954 #
Target Compounds						
3) L1 AR-1016-1	5.466	4.576	27413375	55352872	49.257	40.020
4) L1 AR-1016-2	5.817	4.986	40347531	48660222	56.046	34.645 #
5) L1 AR-1016-3	5.915	5.066	33635593	45119529	55.883	32.532 #
6) L1 AR-1016-4	6.208	5.237	34883307	58848553	60.513	38.265 #
7) L1 AR-1016-5	6.350	5.583	36604020	81763753	58.011	54.980
10) L2 AR-1221-3	4.939	4.092	21510169	34438836	22.706	16.239 #
11) L3 AR-1232-1	4.939	4.092	21510169	34438836	50.401	36.125 #
12) L3 AR-1232-2	5.466	4.986	27413375	48660222	111.565	83.366 #
13) L3 AR-1232-3	5.817	5.025	40347531	39503304	129.837	91.082 #
14) L3 AR-1232-4	5.915	5.583	33635593	81763753	132.705	134.212
15) L3 AR-1232-5	6.350	5.623	36604020	63919036	145.939	142.732
16) L4 AR-1242-1	5.466	4.576	27413375	55352872	69.858	59.392
17) L4 AR-1242-2	5.732	4.811	46841040	109.4E6	83.768	52.506 #
18) L4 AR-1242-3	5.817	5.025	40347531	39503304	81.467	51.238 #
19) L4 AR-1242-4	5.915	5.066	33635593	45119529	81.176	46.340 #
20) L4 AR-1242-5	6.208	5.277	34883307	19293080	86.382	43.731 #
21) L5 AR-1248-1	6.004	5.025	24973712	39503304	40.808	27.016 #
22) L5 AR-1248-2	6.208	5.066	34883307	45119529	51.319	79.785 #
23) L5 AR-1248-3	6.582	5.237	29133252	58848553	50.493	32.937 #
24) L5 AR-1248-4	6.647	5.583	40742271	81763753	54.317	31.939 #
25) L5 AR-1248-5	6.805	5.623	35086593	63919036	45.900	35.706
26) L6 AR-1254-1	6.004	5.025	24973712	39503304	58.299	37.208 #
27) L6 AR-1254-2	6.805	5.797	35086593	55893784	29.066	23.307
28) L6 AR-1254-3	7.166	0.000	17750745	0	13.211	N.D. #
29) L6 AR-1254-4	7.449	0.000	14967297	0	14.966	N.D. #

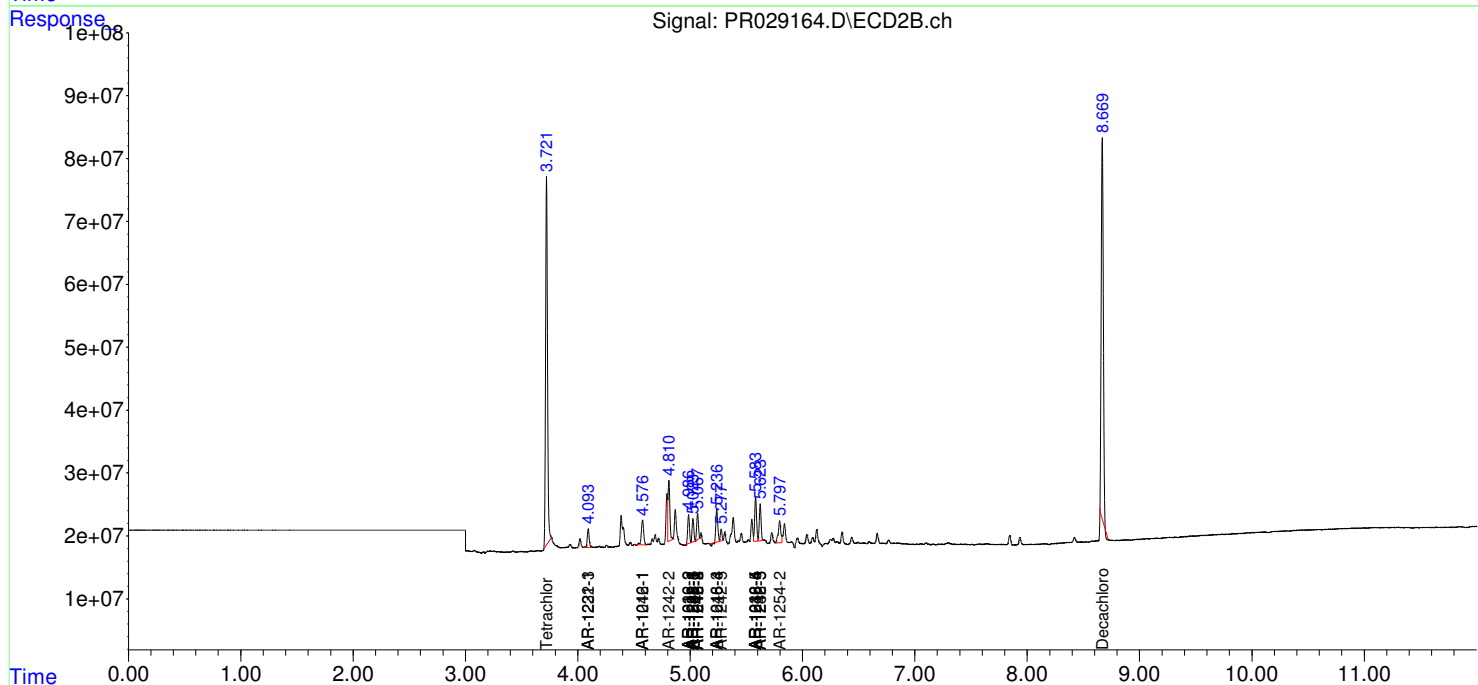
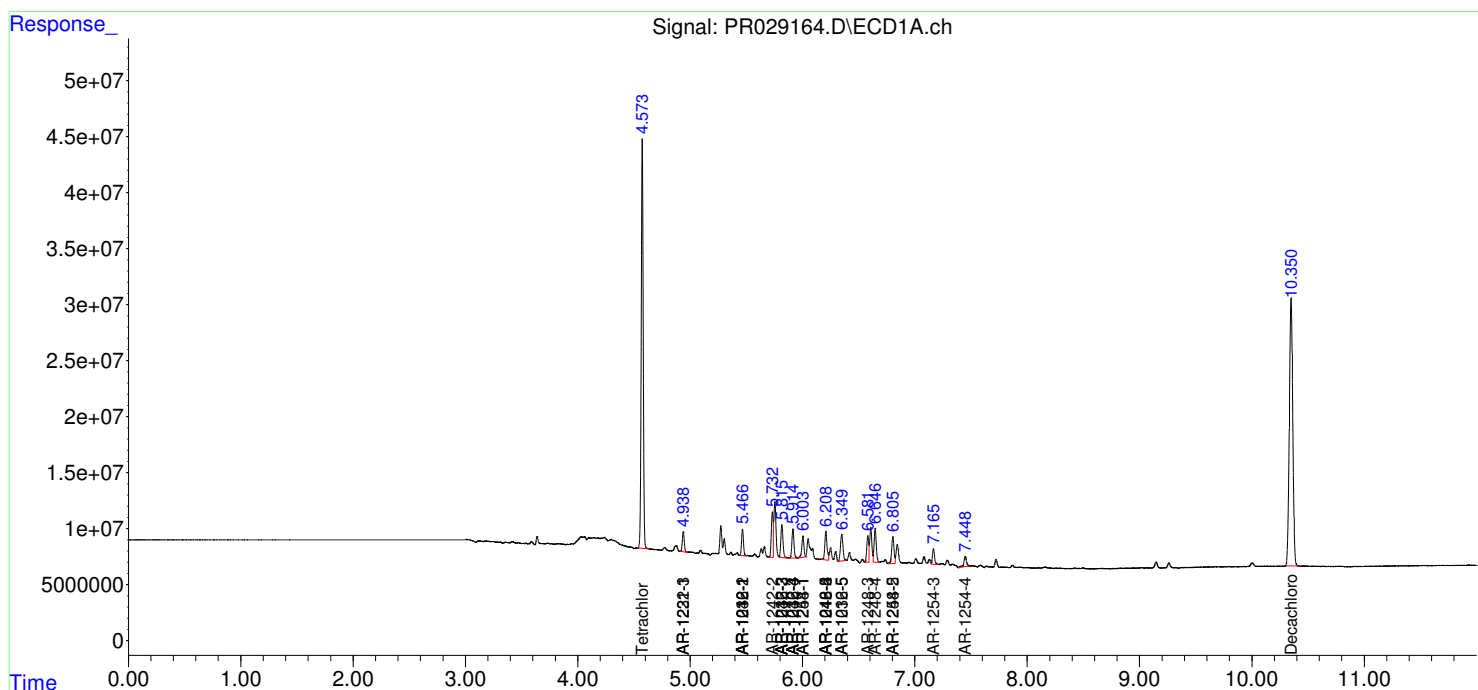
(f)=RT Delta > 1/2 Window (#)=Amounts differ by > 25% (m)=manual int.

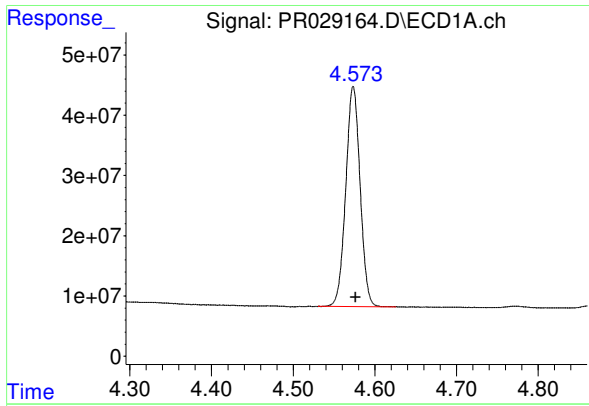
Data Path : Z:\pestpcbsrv\HPCHEM1\ECD\_R\Data\PR062218\  
 Data File : PR029164.D  
 Signal(s) : Signal #1: ECD1A.ch Signal #2: ECD2B.ch  
 Acq On : 15 Jun 2018 20:37  
 Operator : UA/SM  
 Sample : AR1242 LOQ WATER 2  
 Misc :  
 ALS Vial : 18 Sample Multiplier: 1

Instrument :  
 ECD\_R  
 ClientSampled :

Integration File signal 1: autoint1.e  
 Integration File signal 2: autoint2.e  
 Quant Time: Jun 16 02:56:44 2018  
 Quant Method : \\TERASTORAGE\Terastorage\pestpcbsrv\HPCHEM1\ECD\_R\Method\PR061018.M  
 Quant Title : GC EXTRACTABLES  
 QLast Update : Wed Jun 06 14:28:54 2018  
 Response via : Initial Calibration  
 Integrator: ChemStation

Volume Inj. : 2 µl  
 Signal #1 Phase : ZB-MR1 Signal #2 Phase: ZB-MR2  
 Signal #1 Info : 30Mx0.32mmx 0.50µ Signal #2 Info : 30M x 0.32mm x 0.25µm

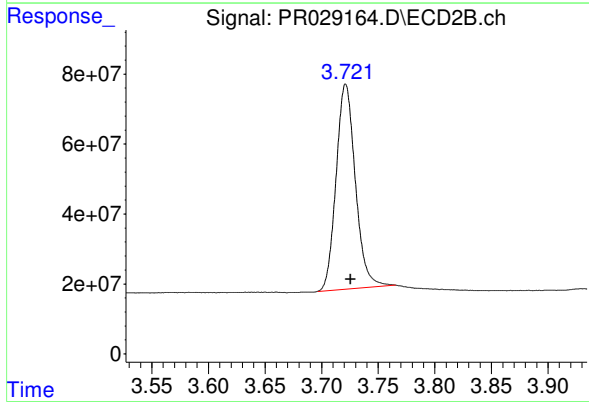




#1 Tetrachloro-m-xylene

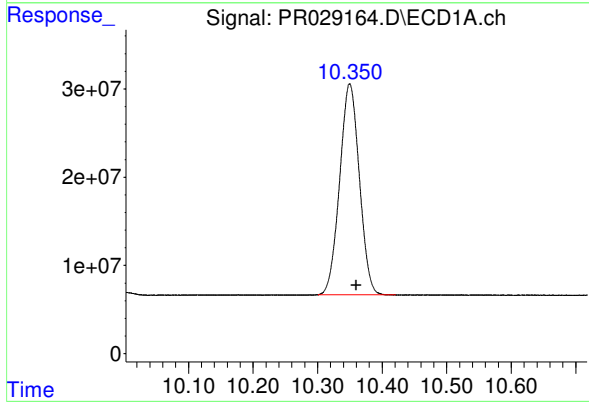
R.T.: 4.574 min  
 Delta R.T.: -0.002 min  
 Response: 446551809  
 Conc: 18.09 ng/ml

Instrument :  
 ECD\_R  
 ClientSampleId :



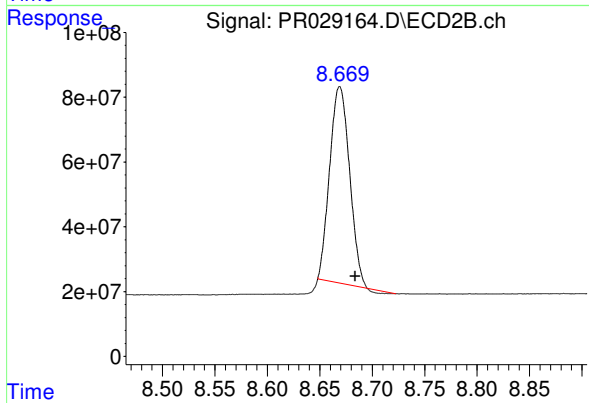
#1 Tetrachloro-m-xylene

R.T.: 3.721 min  
 Delta R.T.: -0.004 min  
 Response: 693919562  
 Conc: 14.23 ng/ml



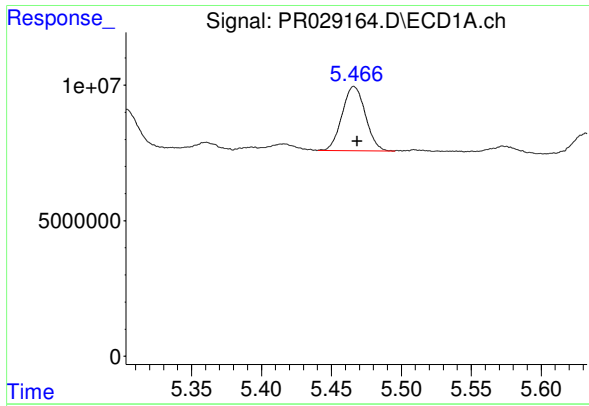
#2 Decachlorobiphenyl

R.T.: 10.350 min  
 Delta R.T.: -0.010 min  
 Response: 506994554  
 Conc: 23.84 ng/ml



#2 Decachlorobiphenyl

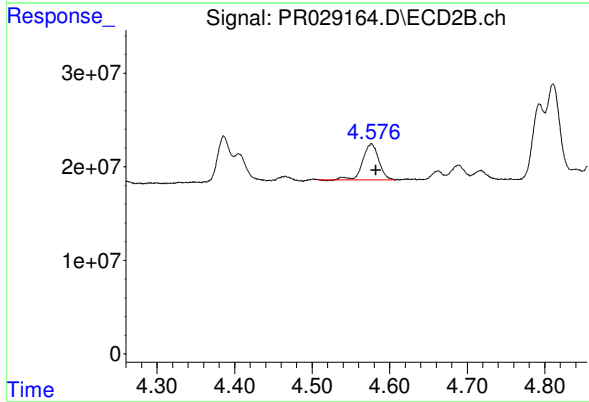
R.T.: 8.669 min  
 Delta R.T.: -0.015 min  
 Response: 795601316  
 Conc: 13.95 ng/ml



#3 AR-1016-1

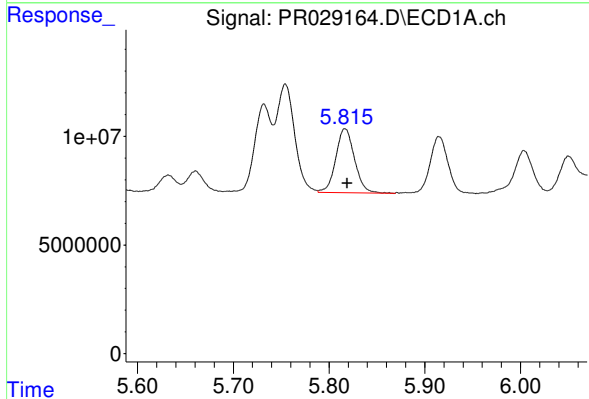
R.T.: 5.466 min  
 Delta R.T.: -0.002 min  
 Response: 27413375  
 Conc: 49.26 ng/ml

Instrument :  
 ECD\_R  
 ClientSampleId :



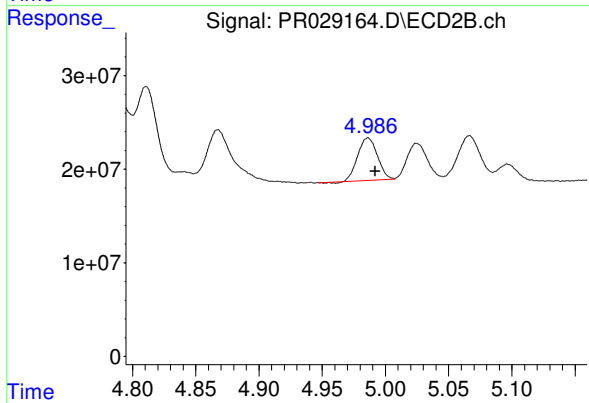
#3 AR-1016-1

R.T.: 4.576 min  
 Delta R.T.: -0.006 min  
 Response: 55352872  
 Conc: 40.02 ng/ml



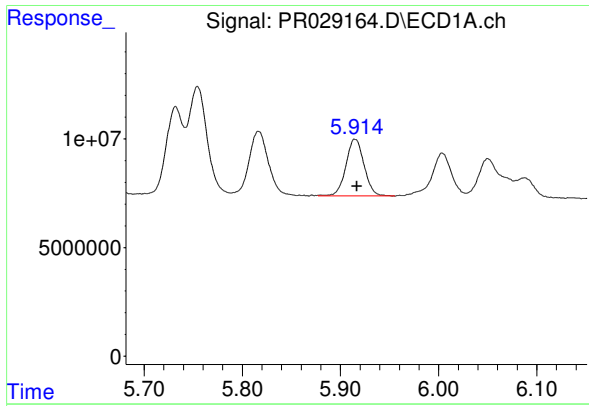
#4 AR-1016-2

R.T.: 5.817 min  
 Delta R.T.: -0.002 min  
 Response: 40347531  
 Conc: 56.05 ng/ml



#4 AR-1016-2

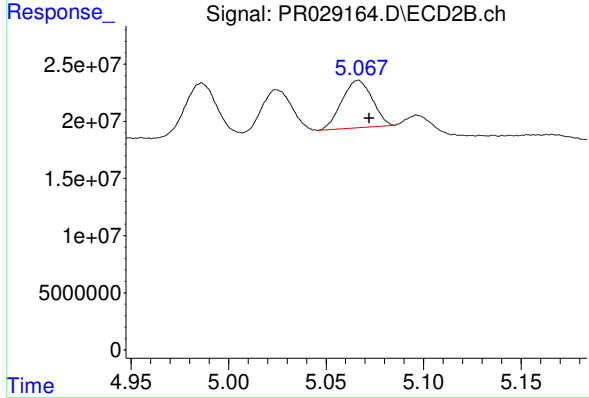
R.T.: 4.986 min  
 Delta R.T.: -0.006 min  
 Response: 48660222  
 Conc: 34.64 ng/ml



#5 AR-1016-3

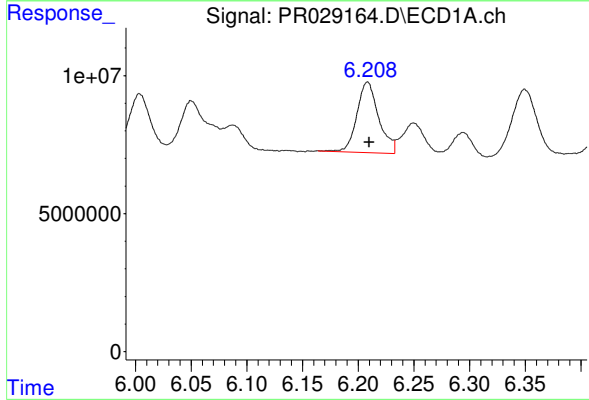
R.T.: 5.915 min  
 Delta R.T.: -0.002 min  
 Response: 33635593  
 Conc: 55.88 ng/ml

Instrument :  
 ECD\_R  
 ClientSampleId :



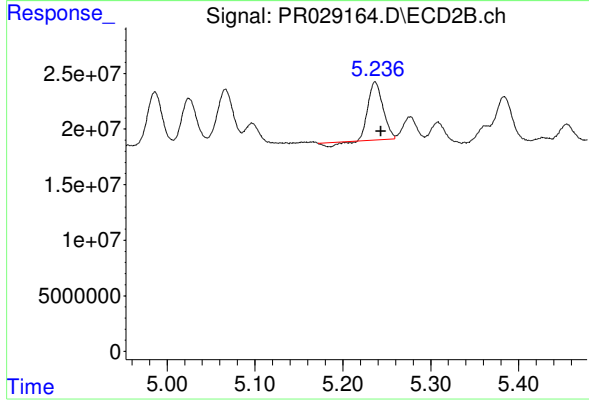
#5 AR-1016-3

R.T.: 5.066 min  
 Delta R.T.: -0.006 min  
 Response: 45119529  
 Conc: 32.53 ng/ml



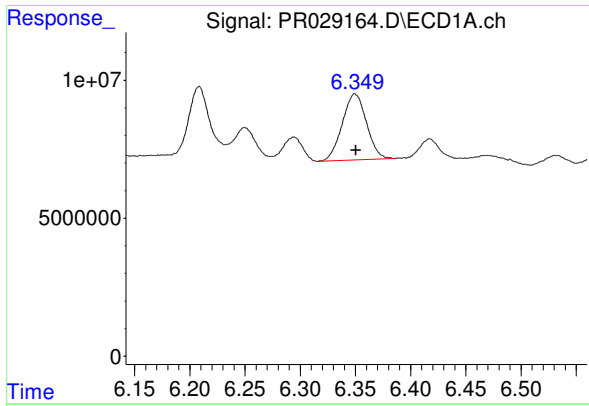
#6 AR-1016-4

R.T.: 6.208 min  
 Delta R.T.: -0.001 min  
 Response: 34883307  
 Conc: 60.51 ng/ml



#6 AR-1016-4

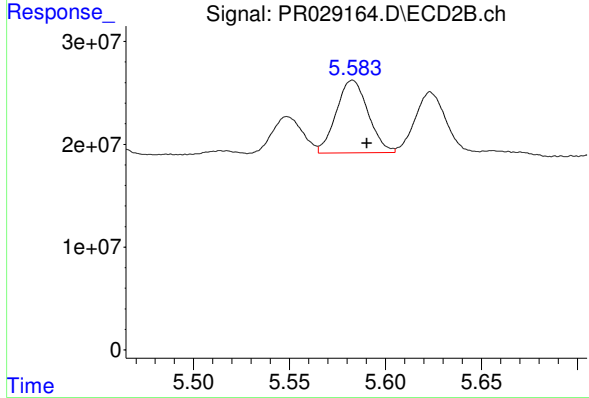
R.T.: 5.237 min  
 Delta R.T.: -0.006 min  
 Response: 58848553  
 Conc: 38.26 ng/ml



#7 AR-1016-5

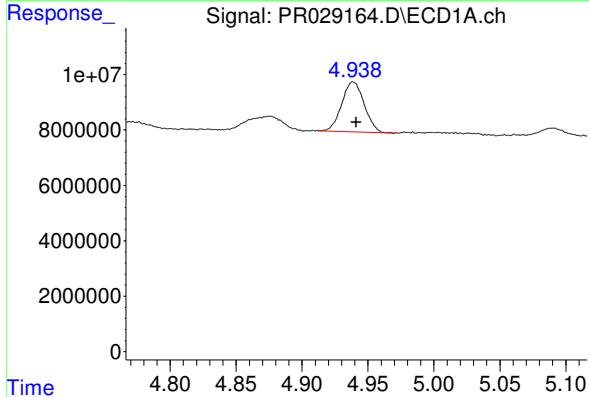
R.T.: 6.350 min  
 Delta R.T.: 0.000 min  
 Response: 36604020  
 Conc: 58.01 ng/ml

Instrument :  
 ECD\_R  
 ClientSampled :



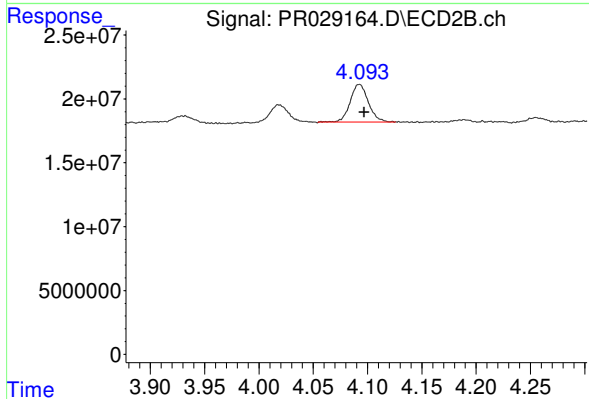
#7 AR-1016-5

R.T.: 5.583 min  
 Delta R.T.: -0.007 min  
 Response: 81763753  
 Conc: 54.98 ng/ml



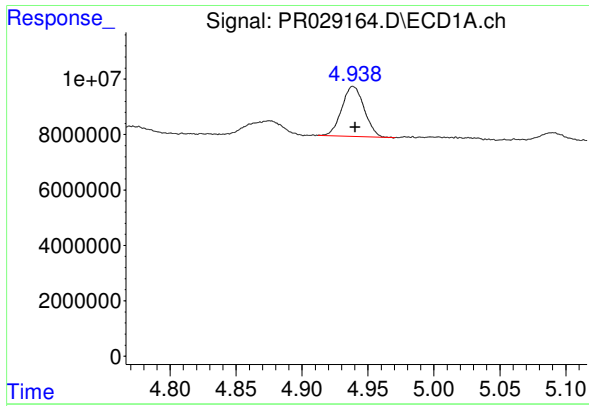
#10 AR-1221-3

R.T.: 4.939 min  
 Delta R.T.: -0.002 min  
 Response: 21510169  
 Conc: 22.71 ng/ml



#10 AR-1221-3

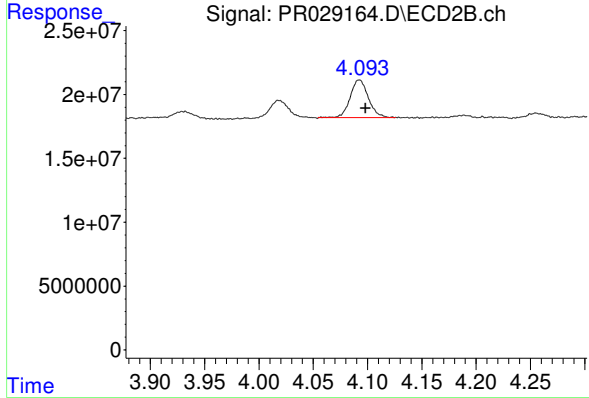
R.T.: 4.092 min  
 Delta R.T.: -0.005 min  
 Response: 34438836  
 Conc: 16.24 ng/ml



#11 AR-1232-1

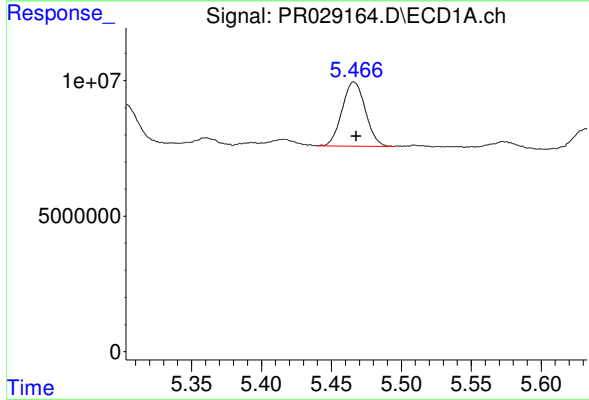
R.T.: 4.939 min  
 Delta R.T.: -0.001 min  
 Response: 21510169  
 Conc: 50.40 ng/ml

Instrument :  
 ECD\_R  
 ClientSampleId :



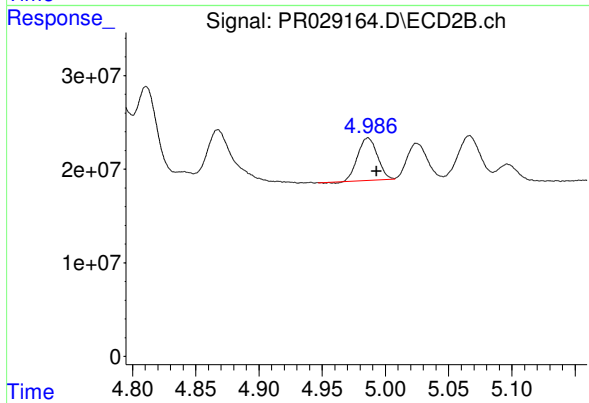
#11 AR-1232-1

R.T.: 4.092 min  
 Delta R.T.: -0.006 min  
 Response: 34438836  
 Conc: 36.13 ng/ml



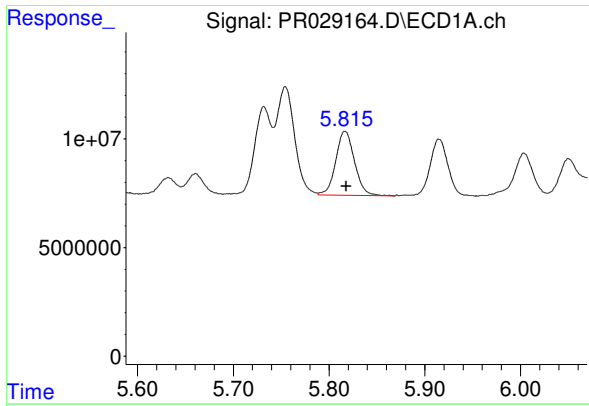
#12 AR-1232-2

R.T.: 5.466 min  
 Delta R.T.: -0.002 min  
 Response: 27413375  
 Conc: 111.57 ng/ml



#12 AR-1232-2

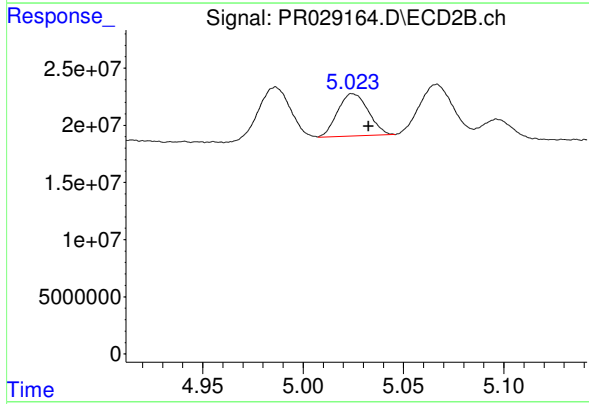
R.T.: 4.986 min  
 Delta R.T.: -0.007 min  
 Response: 48660222  
 Conc: 83.37 ng/ml



#13 AR-1232-3

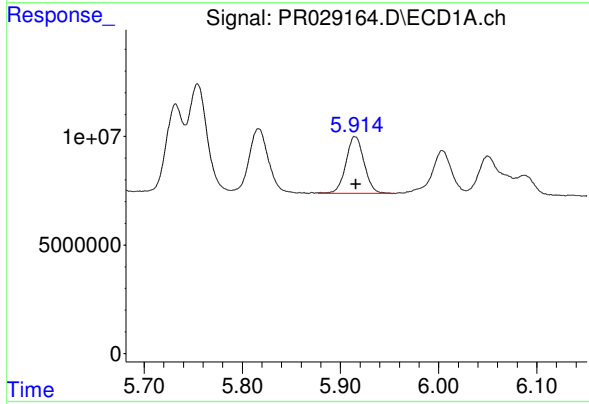
R.T.: 5.817 min  
 Delta R.T.: -0.001 min  
 Response: 40347531  
 Conc: 129.84 ng/ml

Instrument :  
 ECD\_R  
 ClientSampleId :



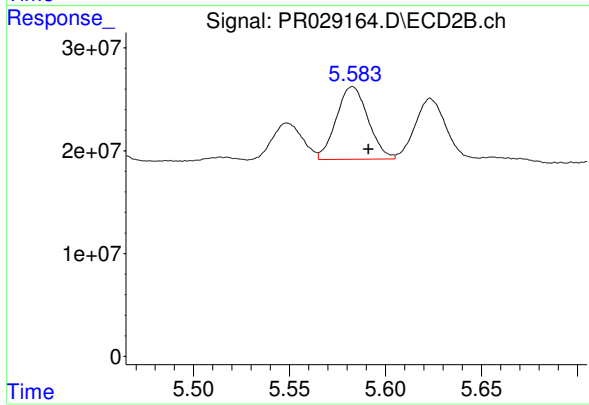
#13 AR-1232-3

R.T.: 5.025 min  
 Delta R.T.: -0.008 min  
 Response: 39503304  
 Conc: 91.08 ng/ml



#14 AR-1232-4

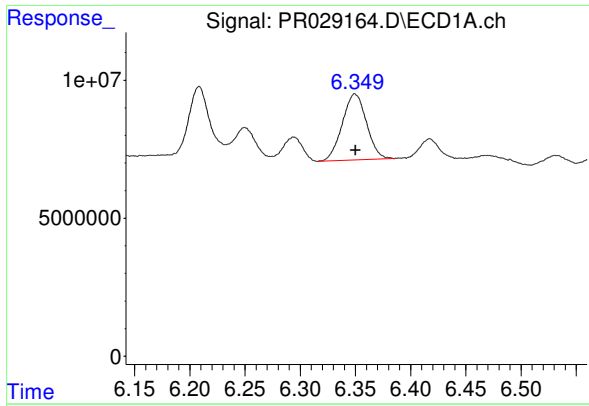
R.T.: 5.915 min  
 Delta R.T.: 0.000 min  
 Response: 33635593  
 Conc: 132.70 ng/ml



#14 AR-1232-4

R.T.: 5.583 min  
 Delta R.T.: -0.008 min  
 Response: 81763753  
 Conc: 134.21 ng/ml

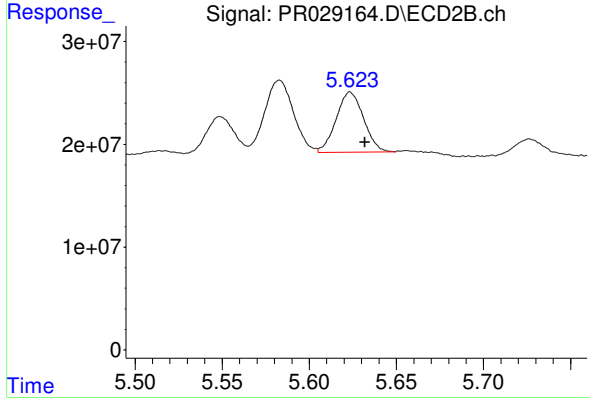




#15 AR-1232-5

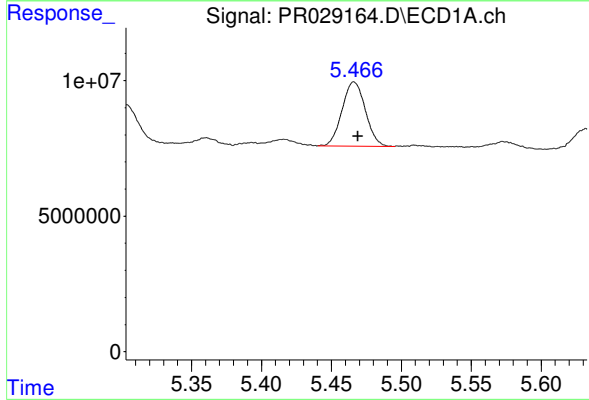
R.T.: 6.350 min  
 Delta R.T.: 0.000 min  
 Response: 36604020  
 Conc: 145.94 ng/ml

Instrument :  
 ECD\_R  
 ClientSampled :



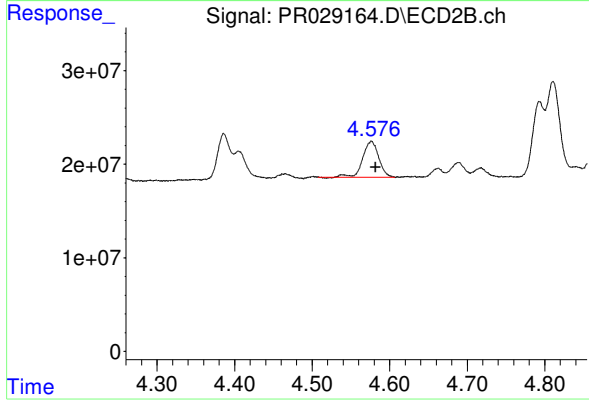
#15 AR-1232-5

R.T.: 5.623 min  
 Delta R.T.: -0.009 min  
 Response: 63919036  
 Conc: 142.73 ng/ml



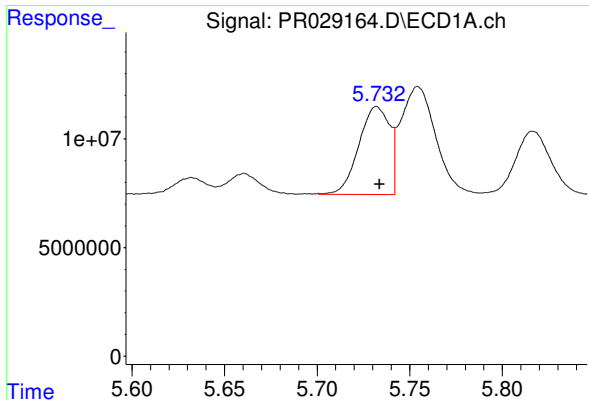
#16 AR-1242-1

R.T.: 5.466 min  
 Delta R.T.: -0.003 min  
 Response: 27413375  
 Conc: 69.86 ng/ml



#16 AR-1242-1

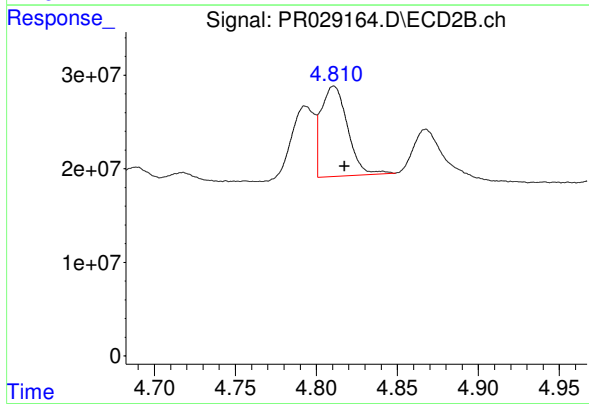
R.T.: 4.576 min  
 Delta R.T.: -0.005 min  
 Response: 55352872  
 Conc: 59.39 ng/ml



#17 AR-1242-2

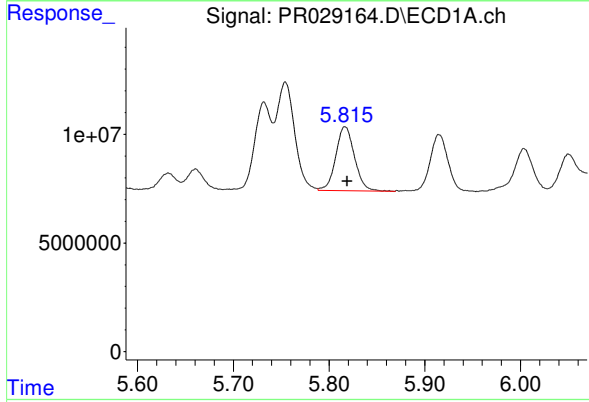
R.T.: 5.732 min  
 Delta R.T.: -0.002 min  
 Response: 46841040  
 Conc: 83.77 ng/ml

Instrument :  
 ECD\_R  
 ClientSampleId :



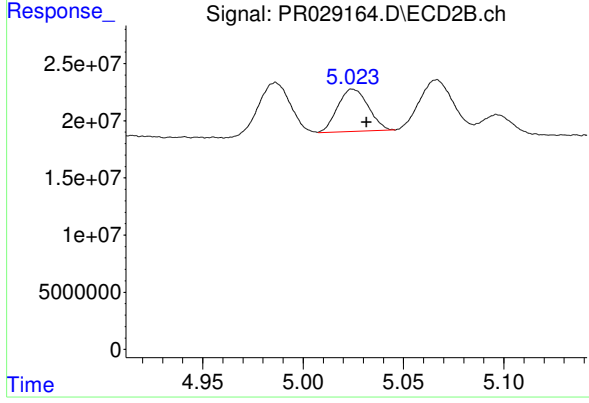
#17 AR-1242-2

R.T.: 4.811 min  
 Delta R.T.: -0.007 min  
 Response: 109390177  
 Conc: 52.51 ng/ml



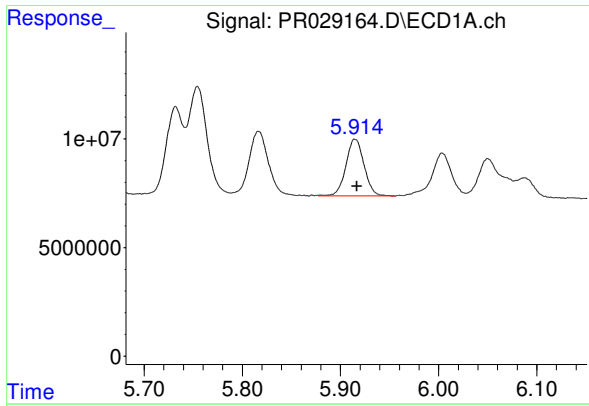
#18 AR-1242-3

R.T.: 5.817 min  
 Delta R.T.: -0.002 min  
 Response: 40347531  
 Conc: 81.47 ng/ml



#18 AR-1242-3

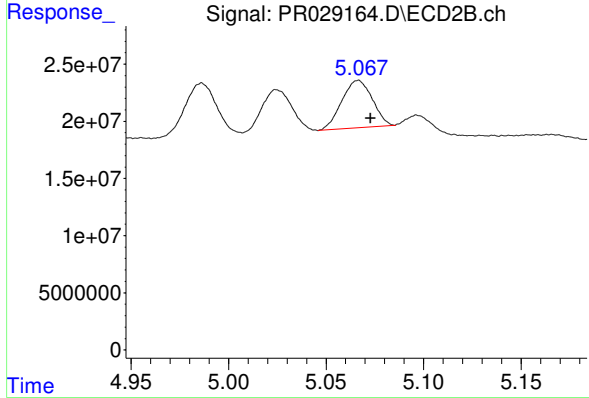
R.T.: 5.025 min  
 Delta R.T.: -0.007 min  
 Response: 39503304  
 Conc: 51.24 ng/ml



#19 AR-1242-4

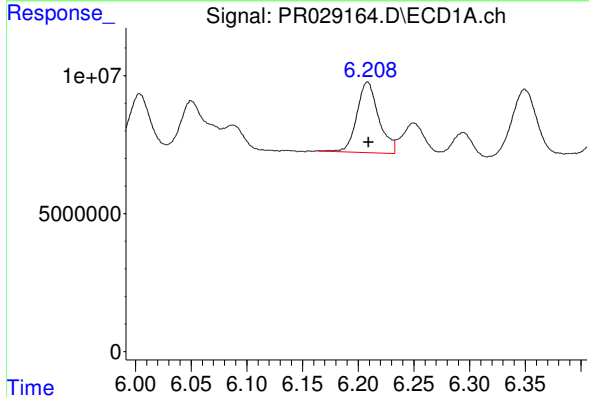
R.T.: 5.915 min  
 Delta R.T.: -0.002 min  
 Response: 33635593  
 Conc: 81.18 ng/ml

Instrument :  
 ECD\_R  
 ClientSampleId :



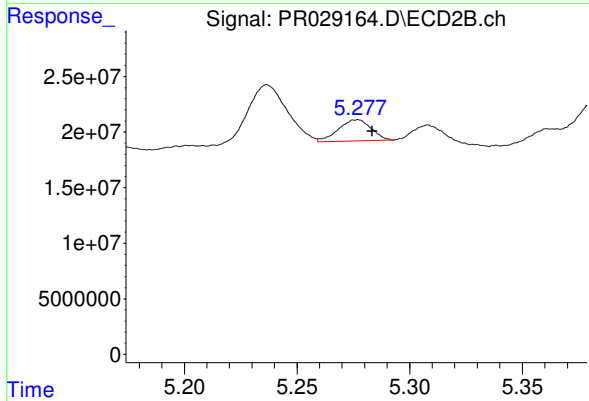
#19 AR-1242-4

R.T.: 5.066 min  
 Delta R.T.: -0.006 min  
 Response: 45119529  
 Conc: 46.34 ng/ml



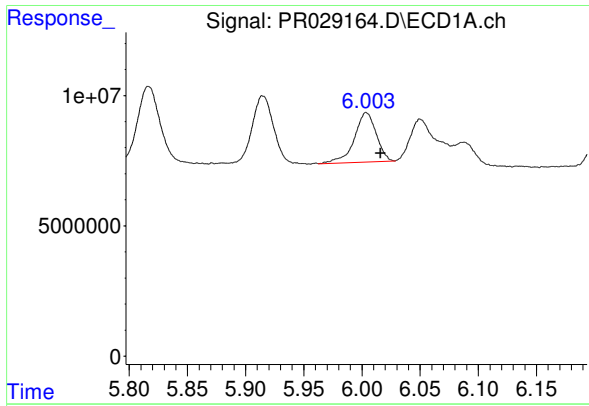
#20 AR-1242-5

R.T.: 6.208 min  
 Delta R.T.: 0.000 min  
 Response: 34883307  
 Conc: 86.38 ng/ml



#20 AR-1242-5

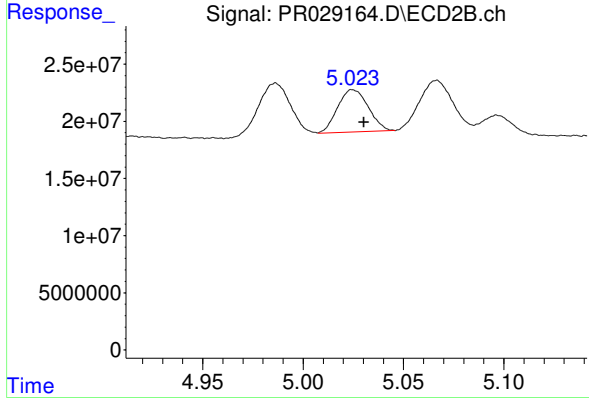
R.T.: 5.277 min  
 Delta R.T.: -0.007 min  
 Response: 19293080  
 Conc: 43.73 ng/ml



#21 AR-1248-1

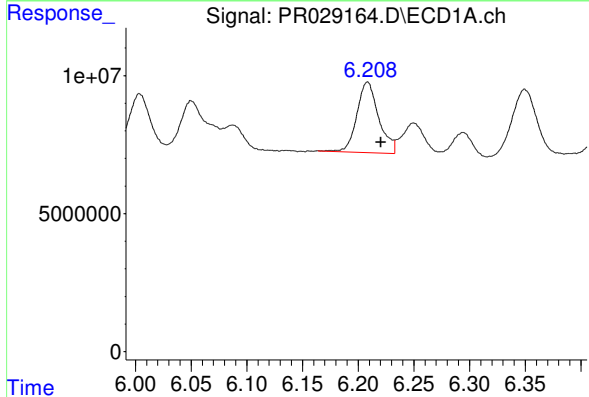
R.T.: 6.004 min  
 Delta R.T.: -0.012 min  
 Response: 24973712  
 Conc: 40.81 ng/ml

Instrument :  
 ECD\_R  
 ClientSampleId :



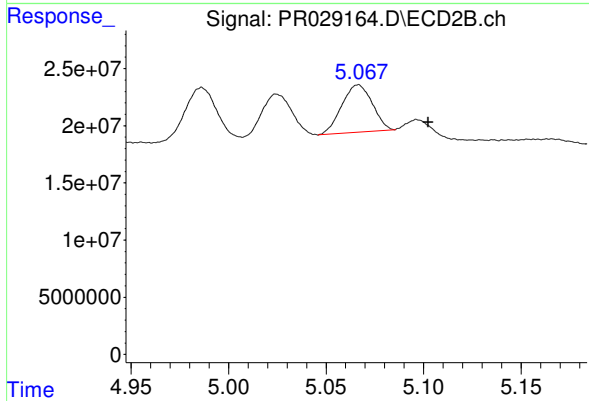
#21 AR-1248-1

R.T.: 5.025 min  
 Delta R.T.: -0.005 min  
 Response: 39503304  
 Conc: 27.02 ng/ml



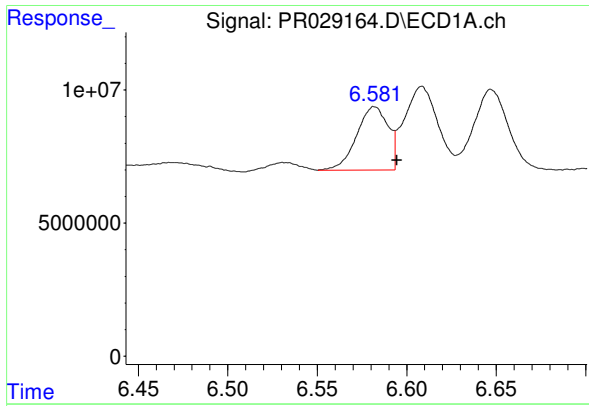
#22 AR-1248-2

R.T.: 6.208 min  
 Delta R.T.: -0.012 min  
 Response: 34883307  
 Conc: 51.32 ng/ml



#22 AR-1248-2

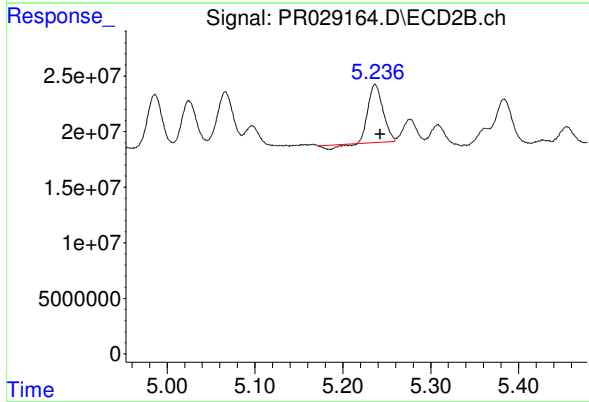
R.T.: 5.066 min  
 Delta R.T.: -0.036 min  
 Response: 45119529  
 Conc: 79.78 ng/ml



#23 AR-1248-3

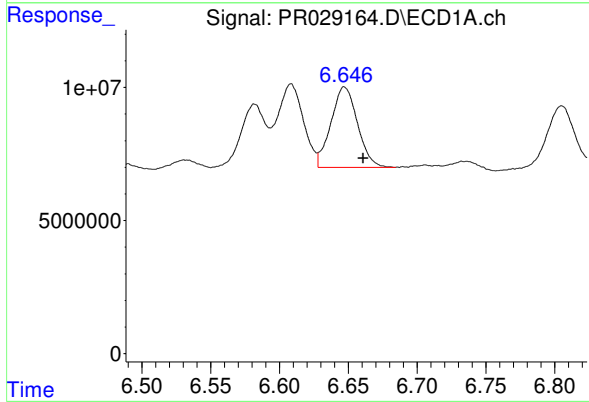
R.T.: 6.582 min  
 Delta R.T.: -0.013 min  
 Response: 29133252  
 Conc: 50.49 ng/ml

Instrument :  
 ECD\_R  
 ClientSampleId :



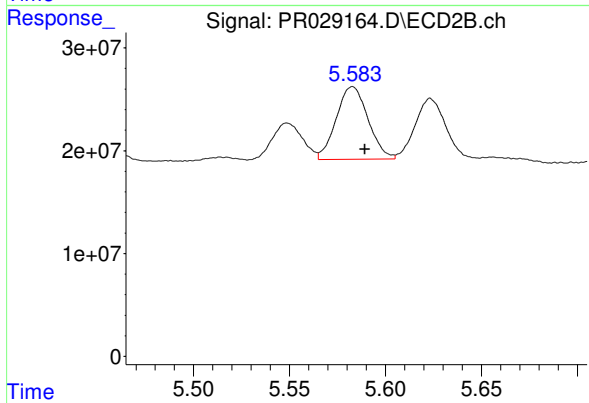
#23 AR-1248-3

R.T.: 5.237 min  
 Delta R.T.: -0.006 min  
 Response: 58848553  
 Conc: 32.94 ng/ml



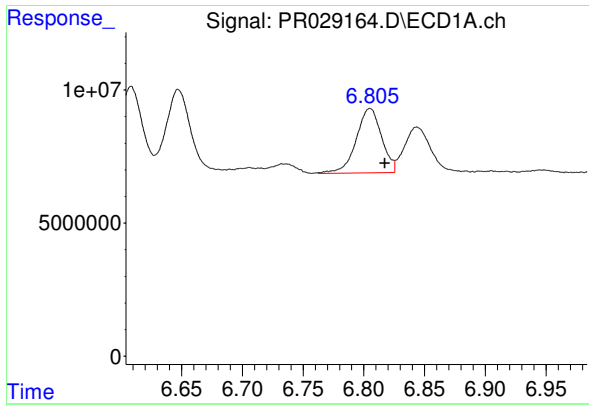
#24 AR-1248-4

R.T.: 6.647 min  
 Delta R.T.: -0.013 min  
 Response: 40742271  
 Conc: 54.32 ng/ml



#24 AR-1248-4

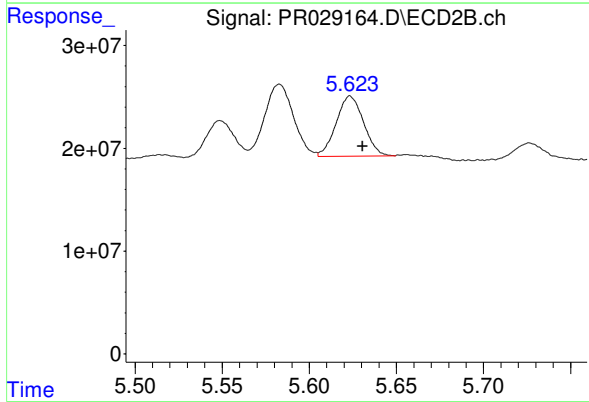
R.T.: 5.583 min  
 Delta R.T.: -0.006 min  
 Response: 81763753  
 Conc: 31.94 ng/ml



#25 AR-1248-5

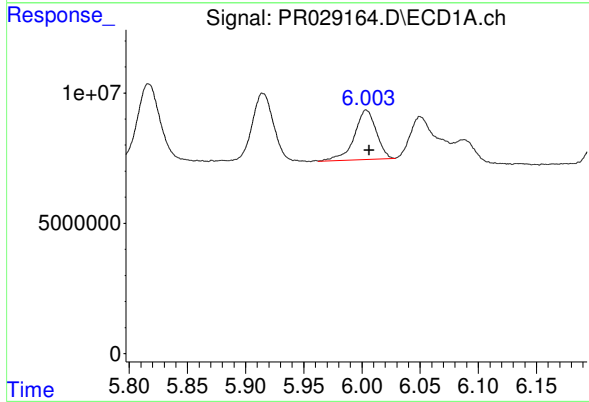
R.T.: 6.805 min  
 Delta R.T.: -0.012 min  
 Response: 35086593  
 Conc: 45.90 ng/ml

Instrument :  
 ECD\_R  
 ClientSampleId :



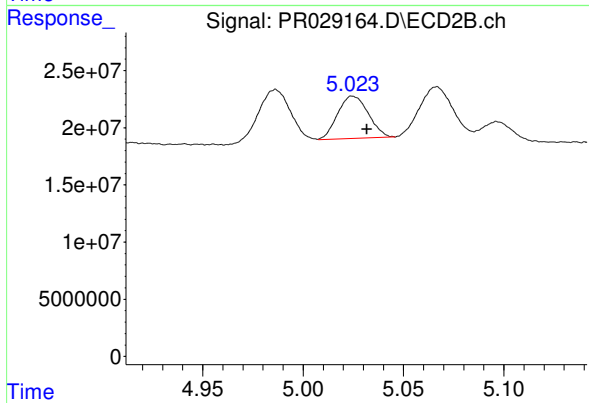
#25 AR-1248-5

R.T.: 5.623 min  
 Delta R.T.: -0.007 min  
 Response: 63919036  
 Conc: 35.71 ng/ml



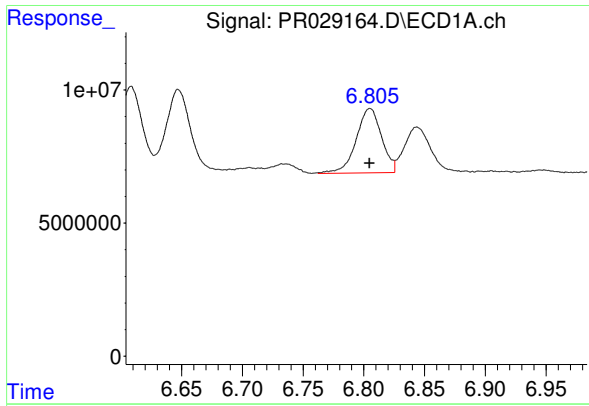
#26 AR-1254-1

R.T.: 6.004 min  
 Delta R.T.: -0.002 min  
 Response: 24973712  
 Conc: 58.30 ng/ml



#26 AR-1254-1

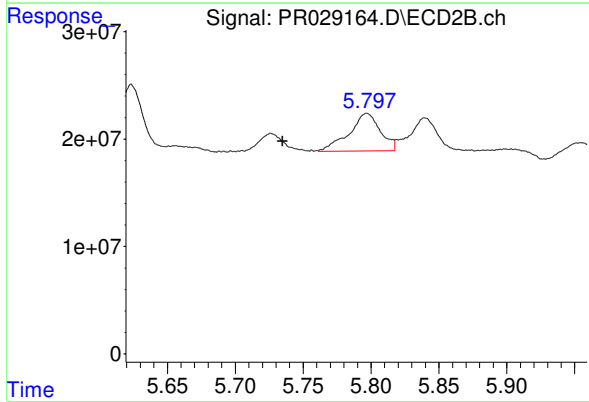
R.T.: 5.025 min  
 Delta R.T.: -0.007 min  
 Response: 39503304  
 Conc: 37.21 ng/ml



#27 AR-1254-2

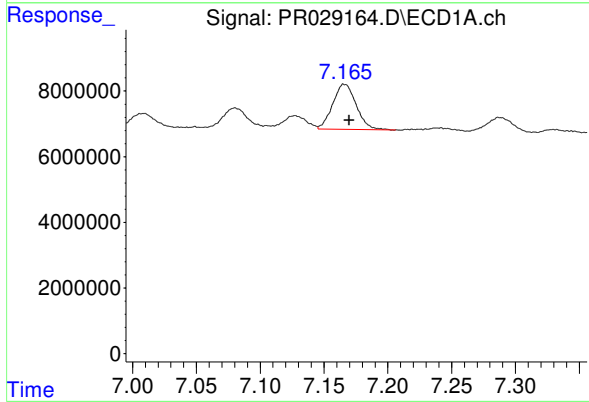
R.T.: 6.805 min  
 Delta R.T.: 0.000 min  
 Response: 35086593  
 Conc: 29.07 ng/ml

Instrument :  
 ECD\_R  
 ClientSampleId :



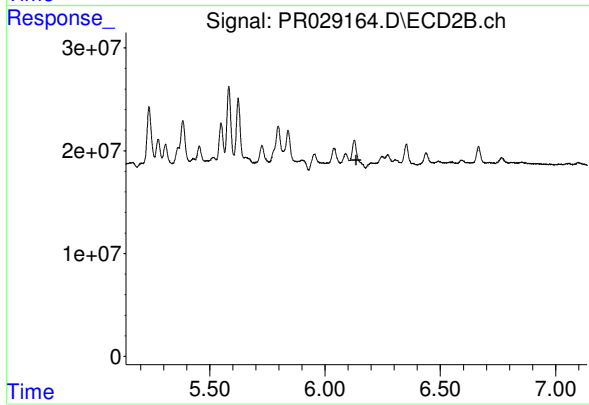
#27 AR-1254-2

R.T.: 5.797 min  
 Delta R.T.: 0.062 min  
 Response: 55893784  
 Conc: 23.31 ng/ml



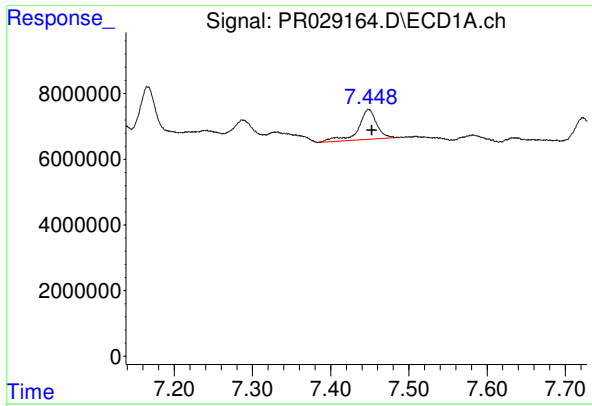
#28 AR-1254-3

R.T.: 7.166 min  
 Delta R.T.: -0.004 min  
 Response: 17750745  
 Conc: 13.21 ng/ml



#28 AR-1254-3

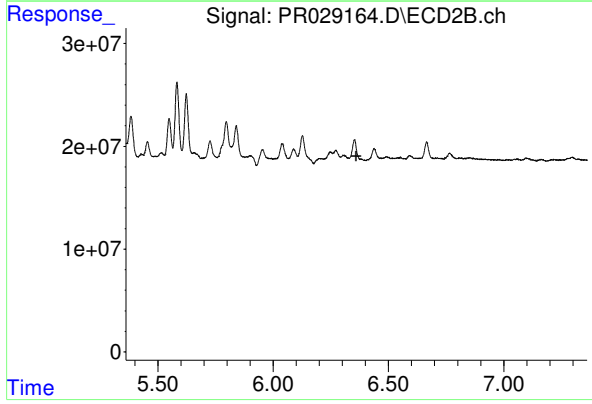
R.T.: 0.000 min  
 Exp R.T. : 6.136 min  
 Response: 0  
 Conc: N.D.



#29 AR-1254-4

R.T.: 7.449 min  
Delta R.T.: -0.004 min  
Response: 14967297  
Conc: 14.97 ng/ml

Instrument :  
ECD\_R  
ClientSampleId :



#29 AR-1254-4

R.T.: 0.000 min  
Exp R.T. : 6.361 min  
Response: 0  
Conc: N.D.