

Data Path : Z:\pestpcbsrv\HPCHEM1\ECD\_R\Data\PR062218\  
 Data File : PR029139.D  
 Signal(s) : Signal #1: ECD1A.ch Signal #2: ECD2B.ch  
 Acq On : 15 Jun 2018 11:55  
 Operator : UA/SM  
 Sample : J3496-06  
 Misc :  
 ALS Vial : 120 Sample Multiplier: 1

**Instrument :**  
 ECD\_R  
**ClientSampleId :**  
 SOUTH-ELEVATION-LEVEL5-PIPE

**Manual Integrations**  
**APPROVED**

UGO  
 6/15/2018 5:13:29 PM

Integration File signal 1: autoint1.e  
 Integration File signal 2: autoint2.e  
 Quant Time: Jun 15 12:08:44 2018  
 Quant Method : \\TERASTORAGE\Terastorage\pestpcbsrv\HPCHEM1\ECD\_R\Method\PR061018.M  
 Quant Title : GC EXTRACTABLES  
 QLast Update : Wed Jun 06 14:28:54 2018  
 Response via : Initial Calibration  
 Integrator: ChemStation

Volume Inj. : 2 µl  
 Signal #1 Phase : ZB-MR1 Signal #2 Phase: ZB-MR2  
 Signal #1 Info : 30Mx0.32mmx 0.50µ Signal #2 Info : 30M x 0.32mm x 0.25µm

| Compound                    | RT#1   | RT#2  | Resp#1  | Resp#2   | ng/ml  | ng/ml    |
|-----------------------------|--------|-------|---------|----------|--------|----------|
| -----                       |        |       |         |          |        |          |
| System Monitoring Compounds |        |       |         |          |        |          |
| 1) SA Tetrachlo...          | 4.574  | 3.721 | 293.5E6 | 623.7E6  | 11.893 | 12.791   |
| 2) SA Decachlor...          | 10.350 | 8.668 | 561.7E6 | 1015.9E6 | 26.415 | 17.817m# |

Target Compounds

(f)=RT Delta > 1/2 Window (#)=Amounts differ by > 25% (m)=manual int.

Data Path : Z:\pestpcbsrv\HPCHEM1\ECD\_R\Data\PR062218\  
 Data File : PR029139.D  
 Signal(s) : Signal #1: ECD1A.ch Signal #2: ECD2B.ch  
 Acq On : 15 Jun 2018 11:55  
 Operator : UA/SM  
 Sample : J3496-06  
 Misc :  
 ALS Vial : 120 Sample Multiplier: 1

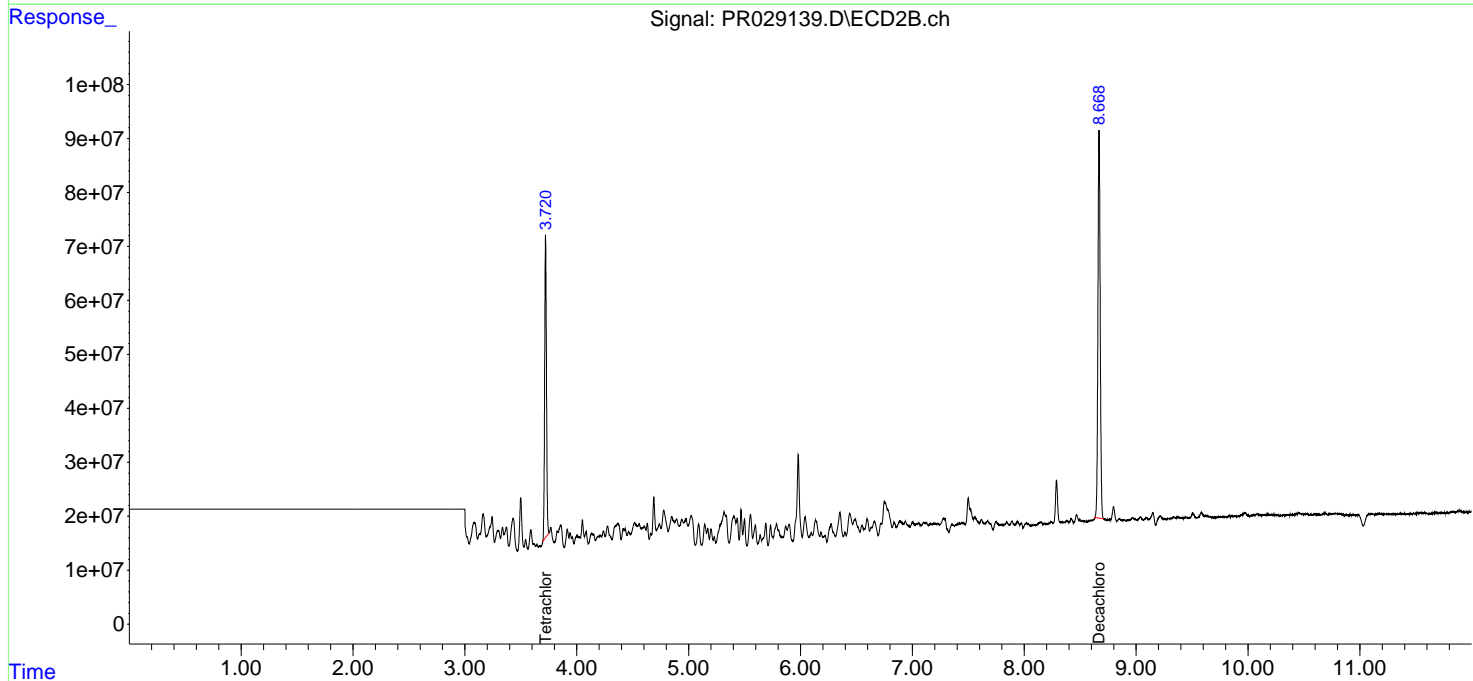
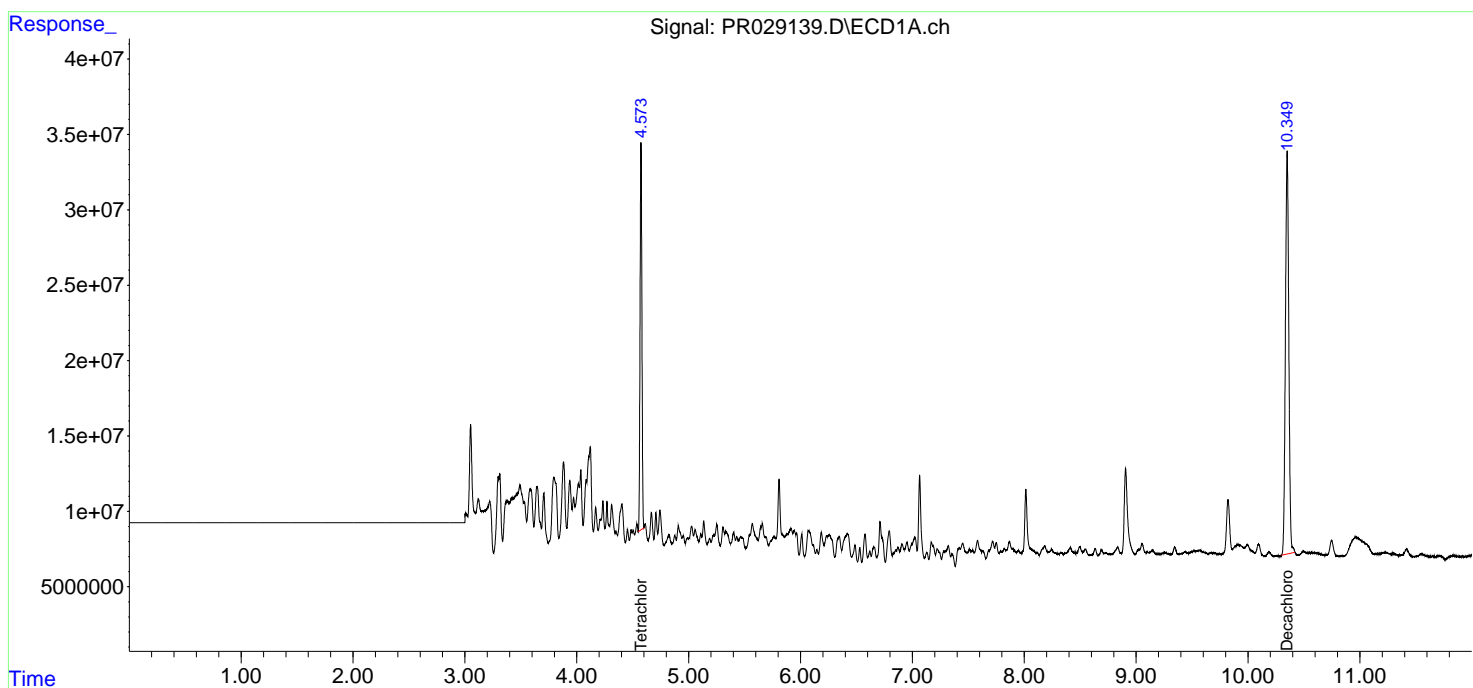
**Instrument :**  
 ECD\_R  
**Client Sampled :**  
 SOUTH-ELEVATION-LEVEL5-PIPE

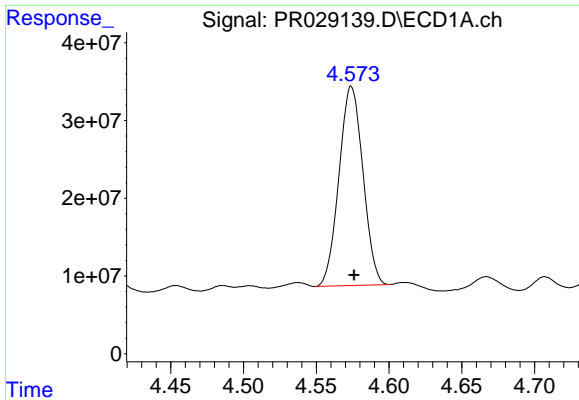
**Manual Integrations**  
**APPROVED**

UGO  
 6/15/2018 5:13:29 PM

Integration File signal 1: autoint1.e  
 Integration File signal 2: autoint2.e  
 Quant Time: Jun 15 12:08:44 2018  
 Quant Method : \\TERASTORAGE\Terastorage\pestpcbsrv\HPCHEM1\ECD\_R\Method\PR061018.M  
 Quant Title : GC EXTRACTABLES  
 QLast Update : Wed Jun 06 14:28:54 2018  
 Response via : Initial Calibration  
 Integrator: ChemStation

Volume Inj. : 2 µl  
 Signal #1 Phase : ZB-MR1 Signal #2 Phase: ZB-MR2  
 Signal #1 Info : 30Mx0.32mmx 0.50µ Signal #2 Info : 30M x 0.32mm x 0.25µm





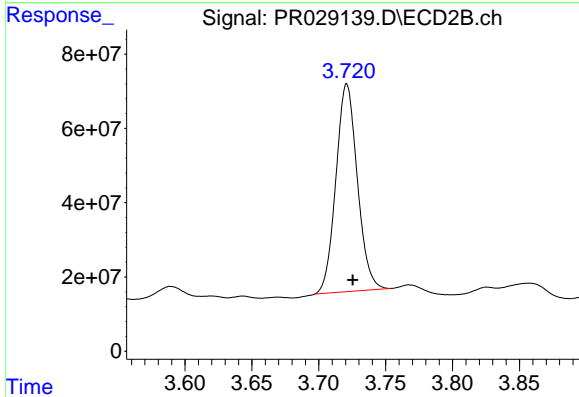
#1 Tetrachloro-m-xylene

R.T.: 4.574 min  
 Delta R.T.: -0.002 min  
 Response: 293521551  
 Conc: 11.89 ng/ml

Instrument :  
 ECD\_R  
 ClientSampled :  
 SOUTH-ELEVATION-LEVEL5-PIPE(

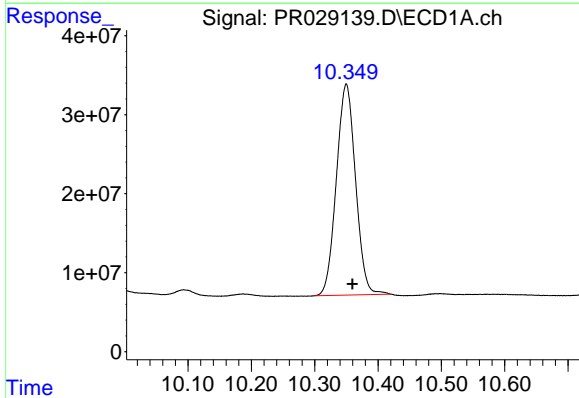
Manual Integrations  
 APPROVED

UGO  
 6/15/2018 5:13:29 PM



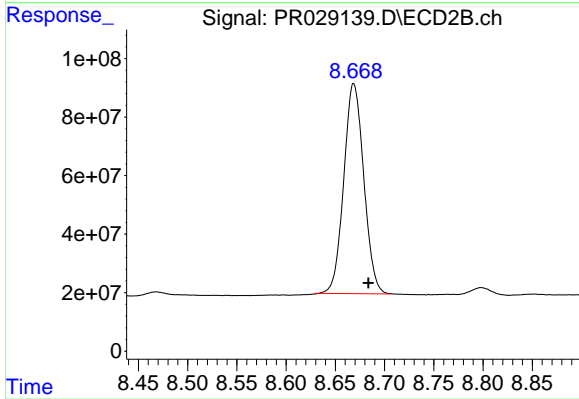
#1 Tetrachloro-m-xylene

R.T.: 3.721 min  
 Delta R.T.: -0.004 min  
 Response: 623699388  
 Conc: 12.79 ng/ml



#2 Decachlorobiphenyl

R.T.: 10.350 min  
 Delta R.T.: -0.009 min  
 Response: 561726155  
 Conc: 26.42 ng/ml



#2 Decachlorobiphenyl

R.T.: 8.668 min  
 Delta R.T.: -0.015 min  
 Response: 1015882376  
 Conc: 17.82 ng/ml m