

Data Path : Z:\pestpcbsrv\HPCHEM1\ECD\_R\Data\PR062420\  
 Data File : PR045971.D  
 Signal(s) : Signal #1: ECD1A.ch Signal #2: ECD2B.ch  
 Acq On : 23 Jun 2020 11:07  
 Operator : AJ\MA  
 Sample : L3064-09  
 Misc :  
 ALS Vial : 17 Sample Multiplier: 1

Instrument :  
 ECD\_R  
 ClientSampled :

Integration File signal 1: autoint1.e  
 Integration File signal 2: autoint2.e  
 Quant Time: Jun 23 16:30:17 2020  
 Quant Method : Z:\pestpcbsrv\HPCHEM1\ECD\_R\Method\PR062320CLP.M  
 Quant Title : GC EXTRACTABLES  
 QLast Update : Tue Jun 23 06:21:10 2020  
 Response via : Initial Calibration  
 Integrator: ChemStation

Volume Inj. : 1 µl  
 Signal #1 Phase : ZB MR1 Signal #2 Phase: ZB MR2  
 Signal #1 Info : 30Mx0.32mmx 0.5µm Signal #2 Info : 30M x 0.32mm x 0.25µm

Compound	RT#1	RT#2	Resp#1	Resp#2	ng/ml	ng/ml
-----						
System Monitoring Compounds						
1) SA Tetrachlo...	4.767	3.989	27419582	208.0E6	16.173	18.101
2) SA Decachlor...	10.780	9.123	38648670	266.7E6	29.355	26.743
Target Compounds						
3) L1 AR-1016-1	0.000	5.086	0	312540	N.D.	0.727 #
4) L1 AR-1016-2	0.000	5.086	0	312540	N.D.	0.623 #
5) L1 AR-1016-3	0.000	5.285	0	551166	N.D.	2.212 #
6) L1 AR-1016-4	0.000	5.285f	0	551166	N.D.	2.587 #
8) L2 AR-1221-1	0.000	4.204	0	832912	N.D.	6.150 #
9) L2 AR-1221-2	5.082	4.295	720170	3330599	55.055	32.093 #
10) L2 AR-1221-3	5.082f	4.371	720170	480008	15.933	1.461 #
11) L3 AR-1232-1	5.082f	4.371	720170	480008	20.586	1.956 #
12) L3 AR-1232-2	0.000	5.086	0	312540	N.D.	1.215 #
13) L3 AR-1232-3	0.000	5.285	0	551166	N.D.	4.864 #
16) L4 AR-1242-1	0.000	5.086	0	312540	N.D.	0.896 #
17) L4 AR-1242-2	0.000	5.086	0	312540	N.D.	0.661 #
18) L4 AR-1242-3	0.000	5.285	0	551166	N.D.	2.538 #
20) L4 AR-1242-5	6.850f	0.000	182040	0	5.163	N.D. #
21) L5 AR-1248-1	0.000	5.086	0	312540	N.D.	1.129 #
22) L5 AR-1248-2	6.298f	5.285f	169439	551166	3.441	1.689 #
25) L5 AR-1248-5	6.850f	0.000	182040	0	3.090	N.D. #
26) L6 AR-1254-1	6.850	0.000	182040	0	2.878	N.D. #
27) L6 AR-1254-2	0.000	6.084	0	337.7E6	N.D.	567.440 #
28) L6 AR-1254-3	7.475f	6.455	445573	29154650	4.206	29.563 #
29) L6 AR-1254-4	7.676	6.710	194699	9878934	2.429	15.522 #
30) L6 AR-1254-5	8.156	0.000	29166904	0	340.558	N.D. #
31) L7 AR-1260-1	7.608f	6.628f	391533	85106588	5.448	152.110 #
32) L7 AR-1260-2	7.896f	6.770	17216004	2532402	198.857	3.729 #
33) L7 AR-1260-3	8.156f	6.967	29166904	55564878	443.307	89.111 #
34) L7 AR-1260-4	8.489f	7.380	26477	327349	0.342	0.619 #
38) L8 AR-1262-3	9.104	7.969f	1372474	45480	16.530	0.069 #
39) L8 AR-1262-4	0.000	7.969	0	45480	N.D.	0.037 #
40) L8 AR-1262-5	0.000	8.475f	0	47693323	N.D.	79.489 #
41) L9 AR-1268-1	9.104	7.969f	1372474	45480	6.146	0.024 #
42) L9 AR-1268-2	0.000	7.969	0	45480	N.D.	0.025 #
43) L9 AR-1268-3	0.000	8.216	0	1043906	N.D.	0.691 #
44) L9 AR-1268-4	0.000	8.475f	0	47693323	N.D.	71.190 #
45) L9 AR-1268-5	10.404	8.839	493687	1354044	0.851	0.280 #

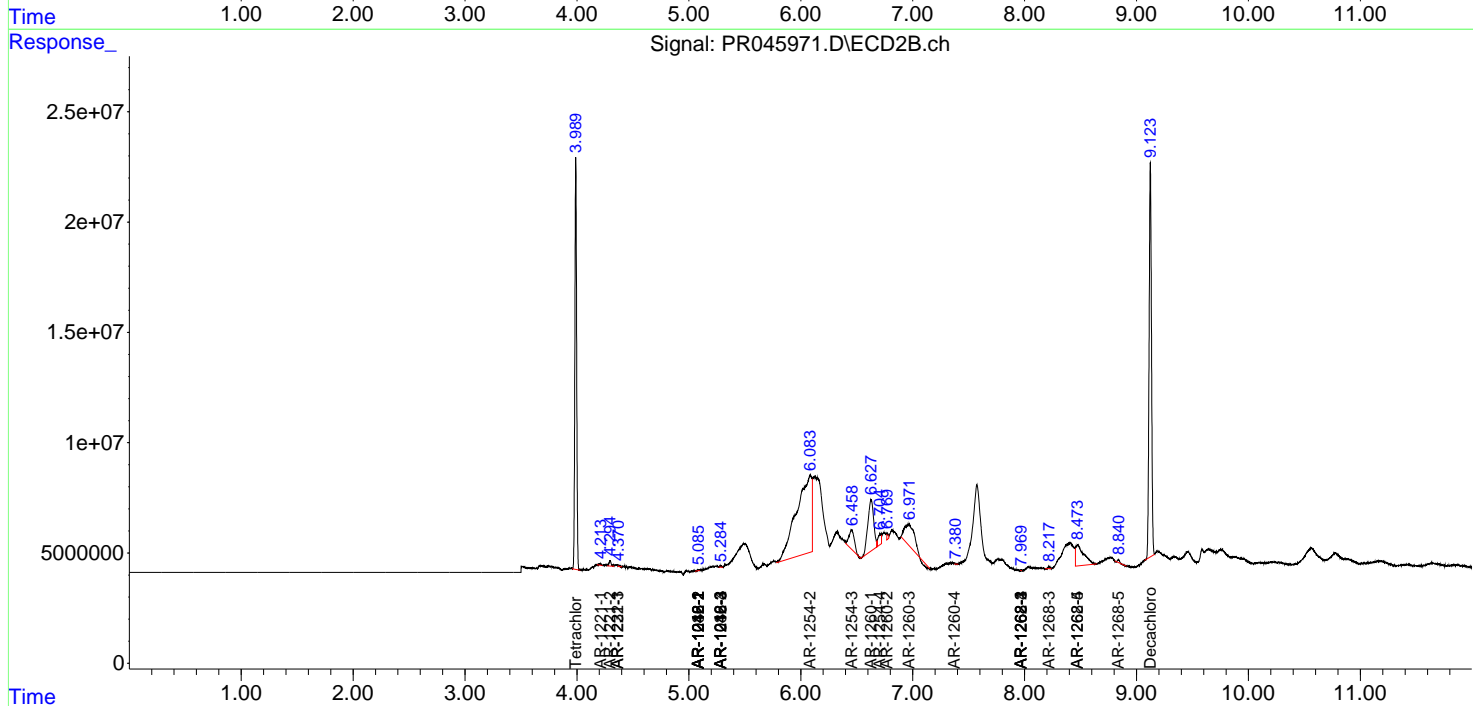
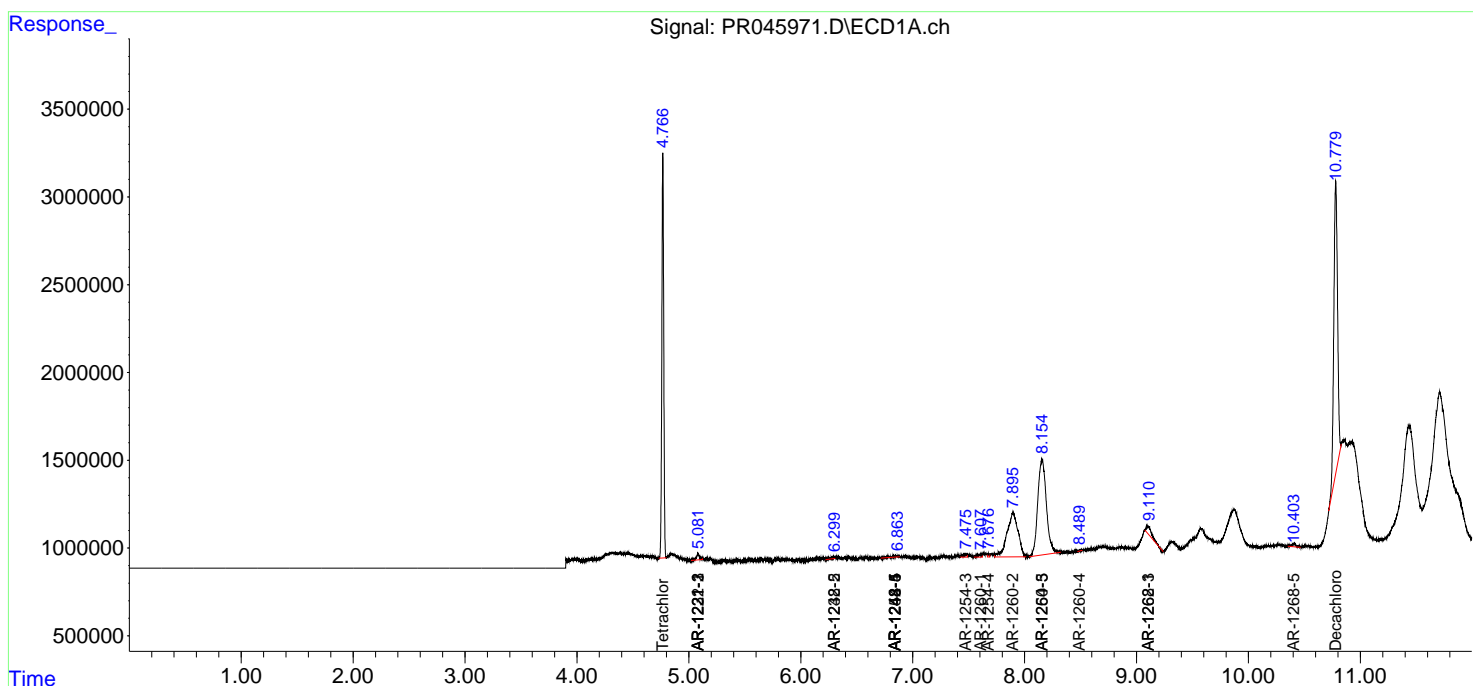
(f)=RT Delta > 1/2 Window (#)=Amounts differ by > 25% (m)=manual int.

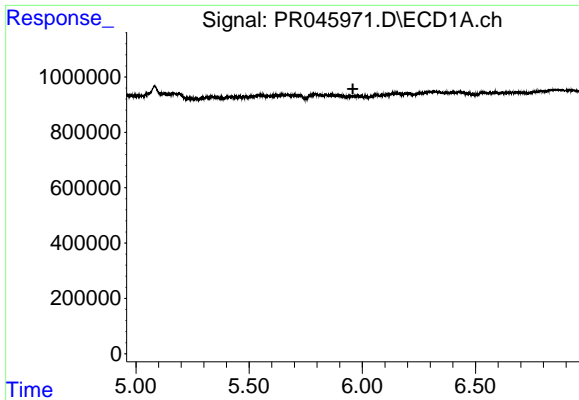
Data Path : Z:\pestpcbsrv\HPCHEM1\ECD\_R\Data\PR062420\  
 Data File : PR045971.D  
 Signal(s) : Signal #1: ECD1A.ch Signal #2: ECD2B.ch  
 Acq On : 23 Jun 2020 11:07  
 Operator : AJ\MA  
 Sample : L3064-09  
 Misc :  
 ALS Vial : 17 Sample Multiplier: 1

Instrument :  
 ECD\_R  
 ClientSampled :

Integration File signal 1: autoint1.e  
 Integration File signal 2: autoint2.e  
 Quant Time: Jun 23 16:30:17 2020  
 Quant Method : Z:\pestpcbsrv\HPCHEM1\ECD\_R\Method\PR062320CLP.M  
 Quant Title : GC EXTRACTABLES  
 QLast Update : Tue Jun 23 06:21:10 2020  
 Response via : Initial Calibration  
 Integrator: ChemStation

Volume Inj. : 1 µl  
 Signal #1 Phase : ZB MR1 Signal #2 Phase: ZB MR2  
 Signal #1 Info : 30Mx0.32mmx 0.5µm Signal #2 Info : 30M x 0.32mm x 0.25µm

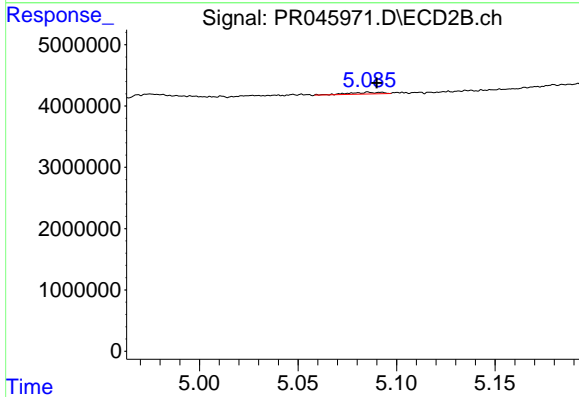




#3 AR-1016-1

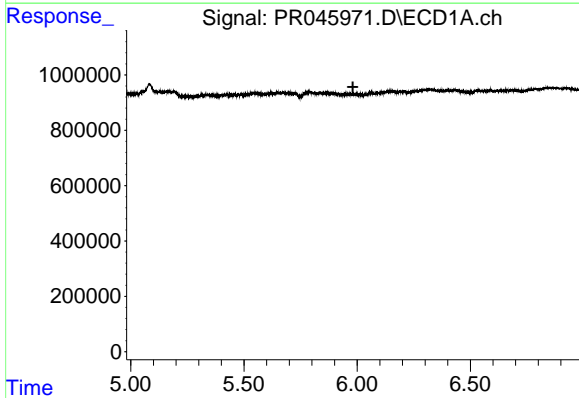
R.T.: 0.000 min  
 Exp R.T. : 5.958 min  
 Response: 0  
 Conc: N.D.

Instrument :  
 ECD\_R  
 ClientSampleId :



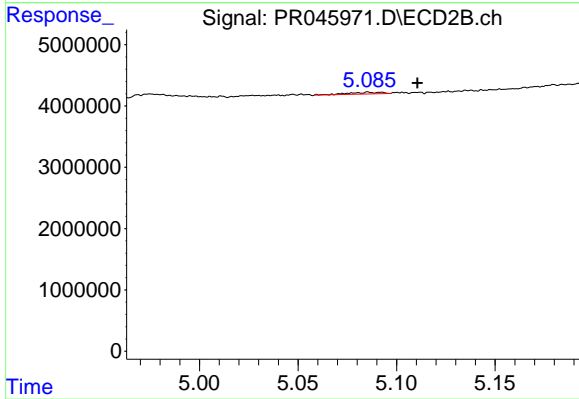
#3 AR-1016-1

R.T.: 5.086 min  
 Delta R.T.: -0.004 min  
 Response: 312540  
 Conc: 0.73 ng/ml



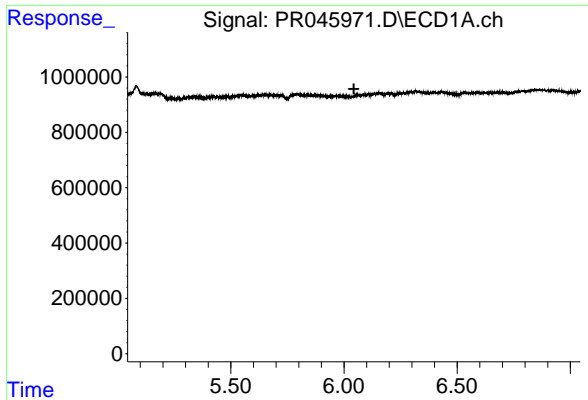
#4 AR-1016-2

R.T.: 0.000 min  
 Exp R.T. : 5.981 min  
 Response: 0  
 Conc: N.D.



#4 AR-1016-2

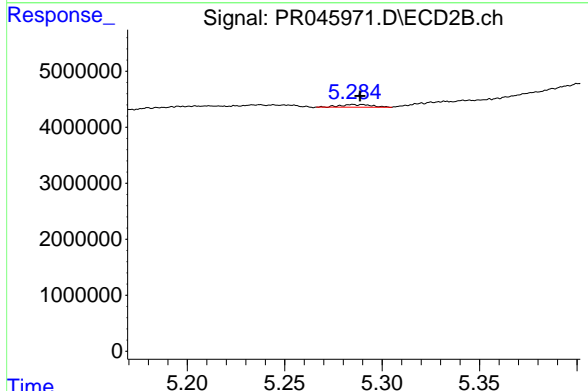
R.T.: 5.086 min  
 Delta R.T.: -0.025 min  
 Response: 312540  
 Conc: 0.62 ng/ml



#5 AR-1016-3

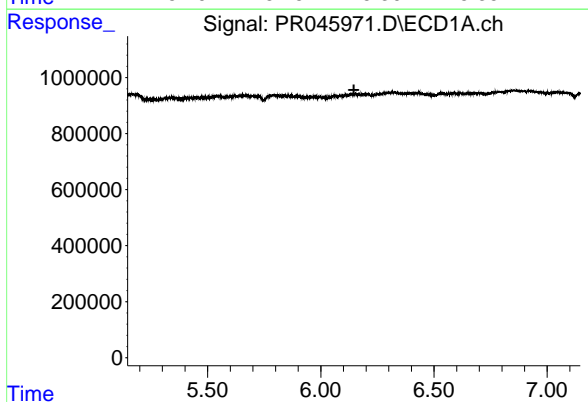
R.T.: 0.000 min  
 Exp R.T. : 6.044 min  
 Response: 0  
 Conc: N.D.

Instrument :  
 ECD\_R  
 ClientSampleId :



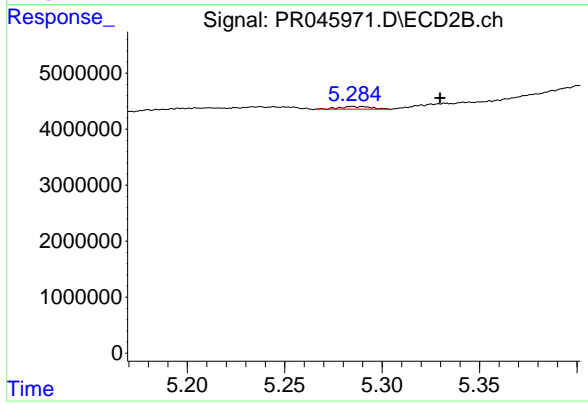
#5 AR-1016-3

R.T.: 5.285 min  
 Delta R.T.: -0.004 min  
 Response: 551166  
 Conc: 2.21 ng/ml



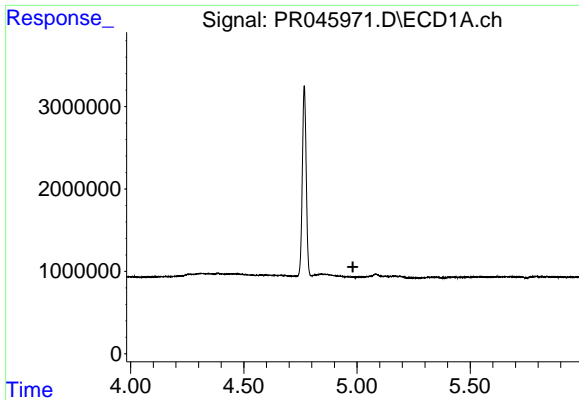
#6 AR-1016-4

R.T.: 0.000 min  
 Exp R.T. : 6.146 min  
 Response: 0  
 Conc: N.D.



#6 AR-1016-4

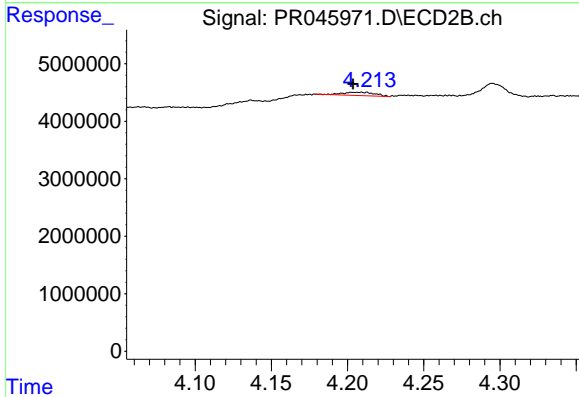
R.T.: 5.285 min  
 Delta R.T.: -0.045 min  
 Response: 551166  
 Conc: 2.59 ng/ml



#8 AR-1221-1

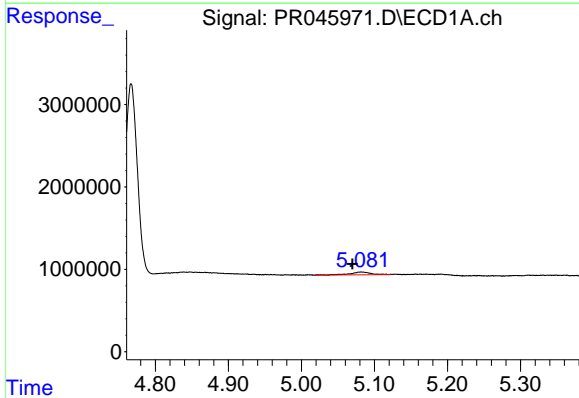
R.T.: 0.000 min  
 Exp R.T.: 4.982 min  
 Response: 0  
 Conc: N.D.

Instrument :  
 ECD\_R  
 ClientSampled :



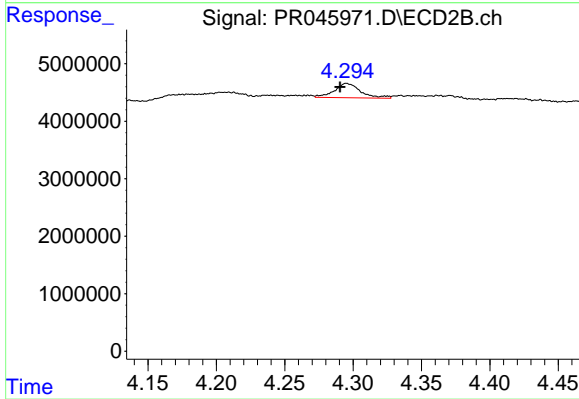
#8 AR-1221-1

R.T.: 4.204 min  
 Delta R.T.: 0.000 min  
 Response: 832912  
 Conc: 6.15 ng/ml



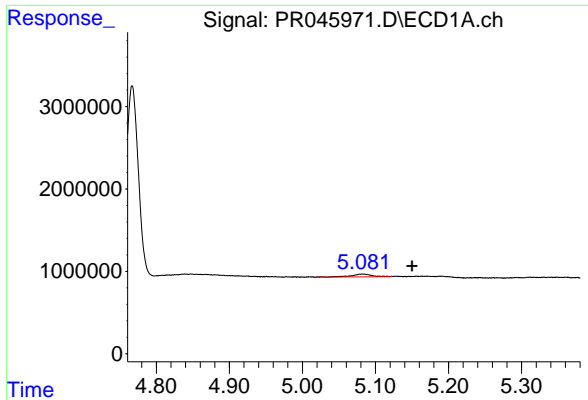
#9 AR-1221-2

R.T.: 5.082 min  
 Delta R.T.: 0.012 min  
 Response: 720170  
 Conc: 55.06 ng/ml



#9 AR-1221-2

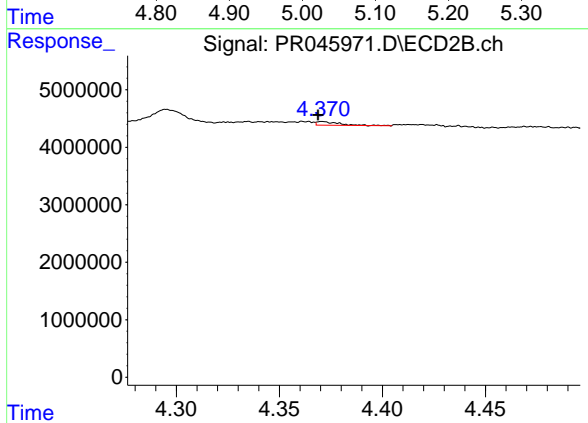
R.T.: 4.295 min  
 Delta R.T.: 0.005 min  
 Response: 3330599  
 Conc: 32.09 ng/ml



#10 AR-1221-3

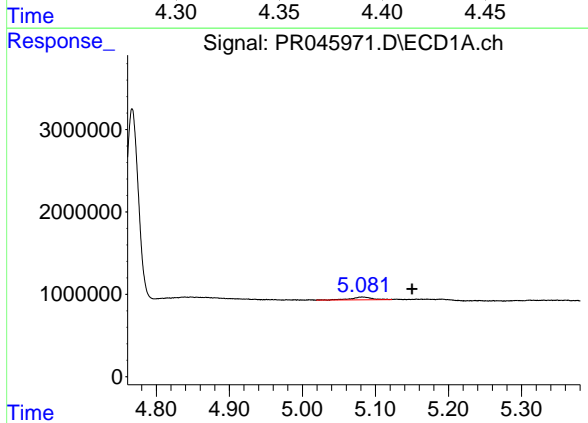
R.T.: 5.082 min  
 Delta R.T.: -0.068 min  
 Response: 720170  
 Conc: 15.93 ng/ml

Instrument :  
 ECD\_R  
 ClientSampleId :



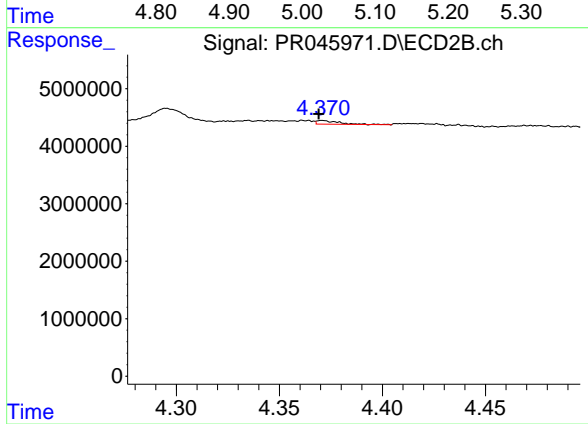
#10 AR-1221-3

R.T.: 4.371 min  
 Delta R.T.: 0.002 min  
 Response: 480008  
 Conc: 1.46 ng/ml



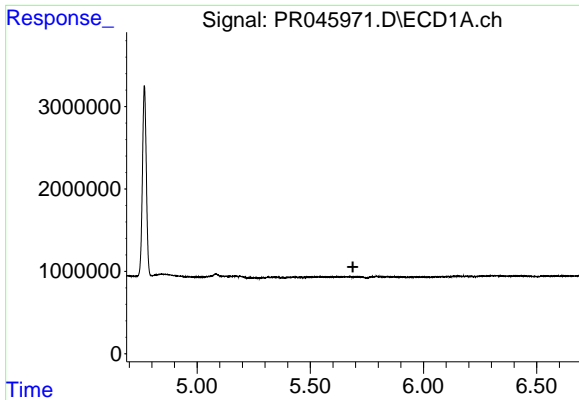
#11 AR-1232-1

R.T.: 5.082 min  
 Delta R.T.: -0.068 min  
 Response: 720170  
 Conc: 20.59 ng/ml



#11 AR-1232-1

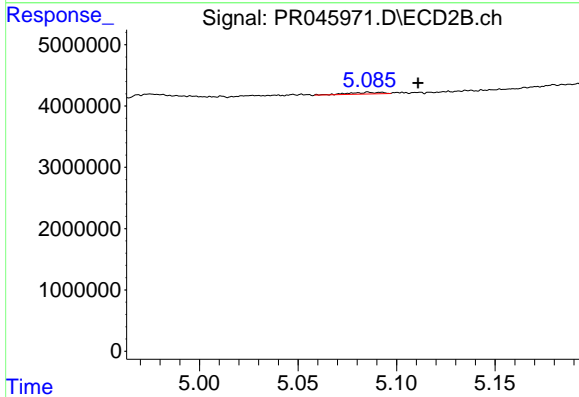
R.T.: 4.371 min  
 Delta R.T.: 0.002 min  
 Response: 480008  
 Conc: 1.96 ng/ml



#12 AR-1232-2

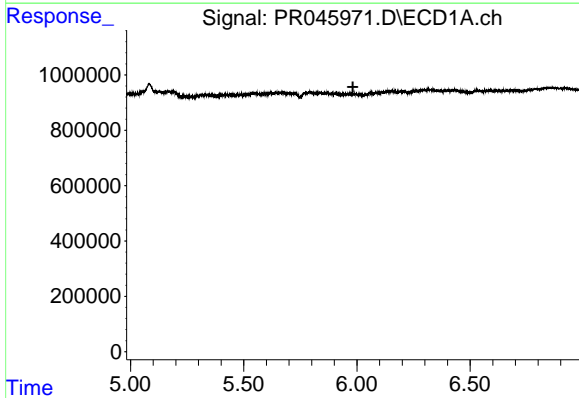
R.T.: 0.000 min  
 Exp R.T. : 5.688 min  
 Response: 0  
 Conc: N.D.

Instrument :  
 ECD\_R  
 ClientSampleId :



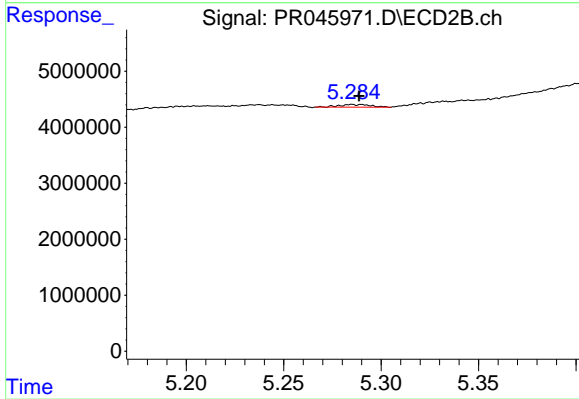
#12 AR-1232-2

R.T.: 5.086 min  
 Delta R.T.: -0.025 min  
 Response: 312540  
 Conc: 1.22 ng/ml



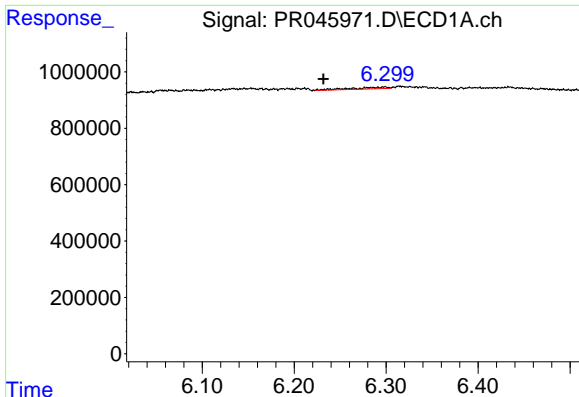
#13 AR-1232-3

R.T.: 0.000 min  
 Exp R.T. : 5.982 min  
 Response: 0  
 Conc: N.D.



#13 AR-1232-3

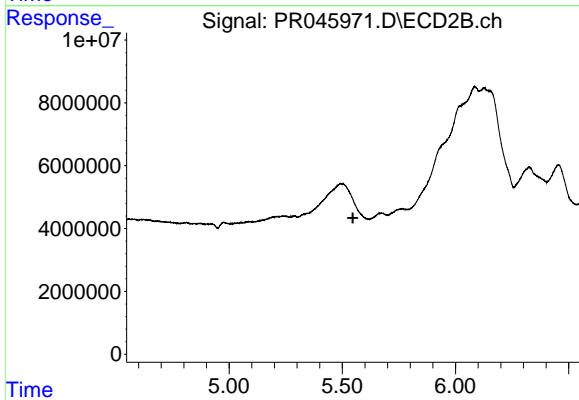
R.T.: 5.285 min  
 Delta R.T.: -0.004 min  
 Response: 551166  
 Conc: 4.86 ng/ml



#15 AR-1232-5

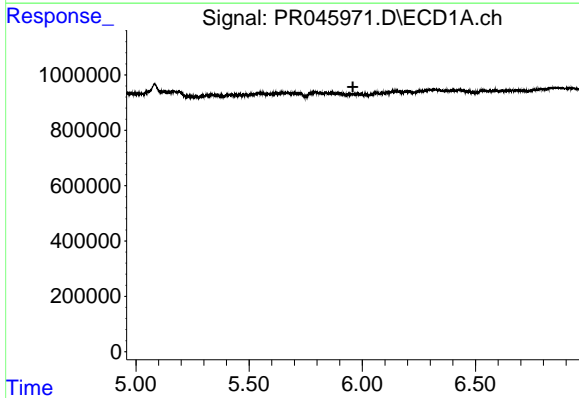
R.T.: 6.298 min  
 Delta R.T.: 0.067 min  
 Response: 169439  
 Conc: 12.42 ng/ml

Instrument :  
 ECD\_R  
 ClientSampleId :



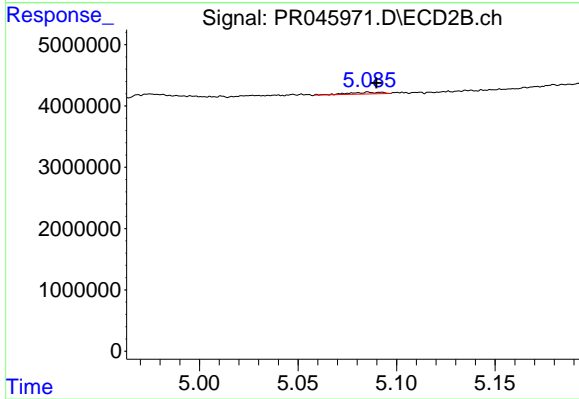
#15 AR-1232-5

R.T.: 5.493 min  
 Delta R.T.: -0.054 min  
 Response: -2165831  
 Conc: N.D.



#16 AR-1242-1

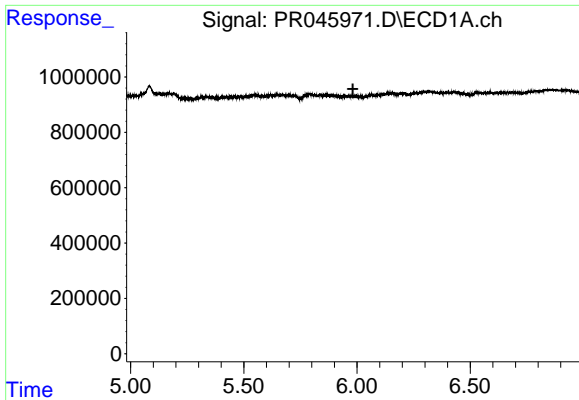
R.T.: 0.000 min  
 Exp R.T. : 5.958 min  
 Response: 0  
 Conc: N.D.



#16 AR-1242-1

R.T.: 5.086 min  
 Delta R.T.: -0.004 min  
 Response: 312540  
 Conc: 0.90 ng/ml

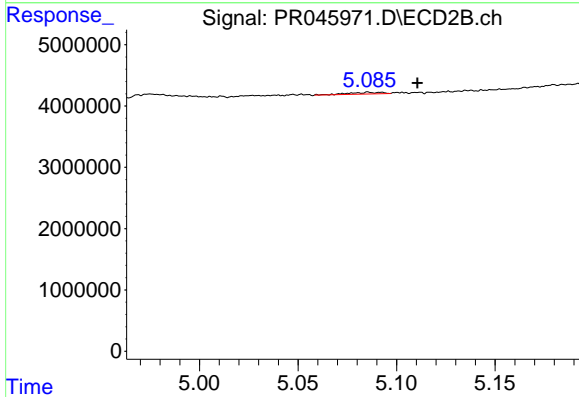




#17 AR-1242-2

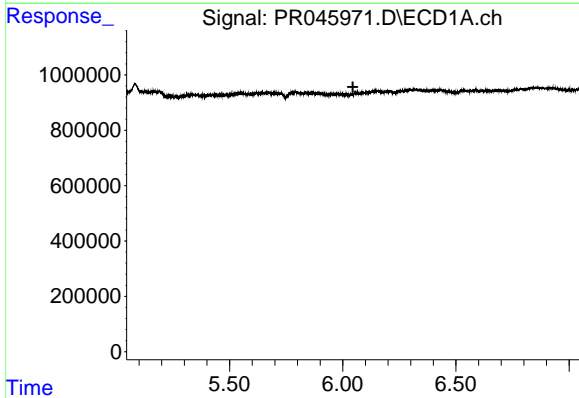
R.T.: 0.000 min  
 Exp R.T.: 5.982 min  
 Response: 0  
 Conc: N.D.

Instrument :  
 ECD\_R  
 ClientSampleId :



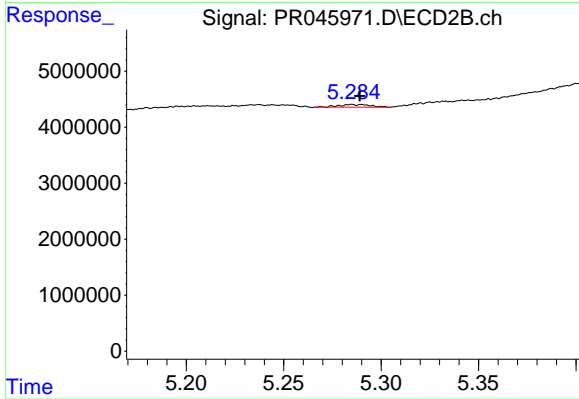
#17 AR-1242-2

R.T.: 5.086 min  
 Delta R.T.: -0.025 min  
 Response: 312540  
 Conc: 0.66 ng/ml



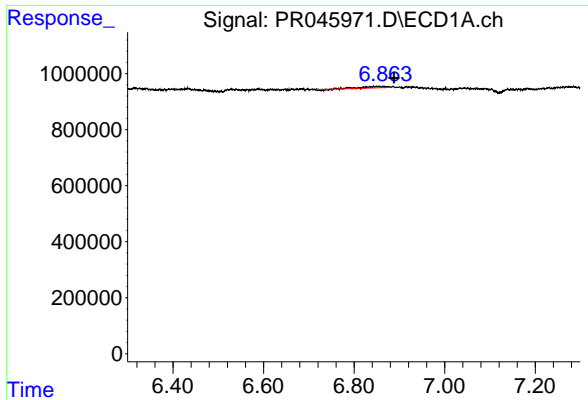
#18 AR-1242-3

R.T.: 0.000 min  
 Exp R.T.: 6.045 min  
 Response: 0  
 Conc: N.D.



#18 AR-1242-3

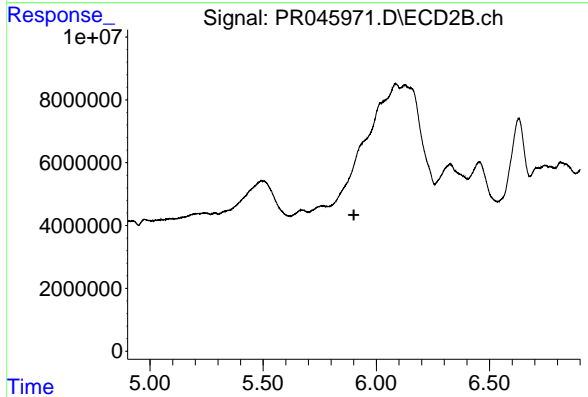
R.T.: 5.285 min  
 Delta R.T.: -0.004 min  
 Response: 551166  
 Conc: 2.54 ng/ml



#20 AR-1242-5

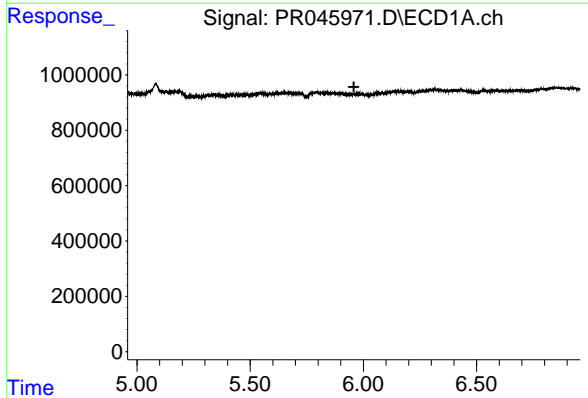
R.T.: 6.850 min  
 Delta R.T.: -0.038 min  
 Response: 182040  
 Conc: 5.16 ng/ml

Instrument :  
 ECD\_R  
 ClientSampleId :



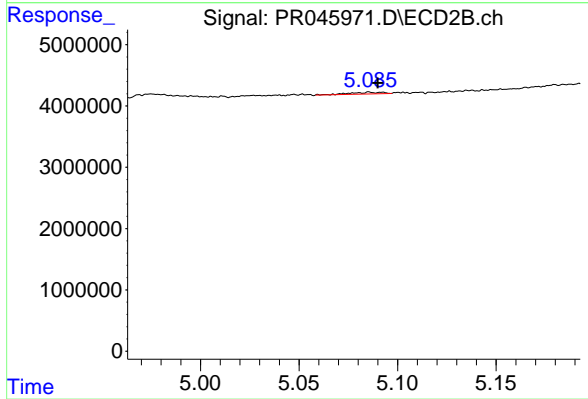
#20 AR-1242-5

R.T.: 0.000 min  
 Exp R.T. : 5.901 min  
 Response: 0  
 Conc: N.D.



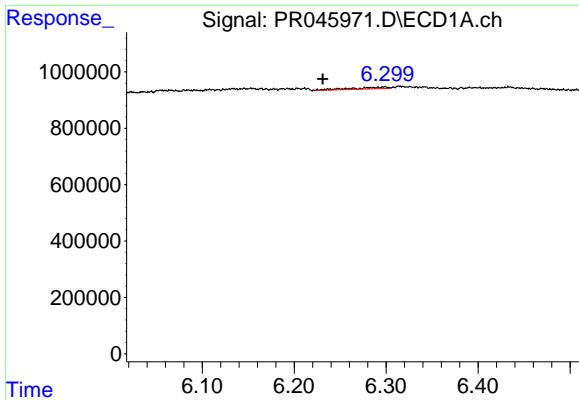
#21 AR-1248-1

R.T.: 0.000 min  
 Exp R.T. : 5.958 min  
 Response: 0  
 Conc: N.D.



#21 AR-1248-1

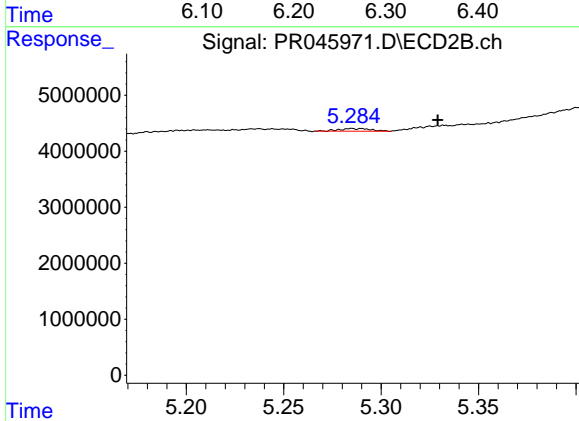
R.T.: 5.086 min  
 Delta R.T.: -0.004 min  
 Response: 312540  
 Conc: 1.13 ng/ml



#22 AR-1248-2

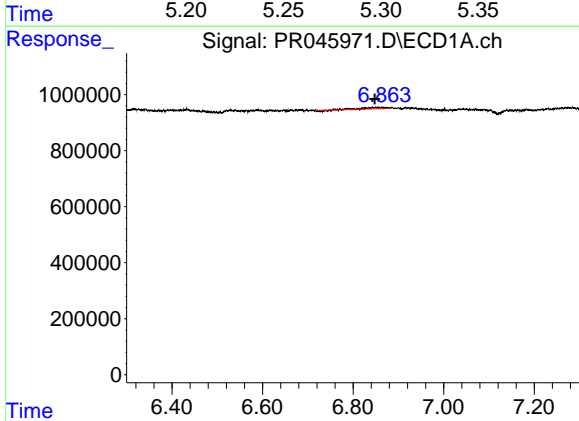
R.T.: 6.298 min  
 Delta R.T.: 0.067 min  
 Response: 169439  
 Conc: 3.44 ng/ml

Instrument :  
 ECD\_R  
 ClientSampleId :



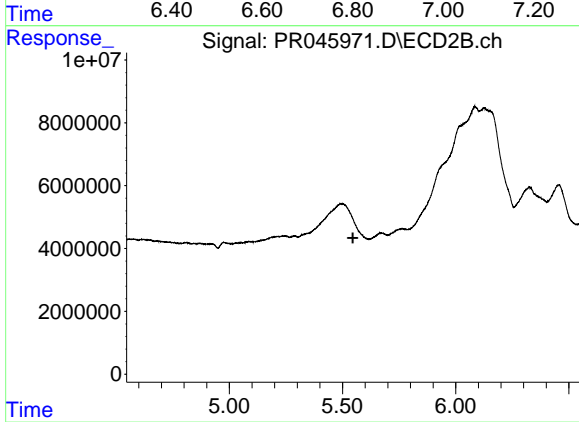
#22 AR-1248-2

R.T.: 5.285 min  
 Delta R.T.: -0.044 min  
 Response: 551166  
 Conc: 1.69 ng/ml



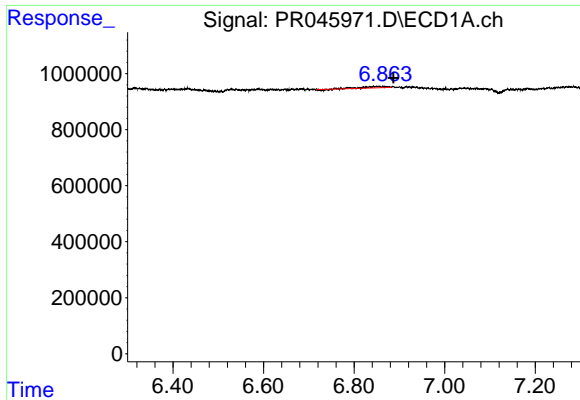
#24 AR-1248-4

R.T.: 6.850 min  
 Delta R.T.: 0.003 min  
 Response: 182040  
 Conc: 2.93 ng/ml



#24 AR-1248-4

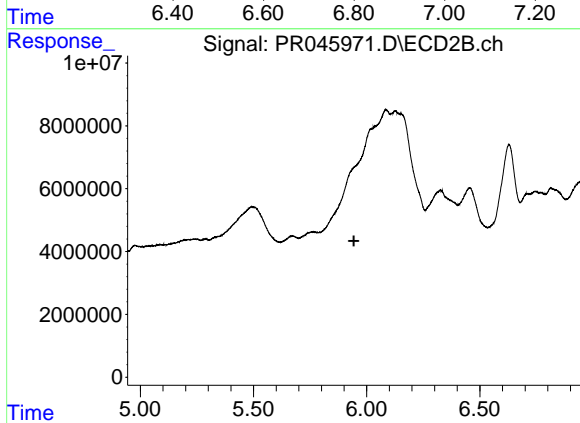
R.T.: 5.493 min  
 Delta R.T.: -0.053 min  
 Response: -2165831  
 Conc: N.D.



#25 AR-1248-5

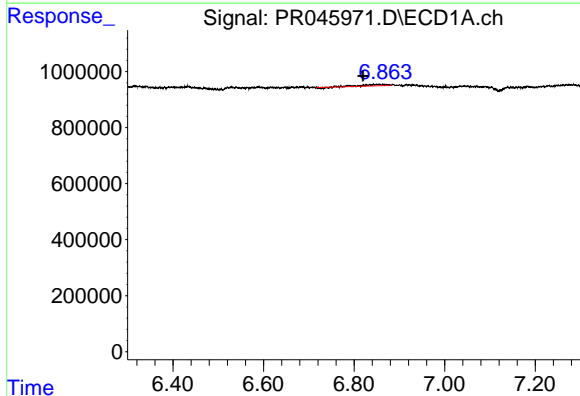
R.T.: 6.850 min  
 Delta R.T.: -0.037 min  
 Response: 182040  
 Conc: 3.09 ng/ml

Instrument :  
 ECD\_R  
 ClientSampleId :



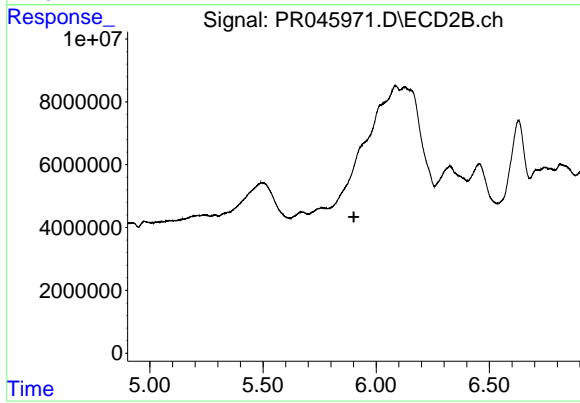
#25 AR-1248-5

R.T.: 0.000 min  
 Exp R.T. : 5.943 min  
 Response: 0  
 Conc: N.D.



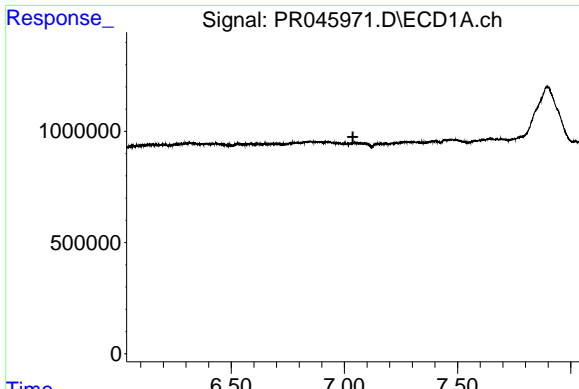
#26 AR-1254-1

R.T.: 6.850 min  
 Delta R.T.: 0.030 min  
 Response: 182040  
 Conc: 2.88 ng/ml



#26 AR-1254-1

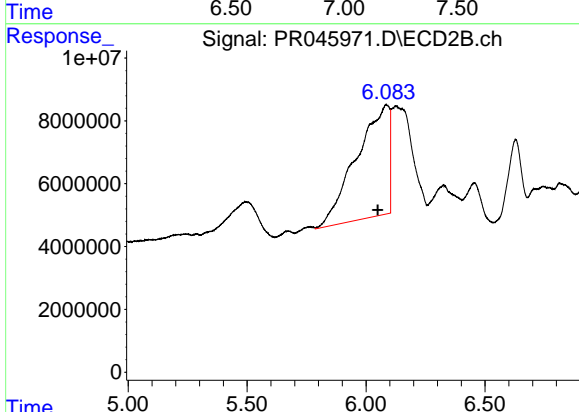
R.T.: 0.000 min  
 Exp R.T. : 5.901 min  
 Response: 0  
 Conc: N.D.



#27 AR-1254-2

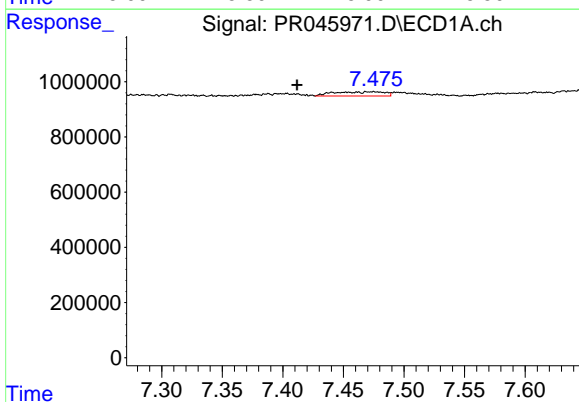
R.T.: 0.000 min  
 Exp R.T.: 7.038 min  
 Response: 0  
 Conc: N.D.

Instrument :  
 ECD\_R  
 ClientSampleId :



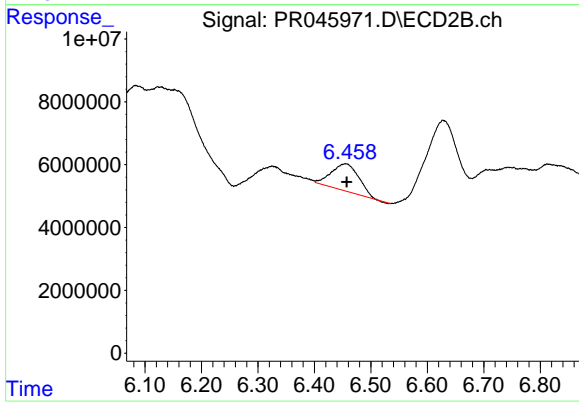
#27 AR-1254-2

R.T.: 6.084 min  
 Delta R.T.: 0.035 min  
 Response: 337684586  
 Conc: 567.44 ng/ml



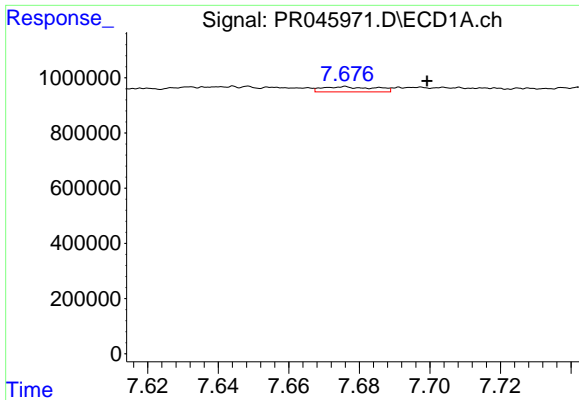
#28 AR-1254-3

R.T.: 7.475 min  
 Delta R.T.: 0.064 min  
 Response: 445573  
 Conc: 4.21 ng/ml



#28 AR-1254-3

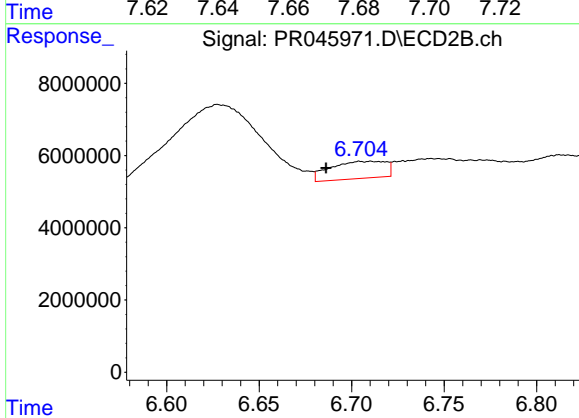
R.T.: 6.455 min  
 Delta R.T.: -0.002 min  
 Response: 29154650  
 Conc: 29.56 ng/ml



#29 AR-1254-4

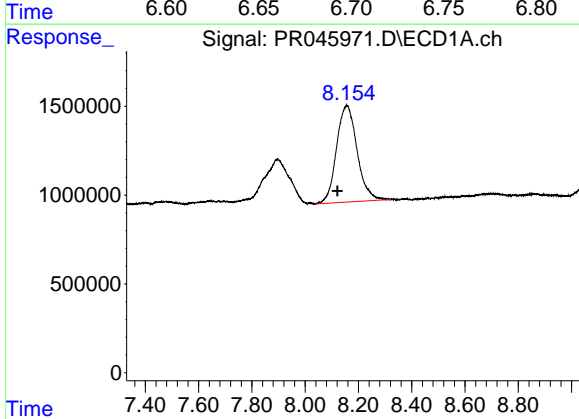
R.T.: 7.676 min  
 Delta R.T.: -0.024 min  
 Response: 194699  
 Conc: 2.43 ng/ml

Instrument :  
 ECD\_R  
 ClientSampleId :



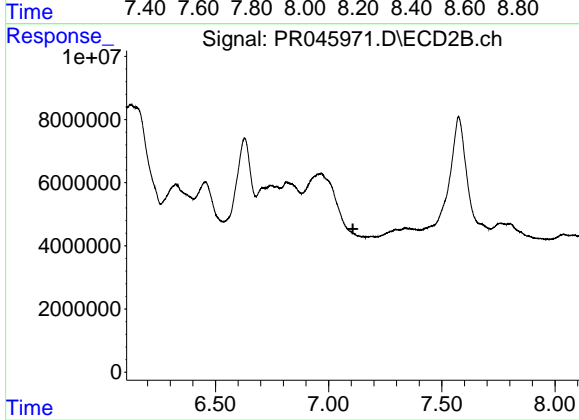
#29 AR-1254-4

R.T.: 6.710 min  
 Delta R.T.: 0.024 min  
 Response: 9878934  
 Conc: 15.52 ng/ml



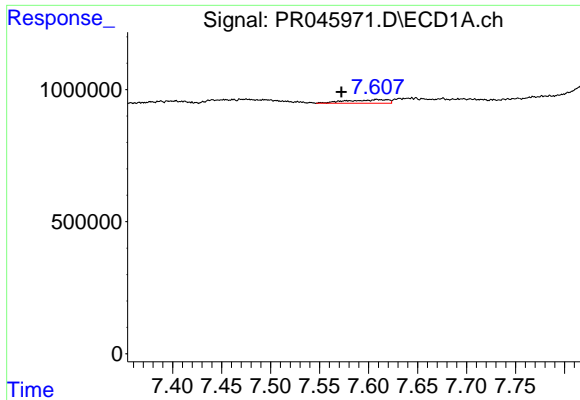
#30 AR-1254-5

R.T.: 8.156 min  
 Delta R.T.: 0.034 min  
 Response: 29166904  
 Conc: 340.56 ng/ml



#30 AR-1254-5

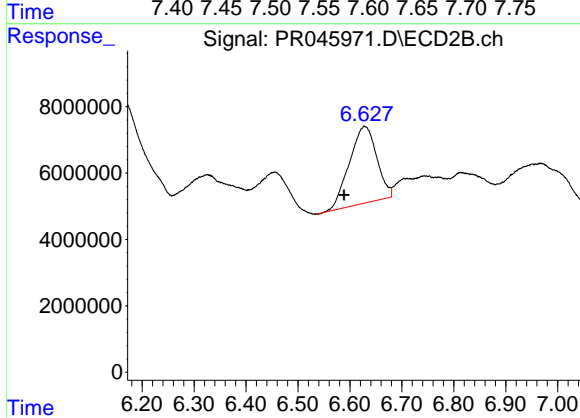
R.T.: 0.000 min  
 Exp R.T.: 7.107 min  
 Response: 0  
 Conc: N.D.



#31 AR-1260-1

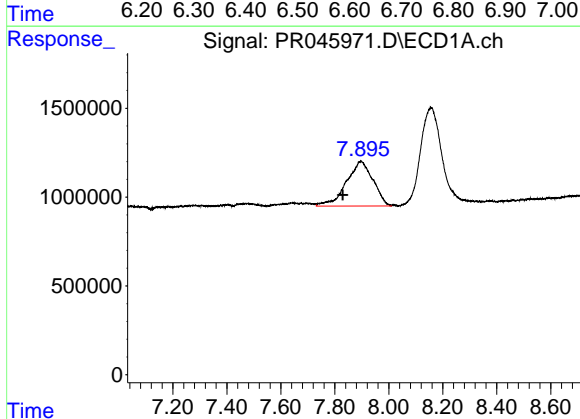
R.T.: 7.608 min  
 Delta R.T.: 0.036 min  
 Response: 391533  
 Conc: 5.45 ng/ml

Instrument :  
 ECD\_R  
 ClientSampleId :



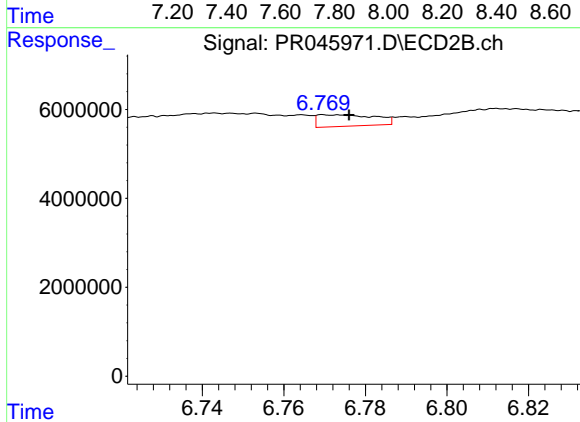
#31 AR-1260-1

R.T.: 6.628 min  
 Delta R.T.: 0.039 min  
 Response: 85106588  
 Conc: 152.11 ng/ml



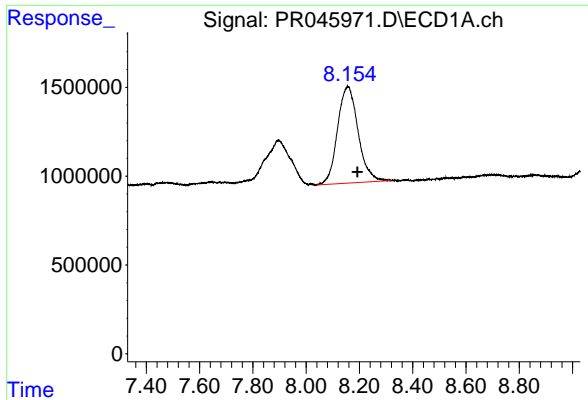
#32 AR-1260-2

R.T.: 7.896 min  
 Delta R.T.: 0.067 min  
 Response: 17216004  
 Conc: 198.86 ng/ml



#32 AR-1260-2

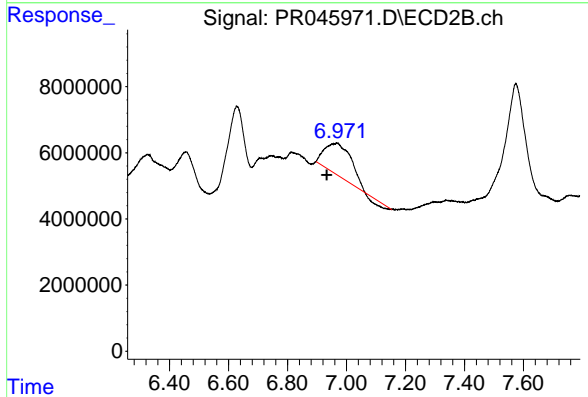
R.T.: 6.770 min  
 Delta R.T.: -0.006 min  
 Response: 2532402  
 Conc: 3.73 ng/ml



#33 AR-1260-3

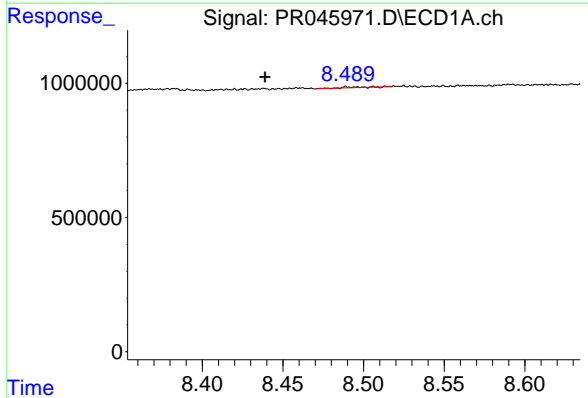
R.T.: 8.156 min  
 Delta R.T.: -0.037 min  
 Response: 29166904  
 Conc: 443.31 ng/ml

Instrument :  
 ECD\_R  
 ClientSampleId :



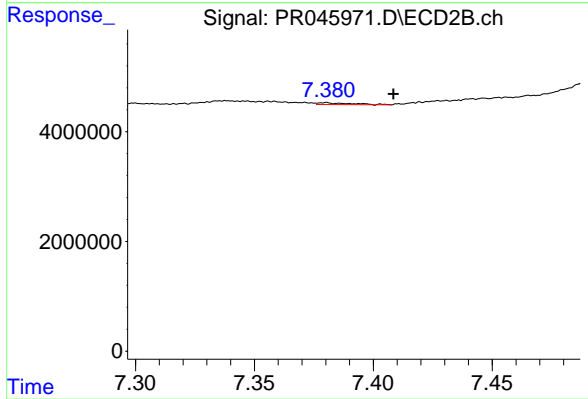
#33 AR-1260-3

R.T.: 6.967 min  
 Delta R.T.: 0.035 min  
 Response: 55564878  
 Conc: 89.11 ng/ml



#34 AR-1260-4

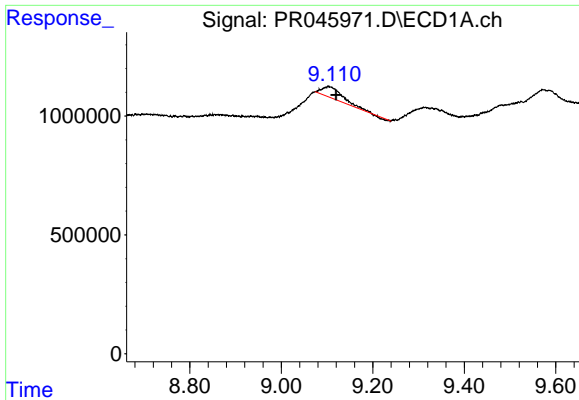
R.T.: 8.489 min  
 Delta R.T.: 0.050 min  
 Response: 26477  
 Conc: 0.34 ng/ml



#34 AR-1260-4

R.T.: 7.380 min  
 Delta R.T.: -0.029 min  
 Response: 327349  
 Conc: 0.62 ng/ml

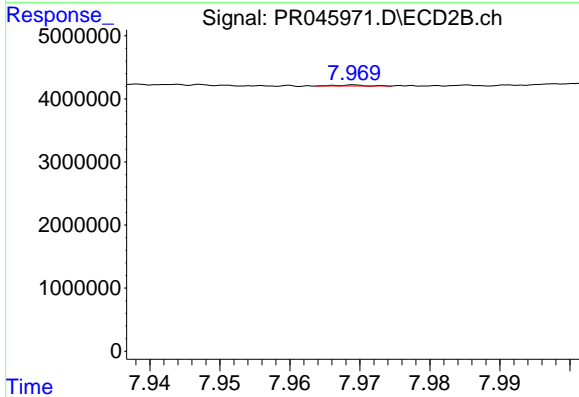




#38 AR-1262-3

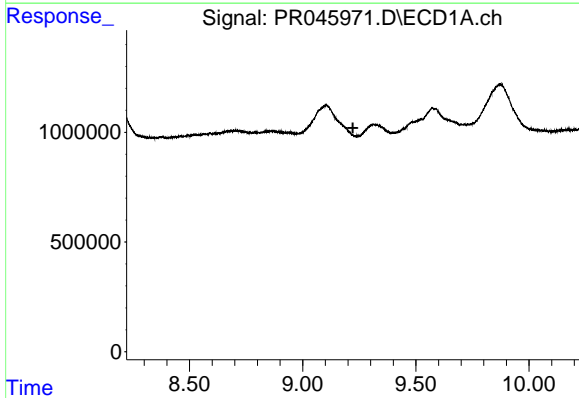
R.T.: 9.104 min  
 Delta R.T.: -0.016 min  
 Response: 1372474  
 Conc: 16.53 ng/ml

Instrument :  
 ECD\_R  
 ClientSampled :



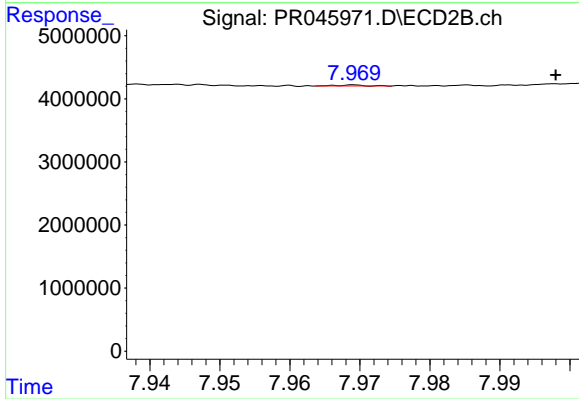
#38 AR-1262-3

R.T.: 7.969 min  
 Delta R.T.: 0.035 min  
 Response: 45480  
 Conc: 0.07 ng/ml



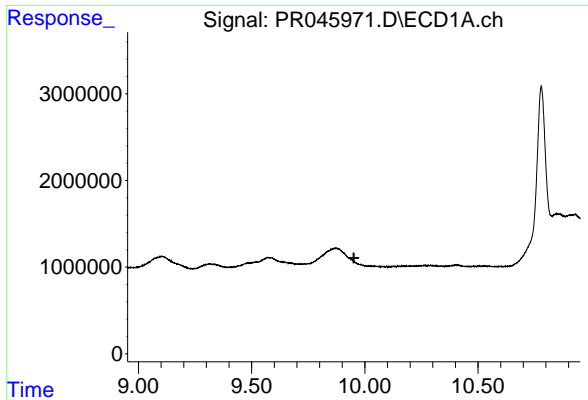
#39 AR-1262-4

R.T.: 0.000 min  
 Exp R.T. : 9.222 min  
 Response: 0  
 Conc: N.D.



#39 AR-1262-4

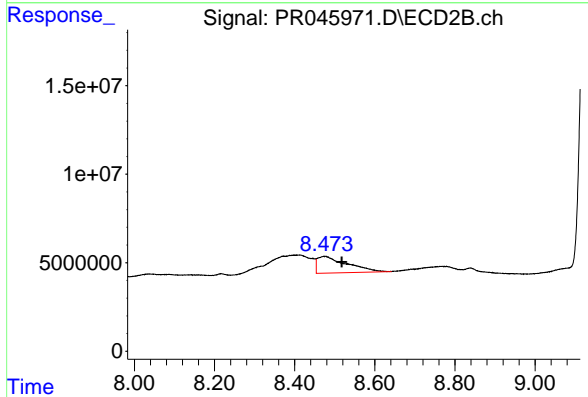
R.T.: 7.969 min  
 Delta R.T.: -0.029 min  
 Response: 45480  
 Conc: 0.04 ng/ml



#40 AR-1262-5

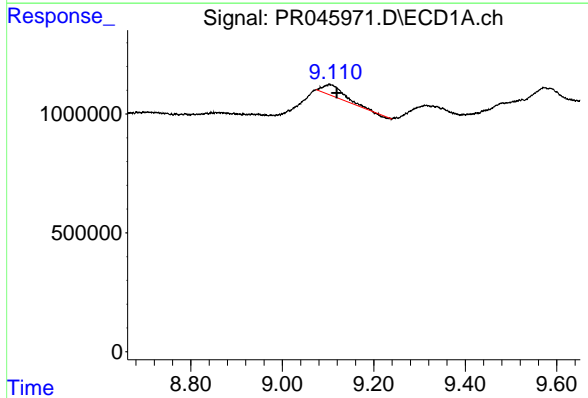
R.T.: 0.000 min  
 Exp R.T.: 9.952 min  
 Response: 0  
 Conc: N.D.

Instrument :  
 ECD\_R  
 ClientSampled :



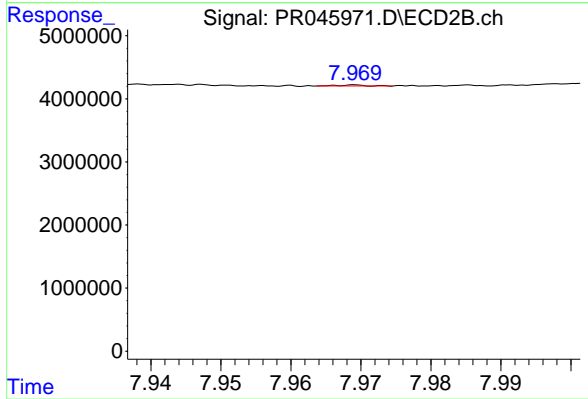
#40 AR-1262-5

R.T.: 8.475 min  
 Delta R.T.: -0.043 min  
 Response: 47693323  
 Conc: 79.49 ng/ml



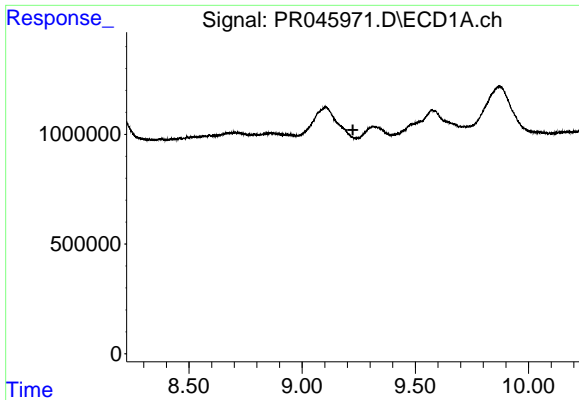
#41 AR-1268-1

R.T.: 9.104 min  
 Delta R.T.: -0.015 min  
 Response: 1372474  
 Conc: 6.15 ng/ml



#41 AR-1268-1

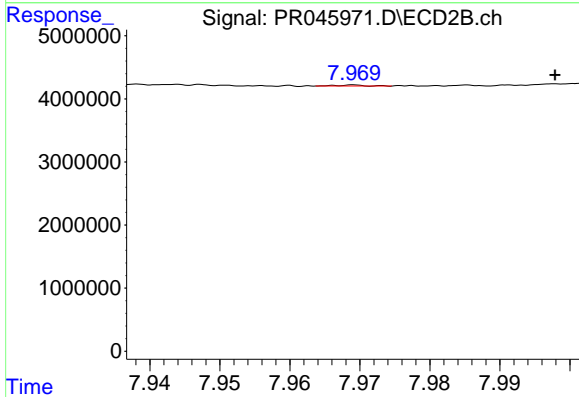
R.T.: 7.969 min  
 Delta R.T.: 0.036 min  
 Response: 45480  
 Conc: 0.02 ng/ml



#42 AR-1268-2

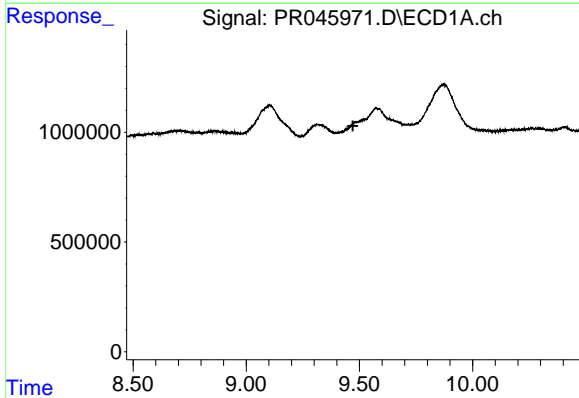
R.T.: 0.000 min  
 Exp R.T. : 9.224 min  
 Response: 0  
 Conc: N.D.

Instrument :  
 ECD\_R  
 ClientSampleId :



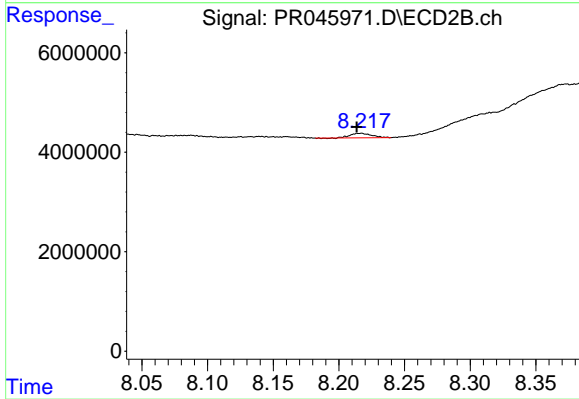
#42 AR-1268-2

R.T.: 7.969 min  
 Delta R.T.: -0.029 min  
 Response: 45480  
 Conc: 0.02 ng/ml



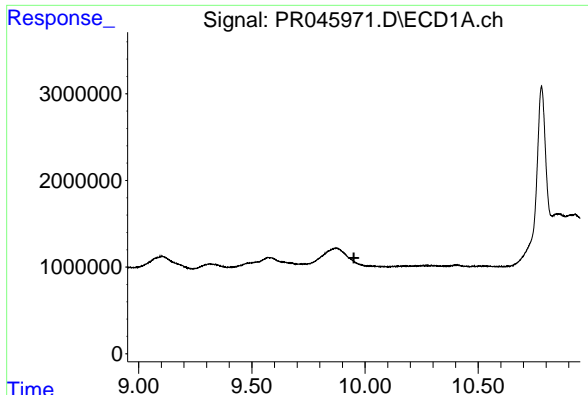
#43 AR-1268-3

R.T.: 0.000 min  
 Exp R.T. : 9.471 min  
 Response: 0  
 Conc: N.D.



#43 AR-1268-3

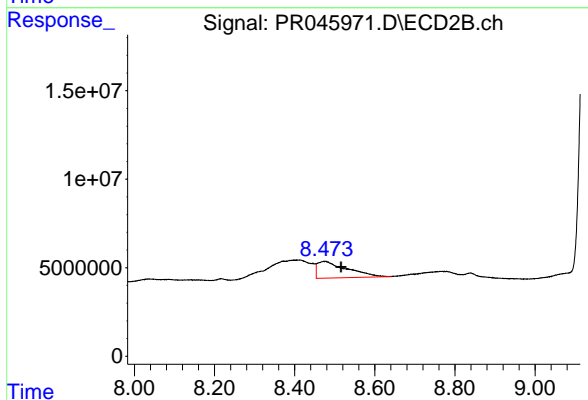
R.T.: 8.216 min  
 Delta R.T.: 0.003 min  
 Response: 1043906  
 Conc: 0.69 ng/ml



#44 AR-1268-4

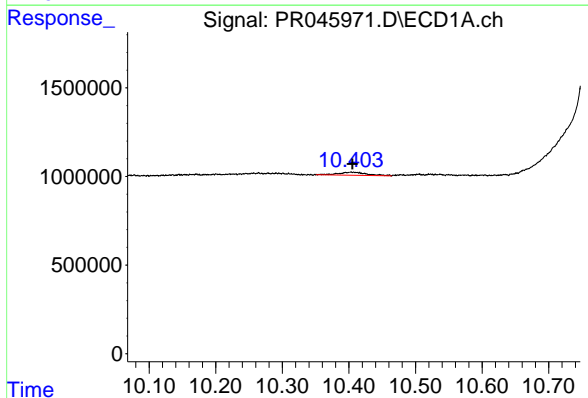
R.T.: 0.000 min  
 Exp R.T.: 9.951 min  
 Response: 0  
 Conc: N.D.

Instrument :  
 ECD\_R  
 ClientSampled :



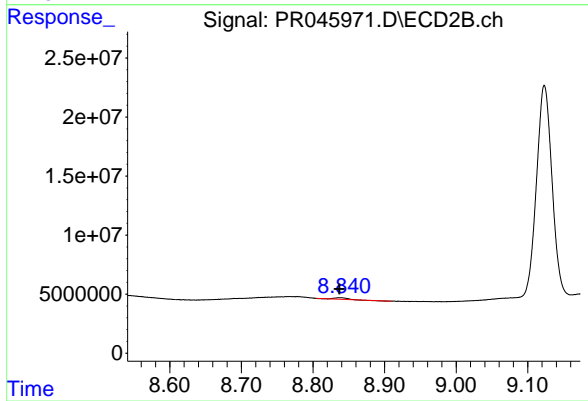
#44 AR-1268-4

R.T.: 8.475 min  
 Delta R.T.: -0.041 min  
 Response: 47693323  
 Conc: 71.19 ng/ml



#45 AR-1268-5

R.T.: 10.404 min  
 Delta R.T.: 0.000 min  
 Response: 493687  
 Conc: 0.85 ng/ml



#45 AR-1268-5

R.T.: 8.839 min  
 Delta R.T.: 0.002 min  
 Response: 1354044  
 Conc: 0.28 ng/ml