

Data Path : Z:\pestpcbsrv\HPCHEM1\ECD_R\Data\PR062719\
 Data File : PR038931.D
 Signal(s) : Signal #1: ECD1A.ch Signal #2: ECD2B.ch
 Acq On : 27 Jun 2019 10:39
 Operator : SM\AJ
 Sample : PB120943BSD
 Misc :
 ALS Vial : 6 Sample Multiplier: 1

Instrument :
 ECD_R
 ClientSampleId :
 PB120943BSD

Integration File signal 1: autoint1.e
 Integration File signal 2: autoint2.e
 Quant Time: Jun 28 03:31:07 2019
 Quant Method : Z:\pestpcbsrv\HPCHEM1\ECD_R\Method\PR062619.M
 Quant Title : GC EXTRACTABLES
 QLast Update : Thu Jun 27 06:40:13 2019
 Response via : Initial Calibration
 Integrator: ChemStation

Volume Inj. : 2 µl
 Signal #1 Phase : ZB-MR1 Signal #2 Phase: ZB-MR2
 Signal #1 Info : 30Mx0.32mmx 0.50µ Signal #2 Info : 30M x 0.32mm x 0.25µm

Compound	RT#1	RT#2	Resp#1	Resp#2	ng/ml	ng/ml

System Monitoring Compounds						
1) SA Tetrachlo...	3.770	4.617	17490284	62686328	17.827	17.636
2) SA Decachlor...	8.717	10.361	35157018	117.5E6	14.950	16.182
Target Compounds						
3) L1 AR-1016-1	4.839	5.771	2092397	8839976	43.103	51.805
4) L1 AR-1016-2	4.856	5.794	3123078	12101692	41.019	49.358
5) L1 AR-1016-3	5.030	5.856	1528233	7455348	40.048	48.796
6) L1 AR-1016-4	5.070	5.954	1289708	4735828	40.276	39.250
7) L1 AR-1016-5	5.280	6.243	1599187	4470565	36.899	34.740
10) L2 AR-1221-3	4.141	4.985	920798	3719971	31.876	39.299
11) L3 AR-1232-1	4.141	4.985	920798	3719971	35.619	44.926 #
12) L3 AR-1232-2	4.856	5.508	3123078	5784594	94.997	127.513 #
13) L3 AR-1232-3	5.030	5.794	1528233	12101692	96.856	119.102
14) L3 AR-1232-4	5.111	5.954	1297862	4735828	89.381	94.908
15) L3 AR-1232-5	5.280	6.040	1599187	4556028	96.003	121.556 #
16) L4 AR-1242-1	4.839	5.771	2092397	8839976	51.964	62.027
17) L4 AR-1242-2	4.856	5.794	3123078	12101692	46.483	58.846 #
18) L4 AR-1242-3	5.030	5.856	1528233	7455348	46.026	59.003 #
19) L4 AR-1242-4	5.111	5.954	1297862	4735828	38.786	46.311
20) L4 AR-1242-5	5.626	6.616	1426668	6825978	29.619	52.355 #
21) L5 AR-1248-1	4.839	5.771	2092397	8839976	58.882	74.027 #
22) L5 AR-1248-2	5.070	6.040	1289708	4556028	25.422	27.784
23) L5 AR-1248-3	5.111	6.243	1297862	4470565	24.530	22.992
24) L5 AR-1248-4	5.280	6.616	1599187	6825978	24.120	27.785
25) L5 AR-1248-5	5.626	6.616	1426668	6825978	19.504	29.127 #
26) L6 AR-1254-1	5.626	6.616	1426668	6825978	15.080	33.474 #
27) L6 AR-1254-2	5.770	6.829	1556256	5620485	18.540	17.189
28) L6 AR-1254-3	6.181	7.201	3306817	11202176	22.373	29.323 #
29) L6 AR-1254-4	6.415	0.000	2177662	0	19.120	N.D. #
30) L6 AR-1254-5	6.804	7.891	6080968	20493645	43.516	62.878 #
31) L7 AR-1260-1	6.296	7.355	4216313	12818108	43.420	47.098
32) L7 AR-1260-2	6.480	7.608	5504226	15004761	43.707	44.036
33) L7 AR-1260-3	6.632	7.964	4660126	9652154	41.022	35.565
34) L7 AR-1260-4	7.098	8.193	3434008	11843254	33.617	36.551
35) L7 AR-1260-5	7.336	8.519	8824689	23798205	33.479	33.956
36) L8 AR-1262-1	6.894	7.964	1772399	9652154	25.446	20.288
37) L8 AR-1262-2	7.336	8.519	8824689	23798205	24.850	24.789
38) L8 AR-1262-3	7.617	8.856	1773465	16336179	13.182	25.578 #
39) L8 AR-1262-4	7.679	8.911	10854651	8794130	41.490	18.212 #
40) L8 AR-1262-5	8.172	9.599	2173638	6041761	17.199	16.805
41) L9 AR-1268-1	7.617	8.856	1773465	16336179	4.930	16.332 #
42) L9 AR-1268-2	7.679	8.911	10854651	8794130	32.463	9.334 #
44) L9 AR-1268-4	8.172	9.599	2173638	6041761	17.358	16.890

Data Path : Z:\pestpcbsrv\HPCHEM1\ECD_R\Data\PR062719\
 Data File : PR038931.D
 Signal(s) : Signal #1: ECD1A.ch Signal #2: ECD2B.ch
 Acq On : 27 Jun 2019 10:39
 Operator : SM\AJ
 Sample : PB120943BSD
 Misc :
 ALS Vial : 6 Sample Multiplier: 1

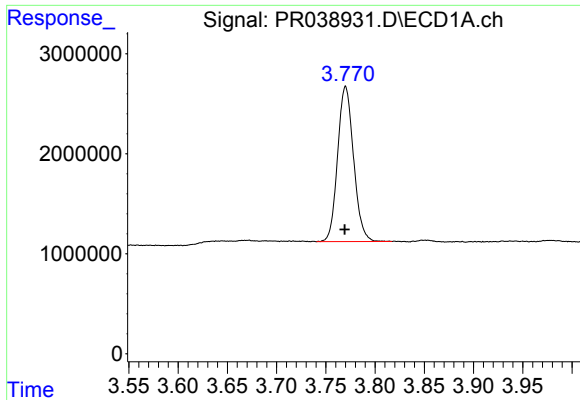
Instrument :
 ECD_R
 ClientSampleId :
 PB120943BSD

Integration File signal 1: autoint1.e
 Integration File signal 2: autoint2.e
 Quant Time: Jun 28 03:31:07 2019
 Quant Method : Z:\pestpcbsrv\HPCHEM1\ECD_R\Method\PR062619.M
 Quant Title : GC EXTRACTABLES
 QLast Update : Thu Jun 27 06:40:13 2019
 Response via : Initial Calibration
 Integrator: ChemStation

Volume Inj. : 2 µl
 Signal #1 Phase : ZB-MR1 Signal #2 Phase: ZB-MR2
 Signal #1 Info : 30Mx0.32mmx 0.50µ Signal #2 Info : 30M x 0.32mm x 0.25µm

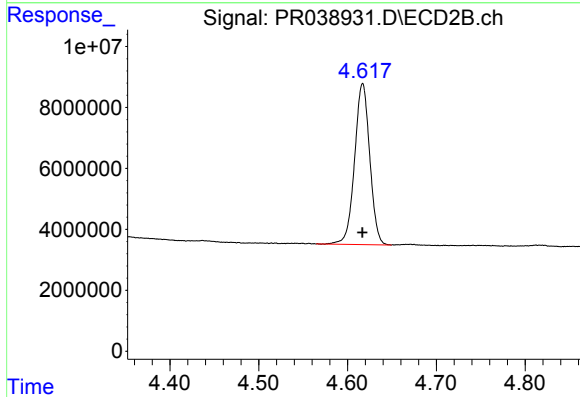
	Compound	RT#1	RT#2	Resp#1	Resp#2	ng/ml	ng/ml
45)	L9 AR-1268-5	8.464	0.000	838476	0	0.843	N.D. #

(f)=RT Delta > 1/2 Window (#)=Amounts differ by > 25% (m)=manual int.

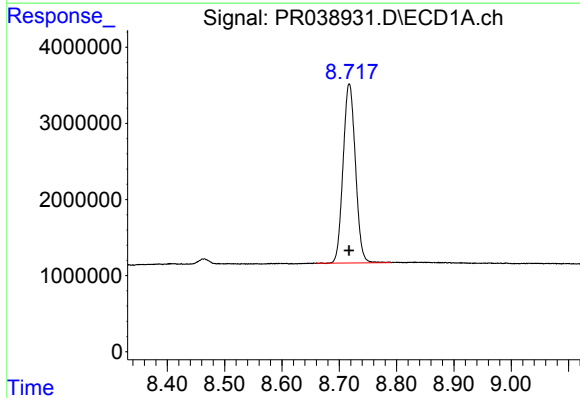


#1 Tetrachloro-m-xylene
 R.T.: 3.770 min
 Delta R.T.: 0.001 min
 Response: 17490284
 Conc: 17.83 ng/ml

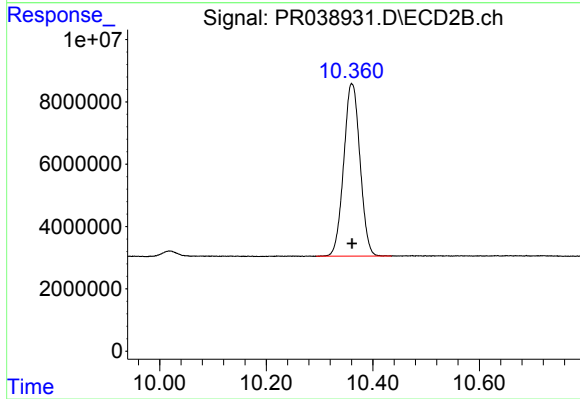
Instrument :
 ECD_R
 ClientSampleId :
 PB120943BSD



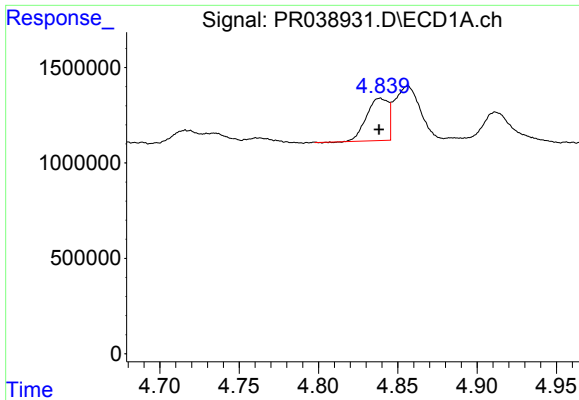
#1 Tetrachloro-m-xylene
 R.T.: 4.617 min
 Delta R.T.: 0.000 min
 Response: 62686328
 Conc: 17.64 ng/ml



#2 Decachlorobiphenyl
 R.T.: 8.717 min
 Delta R.T.: 0.000 min
 Response: 35157018
 Conc: 14.95 ng/ml

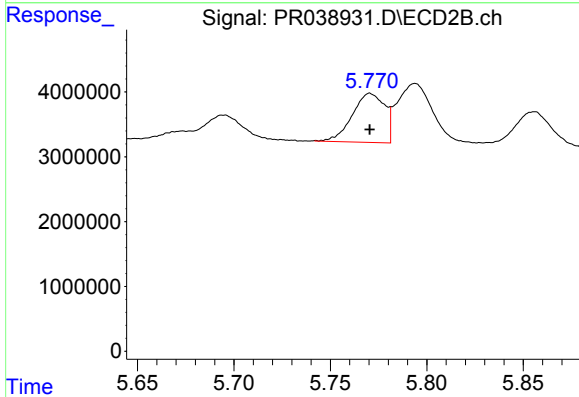


#2 Decachlorobiphenyl
 R.T.: 10.361 min
 Delta R.T.: 0.000 min
 Response: 117522633
 Conc: 16.18 ng/ml

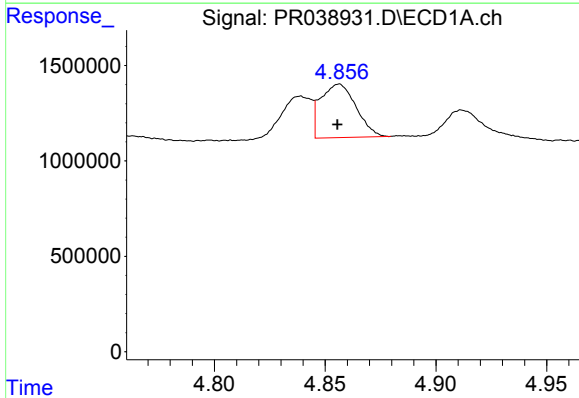


#3 AR-1016-1
 R.T.: 4.839 min
 Delta R.T.: 0.000 min
 Response: 2092397
 Conc: 43.10 ng/ml

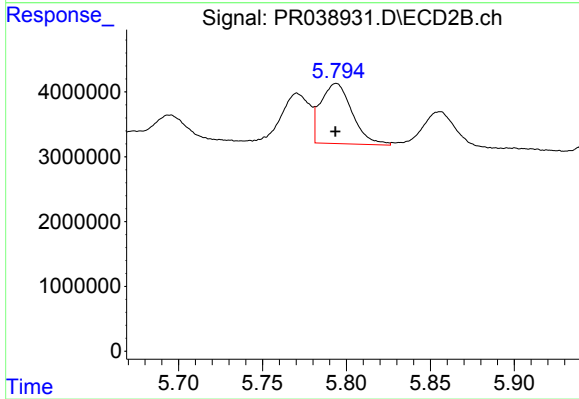
Instrument :
 ECD_R
 ClientSampleId :
 PB120943BSD



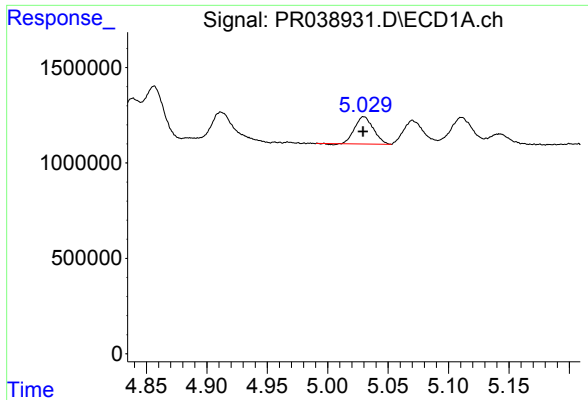
#3 AR-1016-1
 R.T.: 5.771 min
 Delta R.T.: 0.000 min
 Response: 8839976
 Conc: 51.81 ng/ml



#4 AR-1016-2
 R.T.: 4.856 min
 Delta R.T.: 0.000 min
 Response: 3123078
 Conc: 41.02 ng/ml

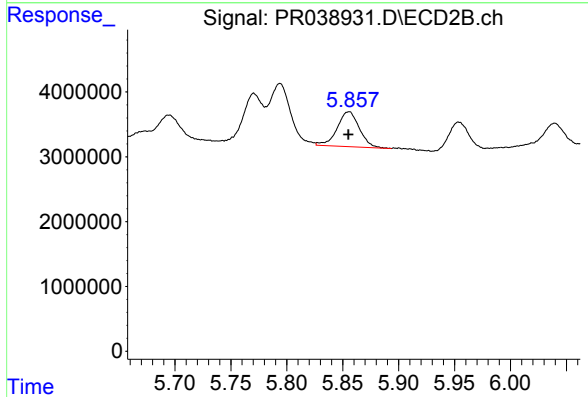


#4 AR-1016-2
 R.T.: 5.794 min
 Delta R.T.: 0.000 min
 Response: 12101692
 Conc: 49.36 ng/ml

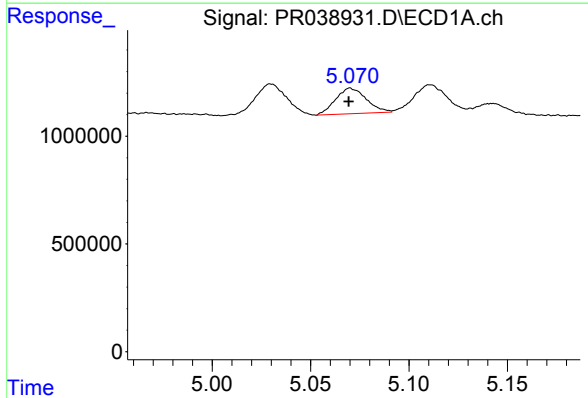


#5 AR-1016-3
 R.T.: 5.030 min
 Delta R.T.: 0.000 min
 Response: 1528233
 Conc: 40.05 ng/ml

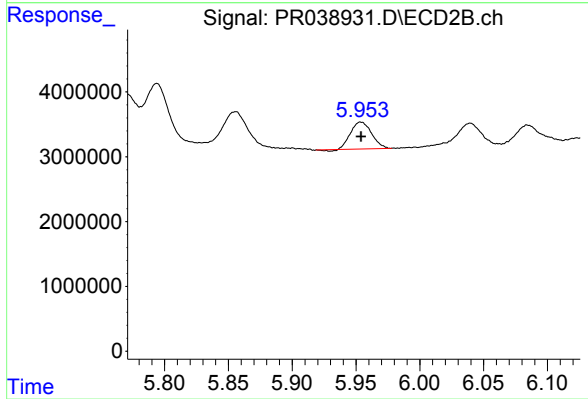
Instrument :
 ECD_R
 ClientSampleId :
 PB120943BSD



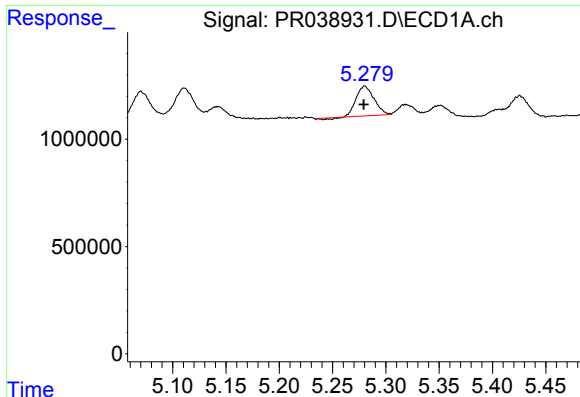
#5 AR-1016-3
 R.T.: 5.856 min
 Delta R.T.: 0.000 min
 Response: 7455348
 Conc: 48.80 ng/ml



#6 AR-1016-4
 R.T.: 5.070 min
 Delta R.T.: 0.001 min
 Response: 1289708
 Conc: 40.28 ng/ml



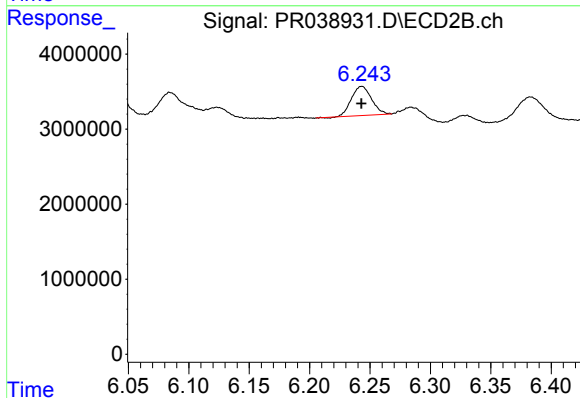
#6 AR-1016-4
 R.T.: 5.954 min
 Delta R.T.: 0.000 min
 Response: 4735828
 Conc: 39.25 ng/ml



#7 AR-1016-5

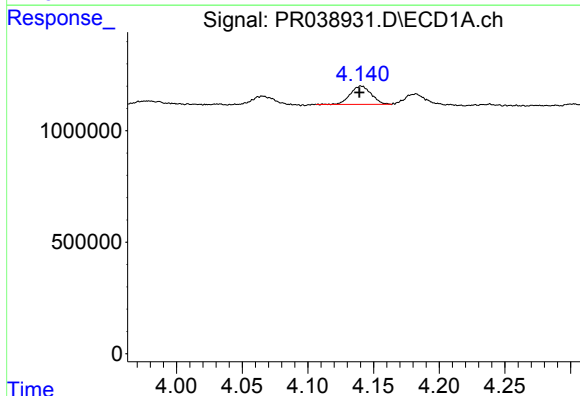
R.T.: 5.280 min
Delta R.T.: 0.000 min
Response: 1599187
Conc: 36.90 ng/ml

Instrument :
ECD_R
ClientSampleId :
PB120943BSD



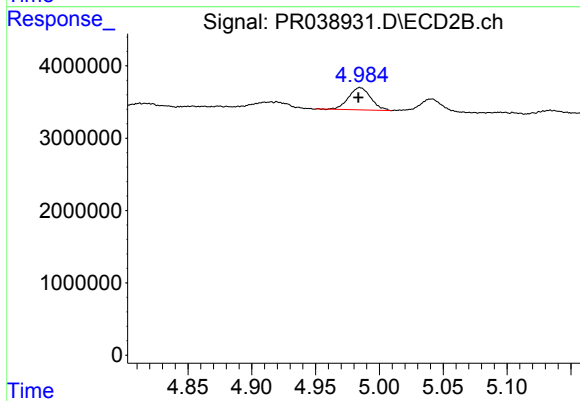
#7 AR-1016-5

R.T.: 6.243 min
Delta R.T.: 0.000 min
Response: 4470565
Conc: 34.74 ng/ml



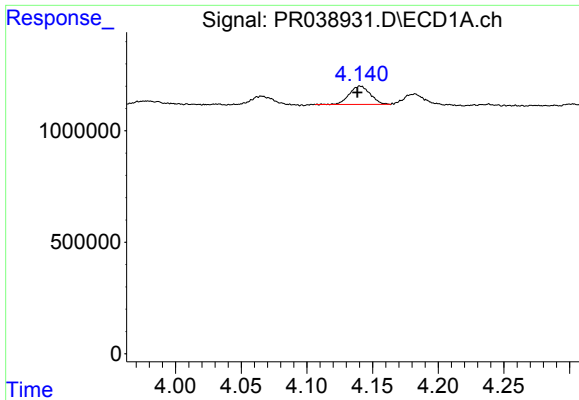
#10 AR-1221-3

R.T.: 4.141 min
Delta R.T.: 0.002 min
Response: 920798
Conc: 31.88 ng/ml



#10 AR-1221-3

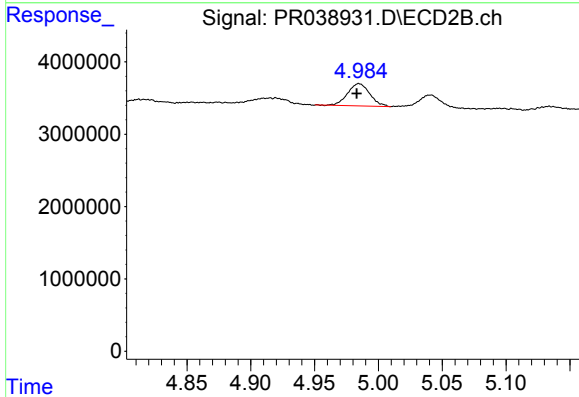
R.T.: 4.985 min
Delta R.T.: 0.001 min
Response: 3719971
Conc: 39.30 ng/ml



#11 AR-1232-1

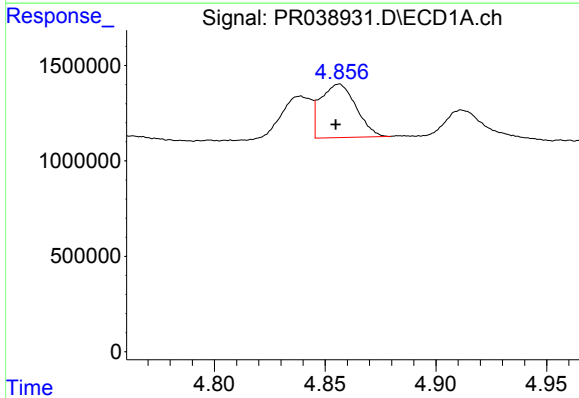
R.T.: 4.141 min
 Delta R.T.: 0.002 min
 Response: 920798
 Conc: 35.62 ng/ml

Instrument :
 ECD_R
 ClientSampleId :
 PB120943BSD



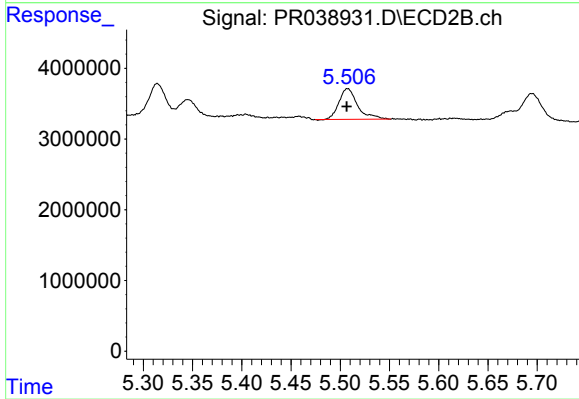
#11 AR-1232-1

R.T.: 4.985 min
 Delta R.T.: 0.002 min
 Response: 3719971
 Conc: 44.93 ng/ml



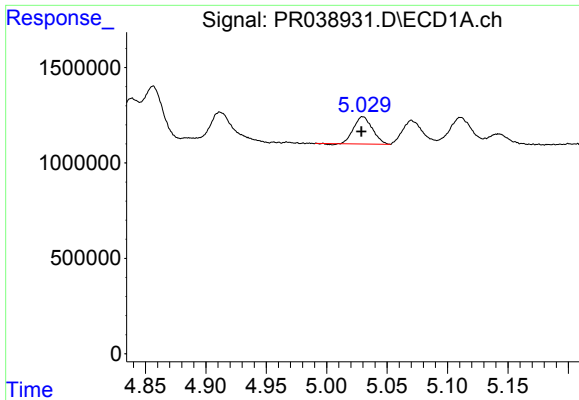
#12 AR-1232-2

R.T.: 4.856 min
 Delta R.T.: 0.001 min
 Response: 3123078
 Conc: 95.00 ng/ml



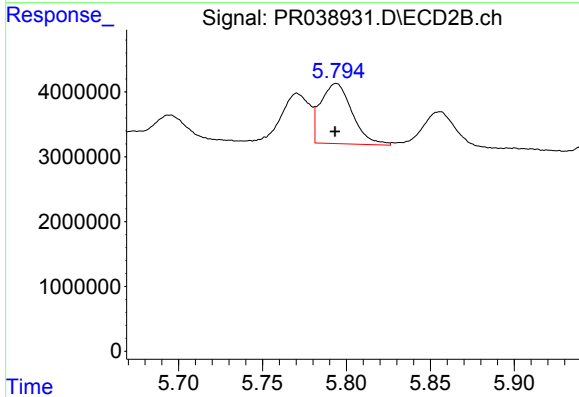
#12 AR-1232-2

R.T.: 5.508 min
 Delta R.T.: 0.000 min
 Response: 5784594
 Conc: 127.51 ng/ml

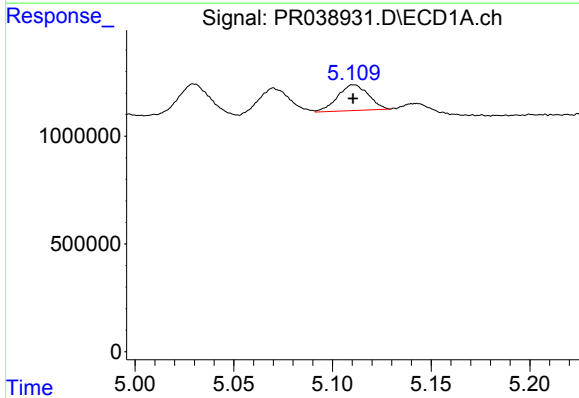


#13 AR-1232-3
 R.T.: 5.030 min
 Delta R.T.: 0.001 min
 Response: 1528233
 Conc: 96.86 ng/ml

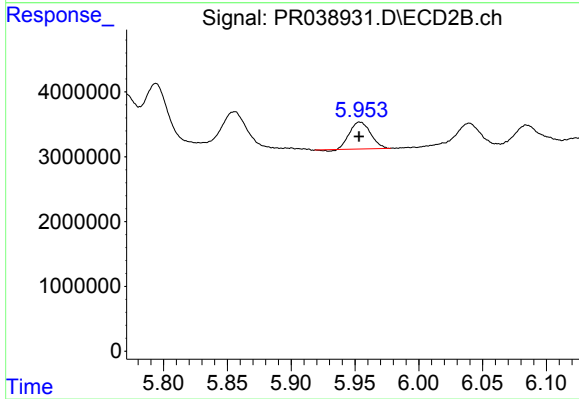
Instrument :
 ECD_R
 ClientSampleId :
 PB120943BSD



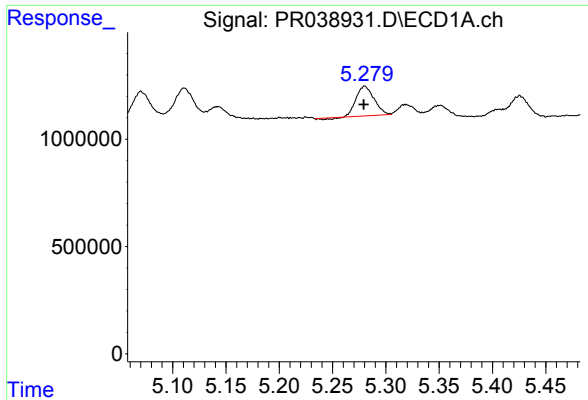
#13 AR-1232-3
 R.T.: 5.794 min
 Delta R.T.: 0.000 min
 Response: 12101692
 Conc: 119.10 ng/ml



#14 AR-1232-4
 R.T.: 5.111 min
 Delta R.T.: 0.000 min
 Response: 1297862
 Conc: 89.38 ng/ml



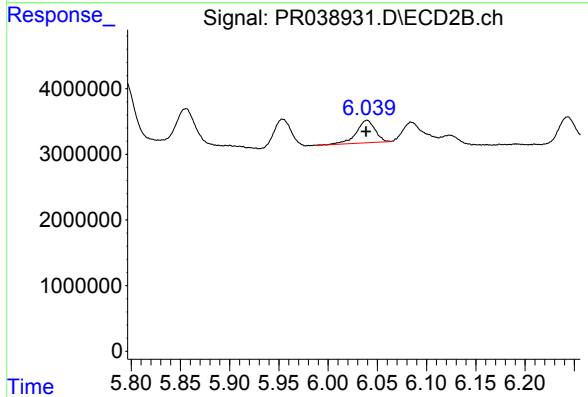
#14 AR-1232-4
 R.T.: 5.954 min
 Delta R.T.: 0.000 min
 Response: 4735828
 Conc: 94.91 ng/ml



#15 AR-1232-5

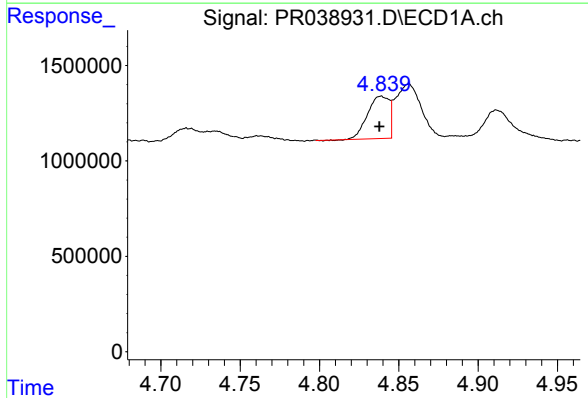
R.T.: 5.280 min
 Delta R.T.: 0.000 min
 Response: 1599187
 Conc: 96.00 ng/ml

Instrument :
 ECD_R
ClientSampleId :
 PB120943BSD



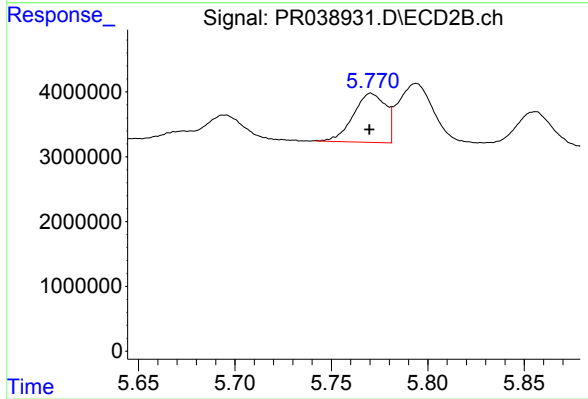
#15 AR-1232-5

R.T.: 6.040 min
 Delta R.T.: 0.000 min
 Response: 4556028
 Conc: 121.56 ng/ml



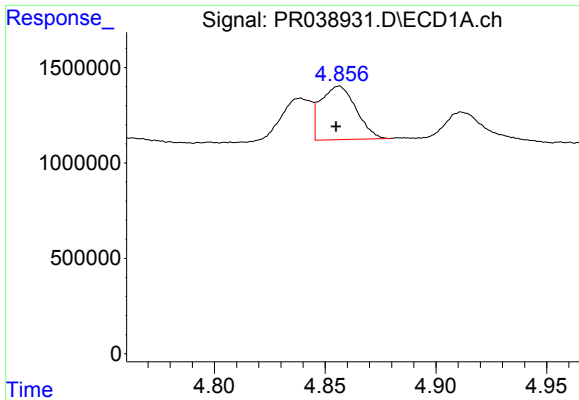
#16 AR-1242-1

R.T.: 4.839 min
 Delta R.T.: 0.001 min
 Response: 2092397
 Conc: 51.96 ng/ml



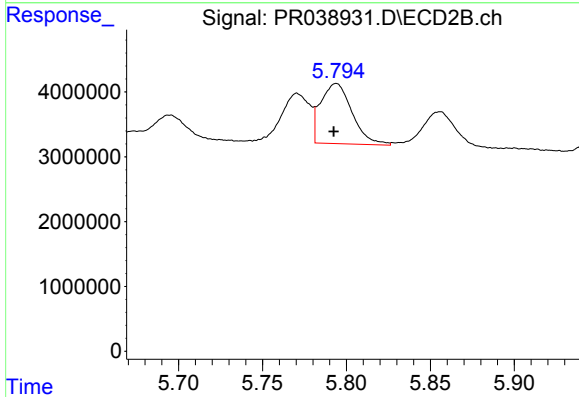
#16 AR-1242-1

R.T.: 5.771 min
 Delta R.T.: 0.000 min
 Response: 8839976
 Conc: 62.03 ng/ml

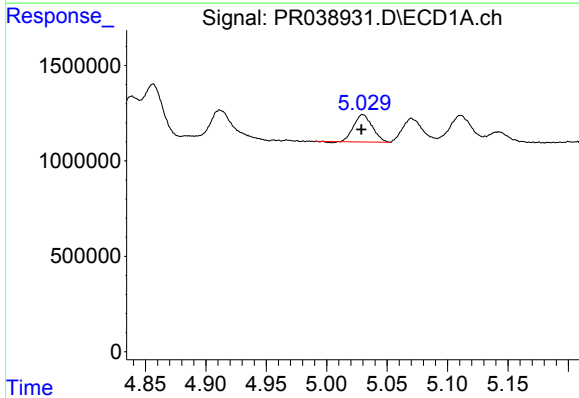


#17 AR-1242-2
 R.T.: 4.856 min
 Delta R.T.: 0.001 min
 Response: 3123078
 Conc: 46.48 ng/ml

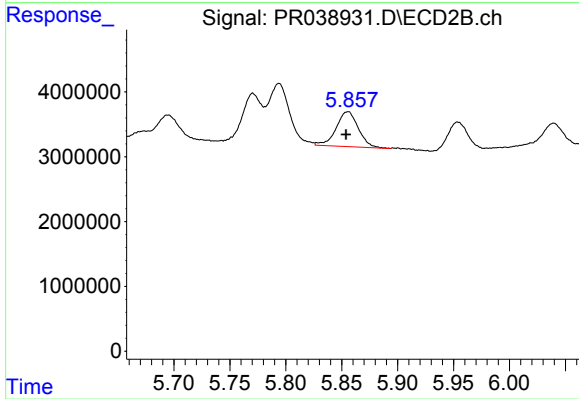
Instrument :
 ECD_R
ClientSampleId :
 PB120943BSD



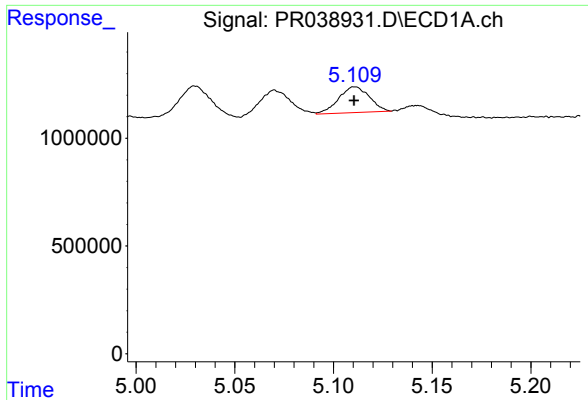
#17 AR-1242-2
 R.T.: 5.794 min
 Delta R.T.: 0.002 min
 Response: 12101692
 Conc: 58.85 ng/ml



#18 AR-1242-3
 R.T.: 5.030 min
 Delta R.T.: 0.001 min
 Response: 1528233
 Conc: 46.03 ng/ml

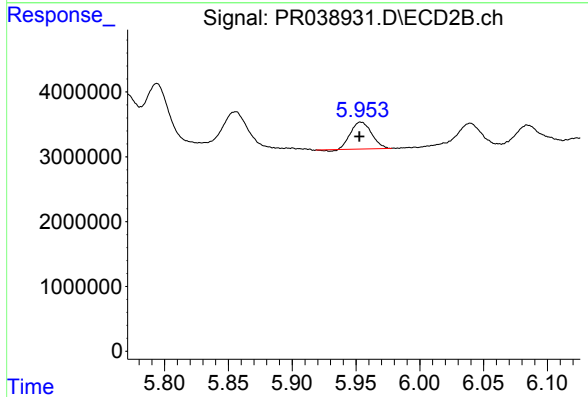


#18 AR-1242-3
 R.T.: 5.856 min
 Delta R.T.: 0.002 min
 Response: 7455348
 Conc: 59.00 ng/ml

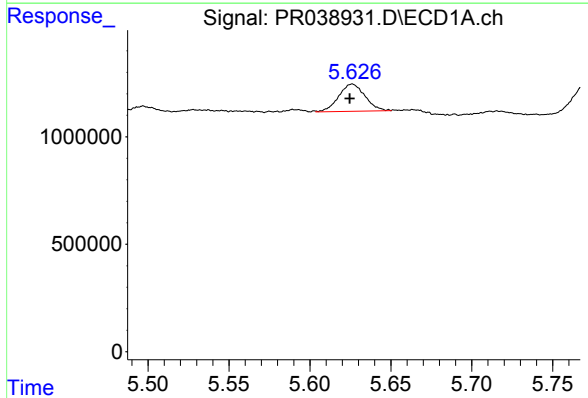


#19 AR-1242-4
 R.T.: 5.111 min
 Delta R.T.: 0.000 min
 Response: 1297862
 Conc: 38.79 ng/ml

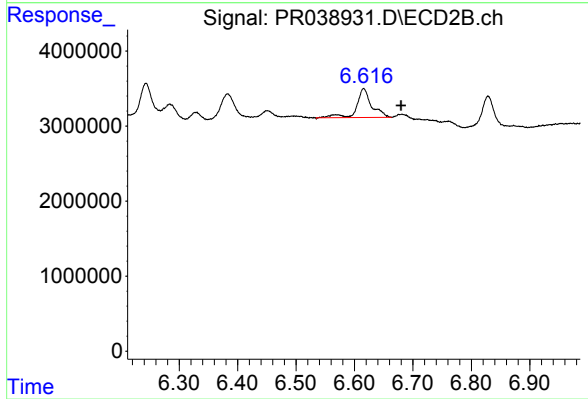
Instrument :
 ECD_R
ClientSampleId :
 PB120943BSD



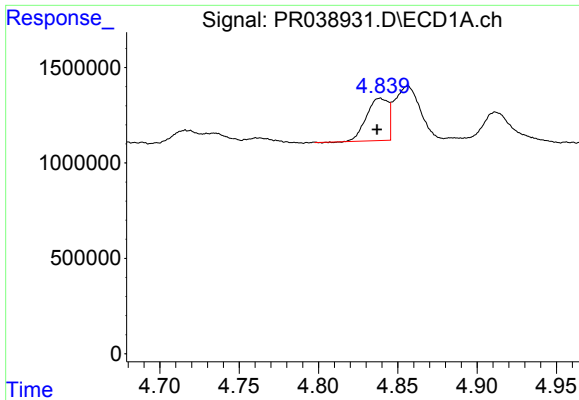
#19 AR-1242-4
 R.T.: 5.954 min
 Delta R.T.: 0.001 min
 Response: 4735828
 Conc: 46.31 ng/ml



#20 AR-1242-5
 R.T.: 5.626 min
 Delta R.T.: 0.002 min
 Response: 1426668
 Conc: 29.62 ng/ml

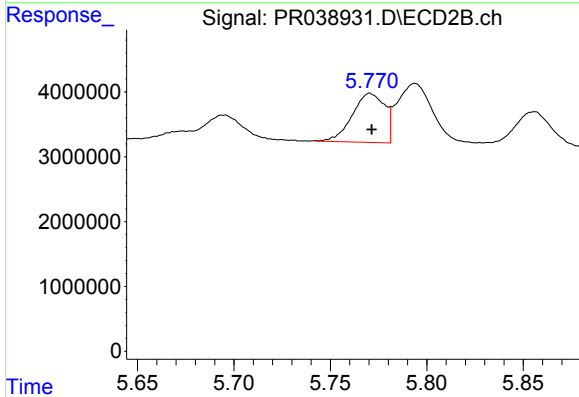


#20 AR-1242-5
 R.T.: 6.616 min
 Delta R.T.: -0.064 min
 Response: 6825978
 Conc: 52.36 ng/ml

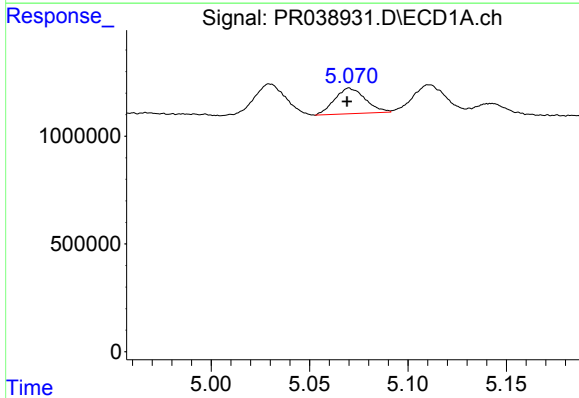


#21 AR-1248-1
 R.T.: 4.839 min
 Delta R.T.: 0.002 min
 Response: 2092397
 Conc: 58.88 ng/ml

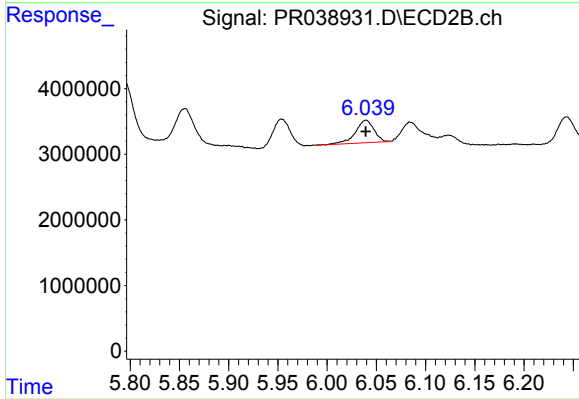
Instrument :
 ECD_R
ClientSampleId :
 PB120943BSD



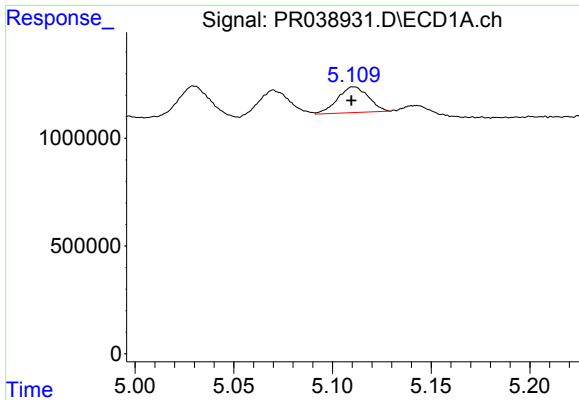
#21 AR-1248-1
 R.T.: 5.771 min
 Delta R.T.: 0.000 min
 Response: 8839976
 Conc: 74.03 ng/ml



#22 AR-1248-2
 R.T.: 5.070 min
 Delta R.T.: 0.001 min
 Response: 1289708
 Conc: 25.42 ng/ml

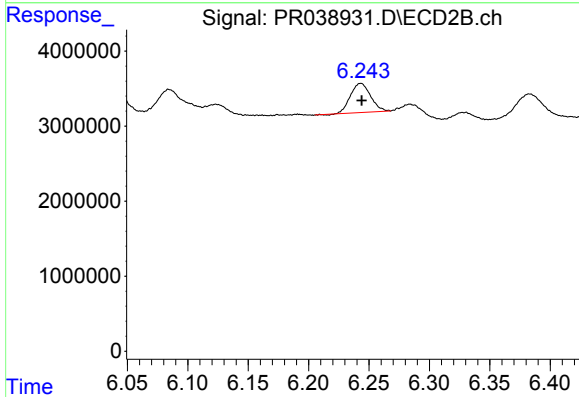


#22 AR-1248-2
 R.T.: 6.040 min
 Delta R.T.: 0.000 min
 Response: 4556028
 Conc: 27.78 ng/ml

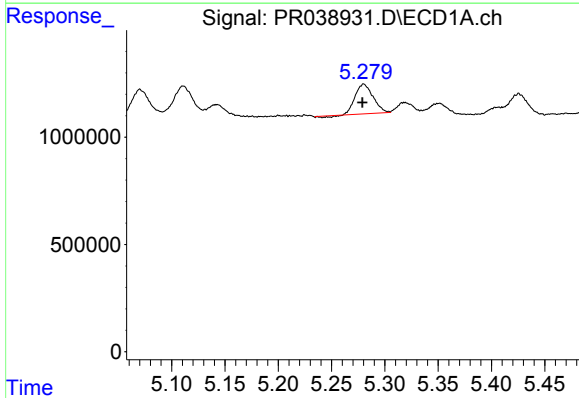


#23 AR-1248-3
 R.T.: 5.111 min
 Delta R.T.: 0.001 min
 Response: 1297862
 Conc: 24.53 ng/ml

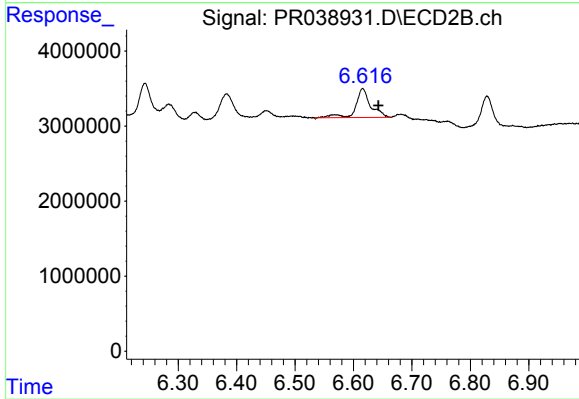
Instrument :
 ECD_R
ClientSampleId :
 PB120943BSD



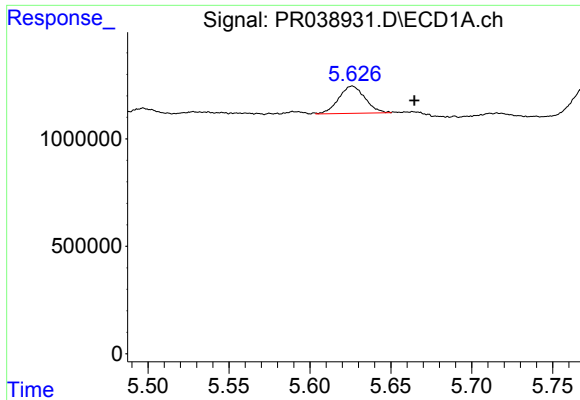
#23 AR-1248-3
 R.T.: 6.243 min
 Delta R.T.: 0.000 min
 Response: 4470565
 Conc: 22.99 ng/ml



#24 AR-1248-4
 R.T.: 5.280 min
 Delta R.T.: 0.001 min
 Response: 1599187
 Conc: 24.12 ng/ml



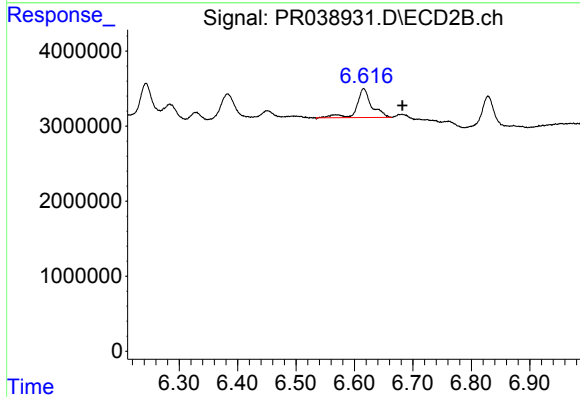
#24 AR-1248-4
 R.T.: 6.616 min
 Delta R.T.: -0.027 min
 Response: 6825978
 Conc: 27.78 ng/ml



#25 AR-1248-5

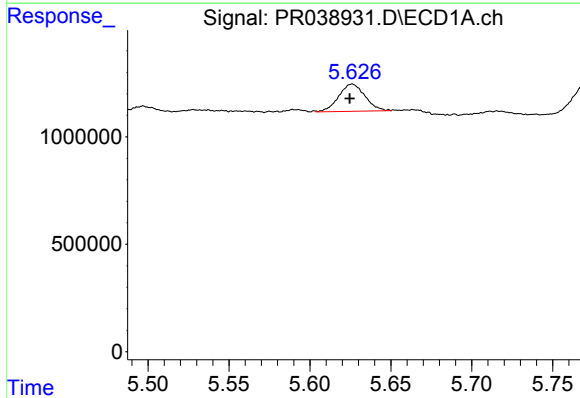
R.T.: 5.626 min
 Delta R.T.: -0.038 min
 Response: 1426668
 Conc: 19.50 ng/ml

Instrument :
 ECD_R
 ClientSampleId :
 PB120943BSD



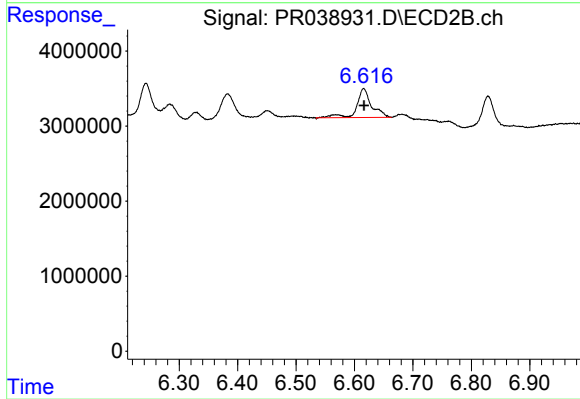
#25 AR-1248-5

R.T.: 6.616 min
 Delta R.T.: -0.066 min
 Response: 6825978
 Conc: 29.13 ng/ml



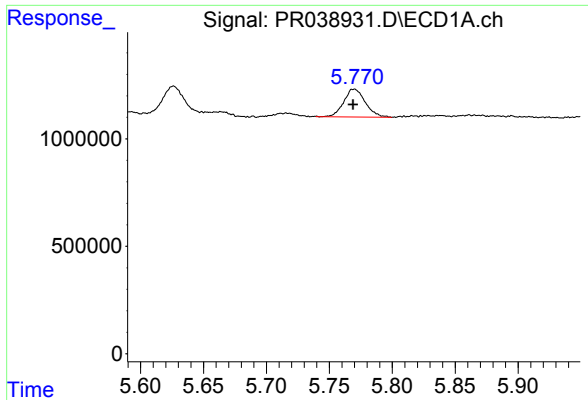
#26 AR-1254-1

R.T.: 5.626 min
 Delta R.T.: 0.002 min
 Response: 1426668
 Conc: 15.08 ng/ml



#26 AR-1254-1

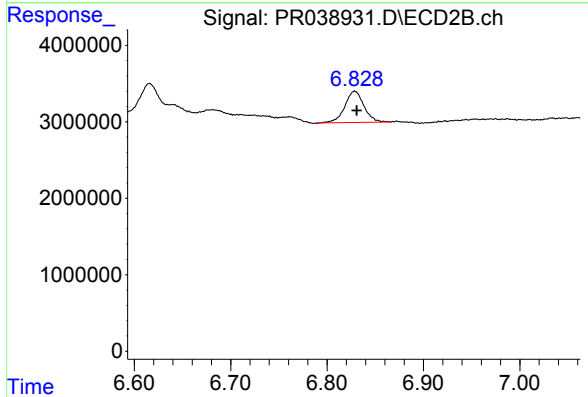
R.T.: 6.616 min
 Delta R.T.: 0.000 min
 Response: 6825978
 Conc: 33.47 ng/ml



#27 AR-1254-2

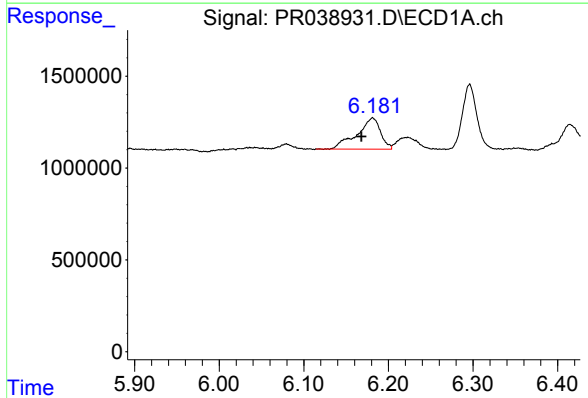
R.T.: 5.770 min
 Delta R.T.: 0.000 min
 Response: 1556256
 Conc: 18.54 ng/ml

Instrument :
 ECD_R
ClientSampleId :
 PB120943BSD



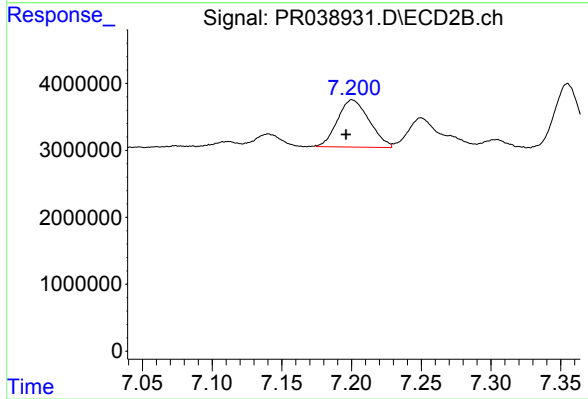
#27 AR-1254-2

R.T.: 6.829 min
 Delta R.T.: -0.002 min
 Response: 5620485
 Conc: 17.19 ng/ml



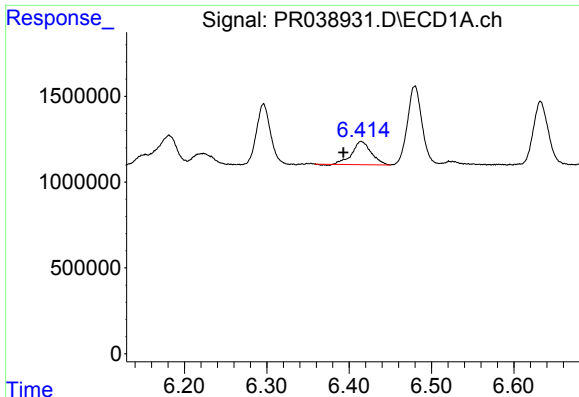
#28 AR-1254-3

R.T.: 6.181 min
 Delta R.T.: 0.014 min
 Response: 3306817
 Conc: 22.37 ng/ml



#28 AR-1254-3

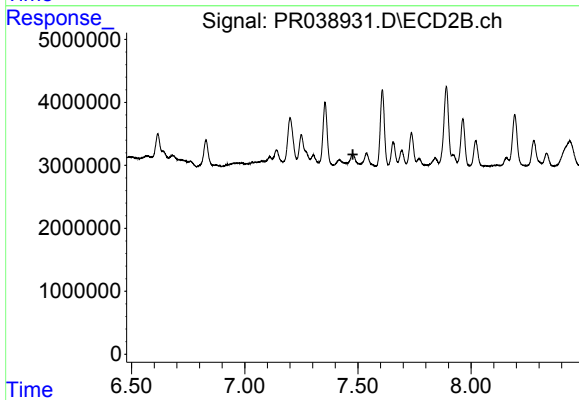
R.T.: 7.201 min
 Delta R.T.: 0.004 min
 Response: 11202176
 Conc: 29.32 ng/ml



#29 AR-1254-4

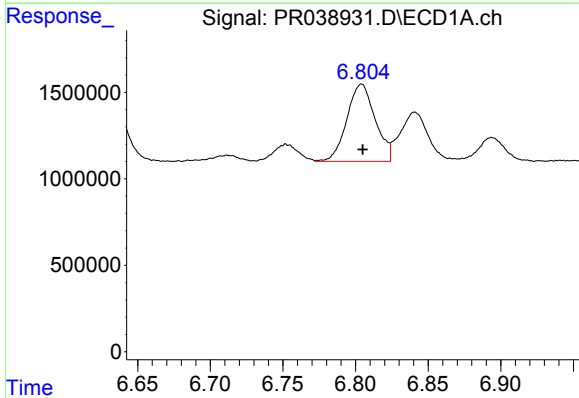
R.T.: 6.415 min
 Delta R.T.: 0.022 min
 Response: 2177662
 Conc: 19.12 ng/ml

Instrument :
 ECD_R
 ClientSampleId :
 PB120943BSD



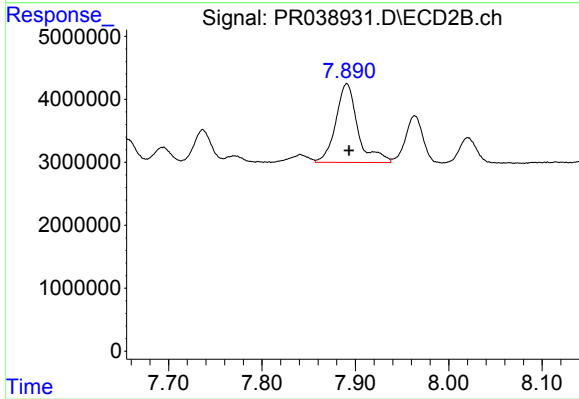
#29 AR-1254-4

R.T.: 0.000 min
 Exp R.T. : 7.478 min
 Response: 0
 Conc: N.D.



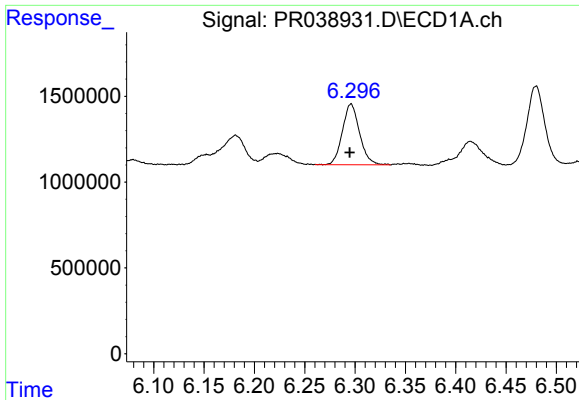
#30 AR-1254-5

R.T.: 6.804 min
 Delta R.T.: 0.000 min
 Response: 6080968
 Conc: 43.52 ng/ml



#30 AR-1254-5

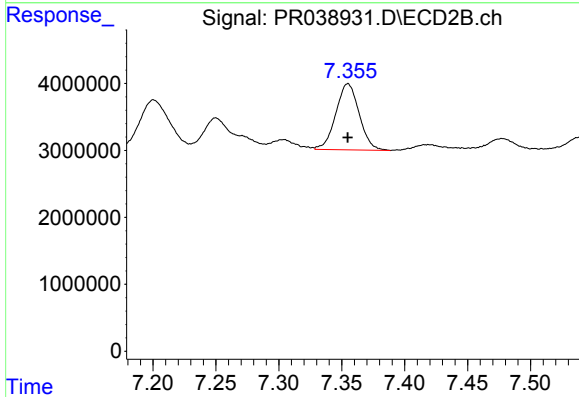
R.T.: 7.891 min
 Delta R.T.: -0.002 min
 Response: 20493645
 Conc: 62.88 ng/ml



#31 AR-1260-1

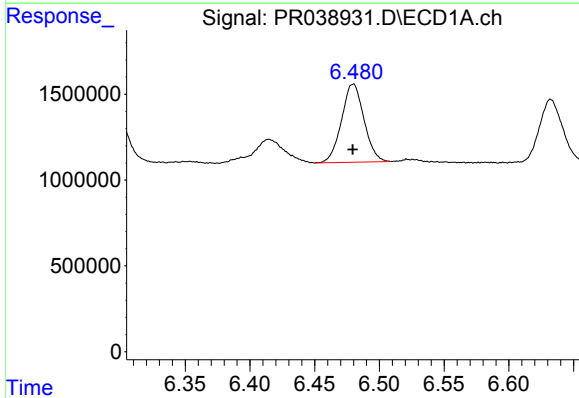
R.T.: 6.296 min
 Delta R.T.: 0.001 min
 Response: 4216313
 Conc: 43.42 ng/ml

Instrument :
 ECD_R
 ClientSampleId :
 PB120943BSD



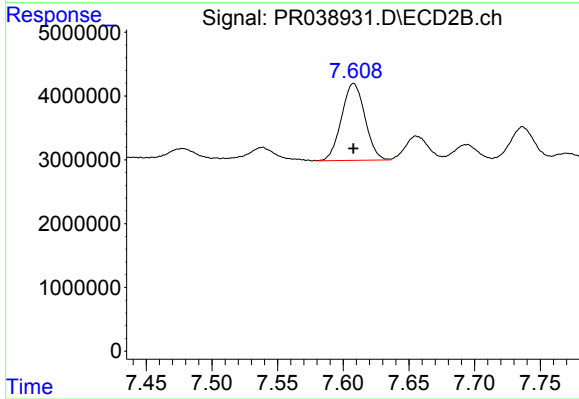
#31 AR-1260-1

R.T.: 7.355 min
 Delta R.T.: 0.000 min
 Response: 12818108
 Conc: 47.10 ng/ml



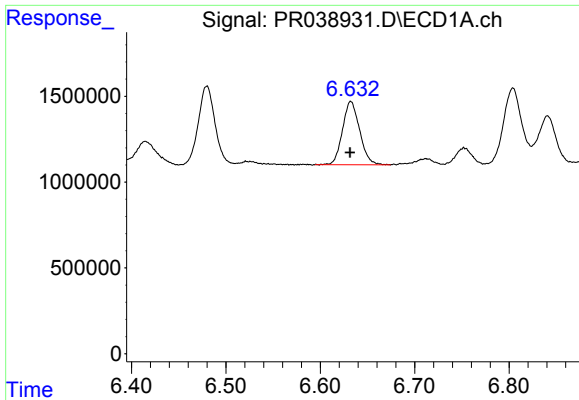
#32 AR-1260-2

R.T.: 6.480 min
 Delta R.T.: 0.000 min
 Response: 5504226
 Conc: 43.71 ng/ml



#32 AR-1260-2

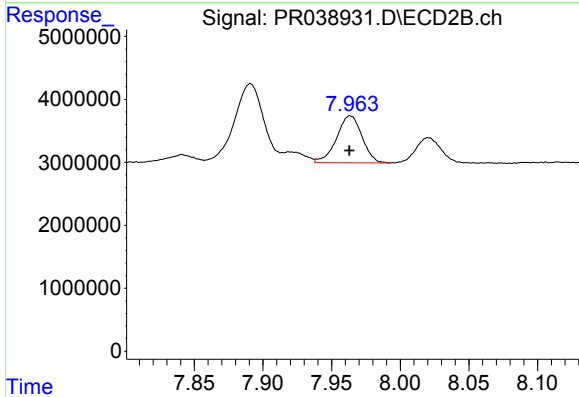
R.T.: 7.608 min
 Delta R.T.: 0.000 min
 Response: 15004761
 Conc: 44.04 ng/ml



#33 AR-1260-3

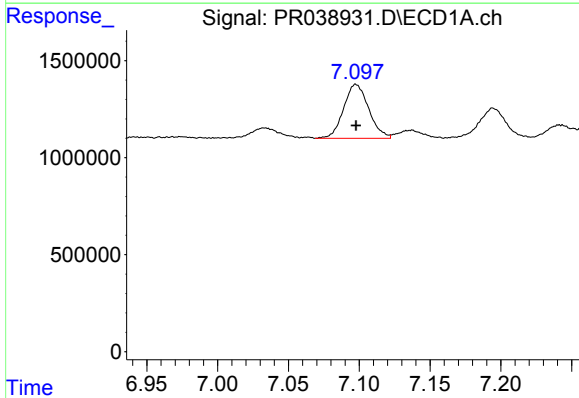
R.T.: 6.632 min
 Delta R.T.: 0.000 min
 Response: 4660126
 Conc: 41.02 ng/ml

Instrument :
 ECD_R
ClientSampleId :
 PB120943BSD



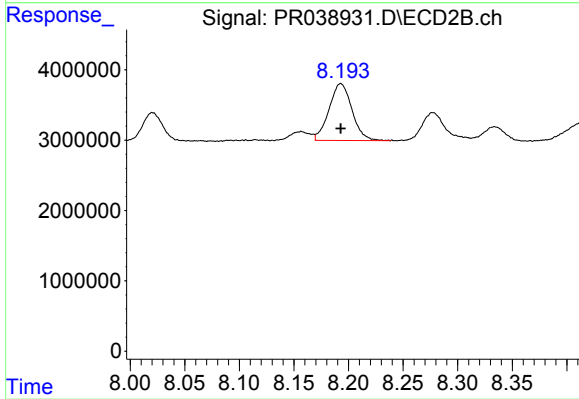
#33 AR-1260-3

R.T.: 7.964 min
 Delta R.T.: 0.000 min
 Response: 9652154
 Conc: 35.56 ng/ml



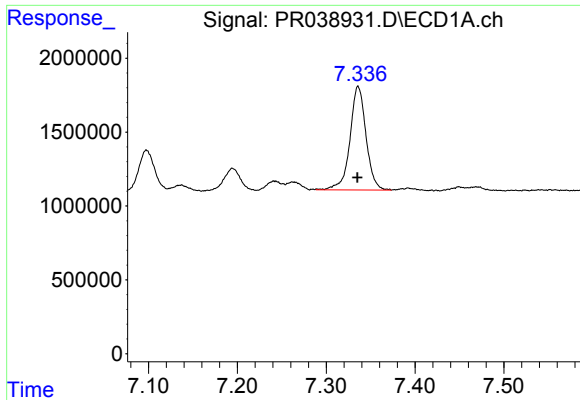
#34 AR-1260-4

R.T.: 7.098 min
 Delta R.T.: 0.000 min
 Response: 3434008
 Conc: 33.62 ng/ml



#34 AR-1260-4

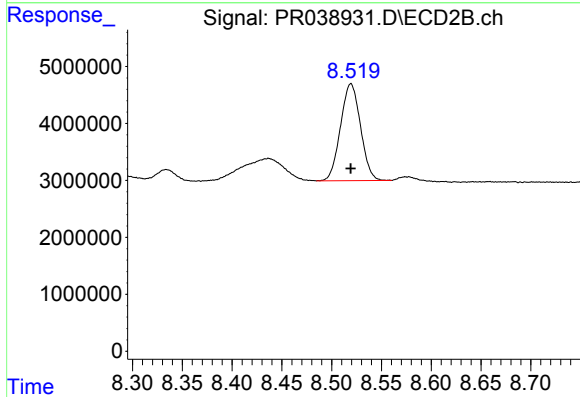
R.T.: 8.193 min
 Delta R.T.: 0.000 min
 Response: 11843254
 Conc: 36.55 ng/ml



#35 AR-1260-5

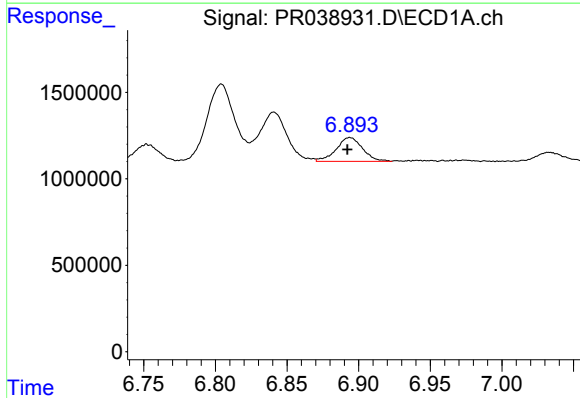
R.T.: 7.336 min
 Delta R.T.: 0.000 min
 Response: 8824689
 Conc: 33.48 ng/ml

Instrument :
 ECD_R
 ClientSampleId :
 PB120943BSD



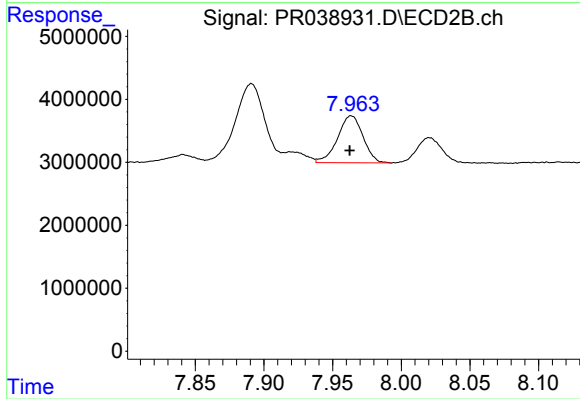
#35 AR-1260-5

R.T.: 8.519 min
 Delta R.T.: 0.000 min
 Response: 23798205
 Conc: 33.96 ng/ml



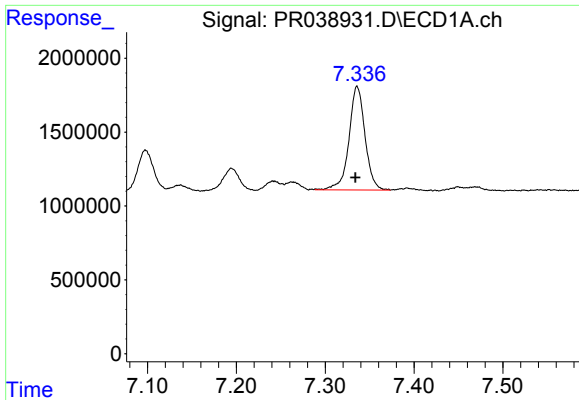
#36 AR-1262-1

R.T.: 6.894 min
 Delta R.T.: 0.002 min
 Response: 1772399
 Conc: 25.45 ng/ml



#36 AR-1262-1

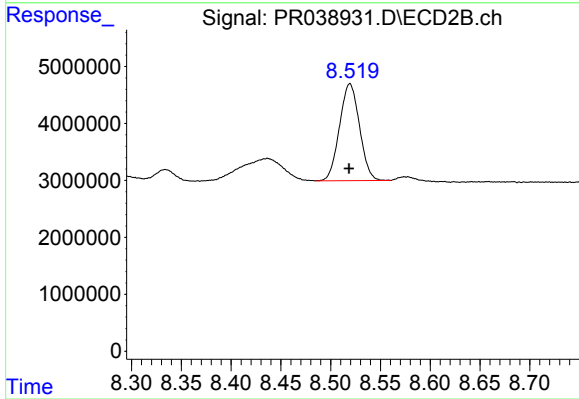
R.T.: 7.964 min
 Delta R.T.: 0.001 min
 Response: 9652154
 Conc: 20.29 ng/ml



#37 AR-1262-2

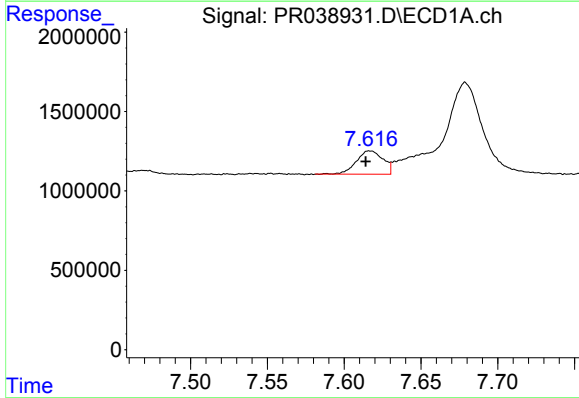
R.T.: 7.336 min
 Delta R.T.: 0.002 min
 Response: 8824689
 Conc: 24.85 ng/ml

Instrument :
 ECD_R
 ClientSampleId :
 PB120943BSD



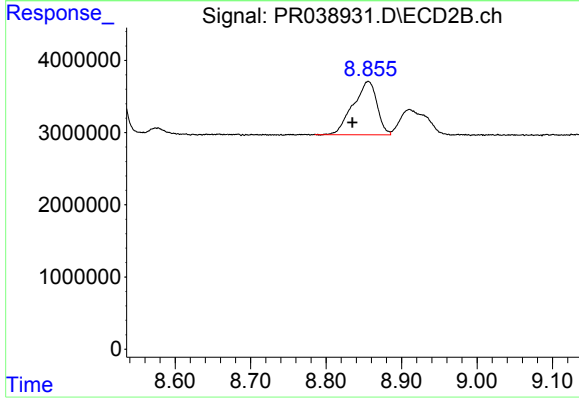
#37 AR-1262-2

R.T.: 8.519 min
 Delta R.T.: 0.000 min
 Response: 23798205
 Conc: 24.79 ng/ml



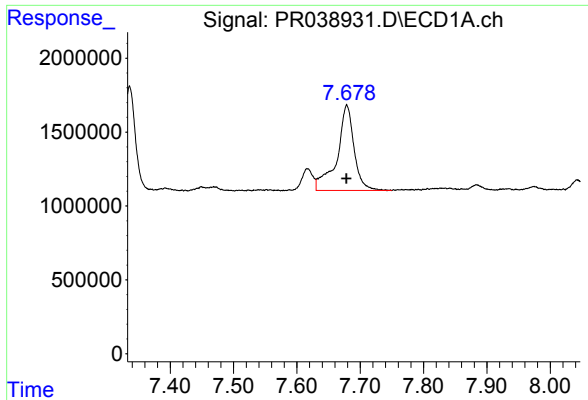
#38 AR-1262-3

R.T.: 7.617 min
 Delta R.T.: 0.003 min
 Response: 1773465
 Conc: 13.18 ng/ml



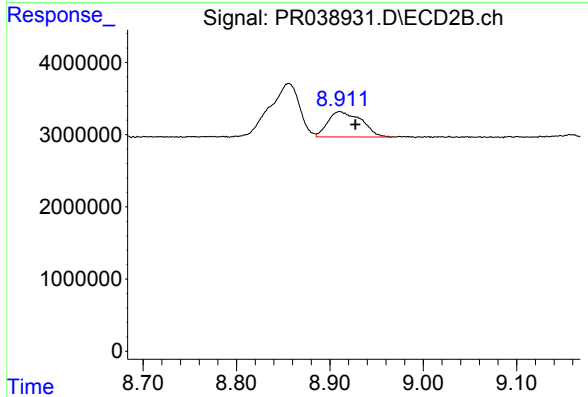
#38 AR-1262-3

R.T.: 8.856 min
 Delta R.T.: 0.021 min
 Response: 16336179
 Conc: 25.58 ng/ml

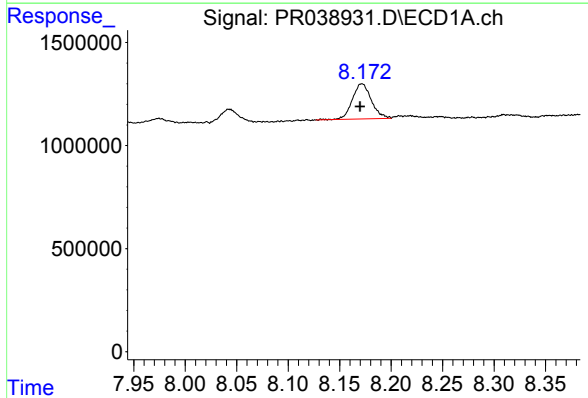


#39 AR-1262-4
 R.T.: 7.679 min
 Delta R.T.: 0.000 min
 Response: 10854651
 Conc: 41.49 ng/ml

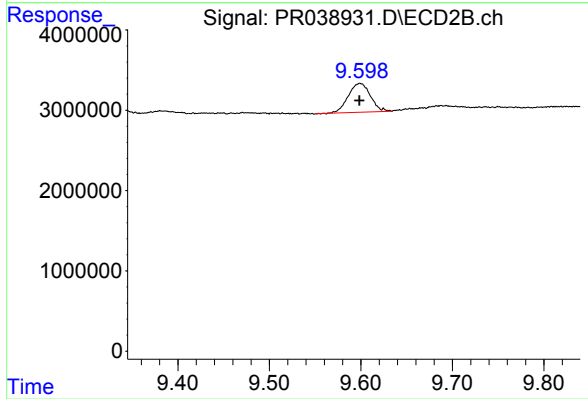
Instrument :
 ECD_R
 ClientSampleId :
 PB120943BSD



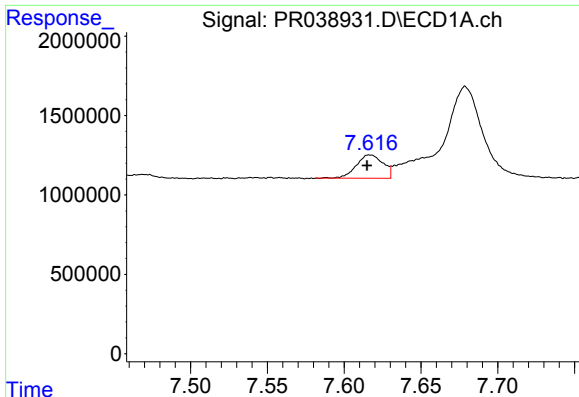
#39 AR-1262-4
 R.T.: 8.911 min
 Delta R.T.: -0.017 min
 Response: 8794130
 Conc: 18.21 ng/ml



#40 AR-1262-5
 R.T.: 8.172 min
 Delta R.T.: 0.002 min
 Response: 2173638
 Conc: 17.20 ng/ml



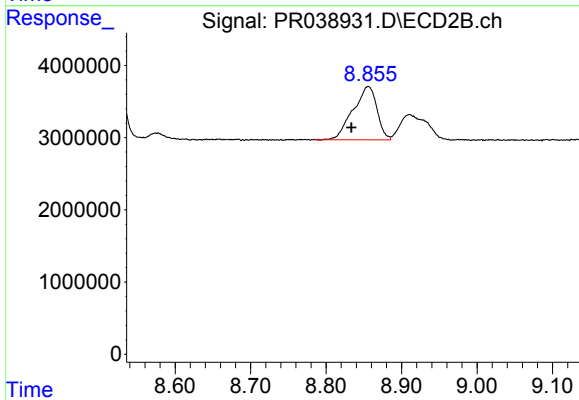
#40 AR-1262-5
 R.T.: 9.599 min
 Delta R.T.: 0.000 min
 Response: 6041761
 Conc: 16.80 ng/ml



#41 AR-1268-1

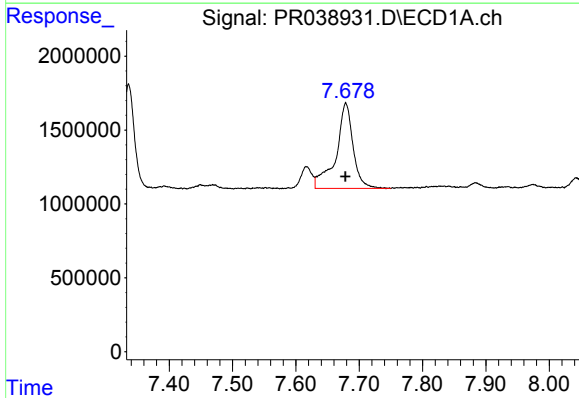
R.T.: 7.617 min
 Delta R.T.: 0.002 min
 Response: 1773465
 Conc: 4.93 ng/ml

Instrument :
 ECD_R
 ClientSampleId :
 PB120943BSD



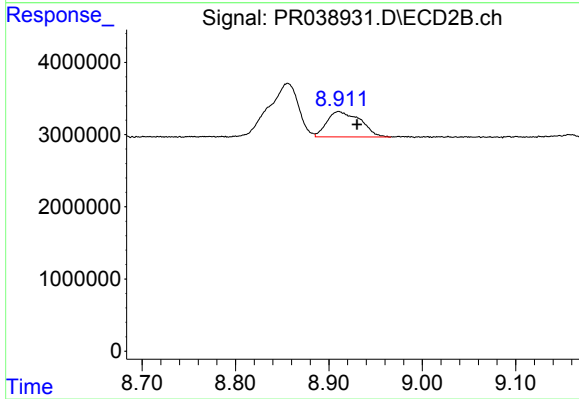
#41 AR-1268-1

R.T.: 8.856 min
 Delta R.T.: 0.022 min
 Response: 16336179
 Conc: 16.33 ng/ml



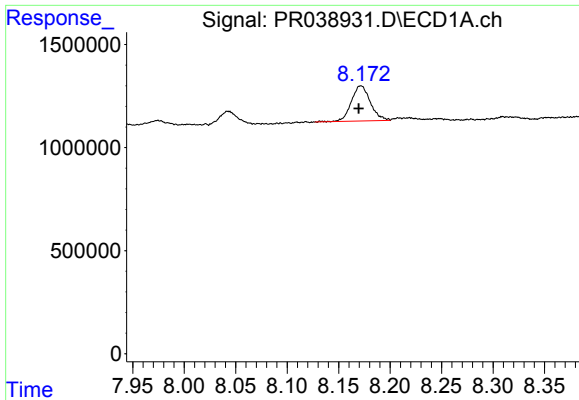
#42 AR-1268-2

R.T.: 7.679 min
 Delta R.T.: 0.000 min
 Response: 10854651
 Conc: 32.46 ng/ml



#42 AR-1268-2

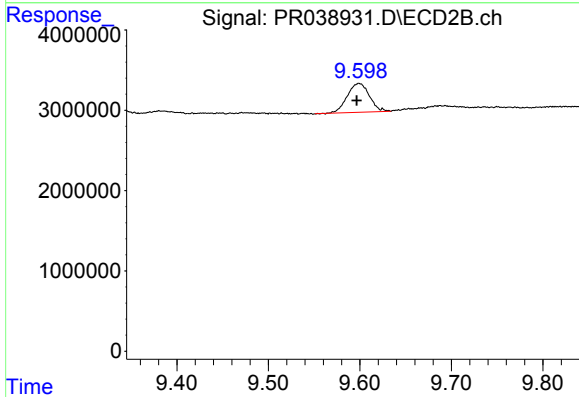
R.T.: 8.911 min
 Delta R.T.: -0.020 min
 Response: 8794130
 Conc: 9.33 ng/ml



#44 AR-1268-4

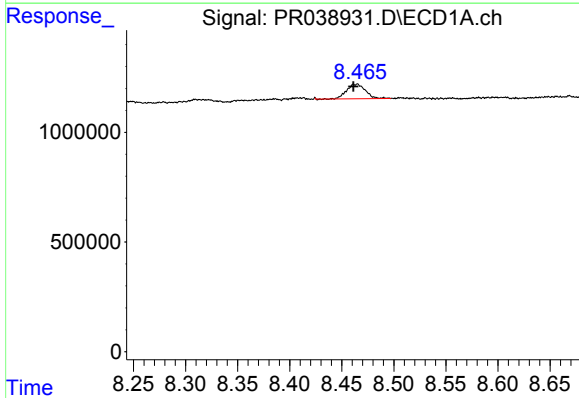
R.T.: 8.172 min
 Delta R.T.: 0.002 min
 Response: 2173638
 Conc: 17.36 ng/ml

Instrument :
 ECD_R
ClientSampleId :
 PB120943BSD



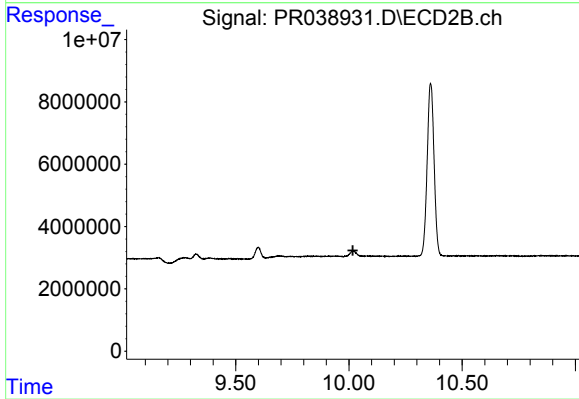
#44 AR-1268-4

R.T.: 9.599 min
 Delta R.T.: 0.003 min
 Response: 6041761
 Conc: 16.89 ng/ml



#45 AR-1268-5

R.T.: 8.464 min
 Delta R.T.: 0.003 min
 Response: 838476
 Conc: 0.84 ng/ml



#45 AR-1268-5

R.T.: 0.000 min
 Exp R.T. : 10.018 min
 Response: 0
 Conc: N.D.